

Houston Pilots Forecast Package



Updated: 6:00 AM CT

Wednesday, October 12, 2022

Forecaster: Will Danby

Weather Headlines

- Monitoring the potential for scattered showers and thunderstorms today and possibly Friday.
- No direct tropical activity is favored in SE TX over the next 7-10 days.
- Some elevated gusty winds of 20+ MPH possible for Wednesday. More details on wind forecasts for each day below.

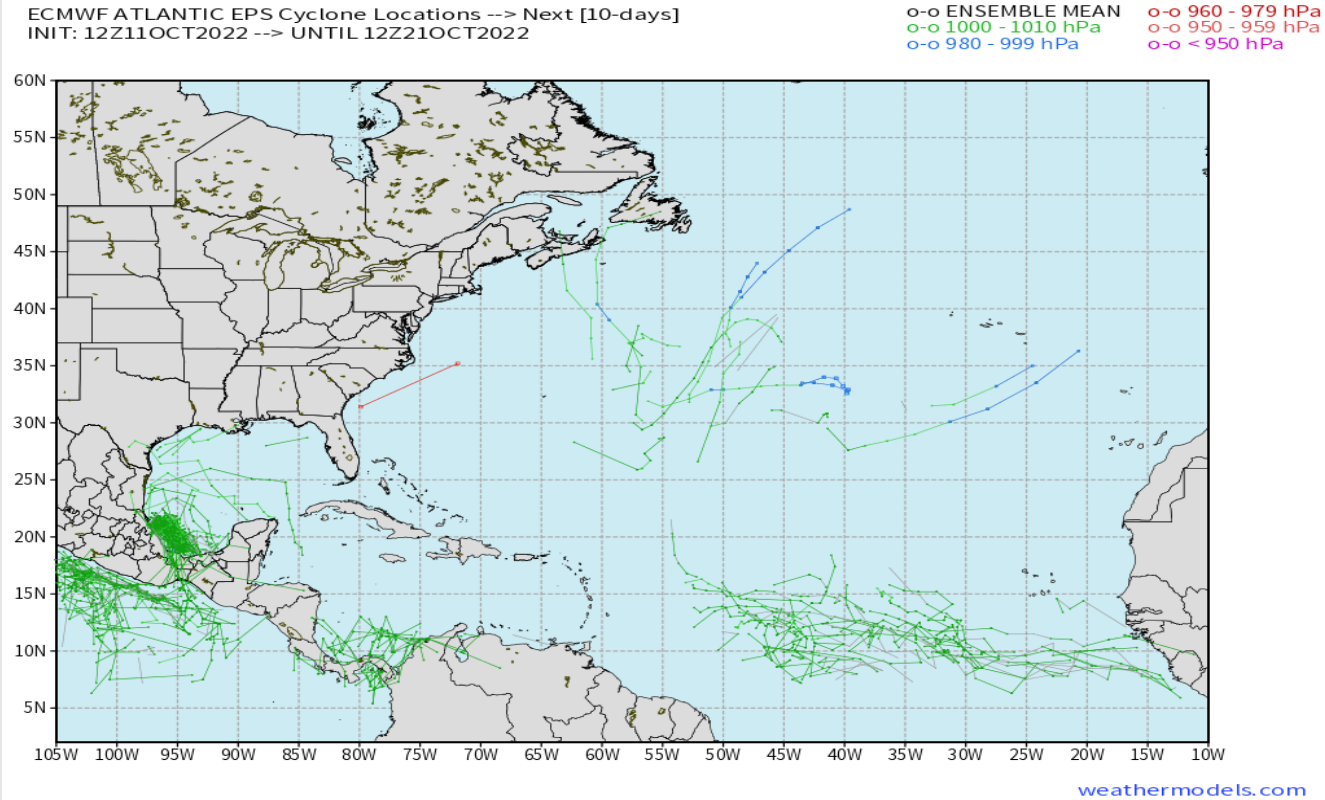


Radar/ NWS Alerts: 6:00 AM CT



As always, please do not hesitate to reach out to us with any forecast questions via the chat option on the Weather Porthole or our on-call number, **(317)-560-8122** press 1 for forecast questions.

European Data Tracks Next 10 Days



There are no tropical threats anticipated for SE TX over the next 7-10 days. Will continue to monitor S Gulf of Mexico.

Confidence



Above Normal Below Normal

Houston Pilots: Wed. 10/12/2022



Forecast Discussion

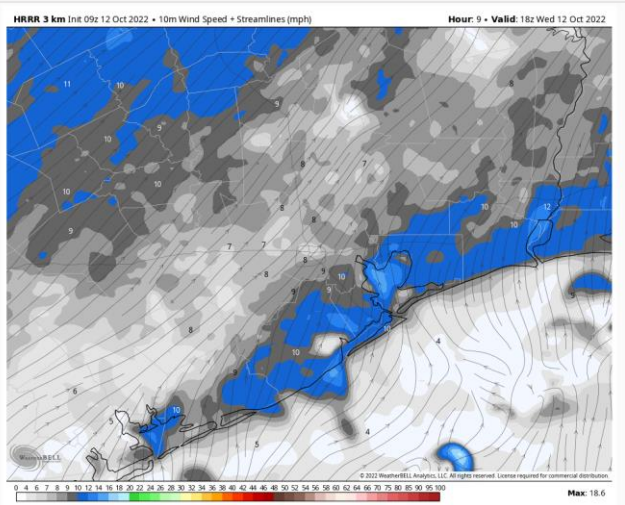
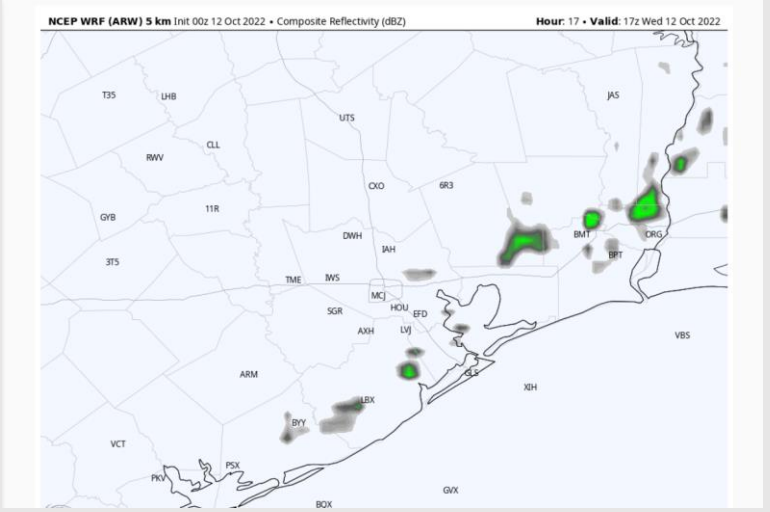
Precip: Favoring a 20% for scattered showers and thunderstorms from 11 AM - 7 PM. This is anticipated to be hit or miss rather than a washout. After 7 PM chances decrease to 10%. Anticipating dry conditions after midnight.

Wind: Winds at all stations will be 5-10 MPH out of the SE. Winds become more southerly around 8am, maintaining 5-10 MPH. Around 3 PM, winds increase to 12-17 MPH South of Morgan's Point for the rest of the day. Wind gusts of 20-22 MPH are possible, mainly from Morgan's Point extending to the north and west inland.

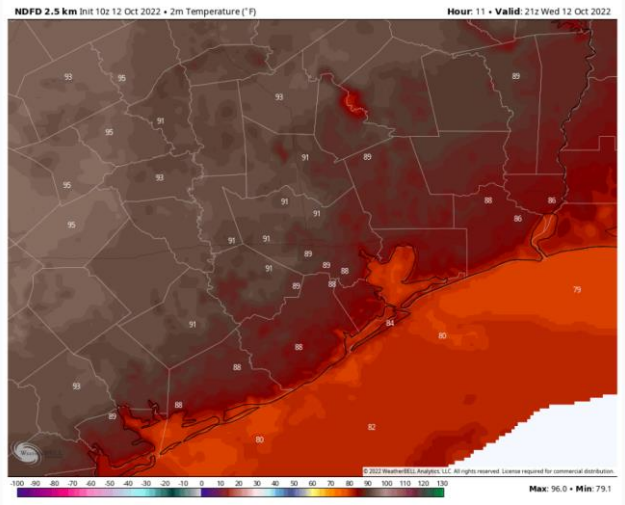
Temps: High temps Wednesday in the lower 80s F for the boarding station and in the upper 80s F at all other stations.

Visibility: Not favoring any fog conditions this morning.

Precip Forecast: 12 PM CT



Wind Speed
3 PM CT



High Temps
Today

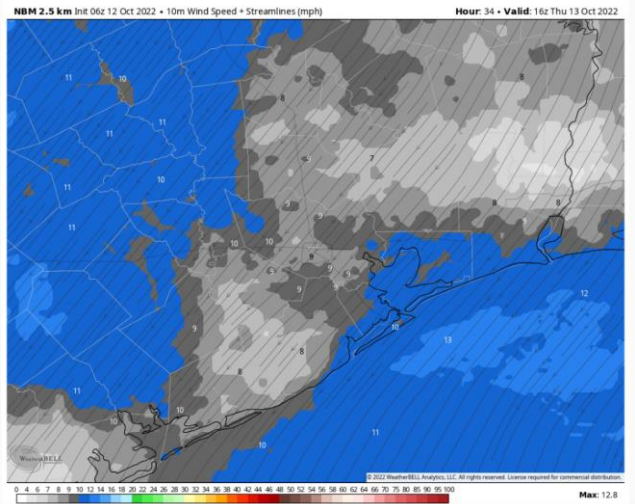
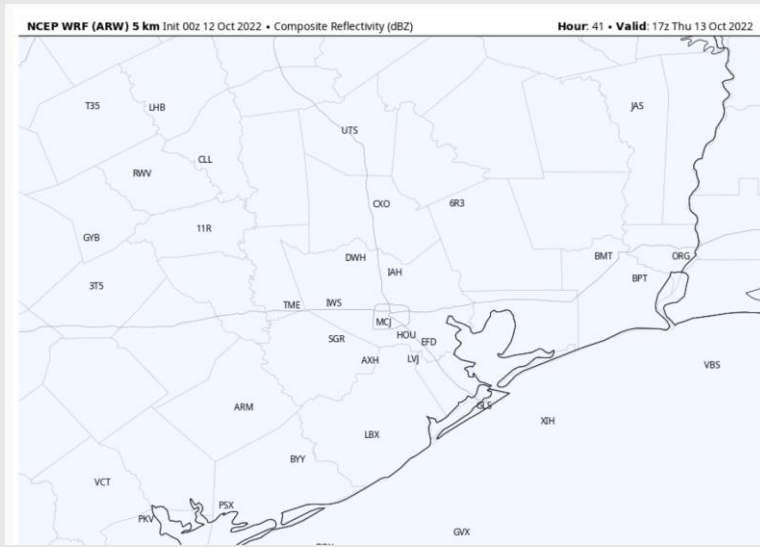
Houston Pilots: Thurs. 10/13/2022



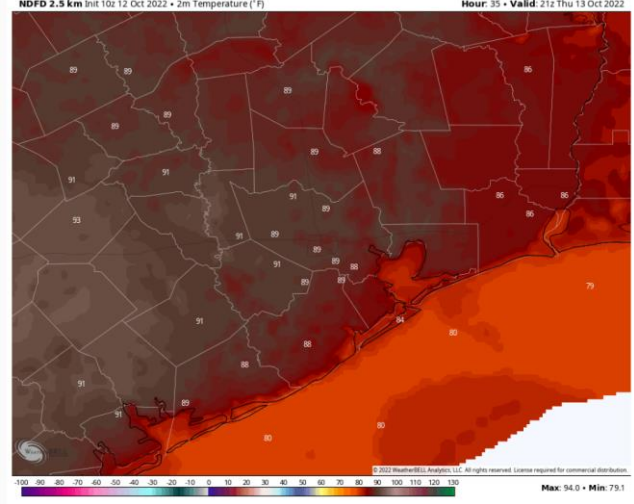
Forecast Discussion

- Precip:** Anticipating dry conditions Thursday.
- Wind:** Sustained winds will be out of the SW at 10-15 MPH in the early morning before shifting from the NE by 4 AM. After the shift, winds increase to 12-17 MPH from 10 AM – 4 PM across all stations. Around 5 PM winds begin to subside to 6-10 MPH for the bay area but remain slightly elevated for the boarding station at 8-13 MPH for the remainder of the night.
- Temps:** High temps Monday in the low 80s F near the boarding station and near 90 F for all stations Monday.
- Visibility:** Not anticipating visibility concerns at this time for most stations. Will continue to monitor the potential for fog near the 610 bridge for Thursday morning.

Precip Forecast: 12 PM CT



Wind Speed
11 AM CT



High Temps
Thursday

Houston Pilots: Fri. 10/14/2022



Forecast Discussion

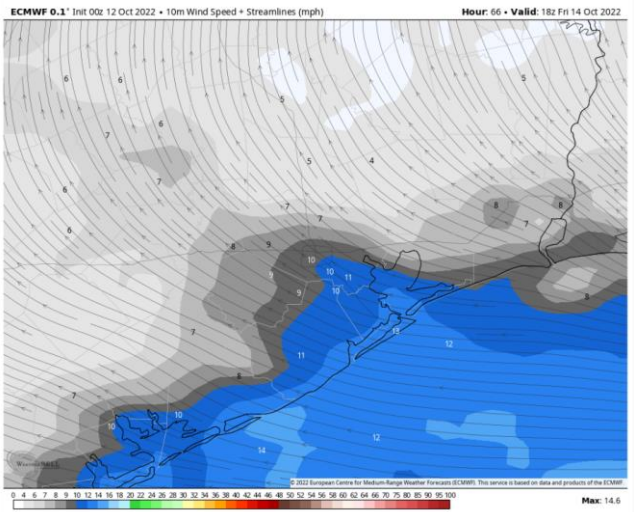
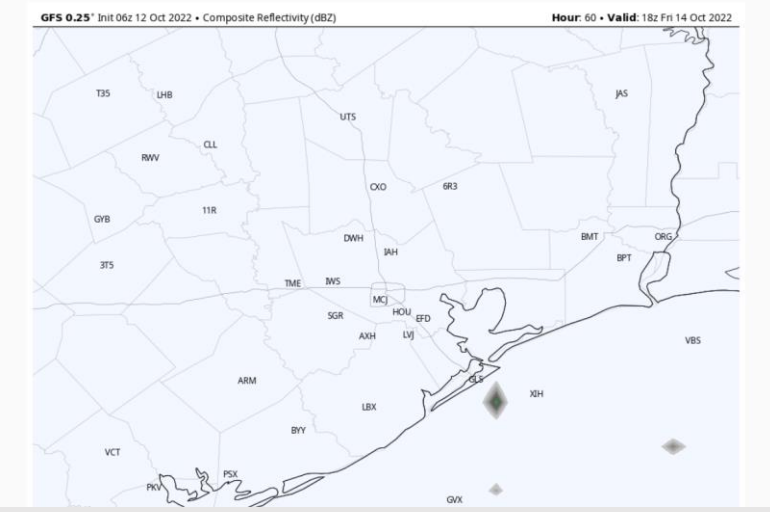
Precip: A 10% chance of isolated showers/storms throughout the day on Friday. Chances will start around 7 AM and last until 7 PM. Anticipating dry conditions after 7 PM.

Wind: Winds out of the ESE will start off at 5-10 MPH across all stations. In the late morning around 10 AM, winds will increase from the SE to 8-13 MPH for all stations in the bay area and 10-15 MPH at the boarding station and remained sustained for the rest of the day out of the SE. After 7 PM, winds north of Morgan's point will return to 5-10 MPH while stations south will continue to have winds at 10-15 MPH.

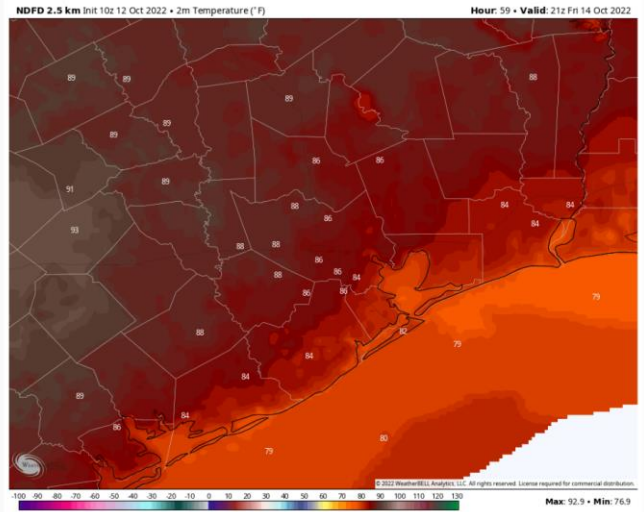
Temps: High temps Friday near 80 F for the boarding station and in the mid 80s F at all other stations.

Visibility: Not anticipating visibility concerns at this time.

Precip Forecast: 5 PM CT

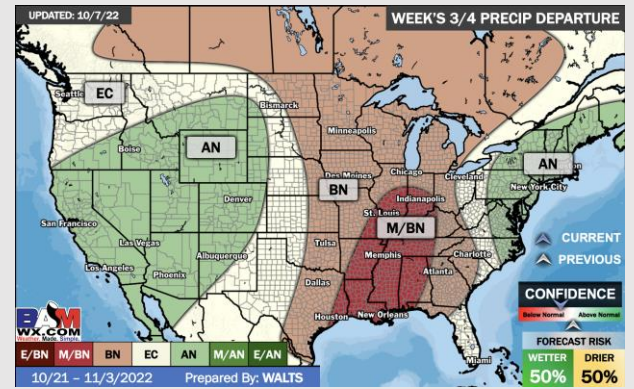
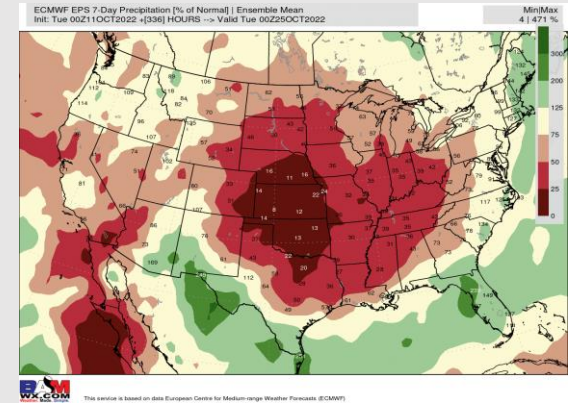
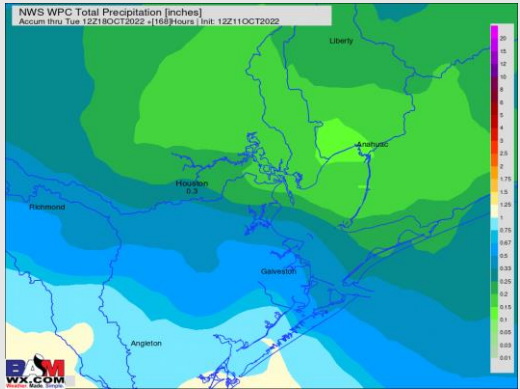
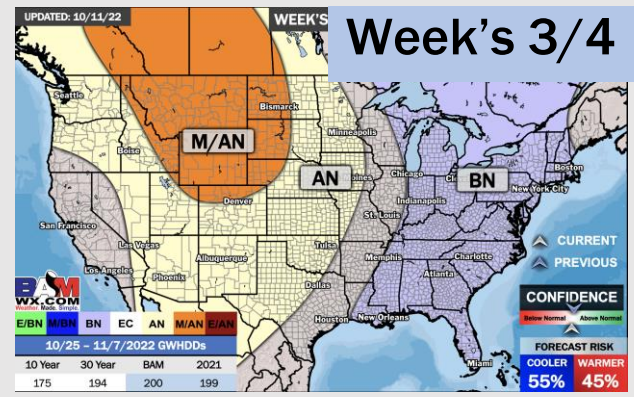
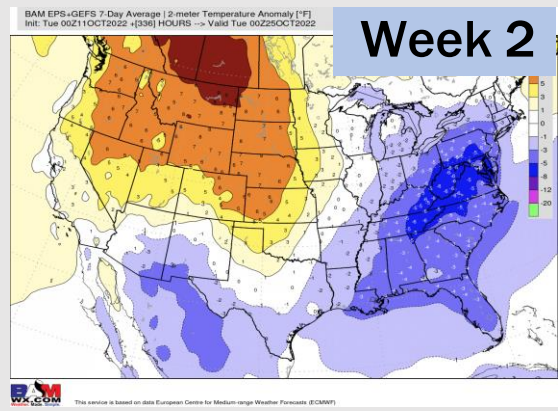
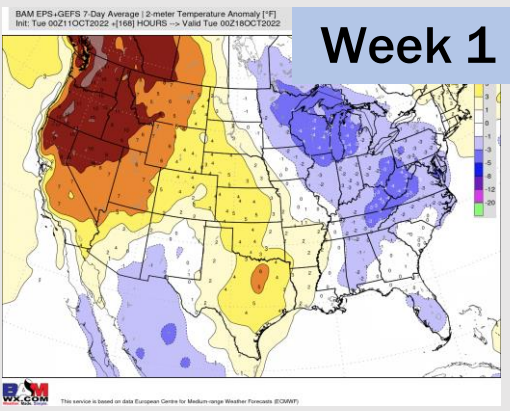


Wind Speed
3 PM CT



High Temps
Friday

Houston Pilots: 10/12/2022



- Temperatures expected to be above normal for the next week. Expecting the next several days to be drier (excluding Wed.) with chances for rain Mon.-Tues. next week.
- Week 2 likely feature periods of slightly below normal temperatures and below normal precipitation.
- The weeks ¾ timeframe into late October looks to feature normal temperatures and below normal risks for precip.