

Houston Pilots Forecast Package



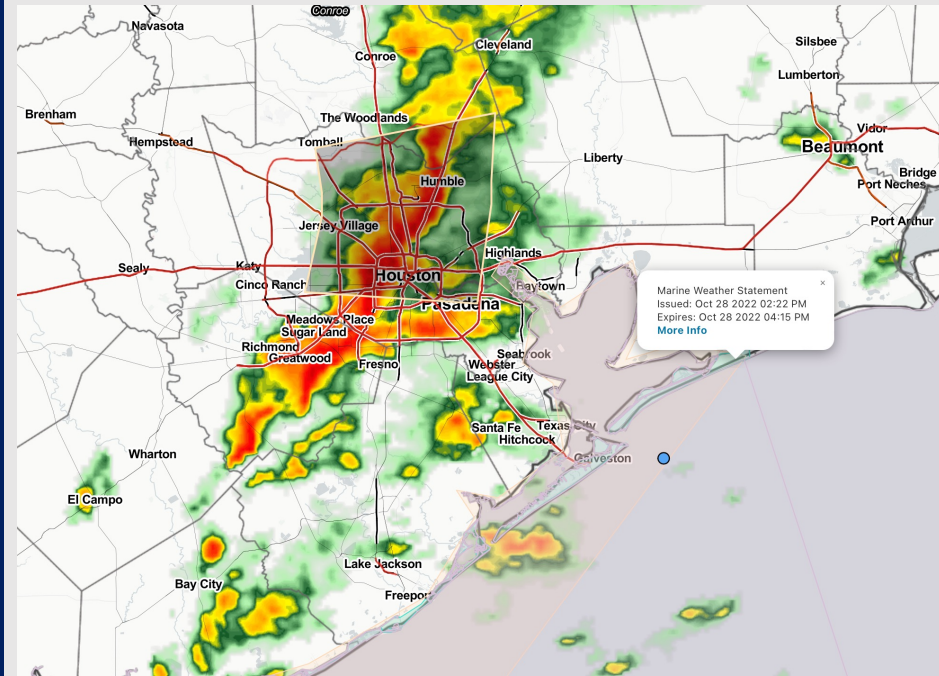
Updated: 2:25 PM CT

Friday, October 28, 2022

Forecaster: Alyssa McClung

Weather Headlines

- Anticipating line of storms in the image to the right to continue through 4PM producing lightning and local downpours.
- No direct tropical activity is favored in SE TX over the next 7-10 days.
- Some gusts of 30+ knots possible with storms moving through this evening. More details on wind forecasts for each day below.
- Storms tonight may cause reduced visibility. Not anticipating fog concerns.



Radar/ NWS Alerts: 2:25 PM CT

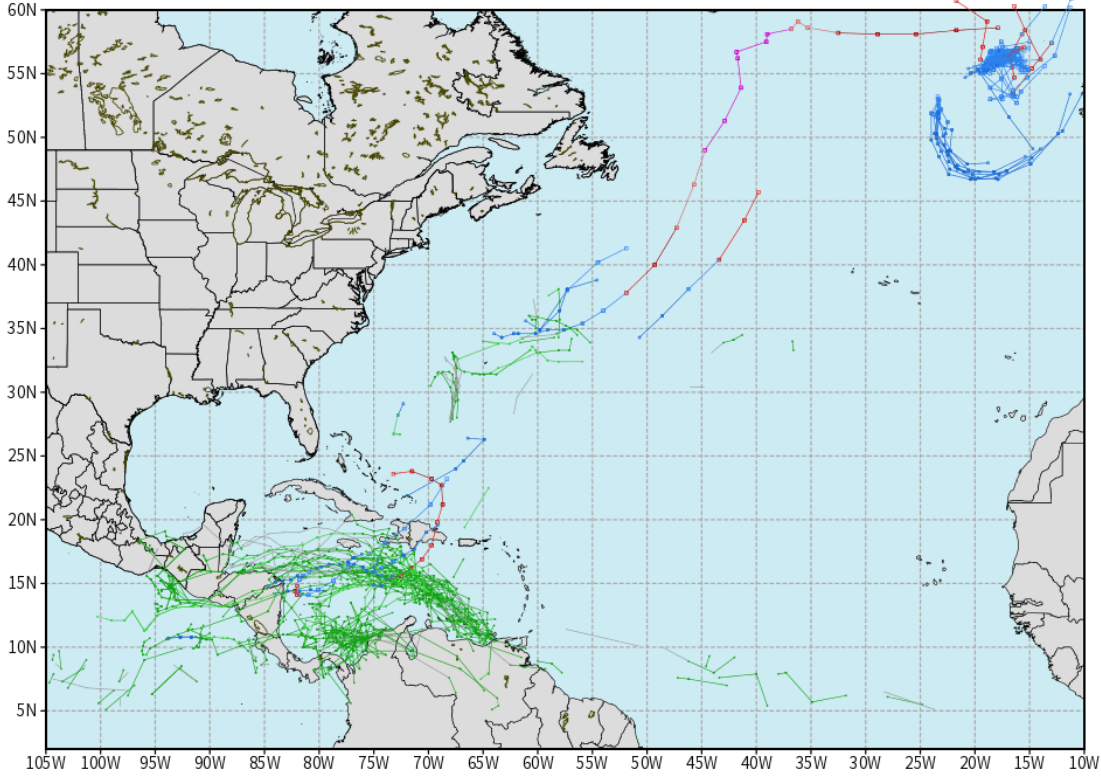


As always, please do not hesitate to reach out to us with any forecast questions via the chat option on the Weather Porthole or our on-call number, **(317)-560-8122** press 1 for forecast questions.

European Data Tracks Next 10 Days

ECMWF ATLANTIC EPS Cyclone Locations --> Next [10-days]
INIT: 00Z28OCT2022 --> UNTIL 00Z07NOV2022

o-o ENSEMBLE MEAN o-o 960 - 979 hPa
o-o 1000 - 1010 hPa o-o 950 - 959 hPa
o-o 980 - 999 hPa o-o < 950 hPa



weathermodels.com

There are no tropical threats anticipated for SE TX over the next 7-10 days.

Confidence

Above Normal Below Normal

Houston Pilots Visibility Report



Time	10-28-2022 Fri 12pm	10-28-2022 Fri 1pm	10-28-2022 Fri 2pm	10-28-2022 Fri 3pm	10-28-2022 Fri 4pm	10-28-2022 Fri 5pm	10-28-2022 Fri 6pm	10-28-2022 Fri 7pm	10-28-2022 Fri 8pm	10-28-2022 Fri 9pm	10-28-2022 Fri 10pm	10-28-2022 Fri 11pm	10-29-2022 Sat 12am	10-29-2022 Sat 1am	10-29-2022 Sat 2am	10-29-2022 Sat 3am	10-29-2022 Sat 4am	10-29-2022 Sat 5am	10-29-2022 Sat 6am	10-29-2022 Sat 7am	10-29-2022 Sat 8am	10-29-2022 Sat 9am	10-29-2022 Sat 10am	10-29-2022 Sat 11am	10-29-2022 Sat 12pm	10-29-2022 Sat 1pm	10-29-2022 Sat 2pm	10-29-2022 Sat 3pm	10-29-2022 Sat 4pm	10-29-2022 Sat 5pm	10-29-2022 Sat 6pm	10-29-2022 Sat 7pm	10-29-2022 Sat 8pm	10-29-2022 Sat 9pm	10-29-2022 Sat 10pm	10-29-2022 Sat 11pm	
Houston Pilots N - 610 Bridge	5.525	3.908	3.908	2.477	3.908	4.942	5.935	6.976	7.885	10.000	10.000	10.000	10.000	10.000	10.000	10.000	10.000	10.000	10.000	10.000	10.000	10.000	10.000	10.000	10.000	10.000	10.000	10.000	10.000	10.000	10.000	10.000	10.000	10.000	10.000	10.000	10.000
Houston Pilots M - Kinder 1	5.525	3.908	3.908	2.477	3.908	4.942	5.935	6.976	7.885	10.000	10.000	10.000	10.000	10.000	10.000	10.000	10.000	10.000	10.000	10.000	10.000	10.000	10.000	10.000	10.000	10.000	10.000	10.000	10.000	10.000	10.000	10.000	10.000	10.000	10.000	10.000	10.000
Houston Pilots L - Greens Bayou	4.975	3.908	3.908	2.477	3.908	4.942	5.387	6.963	7.885	9.440	10.000	10.000	10.000	10.000	10.000	10.000	10.000	10.000	10.000	10.000	10.000	10.000	10.000	10.000	10.000	10.000	10.000	10.000	10.000	10.000	10.000	10.000	10.000	10.000	10.000	10.000	10.000
Houston Pilots K - Shell Crude	4.975	3.908	3.908	2.477	3.908	4.942	5.387	6.959	7.885	8.325	10.000	10.000	10.000	10.000	10.000	10.000	10.000	10.000	10.000	10.000	10.000	10.000	10.000	10.000	10.000	10.000	10.000	10.000	10.000	10.000	10.000	10.000	10.000	10.000	10.000	10.000	10.000
Houston Pilots J - Lynchburg Ferries	4.942	3.908	3.908	2.477	3.908	4.361	4.942	6.931	7.885	7.885	10.000	10.000	10.000	10.000	10.000	10.000	10.000	10.000	10.000	10.000	10.000	10.000	10.000	10.000	10.000	10.000	10.000	10.000	10.000	10.000	10.000	10.000	10.000	10.000	10.000	10.000	10.000
Houston Pilots I - Exxon 3	4.942	3.908	3.908	2.897	3.908	4.084	4.942	6.931	7.885	7.885	10.000	10.000	10.000	10.000	10.000	10.000	10.000	10.000	10.000	10.000	10.000	10.000	10.000	10.000	10.000	10.000	10.000	10.000	10.000	10.000	10.000	10.000	10.000	10.000	10.000	10.000	10.000
Houston Pilots H - Morgans Point	4.942	3.908	3.908	2.954	3.908	4.084	4.942	6.931	7.720	7.885	10.000	10.000	10.000	10.000	10.000	10.000	10.000	10.000	10.000	10.000	10.000	10.000	10.000	10.000	10.000	10.000	10.000	10.000	10.000	10.000	10.000	10.000	10.000	10.000	10.000	10.000	10.000
Houston Pilots G - 75/76	4.942	4.810	3.908	2.954	3.908	3.908	5.459	6.931	7.885	8.999	10.000	10.000	10.000	10.000	10.000	10.000	10.000	10.000	10.000	10.000	10.000	10.000	10.000	10.000	10.000	10.000	10.000	10.000	10.000	10.000	10.000	10.000	10.000	10.000	10.000	10.000	10.000
Houston Pilots F - 63/64	4.942	4.942	3.908	2.954	3.908	3.908	5.897	7.885	8.534	9.648	10.000	10.000	10.000	10.000	10.000	10.000	10.000	10.000	10.000	10.000	10.000	10.000	10.000	10.000	10.000	10.000	10.000	10.000	10.000	10.000	10.000	10.000	10.000	10.000	10.000	10.000	10.000
Houston Pilots E - 51/52	4.942	4.942	3.908	3.367	3.908	3.908	5.897	8.999	8.999	10.000	10.000	10.000	10.000	10.000	10.000	10.000	10.000	10.000	10.000	10.000	10.000	10.000	10.000	10.000	10.000	10.000	10.000	10.000	10.000	10.000	10.000	10.000	10.000	10.000	10.000	10.000	10.000
Houston Pilots D - 37/38	5.897	4.942	4.942	4.299	2.690	4.811	5.897	8.999	8.999	10.000	9.873	10.000	10.000	10.000	10.000	10.000	10.000	10.000	10.000	10.000	10.000	10.000	10.000	10.000	10.000	10.000	10.000	10.000	10.000	10.000	10.000	10.000	10.000	10.000	10.000	10.000	10.000
Houston Pilots C - 25/26	6.931	4.942	4.942	4.942	2.954	4.942	5.944	8.999	8.999	10.000	6.954	10.000	10.000	10.000	10.000	10.000	10.000	10.000	10.000	10.000	10.000	10.000	10.000	10.000	10.000	10.000	10.000	10.000	10.000	10.000	10.000	10.000	10.000	10.000	10.000	10.000	10.000
Houston Pilots B - 11/12	6.931	4.942	4.942	4.942	2.954	4.942	5.944	8.999	8.999	10.000	6.954	10.000	10.000	10.000	10.000	10.000	10.000	10.000	10.000	10.000	10.000	10.000	10.000	10.000	10.000	10.000	10.000	10.000	10.000	10.000	10.000	10.000	10.000	10.000	10.000	10.000	10.000
Houston Pilots A - 1 & 2 Bravo	6.931	4.942	5.897	4.942	3.908	4.942	5.897	6.931	6.931	6.931	7.885	10.000	10.000	10.000	10.000	10.000	10.000	10.000	9.822	10.000	10.000	10.000	10.000	10.000	9.822	10.000	10.000	10.000	10.000	10.000	10.000	10.000	10.000	10.000	9.822	9.822	9.822

Houston Pilots Wind Report



Example

Sustained wind 13 Knots
Gusts 18 Knots
Wind from the N

WS: 13
G:18
N

Time Knots	10-28-2022 Fri 12pm	10-28-2022 Fri 1pm	10-28-2022 Fri 2pm	10-28-2022 Fri 3pm	10-28-2022 Fri 4pm	10-28-2022 Fri 5pm	10-28-2022 Fri 6pm	10-28-2022 Fri 7pm	10-28-2022 Fri 8pm	10-28-2022 Fri 9pm	10-28-2022 Fri 10pm	10-28-2022 Fri 11pm	10-29-2022 Sat 12am	10-29-2022 Sat 1am	10-29-2022 Sat 2am	10-29-2022 Sat 3am	10-29-2022 Sat 4am	10-29-2022 Sat 5am	10-29-2022 Sat 6am	10-29-2022 Sat 7am	10-29-2022 Sat 8am	10-29-2022 Sat 9am	10-29-2022 Sat 10am	10-29-2022 Sat 11am	10-29-2022 Sat 12pm	10-29-2022 Sat 1pm	10-29-2022 Sat 2pm	10-29-2022 Sat 3pm	10-29-2022 Sat 4pm	10-29-2022 Sat 5pm	10-29-2022 Sat 6pm	10-29-2022 Sat 7pm	10-29-2022 Sat 8pm	10-29-2022 Sat 9pm	10-29-2022 Sat 10pm	10-29-2022 Sat 11pm	
Houston Pilots N - 610 Bridge	WS: 11 G:21 ESE	WS: 10 G:24 ESE	WS: 10 G:24 ESE	WS: 11 G:23 ESE	WS: 10 G:25 E	WS: 8 G:24 ESE	WS: 8 G:27 ESE	WS: 10 G:27 SE	WS: 10 G:29 ESE	WS: 13 G:23 WNW	WS: 9 G:21 W	WS: 8 G:17 WNW	WS: 8 G:18 WNW	WS: 8 G:16 WNW	WS: 6 G:13 W	WS: 6 G:14 W	WS: 7 G:14 W	WS: 7 G:14 W	WS: 7 G:14 W	WS: 8 G:14 W	WS: 8 G:15 W	WS: 9 G:15 W	WS: 10 G:16 W	WS: 10 G:16 W	WS: 10 G:17 WNW	WS: 10 G:17 WNW	WS: 10 G:17 WNW	WS: 10 G:17 WNW	WS: 10 G:17 WNW	WS: 9 G:16 WNW	WS: 8 G:15 WNW	WS: 7 G:12 WNW	WS: 5 G:11 WNW	WS: 5 G:10 WNW	WS: 5 G:9 WNW	WS: 4 G:8 WNW	
Houston Pilots M - Kinder 1	WS: 11 G:21 ESE	WS: 10 G:22 ESE	WS: 10 G:24 ESE	WS: 11 G:24 ESE	WS: 12 G:26 E	WS: 8 G:24 ESE	WS: 11 G:27 ESE	WS: 11 G:28 ESE	WS: 11 G:29 SE	WS: 12 G:21 WNW	WS: 9 G:21 WNW	WS: 6 G:17 WNW	WS: 8 G:17 WNW	WS: 8 G:17 WNW	WS: 8 G:15 WNW	WS: 6 G:13 W	WS: 6 G:13 W	WS: 7 G:14 W	WS: 7 G:14 W	WS: 8 G:14 W	WS: 8 G:15 W	WS: 9 G:15 W	WS: 10 G:16 W	WS: 10 G:16 W	WS: 10 G:17 WNW	WS: 10 G:17 WNW	WS: 10 G:17 WNW	WS: 10 G:17 WNW	WS: 10 G:17 WNW	WS: 10 G:17 WNW	WS: 9 G:16 WNW	WS: 8 G:15 WNW	WS: 7 G:12 WNW	WS: 5 G:10 WNW	WS: 5 G:10 WNW	WS: 5 G:9 WNW	WS: 4 G:8 WNW
Houston Pilots L - Greens Bayou	WS: 11 G:22 ESE	WS: 11 G:22 ESE	WS: 10 G:24 ESE	WS: 12 G:25 E	WS: 12 G:25 E	WS: 9 G:25 ESE	WS: 12 G:27 ESE	WS: 12 G:29 ESE	WS: 12 G:29 SE	WS: 11 G:21 SW	WS: 9 G:20 WNW	WS: 6 G:16 W	WS: 8 G:18 WNW	WS: 7 G:16 WNW	WS: 8 G:15 W	WS: 6 G:12 W	WS: 6 G:13 W	WS: 7 G:13 W	WS: 7 G:14 W	WS: 8 G:14 W	WS: 8 G:15 W	WS: 8 G:15 W	WS: 10 G:16 W	WS: 10 G:16 W	WS: 10 G:16 WNW	WS: 10 G:16 WNW	WS: 10 G:17 WNW	WS: 10 G:17 WNW	WS: 10 G:17 WNW	WS: 10 G:17 WNW	WS: 10 G:17 WNW	WS: 8 G:14 WNW	WS: 7 G:12 WNW	WS: 5 G:10 WNW	WS: 5 G:9 WNW	WS: 4 G:8 WNW	
Houston Pilots K - Shell Crude	WS: 12 G:22 ESE	WS: 11 G:21 ESE	WS: 10 G:24 ESE	WS: 13 G:26 E	WS: 12 G:25 E	WS: 11 G:27 ESE	WS: 12 G:28 ESE	WS: 12 G:28 ESE	WS: 12 G:29 SE	WS: 11 G:24 S	WS: 10 G:20 WNW	WS: 7 G:16 WNW	WS: 8 G:19 WNW	WS: 7 G:16 WNW	WS: 8 G:15 W	WS: 6 G:12 W	WS: 6 G:13 W	WS: 7 G:13 W	WS: 7 G:14 W	WS: 8 G:14 W	WS: 8 G:15 W	WS: 9 G:15 W	WS: 10 G:16 W	WS: 10 G:16 W	WS: 10 G:16 WNW	WS: 10 G:16 WNW	WS: 10 G:16 WNW	WS: 10 G:16 WNW	WS: 10 G:16 WNW	WS: 10 G:16 WNW	WS: 10 G:16 WNW	WS: 8 G:14 WNW	WS: 7 G:12 WNW	WS: 5 G:10 WNW	WS: 5 G:9 WNW	WS: 4 G:8 WNW	
Houston Pilots J - Lynchburg Ferries	WS: 13 G:24 E	WS: 10 G:20 E	WS: 9 G:23 ESE	WS: 14 G:27 ESE	WS: 11 G:25 E	WS: 12 G:29 ESE	WS: 12 G:28 ESE	WS: 12 G:29 ESE	WS: 11 G:28 SE	WS: 12 G:29 SE	WS: 10 G:19 WNW	WS: 8 G:17 WNW	WS: 7 G:18 WNW	WS: 6 G:15 W	WS: 8 G:15 W	WS: 6 G:12 W	WS: 6 G:13 W	WS: 7 G:13 W	WS: 8 G:14 W	WS: 8 G:15 W	WS: 8 G:15 W	WS: 9 G:15 W	WS: 10 G:16 W	WS: 10 G:16 W	WS: 10 G:16 W	WS: 10 G:16 W	WS: 10 G:16 W	WS: 10 G:16 W	WS: 10 G:16 W	WS: 10 G:16 W	WS: 10 G:16 W	WS: 8 G:14 WNW	WS: 7 G:12 WNW	WS: 5 G:10 WNW	WS: 5 G:10 WNW	WS: 4 G:9 WNW	
Houston Pilots I - Exxon 3	WS: 13 G:25 E	WS: 9 G:19 E	WS: 9 G:23 E	WS: 14 G:27 E	WS: 13 G:26 E	WS: 15 G:31 ESE	WS: 13 G:28 ESE	WS: 13 G:29 ESE	WS: 12 G:28 SE	WS: 16 G:33 SE	WS: 12 G:21 WNW	WS: 10 G:19 WNW	WS: 6 G:18 WNW	WS: 6 G:14 W	WS: 8 G:15 W	WS: 7 G:13 W	WS: 7 G:14 W	WS: 8 G:15 W	WS: 8 G:16 W	WS: 8 G:15 W	WS: 8 G:15 W	WS: 9 G:15 W	WS: 10 G:16 W	WS: 10 G:16 W	WS: 10 G:16 W	WS: 10 G:16 W	WS: 10 G:16 W	WS: 10 G:16 W	WS: 10 G:16 W	WS: 10 G:16 W	WS: 10 G:16 W	WS: 9 G:14 WNW	WS: 7 G:13 WNW	WS: 6 G:11 WNW	WS: 5 G:10 WNW	WS: 5 G:10 WNW	
Houston Pilots H - Morgans Point	WS: 16 G:26 E	WS: 12 G:22 E	WS: 11 G:22 E	WS: 17 G:28 E	WS: 16 G:28 E	WS: 18 G:31 ESE	WS: 16 G:29 ESE	WS: 17 G:31 ESE	WS: 14 G:28 SE	WS: 20 G:35 SE	WS: 15 G:23 WNW	WS: 13 G:21 WNW	WS: 9 G:19 WNW	WS: 8 G:15 WNW	WS: 10 G:16 W	WS: 8 G:14 W	WS: 8 G:15 W	WS: 9 G:15 W	WS: 9 G:16 W	WS: 9 G:16 W	WS: 10 G:16 W	WS: 10 G:16 W	WS: 10 G:16 W	WS: 10 G:16 W	WS: 10 G:16 W	WS: 10 G:16 W	WS: 10 G:16 W	WS: 10 G:16 W	WS: 10 G:16 W	WS: 10 G:16 W	WS: 9 G:15 WNW	WS: 8 G:13 WNW	WS: 7 G:12 WNW	WS: 6 G:11 WNW	WS: 6 G:11 WNW	WS: 6 G:11 WNW	
Houston Pilots G - 75/76	WS: 21 G:27 ESE	WS: 17 G:24 ESE	WS: 14 G:24 E	WS: 21 G:30 E	WS: 22 G:33 E	WS: 23 G:33 ESE	WS: 22 G:31 ESE	WS: 22 G:31 ESE	WS: 19 G:29 SE	WS: 24 G:35 SE	WS: 21 G:26 WNW	WS: 17 G:23 WNW	WS: 13 G:19 WNW	WS: 12 G:16 W	WS: 13 G:16 W	WS: 10 G:15 W	WS: 10 G:16 W	WS: 11 G:16 W	WS: 11 G:16 W	WS: 11 G:17 W	WS: 11 G:17 W	WS: 11 G:17 W	WS: 12 G:17 W	WS: 11 G:17 W	WS: 12 G:17 W	WS: 12 G:17 W	WS: 12 G:17 W	WS: 11 G:16 WNW	WS: 11 G:16 WNW	WS: 11 G:16 WNW	WS: 10 G:16 WNW	WS: 10 G:16 WNW	WS: 9 G:15 WNW	WS: 8 G:14 WNW	WS: 8 G:13 WNW	WS: 8 G:12 WNW	
Houston Pilots F - 63/64	WS: 22 G:28 ESE	WS: 18 G:24 ESE	WS: 18 G:27 E	WS: 23 G:31 E	WS: 26 G:36 ESE	WS: 26 G:35 ESE	WS: 23 G:32 ESE	WS: 22 G:31 ESE	WS: 19 G:29 SE	WS: 23 G:32 SE	WS: 23 G:29 WNW	WS: 14 G:18 WNW	WS: 14 G:16 WNW	WS: 14 G:17 W	WS: 15 G:16 W	WS: 12 G:12 W	WS: 12 G:12 W	WS: 12 G:12 W	WS: 12 G:12 W	WS: 12 G:12 W	WS: 12 G:12 W	WS: 12 G:12 W	WS: 12 G:12 W	WS: 12 G:12 W	WS: 12 G:12 W	WS: 12 G:12 W	WS: 12 G:12 W	WS: 12 G:12 W	WS: 12 G:12 W	WS: 12 G:12 W	WS: 11 G:11 WNW	WS: 10 G:10 WNW	WS: 9 G:9 WNW	WS: 9 G:9 WNW	WS: 9 G:9 WNW		
Houston Pilots E - 51/52	WS: 23 G:29 ESE	WS: 16 G:21 E	WS: 19 G:27 E	WS: 24 G:32 E	WS: 28 G:37 ESE	WS: 25 G:35 ESE	WS: 22 G:32 ESE	WS: 23 G:31 ESE	WS: 19 G:29 SE	WS: 20 G:29 SE	WS: 17 G:22 WNW	WS: 14 G:18 WNW	WS: 14 G:17 W	WS: 15 G:17 W	WS: 12 G:16 W	WS: 12 G:17 W	WS: 13 G:17 W	WS: 13 G:17 W	WS: 13 G:17 W	WS: 13 G:17 W	WS: 13 G:17 W	WS: 13 G:17 W	WS: 13 G:17 W	WS: 13 G:17 W	WS: 13 G:17 W	WS: 13 G:17 W	WS: 13 G:17 W	WS: 13 G:17 W	WS: 13 G:17 W	WS: 12 G:12 WNW	WS: 12 G:12 WNW	WS: 11 G:11 WNW	WS: 10 G:10 WNW	WS: 10 G:10 WNW	WS: 10 G:10 WNW		
Houston Pilots D - 37/38	WS: 22 G:29 ESE	WS: 13 G:21 E	WS: 19 G:26 E	WS: 24 G:31 E	WS: 26 G:35 E	WS: 24 G:33 ESE	WS: 24 G:30 ESE	WS: 25 G:32 ESE	WS: 19 G:29 SE	WS: 17 G:27 SE	WS: 24 G:30 WNW	WS: 14 G:18 WNW	WS: 14 G:17 WNW	WS: 15 G:18 W	WS: 13 G:17 W	WS: 13 G:17 W	WS: 13 G:17 W	WS: 13 G:17 W	WS: 13 G:17 W	WS: 13 G:17 W	WS: 13 G:17 W	WS: 13 G:17 W	WS: 13 G:17 W	WS: 13 G:17 W	WS: 13 G:17 W	WS: 13 G:17 W	WS: 13 G:17 W	WS: 13 G:17 W	WS: 13 G:17 W	WS: 11 G:11 WNW	WS: 11 G:11 WNW	WS: 10 G:10 WNW	WS: 10 G:10 WNW	WS: 10 G:10 WNW	WS: 10 G:10 WNW		
Houston Pilots C - 25/26	WS: 20 G:28 E	WS: 15 G:26 E	WS: 19 G:27 E	WS: 22 G:31 E	WS: 24 G:34 ESE	WS: 21 G:30 ESE	WS: 20 G:29 ESE	WS: 24 G:35 ESE	WS: 18 G:28 SE	WS: 16 G:25 SE	WS: 21 G:26 WNW	WS: 14 G:19 WNW	WS: 14 G:18 WNW	WS: 15 G:18 W	WS: 13 G:17 W	WS: 13 G:17 W	WS: 13 G:17 W	WS: 13 G:17 W	WS: 13 G:17 W	WS: 13 G:17 W	WS: 13 G:17 W	WS: 13 G:17 W	WS: 13 G:17 W	WS: 13 G:17 W	WS: 13 G:17 W	WS: 13 G:17 W	WS: 13 G:17 W	WS: 13 G:17 W	WS: 13 G:17 W	WS: 11 G:11 WNW	WS: 11 G:11 WNW	WS: 10 G:10 WNW	WS: 10 G:10 WNW	WS: 10 G:10 WNW	WS: 10 G:10 WNW		
Houston Pilots B - 11/12	WS: 22 G:29 ESE	WS: 16 G:30 E	WS: 22 G:28 E	WS: 25 G:33 E	WS: 25 G:33 E	WS: 21 G:29 ESE	WS: 24 G:32 ESE	WS: 23 G:32 ESE	WS: 20 G:28 SE	WS: 17 G:25 WSW	WS: 14 G:20 WNW	WS: 14 G:18 WNW	WS: 15 G:18 W	WS: 13 G:17 W	WS: 13 G:17 W	WS: 14 G:18 W	WS: 14 G:18 W	WS: 14 G:18 W	WS: 14 G:18 W	WS: 14 G:18 W	WS: 14 G:18 W	WS: 14 G:18 W	WS: 14 G:18 W	WS: 14 G:18 W	WS: 14 G:18 W	WS: 14 G:18 W	WS: 14 G:18 W	WS: 14 G:18 W	WS: 14 G:18 W	WS: 13 G:13 WNW	WS: 12 G:12 WNW	WS: 11 G:11 WNW	WS: 11 G:11 WNW	WS: 11 G:11 WNW	WS: 10 G:10 WNW		
Houston Pilots A - 1 & 2 Bravo	WS: 25 G:31 E	WS: 25 G:32 E	WS: 27 G:32 E	WS: 27 G:33 E	WS: 27 G:33 E	WS: 27 G:34 ESE	WS: 25 G:32 ESE	WS: 23 G:29 ESE	WS: 23 G:30 SE	WS: 19 G:25 S	WS: 21 G:23 WNW	WS: 17 G:18 WNW	WS: 17 G:18 WNW	WS: 18 G:18 W	WS: 15 G:18 W	WS: 15 G:18 W	WS: 15 G:18 W	WS: 15 G:18 W	WS: 15 G:18 W	WS: 15 G:18 W	WS: 15 G:18 W	WS: 15 G:18 W	WS: 15 G:18 W	WS: 15 G:18 W	WS: 15 G:18 W	WS: 15 G:18 W	WS: 15 G:18 W	WS: 15 G:18 W	WS: 14 G:14 WNW	WS: 14 G:14 WNW	WS: 13 G:13 WNW	WS: 13 G:13 WNW	WS: 12 G:12 WNW	WS: 12 G:12 WNW	WS: 12 G:12 WNW		

See slides below for official thoughts on winds.

Houston Pilots: Fri. 10/28/2022



Forecast Discussion

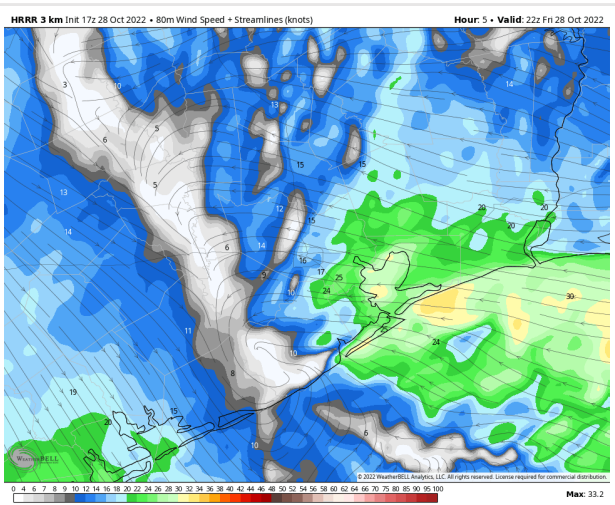
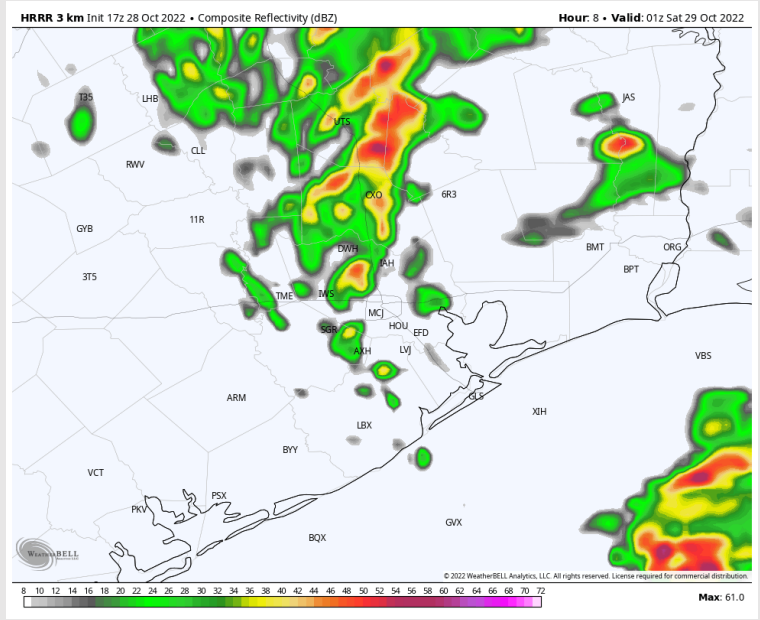
Precip: Anticipating this line of storms capable of producing lightning, locally heavy downpours, damaging wind gusts and small hail to continue through 4PM today. Between 4-8PM, showers and storms will occur in a much more scattered fashion. Then after 8PM through midnight, another organized wave of weaker showers/storms will move through the area.

Wind: Sustained winds at 20-25 kts out of the ESE until 9PM. Then winds will shift to be out of the NW still at 20-25 kts. After 10PM, sustained winds begin to calm to 15-20 kts then to 13-18 kts as we near midnight. Gusts of 30-35 kts possible as this stronger line of storms moves through.

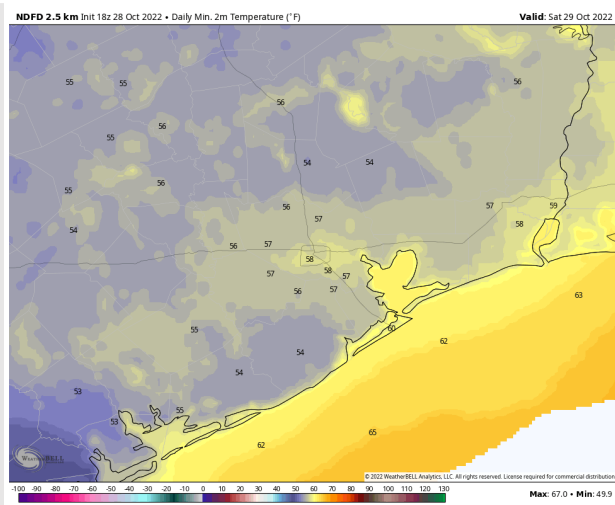
Temps: Low temps Saturday morning in the low 60s F at the boarding station and in the upper 50s F at all other stations.

Visibility: Locally heavy downpours will cause low visibilities of less than 2 miles until 11PM.

Precip Forecast: 8 PM CT



Wind Speed
5 PM CT



Low Temps
Saturday AM

Houston Pilots: sat. 10/29/2022



Forecast Discussion

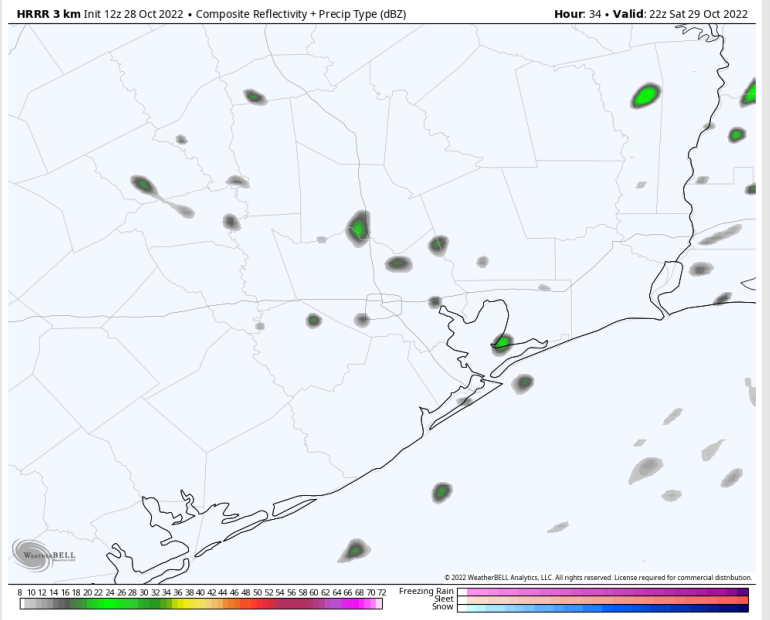
Precip: Expecting a slight chance of a lingering shower (10%) in the early morning from 12AM – 1AM. Anticipating mostly dry conditions the rest of the day with 10% chance of an isolated shower between 4-6PM.

Wind: Sustained WNW winds throughout the entire day Saturday. Winds N of Morgan’s Point will be 11-16 kts all AM up until about 8PM where they will subside to 5-8 kts throughout the night. S of Morgan’s Point will be 14-18 kts throughout the entire day and evening. Wind gusts of up to 20 kts will be possible across all stations, most likely in the late AM early PM hours.

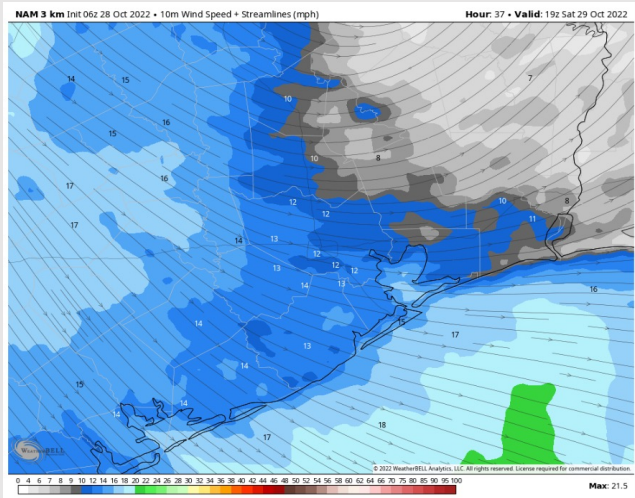
Temps: High temps Saturday in the upper 60s F near the boarding station and in the upper 60s F to near 70 F at all other stations.

Visibility: Not anticipating visibility concerns at this time.

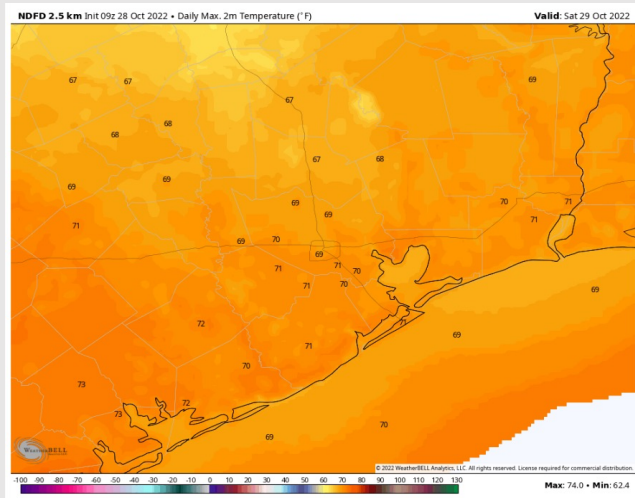
Precip Forecast: 12 PM CT



Wind Speed
12 PM CT



High Temps
Saturday



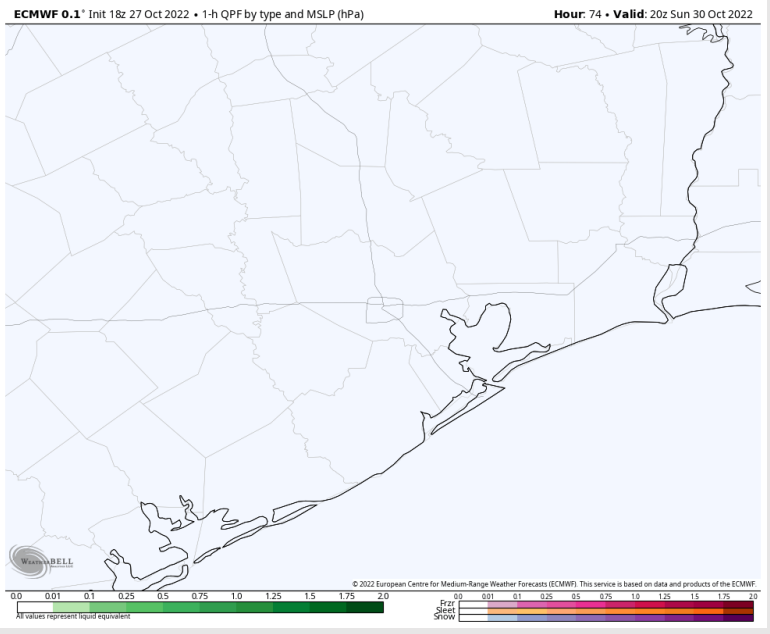
Houston Pilots: Sun. 10/30/2022



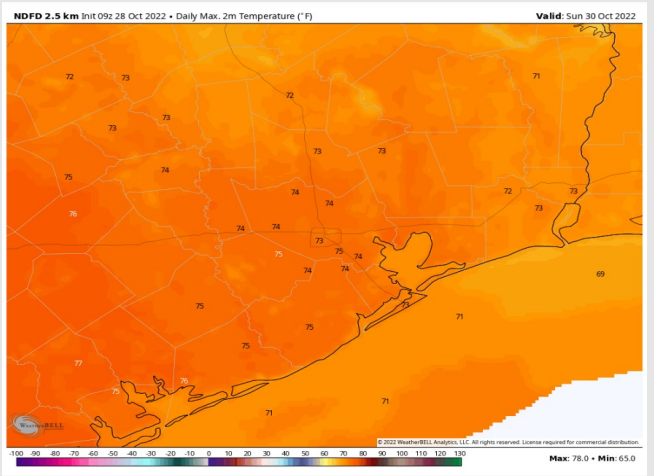
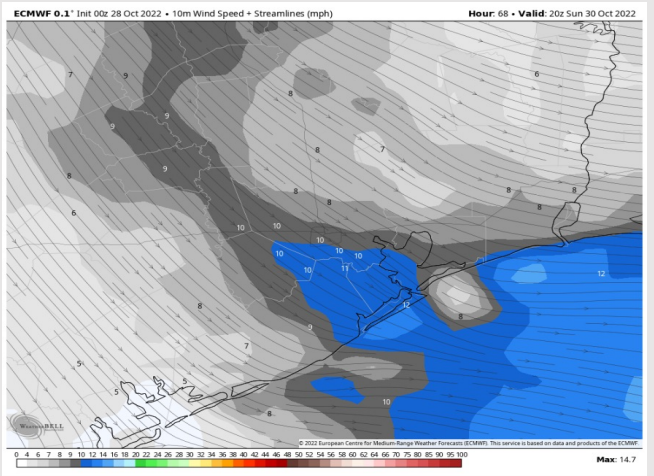
Forecast Discussion

- Precip:** Anticipating dry conditions Sunday.
- Wind:** Sustained winds out of the W Sunday AM 8-13 kts. Winds will gradually veer out of the NW throughout the day and become NW by 2 PM. Around 11 PM winds will become more NNW, still at 8-13 kts. Gusts of 14-18 kts possible in the early afternoon.
- Temps:** High temps Sunday in the low 70s F at the boarding station and in the mid 70s F at all other stations.
- Visibility:** Not favoring any concerns for reduced visibility.

Precip Forecast: 3 PM CT

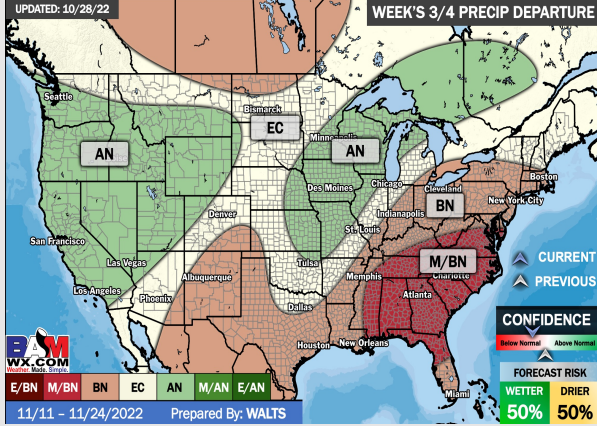
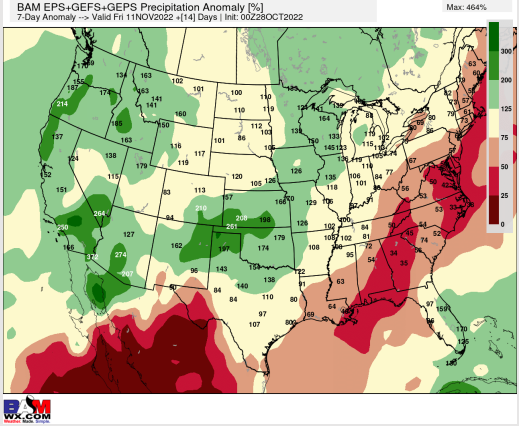
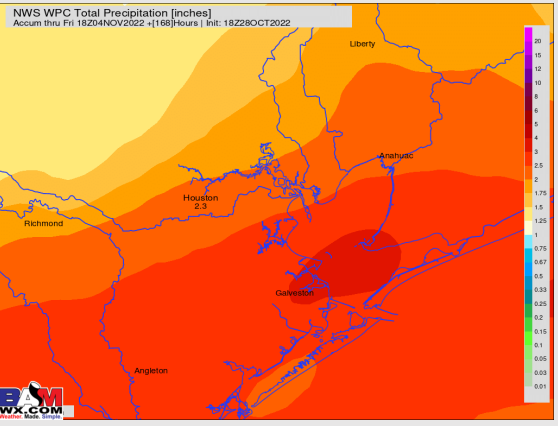
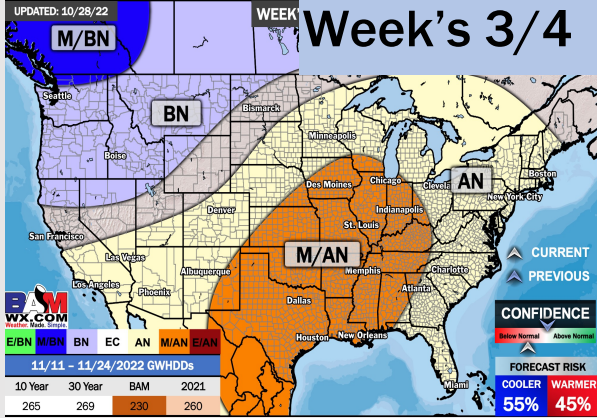
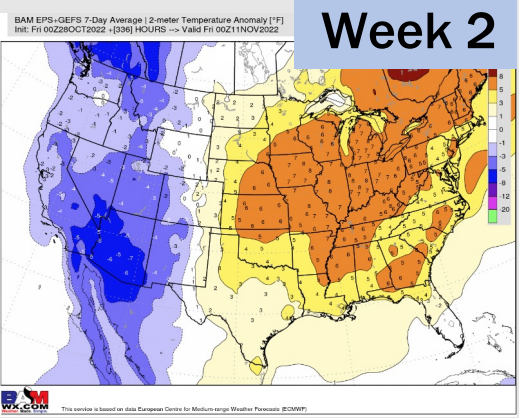
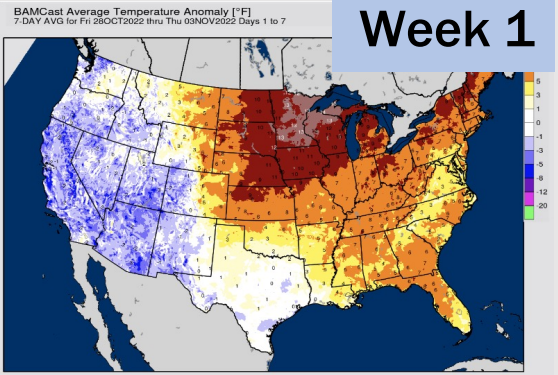


Wind Speed
3 PM CT



High Temps
Sunday

Houston Pilots: 10/28/22



- Temperatures expected to be near or slightly below normal next week. More widespread chances of rain going into Tuesday and Wednesday.
- Week 2 to feature slightly above normal temperatures and below normal precipitation.
- The weeks ¾ timeframe into November looks to feature above normal temperatures and below normal to normal risks for precip.