

Houston Pilots Forecast Package

Houston Pilots

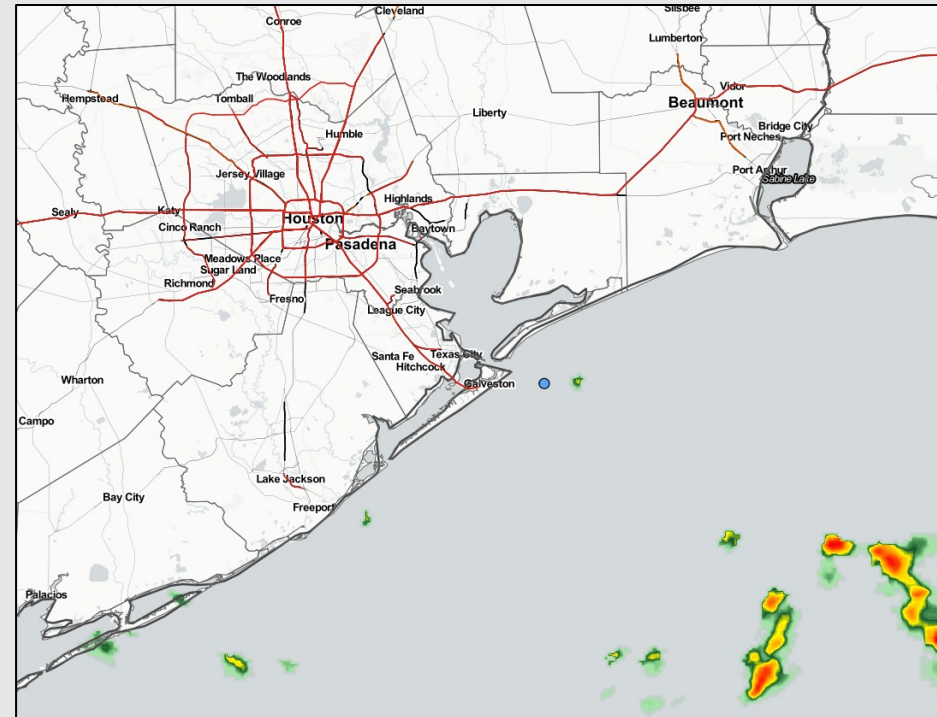
Updated: 5:00 AM CT

Wednesday, September 7, 2022

Forecaster: Vince Bryan

Weather Headlines

- While daily rain chances continue, coverage will keep becoming more isolated over the next several days.
- No tropical activity is favored in the Gulf over the next 7-10 days with Danielle and Earl remaining in the Atlantic.
- Winds to remain calmer with any elevated winds/gusts likely coming from pockets of stronger precipitation.



Radar/ NWS Alerts: 5:00 AM CT



As always, please do not hesitate to reach out to us with any forecast questions via the chat option on the Weather Porthole or our on-call number, **(317)-560-8122** press 1 for forecast questions.

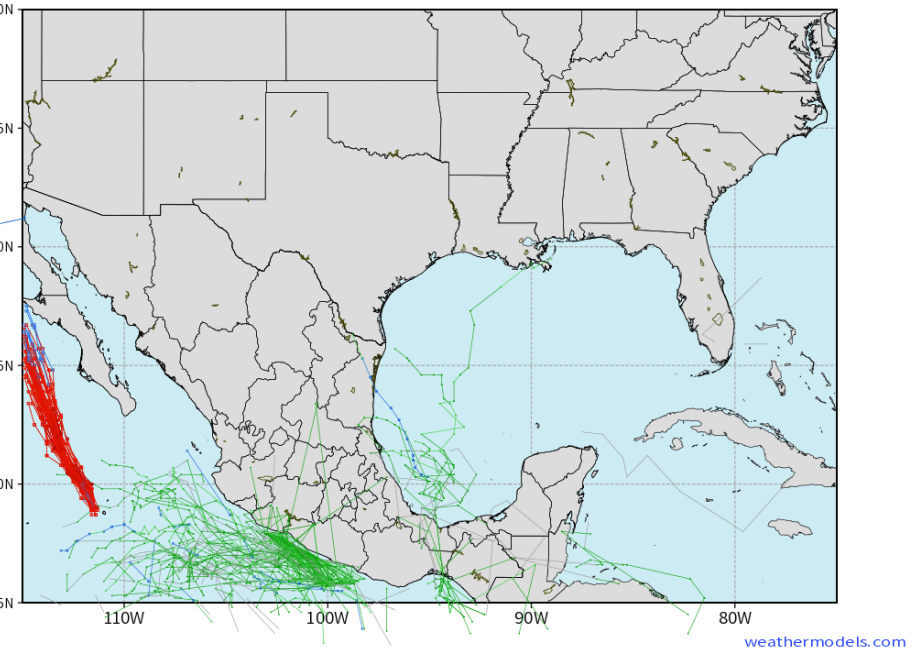
Houston Pilots Extended Range Tropical Report



European Data Tracks Next 10 Days

ECMWF GULF EPS Cyclone Locations --> Next [10-days]
INIT: 00Z07SEP2022 --> UNTIL 00Z17SEP2022

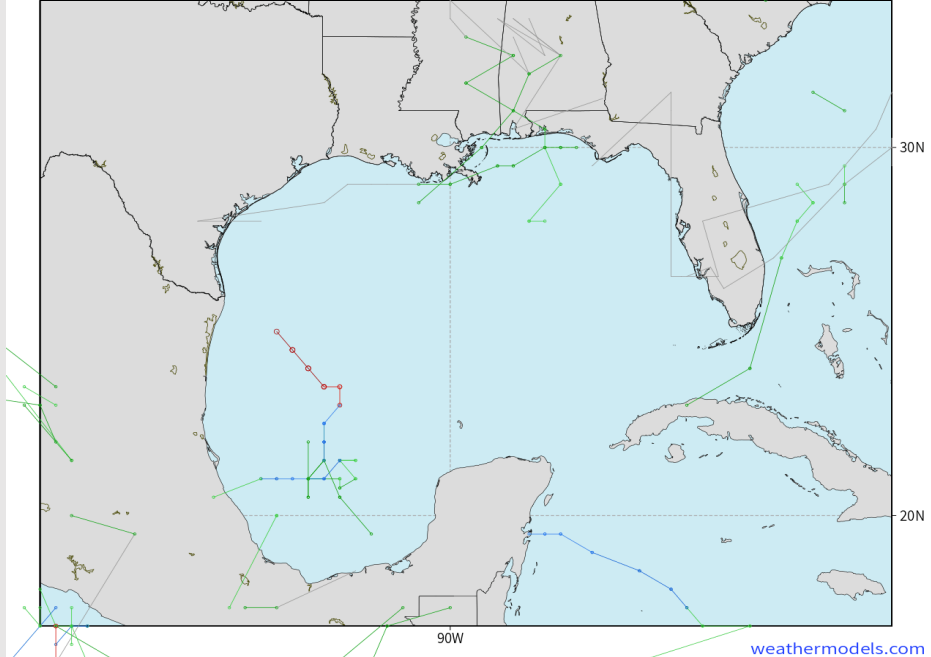
- o-o ENSEMBLE MEAN
- o-o 1000 - 1010 hPa
- o-o 980 - 999 hPa
- o-o 960 - 979 hPa
- o-o 950 - 959 hPa
- o-o < 950 hPa



American Data Tracks Next 10 Days

NCEP GFSv12 Ensemble Cyclones +240 Hours
INIT: 00Z07SEP2022 --> UNTIL 00Z17SEP2022

- o-o = 1010 hPa
- o-o 1000 - 1010 hPa
- o-o 980 - 999 hPa
- o-o 960 - 979 hPa
- o-o 950 - 959 hPa
- o-o < 950 hPa



No tropical threats over the next 7 days in the Gulf Of Mexico. Any tropical activity will stay confined to the Atlantic.



Houston Pilots Visibility Report



Confidence



Time	09-07-2022 Wed 3am	09-07-2022 Wed 4am	09-07-2022 Wed 5am	09-07-2022 Wed 6am	09-07-2022 Wed 7am	09-07-2022 Wed 8am	09-07-2022 Wed 9am	09-07-2022 Wed 10am	09-07-2022 Wed 11am	09-07-2022 Wed 12pm	09-07-2022 Wed 1pm	09-07-2022 Wed 2pm	09-07-2022 Wed 3pm	09-07-2022 Wed 4pm	09-07-2022 Wed 5pm	09-07-2022 Wed 6pm	09-07-2022 Wed 7pm	09-07-2022 Wed 8pm	09-07-2022 Wed 9pm	09-07-2022 Wed 10pm	09-07-2022 Wed 11pm	09-08-2022 Thu 12am	09-08-2022 Thu 1am	09-08-2022 Thu 2am	09-08-2022 Thu 3am	09-08-2022 Thu 4am	09-08-2022 Thu 5am	09-08-2022 Thu 6am	09-08-2022 Thu 7am	09-08-2022 Thu 8am	09-08-2022 Thu 9am	09-08-2022 Thu 10am	09-08-2022 Thu 11am	09-08-2022 Thu 12pm	09-08-2022 Thu 1pm	09-08-2022 Thu 2pm	
Houston Pilots N - 610 Bridge	10.000	10.000	10.000	10.000	6.935	9.038	10.000	10.000	10.000	10.000	10.000	10.000	10.000	10.000	10.000	10.000	10.000	10.000	10.000	10.000	10.000	10.000	10.000	10.000	10.000	10.000	8.988	7.954	6.964	6.513	8.988	10.000	10.000	10.000	10.000	10.000	
Houston Pilots M - Kinder 1	10.000	10.000	10.000	10.000	6.935	9.038	10.000	10.000	10.000	10.000	10.000	10.000	10.000	10.000	10.000	10.000	10.000	10.000	10.000	10.000	10.000	10.000	10.000	10.000	10.000	10.000	8.988	7.954	7.212	6.513	8.988	10.000	10.000	10.000	10.000	10.000	
Houston Pilots L - Greens Bayou	10.000	10.000	10.000	10.000	6.923	9.038	10.000	10.000	10.000	10.000	10.000	10.000	10.000	10.000	10.000	10.000	10.000	10.000	10.000	10.000	10.000	10.000	10.000	10.000	10.000	10.000	8.988	7.954	7.573	7.146	8.988	10.000	10.000	10.000	10.000	10.000	
Houston Pilots K - Shell Crude	10.000	10.000	10.000	10.000	6.893	9.038	10.000	10.000	10.000	10.000	10.000	10.000	10.000	10.000	10.000	10.000	10.000	10.000	10.000	10.000	10.000	10.000	10.000	10.000	10.000	10.000	8.988	8.569	8.033	8.033	8.988	10.000	10.000	10.000	10.000	10.000	
Houston Pilots J - Lynchburg Ferries	10.000	10.000	10.000	10.000	6.890	9.038	10.000	10.000	10.000	10.000	10.000	10.000	10.000	10.000	10.000	10.000	10.000	10.000	10.000	10.000	10.000	10.000	10.000	10.000	10.000	10.000	8.988	8.988	8.033	8.033	8.988	10.000	10.000	10.000	10.000	10.000	
Houston Pilots I - Exxon 3	10.000	10.000	10.000	10.000	6.890	7.924	10.000	10.000	10.000	10.000	10.000	10.000	10.000	10.000	10.000	10.000	10.000	10.000	10.000	10.000	10.000	10.000	10.000	10.000	10.000	10.000	8.988	8.988	8.467	8.033	8.988	10.000	10.000	10.000	10.000	10.000	
Houston Pilots H - Morgans Point	10.000	10.000	10.000	10.000	8.350	9.038	10.000	10.000	10.000	10.000	10.000	10.000	10.000	10.000	10.000	10.000	10.000	10.000	10.000	10.000	10.000	10.000	10.000	10.000	10.000	10.000	9.438	8.988	8.988	8.988	8.988	10.000	10.000	10.000	10.000	10.000	
Houston Pilots G - 75/76	10.000	10.000	10.000	10.000	9.691	9.435	10.000	10.000	10.000	10.000	10.000	10.000	10.000	10.000	10.000	10.000	10.000	10.000	10.000	10.000	10.000	10.000	10.000	10.000	10.000	10.000	10.000	10.000	10.000	8.988	8.988	8.988	10.000	10.000	10.000	10.000	10.000
Houston Pilots F - 63/64	10.000	10.000	10.000	10.000	10.000	10.000	10.000	10.000	10.000	10.000	10.000	10.000	10.000	10.000	10.000	10.000	10.000	10.000	10.000	10.000	10.000	10.000	10.000	10.000	10.000	10.000	10.000	10.000	10.000	10.000	10.000	8.988	8.988	10.000	10.000	10.000	10.000
Houston Pilots E - 51/52	10.000	10.000	10.000	10.000	10.000	10.000	10.000	10.000	10.000	10.000	10.000	10.000	10.000	10.000	10.000	10.000	10.000	10.000	10.000	10.000	10.000	10.000	10.000	10.000	10.000	10.000	10.000	10.000	10.000	10.000	10.000	8.988	8.988	10.000	10.000	10.000	10.000
Houston Pilots D - 37/38	10.000	10.000	10.000	10.000	10.000	10.000	10.000	10.000	10.000	10.000	10.000	10.000	10.000	10.000	10.000	10.000	10.000	10.000	10.000	10.000	10.000	10.000	10.000	10.000	10.000	10.000	10.000	10.000	10.000	10.000	10.000	8.988	8.988	10.000	10.000	10.000	10.000
Houston Pilots C - 25/26	10.000	10.000	10.000	10.000	10.000	10.000	10.000	10.000	10.000	10.000	10.000	10.000	10.000	10.000	10.000	10.000	10.000	10.000	10.000	10.000	10.000	10.000	10.000	10.000	10.000	10.000	10.000	10.000	10.000	10.000	10.000	8.988	8.988	10.000	10.000	10.000	10.000
Houston Pilots B - 11/12	10.000	10.000	10.000	10.000	10.000	10.000	10.000	10.000	10.000	10.000	10.000	10.000	10.000	10.000	10.000	10.000	10.000	10.000	10.000	10.000	10.000	10.000	10.000	10.000	10.000	10.000	10.000	10.000	10.000	10.000	10.000	8.988	8.988	10.000	10.000	10.000	10.000
Houston Pilots A - 1 & 2 Bravo	10.000	10.000	10.000	10.000	10.000	10.000	10.000	10.000	10.000	10.000	10.000	10.000	10.000	10.000	10.000	10.000	10.000	10.000	10.000	10.000	10.000	10.000	10.000	10.000	10.000	10.000	10.000	10.000	10.000	9.822	8.988	8.988	9.822	9.822	10.000	10.000	10.000

Houston Pilots Wind Report



Example

Sustained wind 13 MPH
Gusts 18 MPH
Wind from the N

WS: 13
G:18
N

Time	09-07-2022 Wed 3am	09-07-2022 Wed 4am	09-07-2022 Wed 5am	09-07-2022 Wed 6am	09-07-2022 Wed 7am	09-07-2022 Wed 8am	09-07-2022 Wed 9am	09-07-2022 Wed 10am	09-07-2022 Wed 11am	09-07-2022 Wed 12pm	09-07-2022 Wed 1pm	09-07-2022 Wed 2pm	09-07-2022 Wed 3pm	09-07-2022 Wed 4pm	09-07-2022 Wed 5pm	09-07-2022 Wed 6pm	09-07-2022 Wed 7pm	09-07-2022 Wed 8pm	09-07-2022 Wed 9pm	09-07-2022 Wed 10pm	09-07-2022 Wed 11pm	09-08-2022 Thu 12am	09-08-2022 Thu 1am	09-08-2022 Thu 2am	09-08-2022 Thu 3am	09-08-2022 Thu 4am	09-08-2022 Thu 5am	09-08-2022 Thu 6am	09-08-2022 Thu 7am	09-08-2022 Thu 8am	09-08-2022 Thu 9am	09-08-2022 Thu 10am	09-08-2022 Thu 11am	09-08-2022 Thu 12pm	09-08-2022 Thu 1pm	09-08-2022 Thu 2pm	
Houston Pilots N - 610 Bridge	WS: 2 G:2 ESE	WS: 1 G:2 SSW	WS: 2 G:3 WSW	WS: 3 G:4 NW	WS: 3 G:5 NW	WS: 1 G:6 NW	WS: 3 G:7 WNW	WS: 4 G:5 WNW	WS: 4 G:5 NW	WS: 3 G:4 NNW	WS: 3 G:4 WNW	WS: 4 G:5 SE	WS: 5 G:7 SE	WS: 4 G:6 ENE	WS: 6 G:8 ENE	WS: 6 G:11 E	WS: 7 G:11 E	WS: 5 G:9 SE	WS: 4 G:7 SE	WS: 3 G:5 SSE	WS: 3 G:4 SW	WS: 2 G:4 W	WS: 2 G:3 NNW	WS: 2 G:3 NNW	WS: 1 G:3 NNW	WS: 2 G:4 NNW	WS: 3 G:4 NNW	WS: 3 G:5 N	WS: 4 G:6 N	WS: 4 G:8 N	WS: 5 G:9 NNE	WS: 6 G:9 NNE	WS: 7 G:10 NNE	WS: 7 G:10 NNE	WS: 7 G:11 NE	WS: 8 G:12 NE	WS: 8 G:12 NE
Houston Pilots M - Kinder 1	WS: 2 G:2 ESE	WS: 1 G:2 S	WS: 2 G:3 SW	WS: 3 G:4 NW	WS: 3 G:5 NW	WS: 1 G:6 NW	WS: 3 G:8 WNW	WS: 4 G:5 WNW	WS: 3 G:4 NNW	WS: 3 G:4 SW	WS: 2 G:3 SSE	WS: 3 G:7 ENE	WS: 5 G:7 ENE	WS: 5 G:8 ENE	WS: 6 G:8 ENE	WS: 6 G:10 E	WS: 7 G:11 E	WS: 5 G:9 SE	WS: 3 G:7 SE	WS: 3 G:4 SSE	WS: 2 G:5 W	WS: 2 G:4 W	WS: 2 G:3 NNW	WS: 2 G:3 NNW	WS: 2 G:2 NNW	WS: 2 G:2 NNW	WS: 2 G:3 NNW	WS: 3 G:4 N	WS: 3 G:4 N	WS: 4 G:6 N	WS: 5 G:8 NNE	WS: 6 G:9 NNE	WS: 7 G:10 NNE	WS: 7 G:10 NNE	WS: 7 G:11 NE	WS: 8 G:12 NE	WS: 8 G:12 NE
Houston Pilots L - Greens Bayou	WS: 2 G:2 SE	WS: 1 G:2 S	WS: 2 G:4 SW	WS: 3 G:4 WNW	WS: 3 G:6 NW	WS: 2 G:6 NW	WS: 3 G:8 WNW	WS: 4 G:5 W	WS: 4 G:3 NW	WS: 2 G:3 WSW	WS: 2 G:3 SE	WS: 4 G:5 ENE	WS: 6 G:7 NE	WS: 6 G:8 ENE	WS: 8 G:10 NE	WS: 6 G:10 E	WS: 7 G:11 ESE	WS: 5 G:9 ESE	WS: 3 G:6 SE	WS: 2 G:4 SSE	WS: 2 G:4 NW	WS: 2 G:4 NNW	WS: 2 G:3 NNW	WS: 2 G:2 NNW	WS: 2 G:2 NNW	WS: 2 G:3 NNW	WS: 3 G:3 N	WS: 3 G:4 N	WS: 4 G:6 N	WS: 5 G:7 NNE	WS: 6 G:9 NNE	WS: 7 G:10 NNE	WS: 7 G:10 NNE	WS: 8 G:12 NE	WS: 8 G:12 NE	WS: 8 G:12 NE	
Houston Pilots K - Shell Crane	WS: 2 G:2 SE	WS: 1 G:2 S	WS: 3 G:4 SW	WS: 3 G:5 WNW	WS: 3 G:6 NW	WS: 1 G:6 NW	WS: 3 G:8 NW	WS: 4 G:5 NW	WS: 3 G:4 NW	WS: 2 G:3 W	WS: 2 G:3 ESE	WS: 4 G:5 NNE	WS: 6 G:7 NE	WS: 6 G:8 NE	WS: 8 G:10 ENE	WS: 6 G:10 E	WS: 7 G:10 ESE	WS: 5 G:9 ESE	WS: 3 G:6 SE	WS: 2 G:4 SSE	WS: 2 G:5 NW	WS: 2 G:4 NNW	WS: 2 G:3 NNW	WS: 2 G:3 NNW	WS: 2 G:2 NNW	WS: 2 G:2 NNW	WS: 3 G:3 NNW	WS: 3 G:4 N	WS: 4 G:6 N	WS: 5 G:7 NNE	WS: 6 G:9 NNE	WS: 7 G:10 NNE	WS: 7 G:10 NNE	WS: 8 G:12 NE	WS: 8 G:12 NE	WS: 8 G:12 NE	
Houston Pilots J - Lynchburg Ferries	WS: 2 G:3 SSE	WS: 1 G:2 S	WS: 3 G:4 SSW	WS: 3 G:5 WNW	WS: 3 G:6 NW	WS: 2 G:6 NW	WS: 3 G:9 NW	WS: 3 G:6 W	WS: 3 G:4 NW	WS: 2 G:3 WSW	WS: 2 G:3 S	WS: 5 G:5 NNE	WS: 4 G:6 NE	WS: 4 G:7 NE	WS: 10 G:13 NE	WS: 6 G:9 ESE	WS: 7 G:11 ESE	WS: 5 G:9 ESE	WS: 3 G:6 SE	WS: 3 G:4 SSE	WS: 3 G:5 NNW	WS: 3 G:4 WSW	WS: 2 G:4 NNW	WS: 2 G:3 NNW	WS: 2 G:3 NNW	WS: 2 G:3 NNW	WS: 3 G:4 N	WS: 4 G:5 SW	WS: 4 G:6 N	WS: 5 G:7 NNE	WS: 6 G:9 NNE	WS: 7 G:10 NNE	WS: 7 G:10 NNE	WS: 8 G:12 NE	WS: 8 G:12 NE	WS: 8 G:12 NE	
Houston Pilots I - Exxon 3	WS: 2 G:5 SSW	WS: 1 G:4 SW	WS: 3 G:7 SW	WS: 3 G:7 WNW	WS: 3 G:7 NW	WS: 1 G:6 NW	WS: 4 G:9 NW	WS: 3 G:6 W	WS: 3 G:4 WNW	WS: 2 G:3 W	WS: 2 G:3 SSW	WS: 4 G:5 NE	WS: 4 G:6 ENE	WS: 5 G:7 E	WS: 8 G:10 ENE	WS: 7 G:9 ESE	WS: 7 G:11 ESE	WS: 5 G:9 ESE	WS: 3 G:6 SE	WS: 3 G:5 SSE	WS: 3 G:4 NNW	WS: 3 G:4 SE	WS: 2 G:4 NNW	WS: 2 G:4 NNW	WS: 2 G:4 NNW	WS: 2 G:4 NNW	WS: 4 G:5 NNW	WS: 4 G:5 NNE	WS: 5 G:7 NNE	WS: 6 G:8 NNE	WS: 7 G:9 NNE	WS: 8 G:10 NNE	WS: 8 G:10 NNE	WS: 9 G:11 NNE	WS: 9 G:11 NNE	WS: 9 G:12 NE	WS: 9 G:12 NE
Houston Pilots H - Morgans Point	WS: 2 G:6 SW	WS: 3 G:7 WSW	WS: 4 G:9 WSW	WS: 4 G:9 WNW	WS: 4 G:8 WNW	WS: 3 G:7 NW	WS: 5 G:9 NW	WS: 3 G:6 WNW	WS: 2 G:4 W	WS: 3 G:4 SSW	WS: 4 G:4 SE	WS: 5 G:6 ESE	WS: 5 G:6 ESE	WS: 5 G:7 SE	WS: 7 G:8 SE	WS: 7 G:10 SE	WS: 7 G:11 ESE	WS: 6 G:9 ESE	WS: 4 G:6 SE	WS: 3 G:5 SE	WS: 3 G:5 NNW	WS: 3 G:5 NNW	WS: 3 G:4 NNW	WS: 3 G:4 NNW	WS: 3 G:4 NNW	WS: 4 G:5 NNW	WS: 4 G:5 NNW	WS: 5 G:6 NNW	WS: 6 G:7 NNW	WS: 6 G:8 NNW	WS: 7 G:9 NNW	WS: 8 G:10 NNW	WS: 8 G:10 NNW	WS: 9 G:11 NNW	WS: 9 G:11 NNW	WS: 9 G:12 NE	WS: 9 G:12 NE
Houston Pilots G - 75/76	WS: 3 G:6 SW	WS: 4 G:8 WSW	WS: 6 G:9 WSW	WS: 6 G:8 W	WS: 7 G:8 WNW	WS: 5 G:7 NW	WS: 7 G:8 NW	WS: 3 G:5 WNW	WS: 2 G:4 SE	WS: 3 G:5 SE	WS: 6 G:6 SE	WS: 6 G:7 SE	WS: 7 G:7 SE	WS: 7 G:7 SSE	WS: 9 G:10 SSE	WS: 8 G:10 SE	WS: 7 G:11 ESE	WS: 6 G:10 ESE	WS: 5 G:7 SE	WS: 4 G:6 SE	WS: 4 G:6 WNW	WS: 4 G:5 NNW	WS: 4 G:5 NNW	WS: 4 G:5 NNW	WS: 4 G:5 NNW	WS: 5 G:6 NNW	WS: 5 G:6 NNW	WS: 6 G:7 NNW	WS: 6 G:8 NNW	WS: 7 G:9 NNW	WS: 8 G:10 NNW	WS: 8 G:10 NNW	WS: 9 G:11 NNW	WS: 9 G:11 NNW	WS: 9 G:12 NE	WS: 9 G:12 NE	
Houston Pilots F - 63/64	WS: 3 G:6 SW	WS: 7 G:5 WSW	WS: 6 G:7 W	WS: 6 G:7 WNW	WS: 7 G:8 WNW	WS: 6 G:7 NW	WS: 8 G:8 NW	WS: 4 G:5 NW	WS: 2 G:4 S	WS: 3 G:5 ENE	WS: 5 G:6 ESE	WS: 6 G:6 ESE	WS: 5 G:7 SSE	WS: 5 G:7 SSE	WS: 10 G:11 SSE	WS: 8 G:10 SSE	WS: 7 G:10 ESE	WS: 7 G:10 ESE	WS: 4 G:5 ESE	WS: 4 G:5 W	WS: 4 G:4 SW	WS: 4 G:5 WSW	WS: 4 G:6 NNW	WS: 4 G:6 NNW	WS: 5 G:7 NNW	WS: 5 G:7 NNW	WS: 6 G:8 NNW	WS: 6 G:8 NNW	WS: 7 G:9 NNW	WS: 8 G:10 NNW	WS: 8 G:10 NNW	WS: 9 G:11 NNW	WS: 9 G:11 NNW	WS: 9 G:12 NE	WS: 9 G:12 NE	WS: 9 G:12 NE	
Houston Pilots E - 51/52	WS: 2 G:6 SW	WS: 4 G:6 W	WS: 6 G:7 W	WS: 5 G:6 WNW	WS: 6 G:6 WNW	WS: 6 G:7 NW	WS: 6 G:7 NW	WS: 5 G:5 NW	WS: 4 G:4 W	WS: 3 G:5 ESE	WS: 4 G:5 ESE	WS: 5 G:5 ESE	WS: 4 G:5 SSE	WS: 4 G:5 SSE	WS: 11 G:11 SSE	WS: 8 G:10 SSE	WS: 7 G:10 ESE	WS: 7 G:9 ESE	WS: 5 G:5 ESE	WS: 4 G:4 SE	WS: 4 G:4 SW	WS: 4 G:5 WSW	WS: 4 G:5 NNW	WS: 5 G:6 NNW	WS: 5 G:6 NNW	WS: 6 G:7 NNW	WS: 6 G:7 NNW	WS: 7 G:8 NNW	WS: 8 G:9 NNW	WS: 8 G:9 NNW	WS: 9 G:10 NNW	WS: 9 G:10 NNW	WS: 9 G:11 NNW	WS: 9 G:11 NNW	WS: 9 G:12 NE	WS: 9 G:12 NE	
Houston Pilots D - 37/38	WS: 2 G:5 SSW	WS: 3 G:5 W	WS: 5 G:6 WNW	WS: 5 G:5 WNW	WS: 5 G:5 WNW	WS: 6 G:6 NW	WS: 6 G:6 NNW	WS: 6 G:6 NNW	WS: 4 G:4 SW	WS: 5 G:5 ESE	WS: 3 G:4 ESE	WS: 4 G:4 ESE	WS: 4 G:5 SE	WS: 8 G:8 SSE	WS: 10 G:11 SSE	WS: 8 G:10 SSE	WS: 6 G:9 SE	WS: 5 G:7 E	WS: 4 G:6 ESE	WS: 4 G:6 NNW	WS: 4 G:6 NNW	WS: 4 G:5 NNW	WS: 4 G:5 NNW	WS: 5 G:6 NNW	WS: 6 G:7 NNW	WS: 6 G:7 NNW	WS: 7 G:8 NNW	WS: 8 G:9 NNW	WS: 8 G:9 NNW	WS: 9 G:10 NNW	WS: 9 G:10 NNW	WS: 10 G:11 NNW	WS: 10 G:11 NNW	WS: 10 G:12 NE	WS: 10 G:12 NE		
Houston Pilots C - 25/26	WS: 2 G:5 SSW	WS: 2 G:5 WSW	WS: 4 G:5 WNW	WS: 5 G:5 NW	WS: 4 G:5 NW	WS: 5 G:6 NNW	WS: 6 G:6 NNW	WS: 6 G:6 NNW	WS: 4 G:4 SW	WS: 4 G:5 SE	WS: 2 G:3 ESE	WS: 4 G:4 ESE	WS: 4 G:5 SE	WS: 8 G:8 SSE	WS: 9 G:10 SSE	WS: 7 G:9 SSE	WS: 6 G:8 E	WS: 5 G:7 E	WS: 4 G:6 ESE	WS: 4 G:5 ESE	WS: 4 G:5 NNW	WS: 4 G:5 NNW	WS: 4 G:5 NNW	WS: 5 G:6 NNW	WS: 6 G:7 NNW	WS: 6 G:7 NNW	WS: 7 G:8 NNW	WS: 8 G:9 NNW	WS: 8 G:9 NNW	WS: 9 G:10 NNW	WS: 9 G:10 NNW	WS: 10 G:11 NNW	WS: 10 G:11 NNW	WS: 10 G:12 NE	WS: 10 G:12 NE		
Houston Pilots B - 11/12	WS: 2 G:5 SSW	WS: 3 G:5 W	WS: 3 G:5 NW	WS: 4 G:4 NNW	WS: 4 G:4 NNW	WS: 5 G:5 NNW	WS: 6 G:5 NNW	WS: 6 G:5 NNW	WS: 4 G:4 S	WS: 3 G:4 SSE	WS: 2 G:3 SSE	WS: 4 G:4 SE	WS: 4 G:5 SE	WS: 9 G:9 SSE	WS: 10 G:11 SSE	WS: 7 G:9 SSE	WS: 6 G:8 E	WS: 5 G:7 E	WS: 4 G:6 ESE	WS: 4 G:5 ESE	WS: 4 G:5 NNW	WS: 4 G:5 NNW	WS: 4 G:5 NNW	WS: 5 G:6 NNW	WS: 6 G:7 NNW	WS: 6 G:7 NNW	WS: 7 G:8 NNW	WS: 8 G:9 NNW	WS: 8 G:9 NNW	WS: 9 G:10 NNW	WS: 9 G:10 NNW	WS: 10 G:11 NNW	WS: 10 G:11 NNW	WS: 10 G:12 NE	WS: 10 G:12 NE		
Houston Pilots A - 1 & 2 Bravo	WS: 4 G:6 S	WS: 5 G:6 SSW	WS: 4 G:5 SSW	WS: 3 G:3 SW	WS: 3 G:3 NW	WS: 4 G:4 NNW	WS: 6 G:6 SSW	WS: 6 G:6 S	WS: 3 G:5 SSW	WS: 3 G:4 S	WS: 2 G:3 SW	WS: 2 G:3 S	WS: 4 G:4 S	WS: 10 G:10 S	WS: 11 G:11 SSE	WS: 7 G:9 SSE	WS: 6 G:8 SE	WS: 5 G:7 E	WS: 4 G:6 E	WS: 4 G:6 E	WS: 4 G:6 NNW	WS: 4 G:5 NNW	WS: 4 G:5 NNW	WS: 5 G:6 NNW	WS: 6 G:7 NNW	WS: 6 G:7 NNW	WS: 7 G:8 NNW	WS: 8 G:9 NNW	WS: 9 G:10 NNW	WS: 9 G:10 NNW	WS: 10 G:11 NNW	WS: 10 G:11 NNW	WS: 10 G:12 NE	WS: 10 G:12 NE	WS: 11 G:12 NE	WS: 11 G:12 NE	

See slides below for official thoughts on winds.

Forecast Discussion

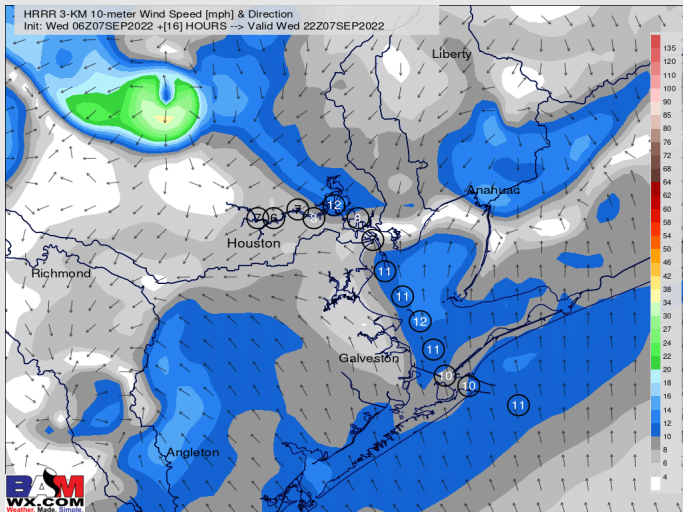
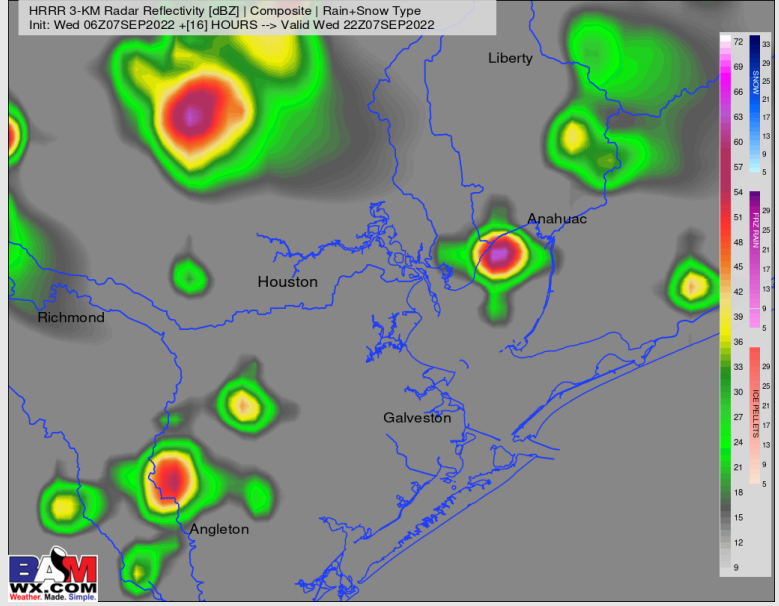
Precip: Anticipating a 20% chance for isolated showers/storms through 11 AM (coverage does not look impressive). Best chance for precip will be for the boarding station and points south. From 4 – 10 PM, all stations hold a 30-40% threat for a few isolated showers and thunderstorms. With any thunderstorms, lightning and locally heavy downpours will be possible.

Wind: Southerly wind of 3-8 MPH turns Northerly near daybreak. Beginning around 12PM winds will be from the NE around 5 – 10 MPH. Winds ~2 PM will shift back from the south at 8-13 MPH with a few gusts higher possible under precip.

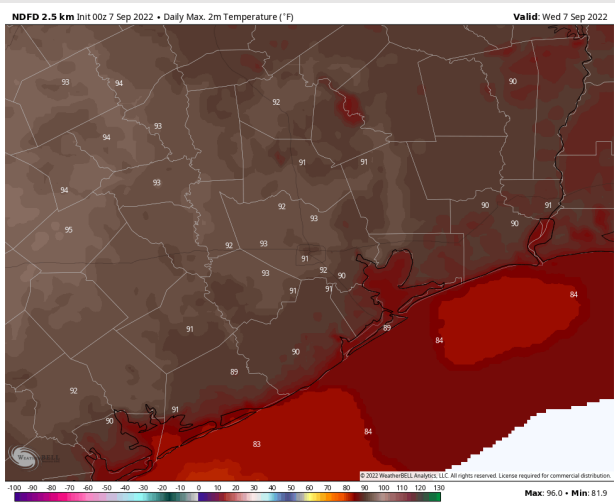
Temps: High temps in the mid 80s F near the boarding station and low 90s F at all other stations.

Visibility: Not anticipating any fog concerns at this time.

Precip Forecast: 5 PM CT



Wind Speed
3 PM CT



High Temps
Today

Houston Pilots: Thu. 9/8/2022

Forecast Discussion

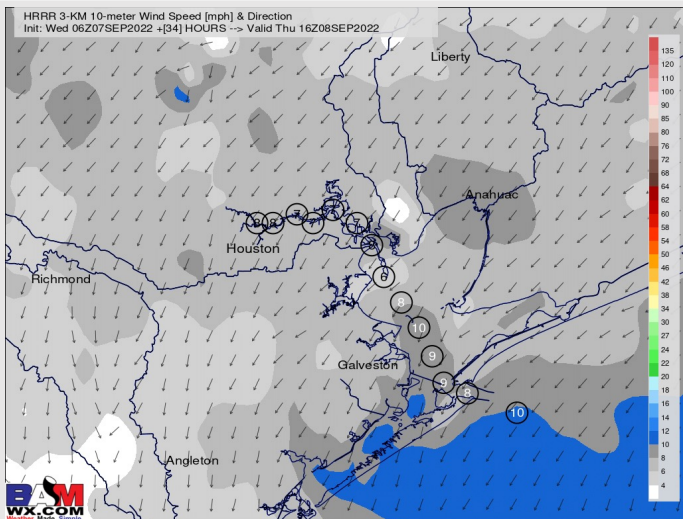
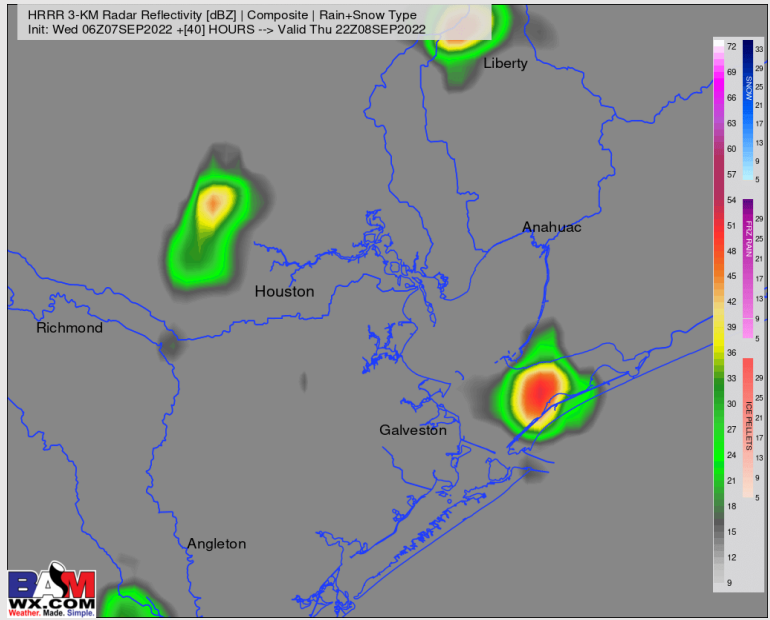
Precip: Eyeing 10-20% chance for precip near the boarding station during the AM on Thursday, however most stations stay dry . After 2PM, chances for precip increase to 30-40% for all stations for the rest of the evening as a round of scattered showers and storms moves in from the North.

Wind: Winds much of the day Thursday will be out of the N/NE at 8-13 MPH sustained. Eyeing late afternoon ~4 PM for winds to shift out of the south.

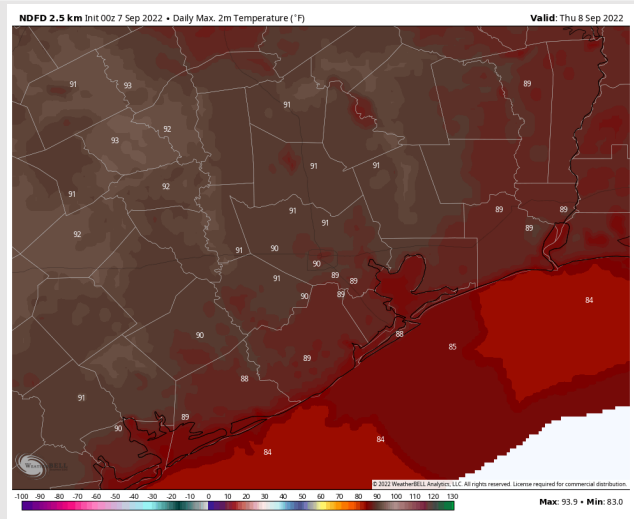
Temps: High temperatures in the mid 80s near the boarding station and near 90s F at all other stations.

Visibility: Not anticipating any fog concerns at this time.

Precip Forecast: 5 PM CT



Wind Speed
11 AM CT



High Temps
Thursday

Houston Pilots: Fri. 9/9/2022



Forecast Discussion

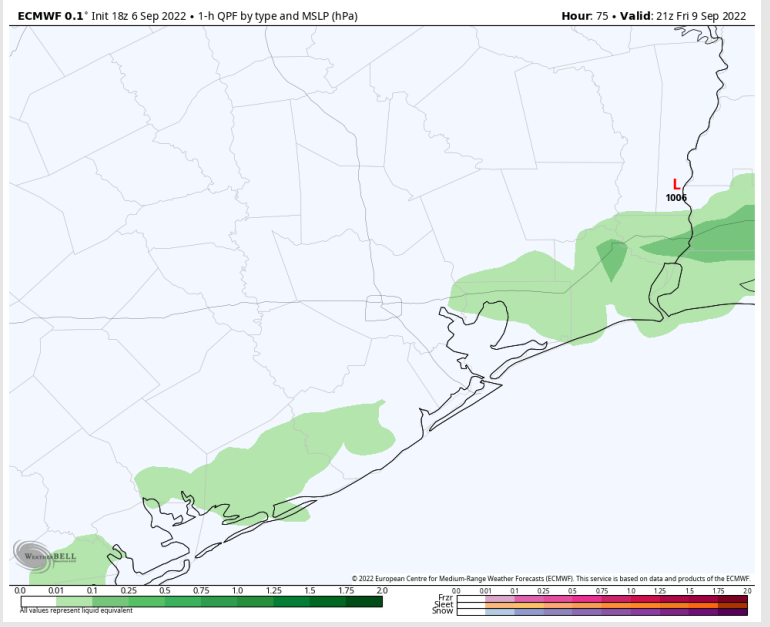
Precip: Favoring a 10-20% chance for scattered showers and thunderstorms Friday AM offshore near the boarding station until 12 PM. From 12 PM – 3PM favoring a 20-30% chance for an isolated shower/thunderstorm for all stations. After 3PM rain chances increase to 30% for all stations until 6PM. After 6 PM, favoring dry conditions for all stations for the rest of the evening.

Wind: Winds variable Friday at at for all locations. Winds at 7-10 MPH near the boarding station. Winds at 3-7 MPH at all other stations.

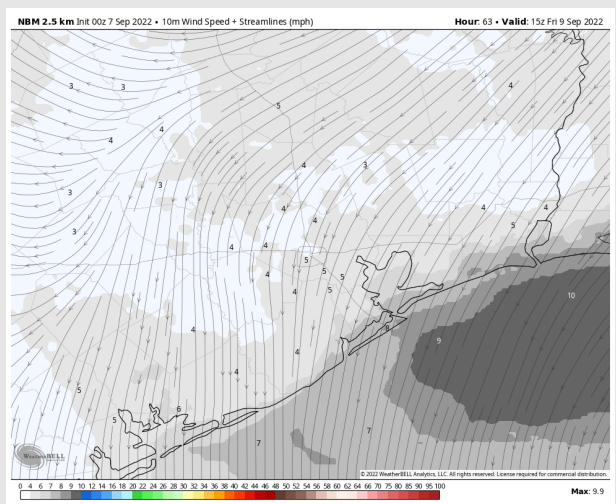
Temps: High temps Friday in the mid 80s F near the boarding station and near 90s F at all other stations

Visibility: Not anticipating fog concerns for Friday for the stations.

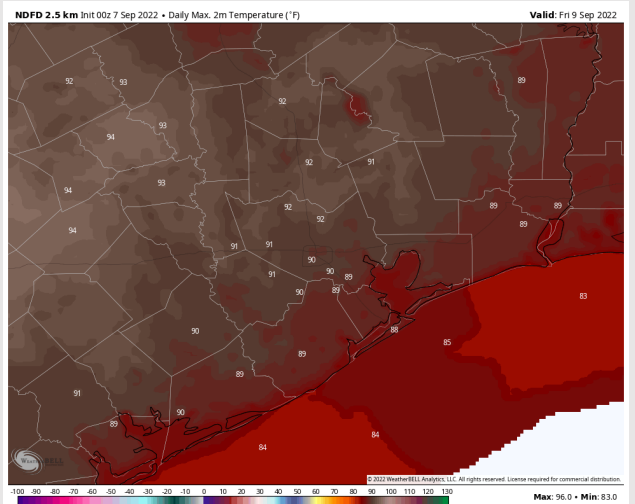
Precip Forecast: 4 PM CT



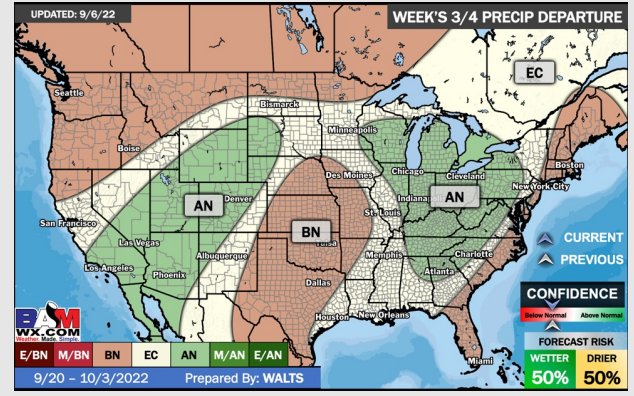
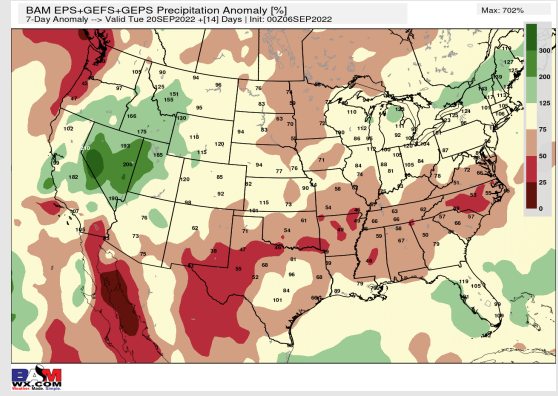
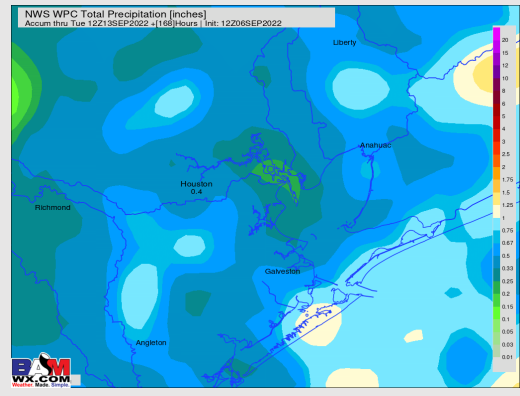
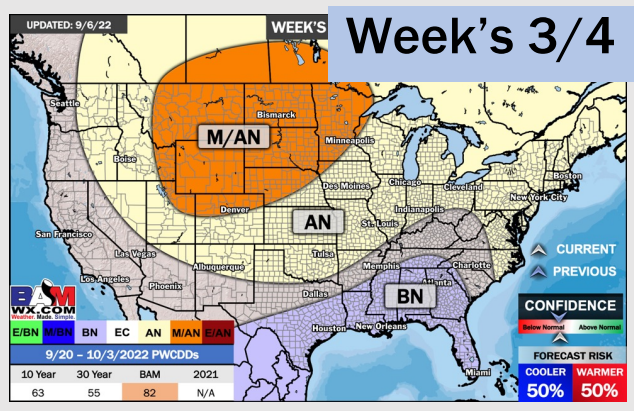
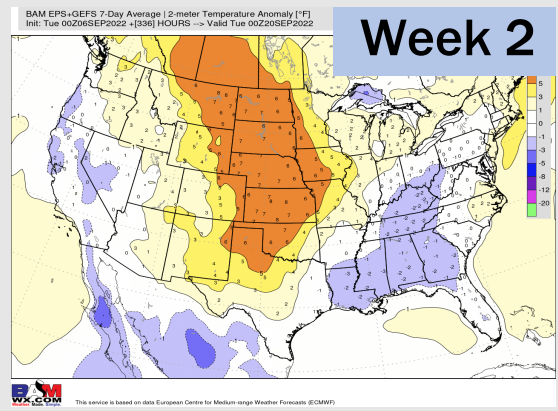
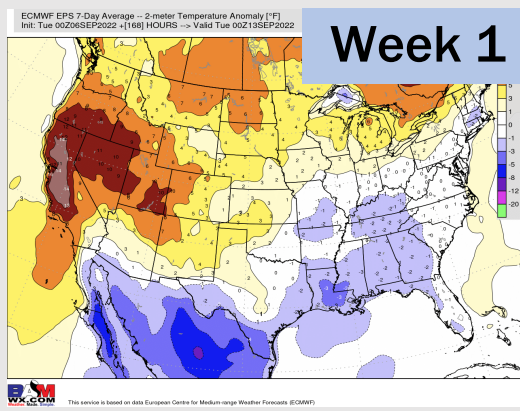
Wind Speed
10 AM CT



High Temps
Friday



Houston Pilots: 9/7/22



- Temperatures expected to be below normal for the next week. Daily rainfall chances continue as precip move through the area the next couple days.
- Week 2 likely features below normal temperatures and above normal precipitation.
- The weeks ¾ timeframe into mid September looks to feature below normal temperatures and above normal risks for precip.