

Houston Pilots Forecast Package



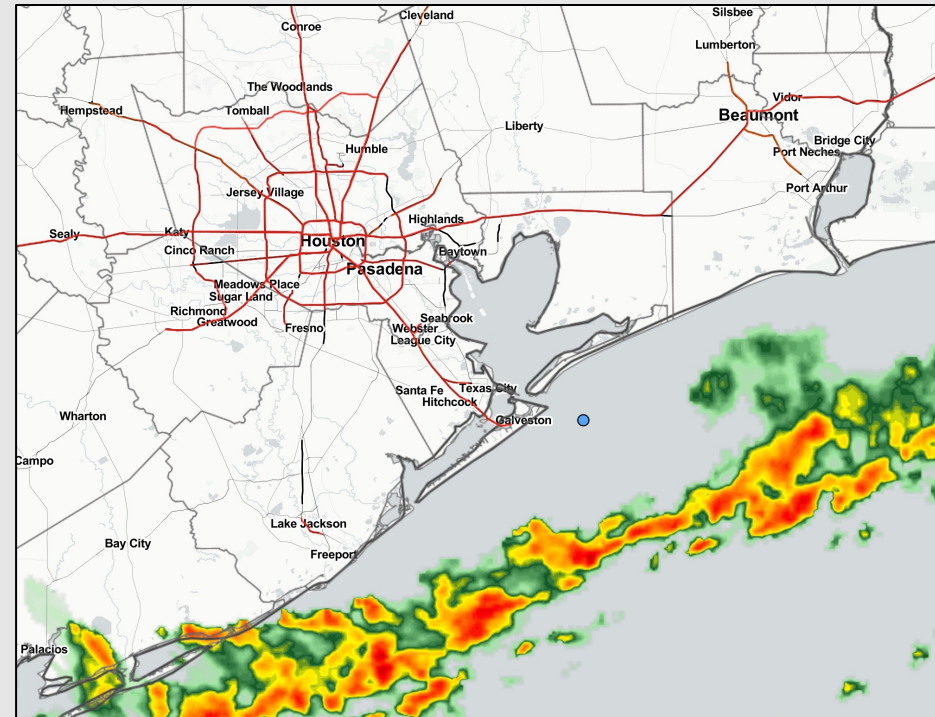
Updated: 5:00 AM CT

Sunday, September 4, 2022

Forecaster: Vince Bryan

Weather Headlines

- Daily rain chances likely continue out through at least Thursday, when precip opportunities will slowly lower.
- No tropical activity is favored in the Gulf over the next 7-10 days with Danielle and Earl remaining in the Atlantic.
- Winds will continue to remain calmer with any elevated winds likely coming from pockets of stronger precipitation.



Radar/ NWS Alerts: 5:00 AM CT



As always, please do not hesitate to reach out to us with any forecast questions via the chat option on the Weather Porthole or our on-call number, **(317)-560-8122** press 1 for forecast questions.

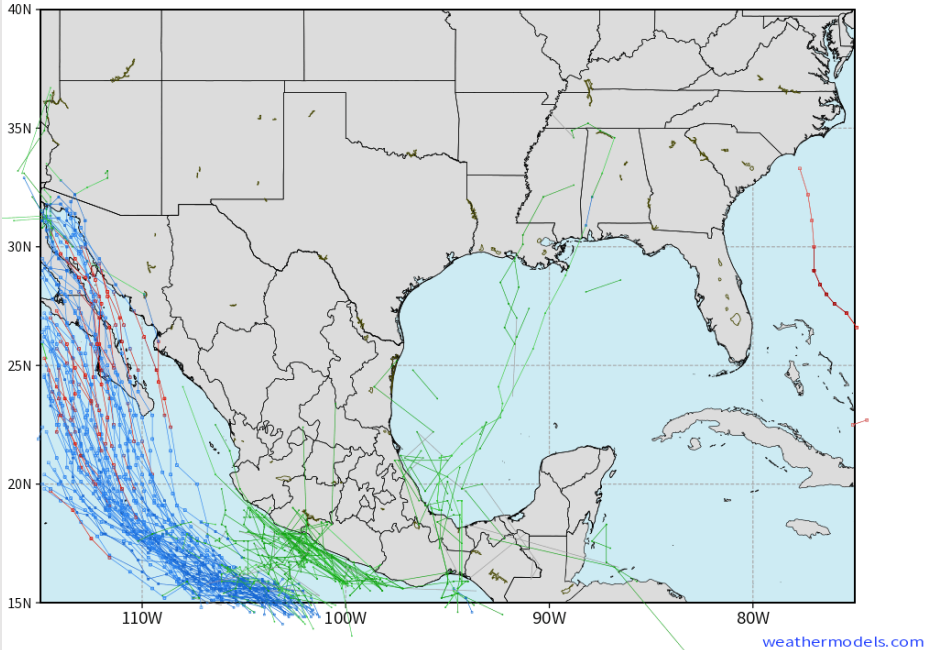
Houston Pilots Extended Range Tropical Report



European Data Tracks Next 10 Days

ECMWF GULF EPS Cyclone Locations --> Next [10-days]
INIT: 12Z03SEP2022 --> UNTIL 12Z13SEP2022

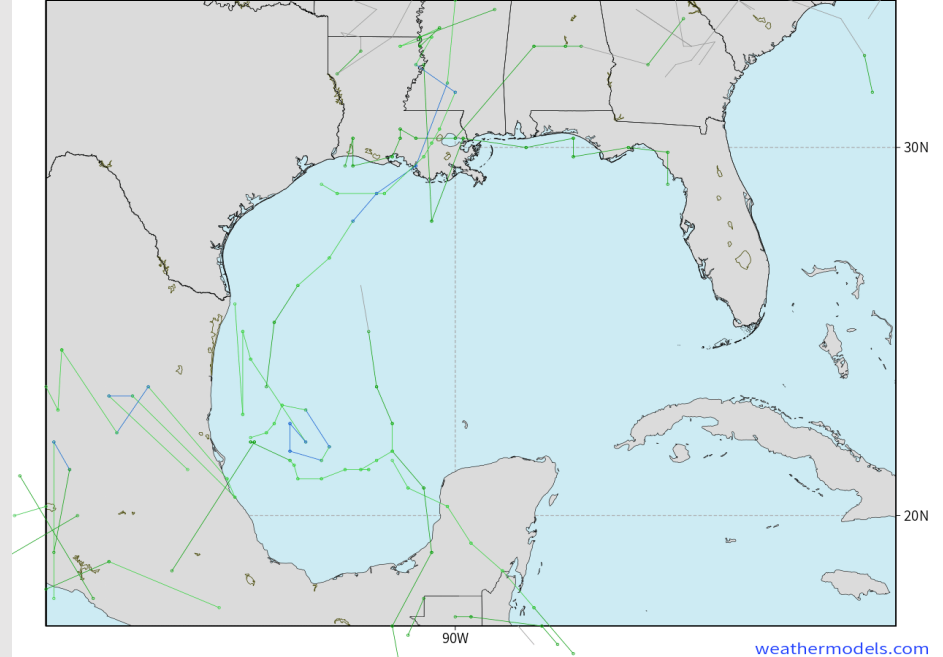
o-o ENSEMBLE MEAN
o-o 1000 - 1010 hPa
o-o 980 - 999 hPa
o-o 960 - 979 hPa
o-o 950 - 959 hPa
o-o < 950 hPa



American Data Tracks Next 10 Days

NCEP GEFSv12 Ensemble Cyclones [0.25°] +240 Hours
INIT: 12Z03SEP2022 --> UNTIL 12Z13SEP2022

o-o > 1010 hPa
o-o 1000 - 1010 hPa
o-o 980 - 999 hPa
o-o 960 - 979 hPa
o-o 950 - 959 hPa
o-o < 950 hPa



No tropical threats over the next 7-10 days in the Gulf Of Mexico. Any tropical activity will stay confined to the Atlantic.



Houston Pilots Visibility Report



Time	09-04-2022 Sun 3am	09-04-2022 Sun 4am	09-04-2022 Sun 5am	09-04-2022 Sun 6am	09-04-2022 Sun 7am	09-04-2022 Sun 8am	09-04-2022 Sun 9am	09-04-2022 Sun 10am	09-04-2022 Sun 11am	09-04-2022 Sun 12pm	09-04-2022 Sun 1pm	09-04-2022 Sun 2pm	09-04-2022 Sun 3pm	09-04-2022 Sun 4pm	09-04-2022 Sun 5pm	09-04-2022 Sun 6pm	09-04-2022 Sun 7pm	09-04-2022 Sun 8pm	09-04-2022 Sun 9pm	09-04-2022 Sun 10pm	09-04-2022 Sun 11pm	09-05-2022 Mon 12am	09-05-2022 Mon 1am	09-05-2022 Mon 2am	09-05-2022 Mon 3am	09-05-2022 Mon 4am	09-05-2022 Mon 5am	09-05-2022 Mon 6am	09-05-2022 Mon 7am	09-05-2022 Mon 8am	09-05-2022 Mon 9am	09-05-2022 Mon 10am	09-05-2022 Mon 11am	09-05-2022 Mon 12pm	09-05-2022 Mon 1pm	09-05-2022 Mon 2pm		
Houston Pilots N - 610 Bridge	9.442	8.439	9.038	10.000	7.924	9.316	7.924	10.000	10.000	10.000	10.000	10.000	10.000	10.000	10.000	10.000	10.000	10.000	10.000	10.000	10.000	10.000	10.000	10.000	10.000	10.000	10.000	10.000	10.000	10.000	10.000	10.000	10.000	10.000	10.000	10.000	10.000	
Houston Pilots M - Kinder 1	9.038	8.439	9.038	10.000	7.924	10.000	7.924	10.000	10.000	10.000	10.000	10.000	10.000	10.000	10.000	10.000	10.000	10.000	10.000	10.000	10.000	10.000	10.000	10.000	10.000	10.000	10.000	10.000	10.000	10.000	10.000	10.000	10.000	10.000	10.000	10.000	10.000	
Houston Pilots L - Greens Bayou	9.465	8.174	9.038	10.000	7.924	10.000	7.924	10.000	10.000	10.000	10.000	10.000	10.000	10.000	10.000	10.000	10.000	10.000	10.000	10.000	10.000	10.000	10.000	10.000	10.000	10.000	10.000	10.000	10.000	8.011	8.487	10.000	10.000	10.000	10.000	10.000		
Houston Pilots K - Shell Crude	10.000	10.000	9.618	10.000	10.000	10.000	7.924	10.000	10.000	10.000	10.000	10.000	10.000	10.000	10.000	10.000	10.000	10.000	10.000	10.000	10.000	10.000	10.000	10.000	10.000	10.000	10.000	10.000	10.000	10.000	10.000	10.000	10.000	10.000	10.000	10.000	10.000	
Houston Pilots J - Lynchburg Ferries	10.000	10.000	9.618	10.000	10.000	10.000	7.763	10.000	10.000	10.000	10.000	10.000	10.000	10.000	10.000	10.000	10.000	10.000	10.000	10.000	10.000	10.000	10.000	10.000	10.000	10.000	9.705	10.000	8.988	8.988	10.000	10.000	10.000	10.000	10.000	10.000		
Houston Pilots I - Exxon 3	10.000	10.000	10.000	10.000	10.000	10.000	7.924	9.038	10.000	10.000	10.000	10.000	10.000	10.000	10.000	10.000	10.000	10.000	10.000	10.000	10.000	10.000	10.000	10.000	10.000	10.000	10.000	10.000	10.000	10.000	9.862	9.862	10.000	10.000	10.000	10.000	10.000	
Houston Pilots H - Morgans Point	10.000	10.000	10.000	10.000	10.000	10.000	7.924	9.038	9.720	10.000	9.949	10.000	10.000	10.000	10.000	10.000	10.000	10.000	10.000	10.000	10.000	10.000	10.000	10.000	10.000	10.000	10.000	10.000	10.000	10.000	9.862	9.862	10.000	10.000	10.000	10.000	10.000	
Houston Pilots G - 75/76	10.000	10.000	10.000	10.000	10.000	10.000	10.000	9.038	9.038	10.000	9.038	10.000	10.000	10.000	10.000	10.000	10.000	10.000	10.000	10.000	10.000	10.000	10.000	10.000	10.000	10.000	10.000	10.000	10.000	10.000	10.000	10.000	10.000	10.000	10.000	10.000	10.000	
Houston Pilots F - 63/64	10.000	10.000	10.000	10.000	10.000	10.000	10.000	9.038	7.924	10.000	8.652	9.337	10.000	10.000	10.000	10.000	10.000	10.000	10.000	10.000	10.000	10.000	10.000	10.000	10.000	10.000	10.000	10.000	10.000	10.000	10.000	10.000	10.000	10.000	10.000	10.000	10.000	
Houston Pilots E - 51/52	10.000	10.000	10.000	10.000	10.000	10.000	10.000	9.038	6.890	9.089	7.635	8.999	10.000	10.000	10.000	10.000	10.000	10.000	10.000	10.000	10.000	10.000	10.000	10.000	10.000	10.000	10.000	10.000	10.000	10.000	10.000	10.000	10.000	10.000	10.000	10.000	10.000	
Houston Pilots D - 37/38	10.000	10.000	10.000	10.000	10.000	10.000	10.000	9.370	6.890	7.924	6.890	8.555	10.000	10.000	10.000	10.000	10.000	10.000	10.000	10.000	10.000	10.000	10.000	10.000	10.000	10.000	10.000	10.000	10.000	10.000	10.000	10.000	10.000	10.000	10.000	10.000	10.000	
Houston Pilots C - 25/26	10.000	10.000	10.000	10.000	10.000	10.000	10.000	10.000	6.938	7.836	6.890	6.931	10.000	10.000	10.000	10.000	10.000	10.000	10.000	10.000	10.000	10.000	10.000	10.000	10.000	10.000	10.000	10.000	10.000	10.000	10.000	10.000	10.000	10.000	10.000	10.000	10.000	
Houston Pilots B - 11/12	10.000	10.000	10.000	10.000	10.000	10.000	10.000	10.000	6.938	6.890	5.977	6.931	9.082	10.000	10.000	10.000	10.000	10.000	10.000	10.000	10.000	10.000	10.000	10.000	10.000	10.000	10.000	10.000	10.000	10.000	10.000	10.000	10.000	10.000	10.000	10.000	10.000	
Houston Pilots A - 1 & 2 Bravo	10.000	10.000	10.000	10.000	10.000	10.000	10.000	10.000	6.890	4.902	3.948	4.942	6.890	6.890	8.999	10.000	10.000	9.822	9.822	10.000	10.000	10.000	10.000	10.000	10.000	10.000	10.000	10.000	10.000	10.000	10.000	10.000	10.000	10.000	9.822	9.822	10.000	10.000

Houston Pilots Wind Report



Example

Sustained wind 13 MPH

Gusts 18 MPH

Wind from the N

WS: 13

G: 18

N

Time	09-04-2022 Sun 3am	09-04-2022 Sun 4am	09-04-2022 Sun 5am	09-04-2022 Sun 6am	09-04-2022 Sun 7am	09-04-2022 Sun 8am	09-04-2022 Sun 9am	09-04-2022 Sun 10am	09-04-2022 Sun 11am	09-04-2022 Sun 12pm	09-04-2022 Sun 1pm	09-04-2022 Sun 2pm	09-04-2022 Sun 3pm	09-04-2022 Sun 4pm	09-04-2022 Sun 5pm	09-04-2022 Sun 6pm	09-04-2022 Sun 7pm	09-04-2022 Sun 8pm	09-04-2022 Sun 9pm	09-04-2022 Sun 10pm	09-04-2022 Sun 11pm	09-05-2022 Mon 12am	09-05-2022 Mon 1am	09-05-2022 Mon 2am	09-05-2022 Mon 3am	09-05-2022 Mon 4am	09-05-2022 Mon 5am	09-05-2022 Mon 6am	09-05-2022 Mon 7am	09-05-2022 Mon 8am	09-05-2022 Mon 9am	09-05-2022 Mon 10am	09-05-2022 Mon 11am	09-05-2022 Mon 12pm	09-05-2022 Mon 1pm	09-05-2022 Mon 2pm
Houston Pilots N - 610 Bridge	WS: 1 G:4 ENE	WS: 0 G:2 S	WS: 0 G:2 NW	WS: 3 G:6 NW	WS: 2 G:8 NW	WS: 3 G:8 NNW	WS: 3 G:8 NNW	WS: 3 G:9 NNW	WS: 0 G:4 W	WS: 1 G:4 NW	WS: 1 G:3 NE	WS: 1 G:4 ESE	WS: 3 G:5 ESE	WS: 6 G:8 SE	WS: 7 G:9 SSE	WS: 5 G:10 S	WS: 6 G:9 SSW	WS: 5 G:7 SSW	WS: 4 G:6 SSW	WS: 3 G:5 SSW	WS: 3 G:5 SSW	WS: 3 G:5 SW	WS: 3 G:5 SW	WS: 3 G:5 SW	WS: 2 G:4 SW	WS: 2 G:4 SW	WS: 2 G:4 SW	WS: 2 G:4 SW	WS: 3 G:4 SW	WS: 2 G:4 SW	WS: 3 G:5 SW	WS: 3 G:4 SW	WS: 4 G:6 S	WS: 4 G:7 S	WS: 4 G:9 S	WS: 6 G:10 SSE
Houston Pilots M - Kinder 1	WS: 1 G:4 E	WS: 0 G:2 SE	WS: 0 G:2 NW	WS: 3 G:6 NW	WS: 2 G:8 NW	WS: 3 G:8 NNW	WS: 3 G:8 NNW	WS: 2 G:9 NNW	WS: 0 G:4 WSW	WS: 1 G:4 WNW	WS: 1 G:3 NE	WS: 1 G:4 ESE	WS: 3 G:5 ESE	WS: 7 G:8 SE	WS: 7 G:9 SSE	WS: 5 G:10 S	WS: 6 G:9 SSW	WS: 4 G:7 SSW	WS: 3 G:6 SSW	WS: 3 G:5 SSW	WS: 3 G:5 SW	WS: 3 G:5 SW	WS: 3 G:5 SW	WS: 3 G:5 SW	WS: 2 G:4 SW	WS: 2 G:4 SW	WS: 2 G:4 SW	WS: 2 G:4 SW	WS: 3 G:3 SW	WS: 3 G:4 SW	WS: 3 G:5 SW	WS: 3 G:4 SW	WS: 4 G:6 S	WS: 4 G:7 S	WS: 5 G:9 SSE	WS: 5 G:10 SSE
Houston Pilots L - Greens Bayou	WS: 1 G:2 SSE	WS: 0 G:2 SE	WS: 1 G:1 W	WS: 3 G:5 NW	WS: 3 G:7 NW	WS: 3 G:8 NNW	WS: 3 G:8 NNW	WS: 3 G:9 NNW	WS: 0 G:4 S	WS: 0 G:4 WNW	WS: 1 G:3 NE	WS: 1 G:4 ESE	WS: 3 G:5 SE	WS: 7 G:9 SE	WS: 7 G:9 SSE	WS: 5 G:10 S	WS: 6 G:9 SSW	WS: 4 G:6 SSW	WS: 4 G:6 SSW	WS: 3 G:5 SSW	WS: 3 G:5 SW	WS: 3 G:5 SW	WS: 3 G:5 SW	WS: 2 G:4 SW	WS: 2 G:3 SW	WS: 2 G:3 SW	WS: 2 G:4 SW	WS: 2 G:4 SW	WS: 2 G:4 SW	WS: 3 G:5 W	WS: 3 G:5 W	WS: 3 G:5 W	WS: 4 G:7 S	WS: 4 G:7 S	WS: 5 G:9 SSE	WS: 5 G:10 SSE
Houston Pilots K - Shell Crote	WS: 1 G:2 SW	WS: 0 G:1 SSW	WS: 1 G:1 WSW	WS: 3 G:5 WNW	WS: 3 G:7 NW	WS: 4 G:8 NNW	WS: 4 G:8 NNW	WS: 3 G:9 NNW	WS: 0 G:5 S	WS: 0 G:4 NW	WS: 1 G:3 ENE	WS: 1 G:3 ESE	WS: 2 G:4 SE	WS: 4 G:5 SSE	WS: 7 G:9 SSE	WS: 6 G:10 S	WS: 6 G:9 SSW	WS: 4 G:6 SSW	WS: 3 G:5 SSW	WS: 3 G:5 SSW	WS: 3 G:5 SW	WS: 3 G:5 SW	WS: 3 G:5 SW	WS: 3 G:5 SW	WS: 2 G:4 SW	WS: 2 G:4 SW	WS: 2 G:4 SW	WS: 2 G:4 SW	WS: 2 G:4 SW	WS: 3 G:5 W	WS: 3 G:5 W	WS: 4 G:6 S	WS: 5 G:7 S	WS: 5 G:9 SSE	WS: 6 G:10 SSE	
Houston Pilots J - Lynchburg Ferries	WS: 1 G:2 W	WS: 0 G:1 SSW	WS: 0 G:1 WSW	WS: 3 G:5 NW	WS: 3 G:7 NW	WS: 4 G:8 NNW	WS: 4 G:8 NNW	WS: 4 G:9 NNW	WS: 1 G:5 WSW	WS: 0 G:4 WNW	WS: 1 G:3 NE	WS: 1 G:4 ESE	WS: 2 G:3 SE	WS: 4 G:6 SSE	WS: 7 G:9 SSE	WS: 7 G:9 SSW	WS: 6 G:10 S	WS: 6 G:9 SSW	WS: 4 G:7 SSW	WS: 4 G:6 SSW	WS: 3 G:5 SSW	WS: 3 G:5 SW	WS: 3 G:5 SW	WS: 3 G:5 SW	WS: 2 G:4 SW	WS: 2 G:3 SW	WS: 2 G:3 SW	WS: 3 G:4 SW	WS: 3 G:4 SW	WS: 3 G:5 W	WS: 4 G:6 W	WS: 4 G:7 S	WS: 5 G:8 S	WS: 5 G:9 SSE	WS: 6 G:10 SSE	
Houston Pilots I - Exxon 3	WS: 1 G:2 W	WS: 0 G:1 SSW	WS: 0 G:1 WSW	WS: 4 G:6 WNW	WS: 3 G:6 WNW	WS: 5 G:8 NW	WS: 5 G:10 NNW	WS: 4 G:9 NNW	WS: 1 G:6 NW	WS: 1 G:5 WNW	WS: 1 G:4 ENE	WS: 1 G:3 ESE	WS: 2 G:4 SSE	WS: 6 G:7 SSE	WS: 7 G:9 SSE	WS: 6 G:9 S	WS: 6 G:9 SSW	WS: 6 G:9 SSW	WS: 4 G:6 SW	WS: 4 G:6 SW	WS: 3 G:5 SW	WS: 3 G:5 SW	WS: 3 G:5 SW	WS: 3 G:5 SW	WS: 3 G:5 SW	WS: 3 G:5 SW	WS: 3 G:4 W	WS: 3 G:4 W	WS: 3 G:5 W	WS: 4 G:6 W	WS: 4 G:7 S	WS: 5 G:8 S	WS: 5 G:9 SSE	WS: 6 G:10 SSE		
Houston Pilots H - Morgans Point	WS: 1 G:3 W	WS: 2 G:2 SW	WS: 1 G:2 WNW	WS: 5 G:6 WNW	WS: 4 G:6 WNW	WS: 5 G:8 NW	WS: 5 G:10 NNW	WS: 5 G:10 NNW	WS: 2 G:6 NW	WS: 2 G:5 NNW	WS: 2 G:4 ENE	WS: 2 G:4 ESE	WS: 3 G:4 SSE	WS: 7 G:7 SSE	WS: 7 G:9 SSE	WS: 6 G:10 S	WS: 6 G:9 SSW	WS: 5 G:7 SW	WS: 4 G:6 SW	WS: 4 G:6 SW	WS: 4 G:6 SW	WS: 4 G:6 SW	WS: 4 G:6 SW	WS: 4 G:6 SW	WS: 4 G:6 W	WS: 4 G:6 W	WS: 4 G:6 W	WS: 4 G:6 W	WS: 4 G:6 W	WS: 4 G:6 W	WS: 4 G:6 W	WS: 4 G:6 W	WS: 4 G:6 W	WS: 5 G:7 S	WS: 5 G:8 SSE	WS: 6 G:9 SSE
Houston Pilots G - 75/76	WS: 2 G:4 WNW	WS: 2 G:3 WNW	WS: 3 G:3 WNW	WS: 5 G:6 WNW	WS: 7 G:8 WNW	WS: 7 G:8 NW	WS: 7 G:10 NNW	WS: 7 G:9 NNW	WS: 4 G:6 NW	WS: 2 G:4 NE	WS: 2 G:4 ESE	WS: 6 G:7 SSE	WS: 6 G:9 SSE	WS: 10 G:10 S	WS: 10 G:10 S	WS: 6 G:9 SSW	WS: 6 G:8 SSW	WS: 5 G:7 SSW	WS: 5 G:7 SSW	WS: 5 G:7 SSW	WS: 5 G:7 SSW	WS: 5 G:7 SSW	WS: 5 G:7 SSW	WS: 5 G:7 SSW	WS: 5 G:7 W	WS: 5 G:7 W	WS: 5 G:7 W	WS: 5 G:7 W	WS: 5 G:7 W	WS: 5 G:7 W	WS: 5 G:7 W	WS: 5 G:7 W	WS: 5 G:7 W	WS: 5 G:7 W	WS: 5 G:7 W	WS: 5 G:7 W
Houston Pilots F - 63/64	WS: 2 G:4 WNW	WS: 3 G:5 WNW	WS: 4 G:5 WNW	WS: 5 G:6 WNW	WS: 8 G:8 WNW	WS: 8 G:8 NW	WS: 11 G:11 NNW	WS: 8 G:11 NNW	WS: 7 G:11 NNW	WS: 5 G:11 NNW	WS: 2 G:11 NNE	WS: 3 G:4 ESE	WS: 6 G:5 SSE	WS: 10 G:10 S	WS: 11 G:11 SSW	WS: 7 G:9 SSW	WS: 6 G:8 SSW	WS: 6 G:8 SSW	WS: 5 G:7 SSW	WS: 5 G:7 SSW	WS: 5 G:7 SSW	WS: 5 G:7 SSW	WS: 5 G:7 SSW	WS: 5 G:7 SSW	WS: 5 G:7 W	WS: 5 G:7 W	WS: 5 G:7 W	WS: 5 G:7 W	WS: 5 G:7 W	WS: 5 G:7 W	WS: 5 G:7 W	WS: 5 G:7 W	WS: 5 G:7 W	WS: 5 G:7 W	WS: 5 G:7 W	WS: 5 G:7 W
Houston Pilots E - 51/52	WS: 3 G:4 WNW	WS: 4 G:5 WNW	WS: 4 G:6 WNW	WS: 5 G:5 WNW	WS: 8 G:9 WNW	WS: 8 G:9 NW	WS: 12 G:12 NNW	WS: 8 G:12 NNW	WS: 9 G:12 NNW	WS: 5 G:12 NNW	WS: 3 G:3 E	WS: 3 G:3 E	WS: 6 G:7 SE	WS: 6 G:10 SSE	WS: 12 G:12 SSW	WS: 7 G:9 SSW	WS: 6 G:8 SSW	WS: 6 G:8 SSW	WS: 5 G:7 SSW	WS: 5 G:7 SSW	WS: 5 G:7 SSW	WS: 5 G:7 SSW	WS: 5 G:7 SSW	WS: 5 G:7 W	WS: 5 G:7 W	WS: 5 G:7 W	WS: 5 G:7 W	WS: 5 G:7 W	WS: 5 G:7 W	WS: 5 G:7 W	WS: 5 G:7 W	WS: 5 G:7 W	WS: 5 G:7 W	WS: 5 G:7 W	WS: 5 G:7 W	WS: 5 G:7 W
Houston Pilots D - 37/38	WS: 4 G:5 WNW	WS: 5 G:5 WNW	WS: 5 G:6 WNW	WS: 4 G:5 WNW	WS: 7 G:8 WNW	WS: 9 G:9 NW	WS: 11 G:11 NNW	WS: 8 G:11 NNW	WS: 9 G:11 NNW	WS: 6 G:11 NNW	WS: 3 G:3 WSW	WS: 3 G:3 E	WS: 6 G:7 SE	WS: 9 G:10 SSE	WS: 12 G:12 SSW	WS: 7 G:9 SSW	WS: 7 G:8 SSW	WS: 6 G:7 SSW	WS: 5 G:7 SSW	WS: 5 G:7 SSW	WS: 5 G:7 SSW	WS: 5 G:7 SSW	WS: 5 G:7 SSW	WS: 5 G:7 W	WS: 5 G:7 W	WS: 5 G:7 W	WS: 5 G:7 W	WS: 5 G:7 W	WS: 5 G:7 W	WS: 5 G:7 W	WS: 5 G:7 W	WS: 5 G:7 W	WS: 5 G:7 W	WS: 5 G:7 W	WS: 5 G:7 W	WS: 5 G:7 W
Houston Pilots C - 25/26	WS: 6 G:7 NW	WS: 5 G:5 NW	WS: 5 G:6 NW	WS: 4 G:5 W	WS: 6 G:6 WNW	WS: 9 G:10 NW	WS: 11 G:11 NNW	WS: 8 G:11 NNW	WS: 9 G:11 NNW	WS: 8 G:11 NNW	WS: 6 G:11 NNW	WS: 3 G:3 ESE	WS: 6 G:6 SE	WS: 9 G:9 S	WS: 11 G:11 SSW	WS: 6 G:9 SSW	WS: 6 G:8 SSW	WS: 5 G:7 SSW	WS: 5 G:7 SSW	WS: 5 G:7 SSW	WS: 5 G:7 SSW	WS: 5 G:7 SSW	WS: 5 G:7 W	WS: 5 G:7 W	WS: 5 G:7 W	WS: 5 G:7 W	WS: 5 G:7 W	WS: 5 G:7 W	WS: 5 G:7 W	WS: 5 G:7 W	WS: 5 G:7 W	WS: 5 G:7 W	WS: 5 G:7 W	WS: 5 G:7 W	WS: 5 G:7 W	WS: 5 G:7 W
Houston Pilots B - 11/12	WS: 7 G:9 NW	WS: 4 G:4 NW	WS: 5 G:6 NW	WS: 4 G:5 WNW	WS: 5 G:5 WNW	WS: 8 G:10 NW	WS: 8 G:10 NNW	WS: 8 G:10 NNW	WS: 9 G:10 NNW	WS: 7 G:10 NNW	WS: 2 G:3 ENE	WS: 3 G:4 ESE	WS: 6 G:6 SE	WS: 9 G:9 S	WS: 12 G:12 S	WS: 6 G:9 SSW	WS: 6 G:8 SSW	WS: 5 G:7 SSW	WS: 5 G:7 SSW	WS: 5 G:7 SSW	WS: 5 G:7 SSW	WS: 5 G:7 SSW	WS: 5 G:7 W	WS: 5 G:7 W	WS: 5 G:7 W	WS: 5 G:7 W	WS: 5 G:7 W	WS: 5 G:7 W	WS: 5 G:7 W	WS: 5 G:7 W	WS: 5 G:7 W	WS: 5 G:7 W	WS: 5 G:7 W	WS: 5 G:7 W	WS: 5 G:7 W	WS: 5 G:7 W
Houston Pilots A - 1 & 2 Bravo	WS: 9 G:9 NW	WS: 5 G:5 SSE	WS: 6 G:6 SSW	WS: 3 G:3 WNW	WS: 4 G:4 WNW	WS: 8 G:8 NW	WS: 9 G:9 NNW	WS: 11 G:11 NNW	WS: 8 G:11 NNW	WS: 4 G:4 NNW	WS: 3 G:3 NNW	WS: 4 G:4 ESE	WS: 6 G:6 SE	WS: 13 G:13 SSE	WS: 13 G:13 S	WS: 7 G:9 SSW	WS: 7 G:8 SSW	WS: 6 G:7 SSW	WS: 5 G:7 SSW	WS: 6 G:8 WSW	WS: 6 G:8 WSW	WS: 6 G:8 WSW	WS: 6 G:8 W	WS: 6 G:8 W	WS: 6 G:8 W	WS: 6 G:8 W	WS: 6 G:8 W	WS: 6 G:8 W	WS: 6 G:8 W	WS: 6 G:8 W	WS: 6 G:8 W	WS: 6 G:8 W	WS: 5 G:7 W	WS: 5 G:7 W	WS: 5 G:7 W	WS: 6 G:8 SSE

See slides below for official thoughts on winds.

Houston Pilots: Sun. 9/4/2022



Forecast Discussion

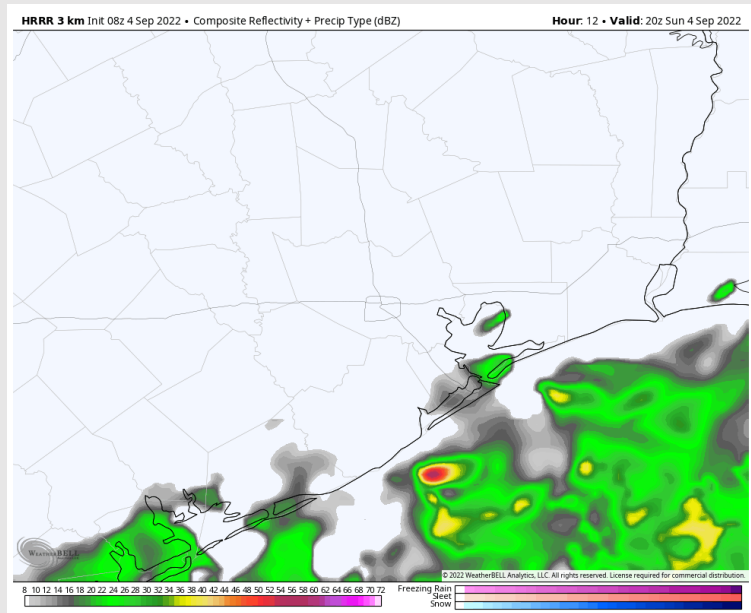
Precip: Anticipating a 20% chance for an isolated shower/storm throughout the AM. By Noon and through the afternoon, coverage will begin to increase in the Gulf (boarding station), while stations closer to the HOU metro area will still have isolated chances. A few thunderstorms will be possible, but more rain showers vs strong thunderstorms are favored. Will favor the most widespread rains to sit along and Southeast of the boarding station.

Wind: Winds start the day out of the N (with some variation at times to the NNW and NNE) at 5-10 MPH that increases to 8-13 MPH after noon. There are some locally higher winds being noted this AM (as of 4:30 AM) as a boundary passes the area. Beyond 3 PM winds shift to out of the SSW at 8-13 MPH before falling to 5-10 MPH for the evening.

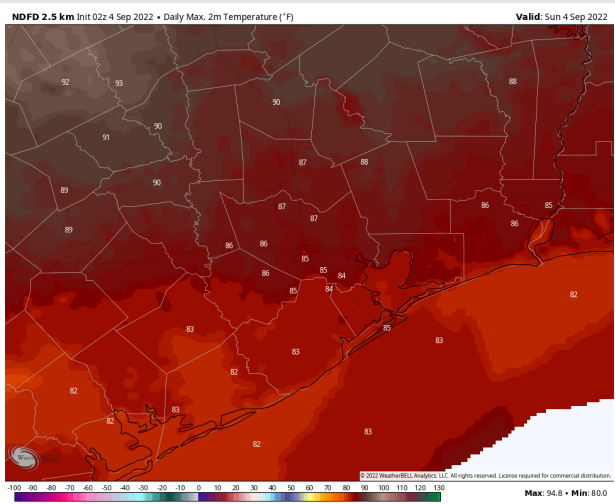
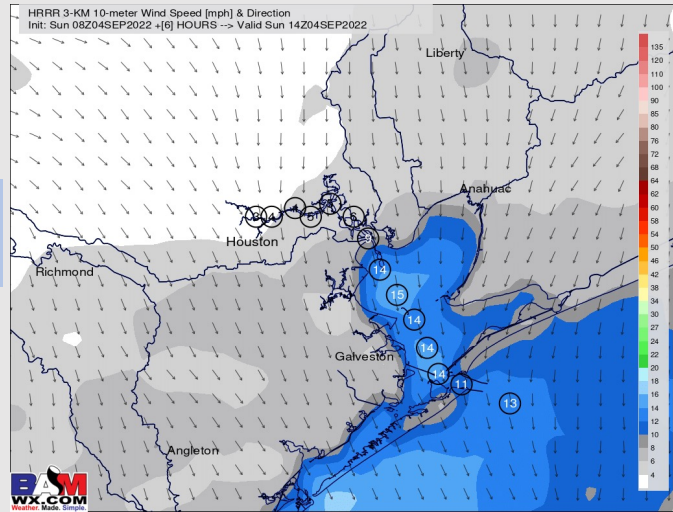
Temps: High temps in the mid 80s F for all stations.

Visibility: Not anticipating any fog concerns at this time.

Precip Forecast: 2 PM CT



Wind Speed
10 AM CT



High Temps
Today

Houston Pilots: Mon. 9/5/2022



Forecast Discussion

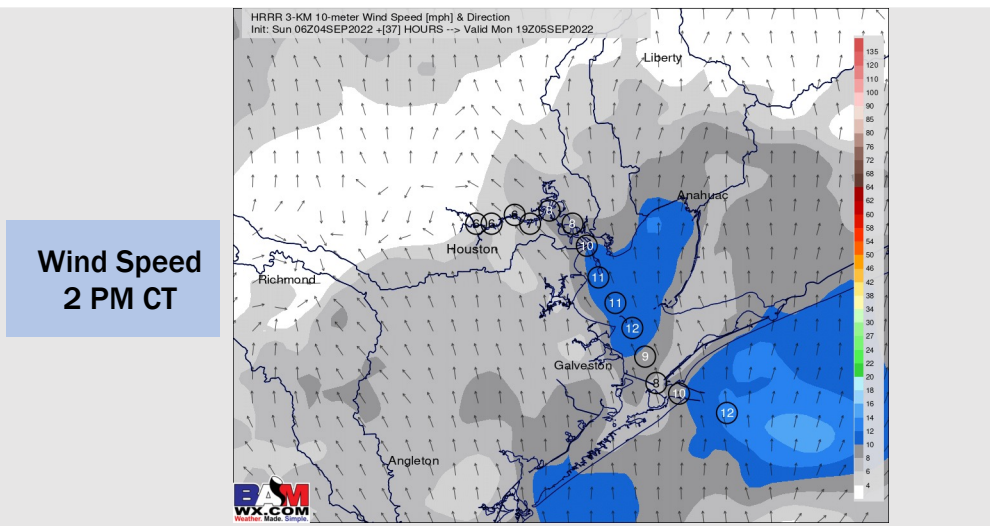
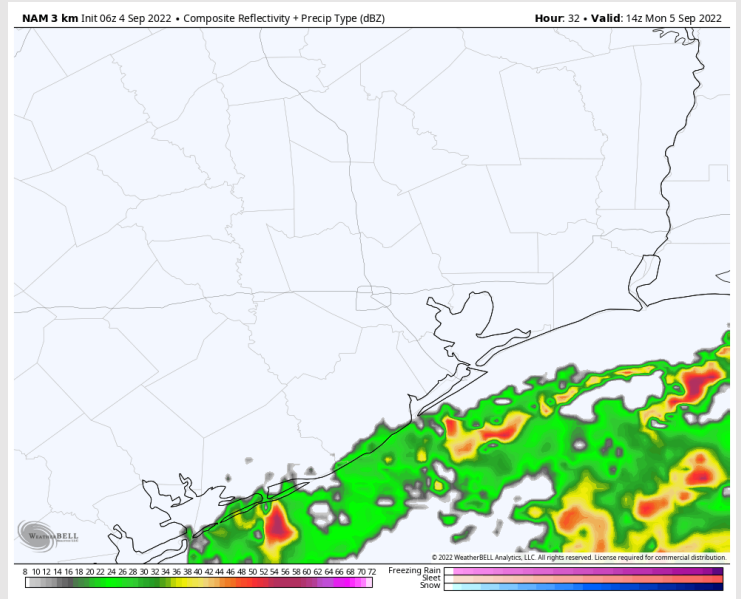
Precip: Targeting the 7-11 AM for a wave of showers and thunderstorms to ride along and east of the Gulf Coast with mainly dry conditions for the Northerly half of the stations (although low end chances will still be present). A few heavier downpours would be possible. For the PM hours, scattered showers will be favored over the Gulf with only isolated chances working north.

Wind: Sustained winds generally out of the SW 5-10 MPH Monday AM at the boarding station. From 8AM – Noon some variation of direction may occur. After 1 PM winds will veer out of the S at 8-13 MPH for all stations. Gusts of 13-18 MPH possible under stronger pockets of precip.

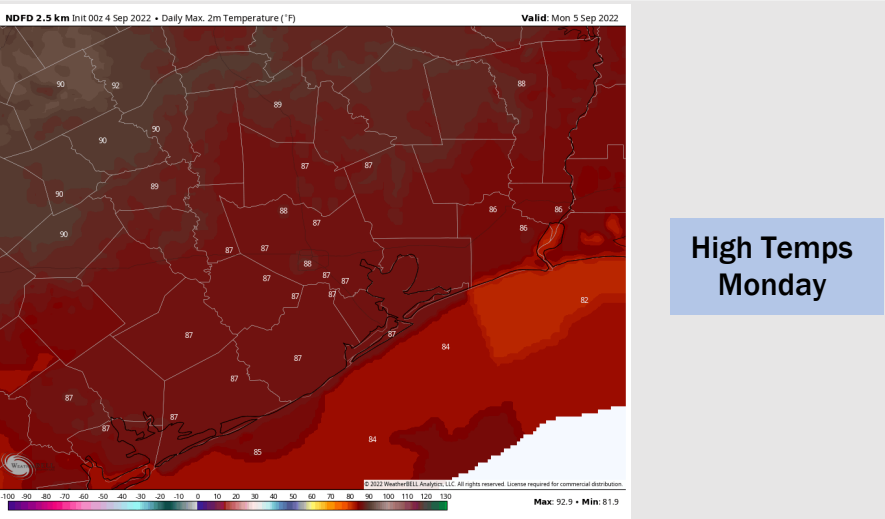
Temps: High temps Monday in the mid to high 80s F for all stations.

Visibility: Not anticipating any fog concerns at this time.

Precip Forecast: 10 AM CT



Wind Speed
2 PM CT



High Temps
Monday

Forecast Discussion

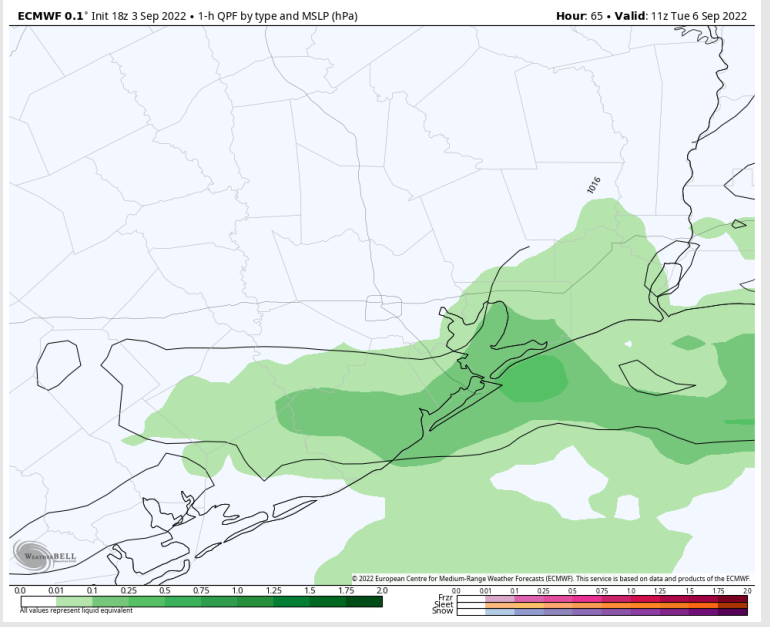
Precip: Anticipating a 20-30% of showers Tuesday morning. After 10 AM, favoring dry conditions until 2 PM. After 2 PM, a 10-20% of isolated showers/thunderstorms will be possible in the area until 7 PM. After 7 PM favoring dry conditions for the rest of the evening.

Wind: Winds out of the S/SE at 3-8 MPH in the early Tuesday morning for all stations. Around 7 AM winds become more variable for all stations at 3-6 MPH. After 1 PM, winds shift back out of the S/SE at 3-7 MPH for the rest of the day.

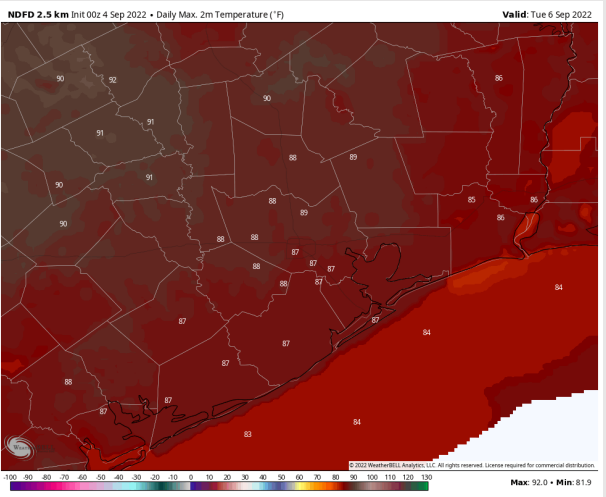
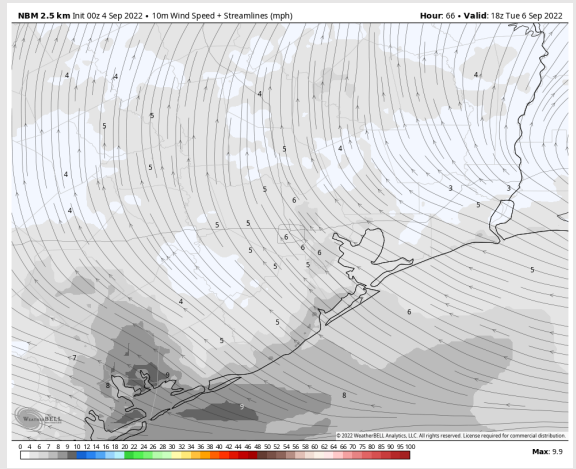
Temps: High temps today in the mid 80s F near the boarding station and in the upper 80s F at all other stations.

Visibility: Not anticipating fog concerns today, but lower visibility under stronger cell possible.

Precip Forecast: 6 AM CT

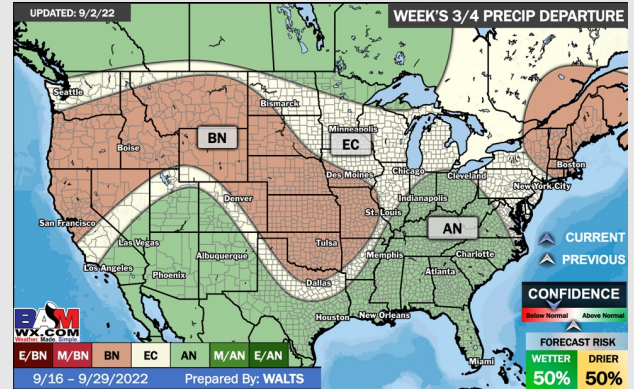
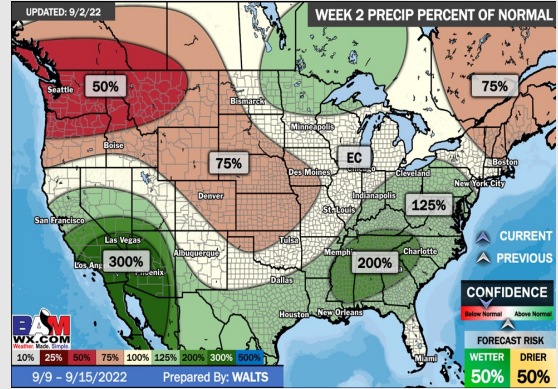
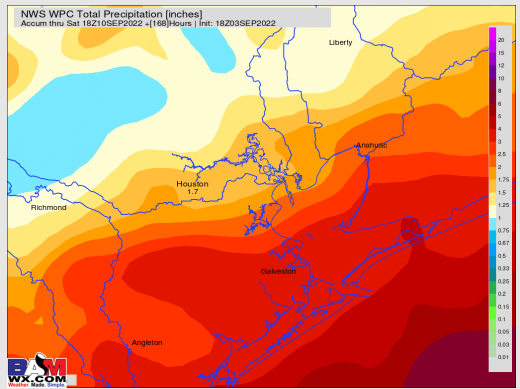
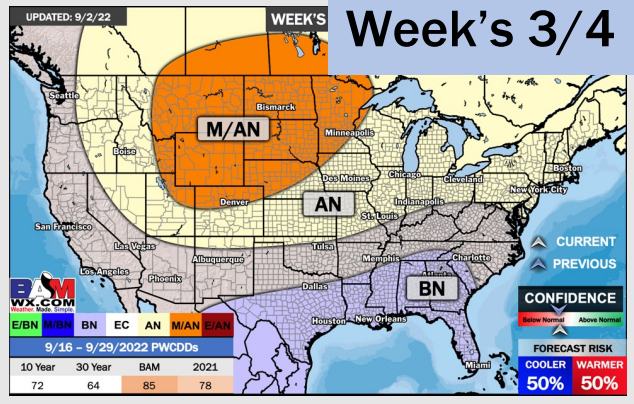
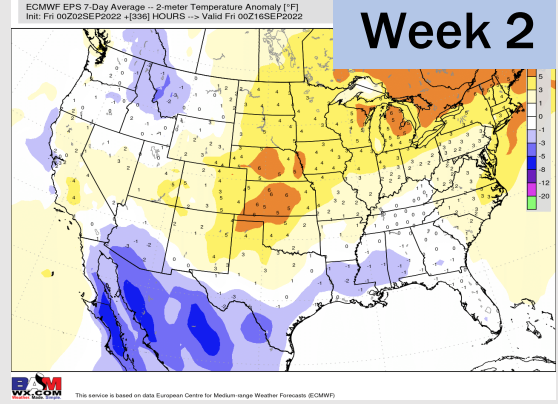
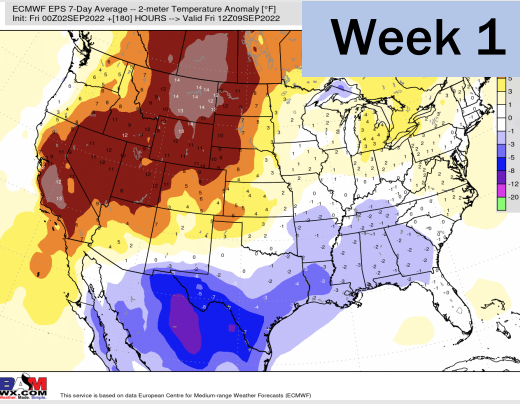


Wind Speed
1 PM CT



High Temps
Tue

Houston Pilots: 9/4/22



- Temperatures expected to be below normal for the next week. Increased rainfall chances as storms move through the area the next several days.
- Week 2 likely features below normal temperatures and above normal precipitation.
- The weeks 3/4 timeframe into mid September looks to feature below normal temperatures and above normal risks for precip.