

Houston Pilots Forecast Package



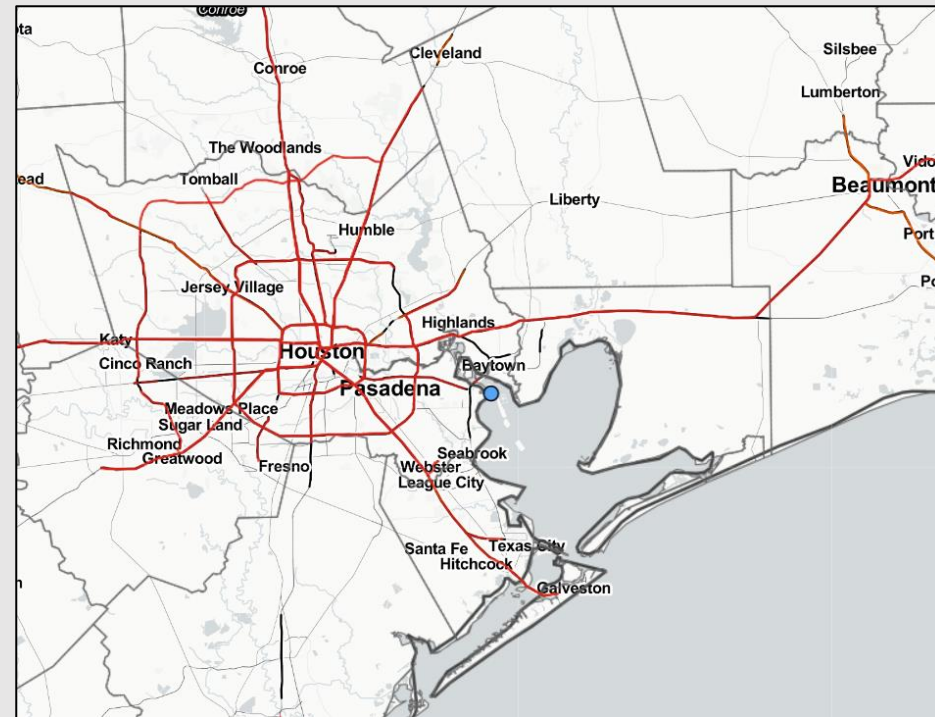
Updated: 2:00 PM CT

Sunday, September 25, 2022

Forecaster: Jonathan Kipper

Weather Headlines

- Mainly dry forecast throughout the remainder of the week and into next week.
- No direct tropical activity is favored in SE TX over the next 7 days. **Please check slide below for more thoughts on tropical activity in the Gulf.**
- Winds will remain calmer throughout today, however starting Monday PM, stronger sustained winds of 15-22 MPH will be possible as Tropical Storm Ian approaches the southeastern US.



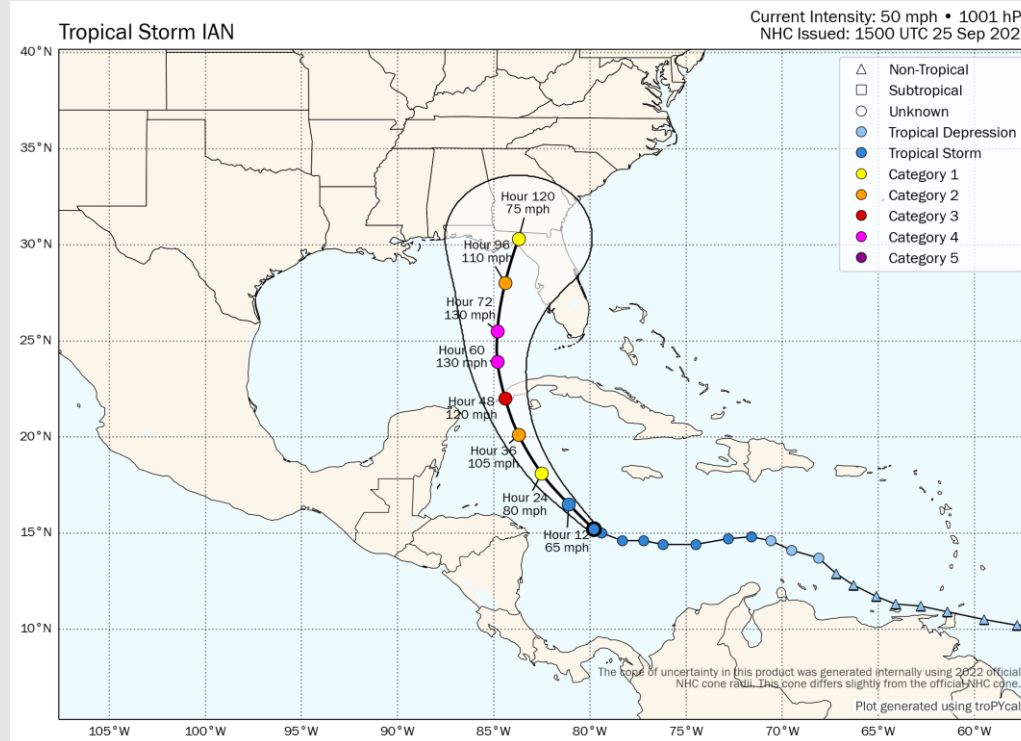
Radar/ NWS Alerts: 2:00 PM CT



As always, please do not hesitate to reach out to us with any forecast questions via the chat option on the Weather Porthole or our on-call number, **(317)-560-8122** press 1 for forecast questions.

Houston Pilots Extended Range Tropical Report

Tropical Storm Ian Favored Track



****No immediate tropical threats over the next 7 days for SE TX****

Confidence is high for SE TX not being at risk for direct impacts.

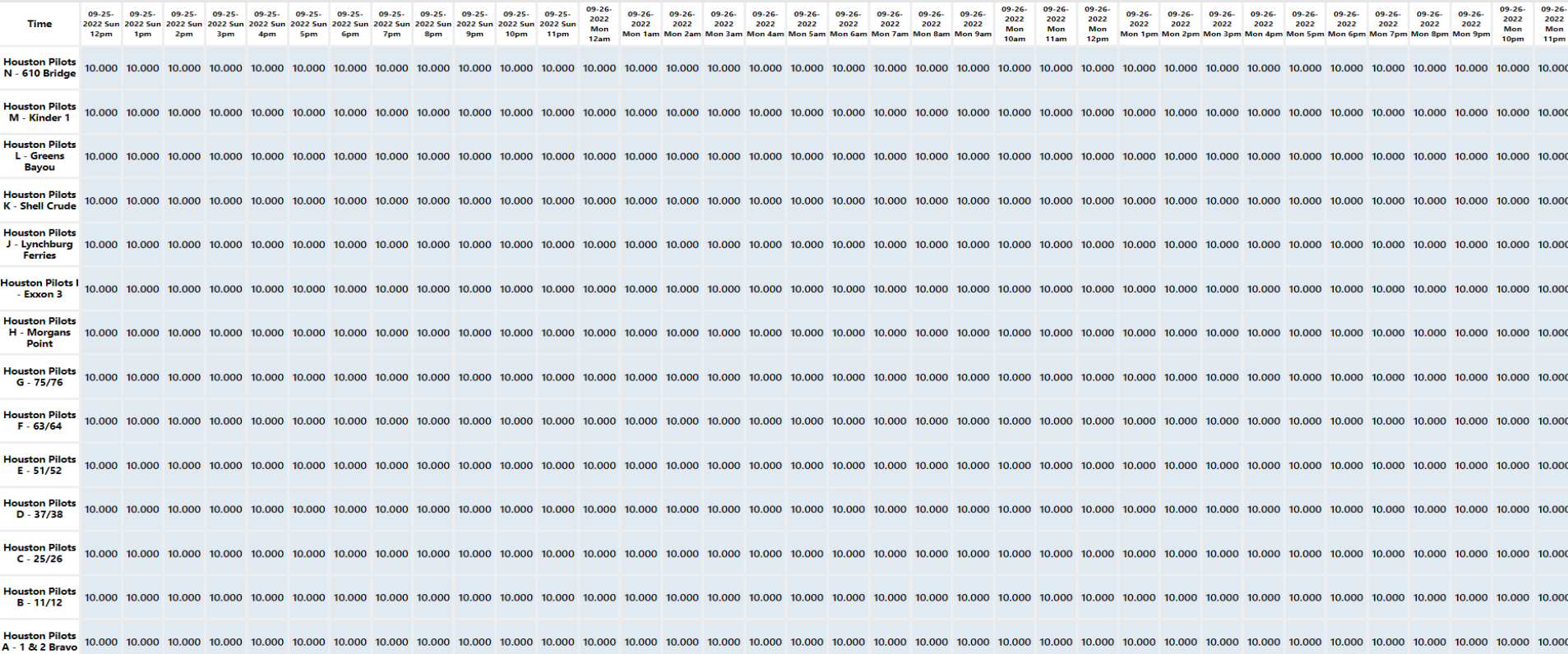
Given the proximity of Ian impacting the eastern Gulf, winds will increase late Monday - Wednesday given the proximity of the system, however. To be very clear sustained winds look to be 15 – 25 MPH with gusts of 25 – 35 MPH possible. We will need to watch Wednesday for potential wave heights to approach our 6 ft threshold.

Confidence

**Above
Normal**

**Below
Normal**

The image contains two logos. On the left is the logo for BAM WX.COM, featuring the letters 'BAM' in a stylized font with a white 'A' and a black dot, followed by 'WX.COM' in black and 'Weather. Made. Simple.' in blue and red below it. On the right is the logo for Houston Pilots, featuring a large red 'H' with the text 'Houston Pilots' in white to its right.



Houston Pilots Wind Report



Time	09-25-2022 Sun 12pm	09-25-2022 Sun 1pm	09-25-2022 Sun 2pm	09-25-2022 Sun 3pm	09-25-2022 Sun 4pm	09-25-2022 Sun 5pm	09-25-2022 Sun 6pm	09-25-2022 Sun 7pm	09-25-2022 Sun 8pm	09-25-2022 Sun 9pm	09-25-2022 Sun 10pm	09-25-2022 Sun 11pm	09-26-2022 Mon 12am	09-26-2022 Mon 1am	09-26-2022 Mon 2am	09-26-2022 Mon 3am	09-26-2022 Mon 4am	09-26-2022 Mon 5am	09-26-2022 Mon 6am	09-26-2022 Mon 7am	09-26-2022 Mon 8am	09-26-2022 Mon 9am	09-26-2022 Mon 10am	09-26-2022 Mon 11am	09-26-2022 Mon 12pm	09-26-2022 Mon 1pm	09-26-2022 Mon 2pm	09-26-2022 Mon 3pm	09-26-2022 Mon 4pm	09-26-2022 Mon 5pm	09-26-2022 Mon 6pm	09-26-2022 Mon 7pm	09-26-2022 Mon 8pm	09-26-2022 Mon 9pm	09-26-2022 Mon 10pm	09-26-2022 Mon 11pm	
Houston Pilots N - 610 Bridge	WS: 3 G:4 NW	WS: 4 G:4 NW	WS: 3 G:3 W	WS: 2 G:3 SW	WS: 3 G:4 SE	WS: 4 G:5 E	WS: 5 G:7 S	WS: 5 G:9 SSW	WS: 6 G:12 SSW	WS: 5 G:13 SW	WS: 4 G:9 SW	WS: 5 G:11 SW	WS: 5 G:11 SW	WS: 4 G:11 W	WS: 4 G:11 W	WS: 3 G:7 W	WS: 4 G:8 WNW	WS: 4 G:9 NW	WS: 5 G:10 NNW	WS: 6 G:11 N	WS: 7 G:12 N	WS: 9 G:14 NNE	WS: 10 G:14 NNE	WS: 10 G:14 NNE	WS: 11 G:15 NNE	WS: 11 G:16 NNE	WS: 11 G:16 NNE	WS: 12 G:17 NNE	WS: 12 G:17 NNE	WS: 12 G:17 NNE	WS: 12 G:18 NNE	WS: 11 G:17 NNE	WS: 11 G:17 NNE	WS: 10 G:15 NNE	WS: 9 G:16 NNE	WS: 8 G:15 NNE	WS: 8 G:13 NNE
Houston Pilots M - Kinder 1	WS: 2 G:4 NW	WS: 3 G:4 W	WS: 2 G:3 SSW	WS: 3 G:3 SSE	WS: 4 G:4 E	WS: 4 G:5 E	WS: 5 G:6 SSE	WS: 5 G:8 SSW	WS: 7 G:12 SSW	WS: 5 G:13 SW	WS: 4 G:9 SW	WS: 4 G:11 SW	WS: 4 G:11 WSW	WS: 4 G:11 W	WS: 5 G:11 W	WS: 3 G:7 W	WS: 4 G:8 WNW	WS: 4 G:9 NW	WS: 5 G:10 NNW	WS: 6 G:11 N	WS: 7 G:12 N	WS: 9 G:14 NNE	WS: 10 G:14 NNE	WS: 10 G:14 NNE	WS: 11 G:15 NNE	WS: 11 G:16 NNE	WS: 11 G:16 NNE	WS: 12 G:17 NNE	WS: 12 G:17 NNE	WS: 12 G:17 NNE	WS: 12 G:18 NNE	WS: 11 G:17 NNE	WS: 11 G:17 NNE	WS: 10 G:16 NNE	WS: 9 G:16 NNE	WS: 8 G:15 NNE	WS: 8 G:13 NNE
Houston Pilots L - Greens Bayou	WS: 2 G:3 NW	WS: 2 G:3 SSE	WS: 3 G:3 ESE	WS: 4 G:4 ENE	WS: 4 G:4 ENE	WS: 4 G:5 ESE	WS: 5 G:5 S	WS: 5 G:8 S	WS: 7 G:13 SW	WS: 5 G:12 SW	WS: 4 G:9 SW	WS: 4 G:10 WSW	WS: 4 G:10 WSW	WS: 4 G:11 W	WS: 5 G:12 W	WS: 3 G:7 W	WS: 4 G:7 NW	WS: 4 G:9 NW	WS: 5 G:10 NNW	WS: 6 G:11 N	WS: 7 G:12 N	WS: 9 G:14 NNE	WS: 10 G:14 NNE	WS: 10 G:14 NNE	WS: 11 G:16 NNE	WS: 11 G:16 NNE	WS: 11 G:16 NNE	WS: 12 G:17 NNE	WS: 12 G:17 NNE	WS: 12 G:17 NNE	WS: 12 G:17 NNE	WS: 11 G:16 NNE	WS: 11 G:16 NNE	WS: 9 G:16 NNE	WS: 9 G:16 NNE	WS: 8 G:15 NNE	WS: 8 G:13 NNE
Houston Pilots K - Shell Crude	WS: 2 G:3 NW	WS: 2 G:2 SE	WS: 3 G:3 ENE	WS: 4 G:5 ENE	WS: 5 G:6 E	WS: 4 G:6 ESE	WS: 5 G:5 SE	WS: 5 G:9 S	WS: 7 G:14 SW	WS: 5 G:12 SW	WS: 4 G:9 SW	WS: 4 G:10 WSW	WS: 3 G:10 WSW	WS: 4 G:11 W	WS: 5 G:12 W	WS: 4 G:7 W	WS: 4 G:8 WNW	WS: 4 G:9 NW	WS: 5 G:10 NNW	WS: 6 G:11 N	WS: 7 G:12 N	WS: 9 G:14 NNE	WS: 10 G:14 NNE	WS: 10 G:14 NNE	WS: 11 G:16 NNE	WS: 12 G:16 NNE	WS: 12 G:16 NNE	WS: 12 G:17 NNE	WS: 12 G:17 NNE	WS: 12 G:17 NNE	WS: 12 G:17 NNE	WS: 11 G:16 NNE	WS: 11 G:16 NNE	WS: 9 G:16 NNE	WS: 9 G:16 NNE	WS: 8 G:15 NNE	WS: 8 G:14 NNE
Houston Pilots J - Lynchburg Ferries	WS: 2 G:3 WNW	WS: 2 G:2 SSE	WS: 3 G:4 NE	WS: 4 G:4 NE	WS: 4 G:5 ESE	WS: 5 G:5 SE	WS: 5 G:6 S	WS: 5 G:9 S	WS: 6 G:14 SSW	WS: 5 G:11 SW	WS: 4 G:9 WSW	WS: 4 G:10 WSW	WS: 3 G:9 WSW	WS: 4 G:10 W	WS: 5 G:13 W	WS: 4 G:7 WNW	WS: 4 G:7 NW	WS: 5 G:9 NNW	WS: 6 G:10 NNW	WS: 6 G:11 N	WS: 7 G:12 N	WS: 10 G:15 NNE	WS: 11 G:14 NNE	WS: 11 G:14 NNE	WS: 11 G:16 NNE	WS: 12 G:16 NNE	WS: 12 G:16 NNE	WS: 12 G:17 NNE	WS: 12 G:17 NNE	WS: 12 G:17 N	WS: 12 G:17 N	WS: 11 G:16 NNE	WS: 11 G:16 NNE	WS: 9 G:16 NNE	WS: 9 G:16 NNE	WS: 8 G:15 NNE	WS: 8 G:14 NNE
Houston Pilots I - Exxon 3	WS: 2 G:3 WSW	WS: 2 G:3 SW	WS: 4 G:4 ENE	WS: 5 G:5 E	WS: 5 G:6 SSE	WS: 5 G:6 SSE	WS: 6 G:7 SSE	WS: 6 G:10 SSW	WS: 6 G:15 SSW	WS: 5 G:12 SW	WS: 4 G:10 SW	WS: 4 G:10 SW	WS: 3 G:9 SW	WS: 4 G:10 W	WS: 5 G:13 W	WS: 4 G:8 W	WS: 5 G:8 NW	WS: 5 G:9 NNW	WS: 6 G:11 NNW	WS: 6 G:12 N	WS: 7 G:13 NNE	WS: 10 G:15 NNE	WS: 11 G:14 NNE	WS: 11 G:14 NNE	WS: 11 G:16 NNE	WS: 12 G:16 NNE	WS: 12 G:16 NNE	WS: 12 G:17 N	WS: 12 G:17 N	WS: 12 G:16 NNE	WS: 12 G:16 NNE	WS: 11 G:16 NNE	WS: 11 G:16 NNE	WS: 9 G:16 NNE	WS: 9 G:16 NNE	WS: 9 G:15 NNE	WS: 9 G:15 NNE
Houston Pilots H - Morgans Point	WS: 2 G:3 SSE	WS: 3 G:4 SSE	WS: 5 G:6 ESE	WS: 7 G:7 SE	WS: 7 G:8 SSE	WS: 6 G:7 SSE	WS: 7 G:8 SSE	WS: 7 G:12 SSW	WS: 9 G:16 SSW	WS: 6 G:12 SW	WS: 6 G:11 SW	WS: 5 G:11 SW	WS: 5 G:10 SW	WS: 5 G:10 W	WS: 7 G:14 W	WS: 5 G:9 W	WS: 6 G:10 NW	WS: 6 G:11 NW	WS: 7 G:13 NNW	WS: 7 G:13 N	WS: 8 G:14 ENE	WS: 10 G:15 NNE	WS: 11 G:15 NNE	WS: 11 G:14 NNE	WS: 11 G:15 NNE	WS: 12 G:15 NNE	WS: 12 G:15 NNE	WS: 12 G:17 N	WS: 12 G:16 NNE	WS: 12 G:16 NNE	WS: 12 G:16 NNE	WS: 12 G:16 NNE	WS: 11 G:16 NNE	WS: 10 G:16 NNE	WS: 11 G:17 NNE	WS: 11 G:18 NNE	WS: 10 G:17 NNE
Houston Pilots G - 75/76	WS: 3 G:5 E	WS: 5 G:6 ESE	WS: 7 G:7 SE	WS: 8 G:8 SE	WS: 9 G:10 SSE	WS: 8 G:9 SSE	WS: 9 G:10 SSE	WS: 9 G:13 SSW	WS: 12 G:17 SW	WS: 10 G:13 SW	WS: 9 G:12 SW	WS: 9 G:12 SW	WS: 9 G:13 SW	WS: 9 G:12 WSW	WS: 10 G:15 W	WS: 7 G:11 W	WS: 8 G:12 NW	WS: 8 G:12 NNW	WS: 9 G:14 NNW	WS: 9 G:14 N	WS: 10 G:15 ESE	WS: 11 G:15 NNE	WS: 12 G:15 NNE	WS: 12 G:15 NNE	WS: 12 G:15 NNE	WS: 12 G:15 NNE	WS: 11 G:15 NNE	WS: 11 G:15 NNE	WS: 12 G:16 NNE	WS: 12 G:16 NNE	WS: 12 G:16 NNE	WS: 12 G:16 NNE	WS: 12 G:16 NNE	WS: 12 G:17 NNE	WS: 12 G:17 NNE	WS: 13 G:19 NNE	WS: 13 G:19 NNE
Houston Pilots F - 63/64	WS: 4 G:5 NE	WS: 5 G:6 E	WS: 6 G:6 ESE	WS: 7 G:8 SSE	WS: 8 G:10 SSE	WS: 8 G:10 SSE	WS: 9 G:11 S	WS: 10 G:13 SSW	WS: 12 G:16 SSW	WS: 11 G:15 SW	WS: 10 G:14 SW	WS: 10 G:13 SW	WS: 10 G:14 SW	WS: 10 G:14 WSW	WS: 11 G:15 W	WS: 8 G:12 W	WS: 8 G:12 WNW	WS: 9 G:13 NW	WS: 10 G:14 NNW	WS: 10 G:14 N	WS: 11 G:15 E	WS: 12 G:16 NNE	WS: 13 G:16 NNE	WS: 13 G:16 NNE	WS: 13 G:16 NNE	WS: 13 G:15 NNE	WS: 11 G:15 NNE	WS: 11 G:15 NNE	WS: 12 G:16 NNE	WS: 12 G:16 NNE	WS: 13 G:16 NNE	WS: 13 G:16 NNE	WS: 13 G:16 NNE	WS: 14 G:18 NNE	WS: 14 G:19 NNE	WS: 15 G:21 NNE	WS: 15 G:20 NNE
Houston Pilots E - 51/52	WS: 5 G:5 NE	WS: 4 G:5 ENE	WS: 4 G:4 ESE	WS: 5 G:6 SSE	WS: 6 G:9 SSE	WS: 8 G:10 S	WS: 10 G:12 SSW	WS: 10 G:13 SSW	WS: 11 G:15 SW	WS: 11 G:15 SW	WS: 10 G:14 SW	WS: 10 G:14 WSW	WS: 10 G:14 WSW	WS: 10 G:14 WSW	WS: 11 G:15 W	WS: 9 G:12 W	WS: 9 G:13 WNW	WS: 10 G:14 NW	WS: 10 G:15 NNW	WS: 11 G:15 NNW	WS: 11 G:16 NE	WS: 12 G:16 NNE	WS: 13 G:16 NNE	WS: 13 G:16 NNE	WS: 13 G:16 NNE	WS: 13 G:16 NNE	WS: 12 G:15 NNE	WS: 12 G:15 NNE	WS: 12 G:16 NNE	WS: 13 G:16 NNE	WS: 13 G:16 NNE	WS: 13 G:16 NNE	WS: 14 G:17 NNE	WS: 15 G:19 NNE	WS: 16 G:21 NNE	WS: 16 G:21 NNE	
Houston Pilots D - 37/38	WS: 5 G:6 ENE	WS: 4 G:5 E	WS: 3 G:3 ESE	WS: 3 G:5 SSE	WS: 6 G:8 S	WS: 8 G:9 S	WS: 9 G:10 SSW	WS: 11 G:12 SSW	WS: 11 G:13 SW	WS: 11 G:15 SW	WS: 10 G:14 SW	WS: 10 G:13 WSW	WS: 10 G:14 WSW	WS: 10 G:14 WSW	WS: 11 G:15 WSW	WS: 9 G:13 W	WS: 9 G:13 WNW	WS: 10 G:14 NW	WS: 11 G:15 NW	WS: 11 G:15 NNW	WS: 12 G:16 S	WS: 12 G:16 NNE	WS: 13 G:16 NNE	WS: 13 G:16 NNE	WS: 13 G:16 NNE	WS: 13 G:16 NNE	WS: 12 G:15 NNE	WS: 12 G:15 N	WS: 12 G:16 NNE	WS: 13 G:16 NNE	WS: 13 G:16 NNE	WS: 14 G:17 NNE	WS: 15 G:18 NNE	WS: 16 G:21 NNE	WS: 16 G:21 NNE		
Houston Pilots C - 25/26	WS: 4 G:5 E	WS: 4 G:4 E	WS: 3 G:3 ESE	WS: 4 G:4 SSE	WS: 7 G:7 SSE	WS: 7 G:8 S	WS: 8 G:10 SSW	WS: 9 G:11 SSW	WS: 9 G:13 SSW	WS: 10 G:15 SW	WS: 10 G:14 SW	WS: 9 G:13 SW	WS: 8 G:12 WSW	WS: 8 G:13 WSW	WS: 10 G:15 WSW	WS: 9 G:12 W	WS: 9 G:13 WNW	WS: 10 G:14 NW	WS: 11 G:15 NW	WS: 11 G:15 NNW	WS: 12 G:16 NW	WS: 13 G:16 NNE	WS: 13 G:16 NNE	WS: 13 G:16 NNE	WS: 13 G:16 NNE	WS: 13 G:16 NNE	WS: 12 G:15 NNE	WS: 12 G:15 N	WS: 12 G:16 NNE	WS: 13 G:16 NNE	WS: 13 G:16 NNE	WS: 14 G:17 NNE	WS: 15 G:18 NNE	WS: 16 G:21 NNE	WS: 16 G:21 NNE		
Houston Pilots B - 11/12	WS: 3 G:3 SSW	WS: 3 G:3 SE	WS: 5 G:5 SE	WS: 6 G:7 SSE	WS: 8 G:9 S	WS: 8 G:8 S	WS: 9 G:10 SSW	WS: 9 G:11 SSW	WS: 9 G:12 SW	WS: 10 G:14 SW	WS: 9 G:14 SW	WS: 9 G:13 SW	WS: 8 G:12 WSW	WS: 8 G:12 W	WS: 9 G:14 W	WS: 9 G:12 W	WS: 9 G:13 WNW	WS: 10 G:14 NW	WS: 11 G:15 NW	WS: 12 G:15 NNW	WS: 12 G:16 NNW	WS: 13 G:16 N	WS: 13 G:16 NNE	WS: 13 G:16 NNE	WS: 13 G:16 NNE	WS: 12 G:15 NNE	WS: 12 G:15 N	WS: 12 G:16 NNE	WS: 13 G:16 NNE	WS: 13 G:16 NNE	WS: 13 G:16 NNE	WS: 14 G:17 NNE	WS: 15 G:18 NNE	WS: 16 G:21 NNE	WS: 17 G:22 NNE		
Houston Pilots A - 1 & 2 Bravo	WS: 4 G:4 NNW	WS: 4 G:2 ESE	WS: 4 G:4 SSE	WS: 7 G:7 S	WS: 8 G:8 S	WS: 8 G:9 S	WS: 10 G:10 SSW	WS: 10 G:10 SW	WS: 10 G:11 SW	WS: 12 G:13 SW	WS: 12 G:13 SW	WS: 12 G:13 SW	WS: 10 G:11 WSW	WS: 11 G:12 W	WS: 11 G:12 W	WS: 10 G:12 W	WS: 11 G:14 WNW	WS: 12 G:16 NW	WS: 13 G:16 NNW	WS: 13 G:16 N	WS: 14 G:16 NNE	WS: 14 G:16 NNE	WS: 14 G:16 NNE	WS: 13 G:16 NNE	WS: 13 G:16 NNE	WS: 12 G:14 NNE	WS: 11 G:13 NNE	WS: 12 G:14 NNE	WS: 13 G:15 NNE	WS: 14 G:16 NNE	WS: 15 G:17 NNE	WS: 16 G:19 NNE	WS: 18 G:23 NNE	WS: 18 G:23 NNE			

See slides below for official thoughts on winds.

Houston Pilots: Sun. 9/25/2022

Forecast Discussion

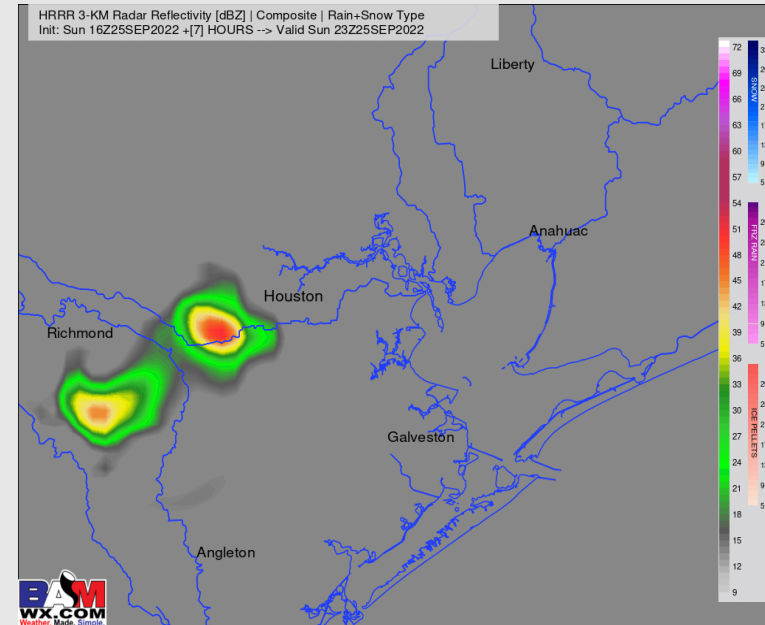
Precip: A couple hit and miss pockets of rain from 5-8PM (20%) are possible, but dry conditions outside of that for the rest of the day.

Wind: Winds until 4PM will be variable at 3-8 MPH. After 4PM winds will increase to 8-13 MPH out of the SW and continue for the rest of the PM. Gusts up to 18 MPH possible

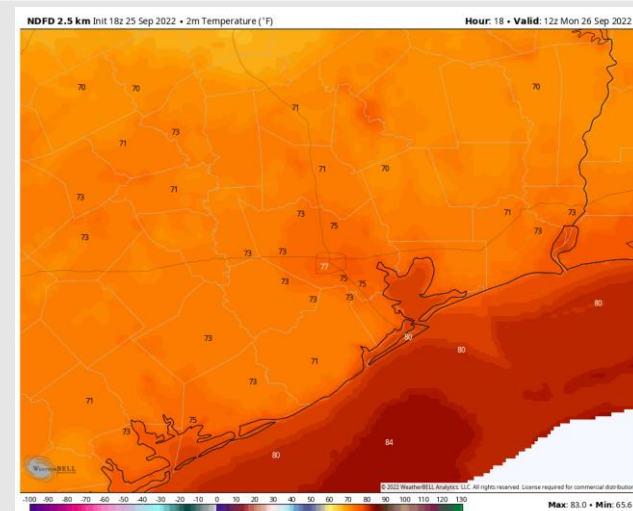
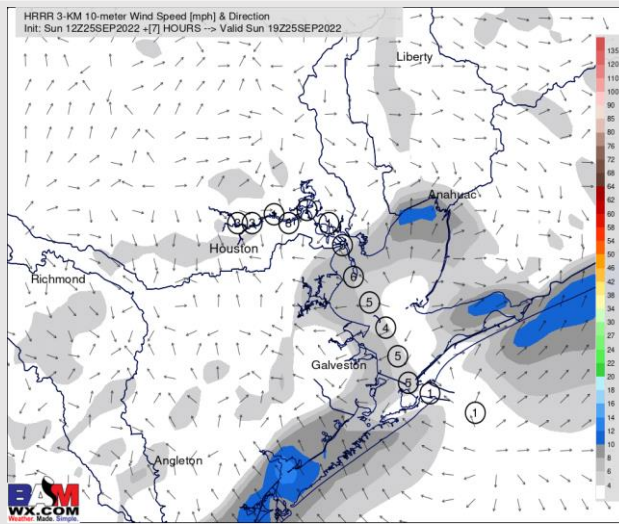
Temps: Low temperatures near 80 F near the boarding station and mid 70's at all other stations.

Visibility: Not anticipating fog concerns at this time.

Precip Forecast: 6 PM CT



Wind Speed
3 PM CT



Low Temps
Monday

Houston Pilots: Mon. 9/26/2022

Forecast Discussion

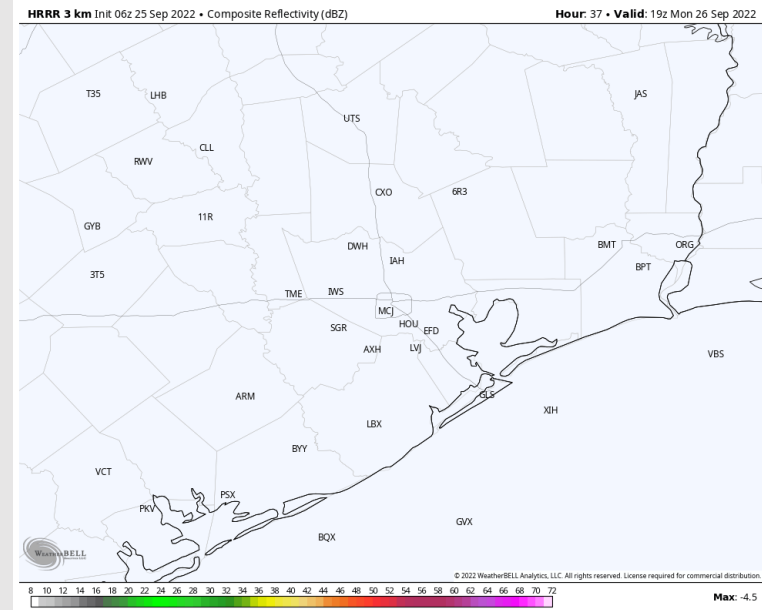
Precip: Anticipating dry conditions Monday.

Wind: Sustained winds will start out of the SW early in the AM Monday at 8-13 MPH. By 4AM winds will be out of the NNW at 8-13 MPH. Around 10AM winds will shift out of the NE at 10-15 MPH and continue for the rest of the day. After 8 PM, winds south of Morgan's Point increase to 17-24 MPH. Wind gusts of 30 MPH possible through 8 AM and again in the late PM hours.

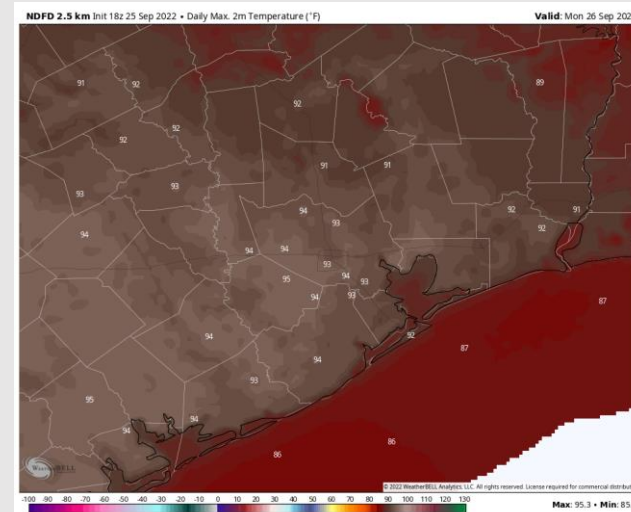
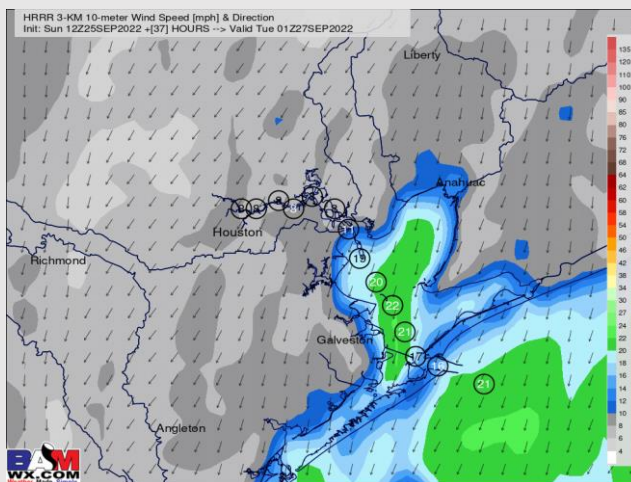
Temps: High temps in the upper 80s F near the boarding station and in the mid 90s F at all other stations.

Visibility: Not anticipating fog concerns at this time.

Precip Forecast: 2 PM CT



Wind Speed
8 PM CT



High Temps
Monday

Houston Pilots: Tue. 9/27/2022

Forecast Discussion

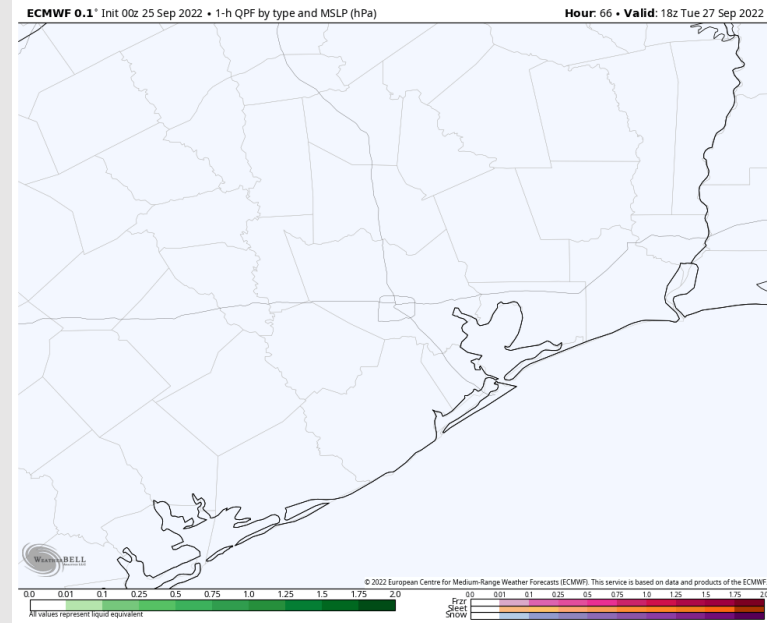
Precip: Anticipating dry conditions throughout the day Tuesday.

Wind: Sustained winds out of the NE at 18-22 MPH until 10 AM Tuesday south of Morgan's Point. After 10 AM, winds calmer at 12-15 MPH until 3 PM. After 4 PM, winds die down to 6-8 MPH until 7 PM. After 8 PM, winds pick back up to 18-24 MPH for the rest of the evening. Winds north of Morgan's Point 3-8 MPH all day. Gusts up to 30 MPH Tuesday evening.

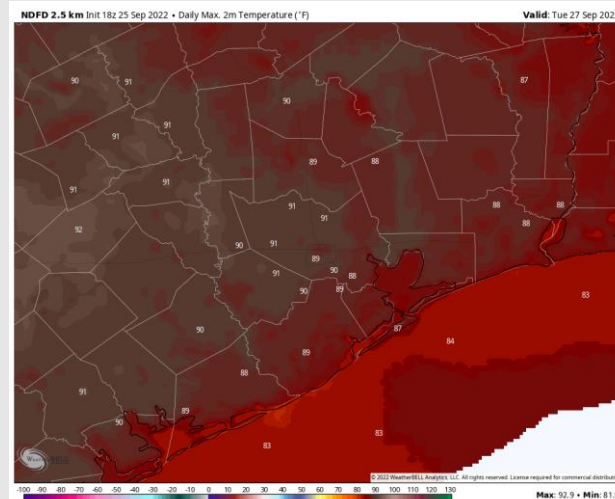
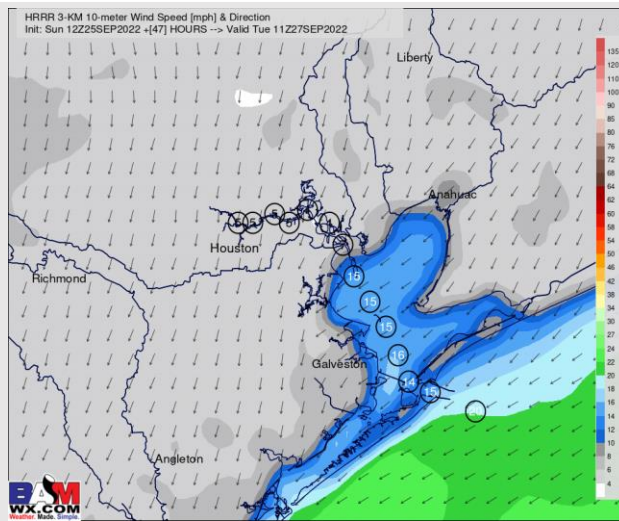
Temps: High temps Tuesday in the mid 80s F near the boarding station and in the near 90s F at all other stations.

Visibility: Not anticipating fog concerns at this time.

Precip Forecast: 1 PM CT

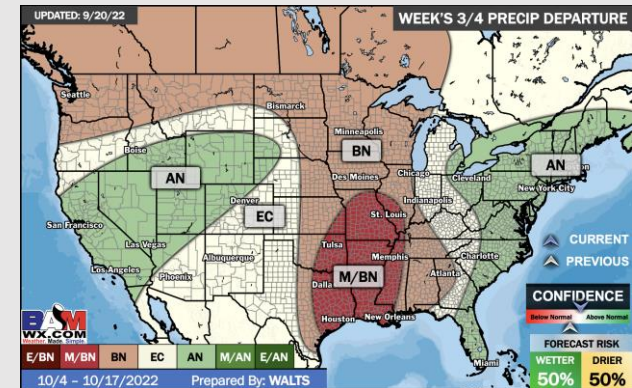
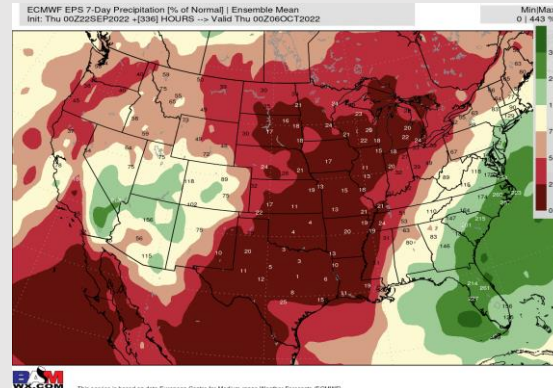
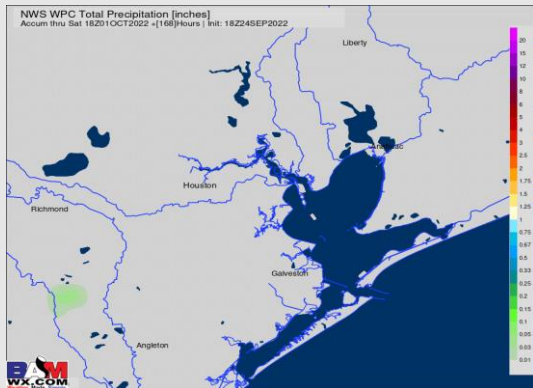
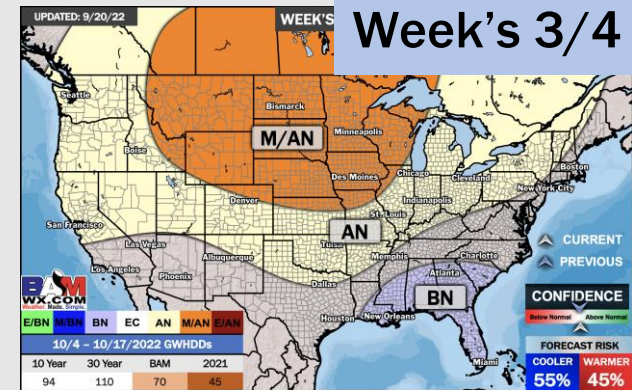
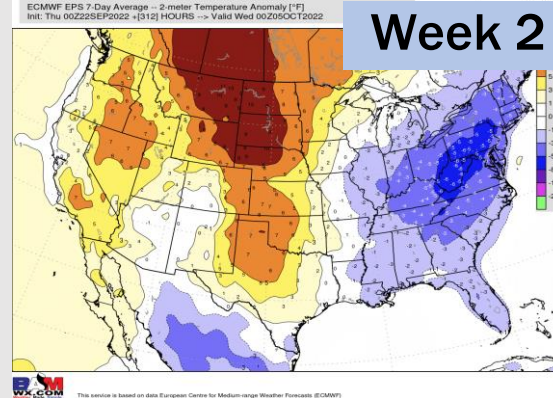
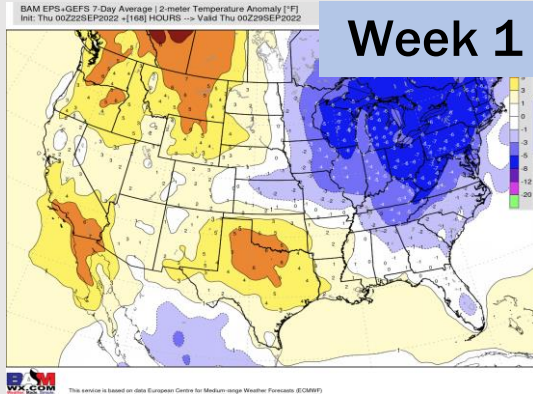


Wind Speed
2 PM CT



High Temps
Tuesday

Houston Pilots: 9/25/2022



- Temperatures expected to be above normal for the next week. Expecting the next several days to be drier with only very minor chances in the beginning of week 1.
- Week 2 likely features near normal temperatures and below normal precipitation.
- The weeks ³/₄ timeframe into mid October looks to feature below normal temperatures and below normal risks for precip.