

Houston Pilots Forecast Package

Houston Pilots



Updated: 1:00 PM CT

Friday, September 2, 2022

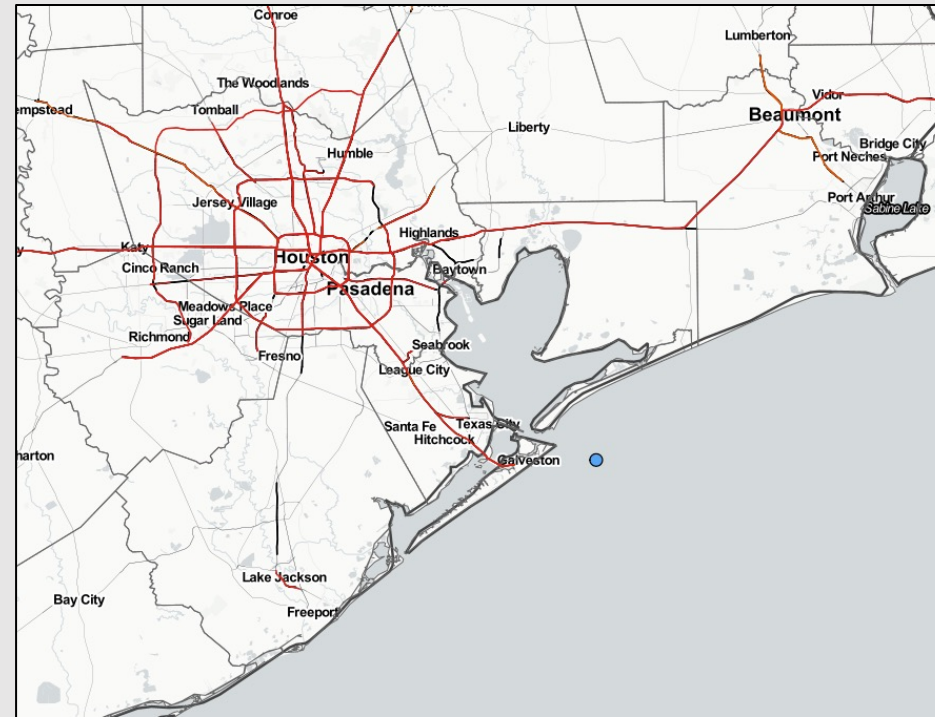
Forecaster: Vince Bryan

Weather Headlines

➤ Anticipating lower end precip chances today. Saturday into early next week will feature at least 60+% chances of seeing precip each day. The overall active pattern continues.

➤ No tropical activity is favored in the Gulf over the next 7-10 days.

➤ Winds will continue to remain calmer with any elevated winds likely coming from pockets of stronger precipitation.



Radar/ NWS Alerts: 1:00 PM CT

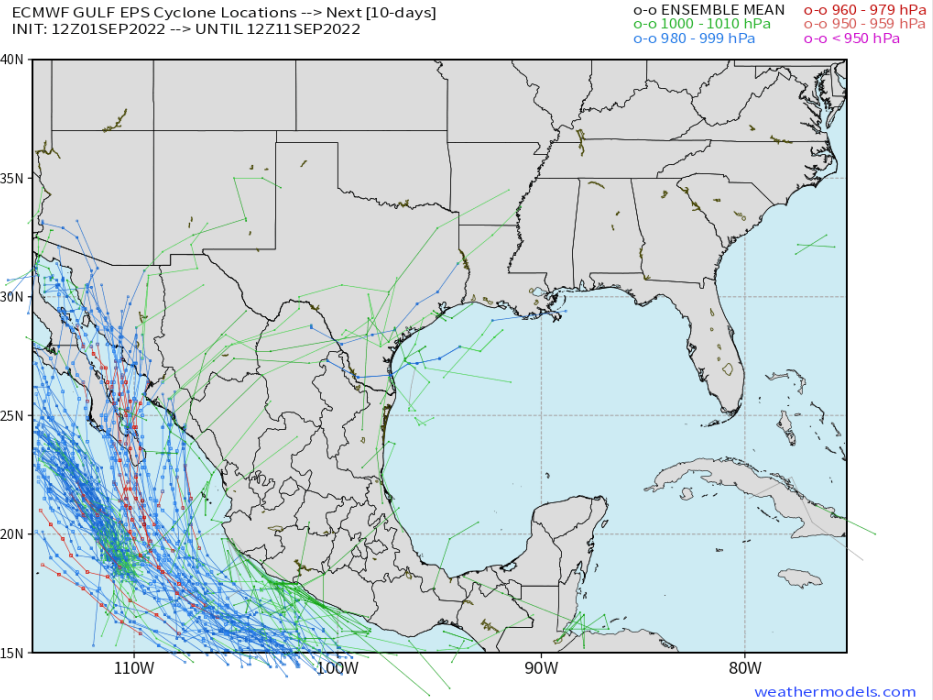


As always, please do not hesitate to reach out to us with any forecast questions via the chat option on the Weather Porthole or our on-call number, **(317)-560-8122** press 1 for forecast questions.

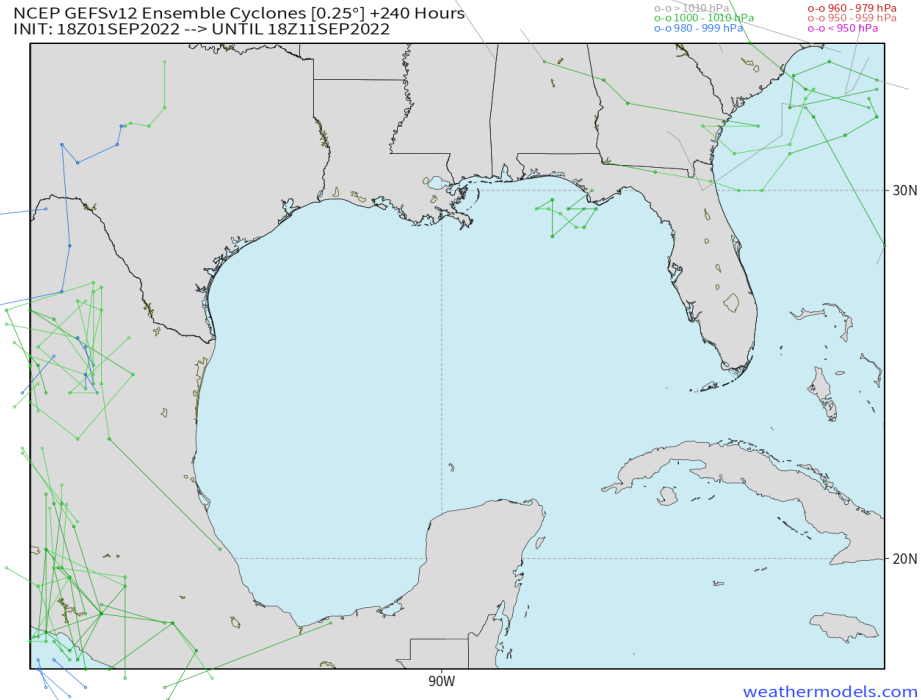
Houston Pilots Extended Range Tropical Report



European Data Tracks Next 10 Days



American Data Tracks Next 10 Days



No tropical threats over the next 7-10 days in the Gulf Of Mexico. Any tropical activity will stay confined to the Atlantic.



Houston Pilots Visibility Report

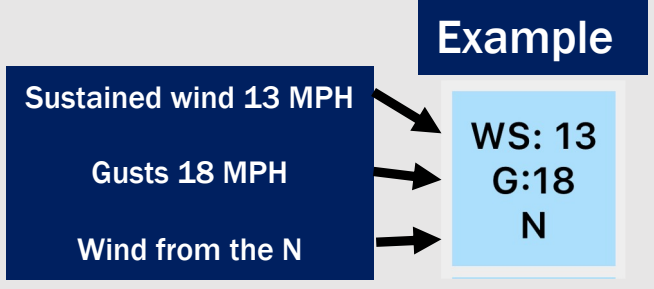


Confidence



Time	09-02-2022 Fri 10am	09-02-2022 Fri 11am	09-02-2022 Fri 12pm	09-02-2022 Fri 1pm	09-02-2022 Fri 2pm	09-02-2022 Fri 3pm	09-02-2022 Fri 4pm	09-02-2022 Fri 5pm	09-02-2022 Fri 6pm	09-02-2022 Fri 7pm	09-02-2022 Fri 8pm	09-02-2022 Fri 9pm	09-02-2022 Fri 10pm	09-02-2022 Fri 11pm	09-03-2022 Sat 12am	09-03-2022 Sat 1am	09-03-2022 Sat 2am	09-03-2022 Sat 3am	09-03-2022 Sat 4am	09-03-2022 Sat 5am	09-03-2022 Sat 6am	09-03-2022 Sat 7am	09-03-2022 Sat 8am	09-03-2022 Sat 9am	09-03-2022 Sat 10am	09-03-2022 Sat 11am	09-03-2022 Sat 12pm	09-03-2022 Sat 1pm	09-03-2022 Sat 2pm	09-03-2022 Sat 3pm	09-03-2022 Sat 4pm	09-03-2022 Sat 5pm	09-03-2022 Sat 6pm	09-03-2022 Sat 7pm	09-03-2022 Sat 8pm	09-03-2022 Sat 9pm		
Houston Pilots N - 610 Bridge	10.000	10.000	10.000	10.000	10.000	10.000	10.000	10.000	10.000	10.000	10.000	10.000	10.000	10.000	10.000	10.000	10.000	10.000	10.000	10.000	10.000	7.954	10.000	10.000	10.000	10.000	10.000	8.988	6.964	5.910	5.248	4.931	6.227	4.931	4.931	5.930		
Houston Pilots M - Kinder 1	10.000	10.000	10.000	10.000	10.000	10.000	10.000	10.000	10.000	10.000	10.000	10.000	10.000	10.000	10.000	10.000	10.000	10.000	10.000	10.000	10.000	7.974	10.000	10.000	10.000	10.000	10.000	9.018	8.256	7.493	6.789	6.789	6.661	5.945	5.996	6.700		
Houston Pilots L - Greens Bayou	10.000	10.000	10.000	10.000	10.000	10.000	10.000	10.000	10.000	10.000	10.000	10.000	10.000	10.000	10.000	10.000	10.000	10.000	10.000	10.000	10.000	8.000	10.000	10.000	10.000	10.000	10.000	10.000	9.907	9.480	9.086	9.086	9.480	7.312	7.312	7.706		
Houston Pilots K - Shell Crude	10.000	10.000	10.000	10.000	10.000	10.000	10.000	10.000	10.000	10.000	10.000	10.000	10.000	10.000	10.000	10.000	10.000	10.000	10.000	10.000	10.000	8.988	10.000	10.000	10.000	10.000	10.000	10.000	10.000	10.000	10.000	10.000	10.000	10.000	8.988	8.988	8.988	
Houston Pilots J - Lynchburg Ferries	10.000	10.000	10.000	10.000	10.000	10.000	10.000	10.000	10.000	10.000	10.000	10.000	10.000	10.000	10.000	10.000	10.000	10.000	10.000	10.000	10.000	8.988	10.000	10.000	10.000	10.000	10.000	10.000	10.000	10.000	10.000	10.000	10.000	10.000	8.988	8.988	8.988	
Houston Pilots I - Exxon 3	10.000	10.000	10.000	10.000	10.000	10.000	10.000	10.000	10.000	10.000	10.000	10.000	10.000	10.000	10.000	10.000	10.000	10.000	10.000	10.000	10.000	9.399	10.000	10.000	10.000	10.000	10.000	9.755	10.000	10.000	10.000	10.000	10.000	10.000	10.000	8.988	8.988	8.988
Houston Pilots H - Morgans Point	10.000	10.000	10.000	10.000	10.000	10.000	10.000	10.000	10.000	10.000	10.000	10.000	10.000	10.000	10.000	10.000	10.000	10.000	10.000	10.000	10.000	9.438	10.000	10.000	10.000	10.000	10.000	8.988	10.000	10.000	10.000	10.000	10.000	10.000	10.000	8.988	8.988	8.988
Houston Pilots G - 75/76	10.000	10.000	10.000	10.000	10.000	10.000	10.000	10.000	10.000	10.000	10.000	10.000	10.000	10.000	10.000	10.000	10.000	10.000	10.000	10.000	10.000	10.000	10.000	10.000	10.000	10.000	10.000	8.988	10.000	10.000	10.000	10.000	10.000	10.000	10.000	8.988	8.988	8.988
Houston Pilots F - 63/64	10.000	10.000	10.000	10.000	10.000	10.000	10.000	10.000	10.000	10.000	10.000	10.000	10.000	10.000	10.000	10.000	10.000	10.000	10.000	10.000	10.000	10.000	10.000	10.000	10.000	10.000	10.000	8.988	10.000	10.000	10.000	10.000	10.000	10.000	10.000	8.988	8.988	8.988
Houston Pilots E - 51/52	10.000	10.000	10.000	10.000	10.000	10.000	10.000	10.000	10.000	10.000	10.000	10.000	10.000	10.000	10.000	10.000	10.000	10.000	10.000	10.000	10.000	10.000	10.000	10.000	10.000	10.000	10.000	8.988	10.000	10.000	10.000	10.000	10.000	10.000	10.000	10.000	10.000	10.000
Houston Pilots D - 37/38	10.000	10.000	10.000	10.000	10.000	10.000	10.000	10.000	10.000	10.000	10.000	10.000	10.000	10.000	10.000	10.000	10.000	10.000	10.000	10.000	10.000	10.000	10.000	10.000	10.000	10.000	10.000	8.988	8.988	10.000	10.000	10.000	10.000	10.000	10.000	10.000	10.000	10.000
Houston Pilots C - 25/26	10.000	10.000	10.000	10.000	10.000	10.000	10.000	10.000	10.000	10.000	10.000	10.000	10.000	10.000	10.000	10.000	10.000	10.000	10.000	10.000	10.000	10.000	10.000	10.000	10.000	10.000	10.000	8.988	8.988	10.000	10.000	10.000	8.988	8.988	10.000	10.000	10.000	10.000
Houston Pilots B - 11/12	10.000	10.000	10.000	10.000	10.000	10.000	10.000	10.000	10.000	10.000	10.000	10.000	10.000	10.000	10.000	10.000	10.000	10.000	10.000	10.000	10.000	10.000	10.000	10.000	10.000	10.000	10.000	8.988	8.988	10.000	10.000	8.988	8.988	10.000	10.000	10.000	10.000	
Houston Pilots A - 1 & 2 Bravo	10.000	10.000	10.000	10.000	10.000	10.000	10.000	10.000	10.000	10.000	10.000	10.000	10.000	10.000	10.000	10.000	10.000	10.000	10.000	10.000	10.000	10.000	10.000	10.000	10.000	10.000	10.000	9.822	8.988	8.988	8.988	8.988	8.988	8.988	10.000	10.000	10.000	10.000

Houston Pilots Wind Report



Time	09-02-2022 Fri 10am	09-02-2022 Fri 11am	09-02-2022 Fri 12pm	09-02-2022 Fri 1pm	09-02-2022 Fri 2pm	09-02-2022 Fri 3pm	09-02-2022 Fri 4pm	09-02-2022 Fri 5pm	09-02-2022 Fri 6pm	09-02-2022 Fri 7pm	09-02-2022 Fri 8pm	09-02-2022 Fri 9pm	09-02-2022 Fri 10pm	09-02-2022 Fri 11pm	09-03-2022 Sat 12am	09-03-2022 Sat 1am	09-03-2022 Sat 2am	09-03-2022 Sat 3am	09-03-2022 Sat 4am	09-03-2022 Sat 5am	09-03-2022 Sat 6am	09-03-2022 Sat 7am	09-03-2022 Sat 8am	09-03-2022 Sat 9am	09-03-2022 Sat 10am	09-03-2022 Sat 11am	09-03-2022 Sat 12pm	09-03-2022 Sat 1pm	09-03-2022 Sat 2pm	09-03-2022 Sat 3pm	09-03-2022 Sat 4pm	09-03-2022 Sat 5pm	09-03-2022 Sat 6pm	09-03-2022 Sat 7pm	09-03-2022 Sat 8pm	09-03-2022 Sat 9pm	
Houston Pilots N - 610 Bridge	WS: 2 G:3 NE	WS: 3 G:4 ESE	WS: 3 G:4 ESE	WS: 3 G:4 E	WS: 3 G:4 ENE	WS: 6 G:7 E	WS: 6 G:7 E	WS: 6 G:8 ESE	G:11 SE	WS: 8 G:13 SW	WS: 4 G:5 NW	WS: 7 G:11 W	WS: 1 G:1 ENE	WS: 2 G:5 E	WS: 3 G:6 SE	WS: 2 G:2 ESE	WS: 2 G:3 ESE	WS: 2 G:3 ESE	WS: 1 G:3 ESE	WS: 1 G:2 E	WS: 2 G:3 ENE	WS: 2 G:3 NE	WS: 3 G:3 NNE	WS: 4 G:4 NNE	WS: 4 G:5 NNE	WS: 4 G:7 NE	WS: 5 G:7 NE	WS: 5 G:8 ENE	WS: 6 G:9 E	WS: 6 G:10 E	WS: 5 G:10 ESE	WS: 5 G:10 SE	WS: 4 G:8 S	WS: 4 G:7 ENE	WS: 3 G:4 SSW	WS: 3 G:3 S	
Houston Pilots M - Kinder 1	WS: 2 G:3 NE	WS: 3 G:4 ESE	WS: 4 G:5 E	WS: 4 G:4 ENE	WS: 4 G:5 ENE	WS: 6 G:7 E	WS: 6 G:7 E	WS: 8 G:9 ESE	WS: 7 G:12 SE	WS: 4 G:6 WNW	WS: 6 G:9 W	WS: 1 G:1 NE	WS: 2 G:4 E	WS: 3 G:6 ESE	WS: 2 G:2 ESE	WS: 2 G:3 ESE	WS: 2 G:2 ESE	WS: 1 G:3 ESE	WS: 1 G:2 ESE	WS: 2 G:2 ENE	WS: 2 G:3 NE	WS: 3 G:3 NNE	WS: 4 G:4 NNE	WS: 4 G:5 NNE	WS: 4 G:7 NE	WS: 5 G:6 NE	WS: 5 G:8 ENE	WS: 5 G:9 E	WS: 6 G:10 E	WS: 5 G:9 ESE	WS: 5 G:10 SE	WS: 4 G:7 SE	WS: 4 G:7 E	WS: 3 G:4 SW	WS: 2 G:3 S		
Houston Pilots L - Greens Bayou	WS: 2 G:3 NE	WS: 3 G:5 ESE	WS: 4 G:5 E	WS: 4 G:4 E	WS: 4 G:5 E	WS: 5 G:6 ESE	WS: 6 G:7 ESE	WS: 8 G:9 ESE	WS: 9 G:13 ESE	WS: 6 G:12 SSE	WS: 4 G:7 WSW	WS: 5 G:8 WSW	WS: 1 G:2 SE	WS: 1 G:3 E	WS: 2 G:5 ESE	WS: 2 G:3 ESE	WS: 2 G:3 ESE	WS: 2 G:2 E	WS: 1 G:2 E	WS: 1 G:2 ENE	WS: 2 G:2 NE	WS: 2 G:3 NNE	WS: 3 G:3 NNE	WS: 4 G:4 NNE	WS: 4 G:5 NNE	WS: 4 G:6 NNE	WS: 4 G:7 NE	WS: 5 G:7 NE	WS: 5 G:8 ESE	WS: 6 G:8 ESE	WS: 6 G:10 E	WS: 5 G:9 ESE	WS: 5 G:9 ESE	WS: 4 G:7 ESE	WS: 4 G:6 ESE	WS: 3 G:3 SSW	WS: 2 G:3 S
Houston Pilots K - Shell Crude	WS: 2 G:3 NE	WS: 3 G:5 E	WS: 5 G:6 ESE	WS: 4 G:5 E	WS: 6 G:6 ESE	WS: 6 G:7 ESE	WS: 8 G:8 ESE	WS: 9 G:10 ESE	WS: 9 G:13 ESE	WS: 7 G:13 ESE	WS: 5 G:9 S	WS: 4 G:7 SW	WS: 1 G:3 SE	WS: 1 G:4 SE	WS: 1 G:5 ESE	WS: 2 G:3 ESE	WS: 2 G:4 ESE	WS: 2 G:3 E	WS: 1 G:3 ESE	WS: 1 G:2 ESE	WS: 2 G:2 ENE	WS: 2 G:3 NE	WS: 3 G:3 NNE	WS: 4 G:4 NNE	WS: 4 G:5 NNE	WS: 4 G:6 NNE	WS: 5 G:6 NE	WS: 5 G:7 E	WS: 5 G:8 ESE	WS: 6 G:8 ESE	WS: 6 G:9 ESE	WS: 5 G:9 ESE	WS: 5 G:9 ESE	WS: 4 G:7 ESE	WS: 4 G:6 ESE	WS: 2 G:3 S	WS: 2 G:3 S
Houston Pilots J - Lynchburg Ferries	WS: 2 G:3 NE	WS: 3 G:5 ESE	WS: 4 G:5 ESE	WS: 4 G:4 SE	WS: 5 G:5 SE	WS: 6 G:6 SE	WS: 7 G:7 SE	WS: 8 G:11 SE	WS: 9 G:13 SE	WS: 7 G:13 SE	WS: 4 G:9 SSW	WS: 3 G:8 W	WS: 2 G:4 S	WS: 1 G:4 E	WS: 1 G:5 ESE	WS: 3 G:3 E	WS: 3 G:4 E	WS: 2 G:3 E	WS: 2 G:3 E	WS: 2 G:3 E	WS: 2 G:3 E	WS: 3 G:3 E	WS: 4 G:4 E	WS: 4 G:5 E	WS: 4 G:6 E	WS: 4 G:7 E	WS: 5 G:7 E	WS: 5 G:8 E	WS: 6 G:8 E	WS: 6 G:9 E	WS: 5 G:9 E	WS: 5 G:9 ESE	WS: 5 G:7 ESE	WS: 5 G:7 ESE	WS: 4 G:6 S	WS: 3 G:3 S	WS: 3 G:3 S
Houston Pilots I - Exxon 3	WS: 2 G:3 NE	WS: 3 G:5 ESE	WS: 4 G:5 SE	WS: 4 G:5 SSE	WS: 6 G:7 SSE	WS: 7 G:8 SSE	WS: 8 G:10 SSE	WS: 9 G:11 SE	WS: 10 G:13 SE	WS: 8 G:14 ESE	WS: 5 G:8 SSE	WS: 3 G:6 SSW	WS: 2 G:5 SSW	WS: 1 G:6 SSW	WS: 3 G:5 ESE	WS: 3 G:5 ESE	WS: 3 G:5 ESE	WS: 3 G:4 E	WS: 2 G:3 ESE	WS: 2 G:3 ESE	WS: 2 G:3 ENE	WS: 3 G:4 NE	WS: 3 G:4 NNE	WS: 4 G:5 NNE	WS: 4 G:5 NNE	WS: 4 G:6 NNE	WS: 5 G:6 ENE	WS: 5 G:6 ENE	WS: 6 G:7 SE	WS: 6 G:8 SE	WS: 5 G:8 ESE	WS: 5 G:8 ESE	WS: 5 G:7 ESE	WS: 4 G:6 SSE	WS: 4 G:4 S	WS: 3 G:3 S	
Houston Pilots H - Morgans Point	WS: 3 G:4 ENE	WS: 5 G:6 SE	WS: 4 G:5 SE	WS: 5 G:6 SE	WS: 7 G:8 SSE	WS: 8 G:9 SSE	WS: 10 G:11 SSE	WS: 9 G:11 SE	WS: 10 G:13 ESE	WS: 10 G:15 ESE	WS: 7 G:11 ESE	WS: 4 G:9 SE	WS: 3 G:7 SE	WS: 3 G:7 SSW	WS: 2 G:7 SSW	WS: 4 G:6 ESE	WS: 4 G:6 ESE	WS: 4 G:6 ESE	WS: 3 G:6 ESE	WS: 3 G:5 ESE	WS: 3 G:4 ENE	WS: 3 G:4 ENE	WS: 3 G:4 NE	WS: 4 G:4 NE	WS: 4 G:5 NE	WS: 4 G:6 NE	WS: 4 G:7 E	WS: 5 G:7 E	WS: 6 G:8 E	WS: 6 G:8 SE	WS: 5 G:8 ESE	WS: 5 G:8 E	WS: 5 G:7 ESE	WS: 4 G:6 SE	WS: 4 G:4 S	WS: 3 G:3 S	
Houston Pilots G - 75/76	WS: 6 G:6 ENE	WS: 6 G:7 ESE	WS: 3 G:6 E	WS: 4 G:7 SSE	WS: 7 G:8 SSE	WS: 9 G:10 SSE	WS: 10 G:12 SSE	WS: 11 G:13 SE	WS: 12 G:14 ESE	WS: 8 G:10 ESE	WS: 6 G:8 SE	WS: 5 G:7 SE	WS: 6 G:8 SSE	WS: 5 G:7 SSE	WS: 5 G:8 S	WS: 5 G:8 ESE	WS: 6 G:8 SE	WS: 5 G:7 SE	WS: 4 G:6 ESE	WS: 4 G:6 ESE	WS: 4 G:5 ENE	WS: 4 G:5 ENE	WS: 4 G:5 NE	WS: 4 G:6 NE	WS: 4 G:6 NE	WS: 4 G:7 E	WS: 5 G:7 E	WS: 5 G:8 E	WS: 5 G:8 ESE	WS: 6 G:8 ESE	WS: 6 G:8 ESE	WS: 5 G:8 ESE	WS: 5 G:7 ESE	WS: 4 G:6 ESE	WS: 4 G:6 S	WS: 4 G:6 S	
Houston Pilots F - 63/64	WS: 7 G:7 ENE	WS: 4 G:7 E	WS: 4 G:7 SSE	WS: 4 G:8 SSE	WS: 6 G:9 SSE	WS: 9 G:10 SSE	WS: 12 G:13 SSE	WS: 11 G:13 SE	WS: 11 G:12 SE	WS: 8 G:9 ESE	WS: 6 G:8 SSE	WS: 5 G:7 SSE	WS: 5 G:8 SSE	WS: 6 G:8 SSE	WS: 5 G:7 SSE	WS: 5 G:8 SSE	WS: 6 G:8 SSE	WS: 6 G:8 SSE	WS: 5 G:8 SSE	WS: 5 G:7 SSE	WS: 4 G:6 SSE	WS: 4 G:5 ENE	WS: 4 G:5 ENE	WS: 4 G:6 ENE	WS: 4 G:6 ENE	WS: 4 G:7 E	WS: 5 G:7 E	WS: 5 G:8 E	WS: 5 G:8 ESE	WS: 6 G:8 ESE	WS: 6 G:8 ESE	WS: 5 G:8 ESE	WS: 5 G:7 ESE	WS: 4 G:6 SE	WS: 4 G:6 S	WS: 4 G:6 S	
Houston Pilots E - 51/52	WS: 6 G:7 NE	WS: 3 G:7 ENE	WS: 5 G:7 SE	WS: 4 G:7 SSE	WS: 7 G:9 SSE	WS: 10 G:10 SSE	WS: 11 G:12 SSE	WS: 11 G:11 SE	WS: 10 G:11 SE	WS: 8 G:9 SE	WS: 6 G:7 SE	WS: 4 G:6 SSE	WS: 6 G:8 SSE	WS: 7 G:8 SSE	WS: 6 G:8 SSE	WS: 6 G:8 SSE	WS: 6 G:8 SSE	WS: 5 G:8 SSE	WS: 5 G:7 SSE	WS: 5 G:7 SSE	WS: 4 G:6 SSE	WS: 4 G:5 E	WS: 3 G:5 E	WS: 4 G:6 E	WS: 4 G:6 E	WS: 5 G:7 ENE	WS: 5 G:7 ENE	WS: 5 G:8 E	WS: 5 G:8 ESE	WS: 6 G:8 ESE	WS: 6 G:8 ESE	WS: 5 G:8 ESE	WS: 5 G:7 ESE	WS: 4 G:6 SE	WS: 4 G:6 S	WS: 4 G:6 S	
Houston Pilots D - 37/38	WS: 6 G:8 NE	WS: 4 G:7 E	WS: 4 G:6 SSE	WS: 4 G:7 SE	WS: 8 G:9 SE	WS: 10 G:10 SE	WS: 11 G:11 SSE	WS: 10 G:10 SSE	WS: 9 G:10 SE	WS: 7 G:8 SE	WS: 4 G:7 SE	WS: 4 G:6 SSE	WS: 4 G:7 SSE	WS: 6 G:8 SSE	WS: 7 G:9 SSE	WS: 7 G:9 SSE	WS: 6 G:8 SSE	WS: 6 G:8 SSE	WS: 5 G:8 SSE	WS: 5 G:7 SSE	WS: 4 G:6 SSE	WS: 4 G:5 ESE	WS: 4 G:5 ESE	WS: 4 G:6 ESE	WS: 4 G:6 ESE	WS: 5 G:7 ENE	WS: 5 G:7 ENE	WS: 5 G:8 E	WS: 5 G:8 ESE	WS: 6 G:8 ESE	WS: 6 G:8 ESE	WS: 5 G:8 ESE	WS: 5 G:7 ESE	WS: 4 G:6 SE	WS: 4 G:6 S	WS: 4 G:6 S	
Houston Pilots C - 25/26	WS: 6 G:8 NE	WS: 7 G:9 SE	WS: 4 G:6 SE	WS: 6 G:7 ESE	WS: 8 G:9 SE	WS: 9 G:10 SE	WS: 10 G:11 SSE	WS: 10 G:10 SSE	WS: 8 G:9 SE	WS: 6 G:8 SE	WS: 5 G:7 SE	WS: 4 G:6 SSE	WS: 4 G:7 SSE	WS: 5 G:8 SSE	WS: 7 G:9 SSE	WS: 7 G:9 SSE	WS: 6 G:8 SSE	WS: 6 G:8 SSE	WS: 5 G:8 SSE	WS: 5 G:7 SSE	WS: 4 G:6 SSE	WS: 4 G:5 ESE	WS: 4 G:5 ESE	WS: 4 G:6 ESE	WS: 4 G:6 ESE	WS: 5 G:7 ENE	WS: 5 G:7 ENE	WS: 5 G:8 E	WS: 5 G:8 ESE	WS: 6 G:8 ESE	WS: 6 G:8 ESE	WS: 5 G:8 ESE	WS: 5 G:7 ESE	WS: 4 G:6 SE	WS: 4 G:6 S	WS: 4 G:6 S	
Houston Pilots B - 11/12	WS: 5 G:8 ENE	WS: 10 G:11 S	WS: 3 G:6 SE	WS: 6 G:8 ESE	WS: 7 G:9 ESE	WS: 9 G:10 SE	WS: 10 G:11 SSE	WS: 10 G:10 SSE	WS: 8 G:9 SE	WS: 7 G:8 SE	WS: 5 G:7 SE	WS: 5 G:8 SSE	WS: 6 G:9 SSE	WS: 7 G:9 SSE	WS: 5 G:8 SSE	WS: 5 G:8 SSE	WS: 7 G:9 SSE	WS: 7 G:9 SSE	WS: 6 G:8 SSE	WS: 6 G:7 SSE	WS: 5 G:6 SSE	WS: 4 G:5 SSE	WS: 4 G:5 SSE	WS: 4 G:6 SSE	WS: 4 G:6 SSE	WS: 4 G:7 E	WS: 5 G:7 E	WS: 5 G:8 E	WS: 5 G:8 ESE	WS: 6 G:8 ESE	WS: 6 G:8 ESE	WS: 5 G:8 ESE	WS: 5 G:7 ESE	WS: 4 G:6 SE	WS: 4 G:6 S	WS: 4 G:6 S	
Houston Pilots A - 1 & 2 Bravo	WS: 6 G:7 E	WS: 13 G:13 SSW	WS: 2 G:6 SE	WS: 3 G:7 ENE	WS: 4 G:7 ESE	WS: 4 G:8 SE	WS: 7 G:10 SSE	WS: 9 G:10 SSE	WS: 9 G:9 SSE	WS: 8 G:8 SE	WS: 5 G:7 SE	WS: 8 G:8 SE	WS: 7 G:8 SE	WS: 7 G:8 SE	WS: 6 G:9 SE	WS: 8 G:9 SSE	WS: 8 G:9 SSE	WS: 8 G:9 SSE	WS: 7 G:8 SSE	WS: 6 G:7 SSE	WS: 5 G:6 SSE	WS: 4 G:5 SSE	WS: 4 G:5 SSE	WS: 4 G:6 SSE	WS: 4 G:6 SSE	WS: 4 G:7 SW	WS: 5 G:7 E	WS: 5 G:8 W	WS: 5 G:8 ESE	WS: 6 G:8 ESE	WS: 6 G:8 ESE	WS: 5 G:8 ESE	WS: 5 G:7 ESE	WS: 4 G:6 SE	WS: 4 G:6 S	WS: 4 G:6 S	

See slides below for official thoughts on winds.

Houston Pilots: Fri. 9/2/2022



Forecast Discussion

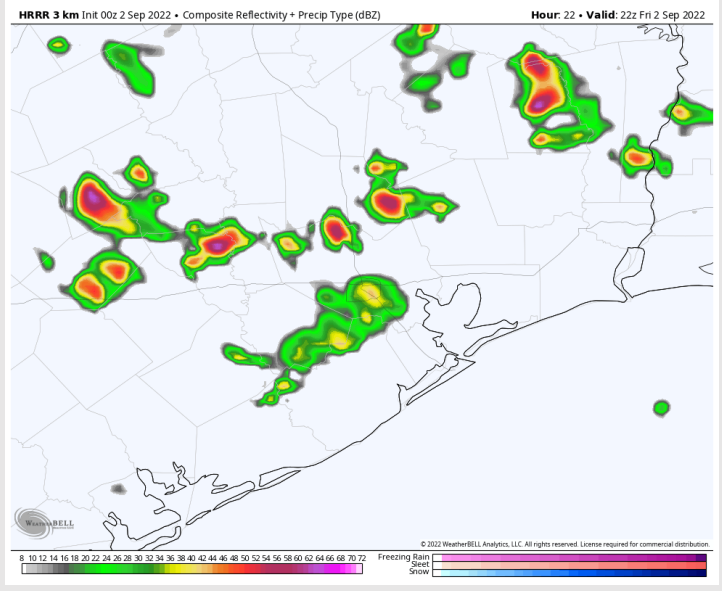
Precip: Chances the rest of the afternoon for all stations will be around 20-30% until 7PM, then decrease back down to 10% for the rest of the evening. Gusty winds, locally heavy downpours and lightning all possible under stronger cells.

Wind: Winds will increase to 5-10 MPH after 2 PM and will be out of the SE. Afternoon gusts of 10-20 MPH will be possible under stronger cells that develop.

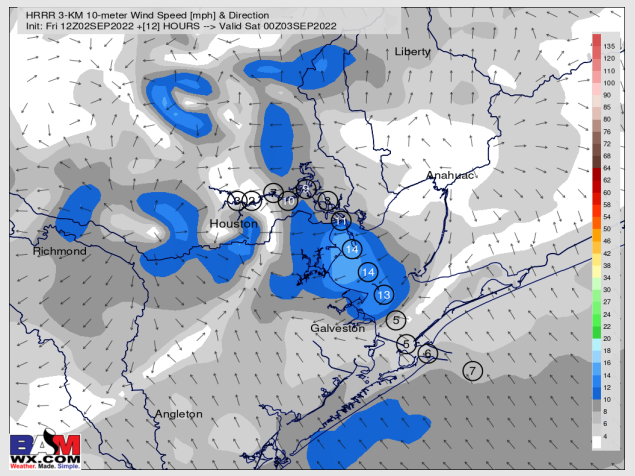
Temps: Lows fall back into the upper 70s to lower 80s for the stations this evening.

Visibility: No fog anticipated. Under heavier cells that develop, visibility can be reduced.

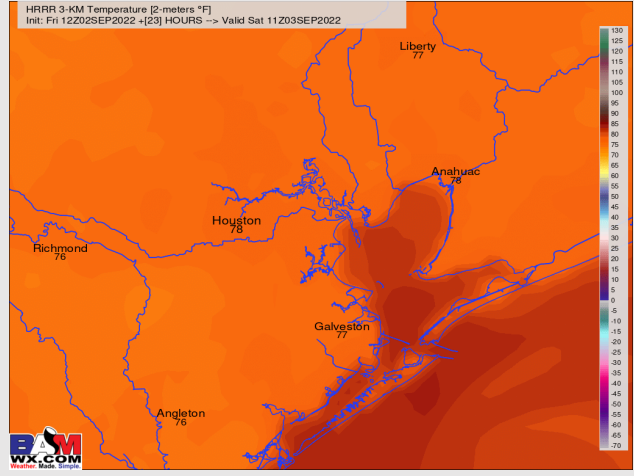
Precip Forecast: 5 PM CT



Wind Speed
8 PM CT



Low Temps
Sat AM



Houston Pilots: sat. 9/3/2022



Forecast Discussion

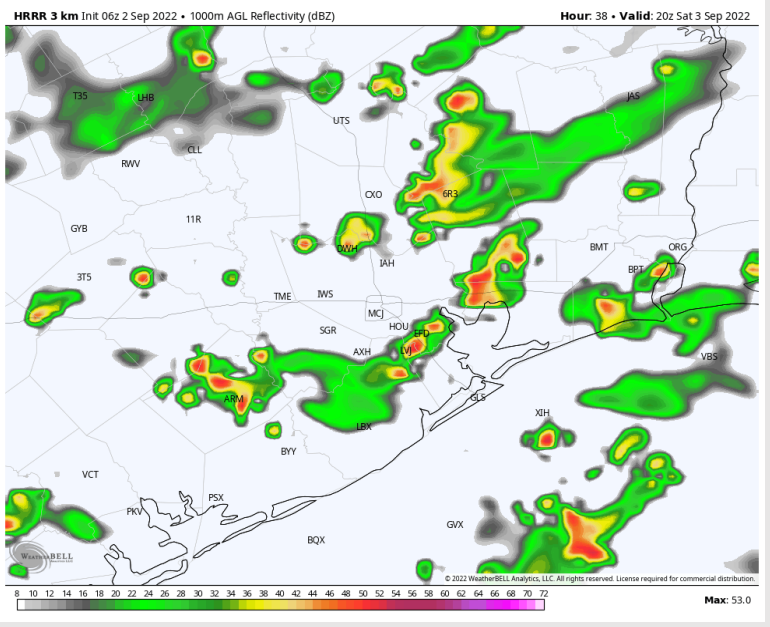
Precip: Anticipating a 70% chance for scattered showers/storms throughout the day Saturday. Heaviest potential likely exists into the later afternoon when peak instability can be realized. While severe threat looks limited at this distance, heavy rain and lightning will be possible.

Wind: Winds will generally be on the lighter side on SAT with winds out of the SE. Sustained winds likely hover around 5-10 MPH with gusts to 15 MPH possible. Afternoon should be more out of the south. Under heavier cells that form, some gusts around 20 MPH cannot be ruled out.

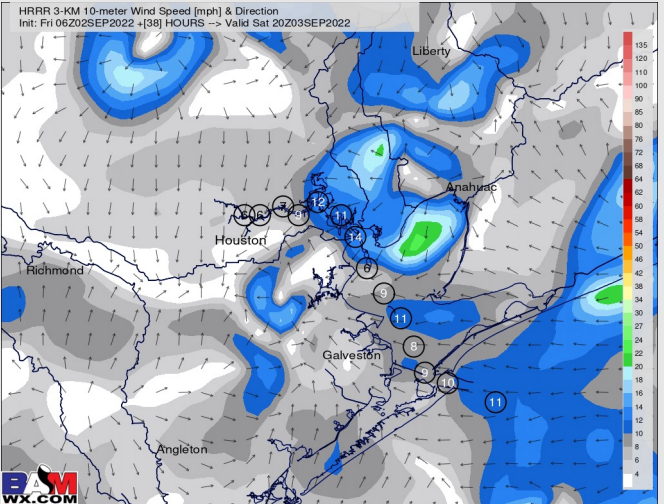
Temps: High temps Saturday in the mid 80s F for all stations.

Visibility: Not anticipating fog concerns for Saturday.

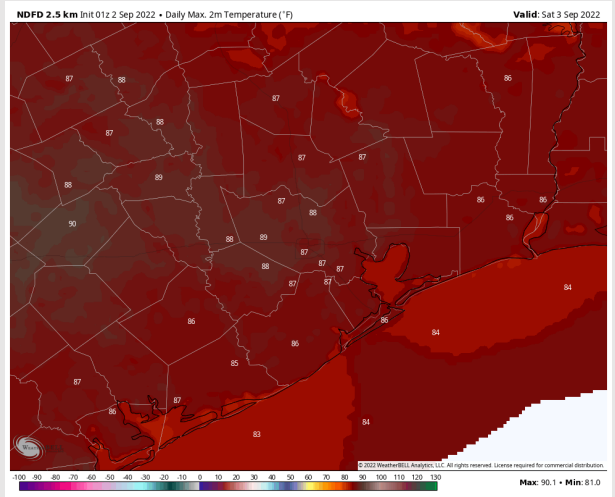
Precip Forecast: 3 PM CT



Wind Speed 10 AM CT



High Temps Saturday



Houston Pilots: Sun. 9/4/2022

Forecast Discussion

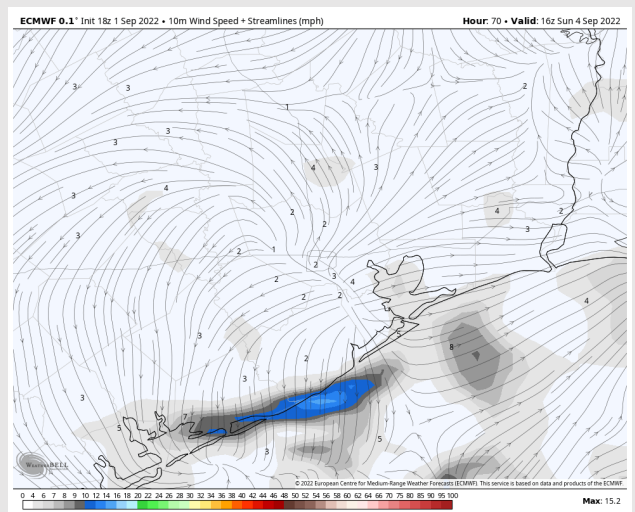
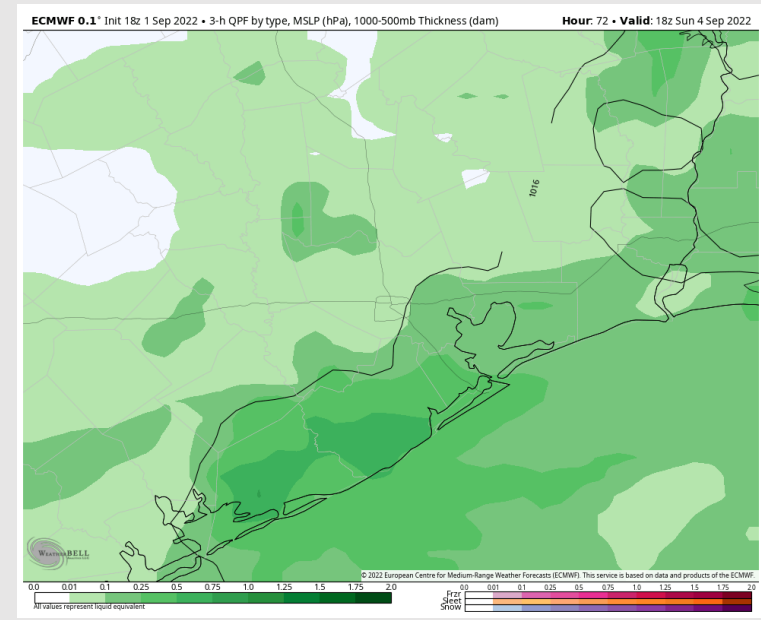
Precip: Anticipating the scattered showers/storms from the overnight to continue into Sunday AM and through Sunday PM.

Wind: Sustained winds out of the SSW in the early AM 5-10 MPH. By 6AM, winds become more variable and a lot calmer at 3-8 MPH. By 5PM winds will veer from the south still at 3-8 MPH and continue for the rest of the evening.

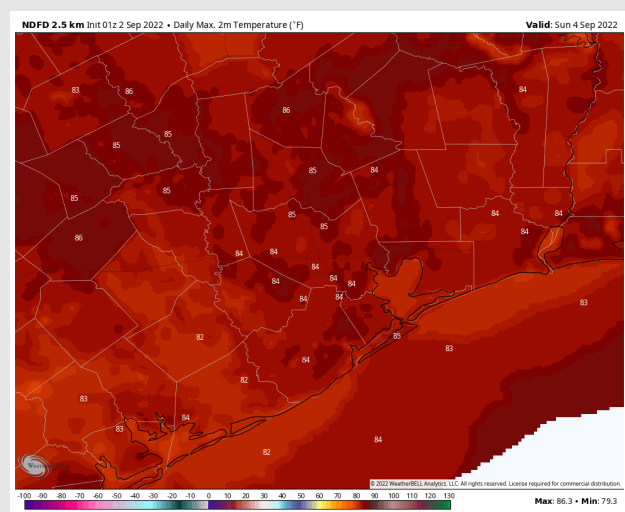
Temps: High temps Sunday in the mid 80s F for all stations.

Visibility: Not anticipating any fog concerns at this time.

Precip Forecast: 1 PM CT

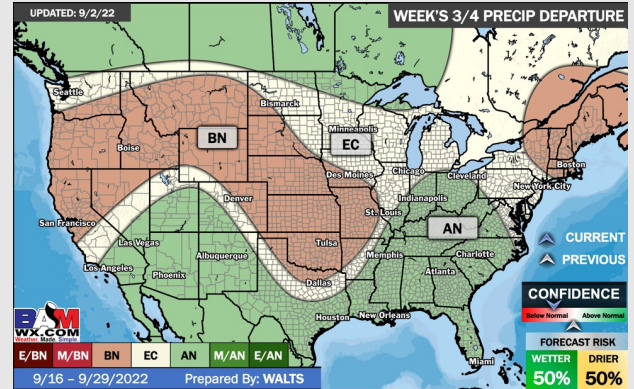
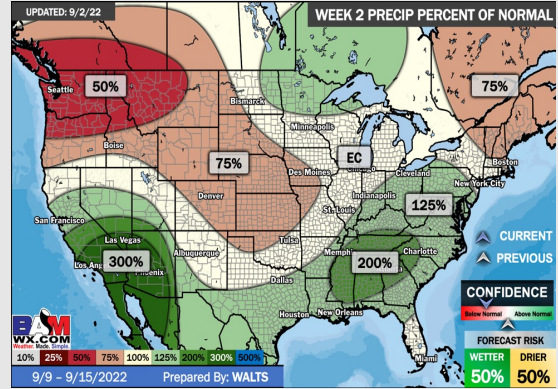
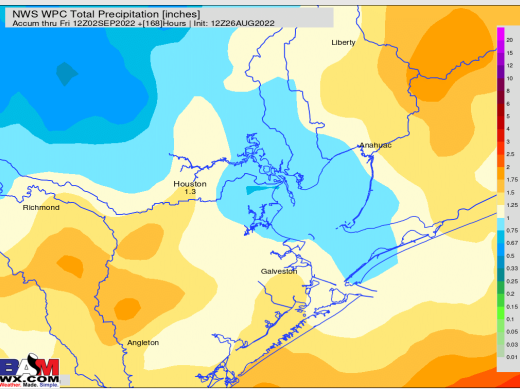
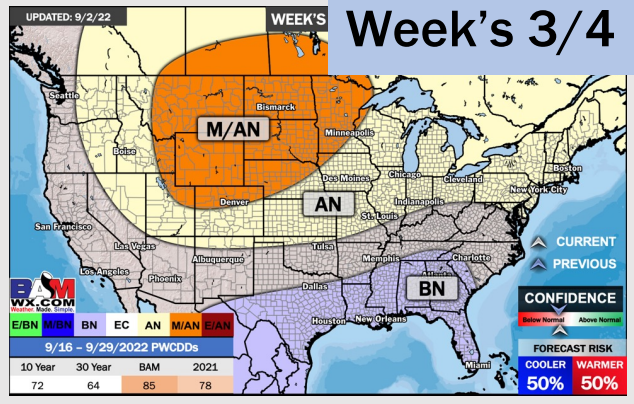
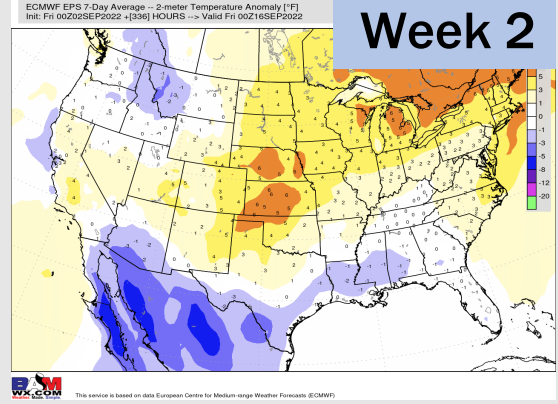
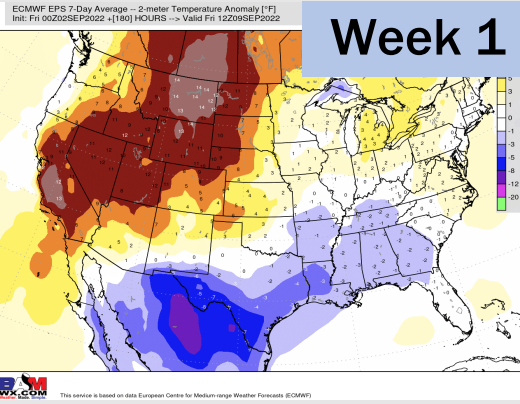


Wind Speed
11 AM CT



High Temps
Sunday

Houston Pilots: 9/2/22



- Temperatures expected to be below normal for the next week. Increased rainfall chances as storms move through the area the next several days.
- Week 2 likely features below normal temperatures and above normal precipitation.
- The weeks ¾ timeframe into mid September looks to feature below normal temperatures and above normal risks for precip.