

# Houston Pilots Forecast Package

Houston Pilots

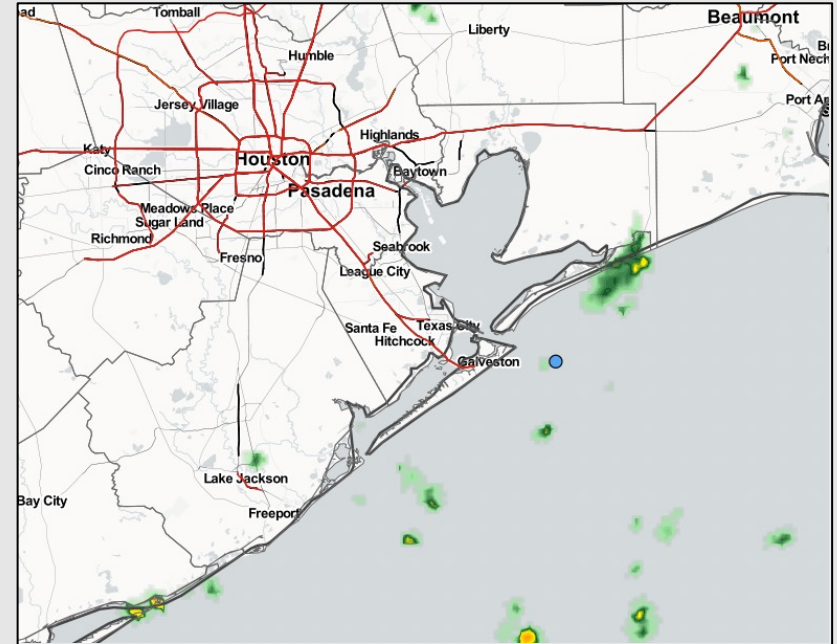
Updated: 4:45 AM CT

Monday, August 1, 2022

Forecaster: Kirk Hinz

## Weather Headlines

- A few minor chances for precipitation the next couple days (theme stays isolated / hit and miss).
- Flow will stay predominately out of the South over the next 2-3 days.
- Not favoring any tropical threats the next 7 days.
- Slightly above average temperatures look to continue into August.

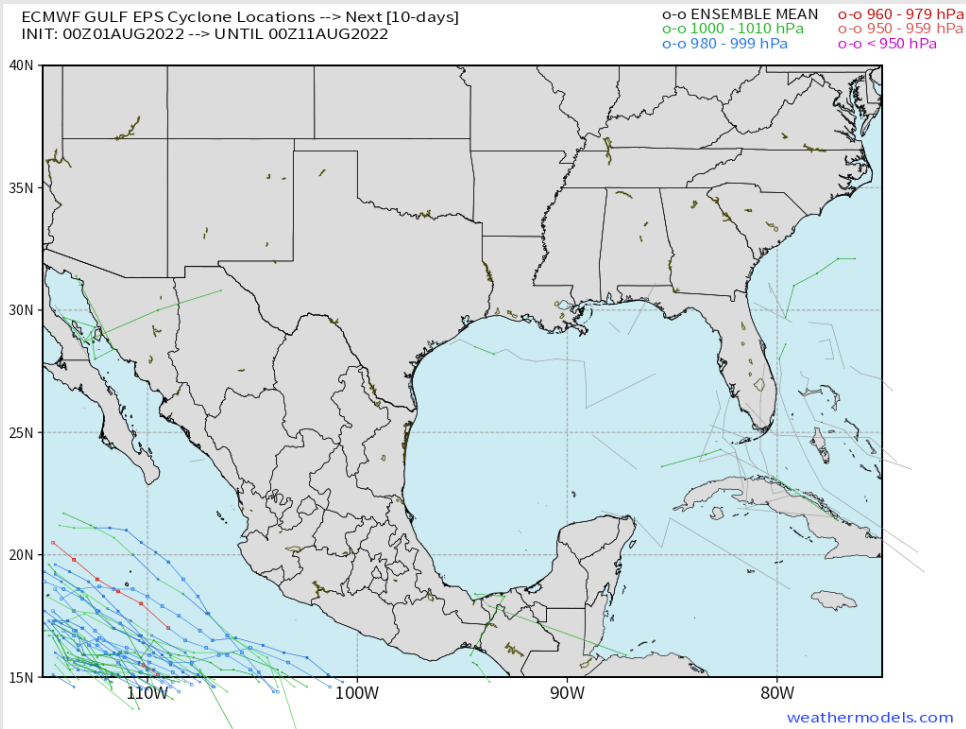


Radar/ NWS Alerts: 4:45 AM CT



As always, please do not hesitate to reach out to us with any forecast questions via the chat option on the Weather Porthole or our on-call number, **(317)-560-8122** press 1 for forecast questions.

## Various model tracks next 7 days



Not favoring any impactful tropical threats the next 7 days.

**Confidence**

Above Normal  Below Normal



# Houston Pilots Wind Report



**Confidence**

Above Normal

Below Normal

**Example**

Sustained wind 13 MPH  
Gusts 18 MPH  
Wind from the N

WS: 13  
G:18  
N

Time	08-01-2022 Mon 3am	08-01-2022 Mon 4am	08-01-2022 Mon 5am	08-01-2022 Mon 6am	08-01-2022 Mon 7am	08-01-2022 Mon 8am	08-01-2022 Mon 9am	08-01-2022 Mon 10am	08-01-2022 Mon 11am	08-01-2022 Mon 12pm	08-01-2022 Mon 1pm	08-01-2022 Mon 2pm	08-01-2022 Mon 3pm	08-01-2022 Mon 4pm	08-01-2022 Mon 5pm	08-01-2022 Mon 6pm	08-01-2022 Mon 7pm	08-01-2022 Mon 8pm	08-01-2022 Mon 9pm	08-01-2022 Mon 10pm	08-01-2022 Mon 11pm	08-02-2022 Tue 12am	08-02-2022 Tue 1am	08-02-2022 Tue 2am	08-02-2022 Tue 3am	08-02-2022 Tue 4am	08-02-2022 Tue 5am	08-02-2022 Tue 6am	08-02-2022 Tue 7am	08-02-2022 Tue 8am	08-02-2022 Tue 9am	08-02-2022 Tue 10am	08-02-2022 Tue 11am	08-02-2022 Tue 12pm	08-02-2022 Tue 1pm	08-02-2022 Tue 2pm						
Houston Pilots N - 610 Bridge	WS: 3 G:11 SSE	WS: 2 G:9 S	WS: 2 G:7 WSW	WS: 2 G:7 WNW	WS: 0 G:4 ESE	WS: 1 G:7 SSW	WS: 3 G:11 SSW	WS: 6 G:10 SSW	WS: 6 G:9 SSW	WS: 5 G:7 S	WS: 6 G:8 S	WS: 10 G:16 SE	WS: 8 G:14 NE	WS: 5 G:11 SSE	WS: 9 G:14 SSE	WS: 10 G:14 SSE	WS: 9 G:15 SSE	WS: 8 G:14 SSE	WS: 8 G:14 S	WS: 6 G:12 S	WS: 6 G:10 S	WS: 5 G:9 S	WS: 4 G:8 S	WS: 3 G:7 SSW	WS: 3 G:6 SSW	WS: 2 G:5 SSW	WS: 2 G:5 SSW	WS: 2 G:4 S	WS: 2 G:4 S	WS: 3 G:7 SSW	WS: 7 G:10 SSW	WS: 7 G:11 SSW	WS: 7 G:11 SSW	WS: 6 G:10 SSW	WS: 7 G:11 S	WS: 9 G:14 SSW						
Houston Pilots M - Kinder 1	WS: 3 G:11 SSE	WS: 3 G:9 S	WS: 2 G:7 WSW	WS: 2 G:6 WNW	WS: 0 G:4 SE	WS: 2 G:7 SSW	WS: 3 G:11 SSW	WS: 6 G:10 SSW	WS: 5 G:9 SSW	WS: 5 G:8 S	WS: 5 G:8 S	WS: 12 G:16 ESE	WS: 8 G:13 E	WS: 5 G:11 ESE	WS: 10 G:14 SSE	WS: 10 G:14 SSE	WS: 9 G:15 SSE	WS: 8 G:14 SSE	WS: 8 G:14 S	WS: 6 G:12 S	WS: 6 G:10 S	WS: 5 G:9 S	WS: 4 G:8 S	WS: 3 G:7 SSW	WS: 3 G:6 SSW	WS: 2 G:5 SSW	WS: 2 G:5 SSW	WS: 2 G:4 S	WS: 2 G:4 S	WS: 3 G:7 SSW	WS: 7 G:10 SSW	WS: 7 G:11 SSW	WS: 7 G:11 SSW	WS: 6 G:10 SSW	WS: 7 G:11 S	WS: 9 G:14 SSW						
Houston Pilots L - Greens Bayou	WS: 4 G:14 S	WS: 3 G:10 S	WS: 2 G:8 SW	WS: 2 G:6 W	WS: 0 G:5 SSW	WS: 2 G:8 SSW	WS: 5 G:11 SSW	WS: 5 G:10 SSW	WS: 4 G:8 S	WS: 6 G:8 S	WS: 8 G:10 SE	WS: 13 G:17 ESE	WS: 9 G:13 SW	WS: 5 G:12 E	WS: 10 G:14 SSE	WS: 10 G:14 SSE	WS: 8 G:14 SSE	WS: 8 G:14 S	WS: 7 G:12 S	WS: 6 G:10 S	WS: 4 G:8 S	WS: 4 G:8 S	WS: 3 G:7 SSW	WS: 3 G:6 SSW	WS: 2 G:5 SSW	WS: 2 G:5 SSW	WS: 2 G:4 S	WS: 2 G:4 S	WS: 3 G:7 SSW	WS: 7 G:10 SSW	WS: 7 G:11 SSW	WS: 7 G:11 SSW	WS: 6 G:10 SSW	WS: 7 G:11 S	WS: 9 G:14 S							
Houston Pilots K - Shell Crude	WS: 5 G:14 S	WS: 4 G:12 S	WS: 3 G:10 SSW	WS: 2 G:6 W	WS: 1 G:6 SSW	WS: 2 G:8 SSW	WS: 5 G:11 SSW	WS: 5 G:10 SSW	WS: 4 G:8 S	WS: 6 G:9 S	WS: 9 G:10 S	WS: 13 G:17 ESE	WS: 8 G:14 ESE	WS: 6 G:12 ESE	WS: 10 G:14 SSE	WS: 11 G:14 SSE	WS: 10 G:14 SSE	WS: 9 G:14 SSE	WS: 8 G:14 S	WS: 7 G:12 S	WS: 6 G:11 S	WS: 4 G:9 S	WS: 4 G:8 S	WS: 3 G:7 SSW	WS: 3 G:6 SSW	WS: 2 G:5 SSW	WS: 2 G:5 SSW	WS: 2 G:4 S	WS: 2 G:4 S	WS: 3 G:7 SSW	WS: 7 G:10 SSW	WS: 7 G:11 SSW	WS: 7 G:11 SSW	WS: 6 G:10 SSW	WS: 7 G:11 S	WS: 10 G:14 SSW						
Houston Pilots J - Lynchburg Ferries	WS: 5 G:15 S	WS: 4 G:14 S	WS: 3 G:11 SSW	WS: 2 G:7 W	WS: 2 G:7 W	WS: 3 G:9 SSW	WS: 4 G:11 SSW	WS: 5 G:10 SSW	WS: 4 G:9 S	WS: 4 G:9 S	WS: 10 G:16 SE	WS: 10 G:16 SE	WS: 7 G:13 SE	WS: 12 G:15 SSE	WS: 10 G:14 SSE	WS: 10 G:14 SSE	WS: 9 G:15 SSE	WS: 9 G:14 S	WS: 8 G:14 S	WS: 7 G:12 S	WS: 5 G:10 S	WS: 5 G:9 S	WS: 5 G:9 S	WS: 4 G:8 S	WS: 3 G:7 SSW	WS: 3 G:6 SSW	WS: 3 G:6 SSW	WS: 3 G:4 S	WS: 3 G:4 S	WS: 4 G:7 SSW	WS: 7 G:10 SSW	WS: 7 G:11 SSW	WS: 7 G:11 SSW	WS: 6 G:10 SSW	WS: 7 G:11 S	WS: 11 G:14 SSW						
Houston Pilots I - Exxon 3	WS: 6 G:15 S	WS: 5 G:15 S	WS: 5 G:14 SSW	WS: 3 G:10 WSW	WS: 4 G:13 SW	WS: 4 G:10 SSW	WS: 3 G:12 SSW	WS: 5 G:11 SSW	WS: 6 G:9 S	WS: 6 G:10 S	WS: 7 G:9 S	WS: 11 G:14 SE	WS: 13 G:19 SE	WS: 11 G:18 S	WS: 10 G:16 S	WS: 12 G:15 S	WS: 12 G:15 S	WS: 10 G:14 S	WS: 10 G:14 S	WS: 9 G:14 S	WS: 8 G:13 S	WS: 7 G:12 S	WS: 6 G:11 S	WS: 6 G:11 S	WS: 5 G:10 SSW	WS: 4 G:9 SSW	WS: 4 G:8 SSW	WS: 3 G:6 SSW	WS: 3 G:6 SSW	WS: 4 G:7 SSW	WS: 7 G:10 SSW	WS: 7 G:11 SSW	WS: 7 G:11 SSW	WS: 6 G:10 SSW	WS: 7 G:11 S	WS: 10 G:14 SSW						
Houston Pilots H - Morgans Point	WS: 9 G:16 S	WS: 9 G:16 S	WS: 8 G:15 SSW	WS: 6 G:12 SSW	WS: 9 G:18 SSW	WS: 6 G:13 SSW	WS: 4 G:12 SSW	WS: 6 G:11 SSW	WS: 6 G:10 SSW	WS: 7 G:10 S	WS: 8 G:10 S	WS: 15 G:17 ESE	WS: 18 G:18 SSE	WS: 13 G:17 SSE	WS: 16 G:18 SSE	WS: 13 G:16 S	WS: 12 G:15 S	WS: 11 G:15 S	WS: 11 G:14 S	WS: 10 G:14 S	WS: 9 G:14 S	WS: 8 G:14 S	WS: 7 G:13 S	WS: 6 G:12 S	WS: 6 G:11 S	WS: 5 G:10 SSW	WS: 6 G:12 SSW	WS: 6 G:11 S	WS: 5 G:9 S	WS: 4 G:9 S	WS: 5 G:9 S	WS: 7 G:10 S	WS: 8 G:11 S	WS: 8 G:11 S	WS: 8 G:10 S	WS: 9 G:11 S	WS: 11 G:13 S	WS: 13 G:15 S				
Houston Pilots G - 75/76	WS: 13 G:16 S	WS: 14 G:17 S	WS: 12 G:16 SSW	WS: 9 G:13 SSW	WS: 14 G:18 SSW	WS: 10 G:15 SSW	WS: 6 G:12 SSW	WS: 8 G:12 SSW	WS: 5 G:9 S	WS: 7 G:10 S	WS: 8 G:10 S	WS: 18 G:19 ESE	WS: 18 G:17 SSE	WS: 16 G:18 SSE	WS: 13 G:16 S	WS: 12 G:16 S	WS: 12 G:16 S	WS: 12 G:16 S	WS: 12 G:16 S	WS: 11 G:16 S	WS: 11 G:16 S	WS: 10 G:16 S	WS: 10 G:16 S	WS: 9 G:15 S	WS: 8 G:14 S	WS: 8 G:14 S	WS: 7 G:12 S	WS: 7 G:12 S	WS: 7 G:11 S	WS: 7 G:11 S	WS: 7 G:11 S	WS: 7 G:11 S	WS: 7 G:11 S	WS: 7 G:11 S	WS: 7 G:11 S	WS: 7 G:11 S	WS: 7 G:11 S	WS: 7 G:11 S	WS: 7 G:11 S			
Houston Pilots F - 63/64	WS: 13 G:16 S	WS: 15 G:17 S	WS: 12 G:16 S	WS: 10 G:14 SSW	WS: 14 G:18 SSW	WS: 10 G:15 SSW	WS: 7 G:12 SSW	WS: 7 G:12 SSW	WS: 5 G:9 S	WS: 5 G:9 S	WS: 10 G:16 SE	WS: 15 G:17 ESE	WS: 17 G:16 SSE	WS: 16 G:17 SSE	WS: 13 G:16 S	WS: 13 G:16 S	WS: 13 G:16 S	WS: 12 G:16 S	WS: 12 G:16 S	WS: 12 G:16 S	WS: 12 G:16 S	WS: 12 G:16 S	WS: 11 G:16 S	WS: 11 G:16 S	WS: 10 G:15 SSW	WS: 10 G:15 SSW	WS: 9 G:13 SSW	WS: 8 G:12 S	WS: 8 G:12 S	WS: 7 G:11 S	WS: 7 G:11 S	WS: 7 G:11 S	WS: 7 G:11 S	WS: 7 G:11 S	WS: 7 G:11 S	WS: 7 G:11 S	WS: 7 G:11 S	WS: 7 G:11 S	WS: 7 G:11 S	WS: 7 G:11 S		
Houston Pilots E - 51/52	WS: 14 G:16 S	WS: 15 G:17 S	WS: 13 G:16 S	WS: 12 G:15 S	WS: 13 G:17 S	WS: 8 G:14 S	WS: 7 G:12 S	WS: 7 G:12 S	WS: 6 G:9 S	WS: 6 G:9 S	WS: 12 G:16 SE	WS: 15 G:16 SSE	WS: 17 G:17 SSE	WS: 13 G:16 S	WS: 13 G:16 S	WS: 13 G:16 S	WS: 13 G:16 S	WS: 13 G:16 S	WS: 13 G:16 S	WS: 13 G:16 S	WS: 13 G:16 S	WS: 12 G:16 S	WS: 12 G:16 S	WS: 12 G:16 S	WS: 11 G:15 S	WS: 11 G:15 S	WS: 10 G:14 S	WS: 10 G:14 S	WS: 9 G:13 S	WS: 8 G:12 S	WS: 8 G:12 S	WS: 7 G:11 S	WS: 7 G:11 S	WS: 7 G:11 S	WS: 7 G:11 S	WS: 7 G:11 S	WS: 7 G:11 S	WS: 7 G:11 S	WS: 7 G:11 S	WS: 7 G:11 S	WS: 7 G:11 S	
Houston Pilots D - 37/38	WS: 14 G:16 S	WS: 13 G:16 S	WS: 12 G:15 S	WS: 11 G:16 S	WS: 12 G:17 S	WS: 7 G:14 S	WS: 9 G:13 SSW	WS: 10 G:12 S	WS: 7 G:10 S	WS: 8 G:9 S	WS: 10 G:11 S	WS: 13 G:14 S	WS: 14 G:15 S	WS: 16 G:17 S	WS: 17 G:18 S	WS: 13 G:15 S	WS: 13 G:15 S	WS: 13 G:15 S	WS: 13 G:15 S	WS: 13 G:15 S	WS: 13 G:15 S	WS: 13 G:15 S	WS: 13 G:15 S	WS: 13 G:15 S	WS: 12 G:16 S	WS: 12 G:16 S	WS: 12 G:16 S	WS: 11 G:15 S	WS: 11 G:15 S	WS: 10 G:14 S	WS: 9 G:12 S	WS: 9 G:12 S	WS: 9 G:12 S	WS: 9 G:12 S	WS: 9 G:12 S	WS: 9 G:12 S	WS: 9 G:12 S	WS: 9 G:12 S	WS: 9 G:12 S	WS: 9 G:12 S	WS: 9 G:12 S	
Houston Pilots C - 25/26	WS: 12 G:15 S	WS: 12 G:15 S	WS: 10 G:14 S	WS: 10 G:16 S	WS: 10 G:16 S	WS: 8 G:14 S	WS: 10 G:14 S	WS: 12 G:13 S	WS: 8 G:10 S	WS: 8 G:10 S	WS: 10 G:11 S	WS: 13 G:14 S	WS: 14 G:15 S	WS: 15 G:16 S	WS: 15 G:17 S	WS: 12 G:14 S	WS: 12 G:15 S	WS: 12 G:15 S	WS: 12 G:15 S	WS: 12 G:15 S	WS: 12 G:15 S	WS: 12 G:15 S	WS: 12 G:15 S	WS: 12 G:15 S	WS: 12 G:15 S	WS: 12 G:15 S	WS: 12 G:15 S	WS: 11 G:14 S	WS: 11 G:14 S	WS: 10 G:13 S	WS: 9 G:12 S	WS: 9 G:12 S	WS: 9 G:12 S	WS: 9 G:12 S	WS: 9 G:12 S	WS: 9 G:12 S	WS: 9 G:12 S	WS: 9 G:12 S	WS: 9 G:12 S	WS: 9 G:12 S	WS: 9 G:12 S	
Houston Pilots B - 11/12	WS: 13 G:16 S	WS: 11 G:15 S	WS: 11 G:14 S	WS: 13 G:17 S	WS: 12 G:16 S	WS: 11 G:15 S	WS: 12 G:14 S	WS: 12 G:14 S	WS: 10 G:11 S	WS: 10 G:11 S	WS: 11 G:12 S	WS: 13 G:14 S	WS: 13 G:15 S	WS: 14 G:16 S	WS: 12 G:14 S	WS: 12 G:14 S	WS: 12 G:14 S	WS: 12 G:14 S	WS: 12 G:14 S	WS: 12 G:14 S	WS: 12 G:14 S	WS: 12 G:14 S	WS: 12 G:14 S	WS: 12 G:14 S	WS: 12 G:14 S	WS: 12 G:14 S	WS: 12 G:14 S	WS: 12 G:14 S	WS: 11 G:13 S	WS: 11 G:13 S	WS: 10 G:12 S	WS: 9 G:11 S	WS: 9 G:11 S	WS: 9 G:11 S	WS: 9 G:11 S	WS: 9 G:11 S	WS: 9 G:11 S	WS: 9 G:11 S	WS: 9 G:11 S	WS: 9 G:11 S	WS: 9 G:11 S	WS: 9 G:11 S
Houston Pilots A - 1 & 2 Bravo	WS: 15 G:17 S	WS: 16 G:16 S	WS: 15 G:16 S	WS: 18 G:19 S	WS: 16 G:18 S	WS: 16 G:17 S	WS: 15 G:15 S	WS: 13 G:13 S	WS: 11 G:12 S	WS: 11 G:12 S	WS: 16 G:17 SE	WS: 11 G:13 SE	WS: 12 G:12 S	WS: 13 G:13 S	WS: 14 G:14 S	WS: 12 G:14 S	WS: 13 G:15 S	WS: 13 G:15 S	WS: 13 G:15 S	WS: 14 G:16 S	WS: 14 G:16 S	WS: 14 G:16 S	WS: 14 G:16 S	WS: 14 G:16 S	WS: 14 G:16 S	WS: 14 G:16 S	WS: 14 G:16 S	WS: 13 G:15 S	WS: 13 G:15 S	WS: 12 G:14 S	WS: 11 G:13 S	WS: 11 G:13 S	WS: 11 G:13 S	WS: 11 G:13 S	WS: 11 G:13 S	WS: 11 G:13 S	WS: 11 G:13 S	WS: 11 G:13 S	WS: 11 G:13 S	WS: 11 G:13 S	WS: 11 G:13 S	WS: 11 G:13 S

See slides below for official thoughts on winds.

# Houston Pilots: Mon. 8/1/2022



## Forecast Discussion

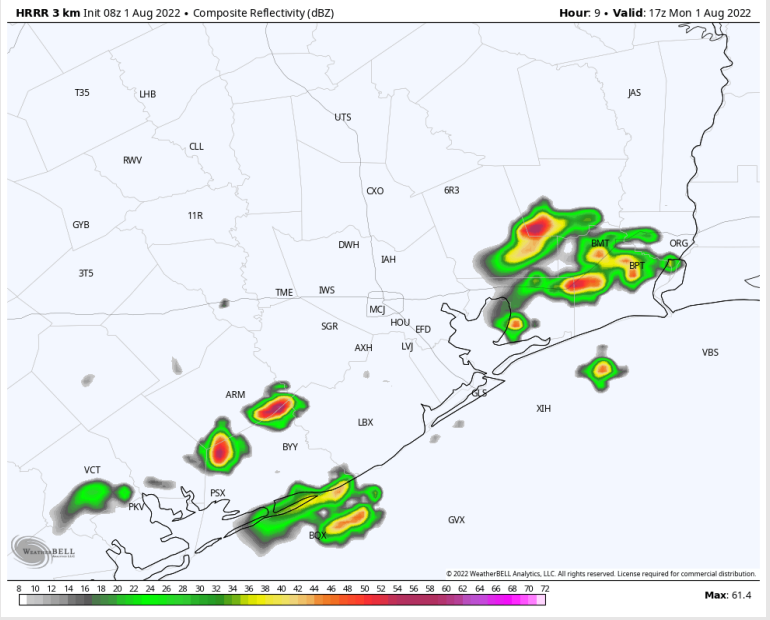
**Precip:** 40/50% coverage of scattered showers/thunderstorms from 6AM to 2PM today. Chances then decrease to 40% between 2PM-7PM before decreasing to 10% for the rest of the evening and overnight. Lightning and locally heavy downpours possible under any of these stronger storms.

**Wind:** Sustained winds look to be 10-15 MPH out of the South throughout the AM with winds north of Morgan's Point a bit calmer at 5-10 MPH. After 12/1 PM, sustained winds veer from the SSW 10-15 MPH with occasional 20 MPH gusts.

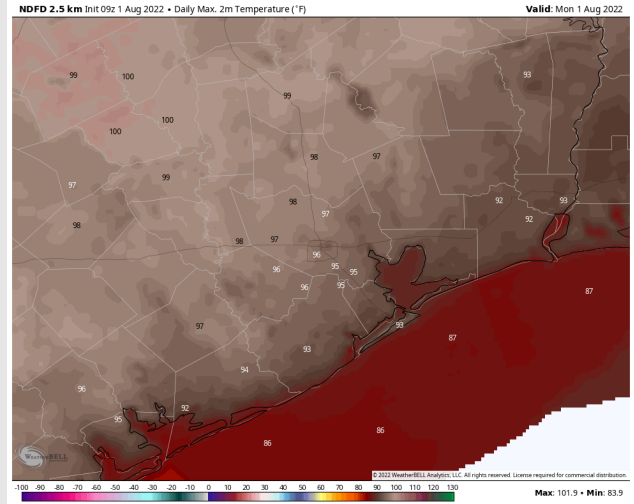
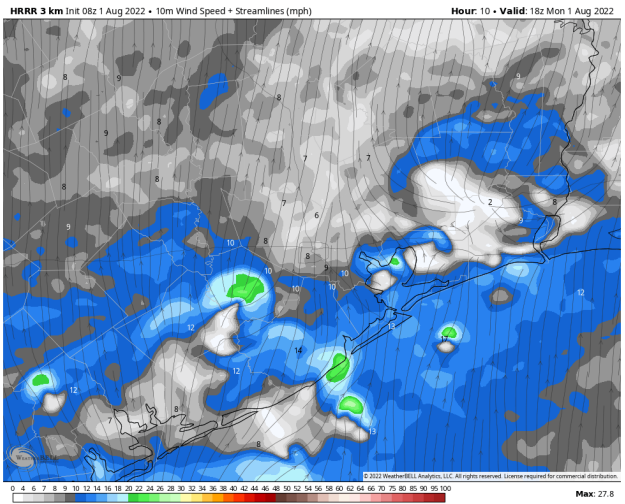
**Temps:** High temps today in the mid to upper 90s F with temps near the boarding station closer to upper 80s F.

**Visibility:** Not anticipating fog concerns at this time, however visibility may be reduced under stronger storms.

## Precip Forecast: 12 PM CT



Wind Speed  
1 PM CT



High Temps  
Today

# Houston Pilots: Tue. 8/2/2022

## Forecast Discussion

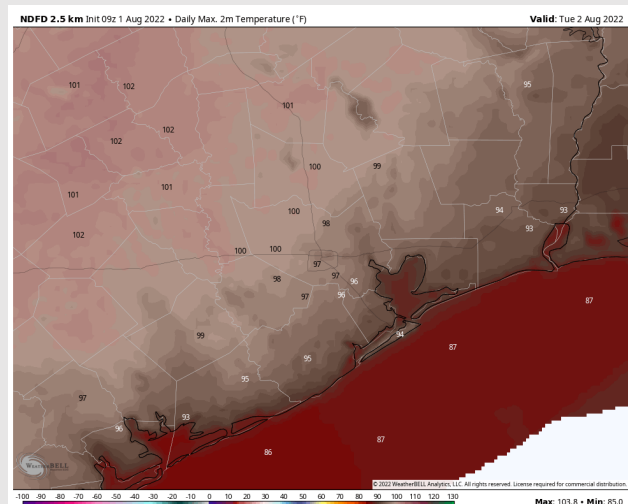
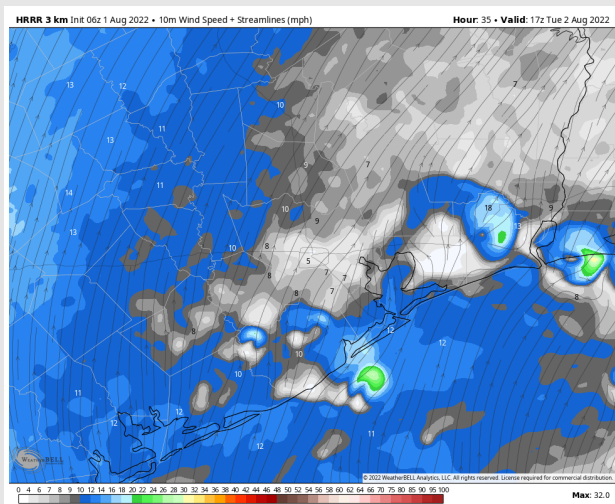
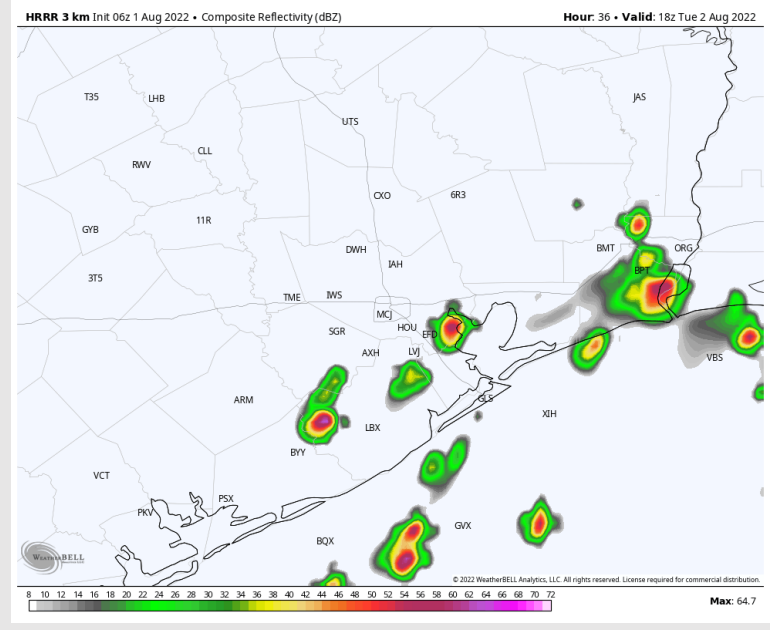
**Precip:** Expecting a 20/30% chance of scattered showers/thunderstorms from 6-10AM Tuesday morning, increasing to 40/50% coverage from 10AM – 5PM. Lightning and locally heavy downpours possible under stronger storms.

**Wind:** Sustained winds Tuesday morning will be 8-13 MPH out of the SSW with winds north of Morgan's Point calmer. Winds slowly increase after 12/1 PM to 10-15 MPH mid afternoon to evening veering from the South. Gusts of 20-25 MPH possible under stronger storms.

**Temps:** High temps Tuesday in the mid to upper 90s F for most stations. Temps near boarding station closer to the upper 80s F.

**Visibility:** Not anticipating fog concerns at the time, however, visibility may be reduced under strongest storms.

## Precip Forecast: 1 PM CT



Wind Speed  
12 PM CT

High Temps  
Tuesday

# Houston Pilots: Wed. 8/3/2022



## Forecast Discussion

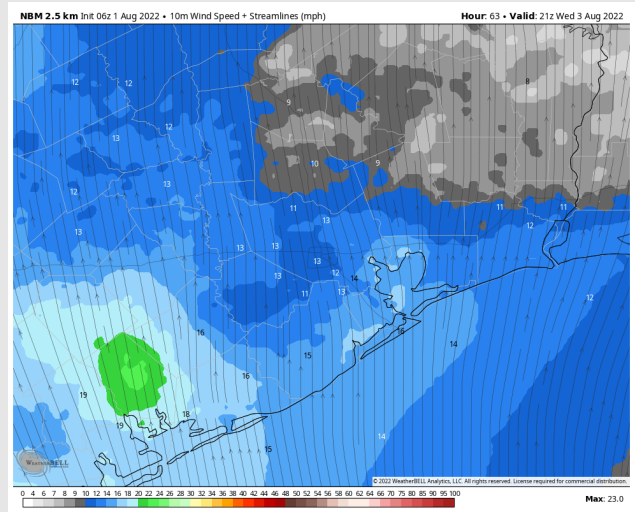
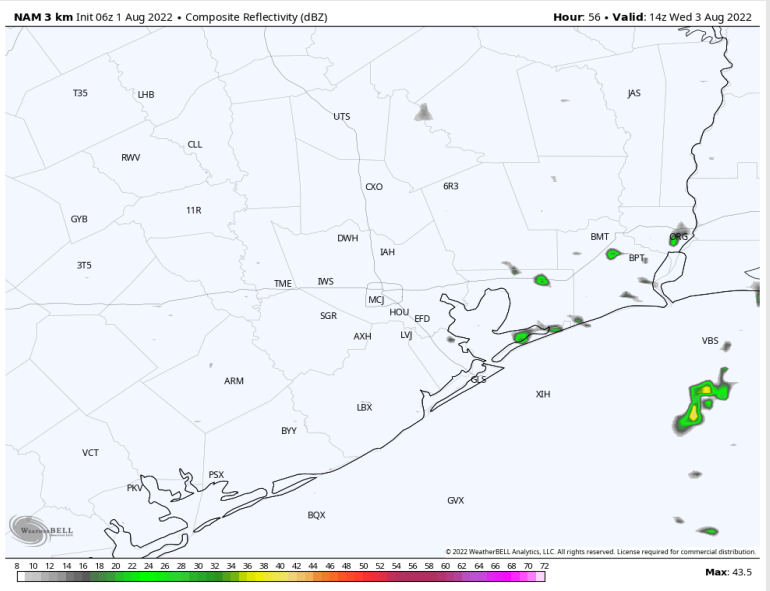
**Precip:** Chances for rain Wednesday, at this distance, looks slightly lower vs Monday/Tuesday; right now favoring a ~10/20% chance from 6AM – 3PM.

**Wind:** Sustained winds 10-15 MPH from the SSW throughout the day Wednesday with gusts of 25 MPH possible. Winds north of Morgan's Point calmer in the AM between 8-13 MPH.

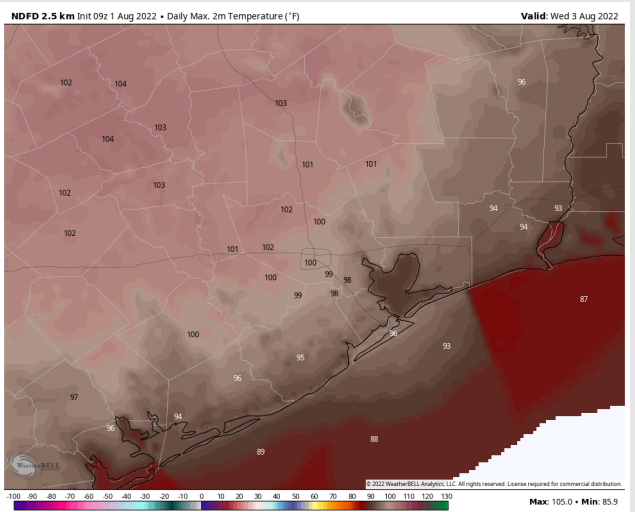
**Temps:** High temps Wednesday in the upper 90s F for most stations. Highs in the upper 80s F near boarding station.

**Visibility:** Not anticipating fog concerns at this time.

## Precip Forecast: 10 AM CT

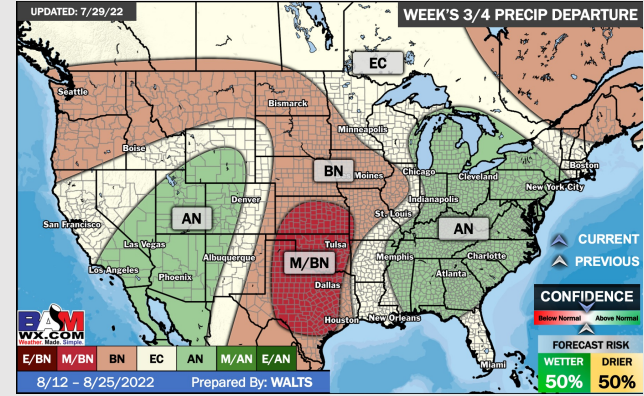
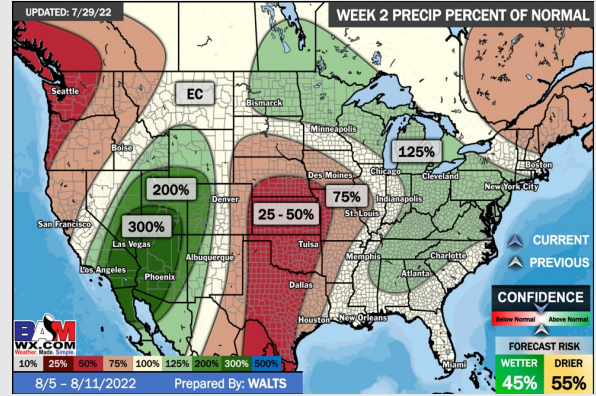
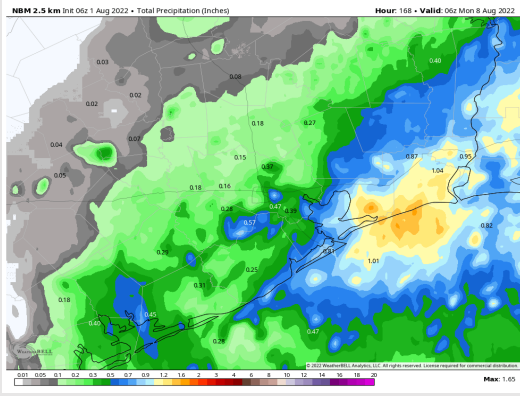
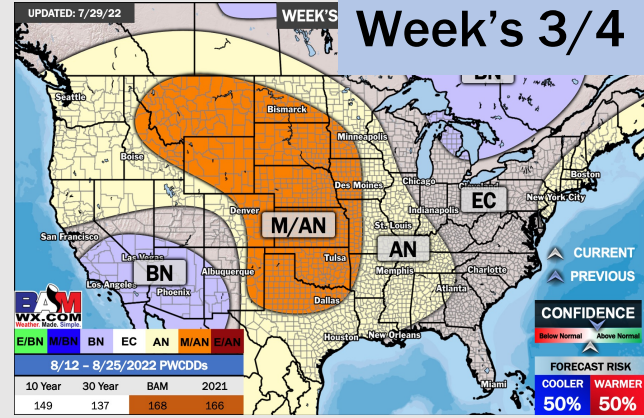
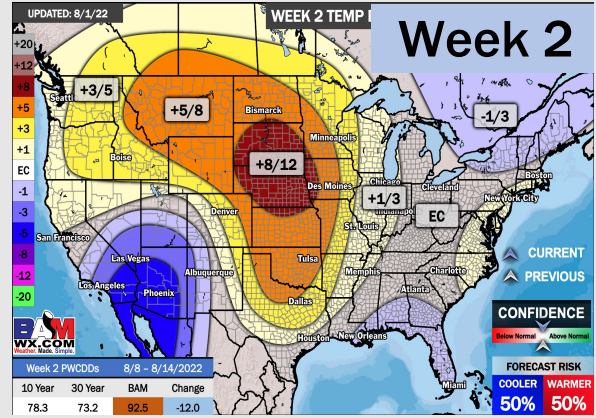
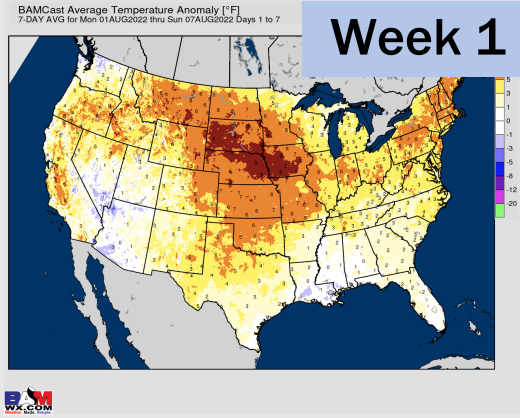


Wind Speed  
4 PM CT



High Temps  
Wednesday

# Houston Pilots: 8/1/22



- Temperatures expected to be slightly above normal this week. Daily, scattered chances for precipitation will be possible over the next few days, but not widespread heavy threats at this time...more frequent precipitation chances look to increase Friday into the weekend.
- Week 2 likely features normal risks for temperatures and below normal precipitation risks.
- The weeks 3/4 timeframe into the first couple weeks of August looks to feature above normal temperatures and below normal risks for precip.