

Houston Pilots Forecast Package

Houston Pilots

Updated: 1:00 PM CT

Saturday, August 27, 2022

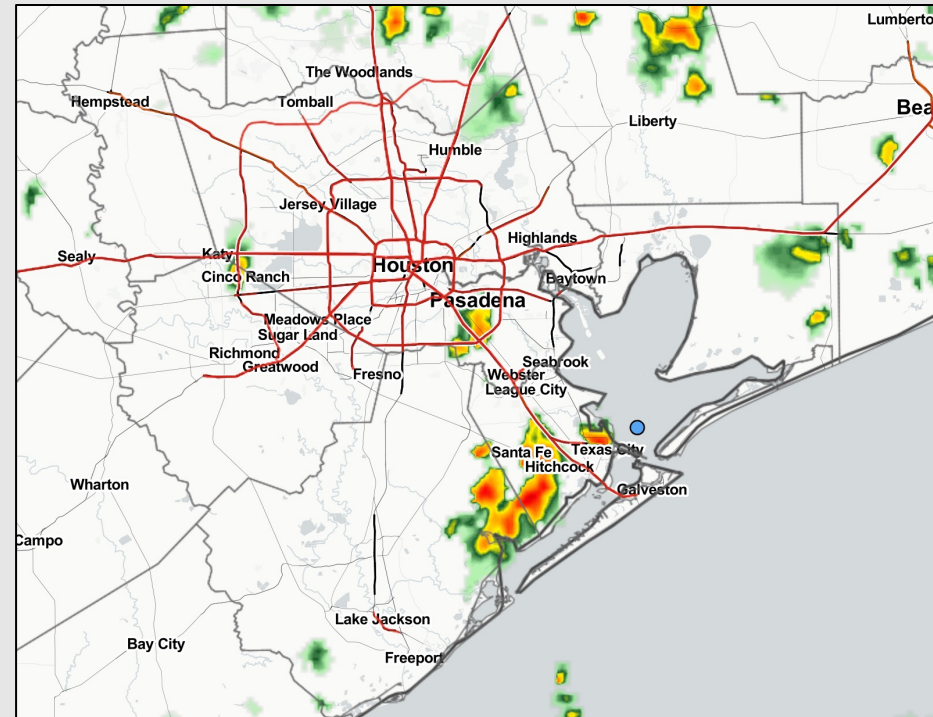
Forecaster: John Kemper

Weather Headlines

➤ Hit and miss shower/storm activity will continue the next several days. A stronger storm with lightning and wind gusts of 20-30 MPH will be the possible.

➤ More tropical details on slides below as there are some limited risks we are monitoring.

➤ Active pattern looks to continue into the upcoming week with daily chances of rain. In this pattern, lower confidence in exact timing and magnitude.

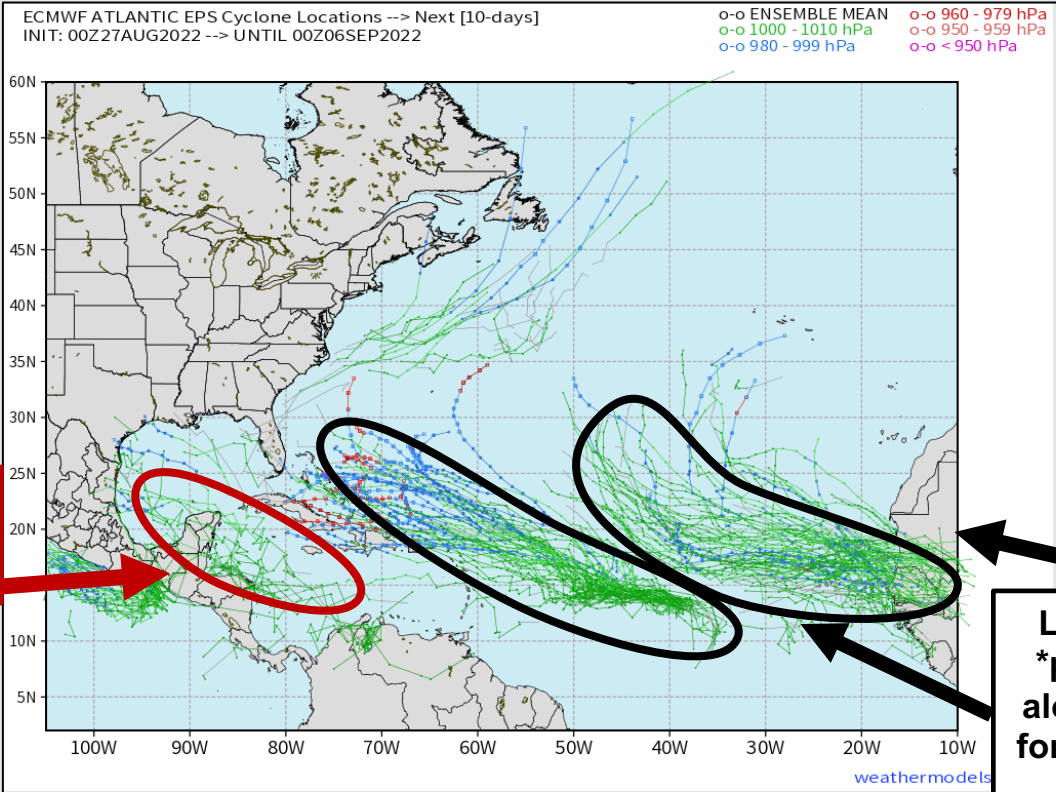


Radar/ NWS Alerts: 1:00 PM CT



As always, please do not hesitate to reach out to us with any forecast questions via the chat option on the Weather Porthole or our on-call number, **(317)-560-8122** press 1 for forecast questions.

European Data Tropical Tracks Next 10 Days



Lower threat overall, but will still continue to be monitored.

Likely out to sea with any *potential* impact coming along the E Coast. Concern for any Gulf impacts are low until any development occurs.

No direct tropical threat for Houston expected over the next 7 days, however continuing to monitor increasing activity in the Atlantic. While a limited window exists in the Caribbean for development of a tropical system, favoring activity to remain south of Houston area at this time due to upper level winds.

Confidence

Above Normal Below Normal

Houston Pilots Wind Report



Time	08-27-2022 Sat 10am	08-27-2022 Sat 11am	08-27-2022 Sat 12pm	08-27-2022 Sat 1pm	08-27-2022 Sat 2pm	08-27-2022 Sat 3pm	08-27-2022 Sat 4pm	08-27-2022 Sat 5pm	08-27-2022 Sat 6pm	08-27-2022 Sat 7pm	08-27-2022 Sat 8pm	08-27-2022 Sat 9pm	08-27-2022 Sat 10pm	08-27-2022 Sat 11pm	08-28-2022 Sun 12am	08-28-2022 Sun 1am	08-28-2022 Sun 2am	08-28-2022 Sun 3am	08-28-2022 Sun 4am	08-28-2022 Sun 5am	08-28-2022 Sun 6am	08-28-2022 Sun 7am	08-28-2022 Sun 8am	08-28-2022 Sun 9am	08-28-2022 Sun 10am	08-28-2022 Sun 11am	08-28-2022 Sun 12pm	08-28-2022 Sun 1pm	08-28-2022 Sun 2pm	08-28-2022 Sun 3pm	08-28-2022 Sun 4pm	08-28-2022 Sun 5pm	08-28-2022 Sun 6pm	08-28-2022 Sun 7pm	08-28-2022 Sun 8pm	08-28-2022 Sun 9pm	
Houston Pilots N - 610 Bridge	WS: 3 G:6 WSW	WS: 3 G:6 WSW	WS: 3 G:4 SW	WS: 15 G:22 SSE	WS: 5 G:6 SE	WS: 6 G:7 SSE	WS: 5 G:6 S	WS: 5 G:5 S	WS: 4 G:5 S	WS: 6 G:8 S	WS: 11 G:18 SSE	WS: 5 G:14 ESE	WS: 4 G:15 SSE	WS: 2 G:11 SSE	WS: 2 G:12 SE	WS: 2 G:13 S	WS: 3 G:6 S	WS: 3 G:4 SSE	WS: 2 G:3 SSE	WS: 2 G:3 SSE	WS: 2 G:3 SSE	WS: 2 G:3 SE	WS: 2 G:3 SE	WS: 3 G:5 SE	WS: 6 G:8 SSE	WS: 7 G:10 SSE	WS: 7 G:11 SSE	WS: 8 G:11 SSE	WS: 9 G:13 SSE	WS: 9 G:15 SSE	WS: 9 G:16 SSE	WS: 10 G:15 SSE	WS: 10 G:16 SE	WS: 10 G:16 SSE	WS: 10 G:13 SSE	WS: 8 G:12 SSE	WS: 7 G:12 SSE
Houston Pilots M - Kinder 1	WS: 3 G:6 WSW	WS: 3 G:6 WSW	WS: 3 G:4 SSW	WS: 15 G:23 S	WS: 4 G:6 SE	WS: 6 G:8 S	WS: 6 G:6 S	WS: 4 G:5 SSE	WS: 6 G:8 SSE	WS: 11 G:18 SSE	WS: 4 G:13 SE	WS: 5 G:16 SSE	WS: 2 G:12 S	WS: 2 G:12 SE	WS: 2 G:13 SSE	WS: 3 G:6 S	WS: 2 G:4 SSE	WS: 2 G:3 SSE	WS: 2 G:3 SSE	WS: 2 G:3 SSE	WS: 2 G:3 SE	WS: 2 G:3 SE	WS: 3 G:5 SE	WS: 6 G:8 SSE	WS: 7 G:10 SSE	WS: 7 G:11 SSE	WS: 8 G:11 SSE	WS: 9 G:13 SSE	WS: 9 G:15 SSE	WS: 10 G:15 SSE	WS: 10 G:16 SE	WS: 11 G:16 SE	WS: 11 G:16 SSE	WS: 10 G:16 SSE	WS: 8 G:13 SSE	WS: 7 G:12 SSE	WS: 7 G:12 SSE
Houston Pilots L - Greens Bayou	WS: 3 G:6 WSW	WS: 3 G:5 SW	WS: 3 G:5 S	WS: 12 G:19 S	WS: 3 G:6 SSE	WS: 5 G:7 SSE	WS: 5 G:5 SSE	WS: 4 G:5 SSE	WS: 7 G:9 SSE	WS: 9 G:17 SSE	WS: 4 G:11 SSW	WS: 5 G:16 SSE	WS: 2 G:12 SW	WS: 2 G:12 SE	WS: 2 G:11 SE	WS: 3 G:5 S	WS: 2 G:4 SSE	WS: 2 G:3 SSE	WS: 2 G:3 SSE	WS: 2 G:3 SSE	WS: 2 G:3 SE	WS: 2 G:3 SE	WS: 3 G:5 SE	WS: 6 G:8 SSE	WS: 7 G:10 SSE	WS: 7 G:11 SSE	WS: 8 G:11 SSE	WS: 9 G:13 SSE	WS: 9 G:15 SSE	WS: 10 G:15 SSE	WS: 10 G:16 SE	WS: 11 G:16 SE	WS: 11 G:17 SE	WS: 10 G:16 SSE	WS: 8 G:13 SSE	WS: 8 G:12 SSE	WS: 7 G:12 SSE
Houston Pilots K - Shell Crude	WS: 3 G:6 WSW	WS: 2 G:5 WSW	WS: 5 G:7 SSE	WS: 10 G:17 SSW	WS: 6 G:6 S	WS: 5 G:7 SSW	WS: 5 G:6 SSW	WS: 4 G:5 SSE	WS: 7 G:10 SSE	WS: 10 G:18 SSE	WS: 4 G:13 SSW	WS: 6 G:17 SSE	WS: 3 G:14 SSW	WS: 2 G:13 SSE	WS: 2 G:12 SSE	WS: 3 G:6 S	WS: 3 G:5 S	WS: 2 G:4 S	WS: 2 G:3 SSE	WS: 2 G:3 SSE	WS: 2 G:3 SSE	WS: 2 G:3 SE	WS: 3 G:5 SE	WS: 6 G:8 SSE	WS: 7 G:10 SSE	WS: 8 G:11 SSE	WS: 9 G:12 SSE	WS: 10 G:13 SSE	WS: 10 G:15 SSE	WS: 11 G:15 SSE	WS: 11 G:16 SE	WS: 12 G:16 SSE	WS: 11 G:16 SSE	WS: 8 G:13 SSE	WS: 8 G:13 SSE	WS: 7 G:12 SSE	WS: 7 G:12 SSE
Houston Pilots J - Lynchburg Ferries	WS: 3 G:6 WSW	WS: 3 G:5 SSW	WS: 5 G:7 SSE	WS: 11 G:21 S	WS: 4 G:7 SW	WS: 5 G:7 SSE	WS: 6 G:6 SSW	WS: 5 G:6 SE	WS: 6 G:6 SE	WS: 11 G:18 SSE	WS: 6 G:13 SSW	WS: 5 G:16 SSE	WS: 3 G:14 SSW	WS: 3 G:13 SSE	WS: 2 G:12 SSE	WS: 3 G:6 S	WS: 3 G:5 S	WS: 2 G:4 S	WS: 2 G:3 SSE	WS: 2 G:3 SSE	WS: 2 G:3 SSE	WS: 2 G:3 SE	WS: 3 G:6 SE	WS: 6 G:8 SSE	WS: 7 G:10 SSE	WS: 8 G:11 SSE	WS: 9 G:12 SSE	WS: 10 G:13 SSE	WS: 10 G:15 SSE	WS: 11 G:16 SSE	WS: 12 G:16 SSE	WS: 12 G:17 SSE	WS: 11 G:16 SSE	WS: 8 G:13 SSE	WS: 8 G:13 SSE	WS: 7 G:12 SSE	WS: 7 G:12 SSE
Houston Pilots I - Exxon 3	WS: 3 G:6 W	WS: 3 G:5 SSE	WS: 7 G:8 SSE	WS: 7 G:9 S	WS: 4 G:7 SW	WS: 6 G:7 SSE	WS: 7 G:8 SSE	WS: 7 G:9 SE	WS: 11 G:15 SSE	WS: 11 G:18 SSE	WS: 7 G:15 S	WS: 8 G:17 S	WS: 5 G:15 S	WS: 4 G:14 S	WS: 3 G:14 SSE	WS: 4 G:7 S	WS: 4 G:6 S	WS: 3 G:6 S	WS: 3 G:5 SSE	WS: 3 G:4 SSE	WS: 3 G:4 SSE	WS: 3 G:5 SSE	WS: 3 G:5 SSE	WS: 6 G:9 SSE	WS: 6 G:9 SSE	WS: 7 G:10 SSE	WS: 8 G:11 SSE	WS: 9 G:12 SSE	WS: 10 G:14 SSE	WS: 11 G:15 SSE	WS: 11 G:15 SSE	WS: 12 G:16 SSE	WS: 12 G:17 SSE	WS: 12 G:16 SSE	WS: 11 G:16 SSE	WS: 9 G:13 SSE	WS: 8 G:13 SSE
Houston Pilots H - Morgans Point	WS: 2 G:5 W	WS: 5 G:6 SSE	WS: 8 G:8 SSE	WS: 8 G:10 S	WS: 6 G:7 SSW	WS: 7 G:8 SSE	WS: 8 G:10 SSE	WS: 9 G:11 SE	WS: 13 G:17 SSE	WS: 13 G:19 SSE	WS: 11 G:18 S	WS: 11 G:18 S	WS: 8 G:16 SSW	WS: 7 G:15 S	WS: 7 G:16 S	WS: 6 G:9 S	WS: 6 G:8 S	WS: 5 G:8 S	WS: 5 G:7 S	WS: 5 G:6 SSE	WS: 4 G:6 SSE	WS: 4 G:7 SSE	WS: 5 G:8 SSE	WS: 7 G:9 SSE	WS: 8 G:10 SSE	WS: 8 G:11 SSE	WS: 9 G:12 SSE	WS: 10 G:14 SSE	WS: 11 G:15 SSE	WS: 11 G:15 SSE	WS: 12 G:16 SSE	WS: 12 G:17 SSE	WS: 12 G:16 SSE	WS: 11 G:16 SSE	WS: 9 G:14 SSE	WS: 9 G:14 SSE	
Houston Pilots G - 75/76	WS: 1 G:5 WNW	WS: 6 G:6 SE	WS: 7 G:7 SSE	WS: 9 G:10 SSE	WS: 9 G:10 SSE	WS: 9 G:10 SSE	WS: 10 G:11 SSE	WS: 10 G:11 SSE	WS: 16 G:18 SSE	WS: 17 G:20 SSE	WS: 16 G:20 S	WS: 14 G:19 S	WS: 11 G:17 S	WS: 11 G:16 S	WS: 11 G:17 S	WS: 8 G:11 S	WS: 7 G:11 S	WS: 7 G:10 S	WS: 6 G:9 S	WS: 6 G:9 S	WS: 6 G:9 SSE	WS: 6 G:10 SSE	WS: 7 G:10 SSE	WS: 8 G:11 SSE	WS: 9 G:12 SSE	WS: 10 G:13 SSE	WS: 11 G:14 SSE	WS: 11 G:15 SSE	WS: 12 G:16 SSE	WS: 12 G:17 SSE	WS: 12 G:16 SSE	WS: 11 G:16 SSE	WS: 12 G:16 SSE	WS: 11 G:16 SSE	WS: 11 G:16 SSE	WS: 11 G:16 SSE	
Houston Pilots F - 63/64	WS: 2 G:5 NW	WS: 5 G:5 SSE	WS: 6 G:6 SSE	WS: 9 G:10 S	WS: 10 G:10 S	WS: 10 G:11 SSE	WS: 10 G:11 SSE	WS: 10 G:11 SSE	WS: 16 G:17 SSE	WS: 17 G:20 SSE	WS: 16 G:20 S	WS: 14 G:19 S	WS: 11 G:17 S	WS: 11 G:16 S	WS: 11 G:16 S	WS: 9 G:12 S	WS: 8 G:11 S	WS: 8 G:10 S	WS: 7 G:10 S	WS: 7 G:10 S	WS: 7 G:10 SSE	WS: 7 G:10 SSE	WS: 8 G:11 SSE	WS: 8 G:11 SSE	WS: 8 G:11 SSE	WS: 8 G:11 SSE	WS: 8 G:12 SSE	WS: 9 G:12 SSE	WS: 10 G:13 SSE	WS: 11 G:14 SSE	WS: 11 G:15 SSE	WS: 12 G:16 SSE	WS: 12 G:16 SSE	WS: 12 G:16 SSE	WS: 11 G:16 SSE	WS: 11 G:16 SSE	WS: 11 G:16 SSE
Houston Pilots E - 51/52	WS: 1 G:4 WNW	WS: 4 G:5 SSE	WS: 5 G:6 SSE	WS: 7 G:8 SSE	WS: 8 G:8 S	WS: 10 G:11 S	WS: 10 G:12 S	WS: 11 G:12 S	WS: 15 G:16 SSE	WS: 16 G:19 SSE	WS: 14 G:20 S	WS: 12 G:17 S	WS: 11 G:17 S	WS: 11 G:16 S	WS: 11 G:16 S	WS: 10 G:13 S	WS: 9 G:12 S	WS: 8 G:11 S	WS: 8 G:10 S	WS: 7 G:10 S	WS: 7 G:10 SSE	WS: 7 G:10 SSE	WS: 8 G:11 SSE	WS: 8 G:11 SSE	WS: 8 G:11 SSE	WS: 8 G:12 SSE	WS: 9 G:12 SSE	WS: 10 G:13 SSE	WS: 11 G:14 SSE	WS: 11 G:15 SSE	WS: 12 G:16 SSE	WS: 12 G:16 SSE	WS: 13 G:16 SSE	WS: 12 G:16 SSE	WS: 12 G:16 SSE	WS: 12 G:16 SSE	WS: 12 G:16 SSE
Houston Pilots D - 37/38	WS: 1 G:4 W	WS: 4 G:5 SSE	WS: 4 G:6 S	WS: 6 G:7 SSW	WS: 7 G:7 SSW	WS: 9 G:10 SSW	WS: 12 G:14 S	WS: 12 G:14 S	WS: 13 G:15 SSE	WS: 15 G:17 SSE	WS: 15 G:19 S	WS: 13 G:19 S	WS: 11 G:16 S	WS: 11 G:17 S	WS: 12 G:18 S	WS: 10 G:13 S	WS: 9 G:12 S	WS: 9 G:11 S	WS: 8 G:11 S	WS: 8 G:10 S	WS: 8 G:10 SSE	WS: 8 G:11 SSE	WS: 8 G:11 SSE	WS: 8 G:11 SSE	WS: 9 G:12 SSE	WS: 9 G:12 SSE	WS: 9 G:12 SSE	WS: 10 G:13 SSE	WS: 11 G:14 SSE	WS: 12 G:15 SSE	WS: 12 G:16 SSE	WS: 12 G:16 SSE	WS: 12 G:16 SSE	WS: 12 G:16 SSE	WS: 12 G:16 SSE	WS: 12 G:16 SSE	WS: 12 G:16 SSE
Houston Pilots C - 25/26	WS: 2 G:5 WNW	WS: 3 G:5 SSW	WS: 5 G:6 S	WS: 6 G:7 S	WS: 7 G:8 SSW	WS: 8 G:9 SSW	WS: 12 G:14 SSW	WS: 11 G:14 SSE	WS: 12 G:14 SSE	WS: 13 G:17 SSE	WS: 13 G:18 S	WS: 10 G:16 S	WS: 10 G:16 S	WS: 10 G:16 S	WS: 10 G:16 S	WS: 9 G:12 S	WS: 9 G:11 S	WS: 8 G:10 S	WS: 8 G:10 SSE	WS: 8 G:10 SSE	WS: 8 G:11 SSE	WS: 8 G:11 SSE	WS: 8 G:11 SSE	WS: 8 G:12 SSE	WS: 9 G:12 SSE	WS: 9 G:12 SSE	WS: 10 G:13 SSE	WS: 11 G:14 SSE	WS: 11 G:15 SSE	WS: 12 G:16 SSE	WS: 12 G:16 SSE	WS: 12 G:16 SSE	WS: 12 G:16 SSE	WS: 11 G:16 SSE	WS: 11 G:16 SSE	WS: 12 G:16 SSE	WS: 12 G:16 SSE
Houston Pilots B - 11/12	WS: 3 G:5 W	WS: 4 G:5 S	WS: 6 G:7 S	WS: 7 G:8 SSE	WS: 9 G:9 SSW	WS: 9 G:10 SSW	WS: 11 G:14 SSW	WS: 11 G:13 S	WS: 12 G:14 SSE	WS: 13 G:16 SSE	WS: 12 G:16 S	WS: 11 G:16 S	WS: 11 G:16 S	WS: 12 G:16 S	WS: 12 G:16 S	WS: 10 G:13 S	WS: 9 G:12 S	WS: 8 G:11 S	WS: 8 G:11 S	WS: 8 G:11 SSE	WS: 8 G:11 SSE	WS: 8 G:11 SSE	WS: 8 G:12 SSE	WS: 9 G:12 SSE	WS: 9 G:12 SSE	WS: 9 G:12 SSE	WS: 10 G:13 SSE	WS: 11 G:14 SSE	WS: 11 G:15 SSE	WS: 12 G:16 SSE	WS: 12 G:16 SSE	WS: 12 G:16 SSE	WS: 12 G:16 SSE	WS: 11 G:16 SSE	WS: 11 G:16 SSE	WS: 12 G:16 SSE	WS: 12 G:16 SSE
Houston Pilots A - 1 & 2 Bravo	WS: 7 G:8 W	WS: 11 G:11 SSE	WS: 6 G:7 S	WS: 3 G:5 SSE	WS: 8 G:10 SSW	WS: 10 G:10 SSW	WS: 10 G:13 SSW	WS: 11 G:12 SSE	WS: 13 G:14 SSE	WS: 13 G:15 S	WS: 13 G:14 S	WS: 14 G:17 S	WS: 14 G:16 S	WS: 14 G:17 S	WS: 14 G:18 S	WS: 11 G:14 S	WS: 10 G:13 S	WS: 10 G:12 S	WS: 10 G:12 S	WS: 9 G:11 S	WS: 9 G:12 SSE	WS: 9 G:12 SSE	WS: 9 G:12 SSE	WS: 9 G:12 SSE	WS: 9 G:12 SSE	WS: 10 G:13 SSE	WS: 10 G:12 SSE	WS: 11 G:13 SSE	WS: 11 G:14 SSE	WS: 12 G:15 SSE	WS: 12 G:16 SSE	WS: 13 G:15 SSE	WS: 13 G:15 SSE	WS: 12 G:16 SSE	WS: 12 G:16 SSE	WS: 14 G:16 SSE	WS: 14 G:17 SSE

See slides below for official thoughts on winds.

Houston Pilots: sat. 8/27/2022



Forecast Discussion

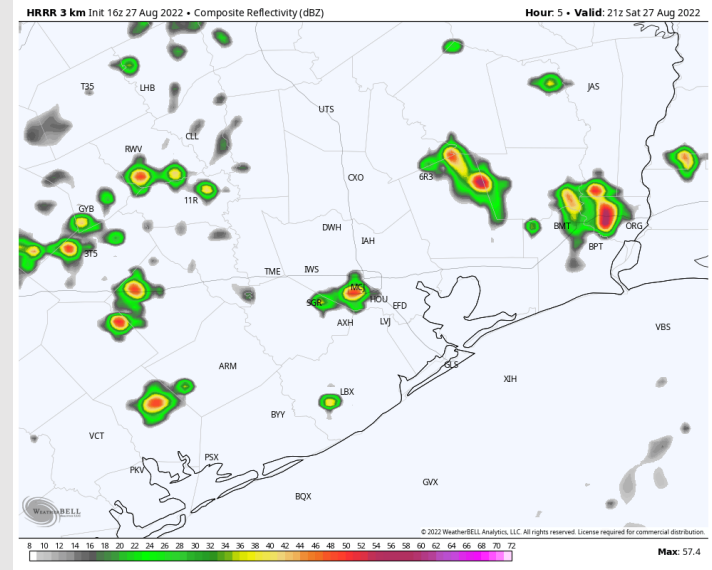
Precip: Anticipating 30%-50% chances of scattered showers and storms from 1PM-CT through 7PM-CT for all stations. Brief periods of moderate to heavy rain are likely with all storms.

Wind: Sustained winds of 10-15MPH out of the S/SSE likely to continue through the late evening. An occasional gust of up to 20-25MPH will be possible in all storms.

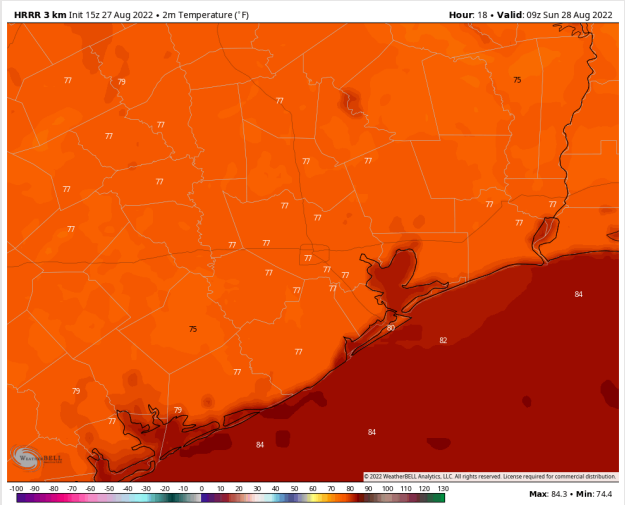
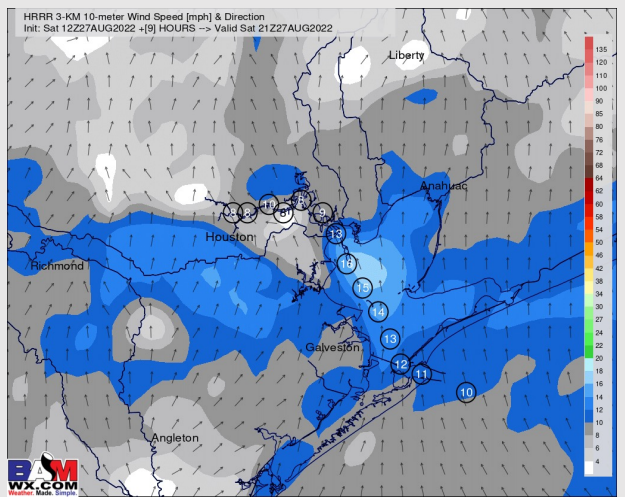
Temps: High temps Saturday in the mid 80s F near the boarding station and in the upper 80s F / lower 90s F at all other stations. Overnight lows in the upper 70's to lower 80's.

Visibility: Not anticipating fog concerns at this time.

Precip Forecast: 4 PM CT



Wind Speed
4 PM CT



Low Temps
Saturday PM

Houston Pilots: Sun. 8/28/2022



Forecast Discussion

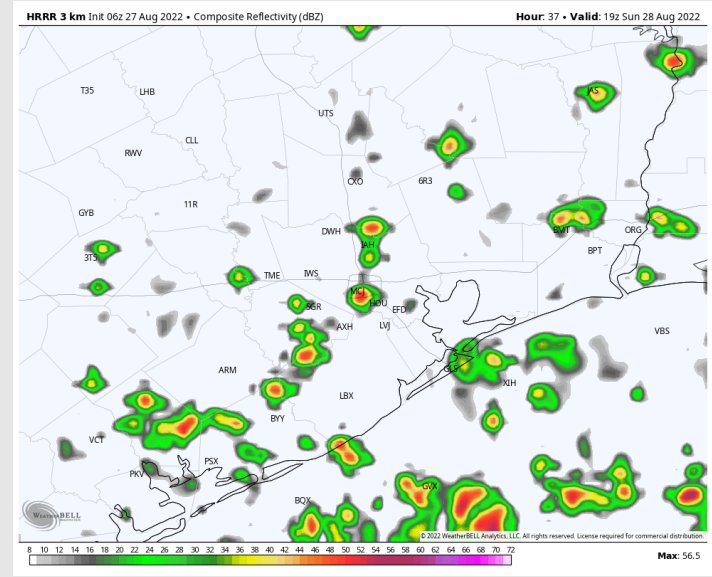
Precip: Scattered, 20% showers/storms along the coastline and near the boarding station beginning as early as 7AM. By 1PM, scattered storm chances to move inland likely impacting all stations in a hit and miss fashion through 10 PM. Locally heavy downpours, wind gusts and lightning are possible under the strongest cells.

Wind: Winds out of the SE 10-15 MPH in the early AM. Winds shift from the SE around 11 AM and pick up to 10-15MPH for the rest of the evening. Wind gusts of up to 30 MPH possible under stronger storms.

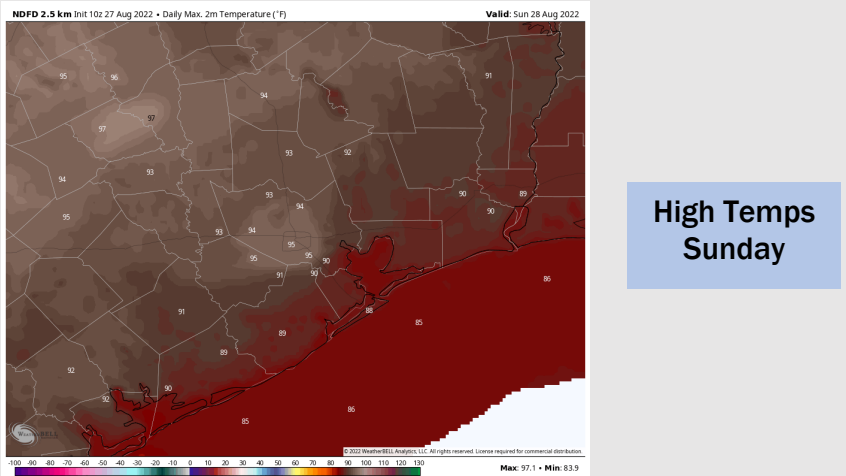
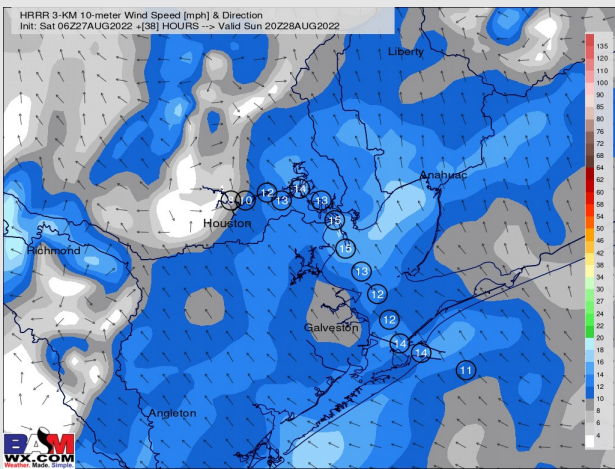
Temps: High temps Sunday in the mid 80s F near the boarding station and in the upper 80s F / near 90 F at all other stations.

Visibility: Not anticipating fog concerns at this time.

Precip Forecast: 2 PM CT



Wind Speed 3 PM CT



High Temps Sunday

Houston Pilots: Mon. 8/29/2022

Forecast Discussion

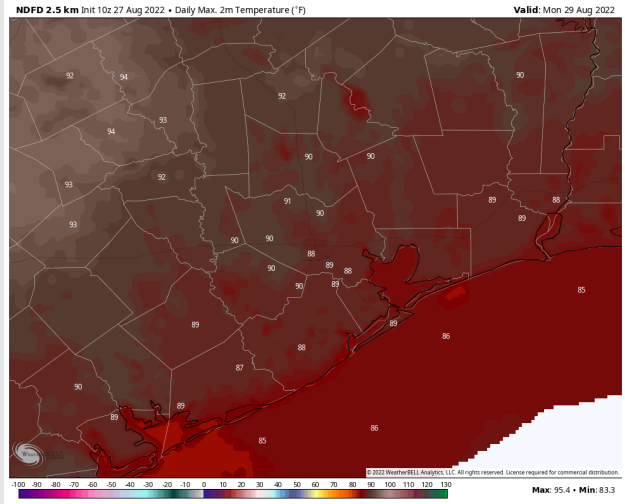
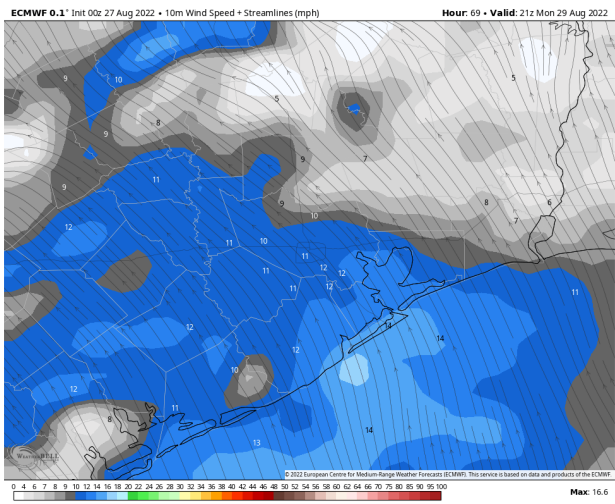
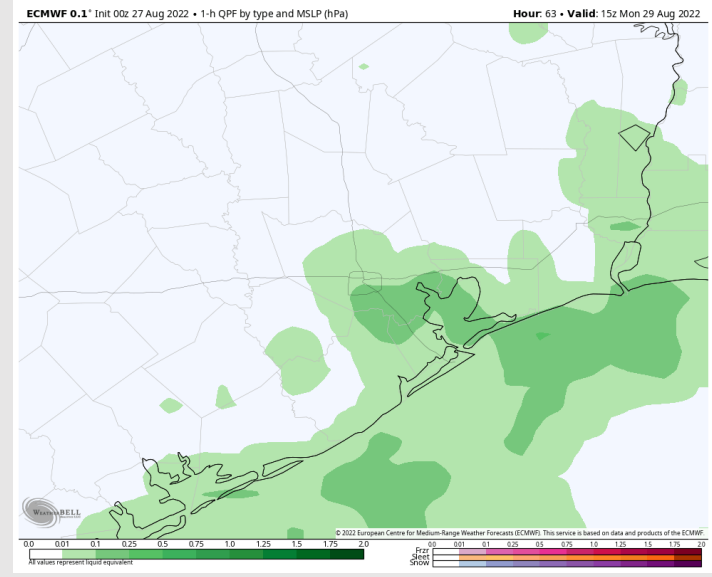
Precip: Scattered showers/storms beginning in the early AM with better storm coverage in the Gulf. After 6 AM, storm coverage will move inland and last until 6 PM. Expecting drier conditions thereafter. Locally heavy downpours possible under any of these stronger storms.

Wind: Winds out of the SE at 13-18 MPH with winds north of Morgan's Point 3-8 MPH. Around noon, winds become to 10-15 MPH still out of the SE and continue the rest of the night for all stations. Gusts up to 30 MPH possible under stronger storms.

Temps: High temps Monday will be in the mid 80s F near the boarding station and in the upper 80s F at all other stations.

Visibility: Not anticipating any fog concerns at this time.

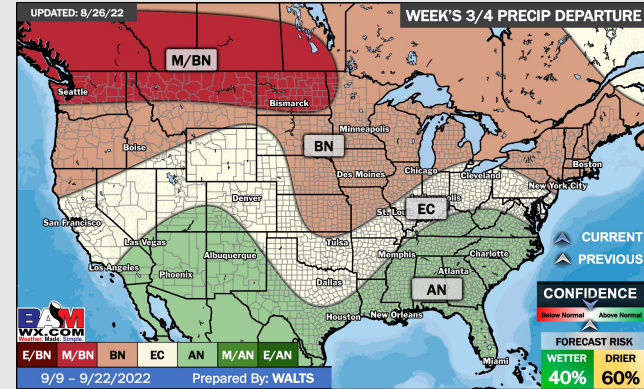
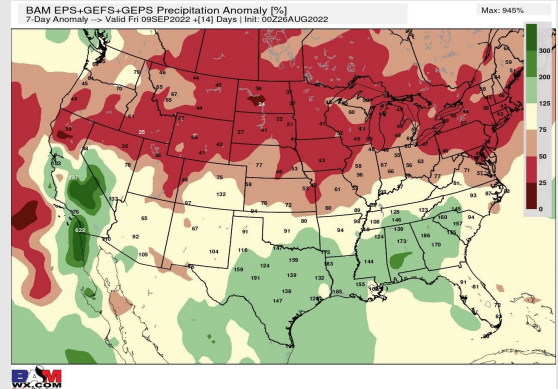
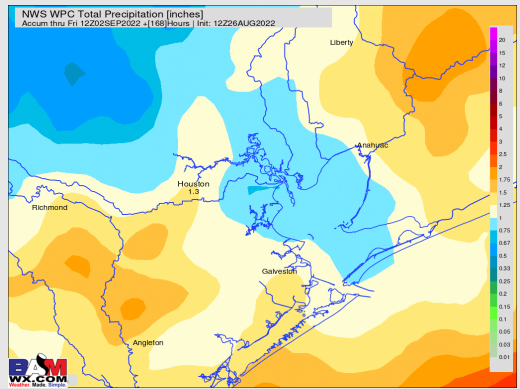
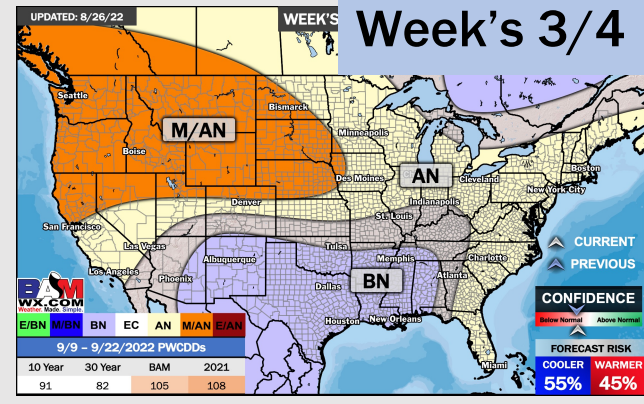
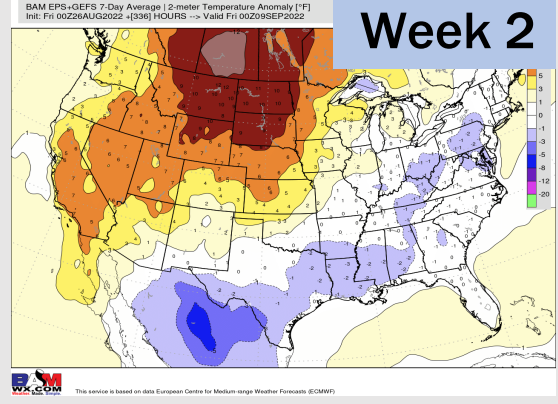
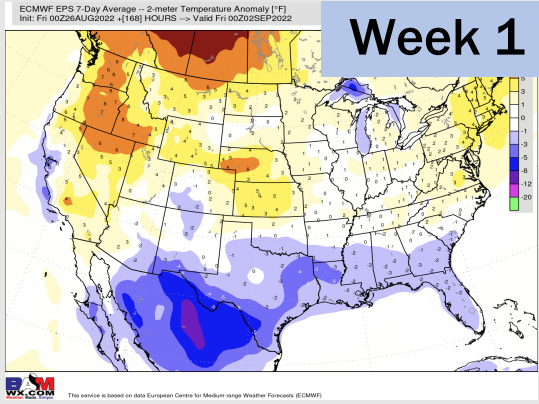
Precip Forecast: 10 AM CT



Wind Speed
4 PM CT

High Temps
Monday

Houston Pilots: 8/27/22



- Temperatures expected to be below normal for the next week. Increased rainfall chances as storms move through the area the next several days.
- Week 2 likely features below normal temperatures and above normal precipitation.
- The weeks ¾ timeframe into mid September looks to feature below normal temperatures and above normal risks for precip.