

Houston Pilots Forecast Package

Houston Pilots



Updated: 1:00 PM CT

Friday, August 26, 2022

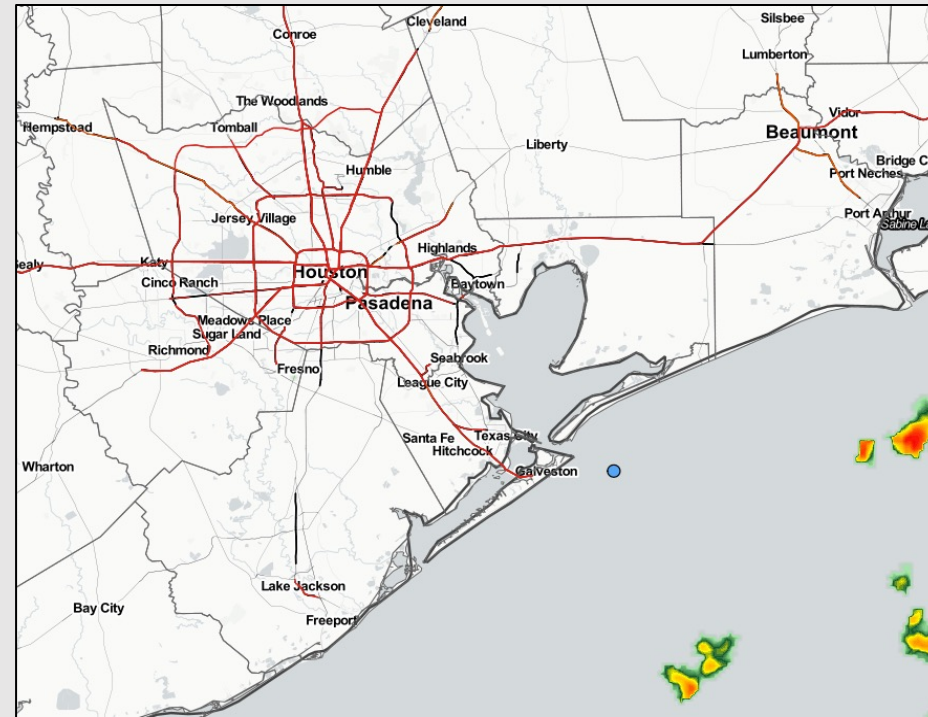
Forecaster: Vince Bryan

Weather Headlines

➤ Hit and miss shower/storm activity will continue the next several days. A stronger storm with lightning and wind gusts 20-25 MPH will be the primary hazards.

➤ More tropical details on slides below as there are some risks we are monitoring.

➤ Active pattern looks to continue into the upcoming week with daily chances. In this pattern, exact details will be hard to pinpoint given the sporadic nature.

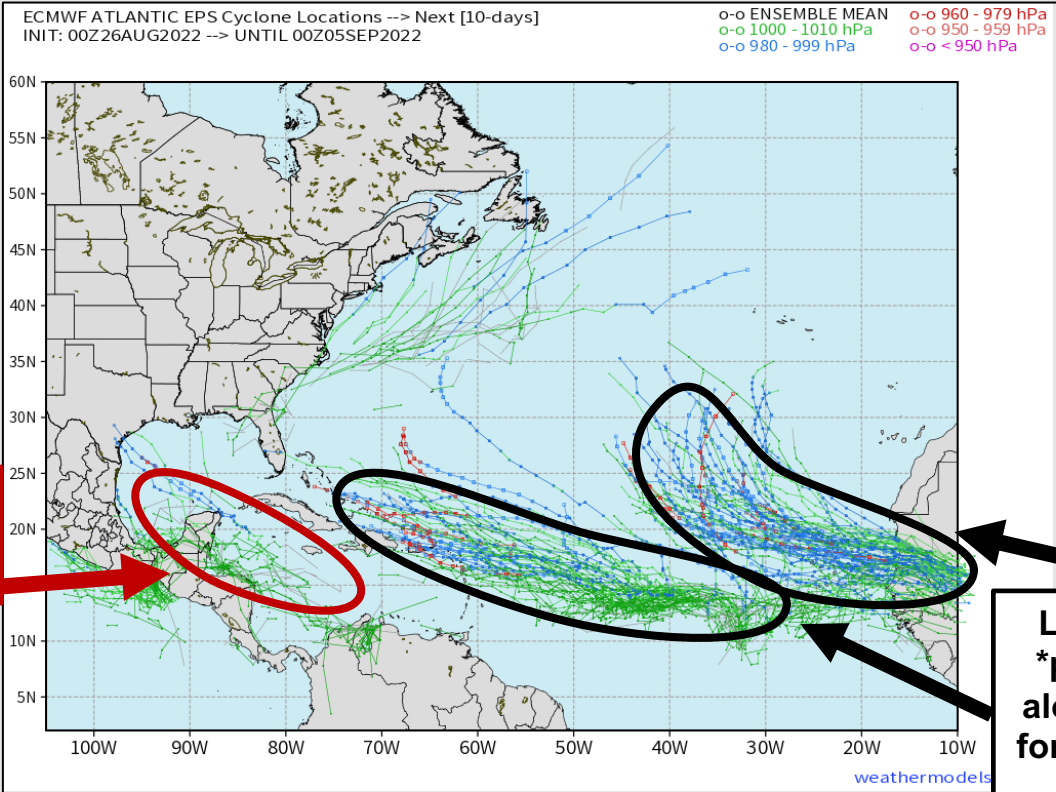


Radar/ NWS Alerts: 1:00 PM CT



As always, please do not hesitate to reach out to us with any forecast questions via the chat option on the Weather Porthole or our on-call number, **(317)-560-8122** press 1 for forecast questions.

European Data Tropical Tracks Next 10 Days



Lower threat overall, but will still continue to be monitored.

Likely out to sea with any *potential* impact coming along the E Coast. Concern for any Gulf impacts are low until any development occurs.

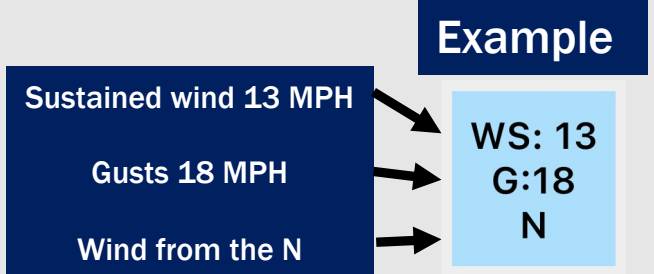
No direct tropical threat for Houston expected over the next 7 days, however we will continue to keep eyes on a few waves. The threat for something developing in the Caribbean is still there, however data is a bit less excited than 24-48 hours ago. Still certainly worth watching for strengthening of any tropical wave, and still would eye the Sep 3-6th window for any *potential* risk IF anything forms. Other potential systems to watch in the Atlantic have yet to develop, but would initially be favored to stay in the Atlantic as of now.

Confidence

Above Normal Below Normal

Normal Normal

Houston Pilots Wind Report



Time	08-26-2022 Fri 10am	08-26-2022 Fri 11am	08-26-2022 Fri 12pm	08-26-2022 Fri 1pm	08-26-2022 Fri 2pm	08-26-2022 Fri 3pm	08-26-2022 Fri 4pm	08-26-2022 Fri 5pm	08-26-2022 Fri 6pm	08-26-2022 Fri 7pm	08-26-2022 Fri 8pm	08-26-2022 Fri 9pm	08-26-2022 Fri 10pm	08-26-2022 Fri 11pm	08-27-2022 Sat 12am	08-27-2022 Sat 1am	08-27-2022 Sat 2am	08-27-2022 Sat 3am	08-27-2022 Sat 4am	08-27-2022 Sat 5am	08-27-2022 Sat 6am	08-27-2022 Sat 7am	08-27-2022 Sat 8am	08-27-2022 Sat 9am	08-27-2022 Sat 10am	08-27-2022 Sat 11am	08-27-2022 Sat 12pm	08-27-2022 Sat 1pm	08-27-2022 Sat 2pm	08-27-2022 Sat 3pm	08-27-2022 Sat 4pm	08-27-2022 Sat 5pm	08-27-2022 Sat 6pm	08-27-2022 Sat 7pm	08-27-2022 Sat 8pm	08-27-2022 Sat 9pm	
Houston Pilots N - 610 Bridge	WS: 2 G:3 NW	WS: 3 G:4 NW	WS: 2 G:4 NW	WS: 3 G:4 WNW	WS: 2 G:3 NW	WS: 4 G:5 W	WS: 7 G:10 S	WS: 8 G:10 SSE	WS: 8 G:13 S	WS: 6 G:11 SSW	WS: 1 G:8 S	WS: 3 G:8 S	WS: 5 G:10 SSE	WS: 3 G:7 S	WS: 4 G:11 SW	WS: 3 G:6 S	WS: 2 G:5 S	WS: 2 G:4 S	WS: 2 G:4 S	WS: 2 G:3 SSW	WS: 2 G:3 S	WS: 2 G:3 S	WS: 1 G:3 S	WS: 4 G:5 SW	WS: 4 G:6 SW	WS: 5 G:7 SSW	WS: 5 G:7 S	WS: 6 G:9 SSE	WS: 7 G:11 SE	WS: 8 G:13 SSE	WS: 8 G:13 SSE	WS: 8 G:14 SSE	WS: 8 G:13 SSE	WS: 8 G:13 SSE	WS: 8 G:13 SSE	WS: 7 G:11 SSE	WS: 6 G:10 SSE
Houston Pilots M - Kinder 1	WS: 2 G:3 NW	WS: 2 G:3 NW	WS: 2 G:3 WNW	WS: 2 G:4 WNW	WS: 2 G:2 WNW	WS: 4 G:5 WSW	WS: 8 G:11 SSE	WS: 8 G:10 SSE	WS: 9 G:12 S	WS: 6 G:10 SSW	WS: 1 G:4 S	WS: 4 G:9 SSW	WS: 4 G:10 SSE	WS: 3 G:8 SSW	WS: 4 G:11 SSW	WS: 3 G:6 S	WS: 2 G:5 S	WS: 2 G:4 S	WS: 1 G:3 S	WS: 2 G:2 SSW	WS: 1 G:2 S	WS: 2 G:3 S	WS: 1 G:3 S	WS: 4 G:5 SW	WS: 4 G:6 SW	WS: 5 G:7 SSW	WS: 5 G:7 SSE	WS: 6 G:9 SSE	WS: 7 G:11 SSE	WS: 8 G:13 SSE	WS: 8 G:13 SSE	WS: 8 G:14 SSE	WS: 8 G:13 SSE	WS: 8 G:13 SSE	WS: 7 G:11 SSE	WS: 6 G:10 SSE	
Houston Pilots L - Greens Bayou	WS: 2 G:4 NW	WS: 2 G:3 W	WS: 1 G:3 SSE	WS: 1 G:4 S	WS: 2 G:2 SSE	WS: 3 G:4 S	WS: 10 G:10 SSE	WS: 7 G:10 SE	WS: 7 G:12 SSE	WS: 6 G:11 SSW	WS: 2 G:6 S	WS: 3 G:10 S	WS: 3 G:9 SE	WS: 3 G:9 S	WS: 4 G:11 SSW	WS: 2 G:6 S	WS: 2 G:5 S	WS: 1 G:3 S	WS: 1 G:3 S	WS: 1 G:2 SSW	WS: 1 G:2 S	WS: 1 G:2 S	WS: 1 G:3 S	WS: 4 G:5 SW	WS: 4 G:6 SW	WS: 5 G:7 SSE	WS: 5 G:7 SSE	WS: 6 G:9 SSE	WS: 7 G:11 SSE	WS: 8 G:13 SSE	WS: 8 G:13 SSE	WS: 9 G:14 SSE	WS: 9 G:13 SSE	WS: 9 G:13 SSE	WS: 9 G:13 SSE	WS: 9 G:13 SSE	WS: 6 G:10 SSE
Houston Pilots K - Shell Crude	WS: 2 G:4 NW	WS: 2 G:3 W	WS: 2 G:3 SE	WS: 2 G:4 SSE	WS: 2 G:3 SE	WS: 4 G:6 SSE	WS: 10 G:10 SSE	WS: 8 G:12 SSE	WS: 7 G:8 SSE	WS: 3 G:8 SSW	WS: 2 G:7 SW	WS: 4 G:10 S	WS: 3 G:10 SSE	WS: 3 G:10 S	WS: 3 G:12 S	WS: 2 G:6 S	WS: 2 G:5 S	WS: 1 G:4 SSW	WS: 1 G:3 SSW	WS: 1 G:2 SSW	WS: 1 G:2 S	WS: 1 G:2 S	WS: 2 G:3 S	WS: 4 G:5 SW	WS: 4 G:6 SW	WS: 5 G:7 SSE	WS: 5 G:7 SSE	WS: 6 G:9 SSE	WS: 7 G:11 SSE	WS: 8 G:12 SSE	WS: 8 G:13 SSE	WS: 9 G:14 SSE	WS: 9 G:13 SSE	WS: 9 G:13 SSE	WS: 9 G:13 SSE	WS: 9 G:13 SSE	WS: 6 G:10 SSE
Houston Pilots J - Lynchburg Ferries	WS: 2 G:4 NW	WS: 2 G:4 W	WS: 2 G:4 ENE	WS: 1 G:4 SSE	WS: 2 G:4 SSE	WS: 4 G:5 SE	WS: 11 G:16 SSE	WS: 5 G:7 SSE	WS: 6 G:11 SSE	WS: 3 G:8 SSW	WS: 3 G:8 SSW	WS: 4 G:11 SSW	WS: 2 G:10 SSE	WS: 3 G:10 SSE	WS: 3 G:12 S	WS: 3 G:6 S	WS: 3 G:5 S	WS: 2 G:4 SSW	WS: 2 G:3 SSW	WS: 2 G:3 SSW	WS: 2 G:3 SSW	WS: 2 G:3 S	WS: 2 G:4 SSW	WS: 4 G:5 SSW	WS: 4 G:6 SSW	WS: 5 G:7 SSE	WS: 5 G:7 SSE	WS: 6 G:9 SSE	WS: 7 G:11 SSE	WS: 8 G:12 SSE	WS: 8 G:13 SSE	WS: 9 G:14 SSE	WS: 9 G:13 SSE	WS: 9 G:13 SSE	WS: 9 G:13 SSE	WS: 6 G:10 SSE	
Houston Pilots I - Exxon 3	WS: 2 G:4 WNW	WS: 2 G:3 WSW	WS: 2 G:4 E	WS: 3 G:5 SE	WS: 3 G:4 SSE	WS: 7 G:9 SSE	WS: 11 G:15 SSE	WS: 4 G:6 SSW	WS: 4 G:11 SSE	WS: 4 G:10 S	WS: 4 G:10 S	WS: 4 G:13 SSE	WS: 4 G:11 SSW	WS: 4 G:11 S	WS: 4 G:12 S	WS: 3 G:7 S	WS: 3 G:6 S	WS: 5 G:5 SSW	WS: 2 G:5 SSW	WS: 2 G:5 SSW	WS: 2 G:4 SSW	WS: 2 G:4 S	WS: 2 G:4 S	WS: 4 G:5 SSW	WS: 4 G:6 SSW	WS: 5 G:7 SSE	WS: 5 G:7 SSE	WS: 6 G:9 SSE	WS: 7 G:11 SSE	WS: 8 G:12 SSE	WS: 8 G:13 SSE	WS: 9 G:14 SSE	WS: 9 G:13 SSE	WS: 9 G:13 SSE	WS: 9 G:13 SSE	WS: 7 G:11 SSE	
Houston Pilots H - Morgans Point	WS: 2 G:4 S	WS: 3 G:4 SE	WS: 3 G:3 ESE	WS: 5 G:5 SSE	WS: 4 G:5 SSE	WS: 9 G:11 SSE	WS: 12 G:15 SSE	WS: 6 G:8 SSW	WS: 9 G:13 S	WS: 7 G:12 SSW	WS: 7 G:10 S	WS: 9 G:13 S	WS: 7 G:12 SSW	WS: 5 G:11 SSW	WS: 5 G:12 SSW	WS: 4 G:8 S	WS: 4 G:8 S	WS: 4 G:7 SSW	WS: 3 G:7 SSW	WS: 3 G:6 SSW	WS: 3 G:6 S	WS: 3 G:6 S	WS: 3 G:6 S	WS: 4 G:5 SSW	WS: 4 G:6 SSW	WS: 5 G:7 SSE	WS: 5 G:7 SSE	WS: 6 G:9 SSE	WS: 7 G:11 SSE	WS: 8 G:12 SSE	WS: 8 G:13 SSE	WS: 9 G:14 SSE	WS: 9 G:13 SSE	WS: 9 G:13 SSE	WS: 9 G:13 SSE	WS: 8 G:12 SSE	
Houston Pilots G - 75/76	WS: 3 G:4 NE	WS: 4 G:4 E	WS: 3 G:4 E	WS: 5 G:5 SSE	WS: 5 G:5 SSE	WS: 11 G:13 SSE	WS: 14 G:16 SSW	WS: 9 G:11 SSW	WS: 10 G:13 S	WS: 11 G:15 SSW	WS: 9 G:11 S	WS: 10 G:11 S	WS: 11 G:14 SSW	WS: 9 G:12 SSW	WS: 8 G:12 SSW	WS: 6 G:6 SSW	WS: 6 G:10 S	WS: 5 G:9 SSW	WS: 5 G:9 SSW	WS: 5 G:9 SSW	WS: 5 G:8 SSW	WS: 4 G:7 SW	WS: 4 G:7 SW	WS: 4 G:6 SSW	WS: 4 G:6 SSW	WS: 5 G:7 SE	WS: 5 G:7 SE	WS: 6 G:9 SSE	WS: 7 G:11 SSE	WS: 8 G:12 SSE	WS: 8 G:13 SSE	WS: 9 G:14 SSE	WS: 9 G:13 SSE	WS: 9 G:13 SSE	WS: 9 G:13 SSE	WS: 9 G:13 SSE	
Houston Pilots F - 63/64	WS: 3 G:4 S	WS: 3 G:4 ENE	WS: 2 G:3 NE	WS: 3 G:3 SSE	WS: 6 G:6 SE	WS: 13 G:17 SSE	WS: 15 G:19 SSW	WS: 9 G:12 SSW	WS: 10 G:13 S	WS: 12 G:15 S	WS: 8 G:11 S	WS: 8 G:10 S	WS: 11 G:13 SSW	WS: 10 G:12 SSW	WS: 9 G:12 SSW	WS: 7 G:10 S	WS: 6 G:10 SSW	WS: 6 G:10 SSW	WS: 5 G:9 SSW	WS: 5 G:9 SSW	WS: 5 G:9 SSW	WS: 5 G:9 SSW	WS: 5 G:8 SSW	WS: 4 G:7 SSW	WS: 4 G:7 SSW	WS: 5 G:8 SSW	WS: 5 G:8 SSW	WS: 6 G:9 SSE	WS: 7 G:11 SSE	WS: 8 G:12 SSE	WS: 8 G:13 SSE	WS: 9 G:14 SSE	WS: 9 G:13 SSE	WS: 9 G:13 SSE	WS: 9 G:13 SSE	WS: 10 G:14 SSE	
Houston Pilots E - 51/52	WS: 4 G:5 NNW	WS: 3 G:3 S	WS: 3 G:2 E	WS: 2 G:3 SSE	WS: 2 G:8 SSE	WS: 14 G:16 S	WS: 10 G:12 SSW	WS: 10 G:13 S	WS: 10 G:13 S	WS: 13 G:16 S	WS: 9 G:12 S	WS: 8 G:10 S	WS: 9 G:12 SSW	WS: 9 G:11 SSW	WS: 8 G:13 S	WS: 7 G:11 S	WS: 7 G:11 S	WS: 6 G:10 SSW	WS: 6 G:10 SSW	WS: 6 G:9 SSW	WS: 5 G:9 SSW	WS: 5 G:9 SSW	WS: 5 G:9 SSW	WS: 5 G:8 SSW	WS: 4 G:7 SSW	WS: 4 G:7 SSW	WS: 5 G:8 SSW	WS: 5 G:8 SSW	WS: 6 G:9 SSE	WS: 7 G:11 SSE	WS: 8 G:12 SSE	WS: 8 G:13 SSE	WS: 9 G:14 SSE	WS: 9 G:13 SSE	WS: 9 G:13 SSE	WS: 9 G:13 SSE	WS: 10 G:14 SSE
Houston Pilots D - 37/38	WS: 6 G:7 NW	WS: 4 G:4 W	WS: 2 G:2 E	WS: 3 G:3 SE	WS: 9 G:11 SSE	WS: 14 G:16 SSW	WS: 13 G:15 SW	WS: 10 G:13 SSW	WS: 11 G:13 SSW	WS: 13 G:15 SSW	WS: 9 G:12 S	WS: 7 G:10 SSW	WS: 9 G:11 SSW	WS: 8 G:10 S	WS: 10 G:13 S	WS: 8 G:12 S	WS: 8 G:11 S	WS: 7 G:11 SSW	WS: 7 G:10 SSW	WS: 7 G:9 SSW	WS: 6 G:9 SSW	WS: 6 G:9 SSW	WS: 5 G:8 SSW	WS: 5 G:7 SSW	WS: 5 G:7 SSW	WS: 5 G:6 SSW	WS: 5 G:6 SSW	WS: 6 G:8 SSE	WS: 7 G:11 SSE	WS: 8 G:12 SSE	WS: 8 G:13 SSE	WS: 9 G:14 SSE	WS: 9 G:13 SSE	WS: 9 G:13 SSE	WS: 9 G:13 SSE	WS: 10 G:14 SSE	
Houston Pilots C - 25/26	WS: 6 G:8 NW	WS: 4 G:3 W	WS: 2 G:2 ESE	WS: 2 G:4 SE	WS: 11 G:12 SSE	WS: 14 G:16 SSW	WS: 12 G:14 SSW	WS: 10 G:12 SSW	WS: 11 G:14 SSW	WS: 11 G:14 SSW	WS: 8 G:12 SSW	WS: 8 G:9 SSW	WS: 8 G:10 S	WS: 9 G:10 S	WS: 9 G:14 S	WS: 8 G:12 S	WS: 8 G:12 S	WS: 8 G:11 SSW	WS: 7 G:10 SSW	WS: 7 G:10 SSW	WS: 7 G:10 SSW	WS: 7 G:9 SSW	WS: 6 G:9 SSW	WS: 6 G:8 SSW	WS: 5 G:7 SSW	WS: 5 G:7 SSW	WS: 6 G:8 SSE	WS: 6 G:8 SSE	WS: 7 G:9 SSE	WS: 8 G:10 SSE	WS: 8 G:12 SSE	WS: 9 G:13 SSE	WS: 9 G:13 SSE	WS: 9 G:13 SSE	WS: 9 G:13 SSE	WS: 10 G:14 SSE	
Houston Pilots B - 11/12	WS: 7 G:10 WNW	WS: 3 G:4 NW	WS: 2 G:3 S	WS: 5 G:6 SSE	WS: 5 G:12 S	WS: 13 G:15 SSW	WS: 12 G:14 SSW	WS: 10 G:13 SSW	WS: 11 G:14 SSW	WS: 11 G:14 SSW	WS: 9 G:11 SSW	WS: 8 G:10 S	WS: 8 G:9 S	WS: 9 G:13 S	WS: 9 G:12 S	WS: 8 G:12 S	WS: 8 G:11 S	WS: 8 G:11 S	WS: 7 G:10 S	WS: 7 G:10 S	WS: 7 G:10 S	WS: 7 G:9 S	WS: 6 G:9 S	WS: 6 G:8 S	WS: 5 G:7 S	WS: 5 G:7 S	WS: 6 G:8 SSE	WS: 6 G:8 SSE	WS: 7 G:9 SSE	WS: 8 G:10 SSE	WS: 8 G:12 SSE	WS: 9 G:13 SSE	WS: 9 G:13 SSE	WS: 9 G:13 SSE	WS: 9 G:13 SSE	WS: 10 G:14 SSE	
Houston Pilots A - 1 & 2 Bravo	WS: 8 G:11 WNW	WS: 2 G:5 NW	WS: 2 G:5 WNW	WS: 11 G:11 S	WS: 11 G:11 S	WS: 14 G:14 SSW	WS: 13 G:14 SW	WS: 13 G:14 SW	WS: 12 G:13 SSW	WS: 12 G:14 SSW	WS: 12 G:13 SSW	WS: 11 G:11 SSW	WS: 9 G:10 S	WS: 7 G:8 S	WS: 11 G:12 S	WS: 10 G:13 S	WS: 10 G:12 S	WS: 10 G:13 S	WS: 10 G:12 S	WS: 10 G:12 S	WS: 9 G:11 S	WS: 8 G:10 S	WS: 8 G:10 S	WS: 7 G:9 S	WS: 6 G:8 S	WS: 6 G:8 S	WS: 6 G:8 SSE	WS: 7 G:9 SSE	WS: 8 G:10 SSE	WS: 8 G:11 S	WS: 9 G:12 S	WS: 9 G:13 S	WS: 9 G:13 S	WS: 9 G:13 S	WS: 10 G:14 SSE	WS: 11 G:15 SSE	

See slides below for official thoughts on winds.

Houston Pilots: Fri. 8/26/2022

Forecast Discussion

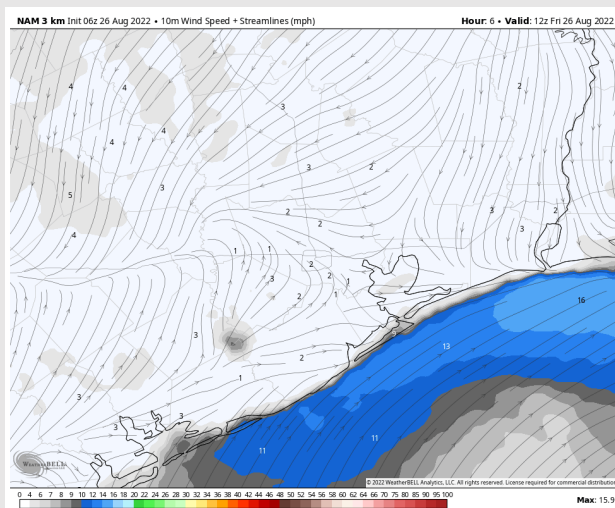
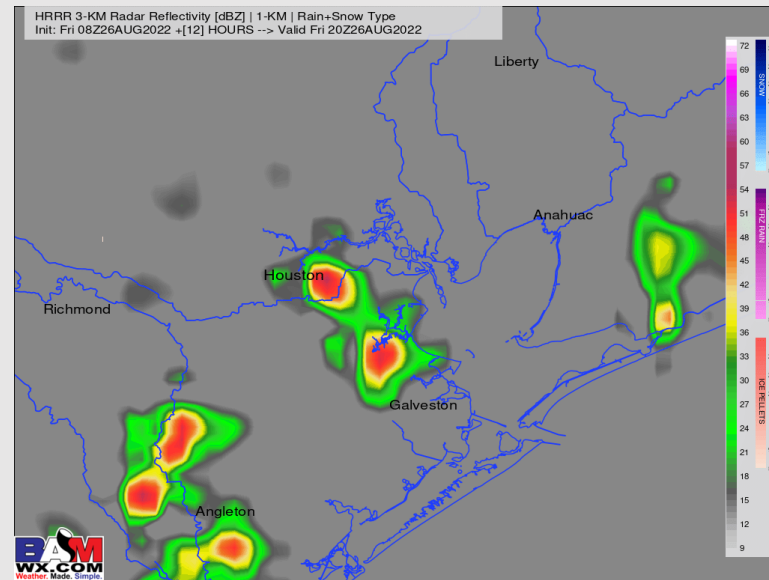
Precip: Coverage likely increases the rest of the afternoon with chances 30-40% coming at any point. Expecting drier conditions after 8PM and through the overnight (~10%). Locally heavier rains and lightning continue to be the main hazards.

Wind: Winds remain 8-13 MPH at the boarding station (5-10 MPH elsewhere) generally out of the S/SW (although variation of direction may occur within precip). A locally heavier pocket of rain could provide gusts 20-25 MPH.

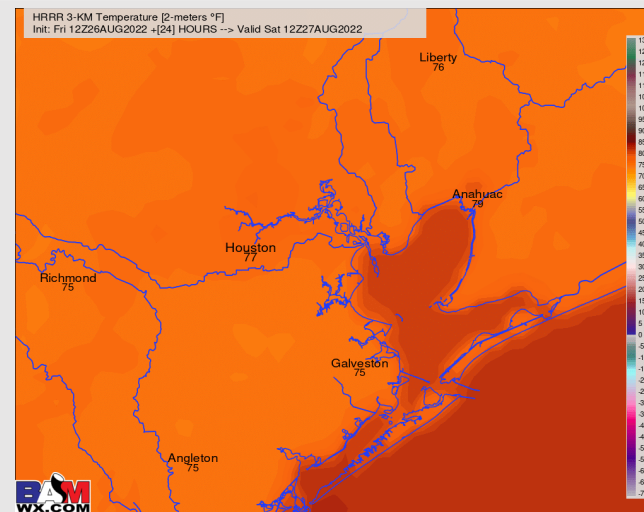
Temps: Low Temps drop back into the upper 70s / lower 80s tonight.

Visibility: Not expecting any fog in the AM hours.

Precip Forecast: 4 PM CT



Wind Speed
9 AM CT



Low Temps
Sat AM

Houston Pilots: sat. 8/27/2022



Forecast Discussion

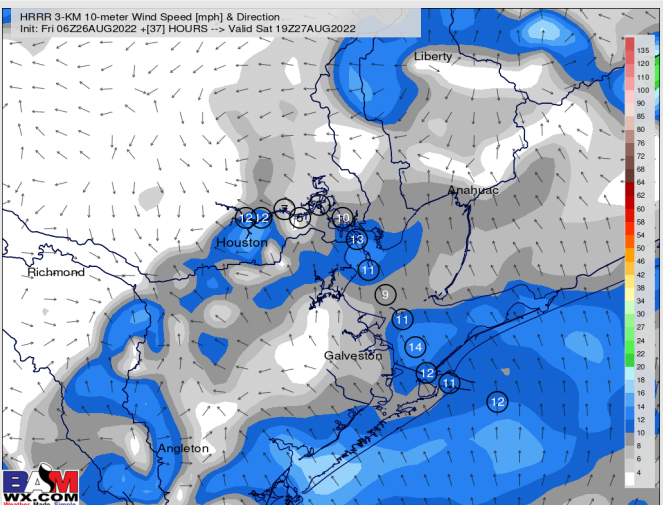
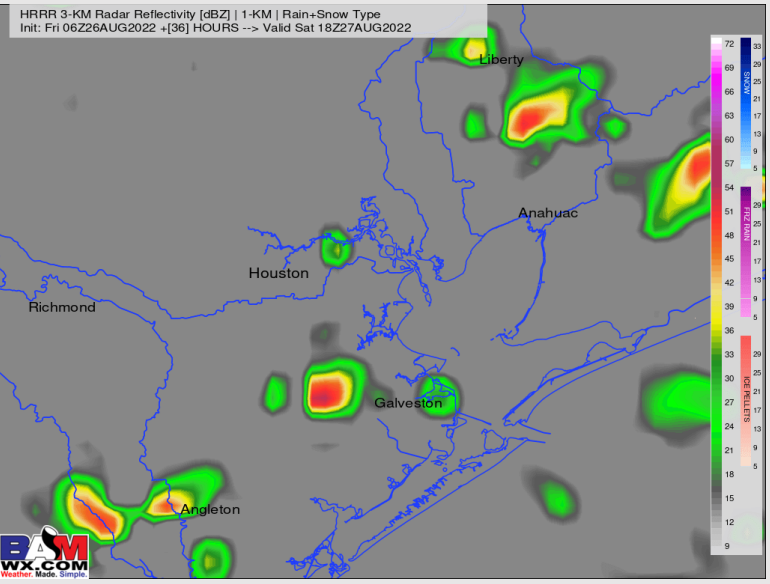
Precip: A “rinse and repeat” pattern Saturday with isolated to scattered shower and thunderstorms. The pattern will continue to remain difficult to nail down specific timing given the sporadic nature of things / not a defined wave of energy passing through the area.

Wind: Variable winds throughout the AM Saturday of 5-10 MPH. After 1PM, winds veer out of the S at 8-13 MPH and continue for the rest of Sat evening. Gusts of 10-15 MPH possible (locally higher gusts possible in the heaviest precip).

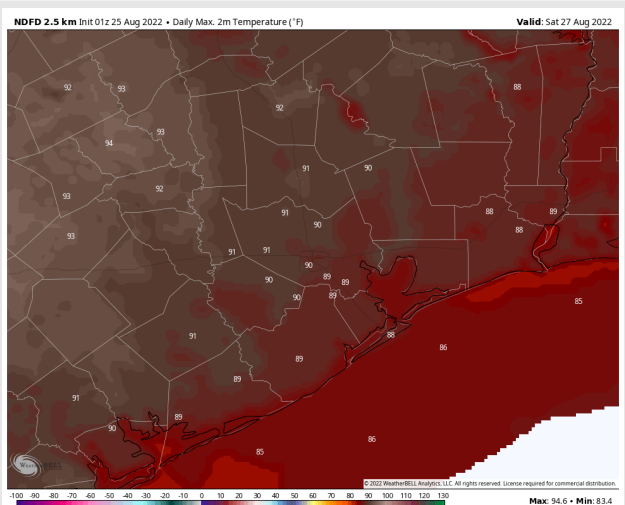
Temps: High temps Saturday in the mid 80s F near the boarding station and in the upper 80s F near 90 F at all other stations.

Visibility: Not anticipating fog concerns at this time.

Precip Forecast: 4 PM CT



Wind Speed
2 PM CT



High Temps
Saturday

Houston Pilots: Sun. 8/28/2022



Forecast Discussion

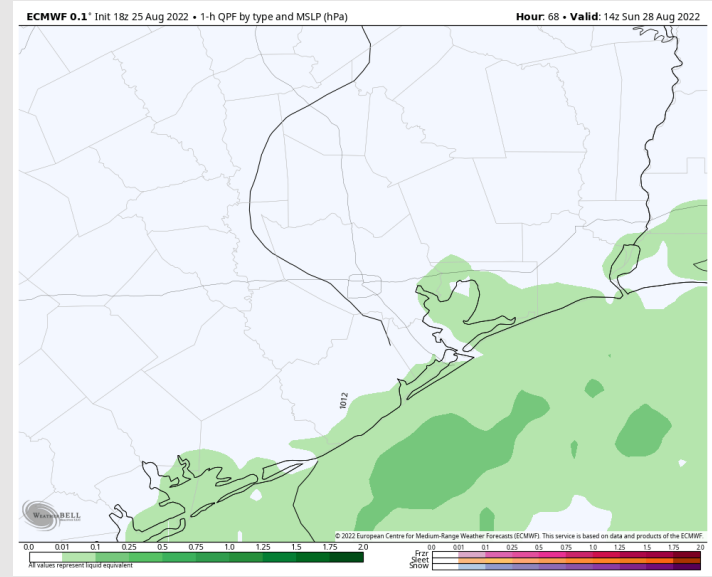
Precip: Scattered showers/storms along the coastline and near the boarding station in the early AM. Around ~9AM, storms will start to move inland and will be north of HOU Metro by 1PM. Chances become much more isolated/sporadic beyond 1PM.

Wind: Winds out of the S 8-13 MPH in the early AM. Winds veer from the SE around 1PM still 8-13MPH. Wind gusts of 25MPH possible under stronger storms.

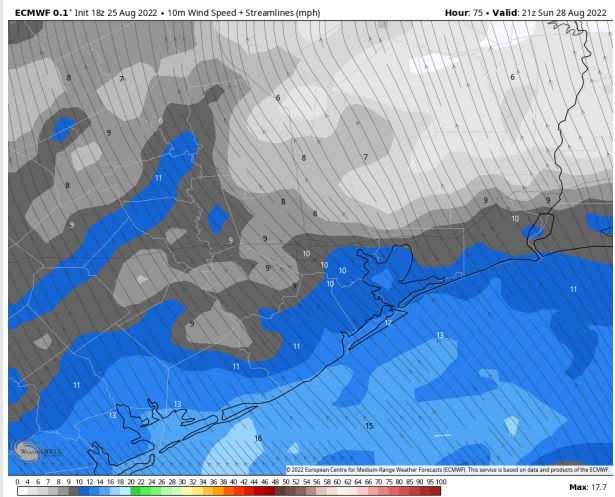
Temps: High temps Sunday in the mid 80s F near the boarding station and in the upper 80s F / near 90 F at all other stations.

Visibility: Not anticipating fog concerns at this time.

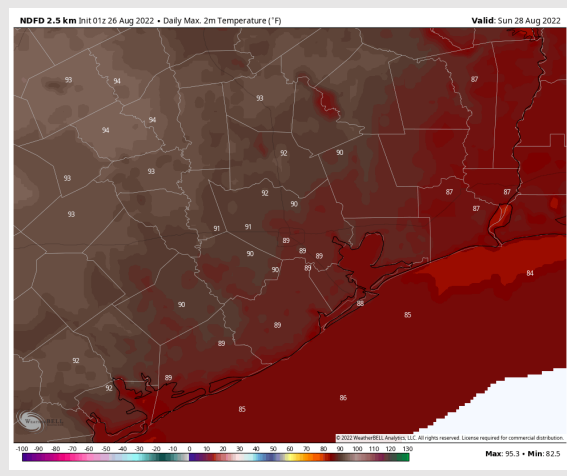
Precip Forecast: 9 AM CT



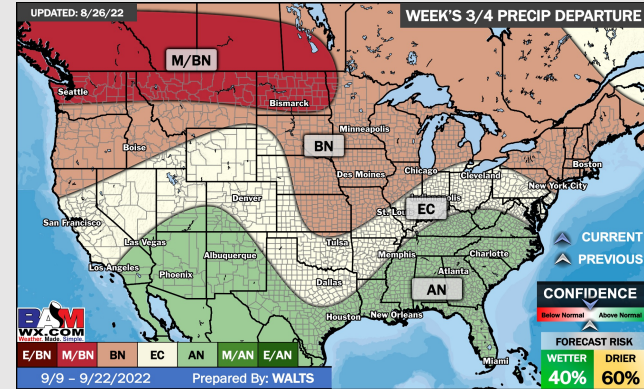
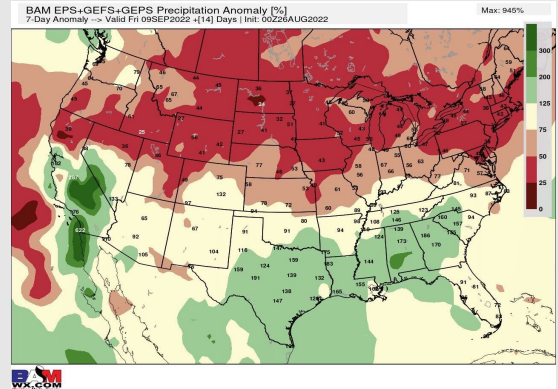
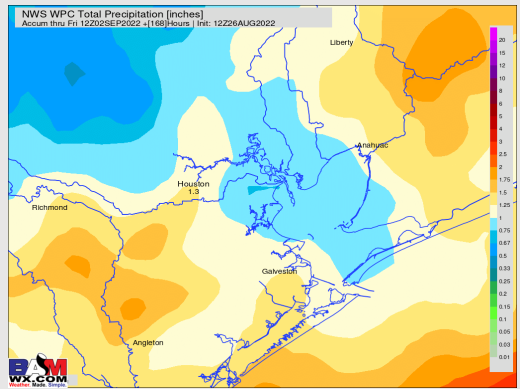
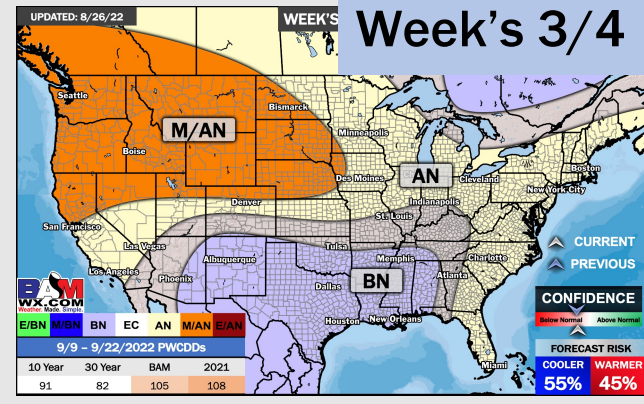
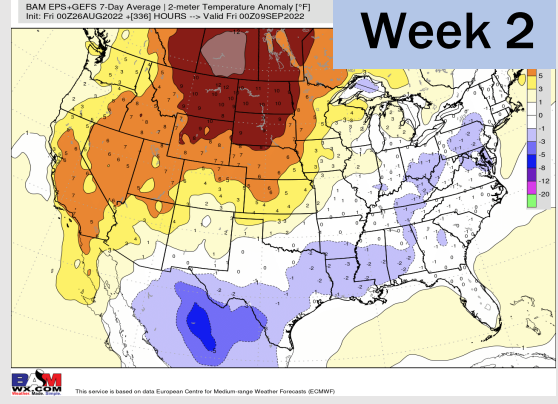
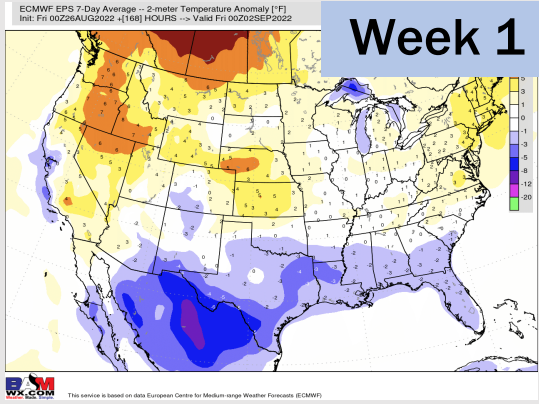
Wind Speed
4 PM CT



High Temps
Sunday



Houston Pilots: 8/26/22



- Temperatures expected to be below normal for the next week. Increased rainfall chances as storms move through the area the next several days.
- Week 2 likely features below normal temperatures and above normal precipitation.
- The weeks ¾ timeframe into mid September looks to feature below normal temperatures and above normal risks for precip.