

Houston Pilots Forecast Package

Houston Pilots



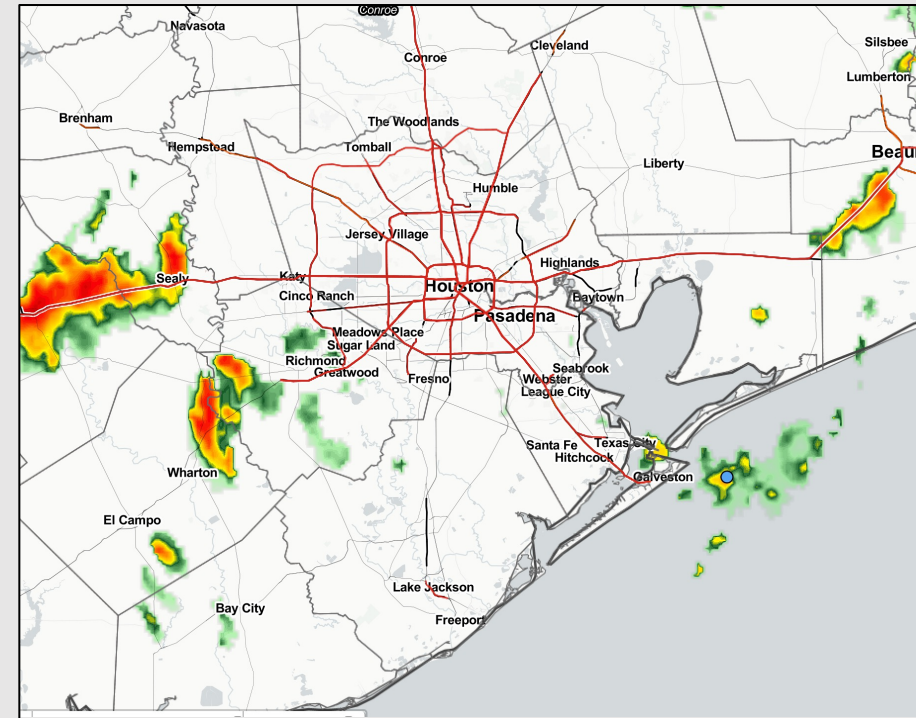
Updated: 5:00 AM CT

Wednesday, August 24, 2022

Forecaster: Vince Bryan

Weather Headlines

- Hit and miss shower/storm activity will continue the next several days. A stronger storm with lightning and wind gusts 20-30 MPH will be the primary hazards.
- More tropical details on slides below as there are some risks we are monitoring.
- Active pattern looks to continue into the weekend with daily precip chances.

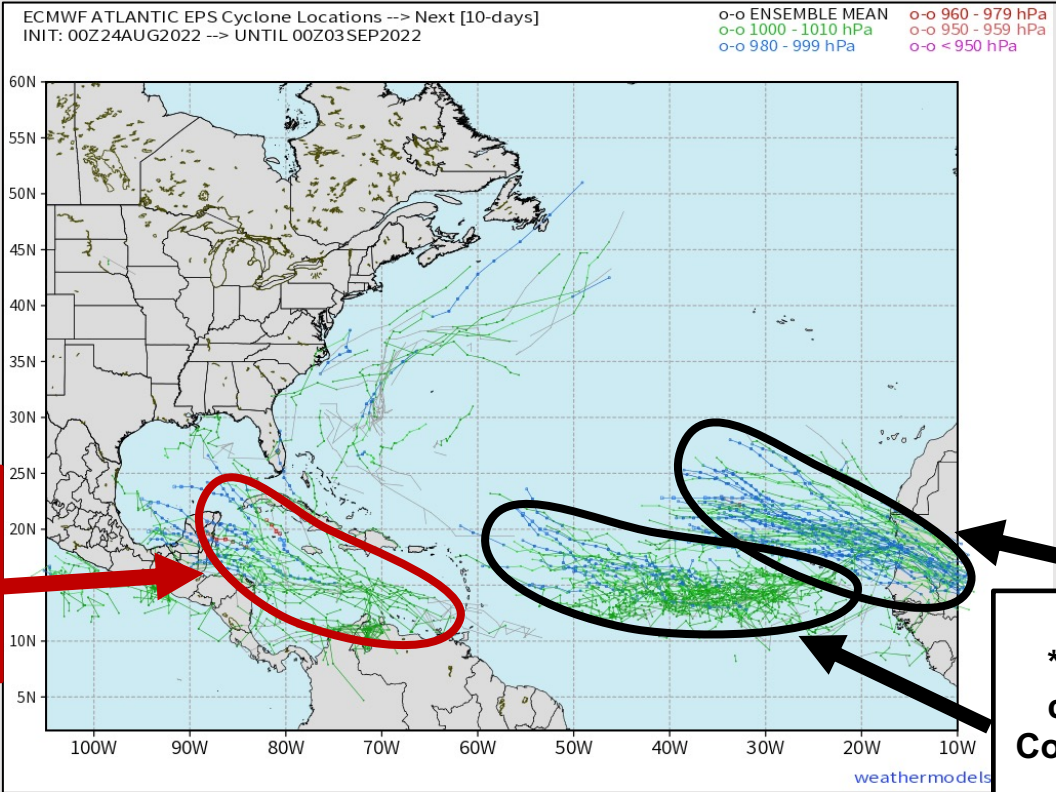


Radar/ NWS Alerts: 5:00 AM CT



As always, please do not hesitate to reach out to us with any forecast questions via the chat option on the Weather Porthole or our on-call number, **(317)-560-8122** press 1 for forecast questions.

European Data Tropical Tracks Next 10 Days



Area to monitor in the medium term. Any *potential* risks to SE TX area would come early Sep.

Likely out to sea/ any *potential* impact would come along the E Coast. Concern for any Gulf impact rather low as of now.

No direct tropical threat for Houston expected over the next 7 days, however data over the last 24 hours has been picking up more on a risk to watch in the Caribbean. This wave has yet to even form so far more questions than answers in regards to any details. IF anything does come of this wave and IF it is able to sustain itself into the Western Gulf, and *potential* impacts would not likely come until the Sep 2-5 timeframe.

Confidence

Above Normal Below Normal

Houston Pilots Visibility Report

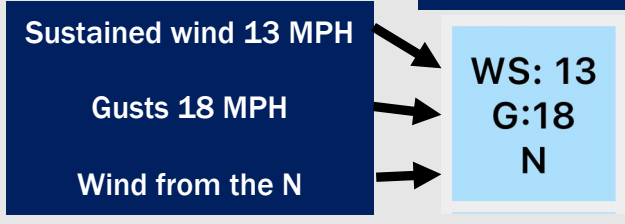


Time	08-24-2022 Wed 4am	08-24-2022 Wed 5am	08-24-2022 Wed 6am	08-24-2022 Wed 7am	08-24-2022 Wed 8am	08-24-2022 Wed 9am	08-24-2022 Wed 10am	08-24-2022 Wed 11am	08-24-2022 Wed 12pm	08-24-2022 Wed 1pm	08-24-2022 Wed 2pm	08-24-2022 Wed 3pm	08-24-2022 Wed 4pm	08-24-2022 Wed 5pm	08-24-2022 Wed 6pm	08-24-2022 Wed 7pm	08-24-2022 Wed 8pm	08-24-2022 Wed 9pm	08-24-2022 Wed 10pm	08-24-2022 Wed 11pm	08-25-2022 Thu 12am	08-25-2022 Thu 1am	08-25-2022 Thu 2am	08-25-2022 Thu 3am	08-25-2022 Thu 4am	08-25-2022 Thu 5am	08-25-2022 Thu 6am	08-25-2022 Thu 7am	08-25-2022 Thu 8am	08-25-2022 Thu 9am	08-25-2022 Thu 10am	08-25-2022 Thu 11am	08-25-2022 Thu 12pm	08-25-2022 Thu 1pm	08-25-2022 Thu 2pm	08-25-2022 Thu 3pm		
Houston Pilots N - 610 Bridge	10.000	10.000	10.000	10.000	10.000	10.000	10.000	10.000	10.000	10.000	10.000	10.000	10.000	10.000	10.000	10.000	10.000	10.000	10.000	10.000	10.000	8.988	10.000	10.000	9.772	9.496	10.000	8.988	6.964	6.964	9.496	10.000	8.988	7.954	7.954	10.000		
Houston Pilots M - Kinder 1	10.000	10.000	10.000	10.000	10.000	10.000	10.000	10.000	10.000	10.000	10.000	10.000	10.000	10.000	10.000	10.000	10.000	10.000	10.000	10.000	10.000	8.988	10.000	10.000	9.769	9.494	10.000	8.988	7.212	7.212	9.494	10.000	8.988	8.225	7.954	10.000		
Houston Pilots L - Greens Bayou	10.000	10.000	10.000	10.000	10.000	10.000	10.000	10.000	10.000	10.000	10.000	10.000	10.000	10.000	10.000	10.000	10.000	10.000	10.000	10.000	10.000	10.000	10.000	10.000	10.000	10.000	10.000	8.988	7.573	7.573	10.000	10.000	8.988	8.988	8.253	10.000		
Houston Pilots K - Shell Crude	10.000	10.000	10.000	10.000	10.000	10.000	10.000	10.000	10.000	10.000	10.000	10.000	10.000	10.000	10.000	10.000	10.000	10.000	10.000	10.000	10.000	10.000	10.000	10.000	10.000	10.000	10.000	8.988	8.033	8.033	10.000	10.000	8.988	8.988	8.988	10.000		
Houston Pilots J - Lynchburg Ferries	10.000	10.000	10.000	10.000	10.000	10.000	10.000	10.000	10.000	10.000	10.000	10.000	10.000	10.000	10.000	10.000	10.000	10.000	10.000	10.000	10.000	10.000	10.000	10.000	10.000	10.000	10.000	8.988	8.033	8.033	10.000	10.000	8.988	8.988	8.988	10.000		
Houston Pilots I - Exxon 3	10.000	10.000	10.000	10.000	10.000	10.000	10.000	10.000	10.000	10.000	10.000	10.000	10.000	10.000	10.000	10.000	10.000	10.000	10.000	10.000	10.000	10.000	10.000	10.000	10.000	10.000	10.000	10.000	9.658	8.353	8.033	10.000	10.000	9.968	8.988	8.988	10.000	
Houston Pilots H - Morgans Point	10.000	10.000	10.000	10.000	10.000	10.000	10.000	10.000	10.000	10.000	10.000	10.000	10.000	10.000	10.000	10.000	10.000	10.000	10.000	10.000	10.000	10.000	10.000	10.000	10.000	10.000	10.000	10.000	9.658	8.420	8.033	10.000	10.000	10.000	8.988	8.988	10.000	
Houston Pilots G - 75/76	10.000	10.000	10.000	10.000	10.000	10.000	10.000	10.000	10.000	10.000	10.000	10.000	10.000	10.000	10.000	10.000	10.000	10.000	10.000	10.000	10.000	10.000	10.000	10.000	10.000	10.000	10.000	10.000	10.000	8.988	8.743	10.000	10.000	10.000	8.988	8.988	10.000	
Houston Pilots F - 63/64	10.000	10.000	10.000	10.000	10.000	10.000	10.000	10.000	10.000	9.038	10.000	10.000	10.000	10.000	10.000	10.000	10.000	10.000	10.000	10.000	10.000	10.000	10.000	10.000	10.000	10.000	10.000	10.000	10.000	10.000	10.000	10.000	10.000	10.000	8.988	8.988	10.000	
Houston Pilots E - 51/52	10.000	10.000	10.000	10.000	10.000	10.000	10.000	10.000	10.000	9.298	10.000	9.038	10.000	10.000	10.000	10.000	10.000	10.000	10.000	10.000	10.000	10.000	10.000	10.000	10.000	10.000	10.000	10.000	10.000	10.000	10.000	10.000	10.000	10.000	10.000	9.904	8.988	10.000
Houston Pilots D - 37/38	10.000	10.000	10.000	10.000	10.000	10.000	10.000	10.000	10.000	10.000	10.000	8.896	10.000	10.000	10.000	10.000	10.000	10.000	10.000	10.000	10.000	10.000	10.000	10.000	10.000	10.000	10.000	10.000	10.000	10.000	10.000	10.000	10.000	10.000	10.000	10.000	10.000	10.000
Houston Pilots C - 25/26	10.000	10.000	10.000	10.000	10.000	10.000	10.000	10.000	10.000	10.000	9.514	9.038	10.000	10.000	10.000	10.000	10.000	10.000	10.000	10.000	10.000	10.000	10.000	10.000	10.000	10.000	10.000	10.000	10.000	10.000	10.000	10.000	10.000	10.000	10.000	10.000	10.000	10.000
Houston Pilots B - 11/12	10.000	10.000	10.000	10.000	10.000	10.000	10.000	10.000	10.000	10.000	9.430	9.761	10.000	10.000	10.000	10.000	10.000	10.000	10.000	10.000	10.000	10.000	10.000	10.000	10.000	10.000	10.000	10.000	10.000	10.000	10.000	10.000	10.000	10.000	10.000	10.000	10.000	10.000
Houston Pilots A - 1 & 2 Bravo	10.000	10.000	10.000	10.000	10.000	10.000	10.000	10.000	10.000	10.000	10.000	10.000	10.000	10.000	10.000	10.000	10.000	10.000	10.000	9.822	9.822	9.822	10.000	10.000	10.000	9.822	9.822	9.822	9.822	9.822	9.822	9.583	9.064	9.771	9.822	9.498	9.822	

Houston Pilots Wind Report



Example



Time	08-24-2022 Wed 4am	08-24-2022 Wed 5am	08-24-2022 Wed 6am	08-24-2022 Wed 7am	08-24-2022 Wed 8am	08-24-2022 Wed 9am	08-24-2022 Wed 10am	08-24-2022 Wed 11am	08-24-2022 Wed 12pm	08-24-2022 Wed 1pm	08-24-2022 Wed 2pm	08-24-2022 Wed 3pm	08-24-2022 Wed 4pm	08-24-2022 Wed 5pm	08-24-2022 Wed 6pm	08-24-2022 Wed 7pm	08-24-2022 Wed 8pm	08-24-2022 Wed 9pm	08-24-2022 Wed 10pm	08-24-2022 Wed 11pm	08-25-2022 Thu 12am	08-25-2022 Thu 1am	08-25-2022 Thu 2am	08-25-2022 Thu 3am	08-25-2022 Thu 4am	08-25-2022 Thu 5am	08-25-2022 Thu 6am	08-25-2022 Thu 7am	08-25-2022 Thu 8am	08-25-2022 Thu 9am	08-25-2022 Thu 10am	08-25-2022 Thu 11am	08-25-2022 Thu 12pm	08-25-2022 Thu 1pm	08-25-2022 Thu 2pm	08-25-2022 Thu 3pm		
Houston Pilots N - 610 Bridge	WS: 4 G:12 WSW	WS: 4 G:12 WSW	WS: 4 G:11 WSW	WS: 3 G:11 WSW	WS: 4 G:13 W	WS: 6 G:13 W	WS: 6 G:10 SW	WS: 4 G:10 W	WS: 7 G:10 WNW	WS: 7 G:7 W	WS: 4 G:7 W	WS: 8 G:10 S	WS: 13 G:19 S	WS: 5 G:8 S	WS: 3 G:4 SE	WS: 4 G:7 SE	WS: 3 G:7 SSE	WS: 3 G:6 S	WS: 2 G:5 SSW	WS: 2 G:4 SSW	WS: 1 G:3 SSW	WS: 1 G:4 SSW	WS: 1 G:3 SW	WS: 1 G:2 SW	WS: 1 G:2 SWW	WS: 1 G:3 SWW	WS: 2 G:3 SWW	WS: 2 G:4 WNW	WS: 4 G:6 WNW	WS: 4 G:7 WNW	WS: 5 G:8 W	WS: 4 G:8 WNW	WS: 5 G:10 WNW	WS: 4 G:9 WNW	WS: 4 G:9 W			
Houston Pilots M - Kinder 1	WS: 4 G:12 W	WS: 4 G:12 WSW	WS: 4 G:10 WSW	WS: 3 G:10 WSW	WS: 4 G:13 WSW	WS: 6 G:13 WSW	WS: 7 G:10 SSW	WS: 4 G:10 W	WS: 6 G:10 WNW	WS: 6 G:10 W	WS: 4 G:6 W	WS: 10 G:13 SSE	WS: 13 G:20 S	WS: 8 G:8 SSW	WS: 5 G:5 SSE	WS: 4 G:8 SE	WS: 3 G:7 S	WS: 2 G:6 S	WS: 2 G:4 SSW	WS: 2 G:4 SSW	WS: 1 G:3 SSW	WS: 1 G:4 SSW	WS: 1 G:3 SW	WS: 1 G:2 SW	WS: 1 G:2 SWW	WS: 1 G:2 SWW	WS: 1 G:3 SWW	WS: 2 G:4 WNW	WS: 2 G:4 WNW	WS: 4 G:6 WNW	WS: 4 G:6 WNW	WS: 5 G:8 W	WS: 4 G:8 W	WS: 4 G:9 W	WS: 4 G:9 W	WS: 4 G:9 W		
Houston Pilots L - Greens Bayou	WS: 4 G:12 W	WS: 3 G:11 WSW	WS: 3 G:9 WSW	WS: 2 G:9 WSW	WS: 3 G:12 W	WS: 6 G:14 W	WS: 7 G:11 WSW	WS: 3 G:10 WSW	WS: 5 G:10 W	WS: 6 G:9 W	WS: 3 G:6 W	WS: 11 G:15 SSE	WS: 11 G:20 S	WS: 7 G:11 SW	WS: 5 G:7 E	WS: 5 G:8 SSE	WS: 3 G:6 S	WS: 3 G:5 S	WS: 2 G:5 SSW	WS: 2 G:4 SSW	WS: 2 G:4 S	WS: 1 G:4 SSW	WS: 1 G:3 SW	WS: 1 G:2 SW	WS: 1 G:2 SW	WS: 1 G:2 SW	WS: 1 G:2 SW	WS: 1 G:3 SW	WS: 2 G:3 SW	WS: 2 G:3 SW	WS: 4 G:5 WNW	WS: 4 G:6 WNW	WS: 4 G:7 WNW	WS: 4 G:8 WNW	WS: 4 G:9 W	WS: 4 G:9 SSE		
Houston Pilots K - Shell Crude	WS: 4 G:13 W	WS: 3 G:11 WSW	WS: 3 G:9 WSW	WS: 2 G:9 WSW	WS: 3 G:13 WSW	WS: 6 G:14 W	WS: 8 G:13 SSW	WS: 4 G:9 WSW	WS: 5 G:10 W	WS: 6 G:9 W	WS: 4 G:6 W	WS: 12 G:15 SSE	WS: 10 G:19 S	WS: 10 G:12 SW	WS: 5 G:7 E	WS: 8 G:8 S	WS: 3 G:6 S	WS: 3 G:6 S	WS: 2 G:5 SSW	WS: 2 G:5 SSW	WS: 2 G:4 S	WS: 1 G:5 SSW	WS: 1 G:4 SW	WS: 1 G:3 SW	WS: 1 G:2 SW	WS: 1 G:2 SW	WS: 1 G:2 SW	WS: 2 G:3 WNW	WS: 2 G:3 WNW	WS: 4 G:5 WNW	WS: 4 G:6 WNW	WS: 4 G:7 WNW	WS: 4 G:8 WNW	WS: 5 G:9 W	WS: 4 G:9 S			
Houston Pilots J - Lynchburg Ferries	WS: 4 G:13 W	WS: 3 G:11 WSW	WS: 2 G:8 WSW	WS: 2 G:8 WSW	WS: 1 G:12 WSW	WS: 5 G:14 W	WS: 4 G:14 SSW	WS: 4 G:9 WSW	WS: 4 G:10 W	WS: 5 G:9 W	WS: 4 G:7 W	WS: 7 G:15 SSE	WS: 8 G:14 S	WS: 4 G:14 SW	WS: 4 G:6 E	WS: 5 G:8 SSE	WS: 3 G:6 S	WS: 4 G:6 SSW	WS: 3 G:5 SSW	WS: 3 G:5 SSW	WS: 2 G:5 S	WS: 2 G:5 S	WS: 2 G:4 SW	WS: 2 G:3 SW	WS: 2 G:2 SW	WS: 2 G:2 SW	WS: 2 G:2 SW	WS: 2 G:3 SW	WS: 3 G:3 WNW	WS: 3 G:4 WNW	WS: 4 G:5 WNW	WS: 4 G:6 WNW	WS: 4 G:7 WNW	WS: 5 G:9 WSW	WS: 5 G:9 WSW	WS: 5 G:9 WSW		
Houston Pilots I - Exxon 3	WS: 3 G:12 W	WS: 3 G:11 WSW	WS: 2 G:9 WSW	WS: 2 G:8 WSW	WS: 2 G:12 WSW	WS: 5 G:14 W	WS: 10 G:17 SW	WS: 5 G:9 WSW	WS: 4 G:9 W	WS: 4 G:8 W	WS: 8 G:8 SSE	WS: 11 G:15 S	WS: 9 G:15 SSW	WS: 14 G:14 W	WS: 3 G:4 SSE	WS: 5 G:8 SSE	WS: 4 G:7 W	WS: 4 G:6 W	WS: 3 G:6 SSW	WS: 3 G:6 SSW	WS: 3 G:6 SSW	WS: 3 G:5 SSW	WS: 3 G:5 SSW	WS: 2 G:4 SW	WS: 2 G:4 SW	WS: 2 G:4 SW	WS: 2 G:4 SW	WS: 2 G:4 SW	WS: 2 G:4 SW	WS: 2 G:4 SW	WS: 4 G:5 WNW	WS: 4 G:6 WNW	WS: 4 G:7 WNW	WS: 4 G:8 WNW	WS: 5 G:9 WSW	WS: 5 G:9 WSW		
Houston Pilots H - Morgans Point	WS: 5 G:12 W	WS: 4 G:11 W	WS: 4 G:11 WSW	WS: 4 G:10 WSW	WS: 3 G:13 WSW	WS: 6 G:14 W	WS: 13 G:19 SW	WS: 6 G:9 WSW	WS: 5 G:9 W	WS: 5 G:8 W	WS: 8 G:8 SSE	WS: 12 G:16 S	WS: 14 G:19 SSW	WS: 10 G:15 WSW	WS: 4 G:5 SSW	WS: 5 G:9 SSW	WS: 5 G:8 SSW	WS: 4 G:7 SSW	WS: 4 G:8 SSW	WS: 4 G:7 SW	WS: 4 G:7 SW	WS: 4 G:7 SW	WS: 4 G:6 SW	WS: 3 G:6 SW	WS: 3 G:6 SW	WS: 3 G:6 SW	WS: 3 G:6 SW	WS: 3 G:6 SW	WS: 3 G:6 SW	WS: 3 G:6 SW	WS: 3 G:6 SW	WS: 4 G:6 WNW	WS: 4 G:6 WNW	WS: 4 G:7 WNW	WS: 4 G:8 WNW	WS: 5 G:9 WSW	WS: 5 G:9 WSW	
Houston Pilots G - 75/76	WS: 8 G:13 WSW	WS: 6 G:11 W	WS: 6 G:12 WSW	WS: 6 G:12 WSW	WS: 6 G:13 WSW	WS: 9 G:14 WSW	WS: 16 G:20 SW	WS: 10 G:12 WSW	WS: 8 G:11 W	WS: 8 G:9 W	WS: 10 G:11 SSE	WS: 12 G:14 SSW	WS: 19 G:23 SSW	WS: 12 G:17 WNW	WS: 5 G:6 W	WS: 10 G:9 W	WS: 6 G:9 W	WS: 6 G:10 W	WS: 6 G:10 W	WS: 6 G:10 W	WS: 6 G:10 W	WS: 6 G:10 W	WS: 6 G:10 W	WS: 6 G:10 W	WS: 6 G:10 W	WS: 6 G:10 W	WS: 6 G:10 W	WS: 6 G:10 W	WS: 6 G:10 W	WS: 6 G:10 W	WS: 6 G:10 W	WS: 6 G:10 W	WS: 6 G:10 W	WS: 6 G:10 W	WS: 6 G:10 W	WS: 6 G:10 W	WS: 6 G:10 W	WS: 6 G:10 W
Houston Pilots F - 63/64	WS: 10 G:16 WSW	WS: 7 G:15 WSW	WS: 7 G:15 WSW	WS: 7 G:15 WSW	WS: 7 G:15 WSW	WS: 9 G:15 SW	WS: 12 G:19 SW	WS: 11 G:18 WSW	WS: 11 G:18 WSW	WS: 8 G:9 S	WS: 11 G:12 S	WS: 9 G:11 SSW	WS: 19 G:22 SSW	WS: 12 G:17 WNW	WS: 6 G:6 W	WS: 6 G:6 W	WS: 6 G:6 W	WS: 6 G:6 W	WS: 6 G:6 W	WS: 6 G:6 W	WS: 6 G:6 W	WS: 6 G:6 W	WS: 6 G:6 W	WS: 6 G:6 W	WS: 6 G:6 W	WS: 6 G:6 W	WS: 6 G:6 W	WS: 6 G:6 W	WS: 6 G:6 W	WS: 6 G:6 W	WS: 6 G:6 W	WS: 6 G:6 W	WS: 6 G:6 W	WS: 6 G:6 W	WS: 6 G:6 W	WS: 6 G:6 W	WS: 6 G:6 W	WS: 6 G:6 W
Houston Pilots E - 51/52	WS: 11 G:17 WSW	WS: 9 G:15 WSW	WS: 8 G:13 WSW	WS: 7 G:14 WSW	WS: 8 G:14 WSW	WS: 11 G:16 WSW	WS: 18 G:20 W	WS: 11 G:17 WSW	WS: 11 G:14 W	WS: 11 G:13 W	WS: 12 G:13 W	WS: 10 G:10 W	WS: 19 G:21 SW	WS: 12 G:17 W	WS: 8 G:10 W	WS: 7 G:10 W	WS: 6 G:10 W	WS: 7 G:11 W	WS: 7 G:11 W	WS: 6 G:10 W	WS: 6 G:10 W	WS: 6 G:10 W	WS: 6 G:10 W	WS: 6 G:10 W	WS: 6 G:10 W	WS: 6 G:10 W	WS: 6 G:10 W	WS: 6 G:10 W	WS: 6 G:10 W	WS: 6 G:10 W	WS: 6 G:10 W	WS: 6 G:10 W	WS: 6 G:10 W	WS: 6 G:10 W	WS: 6 G:10 W	WS: 6 G:10 W	WS: 6 G:10 W	WS: 6 G:10 W
Houston Pilots D - 37/38	WS: 12 G:18 SW	WS: 9 G:15 SW	WS: 9 G:14 WSW	WS: 8 G:14 WSW	WS: 8 G:15 WSW	WS: 14 G:18 W	WS: 16 G:18 W	WS: 8 G:14 WSW	WS: 10 G:14 WSW	WS: 17 G:19 W	WS: 12 G:14 W	WS: 6 G:11 W	WS: 18 G:20 SW	WS: 12 G:16 SW	WS: 8 G:11 W	WS: 7 G:10 W	WS: 7 G:10 W	WS: 7 G:10 W	WS: 7 G:10 W	WS: 7 G:10 W	WS: 6 G:10 W	WS: 6 G:10 W	WS: 6 G:10 W	WS: 6 G:10 W	WS: 6 G:10 W	WS: 6 G:10 W	WS: 6 G:10 W	WS: 6 G:10 W	WS: 6 G:10 W	WS: 6 G:10 W	WS: 6 G:10 W	WS: 6 G:10 W	WS: 6 G:10 W	WS: 6 G:10 W	WS: 6 G:10 W	WS: 6 G:10 W	WS: 6 G:10 W	WS: 6 G:10 W
Houston Pilots C - 25/26	WS: 11 G:18 SW	WS: 8 G:14 WSW	WS: 8 G:14 WSW	WS: 8 G:15 WSW	WS: 9 G:15 WSW	WS: 13 G:18 W	WS: 14 G:17 W	WS: 7 G:12 W	WS: 8 G:14 W	WS: 17 G:20 W	WS: 13 G:11 W	WS: 7 G:10 W	WS: 10 G:20 SW	WS: 17 G:14 W	WS: 7 G:12 W	WS: 7 G:9 W	WS: 6 G:10 W	WS: 6 G:10 W	WS: 6 G:10 W	WS: 6 G:10 W	WS: 6 G:10 W	WS: 6 G:10 W	WS: 6 G:10 W	WS: 6 G:10 W	WS: 6 G:10 W	WS: 6 G:10 W	WS: 6 G:10 W	WS: 6 G:10 W	WS: 6 G:10 W	WS: 6 G:10 W	WS: 6 G:10 W	WS: 6 G:10 W	WS: 6 G:10 W	WS: 6 G:10 W	WS: 6 G:10 W	WS: 6 G:10 W	WS: 6 G:10 W	WS: 6 G:10 W
Houston Pilots B - 11/12	WS: 12 G:18 SW	WS: 9 G:14 WSW	WS: 8 G:14 WSW	WS: 8 G:15 WSW	WS: 9 G:15 WSW	WS: 12 G:18 W	WS: 12 G:16 W	WS: 8 G:14 WSW	WS: 10 G:14 WSW	WS: 16 G:19 W	WS: 12 G:14 W	WS: 10 G:13 W	WS: 16 G:20 W	WS: 14 G:14 W	WS: 7 G:12 W	WS: 7 G:10 W	WS: 7 G:10 W	WS: 7 G:10 W	WS: 7 G:10 W	WS: 7 G:10 W	WS: 7 G:10 W	WS: 7 G:10 W	WS: 7 G:10 W	WS: 7 G:10 W	WS: 7 G:10 W	WS: 7 G:10 W	WS: 7 G:10 W	WS: 7 G:10 W	WS: 7 G:10 W	WS: 7 G:10 W	WS: 7 G:10 W	WS: 7 G:10 W	WS: 7 G:10 W	WS: 7 G:10 W	WS: 7 G:10 W	WS: 7 G:10 W	WS: 7 G:10 W	WS: 7 G:10 W
Houston Pilots A - 1 & 2 Bravo	WS: 14 G:17 SW	WS: 13 G:16 SW	WS: 13 G:16 SW	WS: 12 G:15 SW	WS: 13 G:16 SW	WS: 15 G:18 W	WS: 13 G:16 W	WS: 13 G:15 WNW	WS: 6 G:12 W	WS: 16 G:18 SW	WS: 15 G:17 SW	WS: 15 G:17 SW	WS: 16 G:18 W	WS: 17 G:18 W	WS: 11 G:14 W	WS: 8 G:10 W	WS: 8 G:11 W	WS: 8 G:11 W	WS: 8 G:11 W	WS: 8 G:11 W	WS: 8 G:11 W	WS: 8 G:11 W	WS: 8 G:11 W	WS: 8 G:11 W	WS: 8 G:11 W	WS: 8 G:11 W	WS: 8 G:11 W	WS: 8 G:11 W	WS: 8 G:11 W	WS: 8 G:11 W	WS: 8 G:11 W	WS: 8 G:11 W	WS: 8 G:11 W	WS: 8 G:11 W	WS: 8 G:11 W	WS: 8 G:11 W	WS: 8 G:11 W	WS: 8 G:11 W

See slides below for official thoughts on winds.

Houston Pilots: Wed. 8/24/2022



Forecast Discussion

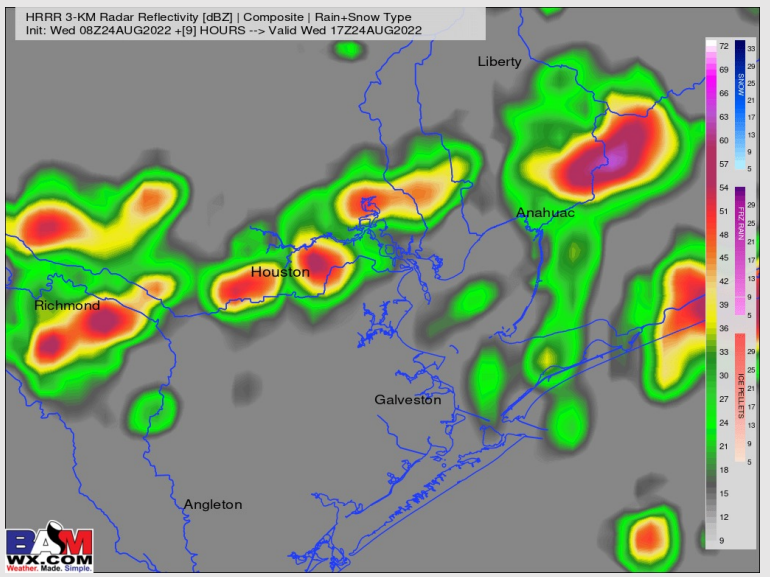
Precip: Scattered showers/storms will be the theme through the day today. There will be breaks here and there between pockets of precipitation, however, there looks to be better coverage of precip out through 6-7 PM before chances/coverage weakens some. Chances of seeing rain on the day 80%. Pockets of moderate to heavy rain will be possible with lightning.

Wind: Winds will generally be out of the WSW at 10-15 MPH with gusts 15-20 MPH possible near the boarding station for much of the day. Pockets of precip may offer up slightly higher wind gusts of 25-30 MPH at times. Given the on/off nature of precip, winds will likely vary a bit in speeds.

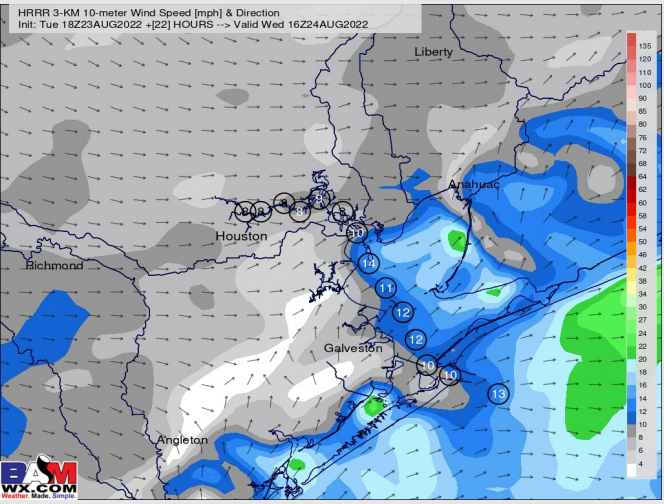
Temps: High temps today in the mid 80s F near the boarding station and in the upper 80s F at all other stations.

Visibility: Not anticipating fog concerns at this time, but heavier pulses of rain can reduce visibility.

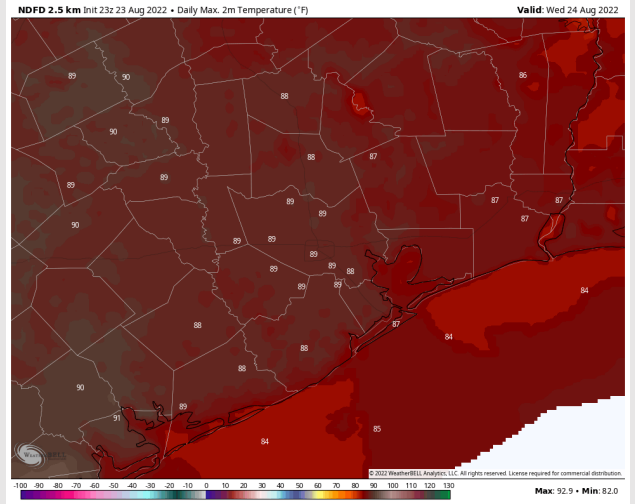
Precip Forecast: 12 PM CT



Wind Speed
11 AM CT



High Temps



Houston Pilots: Thurs. 8/25/2022



Forecast Discussion

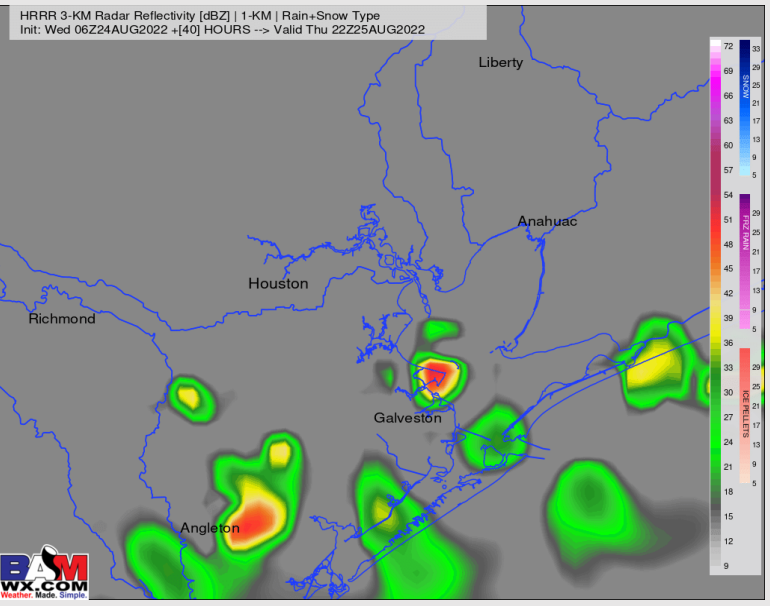
Precip: While precip likely lets up for the overnight hours into very early Thu AM, there will still be a 20% chance of an isolated shower/t-storm. Scattered showers/storms chances then pick back up throughout the day. Chances of storms will be around 30% starting at 8 AM and increase to 50-60% starting around 1 PM and last throughout the afternoon at the boarding station. Pockets of moderate to heavy rain and lighting will be possible.

Wind: Sustained winds in the AM out of the S/SW at 8-13 MPH. near the boarding station. Winds lighter north of the boarding station at 3-7 MPH. After 7AM, winds shift to out of the W at 5-10 MPH around the Houston Metro Area, with stronger winds near the boarding station sustained at 10-15 MPH. Gusts of 20-25 MPH will be possible under heavier pulses of rain, however this is not expected to be widespread.

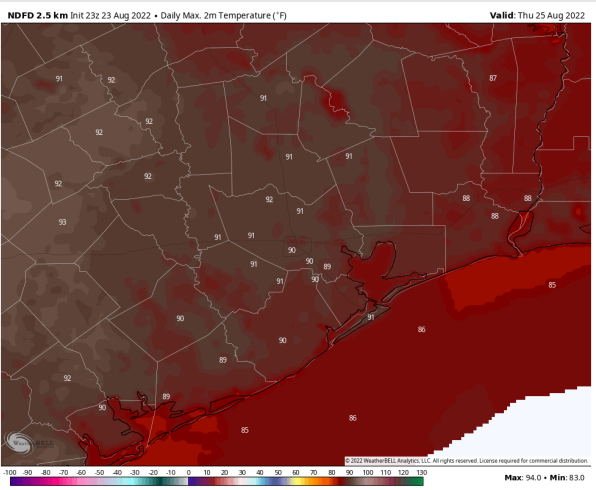
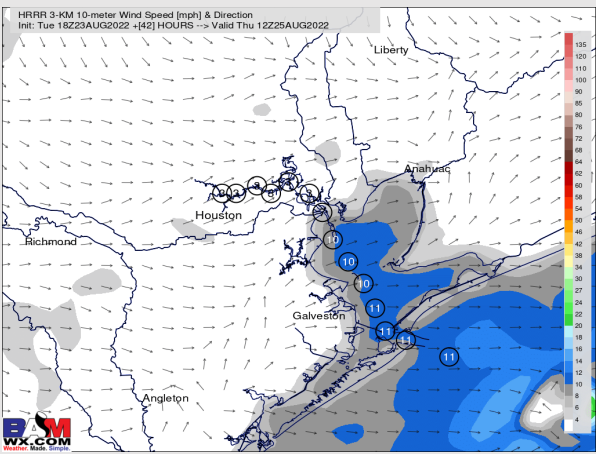
Temps: High temps Thursday in the mid 80s near the boarding point and upper 80s to low 90s for all other stations.

Visibility: Not anticipating fog concerns at this time.

Precip Forecast: 4 PM CT



Wind Speed
7 AM CT



High Temps
Thu

Houston Pilots: Fri. 8/26/2022

Forecast Discussion

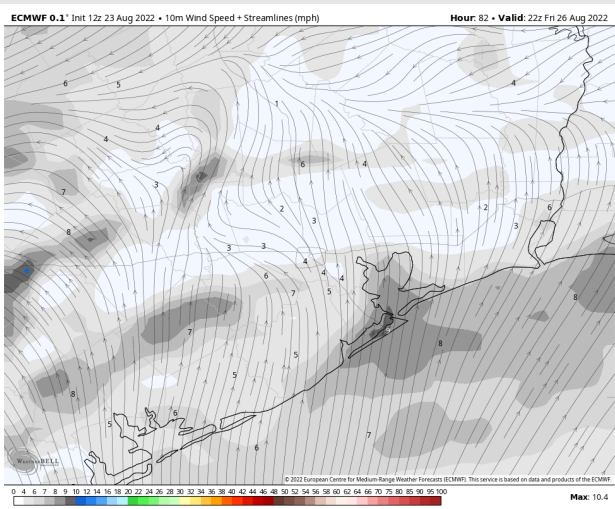
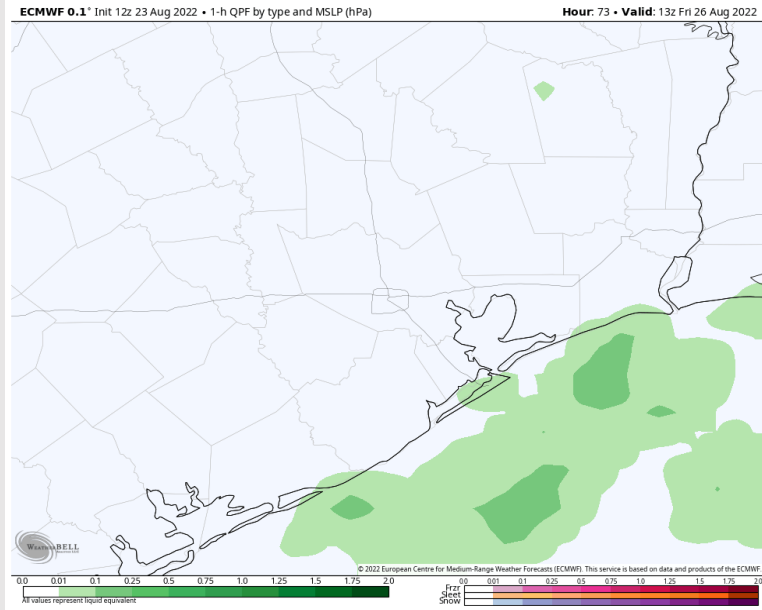
Precip: Chances of scattered rainfall/storms south of Morgan's Point during the AM hours. Some isolated showers/storms in the early afternoon closer toward the HOU Metro area, with better chances of rain in the late afternoon to evening timeframe.

Wind: Winds start out of the WSW in the early morning hours. They will veer to come out of the NE around noon and SE in the mid-afternoon. Winds will be calmer at 5-10 MPH until around 3 PM, then increase to 8-13 MPH.

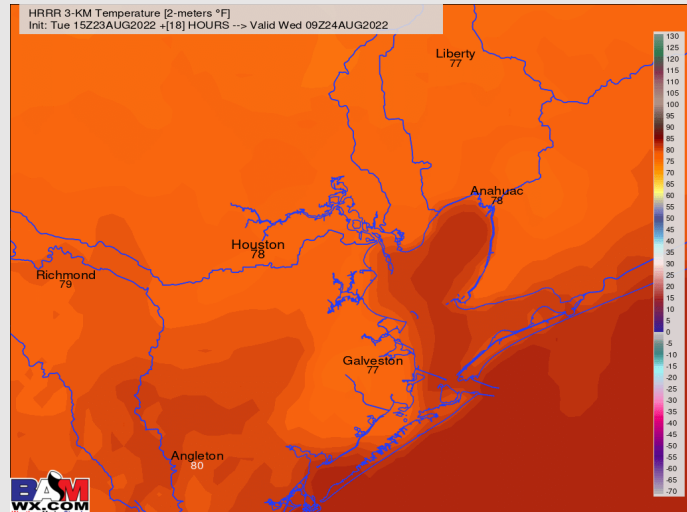
Temps: Highs on Friday will be in the lower 90s for most places and mid 80s near the boarding station.

Visibility: Not anticipating fog concerns at this time.

Precip Forecast: 8 AM CT

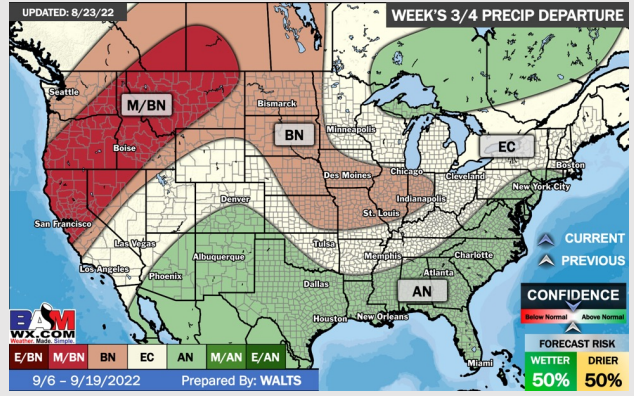
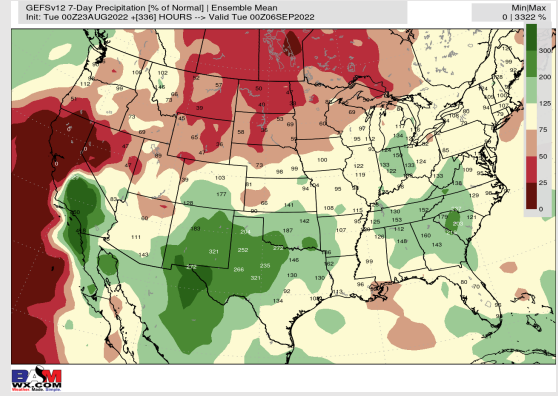
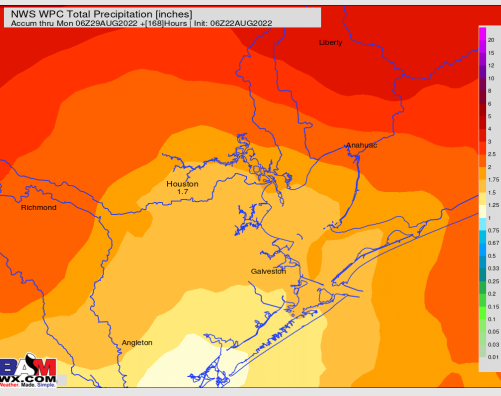
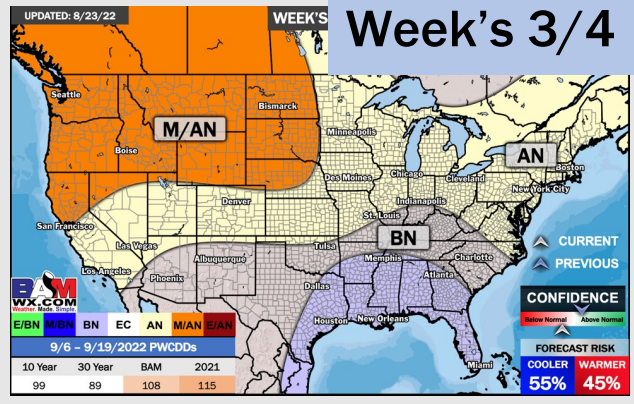
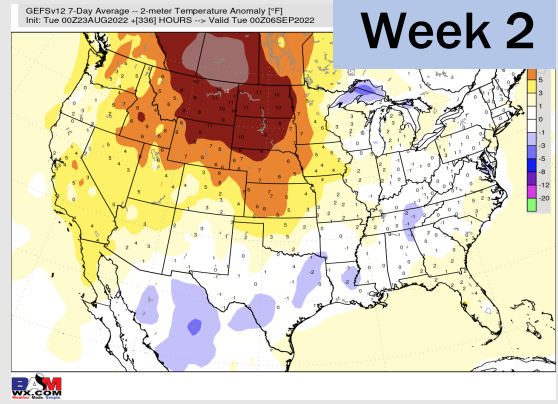
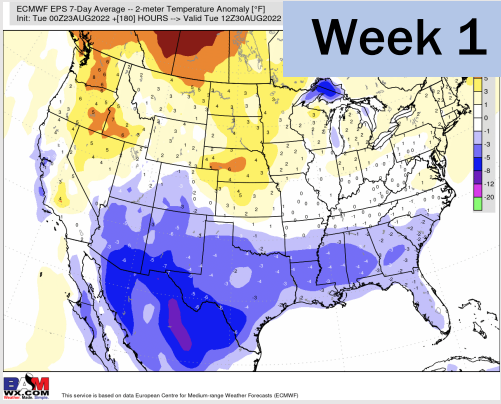


Wind Speed
5 PM CT



High Temps
FRI

Houston Pilots: 8/24/22



- Temperatures expected to be below normal this week. Increased rainfall chances as storms move through the area the next several days.
- Week 2 likely features near normal temperatures and near normal precipitation.
- The weeks ¾ timeframe into mid September looks to feature below normal temperatures and above normal risks for precip.