

Houston Pilots Forecast Package

Houston Pilots

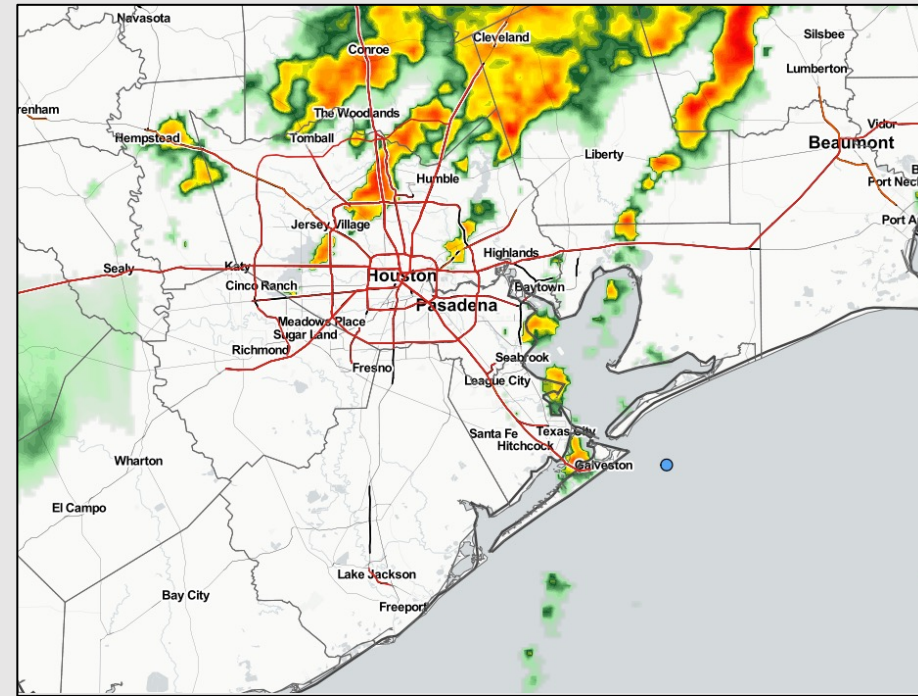
Updated: 5:00 AM CT

Tuesday, August 23, 2022

Forecaster: Vince Bryan

Weather Headlines

- Increasing hit or miss storm activity will continue the next few days. A stronger storm with lightning and wind gusts 20-30 MPH will be the primary hazards.
- No tropical threat for Houston expected over the next 7-10 days, however we are keeping tabs on the Atlantic as noted on slides below.
- Active pattern looks to continue into the weekend with daily precip chances.

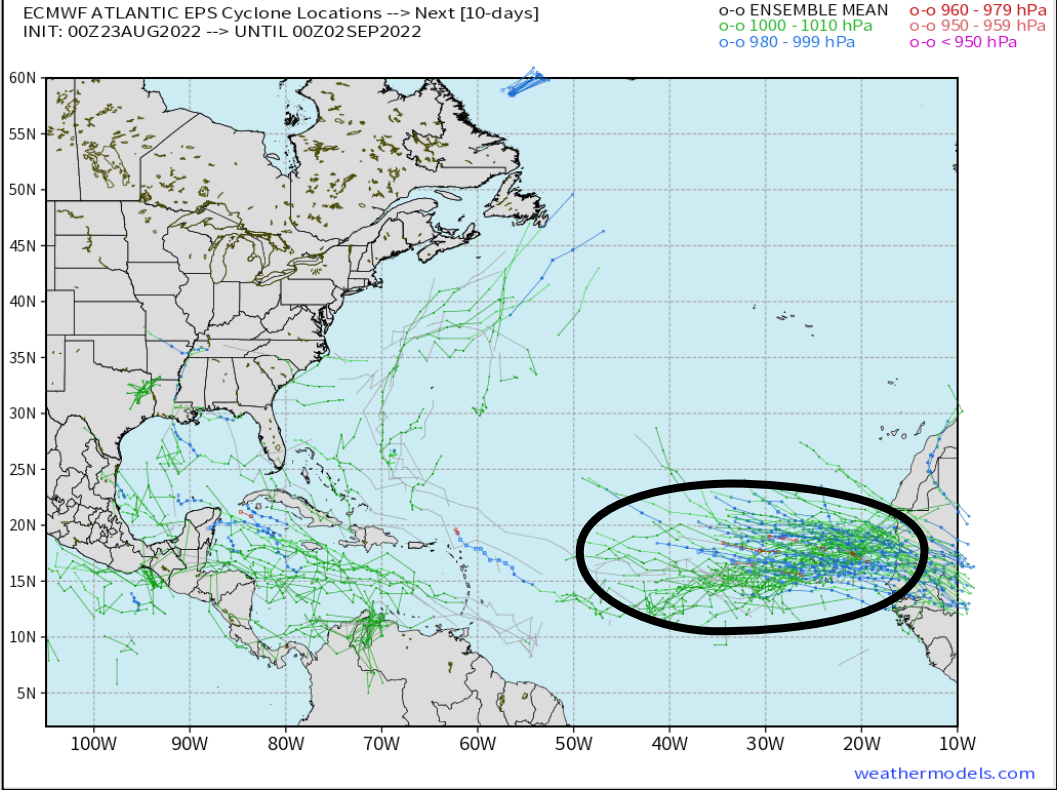


Radar/ NWS Alerts: 5:00 AM CT



As always, please do not hesitate to reach out to us with any forecast questions via the chat option on the Weather Porthole or our on-call number, **(317)-560-8122** press 1 for forecast questions.

Various model tracks next 10 days



No tropical threat for Houston expected over the next 7-10+ days, however there are some suggestions that the Atlantic may try and become a bit more active here over the next 1-2 weeks. Something we will be watching for any implications into early Sep.

Confidence

Above Normal Below Normal

Houston Pilots Wind Report



Example

Sustained wind 13 MPH
Gusts 18 MPH
Wind from the N

WS: 13
G:18
N

Time	08-23-2022 Tue 3am	08-23-2022 Tue 4am	08-23-2022 Tue 5am	08-23-2022 Tue 6am	08-23-2022 Tue 7am	08-23-2022 Tue 8am	08-23-2022 Tue 9am	08-23-2022 Tue 10am	08-23-2022 Tue 11am	08-23-2022 Tue 12pm	08-23-2022 Tue 1pm	08-23-2022 Tue 2pm	08-23-2022 Tue 3pm	08-23-2022 Tue 4pm	08-23-2022 Tue 5pm	08-23-2022 Tue 6pm	08-23-2022 Tue 7pm	08-23-2022 Tue 8pm	08-23-2022 Tue 9pm	08-23-2022 Tue 10pm	08-23-2022 Tue 11pm	08-24-2022 Wed 12am	08-24-2022 Wed 1am	08-24-2022 Wed 2am	08-24-2022 Wed 3am	08-24-2022 Wed 4am	08-24-2022 Wed 5am	08-24-2022 Wed 6am	08-24-2022 Wed 7am	08-24-2022 Wed 8am	08-24-2022 Wed 9am	08-24-2022 Wed 10am	08-24-2022 Wed 11am	08-24-2022 Wed 12pm	08-24-2022 Wed 1pm	08-24-2022 Wed 2pm
Houston Pilots N - 610 Bridge	WS: 5 G:15 SSW	WS: 4 G:11 SSW	WS: 4 G:11 SW	WS: 4 G:12 SW	WS: 4 G:12 WSW	WS: 4 G:12 WSW	WS: 5 G:12 W	WS: 5 G:13 WSW	WS: 6 G:14 WSW	WS: 4 G:11 W	WS: 4 G:8 NNW	WS: 6 G:9 S	WS: 2 G:6 ESE	WS: 10 G:15 WSW	WS: 5 G:11 SSW	WS: 5 G:11 S	WS: 5 G:9 SSE	WS: 5 G:9 S	WS: 4 G:8 S	WS: 4 G:8 S	WS: 3 G:7 S	WS: 3 G:6 S	WS: 3 G:6 SSW	WS: 3 G:6 SSW	WS: 3 G:7 SSW	WS: 3 G:7 SW	WS: 3 G:8 SW	WS: 3 G:8 SW	WS: 3 G:9 SW	WS: 6 G:10 WSW	WS: 6 G:11 WSW	WS: 6 G:12 WSW	WS: 6 G:12 WSW	WS: 7 G:13 WSW	WS: 5 G:13 W	
Houston Pilots M - Kinder 1	WS: 5 G:15 SSW	WS: 4 G:12 SSW	WS: 4 G:12 SW	WS: 4 G:12 SW	WS: 4 G:12 WSW	WS: 4 G:12 WSW	WS: 5 G:12 W	WS: 5 G:13 WSW	WS: 6 G:13 WSW	WS: 4 G:12 W	WS: 4 G:9 NNW	WS: 8 G:12 SW	WS: 2 G:6 SSE	WS: 9 G:14 W	WS: 5 G:11 S	WS: 5 G:10 S	WS: 5 G:9 SSE	WS: 5 G:9 S	WS: 4 G:9 S	WS: 4 G:8 S	WS: 3 G:7 S	WS: 3 G:6 S	WS: 3 G:6 SSW	WS: 3 G:6 SSW	WS: 3 G:6 SSW	WS: 3 G:6 SSW	WS: 3 G:6 SSW	WS: 3 G:7 SSW	WS: 3 G:7 SSW	WS: 3 G:9 SSW	WS: 6 G:10 WSW	WS: 6 G:11 WSW	WS: 6 G:12 WSW	WS: 6 G:12 WSW	WS: 7 G:13 WSW	WS: 5 G:12 SSW
Houston Pilots L - Greens Bayou	WS: 6 G:16 SSW	WS: 4 G:13 SSW	WS: 4 G:13 SW	WS: 4 G:12 SW	WS: 4 G:13 WSW	WS: 4 G:13 WSW	WS: 5 G:12 WSW	WS: 5 G:13 WSW	WS: 5 G:13 WSW	WS: 4 G:13 NNW	WS: 5 G:9 NNW	WS: 10 G:14 W	WS: 2 G:7 SSW	WS: 5 G:10 W	WS: 5 G:11 S	WS: 6 G:11 SSE	WS: 5 G:9 SSE	WS: 5 G:9 S	WS: 4 G:9 S	WS: 4 G:7 S	WS: 3 G:7 S	WS: 3 G:6 S	WS: 3 G:6 SSW	WS: 3 G:6 SSW	WS: 2 G:6 SSW	WS: 3 G:6 SSW	WS: 3 G:7 SSW	WS: 3 G:7 SSW	WS: 3 G:9 SSW	WS: 6 G:10 WSW	WS: 6 G:11 WSW	WS: 6 G:12 WSW	WS: 6 G:12 WSW	WS: 7 G:13 WSW	WS: 5 G:12 SSW	
Houston Pilots K - Shell Crude	WS: 6 G:17 SSW	WS: 4 G:14 SSW	WS: 5 G:14 SW	WS: 4 G:13 SW	WS: 4 G:14 WSW	WS: 5 G:14 WSW	WS: 5 G:13 WSW	WS: 6 G:14 WSW	WS: 5 G:13 W	WS: 5 G:11 NNW	WS: 6 G:11 NNW	WS: 10 G:14 WNW	WS: 3 G:6 W	WS: 4 G:8 WNW	WS: 6 G:11 S	WS: 6 G:10 SSE	WS: 5 G:9 SSE	WS: 5 G:9 S	WS: 4 G:9 S	WS: 4 G:8 S	WS: 3 G:7 S	WS: 3 G:7 S	WS: 3 G:6 SSW	WS: 3 G:6 SSW	WS: 3 G:6 SSW	WS: 3 G:6 SSW	WS: 3 G:7 SSW	WS: 4 G:8 SSW	WS: 6 G:11 WSW	WS: 6 G:11 WSW	WS: 6 G:12 WSW	WS: 6 G:12 WSW	WS: 7 G:13 WSW	WS: 5 G:12 SSW		
Houston Pilots J - Lynchburg Ferries	WS: 5 G:16 SSW	WS: 5 G:15 SSW	WS: 4 G:14 SW	WS: 4 G:13 SSW	WS: 4 G:12 WSW	WS: 5 G:14 WSW	WS: 5 G:11 WSW	WS: 5 G:13 WSW	WS: 6 G:14 WSW	WS: 6 G:12 NNW	WS: 7 G:10 NNW	WS: 9 G:13 WNW	WS: 4 G:8 W	WS: 3 G:6 WNW	WS: 7 G:11 SSE	WS: 5 G:9 SSE	WS: 5 G:9 S	WS: 5 G:9 S	WS: 5 G:9 S	WS: 4 G:8 S	WS: 4 G:8 S	WS: 4 G:8 S	WS: 3 G:7 S	WS: 3 G:7 SSW	WS: 4 G:7 SSW	WS: 4 G:7 SSW	WS: 3 G:7 SSW	WS: 4 G:9 SSW	WS: 4 G:9 SSW	WS: 4 G:9 SSW	WS: 6 G:11 WSW	WS: 6 G:11 WSW	WS: 6 G:12 WSW	WS: 6 G:12 WSW	WS: 7 G:13 WSW	WS: 5 G:11 S
Houston Pilots I - Exxon 3	WS: 6 G:17 SSW	WS: 6 G:17 SSW	WS: 6 G:17 SSW	WS: 5 G:14 SW	WS: 4 G:12 SW	WS: 5 G:15 WSW	WS: 5 G:12 WSW	WS: 6 G:13 WSW	WS: 6 G:14 WSW	WS: 6 G:13 W	WS: 6 G:11 NNW	WS: 7 G:10 NNW	WS: 6 G:8 NNW	WS: 6 G:8 SSW	WS: 2 G:4 SSW	WS: 7 G:11 SSE	WS: 6 G:9 SSE	WS: 5 G:9 S	WS: 5 G:10 S	WS: 5 G:9 S	WS: 5 G:9 S	WS: 5 G:9 S	WS: 5 G:9 S	WS: 4 G:9 SSW	WS: 4 G:9 SSW	WS: 4 G:9 SSW	WS: 4 G:9 SSW	WS: 4 G:9 SSW	WS: 4 G:9 SSW	WS: 6 G:11 WSW	WS: 6 G:11 WSW	WS: 6 G:12 WSW	WS: 6 G:12 WSW	WS: 7 G:13 WSW	WS: 6 G:11 S	
Houston Pilots H - Morgans Point	WS: 9 G:19 SSW	WS: 9 G:19 SSW	WS: 10 G:20 SSW	WS: 8 G:15 SW	WS: 6 G:14 SW	WS: 6 G:16 WSW	WS: 6 G:14 WSW	WS: 6 G:14 W	WS: 7 G:13 W	WS: 7 G:12 W	WS: 6 G:10 WNW	WS: 5 G:8 WNW	WS: 5 G:7 WSW	WS: 5 G:7 WSW	WS: 3 G:4 E	WS: 7 G:11 SSE	WS: 6 G:10 S	WS: 6 G:10 S	WS: 6 G:10 S	WS: 6 G:10 S	WS: 6 G:10 S	WS: 6 G:11 S	WS: 6 G:11 SSW	WS: 5 G:11 SSW	WS: 5 G:11 SSW	WS: 5 G:11 SSW	WS: 5 G:11 SSW	WS: 5 G:11 SSW	WS: 5 G:11 SSW	WS: 6 G:11 WSW	WS: 6 G:11 WSW	WS: 6 G:12 WSW	WS: 6 G:12 WSW	WS: 7 G:13 WSW	WS: 6 G:11 S	
Houston Pilots G - 75/76	WS: 13 G:21 SSW	WS: 13 G:20 SSW	WS: 15 G:20 SSW	WS: 12 G:17 SW	WS: 10 G:16 SW	WS: 10 G:17 WSW	WS: 9 G:16 WSW	WS: 9 G:15 WSW	WS: 8 G:13 WSW	WS: 7 G:12 W	WS: 5 G:10 W	WS: 4 G:8 SSW	WS: 4 G:8 E	WS: 6 G:6 E	WS: 7 G:11 SSE	WS: 8 G:11 SSE	WS: 7 G:11 S	WS: 8 G:12 S	WS: 8 G:13 S	WS: 8 G:13 S	WS: 8 G:13 S	WS: 8 G:13 S	WS: 8 G:14 S	WS: 8 G:13 S	WS: 7 G:13 SSW	WS: 7 G:13 SSW	WS: 7 G:13 SSW	WS: 7 G:13 SSW	WS: 7 G:13 SSW	WS: 7 G:12 WSW	WS: 7 G:12 WSW	WS: 7 G:12 WSW	WS: 7 G:12 WSW	WS: 7 G:12 WSW	WS: 6 G:11 S	
Houston Pilots F - 63/64	WS: 14 G:21 SSW	WS: 13 G:20 SSW	WS: 15 G:20 SSW	WS: 13 G:20 SW	WS: 11 G:17 SW	WS: 11 G:17 WSW	WS: 10 G:16 WSW	WS: 10 G:16 WSW	WS: 10 G:15 WSW	WS: 9 G:13 W	WS: 5 G:11 SW	WS: 2 G:8 SSE	WS: 4 G:7 SSE	WS: 7 G:11 SSE	WS: 8 G:11 SSE	WS: 8 G:11 SSE	WS: 7 G:11 S	WS: 8 G:12 S	WS: 8 G:13 S	WS: 8 G:13 S	WS: 8 G:14 S	WS: 10 G:14 S	WS: 10 G:14 S	WS: 9 G:14 S	WS: 9 G:15 SSW	WS: 9 G:15 SSW	WS: 9 G:14 SSW	WS: 9 G:14 SSW	WS: 9 G:14 SSW	WS: 9 G:14 SSW	WS: 9 G:14 SSW	WS: 8 G:13 WSW	WS: 8 G:13 WSW	WS: 8 G:13 WSW	WS: 7 G:12 WSW	WS: 7 G:11 S
Houston Pilots E - 51/52	WS: 14 G:21 SSW	WS: 13 G:20 SSW	WS: 15 G:21 SSW	WS: 13 G:20 SW	WS: 11 G:17 SW	WS: 10 G:17 WSW	WS: 10 G:16 WSW	WS: 10 G:15 WSW	WS: 9 G:13 W	WS: 7 G:12 W	WS: 3 G:10 WNW	WS: 2 G:8 SSE	WS: 3 G:10 SSE	WS: 7 G:11 SSE	WS: 8 G:11 SSE	WS: 8 G:11 SSE	WS: 7 G:12 S	WS: 8 G:12 S	WS: 8 G:13 S	WS: 8 G:13 S	WS: 9 G:14 S	WS: 9 G:14 S	WS: 10 G:14 S	WS: 10 G:14 S	WS: 10 G:15 SSW	WS: 10 G:15 SSW	WS: 9 G:14 SSW	WS: 9 G:14 SSW	WS: 9 G:14 SSW	WS: 9 G:14 SSW	WS: 9 G:14 SSW	WS: 8 G:13 WSW	WS: 8 G:13 WSW	WS: 8 G:13 WSW	WS: 7 G:12 WSW	WS: 7 G:11 S
Houston Pilots D - 37/38	WS: 14 G:20 SSW	WS: 14 G:20 SSW	WS: 14 G:20 SSW	WS: 11 G:19 SW	WS: 10 G:17 SW	WS: 11 G:17 WSW	WS: 10 G:16 WSW	WS: 10 G:16 WSW	WS: 10 G:15 WSW	WS: 9 G:13 W	WS: 8 G:12 W	WS: 4 G:9 WNW	WS: 2 G:8 SSE	WS: 5 G:8 SSE	WS: 6 G:7 SSE	WS: 8 G:12 S	WS: 8 G:12 S	WS: 9 G:13 S	WS: 10 G:14 S	WS: 10 G:14 S	WS: 10 G:14 S	WS: 10 G:14 S	WS: 11 G:15 S	WS: 11 G:15 SSW	WS: 10 G:15 SSW	WS: 10 G:15 SSW	WS: 10 G:15 SSW	WS: 10 G:15 SSW	WS: 10 G:14 SSW	WS: 10 G:14 SSW	WS: 10 G:14 SSW	WS: 9 G:14 SSW	WS: 8 G:13 WSW	WS: 8 G:13 WSW	WS: 7 G:12 WSW	WS: 8 G:12 SSW
Houston Pilots C - 25/26	WS: 12 G:19 SSW	WS: 13 G:19 SSW	WS: 13 G:19 SSW	WS: 11 G:17 SW	WS: 9 G:17 SW	WS: 9 G:17 WSW	WS: 10 G:16 WSW	WS: 10 G:16 WSW	WS: 9 G:13 WSW	WS: 8 G:10 W	WS: 8 G:11 W	WS: 3 G:9 W	WS: 3 G:6 S	WS: 4 G:7 SSE	WS: 8 G:12 S	WS: 8 G:12 S	WS: 8 G:13 S	WS: 10 G:14 S	WS: 10 G:14 S	WS: 10 G:14 S	WS: 10 G:14 S	WS: 11 G:15 S	WS: 11 G:15 SSW	WS: 11 G:15 SSW	WS: 11 G:15 SSW	WS: 11 G:15 SSW	WS: 11 G:15 SSW	WS: 10 G:14 SSW	WS: 10 G:14 SSW	WS: 10 G:14 SSW	WS: 9 G:14 SSW	WS: 8 G:13 WSW	WS: 8 G:13 WSW	WS: 8 G:13 WSW	WS: 8 G:12 WSW	WS: 8 G:13 WSW
Houston Pilots B - 11/12	WS: 13 G:20 SSW	WS: 13 G:20 SSW	WS: 13 G:19 SSW	WS: 15 G:23 SW	WS: 11 G:18 SW	WS: 10 G:17 WSW	WS: 10 G:16 WSW	WS: 10 G:16 WSW	WS: 10 G:14 WSW	WS: 10 G:11 WSW	WS: 8 G:10 W	WS: 5 G:9 WSW	WS: 8 G:8 SSW	WS: 5 G:7 SSW	WS: 8 G:12 SSW	WS: 8 G:12 S	WS: 9 G:13 S	WS: 10 G:14 S	WS: 10 G:14 S	WS: 10 G:14 S	WS: 11 G:15 S	WS: 11 G:15 SSW	WS: 11 G:15 SSW	WS: 11 G:15 SSW	WS: 11 G:15 SSW	WS: 11 G:15 SSW	WS: 10 G:14 SSW	WS: 10 G:14 SSW	WS: 10 G:14 SSW	WS: 9 G:14 SSW	WS: 8 G:13 WSW	WS: 8 G:13 WSW	WS: 8 G:13 WSW	WS: 8 G:13 WSW	WS: 8 G:13 WSW	WS: 9 G:14 SSW
Houston Pilots A - 1 & 2 Bravo	WS: 17 G:20 SSW	WS: 17 G:20 SSW	WS: 17 G:20 SSW	WS: 19 G:22 SW	WS: 16 G:19 SW	WS: 16 G:19 WSW	WS: 15 G:18 WSW	WS: 14 G:18 WSW	WS: 12 G:16 WSW	WS: 11 G:15 WSW	WS: 11 G:13 WSW	WS: 7 G:11 WSW	WS: 6 G:10 SSW	WS: 8 G:12 SSW	WS: 9 G:13 SSW	WS: 9 G:13 S	WS: 10 G:14 S	WS: 11 G:15 S	WS: 12 G:16 S	WS: 12 G:16 S	WS: 13 G:17 S	WS: 13 G:17 S	WS: 13 G:17 S	WS: 13 G:17 S	WS: 13 G:17 S	WS: 12 G:16 SSW	WS: 12 G:16 SSW	WS: 12 G:16 SSW	WS: 12 G:16 SSW	WS: 12 G:16 SSW	WS: 11 G:15 WSW	WS: 9 G:14 WSW	WS: 9 G:13 WSW	WS: 9 G:13 WSW	WS: 8 G:12 WSW	WS: 9 G:12 SSW

See slides below for official thoughts on winds.

Houston Pilots: Tue. 8/23/2022



Forecast Discussion

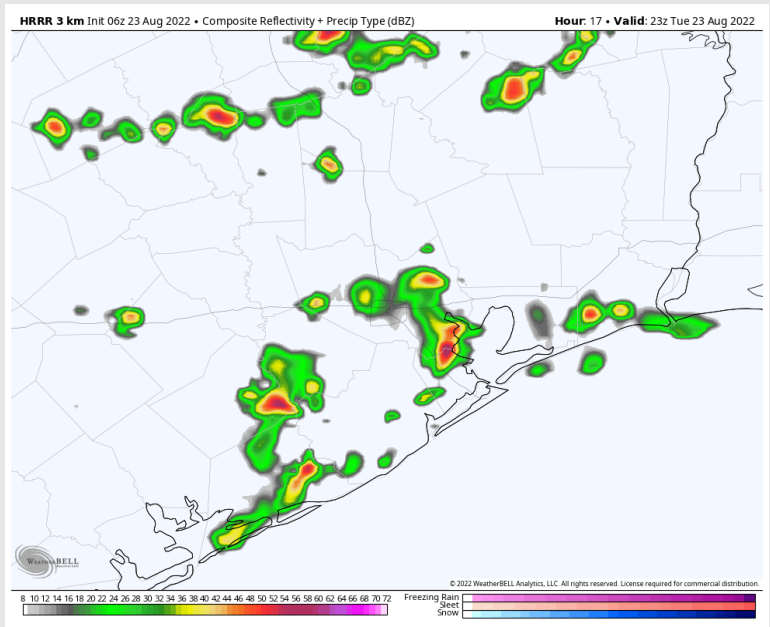
Precip: Latest data has trended a good bit weaker with PM rain chances/ less widespread coverage. Through the majority of the day, there will be 30-40% chances of scattered showers/t-storms. There will be plenty of dry time between rounds of precip, but will not be a completely dry day. Biggest risks will be locally heavy rainfall and lightning inside of any cells. Coverage likely starts to fade near sunset.

Wind: Sustained winds at the boarding station will continue 15-20 MPH out of the S/SSW Tuesday AM, until ~7AM when winds begin to veer out of the SW. Winds north of Morgan's Point 5-10 MPH before increasing into the afternoon hours with precip to 10-15 MPH. A few gusts of 20-25 MPH will be possible at the boarding station through Noon, before sustained winds are 10-15 MPH with gusts 15-20 MPH possible (locally higher under heavier precip).

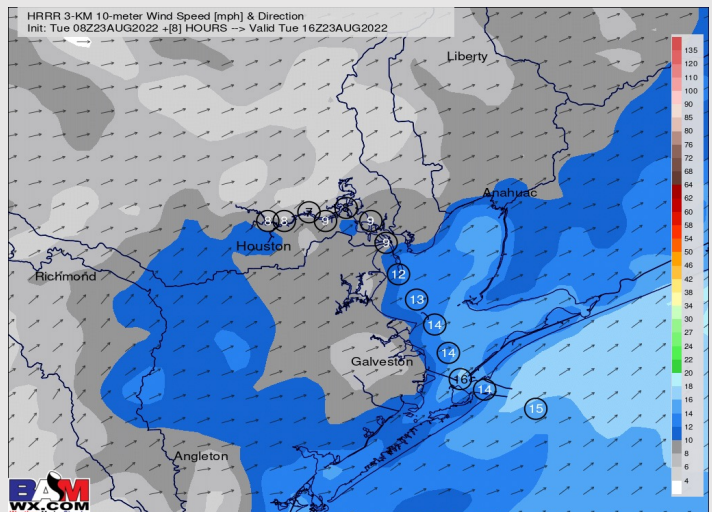
Temps: High temps in the mid to upper 80s F for all stations.

Visibility: Not anticipating fog concerns at this time, however anticipating reduced visibility in the PM will be possible under any heavier pockets of rain.

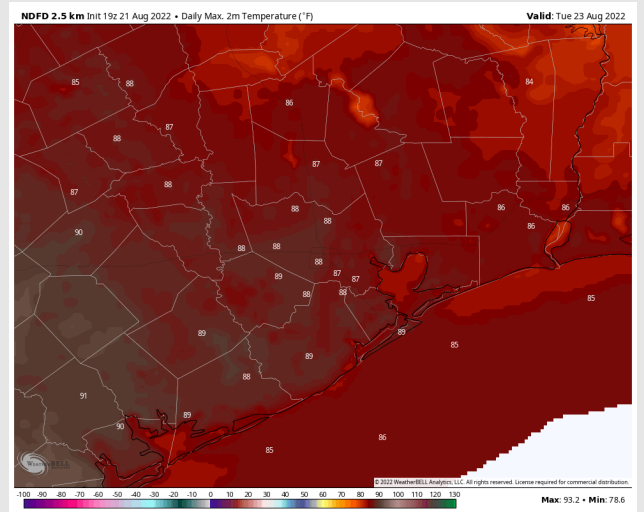
Precip Forecast: 5 PM CT



Wind Speed 10 AM CT



High Temps TUE



Houston Pilots: Wed. 8/24/2022



Forecast Discussion

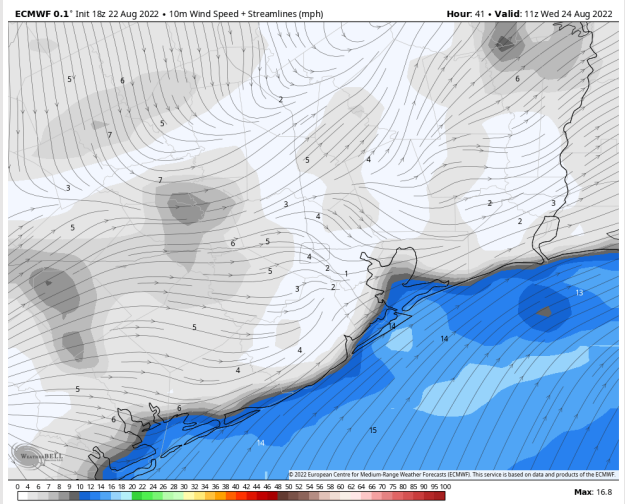
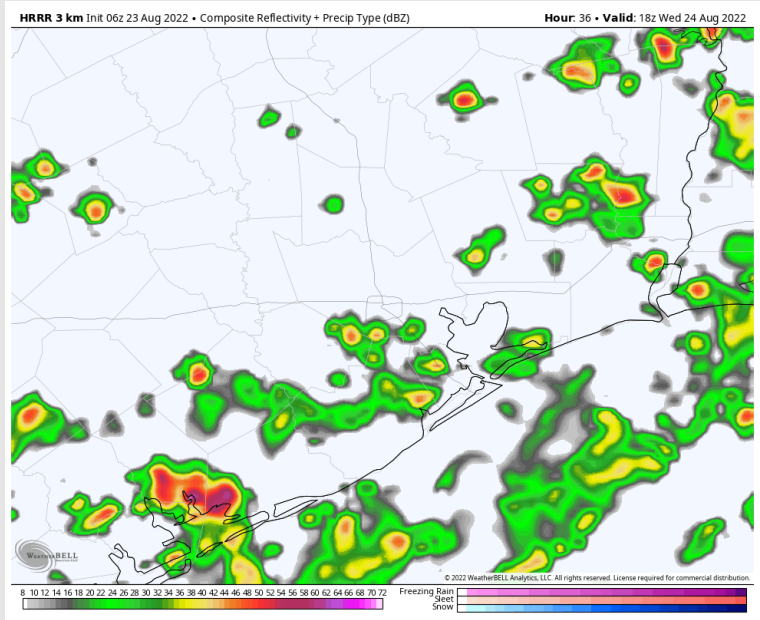
Precip: Scattered showers/storms continue throughout the day. Right now due to data differences, lower confidence on a multiple hour window where chances may be lower/ more dry time would be seen. Chances of seeing rain on the day 70%. Pockets of moderate to heavy rain will be possible with lightning.

Wind: Winds will generally be out of the SW at 8-13 MPH with gusts 13-18 MPH possible at the boarding station for much of the day. Pockets of precip may offer up slightly higher wind speeds, but as mentioned above lower confidence at the moment on when those would potentially arrive.

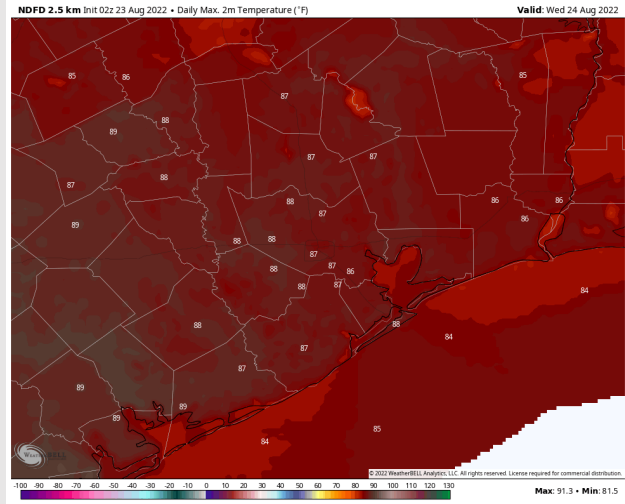
Temps: High temps Wednesday in the mid 80s F near the boarding station and in the upper 80s F / near 90 F at all other stations.

Visibility: Not anticipating fog concerns at this time.

Precip Forecast: 12 PM CT



Wind Speed
7 AM CT



High Temps
WED

Houston Pilots: Thurs. 8/25/2022



Forecast Discussion

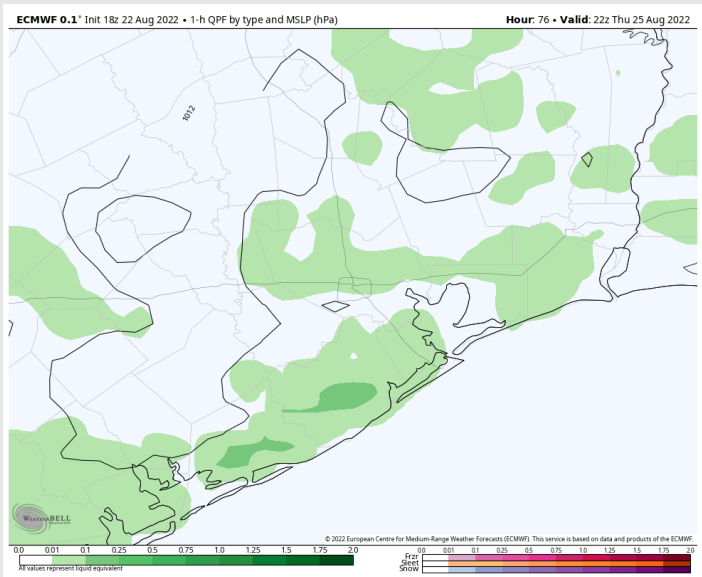
Precip: Scattered showers/storms continue throughout the day there is no particular timeframe that looks to hold drier hours vs. another.

Wind: Sustained winds in the AM out of the S/SW at 8-10 MPH. near the boarding point. Winds lighter north of the boarding point at 3-7 MPH. After 7AM, winds shift to out of the W at 5-7 MPH around the Houston Metro Area, with stronger winds near the boarding point at 9-14 MPH. After 12 PM, winds become more variable and decrease in speed to 3-7 MPH for all locations for the rest of the day.

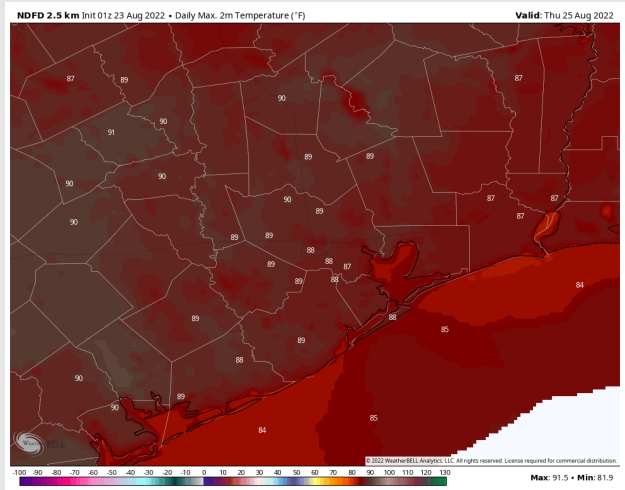
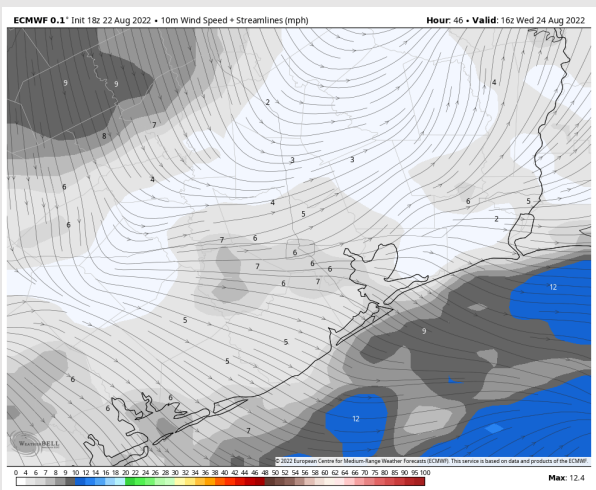
Temps: High temps Thursday in the mid 80s near the boarding point and upper 80s for all other stations.

Visibility: Not anticipating fog concerns at this time.

Precip Forecast: 5 PM CT

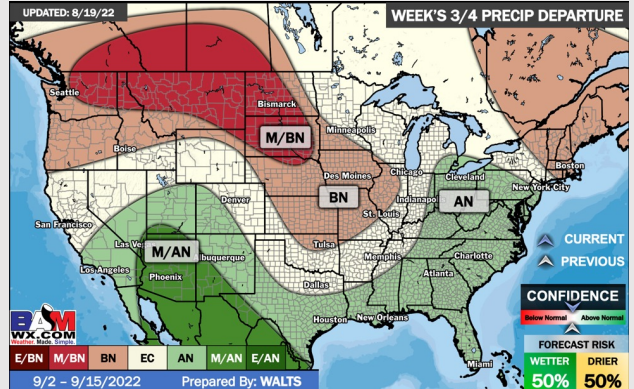
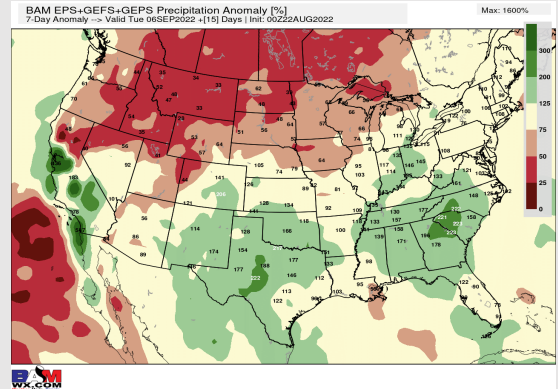
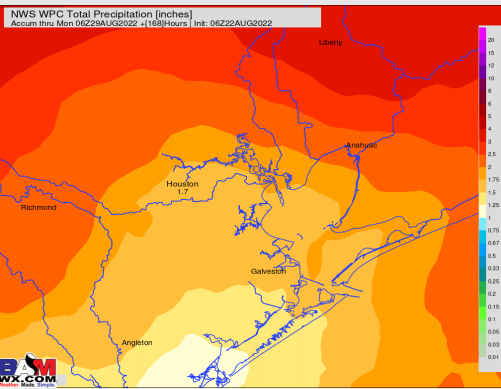
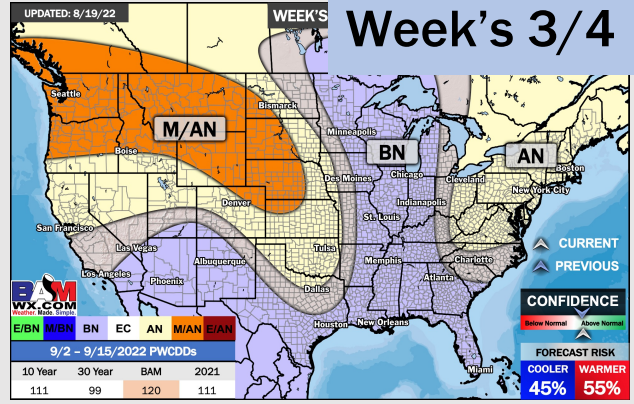
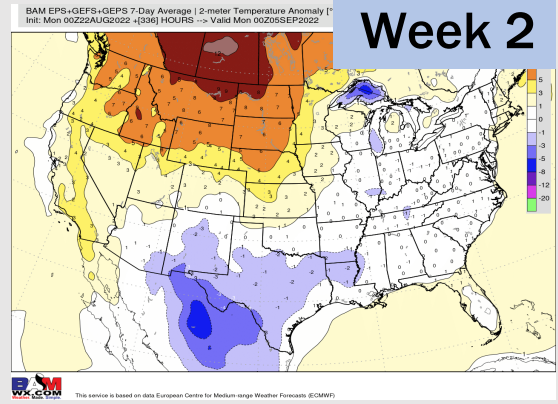
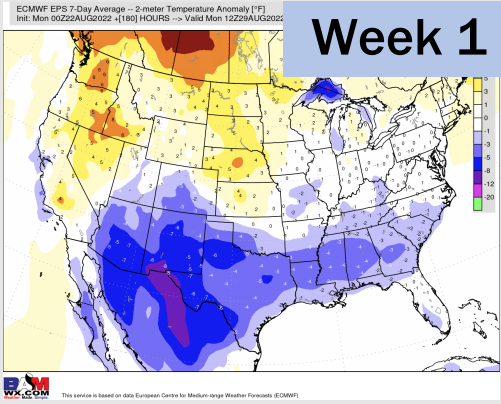


Wind Speed 11 AM CT



High Temps Thurs

Houston Pilots: 8/23/22



- Temperatures expected to be below normal this week. Increased rainfall chances as storms move through the area the next several days.
- Week 2 likely features near normal temperatures and near normal precipitation.
- The weeks ¾ timeframe into mid September looks to feature below normal temperatures and above normal risks for precip.