

Houston Pilots Forecast Package

Houston Pilots

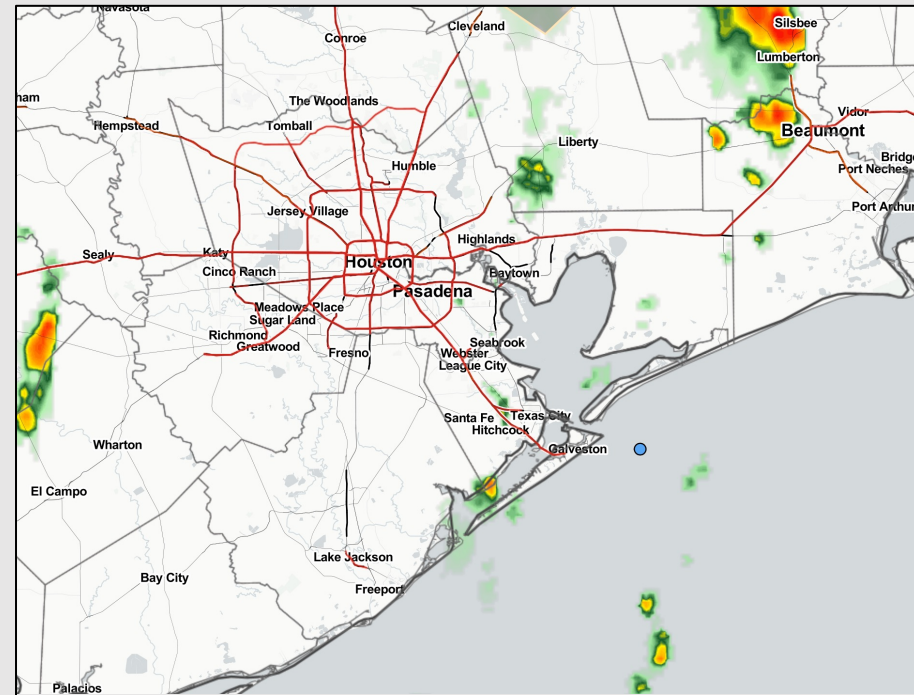
Updated: 4:30 AM CT

Monday, August 22, 2022

Forecaster: Vince Bryan

Weather Headlines

- Increasing hit or miss storm activity will continue the next few days. A stronger storm /wind gusts does remain possible as these develop.
- No tropical threat for Houston expected over the next 7-10 days.
- Biggest wind risks will be associated with storms moving through early this week.

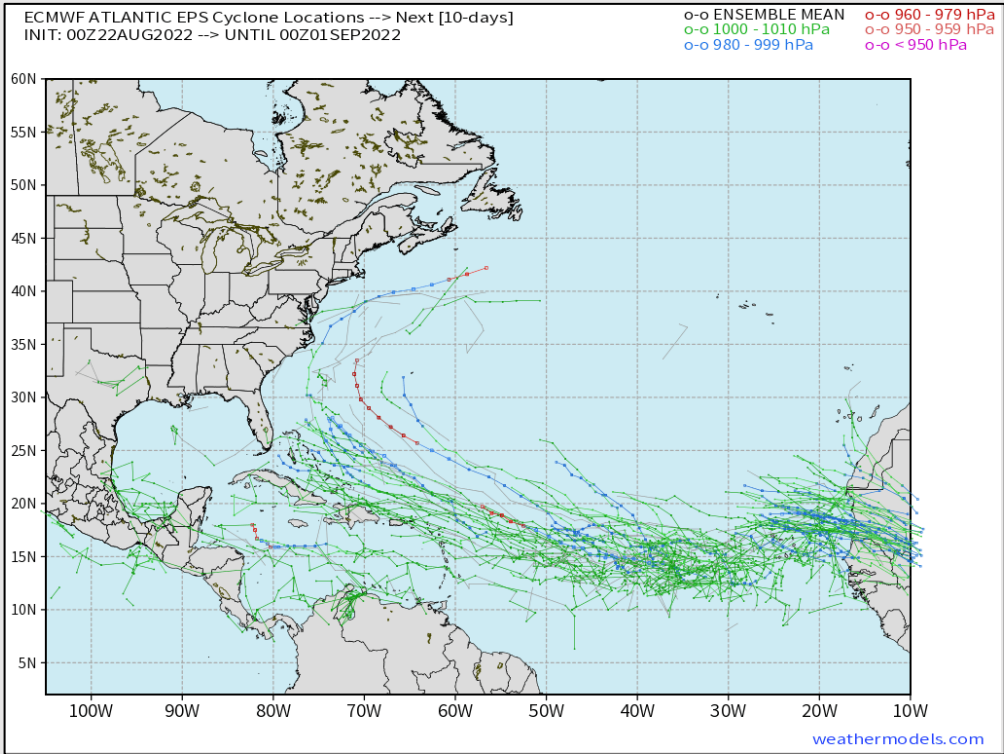


Radar/ NWS Alerts: 4:30 AM CT



As always, please do not hesitate to reach out to us with any forecast questions via the chat option on the Weather Porthole or our on-call number, **(317)-560-8122** press 1 for forecast questions.

Various model tracks next 10 days



No tropical threat for Houston expected over the next 7-10+ days, however there are some suggestions that the Atlantic may try and become a bit more active here over the next 1-2 weeks. Something we will be watching for any implications into early Sep.

Confidence

Above Normal Below Normal

Houston Pilots Wind Report



Confidence



Example

Sustained wind 13 MPH
Gusts 18 MPH
Wind from the N

WS: 13
G:18
N

Time	08-22-2022 Mon 3am	08-22-2022 Mon 4am	08-22-2022 Mon 5am	08-22-2022 Mon 6am	08-22-2022 Mon 7am	08-22-2022 Mon 8am	08-22-2022 Mon 9am	08-22-2022 Mon 10am	08-22-2022 Mon 11am	08-22-2022 Mon 12pm	08-22-2022 Mon 1pm	08-22-2022 Mon 2pm	08-22-2022 Mon 3pm	08-22-2022 Mon 4pm	08-22-2022 Mon 5pm	08-22-2022 Mon 6pm	08-22-2022 Mon 7pm	08-22-2022 Mon 8pm	08-22-2022 Mon 9pm	08-22-2022 Mon 10pm	08-22-2022 Mon 11pm	08-23-2022 Tue 12am	08-23-2022 Tue 1am	08-23-2022 Tue 2am	08-23-2022 Tue 3am	08-23-2022 Tue 4am	08-23-2022 Tue 5am	08-23-2022 Tue 6am	08-23-2022 Tue 7am	08-23-2022 Tue 8am	08-23-2022 Tue 9am	08-23-2022 Tue 10am	08-23-2022 Tue 11am	08-23-2022 Tue 12pm	08-23-2022 Tue 1pm	08-23-2022 Tue 2pm				
Houston Pilots N - 610 Bridge	WS: 4 G:13 SSE	WS: 4 G:12 S	WS: 3 G:11 S	WS: 4 G:12 S	WS: 5 G:13 S	WS: 6 G:18 S	WS: 9 G:17 S	WS: 10 G:16 SSW	WS: 9 G:14 SSW	WS: 9 G:13 SSW	WS: 11 G:15 SW	WS: 4 G:14 S	WS: 5 G:11 SSE	WS: 7 G:12 ESE	WS: 5 G:12 SSE	WS: 7 G:15 SSE	WS: 8 G:15 SSE	WS: 7 G:14 SSE	WS: 7 G:13 S	WS: 6 G:12 S	WS: 5 G:10 S	WS: 4 G:8 S	WS: 4 G:8 S	WS: 3 G:7 SSW	WS: 3 G:6 S	WS: 3 G:6 S	WS: 3 G:6 SSW	WS: 3 G:7 SSW	WS: 3 G:7 SSW	WS: 4 G:9 SSW	WS: 6 G:12 SW	WS: 6 G:12 SW	WS: 7 G:13 WSW	WS: 6 G:12 SW	WS: 7 G:13 WSW	WS: 6 G:13 WSW	WS: 5 G:13 WSW			
Houston Pilots M - Kinder 1	WS: 4 G:13 SSE	WS: 4 G:14 S	WS: 3 G:11 S	WS: 4 G:12 S	WS: 5 G:13 S	WS: 6 G:18 S	WS: 9 G:17 S	WS: 10 G:16 SSW	WS: 9 G:14 SSW	WS: 9 G:13 SSW	WS: 10 G:13 SW	WS: 4 G:13 SSE	WS: 5 G:10 SE	WS: 7 G:12 ESE	WS: 6 G:12 SSE	WS: 8 G:15 SSE	WS: 8 G:15 SSE	WS: 7 G:14 SSE	WS: 7 G:13 S	WS: 6 G:12 S	WS: 5 G:10 S	WS: 4 G:8 S	WS: 4 G:8 S	WS: 3 G:7 SSW	WS: 3 G:6 S	WS: 3 G:6 S	WS: 3 G:6 SSW	WS: 3 G:7 SSW	WS: 4 G:9 SSW	WS: 6 G:12 SW	WS: 6 G:12 SW	WS: 7 G:13 WSW	WS: 6 G:12 SW	WS: 7 G:13 WSW	WS: 6 G:13 WSW	WS: 5 G:13 WSW				
Houston Pilots L - Greens Bayou	WS: 5 G:14 SSE	WS: 4 G:15 S	WS: 3 G:11 S	WS: 4 G:12 S	WS: 5 G:13 S	WS: 6 G:18 SSW	WS: 9 G:17 S	WS: 10 G:16 SSW	WS: 9 G:14 SSW	WS: 9 G:13 SSW	WS: 8 G:11 SSW	WS: 5 G:13 SSE	WS: 6 G:11 SE	WS: 8 G:14 ESE	WS: 8 G:15 SSW	WS: 8 G:15 SSE	WS: 7 G:14 SSE	WS: 7 G:13 S	WS: 6 G:12 S	WS: 5 G:10 S	WS: 4 G:8 S	WS: 4 G:8 S	WS: 3 G:7 SSW	WS: 3 G:6 S	WS: 3 G:6 S	WS: 3 G:6 S	WS: 3 G:6 S	WS: 3 G:6 S	WS: 4 G:9 SSW	WS: 6 G:12 SW	WS: 6 G:12 SW	WS: 7 G:13 WSW	WS: 6 G:12 SW	WS: 7 G:13 WSW	WS: 6 G:13 WSW	WS: 5 G:13 WSW				
Houston Pilots K - Shell Crude	WS: 5 G:14 SSE	WS: 6 G:15 S	WS: 3 G:12 S	WS: 4 G:12 S	WS: 4 G:13 S	WS: 6 G:17 SSW	WS: 9 G:16 S	WS: 10 G:16 SSW	WS: 9 G:14 SSW	WS: 9 G:13 SSW	WS: 11 G:11 SSW	WS: 5 G:14 SSW	WS: 6 G:11 ESE	WS: 8 G:14 ESE	WS: 9 G:17 S	WS: 9 G:15 SSE	WS: 7 G:14 SSE	WS: 7 G:13 S	WS: 6 G:12 S	WS: 5 G:10 S	WS: 4 G:9 S	WS: 4 G:8 S	WS: 3 G:7 SSW	WS: 3 G:6 S	WS: 3 G:6 S	WS: 3 G:6 S	WS: 3 G:6 S	WS: 3 G:6 S	WS: 4 G:9 SSW	WS: 6 G:12 SW	WS: 6 G:12 SW	WS: 7 G:13 WSW	WS: 6 G:12 SW	WS: 7 G:13 WSW	WS: 6 G:13 WSW	WS: 5 G:13 WSW				
Houston Pilots J - Lynchburg Ferries	WS: 5 G:15 S	WS: 4 G:17 S	WS: 3 G:13 S	WS: 4 G:14 S	WS: 4 G:13 S	WS: 5 G:17 SSW	WS: 8 G:16 S	WS: 10 G:16 SSW	WS: 8 G:14 SSW	WS: 8 G:13 SSW	WS: 9 G:12 S	WS: 8 G:18 S	WS: 8 G:13 ESE	WS: 8 G:16 ESE	WS: 11 G:18 SSE	WS: 10 G:16 SSE	WS: 8 G:14 SSE	WS: 8 G:14 SSE	WS: 7 G:13 S	WS: 7 G:13 S	WS: 6 G:12 S	WS: 5 G:10 S	WS: 5 G:9 S	WS: 4 G:8 S	WS: 4 G:7 S	WS: 4 G:7 S	WS: 4 G:7 S	WS: 4 G:7 S	WS: 4 G:7 S	WS: 6 G:12 SW	WS: 6 G:12 SW	WS: 7 G:13 WSW	WS: 6 G:12 SW	WS: 7 G:13 WSW	WS: 6 G:13 WSW	WS: 5 G:13 WSW				
Houston Pilots I - Exxon 3	WS: 6 G:16 S	WS: 6 G:17 S	WS: 4 G:16 S	WS: 5 G:17 S	WS: 5 G:16 S	WS: 8 G:16 SSW	WS: 8 G:16 S	WS: 10 G:16 S	WS: 9 G:14 SSW	WS: 9 G:13 SSW	WS: 11 G:15 SSE	WS: 8 G:14 W	WS: 8 G:14 ESE	WS: 10 G:18 SSE	WS: 12 G:19 SSE	WS: 11 G:16 SSE	WS: 8 G:15 S	WS: 8 G:14 S	WS: 7 G:13 S	WS: 6 G:12 S	WS: 6 G:11 S	WS: 6 G:10 S	WS: 5 G:9 S	WS: 5 G:9 S	WS: 5 G:9 S	WS: 5 G:9 S	WS: 5 G:9 S	WS: 4 G:8 S	WS: 6 G:12 SW	WS: 6 G:12 SW	WS: 7 G:13 WSW	WS: 6 G:12 SW	WS: 7 G:13 WSW	WS: 6 G:13 WSW	WS: 5 G:13 WSW					
Houston Pilots H - Morgans Point	WS: 8 G:17 S	WS: 9 G:18 S	WS: 7 G:17 SSW	WS: 8 G:18 S	WS: 8 G:18 SSW	WS: 8 G:18 SSW	WS: 10 G:16 S	WS: 10 G:16 S	WS: 11 G:15 S	WS: 11 G:14 SSE	WS: 12 G:18 SSW	WS: 12 G:18 S	WS: 11 G:16 SE	WS: 14 G:20 SSE	WS: 14 G:20 SSE	WS: 12 G:17 S	WS: 11 G:17 SSE	WS: 10 G:16 S	WS: 9 G:15 S	WS: 9 G:14 S	WS: 8 G:13 S	WS: 7 G:12 S	WS: 7 G:12 S	WS: 6 G:11 S	WS: 6 G:11 S	WS: 6 G:11 S	WS: 6 G:11 S	WS: 5 G:11 S	WS: 5 G:11 S	WS: 6 G:12 SW	WS: 6 G:12 SW	WS: 7 G:13 WSW	WS: 6 G:12 SW	WS: 7 G:13 WSW	WS: 6 G:13 WSW	WS: 5 G:13 WSW				
Houston Pilots G - 75/76	WS: 11 G:17 S	WS: 12 G:19 S	WS: 11 G:18 SSW	WS: 12 G:19 S	WS: 12 G:19 SSW	WS: 10 G:18 SSW	WS: 11 G:16 S	WS: 11 G:16 S	WS: 11 G:15 S	WS: 12 G:15 SSE	WS: 15 G:19 SSE	WS: 17 G:21 SSE	WS: 15 G:19 SSE	WS: 17 G:20 SSE	WS: 17 G:21 SSE	WS: 13 G:17 S	WS: 13 G:17 S	WS: 11 G:17 S	WS: 11 G:16 S	WS: 10 G:16 S	WS: 10 G:16 S	WS: 9 G:15 S	WS: 9 G:14 S	WS: 8 G:14 S	WS: 8 G:13 S	WS: 8 G:13 S	WS: 8 G:13 S	WS: 7 G:12 S	WS: 8 G:13 SW	WS: 8 G:13 SW	WS: 9 G:14 SW	WS: 8 G:13 SW	WS: 9 G:14 SW	WS: 8 G:13 SW	WS: 9 G:14 SW	WS: 7 G:12 SW	WS: 8 G:13 SW			
Houston Pilots F - 63/64	WS: 11 G:17 S	WS: 13 G:19 S	WS: 12 G:18 S	WS: 12 G:18 SSW	WS: 13 G:19 SSW	WS: 10 G:16 SSW	WS: 12 G:17 S	WS: 12 G:16 S	WS: 11 G:16 S	WS: 11 G:15 SSE	WS: 15 G:19 SSE	WS: 17 G:20 SSE	WS: 15 G:19 SSE	WS: 17 G:20 SSE	WS: 18 G:22 SSE	WS: 13 G:17 S	WS: 12 G:18 S	WS: 12 G:17 S	WS: 12 G:17 S	WS: 12 G:17 S	WS: 12 G:17 S	WS: 11 G:16 S	WS: 11 G:16 S	WS: 10 G:15 S	WS: 10 G:15 S	WS: 10 G:15 S	WS: 9 G:14 S	WS: 9 G:14 S	WS: 8 G:13 S	WS: 8 G:13 S	WS: 8 G:13 S	WS: 8 G:13 S	WS: 8 G:12 SW	WS: 8 G:12 SW	WS: 9 G:13 SW	WS: 8 G:12 SW	WS: 9 G:13 SW	WS: 7 G:12 SW	WS: 8 G:13 SW	
Houston Pilots E - 51/52	WS: 10 G:17 S	WS: 13 G:19 S	WS: 12 G:18 S	WS: 12 G:18 SSW	WS: 13 G:19 SSW	WS: 10 G:16 SSW	WS: 13 G:17 S	WS: 12 G:16 S	WS: 12 G:16 S	WS: 13 G:16 S	WS: 15 G:18 S	WS: 16 G:19 S	WS: 16 G:19 S	WS: 16 G:19 S	WS: 16 G:19 S	WS: 18 G:21 S	WS: 14 G:17 S	WS: 13 G:17 S	WS: 13 G:17 S	WS: 12 G:17 S	WS: 12 G:17 S	WS: 12 G:17 S	WS: 12 G:17 S	WS: 12 G:17 S	WS: 12 G:17 S	WS: 11 G:16 S	WS: 11 G:16 S	WS: 10 G:15 S	WS: 10 G:15 S	WS: 9 G:14 S	WS: 9 G:14 S	WS: 8 G:13 S	WS: 8 G:13 S	WS: 8 G:13 S	WS: 8 G:13 S	WS: 8 G:12 SW	WS: 8 G:12 SW	WS: 9 G:13 SW	WS: 8 G:12 SW	WS: 9 G:13 SW
Houston Pilots D - 37/38	WS: 10 G:17 S	WS: 12 G:19 S	WS: 12 G:18 S	WS: 12 G:17 S	WS: 12 G:18 S	WS: 11 G:16 S	WS: 13 G:17 S	WS: 12 G:16 S	WS: 12 G:16 S	WS: 13 G:16 S	WS: 15 G:17 S	WS: 16 G:17 S	WS: 16 G:17 S	WS: 15 G:16 S	WS: 17 G:20 S	WS: 14 G:17 S	WS: 13 G:17 S	WS: 13 G:17 S	WS: 12 G:17 S	WS: 12 G:17 S	WS: 12 G:17 S	WS: 12 G:17 S	WS: 12 G:17 S	WS: 12 G:17 S	WS: 12 G:17 S	WS: 12 G:17 S	WS: 12 G:17 S	WS: 12 G:17 S	WS: 11 G:16 S	WS: 11 G:16 S	WS: 10 G:15 S	WS: 10 G:15 S	WS: 10 G:14 S	WS: 10 G:14 S	WS: 9 G:13 S	WS: 9 G:13 S	WS: 8 G:12 SW	WS: 9 G:13 SW	WS: 8 G:12 SW	WS: 9 G:13 SW
Houston Pilots C - 25/26	WS: 9 G:17 S	WS: 11 G:18 S	WS: 11 G:17 S	WS: 10 G:17 S	WS: 12 G:18 S	WS: 10 G:16 S	WS: 11 G:16 S	WS: 11 G:16 S	WS: 12 G:17 S	WS: 12 G:15 S	WS: 14 G:17 S	WS: 15 G:19 S	WS: 14 G:17 S	WS: 14 G:16 S	WS: 15 G:19 S	WS: 13 G:17 S	WS: 12 G:16 S	WS: 12 G:16 S	WS: 12 G:16 S	WS: 12 G:16 S	WS: 12 G:16 S	WS: 12 G:16 S	WS: 12 G:16 S	WS: 12 G:16 S	WS: 12 G:16 S	WS: 12 G:16 S	WS: 12 G:16 S	WS: 11 G:15 S	WS: 11 G:15 S	WS: 10 G:14 S	WS: 10 G:14 S	WS: 10 G:14 S	WS: 10 G:14 S	WS: 9 G:13 S	WS: 9 G:13 S	WS: 8 G:12 SW	WS: 9 G:13 SW	WS: 8 G:12 SW	WS: 9 G:13 SW	
Houston Pilots B - 11/12	WS: 9 G:16 S	WS: 13 G:19 S	WS: 12 G:17 S	WS: 11 G:17 S	WS: 13 G:19 S	WS: 11 G:16 S	WS: 12 G:16 S	WS: 11 G:16 S	WS: 11 G:16 S	WS: 11 G:15 S	WS: 14 G:17 S	WS: 14 G:18 S	WS: 13 G:17 S	WS: 13 G:16 S	WS: 15 G:18 S	WS: 13 G:16 S	WS: 12 G:16 S	WS: 12 G:16 S	WS: 12 G:16 S	WS: 12 G:16 S	WS: 13 G:16 S	WS: 13 G:16 S	WS: 13 G:16 S	WS: 13 G:16 S	WS: 13 G:16 S	WS: 13 G:16 S	WS: 13 G:16 S	WS: 12 G:15 S	WS: 12 G:15 S	WS: 11 G:14 S	WS: 11 G:14 S	WS: 11 G:14 S	WS: 11 G:14 S	WS: 10 G:13 S	WS: 10 G:13 S	WS: 9 G:12 SW	WS: 10 G:13 SW	WS: 9 G:12 SW	WS: 10 G:13 SW	
Houston Pilots A - 1 & 2 Bravo	WS: 13 G:18 S	WS: 16 G:19 S	WS: 14 G:17 S	WS: 14 G:17 S	WS: 15 G:19 S	WS: 13 G:16 S	WS: 16 G:18 S	WS: 12 G:16 S	WS: 12 G:16 S	WS: 10 G:14 S	WS: 13 G:16 S	WS: 14 G:17 S	WS: 14 G:17 S	WS: 13 G:16 S	WS: 15 G:18 S	WS: 13 G:16 S	WS: 13 G:16 S	WS: 13 G:16 S	WS: 13 G:16 S	WS: 13 G:16 S	WS: 14 G:17 S	WS: 14 G:17 S	WS: 14 G:18 S	WS: 14 G:18 S	WS: 14 G:18 S	WS: 14 G:18 S	WS: 14 G:18 S	WS: 14 G:18 S	WS: 13 G:17 S	WS: 13 G:17 S	WS: 12 G:16 S	WS: 12 G:16 S	WS: 12 G:16 S	WS: 12 G:16 S	WS: 12 G:16 S	WS: 12 G:16 S	WS: 11 G:15 S	WS: 12 G:16 S	WS: 11 G:15 S	WS: 12 G:16 S

See slides below for official thoughts on winds.

Houston Pilots: Mon. 8/22/2022



Forecast Discussion

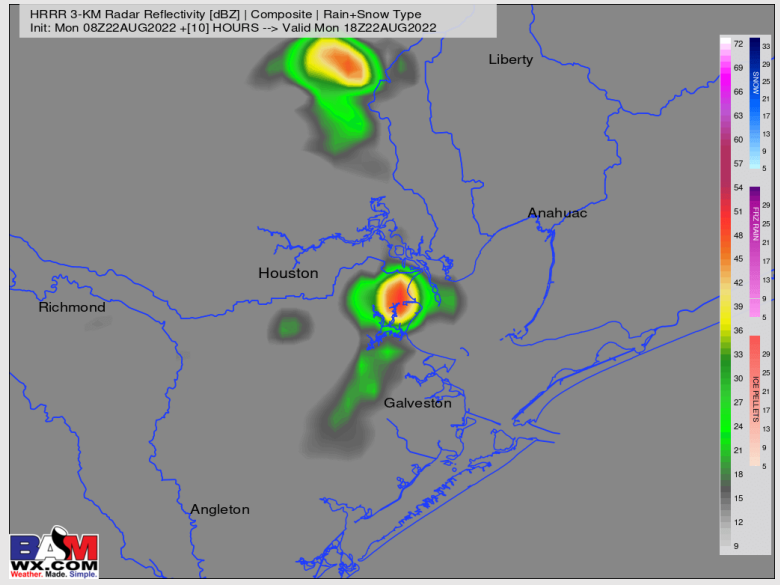
Precip: Scattered, hit and miss 30% chances will be around for much of the morning and afternoon hours. As common with hit and miss pop ups, briefly locally heavy downpours and lightning will be possible with any cells. Coverage looks to fade by ~6-7 PM.

Wind: Sustained winds this morning out of the S 10-15 MPH. Winds north of Morgan's Point 3-8 MPH. All winds 10-15 MPH out of the SSW after 11AM and through rest of the day. Gusts of 15-20 MPH possible for all stations by ~mid-afternoon.

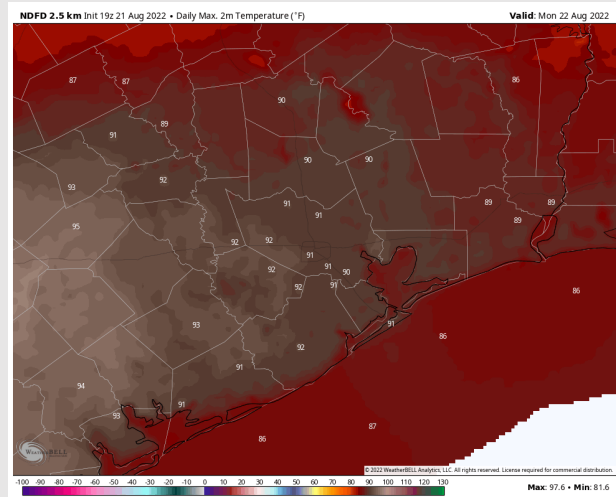
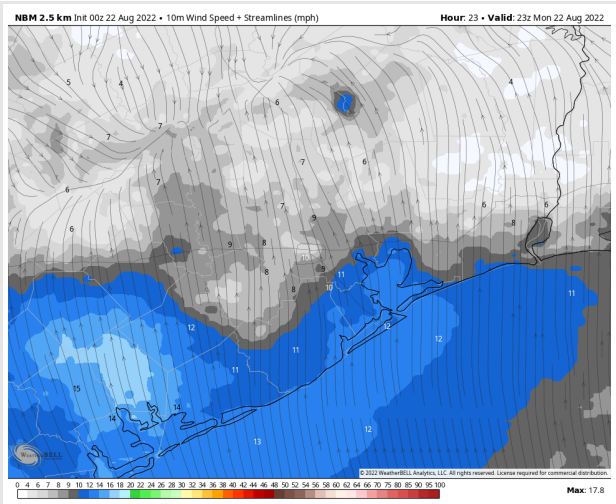
Temps: High temps in the mid 80s F near the boarding station and near 90 F at all other stations.

Visibility: Not anticipating fog concerns at this time.

Precip Forecast: 1 PM CT



Wind Speed
6 PM CT



High Temps

Houston Pilots: Tue. 8/23/2022

Forecast Discussion

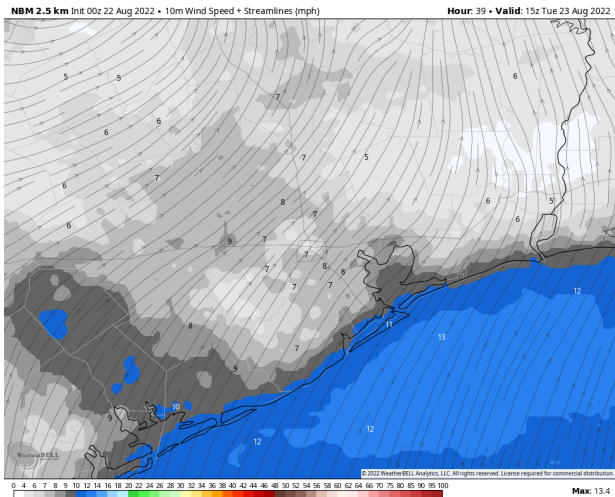
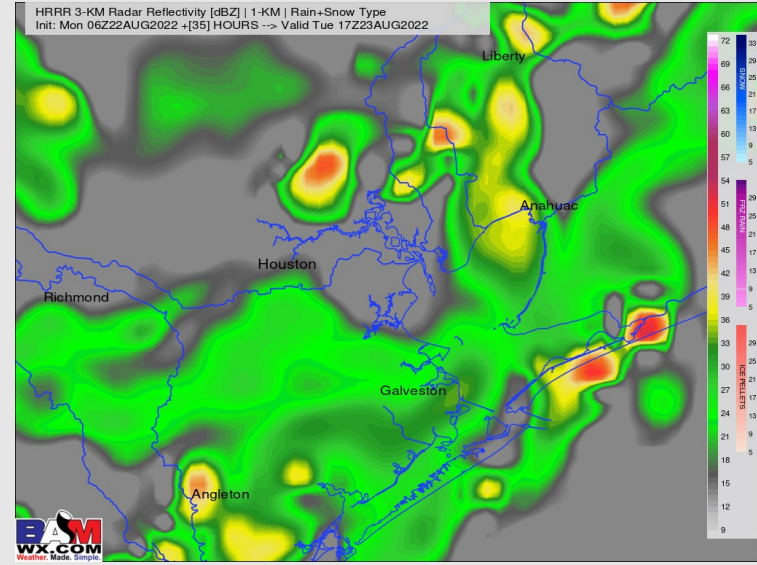
Precip: Expecting a line of broken showers/thunderstorms to move in around 1-3 AM at 40-50% coverage and linger in the area into the mid morning. Around 10-11 AM, more widespread coverage (70-80% chances) moves in from the NW and continues through the afternoon with coverage decreasing by ~5-6 PM. Biggest risks will be locally heavy rainfall and lightning.

Wind: Sustained winds at the boarding station are 13-18 MPH out of the S Tuesday AM, until 6AM when winds begin to veer out of the SW. Winds north of Morgan's Point 5-10 MPH before increasing into the afternoon hours with precip. A few gusts of 20-25+ MPH will be possible under heavier cells, but widespread wind gusts are not favored at this time.

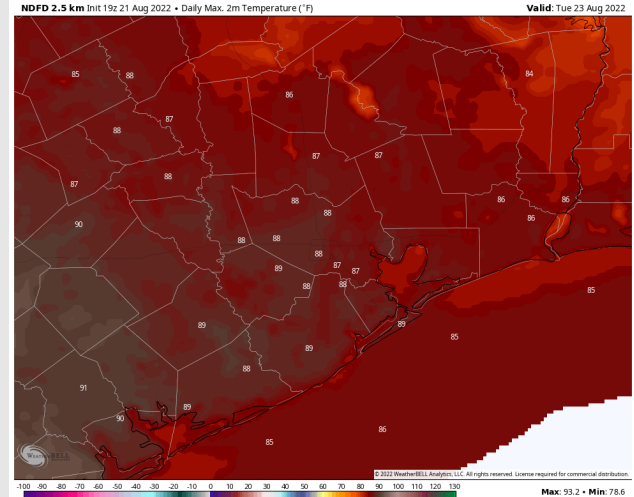
Temps: High temps in the mid to upper 80s F for all stations.

Visibility: Not anticipating fog concerns at this time, however anticipating reduced visibility in the PM as stronger storms move through.

Precip Forecast: 1 PM CT



Wind Speed
10 AM CT



High Temps
TUE

Forecast Discussion

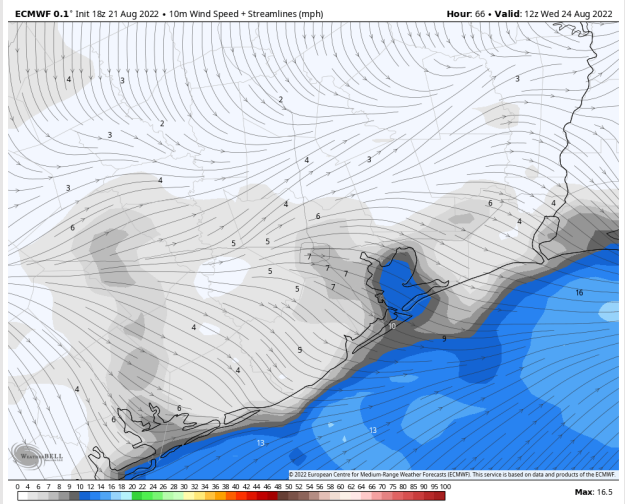
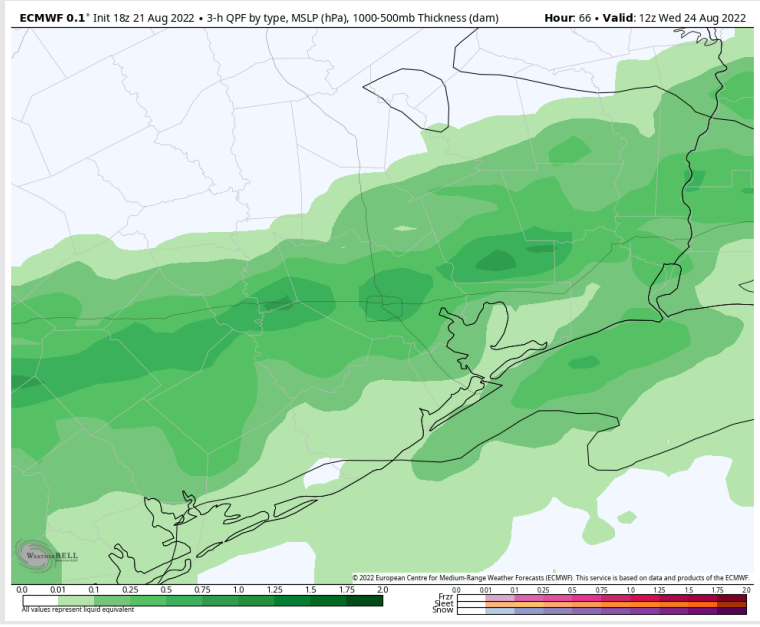
Precip: Scattered showers/storms continue throughout the day Wednesday with better coverage inland near HOU Metro.

Wind: Sustained winds out of the WSW in the AM 8-13 MPH in the early AM. After 8AM, winds will veer from the NW still at 8-13 MPH. Around 11 AM winds calm 3-8 MPH still out of the NW. At ~3PM, winds begin to veer from the SW. Wind gusts up to 25 MPH under stronger storms.

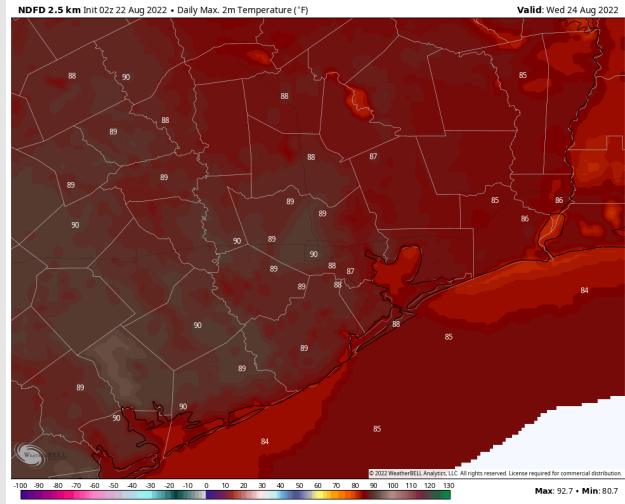
Temps: High temps Wednesday in the mid 80s F near the boarding station and in the upper 80s F / near 90 F at all other stations.

Visibility: Not anticipating fog concerns at this time.

Precip Forecast: 7 AM CT

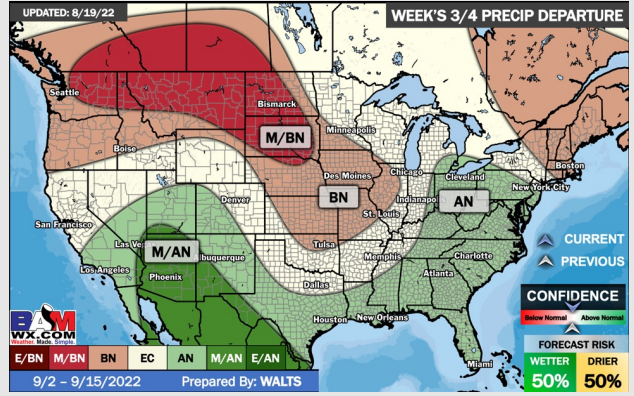
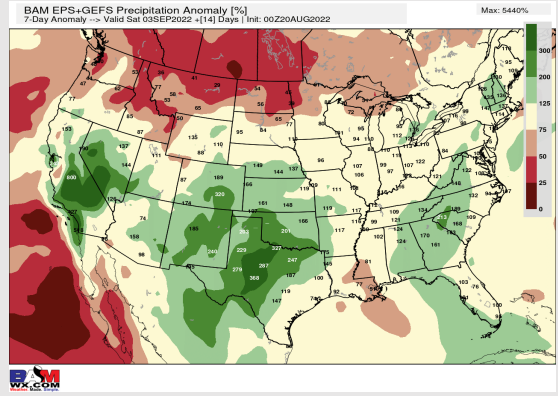
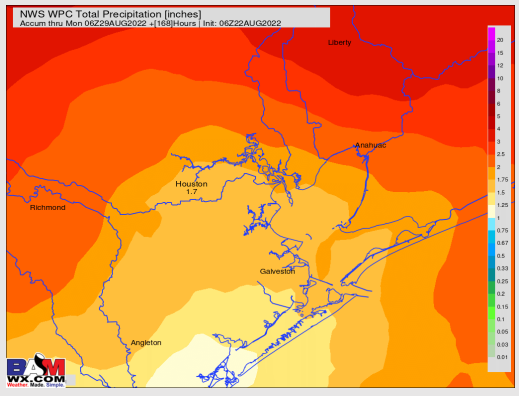
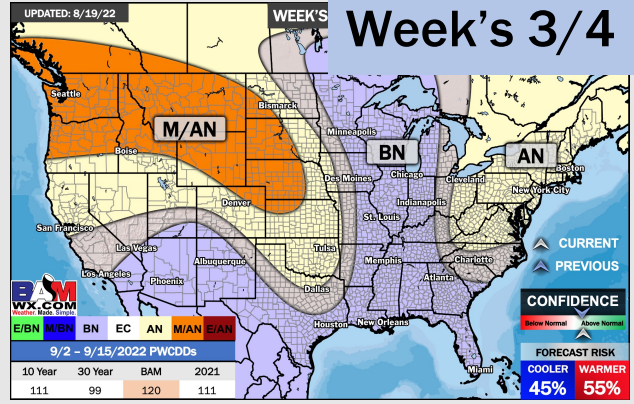
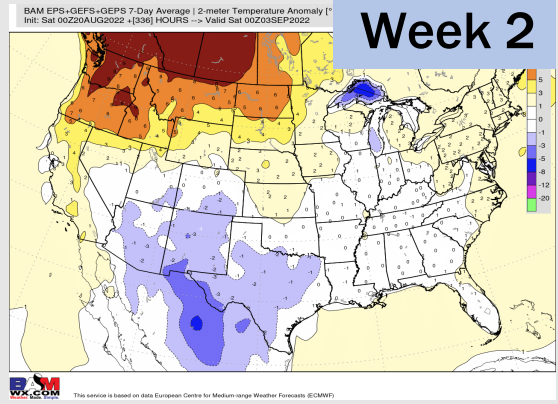
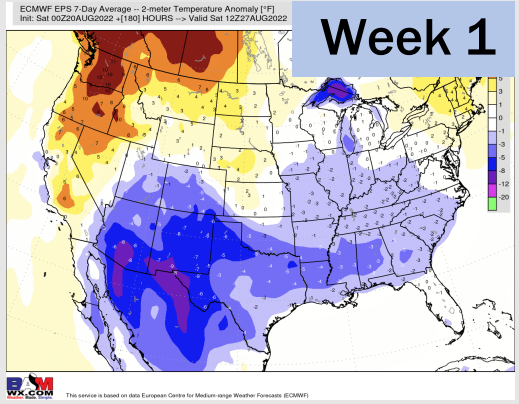


Wind Speed
7 AM CT



High Temps
WED

Houston Pilots: 8/22/22



- Temperatures expected to be below normal this week. Increased rainfall chances as storms move through mid to late next week.
- Week 2 likely features near normal temperatures and near normal precipitation.
- The weeks ¾ timeframe into mid September looks to feature below normal temperatures and above normal risks for precip.