

Houston Pilots Forecast Package

Houston Pilots

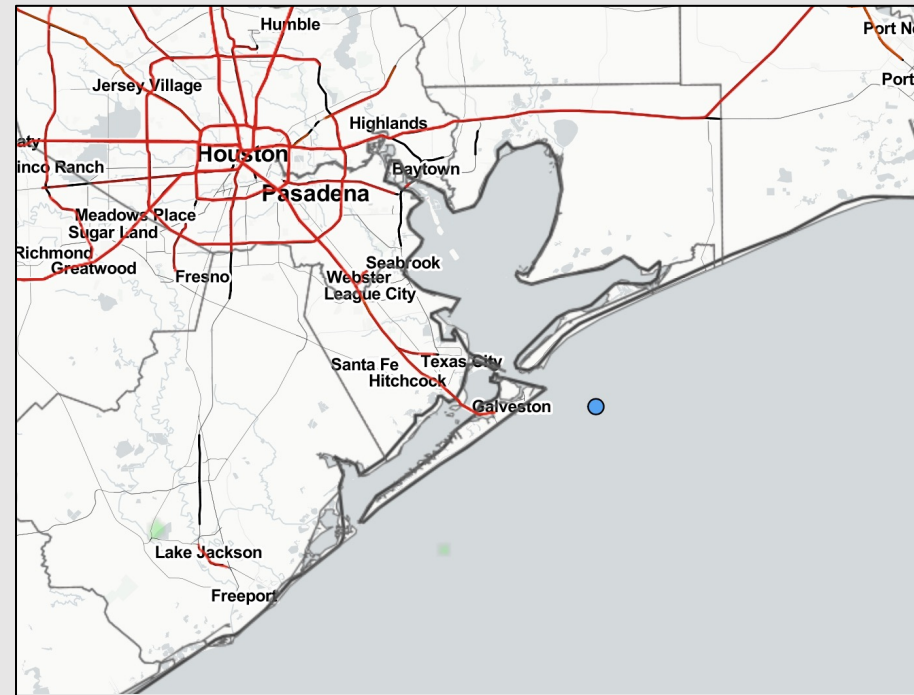
Updated: 5:30 AM CT

Sunday, August 21, 2022

Forecaster: Alyssa McClung

Weather Headlines

- Increasing hit or miss storm activity develops later this morning and into the afternoon hours. A stronger storm/wind gusts does remain possible as these develop.
- Tropical threats will continue to remain low ahead. There is a weak disturbance in the SW Caribbean that will be monitoring for, but as of now this is not a concern.
- Biggest wind risks will be associated with storms moving through today.



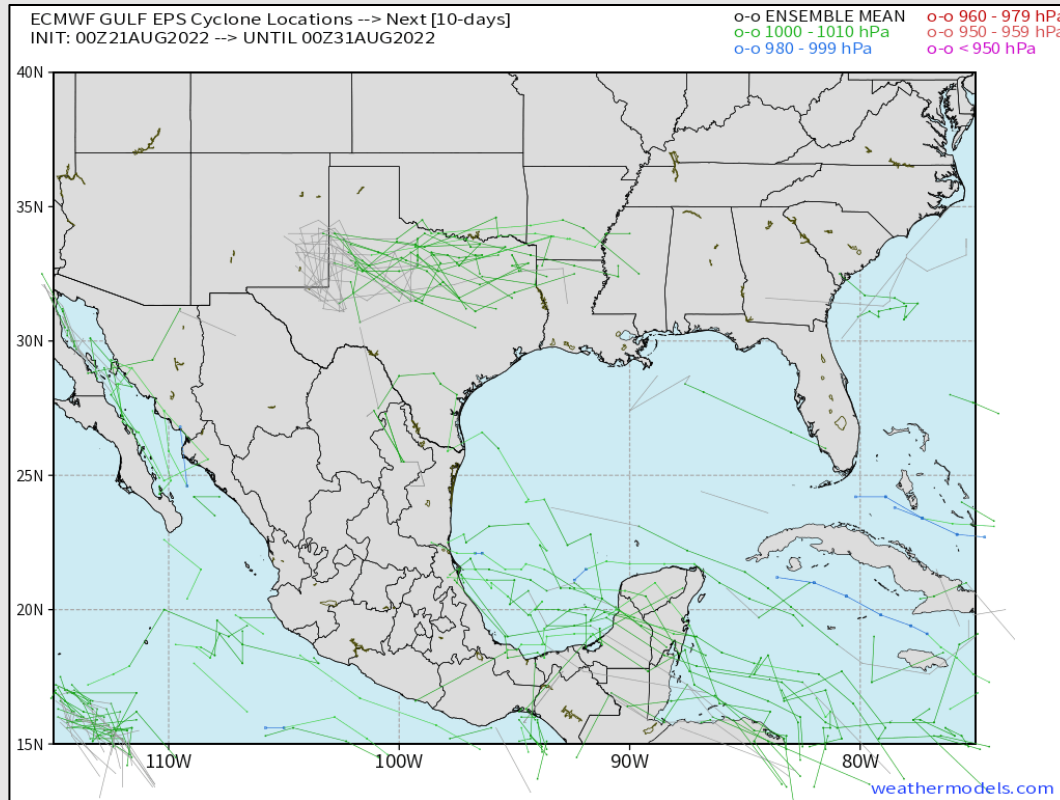
Radar/ NWS Alerts: 5:15 AM CT



As always, please do not hesitate to reach out to us with any forecast questions via the chat option on the Weather Porthole or our on-call number, **(317)-560-8122** press 1 for forecast questions.

Houston Pilots Extended Range Tropical Report

Various model tracks next 10 days



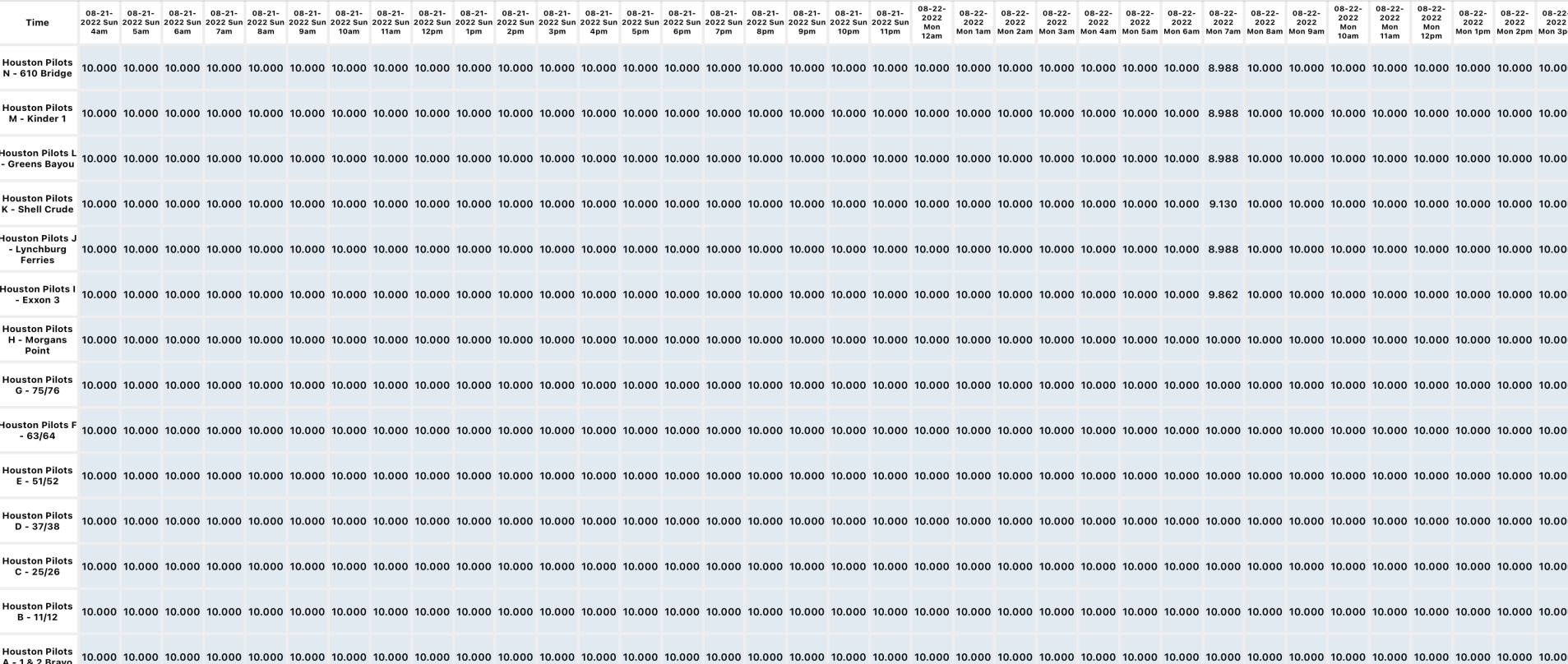
No tropical threat for Houston expected over the next 7-10 days. A tropical wave in the southwestern Caribbean could slowly become more organized over the next week. Will continue to monitor, but not overly concerned with future impacts at this time.

Confidence

Above
Normal

Below
Normal

The image contains two logos. On the left is the logo for BAM WX.COM, featuring the letters 'BAM' in a stylized font with a white 'A' and a black shadow, followed by 'WX.COM' in black and 'Weather. Made. Simple.' in blue and red below it. On the right is the logo for Houston Pilots, featuring a large red 'H' with a black outline and the text 'Houston Pilots' in white to its left.



Houston Pilots Wind Report



Confidence

Above Normal

Below Normal

Example

Sustained wind 13 MPH

Gusts 18 MPH

Wind from the N

WS: 13
G:18
N

Time	08-21-2022 Sun 4am	08-21-2022 Sun 5am	08-21-2022 Sun 6am	08-21-2022 Sun 7am	08-21-2022 Sun 8am	08-21-2022 Sun 9am	08-21-2022 Sun 10am	08-21-2022 Sun 11am	08-21-2022 Sun 12pm	08-21-2022 Sun 1pm	08-21-2022 Sun 2pm	08-21-2022 Sun 3pm	08-21-2022 Sun 4pm	08-21-2022 Sun 5pm	08-21-2022 Sun 6pm	08-21-2022 Sun 7pm	08-21-2022 Sun 8pm	08-21-2022 Sun 9pm	08-21-2022 Sun 10pm	08-21-2022 Sun 11pm	08-22-2022 Mon 12am	08-22-2022 Mon 1am	08-22-2022 Mon 2am	08-22-2022 Mon 3am	08-22-2022 Mon 4am	08-22-2022 Mon 5am	08-22-2022 Mon 6am	08-22-2022 Mon 7am	08-22-2022 Mon 8am	08-22-2022 Mon 9am	08-22-2022 Mon 10am	08-22-2022 Mon 11am	08-22-2022 Mon 12pm	08-22-2022 Mon 1pm	08-22-2022 Mon 2pm	08-22-2022 Mon 3pm	
Houston Pilots N - 610 Bridge	WS: 2 G:5 NE	WS: 4 G:8 E	WS: 2 G:3 SW	WS: 2 G:3 E	WS: 1 G:2 NE	WS: 6 G:14 SSE	WS: 8 G:18 S	WS: 2 G:13 S	WS: 5 G:13 S	WS: 4 G:10 SSE	WS: 2 G:10 ESE	WS: 13 G:27 SE	WS: 8 G:13 ENE	WS: 2 G:10 E	WS: 5 G:11 E	WS: 9 G:16 SSE	WS: 7 G:13 SSE	WS: 6 G:11 SSE	WS: 5 G:9 SSE	WS: 5 G:8 SSE	WS: 4 G:7 SSE	WS: 4 G:7 SSE	WS: 4 G:7 SSE	WS: 3 G:7 SSE	WS: 4 G:7 SSE	WS: 3 G:7 SSE	WS: 3 G:7 SSE	WS: 3 G:7 S	WS: 4 G:10 S	WS: 8 G:14 SSW	WS: 8 G:16 SSW	WS: 8 G:16 SSW	WS: 8 G:16 SSW	WS: 9 G:17 SSW	WS: 8 G:16 SSW	WS: 7 G:16 SSW	
Houston Pilots M - Kinder 1	WS: 2 G:5 ENE	WS: 5 G:11 E	WS: 2 G:3 WSW	WS: 2 G:3 E	WS: 1 G:3 ENE	WS: 6 G:15 SSE	WS: 8 G:18 S	WS: 2 G:13 S	WS: 5 G:13 S	WS: 4 G:11 S	WS: 3 G:10 ESE	WS: 12 G:26 SSE	WS: 7 G:11 NE	WS: 3 G:11 E	WS: 5 G:11 ESE	WS: 9 G:16 SSE	WS: 7 G:13 SSE	WS: 6 G:11 SSE	WS: 5 G:9 SSE	WS: 5 G:8 SSE	WS: 4 G:7 SSE	WS: 4 G:7 SSE	WS: 4 G:7 SSE	WS: 3 G:6 SSE	WS: 3 G:7 SSE	WS: 3 G:7 SSE	WS: 3 G:7 S	WS: 4 G:10 S	WS: 7 G:14 SSW	WS: 8 G:16 SSW	WS: 9 G:16 SSW	WS: 8 G:16 SSW	WS: 9 G:17 SSW	WS: 8 G:16 SSW	WS: 7 G:15 SSW		
Houston Pilots L - Greens Bayou	WS: 1 G:6 S	WS: 7 G:16 SE	WS: 2 G:5 WSW	WS: 2 G:4 ESE	WS: 1 G:5 ENE	WS: 7 G:15 S	WS: 11 G:21 S	WS: 3 G:11 SW	WS: 3 G:13 S	WS: 4 G:12 S	WS: 4 G:9 ESE	WS: 10 G:21 SE	WS: 6 G:12 ENE	WS: 5 G:12 ESE	WS: 5 G:11 ESE	WS: 10 G:16 SSE	WS: 7 G:13 SSE	WS: 7 G:11 SSE	WS: 5 G:9 SSE	WS: 5 G:8 SSE	WS: 4 G:7 SSE	WS: 4 G:7 SSE	WS: 4 G:7 SSE	WS: 3 G:6 SSE	WS: 3 G:6 SSE	WS: 3 G:6 S	WS: 3 G:6 S	WS: 4 G:10 S	WS: 7 G:13 SSW	WS: 9 G:15 SSW	WS: 9 G:15 SSW	WS: 9 G:15 SSW	WS: 9 G:16 SSW	WS: 8 G:16 SSW	WS: 7 G:14 S		
Houston Pilots K - Shell Crude	WS: 2 G:9 SW	WS: 7 G:17 SW	WS: 2 G:7 SW	WS: 2 G:6 E	WS: 1 G:7 E	WS: 7 G:16 SSW	WS: 10 G:19 SSW	WS: 3 G:11 SW	WS: 3 G:12 S	WS: 3 G:11 S	WS: 6 G:9 ESE	WS: 9 G:19 SE	WS: 6 G:8 ENE	WS: 5 G:8 ENE	WS: 5 G:11 ESE	WS: 10 G:16 SSE	WS: 8 G:13 SSE	WS: 7 G:11 SSE	WS: 5 G:10 SSE	WS: 5 G:9 SSE	WS: 5 G:8 SSE	WS: 4 G:7 SSE	WS: 4 G:7 SSE	WS: 4 G:7 SSE	WS: 4 G:7 SSE	WS: 3 G:7 S	WS: 3 G:7 S	WS: 4 G:10 S	WS: 7 G:13 SSW	WS: 8 G:15 SSW	WS: 9 G:15 SSW	WS: 9 G:15 SSW	WS: 9 G:16 S	WS: 8 G:15 S	WS: 7 G:14 S		
Houston Pilots J - Lynchburg Ferries	WS: 1 G:9 WNW	WS: 8 G:20 S	WS: 2 G:10 SSW	WS: 2 G:8 ESE	WS: 1 G:8 ESE	WS: 7 G:14 SSW	WS: 14 G:23 S	WS: 4 G:10 SW	WS: 2 G:12 S	WS: 3 G:9 S	WS: 7 G:9 ESE	WS: 12 G:18 SE	WS: 5 G:6 SE	WS: 5 G:9 ENE	WS: 6 G:14 ESE	WS: 11 G:16 SSE	WS: 8 G:13 SSE	WS: 7 G:11 SSE	WS: 6 G:10 SSE	WS: 6 G:9 SSE	WS: 5 G:8 SSE	WS: 5 G:8 SSE	WS: 5 G:8 SSE	WS: 5 G:8 SSE	WS: 4 G:7 S	WS: 4 G:7 S	WS: 4 G:7 S	WS: 4 G:8 S	WS: 5 G:10 S	WS: 7 G:13 SSW	WS: 8 G:15 SSW	WS: 9 G:15 SSW	WS: 9 G:15 SSW	WS: 9 G:16 S	WS: 8 G:15 S	WS: 7 G:14 SSE	
Houston Pilots I - Exxon 3	WS: 2 G:12 SW	WS: 6 G:18 SW	WS: 3 G:14 S	WS: 2 G:12 ESE	WS: 2 G:11 SE	WS: 6 G:11 SSW	WS: 13 G:23 SW	WS: 4 G:10 SW	WS: 2 G:12 SSW	WS: 3 G:9 S	WS: 7 G:9 ESE	WS: 9 G:14 SE	WS: 6 G:8 ESE	WS: 5 G:9 ENE	WS: 7 G:16 ESE	WS: 11 G:16 SSE	WS: 9 G:13 SSE	WS: 7 G:12 SSE	WS: 6 G:10 S	WS: 6 G:10 S	WS: 6 G:10 S	WS: 6 G:10 S	WS: 5 G:10 S	WS: 5 G:10 S	WS: 5 G:10 S	WS: 5 G:10 S	WS: 5 G:10 S	WS: 5 G:12 S	WS: 8 G:14 SSW	WS: 9 G:15 SSW	WS: 9 G:15 SSW	WS: 9 G:15 SSW	WS: 9 G:16 S	WS: 9 G:16 S	WS: 9 G:14 SSE		
Houston Pilots H - Morgans Point	WS: 5 G:15 SSW	WS: 8 G:18 SW	WS: 7 G:17 S	WS: 6 G:14 SSE	WS: 6 G:12 SSE	WS: 6 G:12 S	WS: 14 G:22 WSW	WS: 5 G:10 WSW	WS: 4 G:12 SSW	WS: 4 G:9 SSW	WS: 8 G:10 E	WS: 6 G:10 SSE	WS: 7 G:11 ENE	WS: 6 G:10 E	WS: 6 G:16 ESE	WS: 11 G:16 SSE	WS: 10 G:14 SSE	WS: 9 G:13 S	WS: 8 G:12 S	WS: 8 G:12 S	WS: 8 G:12 S	WS: 8 G:12 S	WS: 7 G:13 S	WS: 7 G:12 S	WS: 7 G:12 S	WS: 7 G:12 S	WS: 7 G:12 S	WS: 7 G:12 S	WS: 9 G:14 SSW	WS: 9 G:15 SSW	WS: 9 G:15 SSW	WS: 9 G:15 SSW	WS: 9 G:16 S	WS: 10 G:16 S	WS: 9 G:15 SSE		
Houston Pilots G - 75/76	WS: 12 G:18 S	WS: 13 G:20 S	WS: 13 G:19 S	WS: 16 G:11 S	WS: 10 G:14 SSE	WS: 9 G:15 SSE	WS: 16 G:19 WSW	WS: 5 G:11 WSW	WS: 3 G:13 SSW	WS: 6 G:11 SW	WS: 12 G:14 E	WS: 4 G:10 SSW	WS: 11 G:13 ESE	WS: 11 G:13 ESE	WS: 14 G:16 SE	WS: 12 G:17 SSE	WS: 11 G:16 S	WS: 11 G:15 S	WS: 10 G:15 S	WS: 10 G:14 S	WS: 10 G:14 S	WS: 10 G:15 S	WS: 10 G:15 S	WS: 10 G:15 S	WS: 9 G:15 S	WS: 9 G:15 S	WS: 9 G:15 S	WS: 9 G:15 S	WS: 10 G:16 SSW	WS: 10 G:16 SSW	WS: 10 G:16 SSW	WS: 10 G:16 SSW	WS: 10 G:16 S	WS: 11 G:16 S	WS: 11 G:15 S		
Houston Pilots F - 63/64	WS: 15 G:20 S	WS: 15 G:20 S	WS: 13 G:19 S	WS: 12 G:16 S	WS: 13 G:16 SSE	WS: 14 G:17 SSE	WS: 13 G:16 WSW	WS: 5 G:13 SW	WS: 6 G:14 SSW	WS: 8 G:12 SSW	WS: 15 G:18 SE	WS: 6 G:13 S	WS: 13 G:15 SSE	WS: 15 G:14 SE	WS: 15 G:17 SSE	WS: 13 G:16 SSE	WS: 12 G:16 S	WS: 11 G:15 S	WS: 11 G:15 S	WS: 11 G:15 S	WS: 11 G:15 S	WS: 11 G:16 S	WS: 11 G:16 S	WS: 11 G:16 S	WS: 11 G:16 S	WS: 11 G:16 S	WS: 10 G:16 S	WS: 10 G:16 S	WS: 10 G:16 S	WS: 10 G:16 S	WS: 10 G:17 SSW	WS: 11 G:16 SSW	WS: 11 G:16 SSW	WS: 11 G:16 SSW	WS: 11 G:16 S	WS: 12 G:16 S	WS: 11 G:15 S
Houston Pilots E - 51/52	WS: 16 G:21 S	WS: 15 G:20 S	WS: 13 G:18 S	WS: 12 G:16 S	WS: 14 G:17 SSE	WS: 15 G:19 SSE	WS: 12 G:15 SW	WS: 7 G:14 SW	WS: 12 G:16 S	WS: 11 G:14 S	WS: 17 G:19 SSE	WS: 17 G:20 SSE	WS: 13 G:16 SSE	WS: 10 G:12 ESE	WS: 15 G:17 SSE	WS: 13 G:17 SSE	WS: 12 G:16 S	WS: 12 G:16 S	WS: 12 G:16 S	WS: 12 G:16 S	WS: 12 G:16 S	WS: 12 G:16 S	WS: 12 G:16 S	WS: 12 G:16 S	WS: 11 G:16 S	WS: 11 G:16 S	WS: 11 G:16 S	WS: 11 G:16 S	WS: 11 G:17 S	WS: 11 G:17 SSW	WS: 11 G:17 SSW	WS: 11 G:17 SSW	WS: 12 G:17 SSW	WS: 11 G:17 SSW	WS: 12 G:16 S		
Houston Pilots D - 37/38	WS: 15 G:20 S	WS: 14 G:20 S	WS: 13 G:18 S	WS: 12 G:16 S	WS: 14 G:18 SSE	WS: 16 G:20 SSW	WS: 12 G:16 SSW	WS: 11 G:15 SSW	WS: 15 G:18 S	WS: 14 G:16 S	WS: 15 G:18 SSE	WS: 20 G:23 SSE	WS: 12 G:17 SSE	WS: 11 G:13 ESE	WS: 12 G:16 SSE	WS: 13 G:16 SSE	WS: 12 G:16 S	WS: 12 G:16 S	WS: 12 G:16 S	WS: 12 G:16 S	WS: 12 G:16 S	WS: 12 G:16 S	WS: 12 G:16 S	WS: 12 G:16 S	WS: 12 G:16 S	WS: 12 G:16 S	WS: 12 G:17 S	WS: 12 G:17 S	WS: 12 G:17 S	WS: 12 G:17 S	WS: 12 G:17 S	WS: 12 G:17 S	WS: 12 G:17 S	WS: 12 G:17 S	WS: 12 G:17 S	WS: 12 G:16 S	
Houston Pilots C - 25/26	WS: 13 G:19 S	WS: 12 G:19 S	WS: 11 G:17 S	WS: 12 G:16 S	WS: 12 G:18 SSE	WS: 15 G:20 SSE	WS: 12 G:16 S	WS: 13 G:17 S	WS: 13 G:17 SSW	WS: 15 G:18 SSE	WS: 16 G:17 SE	WS: 11 G:14 SE	WS: 9 G:14 ESE	WS: 12 G:16 SSE	WS: 12 G:16 S	WS: 12 G:16 S	WS: 12 G:16 S	WS: 12 G:15 S	WS: 12 G:15 S	WS: 12 G:15 S	WS: 12 G:15 S	WS: 12 G:16 S	WS: 12 G:16 S	WS: 12 G:16 S	WS: 12 G:16 S	WS: 12 G:16 S	WS: 13 G:17 S	WS: 12 G:17 S	WS: 12 G:17 S	WS: 12 G:17 S	WS: 12 G:18 S	WS: 12 G:17 S	WS: 12 G:17 S	WS: 12 G:17 S	WS: 12 G:17 S	WS: 12 G:17 S	
Houston Pilots B - 11/12	WS: 14 G:20 S	WS: 14 G:19 S	WS: 13 G:18 S	WS: 12 G:16 S	WS: 14 G:18 SSE	WS: 15 G:19 SSE	WS: 12 G:16 S	WS: 14 G:17 S	WS: 13 G:17 SSW	WS: 18 G:20 SSE	WS: 11 G:15 SE	WS: 15 G:19 SE	WS: 10 G:14 ESE	WS: 13 G:13 ESE	WS: 10 G:16 SSE	WS: 12 G:16 S	WS: 12 G:16 S	WS: 12 G:15 SSE	WS: 12 G:15 SSE	WS: 13 G:15 SSE	WS: 12 G:15 S	WS: 12 G:15 S	WS: 13 G:16 S	WS: 13 G:16 S	WS: 13 G:16 S	WS: 13 G:16 S	WS: 13 G:17 S	WS: 13 G:17 S	WS: 13 G:17 S	WS: 13 G:17 S	WS: 12 G:18 S	WS: 13 G:18 SSW	WS: 13 G:17 SSW	WS: 12 G:17 SSW	WS: 12 G:17 SSW	WS: 12 G:16 SSW	
Houston Pilots A - 1 & 2 Bravo	WS: 18 G:21 S	WS: 18 G:21 S	WS: 16 G:19 SSE	WS: 15 G:17 S	WS: 16 G:18 SSE	WS: 16 G:19 S	WS: 14 G:17 S	WS: 13 G:17 S	WS: 15 G:19 S	WS: 9 G:13 SSE	WS: 11 G:15 SW	WS: 7 G:10 ESE	WS: 10 G:16 ESE	WS: 14 G:16 ESE	WS: 13 G:16 SSE	WS: 13 G:16 S	WS: 14 G:16 SSE	WS: 14 G:16 SSE	WS: 14 G:16 SSE	WS: 14 G:16 SSE	WS: 14 G:16 SSE	WS: 14 G:16 SSE	WS: 14 G:16 S	WS: 14 G:16 S	WS: 14 G:16 S	WS: 14 G:16 S	WS: 14 G:16 S	WS: 14 G:18 S	WS: 13 G:18 SSW	WS: 13 G:17 SSW	WS: 12 G:17 SSW	WS: 12 G:17 SSW	WS: 12 G:17 SSW	WS: 12 G:16 SSW			

See slides below for official thoughts on winds.

Houston Pilots: Mon. 8/22/2022

Forecast Discussion

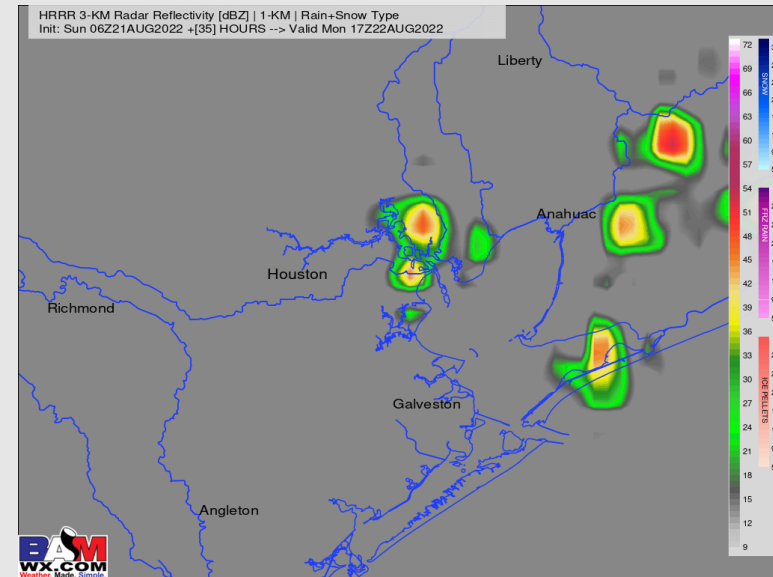
Precip: 30% chance for hit or miss showers/storms possible from ~5-6AM through ~5-6PM Monday. Better coverage for showers/storms will be NE of the HOU Metro area after 4/5PM with drier conditions working in.

Wind: Sustained winds out of the SSW 10-15 MPH. Winds north of Morgan's Point 5-10 MPH. Gusts of ~20 MPH possible. Isolated stronger storms could produce wind gusts of 30-40+ MPH.

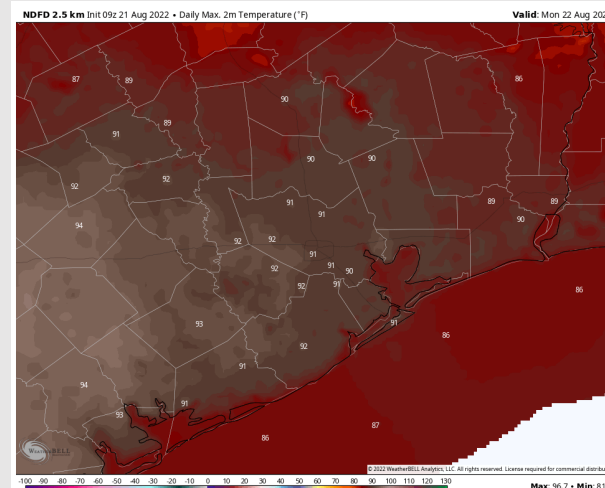
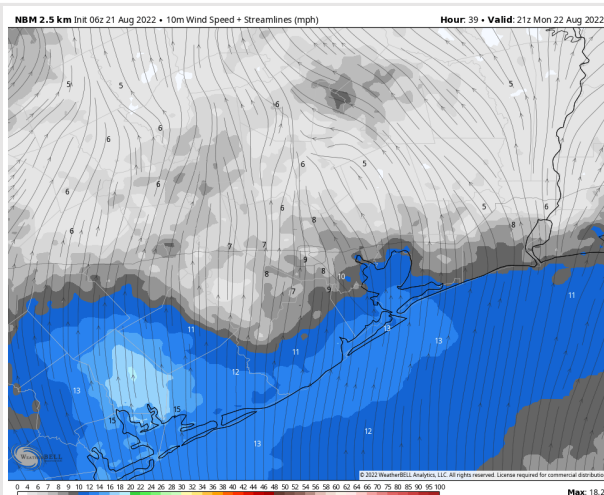
Temps: High temps in the mid 80s F near the boarding station and new 90F at all other stations.

Visibility: Not anticipating fog concerns at this time.

Precip Forecast: 12 PM CT



Wind Speed
4 PM CT



High Temps
MON

Houston Pilots: Tue. 8/23/2022

Forecast Discussion

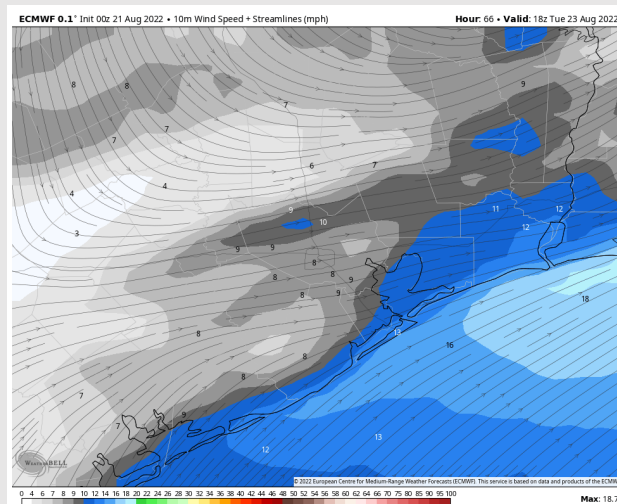
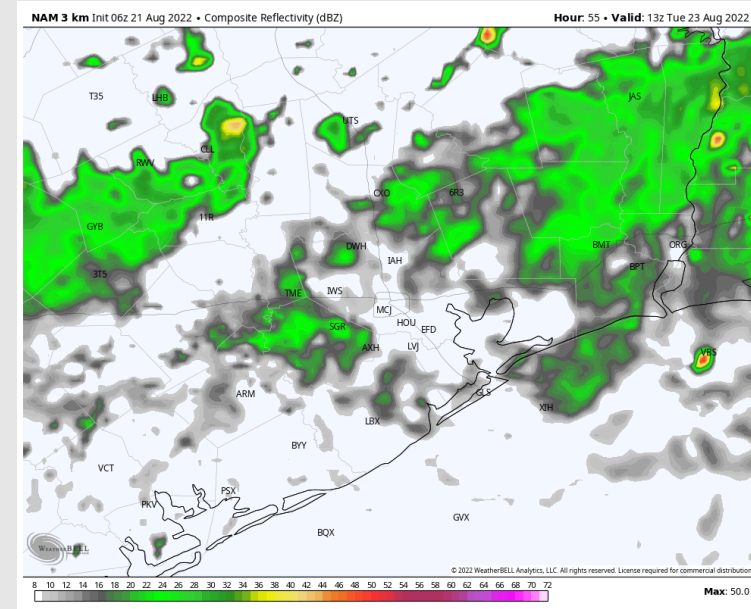
Precip: Expecting a line of broken showers/thunderstorms to move in around 1AM and linger in the area into the early afternoon. Better coverage near inland stations. These will likely be weakening on approach.

Wind: Sustained winds 13 – 18 MPH out of the WSW in the AM Tuesday with winds north of Morgan's Point 5-10 MPH. In the PM, winds will be 10 – 15 MPH. Gusts up to 30 MPH possible under stronger cells.

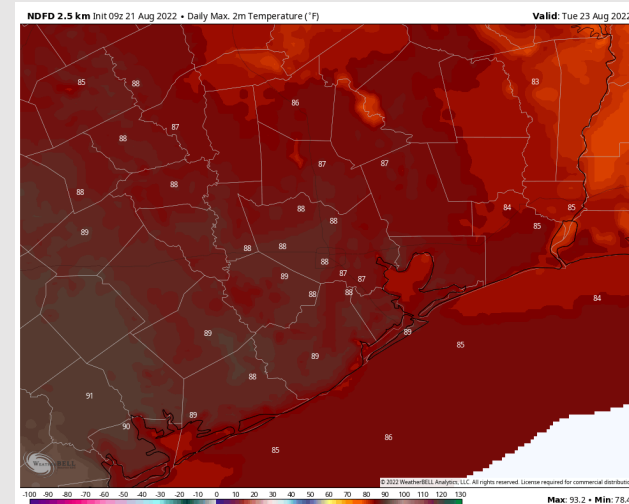
Temps: High temps in the mid to upper 80s F for all stations.

Visibility: Not anticipating fog concerns at this time.

Precip Forecast: 8 AM CT

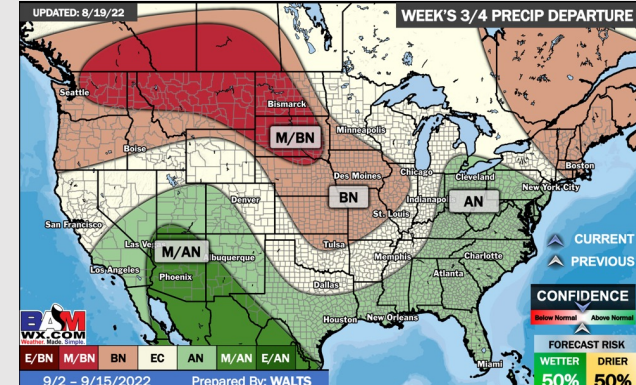
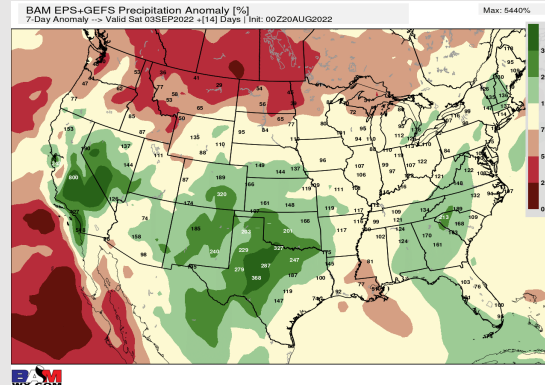
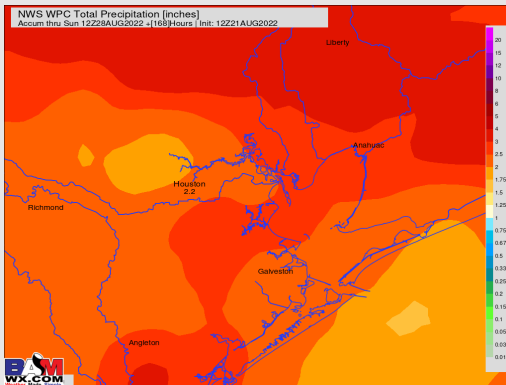
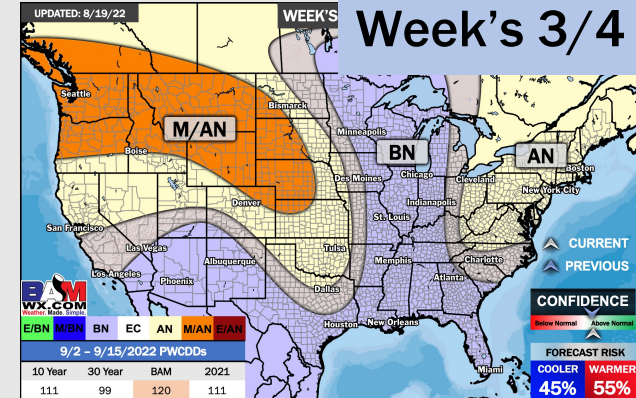
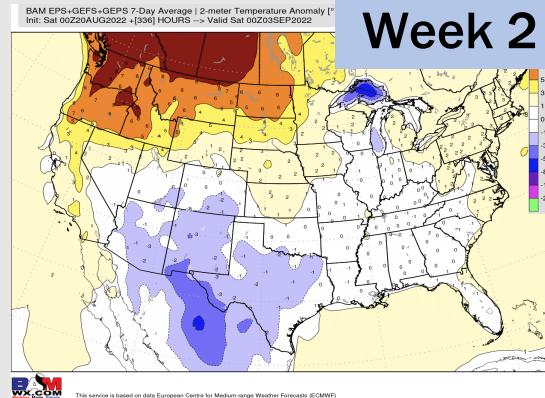
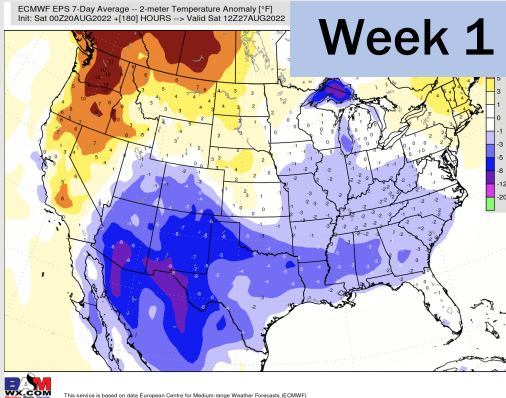


Wind Speed
1PM CT



High Temps
TUE

Houston Pilots: 8/21/22



- Temperatures expected to be below normal this week. Increased rainfall chances as storms move through today and especially mid to late next week.
- Week 2 likely features near normal temperatures and near normal precipitation.
- The weeks ¾ timeframe into mid September looks to feature below normal temperatures and above normal risks for precip.