

Houston Pilots Forecast Package



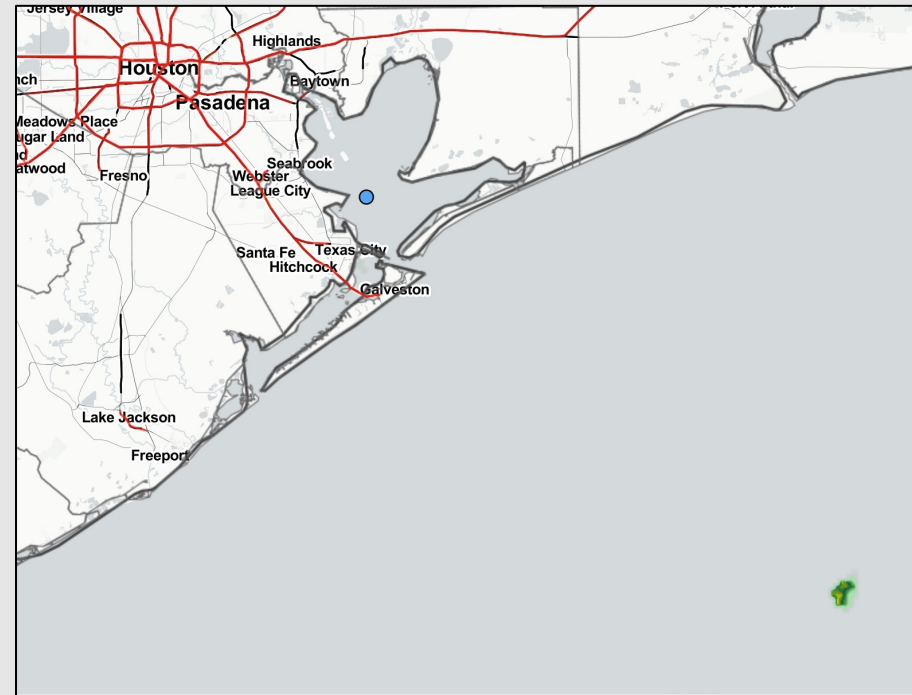
Updated: 4:30 AM CT

Saturday, August 20, 2022

Forecaster: Kirk Hinz

Weather Headlines

- Eyeing a few opportunities for storms over the next 2-3 days, especially in the PM hours. Hazardous weather, such as lightning and strong winds, will likely be a factor.
- Tropical threats will continue to remain low ahead. There is a weak disturbance in the SW Caribbean that will be monitoring for, but as of now this is not a concern.
- Biggest wind risks will be associated with storms moving through this weekend.

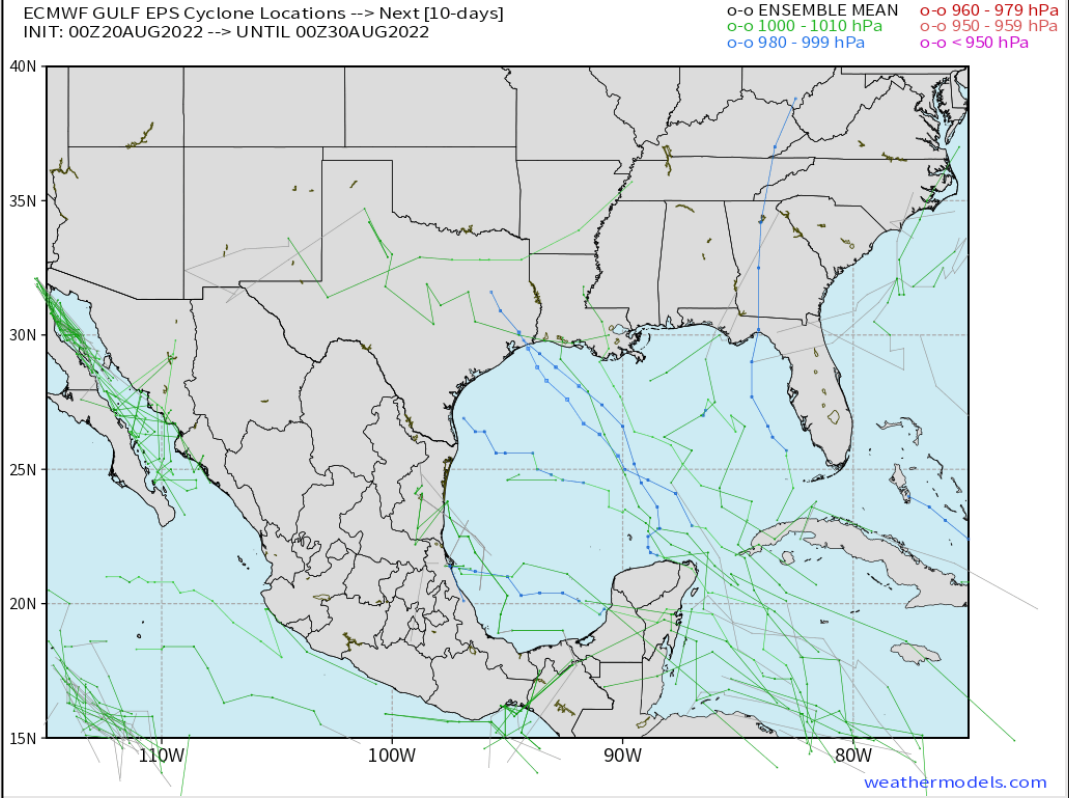


Radar/ NWS Alerts: 4:30 AM CT



As always, please do not hesitate to reach out to us with any forecast questions via the chat option on the Weather Porthole or our on-call number, **(317)-560-8122** press 1 for forecast questions.

Various model tracks next 10 days



No tropical threat for Houston expected over the next 7-10 days. A tropical wave in the southwestern Caribbean could slowly become more organized over the next week. Will continue to monitor, but not overly concerned with future impacts at this time.

Confidence



Above Normal Below Normal

Houston Pilots Wind Report



Example

Sustained wind 13 MPH
Gusts 18 MPH
Wind from the N

WS: 13
G:18
N

Time	08-20-2022 Sat 3am	08-20-2022 Sat 4am	08-20-2022 Sat 5am	08-20-2022 Sat 6am	08-20-2022 Sat 7am	08-20-2022 Sat 8am	08-20-2022 Sat 9am	08-20-2022 Sat 10am	08-20-2022 Sat 11am	08-20-2022 Sat 12pm	08-20-2022 Sat 1pm	08-20-2022 Sat 2pm	08-20-2022 Sat 3pm	08-20-2022 Sat 4pm	08-20-2022 Sat 5pm	08-20-2022 Sat 6pm	08-20-2022 Sat 7pm	08-20-2022 Sat 8pm	08-20-2022 Sat 9pm	08-20-2022 Sat 10pm	08-20-2022 Sat 11pm	08-21-2022 Sun 12am	08-21-2022 Sun 1am	08-21-2022 Sun 2am	08-21-2022 Sun 3am	08-21-2022 Sun 4am	08-21-2022 Sun 5am	08-21-2022 Sun 6am	08-21-2022 Sun 7am	08-21-2022 Sun 8am	08-21-2022 Sun 9am	08-21-2022 Sun 10am	08-21-2022 Sun 11am	08-21-2022 Sun 12pm	08-21-2022 Sun 1pm	08-21-2022 Sun 2pm			
Houston Pilots N - 610 Bridge	WS: 3 G:10 SE	WS: 3 G:10 SSE	WS: 1 G:8 WSW	WS: 0 G:8 ESE	WS: 2 G:6 E	WS: 1 G:2 ENE	WS: 1 G:5 NE	WS: 2 G:8 ESE	WS: 3 G:7 SE	WS: 2 G:6 SSE	WS: 8 G:8 SSE	WS: 6 G:8 SSE	WS: 19 G:32 SW	WS: 9 G:14 S	WS: 5 G:10 ESE	WS: 8 G:15 SE	WS: 8 G:15 SSE	WS: 7 G:13 SSE	WS: 6 G:12 SSE	WS: 5 G:10 SSE	WS: 4 G:9 SSE	WS: 3 G:7 SSE	WS: 3 G:6 SSE	WS: 3 G:5 SSE	WS: 3 G:5 SE	WS: 3 G:5 S	WS: 2 G:3 SE	WS: 2 G:4 SSE	WS: 2 G:3 SE	WS: 2 G:3 SE	WS: 2 G:4 SSE	WS: 3 G:6 ESE	WS: 3 G:6 SSE	WS: 5 G:9 SSE	WS: 7 G:12 SSE	WS: 7 G:13 SSE	WS: 8 G:12 SSE	WS: 9 G:15 SSE	WS: 9 G:17 S
Houston Pilots M - Kinder 1	WS: 3 G:10 SSE	WS: 3 G:10 SSE	WS: 1 G:8 SW	WS: 1 G:7 E	WS: 2 G:6 E	WS: 1 G:2 ENE	WS: 1 G:5 NE	WS: 2 G:8 ESE	WS: 7 G:4 SE	WS: 1 G:5 SE	WS: 9 G:13 SSE	WS: 5 G:7 S	WS: 19 G:31 SW	WS: 9 G:13 SSE	WS: 5 G:10 ESE	WS: 8 G:15 SE	WS: 9 G:15 SSE	WS: 7 G:13 SSE	WS: 6 G:12 SSE	WS: 5 G:10 SSE	WS: 4 G:9 SSE	WS: 3 G:7 SSE	WS: 3 G:6 SSE	WS: 3 G:5 SSE	WS: 3 G:5 S	WS: 3 G:4 S	WS: 2 G:3 SE	WS: 2 G:3 SSE	WS: 2 G:3 SSE	WS: 2 G:4 SSE	WS: 3 G:6 ESE	WS: 3 G:6 SSE	WS: 5 G:9 SSE	WS: 7 G:12 SSE	WS: 7 G:13 SSE	WS: 8 G:12 SSE	WS: 9 G:15 S	WS: 9 G:16 S	
Houston Pilots L - Greens Bayou	WS: 3 G:11 SSE	WS: 2 G:10 S	WS: 1 G:8 SE	WS: 1 G:7 ENE	WS: 2 G:6 E	WS: 1 G:1 NE	WS: 1 G:4 NE	WS: 2 G:8 E	WS: 9 G:6 SE	WS: 1 G:5 SSE	WS: 7 G:10 S	WS: 5 G:6 S	WS: 16 G:25 SW	WS: 9 G:14 SSE	WS: 5 G:9 ESE	WS: 9 G:15 SE	WS: 9 G:15 SSE	WS: 7 G:13 SSE	WS: 6 G:12 SSE	WS: 5 G:10 SSE	WS: 4 G:9 SSE	WS: 4 G:7 SSE	WS: 3 G:6 S	WS: 3 G:5 SSE	WS: 3 G:4 S	WS: 2 G:3 SE	WS: 2 G:3 SSE	WS: 2 G:4 SSE	WS: 3 G:6 ESE	WS: 3 G:6 SSE	WS: 5 G:9 SSE	WS: 7 G:12 SSE	WS: 7 G:13 SSE	WS: 8 G:12 SSE	WS: 9 G:15 SSE	WS: 9 G:16 S			
Houston Pilots K - Shell Crude	WS: 3 G:12 SSE	WS: 2 G:11 SSW	WS: 1 G:9 SE	WS: 1 G:7 E	WS: 2 G:6 E	WS: 1 G:2 NE	WS: 2 G:4 NNE	WS: 2 G:8 E	WS: 7 G:9 SE	WS: 1 G:5 SSE	WS: 8 G:11 S	WS: 5 G:6 SSW	WS: 14 G:21 SSW	WS: 9 G:15 SE	WS: 4 G:9 ESE	WS: 9 G:14 SSE	WS: 9 G:15 SSE	WS: 7 G:13 SSE	WS: 6 G:12 SSE	WS: 5 G:11 SSE	WS: 5 G:9 SSE	WS: 4 G:7 SSE	WS: 3 G:6 SSE	WS: 3 G:5 SSE	WS: 3 G:5 S	WS: 3 G:4 S	WS: 2 G:3 SSE	WS: 2 G:4 SSE	WS: 2 G:4 SSE	WS: 2 G:5 SSE	WS: 3 G:6 ESE	WS: 3 G:6 SSE	WS: 6 G:9 SSE	WS: 7 G:12 SSE	WS: 8 G:13 SSE	WS: 8 G:13 SSE	WS: 9 G:15 SSE	WS: 9 G:16 S	
Houston Pilots J - Lynchburg Ferries	WS: 2 G:12 SSW	WS: 1 G:11 S	WS: 1 G:10 E	WS: 1 G:7 NE	WS: 2 G:6 E	WS: 3 G:3 NE	WS: 2 G:4 NNE	WS: 2 G:8 E	WS: 8 G:11 S	WS: 2 G:5 S	WS: 5 G:8 S	WS: 6 G:6 SSW	WS: 10 G:15 S	WS: 10 G:17 SSE	WS: 4 G:9 ESE	WS: 10 G:14 SSE	WS: 10 G:16 SSE	WS: 8 G:13 SSE	WS: 7 G:12 SSE	WS: 6 G:11 SSE	WS: 5 G:9 SSE	WS: 5 G:8 SSE	WS: 4 G:7 SSE	WS: 4 G:6 SSE	WS: 3 G:5 SSE	WS: 3 G:5 S	WS: 3 G:4 SSE	WS: 3 G:4 SSE	WS: 3 G:5 SSE	WS: 3 G:5 SSE	WS: 3 G:6 ESE	WS: 3 G:6 SSE	WS: 6 G:9 SSE	WS: 7 G:12 SSE	WS: 8 G:13 SSE	WS: 8 G:13 SSE	WS: 10 G:14 SSE	WS: 10 G:16 SSE	
Houston Pilots I - Exxon 3	WS: 4 G:13 SSW	WS: 3 G:14 S	WS: 2 G:12 S	WS: 2 G:9 ESE	WS: 2 G:9 SE	WS: 1 G:6 NE	WS: 3 G:6 NNE	WS: 2 G:7 E	WS: 8 G:12 S	WS: 2 G:6 SSE	WS: 5 G:7 S	WS: 5 G:6 S	WS: 11 G:15 SSE	WS: 8 G:16 S	WS: 3 G:9 ESE	WS: 10 G:14 SSE	WS: 10 G:15 SSE	WS: 8 G:13 SSE	WS: 7 G:13 SSE	WS: 6 G:12 SSE	WS: 6 G:11 SSE	WS: 5 G:9 SSE	WS: 5 G:9 SSE	WS: 5 G:8 S	WS: 4 G:7 S	WS: 4 G:6 S	WS: 3 G:5 SSE	WS: 3 G:6 SSE	WS: 3 G:6 SSE	WS: 3 G:7 SSE	WS: 4 G:10 SSE	WS: 6 G:11 SSE	WS: 7 G:12 SSE	WS: 9 G:13 SSE	WS: 9 G:13 SSE	WS: 10 G:14 SSE	WS: 10 G:15 SSE	WS: 11 G:17 S	
Houston Pilots H - Morgans Point	WS: 7 G:15 S	WS: 7 G:15 SSW	WS: 6 G:14 SW	WS: 4 G:11 S	WS: 4 G:12 SSW	WS: 3 G:10 SE	WS: 2 G:7 ENE	WS: 2 G:6 ENE	WS: 6 G:10 S	WS: 2 G:6 SSE	WS: 5 G:7 S	WS: 5 G:7 SSE	WS: 16 G:22 SSE	WS: 7 G:13 S	WS: 4 G:8 SE	WS: 11 G:14 SSE	WS: 11 G:15 SSE	WS: 8 G:14 SSE	WS: 8 G:14 SSE	WS: 8 G:12 SSE	WS: 7 G:11 SSE	WS: 7 G:11 S	WS: 6 G:10 SSE	WS: 6 G:10 SSW	WS: 5 G:9 SSE	WS: 5 G:9 SSE	WS: 5 G:8 SSE	WS: 5 G:8 SSE	WS: 5 G:8 SSE	WS: 5 G:9 SSE	WS: 8 G:11 S	WS: 8 G:12 S	WS: 9 G:13 SSE	WS: 10 G:14 SSE	WS: 10 G:14 SSE	WS: 12 G:16 S			
Houston Pilots G - 75/76	WS: 11 G:16 S	WS: 11 G:16 SSW	WS: 12 G:16 SSW	WS: 8 G:14 SSW	WS: 8 G:14 SSW	WS: 5 G:11 SW	WS: 3 G:8 SE	WS: 3 G:6 ESE	WS: 9 G:9 SSW	WS: 2 G:7 SSE	WS: 4 G:7 S	WS: 7 G:9 SSW	WS: 32 G:39 S	WS: 6 G:11 SE	WS: 6 G:9 SSE	WS: 11 G:15 SSE	WS: 11 G:15 SSE	WS: 10 G:15 SSE	WS: 10 G:15 SSE	WS: 10 G:15 S	WS: 9 G:14 S	WS: 9 G:13 S	WS: 9 G:13 S	WS: 9 G:13 S	WS: 8 G:12 S	WS: 8 G:13 S	WS: 7 G:11 S	WS: 7 G:11 S	WS: 7 G:11 S	WS: 7 G:12 SSE	WS: 8 G:12 S	WS: 9 G:13 SSE	WS: 9 G:13 SSE	WS: 10 G:14 SSE	WS: 10 G:14 SSE	WS: 11 G:15 SSE	WS: 11 G:16 S		
Houston Pilots F - 63/64	WS: 12 G:17 SSW	WS: 11 G:16 SSW	WS: 14 G:18 SSW	WS: 10 G:15 SSW	WS: 10 G:15 SSW	WS: 7 G:12 SSW	WS: 5 G:9 SSE	WS: 5 G:5 SSE	WS: 5 G:7 W	WS: 4 G:8 S	WS: 5 G:7 S	WS: 8 G:10 SSW	WS: 32 G:37 SSW	WS: 4 G:9 SSE	WS: 6 G:10 SSE	WS: 12 G:16 SSE	WS: 12 G:16 SSE	WS: 12 G:16 SSE	WS: 12 G:16 SSE	WS: 11 G:16 S	WS: 11 G:15 S	WS: 10 G:15 S	WS: 10 G:14 S	WS: 10 G:14 S	WS: 10 G:14 S	WS: 8 G:13 S	WS: 8 G:13 S	WS: 8 G:12 S	WS: 8 G:12 S	WS: 8 G:12 SSE	WS: 9 G:13 SSE	WS: 9 G:13 SSE	WS: 10 G:14 SSE	WS: 10 G:14 SSE	WS: 12 G:16 SSE	WS: 13 G:16 S			
Houston Pilots E - 51/52	WS: 13 G:17 S	WS: 12 G:16 SSW	WS: 12 G:18 SSW	WS: 13 G:18 SSW	WS: 11 G:16 SSW	WS: 9 G:13 SSW	WS: 6 G:8 SSE	WS: 6 G:8 SSE	WS: 6 G:7 S	WS: 5 G:9 SSE	WS: 8 G:8 SSE	WS: 8 G:9 SSW	WS: 20 G:23 SSW	WS: 2 G:7 SSE	WS: 5 G:9 ESE	WS: 12 G:16 SSE	WS: 12 G:16 SSE	WS: 12 G:16 SSE	WS: 12 G:16 SSE	WS: 12 G:17 SSE	WS: 11 G:16 S	WS: 11 G:15 S	WS: 11 G:15 S	WS: 11 G:15 S	WS: 11 G:15 S	WS: 11 G:15 S	WS: 9 G:13 S	WS: 9 G:13 S	WS: 9 G:12 S	WS: 9 G:13 SSE	WS: 10 G:14 SSE	WS: 10 G:14 SSE	WS: 10 G:14 SSE	WS: 10 G:14 SSE	WS: 12 G:16 SSE	WS: 12 G:16 S			
Houston Pilots D - 37/38	WS: 12 G:17 S	WS: 12 G:16 SSW	WS: 12 G:18 SSW	WS: 14 G:18 SSW	WS: 12 G:16 SSW	WS: 10 G:13 SSW	WS: 8 G:10 S	WS: 8 G:9 S	WS: 6 G:8 S	WS: 8 G:9 S	WS: 8 G:9 S	WS: 9 G:10 S	WS: 13 G:17 SW	WS: 2 G:8 W	WS: 4 G:8 ESE	WS: 12 G:15 SSE	WS: 12 G:15 SSE	WS: 12 G:16 SSE	WS: 12 G:16 SSE	WS: 12 G:17 SSE	WS: 12 G:16 S	WS: 12 G:16 S	WS: 12 G:15 S	WS: 12 G:15 S	WS: 12 G:15 S	WS: 12 G:15 S	WS: 12 G:15 S	WS: 11 G:14 S	WS: 10 G:14 S	WS: 10 G:13 S	WS: 9 G:13 S	WS: 11 G:15 S	WS: 11 G:15 S	WS: 11 G:15 S	WS: 11 G:15 S	WS: 12 G:16 S	WS: 12 G:16 S		
Houston Pilots C - 25/26	WS: 11 G:17 S	WS: 12 G:17 S	WS: 12 G:18 S	WS: 11 G:16 SSW	WS: 9 G:13 SSW	WS: 8 G:11 S	WS: 8 G:9 S	WS: 8 G:8 S	WS: 7 G:8 S	WS: 8 G:9 SSE	WS: 9 G:10 S	WS: 15 G:18 SSE	WS: 11 G:15 SSW	WS: 9 G:9 SSE	WS: 5 G:7 SSE	WS: 12 G:15 SSE	WS: 11 G:15 SSE	WS: 12 G:16 SSE	WS: 12 G:16 SSE	WS: 12 G:17 SSE	WS: 12 G:16 S	WS: 12 G:16 S	WS: 12 G:15 S	WS: 12 G:15 S	WS: 12 G:15 S	WS: 11 G:14 S	WS: 11 G:14 S	WS: 10 G:14 S	WS: 10 G:14 S	WS: 11 G:15 S	WS: 11 G:15 S	WS: 11 G:15 S	WS: 11 G:15 S	WS: 11 G:15 S	WS: 11 G:15 S	WS: 12 G:16 S	WS: 12 G:16 S		
Houston Pilots B - 11/12	WS: 13 G:18 S	WS: 13 G:18 S	WS: 14 G:19 S	WS: 12 G:17 SSW	WS: 12 G:16 SSW	WS: 9 G:14 SSW	WS: 9 G:11 S	WS: 7 G:9 S	WS: 7 G:9 S	WS: 8 G:9 S	WS: 9 G:10 S	WS: 18 G:22 S	WS: 12 G:15 SSW	WS: 9 G:7 SSE	WS: 6 G:8 SE	WS: 12 G:15 SSE	WS: 12 G:15 SSE	WS: 12 G:16 SSE	WS: 12 G:16 SSE	WS: 12 G:17 SSE	WS: 12 G:16 S	WS: 12 G:16 S	WS: 12 G:16 S	WS: 12 G:16 S	WS: 12 G:16 S	WS: 11 G:15 S	WS: 11 G:15 S	WS: 11 G:14 S	WS: 10 G:14 S	WS: 10 G:14 SSE	WS: 11 G:15 S	WS: 11 G:15 S	WS: 11 G:15 S	WS: 11 G:15 S	WS: 12 G:16 S	WS: 12 G:16 S			
Houston Pilots A - 1 & 2 Bravo	WS: 17 G:20 S	WS: 18 G:19 S	WS: 17 G:19 S	WS: 16 G:18 SSW	WS: 16 G:17 SSW	WS: 14 G:15 SSW	WS: 11 G:12 S	WS: 9 G:10 S	WS: 8 G:9 S	WS: 8 G:9 S	WS: 9 G:10 S	WS: 13 G:14 SSE	WS: 16 G:20 S	WS: 13 G:15 S	WS: 6 G:7 SSE	WS: 6 G:7 SSE	WS: 13 G:15 SSE	WS: 13 G:15 SSE	WS: 13 G:16 SSE	WS: 13 G:16 SSE	WS: 14 G:17 SSE	WS: 14 G:17 SSE	WS: 13 G:17 SSE	WS: 13 G:17 SSE	WS: 14 G:17 S	WS: 14 G:17 S	WS: 14 G:16 S	WS: 13 G:16 S	WS: 12 G:15 S	WS: 12 G:15 S	WS: 11 G:15 S	WS: 11 G:15 S	WS: 12 G:16 S	WS: 12 G:16 S	WS: 12 G:16 S	WS: 14 G:16 S			

See slides below for official thoughts on winds.

Houston Pilots: Sat. 8/20/2022

Forecast Discussion

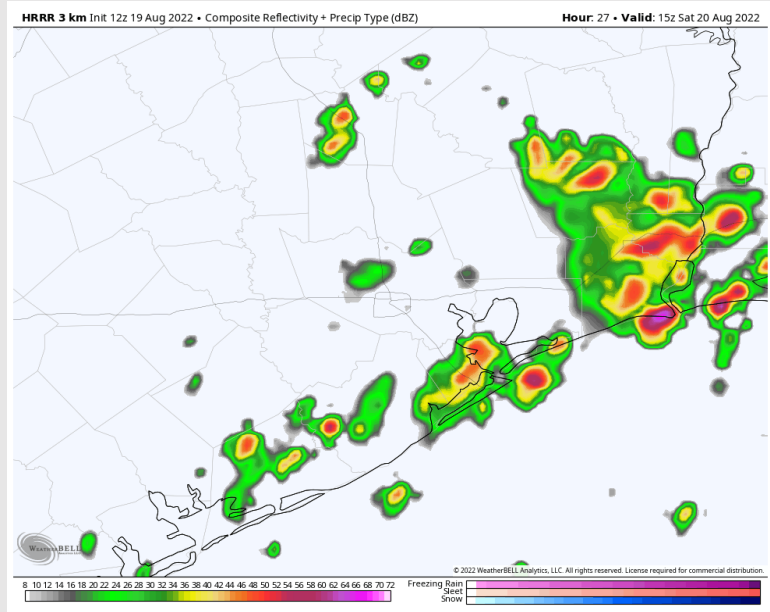
Precip: Chances for scattered showers/storms of around 30% this morning. More widespread chances increasing to 50-60% specially after 12/1PM until 6PM. From 6-10PM, chances back down to 30%. Anticipating only a ~10/20% chance of rain overnight. Lightning, locally heavy downpours and strong wind gusts are possible under any stronger cell.

Wind: Sustained winds out of the south at 3-8 MPH this AM north of Morgan's Point. Areas south seeing 8-13 MPH this AM. After 1PM, winds at all stations 8-13 MPH. Brief Gusts up to 30-40+ MPH possible under stronger storms.

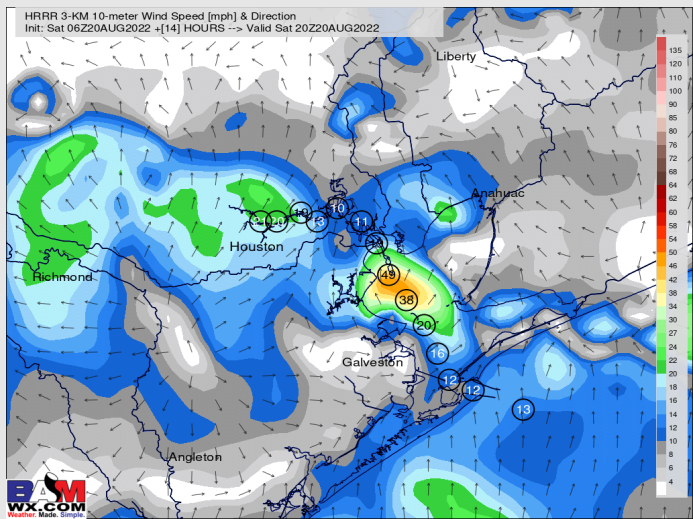
Temps: High temps today in the upper 80s F near the boarding station and in the low to mid 90s F at all other stations.

Visibility: Not anticipating fog concerns at this time.

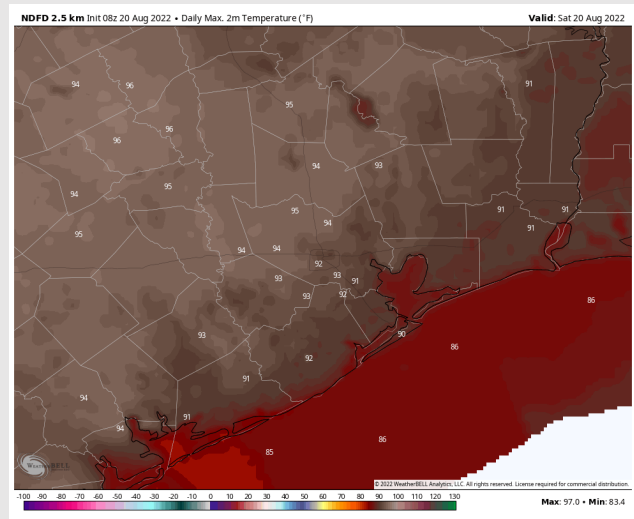
Precip Forecast: 3 PM CT



Wind Speed
3 PM CT



High Temps
SAT



Houston Pilots: Sun. 8/21/2022



Forecast Discussion

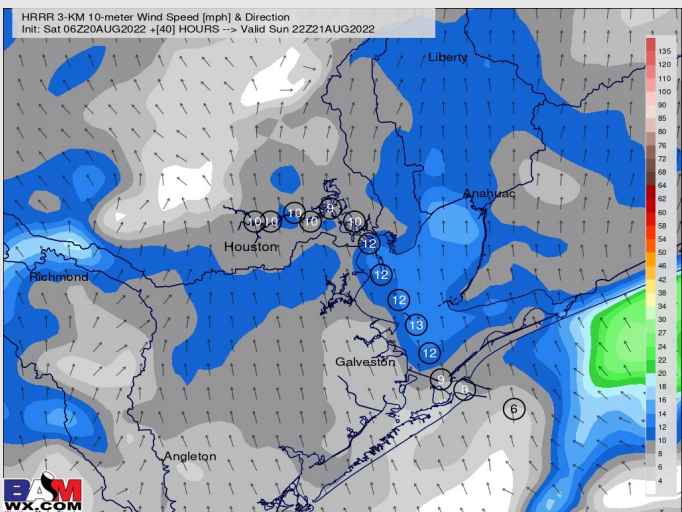
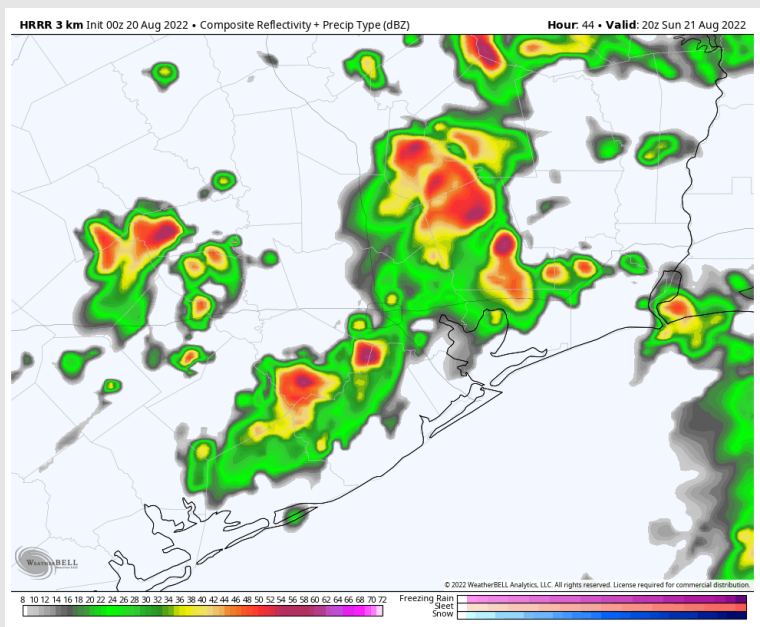
Precip: Expecting scattered 20-30% chances for showers/storms beginning at ~3AM with chances increasing to 50-60% for more widespread coverage between 8/9AM – 5/6PM. Expecting drier conditions after 7/8PM. Lightning, gusty winds and locally heavy downpours possible under stronger cells.

Wind: Sustained winds out of the SSE 10-15 MPH in the AM with winds north of Morgan's Point 3-8 MPH. After 6/7PM winds calm back down to 5-10 MPH out of the SSE/ Wind gusts of 30+ MPH will be possible under any stronger storms.

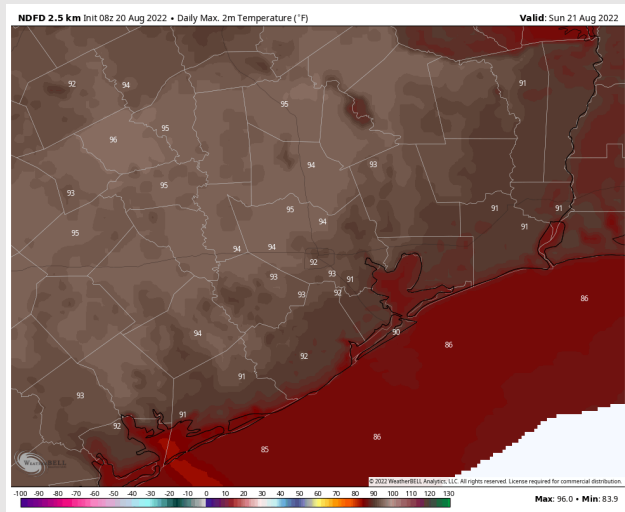
Temps: High temps Sunday in the upper 80s F near the boarding station and in the low 90s F for all other stations.

Visibility: Not anticipating fog concerns at this time.

Precip Forecast: 11 AM CT



Wind Speed
5 PM CT



High Temps
SUN

Houston Pilots: Mon. 8/22/2022



Forecast Discussion

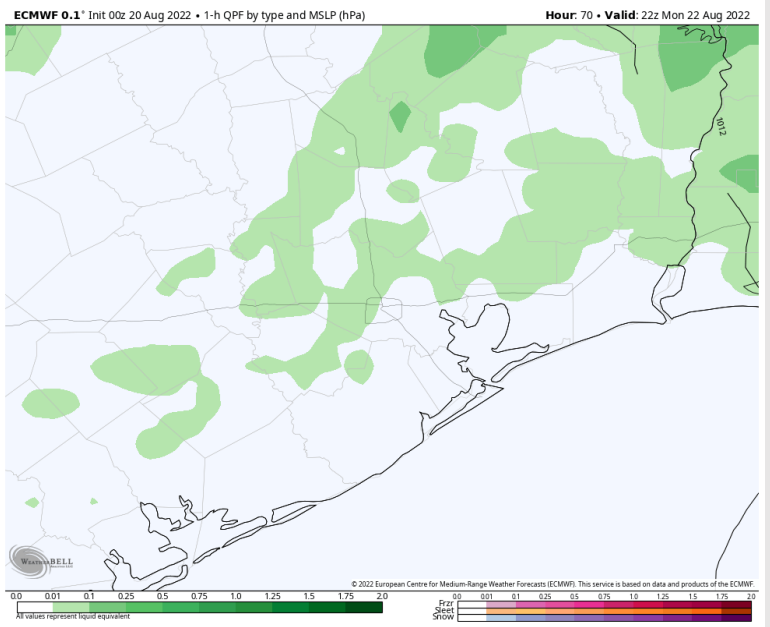
Precip: Isolated showers/storms possible from ~5/6AM through ~2/3AM Monday. Better coverage will be NE of the HOU Metro area after 4/5PM with drier conditions working in.

Wind: Sustained winds out of the south 10-15 MPH. Winds north of Morgan's Point 5-10 MPH. Gusts of 20-25 MPH possible.

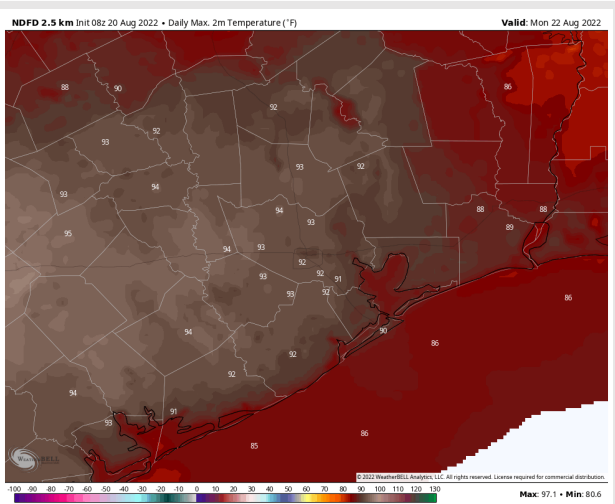
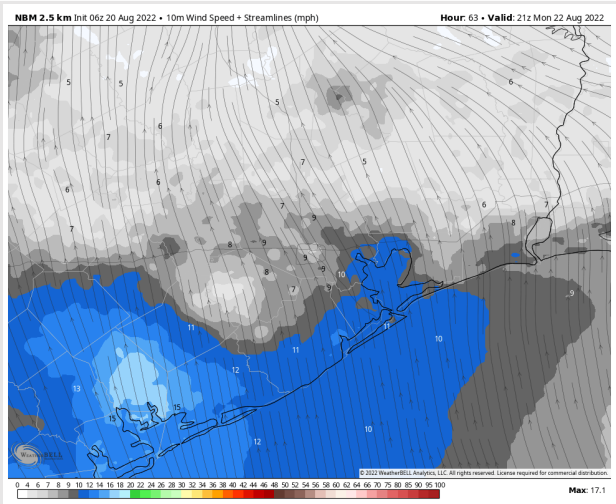
Temps: High temps in the mid 80s F near the boarding station and in the low 90s F near all other stations.

Visibility: Not anticipating fog concerns at this time.

Precip Forecast: 5 PM CT

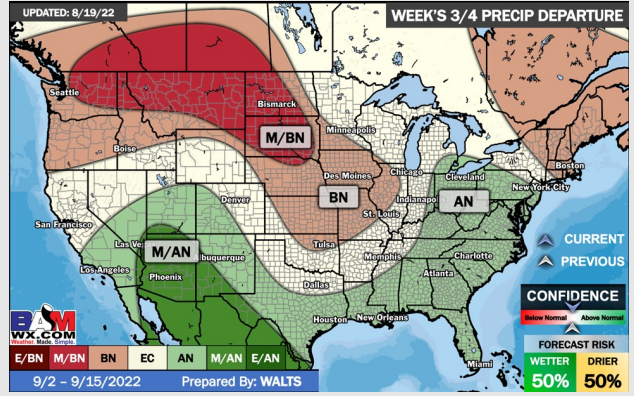
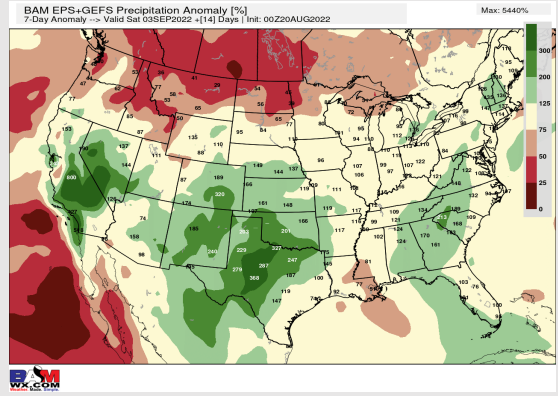
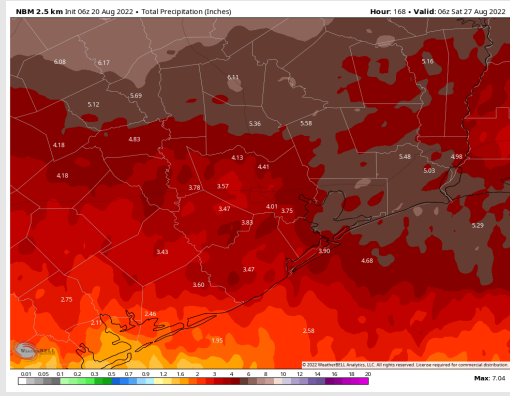
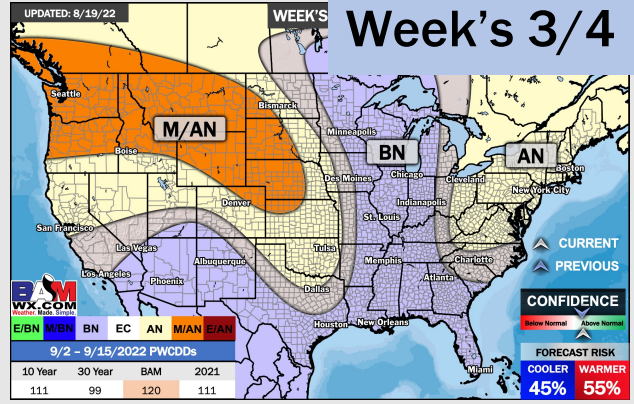
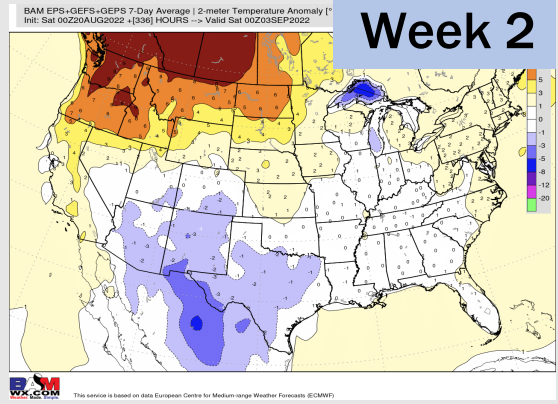
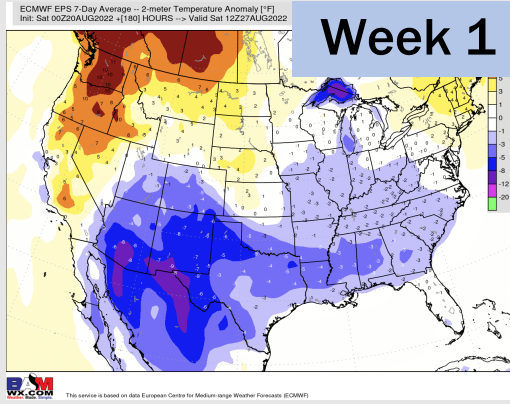


Wind Speed 4 PM CT



High Temps MON

Houston Pilots: 8/20/22



- Temperatures expected to be below normal this week. Increased precip chances as storms move through the weekend and especially mid to late next week.
- Week 2 likely features near normal temperatures and near normal precipitation.
- The weeks ¾ timeframe into mid September looks to feature below normal temperatures and above normal risks for precip.