

Houston Pilots Forecast Package

Houston Pilots

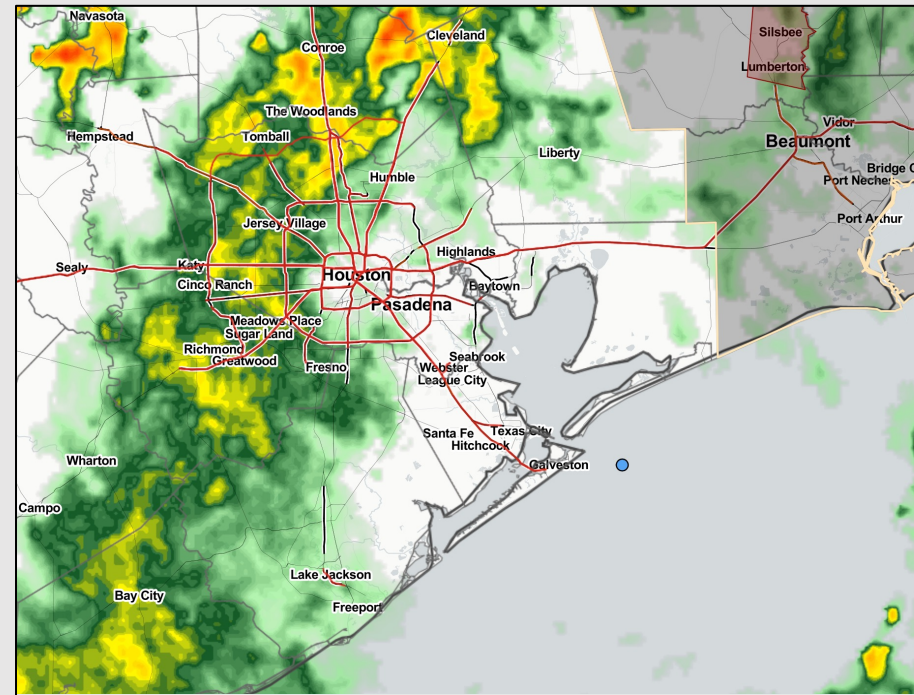
Updated: 2:00 PM CT

Friday, August 19, 2022

Forecaster: Alyssa McClung

Weather Headlines

- Precipitation west of Houston/Galveston will continue to seep into the area over the next few hours.
- Eyeing a few opportunities for storms over the next 3 days, especially in the evening hours. Severe weather, such as lightning and strong winds, will be a factor
- Tropical threats will continue to remain rather low. There is a weak disturbance in the SW Caribbean that could move NW into potentially far S TX, but as of now this is not a concern.
- Biggest wind risks will be associated with storms moving through this evening and tomorrow.

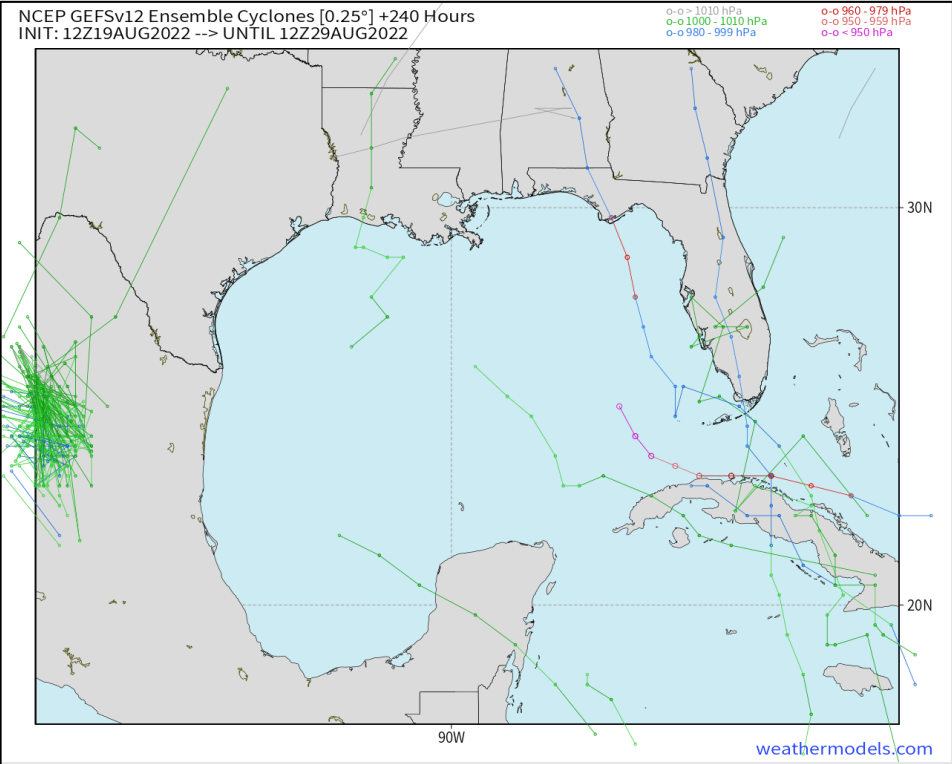


Radar/ NWS Alerts: 2:00 PM CT



As always, please do not hesitate to reach out to us with any forecast questions via the chat option on the Weather Porthole or our on-call number, **(317)-560-8122** press 1 for forecast questions.

Various model tracks next 10 days



No tropical threat for Houston expected over the next 7-10 days. A tropical wave in the southwestern Caribbean could slowly become more organized over the next week. Will continue to monitor, but not overly concerned with future impacts at this time.

Confidence

Above Normal Below Normal

Houston Pilots Wind Report



Example

Sustained wind 13 MPH

Gusts 18 MPH

Wind from the N

WS: 13

G:18

N

Time	08-19-2022 Fri 1pm	08-19-2022 Fri 2pm	08-19-2022 Fri 3pm	08-19-2022 Fri 4pm	08-19-2022 Fri 5pm	08-19-2022 Fri 6pm	08-19-2022 Fri 7pm	08-19-2022 Fri 8pm	08-19-2022 Fri 9pm	08-19-2022 Fri 10pm	08-19-2022 Fri 11pm	08-20-2022 Sat 12am	08-20-2022 Sat 1am	08-20-2022 Sat 2am	08-20-2022 Sat 3am	08-20-2022 Sat 4am	08-20-2022 Sat 5am	08-20-2022 Sat 6am	08-20-2022 Sat 7am	08-20-2022 Sat 8am	08-20-2022 Sat 9am	08-20-2022 Sat 10am	08-20-2022 Sat 11am	08-20-2022 Sat 12pm	08-20-2022 Sat 1pm	08-20-2022 Sat 2pm	08-20-2022 Sat 3pm	08-20-2022 Sat 4pm	08-20-2022 Sat 5pm	08-20-2022 Sat 6pm	08-20-2022 Sat 7pm	08-20-2022 Sat 8pm	08-20-2022 Sat 9pm	08-20-2022 Sat 10pm	08-20-2022 Sat 11pm	08-21-2022 Sun 12am	
Houston Pilots N - 610 Bridge	WS: 2 G:3 W	WS: 5 G:6 SSE	WS: 7 G:12 WSW	WS: 5 G:8 SE	WS: 6 G:10 SE	WS: 4 G:10 SSE	WS: 3 G:9 S	WS: 1 G:6 SSW	WS: 4 G:4 ESE	WS: 4 G:7 SE	WS: 3 G:7 SSE	WS: 2 G:5 SSE	WS: 2 G:5 S	WS: 2 G:6 SSE	WS: 2 G:3 SE	WS: 1 G:3 SSE	WS: 1 G:3 SSE	WS: 1 G:3 SSE	WS: 1 G:3 S	WS: 2 G:4 SSE	WS: 4 G:7 S	WS: 5 G:9 SSW	WS: 5 G:11 S	WS: 6 G:11 SSE	WS: 8 G:13 SSE	WS: 7 G:14 S	WS: 8 G:15 SSE	WS: 8 G:15 SE	WS: 9 G:16 SSE	WS: 9 G:16 SSE	WS: 9 G:16 SSE	WS: 9 G:16 SSE	WS: 7 G:14 SSE	WS: 7 G:14 SSE	WS: 5 G:11 SSE	WS: 5 G:10 SSE	WS: 4 G:9 S
Houston Pilots M - Kinder 1	WS: 2 G:3 W	WS: 4 G:5 SSW	WS: 8 G:15 WSW	WS: 5 G:8 SE	WS: 7 G:10 SE	WS: 5 G:11 SSE	WS: 3 G:9 S	WS: 1 G:5 SW	WS: 1 G:4 SE	WS: 4 G:7 SE	WS: 3 G:7 SSE	WS: 2 G:5 SSE	WS: 2 G:5 SSE	WS: 3 G:6 SSE	WS: 1 G:3 SE	WS: 1 G:3 SSE	WS: 1 G:3 SSE	WS: 1 G:3 SSE	WS: 1 G:3 S	WS: 2 G:4 SSE	WS: 4 G:7 S	WS: 5 G:9 SSW	WS: 6 G:11 S	WS: 7 G:11 SSE	WS: 8 G:13 SSE	WS: 7 G:14 S	WS: 8 G:15 SSE	WS: 9 G:16 SSE	WS: 9 G:16 SSE	WS: 9 G:16 SSE	WS: 9 G:16 SSE	WS: 7 G:14 SSE	WS: 7 G:14 SSE	WS: 5 G:11 SSE	WS: 5 G:10 SSE	WS: 4 G:9 S	
Houston Pilots L - Greens Bayou	WS: 2 G:4 W	WS: 3 G:5 SW	WS: 10 G:17 SW	WS: 6 G:11 SSE	WS: 7 G:12 SE	WS: 5 G:12 SSE	WS: 3 G:9 S	WS: 1 G:5 WSW	WS: 1 G:4 S	WS: 4 G:8 SSE	WS: 3 G:7 SSE	WS: 3 G:6 SSE	WS: 2 G:6 S	WS: 2 G:6 SSE	WS: 1 G:3 ESE	WS: 1 G:2 SSE	WS: 1 G:2 SSE	WS: 1 G:3 SSE	WS: 1 G:3 SSW	WS: 2 G:4 SSE	WS: 4 G:7 S	WS: 5 G:9 SSW	WS: 6 G:10 S	WS: 7 G:11 SSE	WS: 8 G:12 SE	WS: 7 G:13 SSE	WS: 8 G:14 SSE	WS: 9 G:15 SSE	WS: 9 G:16 SSE	WS: 9 G:16 SSE	WS: 10 G:17 SSE	WS: 10 G:17 SSE	WS: 7 G:14 SSE	WS: 6 G:13 SSE	WS: 5 G:11 SSE	WS: 5 G:10 SSE	WS: 4 G:9 S
Houston Pilots K - Shell Crude	WS: 2 G:4 WSW	WS: 4 G:5 S	WS: 9 G:15 WSW	WS: 6 G:11 SSE	WS: 7 G:12 SE	WS: 5 G:12 SSE	WS: 4 G:9 S	WS: 2 G:5 WSW	WS: 1 G:4 S	WS: 4 G:7 SSE	WS: 3 G:7 SSE	WS: 2 G:6 SSE	WS: 3 G:6 SSE	WS: 2 G:6 SSE	WS: 1 G:3 ESE	WS: 1 G:3 SSE	WS: 1 G:2 S	WS: 1 G:3 SSW	WS: 2 G:4 SSE	WS: 2 G:4 SSE	WS: 4 G:7 S	WS: 5 G:9 S	WS: 6 G:10 S	WS: 7 G:10 SSE	WS: 8 G:12 SE	WS: 8 G:13 SSE	WS: 9 G:14 SSE	WS: 9 G:14 SSE	WS: 10 G:15 SSE	WS: 10 G:16 SSE	WS: 10 G:16 SSE	WS: 7 G:14 SSE	WS: 6 G:13 SSE	WS: 5 G:11 SSE	WS: 5 G:10 SSE	WS: 4 G:9 S	
Houston Pilots J - Lynchburg Ferries	WS: 2 G:4 WSW	WS: 3 G:4 SE	WS: 8 G:12 SW	WS: 7 G:12 S	WS: 6 G:12 SSE	WS: 6 G:11 SSE	WS: 4 G:10 S	WS: 2 G:5 WSW	WS: 2 G:5 SSW	WS: 4 G:8 S	WS: 3 G:9 S	WS: 3 G:7 S	WS: 2 G:6 SSE	WS: 2 G:4 ESE	WS: 2 G:3 SSE	WS: 2 G:3 S	WS: 2 G:3 S	WS: 2 G:3 S	WS: 2 G:3 S	WS: 2 G:5 SSE	WS: 2 G:7 S	WS: 5 G:9 S	WS: 6 G:10 S	WS: 6 G:11 SSE	WS: 8 G:12 SE	WS: 8 G:13 SSE	WS: 9 G:14 SSE	WS: 10 G:15 SSE	WS: 10 G:16 SSE	WS: 10 G:17 SSE	WS: 8 G:14 SSE	WS: 7 G:13 SSE	WS: 6 G:12 SSE	WS: 6 G:10 SSE	WS: 5 G:9 S		
Houston Pilots I - Exxon 3	WS: 2 G:4 SW	WS: 4 G:5 SSE	WS: 4 G:8 S	WS: 8 G:14 S	WS: 5 G:10 SSE	WS: 6 G:11 SSE	WS: 5 G:10 SSE	WS: 2 G:5 SW	WS: 3 G:5 SSW	WS: 4 G:9 S	WS: 3 G:11 SSW	WS: 3 G:10 SSE	WS: 4 G:11 SSW	WS: 3 G:12 SSE	WS: 3 G:12 SSE	WS: 3 G:6 S	WS: 3 G:5 S	WS: 2 G:5 SSW	WS: 2 G:5 S	WS: 3 G:6 S	WS: 5 G:9 S	WS: 6 G:10 S	WS: 7 G:11 SSE	WS: 8 G:12 SSE	WS: 9 G:13 SSE	WS: 9 G:13 SSE	WS: 10 G:14 S	WS: 10 G:14 SSE	WS: 11 G:15 SSE	WS: 11 G:16 SSE	WS: 8 G:14 SSE	WS: 7 G:13 SSE	WS: 6 G:12 SSE	WS: 6 G:11 SSE	WS: 5 G:10 SSE		
Houston Pilots H - Morgans Point	WS: 4 G:5 SSW	WS: 8 G:8 SSE	WS: 2 G:7 SSE	WS: 8 G:13 S	WS: 6 G:10 SSE	WS: 6 G:10 SSE	WS: 7 G:10 SSE	WS: 5 G:7 SW	WS: 4 G:7 SSW	WS: 5 G:11 SSW	WS: 6 G:12 SSW	WS: 6 G:12 SSW	WS: 6 G:14 SSW	WS: 6 G:15 SSW	WS: 6 G:15 S	WS: 5 G:8 SSW	WS: 4 G:7 SSW	WS: 4 G:7 SSW	WS: 4 G:7 S	WS: 4 G:7 S	WS: 8 G:9 S	WS: 6 G:9 S	WS: 7 G:10 S	WS: 8 G:11 SSE	WS: 9 G:13 SSE	WS: 9 G:13 SSE	WS: 10 G:14 S	WS: 10 G:14 SSE	WS: 11 G:15 SSE	WS: 11 G:16 SSE	WS: 9 G:14 SSE	WS: 8 G:14 SSE	WS: 7 G:13 SSE	WS: 6 G:12 SSE	WS: 7 G:12 S		
Houston Pilots G - 75/76	WS: 6 G:7 S	WS: 7 G:10 S	WS: 4 G:7 SE	WS: 11 G:13 SSW	WS: 9 G:9 SSE	WS: 8 G:10 SSE	WS: 9 G:10 S	WS: 8 G:10 SSW	WS: 9 G:9 SSW	WS: 8 G:13 SSW	WS: 9 G:15 SSW	WS: 9 G:15 SSW	WS: 11 G:16 SSW	WS: 10 G:16 SSW	WS: 10 G:12 S	WS: 7 G:11 SSW	WS: 6 G:10 SSW	WS: 6 G:10 SSW	WS: 6 G:10 S	WS: 6 G:10 S	WS: 7 G:11 S	WS: 8 G:12 S	WS: 9 G:13 S	WS: 8 G:11 SSE	WS: 8 G:11 SSE	WS: 9 G:13 SSE	WS: 10 G:14 SSE	WS: 11 G:15 SSE	WS: 11 G:16 SSE	WS: 11 G:16 SSE	WS: 11 G:16 SSE	WS: 11 G:16 SSE	WS: 11 G:16 SSE	WS: 10 G:15 SSE	WS: 10 G:15 SSE	WS: 9 G:14 SSE	
Houston Pilots F - 63/64	WS: 7 G:8 SSW	WS: 6 G:10 S	WS: 6 G:8 SSE	WS: 11 G:13 WNW	WS: 5 G:8 SSE	WS: 8 G:9 SSE	WS: 10 G:11 S	WS: 8 G:13 SSW	WS: 10 G:12 SSW	WS: 8 G:14 SSW	WS: 11 G:15 SSW	WS: 12 G:16 SSW	WS: 12 G:16 SSW	WS: 12 G:17 SSW	WS: 12 G:13 SSW	WS: 9 G:13 SSW	WS: 8 G:12 SSW	WS: 8 G:11 SSW	WS: 8 G:11 SSW	WS: 8 G:11 S	WS: 7 G:10 S	WS: 7 G:11 S	WS: 8 G:12 S	WS: 9 G:13 S	WS: 8 G:11 SSE	WS: 8 G:11 SSE	WS: 9 G:13 SSE	WS: 10 G:14 SSE	WS: 11 G:15 SSE	WS: 12 G:16 SSE	WS: 12 G:16 SSE	WS: 12 G:16 SSE	WS: 12 G:16 SSE	WS: 12 G:16 SSE	WS: 11 G:15 SSE	WS: 11 G:15 SSE	WS: 10 G:14 SSE
Houston Pilots E - 51/52	WS: 6 G:8 SSW	WS: 8 G:8 SSW	WS: 8 G:8 S	WS: 6 G:7 SW	WS: 6 G:9 SE	WS: 10 G:11 S	WS: 11 G:13 SSW	WS: 11 G:14 SSW	WS: 11 G:13 SSW	WS: 12 G:15 S	WS: 12 G:15 S	WS: 13 G:16 S	WS: 13 G:16 S	WS: 13 G:18 S	WS: 14 G:14 S	WS: 10 G:13 SSW	WS: 9 G:12 SSW	WS: 9 G:12 SSW	WS: 7 G:12 SSW	WS: 7 G:11 SSW	WS: 8 G:11 SSW	WS: 8 G:11 S	WS: 8 G:11 S	WS: 9 G:12 SSE	WS: 10 G:13 SSE	WS: 10 G:13 SSE	WS: 11 G:14 S	WS: 12 G:15 SSE	WS: 12 G:16 SSE	WS: 12 G:17 SSE	WS: 12 G:17 SSE	WS: 12 G:17 SSE	WS: 12 G:17 SSE	WS: 12 G:17 SSE	WS: 12 G:17 SSE	WS: 12 G:17 SSE	WS: 11 G:16 SSE
Houston Pilots D - 37/38	WS: 6 G:10 SSW	WS: 8 G:8 SSW	WS: 6 G:7 SSW	WS: 4 G:6 SSW	WS: 8 G:12 SE	WS: 11 G:14 S	WS: 11 G:13 SSW	WS: 12 G:14 S	WS: 11 G:14 S	WS: 12 G:15 S	WS: 12 G:15 S	WS: 13 G:16 S	WS: 13 G:17 S	WS: 15 G:15 S	WS: 15 G:11 S	WS: 10 G:14 S	WS: 10 G:13 SSW	WS: 9 G:13 SSW	WS: 8 G:12 SSW	WS: 8 G:12 SSW	WS: 8 G:12 SSW	WS: 9 G:12 SSW	WS: 9 G:12 S	WS: 9 G:12 S	WS: 9 G:13 SSE	WS: 10 G:13 SSE	WS: 11 G:14 SSE	WS: 12 G:15 SSE	WS: 12 G:16 SSE	WS: 12 G:17 SSE	WS: 13 G:17 SSE	WS: 12 G:17 SSE	WS: 12 G:17 SSE	WS: 12 G:17 SSE	WS: 12 G:17 SSE	WS: 12 G:17 SSE	WS: 12 G:17 SSE
Houston Pilots C - 25/26	WS: 6 G:11 SSW	WS: 10 G:12 SSW	WS: 6 G:8 SW	WS: 4 G:7 SE	WS: 11 G:11 S	WS: 11 G:13 SSW	WS: 10 G:13 SSW	WS: 10 G:14 S	WS: 11 G:15 S	WS: 10 G:16 S	WS: 11 G:16 S	WS: 12 G:17 S	WS: 12 G:17 S	WS: 13 G:19 S	WS: 13 G:15 S	WS: 10 G:14 S	WS: 10 G:13 SSW	WS: 9 G:12 SSW	WS: 9 G:12 SSW	WS: 9 G:12 SSW	WS: 9 G:12 S	WS: 9 G:13 S	WS: 10 G:13 S	WS: 10 G:13 S	WS: 10 G:13 SSE	WS: 10 G:13 SSE	WS: 11 G:14 SSE	WS: 11 G:14 SSE	WS: 12 G:15 SSE	WS: 12 G:16 SSE	WS: 12 G:17 SSE	WS: 12 G:17 SSE	WS: 12 G:17 SSE	WS: 12 G:17 SSE	WS: 12 G:17 SSE	WS: 12 G:17 SSE	WS: 12 G:17 SSE
Houston Pilots B - 11/12	WS: 7 G:11 SSW	WS: 13 G:13 SSW	WS: 8 G:10 SW	WS: 6 G:9 SW	WS: 7 G:11 SSE	WS: 12 G:16 S	WS: 13 G:13 SSW	WS: 9 G:12 SSW	WS: 11 G:14 S	WS: 11 G:15 S	WS: 12 G:16 S	WS: 13 G:17 S	WS: 13 G:17 S	WS: 14 G:19 S	WS: 12 G:15 S	WS: 11 G:14 S	WS: 10 G:13 SSW	WS: 10 G:13 SSW	WS: 10 G:13 SSW	WS: 9 G:13 S	WS: 9 G:13 S	WS: 9 G:13 S	WS: 9 G:13 S	WS: 9 G:13 S	WS: 10 G:14 SSE	WS: 10 G:14 SSE	WS: 11 G:15 SSE	WS: 11 G:15 SSE	WS: 12 G:16 SSE	WS: 12 G:17 SSE	WS: 13 G:17 SSE	WS: 13 G:17 SSE	WS: 12 G:17 SSE	WS: 12 G:17 SSE	WS: 12 G:17 SSE	WS: 12 G:17 SSE	WS: 12 G:17 SSE
Houston Pilots A - 1 & 2 Bravo	WS: 10 G:11 SSW	WS: 13 G:14 SSW	WS: 12 G:14 SW	WS: 10 G:11 SW	WS: 12 G:16 S	WS: 13 G:13 S	WS: 10 G:11 S	WS: 13 G:14 S	WS: 13 G:15 S	WS: 16 G:17 S	WS: 16 G:17 S	WS: 17 G:17 S	WS: 17 G:17 S	WS: 18 G:19 S	WS: 13 G:15 S	WS: 12 G:14 S	WS: 11 G:13 S	WS: 11 G:13 S	WS: 11 G:13 S	WS: 11 G:13 S	WS: 11 G:13 S	WS: 10 G:13 S	WS: 10 G:13 S	WS: 10 G:13 S	WS: 10 G:13 S	WS: 11 G:14 S	WS: 11 G:14 S	WS: 12 G:15 SSE	WS: 12 G:16 SSE	WS: 13 G:17 SSE	WS: 14 G:17 SSE	WS: 14 G:18 S	WS: 13 G:17 S	WS: 13 G:17 S	WS: 14 G:17 S	WS: 14 G:17 S	

See slides below for official thoughts on winds.

Houston Pilots: Fri. 8/19/2022



Forecast Discussion

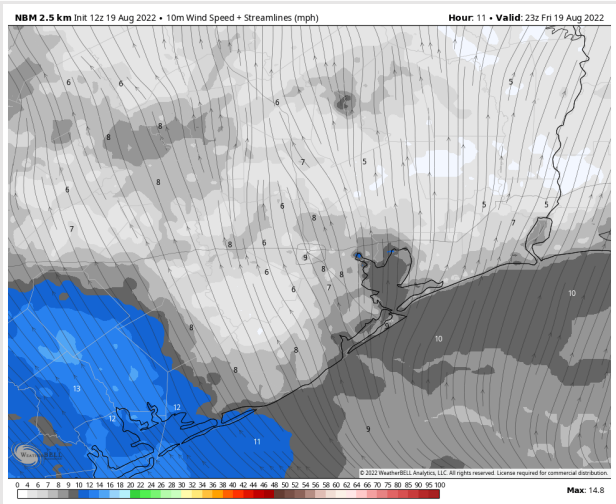
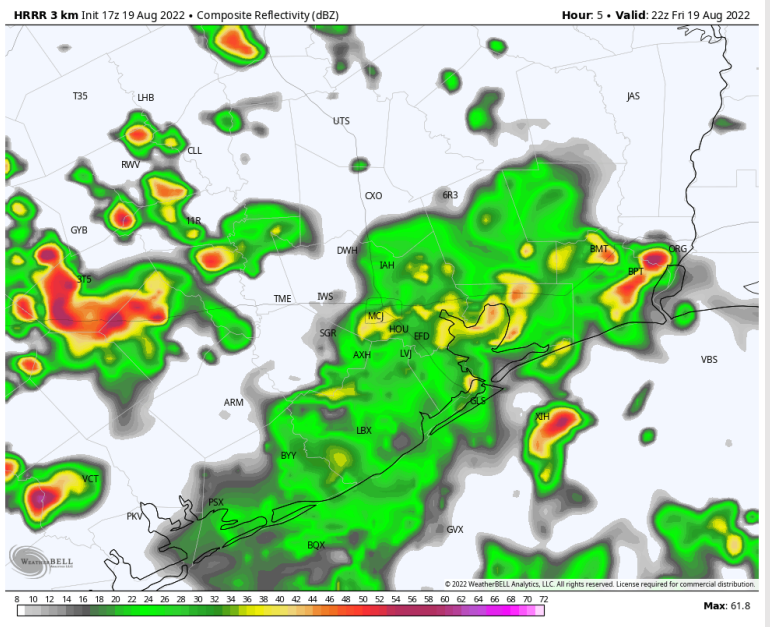
Precip: Anticipating 60-70% widespread showers/storms until 6PM. Between 6-9PM coverage will decrease to 20-30%. Expecting dry conditions beyond 9PM. Locally heavy downpours, lightning and gusty winds possible under any of these stronger storms.

Wind: Sustained winds will be 5-10 MPH out of the WSW until ~6PM, then shift from the SSE into the afternoon. Gusts of 20-30 MPH possible under any of these stronger storms.

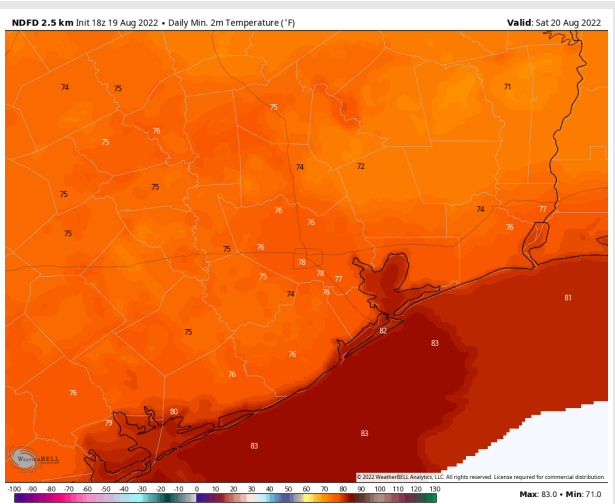
Temps: Low temps Saturday morning in the low 80s F near the boarding station and in the upper 70s F at all other stations.

Visibility: Not anticipating fog concerns at this time.

Precip Forecast: 5 PM CT



Wind Speed
6 PM CT



Low Temps
SAT AM

Houston Pilots: Sat. 8/20/2022

Forecast Discussion

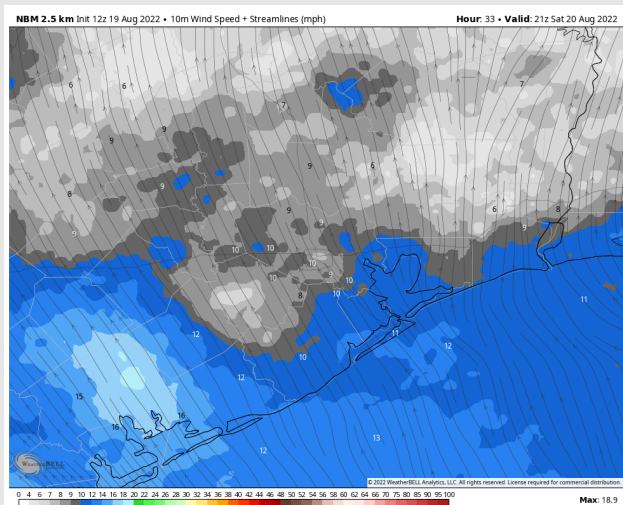
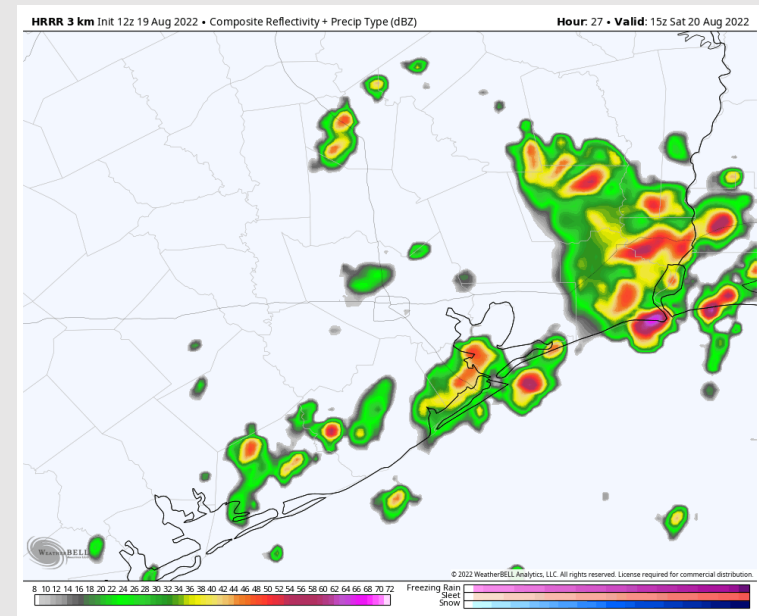
Precip: Chances for scattered showers/storms of around 30% begin around 4AM Saturday with more widespread chances increasing to 50-60% into the late afternoon until 6PM. From 6-10PM, chances back down to 30%. Anticipating drier conditions after 10PM. Lightning, locally heavy downpours and wind gusts possible under any stronger cell.

Wind: Sustained winds out of the south at 3-8 MPH in the AM north of Morgan's Point. Areas south will see 8-13 MPH in the AM. After 1PM, winds at all stations 8-13 MPH. Gusts up to 30 MPH possible under stronger storms.

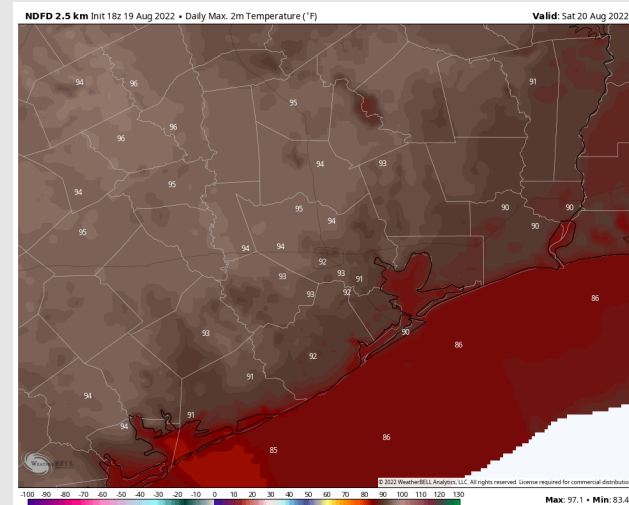
Temps: High temps Saturday in the upper 80s F near the boarding station and in the low to mid 90s F at all other stations.

Visibility: Not anticipating fog concerns at this time.

Precip Forecast: 10 AM CT



Wind Speed
4 PM CT



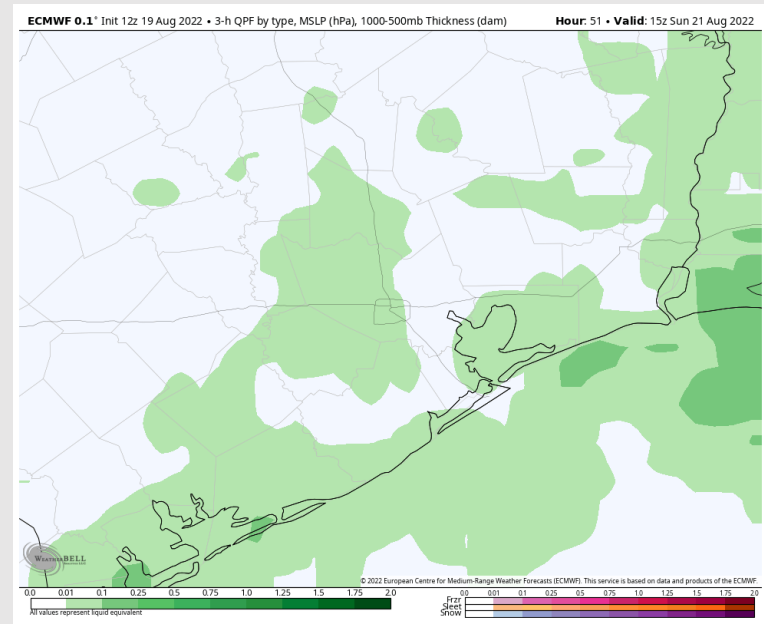
High Temps
SAT

Houston Pilots: Sun. 8/21/2022

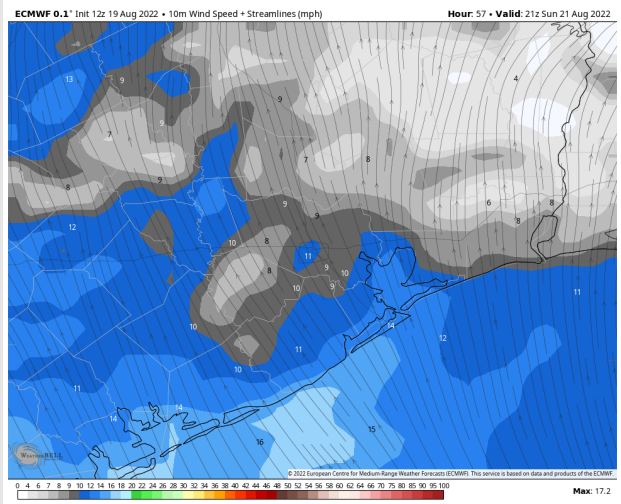
Forecast Discussion

- Precip:** Expecting scattered chances for showers/storms throughout the AM with chances increasing for more widespread coverage between 2-9PM.
- Wind:** Sustained winds out of the SSE 10-15 MPH in the early AM. After 6AM, winds calm 5-10MPH. Around 2PM winds will increase to 8-13 MPH still out of the SSE. Winds gusts of 20 MPH possible under stronger storms.
- Temps:** High temps Sunday in the upper 80s F near the boarding station and in the low 90s F for all other stations.
- Visibility:** Not anticipating fog concerns at this time.

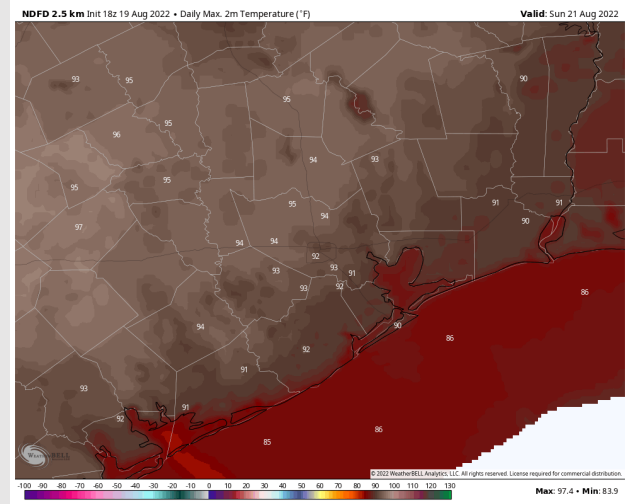
Precip Forecast: 10 AM CT



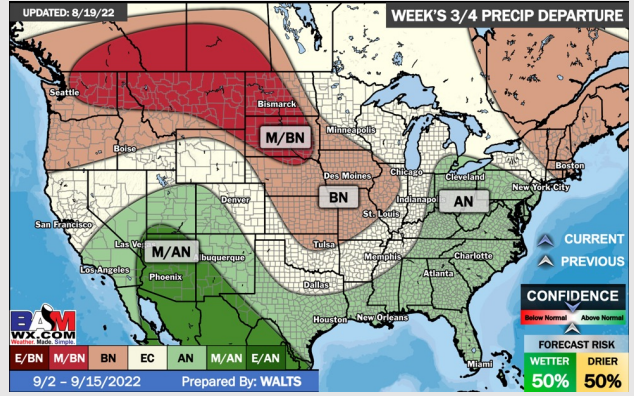
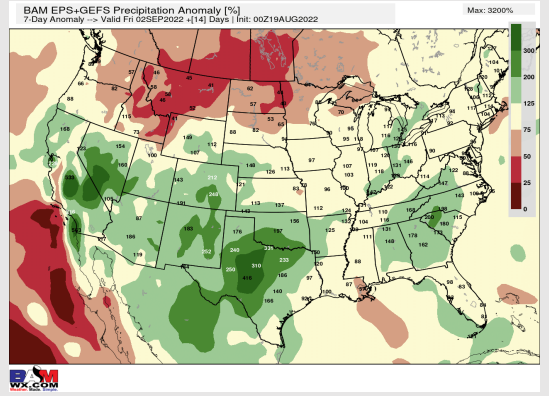
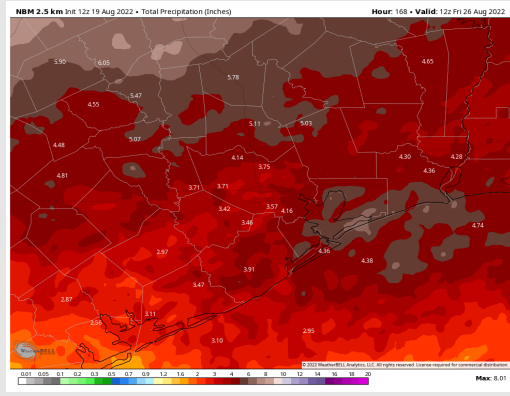
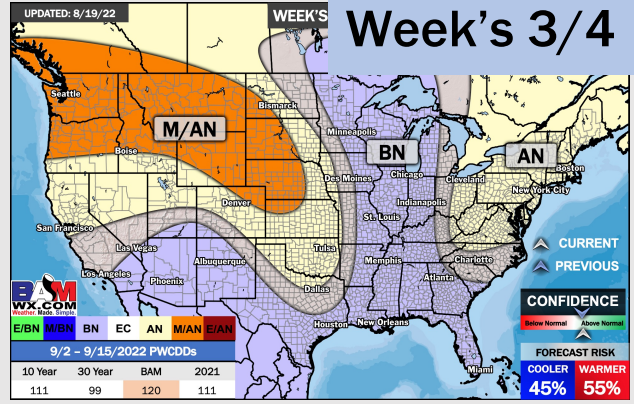
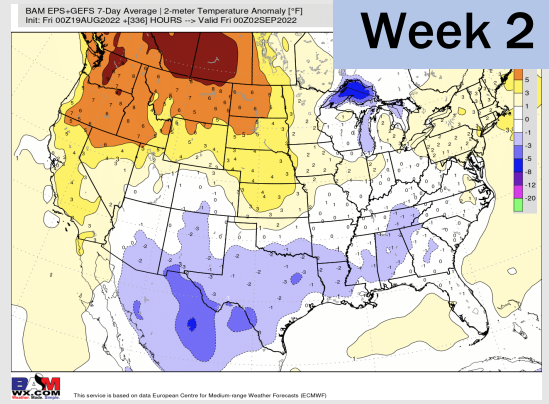
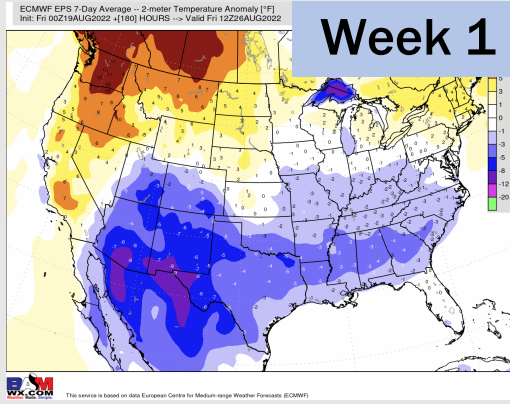
Wind Speed
4 PM CT



High Temps
SUN



Houston Pilots: 8/19/22



- Temperatures expected to be below normal this week. Increased precip chances as storms move through the weekend.
- Week 2 likely features near normal temperatures and near normal precipitation.
- The weeks 3/4 timeframe into mid September looks to feature below normal temperatures and above normal risks for precip.