

Houston Pilots Forecast Package

Houston Pilots

Updated: 3:00 PM CT

Thursday, August 18, 2022

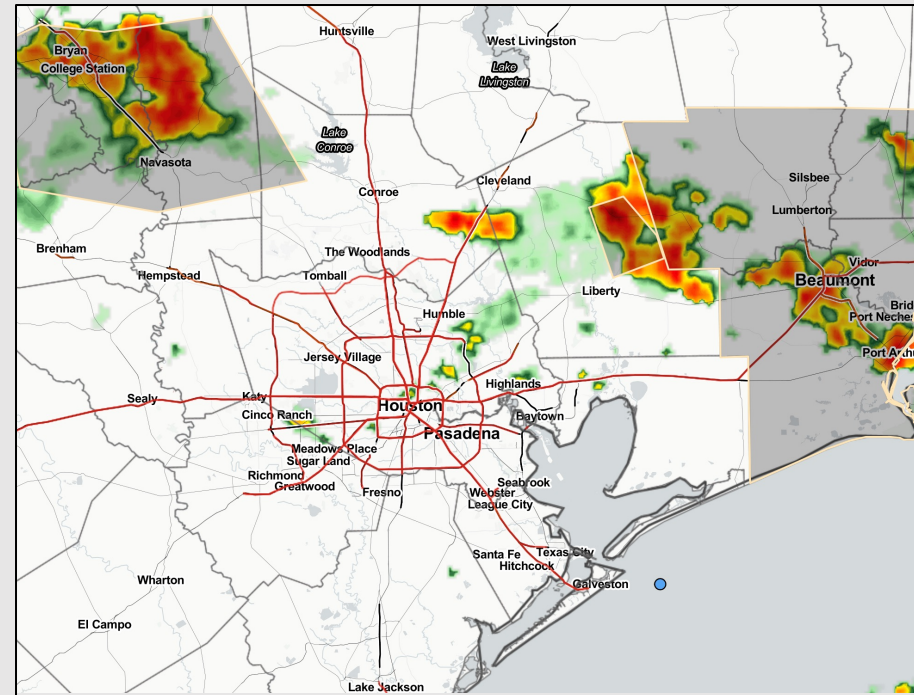
Forecaster: Alyssa McClung

Weather Headlines

➤ Eyeing a few opportunities for storms over the next 3 days, especially this evening. Strong to severe wind gusts possible this PM before activity becomes more hit and miss into the weekend.

➤ Tropical threats will continue to remain rather low. There is a weak disturbance in the SW Caribbean that could move NW into potentially far S TX, but as of now this is not a concern.

➤ Biggest wind risks will be associated with storms moving through this evening and tomorrow.

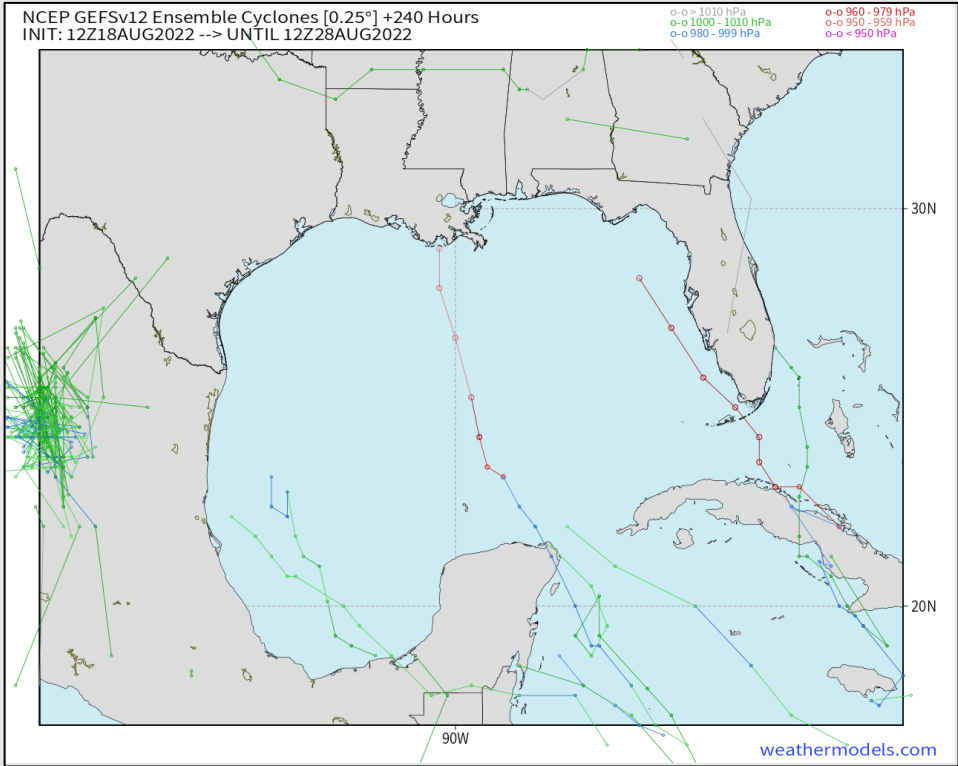


Radar/ NWS Alerts: 3:00 PM CT



As always, please do not hesitate to reach out to us with any forecast questions via the chat option on the Weather Porthole or our on-call number, **(317)-560-8122** press 1 for forecast questions.

Various model tracks next 10 days



No tropical threat for Houston expected over the next 7-10 days. A tropical wave in the southwestern Caribbean could slowly become more organized over the next week. Will continue to monitor, but not overly concerned with future impacts at this time.

Confidence

Above Normal Below Normal

Houston Pilots: Thu. 8/18/2022



Forecast Discussion

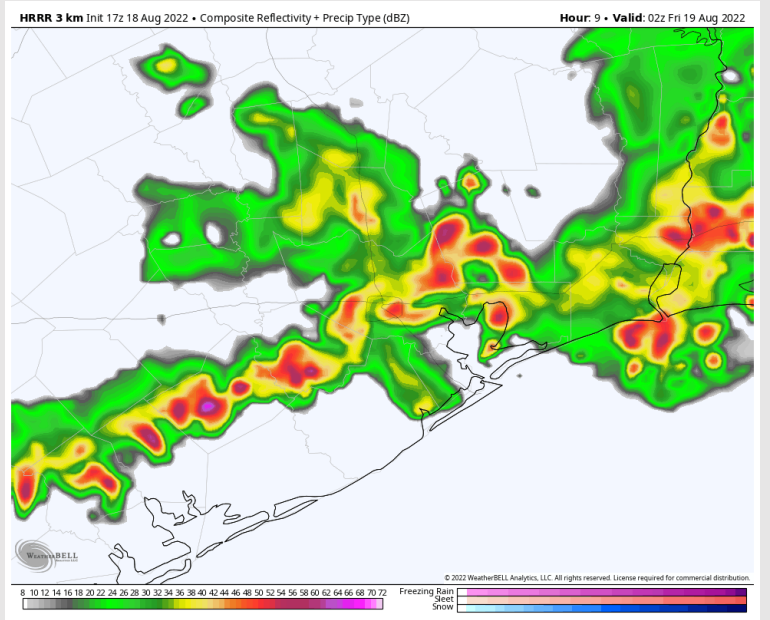
Precip: 60-70% coverage for showers/thunderstorms with better coverage for stronger storms between 8-10PM. Showers/storm chances will begin to decrease after 10PM and continue into the overnight/early Friday AM. Strong wind gusts, lightning, locally heavy downpours and hail are all possible under a stronger storm.

Wind: Sustained winds out of the SSW 13-18 MPH. Sustained winds pick up between ~5-9PM to 15-20MPH, then decrease 13-18 MPH for the rest of the evening into the overnight. Wind gusts under stronger storms can reach 40-60+ MPH.

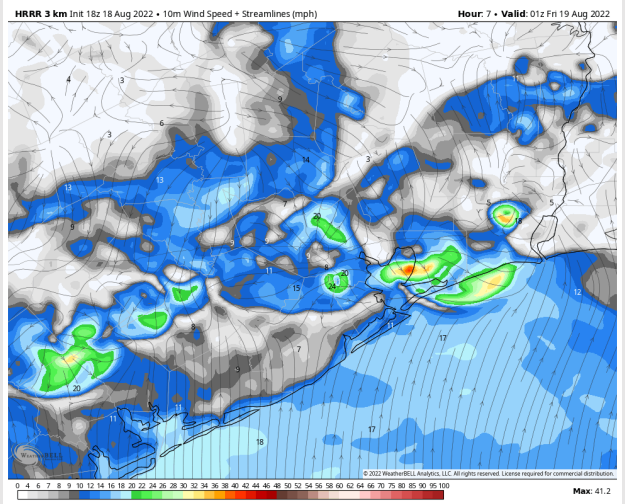
Temps: Low temps tomorrow AM in the mid to upper 70s F for most stations with temps near 80 F near the boarding station.

Visibility: Not anticipating fog concerns at this time. Anticipate reduced visibility under stronger storms.

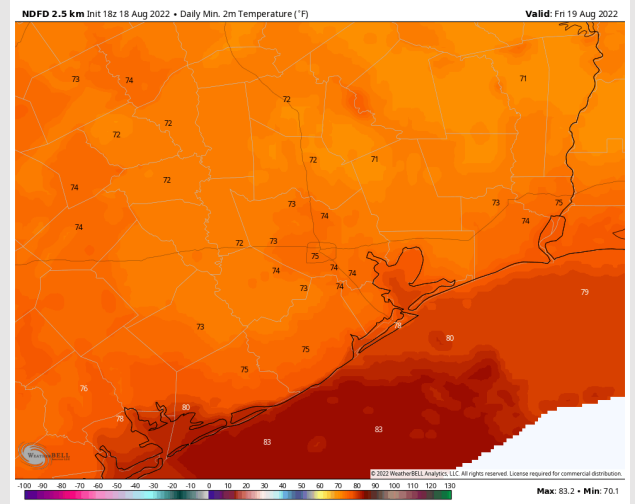
Precip Forecast: 9 PM CT



Wind Speed
8 PM CT



Low Temps
FRI AM



Houston Pilots: Fri. 8/19/2022

Forecast Discussion

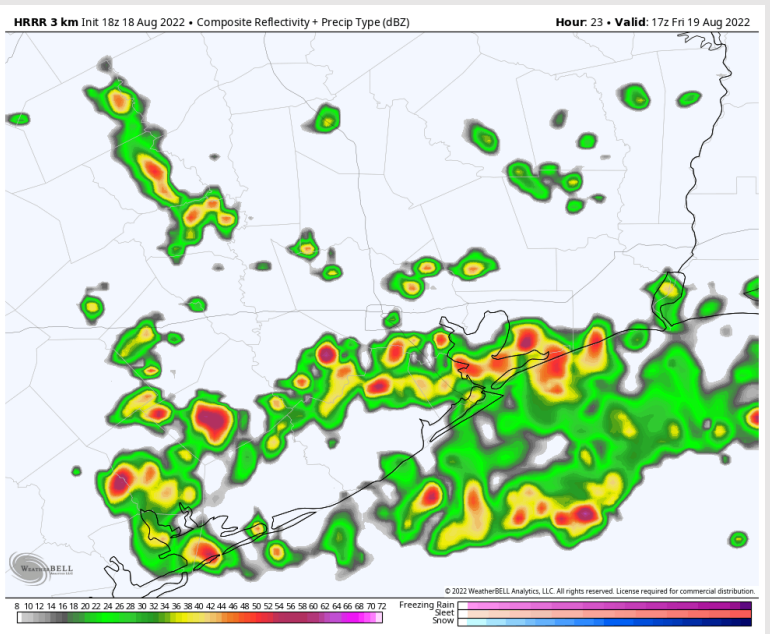
Precip: Anticipating a 40% chance of a few lingering showers/storms between 7-10AM. Coverage increases to 60-70% after 10AM and lasts until 7PM. Locally heavy downpours, lightning and gusty winds possible under any of these stronger storms.

Wind: Sustained winds will be 5-10 MPH out of the WSW until ~6PM, then shift from the SSE into the afternoon. Winds north of Morgan's Point 3-8 MPH in the AM. Gusts of 30-40 MPH possible under any of these stronger storms.

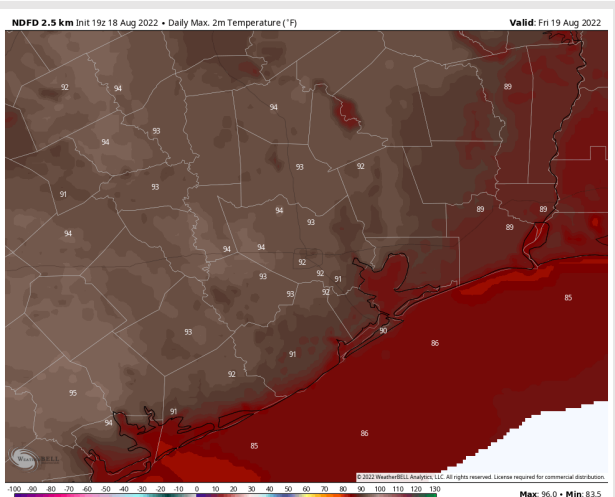
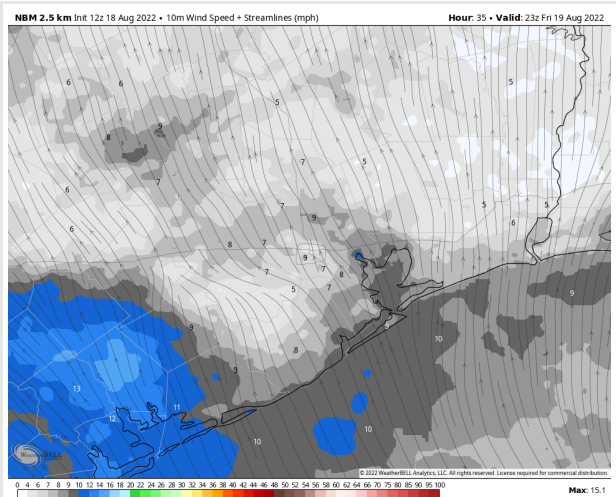
Temps: High temps in the upper 80s F near the boarding station and lower 90s F for all other stations.

Visibility: Not anticipating fog concerns at this time.

Precip Forecast: 12 PM CT



Wind Speed 6 PM CT



High Temps
FRI

Houston Pilots: Sat. 8/20/2022

Forecast Discussion

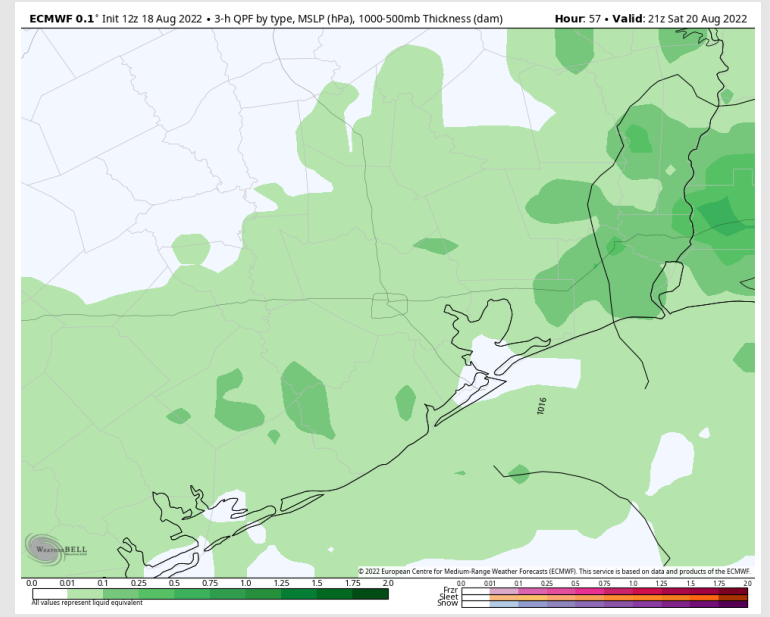
Precip: Chances for scattered showers/storms begin around 4AM Saturday with more widespread chances increasing further into the late afternoon until 10PM. After 10PM expecting drier conditions. Lightning, locally heavy downpours and wind gusts possible under any stronger cell.

Wind: Sustained winds out of the SSE at 3-8 MPH in the AM. After 1PM, winds increase 8-13 MPH. Gusts up to 25 MPH possible under stronger storms.

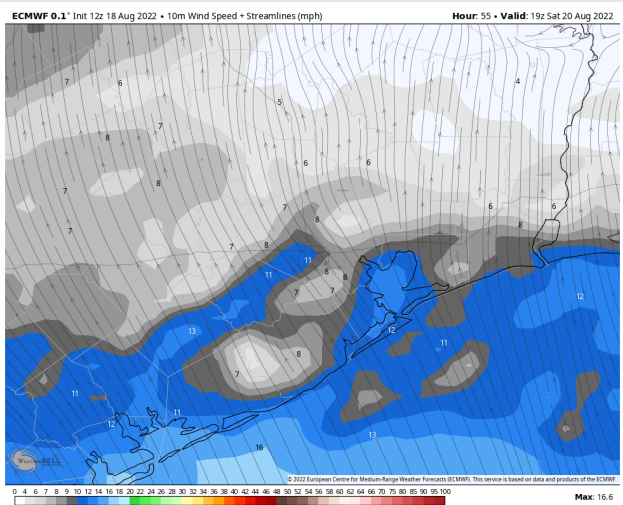
Temps: High temps Saturday in the upper 80s F near the boarding station and in the low 90s F at all other stations.

Visibility: Not anticipating fog concerns at this time.

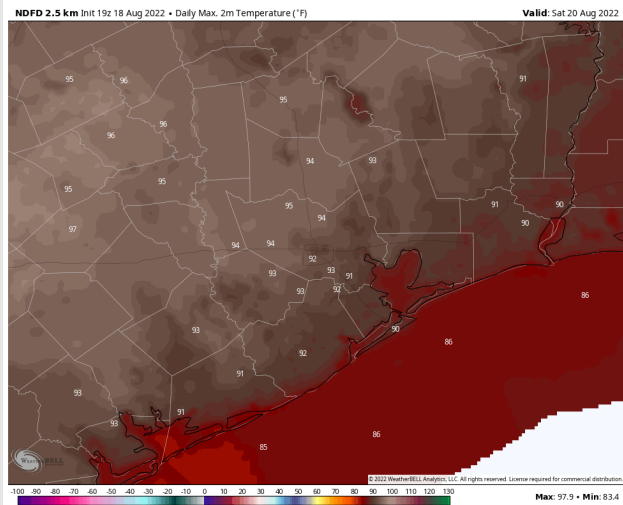
Precip Forecast: 4 PM CT



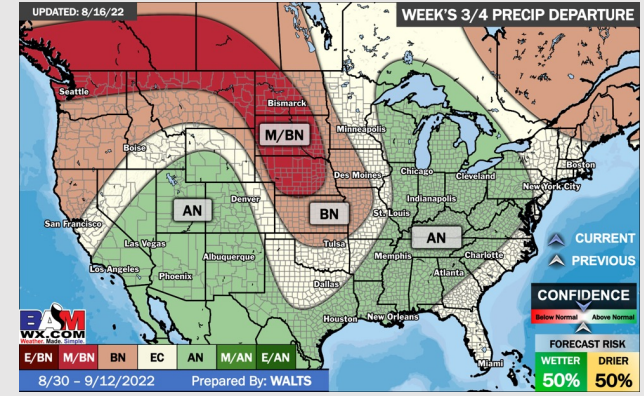
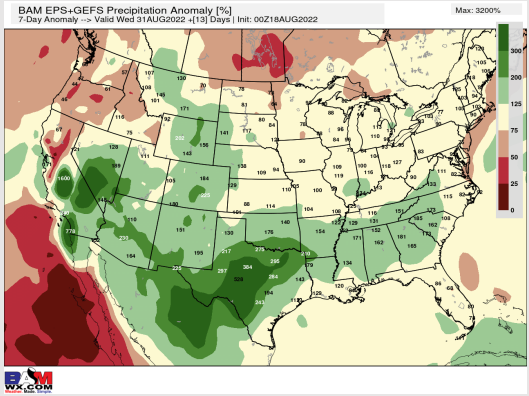
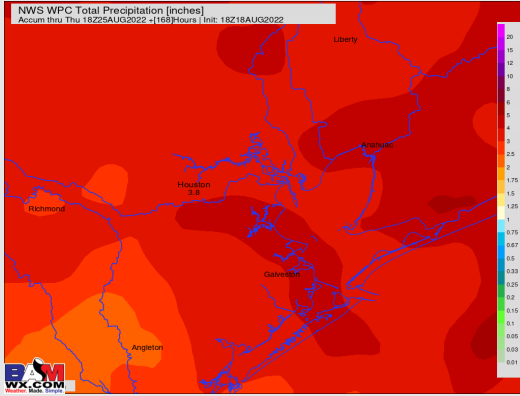
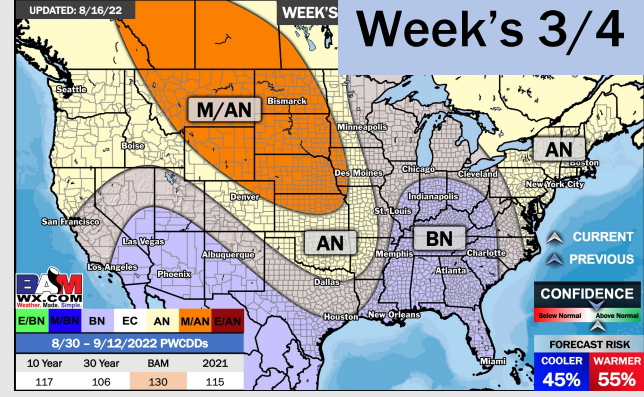
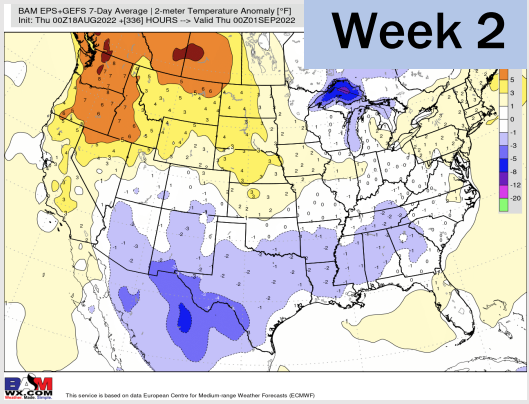
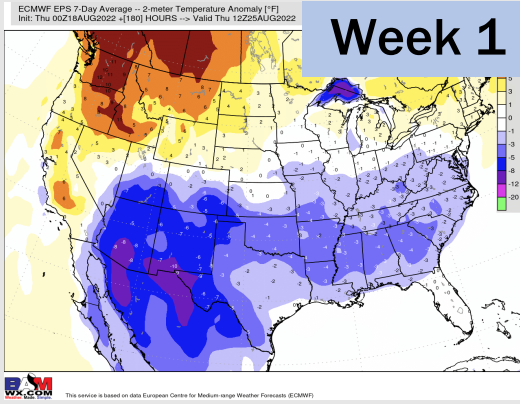
Wind Speed
2 PM CT



High Temps
SAT



Houston Pilots: 8/18/22



- Temperatures expected to be around normal this week. Increased precip chances as storms move in tonight and through the weekend.
- Week 2 likely features near normal temperatures and near normal precipitation.
- The weeks 3/4 timeframe into mid September looks to feature below normal temperatures and above normal risks for precip.