

Houston Pilots Forecast Package

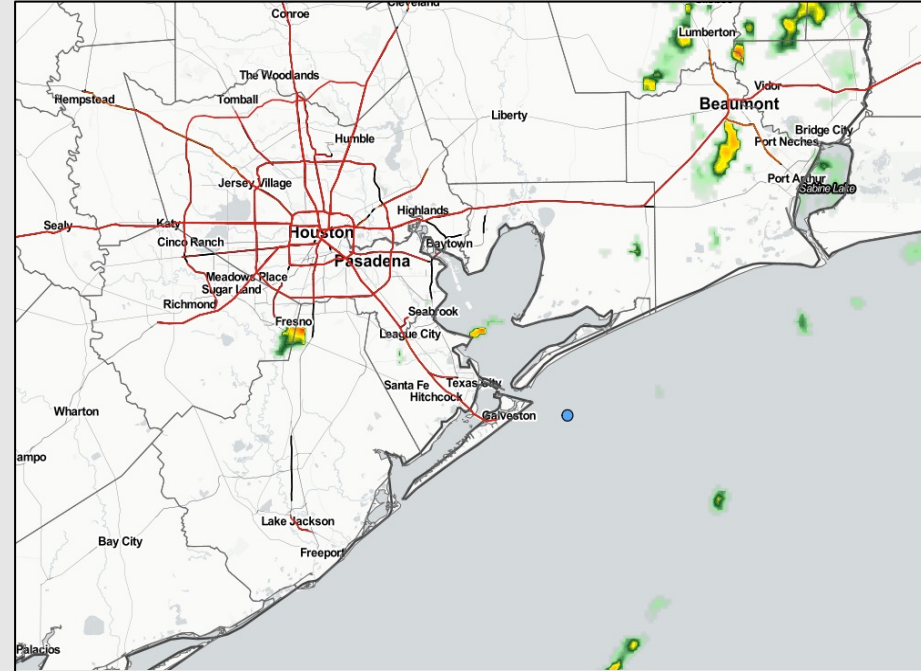
Houston Pilots

Updated: 1:00 PM CT
Tuesday, August 2, 2022

Forecaster: Vince Bryan

Weather Headlines

- Isolated, hit and miss showers and thunderstorms will continue to be the theme moving forward. Chances will continue to be 20-30%, but ~Friday/Saturday look to have the best chances moving forward.
- Flow will stay predominately out of the South/ Southwest the next several days.
- Not favoring any tropical threats the next 7 days.

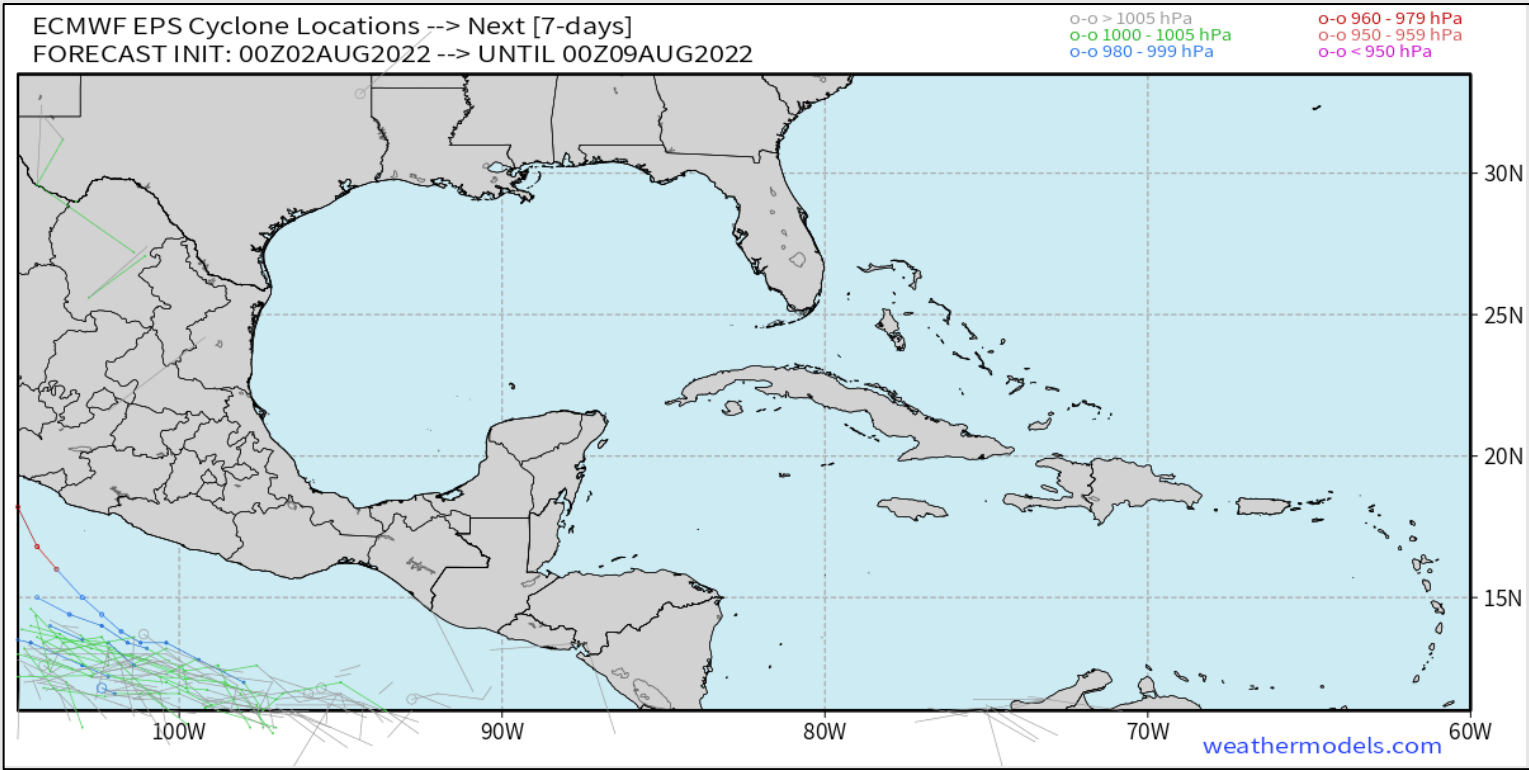


Radar/ NWS Alerts: 1:00 PM CT



As always, please do not hesitate to reach out to us with any forecast questions via the chat option on the Weather Porthole or our on-call number, **(317)-560-8122** press 1 for forecast questions.

Various model tracks next 7 days



Not favoring any impactful tropical threats the next 7 days.

Confidence

Above Normal Below Normal

Houston Pilots Wind Report



Confidence



Example

Sustained wind 13 MPH
Gusts 18 MPH
Wind from the N

WS: 13
G:18
N

Time	08-02-2022 Tue 11am	08-02-2022 Tue 12pm	08-02-2022 Tue 1pm	08-02-2022 Tue 2pm	08-02-2022 Tue 3pm	08-02-2022 Tue 4pm	08-02-2022 Tue 5pm	08-02-2022 Tue 6pm	08-02-2022 Tue 7pm	08-02-2022 Tue 8pm	08-02-2022 Tue 9pm	08-02-2022 Tue 10pm	08-02-2022 Tue 11pm	08-03-2022 Wed 12am	08-03-2022 Wed 1am	08-03-2022 Wed 2am	08-03-2022 Wed 3am	08-03-2022 Wed 4am	08-03-2022 Wed 5am	08-03-2022 Wed 6am	08-03-2022 Wed 7am	08-03-2022 Wed 8am	08-03-2022 Wed 9am	08-03-2022 Wed 10am	08-03-2022 Wed 11am	08-03-2022 Wed 12pm	08-03-2022 Wed 1pm	08-03-2022 Wed 2pm	08-03-2022 Wed 3pm	08-03-2022 Wed 4pm	08-03-2022 Wed 5pm	08-03-2022 Wed 6pm	08-03-2022 Wed 7pm	08-03-2022 Wed 8pm	08-03-2022 Wed 9pm	08-03-2022 Wed 10pm	
Houston Pilots N - 610 Bridge	WS: 7 G:10 SW	WS: 6 G:8 SW	WS: 6 G:9 SSW	WS: 8 G:10 S	WS: 9 G:12 S	WS: 13 G:17 S	WS: 13 G:18 S	WS: 13 G:18 S	WS: 13 G:20 S	WS: 12 G:19 S	WS: 10 G:20 S	WS: 9 G:21 S	WS: 8 G:21 S	WS: 7 G:21 S	WS: 6 G:18 S	WS: 6 G:11 S	WS: 5 G:11 S	WS: 5 G:10 SSW	WS: 4 G:9 SSW	WS: 4 G:8 SSW	WS: 4 G:8 S	WS: 4 G:11 SSW	WS: 5 G:13 SSW	WS: 9 G:14 SSW	WS: 8 G:14 SSW	WS: 8 G:14 S	WS: 9 G:15 S	WS: 10 G:17 S	WS: 10 G:19 S	WS: 11 G:18 S	WS: 12 G:20 S	WS: 13 G:20 S	WS: 13 G:19 S	WS: 12 G:19 S	WS: 10 G:18 S	WS: 9 G:16 S	
Houston Pilots M - Kinder 1	WS: 7 G:10 SW	WS: 6 G:8 SSW	WS: 6 G:9 S	WS: 8 G:10 S	WS: 10 G:13 SSE	WS: 13 G:17 SSE	WS: 14 G:19 S	WS: 13 G:19 S	WS: 13 G:20 S	WS: 12 G:20 S	WS: 10 G:20 S	WS: 9 G:21 S	WS: 8 G:21 S	WS: 7 G:21 S	WS: 6 G:18 S	WS: 6 G:11 S	WS: 5 G:11 S	WS: 5 G:9 SSW	WS: 4 G:8 SSW	WS: 4 G:8 SSW	WS: 4 G:7 SSW	WS: 5 G:11 SSW	WS: 9 G:13 SSW	WS: 9 G:14 SSW	WS: 9 G:14 SSW	WS: 9 G:14 S	WS: 9 G:15 S	WS: 10 G:17 S	WS: 11 G:19 S	WS: 12 G:19 S	WS: 13 G:20 S	WS: 13 G:20 S	WS: 13 G:19 S	WS: 12 G:19 S	WS: 10 G:18 S	WS: 9 G:16 S	
Houston Pilots L - Greens Bayou	WS: 7 G:10 SW	WS: 6 G:9 SSW	WS: 6 G:8 S	WS: 8 G:10 S	WS: 11 G:14 SSE	WS: 13 G:17 SSE	WS: 14 G:19 SSE	WS: 13 G:19 SSE	WS: 13 G:20 SSE	WS: 12 G:20 S	WS: 10 G:20 S	WS: 9 G:21 S	WS: 7 G:21 S	WS: 6 G:21 S	WS: 5 G:18 S	WS: 6 G:11 S	WS: 4 G:11 S	WS: 4 G:9 SSW	WS: 4 G:8 SSW	WS: 4 G:7 SSW	WS: 4 G:7 SSW	WS: 5 G:11 SSW	WS: 9 G:13 SSW	WS: 9 G:14 SSW	WS: 9 G:13 SSW	WS: 9 G:13 S	WS: 9 G:15 S	WS: 11 G:16 S	WS: 12 G:19 S	WS: 13 G:20 S	WS: 13 G:20 S	WS: 14 G:20 S	WS: 14 G:19 S	WS: 12 G:19 S	WS: 10 G:18 S	WS: 9 G:16 S	
Houston Pilots K - Shell Crude	WS: 7 G:10 SW	WS: 6 G:9 S	WS: 7 G:9 S	WS: 9 G:11 SSE	WS: 12 G:16 SSE	WS: 14 G:18 SSE	WS: 14 G:19 SSE	WS: 13 G:19 SSE	WS: 13 G:20 SSE	WS: 12 G:20 S	WS: 10 G:20 S	WS: 9 G:21 S	WS: 7 G:20 S	WS: 6 G:20 S	WS: 5 G:18 S	WS: 6 G:12 S	WS: 5 G:11 S	WS: 4 G:10 S	WS: 4 G:9 S	WS: 4 G:8 S	WS: 4 G:7 S	WS: 5 G:11 S	WS: 9 G:13 S	WS: 10 G:13 S	WS: 9 G:13 S	WS: 9 G:13 S	WS: 10 G:15 S	WS: 11 G:17 S	WS: 12 G:19 S	WS: 13 G:20 S	WS: 14 G:20 S	WS: 14 G:20 S	WS: 14 G:19 S	WS: 12 G:19 S	WS: 10 G:18 S	WS: 9 G:16 S	
Houston Pilots J - Lynchburg Ferries	WS: 7 G:10 SW	WS: 7 G:9 SSW	WS: 8 G:11 SSE	WS: 10 G:13 SSE	WS: 13 G:17 SSE	WS: 14 G:19 SSE	WS: 14 G:19 SSE	WS: 13 G:21 S	WS: 12 G:21 S	WS: 9 G:22 S	WS: 9 G:20 S	WS: 7 G:20 S	WS: 6 G:20 S	WS: 5 G:18 S	WS: 7 G:13 S	WS: 6 G:12 S	WS: 5 G:11 S	WS: 5 G:9 S	WS: 4 G:8 S	WS: 4 G:8 S	WS: 4 G:8 S	WS: 5 G:11 S	WS: 9 G:13 S	WS: 9 G:14 S	WS: 9 G:13 S	WS: 9 G:13 S	WS: 11 G:15 S	WS: 12 G:17 S	WS: 13 G:19 S	WS: 15 G:20 S	WS: 15 G:21 S	WS: 15 G:21 S	WS: 15 G:20 S	WS: 13 G:19 S	WS: 11 G:18 S	WS: 10 G:16 S	
Houston Pilots I - Exxon 3	WS: 7 G:10 SSW	WS: 8 G:10 SSW	WS: 12 G:15 SSE	WS: 12 G:16 SSE	WS: 14 G:19 SSE	WS: 15 G:21 SSE	WS: 15 G:20 SSE	WS: 14 G:20 SSE	WS: 14 G:21 S	WS: 12 G:21 S	WS: 10 G:20 S	WS: 10 G:22 S	WS: 8 G:20 S	WS: 7 G:20 S	WS: 6 G:19 S	WS: 7 G:14 S	WS: 7 G:13 S	WS: 6 G:12 S	WS: 5 G:12 S	WS: 5 G:10 S	WS: 5 G:9 S	WS: 5 G:9 S	WS: 6 G:11 S	WS: 9 G:13 S	WS: 10 G:14 S	WS: 10 G:14 S	WS: 10 G:14 S	WS: 12 G:16 S	WS: 13 G:18 S	WS: 14 G:20 S	WS: 15 G:20 S	WS: 15 G:21 S	WS: 15 G:21 S	WS: 15 G:20 S	WS: 13 G:19 S	WS: 11 G:18 S	WS: 10 G:16 S
Houston Pilots H - Morgans Point	WS: 7 G:10 SSW	WS: 12 G:15 S	WS: 15 G:17 SSE	WS: 14 G:17 SSE	WS: 16 G:20 SSE	WS: 17 G:21 SSE	WS: 16 G:21 S	WS: 16 G:22 S	WS: 14 G:21 S	WS: 13 G:20 S	WS: 13 G:22 S	WS: 12 G:21 S	WS: 10 G:20 S	WS: 9 G:20 S	WS: 9 G:16 S	WS: 9 G:15 S	WS: 8 G:15 S	WS: 7 G:14 S	WS: 7 G:12 S	WS: 7 G:12 S	WS: 7 G:13 S	WS: 7 G:13 S	WS: 9 G:15 S	WS: 9 G:15 S	WS: 10 G:14 S	WS: 10 G:14 S	WS: 11 G:14 S	WS: 13 G:16 S	WS: 14 G:18 S	WS: 15 G:20 S	WS: 16 G:20 S	WS: 16 G:20 S	WS: 15 G:19 S	WS: 14 G:19 S	WS: 12 G:18 S	WS: 11 G:17 S	
Houston Pilots G - 75/76	WS: 7 G:10 SSW	WS: 13 G:14 SSE	WS: 17 G:18 SSE	WS: 18 G:20 SSE	WS: 19 G:21 SSE	WS: 19 G:21 S	WS: 18 G:21 S	WS: 19 G:23 S	WS: 18 G:23 S	WS: 18 G:20 S	WS: 16 G:20 S	WS: 16 G:22 S	WS: 15 G:21 S	WS: 15 G:21 S	WS: 14 G:20 S	WS: 12 G:19 S	WS: 11 G:17 S	WS: 10 G:16 S	WS: 9 G:15 S	WS: 9 G:15 S	WS: 9 G:15 S	WS: 10 G:16 S	WS: 10 G:16 S	WS: 10 G:14 S	WS: 10 G:14 S	WS: 11 G:15 S	WS: 13 G:16 S	WS: 14 G:18 S	WS: 15 G:19 S	WS: 16 G:20 S	WS: 16 G:20 S	WS: 16 G:20 S	WS: 15 G:19 S	WS: 14 G:19 S	WS: 13 G:18 S	WS: 12 G:16 S	
Houston Pilots F - 63/64	WS: 10 G:11 SSW	WS: 14 G:15 SSE	WS: 18 G:19 SSE	WS: 19 G:21 SSE	WS: 19 G:21 S	WS: 19 G:21 S	WS: 19 G:23 S	WS: 20 G:23 S	WS: 18 G:22 S	WS: 17 G:21 S	WS: 16 G:20 S	WS: 16 G:21 S	WS: 16 G:21 S	WS: 15 G:20 S	WS: 13 G:18 S	WS: 12 G:18 S	WS: 11 G:17 S	WS: 11 G:16 S	WS: 11 G:16 S	WS: 11 G:16 S	WS: 11 G:16 S	WS: 12 G:16 S	WS: 10 G:15 S	WS: 11 G:15 S	WS: 11 G:15 S	WS: 11 G:15 S	WS: 12 G:16 S	WS: 14 G:18 S	WS: 15 G:19 S	WS: 16 G:20 S	WS: 16 G:20 S	WS: 15 G:19 S	WS: 15 G:19 S	WS: 14 G:18 S	WS: 13 G:17 S	WS: 12 G:16 S	
Houston Pilots E - 51/52	WS: 16 G:16 SSW	WS: 14 G:15 S	WS: 17 G:19 S	WS: 18 G:19 S	WS: 18 G:20 S	WS: 19 G:20 S	WS: 19 G:23 S	WS: 20 G:23 S	WS: 18 G:22 S	WS: 17 G:21 S	WS: 17 G:21 S	WS: 17 G:21 S	WS: 18 G:22 S	WS: 16 G:20 S	WS: 14 G:18 S	WS: 13 G:18 S	WS: 13 G:17 S	WS: 12 G:17 S	WS: 12 G:17 S	WS: 12 G:17 S	WS: 11 G:16 S	WS: 11 G:16 S	WS: 11 G:16 S	WS: 12 G:16 S	WS: 12 G:16 S	WS: 12 G:16 S	WS: 13 G:16 S	WS: 14 G:18 S	WS: 15 G:19 S	WS: 16 G:20 S	WS: 16 G:20 S	WS: 16 G:20 S	WS: 15 G:19 S	WS: 15 G:19 S	WS: 14 G:18 S	WS: 13 G:17 S	
Houston Pilots D - 37/38	WS: 17 G:18 SSW	WS: 14 G:16 S	WS: 16 G:17 S	WS: 17 G:19 S	WS: 18 G:19 S	WS: 19 G:21 S	WS: 19 G:21 S	WS: 19 G:23 S	WS: 17 G:22 S	WS: 17 G:21 S	WS: 16 G:20 S	WS: 16 G:20 S	WS: 18 G:21 S	WS: 16 G:20 S	WS: 14 G:18 S	WS: 14 G:18 S	WS: 14 G:18 S	WS: 14 G:18 S	WS: 13 G:18 S	WS: 12 G:17 S	WS: 12 G:17 S	WS: 12 G:17 S	WS: 12 G:16 S	WS: 12 G:16 S	WS: 13 G:16 S	WS: 13 G:16 S	WS: 14 G:17 S	WS: 15 G:18 S	WS: 16 G:19 S	WS: 16 G:19 S	WS: 16 G:19 S	WS: 15 G:18 S	WS: 15 G:18 S	WS: 14 G:17 S	WS: 13 G:16 S	WS: 12 G:15 S	
Houston Pilots C - 25/26	WS: 15 G:17 SW	WS: 14 G:16 S	WS: 14 G:16 S	WS: 16 G:18 S	WS: 16 G:18 S	WS: 18 G:20 S	WS: 18 G:20 S	WS: 17 G:21 S	WS: 15 G:20 S	WS: 14 G:19 S	WS: 14 G:19 S	WS: 16 G:20 S	WS: 14 G:21 S	WS: 14 G:21 S	WS: 14 G:18 S	WS: 14 G:18 S	WS: 14 G:18 S	WS: 14 G:18 S	WS: 13 G:17 S	WS: 13 G:17 S	WS: 12 G:16 S	WS: 12 G:16 S	WS: 13 G:16 S	WS: 13 G:16 S	WS: 13 G:16 S	WS: 14 G:17 S	WS: 15 G:18 S	WS: 16 G:19 S	WS: 16 G:19 S	WS: 16 G:19 S	WS: 15 G:18 S	WS: 15 G:18 S	WS: 14 G:17 S	WS: 13 G:16 S	WS: 12 G:15 S	WS: 11 G:14 S	
Houston Pilots B - 11/12	WS: 13 G:15 SW	WS: 15 G:16 S	WS: 14 G:16 S	WS: 16 G:18 S	WS: 16 G:18 S	WS: 18 G:20 S	WS: 18 G:20 S	WS: 17 G:21 S	WS: 15 G:20 S	WS: 14 G:19 S	WS: 14 G:19 S	WS: 16 G:20 S	WS: 14 G:21 S	WS: 14 G:21 S	WS: 15 G:19 S	WS: 15 G:18 S	WS: 15 G:18 S	WS: 14 G:18 S	WS: 14 G:18 S	WS: 13 G:17 S	WS: 13 G:17 S	WS: 13 G:17 S	WS: 13 G:16 S	WS: 13 G:16 S	WS: 13 G:16 S	WS: 13 G:16 S	WS: 14 G:17 S	WS: 15 G:18 S	WS: 16 G:19 S	WS: 16 G:19 S	WS: 15 G:18 S	WS: 15 G:18 S	WS: 14 G:17 S	WS: 13 G:16 S	WS: 12 G:15 S	WS: 11 G:14 S	
Houston Pilots A - 1 & 2 Bravo	WS: 13 G:14 SW	WS: 15 G:16 S	WS: 12 G:15 SSW	WS: 15 G:16 S	WS: 16 G:17 S	WS: 17 G:18 S	WS: 17 G:18 S	WS: 18 G:20 S	WS: 17 G:19 S	WS: 17 G:19 S	WS: 17 G:19 S	WS: 18 G:20 S	WS: 20 G:21 S	WS: 20 G:22 S	WS: 18 G:20 S	WS: 17 G:19 S	WS: 16 G:19 S	WS: 16 G:19 S	WS: 16 G:18 S	WS: 15 G:18 S	WS: 15 G:17 S	WS: 14 G:17 S	WS: 14 G:17 S	WS: 13 G:16 S	WS: 13 G:16 S	WS: 13 G:16 S	WS: 14 G:16 S	WS: 15 G:17 S	WS: 16 G:18 S	WS: 16 G:18 S	WS: 15 G:17 S	WS: 15 G:17 S	WS: 15 G:17 S	WS: 14 G:16 S	WS: 13 G:15 S	WS: 12 G:14 S	

See slides below for official thoughts on winds.

Houston Pilots: Tue. 8/2/2022

Forecast Discussion

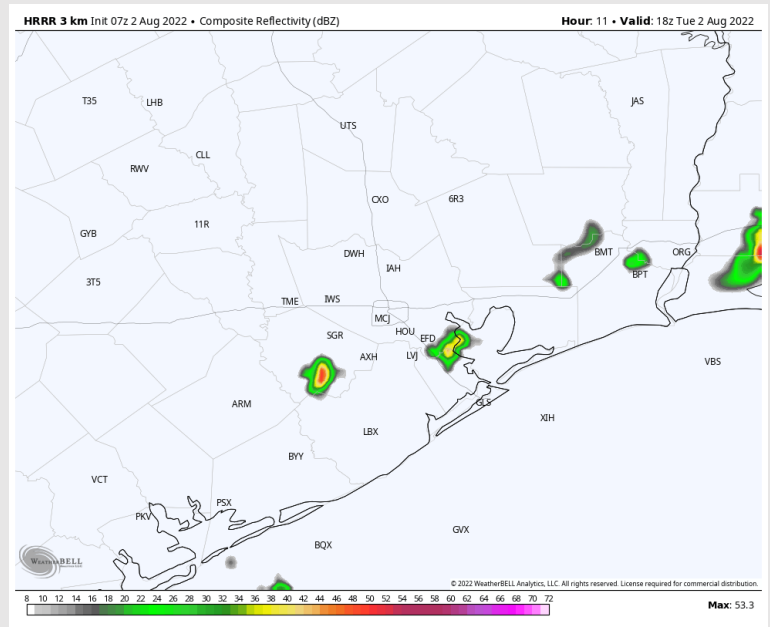
Precip: Eyeing 20-30% chances of isolated pop ups to continue this afternoon and evening before coverage wanes into the overnight. Precip for any one location would be rather short lived with lightning and locally heavy downpours possible under stronger cells.

Wind: Winds slowly increase this afternoon to 10-15 MPH sustained from the South (locally 13-18 MPH sustained possible across locations S of Station 51/52). Gusts of 15-20 MPH possible (locally higher under stronger storms).

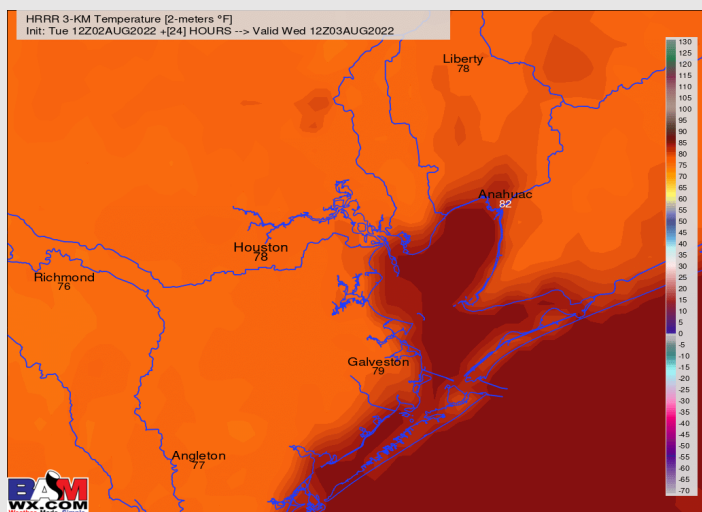
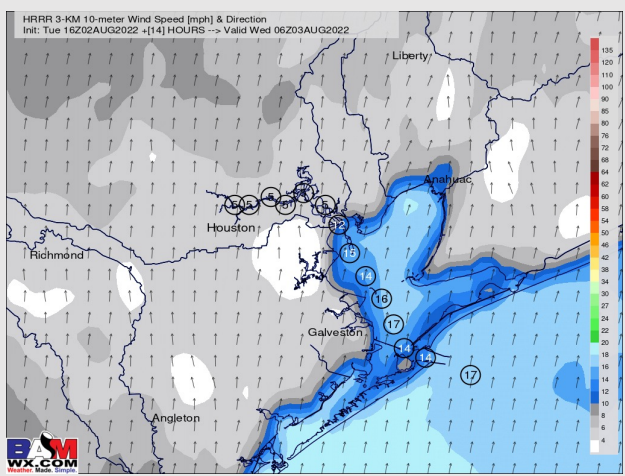
Temps: Lows drop back into the low to mid 80s for most stations, slightly cooler closer to the 610 bridge.

Visibility: Not anticipating fog concerns at the time, however, visibility may be reduced under a more moderate downpour.

Precip Forecast: 5 PM CT



Wind Speed
1 AM CT WED



Low Temps
Wed AM

Houston Pilots: Wed. 8/3/2022



Forecast Discussion

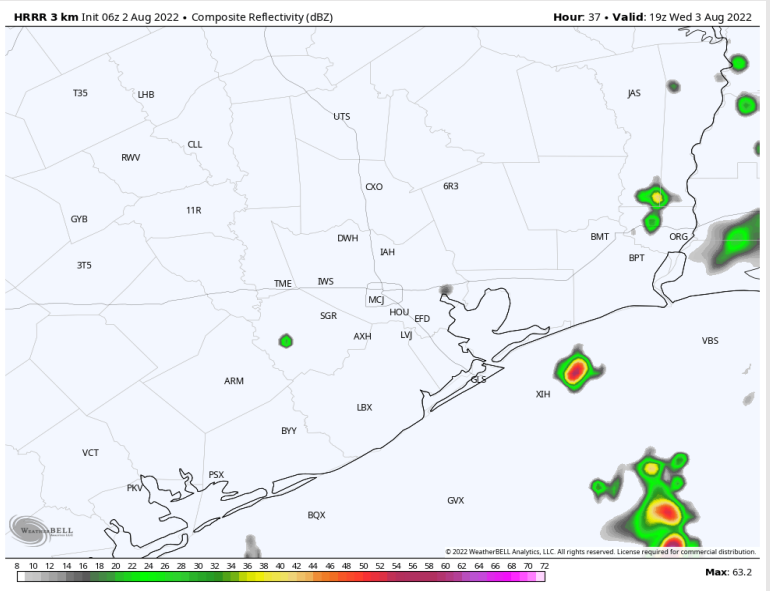
Precip: Chances for rain Wednesday, at this distance, looks very similar to today (Tuesday): 10/20% chance 6AM – 12PM, increasing to 20/30% chances 12 – 6PM. Lightning and locally heavy downpours possible under stronger cells.

Wind: Sustained winds Wednesday morning will be 8-13 MPH out of the SSW. Winds slowly increase after 12/1 PM to 10-15 MPH mid afternoon to evening veering from the South (locally 13-18 MPH sustained possible across locations near Station 51/52). Gusts of 20-25 MPH possible under stronger storms.

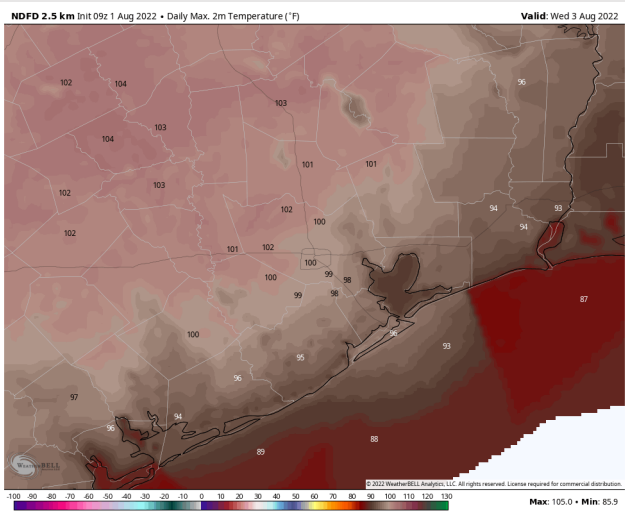
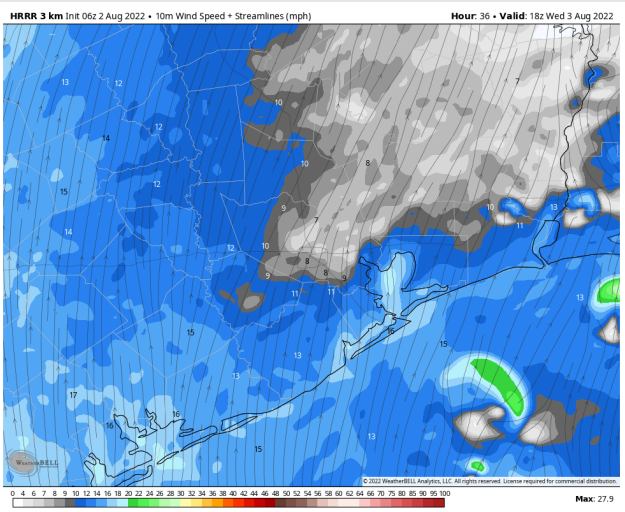
Temps: High temps Wednesday in the upper 90s F for most stations. Highs in the upper 80s F near boarding station.

Visibility: Not anticipating fog concerns at this time.

Precip Forecast: 2 PM CT



Wind Speed
1 PM CT



High Temps
Wednesday

Houston Pilots: Thur. 8/4/2022



Forecast Discussion

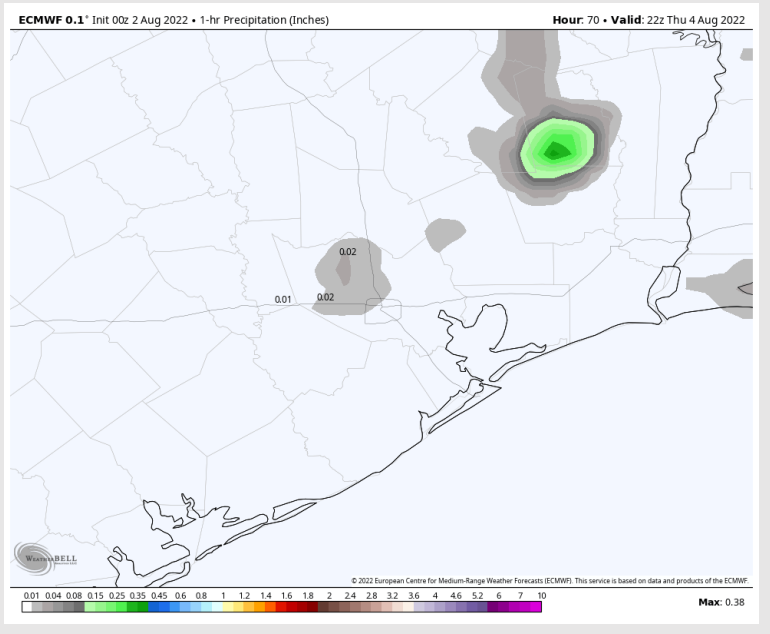
Precip: Similar to Tuesday / Wednesday, the morning hours through about noon look overall dry with just a very isolated rainfall threat. 12- 6PM right now will also see ~20/30% chance for a shower / t'storm. Our next bigger precipitation chance increases later Friday morning into afternoon.

Wind: Sustained winds Thursday morning will be 8-13 MPH out of the SSW. Winds slowly increase after 12/1 PM to 13-18 MPH mid afternoon to evening veering from the South (locally 15-20 MPH sustained possible across locations near Station 51/52). Gusts of 20-25 MPH possible under stronger storms.

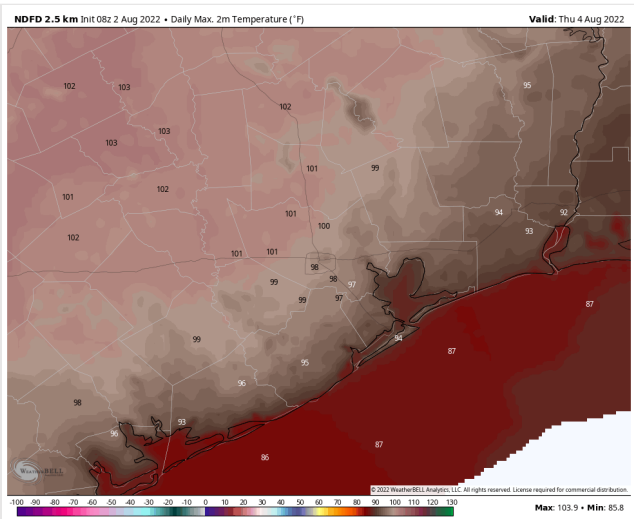
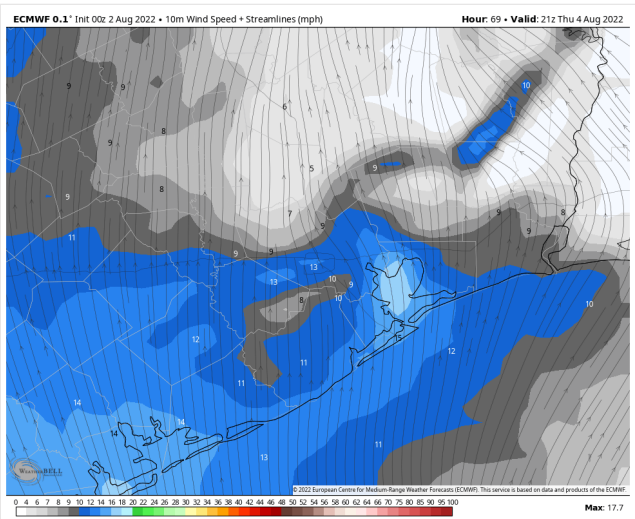
Temps: High temps Thursday in the upper 90s F for most stations. Highs in the upper 80s F near boarding station.

Visibility: No fog is expected into the overnight hours.

Precip Forecast: 5 PM CT

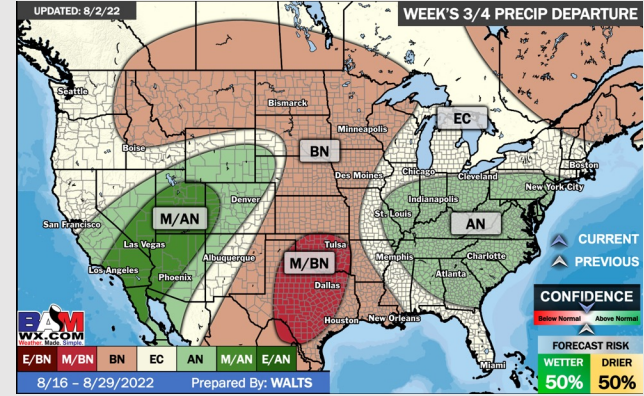
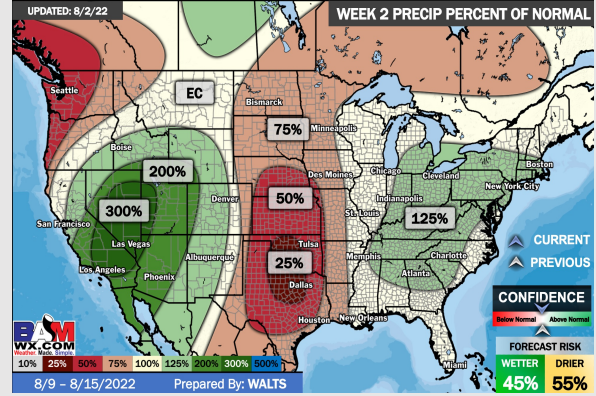
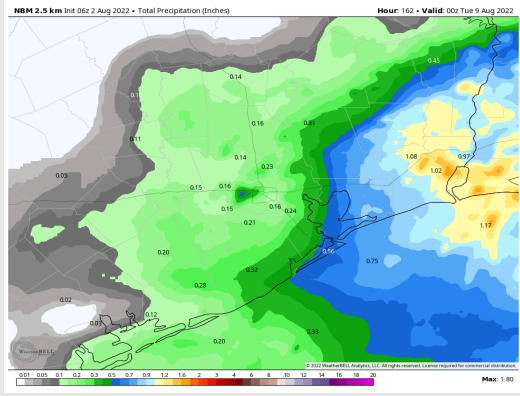
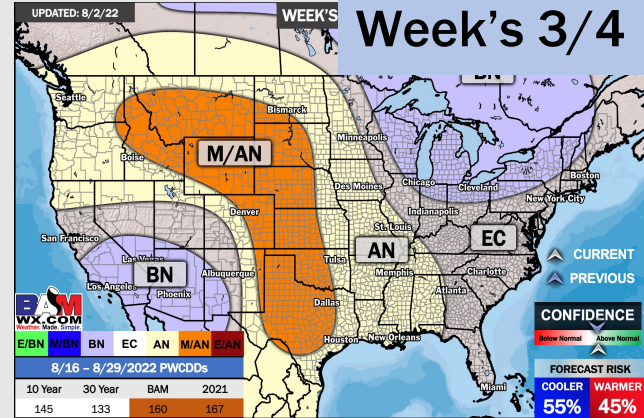
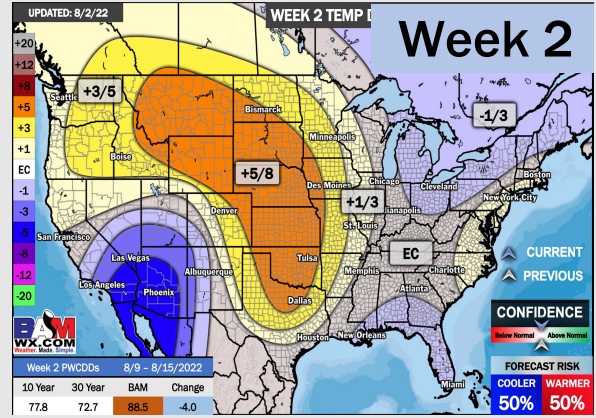
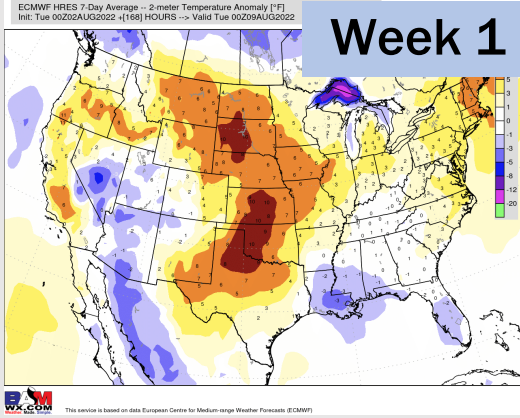


Wind Gusts
4 PM CT



High Temps
THUR

Houston Pilots: 8/2/22



- Temperatures expected to be slightly above normal this week. Daily, scattered chances for precipitation will be possible over the next few days, but not widespread heavy threats at this time...more frequent precipitation chances look to increase Friday into the weekend.
- Week 2 likely features normal risks for temperatures and below normal precipitation risks.
- The weeks ¾ timeframe into mid-August looks to feature above normal temperatures and below normal risks for precip.