

Houston Pilots Forecast Package



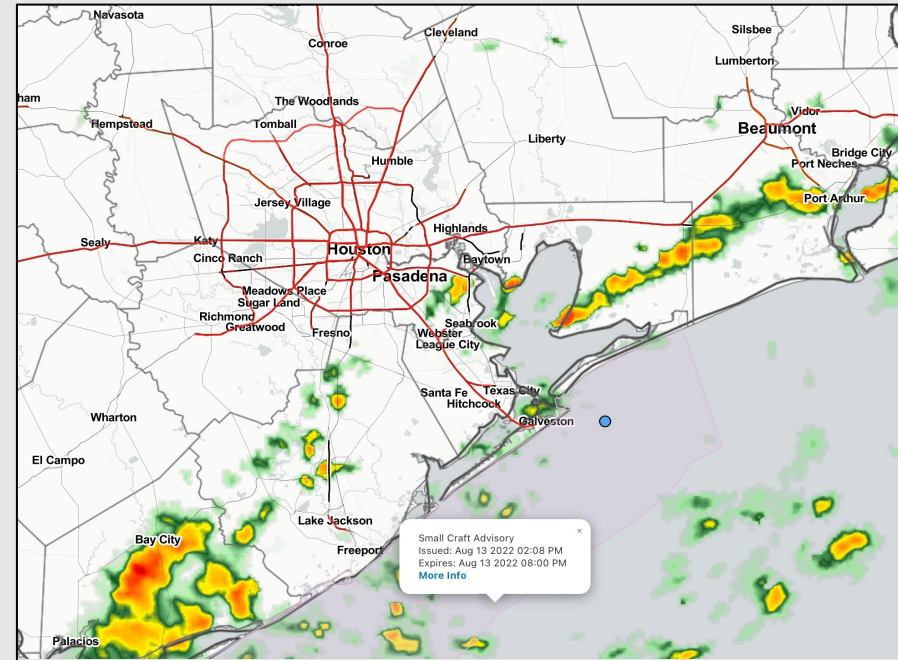
Updated: 3:00 PM CT

Saturday, August 13, 2022

Forecaster: Alyssa McClung

Weather Headlines

- Scattered showers and thunderstorm chances will continue through Sun.
- Flow (winds) will stay predominately out of the South/ Southeast the next several days.
- Not favoring any tropical threats over the next 7 days, however keeping an eye on a tropical disturbance further S (good agreement this disturbance stays SW of HOU Metro).

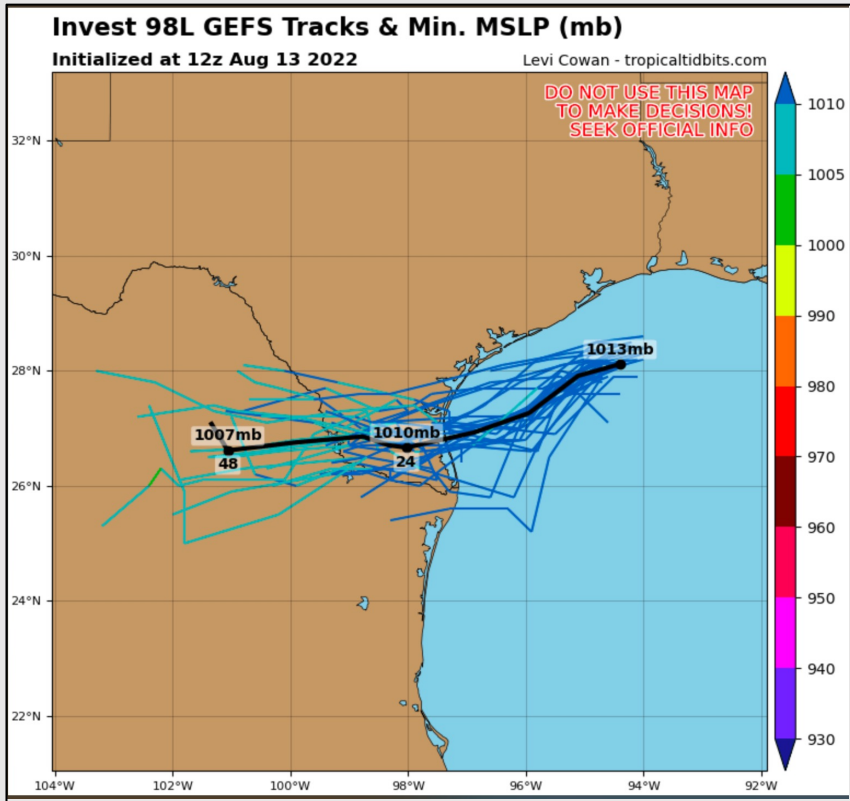


Radar/ NWS Alerts: 3:00 PM CT



As always, please do not hesitate to reach out to us with any forecast questions via the chat option on the Weather Porthole or our on-call number, **(317)-560-8122** press 1 for forecast questions.

Various model tracks next 10 days



No tropical threat for Houston expected over the next 7-10 days, however keeping an eye on a minor tropical disturbance anticipated to move into southern TX. There is very good agreement for this disturbance to stay SW of the HOU Metro area, however a potential uptick in storm chances through the weekend will be possible especially further out near the stations in the Gulf.

Confidence

Above Normal Below Normal

Houston Pilots: sat. 8/13/2022



Forecast Discussion

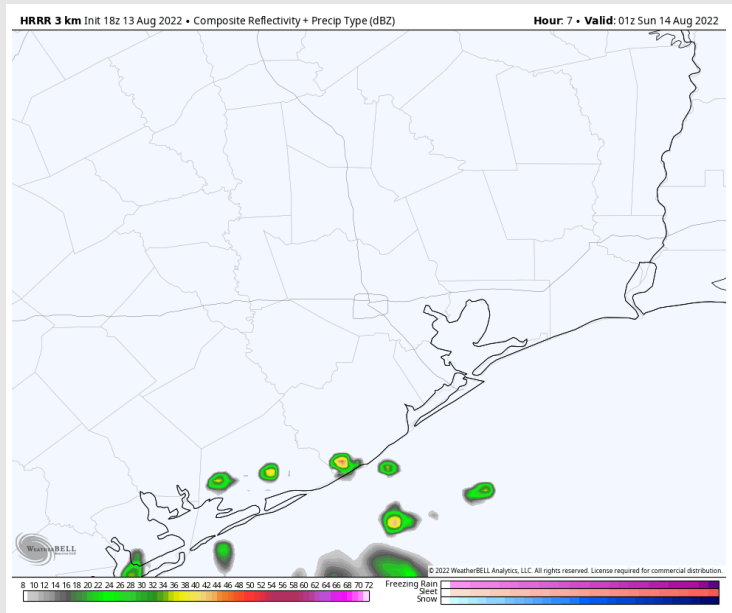
Precip: 40% shower/storm coverage until 5 PM for stations in Galveston Bay and Houston Metro. Chances lessen to 10-20% after 5PM and continue through the overnight (better chances SW of monitored stations). Gusty winds, locally heavy downpours and lightning may be possible under stronger cells.

Wind: Sustained winds of 10-15 MPH veering out of the SE with gusts up to 20-25 MPH. Winds north of Morgan's Point calmer after 10PM at 3-8 MPH.

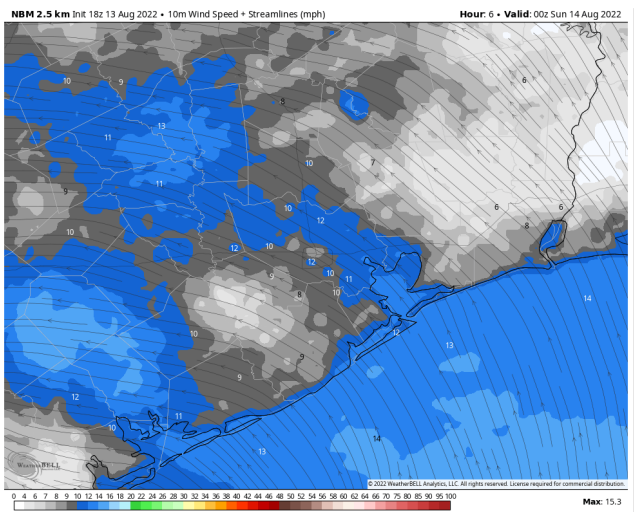
Temps: Low temps Sunday morning in the upper 70s F for most stations and in the low 80s F near the boarding station.

Visibility: Not anticipating fog concerns at this time, however reduced visibility is possible under heavy downpours early this evening.

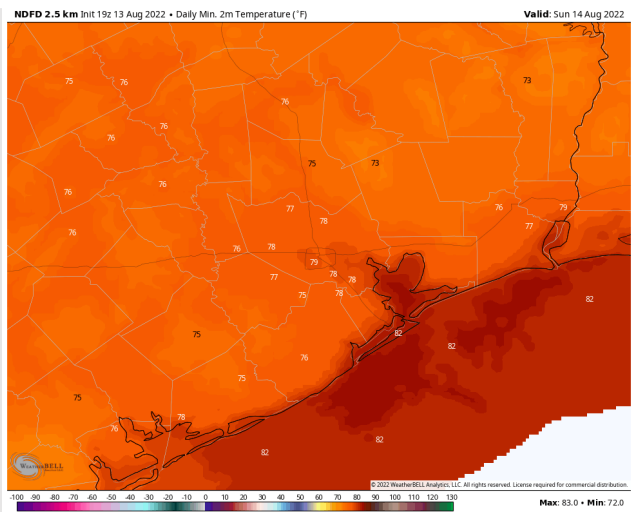
Precip Forecast: 8 PM CT



Wind Speed
7 PM CT



Low Temps
SUN AM



Houston Pilots: Sun. 8/14/2022

Forecast Discussion

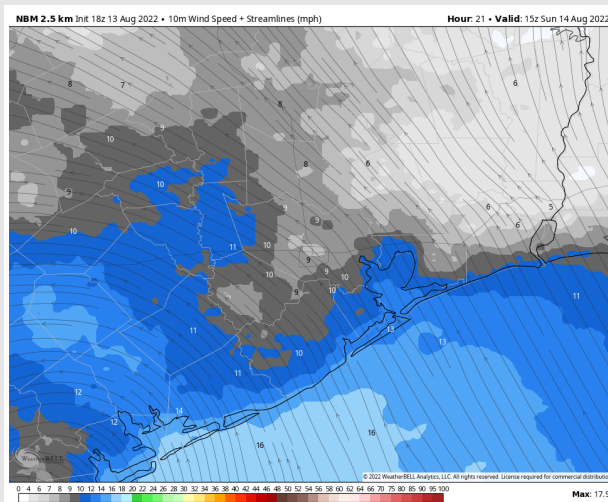
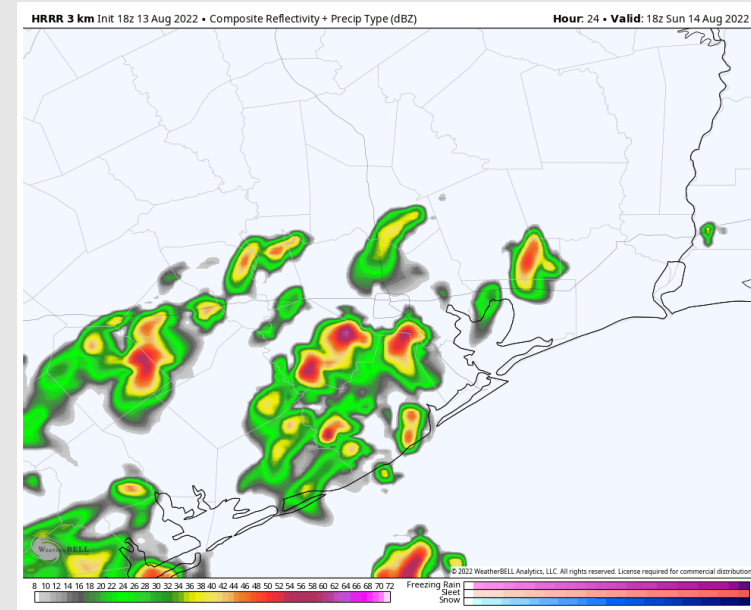
Precip: 10-20% chance for scattered showers/storms starting at 4AM tomorrow. Coverage will increase into the mid-morning hours. Around 8-9AM coverage will increase to 50-60% until the threat of rain moves out of the Houston Metro area around 3-4PM. After 4PM the threat of rain will diminish in the area into the evening and overnight. Lightning and locally heavy downpours possible under stronger storms.

Wind: Sustained winds out of the south at 10-15 MPH throughout the AM and PM Sunday. Winds north of Morgan's Point a bit calmer 3-8 MPH in the AM. Anticipating gusts up to 20 MPH to be possible.

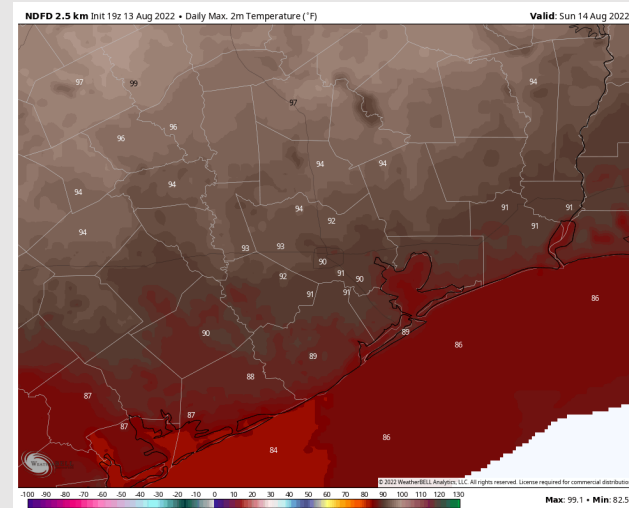
Temps: High temps in the upper 80s F near the boarding station with temps in the low 90s F for all other stations.

Visibility: Not anticipating fog concerns at this time, however reduced visibility is possible under a heavy downpour

Precip Forecast: 1 PM CT



Wind Speed
10 AM CT



High Temps
Sunday

Houston Pilots: Mon. 8/15/2022



Forecast Discussion

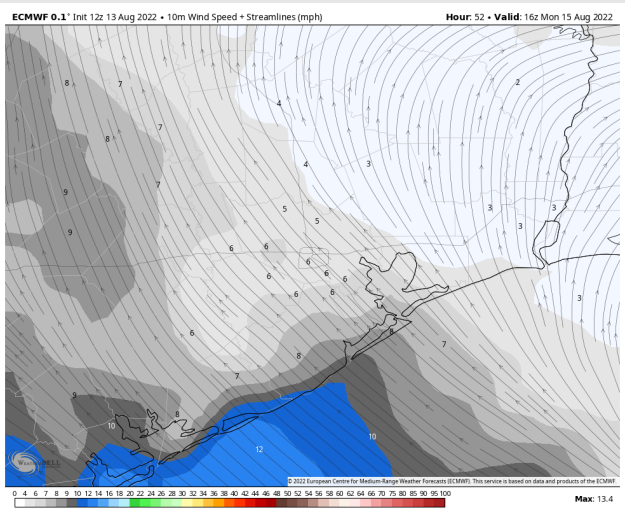
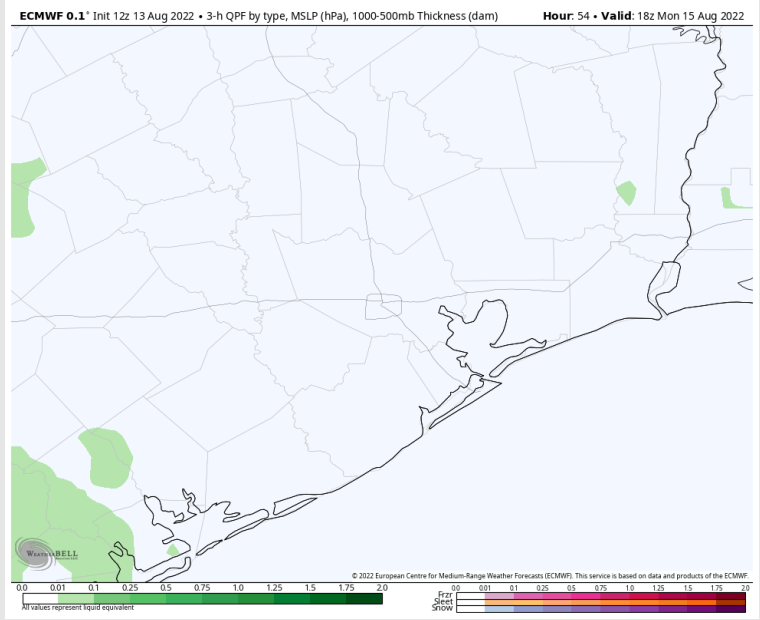
Precip: Favoring Monday to have drier conditions outside of less than 10% chance for an isolated sprinkle as system continues to move south of HOU.

Wind: Sustained winds out of the S/SE of 5-10 MPH throughout the day Monday. Winds north of Morgan's Point expected to be a bit calmer 3-8MPH in the AM.

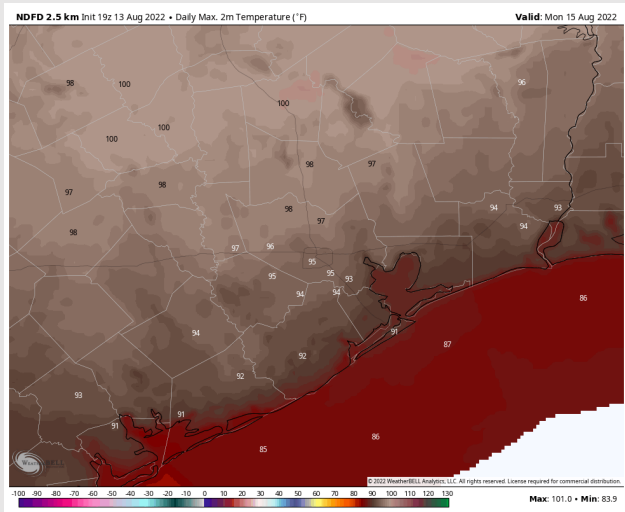
Temps: High temps in the low to mid 90s F for most stations and in the mid 80s F near the boarding station.

Visibility: Not anticipating fog concerns at this time.

Precip Forecast: 1 PM CT

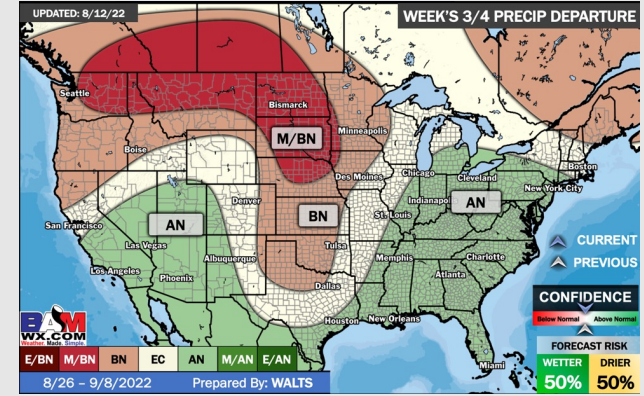
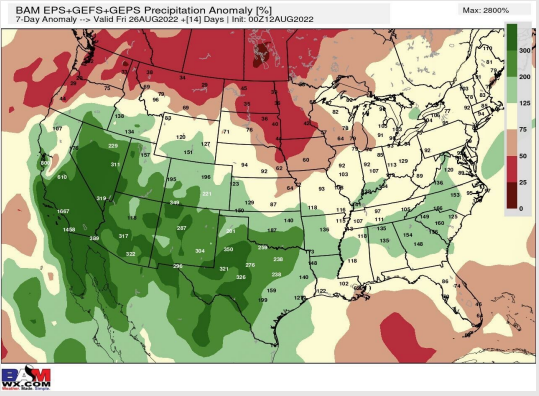
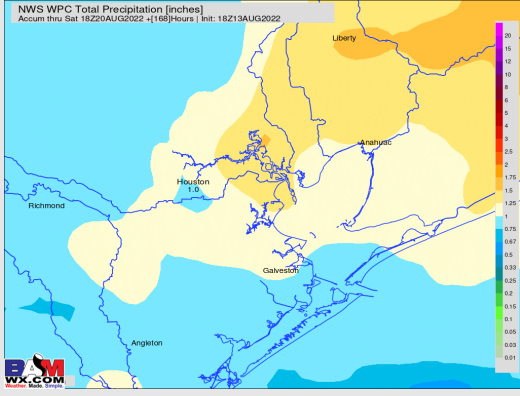
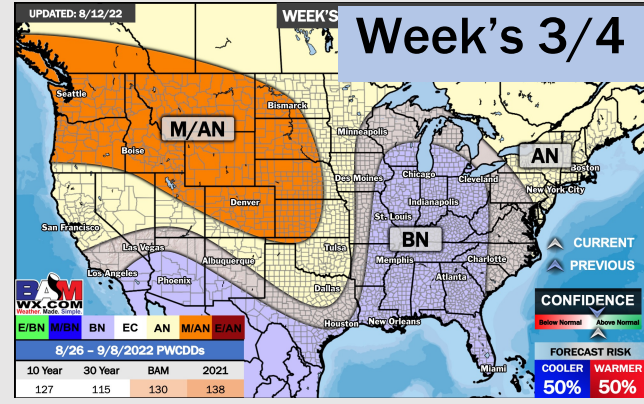
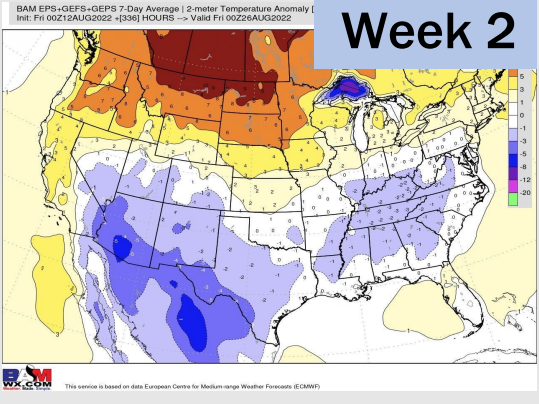
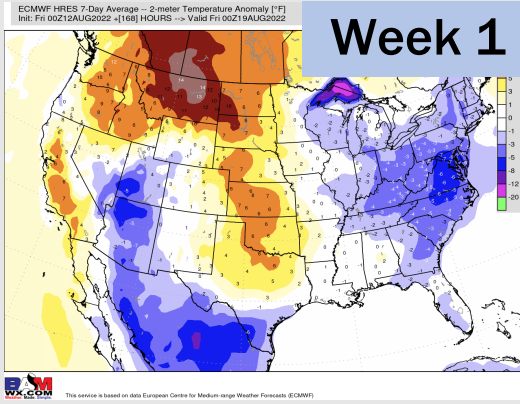


Wind Speed
11 AM CT



High Temps
Monday

Houston Pilots: 8/13/22



- Temperatures expected to be normal this week. Daily storm chances over the next few days.
- Week 2 likely features normal risks for temperatures and above normal risks for precipitation.
- The weeks 3/4 timeframe into early September looks to feature below normal temperatures and above normal risks for precip.