

Houston Pilots Forecast Package

Houston Pilots

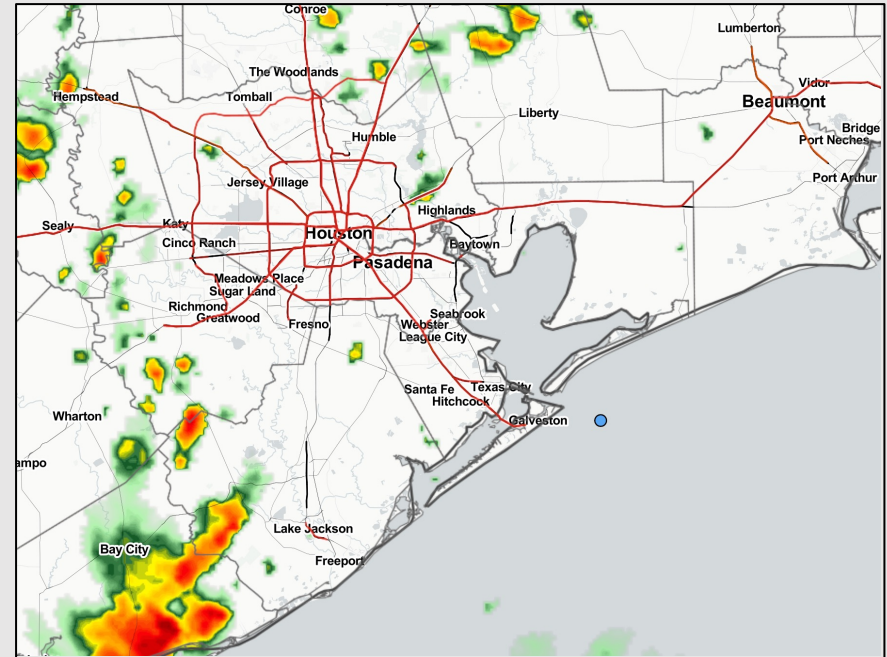
Updated: 3:00 PM CT

Friday, August 12, 2022

Forecaster: Alyssa McClung

Weather Headlines

- Scattered showers and thunderstorm chances will continue through Sun.
- Flow (winds) will stay predominately out of the South/ Southeast the next several days.
- Not favoring any tropical threats over the next 7 days, however keeping an eye on a tropical disturbance further S (good agreement this disturbance stays SW of HOU Metro).

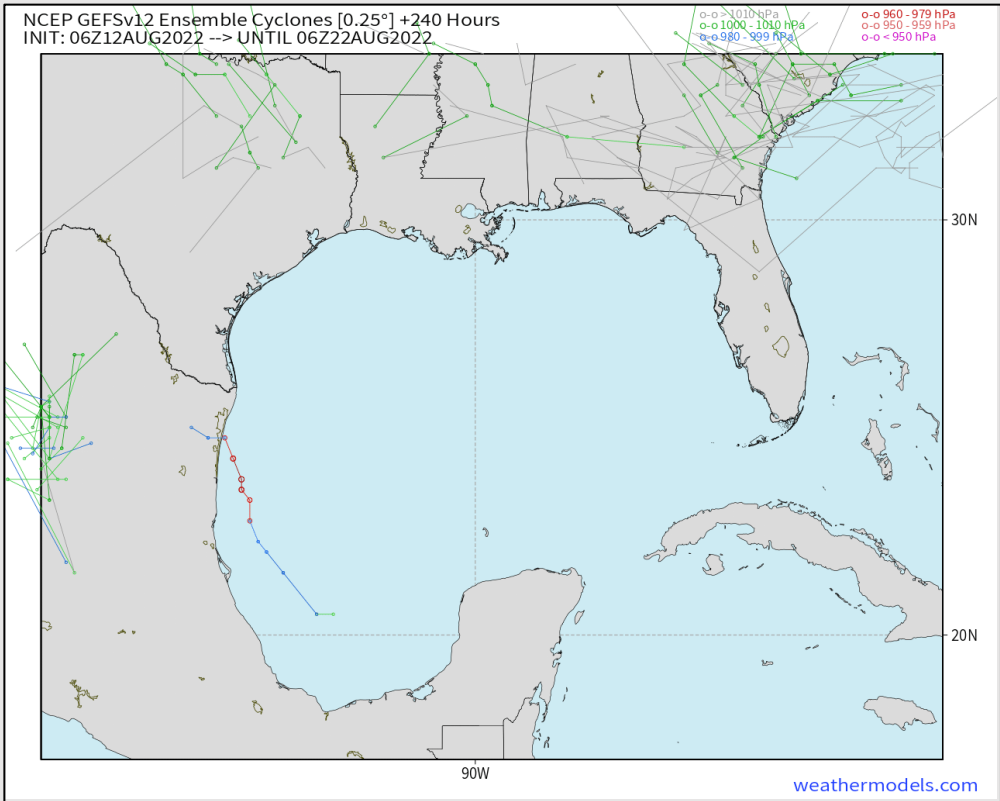


Radar/ NWS Alerts: 3:00 PM CT



As always, please do not hesitate to reach out to us with any forecast questions via the chat option on the Weather Porthole or our on-call number, **(317)-560-8122** press 1 for forecast questions.

Various model tracks next 10 days



No tropical threats expected over the next 7-10 days, however keeping an eye on a minor tropical disturbance anticipated to move into southern TX. There is very good agreement for this disturbance to stay SW of the HOU Metro area, however a potential uptick in storm chances through the weekend is possible.

Confidence

Above Normal	Below Normal
--------------	--------------

Houston Pilots Wind Report



Confidence



Example

Sustained wind 13 MPH
Gusts 18 MPH
Wind from the N

WS: 13
G:18
N

Time	08-12-2022 Fri 12pm	08-12-2022 Fri 1pm	08-12-2022 Fri 2pm	08-12-2022 Fri 3pm	08-12-2022 Fri 4pm	08-12-2022 Fri 5pm	08-12-2022 Fri 6pm	08-12-2022 Fri 7pm	08-12-2022 Fri 8pm	08-12-2022 Fri 9pm	08-12-2022 Fri 10pm	08-12-2022 Fri 11pm	08-13-2022 Sat 12am	08-13-2022 Sat 1am	08-13-2022 Sat 2am	08-13-2022 Sat 3am	08-13-2022 Sat 4am	08-13-2022 Sat 5am	08-13-2022 Sat 6am	08-13-2022 Sat 7am	08-13-2022 Sat 8am	08-13-2022 Sat 9am	08-13-2022 Sat 10am	08-13-2022 Sat 11am	08-13-2022 Sat 12pm	08-13-2022 Sat 1pm	08-13-2022 Sat 2pm	08-13-2022 Sat 3pm	08-13-2022 Sat 4pm	08-13-2022 Sat 5pm	08-13-2022 Sat 6pm	08-13-2022 Sat 7pm	08-13-2022 Sat 8pm	08-13-2022 Sat 9pm	08-13-2022 Sat 10pm	08-13-2022 Sat 11pm							
Houston Pilots N - 610 Bridge	WS: 8 G:12 NNE	WS: 8 G:13 NE	WS: 7 G:11 ENE	WS: 7 G:12 ENE	WS: 8 G:11 S	WS: 11 G:18 S	WS: 5 G:12 NE	WS: 4 G:8 SSE	WS: 2 G:7 SSE	WS: 1 G:5 SE	WS: 1 G:6 SE	WS: 2 G:5 ENE	WS: 3 G:4 E	WS: 2 G:4 NNE	WS: 2 G:4 NNE	WS: 2 G:3 NNE	WS: 3 G:4 NNE	WS: 3 G:5 NNE	WS: 4 G:6 NNE	WS: 5 G:7 NNE	WS: 6 G:9 NNE	WS: 6 G:13 NE	WS: 9 G:15 NE	WS: 9 G:15 ENE	WS: 9 G:16 ENE	WS: 10 G:18 E	WS: 10 G:19 E	WS: 10 G:18 E	WS: 10 G:18 E	WS: 10 G:18 E	WS: 10 G:18 E	WS: 10 G:18 E	WS: 9 G:17 ESE	WS: 9 G:16 E	WS: 8 G:15 E	WS: 7 G:13 E	WS: 5 G:11 E	WS: 4 G:9 E					
Houston Pilots M - Kinder 1	WS: 8 G:12 NNE	WS: 8 G:12 NE	WS: 6 G:11 ENE	WS: 8 G:12 ENE	WS: 8 G:11 E	WS: 8 G:13 WSW	WS: 5 G:12 NE	WS: 4 G:8 SSE	WS: 2 G:7 SSE	WS: 1 G:6 ESE	WS: 1 G:7 SSE	WS: 3 G:4 ENE	WS: 3 G:7 ENE	WS: 2 G:4 NNE	WS: 2 G:4 NNE	WS: 2 G:3 NNE	WS: 3 G:3 NNE	WS: 3 G:4 NNE	WS: 4 G:6 NNE	WS: 5 G:7 NNE	WS: 6 G:9 NNE	WS: 8 G:13 NE	WS: 9 G:14 NE	WS: 9 G:15 NE	WS: 9 G:15 ENE	WS: 9 G:16 ENE	WS: 10 G:18 E	WS: 10 G:19 E	WS: 10 G:18 E	WS: 10 G:18 E	WS: 10 G:18 E	WS: 10 G:18 E	WS: 10 G:17 ESE	WS: 9 G:16 ESE	WS: 8 G:14 E	WS: 7 G:12 E	WS: 5 G:11 E	WS: 4 G:10 E					
Houston Pilots L - Greens Bayou	WS: 9 G:13 NNE	WS: 7 G:12 NE	WS: 6 G:10 ENE	WS: 8 G:12 E	WS: 7 G:11 E	WS: 5 G:9 W	WS: 4 G:10 ESE	WS: 4 G:8 S	WS: 2 G:7 S	WS: 1 G:7 S	WS: 1 G:8 S	WS: 2 G:7 S	WS: 3 G:6 ENE	WS: 2 G:4 ENE	WS: 2 G:4 NNE	WS: 2 G:3 NNE	WS: 3 G:3 NNE	WS: 3 G:4 NNE	WS: 4 G:6 NNE	WS: 5 G:7 NNE	WS: 6 G:9 NNE	WS: 8 G:13 NE	WS: 9 G:15 NE	WS: 9 G:15 ENE	WS: 10 G:16 ENE	WS: 10 G:16 ENE	WS: 10 G:18 E	WS: 10 G:18 E	WS: 10 G:18 E	WS: 10 G:18 E	WS: 10 G:18 E	WS: 11 G:18 E	WS: 10 G:17 ESE	WS: 9 G:16 ESE	WS: 8 G:14 E	WS: 7 G:12 E	WS: 5 G:11 E	WS: 5 G:10 E					
Houston Pilots K - Shell Creek	WS: 8 G:12 NNE	WS: 7 G:12 NE	WS: 6 G:10 ENE	WS: 8 G:12 E	WS: 8 G:12 E	WS: 5 G:9 SW	WS: 4 G:10 SE	WS: 4 G:7 S	WS: 2 G:7 S	WS: 1 G:8 S	WS: 2 G:7 SSE	WS: 2 G:6 NNE	WS: 3 G:7 NE	WS: 2 G:5 N	WS: 3 G:6 NNE	WS: 2 G:4 NNE	WS: 3 G:4 NNE	WS: 3 G:5 NNE	WS: 4 G:6 NNE	WS: 5 G:7 NNE	WS: 6 G:9 NNE	WS: 9 G:13 NE	WS: 10 G:15 NE	WS: 10 G:15 ENE	WS: 10 G:15 ENE	WS: 10 G:16 ENE	WS: 10 G:18 E	WS: 10 G:18 E	WS: 10 G:18 E	WS: 11 G:18 E	WS: 11 G:18 E	WS: 12 G:17 ESE	WS: 11 G:16 ESE	WS: 10 G:15 ESE	WS: 9 G:14 ESE	WS: 7 G:12 E	WS: 6 G:11 ESE	WS: 5 G:10 ESE					
Houston Pilots J - Lynchburg Ferries	WS: 8 G:12 NNE	WS: 7 G:11 NE	WS: 6 G:10 ENE	WS: 8 G:13 E	WS: 8 G:12 E	WS: 5 G:8 SSW	WS: 5 G:8 E	WS: 5 G:8 SSW	WS: 3 G:7 S	WS: 3 G:9 SSW	WS: 2 G:7 SSE	WS: 2 G:4 E	WS: 2 G:7 NE	WS: 2 G:5 NNE	WS: 3 G:6 NNE	WS: 4 G:4 NNE	WS: 4 G:4 NNE	WS: 4 G:5 NNE	WS: 4 G:6 NNE	WS: 5 G:7 NNE	WS: 6 G:9 NNE	WS: 9 G:13 NE	WS: 10 G:15 NE	WS: 10 G:15 ENE	WS: 10 G:16 ENE	WS: 11 G:18 ENE	WS: 11 G:18 E	WS: 11 G:18 E	WS: 10 G:18 E	WS: 10 G:18 E	WS: 11 G:18 E	WS: 11 G:18 E	WS: 12 G:17 ESE	WS: 11 G:16 ESE	WS: 10 G:15 ESE	WS: 8 G:14 E	WS: 7 G:12 E	WS: 6 G:11 ESE	WS: 5 G:10 E				
Houston Pilots I - Exxon 3	WS: 8 G:13 NE	WS: 8 G:11 NE	WS: 7 G:11 E	WS: 8 G:13 E	WS: 10 G:14 ESE	WS: 6 G:10 SE	WS: 7 G:11 ESE	WS: 6 G:8 S	WS: 4 G:8 SSE	WS: 5 G:11 SSE	WS: 2 G:8 SE	WS: 3 G:6 NE	WS: 3 G:7 NNE	WS: 3 G:6 NNE	WS: 3 G:6 NNE	WS: 4 G:7 NE	WS: 4 G:6 NNE	WS: 5 G:7 NNE	WS: 5 G:8 NNE	WS: 6 G:9 NNE	WS: 7 G:11 NNE	WS: 9 G:13 NE	WS: 10 G:15 NE	WS: 10 G:15 ENE	WS: 11 G:16 ENE	WS: 11 G:16 ENE	WS: 11 G:18 E	WS: 11 G:18 E	WS: 11 G:18 E	WS: 11 G:18 E	WS: 11 G:18 E	WS: 12 G:17 ESE	WS: 11 G:16 ESE	WS: 10 G:15 ESE	WS: 8 G:14 ESE	WS: 7 G:13 E	WS: 6 G:11 ESE	WS: 6 G:11 E					
Houston Pilots H - Morgans Point	WS: 9 G:13 NE	WS: 10 G:12 ENE	WS: 9 G:12 E	WS: 9 G:14 E	WS: 13 G:15 SE	WS: 8 G:12 SE	WS: 11 G:13 SSE	WS: 7 G:8 SSE	WS: 6 G:9 SSE	WS: 9 G:13 SE	WS: 3 G:6 SE	WS: 5 G:8 NE	WS: 4 G:8 NE	WS: 4 G:8 NNE	WS: 5 G:9 NNE	WS: 5 G:8 NNE	WS: 6 G:8 NNE	WS: 6 G:9 NNE	WS: 6 G:9 NNE	WS: 7 G:11 NE	WS: 8 G:12 NE	WS: 8 G:12 NE	WS: 11 G:16 NE	WS: 11 G:16 ENE	WS: 11 G:16 ENE	WS: 11 G:17 ENE	WS: 12 G:18 ENE	WS: 11 G:18 E	WS: 11 G:18 E	WS: 12 G:17 E	WS: 12 G:17 E	WS: 12 G:17 E	WS: 12 G:17 E	WS: 11 G:16 ESE	WS: 11 G:16 ESE	WS: 9 G:14 ESE	WS: 9 G:13 ESE	WS: 8 G:12 ESE	WS: 7 G:11 ESE				
Houston Pilots G - 75/76	WS: 11 G:15 NE	WS: 13 G:15 ENE	WS: 11 G:15 E	WS: 11 G:15 SE	WS: 11 G:17 SE	WS: 11 G:14 SE	WS: 11 G:13 SSE	WS: 7 G:8 SSE	WS: 7 G:9 SSE	WS: 12 G:13 SE	WS: 4 G:6 SE	WS: 8 G:10 ENE	WS: 7 G:9 ENE	WS: 7 G:8 ENE	WS: 7 G:8 ENE	WS: 9 G:10 NNE	WS: 9 G:11 NNE	WS: 8 G:11 NNE	WS: 9 G:12 NNE	WS: 9 G:13 NNE	WS: 9 G:13 NNE	WS: 10 G:14 NE	WS: 11 G:15 NE	WS: 11 G:15 NE	WS: 11 G:16 NE	WS: 12 G:17 ENE	WS: 12 G:17 ENE	WS: 12 G:17 ENE	WS: 12 G:17 ENE	WS: 12 G:17 ENE	WS: 12 G:17 ENE	WS: 12 G:17 ENE	WS: 13 G:18 ENE	WS: 12 G:17 ESE	WS: 11 G:16 ESE	WS: 10 G:15 ESE	WS: 10 G:14 ESE	WS: 10 G:14 ESE					
Houston Pilots F - 63/64	WS: 12 G:16 NE	WS: 14 G:16 NE	WS: 11 G:14 ENE	WS: 12 G:14 ESE	WS: 15 G:16 SE	WS: 14 G:16 SE	WS: 11 G:13 SE	WS: 7 G:9 SE	WS: 9 G:9 SE	WS: 8 G:10 ESE	WS: 5 G:7 ESE	WS: 10 G:11 E	WS: 8 G:11 E	WS: 10 G:11 ENE	WS: 11 G:12 ENE	WS: 8 G:10 ENE	WS: 9 G:11 NE	WS: 9 G:12 NE	WS: 10 G:12 NE	WS: 10 G:12 NE	WS: 11 G:13 NE	WS: 11 G:13 NE	WS: 12 G:14 NE	WS: 12 G:14 NE	WS: 12 G:14 NE	WS: 12 G:14 NE	WS: 12 G:14 NE	WS: 12 G:14 NE	WS: 12 G:14 NE	WS: 12 G:14 NE	WS: 12 G:14 NE	WS: 12 G:14 NE	WS: 12 G:14 NE	WS: 12 G:14 NE	WS: 12 G:14 NE	WS: 12 G:14 NE	WS: 11 G:13 ESE	WS: 11 G:13 ESE	WS: 11 G:13 ESE	WS: 11 G:13 ESE	WS: 11 G:13 ESE		
Houston Pilots E - 51/52	WS: 11 G:15 NE	WS: 10 G:16 NE	WS: 14 G:13 ENE	WS: 13 G:14 ESE	WS: 13 G:14 ESE	WS: 17 G:18 ESE	WS: 9 G:13 SE	WS: 7 G:9 SE	WS: 8 G:9 SE	WS: 7 G:8 E	WS: 6 G:7 E	WS: 10 G:11 E	WS: 8 G:11 ENE	WS: 10 G:12 ENE	WS: 11 G:13 ENE	WS: 8 G:11 ENE	WS: 9 G:11 NE	WS: 10 G:12 NE	WS: 10 G:12 NE	WS: 11 G:13 NE	WS: 11 G:13 NE	WS: 12 G:14 NE	WS: 12 G:14 NE	WS: 12 G:14 NE	WS: 12 G:14 NE	WS: 12 G:14 NE	WS: 12 G:14 NE	WS: 12 G:14 NE	WS: 12 G:14 NE	WS: 12 G:14 NE	WS: 12 G:14 NE	WS: 12 G:14 NE	WS: 12 G:14 NE	WS: 12 G:14 NE	WS: 12 G:14 NE	WS: 12 G:14 NE	WS: 12 G:14 NE	WS: 12 G:14 NE	WS: 11 G:13 ESE	WS: 11 G:13 ESE	WS: 11 G:13 ESE	WS: 11 G:13 ESE	
Houston Pilots D - 37/38	WS: 11 G:14 NE	WS: 14 G:16 ENE	WS: 12 G:13 ESE	WS: 13 G:14 ESE	WS: 15 G:17 ESE	WS: 15 G:14 SE	WS: 15 G:13 SSE	WS: 7 G:8 SSE	WS: 7 G:9 SSE	WS: 8 G:9 SSE	WS: 7 G:7 ESE	WS: 9 G:11 ENE	WS: 9 G:11 ENE	WS: 12 G:14 ENE	WS: 11 G:13 ENE	WS: 9 G:11 NE	WS: 9 G:11 NE	WS: 10 G:12 NE	WS: 10 G:12 NE	WS: 11 G:13 NE	WS: 11 G:13 NE	WS: 12 G:14 NE	WS: 12 G:14 NE	WS: 12 G:14 NE	WS: 12 G:14 NE	WS: 12 G:14 NE	WS: 12 G:14 NE	WS: 12 G:14 NE	WS: 12 G:14 NE	WS: 12 G:14 NE	WS: 12 G:14 NE	WS: 12 G:14 NE	WS: 12 G:14 NE	WS: 12 G:14 NE	WS: 12 G:14 NE	WS: 12 G:14 NE	WS: 12 G:14 NE	WS: 12 G:14 NE	WS: 11 G:13 ESE	WS: 11 G:13 ESE	WS: 11 G:13 ESE	WS: 11 G:13 ESE	
Houston Pilots C - 25/26	WS: 9 G:14 NE	WS: 14 G:18 E	WS: 12 G:14 ESE	WS: 12 G:14 ESE	WS: 10 G:13 ESE	WS: 13 G:15 E	WS: 8 G:12 E	WS: 7 G:9 ESE	WS: 7 G:9 ESE	WS: 9 G:10 E	WS: 6 G:7 ENE	WS: 8 G:11 ENE	WS: 8 G:12 ENE	WS: 10 G:13 ENE	WS: 11 G:14 ENE	WS: 8 G:11 ENE	WS: 8 G:11 ENE	WS: 9 G:12 NE	WS: 10 G:13 NE	WS: 10 G:13 NE	WS: 11 G:14 NE	WS: 11 G:14 NE	WS: 12 G:15 NE	WS: 12 G:15 NE	WS: 12 G:15 NE	WS: 12 G:15 NE	WS: 12 G:15 NE	WS: 12 G:15 NE	WS: 12 G:15 NE	WS: 12 G:15 NE	WS: 12 G:15 NE	WS: 12 G:15 NE	WS: 12 G:15 NE	WS: 12 G:15 NE	WS: 12 G:15 NE	WS: 12 G:15 NE	WS: 12 G:15 NE	WS: 11 G:13 ESE	WS: 11 G:13 ESE	WS: 11 G:13 ESE	WS: 11 G:13 ESE		
Houston Pilots B - 11/12	WS: 10 G:13 NE	WS: 13 G:18 E	WS: 13 G:14 ESE	WS: 13 G:15 ESE	WS: 12 G:12 ESE	WS: 12 G:14 E	WS: 9 G:11 E	WS: 9 G:9 ESE	WS: 9 G:10 ENE	WS: 6 G:7 ENE	WS: 6 G:11 ENE	WS: 10 G:13 ENE	WS: 11 G:14 ENE	WS: 12 G:15 ENE	WS: 8 G:11 ENE	WS: 8 G:11 ENE	WS: 9 G:12 NE	WS: 10 G:13 NE	WS: 10 G:13 NE	WS: 11 G:14 NE	WS: 11 G:14 NE	WS: 12 G:15 NE	WS: 12 G:15 NE	WS: 12 G:15 NE	WS: 12 G:15 NE	WS: 12 G:15 NE	WS: 12 G:15 NE	WS: 12 G:15 NE	WS: 12 G:15 NE	WS: 12 G:15 NE	WS: 12 G:15 NE	WS: 12 G:15 NE	WS: 12 G:15 NE	WS: 12 G:15 NE	WS: 12 G:15 NE	WS: 12 G:15 NE	WS: 12 G:15 NE	WS: 12 G:15 NE	WS: 11 G:13 ESE	WS: 11 G:13 ESE	WS: 11 G:13 ESE	WS: 11 G:13 ESE	
Houston Pilots A - 1 & 2 Bravo	WS: 16 G:17 ENE	WS: 15 G:17 NE	WS: 14 G:15 ESE	WS: 17 G:17 E	WS: 17 G:14 E	WS: 12 G:13 E	WS: 9 G:12 E	WS: 12 G:13 ESE	WS: 9 G:11 E	WS: 10 G:10 NE	WS: 7 G:9 ENE	WS: 12 G:14 ENE	WS: 13 G:16 ENE	WS: 14 G:17 ENE	WS: 15 G:18 ENE	WS: 9 G:12 NE	WS: 9 G:12 NE	WS: 10 G:13 NE	WS: 10 G:13 NE	WS: 11 G:14 NE	WS: 11 G:14 NE	WS: 12 G:15 NE	WS: 12 G:15 NE	WS: 12 G:15 NE	WS: 12 G:15 NE	WS: 12 G:15 NE	WS: 12 G:15 NE	WS: 12 G:15 NE	WS: 12 G:15 NE	WS: 12 G:15 NE	WS: 12 G:15 NE	WS: 12 G:15 NE	WS: 12 G:15 NE	WS: 12 G:15 NE	WS: 12 G:15 NE	WS: 12 G:15 NE	WS: 12 G:15 NE	WS: 12 G:15 NE	WS: 12 G:15 NE	WS: 11 G:13 ESE	WS: 11 G:13 ESE	WS: 11 G:13 ESE	WS: 11 G:13 ESE

See slides below for official thoughts on winds.

Houston Pilots: Fri. 8/12/2022



Forecast Discussion

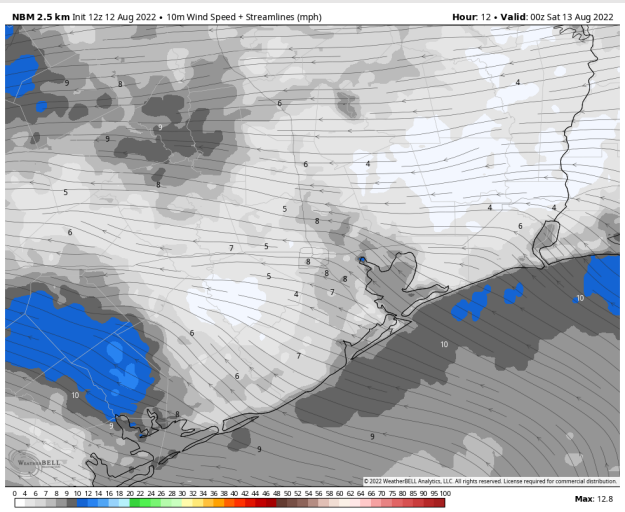
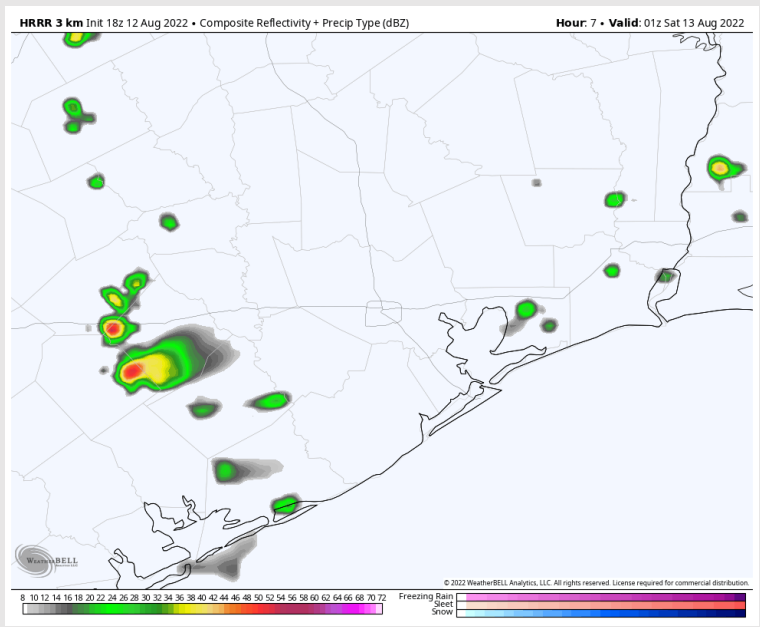
Precip: 30-40% chance of scattered showers/storms until 6PM. After 6PM and through the overnight, chances decrease to 10%. Gusty winds, lightning and locally heavy downpours expected with this storm.

Wind: Sustained winds out of the S/SE 8-13 MPH and continue into the overnight. Gusts of up to 20 MPH under stronger storms.

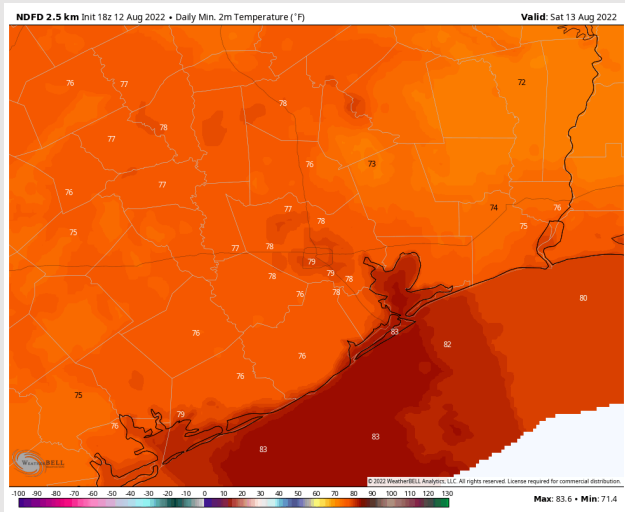
Temps: Low temps Saturday AM in the upper 70s F for most stations and in the low 80s F out near the boarding station.

Visibility: Not anticipating fog concerns at this time.

Precip Forecast: 8 PM CT



Wind Speed
7 PM CT



Low Temps
SAT AM

Houston Pilots: sat. 8/13/2022



Forecast Discussion

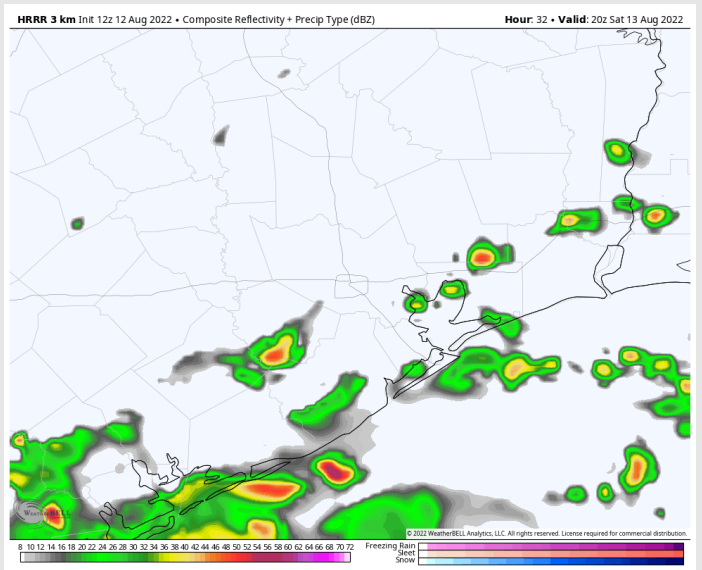
Precip: 60% coverage for scattered showers/storms before dawn tomorrow with a focus in the Gulf near the boarding station. Coverage increases to 40% after 10 AM for stations in Galveston Bay and Houston Metro. Chances lessen to 10-20% after 5PM and continue through the overnight. Gusty winds, locally heavy downpours and lightning may be possible under stronger cells.

Wind: Sustained winds out of the ESE at 3-8 MPH until 7AM. After 7AM, winds pick up 10-15 MPH veering out of the SE with gusts up to 18-20 MPH.

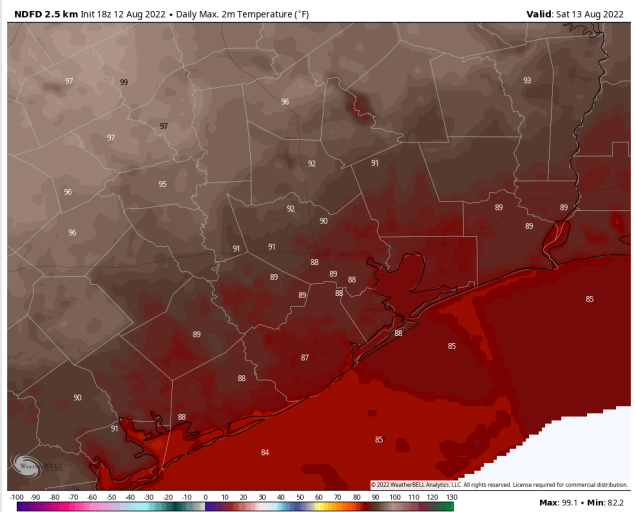
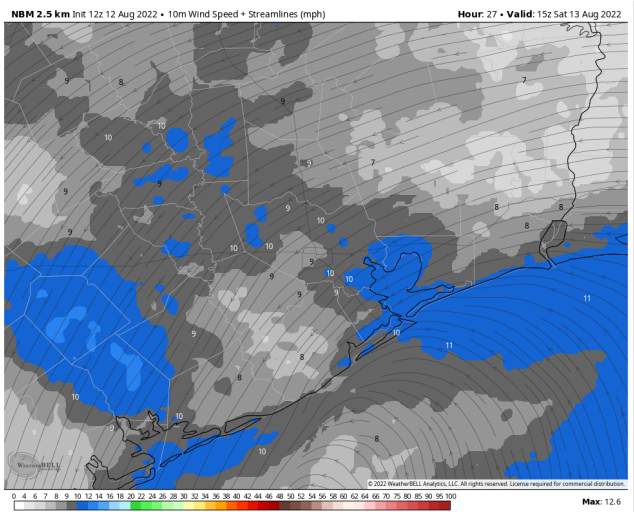
Temps: High temps Saturday in low to mid 90's for most stations with temps in the mid 80s F at the boarding station.

Visibility: Not anticipating fog concerns at this time.

Precip Forecast: 3 PM CT



Wind Speed
10 AM CT



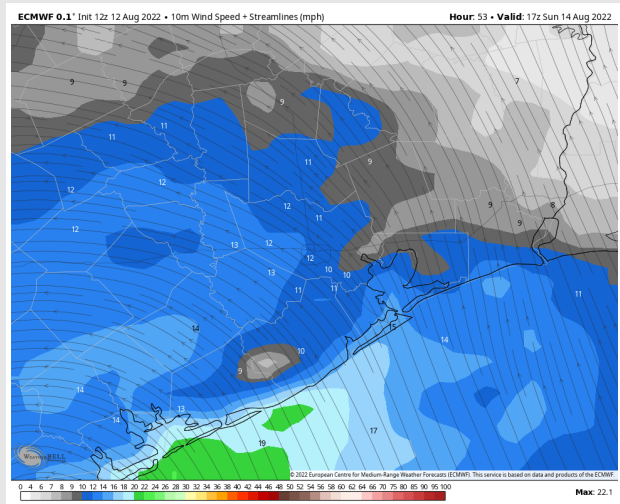
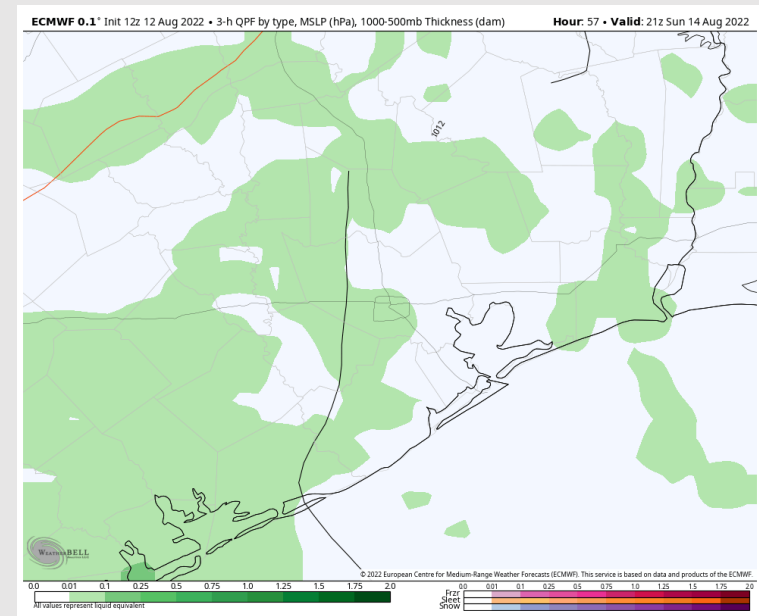
High Temps
Saturday

Houston Pilots: Sun. 8/14/2022

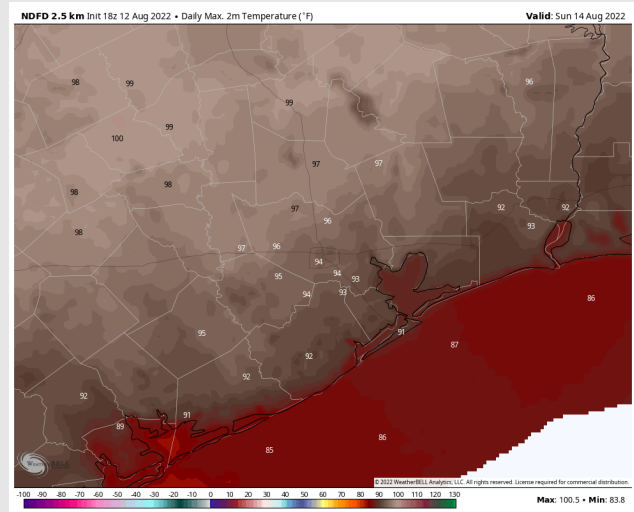
Forecast Discussion

- Precip:** Scattered showers/storms throughout the day Sunday with better chances E and SE of stations in the AM. Better chances for showers/storms will be north of Houston Metro in the PM.
- Wind:** Sustained winds out of the south at 10-15 MPH throughout the AM and PM Sunday. Winds north of Morgan's Point a bit calmer 3-8 MPH in the AM. Anticipating gusts up to 20 MPH to be possible.
- Temps:** High temps in the upper 80s F near the boarding station with temps in the low 90s F for all other stations.
- Visibility:** Not anticipating fog concerns at this time.

Precip Forecast: 4 PM CT

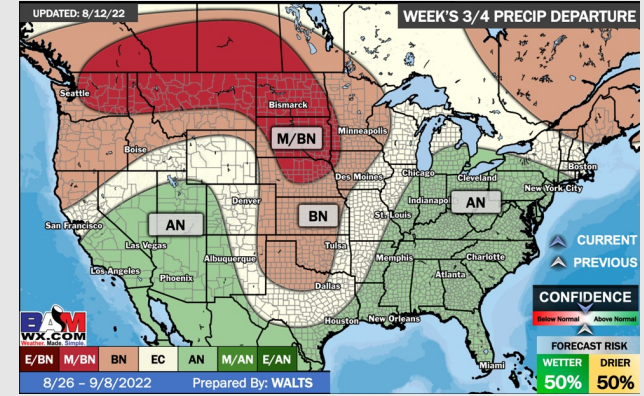
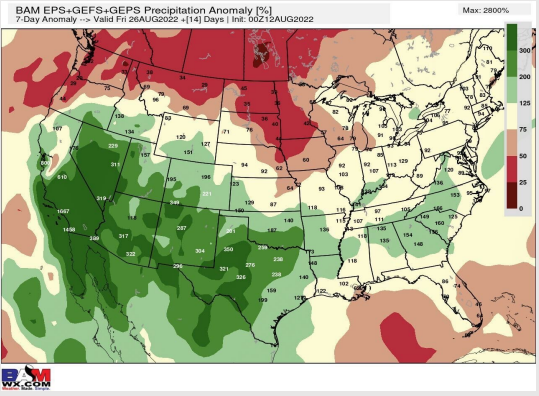
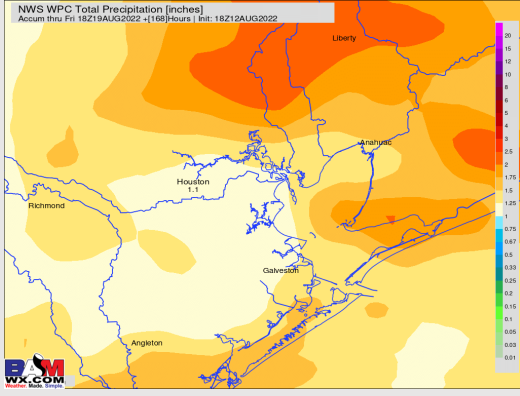
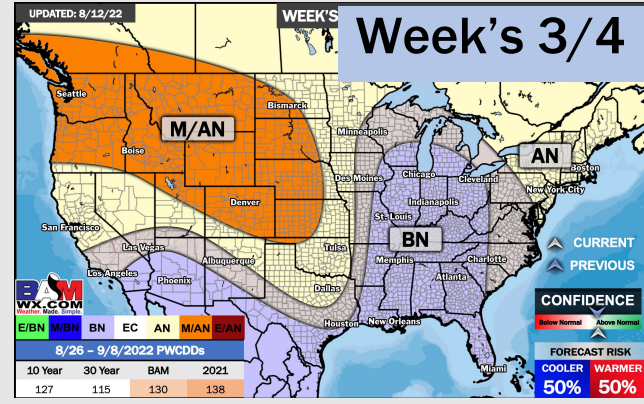
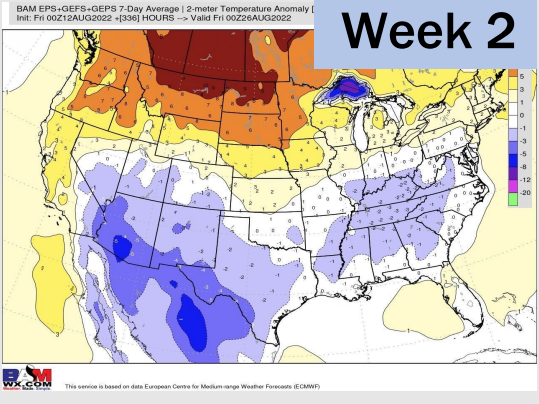
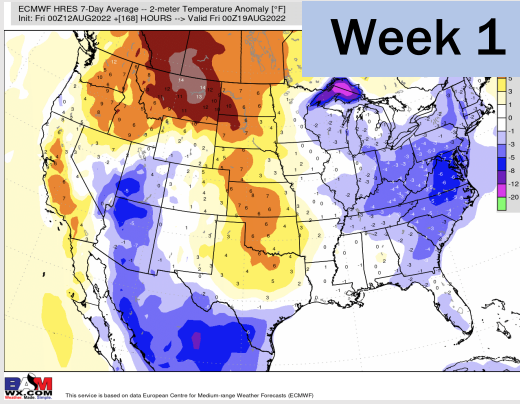


Wind Speed
12 PM CT



High Temps
Sunday

Houston Pilots: 8/12/22



- Temperatures expected to be normal this week. Daily storm chances over the next few days with better precip chances working in Saturday/Sunday.
- Week 2 likely features normal risks for temperatures and above normal risks for precipitation.
- The weeks 3/4 timeframe into early September looks to feature below normal temperatures and above normal risks for precip.