

Houston Pilots Forecast Package

Houston Pilots

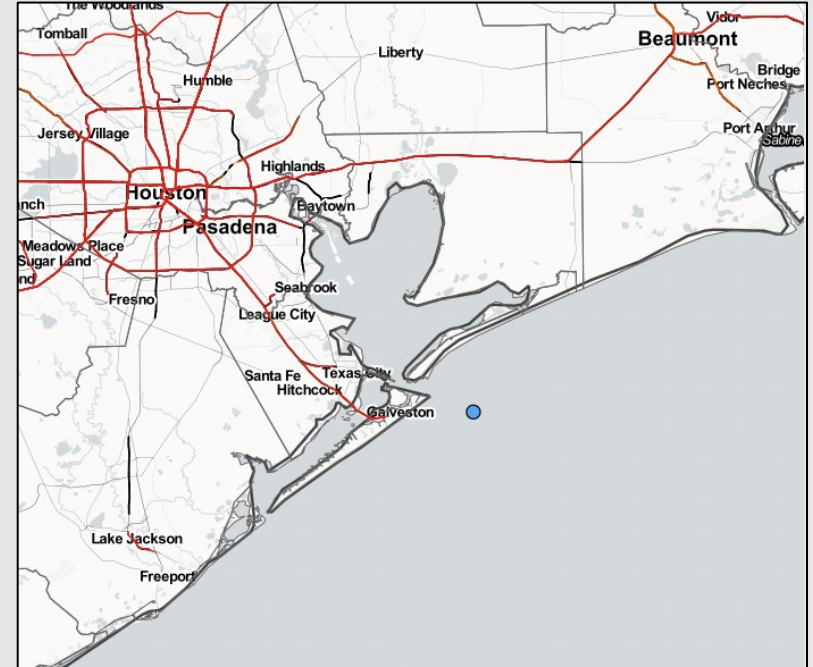
Updated: 5:00 AM CT

Tuesday, August 2, 2022

Forecaster: Kirk Hinz

Weather Headlines

- Isolated, hit and miss showers and thunderstorms will continue to be the theme moving forward. Chances will continue to be 20-30%, but ~Friday/Saturday look to have the best chances moving forward.
- Flow will stay predominately out of the South/ Southwest the next several days.
- Not favoring any tropical threats the next 7 days.

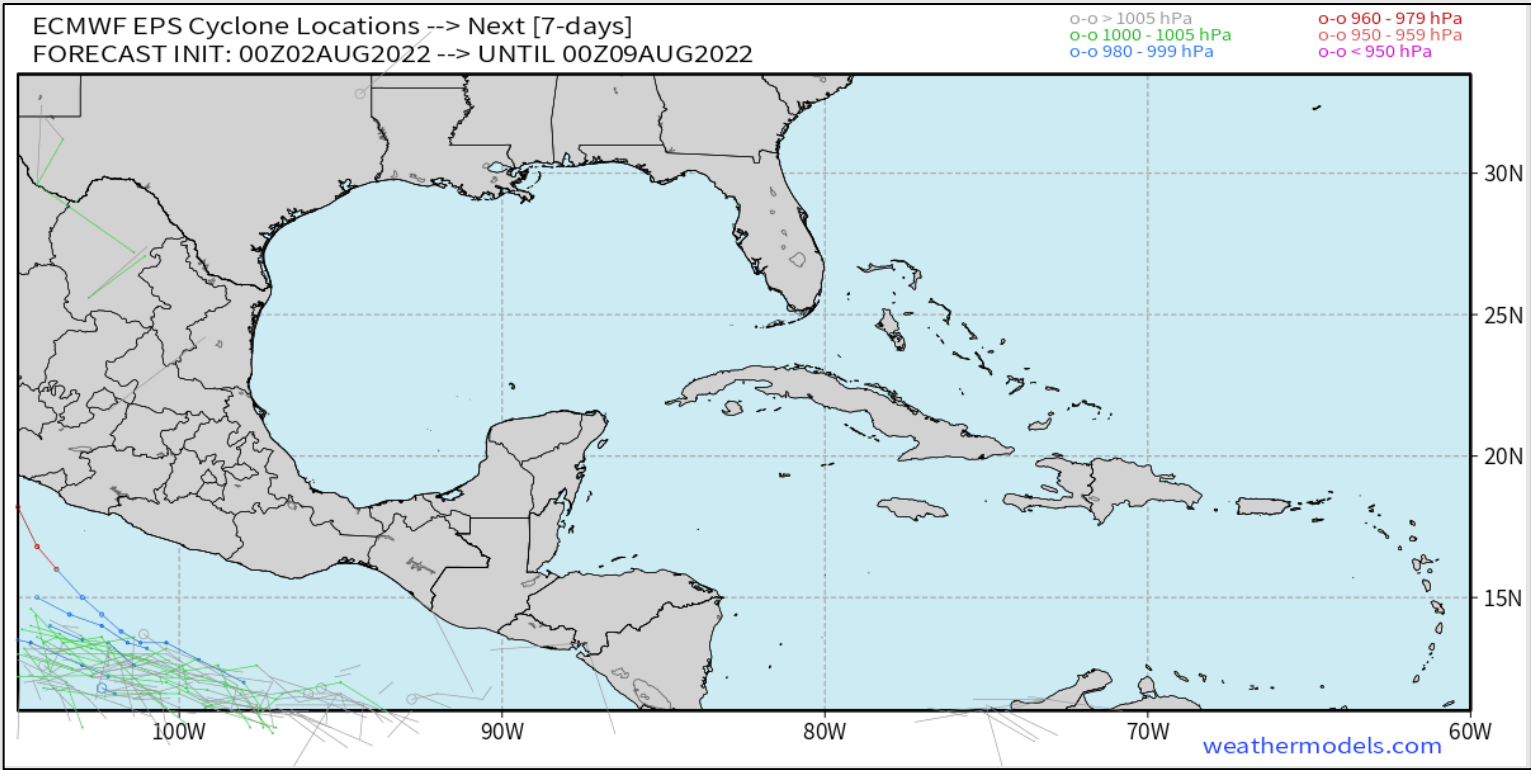


Radar/ NWS Alerts: 5:00 AM CT



As always, please do not hesitate to reach out to us with any forecast questions via the chat option on the Weather Porthole or our on-call number, **(317)-560-8122** press 1 for forecast questions.

Various model tracks next 7 days



Not favoring any impactful tropical threats the next 7 days.

Confidence

Above Normal Below Normal

Houston Pilots Wind Report



Example

Sustained wind 13 MPH
Gusts 18 MPH
Wind from the N

WS: 13
G:18
N

Time	08-02-2022 Tue 3am	08-02-2022 Tue 4am	08-02-2022 Tue 5am	08-02-2022 Tue 6am	08-02-2022 Tue 7am	08-02-2022 Tue 8am	08-02-2022 Tue 9am	08-02-2022 Tue 10am	08-02-2022 Tue 11am	08-02-2022 Tue 12pm	08-02-2022 Tue 1pm	08-02-2022 Tue 2pm	08-02-2022 Tue 3pm	08-02-2022 Tue 4pm	08-02-2022 Tue 5pm	08-02-2022 Tue 6pm	08-02-2022 Tue 7pm	08-02-2022 Tue 8pm	08-02-2022 Tue 9pm	08-02-2022 Tue 10pm	08-02-2022 Tue 11pm	08-02-2022 Tue 12am	08-03-2022 Wed 1am	08-03-2022 Wed 2am	08-03-2022 Wed 3am	08-03-2022 Wed 4am	08-03-2022 Wed 5am	08-03-2022 Wed 6am	08-03-2022 Wed 7am	08-03-2022 Wed 8am	08-03-2022 Wed 9am	08-03-2022 Wed 10am	08-03-2022 Wed 11am	08-03-2022 Wed 12pm	08-03-2022 Wed 1pm	08-03-2022 Wed 2pm				
Houston Pilots N - 610 Bridge	WS: 1 G:5 NE	WS: 1 G:6 ESE	WS: 0 G:7 SSE	WS: 2 G:8 SE	WS: 3 G:9 SSE	WS: 4 G:13 SSW	WS: 8 G:15 SSW	WS: 7 G:11 SW	WS: 6 G:9 SW	WS: 6 G:9 SSW	WS: 6 G:8 S	WS: 8 G:11 SSE	WS: 12 G:16 S	WS: 12 G:16 SSE	WS: 12 G:17 SSE	WS: 12 G:18 S	WS: 12 G:18 S	WS: 11 G:19 S	WS: 10 G:17 S	WS: 9 G:16 S	WS: 8 G:15 S	WS: 7 G:13 S	WS: 6 G:12 S	WS: 6 G:11 S	WS: 5 G:11 S	WS: 5 G:10 SSW	WS: 4 G:10 SSW	WS: 4 G:9 SSW	WS: 4 G:8 SSW	WS: 4 G:8 SSW	WS: 5 G:11 SSW	WS: 8 G:13 SSW	WS: 9 G:14 SSW	WS: 8 G:13 SSW	WS: 8 G:13 SSW	WS: 8 G:15 S	WS: 9 G:15 S	WS: 10 G:17 S		
Houston Pilots M - Kinder 1	WS: 1 G:5 NE	WS: 1 G:5 S	WS: 0 G:7 SW	WS: 2 G:9 SE	WS: 3 G:9 SSE	WS: 4 G:13 SSW	WS: 8 G:15 SSW	WS: 7 G:11 SW	WS: 6 G:9 SW	WS: 6 G:9 SSW	WS: 6 G:8 S	WS: 9 G:11 SSE	WS: 12 G:16 SSE	WS: 12 G:16 SSE	WS: 13 G:17 SSE	WS: 12 G:18 S	WS: 13 G:18 S	WS: 12 G:19 S	WS: 10 G:17 S	WS: 9 G:16 S	WS: 8 G:15 S	WS: 7 G:13 S	WS: 6 G:12 S	WS: 6 G:11 S	WS: 5 G:11 SSW	WS: 5 G:10 SSW	WS: 4 G:9 SSW	WS: 4 G:8 SSW	WS: 4 G:8 SSW	WS: 4 G:8 SSW	WS: 5 G:11 SSW	WS: 8 G:13 SSW	WS: 9 G:14 SSW	WS: 8 G:13 SSW	WS: 8 G:13 SSW	WS: 8 G:15 S	WS: 9 G:15 S	WS: 10 G:17 S		
Houston Pilots L - Greens Bayou	WS: 0 G:5 SSE	WS: 1 G:4 W	WS: 1 G:6 WNW	WS: 2 G:8 SE	WS: 2 G:10 S	WS: 4 G:14 SSW	WS: 8 G:14 SSW	WS: 7 G:11 SW	WS: 6 G:9 SW	WS: 6 G:8 SSW	WS: 6 G:9 SSW	WS: 6 G:8 S	WS: 11 G:14 SSE	WS: 12 G:16 SSE	WS: 13 G:16 SSE	WS: 13 G:17 SSE	WS: 13 G:18 S	WS: 13 G:18 S	WS: 12 G:19 S	WS: 10 G:17 S	WS: 9 G:16 S	WS: 8 G:15 S	WS: 7 G:13 S	WS: 6 G:12 S	WS: 6 G:11 S	WS: 5 G:11 SSW	WS: 4 G:10 SSW	WS: 4 G:9 SSW	WS: 4 G:8 SSW	WS: 4 G:8 SSW	WS: 5 G:11 SSW	WS: 9 G:13 SSW	WS: 10 G:14 SSW	WS: 9 G:13 SSW	WS: 9 G:13 SSW	WS: 8 G:13 SSW	WS: 8 G:14 S	WS: 11 G:17 S		
Houston Pilots K - Shell Crane	WS: 1 G:7 S	WS: 1 G:6 NW	WS: 1 G:6 NW	WS: 1 G:9 SSE	WS: 2 G:11 S	WS: 5 G:14 SSW	WS: 8 G:14 SSW	WS: 7 G:11 SW	WS: 6 G:9 SSW	WS: 6 G:8 SSW	WS: 6 G:8 SSW	WS: 7 G:10 SSE	WS: 12 G:16 SSE	WS: 13 G:16 SSE	WS: 13 G:17 SSE	WS: 13 G:18 S	WS: 13 G:18 S	WS: 12 G:19 S	WS: 10 G:17 S	WS: 9 G:16 S	WS: 8 G:15 S	WS: 7 G:14 S	WS: 6 G:12 S	WS: 6 G:12 S	WS: 5 G:11 SSW	WS: 5 G:10 SSW	WS: 4 G:9 SSW	WS: 4 G:8 SSW	WS: 4 G:8 SSW	WS: 5 G:11 SSW	WS: 9 G:13 SSW	WS: 10 G:14 SSW	WS: 9 G:13 SSW	WS: 9 G:13 SSW	WS: 8 G:13 SSW	WS: 8 G:14 S	WS: 10 G:17 S			
Houston Pilots J - Lynchburg Ferries	WS: 1 G:10 WSW	WS: 1 G:7 WNW	WS: 1 G:9 WNW	WS: 2 G:11 SSW	WS: 2 G:11 SSW	WS: 5 G:14 SSW	WS: 8 G:14 SSW	WS: 7 G:11 SW	WS: 6 G:9 SSW	WS: 5 G:8 SSW	WS: 5 G:8 SSW	WS: 5 G:8 SSW	WS: 13 G:17 SSE	WS: 13 G:17 SSE	WS: 13 G:18 SSE	WS: 13 G:18 SSE	WS: 14 G:19 S	WS: 14 G:18 S	WS: 12 G:18 S	WS: 11 G:17 S	WS: 10 G:16 S	WS: 9 G:15 S	WS: 8 G:14 S	WS: 7 G:13 SSW	WS: 7 G:12 SSW	WS: 5 G:11 SSW	WS: 5 G:10 SSW	WS: 4 G:9 SSW	WS: 4 G:8 SSW	WS: 4 G:8 SSW	WS: 5 G:11 SSW	WS: 9 G:13 SSW	WS: 10 G:14 SSW	WS: 9 G:13 SSW	WS: 9 G:13 SSW	WS: 9 G:14 S	WS: 10 G:14 S	WS: 12 G:17 SSE		
Houston Pilots I - Exxon 3	WS: 4 G:15 SW	WS: 3 G:13 W	WS: 3 G:11 W	WS: 3 G:13 W	WS: 3 G:13 W	WS: 6 G:15 SSW	WS: 8 G:14 SSW	WS: 7 G:10 SSW	WS: 6 G:9 SSW	WS: 6 G:9 S	WS: 7 G:9 S	WS: 12 G:15 SSE	WS: 14 G:18 SSE	WS: 14 G:18 SSE	WS: 14 G:19 SSE	WS: 14 G:18 SSE	WS: 15 G:19 S	WS: 15 G:19 S	WS: 13 G:18 S	WS: 11 G:18 S	WS: 10 G:16 S	WS: 9 G:15 S	WS: 8 G:15 S	WS: 8 G:14 S	WS: 7 G:14 SSW	WS: 7 G:14 SSW	WS: 6 G:13 SSW	WS: 6 G:12 SSW	WS: 5 G:11 SSW	WS: 5 G:10 SSW	WS: 5 G:10 SSW	WS: 6 G:12 SSW	WS: 9 G:13 SSW	WS: 10 G:14 SSW	WS: 10 G:13 SSW	WS: 10 G:13 SSW	WS: 10 G:14 S	WS: 12 G:15 SSE	WS: 13 G:17 SSE	
Houston Pilots H - Morgans Point	WS: 8 G:18 SSW	WS: 7 G:16 SW	WS: 6 G:15 WSW	WS: 6 G:15 SW	WS: 6 G:15 SW	WS: 7 G:15 SSW	WS: 9 G:14 SSW	WS: 7 G:11 SSW	WS: 6 G:9 SSW	WS: 8 G:10 SSE	WS: 8 G:10 SSE	WS: 14 G:17 SSE	WS: 16 G:19 SSE	WS: 16 G:19 SSE	WS: 16 G:19 SSE	WS: 15 G:19 S	WS: 15 G:19 S	WS: 15 G:19 S	WS: 12 G:18 S	WS: 11 G:17 S	WS: 11 G:17 S	WS: 10 G:16 S	WS: 9 G:16 S	WS: 9 G:16 S	WS: 9 G:15 SSW	WS: 9 G:15 SSW	WS: 8 G:14 SSW	WS: 8 G:14 SSW	WS: 7 G:13 SSW	WS: 7 G:13 SSW	WS: 7 G:13 SSW	WS: 9 G:14 SSW	WS: 10 G:14 SSW	WS: 10 G:13 SSW	WS: 10 G:13 SSW	WS: 11 G:14 S	WS: 12 G:16 SSE	WS: 14 G:17 SSE		
Houston Pilots G - 75/76	WS: 13 G:19 S	WS: 12 G:17 SSW	WS: 11 G:16 SSW	WS: 11 G:16 SSW	WS: 10 G:15 SW	WS: 10 G:14 SSW	WS: 11 G:15 SSW	WS: 11 G:15 SW	WS: 8 G:11 SW	WS: 5 G:9 S	WS: 8 G:10 SE	WS: 16 G:17 SSE	WS: 18 G:19 SSE	WS: 18 G:20 SSE	WS: 18 G:20 SSE	WS: 17 G:19 S	WS: 15 G:19 S	WS: 15 G:19 S	WS: 14 G:19 S	WS: 14 G:19 S	WS: 13 G:19 S	WS: 13 G:18 S	WS: 12 G:18 SSW	WS: 12 G:18 SSW	WS: 11 G:17 SSW	WS: 11 G:17 SSW	WS: 11 G:17 SSW	WS: 10 G:16 SSW	WS: 9 G:16 SSW	WS: 9 G:16 SSW	WS: 9 G:16 SSW	WS: 10 G:14 SSW	WS: 10 G:14 SSW	WS: 10 G:14 SSW	WS: 10 G:14 S	WS: 11 G:14 S	WS: 11 G:14 S	WS: 14 G:17 SSE		
Houston Pilots F - 63/64	WS: 16 G:20 S	WS: 14 G:18 S	WS: 13 G:16 SSW	WS: 12 G:16 SSW	WS: 11 G:15 SSW	WS: 10 G:14 SSW	WS: 11 G:14 SW	WS: 8 G:11 SW	WS: 6 G:10 SSW	WS: 9 G:10 SSE	WS: 16 G:16 SSE	WS: 17 G:18 SSE	WS: 18 G:20 SSE	WS: 18 G:20 SSE	WS: 18 G:20 SSE	WS: 15 G:19 S	WS: 15 G:19 S	WS: 15 G:19 S	WS: 14 G:19 S	WS: 14 G:19 S	WS: 14 G:19 S	WS: 14 G:19 S	WS: 13 G:19 S	WS: 13 G:18 SSW	WS: 12 G:18 SSW	WS: 12 G:18 SSW	WS: 11 G:18 SSW	WS: 11 G:17 SSW	WS: 10 G:16 SSW	WS: 10 G:16 SSW	WS: 10 G:16 SSW	WS: 10 G:16 SSW	WS: 10 G:16 SSW	WS: 10 G:16 SSW	WS: 11 G:15 SSW	WS: 12 G:15 S	WS: 13 G:16 S	WS: 14 G:17 S		
Houston Pilots E - 51/52	WS: 17 G:20 S	WS: 15 G:18 S	WS: 13 G:16 SSW	WS: 13 G:16 SSW	WS: 12 G:15 SSW	WS: 10 G:14 SSW	WS: 11 G:14 SW	WS: 9 G:11 SSW	WS: 9 G:10 S	WS: 12 G:12 SSE	WS: 15 G:16 SSE	WS: 16 G:16 SSE	WS: 17 G:18 SSE	WS: 18 G:20 SSE	WS: 18 G:20 SSE	WS: 15 G:19 S	WS: 15 G:19 S	WS: 15 G:19 S	WS: 14 G:19 S	WS: 14 G:19 S	WS: 14 G:19 S	WS: 14 G:19 S	WS: 14 G:19 S	WS: 13 G:19 S	WS: 13 G:18 SSW	WS: 13 G:18 SSW	WS: 13 G:18 SSW	WS: 12 G:18 SSW	WS: 12 G:17 SSW	WS: 11 G:16 SSW	WS: 11 G:16 SSW	WS: 11 G:16 SSW	WS: 11 G:16 SSW	WS: 11 G:16 SSW	WS: 11 G:16 SSW	WS: 12 G:15 S	WS: 13 G:16 S	WS: 14 G:17 S		
Houston Pilots D - 37/38	WS: 16 G:20 S	WS: 15 G:18 S	WS: 14 G:16 SSW	WS: 13 G:15 SSW	WS: 12 G:14 SSW	WS: 11 G:13 SSW	WS: 12 G:14 SSW	WS: 11 G:12 SSW	WS: 10 G:11 SSW	WS: 10 G:11 S	WS: 12 G:13 S	WS: 15 G:16 SSE	WS: 17 G:18 SSE	WS: 18 G:19 SSE	WS: 18 G:19 SSE	WS: 15 G:18 S	WS: 15 G:18 S	WS: 15 G:18 S	WS: 15 G:18 S	WS: 15 G:18 S	WS: 15 G:18 S	WS: 15 G:18 S	WS: 15 G:18 S	WS: 15 G:18 S	WS: 14 G:18 S	WS: 14 G:18 S	WS: 14 G:18 S	WS: 14 G:18 S	WS: 13 G:17 SSW	WS: 12 G:17 SSW	WS: 12 G:17 SSW	WS: 12 G:17 SSW	WS: 12 G:17 SSW	WS: 12 G:17 SSW	WS: 12 G:17 SSW	WS: 12 G:17 SSW	WS: 13 G:18 S	WS: 13 G:18 S	WS: 14 G:19 S	
Houston Pilots C - 25/26	WS: 15 G:20 S	WS: 14 G:18 S	WS: 12 G:16 SSW	WS: 11 G:15 SSW	WS: 11 G:14 SSW	WS: 10 G:13 SSW	WS: 12 G:14 SSW	WS: 10 G:12 SSW	WS: 10 G:12 S	WS: 12 G:13 S	WS: 14 G:15 SSE	WS: 15 G:16 SSE	WS: 16 G:18 SSE	WS: 16 G:18 SSE	WS: 16 G:18 SSE	WS: 15 G:18 S	WS: 15 G:18 S	WS: 14 G:18 S	WS: 14 G:18 S	WS: 14 G:18 S	WS: 14 G:18 S	WS: 14 G:18 S	WS: 14 G:18 S	WS: 15 G:19 S	WS: 15 G:19 S	WS: 14 G:18 S	WS: 14 G:18 S	WS: 14 G:18 S	WS: 13 G:18 S	WS: 13 G:17 SSW	WS: 12 G:17 SSW	WS: 12 G:17 SSW	WS: 12 G:17 SSW	WS: 12 G:17 SSW	WS: 12 G:17 SSW	WS: 12 G:17 SSW	WS: 13 G:18 S	WS: 13 G:18 S	WS: 14 G:19 S	
Houston Pilots B - 11/12	WS: 16 G:20 S	WS: 14 G:18 S	WS: 13 G:17 SSW	WS: 12 G:16 SSW	WS: 11 G:15 SSW	WS: 10 G:14 SSW	WS: 12 G:14 SSW	WS: 11 G:12 SSW	WS: 11 G:12 S	WS: 12 G:13 S	WS: 14 G:15 SSE	WS: 15 G:16 SSE	WS: 16 G:18 SSE	WS: 16 G:18 SSE	WS: 14 G:18 S	WS: 14 G:18 S	WS: 14 G:18 S	WS: 14 G:18 S	WS: 14 G:18 S	WS: 14 G:18 S	WS: 14 G:18 S	WS: 15 G:19 S	WS: 15 G:19 S	WS: 15 G:19 S	WS: 15 G:19 S	WS: 15 G:19 S	WS: 14 G:18 S	WS: 14 G:18 S	WS: 14 G:18 S	WS: 14 G:18 S	WS: 13 G:17 SSW	WS: 13 G:17 SSW	WS: 13 G:17 SSW	WS: 13 G:17 SSW	WS: 13 G:17 SSW	WS: 13 G:17 SSW	WS: 13 G:17 SSW	WS: 13 G:17 SSW	WS: 14 G:18 S	WS: 14 G:18 S
Houston Pilots A - 1 & 2 Bravo	WS: 19 G:20 S	WS: 17 G:19 S	WS: 16 G:17 SSW	WS: 15 G:16 SSW	WS: 14 G:15 SSW	WS: 13 G:14 SSW	WS: 14 G:14 SSW	WS: 12 G:12 SSW	WS: 11 G:12 S	WS: 12 G:12 S	WS: 14 G:14 S	WS: 13 G:14 S	WS: 13 G:14 S	WS: 16 G:16 S	WS: 16 G:17 S	WS: 14 G:17 S	WS: 15 G:18 S	WS: 15 G:18 S	WS: 15 G:18 S	WS: 15 G:18 S	WS: 16 G:19 S	WS: 16 G:19 S	WS: 16 G:19 S	WS: 17 G:19 S	WS: 17 G:19 S	WS: 16 G:19 S	WS: 16 G:19 S	WS: 16 G:19 S	WS: 16 G:19 S	WS: 15 G:18 S	WS: 15 G:18 S	WS: 15 G:18 S	WS: 15 G:18 S	WS: 15 G:18 S	WS: 15 G:18 S	WS: 15 G:18 S	WS: 15 G:18 S	WS: 15 G:18 S	WS: 13 G:17 S	WS: 13 G:17 S

See slides below for official thoughts on winds.

Houston Pilots: Tue. 8/2/2022

Forecast Discussion

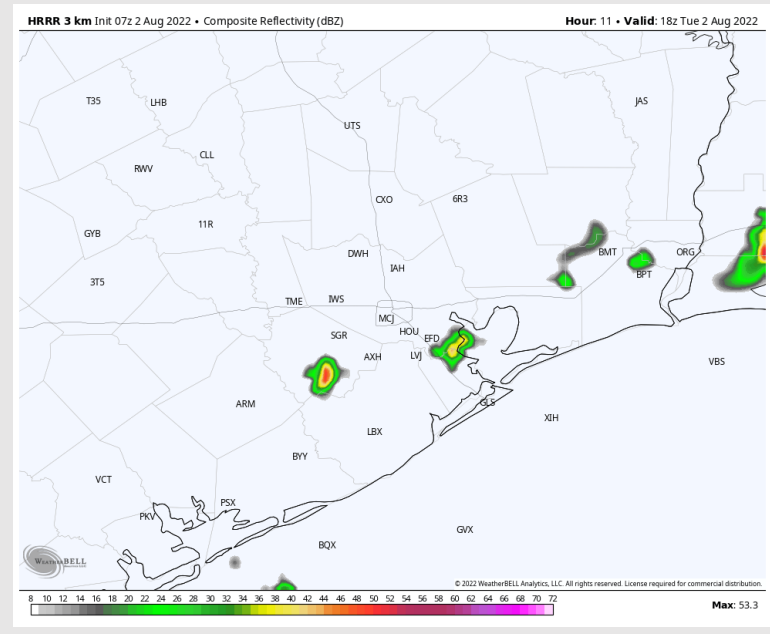
Precip: Rainfall coverage today has lessened vs what was anticipated yesterday. Right now we have ~10/20% chance of a shower 6AM – 12PM, and a 20/30% opportunity for a shower/t'storm from 12 – 6PM. Lightning and locally heavy downpours possible under stronger cells.

Wind: Sustained winds this morning will be 8-13 MPH out of the SSW with winds north of Morgan's Point calmer. Winds slowly increase after 12/1 PM to 10-15 MPH mid afternoon to evening veering from the South (locally 13-18 MPH sustained possible across locations near Station 51/52). Gusts of 20-25 MPH possible under stronger storms.

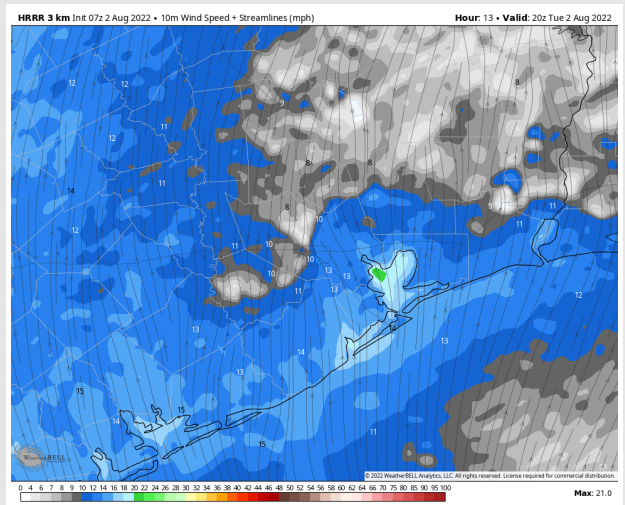
Temps: High temps today in the mid to upper 90s F for most stations. Temps near boarding station closer to the upper 80s F.

Visibility: Not anticipating fog concerns at the time, however, visibility may be reduced under strongest storms.

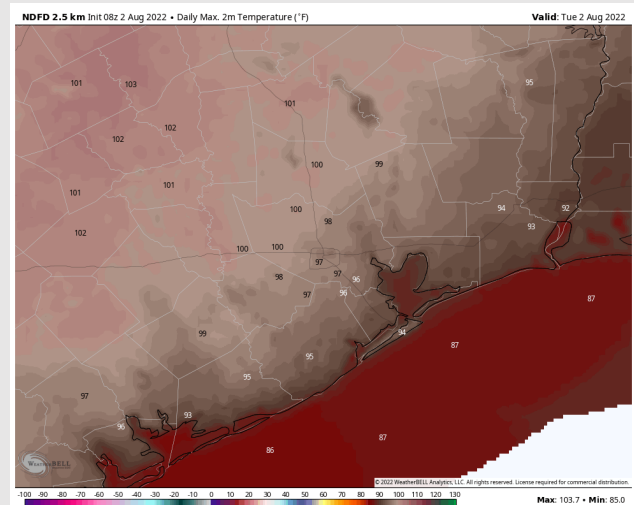
Precip Forecast: 1 PM CT



Wind Speed
3 PM CT



High Temps
Today



Houston Pilots: Wed. 8/3/2022



Forecast Discussion

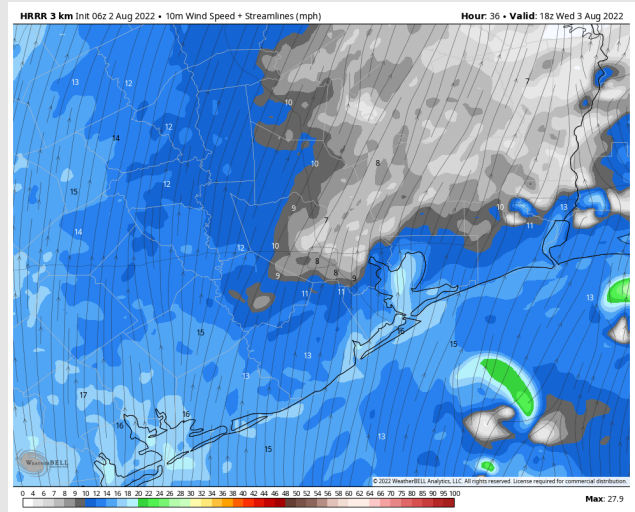
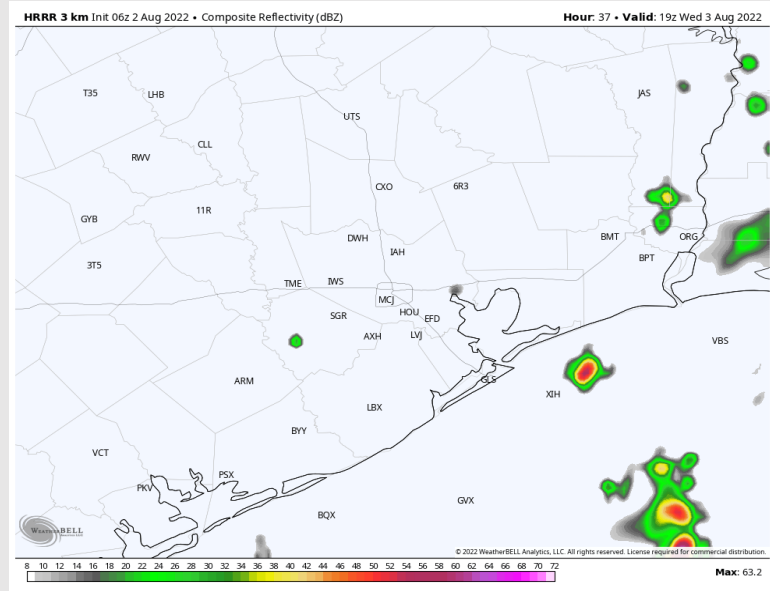
Precip: Chances for rain Wednesday, at this distance, looks very similar to Tuesday: 10/20% chance 6AM – 12PM, increasing to 20/30% chances 12 – 6PM. Lightning and locally heavy downpours possible under stronger cells.

Wind: Sustained winds Wednesday morning will be 8-13 MPH out of the SSW. Winds slowly increase after 12/1 PM to 10-15 MPH mid afternoon to evening veering from the South (locally 13-18 MPH sustained possible across locations near Station 51/52). Gusts of 20-25 MPH possible under stronger storms.

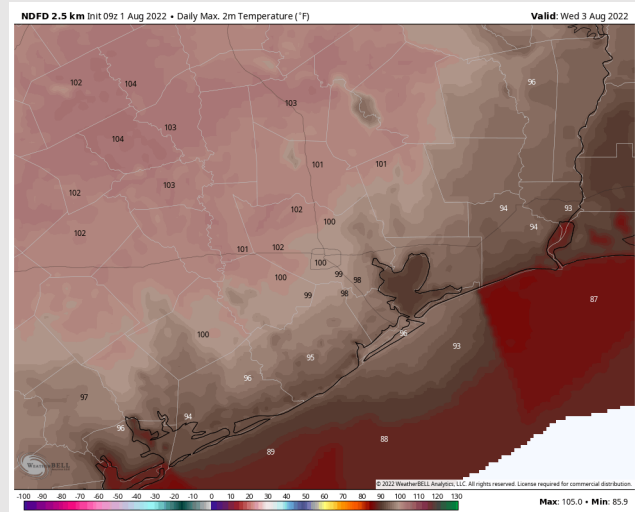
Temps: High temps Wednesday in the upper 90s F for most stations. Highs in the upper 80s F near boarding station.

Visibility: Not anticipating fog concerns at this time.

Precip Forecast: 2 PM CT



Wind Speed
1 PM CT



High Temps
Wednesday

Houston Pilots: Thur. 8/4/2022



Forecast Discussion

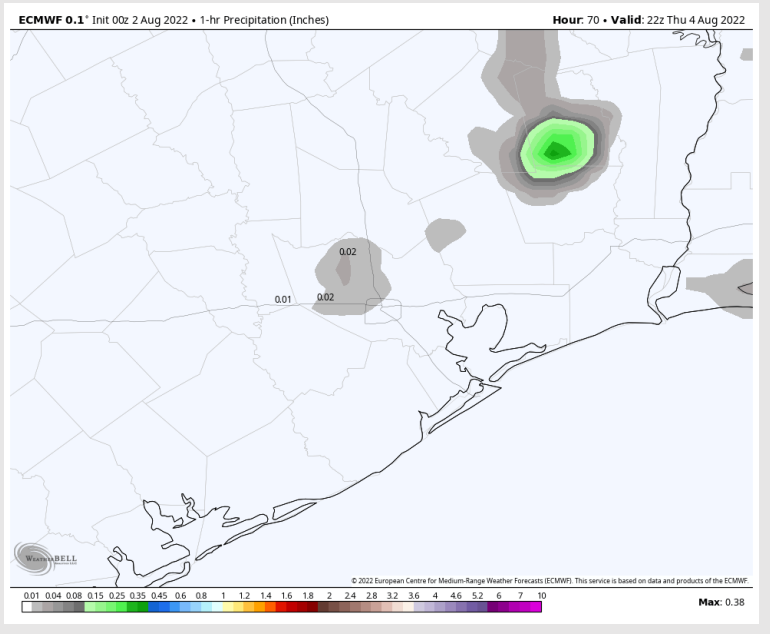
Precip: Similar to Tuesday / Wednesday, the morning hours through about noon look overall dry with just a very isolated rainfall threat. 12– 6PM right now will also see ~20/30% chance for a shower / t'storm. Our next bigger precipitation chance increases later Friday morning into afternoon.

Wind: Sustained winds Thursday morning will be 8-13 MPH out of the SSW. Winds slowly increase after 12/1 PM to 13-18 MPH mid afternoon to evening veering from the South (locally 15-20 MPH sustained possible across locations near Station 51/52). Gusts of 20-25 MPH possible under stronger storms.

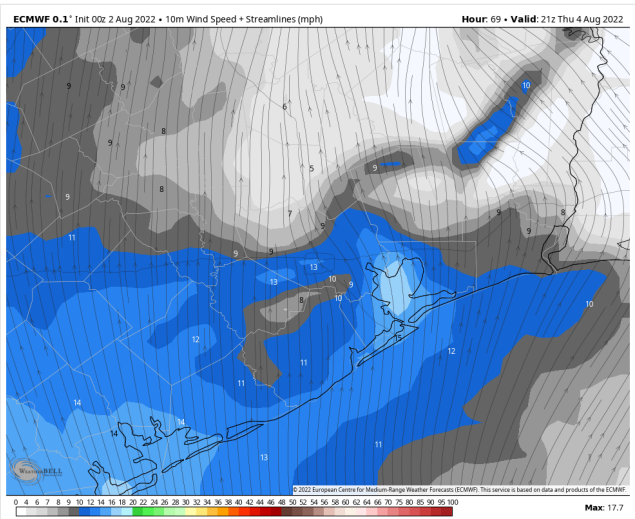
Temps: High temps Thursday in the upper 90s F for most stations. Highs in the upper 80s F near boarding station.

Visibility: No fog is expected into the overnight hours.

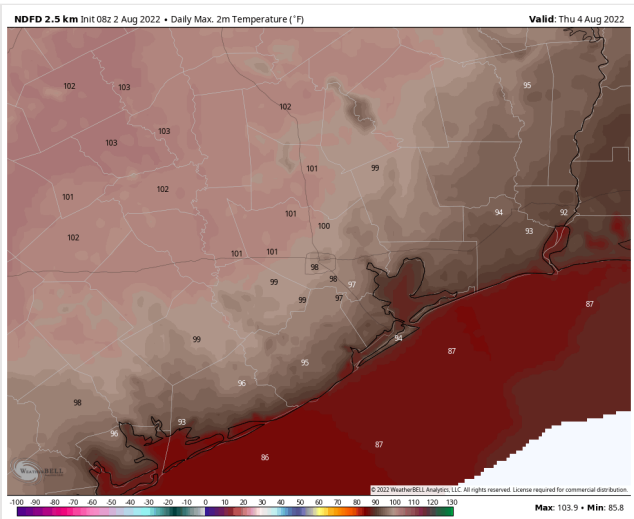
Precip Forecast: 5 PM CT



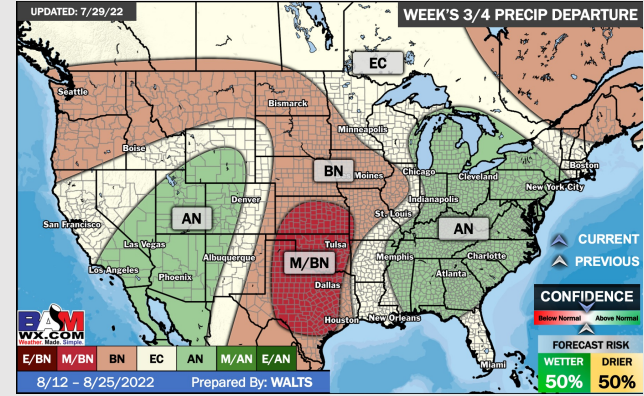
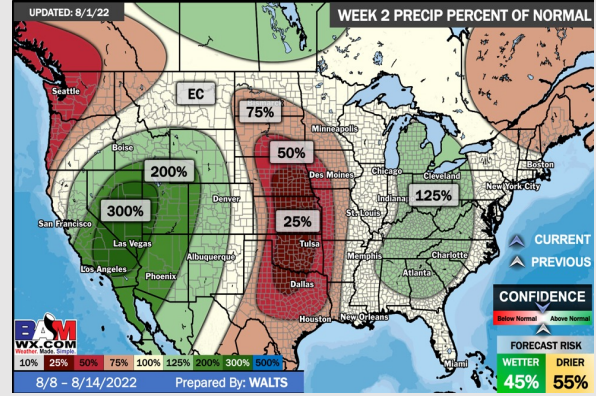
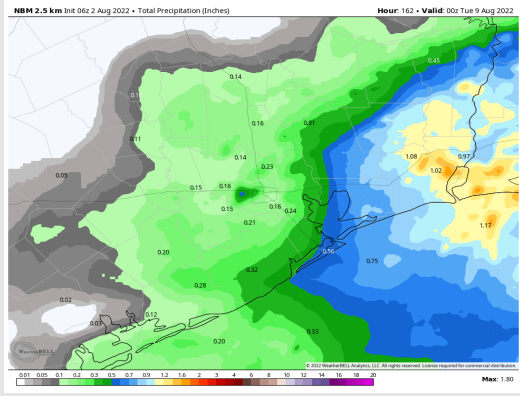
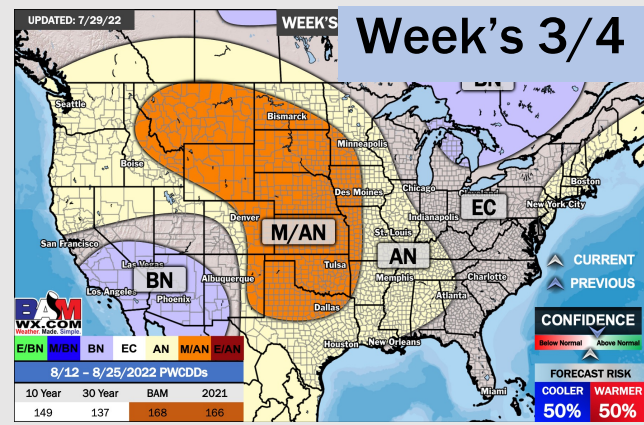
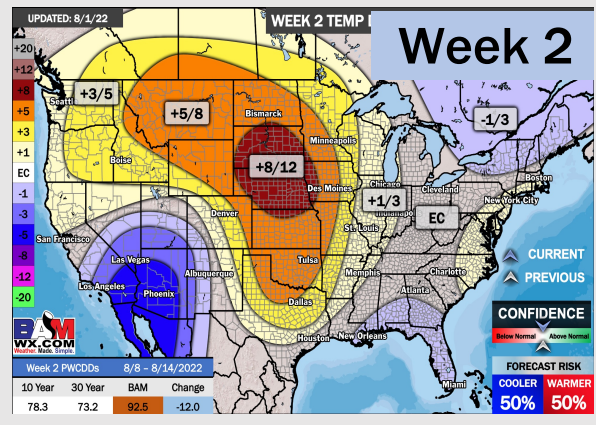
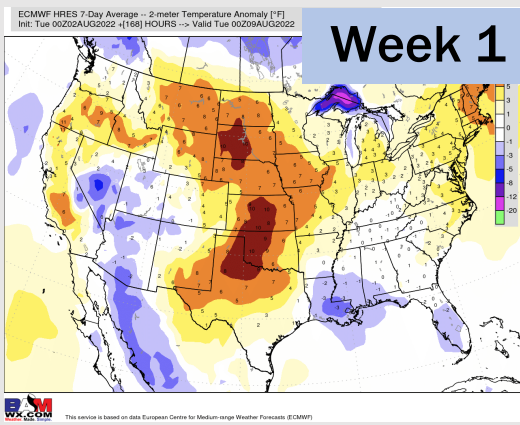
Wind Gusts
4 PM CT



High Temps
THUR



Houston Pilots: 8/2/22



- Temperatures expected to be slightly above normal this week. Daily, scattered chances for precipitation will be possible over the next few days, but not widespread heavy threats at this time...more frequent precipitation chances look to increase Friday into the weekend.
- Week 2 likely features normal risks for temperatures and below normal precipitation risks.
- The weeks 3/4 timeframe into mid-August looks to feature above normal temperatures and below normal risks for precip.