

Houston Pilots Forecast Package



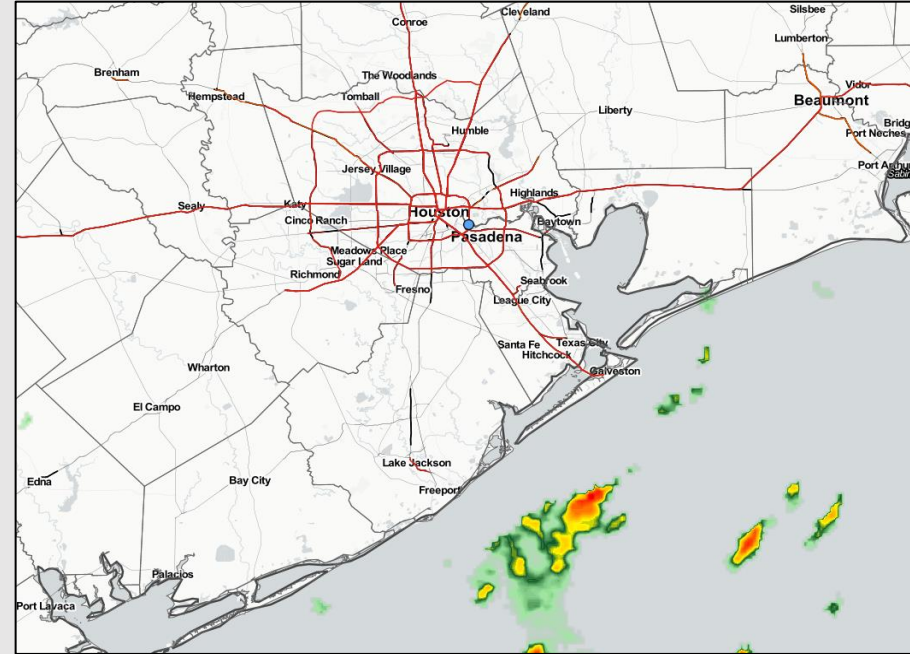
Updated: 4:45 AM CT

Thursday, August 11, 2022

Forecaster: Jonathan Kipper

Weather Headlines

- Scattered showers and thunderstorm chances will continue through Sat.
- Flow (winds) will stay predominately out of the South/ Southeast the next several days.
- Not favoring any tropical threats over the next 7 Days.

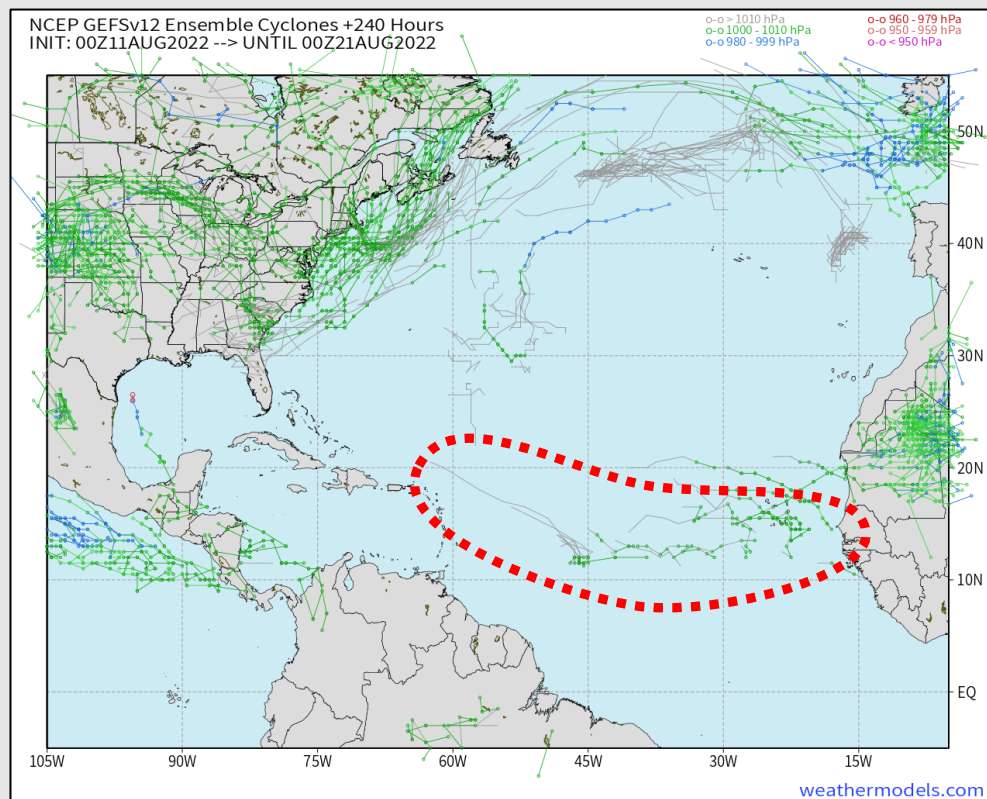


Radar/ NWS Alerts: 4:45 AM CT



As always, please do not hesitate to reach out to us with any forecast questions via the chat option on the Weather Porthole or our on-call number, **(317)-560-8122** press 1 for forecast questions.

Various model tracks next 10 days



Keeping an eye on the Atlantic as upward motion in the atmosphere moves through and may allow for mid-late August to be a bit more active. The area outlined in red is a potential track to watch of a loosely organized pocket of precipitation in the E Atlantic that could develop into an organized system. With that said, no impacts are favored for SE TX for at least the next 7-10+ days.

Confidence

Above
Normal

Below
Normal

Houston Pilots Visibility Report



Time	08-11-2022 Thu 3am	08-11-2022 Thu 4am	08-11-2022 Thu 5am	08-11-2022 Thu 6am	08-11-2022 Thu 7am	08-11-2022 Thu 8am	08-11-2022 Thu 9am	08-11-2022 Thu 10am	08-11-2022 Thu 11am	08-11-2022 Thu 12pm	08-11-2022 Thu 1pm	08-11-2022 Thu 2pm	08-11-2022 Thu 3pm	08-11-2022 Thu 4pm	08-11-2022 Thu 5pm	08-11-2022 Thu 6pm	08-11-2022 Thu 7pm	08-11-2022 Thu 8pm	08-11-2022 Thu 9pm	08-11-2022 Thu 10pm	08-11-2022 Thu 11pm	08-12-2022 Fri 12am	08-12-2022 Fri 1am	08-12-2022 Fri 2am	08-12-2022 Fri 3am	08-12-2022 Fri 4am	08-12-2022 Fri 5am	08-12-2022 Fri 6am	08-12-2022 Fri 7am	08-12-2022 Fri 8am	08-12-2022 Fri 9am	08-12-2022 Fri 10am	08-12-2022 Fri 11am	08-12-2022 Fri 12pm	08-12-2022 Fri 1pm	08-12-2022 Fri 2pm
Houston Pilots N - 610 Bridge	10.000	7.924	7.655	10.000	6.935	10.000	10.000	10.000	10.000	10.000	10.000	10.000	10.000	10.000	10.000	10.000	10.000	10.000	10.000	10.000	10.000	10.000	10.000	10.000	10.000	10.000	10.000	10.000	8.988	10.000	10.000	10.000	10.000	10.000	10.000	10.000
Houston Pilots M - Kinder 1	10.000	7.924	7.924	10.000	6.935	10.000	10.000	10.000	10.000	10.000	10.000	10.000	10.000	10.000	10.000	10.000	10.000	10.000	10.000	10.000	10.000	10.000	10.000	10.000	10.000	10.000	10.000	10.000	8.988	10.000	10.000	10.000	10.000	10.000	10.000	10.000
Houston Pilots L - Greens Bayou	10.000	8.622	7.924	10.000	6.923	10.000	10.000	10.000	10.000	10.000	10.000	10.000	10.000	10.000	10.000	10.000	10.000	10.000	10.000	10.000	10.000	10.000	10.000	10.000	10.000	10.000	10.000	10.000	8.988	10.000	10.000	10.000	10.000	10.000	10.000	10.000
Houston Pilots K - Shell Crude	10.000	9.170	9.136	10.000	8.194	10.000	10.000	10.000	10.000	10.000	10.000	10.000	10.000	10.000	10.000	10.000	10.000	10.000	10.000	10.000	10.000	10.000	10.000	10.000	10.000	10.000	10.000	10.000	8.988	10.000	10.000	10.000	10.000	10.000	10.000	10.000
Houston Pilots J - Lynchburg Ferries	10.000	9.136	9.136	10.000	8.194	10.000	10.000	10.000	10.000	10.000	10.000	10.000	10.000	10.000	10.000	10.000	10.000	10.000	10.000	10.000	10.000	10.000	10.000	10.000	10.000	10.000	10.000	10.000	8.988	10.000	10.000	10.000	10.000	10.000	10.000	10.000
Houston Pilots I - Exxon 3	10.000	10.000	10.000	10.000	10.000	10.000	10.000	10.000	10.000	10.000	10.000	10.000	10.000	10.000	10.000	10.000	10.000	10.000	10.000	10.000	10.000	10.000	10.000	10.000	10.000	10.000	10.000	10.000	9.862	10.000	10.000	10.000	10.000	10.000	10.000	10.000
Houston Pilots H - Morgans Point	10.000	10.000	10.000	10.000	10.000	10.000	10.000	10.000	10.000	10.000	10.000	10.000	10.000	10.000	10.000	10.000	10.000	10.000	10.000	10.000	10.000	10.000	10.000	10.000	10.000	10.000	10.000	10.000	9.862	10.000	10.000	10.000	10.000	10.000	10.000	10.000
Houston Pilots G - 75/76	10.000	10.000	10.000	10.000	10.000	10.000	10.000	10.000	10.000	10.000	10.000	10.000	10.000	10.000	10.000	10.000	10.000	10.000	10.000	10.000	10.000	10.000	10.000	10.000	10.000	10.000	10.000	10.000	10.000	10.000	10.000	10.000	10.000	10.000	10.000	10.000
Houston Pilots F - 63/64	10.000	10.000	10.000	10.000	10.000	10.000	10.000	10.000	10.000	10.000	10.000	10.000	10.000	10.000	10.000	10.000	10.000	10.000	10.000	10.000	10.000	10.000	10.000	10.000	10.000	10.000	10.000	10.000	10.000	10.000	10.000	10.000	10.000	10.000	10.000	10.000
Houston Pilots E - 51/52	10.000	10.000	10.000	10.000	10.000	10.000	10.000	10.000	10.000	10.000	10.000	10.000	10.000	10.000	10.000	10.000	10.000	10.000	10.000	10.000	10.000	10.000	10.000	10.000	10.000	10.000	10.000	10.000	10.000	10.000	10.000	10.000	10.000	10.000	10.000	10.000
Houston Pilots D - 37/38	10.000	10.000	10.000	10.000	10.000	10.000	10.000	10.000	10.000	10.000	10.000	10.000	10.000	10.000	10.000	10.000	10.000	10.000	10.000	10.000	10.000	10.000	10.000	10.000	10.000	10.000	10.000	10.000	10.000	10.000	10.000	10.000	10.000	10.000	10.000	10.000
Houston Pilots C - 25/26	10.000	10.000	10.000	10.000	10.000	10.000	10.000	10.000	10.000	10.000	10.000	10.000	10.000	10.000	10.000	10.000	10.000	10.000	10.000	10.000	10.000	10.000	10.000	10.000	10.000	10.000	10.000	10.000	10.000	10.000	10.000	10.000	10.000	10.000	10.000	10.000
Houston Pilots B - 11/12	10.000	10.000	10.000	10.000	10.000	10.000	10.000	10.000	10.000	10.000	10.000	10.000	10.000	10.000	10.000	10.000	10.000	10.000	10.000	10.000	10.000	10.000	10.000	10.000	10.000	10.000	10.000	10.000	10.000	10.000	10.000	10.000	10.000	10.000	10.000	10.000
Houston Pilots A - 1 & 2 Bravo	10.000	10.000	10.000	10.000	10.000	10.000	10.000	10.000	10.000	10.000	10.000	10.000	10.000	10.000	10.000	10.000	10.000	10.000	10.000	10.000	10.000	10.000	10.000	10.000	10.000	10.000	10.000	10.000	10.000	10.000	10.000	10.000	9.822	9.808	10.000	10.000

Houston Pilots Wind Report



Example

Sustained wind 13 MPH
Gusts 18 MPH
Wind from the N

WS: 13
G:18
N

Time	08-11-2022 Thu 3am	08-11-2022 Thu 4am	08-11-2022 Thu 5am	08-11-2022 Thu 6am	08-11-2022 Thu 7am	08-11-2022 Thu 8am	08-11-2022 Thu 9am	08-11-2022 Thu 10am	08-11-2022 Thu 11am	08-11-2022 Thu 12pm	08-11-2022 Thu 1pm	08-11-2022 Thu 2pm	08-11-2022 Thu 3pm	08-11-2022 Thu 4pm	08-11-2022 Thu 5pm	08-11-2022 Thu 6pm	08-11-2022 Thu 7pm	08-11-2022 Thu 8pm	08-11-2022 Thu 9pm	08-11-2022 Thu 10pm	08-11-2022 Thu 11pm	08-12-2022 Fri 12am	08-12-2022 Fri 1am	08-12-2022 Fri 2am	08-12-2022 Fri 3am	08-12-2022 Fri 4am	08-12-2022 Fri 5am	08-12-2022 Fri 6am	08-12-2022 Fri 7am	08-12-2022 Fri 8am	08-12-2022 Fri 9am	08-12-2022 Fri 10am	08-12-2022 Fri 11am	08-12-2022 Fri 12pm	08-12-2022 Fri 1pm	08-12-2022 Fri 2pm	
Houston Pilots N - 610 Bridge	WS: 2 G:4 SW	WS: 1 G:3 ENE	WS: 3 G:5 NE	WS: 2 G:6 SSE	WS: 2 G:5 NW	WS: 2 G:6 NNW	WS: 3 G:6 NNE	WS: 2 G:6 NE	WS: 3 G:6 ENE	WS: 4 G:7 ENE	WS: 6 G:7 NE	WS: 5 G:6 NNE	WS: 6 G:7 NE	WS: 5 G:6 ENE	WS: 4 G:6 E	WS: 6 G:11 E	WS: 6 G:11 ESE	WS: 5 G:11 SE	WS: 5 G:9 SE	WS: 4 G:7 SSE	WS: 2 G:4 SE	WS: 1 G:3 SSE	WS: 1 G:2 S	WS: 1 G:1 ESE	WS: 1 G:1 E	WS: 1 G:2 NNE	WS: 1 G:2 NNE	WS: 1 G:3 NNE	WS: 2 G:3 NNE	WS: 3 G:5 NE	WS: 6 G:7 NNE	WS: 6 G:9 NNE	WS: 6 G:10 NE	WS: 6 G:10 NE	WS: 7 G:13 ENE	WS: 7 G:13 ENE	
Houston Pilots M - Kinder 1	WS: 2 G:4 WNW	WS: 3 G:3 ENE	WS: 3 G:6 NNE	WS: 2 G:7 ENE	WS: 1 G:6 NW	WS: 2 G:6 NNW	WS: 3 G:6 NNE	WS: 3 G:5 N	WS: 3 G:6 NNE	WS: 4 G:7 NE	WS: 6 G:8 NNE	WS: 5 G:7 NE	WS: 6 G:8 ENE	WS: 5 G:7 ENE	WS: 4 G:7 E	WS: 7 G:11 ESE	WS: 7 G:11 ESE	WS: 5 G:11 SE	WS: 5 G:9 SSE	WS: 4 G:7 SSE	WS: 2 G:4 SE	WS: 1 G:2 SSE	WS: 1 G:1 S	WS: 1 G:1 SSE	WS: 1 G:1 SSE	WS: 1 G:2 NNE	WS: 1 G:2 NNE	WS: 1 G:2 NNE	WS: 2 G:2 NNE	WS: 3 G:5 NNE	WS: 6 G:7 NNE	WS: 6 G:9 NNE	WS: 6 G:10 NE	WS: 6 G:10 NE	WS: 7 G:13 ENE	WS: 7 G:12 ENE	
Houston Pilots L - Greens Bayou	WS: 2 G:5 NW	WS: 1 G:3 NE	WS: 3 G:5 ENE	WS: 3 G:7 NE	WS: 2 G:7 SSE	WS: 2 G:7 SW	WS: 4 G:6 NNE	WS: 3 G:5 N	WS: 3 G:6 NNE	WS: 5 G:7 NNE	WS: 6 G:8 NNE	WS: 5 G:7 NE	WS: 6 G:7 NE	WS: 4 G:6 ENE	WS: 6 G:8 ESE	WS: 7 G:11 E	WS: 7 G:11 ESE	WS: 6 G:11 SE	WS: 5 G:9 SE	WS: 4 G:7 SSE	WS: 2 G:4 SE	WS: 2 G:3 SSE	WS: 1 G:2 SSE	WS: 1 G:2 SSE	WS: 1 G:1 SSW	WS: 0 G:1 NNE	WS: 1 G:1 NNE	WS: 1 G:2 NNE	WS: 1 G:2 NE	WS: 2 G:2 NE	WS: 3 G:4 NE	WS: 6 G:7 NNE	WS: 6 G:9 NNE	WS: 6 G:10 NE	WS: 6 G:10 NE	WS: 7 G:12 ENE	WS: 7 G:12 ENE
Houston Pilots K - Shell Crude	WS: 3 G:5 WNW	WS: 1 G:4 NE	WS: 3 G:6 SE	WS: 3 G:8 NE	WS: 2 G:8 ESE	WS: 3 G:7 SSE	WS: 4 G:6 NNE	WS: 3 G:5 N	WS: 4 G:6 NNE	WS: 5 G:7 NNE	WS: 6 G:8 NNE	WS: 6 G:8 NE	WS: 5 G:7 NE	WS: 5 G:7 E	WS: 7 G:9 ESE	WS: 7 G:11 ESE	WS: 7 G:11 ESE	WS: 6 G:11 SE	WS: 5 G:9 SE	WS: 3 G:7 SSE	WS: 3 G:4 SE	WS: 2 G:3 SSE	WS: 1 G:2 SSE	WS: 1 G:2 SSE	WS: 1 G:1 WNW	WS: 1 G:2 NNE	WS: 1 G:2 NNE	WS: 1 G:2 NE	WS: 2 G:2 NE	WS: 3 G:4 NE	WS: 6 G:7 NNE	WS: 6 G:9 NNE	WS: 6 G:10 NE	WS: 6 G:10 NE	WS: 7 G:12 ENE	WS: 7 G:11 ENE	
Houston Pilots J - Lynchburg Ferries	WS: 3 G:6 SW	WS: 1 G:4 NE	WS: 3 G:6 W	WS: 3 G:8 NNE	WS: 3 G:9 NE	WS: 3 G:9 NNE	WS: 4 G:6 NNE	WS: 3 G:4 N	WS: 4 G:6 NNE	WS: 5 G:7 NNE	WS: 6 G:8 NNE	WS: 5 G:7 NE	WS: 5 G:7 NE	WS: 5 G:7 E	WS: 7 G:9 ESE	WS: 8 G:11 ESE	WS: 8 G:11 ESE	WS: 6 G:10 SE	WS: 5 G:9 SE	WS: 4 G:7 SSE	WS: 3 G:4 SE	WS: 3 G:3 SSE	WS: 2 G:2 ENE	WS: 2 G:2 SSW	WS: 1 G:2 SSW	WS: 1 G:2 NNE	WS: 2 G:2 NNE	WS: 2 G:3 NE	WS: 3 G:3 NNE	WS: 4 G:5 NNE	WS: 6 G:7 NNE	WS: 6 G:9 NNE	WS: 6 G:10 NE	WS: 6 G:10 NE	WS: 7 G:12 ENE	WS: 7 G:11 ENE	
Houston Pilots I - Exxon 3	WS: 3 G:6 SW	WS: 2 G:5 S	WS: 3 G:7 N	WS: 3 G:9 NNE	WS: 3 G:9 NNE	WS: 4 G:8 NNE	WS: 5 G:6 NNE	WS: 3 G:4 NNE	WS: 4 G:6 NNE	WS: 5 G:6 NNE	WS: 5 G:6 NNE	WS: 5 G:7 NE	WS: 5 G:7 E	WS: 6 G:8 ESE	WS: 6 G:8 ESE	WS: 8 G:11 ESE	WS: 8 G:11 ESE	WS: 7 G:10 SE	WS: 6 G:9 SE	WS: 4 G:8 SSE	WS: 3 G:5 SSE	WS: 3 G:5 SSE	WS: 2 G:4 SSE	WS: 3 G:4 ESE	WS: 2 G:3 NW	WS: 2 G:3 NW	WS: 2 G:3 NNE	WS: 2 G:4 NE	WS: 3 G:4 NE	WS: 4 G:5 NNE	WS: 6 G:8 NNE	WS: 7 G:9 NNE	WS: 8 G:10 NNE	WS: 8 G:10 NE	WS: 8 G:12 ENE	WS: 8 G:12 ENE	
Houston Pilots H - Morgans Point	WS: 4 G:5 ESE	WS: 5 G:5 NNW	WS: 4 G:7 N	WS: 4 G:10 NNE	WS: 5 G:9 NNE	WS: 6 G:8 NNE	WS: 6 G:7 NNE	WS: 3 G:4 NNE	WS: 4 G:6 NE	WS: 4 G:6 NE	WS: 5 G:7 NE	WS: 5 G:7 E	WS: 7 G:8 ESE	WS: 6 G:8 ESE	WS: 6 G:8 ESE	WS: 8 G:11 ESE	WS: 8 G:11 ESE	WS: 7 G:10 SE	WS: 6 G:9 SE	WS: 4 G:7 SSE	WS: 4 G:6 SSE	WS: 3 G:5 SSE	WS: 3 G:5 S	WS: 3 G:5 NW	WS: 3 G:5 NW	WS: 3 G:5 NNE	WS: 3 G:5 NNE	WS: 4 G:6 NNE	WS: 5 G:7 NNE	WS: 6 G:8 NNE	WS: 6 G:8 NNE	WS: 7 G:10 NE	WS: 7 G:10 NE	WS: 8 G:12 ENE	WS: 8 G:12 ENE		
Houston Pilots G - 75/76	WS: 6 G:6 ESE	WS: 6 G:6 WSW	WS: 6 G:7 N	WS: 9 G:10 NNE	WS: 8 G:9 NNE	WS: 8 G:8 NNE	WS: 8 G:8 NNE	WS: 5 G:5 NNE	WS: 5 G:7 NE	WS: 5 G:7 NE	WS: 5 G:7 ENE	WS: 5 G:7 E	WS: 7 G:8 E	WS: 6 G:8 E	WS: 8 G:11 SE	WS: 8 G:12 SE	WS: 8 G:11 SE	WS: 8 G:11 SE	WS: 7 G:11 SE	WS: 6 G:10 SSE	WS: 5 G:8 S	WS: 5 G:7 S	WS: 5 G:7 SSW	WS: 5 G:6 WNW	WS: 4 G:6 NW	WS: 4 G:6 NW	WS: 5 G:6 NNE	WS: 5 G:7 NNE	WS: 6 G:8 NNE	WS: 6 G:8 NNE	WS: 7 G:10 NNE	WS: 8 G:11 NNE	WS: 8 G:10 NNE	WS: 8 G:11 NE	WS: 8 G:12 ENE	WS: 8 G:12 ENE	
Houston Pilots F - 63/64	WS: 6 G:6 ESE	WS: 6 G:6 ESE	WS: 6 G:6 SW	WS: 10 G:10 NNE	WS: 8 G:8 NNE	WS: 8 G:8 ENE	WS: 9 G:9 NNE	WS: 7 G:7 NE	WS: 7 G:7 NE	WS: 7 G:9 NNE	WS: 6 G:8 NNE	WS: 5 G:7 ENE	WS: 6 G:8 ENE	WS: 6 G:8 ENE	WS: 7 G:9 ESE	WS: 8 G:11 SE	WS: 9 G:12 SE	WS: 8 G:11 SE	WS: 8 G:11 SE	WS: 7 G:11 SSE	WS: 6 G:10 SSE	WS: 6 G:8 S	WS: 5 G:7 S	WS: 5 G:7 SSW	WS: 5 G:7 W	WS: 4 G:7 NW	WS: 5 G:7 W	WS: 6 G:8 NNE	WS: 6 G:8 NNE	WS: 7 G:9 NNE	WS: 8 G:10 NNE	WS: 8 G:11 NNE	WS: 8 G:11 NE	WS: 8 G:12 ENE	WS: 8 G:12 ENE		
Houston Pilots E - 51/52	WS: 5 G:5 ENE	WS: 5 G:5 NE	WS: 6 G:7 NE	WS: 9 G:9 NE	WS: 8 G:8 ESE	WS: 9 G:9 ESE	WS: 10 G:10 NNE	WS: 8 G:8 NNE	WS: 7 G:7 NE	WS: 8 G:9 NNE	WS: 7 G:8 NNE	WS: 6 G:7 NNE	WS: 6 G:7 NE	WS: 5 G:7 E	WS: 8 G:9 ESE	WS: 9 G:11 SE	WS: 8 G:11 SE	WS: 8 G:11 SE	WS: 7 G:11 SSE	WS: 6 G:9 SSE	WS: 5 G:8 SSE	WS: 5 G:7 S	WS: 5 G:7 S	WS: 5 G:7 S	WS: 5 G:7 WSW	WS: 5 G:7 NW	WS: 5 G:7 NNW	WS: 7 G:8 ENE	WS: 6 G:8 NNE	WS: 7 G:9 NNE	WS: 8 G:10 NNE	WS: 8 G:11 NNE	WS: 8 G:11 NE	WS: 8 G:12 ENE	WS: 8 G:12 ENE		
Houston Pilots D - 37/38	WS: 5 G:5 E	WS: 5 G:5 E	WS: 7 G:7 E	WS: 9 G:9 NNE	WS: 8 G:9 NE	WS: 8 G:10 NNE	WS: 11 G:11 NNE	WS: 9 G:9 NNE	WS: 9 G:9 NE	WS: 8 G:10 NNE	WS: 6 G:8 NNE	WS: 5 G:7 NNE	WS: 6 G:8 NNE	WS: 6 G:8 NE	WS: 9 G:9 ESE	WS: 9 G:11 SE	WS: 8 G:11 SE	WS: 8 G:11 SE	WS: 7 G:11 SSE	WS: 6 G:9 SSE	WS: 5 G:8 SSE	WS: 5 G:7 S	WS: 5 G:7 S	WS: 5 G:7 S	WS: 5 G:7 SW	WS: 5 G:7 NW	WS: 6 G:7 NNW	WS: 7 G:8 SW	WS: 6 G:8 NNE	WS: 7 G:9 NNE	WS: 8 G:11 NNE	WS: 8 G:11 NNE	WS: 8 G:12 NNE	WS: 8 G:12 ENE	WS: 8 G:12 ENE		
Houston Pilots C - 25/26	WS: 4 G:5 S	WS: 5 G:6 E	WS: 6 G:7 E	WS: 8 G:9 NNE	WS: 8 G:9 NNE	WS: 10 G:10 ENE	WS: 11 G:12 NNE	WS: 9 G:10 NNE	WS: 8 G:9 NNE	WS: 9 G:10 NNE	WS: 7 G:9 NNE	WS: 6 G:8 NE	WS: 7 G:9 ENE	WS: 9 G:10 E	WS: 9 G:10 E	WS: 9 G:11 SE	WS: 8 G:11 SE	WS: 7 G:11 SE	WS: 7 G:10 SSE	WS: 6 G:9 SSE	WS: 5 G:8 SSE	WS: 4 G:7 S	WS: 4 G:7 S	WS: 4 G:7 SW	WS: 4 G:7 NW	WS: 5 G:7 NNW	WS: 6 G:7 NNW	WS: 6 G:7 NNW	WS: 7 G:8 ENE	WS: 8 G:9 NNE	WS: 9 G:11 NNE	WS: 9 G:11 NNE	WS: 9 G:12 NNE	WS: 8 G:12 NE	WS: 9 G:12 ENE	WS: 9 G:12 ENE	
Houston Pilots B - 11/12	WS: 3 G:5 SSW	WS: 6 G:6 SE	WS: 6 G:7 NE	WS: 6 G:9 NE	WS: 8 G:9 NNE	WS: 10 G:11 E	WS: 12 G:12 ENE	WS: 9 G:10 NNE	WS: 8 G:9 NNE	WS: 9 G:10 NNE	WS: 7 G:9 NE	WS: 6 G:8 E	WS: 7 G:9 ENE	WS: 9 G:10 E	WS: 9 G:10 E	WS: 8 G:11 ESE	WS: 8 G:11 ESE	WS: 7 G:11 SE	WS: 6 G:10 SSE	WS: 5 G:8 SSE	WS: 4 G:7 S	WS: 4 G:7 S	WS: 4 G:7 S	WS: 4 G:7 SSW	WS: 4 G:6 NW	WS: 5 G:7 NNW	WS: 5 G:7 NNW	WS: 6 G:7 NNW	WS: 7 G:8 S	WS: 8 G:9 NNE	WS: 9 G:11 NNE	WS: 9 G:12 NNE	WS: 9 G:12 NE	WS: 9 G:13 ENE	WS: 9 G:12 ENE		
Houston Pilots A - 1 & 2 Bravo	WS: 5 G:5 SSW	WS: 3 G:4 SW	WS: 3 G:4 SSE	WS: 7 G:7 NE	WS: 8 G:8 NNE	WS: 12 G:12 NE	WS: 14 G:14 N	WS: 11 G:11 NNE	WS: 11 G:11 NNE	WS: 11 G:12 NE	WS: 10 G:11 ENE	WS: 10 G:11 ENE	WS: 11 G:11 E	WS: 10 G:10 ESE	WS: 8 G:9 ESE	WS: 8 G:11 ESE	WS: 8 G:12 SE	WS: 9 G:12 SE	WS: 9 G:11 SE	WS: 8 G:10 SSE	WS: 7 G:9 SSE	WS: 6 G:8 S	WS: 6 G:8 S	WS: 5 G:7 NW	WS: 5 G:7 SE	WS: 6 G:7 SE	WS: 6 G:8 N	WS: 7 G:9 NNW	WS: 8 G:11 NNE	WS: 9 G:12 NNE	WS: 9 G:13 NE	WS: 9 G:13 NE	WS: 9 G:13 ENE	WS: 10 G:13 ENE	WS: 10 G:13 E		

See slides below for official thoughts on winds.

Houston Pilots: Thu. 8/11/2022

Forecast Discussion

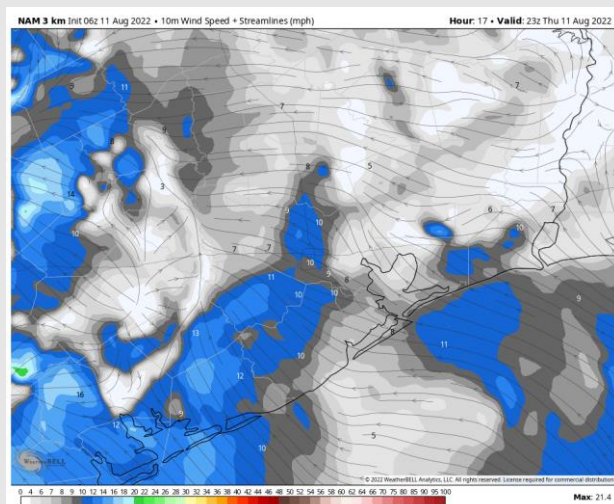
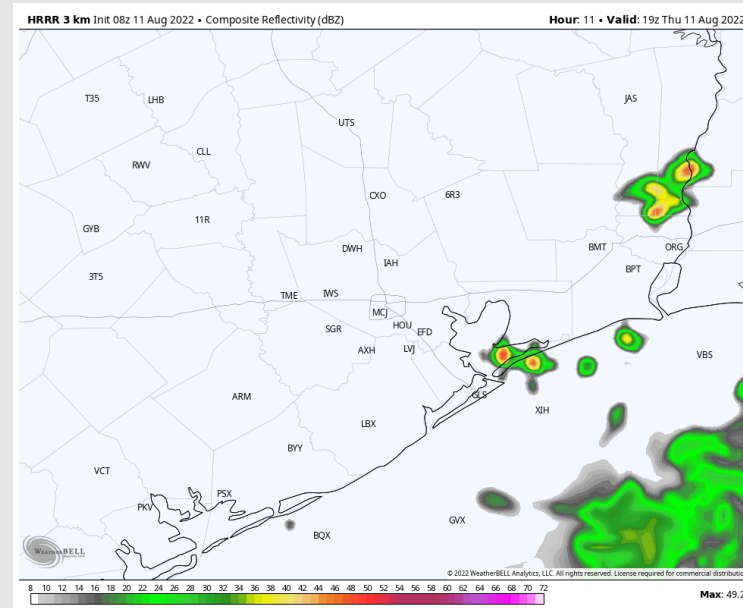
Precip: Isolated storm chances of 20%-30% will be possible until ~8AM today with the focus of these storms being further into the Gulf near the boarding station. Scattered storm chances of 40%-50% from 3PM into the overnight hours. Storm chances will diminish after 1 am. Overall, not favoring severe weather at this time, but a few intense downpours and lightning will be possible, especially during the afternoon to early evening hours.

Wind: Sustained winds generally 8-13 MPH out of the north throughout the day Thursday, with winds of 3-8 MPH further inland. Between 2-4PM winds become a lot more variable at 5-10 MPH. After 4 PM, sustained winds begin to veer mostly from the S/SE at 7-12 MPH. Gusts of 15-18 MPH possible under a stronger storm.

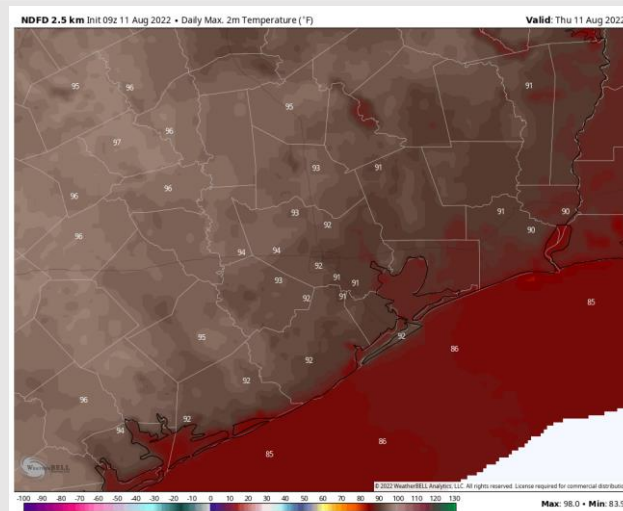
Temps: High temps in the mid to upper 80's for the near the boarding station, low 90s F for most other stations.

Visibility: Not anticipating fog concerns at this time, but reduced visibility will be possible in heaviest of storms.

Precip Forecast: 2 PM CT



Wind Speed
6 PM CT



High Temps
Today

Houston Pilots: Fri. 8/12/2022

Forecast Discussion

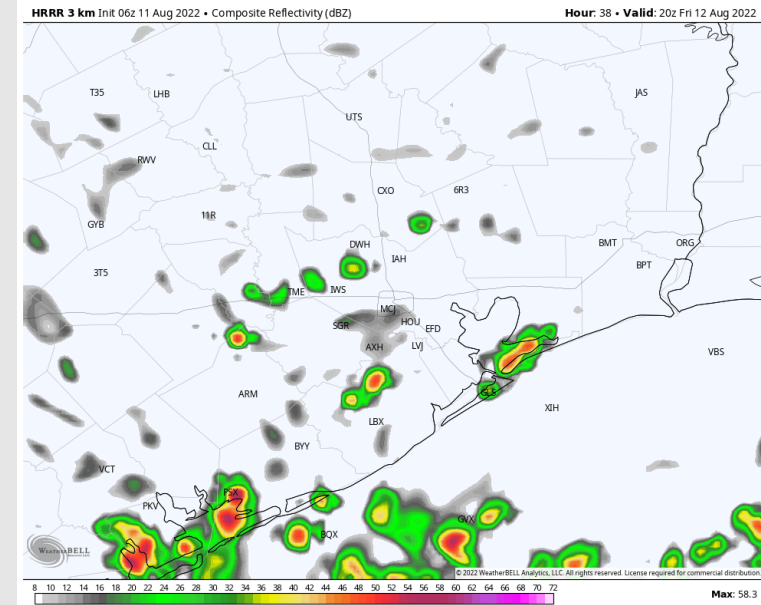
Precip: 30% chance of scattered showers/storms possible until 11 AM, with better chances near the boarding station. Chances decrease to 10% between 1PM before increasing back to 40 - 50% in the the afternoon and overnight. Gusty winds, lightning and locally heavy downpours expected with this storm.

Wind: Variable winds 7-12 MPH in the AM Friday from the N. After 2PM, winds veer out of the S/SE 10-15 MPH and continue into the overnight. Gusts of up to 20 MPH possible in the late AM until the evening.

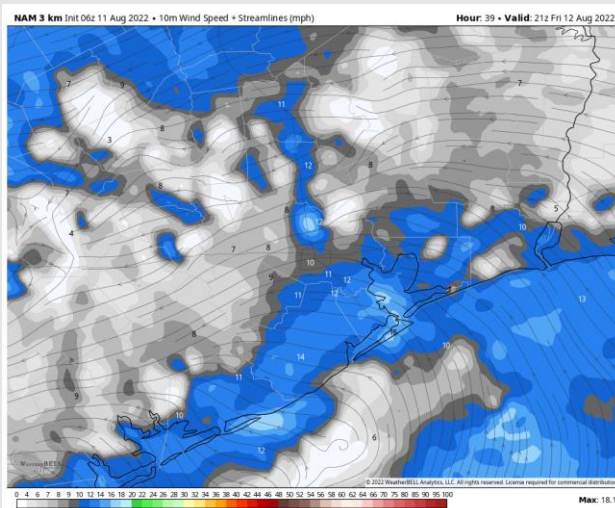
Temps: High temps Friday in the mid to upper 80s F with 90 F possible near Houston Metro.

Visibility: Not anticipating fog concerns at this time.

Precip Forecast: 3 PM CT



Wind Speed
4 PM CT



High Temps
Friday



Houston Pilots: sat. 8/13/2022

Forecast Discussion

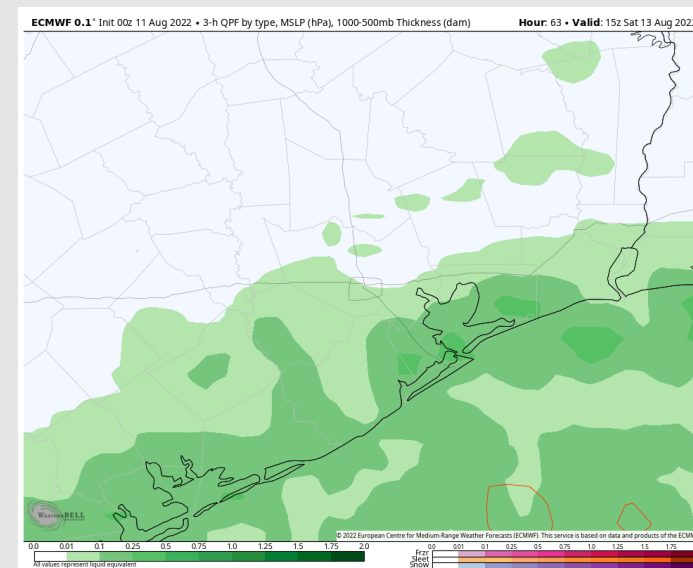
Precip: Scattered showers/storms anticipated to last throughout the day Saturday with better chances further into the Gulf near the boarding station.

Wind: Sustained winds out of the ESE at 3-8 MPH in the AM. After NOON, winds slightly pick up 8-13 MPH veering out of the SE with gusts up to 18 MPH.

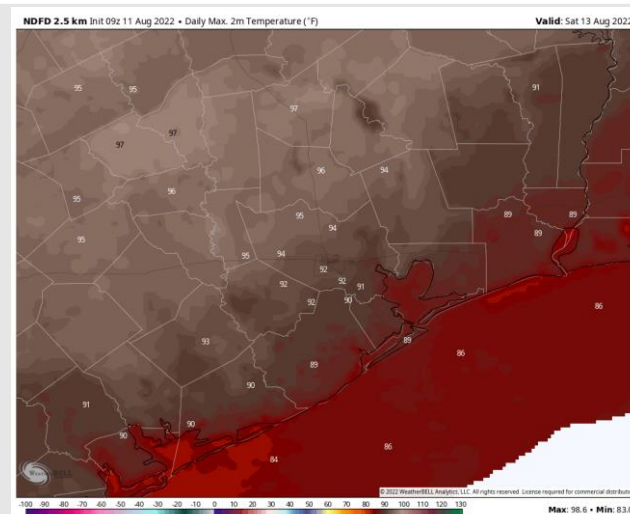
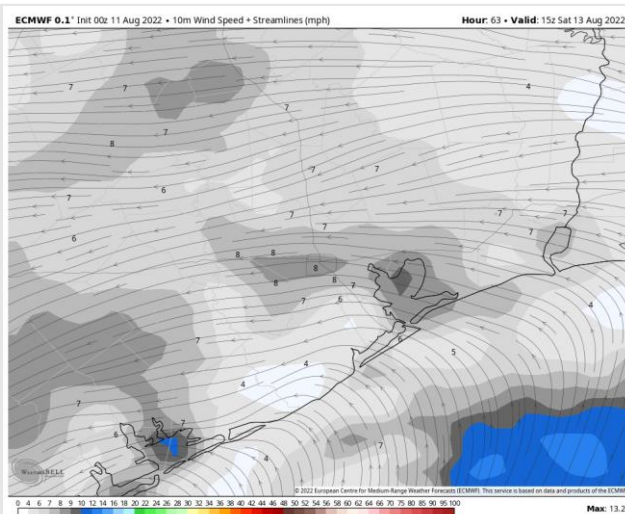
Temps: High temps Saturday in low to mid 90's for most stations with temps in the mid 80s F at the boarding station.

Visibility: Not anticipating fog concerns at this time.

Precip Forecast: 10 AM CT



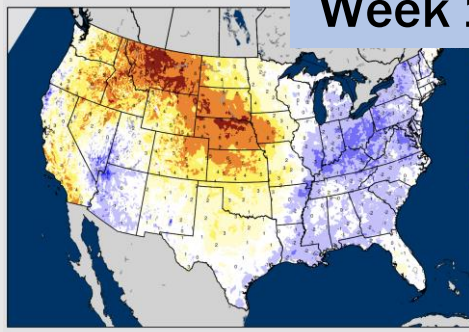
Wind Speed
10 AM CT



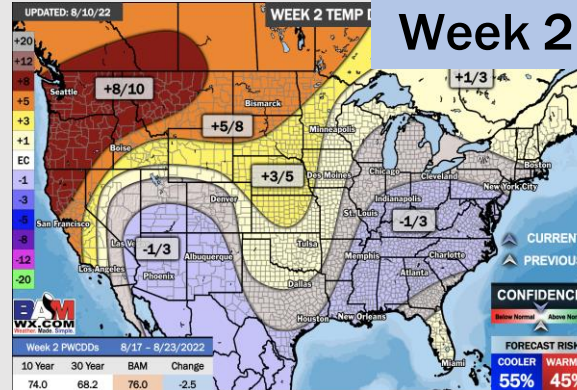
High Temps
Saturday

Houston Pilots: 8/11/2022

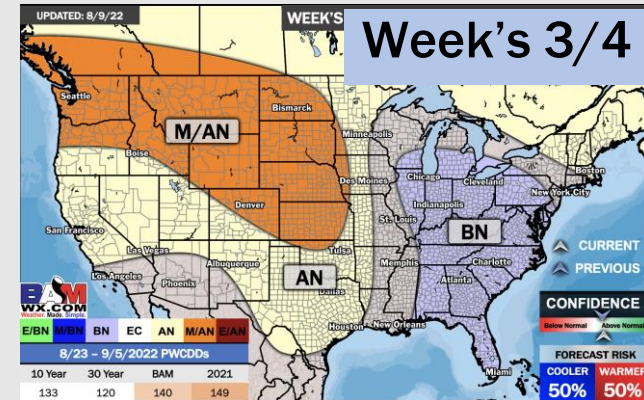
BAMcast Average Temperature Anomaly [°F]
 7 DAY AVG for Wed 10AUG2022 thru Tue 16AUG2022 Days 1 to 7



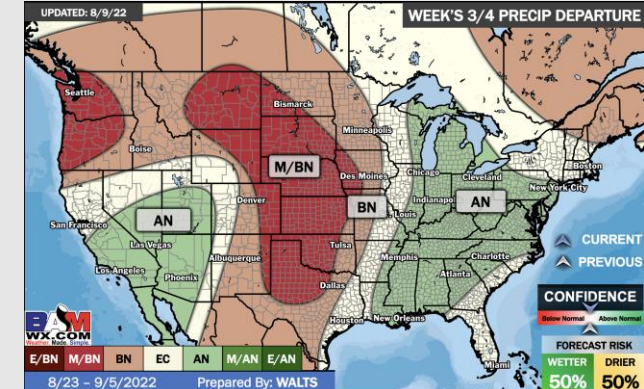
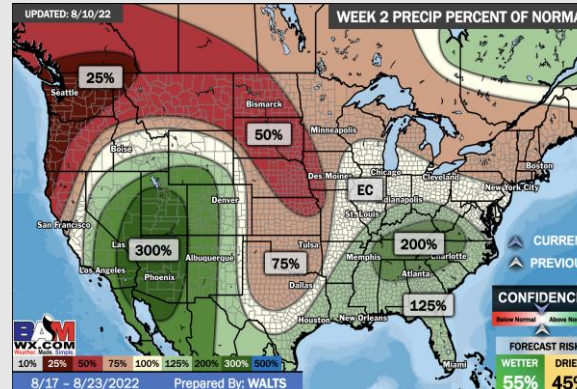
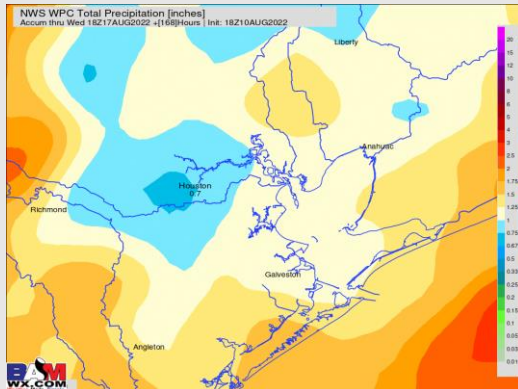
Week 1



Week 2



Week's 3/4



Week's 3/4 Precip Departure

- Temperatures expected to be below normal this week. Daily storm chances over the next few days with better precip chances working in Friday / Saturday.
- Week 2 likely features below normal risks for temperatures and above normal risks for precipitation.
- The weeks ¾ timeframe into early September looks to feature above normal temperatures and normal risks for precip.