

Houston Pilots Forecast Package

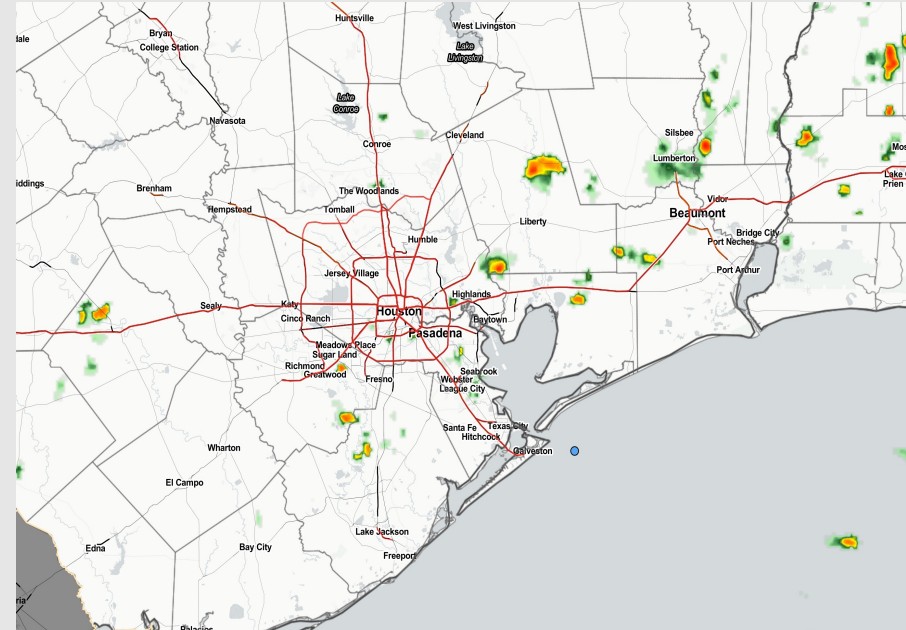
Houston Pilots

Updated: 2:10 PM CT
Sunday, July 24, 2022

Forecaster: Matt Griffin

Weather Headlines

- A few minor chances for precipitation the next few days – nothing significant of not with more dry time than not.
- Flow will stay predominately out of the S/SSE over the next few days.
- Not favoring any tropical threats the next 7 days.
- Above average temperatures look to continue into August.

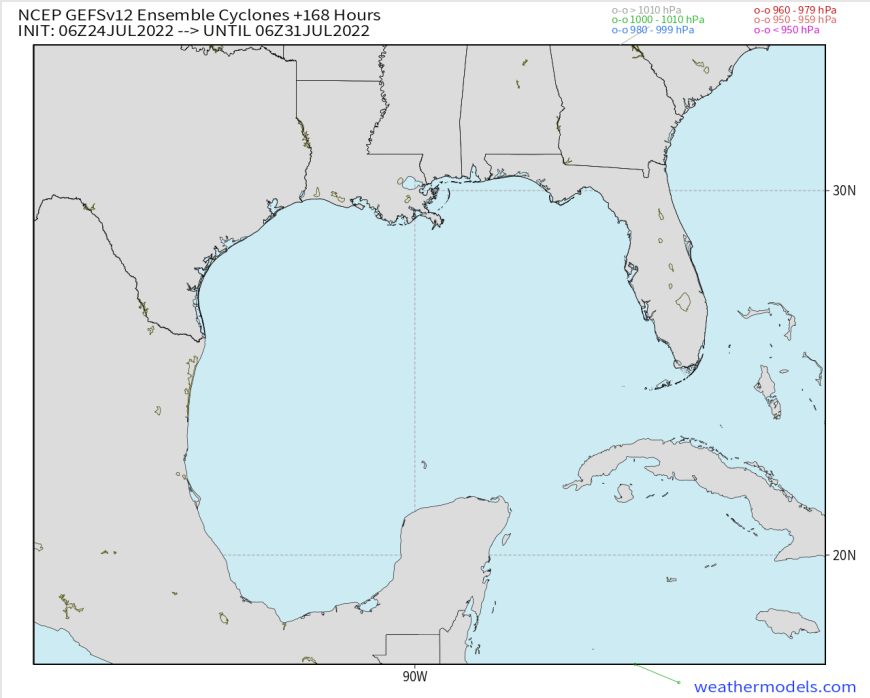


Radar/ NWS Alerts: 2:10 PM CT



As always, please do not hesitate to reach out to us with any forecast questions via the chat option on the Weather Porthole or our on-call number, **(317)-560-8122** press 1 for forecast questions.

Various model tracks next 7 days



Not favoring any tropical threats the next 7 days.

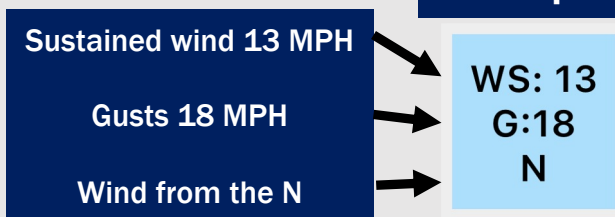
Confidence

Above Normal Below Normal

Houston Pilots Wind Report



Example



Time	07-24-2022 Sun 1pm	07-24-2022 Sun 2pm	07-24-2022 Sun 3pm	07-24-2022 Sun 4pm	07-24-2022 Sun 5pm	07-24-2022 Sun 6pm	07-24-2022 Sun 7pm	07-24-2022 Sun 8pm	07-24-2022 Sun 9pm	07-24-2022 Sun 10pm	07-24-2022 Sun 11pm	07-25-2022 Mon 12am	07-25-2022 Mon 1am	07-25-2022 Mon 2am	07-25-2022 Mon 3am	07-25-2022 Mon 4am	07-25-2022 Mon 5am	07-25-2022 Mon 6am	07-25-2022 Mon 7am	07-25-2022 Mon 8am	07-25-2022 Mon 9am	07-25-2022 Mon 10am	07-25-2022 Mon 11am	07-25-2022 Mon 12pm	07-25-2022 Mon 1pm	07-25-2022 Mon 2pm	07-25-2022 Mon 3pm	07-25-2022 Mon 4pm	07-25-2022 Mon 5pm	07-25-2022 Mon 6pm	07-25-2022 Mon 7pm	07-25-2022 Mon 8pm	07-25-2022 Mon 9pm	07-25-2022 Mon 10pm	07-25-2022 Mon 11pm	07-26-2022 Tue 12am			
Houston Pilots N - 610 Bridge	WS: 5 G:7 SSW	WS: 8 G:14 SSE	WS: 10 G:14 SSE	WS: 10 G:14 SSE	WS: 11 G:15 SSE	WS: 11 G:15 SSE	WS: 11 G:17 SSE	WS: 10 G:17 SSE	WS: 8 G:17 S	WS: 7 G:17 S	WS: 6 G:18 S	WS: 6 G:18 S	WS: 4 G:16 S	WS: 2 G:9 S	WS: 1 G:4 SSW	WS: 1 G:3 SSW	WS: 1 G:3 SSW	WS: 1 G:2 S	WS: 1 G:2 S	WS: 1 G:4 SSW	WS: 1 G:6 SSW	WS: 4 G:7 SSW	WS: 4 G:7 SSW	WS: 4 G:7 SSE	WS: 6 G:9 SE	WS: 7 G:12 SE	WS: 9 G:14 SE	WS: 11 G:16 SE	WS: 12 G:17 SSE	WS: 12 G:18 SSE	WS: 12 G:18 SSE	WS: 11 G:17 SSE	WS: 9 G:15 SSE	WS: 7 G:13 SSE	WS: 6 G:11 S	WS: 4 G:8 S			
Houston Pilots M - Kinder 1	WS: 5 G:7 S	WS: 9 G:11 SSE	WS: 11 G:14 SSE	WS: 11 G:14 SSE	WS: 11 G:15 SSE	WS: 11 G:15 SSE	WS: 11 G:17 SSE	WS: 10 G:17 S	WS: 8 G:17 S	WS: 7 G:17 S	WS: 6 G:18 S	WS: 5 G:18 S	WS: 4 G:16 S	WS: 2 G:8 S	WS: 1 G:4 SSW	WS: 1 G:2 SSW	WS: 1 G:2 S	WS: 1 G:2 S	WS: 1 G:4 SSW	WS: 1 G:6 SSW	WS: 4 G:7 SSW	WS: 4 G:7 SSW	WS: 5 G:7 SSW	WS: 5 G:8 SE	WS: 6 G:8 SE	WS: 7 G:12 SE	WS: 9 G:14 SE	WS: 11 G:16 SE	WS: 12 G:17 SSE	WS: 12 G:18 SSE	WS: 12 G:18 SSE	WS: 11 G:17 SSE	WS: 9 G:15 SSE	WS: 7 G:13 SSE	WS: 6 G:10 S	WS: 4 G:8 S			
Houston Pilots L - Greens Bayou	WS: 5 G:7 S	WS: 11 G:13 SE	WS: 11 G:14 SSE	WS: 11 G:15 SSE	WS: 11 G:15 SSE	WS: 11 G:15 SSE	WS: 11 G:17 SSE	WS: 10 G:17 S	WS: 8 G:17 S	WS: 7 G:17 S	WS: 6 G:17 S	WS: 5 G:17 S	WS: 4 G:15 S	WS: 2 G:8 S	WS: 2 G:6 SSW	WS: 1 G:3 SSW	WS: 1 G:2 SSW	WS: 1 G:2 SSW	WS: 1 G:2 SSW	WS: 2 G:4 SSW	WS: 5 G:6 SSW	WS: 5 G:7 SSW	WS: 5 G:7 SSW	WS: 4 G:6 SSE	WS: 5 G:6 SSE	WS: 7 G:11 SE	WS: 10 G:14 SE	WS: 12 G:16 SE	WS: 12 G:17 SSE	WS: 13 G:18 SSE	WS: 12 G:18 SSE	WS: 11 G:17 SSE	WS: 9 G:15 SSE	WS: 7 G:13 SSE	WS: 6 G:10 S	WS: 5 G:8 S			
Houston Pilots K - Shell Crude	WS: 6 G:8 SSE	WS: 12 G:15 SE	WS: 11 G:14 SSE	WS: 11 G:15 SSE	WS: 12 G:16 SSE	WS: 12 G:17 SSE	WS: 12 G:17 SSE	WS: 8 G:17 S	WS: 6 G:17 S	WS: 6 G:17 S	WS: 6 G:17 S	WS: 4 G:16 S	WS: 4 G:15 S	WS: 2 G:9 SSW	WS: 1 G:4 SSW	WS: 1 G:2 S	WS: 1 G:2 S	WS: 1 G:2 S	WS: 1 G:2 S	WS: 2 G:4 SSW	WS: 5 G:6 SSW	WS: 5 G:7 SSW	WS: 5 G:7 SSW	WS: 5 G:6 SSE	WS: 7 G:9 SE	WS: 8 G:12 SE	WS: 10 G:14 SE	WS: 12 G:16 SE	WS: 13 G:18 SE	WS: 13 G:18 SE	WS: 13 G:17 SSE	WS: 11 G:16 SSE	WS: 8 G:14 SSE	WS: 6 G:12 SSE	WS: 5 G:10 S	WS: 5 G:8 S			
Houston Pilots J - Lynchburg Ferries	WS: 7 G:8 SSE	WS: 12 G:15 SSE	WS: 12 G:16 SSE	WS: 13 G:17 SSE	WS: 13 G:17 SSE	WS: 12 G:17 SSE	WS: 12 G:17 SSE	WS: 8 G:17 S	WS: 6 G:17 S	WS: 6 G:17 S	WS: 6 G:17 S	WS: 4 G:15 S	WS: 2 G:10 S	WS: 2 G:8 S	WS: 1 G:4 S	WS: 2 G:3 S	WS: 1 G:2 S	WS: 1 G:2 S	WS: 1 G:2 S	WS: 2 G:4 S	WS: 5 G:6 S	WS: 5 G:7 S	WS: 5 G:6 SSE	WS: 5 G:6 SSE	WS: 7 G:9 SE	WS: 9 G:12 SE	WS: 11 G:14 SE	WS: 12 G:16 SE	WS: 14 G:18 SE	WS: 14 G:18 SE	WS: 13 G:18 SSE	WS: 11 G:16 SSE	WS: 9 G:14 SSE	WS: 8 G:13 SSE	WS: 7 G:11 S	WS: 5 G:9 S			
Houston Pilots I - Exxon 3	WS: 9 G:10 SSE	WS: 13 G:17 SSE	WS: 13 G:17 SSE	WS: 14 G:18 SSE	WS: 14 G:19 SSE	WS: 13 G:18 SSE	WS: 12 G:18 SSE	WS: 10 G:18 S	WS: 8 G:18 S	WS: 7 G:16 S	WS: 6 G:17 S	WS: 6 G:17 S	WS: 5 G:16 S	WS: 4 G:13 S	WS: 3 G:11 S	WS: 3 G:6 S	WS: 2 G:5 S	WS: 2 G:3 S	WS: 2 G:3 S	WS: 2 G:4 S	WS: 5 G:6 S	WS: 5 G:7 S	WS: 5 G:6 SSE	WS: 5 G:6 SSE	WS: 6 G:8 SSE	WS: 8 G:10 SSE	WS: 10 G:13 SSE	WS: 12 G:15 SSE	WS: 13 G:17 SSE	WS: 14 G:18 SSE	WS: 14 G:18 SSE	WS: 14 G:18 SSE	WS: 13 G:18 SSE	WS: 12 G:16 SSE	WS: 10 G:15 SSE	WS: 8 G:13 SSE	WS: 7 G:11 S	WS: 6 G:10 S	
Houston Pilots H - Morgans Point	WS: 10 G:12 SSE	WS: 15 G:18 SSE	WS: 15 G:19 SSE	WS: 16 G:20 SSE	WS: 16 G:20 SSE	WS: 15 G:19 SSE	WS: 14 G:19 SSE	WS: 13 G:18 S	WS: 11 G:18 S	WS: 9 G:17 S	WS: 9 G:17 S	WS: 8 G:16 S	WS: 7 G:16 S	WS: 6 G:14 S	WS: 5 G:13 S	WS: 5 G:8 S	WS: 3 G:7 S	WS: 3 G:6 S	WS: 3 G:5 S	WS: 4 G:6 S	WS: 4 G:6 S	WS: 4 G:6 S	WS: 5 G:6 SSE	WS: 7 G:8 SE	WS: 9 G:11 SE	WS: 11 G:13 SE	WS: 12 G:15 SE	WS: 13 G:17 SSE	WS: 14 G:18 SSE	WS: 14 G:18 SSE	WS: 14 G:18 SSE	WS: 14 G:18 SSE	WS: 13 G:17 SSE	WS: 12 G:16 SSE	WS: 10 G:14 SSE	WS: 9 G:13 SSE	WS: 8 G:12 S		
Houston Pilots G - 75/76	WS: 12 G:13 SSE	WS: 16 G:18 SSE	WS: 16 G:18 SSE	WS: 17 G:19 SSE	WS: 17 G:20 SSE	WS: 17 G:19 SSE	WS: 17 G:19 SSE	WS: 15 G:18 S	WS: 13 G:17 S	WS: 13 G:17 S	WS: 13 G:17 S	WS: 12 G:17 S	WS: 10 G:14 S	WS: 10 G:13 S	WS: 9 G:11 S	WS: 7 G:9 S	WS: 6 G:8 S	WS: 5 G:7 S	WS: 4 G:7 S	WS: 4 G:7 S	WS: 4 G:6 S	WS: 3 G:6 S	WS: 3 G:6 S	WS: 4 G:6 SSE	WS: 5 G:6 SSE	WS: 8 G:11 SE	WS: 10 G:13 SE	WS: 12 G:15 SE	WS: 13 G:17 SSE	WS: 14 G:18 SSE	WS: 14 G:18 SSE	WS: 14 G:18 SSE	WS: 13 G:17 SSE	WS: 12 G:16 SSE	WS: 10 G:14 SSE	WS: 9 G:13 SSE	WS: 8 G:12 S		
Houston Pilots F - 63/64	WS: 13 G:14 SE	WS: 16 G:18 SSE	WS: 16 G:18 SSE	WS: 17 G:19 SSE	WS: 18 G:20 SSE	WS: 17 G:19 SSE	WS: 17 G:19 SSE	WS: 15 G:18 S	WS: 14 G:17 S	WS: 14 G:17 S	WS: 14 G:17 S	WS: 13 G:17 S	WS: 11 G:14 S	WS: 10 G:13 S	WS: 8 G:12 S	WS: 6 G:10 S	WS: 6 G:9 S	WS: 5 G:8 S	WS: 4 G:7 S	WS: 4 G:7 S	WS: 4 G:6 S	WS: 3 G:6 S	WS: 4 G:6 SE	WS: 4 G:6 SE	WS: 6 G:8 SE	WS: 8 G:10 SE	WS: 10 G:13 SE	WS: 12 G:15 SSE	WS: 13 G:17 SSE	WS: 14 G:18 SSE	WS: 14 G:18 SSE	WS: 14 G:18 SSE	WS: 13 G:18 SSE	WS: 12 G:17 SSE	WS: 10 G:15 SSE	WS: 9 G:14 SSE	WS: 8 G:13 SSE	WS: 7 G:12 SSE	
Houston Pilots E - 51/52	WS: 13 G:14 SSE	WS: 15 G:16 SSE	WS: 16 G:16 SSE	WS: 17 G:17 SSE	WS: 17 G:18 SSE	WS: 16 G:18 S	WS: 16 G:18 S	WS: 16 G:19 S	WS: 15 G:18 S	WS: 14 G:18 S	WS: 14 G:18 S	WS: 15 G:18 S	WS: 14 G:17 S	WS: 14 G:17 S	WS: 11 G:15 S	WS: 8 G:12 S	WS: 7 G:11 S	WS: 6 G:9 S	WS: 5 G:8 S	WS: 4 G:7 S	WS: 4 G:7 S	WS: 3 G:6 S	WS: 3 G:6 S	WS: 4 G:6 SSE	WS: 5 G:6 SSE	WS: 8 G:10 SE	WS: 10 G:12 SE	WS: 12 G:14 SSE	WS: 13 G:16 SSE	WS: 13 G:17 SSE	WS: 14 G:18 SSE	WS: 14 G:18 SSE	WS: 13 G:17 SSE	WS: 12 G:16 SSE	WS: 10 G:14 SSE	WS: 9 G:13 SSE	WS: 8 G:12 SSE		
Houston Pilots D - 37/38	WS: 12 G:13 SSE	WS: 14 G:15 SSE	WS: 15 G:16 S	WS: 16 G:17 S	WS: 16 G:18 S	WS: 16 G:18 S	WS: 16 G:19 S	WS: 16 G:19 S	WS: 15 G:18 S	WS: 14 G:18 S	WS: 14 G:18 S	WS: 15 G:18 S	WS: 14 G:17 S	WS: 12 G:15 S	WS: 11 G:14 S	WS: 9 G:12 S	WS: 8 G:11 S	WS: 6 G:9 S	WS: 6 G:8 S	WS: 4 G:7 S	WS: 4 G:7 S	WS: 4 G:6 S	WS: 4 G:6 S	WS: 5 G:6 SE	WS: 6 G:8 SE	WS: 8 G:10 SE	WS: 10 G:12 SE	WS: 11 G:14 SE	WS: 12 G:16 SSE	WS: 13 G:17 SSE	WS: 13 G:18 SSE	WS: 13 G:18 SSE	WS: 13 G:18 SSE	WS: 13 G:18 SSE	WS: 12 G:17 SSE	WS: 10 G:16 SSE	WS: 9 G:15 SSE	WS: 8 G:14 SSE	
Houston Pilots C - 25/26	WS: 12 G:13 S	WS: 14 G:15 SSE	WS: 14 G:15 SSE	WS: 14 G:16 S	WS: 15 G:17 S	WS: 14 G:17 S	WS: 14 G:18 S	WS: 14 G:18 S	WS: 13 G:18 S	WS: 13 G:18 S	WS: 13 G:18 S	WS: 12 G:17 S	WS: 10 G:14 S	WS: 10 G:13 S	WS: 8 G:12 S	WS: 7 G:11 S	WS: 6 G:9 S	WS: 6 G:8 S	WS: 5 G:7 S	WS: 4 G:7 S	WS: 4 G:6 S	WS: 4 G:6 S	WS: 4 G:6 SSE	WS: 5 G:6 SSE	WS: 6 G:8 SE	WS: 8 G:10 SE	WS: 9 G:11 SE	WS: 11 G:13 SSE	WS: 12 G:15 SSE	WS: 12 G:16 SSE	WS: 12 G:16 SSE	WS: 12 G:16 SSE	WS: 12 G:16 SSE	WS: 12 G:16 SSE	WS: 11 G:15 SSE	WS: 9 G:13 SSE	WS: 8 G:12 SSE	WS: 7 G:11 SSE	
Houston Pilots B - 11/12	WS: 11 G:12 SSE	WS: 13 G:14 SSE	WS: 13 G:14 SSE	WS: 13 G:15 S	WS: 14 G:16 S	WS: 14 G:16 S	WS: 14 G:17 S	WS: 15 G:18 S	WS: 14 G:18 S	WS: 14 G:18 S	WS: 14 G:18 S	WS: 14 G:18 S	WS: 14 G:17 S	WS: 14 G:16 S	WS: 10 G:13 S	WS: 9 G:12 S	WS: 8 G:11 S	WS: 6 G:9 S	WS: 6 G:8 S	WS: 5 G:7 S	WS: 4 G:6 S	WS: 4 G:6 S	WS: 4 G:6 SSE	WS: 5 G:6 SSE	WS: 7 G:8 SE	WS: 9 G:10 SE	WS: 10 G:12 SE	WS: 11 G:14 SE	WS: 12 G:16 SSE	WS: 13 G:18 SSE	WS: 13 G:18 SSE	WS: 13 G:18 SSE	WS: 13 G:18 SSE	WS: 13 G:18 SSE	WS: 12 G:17 SSE	WS: 10 G:16 SSE	WS: 9 G:15 SSE	WS: 8 G:14 SSE	
Houston Pilots A - 1 & 2 Bravo	WS: 10 G:10 S	WS: 11 G:12 S	WS: 11 G:12 S	WS: 12 G:13 S	WS: 14 G:15 S	WS: 14 G:15 S	WS: 15 G:16 S	WS: 16 G:17 S	WS: 17 G:19 S	WS: 18 G:19 S	WS: 18 G:19 S	WS: 16 G:18 S	WS: 14 G:15 S	WS: 13 G:14 S	WS: 10 G:13 S	WS: 9 G:12 S	WS: 8 G:11 S	WS: 6 G:9 S	WS: 6 G:8 S	WS: 5 G:7 S	WS: 4 G:6 S	WS: 4 G:6 S	WS: 4 G:6 SSE	WS: 5 G:6 SSE	WS: 6 G:8 SE	WS: 8 G:10 SE	WS: 9 G:11 SE	WS: 11 G:13 SSE	WS: 12 G:15 SSE	WS: 13 G:18 SSE	WS: 13 G:18 SSE	WS: 13 G:18 SSE	WS: 13 G:18 SSE	WS: 13 G:18 SSE	WS: 13 G:18 SSE	WS: 13 G:18 SSE	WS: 13 G:18 SSE	WS: 13 G:18 SSE	WS: 13 G:18 SSE

See slides below for official thoughts on winds.

Houston Pilots: Sun. 7/24/2022

Forecast Discussion

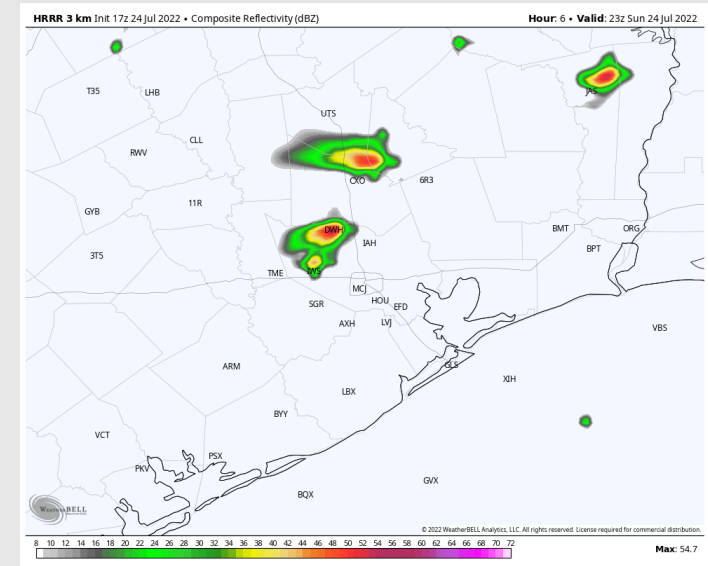
Precip: Spotty activity near the HOU area as of 1:40 PM CT should continue to shift north throughout the day. Chances will continue to drop off this afternoon, although something isolated cant be ruled out through about 6 PM, especially for the far northern stations. Current chances now (as of 1:40 PM) of 20% drop to 10% by 6 PM before activity quiets down thereafter.

Wind: By 4 PM, winds look to be sustained out off the SSE around 13 – 18 MPH where they continue through about 11 PM (lighter winds for northerly station in the Buffalo Bayou, especially after sunset). Gusts to 20 MPH possible. Winds around midnight start to weaken closer to 10 – 15 MPH sustained out of the SSE.

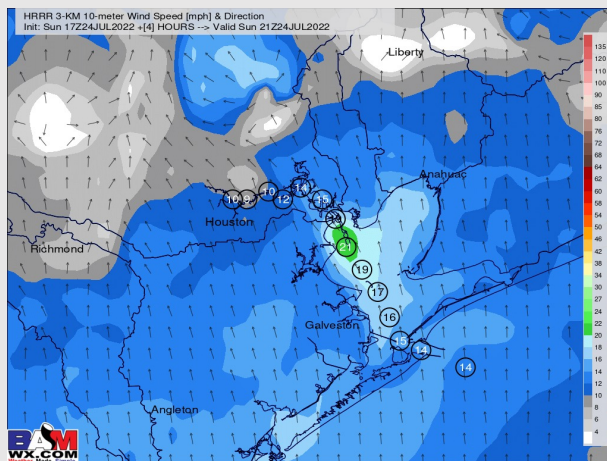
Temps: Low temperatures over open waters look to get into the low to mid 80's F.

Visibility: Not anticipating any fog concerns at this time.

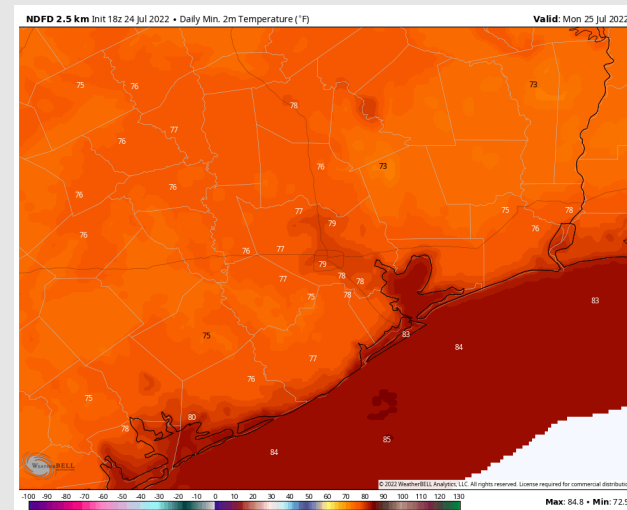
Precip Forecast: 6 PM CT



Wind Speed
7 AM CT



Low Temps
MON AM



Houston Pilots: Mon. 7/25/2022



Forecast Discussion

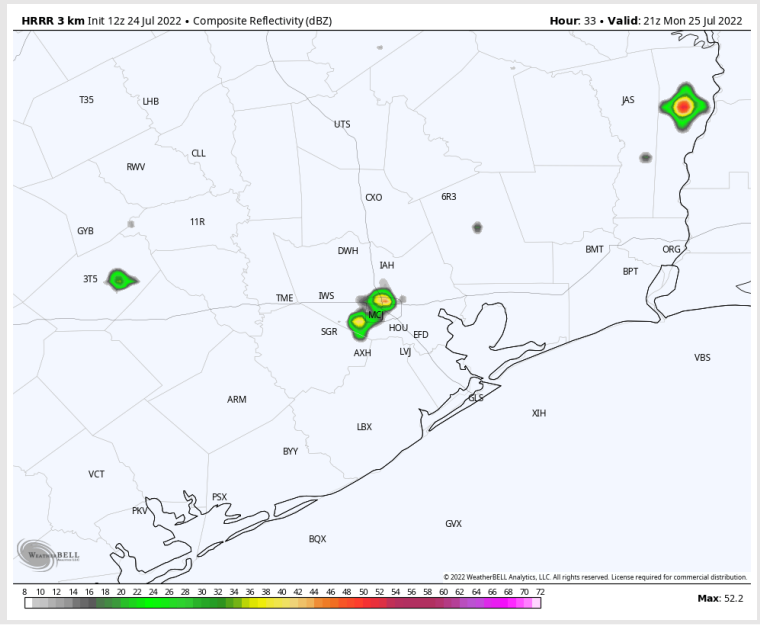
Precip: Isolated chances (10%) of a shower will be possible from 4 AM – 12 PM. A 20% of a shower/ storm is possible from 1 PM – 5 PM. Mostly dry conditions anticipated.

Wind: Winds will continue to weaken through the AM as winds shift more out of the SW. By 8 AM winds are anticipated to be in sustained around 3 – 8 MPH (weaker for northerly stations) out of the SSW. Winds in the afternoon start to shift back out of the SE where they will pick up once again. After 2 – 3 PM, winds are anticipated to be out of the SSE around 10 – 15 MPH with gusts near 20 MPH where they will generally stay for the rest of the afternoon/ evening. Once again, after sunset, we will likely see northerly stations see weaker winds while Morgan’s Point and points south will continue to see the higher sustained winds.

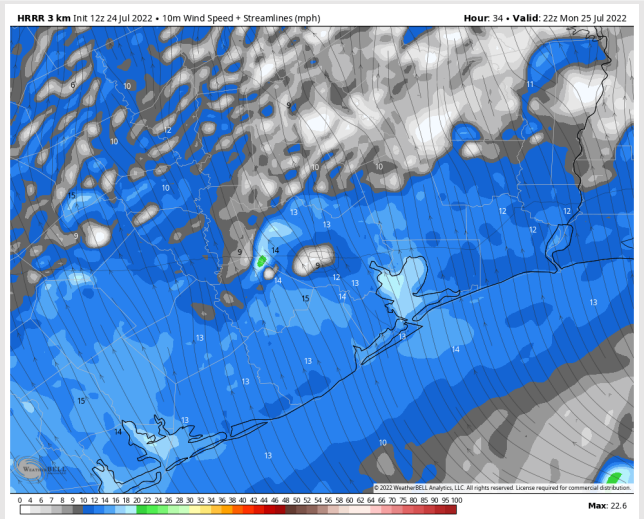
Temps: Highs look to get into the upper 80’s F once again over open waters with “Feels-like” temps in the 100’s F.

Visibility: No fog conditions anticipated at this time.

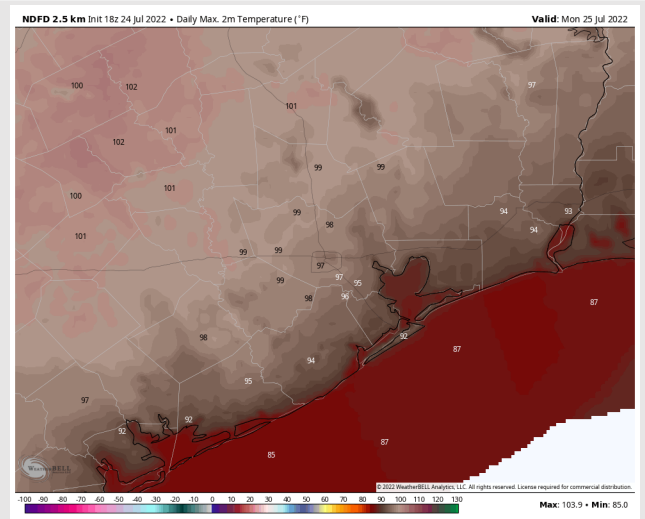
Precip Forecast: 4 PM CT



Wind Speed
5 PM CT



High Temps
Monday



Forecast Discussion

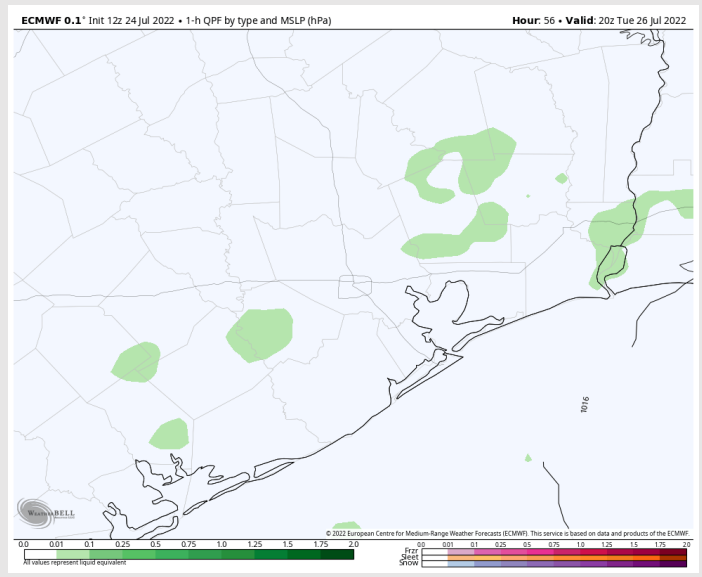
Precip: Precipitation will likely be similar to that of today (Sunday) and Monday with isolated chances in the morning with slightly better chances during the first half of the afternoon. Chances likely remain a general 20%.

Wind: Rinse and repeat pattern in regards to winds on TUE. AM winds likely shift more out of the S/ SSW in as winds weaken to around 3 – 9 MPH sustained before winds start to pick up in the afternoon as they shift more out of the SSE around 10 – 15 MPH with gusts near 22 MPH. After the sunsets, northerly stations likely see winds drop off.

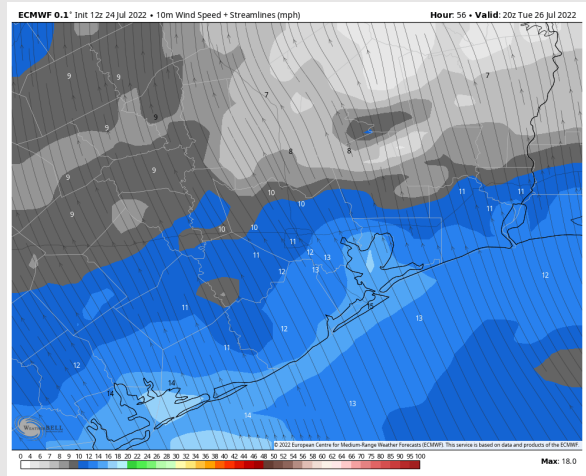
Temps: Highs likely reach the upper 80s to low 90s F for most stations.

Visibility: Not anticipating any fog concerns at this time.

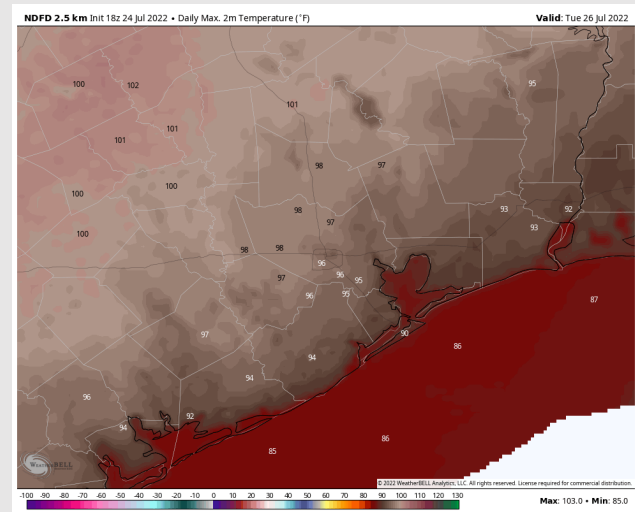
Precip Forecast: 10 AM CT



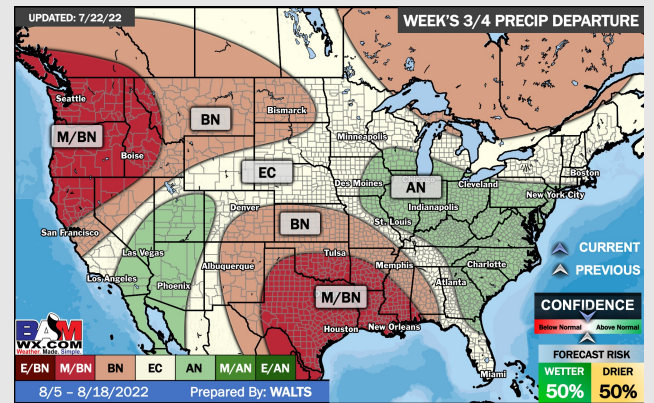
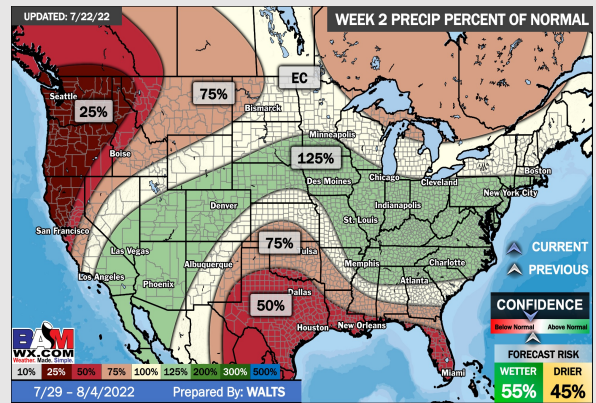
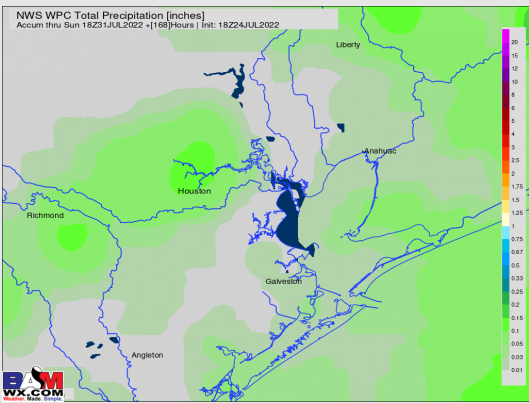
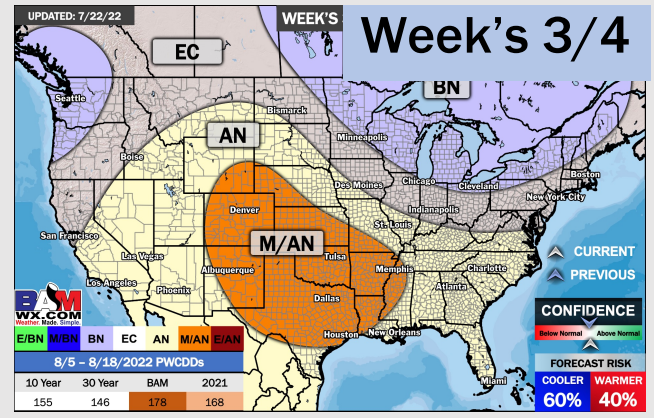
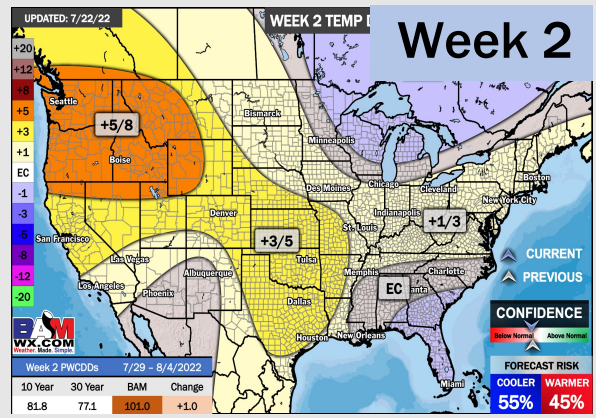
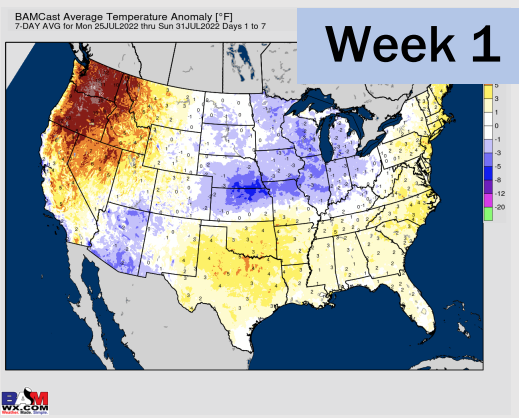
Wind Speed 2 PM CT



High Temps Tuesday



Houston Pilots: 7/24/22



- Another week with above normal temperatures. Daily, minor chances will be possible over the next few day, but not widespread heavy threats at this time. The front we have mentioned in this section the last few days seems to be less likely to be situated over the HOU area.
- Week 2 likely features above normal risks for temperatures and below normal precipitation risks.
- The weeks ¾ timeframe into the first couple weeks of August looks to feature above normal temperatures and below normal risks for precip.