

Houston Pilots Forecast Package

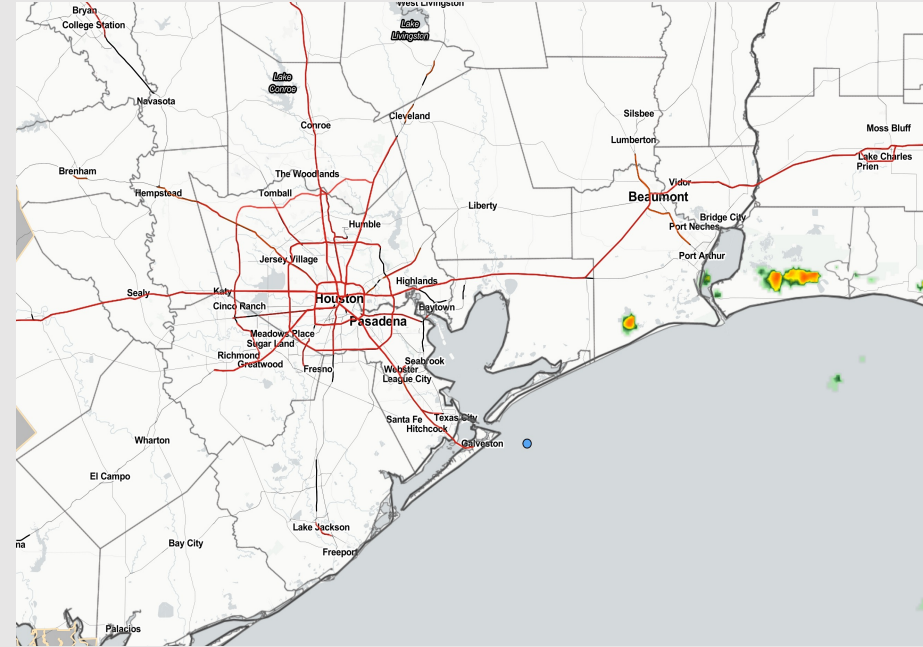
Houston Pilots

Updated: 1:00 PM CT
Sunday, July 17, 2022

Forecaster: Matt Griffin

Weather Headlines

- Outside of a few ~10% on a couple days over the next week, not eyeing much in the way of high precip potential.
- Flow will stay predominately out of the S/SW over the next few days.
- Not favoring any tropical threats the next 7 days.
- Above average temperatures look to continue through July.

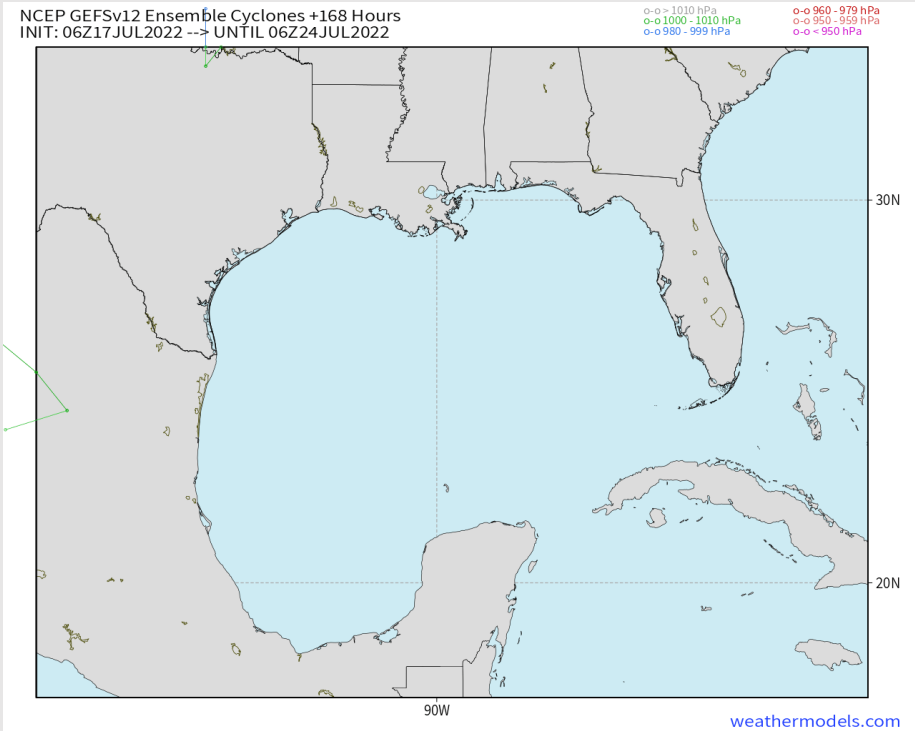


Radar/ NWS Alerts: 12:55 PM CT



As always, please do not hesitate to reach out to us with any forecast questions via the chat option on the Weather Porthole or our on-call number, **(317)-560-8122** press 1 for forecast questions.

Various model tracks next 7 days



Not favoring any tropical threats the next 7 days.

Confidence



Above Normal Below Normal

Houston Pilots Wind Report



Example

Sustained wind 13 MPH
Gusts 18 MPH
Wind from the N

WS: 13
G:18
N

Time	07-17-2022 Sun 12pm	07-17-2022 Sun 1pm	07-17-2022 Sun 2pm	07-17-2022 Sun 3pm	07-17-2022 Sun 4pm	07-17-2022 Sun 5pm	07-17-2022 Sun 6pm	07-17-2022 Sun 7pm	07-17-2022 Sun 8pm	07-17-2022 Sun 9pm	07-17-2022 Sun 10pm	07-17-2022 Sun 11pm	07-18-2022 Mon 12am	07-18-2022 Mon 1am	07-18-2022 Mon 2am	07-18-2022 Mon 3am	07-18-2022 Mon 4am	07-18-2022 Mon 5am	07-18-2022 Mon 6am	07-18-2022 Mon 7am	07-18-2022 Mon 8am	07-18-2022 Mon 9am	07-18-2022 Mon 10am	07-18-2022 Mon 11am	07-18-2022 Mon 12pm	07-18-2022 Mon 1pm	07-18-2022 Mon 2pm	07-18-2022 Mon 3pm	07-18-2022 Mon 4pm	07-18-2022 Mon 5pm	07-18-2022 Mon 6pm	07-18-2022 Mon 7pm	07-18-2022 Mon 8pm	07-18-2022 Mon 9pm	07-18-2022 Mon 10pm	07-18-2022 Mon 11pm					
Houston Pilots N - 610 Bridge	WS: 4 G:6 SSW	WS: 3 G:4 SE	WS: 4 G:5 ESE	WS: 8 G:10 ESE	WS: 10 G:13 SSE	WS: 10 G:13 S	WS: 10 G:13 S	WS: 10 G:13 S	WS: 11 G:18 S	WS: 10 G:20 S	WS: 10 G:21 SSW	WS: 9 G:21 SSW	WS: 8 G:21 SSW	WS: 7 G:21 SSW	WS: 6 G:21 SSW	WS: 5 G:21 SSW	WS: 4 G:21 SSW	WS: 4 G:8 SSW	WS: 4 G:9 SSW	WS: 4 G:9 SW	WS: 6 G:11 SW	WS: 8 G:13 SW	WS: 8 G:13 SW	WS: 7 G:12 SW	WS: 7 G:10 SW	WS: 6 G:10 SW	WS: 6 G:10 SSW	WS: 6 G:12 S	WS: 9 G:12 SSE	WS: 10 G:16 SSE	WS: 13 G:19 S	WS: 14 G:20 S	WS: 13 G:19 S	WS: 11 G:18 S	WS: 10 G:18 S	WS: 9 G:16 S					
Houston Pilots M - Kinder 1	WS: 4 G:6 SSW	WS: 3 G:4 SSE	WS: 5 G:5 ESE	WS: 9 G:11 SSE	WS: 10 G:13 SSE	WS: 10 G:13 S	WS: 11 G:15 S	WS: 11 G:18 S	WS: 10 G:20 S	WS: 10 G:20 SSW	WS: 9 G:21 SSW	WS: 7 G:21 SSW	WS: 6 G:21 SSW	WS: 6 G:19 SSW	WS: 5 G:11 SSW	WS: 4 G:9 SSW	WS: 4 G:8 SSW	WS: 4 G:8 SSW	WS: 4 G:8 SW	WS: 6 G:11 SW	WS: 8 G:13 SW	WS: 8 G:13 SW	WS: 7 G:12 SW	WS: 7 G:10 SW	WS: 6 G:9 SW	WS: 6 G:10 SSW	WS: 6 G:12 S	WS: 8 G:13 SSE	WS: 12 G:17 SSE	WS: 13 G:19 S	WS: 14 G:20 S	WS: 13 G:19 S	WS: 11 G:18 S	WS: 10 G:17 S	WS: 9 G:16 SSW						
Houston Pilots L - Greens Bayou	WS: 4 G:6 SSW	WS: 4 G:5 SSW	WS: 4 G:5 SE	WS: 9 G:11 SE	WS: 10 G:12 SSE	WS: 10 G:12 SSE	WS: 10 G:12 S	WS: 11 G:16 S	WS: 11 G:19 S	WS: 10 G:20 S	WS: 9 G:20 SSW	WS: 8 G:21 SSW	WS: 7 G:21 SSW	WS: 6 G:20 SSW	WS: 6 G:19 SSW	WS: 5 G:10 SSW	WS: 4 G:8 SSW	WS: 4 G:8 SSW	WS: 4 G:8 SW	WS: 6 G:11 SW	WS: 8 G:13 SW	WS: 8 G:13 SW	WS: 7 G:12 SW	WS: 7 G:10 SW	WS: 6 G:9 SW	WS: 6 G:10 SSW	WS: 6 G:12 S	WS: 8 G:13 SSE	WS: 11 G:14 SSE	WS: 12 G:17 SSE	WS: 14 G:19 S	WS: 14 G:20 S	WS: 12 G:18 S	WS: 11 G:18 S	WS: 10 G:17 S	WS: 9 G:16 SSW					
Houston Pilots K - Shell Crude	WS: 4 G:5 SSW	WS: 3 G:4 SSW	WS: 5 G:6 SSE	WS: 11 G:12 SE	WS: 10 G:12 SSE	WS: 10 G:12 SSE	WS: 10 G:14 S	WS: 11 G:16 S	WS: 11 G:19 S	WS: 10 G:20 S	WS: 9 G:21 SSW	WS: 8 G:21 SSW	WS: 7 G:21 SSW	WS: 6 G:20 SSW	WS: 6 G:19 SSW	WS: 5 G:11 SSW	WS: 4 G:9 SSW	WS: 4 G:8 SSW	WS: 4 G:8 SSW	WS: 4 G:8 SW	WS: 6 G:11 SW	WS: 9 G:13 SW	WS: 9 G:13 SW	WS: 8 G:12 SW	WS: 7 G:10 SW	WS: 6 G:9 SW	WS: 7 G:9 SSW	WS: 7 G:11 S	WS: 9 G:11 SSE	WS: 11 G:14 SSE	WS: 13 G:17 SSE	WS: 14 G:19 S	WS: 14 G:20 S	WS: 13 G:18 S	WS: 11 G:18 S	WS: 10 G:17 S	WS: 9 G:16 SSW				
Houston Pilots J - Lynchburg Ferries	WS: 4 G:5 SSW	WS: 4 G:4 SSW	WS: 5 G:7 S	WS: 12 G:14 SSE	WS: 10 G:13 SSE	WS: 10 G:13 SSE	WS: 11 G:15 S	WS: 12 G:17 S	WS: 11 G:19 S	WS: 10 G:20 S	WS: 9 G:20 SSW	WS: 8 G:21 SSW	WS: 7 G:21 SSW	WS: 6 G:20 SSW	WS: 5 G:19 SSW	WS: 6 G:11 SSW	WS: 5 G:9 SSW	WS: 5 G:8 SSW	WS: 5 G:8 SSW	WS: 5 G:9 SW	WS: 6 G:11 SW	WS: 9 G:13 SW	WS: 9 G:13 SW	WS: 8 G:11 SW	WS: 7 G:11 SW	WS: 6 G:10 SSW	WS: 6 G:11 S	WS: 8 G:13 SSE	WS: 10 G:15 SSE	WS: 12 G:18 SSE	WS: 14 G:19 S	WS: 15 G:19 S	WS: 15 G:20 S	WS: 13 G:18 S	WS: 12 G:18 S	WS: 11 G:17 S	WS: 10 G:16 SSW				
Houston Pilots I - Exxon 3	WS: 4 G:5 S	WS: 5 G:6 S	WS: 9 G:10 SSE	WS: 14 G:17 SSE	WS: 11 G:14 SSE	WS: 12 G:15 SSE	WS: 12 G:16 S	WS: 12 G:16 S	WS: 11 G:19 S	WS: 11 G:21 S	WS: 10 G:21 SSW	WS: 9 G:21 SSW	WS: 7 G:20 SSW	WS: 6 G:19 SSW	WS: 6 G:19 SSW	WS: 6 G:12 SSW	WS: 5 G:11 SSW	WS: 5 G:10 SSW	WS: 5 G:10 SSW	WS: 5 G:10 SW	WS: 6 G:11 SW	WS: 9 G:13 SW	WS: 9 G:13 SW	WS: 8 G:12 SW	WS: 8 G:11 SW	WS: 8 G:11 SSW	WS: 9 G:12 S	WS: 12 G:14 SSE	WS: 13 G:16 SSE	WS: 15 G:18 SSE	WS: 15 G:19 S	WS: 15 G:19 S	WS: 15 G:20 S	WS: 13 G:18 S	WS: 12 G:18 S	WS: 12 G:18 S	WS: 10 G:17 SSW				
Houston Pilots H - Morgans Point	WS: 5 G:6 SSW	WS: 8 G:9 SSW	WS: 12 G:13 SE	WS: 15 G:15 SSE	WS: 13 G:15 SSE	WS: 13 G:16 SSE	WS: 14 G:17 S	WS: 14 G:19 S	WS: 13 G:20 S	WS: 13 G:21 S	WS: 12 G:22 SSW	WS: 12 G:21 SSW	WS: 10 G:21 SSW	WS: 9 G:20 SSW	WS: 9 G:18 SSW	WS: 8 G:14 SSW	WS: 7 G:14 SSW	WS: 7 G:13 SSW	WS: 6 G:12 SSW	WS: 6 G:12 SSW	WS: 7 G:13 SW	WS: 9 G:15 SW	WS: 9 G:15 SW	WS: 8 G:12 SW	WS: 8 G:12 SW	WS: 8 G:11 SSW	WS: 8 G:11 SSW	WS: 10 G:13 SSE	WS: 13 G:16 SSE	WS: 14 G:18 SSE	WS: 15 G:19 S	WS: 15 G:19 S	WS: 16 G:20 S	WS: 14 G:19 S	WS: 13 G:19 S	WS: 13 G:19 S	WS: 12 G:18 SSW				
Houston Pilots G - 75/76	WS: 4 G:7 ESE	WS: 11 G:11 SE	WS: 14 G:15 SE	WS: 16 G:16 SSE	WS: 15 G:16 SSE	WS: 16 G:16 S	WS: 16 G:18 S	WS: 17 G:19 S	WS: 17 G:20 S	WS: 17 G:21 SSW	WS: 16 G:22 SSW	WS: 15 G:22 SSW	WS: 14 G:21 SSW	WS: 12 G:20 SSW	WS: 12 G:20 SSW	WS: 10 G:17 SSW	WS: 9 G:16 SSW	WS: 9 G:15 SSW	WS: 8 G:14 SSW	WS: 8 G:14 SSW	WS: 8 G:14 SW	WS: 9 G:15 SW	WS: 9 G:15 SW	WS: 8 G:12 SW	WS: 8 G:11 SSW	WS: 8 G:11 SSW	WS: 11 G:13 SSE	WS: 13 G:16 SSE	WS: 15 G:18 SSE	WS: 15 G:19 S	WS: 16 G:19 S	WS: 16 G:20 S	WS: 15 G:19 S	WS: 15 G:19 S	WS: 14 G:19 S	WS: 14 G:19 S	WS: 14 G:19 S				
Houston Pilots F - 63/64	WS: 4 G:7 ESE	WS: 10 G:10 SE	WS: 14 G:15 SSE	WS: 15 G:15 SSE	WS: 16 G:16 S	WS: 17 G:17 S	WS: 17 G:17 S	WS: 17 G:17 S	WS: 17 G:17 S	WS: 17 G:17 S	WS: 16 G:17 SSW	WS: 15 G:17 SSW	WS: 13 G:17 SSW	WS: 13 G:17 SSW	WS: 11 G:17 SSW	WS: 10 G:16 SSW	WS: 10 G:15 SSW	WS: 9 G:15 SSW	WS: 9 G:15 SSW	WS: 9 G:15 SW	WS: 9 G:15 SW	WS: 9 G:15 SW	WS: 9 G:15 SW	WS: 8 G:12 SW	WS: 8 G:11 SSW	WS: 9 G:11 SSW	WS: 12 G:14 SSE	WS: 14 G:16 SSE	WS: 15 G:18 SSE	WS: 16 G:19 S	WS: 16 G:19 S	WS: 16 G:20 S	WS: 16 G:19 S	WS: 16 G:19 S	WS: 15 G:19 S	WS: 15 G:19 S	WS: 14 G:19 S	WS: 14 G:19 S			
Houston Pilots E - 51/52	WS: 5 G:7 SSE	WS: 10 G:10 SSE	WS: 16 G:16 SSE	WS: 15 G:15 SSE	WS: 14 G:15 S	WS: 16 G:17 S	WS: 17 G:17 S	WS: 18 G:18 S	WS: 17 G:18 S	WS: 17 G:19 S	WS: 17 G:20 S	WS: 17 G:21 SSW	WS: 16 G:21 SSW	WS: 14 G:21 SSW	WS: 13 G:21 SSW	WS: 12 G:21 SSW	WS: 11 G:20 SSW	WS: 10 G:20 SSW	WS: 10 G:19 SSW	WS: 10 G:19 SSW	WS: 10 G:19 SW	WS: 10 G:19 SW	WS: 10 G:19 SW	WS: 9 G:16 SW	WS: 9 G:16 SW	WS: 8 G:13 SSW	WS: 8 G:12 SSW	WS: 10 G:14 S	WS: 14 G:17 S	WS: 15 G:18 S	WS: 16 G:19 S	WS: 16 G:20 S	WS: 17 G:20 S	WS: 16 G:19 S	WS: 16 G:19 S	WS: 15 G:19 S	WS: 15 G:19 S	WS: 14 G:19 S	WS: 14 G:19 S		
Houston Pilots D - 37/38	WS: 7 G:8 S	WS: 10 G:10 SSE	WS: 16 G:17 S	WS: 13 G:14 SSE	WS: 14 G:15 S	WS: 15 G:16 S	WS: 17 G:18 S	WS: 17 G:19 S	WS: 17 G:20 S	WS: 17 G:21 SSW	WS: 17 G:22 SSW	WS: 16 G:22 SSW	WS: 15 G:21 SSW	WS: 14 G:20 SSW	WS: 14 G:19 SSW	WS: 12 G:17 SSW	WS: 12 G:16 SSW	WS: 11 G:16 SSW	WS: 11 G:15 SSW	WS: 10 G:15 SSW	WS: 10 G:15 SW	WS: 10 G:15 SW	WS: 10 G:15 SW	WS: 10 G:14 SW	WS: 10 G:13 SW	WS: 10 G:13 SSW	WS: 11 G:13 S	WS: 12 G:14 S	WS: 14 G:16 S	WS: 15 G:17 S	WS: 16 G:18 S	WS: 16 G:19 S	WS: 17 G:20 S	WS: 17 G:20 S	WS: 16 G:19 S	WS: 16 G:19 S	WS: 15 G:19 S	WS: 15 G:19 S	WS: 14 G:19 S	WS: 14 G:19 S	
Houston Pilots C - 25/26	WS: 8 G:9 S	WS: 9 G:10 S	WS: 15 G:16 S	WS: 11 G:12 SSE	WS: 13 G:15 S	WS: 13 G:15 S	WS: 15 G:16 S	WS: 16 G:17 S	WS: 15 G:19 S	WS: 15 G:19 S	WS: 15 G:20 S	WS: 15 G:20 S	WS: 14 G:20 S	WS: 14 G:19 S	WS: 12 G:17 S	WS: 12 G:17 S	WS: 12 G:16 S	WS: 11 G:15 S	WS: 11 G:15 S	WS: 10 G:15 S	WS: 10 G:15 SW	WS: 10 G:15 SW	WS: 10 G:15 SW	WS: 10 G:14 SW	WS: 10 G:14 SW	WS: 10 G:13 SSW	WS: 11 G:13 S	WS: 12 G:14 S	WS: 13 G:16 S	WS: 14 G:17 S	WS: 15 G:18 S	WS: 16 G:19 S	WS: 16 G:19 S	WS: 16 G:19 S	WS: 16 G:19 S	WS: 15 G:19 S	WS: 15 G:19 S	WS: 14 G:19 S	WS: 14 G:19 S		
Houston Pilots B - 11/12	WS: 8 G:9 SSW	WS: 8 G:9 S	WS: 16 G:17 S	WS: 13 G:14 SSE	WS: 13 G:15 S	WS: 13 G:15 S	WS: 16 G:16 S	WS: 16 G:19 S	WS: 15 G:19 S	WS: 15 G:20 S	WS: 15 G:20 S	WS: 14 G:20 S	WS: 14 G:19 S	WS: 13 G:18 S	WS: 13 G:17 S	WS: 12 G:16 S	WS: 12 G:16 S	WS: 11 G:15 S	WS: 11 G:15 S	WS: 10 G:15 S	WS: 10 G:15 SW	WS: 10 G:15 SW	WS: 10 G:15 SW	WS: 10 G:14 SW	WS: 10 G:14 SW	WS: 10 G:13 SSW	WS: 11 G:13 S	WS: 12 G:14 S	WS: 13 G:16 S	WS: 14 G:17 S	WS: 15 G:18 S	WS: 16 G:19 S	WS: 16 G:19 S	WS: 16 G:19 S	WS: 16 G:19 S	WS: 15 G:19 S	WS: 15 G:19 S	WS: 14 G:19 S	WS: 14 G:19 S		
Houston Pilots A - 1 & 2 Bravo	WS: 6 G:7 S	WS: 6 G:7 S	WS: 24 G:25 S	WS: 10 G:11 S	WS: 12 G:14 S	WS: 13 G:14 S	WS: 15 G:16 S	WS: 17 G:18 S	WS: 18 G:19 S	WS: 18 G:20 S	WS: 18 G:20 S	WS: 18 G:20 S	WS: 18 G:20 S	WS: 18 G:19 S	WS: 16 G:17 S	WS: 15 G:17 S	WS: 14 G:18 S	WS: 13 G:17 S	WS: 13 G:16 S	WS: 12 G:16 S	WS: 12 G:16 SW	WS: 12 G:16 SW	WS: 12 G:16 SW	WS: 11 G:14 SW	WS: 11 G:14 SW	WS: 10 G:13 SSW	WS: 11 G:13 S	WS: 12 G:14 S	WS: 14 G:16 S	WS: 15 G:17 S	WS: 16 G:18 S	WS: 17 G:19 S	WS: 17 G:20 S	WS: 17 G:20 S	WS: 17 G:20 S	WS: 16 G:19 S	WS: 16 G:19 S	WS: 15 G:19 S	WS: 15 G:19 S	WS: 14 G:19 S	WS: 14 G:19 S

See slides below for official thoughts on winds.

Houston Pilots: Sun. 7/17/2022



Forecast Discussion

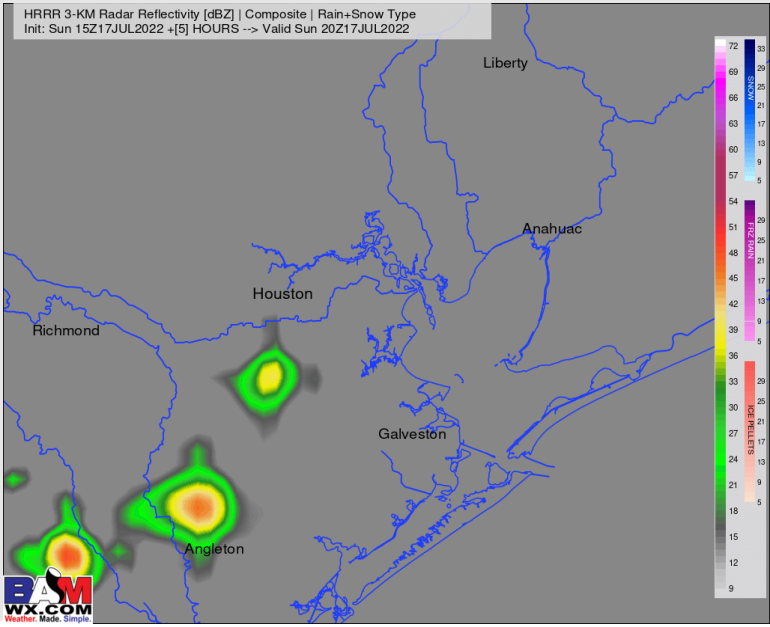
Precip: Very isolated chances, near 10-20%, of a brief passing shower/ storm still remains possible through about 6 PM. Mostly dry conditions are anticipated throughout the day. Coverage is expected to stay rather hit and miss.

Wind: Winds look to pick up into the afternoon and move back out of the S/SSW, especially after 2-3 PM back to 10 – 15 MPH with gusts to 15 – 20 MPH. There may be a few instances between 4-10 PM of sustained winds reaching 15-20 MPH between Morgan's Point & the Boarding station.

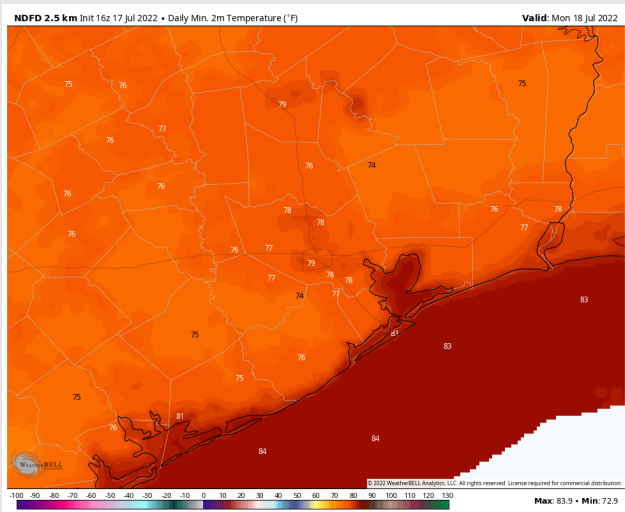
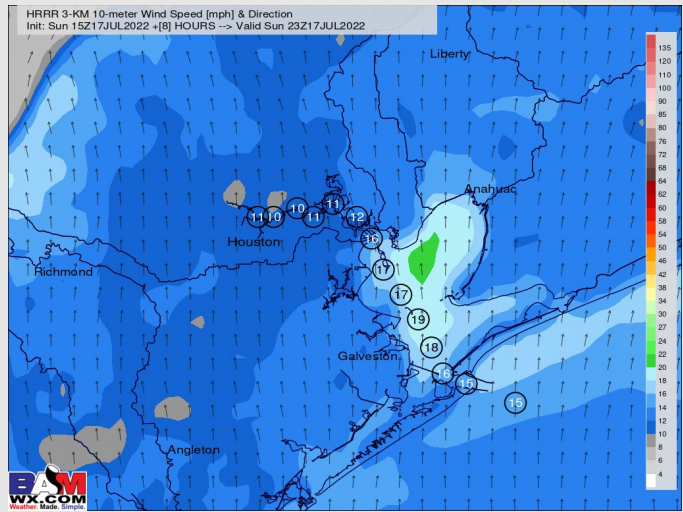
Temps: Low temperatures into tomorrow morning remain into the lower to mid 80's F over open waters.

Visibility: Not anticipating any fog concerns at this time.

Precip Forecast: 3 PM CT



Sustained Winds
6 PM CT



Low Temps
SUN AM

Houston Pilots: Mon. 7/18/2022

Forecast Discussion

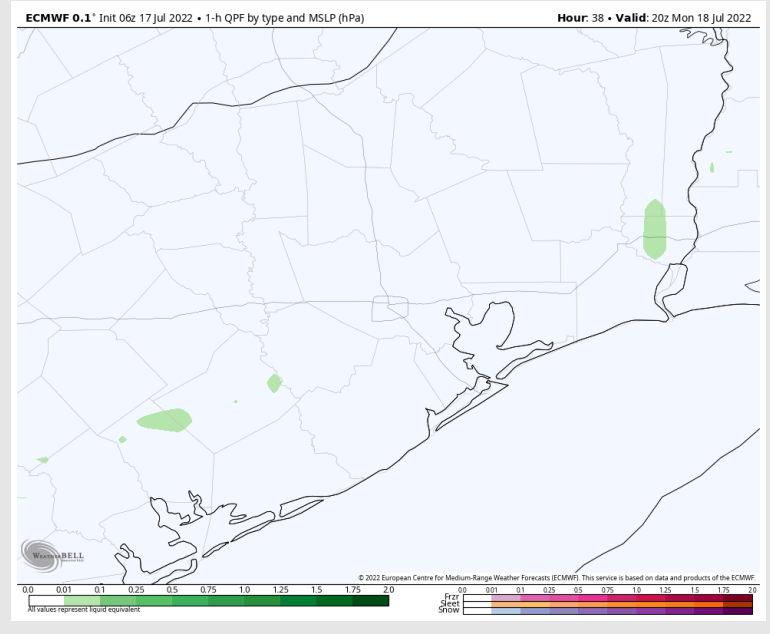
Precip Forecast: 3 PM CT

Precip: Data has backed off even more on the already very minor chances for tomorrow. Anticipate mostly dry conditions outside of a ~5% of a very isolated shower.

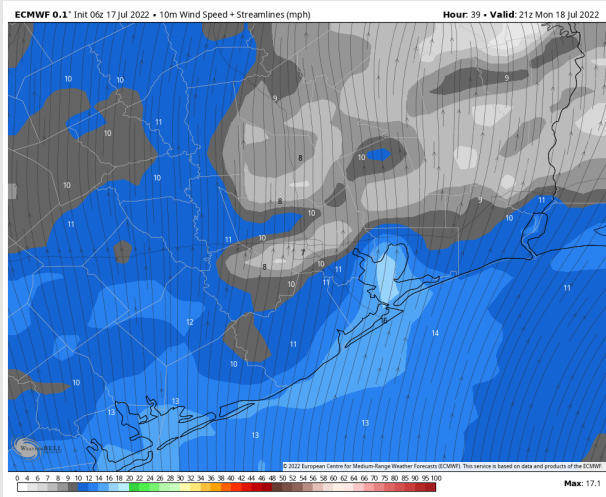
Wind: Winds in the AM hours likely weaken a touch to 8 – 13 MPH sustained out of the SW before picking up into the afternoon (especially after 2 PM) from the SSW around 13 – 18 MPH (gusts to 18 – 23 MPH) where they should continue for the rest of the day.

Temps: Highs likely reach the upper 80s to low 90s F for most stations. “Feels-like” likely get into the 100’s F.

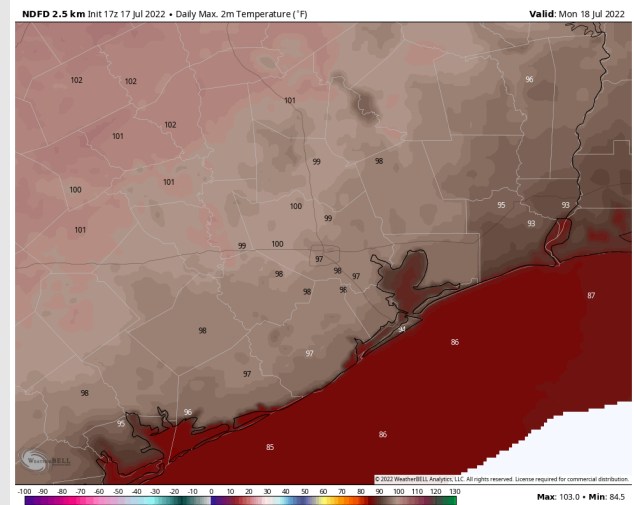
Visibility: Not anticipating any fog concerns at this time.



Wind Speed
4 PM CT



High Temps
Monday



Houston Pilots: Tue. 7/19/2022



Forecast Discussion

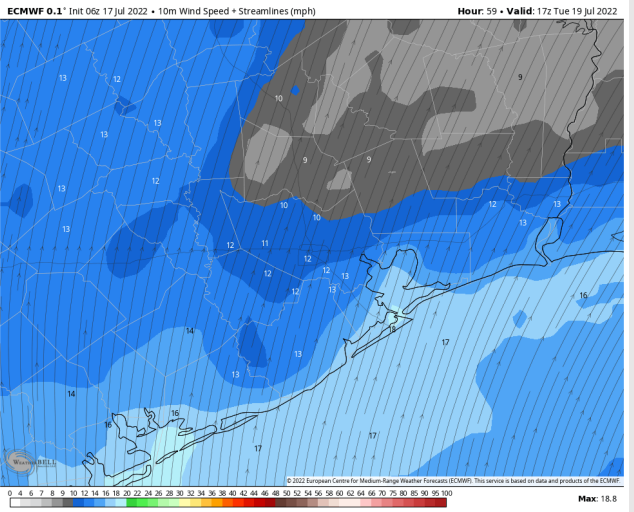
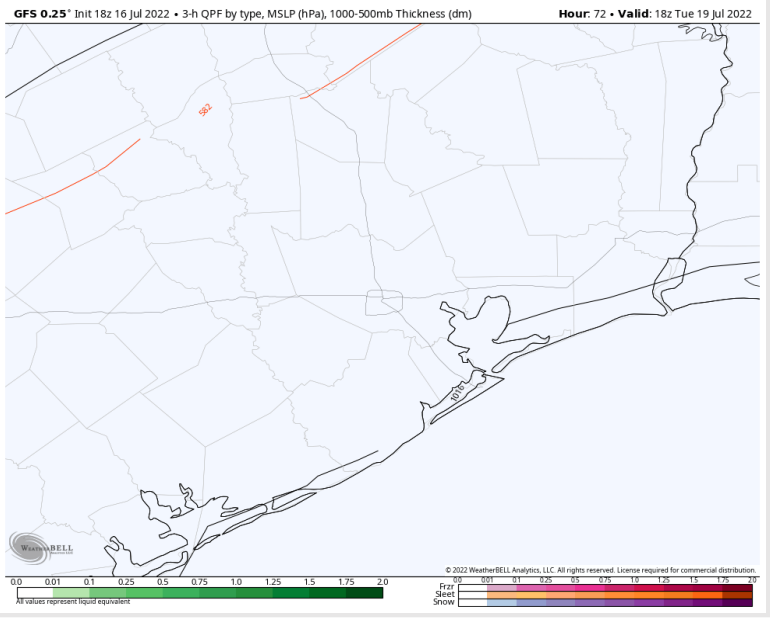
Precip: Anticipating dry conditions for Tuesday.

Wind: Winds look to be 13-18 MPH sustained out of the SW throughout Tuesday with gusts to 25 MPH possible

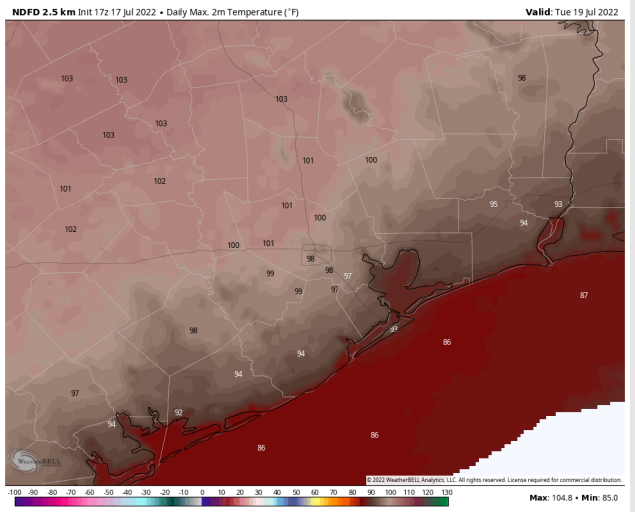
Temps: Temps likely reach the upper 80s to low 90s F, with stations north of Morgan's Point likely into the mid to upper 90s F. Once again, feels like temperatures look to get into the 100's F.

Visibility: No fog conditions anticipated at this time.

Precip Forecast: 1 PM CT

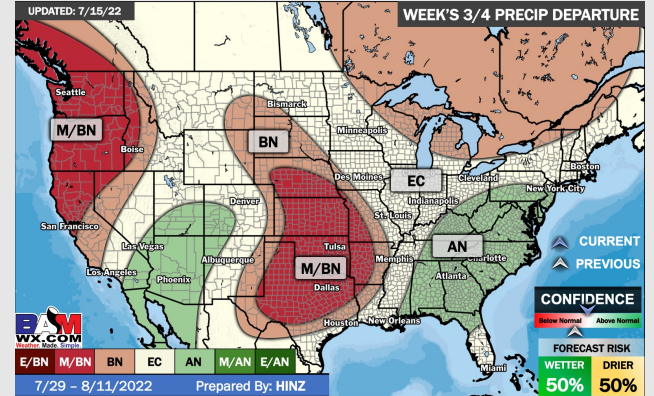
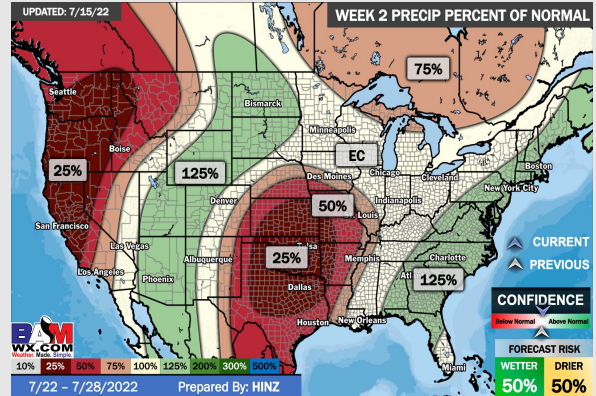
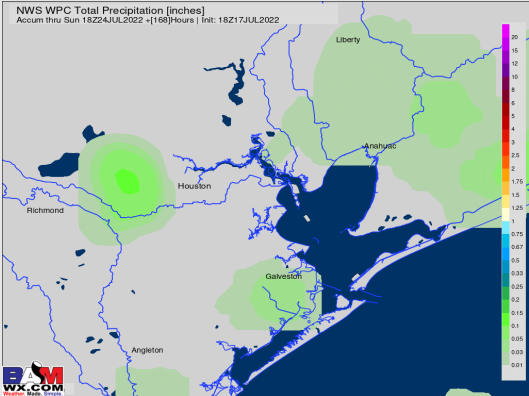
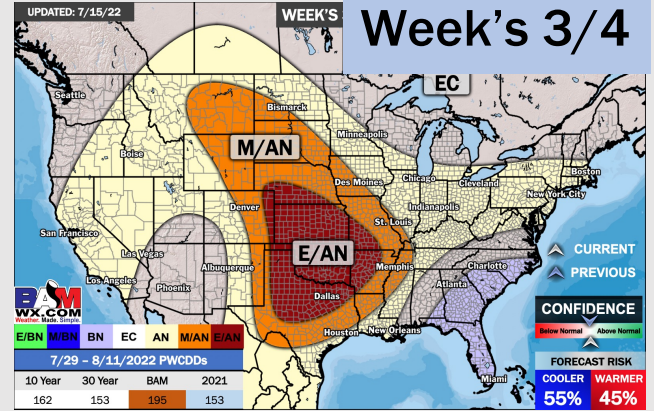
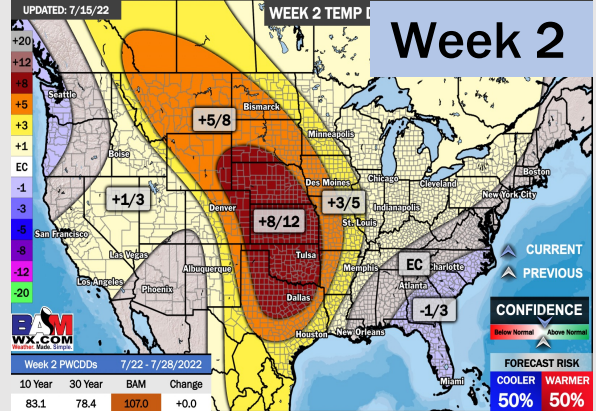
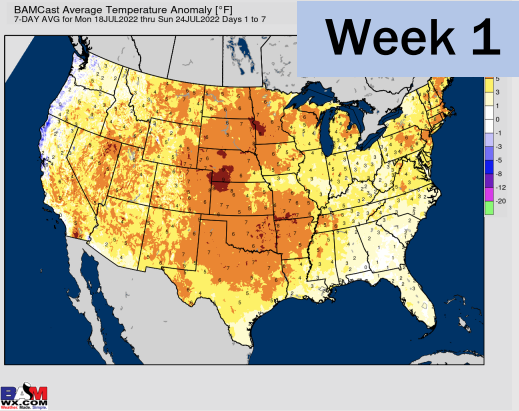


Sustained Winds
12 PM CT



High Temps
Tuesday

Houston Pilots: 7/17/22



- Only very minor precipitation chances the next 7 days as the weather pattern turns back warmer and quieter.
- Week 2 likely features above normal risks for temperatures and below normal precipitation risks. Heat during this time will likely be more pronounced vs the next 7 days.
- The weeks 3/4 timeframe into August looks to feature normal temperatures and normal risks for precip.