

Houston Pilots Forecast Package

Houston Pilots

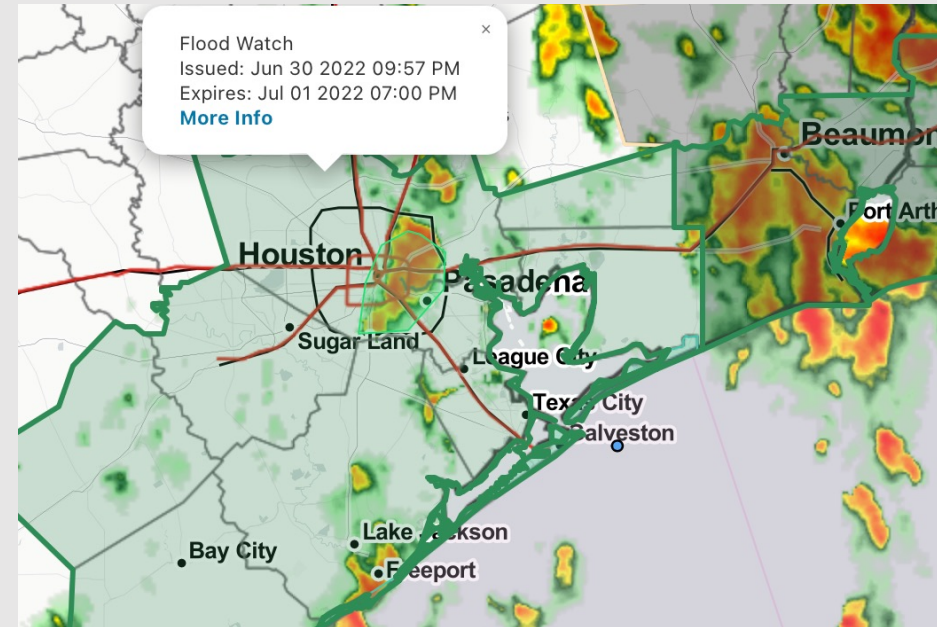
Updated: 6:30 AM CT

Friday, July 1st, 2022

Forecaster: Alyssa McClung

Weather Headlines

- Reduced visibility down to a couple miles is possible within any of these heavy pockets of precip in the next couple of days.
- Continued scattered shower and thunderstorm chances stick around until Saturday before this weakly organized wave of Gulf moisture moves Northeast.
- Heavy rainfall rates of 0.5"-2" an hour will be possible as activity continues to spread across the region
- Latest details on tropical activity on the slides below.



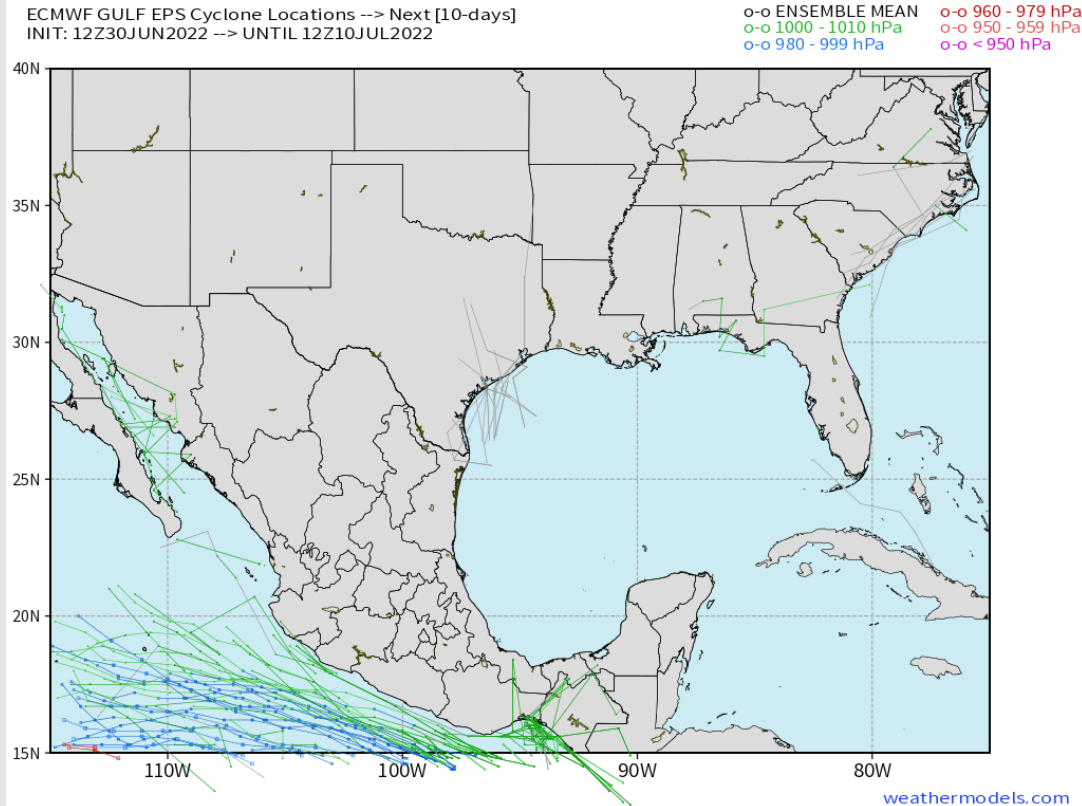
Radar/ NWS Alerts: 6:00 AM CT



As always, please do not hesitate to reach out to us with any forecast questions via the chat option on the Weather Porthole or our on-call number, **(317)-560-8122** press 1 for forecast questions.

Houston Pilots Extended Range Tropical Report

Various model tracks next 7 days



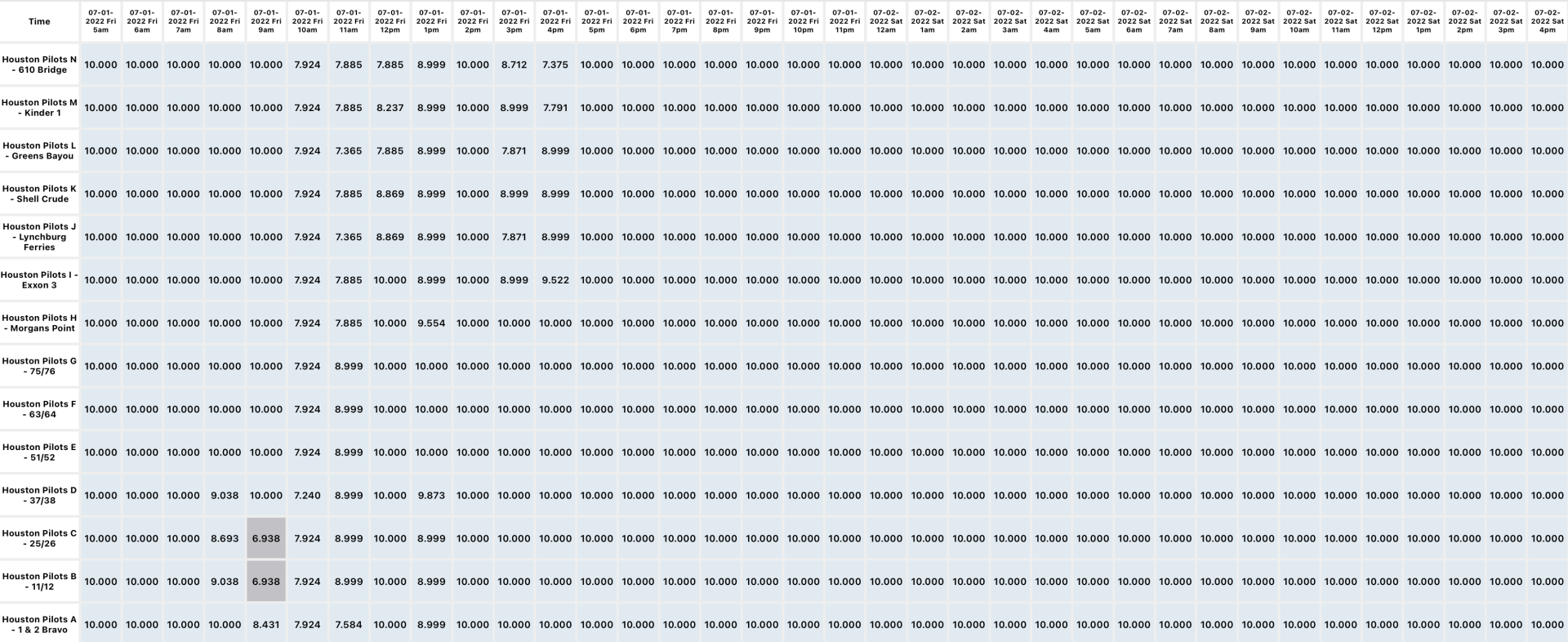
Outside of the loosely organized wave near SE TX providing rain over the next few days, no tropical threats are being noted for SE TX over the next 7-10 days.

Confidence

Above
Normal

Below
Normal

The image contains two logos. On the left is the logo for BAM WX.COM, featuring the letters 'BAM' in a stylized font with a white 'A' and a black shadow, followed by 'WX.COM' in black and 'Weather. Made. Simple.' in blue and red below it. On the right is the logo for Houston Pilots, featuring a large red 'H' with a black outline and the text 'Houston Pilots' in white to its right.



Houston Pilots Wind Report



Confidence

Above Normal

Below Normal

Sustained wind 13 MPH

Gusts 18 MPH

Wind from the N

Example

WS: 13
G:18
N

Time	07-01-2022 Fri 5am	07-01-2022 Fri 6am	07-01-2022 Fri 7am	07-01-2022 Fri 8am	07-01-2022 Fri 9am	07-01-2022 Fri 10am	07-01-2022 Fri 11am	07-01-2022 Fri 12pm	07-01-2022 Fri 1pm	07-01-2022 Fri 2pm	07-01-2022 Fri 3pm	07-01-2022 Fri 4pm	07-01-2022 Fri 5pm	07-01-2022 Fri 6pm	07-01-2022 Fri 7pm	07-01-2022 Fri 8pm	07-01-2022 Fri 9pm	07-01-2022 Fri 10pm	07-01-2022 Fri 11pm	07-02-2022 Sat 12am	07-02-2022 Sat 1am	07-02-2022 Sat 2am	07-02-2022 Sat 3am	07-02-2022 Sat 4am	07-02-2022 Sat 5am	07-02-2022 Sat 6am	07-02-2022 Sat 7am	07-02-2022 Sat 8am	07-02-2022 Sat 9am	07-02-2022 Sat 10am	07-02-2022 Sat 11am	07-02-2022 Sat 12pm	07-02-2022 Sat 1pm	07-02-2022 Sat 2pm	07-02-2022 Sat 3pm	07-02-2022 Sat 4pm		
Houston Pilots N - 610 Bridge	WS: 3 G:9 ESE	WS: 3 G:16 SSW	WS: 1 G:7 SSE	WS: 3 G:10 WSW	WS: 3 G:10 SW	WS: 5 G:7 S	WS: 3 G:6 S	WS: 5 G:3 SSE	WS: 4 G:6 S	WS: 6 G:8 S	WS: 6 G:7 SSE	WS: 6 G:8 SSE	WS: 8 G:10 SSE	WS: 4 G:8 SE	WS: 7 G:10 SE	WS: 7 G:13 SSE	WS: 6 G:11 SSE	WS: 5 G:10 SSE	WS: 5 G:9 SSE	WS: 5 G:9 SSE	WS: 4 G:9 S	WS: 4 G:9 S	WS: 4 G:9 S	WS: 4 G:9 S	WS: 4 G:8 S	WS: 4 G:8 S	WS: 4 G:7 S	WS: 6 G:10 SSW	WS: 8 G:13 SSW	WS: 8 G:13 SSW	WS: 8 G:13 SSW	WS: 8 G:12 SSW	WS: 7 G:12 SSW	WS: 8 G:12 S	WS: 8 G:14 S	WS: 8 G:14 S	WS: 8 G:14 S	
Houston Pilots M - Kinder 1	WS: 3 G:10 E	WS: 3 G:16 SSW	WS: 1 G:8 SSW	WS: 3 G:10 SW	WS: 3 G:10 SSW	WS: 5 G:8 S	WS: 4 G:7 SSW	WS: 1 G:3 SSE	WS: 4 G:6 S	WS: 6 G:8 S	WS: 6 G:8 SSE	WS: 6 G:8 SSE	WS: 7 G:10 SSE	WS: 4 G:8 SE	WS: 7 G:10 ESE	WS: 7 G:13 SSE	WS: 6 G:11 SSE	WS: 5 G:10 SSE	WS: 5 G:9 SSE	WS: 4 G:9 SSE	WS: 4 G:8 S	WS: 4 G:9 S	WS: 4 G:9 S	WS: 4 G:8 S	WS: 4 G:8 S	WS: 4 G:7 SSW	WS: 6 G:10 SSW	WS: 8 G:13 SSW	WS: 8 G:13 SSW	WS: 8 G:13 SSW	WS: 8 G:12 SSW	WS: 7 G:12 SSW	WS: 8 G:12 S	WS: 8 G:14 S	WS: 8 G:14 SSE	WS: 9 G:14 S		
Houston Pilots L - Greens Bayou	WS: 2 G:8 ENE	WS: 2 G:16 SSW	WS: 2 G:10 SW	WS: 3 G:10 SSW	WS: 2 G:10 SSW	WS: 4 G:7 SSE	WS: 4 G:7 SSW	WS: 2 G:3 SSE	WS: 5 G:6 SSE	WS: 5 G:7 SSE	WS: 7 G:9 SE	WS: 5 G:7 SSE	WS: 7 G:10 SSE	WS: 4 G:8 SE	WS: 7 G:10 ESE	WS: 7 G:12 SSE	WS: 6 G:11 SSE	WS: 5 G:10 SSE	WS: 5 G:9 SSE	WS: 4 G:9 SSE	WS: 4 G:8 S	WS: 4 G:8 S	WS: 4 G:9 S	WS: 4 G:9 S	WS: 4 G:8 S	WS: 4 G:8 S	WS: 4 G:7 SSW	WS: 6 G:10 SSW	WS: 8 G:13 SSW	WS: 8 G:13 SSW	WS: 8 G:13 SSW	WS: 7 G:12 SSW	WS: 7 G:12 SSW	WS: 8 G:12 S	WS: 8 G:13 S	WS: 9 G:14 SSE	WS: 9 G:14 S	
Houston Pilots K - Shell Crude	WS: 2 G:11 ESE	WS: 3 G:17 SW	WS: 2 G:10 SSW	WS: 3 G:11 SSW	WS: 3 G:11 SSW	WS: 4 G:9 S	WS: 4 G:7 SSW	WS: 1 G:4 SSE	WS: 4 G:6 SSE	WS: 6 G:8 SSE	WS: 7 G:9 SSE	WS: 5 G:7 SSE	WS: 6 G:10 SE	WS: 6 G:8 SE	WS: 7 G:10 SE	WS: 7 G:12 SSE	WS: 6 G:11 SSE	WS: 6 G:11 SSE	WS: 5 G:9 SSE	WS: 4 G:10 SSE	WS: 4 G:8 S	WS: 4 G:9 S	WS: 4 G:9 S	WS: 4 G:10 S	WS: 4 G:9 S	WS: 4 G:8 S	WS: 4 G:8 SSW	WS: 6 G:11 SSW	WS: 8 G:13 SSW	WS: 8 G:13 SSW	WS: 8 G:13 SSW	WS: 7 G:12 SSW	WS: 8 G:12 S	WS: 8 G:14 S	WS: 8 G:14 SSE	WS: 10 G:14 SSE	WS: 10 G:15 S	
Houston Pilots J - Lynchburg Ferries	WS: 1 G:10 S	WS: 2 G:15 WSW	WS: 2 G:10 S	WS: 3 G:10 SSW	WS: 3 G:10 SSW	WS: 3 G:8 S	WS: 3 G:6 S	WS: 1 G:3 SE	WS: 4 G:6 SSE	WS: 6 G:7 SSE	WS: 7 G:10 SSE	WS: 5 G:7 SSE	WS: 6 G:10 SE	WS: 6 G:8 SE	WS: 6 G:10 SSE	WS: 6 G:12 SSE	WS: 6 G:11 SSE	WS: 6 G:11 SSE	WS: 5 G:10 SSE	WS: 5 G:10 SSE	WS: 5 G:9 S	WS: 5 G:9 S	WS: 5 G:10 S	WS: 5 G:10 S	WS: 5 G:9 SSW	WS: 5 G:9 SSW	WS: 4 G:9 SSW	WS: 4 G:11 SSW	WS: 6 G:13 SSW	WS: 8 G:13 SSW	WS: 8 G:13 SSW	WS: 8 G:12 SSW	WS: 8 G:12 S	WS: 9 G:14 S	WS: 9 G:14 SSE	WS: 10 G:14 SSE	WS: 10 G:14 SSE	
Houston Pilots I - Exxon 3	WS: 3 G:13 SW	WS: 3 G:16 WSW	WS: 3 G:9 S	WS: 3 G:10 SSW	WS: 3 G:10 SSW	WS: 3 G:8 S	WS: 3 G:8 S	WS: 3 G:4 SSE	WS: 1 G:6 S	WS: 7 G:9 S	WS: 6 G:11 SSE	WS: 5 G:8 SSE	WS: 6 G:10 SE	WS: 6 G:8 SE	WS: 7 G:11 SSE	WS: 8 G:13 SSE	WS: 7 G:12 SSE	WS: 7 G:11 S	WS: 6 G:12 S	WS: 6 G:12 S	WS: 6 G:11 S	WS: 6 G:10 S	WS: 6 G:10 S	WS: 6 G:11 S	WS: 6 G:11 S	WS: 5 G:11 SSW	WS: 5 G:11 SSW	WS: 5 G:11 SSW	WS: 5 G:11 SSW	WS: 7 G:12 SSW	WS: 8 G:13 SSW	WS: 8 G:13 SSW	WS: 8 G:13 SSW	WS: 8 G:12 SSW	WS: 9 G:12 SSW	WS: 10 G:14 S	WS: 11 G:14 SSE	WS: 11 G:15 S
Houston Pilots H - Morgans Point	WS: 7 G:15 SSW	WS: 8 G:18 SW	WS: 4 G:10 SW	WS: 3 G:10 SW	WS: 4 G:10 SW	WS: 3 G:8 WSW	WS: 5 G:9 S	WS: 1 G:5 S	WS: 4 G:7 S	WS: 8 G:11 SSW	WS: 6 G:9 SSE	WS: 5 G:9 S	WS: 6 G:10 SE	WS: 7 G:10 SSE	WS: 9 G:13 SSE	WS: 8 G:14 SSE	WS: 9 G:15 S	WS: 8 G:14 S	WS: 8 G:14 S	WS: 8 G:14 S	WS: 8 G:14 S	WS: 8 G:15 S	WS: 8 G:15 SSW	WS: 7 G:14 SSW	WS: 7 G:14 SSW	WS: 7 G:14 SSW	WS: 7 G:14 SSW	WS: 9 G:14 SSW	WS: 8 G:13 SSW	WS: 9 G:13 SSW	WS: 9 G:12 SSW	WS: 10 G:13 S	WS: 11 G:14 S	WS: 11 G:14 SSE	WS: 11 G:15 S	WS: 11 G:15 S		
Houston Pilots G - 75/76	WS: 14 G:17 S	WS: 14 G:21 SSW	WS: 7 G:12 WSW	WS: 6 G:10 W	WS: 6 G:10 SW	WS: 6 G:10 WSW	WS: 6 G:13 SSW	WS: 3 G:7 SSW	WS: 3 G:8 S	WS: 12 G:12 SSW	WS: 6 G:10 S	WS: 6 G:11 S	WS: 6 G:9 SSE	WS: 6 G:12 S	WS: 13 G:15 S	WS: 11 G:16 S	WS: 11 G:16 S	WS: 10 G:16 S	WS: 10 G:16 S	WS: 10 G:16 S	WS: 10 G:17 S	WS: 10 G:17 SSW	WS: 10 G:17 SSW	WS: 10 G:16 SSW	WS: 9 G:16 SSW	WS: 9 G:15 SSW	WS: 9 G:15 SSW	WS: 9 G:14 SSW	WS: 9 G:14 SSW	WS: 9 G:14 SSW	WS: 9 G:13 SSW	WS: 10 G:14 S	WS: 10 G:14 S	WS: 11 G:15 S	WS: 11 G:15 SSE	WS: 12 G:16 S		
Houston Pilots F - 63/64	WS: 15 G:19 S	WS: 15 G:21 SSW	WS: 8 G:11 WSW	WS: 7 G:9 WSW	WS: 10 G:12 SW	WS: 10 G:17 SW	WS: 7 G:16 SSW	WS: 6 G:8 SSW	WS: 8 G:10 SSW	WS: 12 G:14 SSW	WS: 6 G:10 SSW	WS: 8 G:12 S	WS: 9 G:10 S	WS: 11 G:12 S	WS: 14 G:17 S	WS: 12 G:17 S	WS: 12 G:17 S	WS: 12 G:17 S	WS: 12 G:17 S	WS: 12 G:17 S	WS: 12 G:18 S	WS: 12 G:18 S	WS: 12 G:18 S	WS: 12 G:18 S	WS: 12 G:18 S	WS: 11 G:17 SSW	WS: 10 G:16 SSW	WS: 10 G:15 SSW	WS: 10 G:15 SSW	WS: 10 G:14 SSW	WS: 9 G:14 SSW	WS: 10 G:14 SSW	WS: 10 G:14 SSW	WS: 11 G:15 SSW	WS: 11 G:15 SSW	WS: 12 G:16 S	WS: 12 G:16 S	
Houston Pilots E - 51/52	WS: 16 G:20 S	WS: 13 G:19 SSW	WS: 7 G:9 SW	WS: 15 G:18 SSW	WS: 15 G:18 SSW	WS: 13 G:23 SW	WS: 9 G:17 SSW	WS: 10 G:12 SSW	WS: 11 G:14 SSW	WS: 12 G:15 SSW	WS: 9 G:13 SSW	WS: 11 G:13 SSW	WS: 11 G:12 SSW	WS: 15 G:18 S	WS: 13 G:17 S	WS: 13 G:17 S	WS: 13 G:18 S	WS: 13 G:18 S	WS: 13 G:18 S	WS: 13 G:18 S	WS: 13 G:18 S	WS: 13 G:18 S	WS: 13 G:18 S	WS: 13 G:18 S	WS: 12 G:18 SSW	WS: 11 G:18 SSW	WS: 11 G:18 SSW	WS: 11 G:18 SSW	WS: 11 G:18 SSW	WS: 11 G:18 SSW	WS: 11 G:18 SSW	WS: 10 G:15 SSW	WS: 11 G:15 SSW	WS: 12 G:16 SSE	WS: 13 G:16 S			
Houston Pilots D - 37/38	WS: 15 G:19 S	WS: 11 G:17 SSW	WS: 5 G:9 SSW	WS: 22 G:26 SSW	WS: 19 G:26 SSW	WS: 15 G:24 SSW	WS: 11 G:19 SW	WS: 15 G:17 SSW	WS: 14 G:16 WSW	WS: 12 G:15 SSW	WS: 12 G:14 SSW	WS: 10 G:13 SSW	WS: 11 G:13 SSW	WS: 14 G:18 S	WS: 13 G:17 S	WS: 13 G:17 S	WS: 13 G:18 S	WS: 13 G:18 S	WS: 13 G:18 S	WS: 13 G:18 S	WS: 13 G:18 S	WS: 13 G:18 S	WS: 13 G:18 S	WS: 14 G:19 SSW	WS: 13 G:18 SSW	WS: 12 G:17 SSW	WS: 12 G:17 SSW	WS: 12 G:17 SSW	WS: 12 G:17 SSW	WS: 11 G:16 SSW	WS: 11 G:15 SSW	WS: 12 G:15 SSW	WS: 12 G:15 SSW	WS: 11 G:14 SSW	WS: 11 G:15 SSW	WS: 12 G:15 SSW	WS: 13 G:16 S	
Houston Pilots C - 25/26	WS: 13 G:18 S	WS: 9 G:15 SSW	WS: 6 G:12 SSW	WS: 17 G:23 SSW	WS: 18 G:25 SSW	WS: 15 G:25 SSW	WS: 13 G:21 SSW	WS: 16 G:21 SSW	WS: 15 G:19 SSW	WS: 9 G:14 SSW	WS: 12 G:14 SSW	WS: 10 G:15 SSW	WS: 10 G:14 SSW	WS: 11 G:17 SSW	WS: 13 G:17 S	WS: 13 G:18 S	WS: 13 G:18 S	WS: 13 G:18 S	WS: 13 G:18 S	WS: 13 G:18 S	WS: 13 G:18 S	WS: 14 G:18 S	WS: 14 G:19 SSW	WS: 15 G:19 SSW	WS: 14 G:18 SSW	WS: 13 G:17 SSW	WS: 12 G:17 SSW	WS: 12 G:17 SSW	WS: 11 G:16 SSW	WS: 12 G:16 SSW	WS: 12 G:16 SSW	WS: 12 G:16 SSW	WS: 11 G:14 SSW	WS: 11 G:14 SSW	WS: 12 G:15 SSW	WS: 12 G:15 SSW		
Houston Pilots B - 11/12	WS: 14 G:18 SSW	WS: 10 G:18 S	WS: 10 G:16 SSW	WS: 16 G:22 SSW	WS: 14 G:20 SSW	WS: 14 G:25 SSW	WS: 16 G:24 SSW	WS: 16 G:23 SSW	WS: 17 G:21 SSW	WS: 8 G:14 SSW	WS: 13 G:15 SSW	WS: 13 G:15 SSW	WS: 11 G:14 SSW	WS: 10 G:14 SSW	WS: 11 G:16 SSW	WS: 13 G:18 S	WS: 13 G:18 S	WS: 14 G:18 S	WS: 15 G:19 S	WS: 15 G:18 S	WS: 15 G:19 S	WS: 16 G:19 S	WS: 16 G:19 S	WS: 15 G:18 SSW	WS: 14 G:18 SSW	WS: 13 G:17 SSW	WS: 13 G:17 SSW	WS: 13 G:17 SSW	WS: 13 G:17 SSW	WS: 12 G:17 SSW	WS: 12 G:16 SSW	WS: 11 G:14 SSW	WS: 11 G:15 SSW	WS: 11 G:14 SSW	WS: 12 G:15 SSW	WS: 12 G:15 SSW		
Houston Pilots A - 1 & 2 Bravo	WS: 19 G:22 SSW	WS: 16 G:22 SSW	WS: 17 G:21 SSW	WS: 23 G:25 SSW	WS: 24 G:28 SSW	WS: 13 G:20 SSW	WS: 15 G:24 SSW	WS: 17 G:21 SSW	WS: 23 G:25 SSW	WS: 14 G:17 SSW	WS: 13 G:17 SSW	WS: 15 G:16 SSW	WS: 13 G:16 SSW	WS: 11 G:15 SSW	WS: 13 G:16 S	WS: 14 G:17 S	WS: 15 G:18 S	WS: 15 G:19 S	WS: 15 G:18 S	WS: 15 G:19 S	WS: 16 G:19 S	WS: 16 G:19 S	WS: 16 G:19 S	WS: 16 G:19 S	WS: 15 G:18 SSW	WS: 14 G:18 SSW	WS: 15 G:18 SSW	WS: 15 G:17 SSW	WS: 14 G:17 SSW	WS: 14 G:17 SSW	WS: 13 G:17 SSW	WS: 13 G:17 SSW	WS: 12 G:15 SSW	WS: 11 G:14 SSW	WS: 11 G:14 SSW	WS: 11 G:14 SSW	WS: 12 G:15 SSW	

See slides below for official thoughts on winds.

Houston Pilots: Fri. 7/1/2022

Forecast Discussion

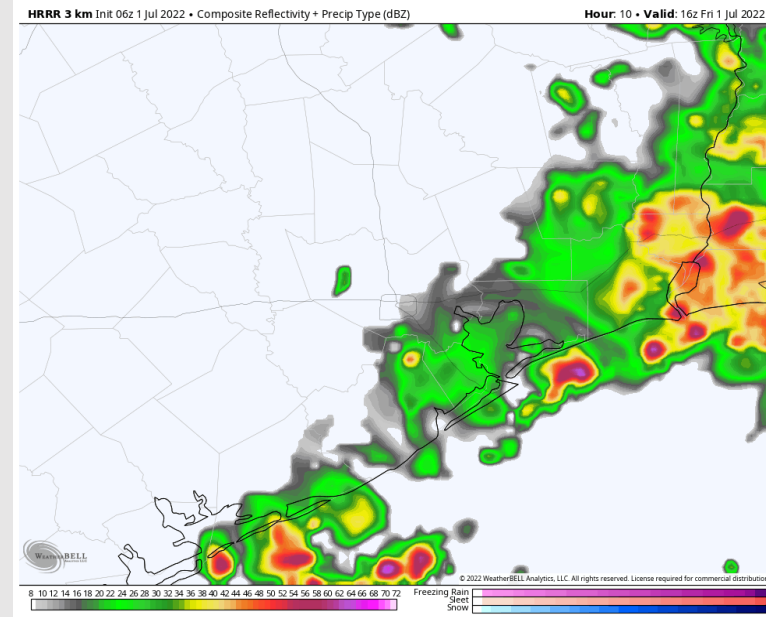
Precip: Heavy rain/t-storms will continue into the late morning. By 12PM today, heavy rain/t-storms are expected to break up and become scattered with ~50% chances. By late afternoon, chances decrease to ~20% as system progresses farther NE out of Texas. Scattered shower/storm chances will begin to increase again after 10PM into Saturday morning. Heavy to moderate rain, lightning, strong wind gusts and reduced visibility are possible under any of these cells.

Wind: "General" winds look to remain 15-20 MPH mostly out of the S/SSW throughout the day today with gusts up to 25 MPH possible. Wind gusts favored to be 25-30 MPH inside the strongest cells. Stations north of Morgan's Point likely see slightly weaker winds as system progresses further northeastward.

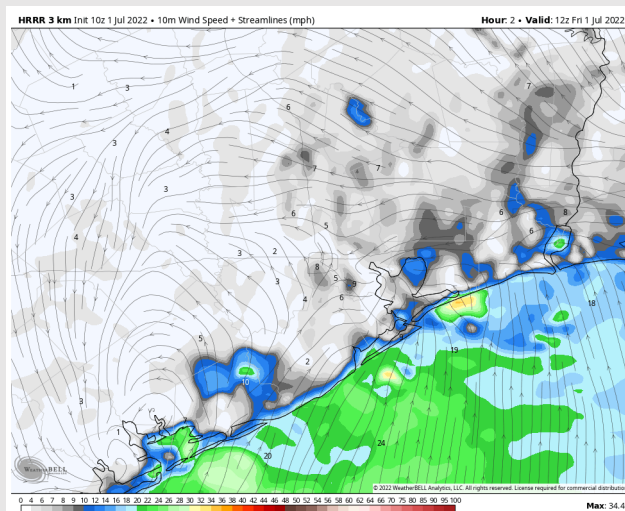
Temps: Temps to reach the lower to mid 80's.

Visibility: No fog conditions anticipated at this time.

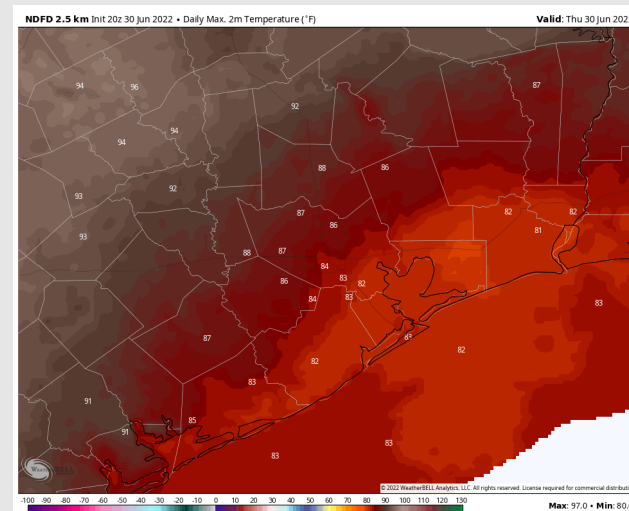
Precip Forecast: 11 AM CT



Wind Gusts
7 AM CT



High Temps
Friday



Houston Pilots: sat. 7/2/2022

Forecast Discussion

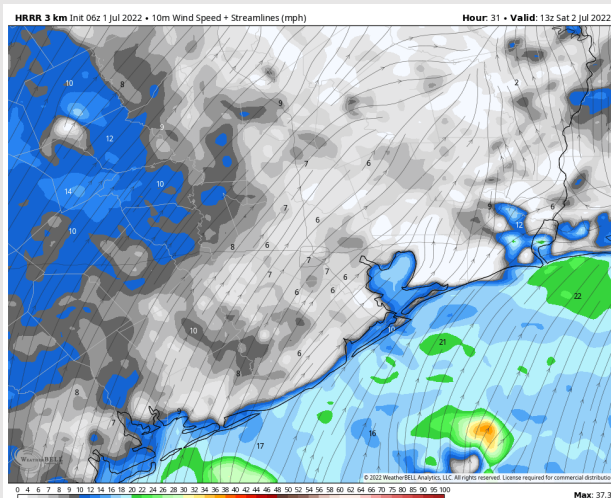
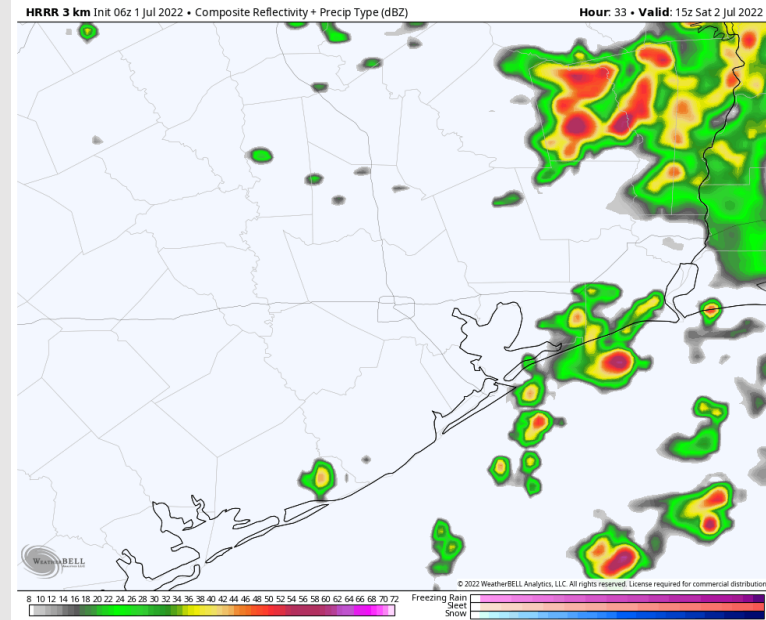
Precip: Scattered t-storms/showers will be possible early Saturday AM through the early PM, before becoming more isolated in the 2-5PM window. Beyond 5PM favoring precip to shut off.

Wind: Winds likely continue at 13-18MPH out of the SW through 8AM, veering S at 10-15MPH from 8AM into Saturday evening. An occasional higher gust of up to 25MPH will be possible during the morning hours under any one of these cells.

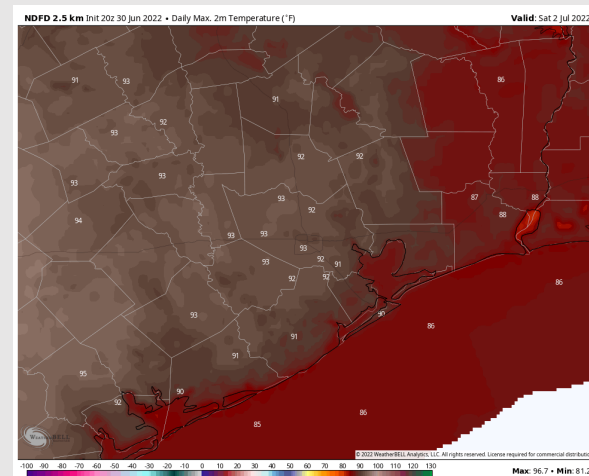
Temps: High temps anticipated to be in the upper 80's, lower 90's.

Visibility: Not anticipating fog at this time for our stations.

Precip Forecast: 10 AM CT



Wind Speed:
8 AM CT



High Temps
Sat

Houston Pilots: Sun. 7/3/2022

Forecast Discussion

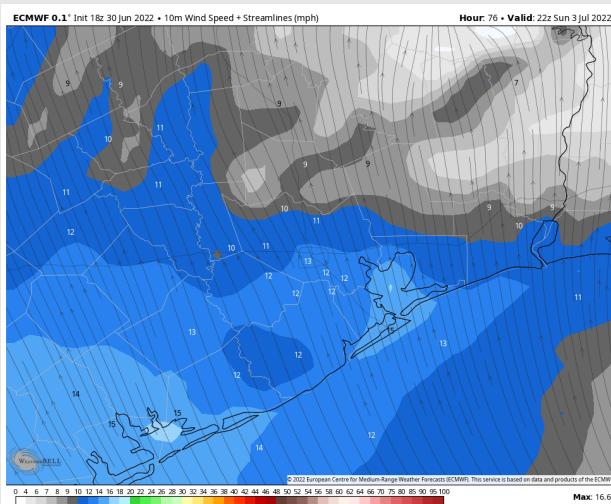
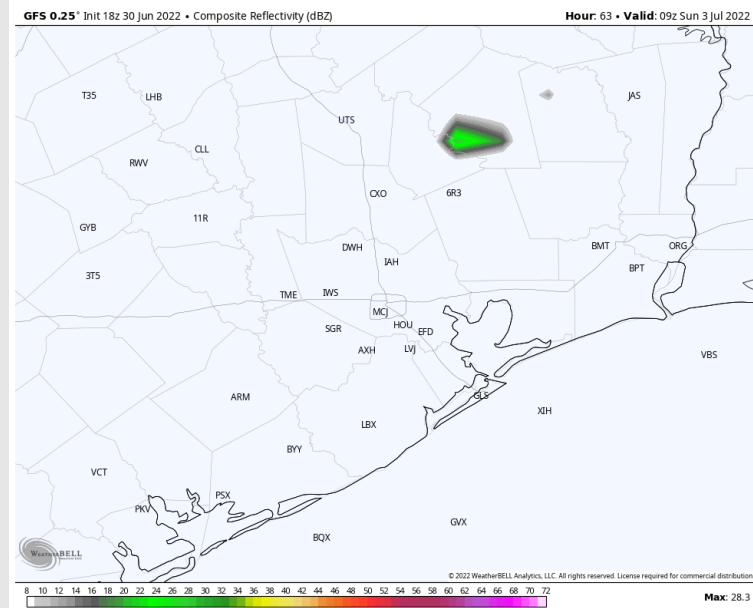
Precip: Favoring dry conditions for Sunday.

Wind: Sustained Winds of 15-20MPH out of the S will decrease to 5-10MPH by 7AM. From 3PM into Sunday overnight, sustained winds will slightly veer SSE at 10-15MPH. An occasional gust of up to 20-25MPH will be possible, especially during the early morning hours.

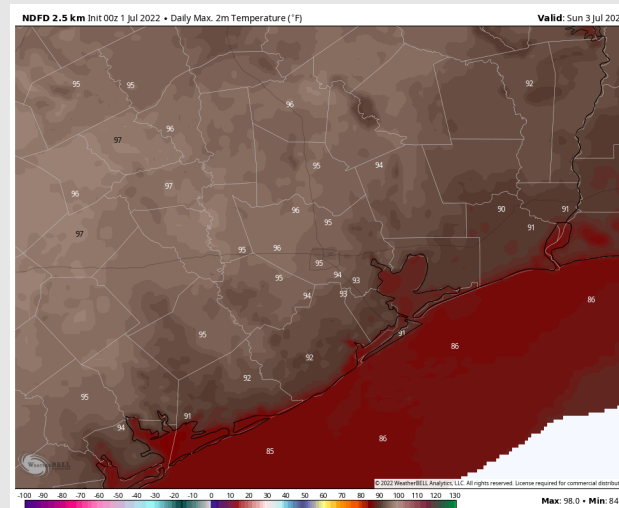
Temps: Highs reach the upper 80s F and lower 90s F for most stations.

Visibility: Not anticipating any fog concerns at this time.

Precip Forecast: 4 AM CT

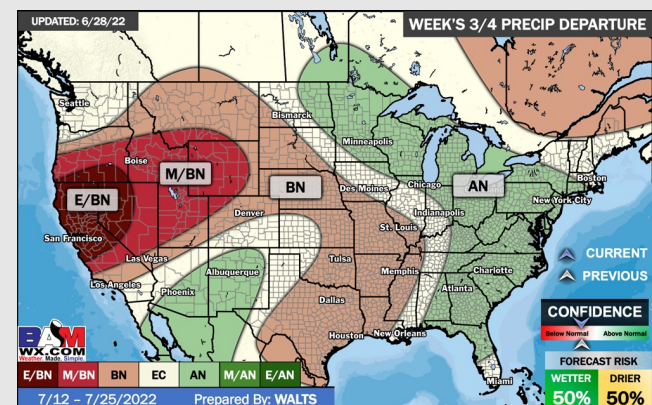
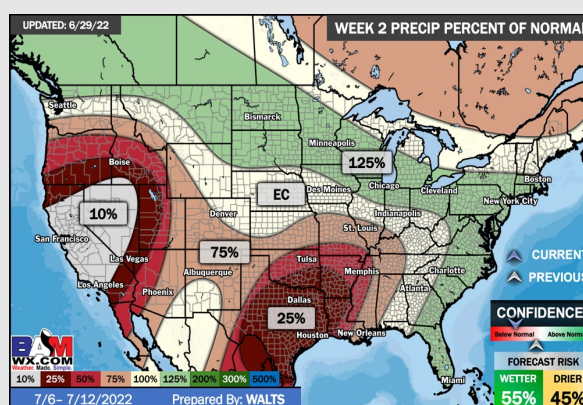
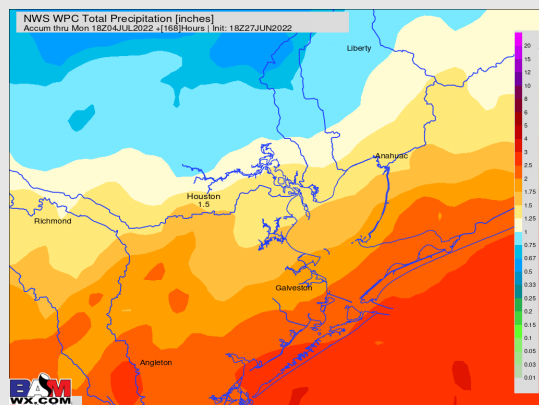
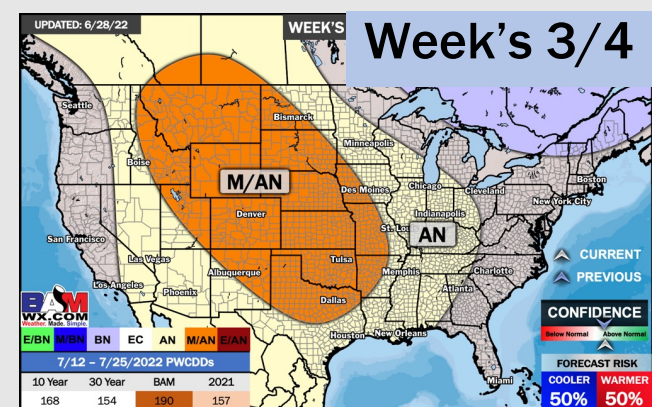
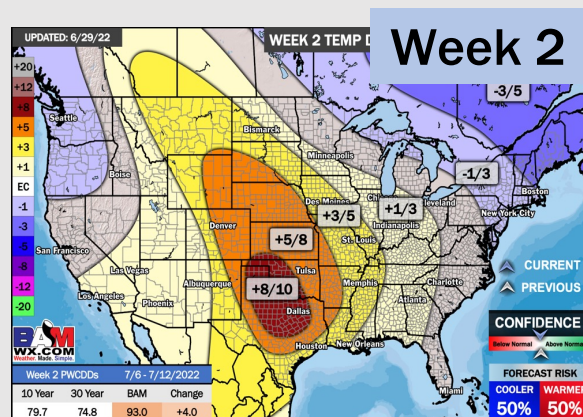
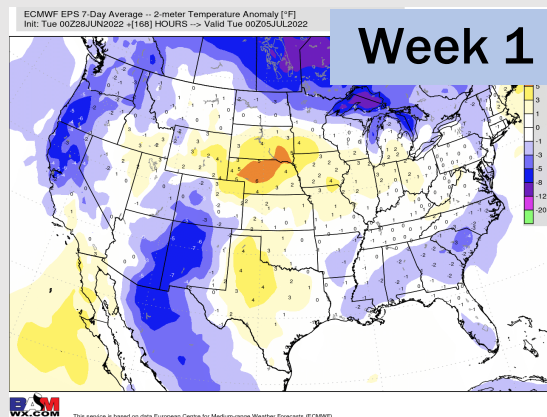


Wind Gusts
5 PM CT



High Temps
Sun

Houston Pilots: 7/1/22



- Multiple shots of precipitation will be possible this week with a much more active pattern vs the last few weeks. This will also help keep temperatures much closer to normal.
- Week 2 likely features above normal risks for temperatures and below normal precipitation risks.
- The weeks 3/4 timeframe into July looks to feature above normal temperatures and below normal risks for precip.