

Houston Pilots Forecast Package

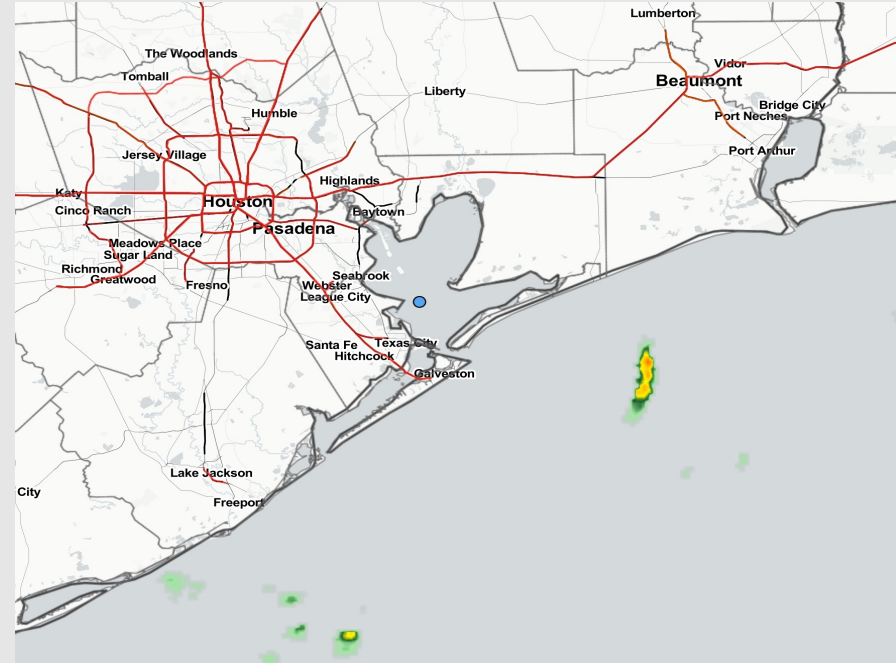


Updated: 4:30 AM CT
Saturday, July 30, 2022

Forecaster: Kirk Hinz

Weather Headlines

- A few minor chances for precipitation the next few days (theme stays isolated / hit and miss) – nothing significant in terms of high precip chances with more dry time than not.
- Flow will stay predominately out of the S/SSE over the next few days.
- Not favoring any tropical threats the next 7 days.
- Above average temperatures look to continue into August.

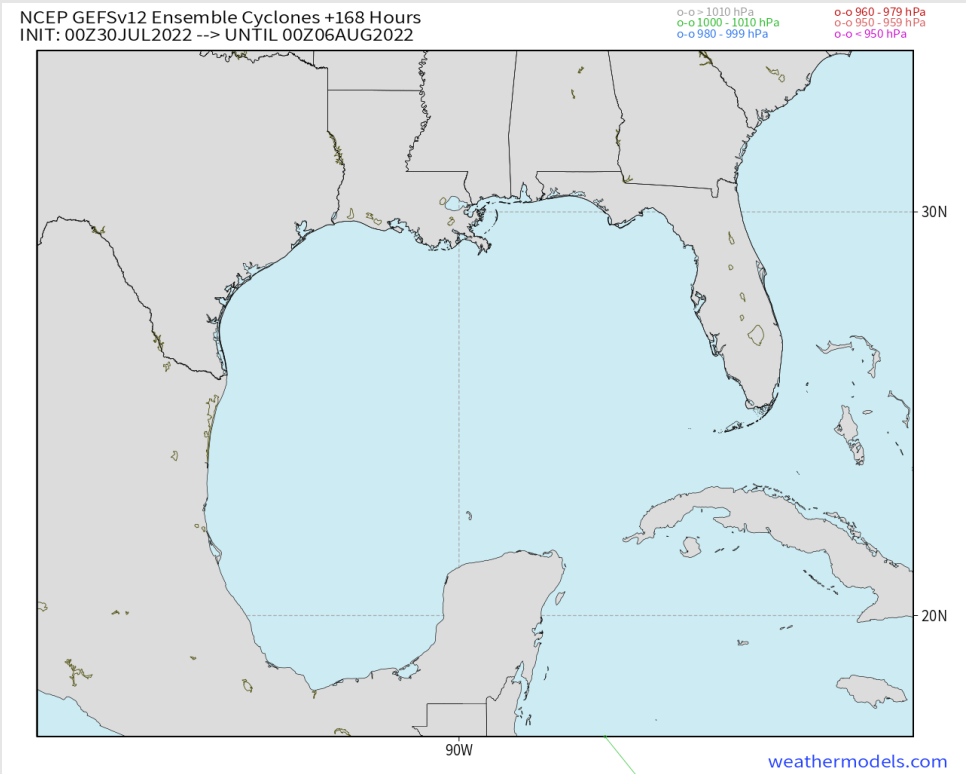


Radar/ NWS Alerts: 4:30 AM CT



As always, please do not hesitate to reach out to us with any forecast questions via the chat option on the Weather Porthole or our on-call number, **(317)-560-8122** press 1 for forecast questions.

Various model tracks next 7 days



Not favoring any tropical threats the next 7 days.

Confidence

Above Normal Below Normal

Houston Pilots: Sat. 7/30/2022

Forecast Discussion

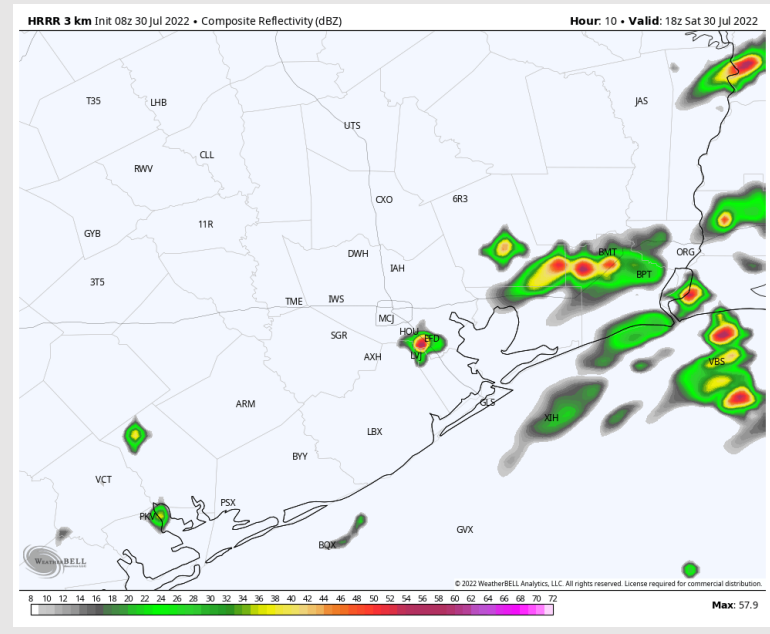
Precip: Isolated chances (~10/20%) for hit and miss showers/thunderstorms will be possible starting ~6AM this morning out through 12PM, with chances increasing to 30/40% from 12 - 6PM later this afternoon (best threat likely just east of the Stations). Moderate to at times heavy downpours and a couple lightning strikes cannot be ruled out under the strongest cells. Favoring drier conditions into the overnight.

Wind: Sustained winds out of the S/SSE 10-15 MPH until 9AM, with winds north of Morgan's Point 3-8 MPH. Winds then calm to 5-10 MPH and veering from the SE midday. Sustained winds then pick back up to 10-15 MPH after 2PM and remain into the overnight. Gusts of 20 MPH possible under stronger cells today.

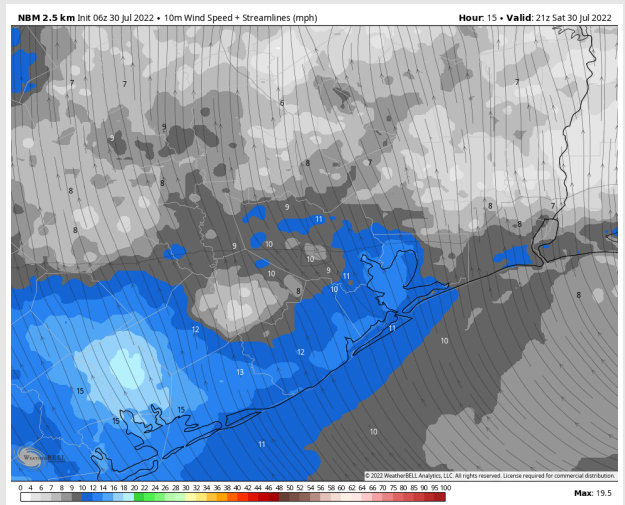
Temps: Highs today in the upper 80s F near the boarding station and mid 90s F for all other stations.

Visibility: Not anticipating any fog concerns at this time.

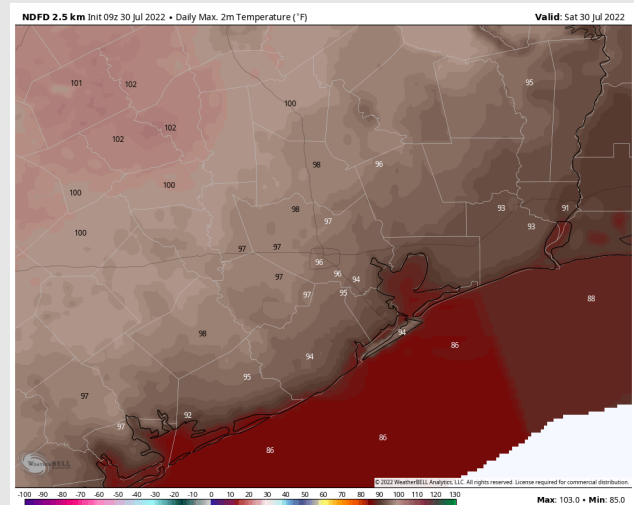
Precip Forecast: 1 PM CT



Wind Speed 4 PM CT



High Temps Today



Wind Speed
4 PM CT

High Temps
Today

Houston Pilots: Sun. 7/31/2022



Forecast Discussion

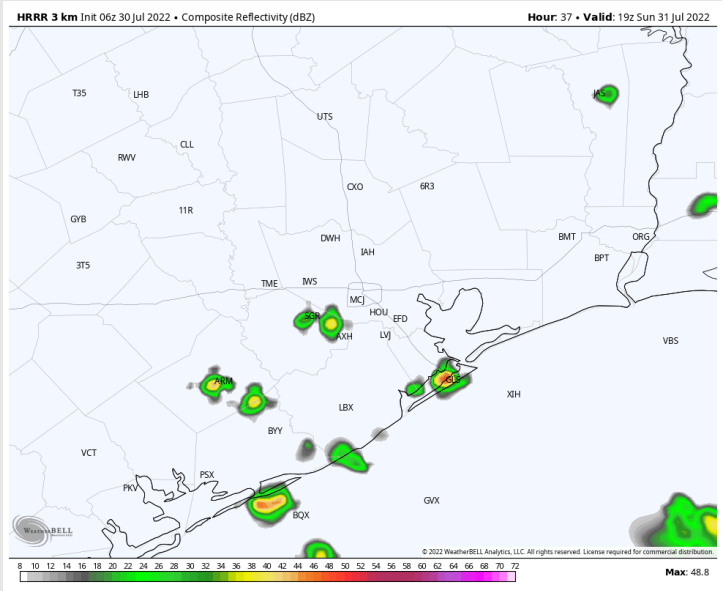
Precip: A 20% chance for an isolated shower Sunday between 6AM-12PM. Storm chances increase to 30/40% from 12- 6PM with better chances further into the Gulf. A few isolated lightning strikes and locally heavy downpours are possible under the strongest cells.

Wind: Sustained winds Sunday out of the SE 8-13 MPH in the early AM with winds north of Morgan’s Point a bit calmer. Winds slowly increase up to 13-18 MPH after 12/1PM into the evening/overnight hours (gusts up to 20 MPH at times will be possible).

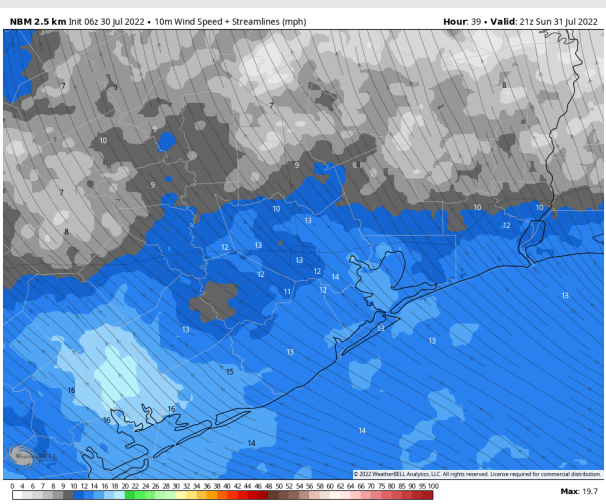
Temps: High temps in the mid 80s F near the boarding station and in the mid 90s F for most stations.

Visibility: Not anticipating fog concerns at this time.

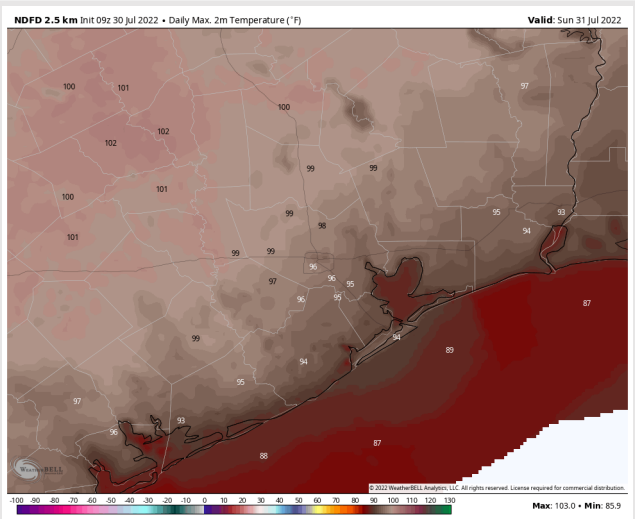
Precip Forecast: 2 PM CT



Wind Speed
4 PM CT



High Temps
Sunday



Houston Pilots: Mon. 8/1/2022



Forecast Discussion

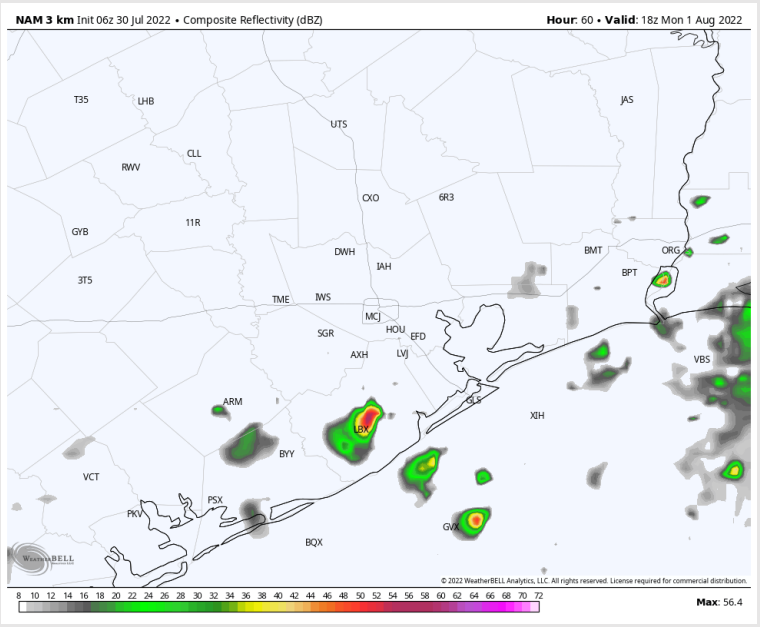
Precip: Expecting a similar threat of precipitation here on Monday as today and Sunday (6AM - 12PM 20% chance of a shower / 12 - 6 PM 30-40% better chance of a shower/thunderstorm). Decreasing rain evening/overnight.

Wind: Sustained winds look to be 10-15 MPH out of the SE throughout the AM with winds north of Morgan's Point a bit calmer at 3-8 MPH. After 12/1 PM, sustained winds veer from the SSE 13-18 MPH with occasional 20 MPH gusts.

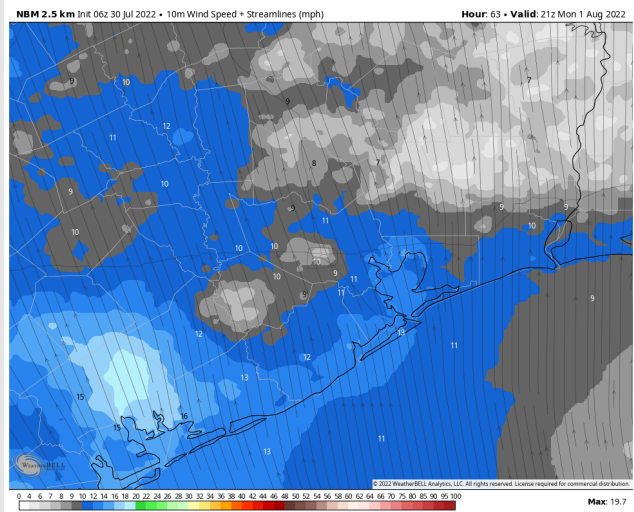
Temps: High temps Monday in the lower 90s F with temps near boarding station closer to upper 80s F.

Visibility: Not anticipating fog concerns at this time.

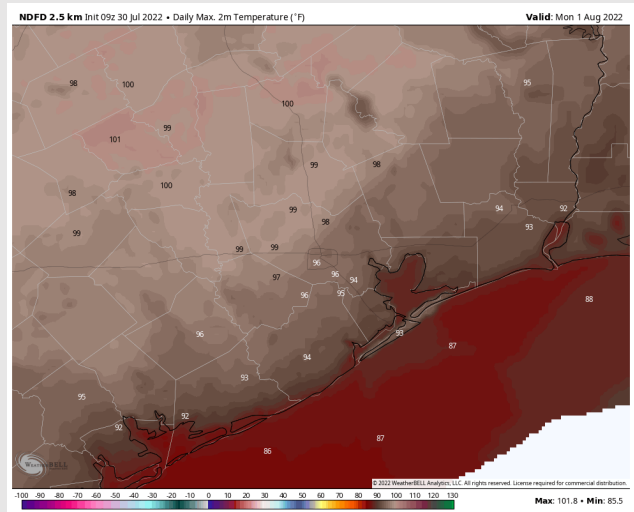
Precip Forecast: 1 PM CT



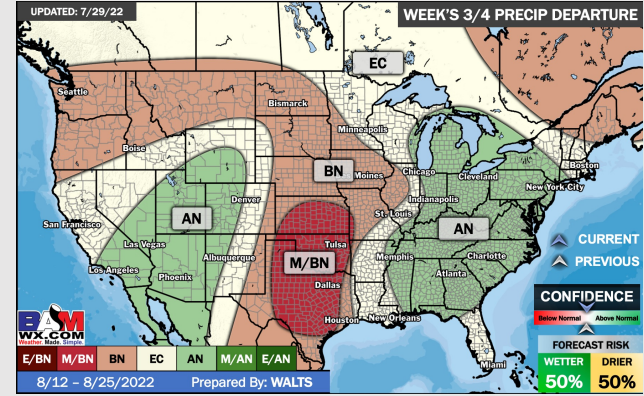
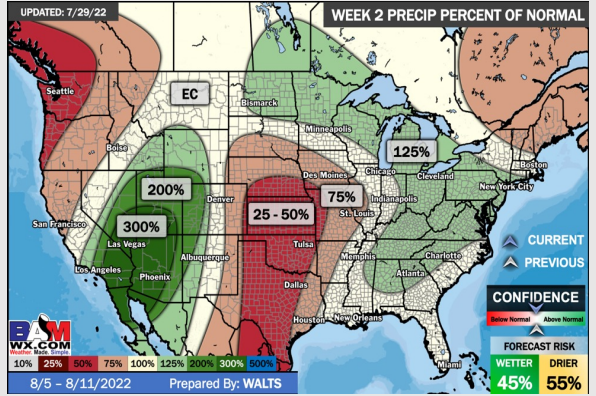
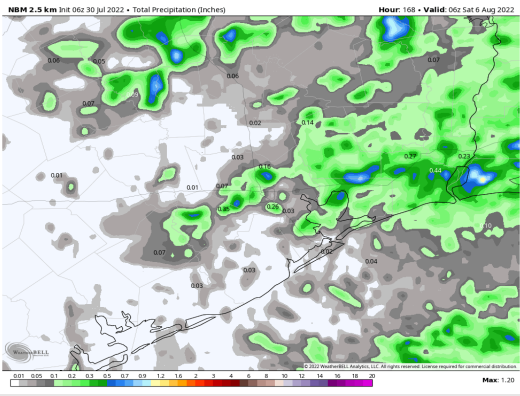
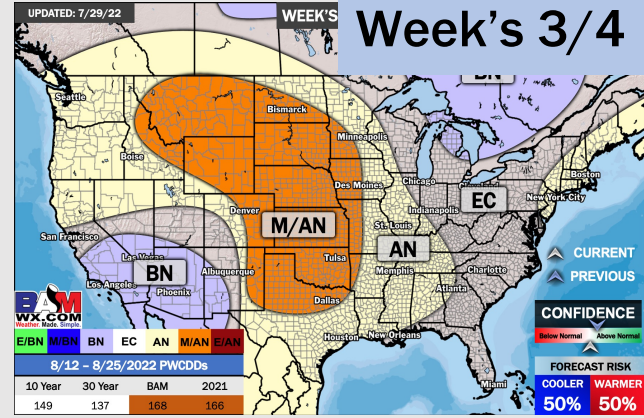
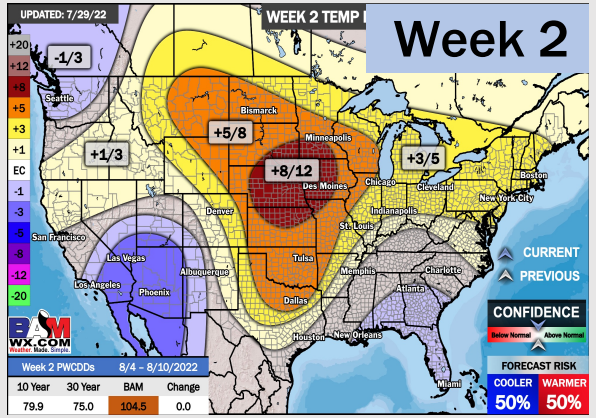
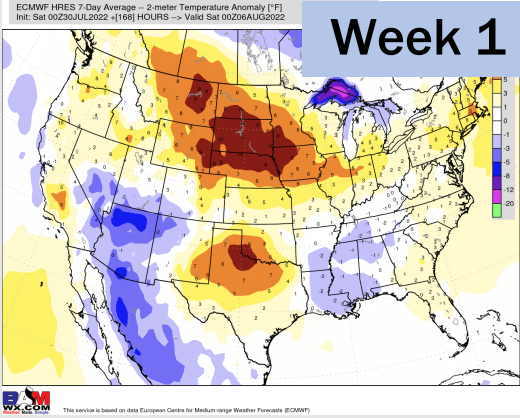
Wind Speed
4 PM CT



High Temps
Monday



Houston Pilots: 7/30/22



- Another week with above normal temperatures. Daily, scattered chances for precipitation will be possible over the next few days, but not widespread heavy threats at this time.
- Week 2 likely features normal risks for temperatures and below normal precipitation risks.
- The weeks 3/4 timeframe into the first couple weeks of August looks to feature above normal temperatures and below normal risks for precip.