

Houston Pilots Forecast Package

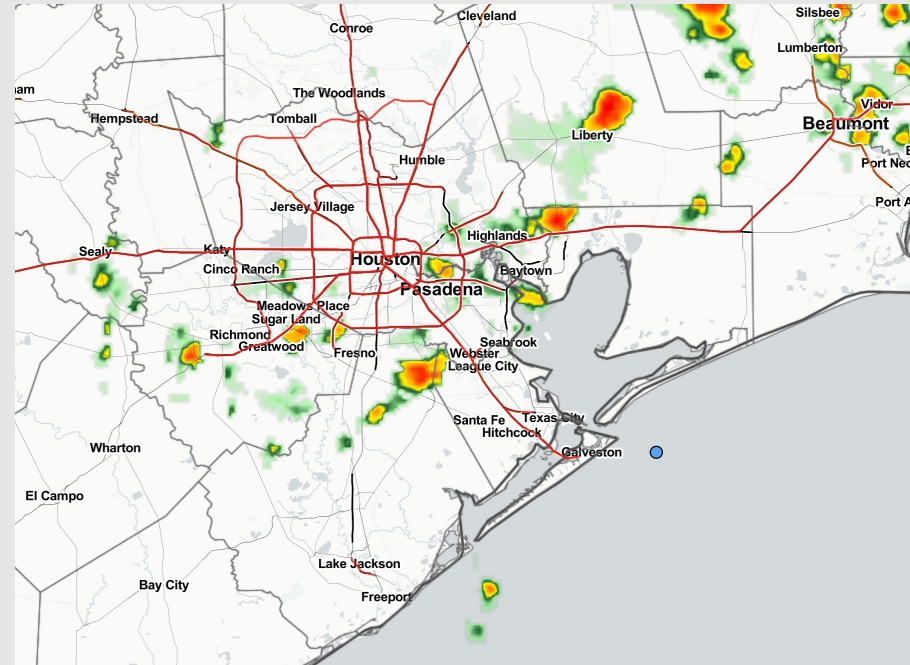
Houston Pilots

Updated: 2:00 PM CT
Friday, July 29, 2022

Forecaster: Alyssa McClung

Weather Headlines

- A few minor chances for precipitation the next few days (theme stays isolated / hit and miss) – nothing significant in terms of high precip chances with more dry time than not.
- Flow will stay predominately out of the S/SSE over the next few days.
- Not favoring any tropical threats the next 7 days.
- Above average temperatures look to continue into August.

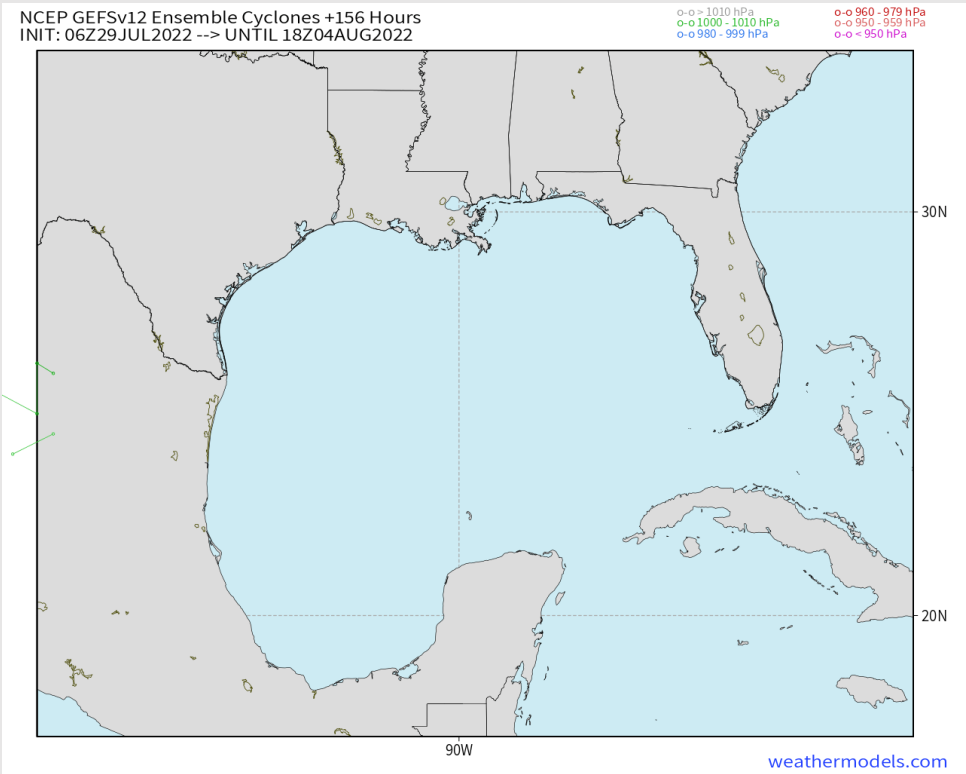


Radar/ NWS Alerts: 2:00 PM CT



As always, please do not hesitate to reach out to us with any forecast questions via the chat option on the Weather Porthole or our on-call number, **(317)-560-8122** press 1 for forecast questions.

Various model tracks next 7 days



Not favoring any tropical threats the next 7 days.

Confidence



Above Normal Below Normal

Houston Pilots Wind Report



Time	07-29-2022 Fri 1pm	07-29-2022 Fri 2pm	07-29-2022 Fri 3pm	07-29-2022 Fri 4pm	07-29-2022 Fri 5pm	07-29-2022 Fri 6pm	07-29-2022 Fri 7pm	07-29-2022 Fri 8pm	07-29-2022 Fri 9pm	07-29-2022 Fri 10pm	07-29-2022 Fri 11pm	07-30-2022 Sat 12am	07-30-2022 Sat 1am	07-30-2022 Sat 2am	07-30-2022 Sat 3am	07-30-2022 Sat 4am	07-30-2022 Sat 5am	07-30-2022 Sat 6am	07-30-2022 Sat 7am	07-30-2022 Sat 8am	07-30-2022 Sat 9am	07-30-2022 Sat 10am	07-30-2022 Sat 11am	07-30-2022 Sat 12pm	07-30-2022 Sat 1pm	07-30-2022 Sat 2pm	07-30-2022 Sat 3pm	07-30-2022 Sat 4pm	07-30-2022 Sat 5pm	07-30-2022 Sat 6pm	07-30-2022 Sat 7pm	07-30-2022 Sat 8pm	07-30-2022 Sat 9pm	07-30-2022 Sat 10pm	07-30-2022 Sat 11pm	07-31-2022 Sun 12am		
Houston Pilots N - 610 Bridge	WS: 8 G:12 SSE	WS: 21 G:31 SSW	WS: 6 G:12 SE	WS: 3 G:8 WSW	WS: 3 G:10 SW	WS: 7 G:13 SSE	WS: 4 G:14 S	WS: 4 G:16 S	WS: 5 G:15 SSE	WS: 5 G:13 SSE	WS: 5 G:13 S	WS: 3 G:11 S	WS: 1 G:7 SSE	WS: 1 G:7 SSW	WS: 2 G:9 S	WS: 2 G:4 S	WS: 1 G:4 S	WS: 1 G:3 S	WS: 1 G:3 SSW	WS: 1 G:3 SSW	WS: 2 G:5 SSW	WS: 6 G:8 SSW	WS: 6 G:9 SSW	WS: 5 G:9 SSW	WS: 5 G:10 SSE	WS: 7 G:13 S	WS: 8 G:14 SE	WS: 9 G:13 SSE	WS: 10 G:15 SSE	WS: 10 G:16 SSE	WS: 10 G:15 SSE	WS: 9 G:16 SSE	WS: 8 G:14 SSE	WS: 7 G:13 SSE	WS: 6 G:11 S	WS: 5 G:10 S		
Houston Pilots M - Kinder 1	WS: 10 G:15 SE	WS: 23 G:37 WSW	WS: 9 G:15 SE	WS: 3 G:9 SW	WS: 4 G:11 SSW	WS: 7 G:12 SSE	WS: 5 G:15 SSE	WS: 5 G:15 SSE	WS: 4 G:13 SSE	WS: 5 G:13 S	WS: 3 G:11 S	WS: 2 G:8 SSE	WS: 2 G:7 S	WS: 2 G:9 S	WS: 2 G:4 S	WS: 1 G:3 S	WS: 1 G:3 SSW	WS: 1 G:3 SSW	WS: 1 G:3 SSW	WS: 2 G:6 SSW	WS: 6 G:8 SSW	WS: 6 G:9 SSW	WS: 6 G:9 SSW	WS: 5 G:9 SSE	WS: 6 G:10 SSE	WS: 8 G:13 S	WS: 8 G:14 SSE	WS: 10 G:15 SSE	WS: 10 G:15 SSE	WS: 10 G:15 SSE	WS: 9 G:15 SSE	WS: 8 G:14 SSE	WS: 7 G:13 SSE	WS: 6 G:11 S	WS: 5 G:10 S			
Houston Pilots L - Greens Bayou	WS: 14 G:20 E	WS: 21 G:36 WSW	WS: 13 G:21 S	WS: 6 G:11 S	WS: 7 G:12 SE	WS: 7 G:13 SSE	WS: 6 G:17 SSE	WS: 5 G:15 SSE	WS: 5 G:13 SSE	WS: 4 G:13 S	WS: 3 G:11 S	WS: 2 G:8 SSE	WS: 2 G:8 SSE	WS: 3 G:9 SSW	WS: 2 G:4 S	WS: 1 G:3 S	WS: 1 G:3 SSW	WS: 1 G:3 SSW	WS: 2 G:6 SSW	WS: 2 G:6 SSW	WS: 6 G:8 SSW	WS: 6 G:9 SSW	WS: 6 G:9 SSW	WS: 6 G:9 S	WS: 6 G:10 SSE	WS: 8 G:12 S	WS: 8 G:13 SSE	WS: 10 G:14 SSE	WS: 10 G:15 SSE	WS: 10 G:15 SSE	WS: 9 G:15 SSE	WS: 8 G:14 SSE	WS: 7 G:12 SSE	WS: 6 G:11 S	WS: 5 G:9 S			
Houston Pilots K - Shell Crude	WS: 13 G:20 E	WS: 17 G:32 W	WS: 15 G:23 S	WS: 5 G:11 SSE	WS: 6 G:12 SSE	WS: 8 G:14 SE	WS: 8 G:18 SSE	WS: 6 G:19 SSE	WS: 5 G:16 SSE	WS: 4 G:14 SSE	WS: 4 G:14 S	WS: 3 G:12 S	WS: 2 G:10 SSE	WS: 2 G:10 SSW	WS: 3 G:10 SSW	WS: 2 G:5 S	WS: 1 G:4 SSW	WS: 1 G:3 SSW	WS: 1 G:3 SSW	WS: 3 G:6 SSW	WS: 6 G:8 SSW	WS: 6 G:9 SSW	WS: 6 G:9 SSW	WS: 6 G:9 S	WS: 7 G:10 SSE	WS: 9 G:13 S	WS: 9 G:13 SSE	WS: 10 G:14 SSE	WS: 11 G:15 SSE	WS: 11 G:15 SSE	WS: 11 G:15 SSE	WS: 9 G:15 SSE	WS: 8 G:14 SSE	WS: 7 G:12 SSE	WS: 6 G:11 S	WS: 5 G:10 S		
Houston Pilots J - Lynchburg Ferries	WS: 12 G:17 E	WS: 8 G:17 WSW	WS: 16 G:27 SSW	WS: 5 G:10 SE	WS: 7 G:13 SE	WS: 9 G:16 SE	WS: 9 G:19 SSE	WS: 7 G:20 SSE	WS: 6 G:18 SSE	WS: 4 G:15 SSE	WS: 5 G:15 S	WS: 4 G:13 S	WS: 3 G:12 S	WS: 3 G:12 SSW	WS: 3 G:11 SSW	WS: 3 G:5 SSW	WS: 2 G:4 SSW	WS: 2 G:3 SSW	WS: 2 G:3 SSW	WS: 3 G:6 SSW	WS: 6 G:8 SSW	WS: 6 G:9 SSW	WS: 6 G:9 SSW	WS: 7 G:9 SSE	WS: 7 G:10 SSE	WS: 9 G:12 SSE	WS: 10 G:14 SSE	WS: 11 G:15 SSE	WS: 12 G:16 SSE	WS: 12 G:16 SSE	WS: 11 G:15 SSE	WS: 10 G:14 SSE	WS: 9 G:13 S	WS: 8 G:12 S	WS: 7 G:11 S	WS: 6 G:10 S		
Houston Pilots I - Exxon 3	WS: 11 G:15 SSW	WS: 4 G:10 W	WS: 17 G:28 SW	WS: 5 G:9 ESE	WS: 7 G:13 SSE	WS: 10 G:17 SSE	WS: 8 G:19 S	WS: 7 G:19 S	WS: 6 G:19 S	WS: 6 G:17 S	WS: 5 G:15 S	WS: 4 G:15 S	WS: 4 G:14 SSW	WS: 4 G:13 SSW	WS: 4 G:7 SSW	WS: 3 G:6 SSW	WS: 3 G:5 SSW	WS: 3 G:5 SSW	WS: 4 G:7 SSW	WS: 6 G:9 SSW	WS: 6 G:9 SSW	WS: 7 G:9 SSW	WS: 7 G:9 S	WS: 7 G:11 SSE	WS: 9 G:13 SSE	WS: 11 G:15 S	WS: 12 G:16 SSE	WS: 12 G:16 SSE	WS: 12 G:16 SSE	WS: 12 G:16 SSE	WS: 12 G:16 S	WS: 10 G:14 S	WS: 9 G:13 S	WS: 8 G:12 S	WS: 7 G:12 S	WS: 7 G:12 S		
Houston Pilots H - Morgans Point	WS: 7 G:13 SW	WS: 6 G:10 W	WS: 18 G:27 WSW	WS: 4 G:8 ESE	WS: 9 G:14 SSE	WS: 13 G:18 SSE	WS: 13 G:19 SSE	WS: 12 G:19 S	WS: 10 G:18 S	WS: 9 G:17 S	WS: 10 G:18 S	WS: 8 G:17 S	WS: 8 G:16 S	WS: 7 G:14 SSW	WS: 7 G:14 SSW	WS: 5 G:10 SSW	WS: 5 G:9 SSW	WS: 4 G:8 SSW	WS: 4 G:8 SSW	WS: 5 G:8 SSW	WS: 6 G:9 SSW	WS: 7 G:10 SSW	WS: 7 G:10 S	WS: 7 G:10 S	WS: 8 G:10 S	WS: 9 G:12 SSE	WS: 11 G:13 SSE	WS: 12 G:15 S	WS: 12 G:15 SSE	WS: 12 G:16 SSE	WS: 12 G:16 SSE	WS: 12 G:16 S	WS: 11 G:15 SSE	WS: 10 G:14 S	WS: 9 G:13 S	WS: 9 G:14 S	WS: 8 G:14 S	WS: 8 G:14 S
Houston Pilots G - 75/76	WS: 5 G:14 S	WS: 9 G:13 S	WS: 17 G:21 W	WS: 4 G:9 ENE	WS: 9 G:14 SSE	WS: 16 G:20 S	WS: 16 G:20 S	WS: 14 G:18 S	WS: 13 G:18 S	WS: 15 G:19 S	WS: 15 G:17 S	WS: 12 G:16 S	WS: 11 G:15 S	WS: 10 G:15 SSW	WS: 10 G:12 SSW	WS: 8 G:12 SSW	WS: 7 G:12 SSW	WS: 7 G:11 SSW	WS: 6 G:10 SSW	WS: 6 G:10 SSW	WS: 6 G:10 SSW	WS: 7 G:10 SSW	WS: 8 G:10 SSW	WS: 8 G:10 S	WS: 9 G:12 SSE	WS: 10 G:13 SSE	WS: 12 G:15 SSE	WS: 12 G:15 SSE	WS: 12 G:16 SSE	WS: 12 G:16 SSE	WS: 12 G:16 S	WS: 12 G:16 S	WS: 11 G:15 S	WS: 11 G:15 S	WS: 11 G:16 S	WS: 11 G:16 S	WS: 11 G:16 S	
Houston Pilots F - 63/64	WS: 9 G:15 S	WS: 13 G:16 SSE	WS: 15 G:16 WNW	WS: 4 G:10 ESE	WS: 9 G:13 SSE	WS: 17 G:20 S	WS: 17 G:19 S	WS: 15 G:18 S	WS: 15 G:18 S	WS: 15 G:18 S	WS: 15 G:17 S	WS: 13 G:17 S	WS: 12 G:15 S	WS: 12 G:15 S	WS: 11 G:15 SSW	WS: 11 G:13 SSW	WS: 8 G:12 SSW	WS: 8 G:12 SSW	WS: 7 G:11 SSW	WS: 7 G:11 SSW	WS: 7 G:11 SSW	WS: 7 G:11 SSW	WS: 8 G:11 SSW	WS: 8 G:11 SSW	WS: 8 G:11 SSE	WS: 9 G:12 SSE	WS: 11 G:14 SSE	WS: 12 G:15 SSE	WS: 12 G:16 SSE	WS: 13 G:16 SSE	WS: 13 G:16 S	WS: 12 G:16 S	WS: 12 G:16 S	WS: 12 G:16 S	WS: 12 G:16 S	WS: 12 G:16 S	WS: 12 G:16 S	
Houston Pilots E - 51/52	WS: 14 G:16 S	WS: 18 G:19 S	WS: 12 G:13 WNW	WS: 5 G:11 E	WS: 9 G:12 SE	WS: 16 G:17 SSE	WS: 18 G:20 S	WS: 17 G:19 S	WS: 15 G:18 S	WS: 15 G:17 S	WS: 14 G:17 S	WS: 14 G:17 S	WS: 13 G:15 S	WS: 13 G:16 S	WS: 12 G:15 S	WS: 9 G:13 S	WS: 9 G:13 SSW	WS: 8 G:12 SSW	WS: 8 G:12 SSW	WS: 8 G:11 SSW	WS: 8 G:11 SSW	WS: 8 G:11 SSW	WS: 8 G:11 SSW	WS: 8 G:11 SSE	WS: 9 G:12 SSE	WS: 10 G:13 SSE	WS: 11 G:14 SSE	WS: 12 G:15 SSE	WS: 12 G:15 SSE	WS: 12 G:16 SSE	WS: 12 G:16 S	WS: 12 G:16 S	WS: 12 G:16 S	WS: 12 G:16 S	WS: 12 G:16 S	WS: 12 G:16 S	WS: 12 G:16 S	
Houston Pilots D - 37/38	WS: 16 G:17 S	WS: 18 G:19 S	WS: 10 G:12 SW	WS: 7 G:11 ESE	WS: 11 G:13 S	WS: 17 G:18 S	WS: 17 G:18 S	WS: 15 G:17 S	WS: 14 G:17 S	WS: 14 G:16 S	WS: 14 G:17 S	WS: 13 G:15 S	WS: 13 G:16 S	WS: 13 G:16 S	WS: 13 G:15 S	WS: 10 G:14 S	WS: 10 G:13 S	WS: 9 G:12 SSW	WS: 8 G:12 SSW	WS: 8 G:12 SSW	WS: 9 G:12 SSW	WS: 9 G:12 SSW	WS: 8 G:11 SSW	WS: 8 G:11 SSW	WS: 8 G:11 SSE	WS: 9 G:12 SSE	WS: 11 G:13 SSE	WS: 12 G:14 SSE	WS: 12 G:14 SSE	WS: 12 G:15 SSE	WS: 12 G:15 SSE	WS: 12 G:16 SSE	WS: 12 G:16 S	WS: 12 G:16 S	WS: 12 G:16 S	WS: 12 G:16 S	WS: 12 G:16 S	
Houston Pilots C - 25/26	WS: 16 G:18 S	WS: 16 G:18 S	WS: 11 G:12 SSE	WS: 10 G:11 SSE	WS: 12 G:13 S	WS: 14 G:15 S	WS: 16 G:19 S	WS: 16 G:17 S	WS: 15 G:16 S	WS: 12 G:16 S	WS: 12 G:16 S	WS: 11 G:15 S	WS: 11 G:15 S	WS: 12 G:15 S	WS: 12 G:15 S	WS: 10 G:14 S	WS: 10 G:13 S	WS: 9 G:12 SSW	WS: 8 G:12 SSW	WS: 9 G:12 SSW	WS: 9 G:12 SSW	WS: 9 G:12 SSW	WS: 8 G:11 SSW	WS: 8 G:11 SSW	WS: 8 G:11 SSE	WS: 9 G:12 SSE	WS: 10 G:13 SSE	WS: 11 G:14 SSE	WS: 11 G:14 SSE	WS: 11 G:15 SSE	WS: 11 G:15 SSE	WS: 11 G:16 SSE	WS: 11 G:16 S	WS: 11 G:16 S	WS: 11 G:16 S	WS: 11 G:16 S	WS: 11 G:16 S	
Houston Pilots B - 11/12	WS: 16 G:18 S	WS: 15 G:17 S	WS: 12 G:13 SSW	WS: 11 G:12 S	WS: 12 G:13 S	WS: 13 G:15 S	WS: 13 G:15 S	WS: 15 G:18 S	WS: 13 G:17 S	WS: 13 G:16 S	WS: 12 G:16 S	WS: 13 G:16 S	WS: 12 G:15 S	WS: 11 G:15 S	WS: 12 G:16 S	WS: 10 G:14 S	WS: 10 G:13 S	WS: 9 G:12 SSW	WS: 9 G:12 SSW	WS: 9 G:12 SSW	WS: 9 G:12 SSW	WS: 9 G:12 SSW	WS: 8 G:11 SSW	WS: 8 G:11 SSW	WS: 8 G:11 SSE	WS: 9 G:12 SSE	WS: 10 G:13 SSE	WS: 10 G:13 SSE	WS: 11 G:14 SSE	WS: 11 G:14 SSE	WS: 11 G:15 SSE	WS: 11 G:15 SSE	WS: 11 G:16 SSE	WS: 11 G:16 S	WS: 11 G:16 S	WS: 11 G:16 S	WS: 11 G:16 S	
Houston Pilots A - 1 & 2 Bravo	WS: 16 G:17 SSW	WS: 16 G:15 S	WS: 13 G:14 SSW	WS: 11 G:12 S	WS: 12 G:13 S	WS: 14 G:15 S	WS: 15 G:16 S	WS: 15 G:16 S	WS: 15 G:16 S	WS: 15 G:16 S	WS: 15 G:16 S	WS: 14 G:15 S	WS: 14 G:15 S	WS: 14 G:16 S	WS: 14 G:15 S	WS: 12 G:14 S	WS: 11 G:14 S	WS: 10 G:13 SSW	WS: 10 G:13 SSW	WS: 9 G:12 SSW	WS: 9 G:12 SSW	WS: 9 G:12 SSW	WS: 8 G:11 SSW	WS: 8 G:11 SSW	WS: 8 G:11 SSE	WS: 9 G:12 SSE	WS: 10 G:13 SSE	WS: 10 G:13 SSE	WS: 11 G:14 SSE	WS: 11 G:14 SSE	WS: 11 G:15 SSE	WS: 11 G:15 SSE	WS: 11 G:16 SSE	WS: 11 G:16 S	WS: 11 G:16 S	WS: 11 G:16 S	WS: 11 G:16 S	

See slides below for official thoughts on winds.

Houston Pilots: Fri. 7/29/2022



Forecast Discussion

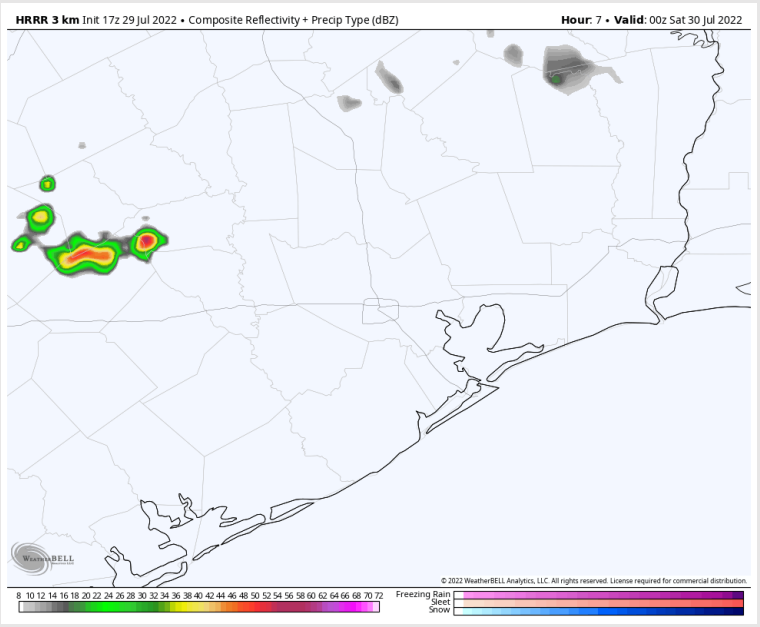
Precip: Expecting chances for showers/ thunderstorms to continue 40-50% until 6PM. Moderate to heavy downpours and few lightning strikes possible under the strongest cells. After 6PM, expecting mostly dry conditions for the rest of the evening and overnight.

Wind: Sustained winds at 8-13 MPH out of the S/SSE for most of the PM. Expecting winds briefly pick up to 10-15 MPH around 5PM, before calming back to 8-13 MPH around 9PM and continuing into the night. Winds north of Morgan's Point slightly calmer at 3-8 MPH. Gust up to 30MPH possible under stronger storm cells.

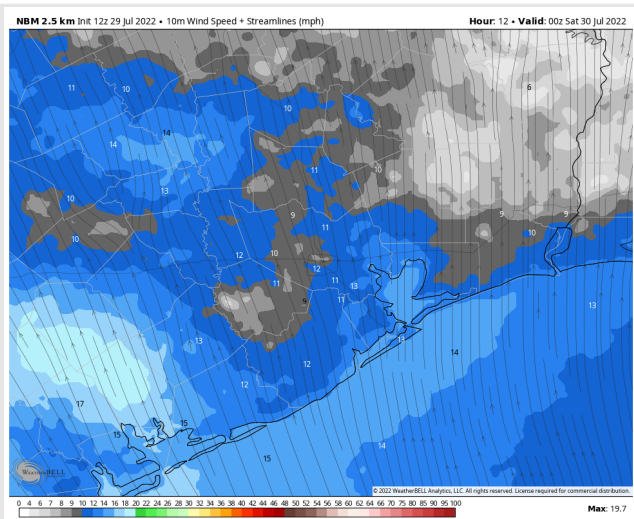
Temps: Low temps Saturday morning look to be in the upper 70s F with the boarding station being in the mid 80s F.

Visibility: Not anticipating any fog concerns at this time.

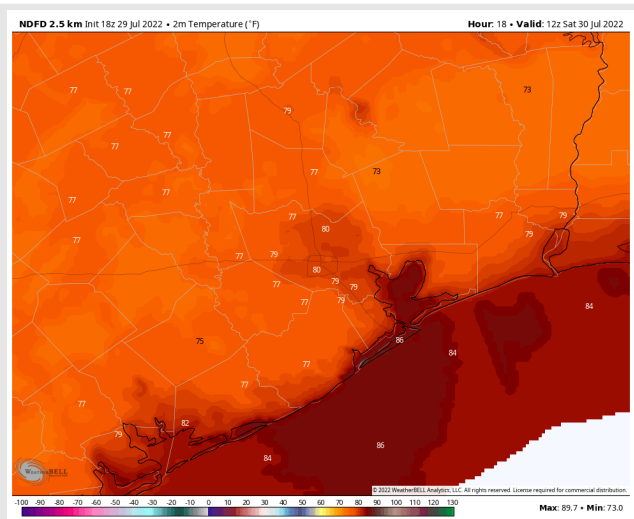
Precip Forecast: 7 PM CT



Wind Speed
7 PM CT



Low Temps
Sat AM



Houston Pilots: Sat. 7/30/2022

Forecast Discussion

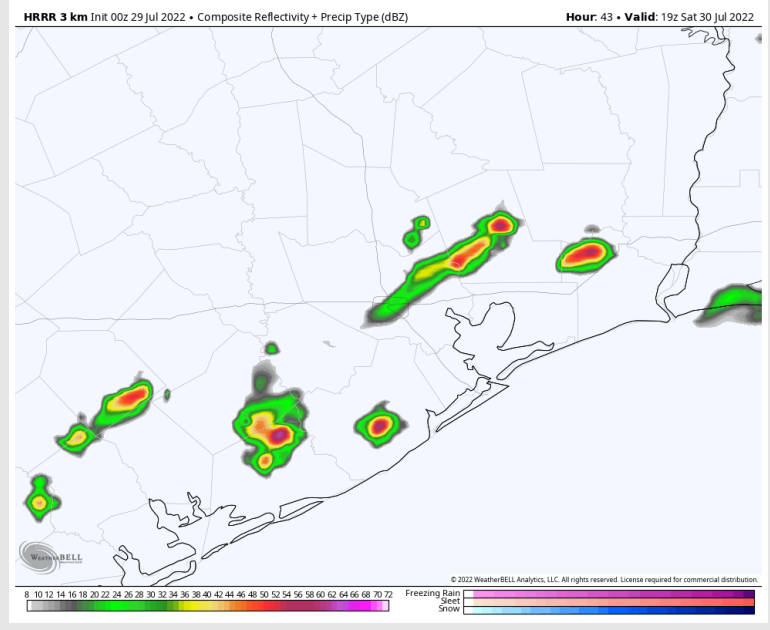
Precip: Isolated chances (~30%) for hit and miss showers/thunderstorms will be possible starting ~9AM out through 4PM before chances wind down to 10%. Moderate to at times heavy downpours and a couple lightning strikes cannot be ruled out under the strongest cells. Favoring drier conditions into the overnight.

Wind: Winds out of the south 10-15 MPH in the AM, then calming to 5-10 MPH and veering from the SE midday. Winds north of Morgan's Point staying a bit calmer around 3-8 MPH. Sustained winds then pick back up in the early PM to 8-13 MPH and will continue into the rest of the night.

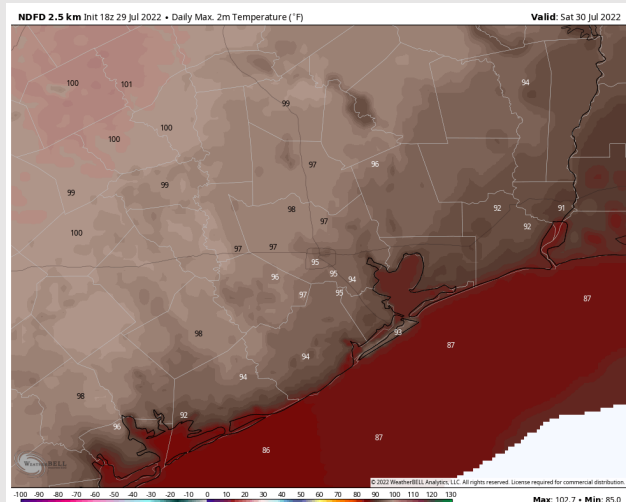
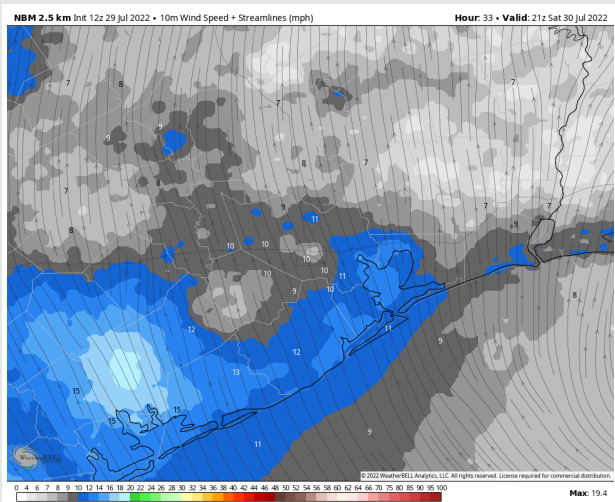
Temps: Highs Saturday read the upper 80s F near the boarding station and mid 90s F for all other stations.

Visibility: Not anticipating any fog concerns at this time.

Precip Forecast: 2 PM CT



Wind Speed
4 PM CT



High Temps
Saturday

Houston Pilots: Sun. 7/31/2022



Forecast Discussion

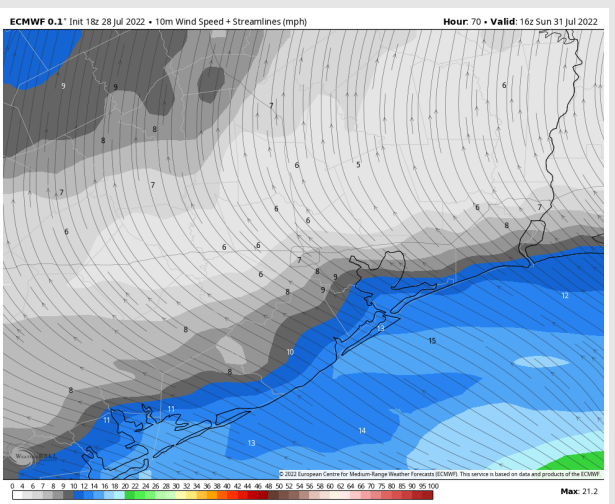
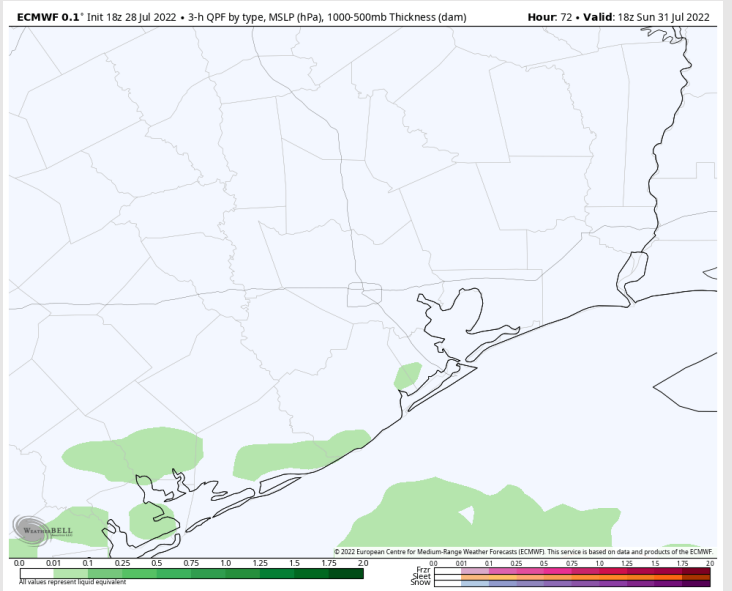
Precip: An isolated shower is possible Sunday in the early PM with better chances further into the Gulf. Overall favoring dry conditions for most of the day.

Wind: Sustained winds Sunday out of the SE 10-15 MPH in the early AM with winds north of Morgan's Point a bit calmer. Winds slowly decrease midday to 8-13 MPH sustained before increasing up to 13-18 MPH in the PM.

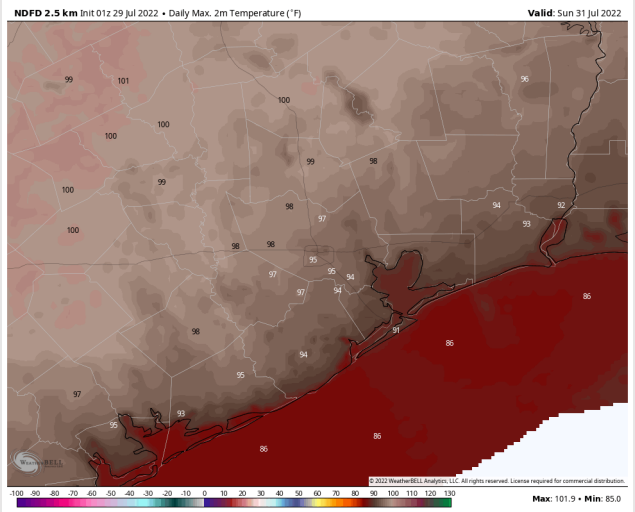
Temps: High temps in the mid 80s F near the boarding station and in the mid 90s F for most stations.

Visibility: Not anticipating fog concerns at this time.

Precip Forecast: 1 PM CT

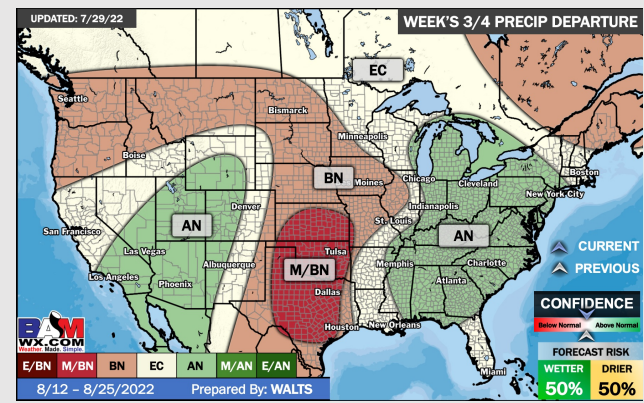
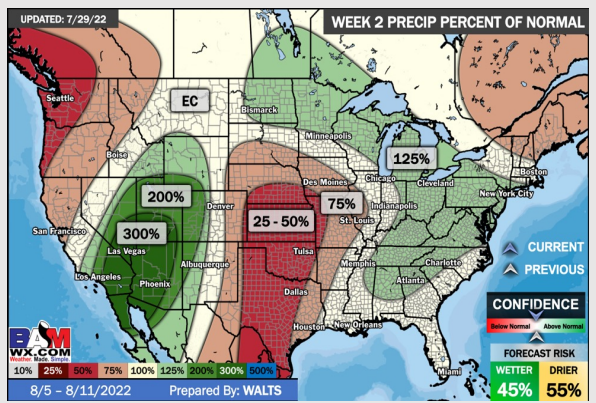
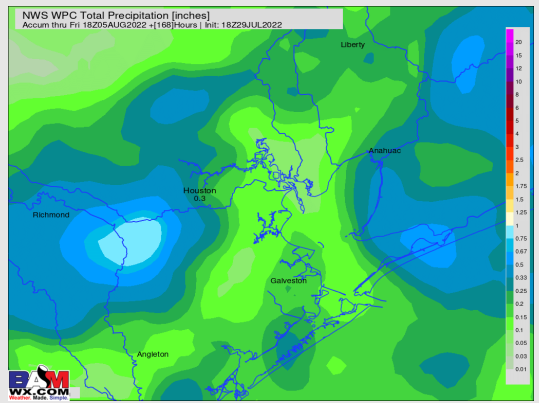
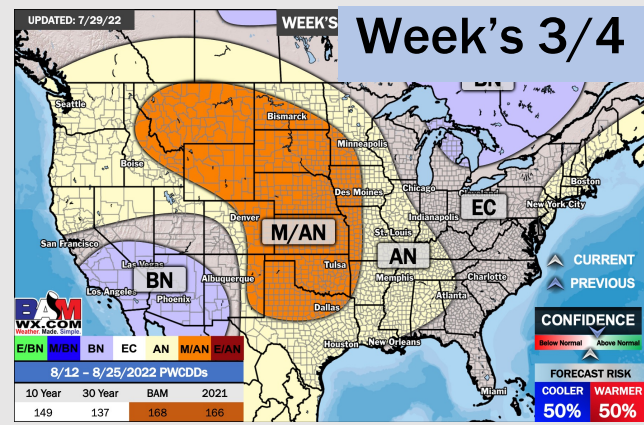
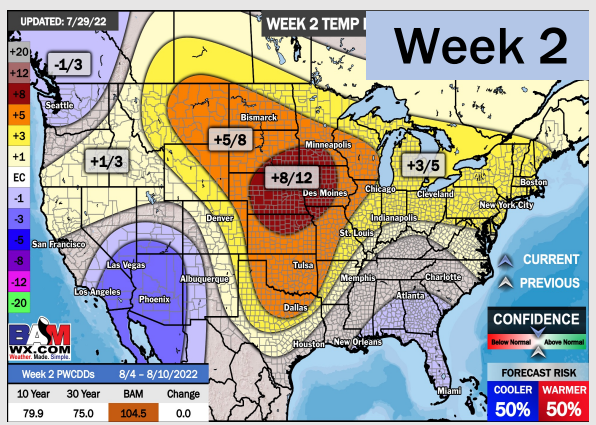
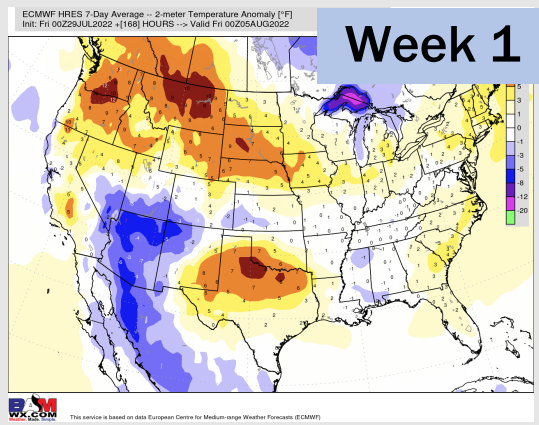


Wind Speed
11 AM CT



High Temps
Sunday

Houston Pilots: 7/29/22



- Another week with above normal temperatures. Daily, scattered chances for precipitation will be possible over the next few days, but not widespread heavy threats at this time.
- Week 2 likely features normal risks for temperatures and below normal precipitation risks.
- The weeks 3/4 timeframe into the first couple weeks of August looks to feature above normal temperatures and below normal risks for precip.