

# Houston Pilots Forecast Package

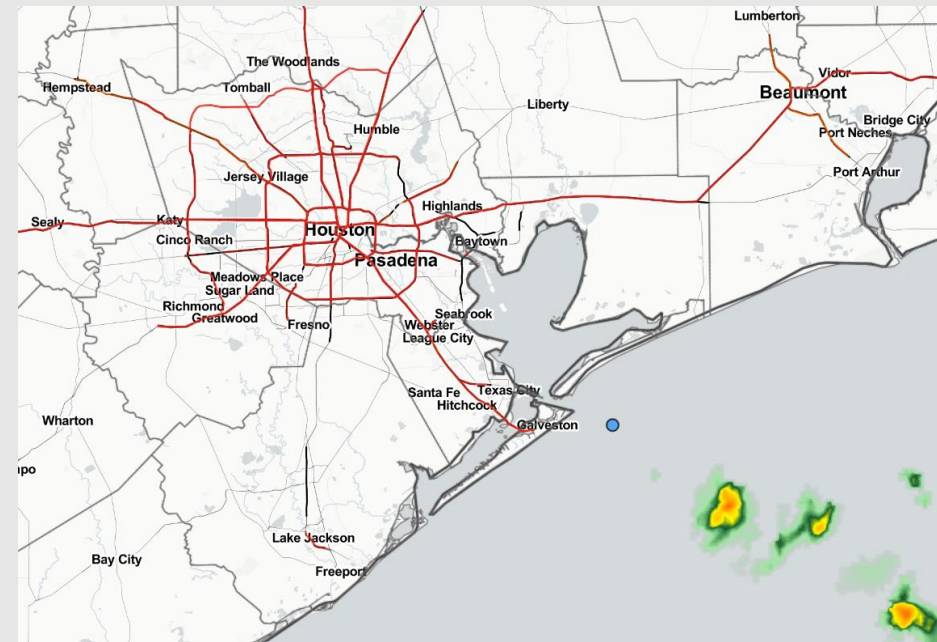


Updated: 5:00 AM CT  
Friday, July 29, 2022

Forecaster: Alyssa McClung

## Weather Headlines

- A few minor chances for precipitation the next few days (theme stays isolated / hit and miss) – nothing significant in terms of high precip chances with more dry time than not.
- Flow will stay predominately out of the S/SSE over the next few days.
- Not favoring any tropical threats the next 7 days.
- Above average temperatures look to continue into August.



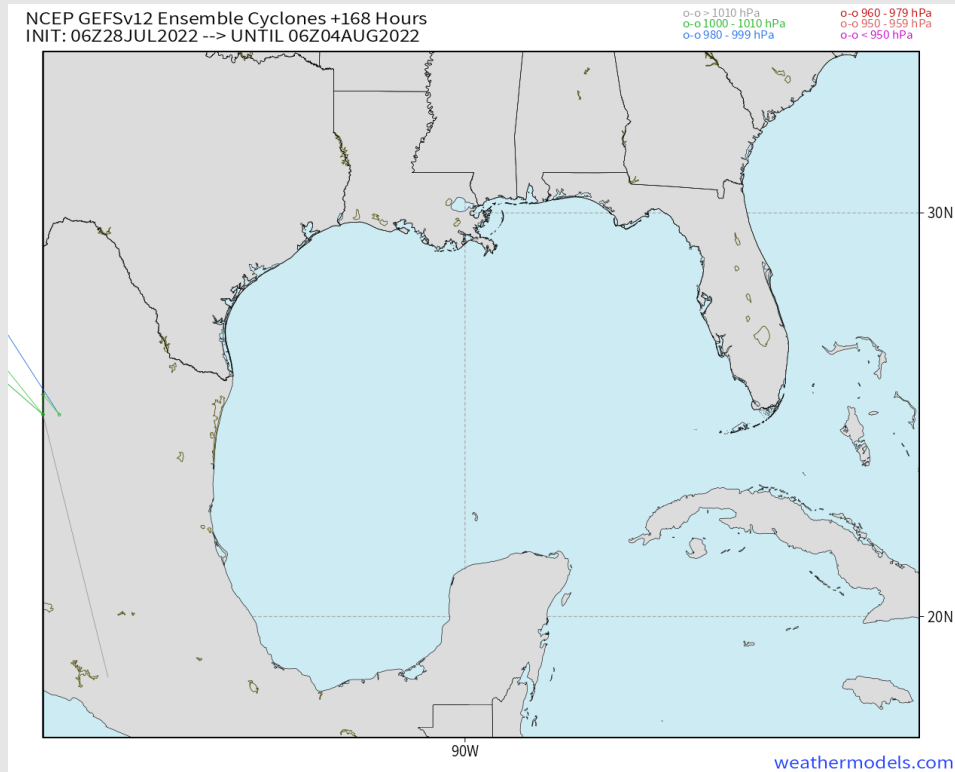
**Radar/ NWS Alerts: 5:00 AM CT**



As always, please do not hesitate to reach out to us with any forecast questions via the chat option on the Weather Porthole or our on-call number, **(317)-560-8122** press 1 for forecast questions.

# Houston Pilots Extended Range Tropical Report

## Various model tracks next 7 days



Not favoring any tropical threats the next 7 days.

## Confidence

Above  
Normal

Below  
Normal

The image contains two logos. On the left is the logo for BAM WX.COM, featuring the letters 'BAM' in a stylized font with a white 'A' and a black dot, followed by 'WX.COM' in black and 'Weather. Made. Simple.' in blue and red below it. On the right is the logo for Houston Pilots, featuring a large red 'H' with the text 'Houston Pilots' in white to its right.



Time	07-29- 2022 Fri 1am	07-29- 2022 Fri 2am	07-29- 2022 Fri 3am	07-29- 2022 Fri 4am	07-29- 2022 Fri 5am	07-29- 2022 Fri 6am	07-29- 2022 Fri 7am	07-29- 2022 Fri 8am	07-29- 2022 Fri 9am	07-29- 2022 Fri 10am	07-29- 2022 Fri 11am	07-29- 2022 Fri 12pm	07-29- 2022 Fri 1pm	07-29- 2022 Fri 2pm	07-29- 2022 Fri 3pm	07-29- 2022 Fri 4pm	07-29- 2022 Fri 5pm	07-29- 2022 Fri 6pm	07-29- 2022 Fri 7pm	07-29- 2022 Fri 8pm	07-29- 2022 Fri 9pm	07-29- 2022 Fri 10pm	07-29- 2022 Fri 11pm	07-30- 2022 Sat 12am	07-30- 2022 Sat 1am	07-30- 2022 Sat 2am	07-30- 2022 Sat 3am	07-30- 2022 Sat 4am	07-30- 2022 Sat 5am	07-30- 2022 Sat 6am	07-30- 2022 Sat 7am	07-30- 2022 Sat 8am	07-30- 2022 Sat 9am	07-30- 2022 Sat 10am	07-30- 2022 Sat 11am	07-30- 2022 Sat 12pm			
Houston Pilots N - 610 Bridge	10.000	10.000	10.000	10.000	10.000	10.000	9.609	10.000	10.000	10.000	10.000	10.000	10.000	10.000	10.000	10.000	10.000	10.000	10.000	10.000	10.000	10.000	10.000	10.000	10.000	10.000	10.000	10.000	10.000	10.000	10.000	10.000	10.000	10.000	10.000	10.000	10.000	10.000	10.000
Houston Pilots M - Kinder 1	10.000	10.000	10.000	10.000	10.000	10.000	9.609	10.000	10.000	10.000	10.000	10.000	10.000	10.000	10.000	10.000	10.000	10.000	10.000	10.000	10.000	10.000	10.000	10.000	10.000	10.000	10.000	10.000	10.000	10.000	10.000	10.000	10.000	10.000	10.000	10.000	10.000	10.000	10.000
Houston Pilots L - Greens Bayou	10.000	10.000	10.000	10.000	10.000	10.000	9.705	10.000	10.000	10.000	10.000	10.000	10.000	10.000	10.000	10.000	10.000	10.000	10.000	10.000	10.000	10.000	10.000	10.000	10.000	10.000	10.000	10.000	10.000	10.000	10.000	10.000	10.000	10.000	10.000	10.000	10.000	10.000	10.000
Houston Pilots K - Shell Crude	10.000	10.000	10.000	10.000	10.000	10.000	10.000	10.000	10.000	10.000	10.000	10.000	10.000	10.000	10.000	10.000	10.000	10.000	10.000	10.000	10.000	10.000	10.000	10.000	10.000	10.000	10.000	10.000	10.000	10.000	10.000	10.000	10.000	10.000	10.000	10.000	10.000	10.000	10.000
Houston Pilots J - Lyndhurst Ferries	10.000	10.000	10.000	10.000	10.000	10.000	10.000	10.000	10.000	10.000	10.000	10.000	10.000	10.000	10.000	10.000	10.000	10.000	10.000	10.000	10.000	10.000	10.000	10.000	10.000	10.000	10.000	10.000	10.000	10.000	10.000	10.000	10.000	10.000	10.000	10.000	10.000	10.000	10.000
Houston Pilots I - Exxon 3	10.000	10.000	10.000	10.000	10.000	10.000	10.000	10.000	10.000	10.000	10.000	10.000	10.000	10.000	10.000	10.000	10.000	10.000	10.000	10.000	10.000	10.000	10.000	10.000	10.000	10.000	10.000	10.000	10.000	10.000	10.000	10.000	10.000	10.000	10.000	10.000	10.000	10.000	10.000
Houston Pilots H - Morgans Point	10.000	10.000	10.000	10.000	10.000	10.000	10.000	10.000	10.000	10.000	10.000	10.000	10.000	10.000	10.000	10.000	10.000	10.000	10.000	10.000	10.000	10.000	10.000	10.000	10.000	10.000	10.000	10.000	10.000	10.000	10.000	10.000	10.000	10.000	10.000	10.000	10.000	10.000	10.000
Houston Pilots G - 75/76	10.000	10.000	10.000	10.000	10.000	10.000	10.000	10.000	10.000	10.000	10.000	10.000	10.000	10.000	10.000	10.000	10.000	10.000	10.000	10.000	10.000	10.000	10.000	10.000	10.000	10.000	10.000	10.000	10.000	10.000	10.000	10.000	10.000	10.000	10.000	10.000	10.000	10.000	10.000
Houston Pilots F - 63/64	10.000	10.000	10.000	10.000	10.000	10.000	10.000	10.000	10.000	10.000	10.000	10.000	10.000	10.000	10.000	10.000	10.000	10.000	10.000	10.000	10.000	10.000	10.000	10.000	10.000	10.000	10.000	10.000	10.000	10.000	10.000	10.000	10.000	10.000	10.000	10.000	10.000	10.000	10.000
Houston Pilots E - 51/52	10.000	10.000	10.000	10.000	10.000	10.000	10.000	10.000	10.000	10.000	10.000	10.000	10.000	10.000	10.000	10.000	10.000	10.000	10.000	10.000	10.000	10.000	10.000	10.000	10.000	10.000	10.000	10.000	10.000	10.000	10.000	10.000	10.000	10.000	10.000	10.000	10.000	10.000	10.000
Houston Pilots D - 37/38	10.000	10.000	10.000	10.000	10.000	10.000	10.000	10.000	10.000	10.000	10.000	10.000	10.000	10.000	10.000	10.000	10.000	10.000	10.000	10.000	10.000	10.000	10.000	10.000	10.000	10.000	10.000	10.000	10.000	10.000	10.000	10.000	10.000	10.000	10.000	10.000	10.000	10.000	10.000
Houston Pilots C - 25/26	10.000	10.000	10.000	10.000	10.000	10.000	10.000	10.000	10.000	10.000	10.000	10.000	10.000	10.000	10.000	10.000	10.000	10.000	10.000	10.000	10.000	10.000	10.000	10.000	10.000	10.000	10.000	10.000	10.000	10.000	10.000	10.000	10.000	10.000	10.000	10.000	10.000	10.000	10.000
Houston Pilots B - 11/12	10.000	10.000	10.000	10.000	10.000	10.000	10.000	10.000	10.000	10.000	10.000	10.000	10.000	10.000	10.000	10.000	10.000	10.000	10.000	10.000	10.000	10.000	10.000	10.000	10.000	10.000	10.000	10.000	10.000	10.000	10.000	10.000	10.000	10.000	10.000	10.000	10.000	10.000	10.000
Houston Pilots A - 1 & 2 Bravo	10.000	10.000	10.000	10.000	10.000	10.000	10.000	10.000	10.000	10.000	10.000	10.000	10.000	10.000	10.000	10.000	10.000	10.000	10.000	10.000	10.000	10.000	10.000	10.000	10.000	10.000	10.000	10.000	10.000	10.000	10.000	10.000	10.000	10.000	10.000	10.000	10.000	10.000	10.000

# Houston Pilots Wind Report



Confidence

Above Normal

Below Normal

Sustained wind 13 MPH

Gusts 18 MPH

Wind from the N

Example

WS: 13  
G:18  
N

Time	07-29-2022 Fri 1am	07-29-2022 Fri 2am	07-29-2022 Fri 3am	07-29-2022 Fri 4am	07-29-2022 Fri 5am	07-29-2022 Fri 6am	07-29-2022 Fri 7am	07-29-2022 Fri 8am	07-29-2022 Fri 9am	07-29-2022 Fri 10am	07-29-2022 Fri 11am	07-29-2022 Fri 12pm	07-29-2022 Fri 1pm	07-29-2022 Fri 2pm	07-29-2022 Fri 3pm	07-29-2022 Fri 4pm	07-29-2022 Fri 5pm	07-29-2022 Fri 6pm	07-29-2022 Fri 7pm	07-29-2022 Fri 8pm	07-29-2022 Fri 9pm	07-29-2022 Fri 10pm	07-29-2022 Fri 11pm	07-30-2022 Sat 12am	07-30-2022 Sat 1am	07-30-2022 Sat 2am	07-30-2022 Sat 3am	07-30-2022 Sat 4am	07-30-2022 Sat 5am	07-30-2022 Sat 6am	07-30-2022 Sat 7am	07-30-2022 Sat 8am	07-30-2022 Sat 9am	07-30-2022 Sat 10am	07-30-2022 Sat 11am	07-30-2022 Sat 12pm	
Houston Pilots N - 610 Bridge	WS: 3 G:7 SE	WS: 3 G:8 SSE	WS: 4 G:10 S	WS: 3 G:11 S	WS: 2 G:10 SW	WS: 0 G:8 SW	WS: 0 G:8 WNW	WS: 3 G:10 SSW	WS: 5 G:9 SSW	WS: 5 G:8 SSW	WS: 4 G:7 SSW	WS: 3 G:6 S	WS: 3 G:11 SE	WS: 9 G:13 SE	WS: 9 G:16 S	WS: 10 G:17 SSE	WS: 11 G:18 S	WS: 10 G:17 SSE	WS: 9 G:16 SSE	WS: 8 G:15 SSE	WS: 7 G:13 S	WS: 5 G:10 S	WS: 4 G:9 S	WS: 3 G:7 S	WS: 3 G:5 S	WS: 2 G:5 S	WS: 2 G:4 S	WS: 1 G:4 S	WS: 1 G:4 S	WS: 1 G:4 S	WS: 1 G:4 S	WS: 2 G:6 SSW	WS: 6 G:9 SSW	WS: 6 G:9 SSW	WS: 6 G:9 SSW	WS: 6 G:9 S	WS: 5 G:9 S
Houston Pilots M - Kinder 1	WS: 3 G:7 SE	WS: 3 G:8 SSE	WS: 4 G:10 S	WS: 3 G:11 S	WS: 1 G:9 SW	WS: 0 G:8 WSW	WS: 1 G:8 WNW	WS: 3 G:10 SSW	WS: 5 G:9 S	WS: 5 G:8 SSW	WS: 4 G:7 SSW	WS: 4 G:6 S	WS: 10 G:13 SE	WS: 9 G:12 SE	WS: 10 G:16 S	WS: 11 G:17 SSE	WS: 10 G:17 SSE	WS: 9 G:16 SSE	WS: 8 G:15 S	WS: 7 G:13 S	WS: 5 G:10 S	WS: 4 G:8 S	WS: 3 G:7 S	WS: 3 G:5 S	WS: 2 G:5 S	WS: 2 G:4 S	WS: 1 G:4 S	WS: 1 G:4 S	WS: 1 G:4 S	WS: 1 G:4 S	WS: 2 G:6 SSW	WS: 6 G:9 SSW	WS: 6 G:9 SSW	WS: 6 G:9 S	WS: 6 G:9 S	WS: 6 G:9 S	
Houston Pilots L - Greens Bayou	WS: 3 G:8 SSE	WS: 3 G:10 S	WS: 4 G:10 S	WS: 3 G:11 S	WS: 2 G:9 SW	WS: 1 G:8 WSW	WS: 1 G:8 W	WS: 3 G:11 SSW	WS: 5 G:12 SSW	WS: 5 G:9 SSW	WS: 4 G:8 SSW	WS: 3 G:7 SSW	WS: 5 G:12 SE	WS: 9 G:12 SE	WS: 10 G:16 S	WS: 11 G:17 SSE	WS: 12 G:17 S	WS: 11 G:16 SSE	WS: 9 G:16 SSE	WS: 8 G:14 S	WS: 7 G:13 S	WS: 6 G:10 S	WS: 4 G:9 S	WS: 3 G:6 S	WS: 3 G:5 S	WS: 2 G:5 S	WS: 2 G:4 S	WS: 1 G:4 SSW	WS: 1 G:3 S	WS: 1 G:3 S	WS: 3 G:6 SSW	WS: 6 G:9 SSW	WS: 6 G:9 SSW	WS: 6 G:9 S	WS: 6 G:9 S	WS: 6 G:9 S	
Houston Pilots K - Shell Crude	WS: 3 G:9 SSE	WS: 4 G:11 S	WS: 4 G:11 S	WS: 4 G:12 S	WS: 2 G:10 SSW	WS: 1 G:9 WSW	WS: 1 G:9 WNW	WS: 3 G:11 SSW	WS: 5 G:12 SSW	WS: 6 G:9 S	WS: 5 G:8 S	WS: 4 G:7 S	WS: 7 G:9 SE	WS: 12 G:16 SE	WS: 10 G:13 SE	WS: 11 G:16 S	WS: 12 G:17 SSE	WS: 12 G:16 SSE	WS: 10 G:15 SSE	WS: 9 G:15 S	WS: 7 G:13 S	WS: 6 G:10 S	WS: 4 G:9 S	WS: 3 G:7 S	WS: 3 G:6 S	WS: 3 G:5 S	WS: 2 G:4 S	WS: 1 G:4 S	WS: 1 G:3 S	WS: 1 G:3 S	WS: 3 G:6 SSW	WS: 6 G:9 SSW	WS: 6 G:9 SSW	WS: 6 G:9 S	WS: 6 G:9 S	WS: 6 G:9 S	
Houston Pilots J - Lynchburg Ferries	WS: 3 G:11 S	WS: 4 G:12 S	WS: 4 G:13 S	WS: 4 G:13 S	WS: 2 G:11 SW	WS: 2 G:9 W	WS: 1 G:9 W	WS: 3 G:12 SSW	WS: 6 G:12 SSW	WS: 6 G:9 S	WS: 4 G:8 S	WS: 4 G:7 S	WS: 8 G:9 SSE	WS: 12 G:16 SE	WS: 11 G:14 SSE	WS: 12 G:16 S	WS: 13 G:17 SSE	WS: 12 G:16 SSE	WS: 10 G:15 SSE	WS: 9 G:15 S	WS: 8 G:13 S	WS: 7 G:11 S	WS: 6 G:10 S	WS: 4 G:8 S	WS: 4 G:7 S	WS: 3 G:6 S	WS: 3 G:5 S	WS: 2 G:4 SSW	WS: 2 G:3 SSW	WS: 2 G:3 SSW	WS: 3 G:6 SSW	WS: 6 G:9 SSW	WS: 7 G:9 SSW	WS: 6 G:9 S	WS: 6 G:9 S	WS: 7 G:9 S	
Houston Pilots I - Exxon 3	WS: 5 G:13 S	WS: 5 G:14 S	WS: 5 G:15 S	WS: 5 G:16 S	WS: 4 G:14 SSW	WS: 3 G:12 WSW	WS: 2 G:10 WNW	WS: 4 G:12 SSW	WS: 6 G:12 SSW	WS: 7 G:9 S	WS: 6 G:8 S	WS: 7 G:8 SSE	WS: 10 G:12 SSE	WS: 13 G:16 SSE	WS: 13 G:16 SSE	WS: 13 G:17 SSE	WS: 13 G:17 S	WS: 12 G:16 SSE	WS: 11 G:16 S	WS: 9 G:15 S	WS: 8 G:13 S	WS: 7 G:11 S	WS: 6 G:10 S	WS: 5 G:9 S	WS: 5 G:8 S	WS: 4 G:8 SSW	WS: 3 G:7 SSW	WS: 3 G:6 SSW	WS: 2 G:5 SSW	WS: 2 G:5 SSW	WS: 2 G:5 SSW	WS: 4 G:9 SSW	WS: 6 G:10 SSW	WS: 7 G:10 S	WS: 7 G:9 S	WS: 7 G:9 S	WS: 8 G:10 SSE
Houston Pilots H - Morgans Point	WS: 8 G:14 S	WS: 8 G:15 S	WS: 9 G:15 S	WS: 9 G:17 S	WS: 7 G:15 SSW	WS: 6 G:14 SW	WS: 4 G:12 W	WS: 5 G:12 SSW	WS: 7 G:12 SSW	WS: 8 G:10 S	WS: 7 G:9 SSE	WS: 9 G:10 SE	WS: 13 G:15 SE	WS: 14 G:17 SSE	WS: 15 G:17 SE	WS: 13 G:16 SSE	WS: 13 G:17 SSE	WS: 13 G:17 S	WS: 11 G:16 S	WS: 10 G:15 S	WS: 9 G:14 S	WS: 8 G:13 S	WS: 8 G:12 S	WS: 7 G:11 S	WS: 6 G:11 S	WS: 6 G:10 S	WS: 5 G:9 SSW	WS: 4 G:8 SSW	WS: 4 G:8 SSW	WS: 4 G:8 SSW	WS: 6 G:9 SSW	WS: 7 G:10 S	WS: 7 G:9 S	WS: 7 G:9 S	WS: 8 G:10 SSE		
Houston Pilots G - 75/76	WS: 11 G:14 S	WS: 11 G:15 S	WS: 12 G:15 S	WS: 13 G:17 S	WS: 11 G:16 SSW	WS: 10 G:15 SSW	WS: 7 G:12 SSW	WS: 7 G:11 SSW	WS: 8 G:10 SSW	WS: 8 G:10 S	WS: 8 G:9 SSE	WS: 9 G:10 SSE	WS: 18 G:19 SE	WS: 16 G:17 SSE	WS: 19 G:21 SSE	WS: 14 G:17 SSE	WS: 14 G:17 S	WS: 13 G:17 S	WS: 13 G:17 S	WS: 12 G:17 S	WS: 12 G:16 S	WS: 11 G:16 S	WS: 10 G:15 S	WS: 9 G:14 S	WS: 9 G:13 S	WS: 8 G:12 S	WS: 7 G:12 S	WS: 6 G:11 SSW	WS: 6 G:11 SSW	WS: 6 G:10 SSW	WS: 6 G:10 SSW	WS: 6 G:10 SSW	WS: 6 G:10 S	WS: 6 G:10 S	WS: 7 G:10 S	WS: 7 G:10 S	WS: 8 G:11 SSE
Houston Pilots F - 63/64	WS: 12 G:14 S	WS: 12 G:15 S	WS: 12 G:15 S	WS: 13 G:17 S	WS: 12 G:16 SSW	WS: 11 G:15 SSW	WS: 9 G:13 SSW	WS: 8 G:12 SSW	WS: 8 G:11 S	WS: 8 G:10 S	WS: 8 G:9 SE	WS: 19 G:20 SSE	WS: 19 G:16 SSE	WS: 19 G:16 SSE	WS: 14 G:18 SSE	WS: 14 G:17 S	WS: 13 G:17 S	WS: 13 G:17 S	WS: 12 G:17 S	WS: 12 G:16 S	WS: 11 G:16 S	WS: 10 G:15 S	WS: 10 G:15 S	WS: 10 G:14 S	WS: 10 G:14 S	WS: 9 G:13 S	WS: 8 G:12 SSW	WS: 8 G:12 SSW	WS: 7 G:11 SSW	WS: 7 G:11 SSW	WS: 7 G:11 SSW	WS: 7 G:10 S	WS: 7 G:10 S	WS: 8 G:11 SSE	WS: 8 G:11 SSE		
Houston Pilots E - 51/52	WS: 13 G:15 S	WS: 12 G:15 S	WS: 12 G:15 S	WS: 14 G:16 S	WS: 13 G:16 S	WS: 11 G:14 SSW	WS: 10 G:13 SSW	WS: 14 G:17 SSW	WS: 12 G:14 S	WS: 9 G:10 S	WS: 8 G:10 SSE	WS: 9 G:9 SSE	WS: 16 G:17 SSE	WS: 14 G:15 SSE	WS: 17 G:18 SSE	WS: 14 G:18 S	WS: 14 G:17 S	WS: 13 G:18 S	WS: 13 G:17 S	WS: 12 G:17 S	WS: 12 G:16 S	WS: 12 G:16 S	WS: 11 G:15 S	WS: 11 G:15 S	WS: 11 G:15 S	WS: 10 G:14 S	WS: 10 G:14 S	WS: 9 G:13 S	WS: 8 G:12 SSW	WS: 8 G:12 SSW	WS: 7 G:11 SSW	WS: 7 G:11 SSW	WS: 8 G:11 SSW	WS: 8 G:11 S	WS: 7 G:11 S	WS: 8 G:10 S	WS: 9 G:11 SSE
Houston Pilots D - 37/38	WS: 13 G:15 S	WS: 12 G:15 S	WS: 12 G:15 S	WS: 13 G:16 S	WS: 13 G:16 S	WS: 11 G:14 SSW	WS: 10 G:13 SSW	WS: 22 G:24 SSW	WS: 16 G:17 S	WS: 8 G:10 S	WS: 8 G:11 S	WS: 9 G:10 S	WS: 13 G:15 SSE	WS: 13 G:14 SSE	WS: 15 G:16 S	WS: 13 G:16 S	WS: 13 G:17 S	WS: 13 G:17 S	WS: 13 G:16 S	WS: 12 G:16 S	WS: 12 G:16 S	WS: 11 G:15 S	WS: 11 G:15 S	WS: 11 G:15 S	WS: 11 G:14 S	WS: 10 G:14 S	WS: 10 G:13 S	WS: 9 G:12 S	WS: 8 G:12 S	WS: 8 G:12 S	WS: 8 G:11 S	WS: 8 G:11 S	WS: 8 G:11 S	WS: 8 G:11 S	WS: 8 G:11 S	WS: 8 G:11 S	WS: 9 G:11 S
Houston Pilots C - 25/26	WS: 11 G:15 S	WS: 11 G:15 S	WS: 11 G:14 S	WS: 11 G:16 S	WS: 11 G:16 S	WS: 10 G:14 SSW	WS: 9 G:13 SSW	WS: 19 G:22 SW	WS: 13 G:16 S	WS: 7 G:10 S	WS: 9 G:11 S	WS: 12 G:13 S	WS: 11 G:14 S	WS: 12 G:15 S	WS: 14 G:16 S	WS: 13 G:17 S	WS: 13 G:16 S	WS: 13 G:16 S	WS: 12 G:16 S	WS: 12 G:16 S	WS: 11 G:15 S	WS: 11 G:15 S	WS: 11 G:15 S	WS: 11 G:15 S	WS: 11 G:14 S	WS: 10 G:14 S	WS: 10 G:13 S	WS: 9 G:12 S	WS: 8 G:12 S	WS: 8 G:12 S	WS: 8 G:11 S	WS: 8 G:11 S	WS: 8 G:11 S	WS: 8 G:11 S	WS: 8 G:11 S	WS: 8 G:11 S	WS: 9 G:11 S
Houston Pilots B - 11/12	WS: 12 G:16 S	WS: 12 G:15 S	WS: 12 G:14 S	WS: 12 G:16 S	WS: 12 G:16 S	WS: 10 G:14 SSW	WS: 10 G:13 SSW	WS: 16 G:19 WSW	WS: 13 G:16 SSW	WS: 7 G:9 SSW	WS: 8 G:11 S	WS: 12 G:14 S	WS: 8 G:12 SSW	WS: 10 G:13 S	WS: 13 G:15 S	WS: 12 G:16 S	WS: 12 G:16 S	WS: 13 G:16 S	WS: 12 G:16 S	WS: 12 G:16 S	WS: 12 G:15 S	WS: 12 G:15 S	WS: 12 G:15 S	WS: 12 G:15 S	WS: 12 G:15 S	WS: 11 G:15 S	WS: 11 G:14 S	WS: 10 G:13 S	WS: 10 G:13 S	WS: 9 G:12 S	WS: 9 G:12 S	WS: 9 G:11 S	WS: 9 G:11 S	WS: 8 G:11 S	WS: 8 G:11 S	WS: 8 G:11 S	WS: 9 G:11 S
Houston Pilots A - 1 & 2 Bravo	WS: 16 G:17 S	WS: 15 G:15 S	WS: 14 G:15 S	WS: 15 G:16 S	WS: 15 G:16 S	WS: 14 G:15 SSW	WS: 15 G:16 SSW	WS: 14 G:14 SSW	WS: 14 G:15 SW	WS: 7 G:10 SW	WS: 7 G:11 SSW	WS: 9 G:10 S	WS: 9 G:11 WSW	WS: 9 G:11 S	WS: 13 G:14 S	WS: 12 G:15 S	WS: 12 G:16 S	WS: 13 G:16 S	WS: 13 G:16 S	WS: 13 G:17 S	WS: 13 G:16 S	WS: 13 G:16 S	WS: 13 G:16 S	WS: 13 G:16 S	WS: 13 G:16 S	WS: 12 G:15 S	WS: 12 G:15 S	WS: 11 G:15 S	WS: 11 G:14 S	WS: 10 G:13 S	WS: 10 G:13 S	WS: 9 G:12 S	WS: 9 G:12 S	WS: 9 G:11 S	WS: 8 G:11 S	WS: 8 G:10 S	WS: 8 G:10 S

See slides below for official thoughts on winds.



# Houston Pilots: Fri. 7/29/2022

## Forecast Discussion

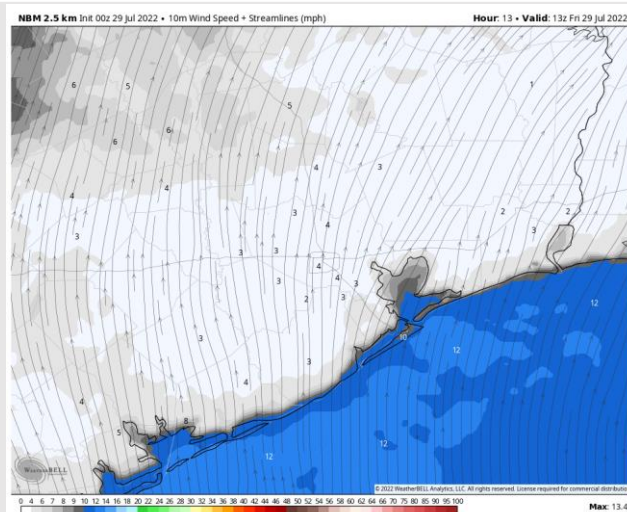
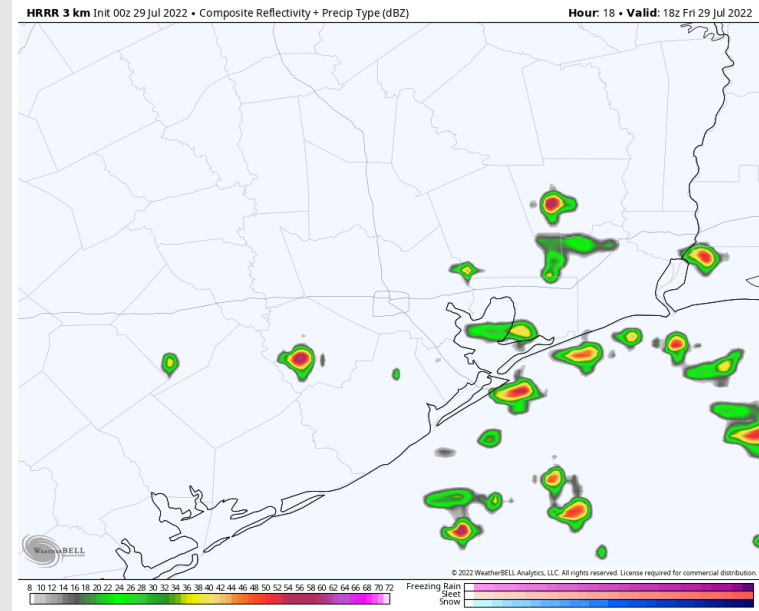
**Precip:** Isolated chances for a few showers are possible this morning at around 20%. These chances for showers/ thunderstorms will increase to 40-50% after 1PM lasting until 7PM. After 7PM, expecting chances to decrease to 10% until 9PM. Moderate to heavy downpours and few lightning strikes possible under the strongest cells. Drier conditions anticipated for the overnight hours.

**Wind:** Sustained winds look to be 10-15 MPH out of the south for this morning with winds north of Morgan's Point lighter at 3-8 MPH. Winds slowly decrease to 8-13 MPH by 2PM out of the SSE before picking back up to 10-15 MPH by 10PM with winds north of Morgan's point again slowing to 3-8 MPH. A few gusts to 20-25 MPH are possible, especially after 2 PM.

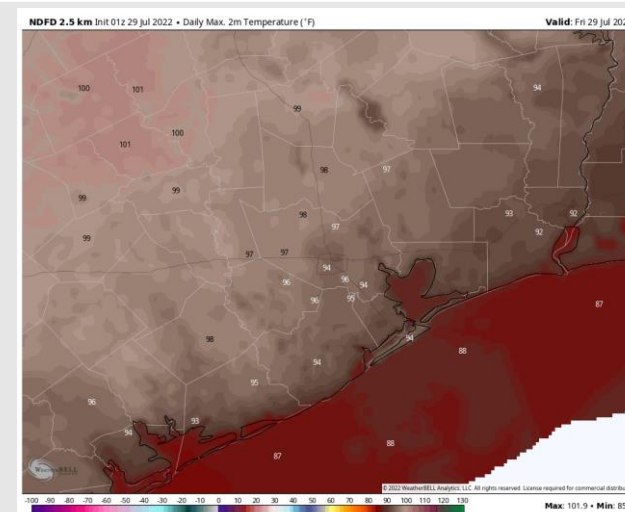
**Temps:** High Temps look to once again reach the mid 90s F today. Boarding station in the upper 80s F.

**Visibility:** Not anticipating any fog concerns at this time.

## Precip Forecast: 1 PM CT



Wind Speed  
8 AM CT



High Temps  
Today

# Houston Pilots: Sat. 7/30/2022

## Forecast Discussion

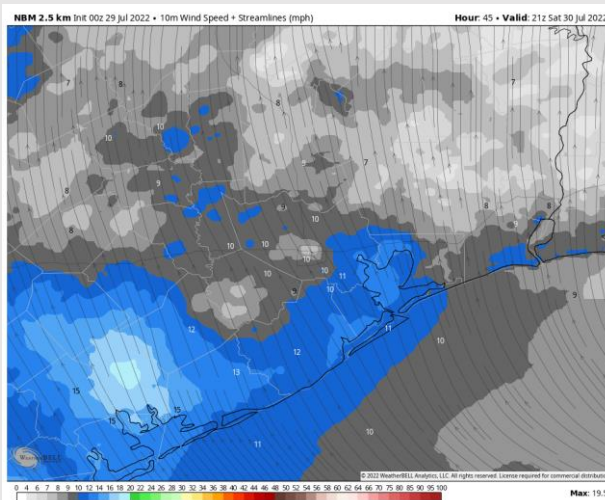
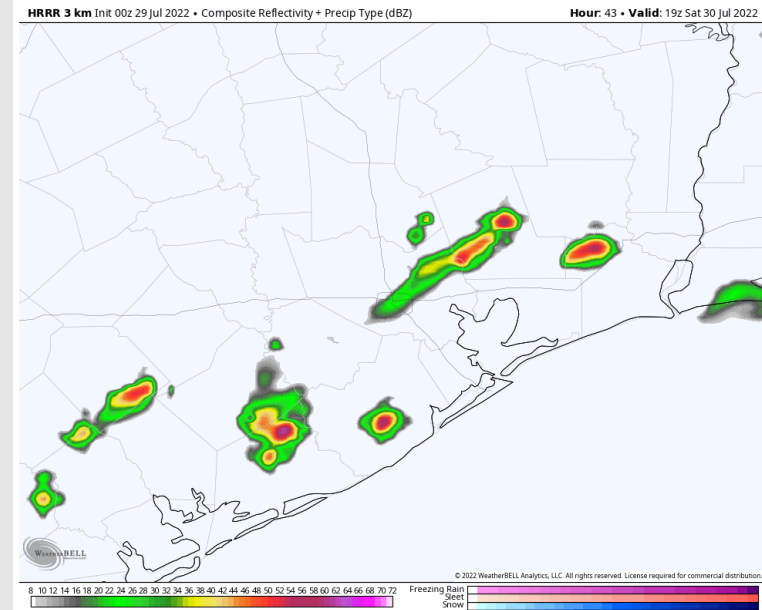
**Precip:** Isolated chances (~30%) for hit and miss showers/thunderstorms will be possible starting ~9AM out through 5PM before chances wind down to 10%. Moderate to heavy downpours and a couple lightning strikes cannot be ruled out under the strongest cells. Favoring drier conditions into the overnight.

**Wind:** Winds out of the south 10-15 MPH most of the AM, then calming to 5-10 MPH and veering from the SE ~10 AM. Winds north of Morgan's Point staying a bit calmer around 3-8 MPH. Sustained winds then pick back up in the early PM to 8-13 MPH and will continue into the rest of the night. Gusts are possible of 20-25 MPH from 12 PM and last throughout the night.

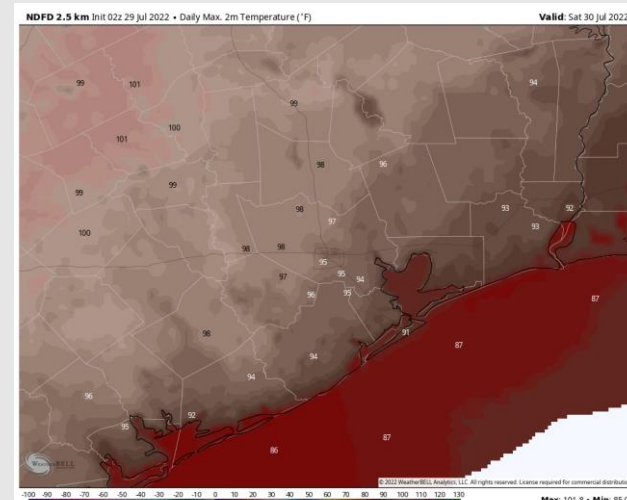
**Temps:** Highs Saturday read the upper 80s F near the boarding station and mid 90s F for all other stations.

**Visibility:** Not anticipating any fog concerns at this time.

## Precip Forecast: 2 PM CT



Wind Speed  
4 PM CT



High Temps  
Saturday

# Houston Pilots: Sun. 7/31/2022

## Forecast Discussion

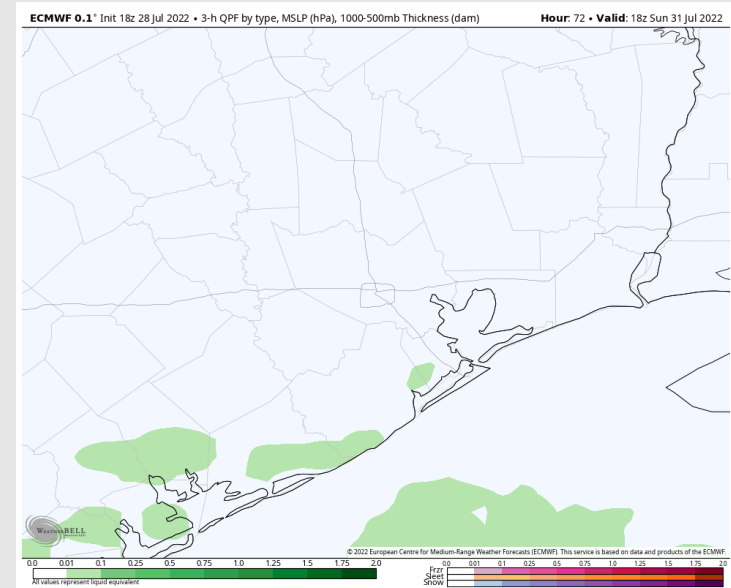
**Precip:** An isolated shower is possible Sunday in the early PM until around 6 PM, with better chances further into the Gulf. Overall favoring dry conditions for most of the day.

**Wind:** Sustained winds Sunday out of the SE 10-15 MPH in the early AM with winds north of Morgan's Point a bit calmer. Winds slowly decrease midday to 8-13 MPH sustained before increasing up to 13-18 MPH in the PM.

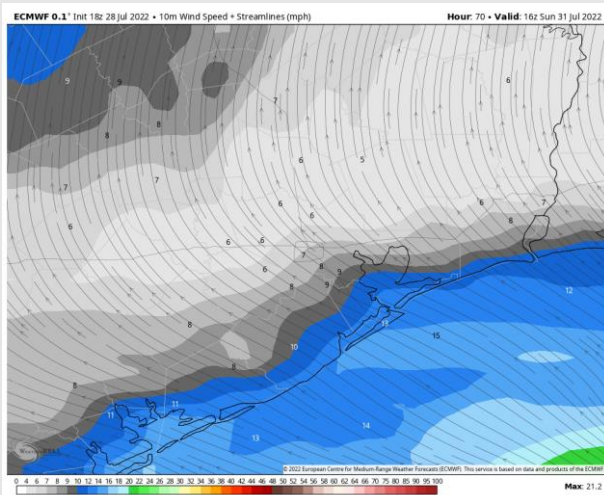
**Temps:** High temps in the mid 80s F near the boarding station and in the mid 90s F for most stations.

**Visibility:** Not anticipating fog concerns at this time.

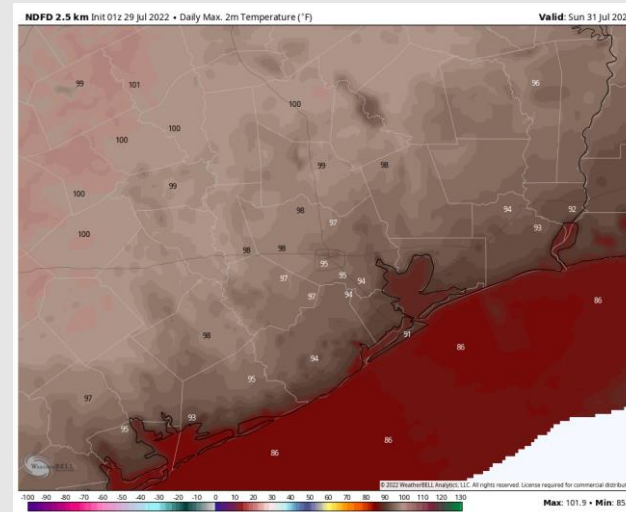
## Precip Forecast: 1 PM CT



Wind Speed  
11 AM CT

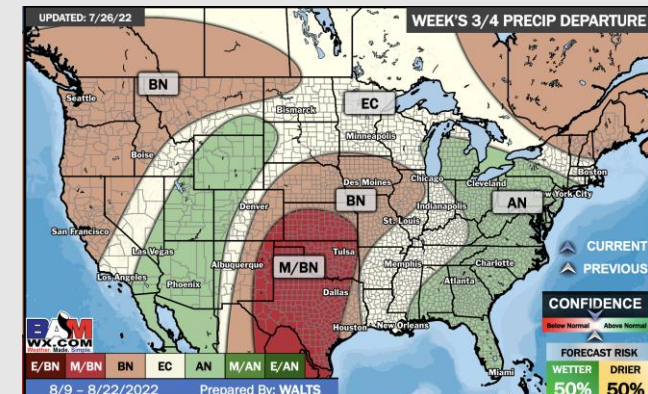
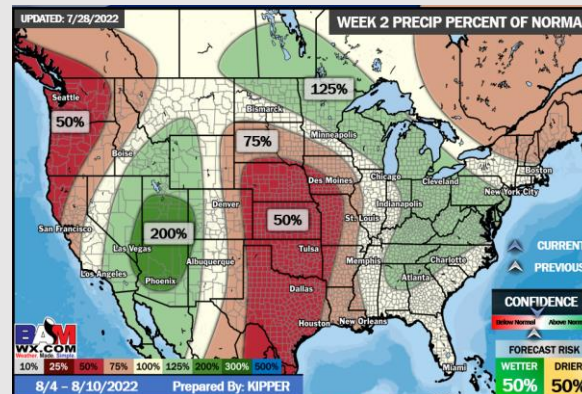
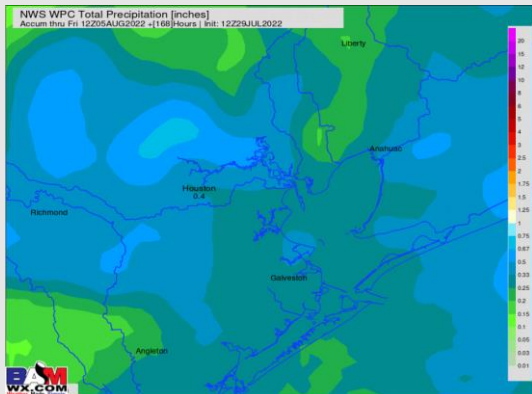
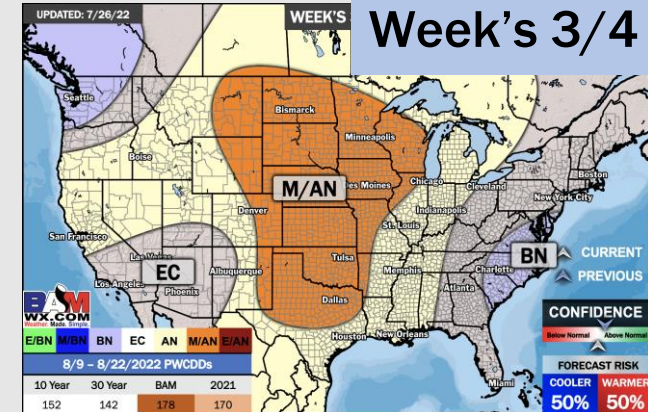
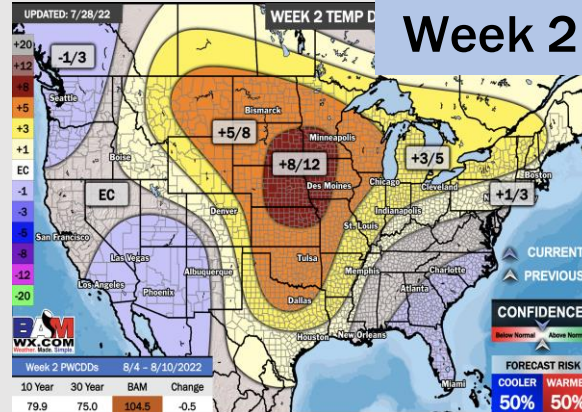
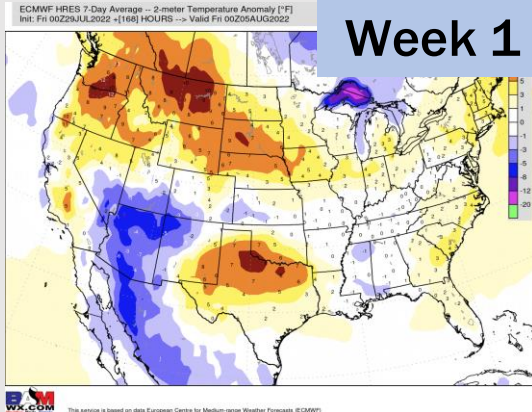


High Temps  
Sunday





# Houston Pilots: 7/29/2022



- Another week with above normal temperatures. Daily, scattered chances for precipitation will be possible over the next few days, but not widespread heavy threats at this time.
- Week 2 likely features above normal risks for temperatures and below normal precipitation risks.
- The weeks 3/4 timeframe into mid-August looks to feature above normal temperatures and below normal risks for precip.