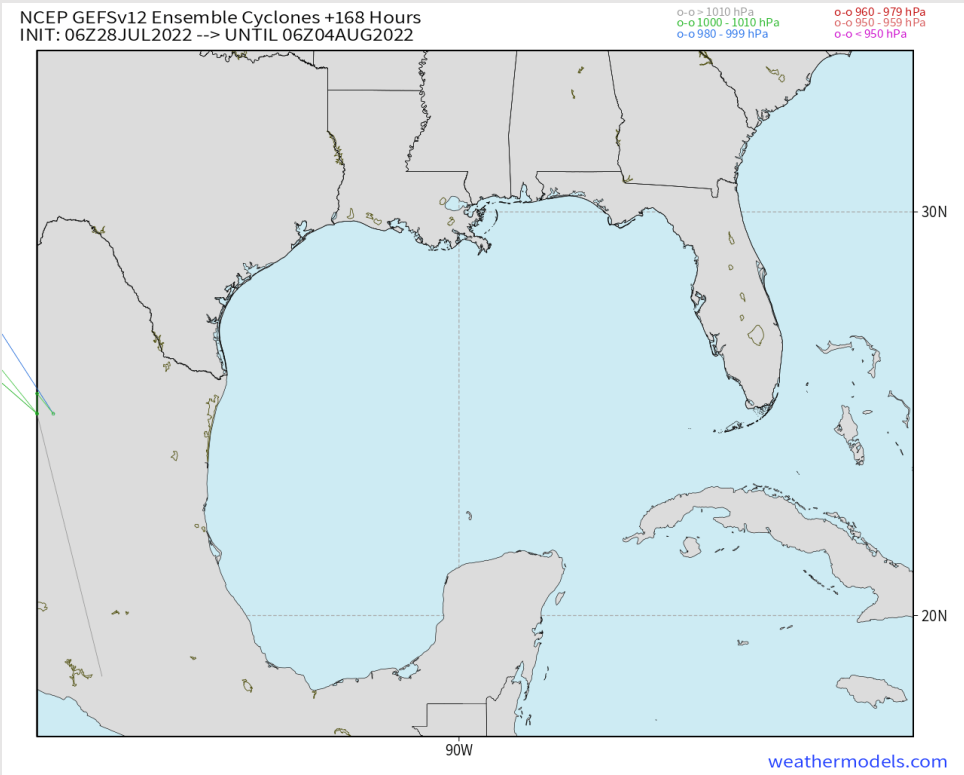


Various model tracks next 7 days



Not favoring any tropical threats the next 7 days.

Confidence



Above Normal Below Normal

Houston Pilots Wind Report



Example

Sustained wind 13 MPH
Gusts 18 MPH
Wind from the N

WS: 13
G:18
N

Time	07-28-2022 Thu 1pm	07-28-2022 Thu 2pm	07-28-2022 Thu 3pm	07-28-2022 Thu 4pm	07-28-2022 Thu 5pm	07-28-2022 Thu 6pm	07-28-2022 Thu 7pm	07-28-2022 Thu 8pm	07-28-2022 Thu 9pm	07-28-2022 Thu 10pm	07-28-2022 Thu 11pm	07-28-2022 Thu 12am	07-29-2022 Fri 1am	07-29-2022 Fri 2am	07-29-2022 Fri 3am	07-29-2022 Fri 4am	07-29-2022 Fri 5am	07-29-2022 Fri 6am	07-29-2022 Fri 7am	07-29-2022 Fri 8am	07-29-2022 Fri 9am	07-29-2022 Fri 10am	07-29-2022 Fri 11am	07-29-2022 Fri 12pm	07-29-2022 Fri 1pm	07-29-2022 Fri 2pm	07-29-2022 Fri 3pm	07-29-2022 Fri 4pm	07-29-2022 Fri 5pm	07-29-2022 Fri 6pm	07-29-2022 Fri 7pm	07-29-2022 Fri 8pm	07-29-2022 Fri 9pm	07-29-2022 Fri 10pm	07-29-2022 Fri 11pm	07-30-2022 Sat 12am		
Houston Pilots N - 610 Bridge	WS: 5 G:7 S	WS: 7 G:9 SSE	WS: 9 G:15 SW	WS: 6 G:13 WSW	WS: 5 G:11 SSW	WS: 9 G:14 SSE	WS: 8 G:13 SSE	WS: 8 G:15 SSE	WS: 8 G:17 SSE	WS: 7 G:18 S	WS: 7 G:18 S	WS: 6 G:17 S	WS: 4 G:12 SSW	WS: 4 G:10 S	WS: 3 G:9 S	WS: 3 G:6 S	WS: 2 G:5 S	WS: 2 G:5 S	WS: 2 G:5 S	WS: 3 G:8 S	WS: 7 G:10 S	WS: 7 G:11 SSW	WS: 7 G:11 S	WS: 7 G:10 S	WS: 7 G:10 S	WS: 8 G:13 S	WS: 8 G:14 S	WS: 8 G:15 SSE	WS: 9 G:16 SSE	WS: 10 G:17 SSE	WS: 11 G:17 SSE	WS: 11 G:17 SSE	WS: 9 G:16 SSE	WS: 8 G:14 S	WS: 7 G:12 S	WS: 5 G:8 S	WS: 4 G:8 S	
Houston Pilots M - Kinder 1	WS: 5 G:8 S	WS: 9 G:11 SE	WS: 9 G:15 SW	WS: 6 G:13 SW	WS: 6 G:11 SSW	WS: 10 G:14 SSE	WS: 9 G:13 SSE	WS: 8 G:15 SSE	WS: 8 G:17 SSE	WS: 7 G:18 S	WS: 7 G:18 S	WS: 6 G:17 S	WS: 4 G:12 SSW	WS: 4 G:10 S	WS: 3 G:9 S	WS: 2 G:5 S	WS: 2 G:5 S	WS: 2 G:5 S	WS: 2 G:5 S	WS: 3 G:7 S	WS: 7 G:10 S	WS: 7 G:11 SSW	WS: 7 G:11 S	WS: 7 G:10 S	WS: 8 G:12 S	WS: 8 G:14 S	WS: 8 G:15 SSE	WS: 9 G:16 SSE	WS: 10 G:17 SSE	WS: 11 G:17 SSE	WS: 11 G:17 SSE	WS: 9 G:16 SSE	WS: 8 G:14 S	WS: 7 G:12 S	WS: 5 G:8 S	WS: 4 G:8 S		
Houston Pilots L - Greens Bayou	WS: 5 G:8 S	WS: 10 G:13 SE	WS: 10 G:15 SSW	WS: 8 G:12 SW	WS: 10 G:14 SSE	WS: 9 G:13 SSE	WS: 9 G:14 SSE	WS: 9 G:16 SSE	WS: 8 G:18 SSE	WS: 8 G:18 S	WS: 6 G:16 S	WS: 4 G:12 SSW	WS: 4 G:10 S	WS: 3 G:9 S	WS: 2 G:5 S	WS: 2 G:5 S	WS: 2 G:5 S	WS: 2 G:4 S	WS: 2 G:4 S	WS: 3 G:7 S	WS: 7 G:10 S	WS: 7 G:11 SSW	WS: 7 G:11 S	WS: 7 G:10 S	WS: 8 G:12 S	WS: 8 G:13 S	WS: 9 G:14 SSE	WS: 10 G:15 SSE	WS: 10 G:16 SSE	WS: 11 G:17 SSE	WS: 11 G:17 SSE	WS: 9 G:16 SSE	WS: 8 G:14 S	WS: 7 G:12 S	WS: 6 G:9 S	WS: 5 G:8 S		
Houston Pilots K - Shell Crude	WS: 7 G:10 SSE	WS: 11 G:14 SE	WS: 10 G:14 SSW	WS: 8 G:12 SSE	WS: 10 G:14 SSE	WS: 11 G:16 SSE	WS: 10 G:14 SSE	WS: 9 G:14 SSE	WS: 8 G:16 SSE	WS: 7 G:17 S	WS: 7 G:18 S	WS: 6 G:16 S	WS: 4 G:13 SSW	WS: 3 G:10 S	WS: 3 G:9 S	WS: 2 G:5 S	WS: 2 G:5 S	WS: 2 G:4 S	WS: 2 G:4 SSW	WS: 4 G:7 S	WS: 7 G:10 SSW	WS: 8 G:11 SSW	WS: 8 G:11 S	WS: 8 G:10 S	WS: 8 G:12 S	WS: 9 G:13 SSE	WS: 9 G:14 SSE	WS: 10 G:15 SSE	WS: 10 G:16 SSE	WS: 11 G:16 SSE	WS: 11 G:16 SSE	WS: 11 G:16 SSE	WS: 10 G:16 SSE	WS: 9 G:13 S	WS: 7 G:12 S	WS: 6 G:9 S	WS: 5 G:8 S	
Houston Pilots J - Lynchburg Ferries	WS: 8 G:11 SSE	WS: 11 G:15 SE	WS: 11 G:15 S	WS: 10 G:13 SSE	WS: 12 G:16 SSE	WS: 13 G:18 SSE	WS: 10 G:14 SSE	WS: 9 G:14 SSE	WS: 8 G:16 SSE	WS: 7 G:17 S	WS: 7 G:18 S	WS: 6 G:17 S	WS: 4 G:14 SSW	WS: 3 G:11 S	WS: 3 G:10 S	WS: 3 G:7 S	WS: 3 G:5 SSW	WS: 3 G:5 SSW	WS: 3 G:4 SSW	WS: 4 G:8 SSW	WS: 7 G:10 SSW	WS: 8 G:11 SSW	WS: 8 G:11 S	WS: 8 G:11 S	WS: 9 G:12 S	WS: 10 G:13 SSE	WS: 10 G:14 SSE	WS: 11 G:15 SSE	WS: 12 G:16 SSE	WS: 12 G:17 SSE	WS: 12 G:17 SSE	WS: 10 G:16 SSE	WS: 9 G:13 S	WS: 8 G:12 S	WS: 7 G:10 S	WS: 6 G:8 S		
Houston Pilots I - Exxon 3	WS: 11 G:14 SSE	WS: 13 G:17 SE	WS: 14 G:18 SSE	WS: 12 G:16 SSE	WS: 13 G:18 SSE	WS: 14 G:19 SSE	WS: 13 G:15 SSE	WS: 9 G:15 S	WS: 8 G:16 S	WS: 8 G:17 S	WS: 8 G:18 S	WS: 6 G:17 SSW	WS: 5 G:16 SSW	WS: 4 G:14 S	WS: 4 G:13 S	WS: 4 G:9 S	WS: 4 G:8 S	WS: 3 G:6 SSW	WS: 3 G:6 SSW	WS: 5 G:8 SSW	WS: 8 G:10 SSW	WS: 8 G:11 SSW	WS: 8 G:11 S	WS: 9 G:11 S	WS: 10 G:13 SSE	WS: 11 G:14 SSE	WS: 11 G:15 SSE	WS: 12 G:16 SSE	WS: 12 G:17 SSE	WS: 13 G:17 SSE	WS: 13 G:17 SSE	WS: 11 G:16 S	WS: 9 G:14 S	WS: 8 G:12 S	WS: 7 G:10 S	WS: 6 G:10 S		
Houston Pilots H - Morgans Point	WS: 13 G:15 SE	WS: 15 G:18 SE	WS: 16 G:20 SSE	WS: 15 G:18 SSE	WS: 15 G:19 SSE	WS: 15 G:19 SSE	WS: 12 G:16 SSE	WS: 11 G:15 S	WS: 10 G:16 S	WS: 10 G:16 S	WS: 10 G:17 S	WS: 10 G:18 SSW	WS: 8 G:17 SSW	WS: 7 G:15 SSW	WS: 7 G:15 SSW	WS: 6 G:12 SSW	WS: 5 G:10 SSW	WS: 5 G:9 SSW	WS: 5 G:9 SSW	WS: 6 G:10 SSW	WS: 8 G:11 SSW	WS: 8 G:11 S	WS: 9 G:12 SSW	WS: 9 G:12 S	WS: 11 G:14 SSE	WS: 12 G:15 SSE	WS: 12 G:16 SSE	WS: 13 G:16 SSE	WS: 13 G:17 SSE	WS: 13 G:18 SSE	WS: 13 G:18 SSE	WS: 13 G:18 SSE	WS: 11 G:17 S	WS: 10 G:15 S	WS: 9 G:13 S	WS: 8 G:12 S	WS: 7 G:12 S	
Houston Pilots G - 75/76	WS: 15 G:16 SSE	WS: 17 G:19 SSE	WS: 19 G:21 SSE	WS: 17 G:18 SSE	WS: 17 G:19 SSE	WS: 16 G:17 SSE	WS: 13 G:16 S	WS: 13 G:16 S	WS: 13 G:16 S	WS: 13 G:16 S	WS: 13 G:17 S	WS: 13 G:18 SSW	WS: 12 G:17 SSW	WS: 11 G:16 SSW	WS: 12 G:18 SSW	WS: 12 G:18 SSW	WS: 8 G:13 SSW	WS: 7 G:12 SSW	WS: 7 G:12 SSW	WS: 8 G:13 SSW	WS: 8 G:13 SSW	WS: 8 G:13 SSW	WS: 9 G:13 SSW	WS: 9 G:13 SSW	WS: 11 G:14 SSE	WS: 12 G:15 SSE	WS: 13 G:16 SSE	WS: 13 G:17 SSE	WS: 13 G:18 SSE	WS: 13 G:18 SSE	WS: 12 G:17 S	WS: 11 G:16 S	WS: 10 G:15 S	WS: 9 G:14 S	WS: 9 G:14 S			
Houston Pilots F - 63/64	WS: 15 G:16 SSE	WS: 19 G:19 SSE	WS: 19 G:20 SSE	WS: 16 G:18 SSE	WS: 16 G:17 SSE	WS: 16 G:18 SSE	WS: 14 G:15 S	WS: 13 G:15 S	WS: 13 G:16 S	WS: 14 G:17 S	WS: 14 G:18 SSW	WS: 13 G:17 SSW	WS: 13 G:16 SSW	WS: 12 G:15 SSW	WS: 13 G:16 SSW	WS: 13 G:16 SSW	WS: 9 G:14 SSW	WS: 8 G:13 SSW	WS: 8 G:13 SSW	WS: 8 G:13 SSW	WS: 8 G:13 SSW	WS: 8 G:13 SSW	WS: 10 G:13 SSW	WS: 10 G:13 SSW	WS: 11 G:14 SSE	WS: 12 G:15 SSE	WS: 13 G:16 SSE	WS: 13 G:17 SSE	WS: 13 G:18 SSE	WS: 13 G:18 SSE	WS: 13 G:18 SSE	WS: 13 G:18 SSE	WS: 12 G:17 S	WS: 11 G:16 S	WS: 10 G:15 S	WS: 10 G:15 S		
Houston Pilots E - 51/52	WS: 15 G:16 S	WS: 16 G:18 SSE	WS: 17 G:19 SSE	WS: 16 G:17 SSE	WS: 15 G:16 SSE	WS: 15 G:17 SSE	WS: 15 G:17 S	WS: 14 G:15 S	WS: 14 G:15 S	WS: 13 G:15 S	WS: 14 G:17 S	WS: 14 G:18 SSW	WS: 14 G:17 S	WS: 12 G:15 S	WS: 15 G:18 SSW	WS: 11 G:16 S	WS: 10 G:15 SSW	WS: 9 G:13 SSW	WS: 9 G:13 SSW	WS: 9 G:13 SSW	WS: 9 G:13 SSW	WS: 9 G:13 SSW	WS: 10 G:13 SSW	WS: 10 G:13 SSW	WS: 11 G:14 SSE	WS: 12 G:15 SSE	WS: 13 G:16 SSE	WS: 13 G:17 SSE	WS: 13 G:18 SSE	WS: 13 G:18 SSE	WS: 13 G:18 SSE	WS: 13 G:18 SSE	WS: 12 G:17 S	WS: 12 G:16 S	WS: 12 G:16 S	WS: 11 G:15 S	WS: 11 G:15 S	
Houston Pilots D - 37/38	WS: 14 G:15 S	WS: 17 G:16 S	WS: 15 G:15 S	WS: 15 G:16 SSE	WS: 15 G:16 SSE	WS: 14 G:15 S	WS: 14 G:15 S	WS: 14 G:15 S	WS: 13 G:15 S	WS: 12 G:16 S	WS: 14 G:16 S	WS: 14 G:16 S	WS: 14 G:17 S	WS: 11 G:15 SSW	WS: 15 G:18 SSW	WS: 12 G:16 S	WS: 11 G:15 S	WS: 10 G:14 S	WS: 10 G:14 S	WS: 10 G:13 SSW	WS: 10 G:13 SSW	WS: 9 G:13 SSW	WS: 10 G:13 SSW	WS: 10 G:13 SSW	WS: 11 G:14 SSE	WS: 12 G:15 SSE	WS: 13 G:16 SSE	WS: 13 G:17 SSE	WS: 13 G:18 SSE	WS: 13 G:18 SSE	WS: 13 G:18 SSE	WS: 13 G:18 SSE	WS: 13 G:18 SSE	WS: 13 G:18 SSE	WS: 12 G:17 S	WS: 12 G:16 S	WS: 12 G:16 S	WS: 12 G:16 S
Houston Pilots C - 25/26	WS: 13 G:14 S	WS: 14 G:16 S	WS: 14 G:16 S	WS: 14 G:15 S	WS: 14 G:15 S	WS: 13 G:14 S	WS: 12 G:15 S	WS: 12 G:15 S	WS: 11 G:15 S	WS: 11 G:15 S	WS: 11 G:18 S	WS: 12 G:17 S	WS: 10 G:15 S	WS: 13 G:18 SSW	WS: 11 G:16 S	WS: 11 G:15 S	WS: 10 G:14 S	WS: 10 G:13 SSW	WS: 10 G:13 SSW	WS: 10 G:13 SSW	WS: 10 G:13 SSW	WS: 10 G:13 SSW	WS: 10 G:13 SSW	WS: 11 G:14 SSE	WS: 11 G:14 SSE	WS: 12 G:15 SSE	WS: 13 G:16 SSE	WS: 13 G:17 SSE	WS: 13 G:18 SSE	WS: 13 G:18 SSE	WS: 13 G:18 SSE	WS: 12 G:17 S	WS: 12 G:16 S	WS: 12 G:16 S	WS: 11 G:15 S	WS: 11 G:15 S	WS: 11 G:15 S	
Houston Pilots B - 11/12	WS: 12 G:13 S	WS: 14 G:15 S	WS: 14 G:15 S	WS: 13 G:15 S	WS: 13 G:15 S	WS: 14 G:16 S	WS: 12 G:14 S	WS: 13 G:15 S	WS: 12 G:15 S	WS: 11 G:15 S	WS: 12 G:16 S	WS: 15 G:19 S	WS: 13 G:17 S	WS: 12 G:16 S	WS: 14 G:18 SSW	WS: 12 G:16 S	WS: 11 G:15 S	WS: 11 G:14 S	WS: 10 G:14 SSW	WS: 10 G:14 SSW	WS: 10 G:14 SSW	WS: 10 G:14 SSW	WS: 10 G:14 SSW	WS: 10 G:14 S	WS: 11 G:14 S	WS: 11 G:14 S	WS: 12 G:15 SSE	WS: 12 G:16 SSE	WS: 13 G:17 SSE	WS: 13 G:18 SSE	WS: 13 G:18 SSE	WS: 12 G:17 S	WS: 12 G:16 S	WS: 12 G:16 S	WS: 12 G:16 S	WS: 12 G:16 S	WS: 12 G:16 S	
Houston Pilots A - 1 & 2 Bravo	WS: 11 G:12 S	WS: 13 G:14 S	WS: 14 G:15 S	WS: 15 G:16 S	WS: 14 G:15 S	WS: 15 G:16 S	WS: 12 G:13 S	WS: 15 G:16 S	WS: 15 G:16 S	WS: 15 G:16 S	WS: 16 G:17 S	WS: 17 G:18 S	WS: 16 G:18 S	WS: 15 G:18 SSW	WS: 18 G:19 SSW	WS: 14 G:16 S	WS: 13 G:16 S	WS: 12 G:15 S	WS: 12 G:15 S	WS: 12 G:15 S	WS: 12 G:15 S	WS: 12 G:15 S	WS: 12 G:15 S	WS: 11 G:14 S	WS: 11 G:14 S	WS: 12 G:15 SSE	WS: 12 G:16 SSE	WS: 13 G:17 SSE	WS: 13 G:18 SSE	WS: 13 G:18 SSE	WS: 13 G:18 SSE	WS: 14 G:19 S	WS: 14 G:19 S	WS: 13 G:18 S	WS: 13 G:18 S	WS: 13 G:18 S	WS: 13 G:18 S	

See slides below for official thoughts on winds.

Houston Pilots: Thu. 7/28/2022



Forecast Discussion

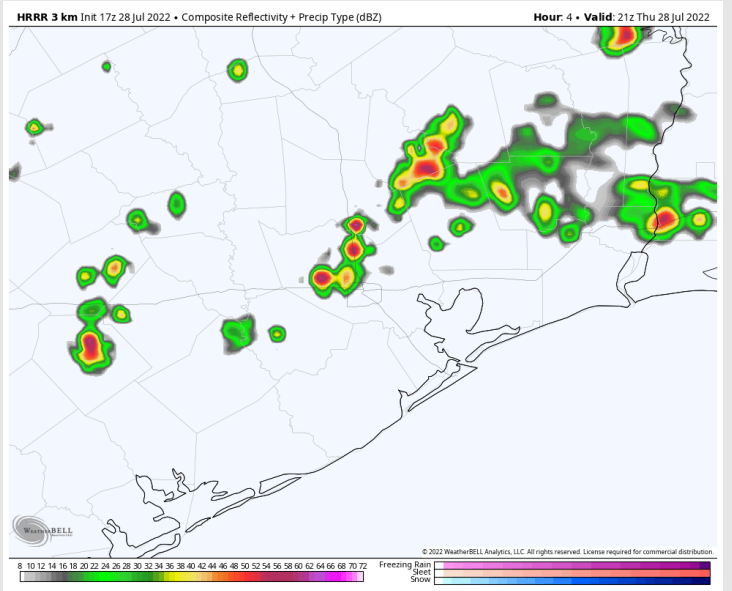
Precip: Lower end chances for isolated showers/ t-storms looks possible for most of the PM (~30%) bringing moderate rain and a few lightning strikes under any cell. Expecting these showers/storms to be quite hit and miss (similar to the past few days) and closer in proximity to the northern stations .

Wind: Winds 10-15 MPH sustained for the rest of the PM hours with a few gusts to 20 MPH possible. Winds remain out of the S/SSE.

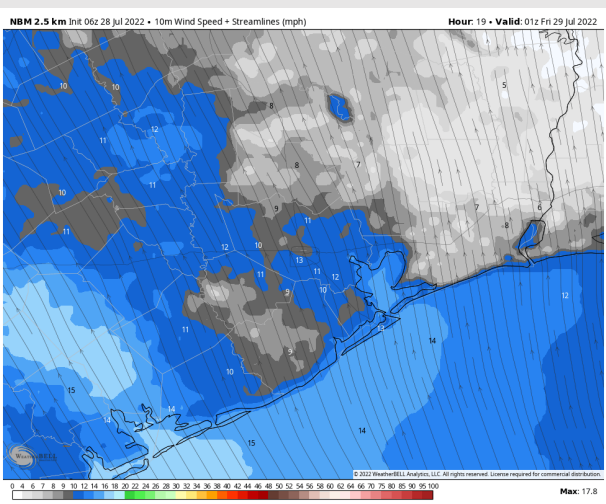
Temps: Low temps Friday AM expected to be in the upper 70s F to mid 80s F closer to boarding station.

Visibility: No fog conditions anticipated at this time.

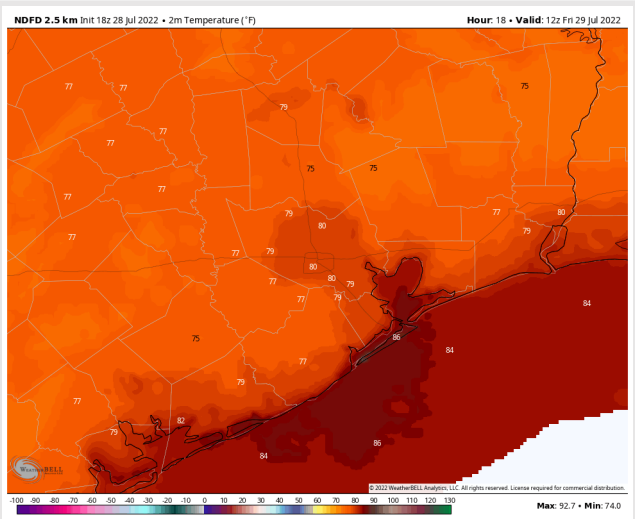
Precip Forecast: 4 PM CT



Wind Speed
8 PM CT



Low Temps
FRI AM



Houston Pilots: Fri. 7/29/2022



Forecast Discussion

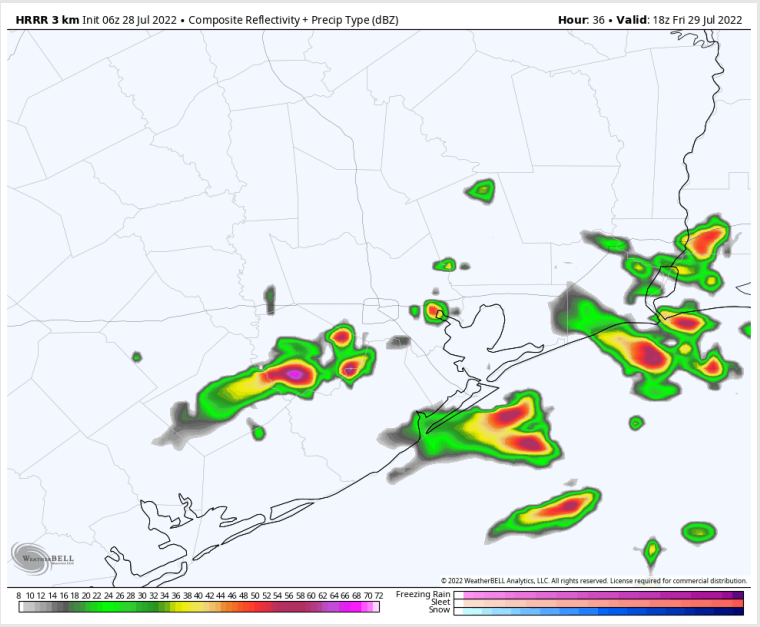
Precip: Isolated chances for a few showers look to be possible in the morning hours ~20%. Expecting chances for showers/thunderstorms to increase to 40-50% after 1PM until 7PM. After 7PM, expecting chances to decrease to 10% until 9PM. Drier conditions anticipated for the overnight hours.

Wind: Sustained winds look to be 8-13 MPH out of the south for Friday AM with winds north of Morgan's Point lighter at 3-8 MPH. Winds slowly increase to 10-15 MPH out of the SSE after midday for the rest of the day. A few gusts to 20 MPH looks possible.

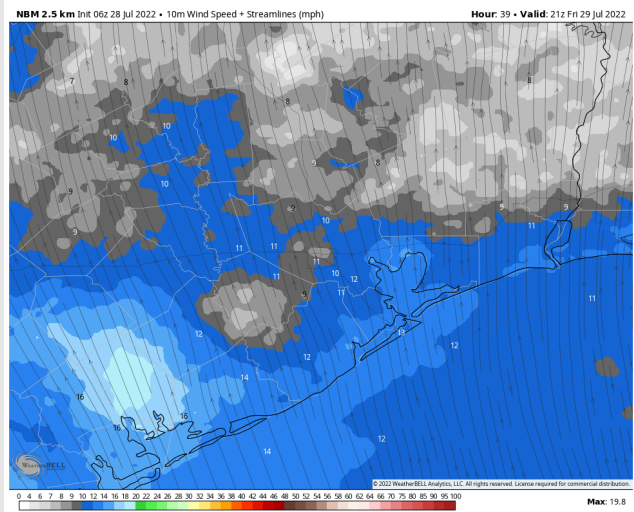
Temps: High Temps look to once again reach the low to mid 90s F. Boarding station in the mid 80s F.

Visibility: Not anticipating any fog concerns at this time.

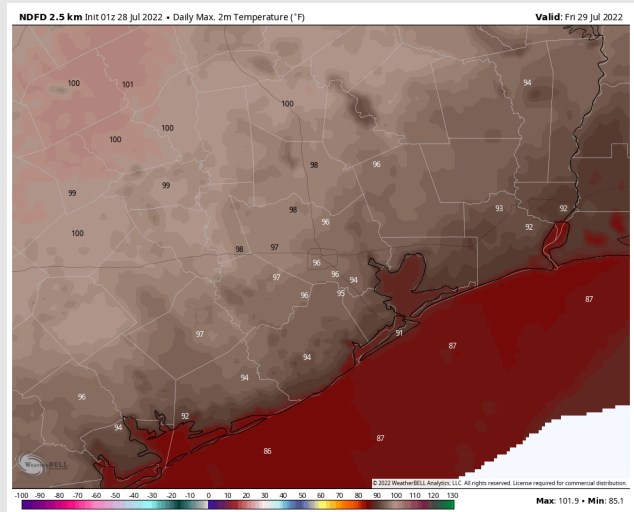
Precip Forecast: 1 PM CT



Wind Speed
4 PM CT



High Temps
Friday



Houston Pilots: Sat. 7/30/2022

Forecast Discussion

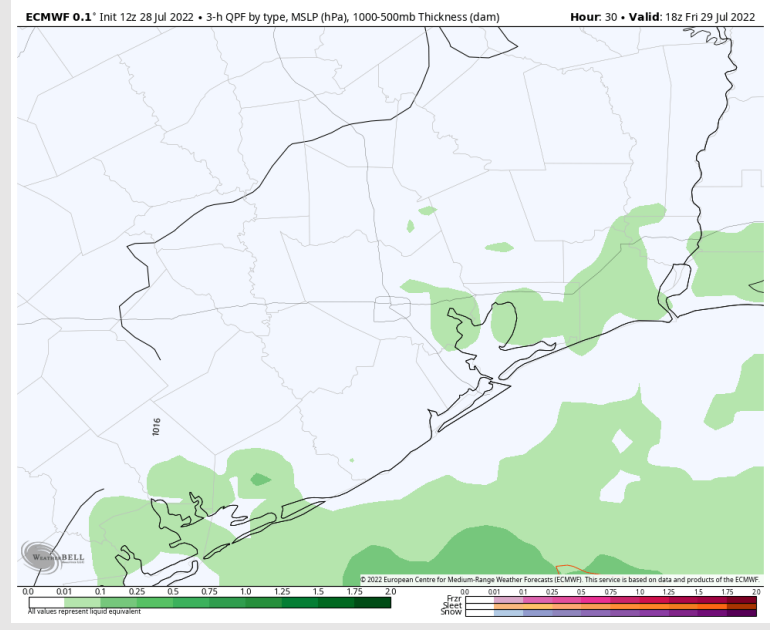
Precip: Isolated chances (~30%) for hit and miss showers/ thunderstorms will be possible from the early AM out through mid-PM before chances wind down. Favoring drier conditions into the overnight

Wind: Winds out of the south 10-15 MPH in the AM, then calming to 5-10 MPH and veering from the SE midday. Winds then pick back up in the early PM to 8-13 MPH and will continue into the rest of the night.

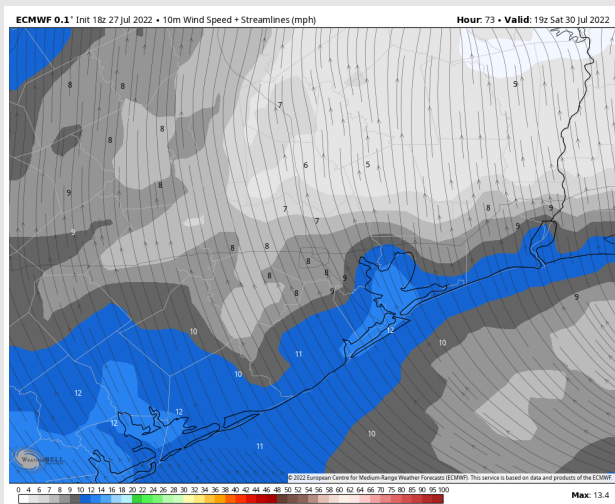
Temps: Highs Saturday read the upper 80s F near the boarding station and mid 90s F for all other stations.

Visibility: Not anticipating any fog concerns at this time.

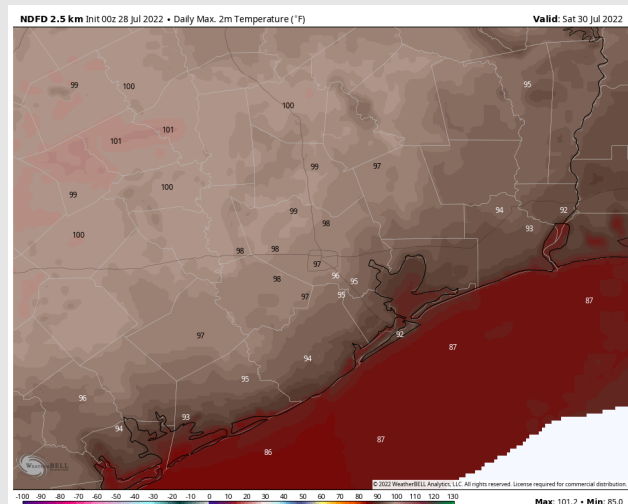
Precip Forecast: 1 PM CT



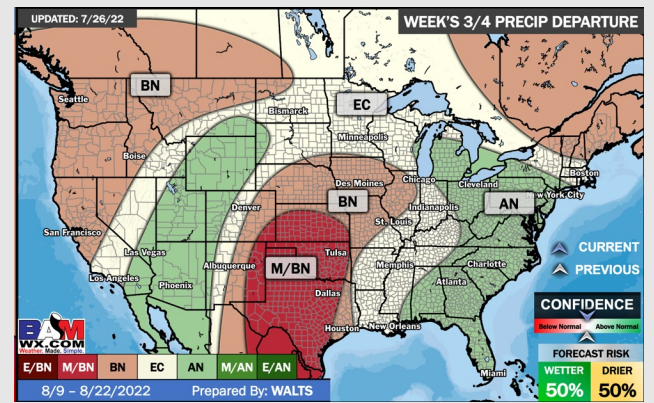
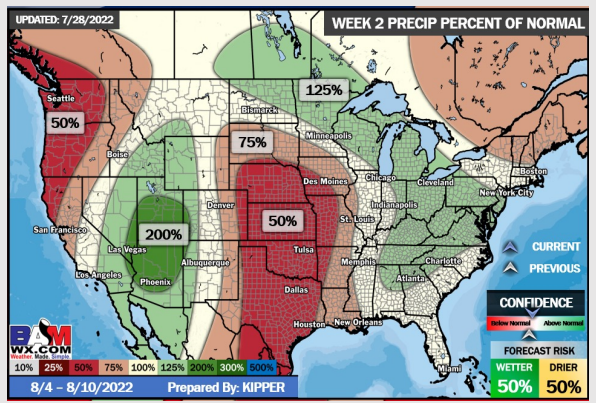
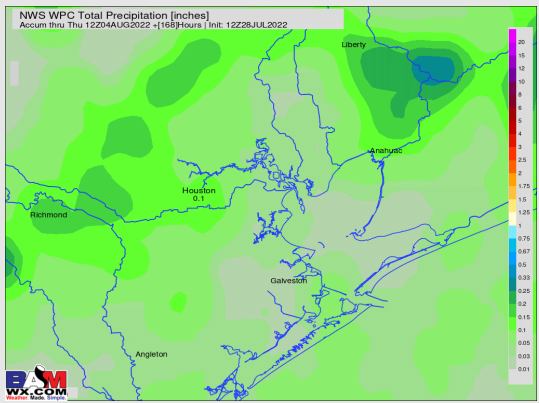
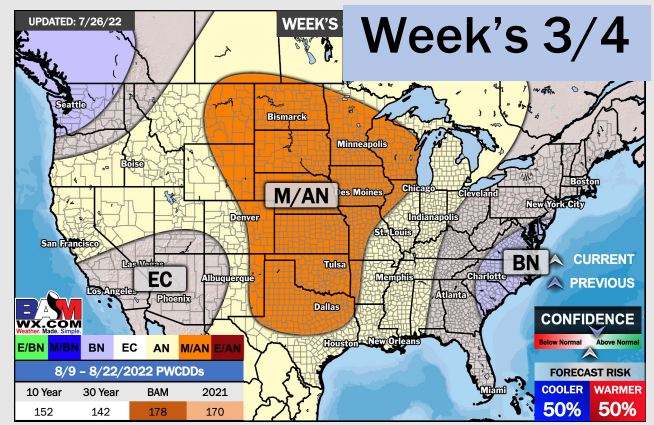
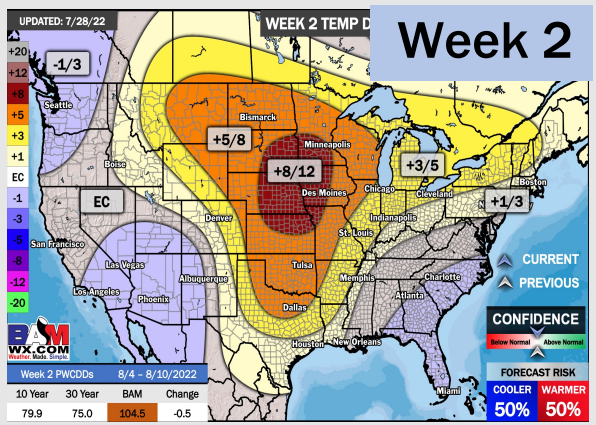
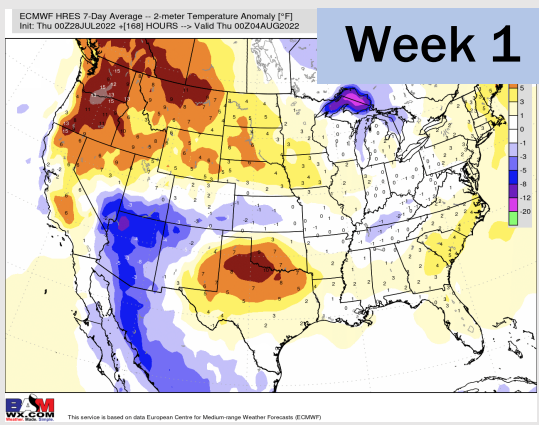
Wind Speed
2 PM CT



High Temps
Saturday



Houston Pilots: 7/28/22



- Another week with above normal temperatures. Daily, scattered chances for precipitation will be possible over the next few days, but not widespread heavy threats at this time.
- Week 2 likely features above normal risks for temperatures and below normal precipitation risks.
- The weeks 3/4 timeframe into the first couple weeks of August looks to feature above normal temperatures and below normal risks for precip.