

# Houston Pilots Forecast Package

Houston Pilots

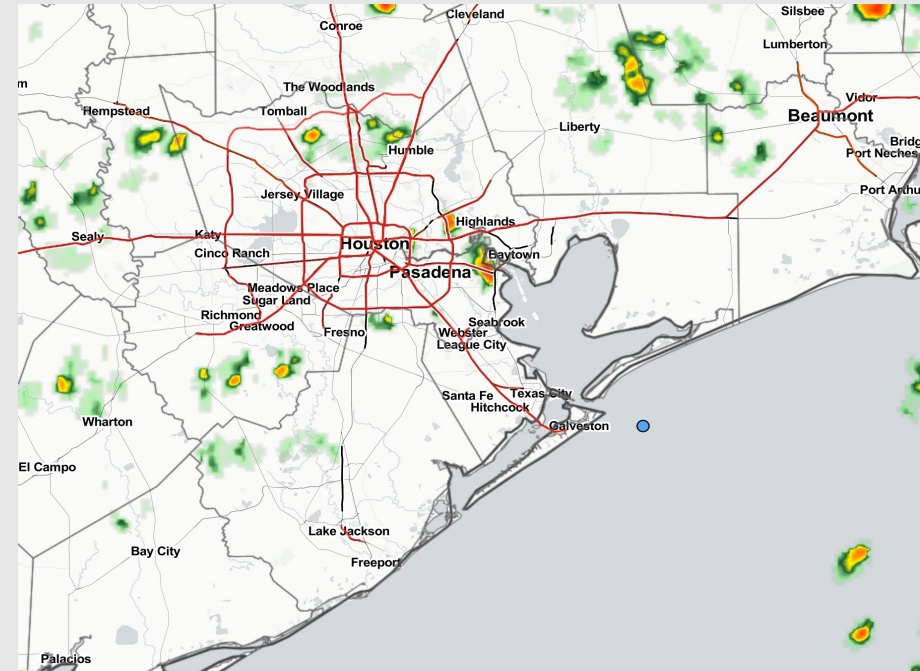
Updated: 3:00 PM CT

Wednesday, July 27, 2022

Forecaster: Alyssa McClung

## Weather Headlines

- A few minor chances for precipitation the next few days (theme stays isolated / hit and miss) – nothing significant in terms of high precip chances with more dry time than not.
- Flow will stay predominately out of the S/SSE over the next few days.
- Not favoring any tropical threats the next 7 days.
- Above average temperatures look to continue into August.

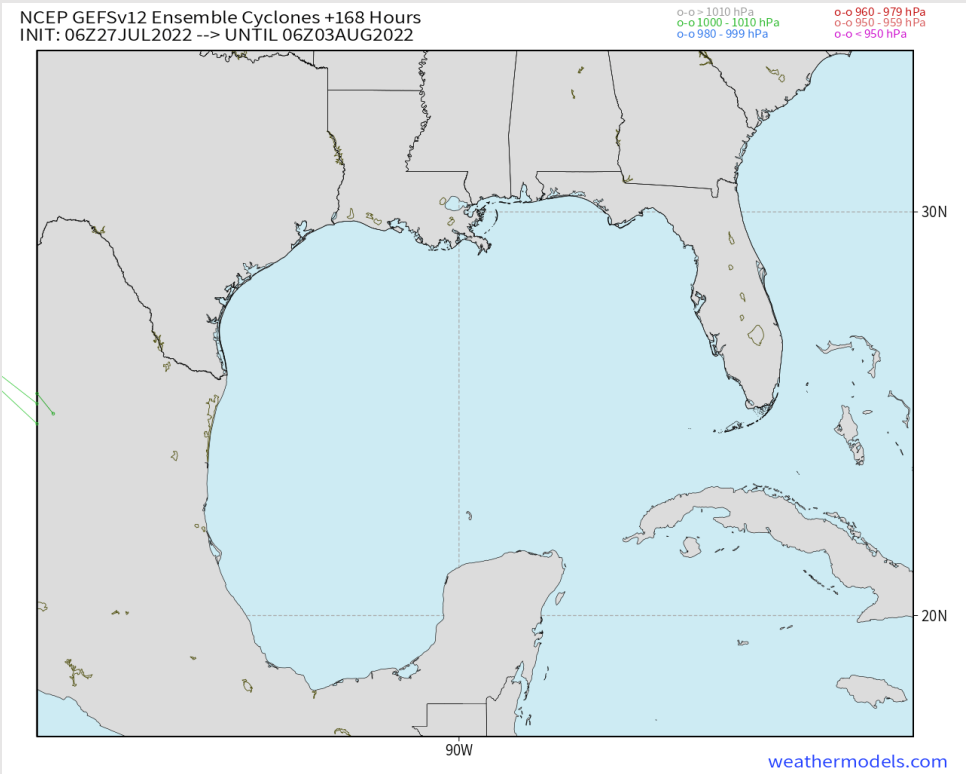


**Radar/ NWS Alerts: 3:00 PM CT**



As always, please do not hesitate to reach out to us with any forecast questions via the chat option on the Weather Porthole or our on-call number, **(317)-560-8122** press 1 for forecast questions.

## Various model tracks next 7 days



Not favoring any tropical threats the next 7 days.

**Confidence**

Above Normal  Below Normal

# Houston Pilots Visibility Report



Time	07-27-2022 Wed 12pm	07-27-2022 Wed 1pm	07-27-2022 Wed 2pm	07-27-2022 Wed 3pm	07-27-2022 Wed 4pm	07-27-2022 Wed 5pm	07-27-2022 Wed 6pm	07-27-2022 Wed 7pm	07-27-2022 Wed 8pm	07-27-2022 Wed 9pm	07-27-2022 Wed 10pm	07-27-2022 Wed 11pm	07-28-2022 Thu 12am	07-28-2022 Thu 1am	07-28-2022 Thu 2am	07-28-2022 Thu 3am	07-28-2022 Thu 4am	07-28-2022 Thu 5am	07-28-2022 Thu 6am	07-28-2022 Thu 7am	07-28-2022 Thu 8am	07-28-2022 Thu 9am	07-28-2022 Thu 10am	07-28-2022 Thu 11am	07-28-2022 Thu 12pm	07-28-2022 Thu 1pm	07-28-2022 Thu 2pm	07-28-2022 Thu 3pm	07-28-2022 Thu 4pm	07-28-2022 Thu 5pm						
Houston Pilots N - 610 Bridge	10.000	10.000	10.000	10.000	10.000	10.000	10.000	10.000	10.000	10.000	10.000	10.000	10.000	10.000	10.000	10.000	10.000	10.000	10.000	10.000	10.000	10.000	10.000	10.000	10.000	10.000	10.000	10.000	10.000	10.000	10.000	10.000	10.000			
Houston Pilots M - Kinder 1	10.000	10.000	10.000	10.000	10.000	10.000	10.000	10.000	10.000	10.000	10.000	10.000	10.000	10.000	10.000	10.000	10.000	10.000	10.000	10.000	10.000	10.000	10.000	10.000	10.000	10.000	10.000	10.000	10.000	10.000	10.000	10.000	10.000	10.000	10.000	
Houston Pilots L - Greens Bayou	10.000	10.000	10.000	10.000	10.000	10.000	10.000	10.000	10.000	10.000	10.000	10.000	10.000	10.000	10.000	10.000	10.000	10.000	10.000	10.000	10.000	10.000	10.000	10.000	10.000	10.000	10.000	10.000	10.000	10.000	10.000	10.000	10.000	10.000	10.000	
Houston Pilots K - Shell Crude	10.000	10.000	10.000	10.000	10.000	10.000	10.000	10.000	10.000	10.000	10.000	10.000	10.000	10.000	10.000	10.000	10.000	10.000	10.000	10.000	10.000	10.000	10.000	10.000	10.000	10.000	10.000	10.000	10.000	10.000	10.000	10.000	10.000	10.000	10.000	
Houston Pilots J - Lynchburg Ferries	10.000	10.000	10.000	10.000	10.000	10.000	10.000	10.000	10.000	10.000	10.000	10.000	10.000	10.000	10.000	10.000	10.000	10.000	10.000	10.000	10.000	10.000	10.000	10.000	10.000	10.000	10.000	10.000	10.000	10.000	10.000	10.000	10.000	10.000	10.000	
Houston Pilots I - Exxon 3	10.000	10.000	10.000	10.000	10.000	10.000	10.000	10.000	10.000	10.000	10.000	10.000	10.000	10.000	10.000	10.000	10.000	10.000	10.000	10.000	10.000	10.000	10.000	10.000	10.000	10.000	10.000	10.000	10.000	10.000	10.000	10.000	10.000	10.000	10.000	
Houston Pilots H - Morgans Point	10.000	10.000	10.000	10.000	10.000	10.000	10.000	10.000	10.000	10.000	10.000	10.000	10.000	10.000	10.000	10.000	10.000	10.000	10.000	10.000	10.000	10.000	10.000	10.000	10.000	10.000	10.000	10.000	10.000	10.000	10.000	10.000	10.000	10.000	10.000	
Houston Pilots G - 75/76	10.000	10.000	10.000	10.000	10.000	10.000	10.000	10.000	10.000	10.000	10.000	10.000	10.000	10.000	10.000	10.000	10.000	10.000	10.000	10.000	10.000	10.000	10.000	10.000	10.000	10.000	10.000	10.000	10.000	10.000	10.000	10.000	10.000	10.000	10.000	
Houston Pilots F - 63/64	10.000	10.000	10.000	10.000	10.000	10.000	10.000	10.000	10.000	10.000	10.000	10.000	10.000	10.000	10.000	10.000	10.000	10.000	10.000	10.000	10.000	10.000	10.000	10.000	10.000	10.000	10.000	10.000	10.000	10.000	10.000	10.000	10.000	10.000	10.000	
Houston Pilots E - 51/52	10.000	10.000	10.000	10.000	10.000	10.000	10.000	10.000	10.000	10.000	10.000	10.000	10.000	10.000	10.000	10.000	10.000	10.000	10.000	10.000	10.000	10.000	10.000	10.000	10.000	10.000	10.000	10.000	10.000	10.000	10.000	10.000	10.000	10.000	10.000	10.000
Houston Pilots D - 37/38	10.000	10.000	10.000	10.000	10.000	10.000	10.000	10.000	10.000	10.000	10.000	10.000	10.000	10.000	10.000	10.000	10.000	10.000	10.000	10.000	10.000	10.000	10.000	10.000	10.000	10.000	10.000	10.000	10.000	10.000	10.000	10.000	10.000	10.000	10.000	10.000
Houston Pilots C - 25/26	10.000	10.000	10.000	10.000	10.000	10.000	10.000	10.000	10.000	10.000	10.000	10.000	10.000	10.000	10.000	10.000	10.000	10.000	10.000	10.000	10.000	10.000	10.000	10.000	10.000	10.000	10.000	10.000	10.000	10.000	10.000	10.000	10.000	10.000	10.000	10.000
Houston Pilots B - 11/12	10.000	10.000	10.000	10.000	10.000	10.000	10.000	10.000	10.000	10.000	10.000	10.000	10.000	10.000	10.000	10.000	10.000	10.000	10.000	10.000	10.000	10.000	10.000	10.000	10.000	10.000	10.000	10.000	10.000	10.000	10.000	10.000	10.000	10.000	10.000	10.000
Houston Pilots A - 1 & 2 Bravo	10.000	10.000	10.000	10.000	10.000	10.000	10.000	10.000	10.000	10.000	10.000	10.000	10.000	10.000	10.000	10.000	10.000	10.000	10.000	10.000	10.000	10.000	10.000	10.000	10.000	10.000	10.000	10.000	10.000	10.000	10.000	10.000	10.000	10.000	10.000	10.000

https://weatherporthole.com/pilots.php  
weatherporthole.com



## Forecast Discussion

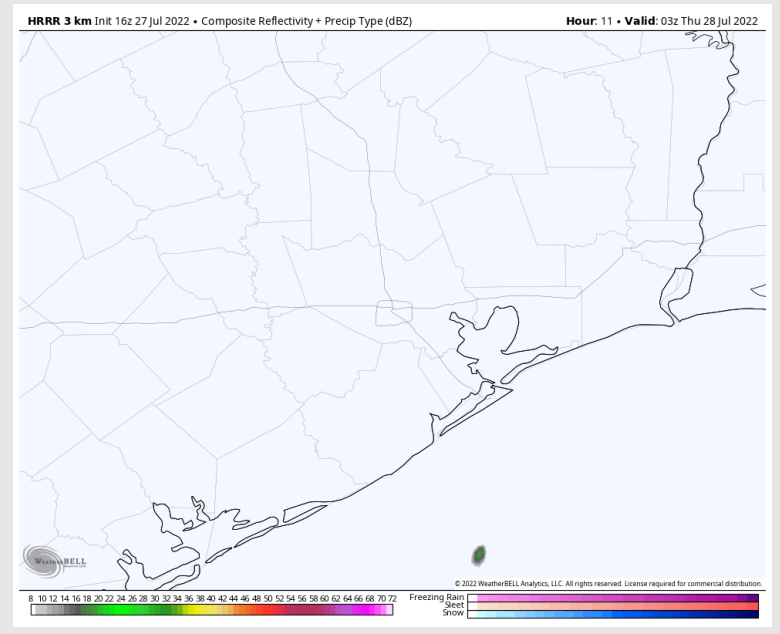
**Precip:** Isolated to spotty showers look to be possible until ~8PM. Chances will be slightly higher than previous days (~20 - 30%), but still anticipating more dry time than not. Any cell could be a quick pulse of moderate rain and could contain a couple lightning strikes. Expecting drier conditions into the overnight.

**Wind:** Winds much of the day are favored 10-15 MPH sustained at the boarding station from the south (gusting to 15-20 MPH). There may be a window from 2-5 PM of sustained winds 13-18 MPH at the boarding station. Winds north of Morgan's Point 5-10 MPH.

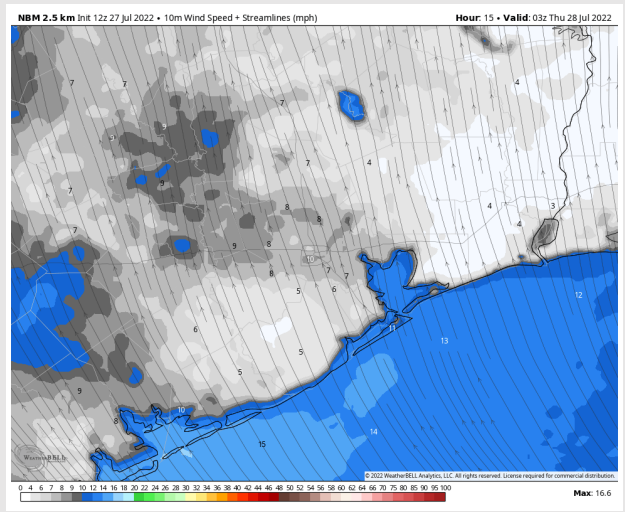
**Temps:** Low temps dropping to the upper 70s F to mid 80s F closer to the boarding station.

**Visibility:** Not anticipating any fog concerns at this time.

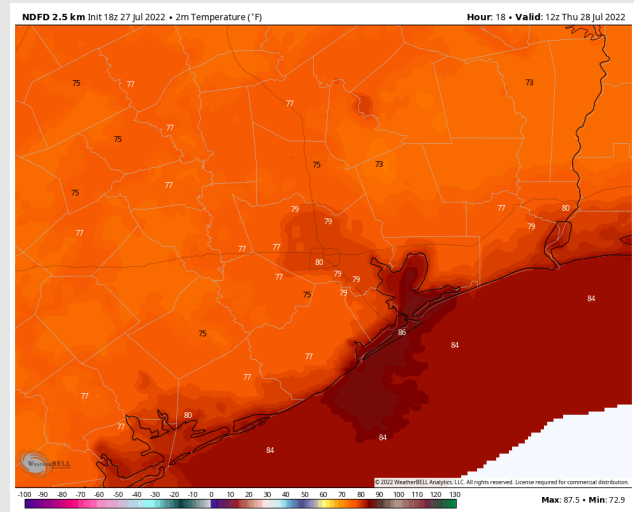
## Precip Forecast: 10 PM CT



Wind Speed  
10 PM CT



Low Temps  
THU AM



# Houston Pilots: Thu. 7/28/2022



## Forecast Discussion

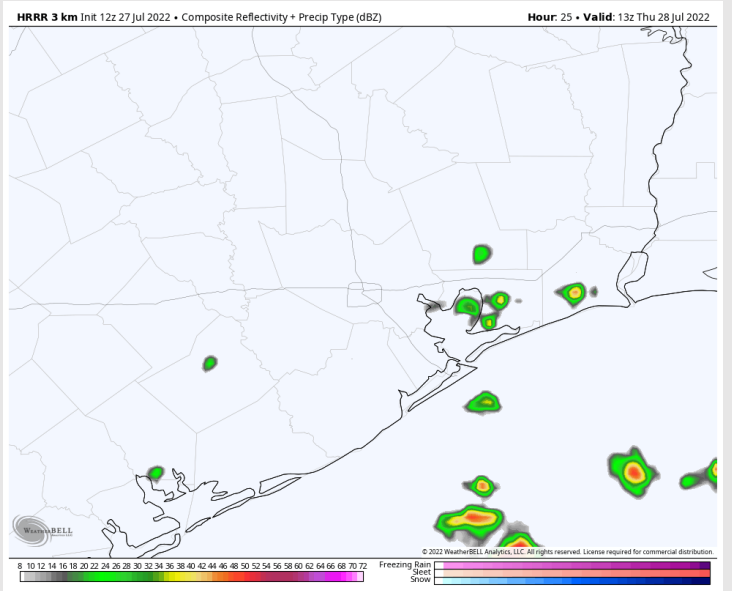
**Precip:** Lower end chances for isolated showers/ t-storms looks possible for most of the day Thursday (~30%) bringing moderate rain and a few lightning strikes. Expecting these showers/storms to be hit and miss. Chances decrease later into the evening.

**Wind:** Winds look to continue 5-10 MPH sustained for Thursday AM, and increase closer to 10-15 MPH sustained for the PM hours with a few gusts to 20 MPH possible. Winds remain out of the S/SSE.

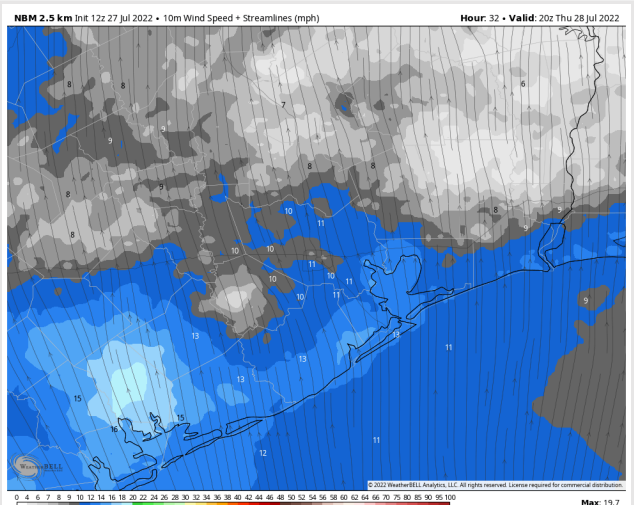
**Temps:** Highs likely reach the low 90s F for most stations, with warmer temps closer to the Hou metro area. Boarding station in the mid 80s F.

**Visibility:** No fog conditions anticipated at this time.

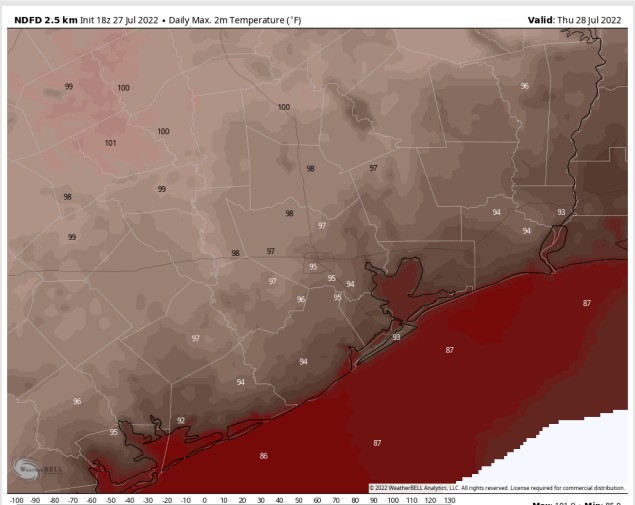
## Precip Forecast: 8 AM CT



Wind Speed  
3 PM CT



High Temps  
Thu



# Houston Pilots: Fri. 7/29/2022



## Forecast Discussion

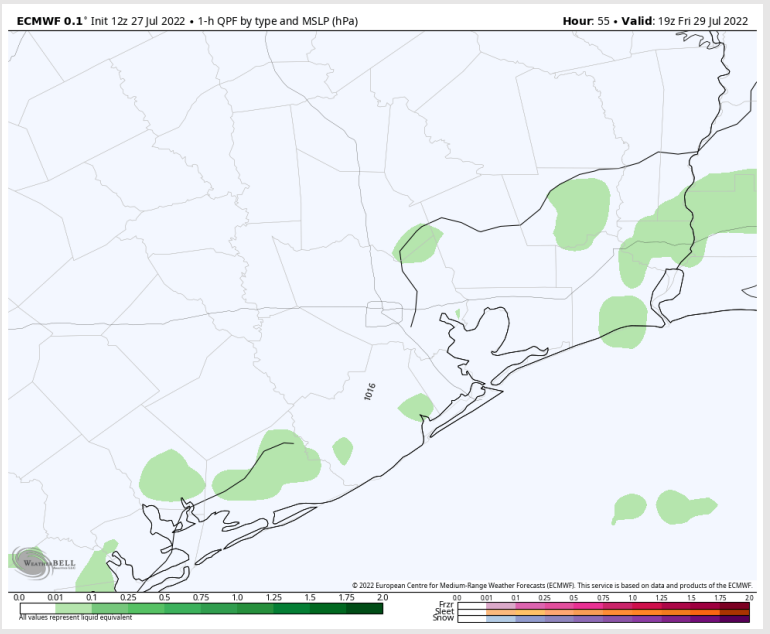
**Precip:** Scattered chances for a few showers look to be possible into the afternoon hours ~20%. Anticipating much more dry time than not for Friday.

**Wind:** Sustained winds look to be 5-10 MPH out of the south for Friday AM, and slowly increase to 10-15 MPH out of the SSE after midday for the rest of the day. A few gusts to 20 MPH looks possible.

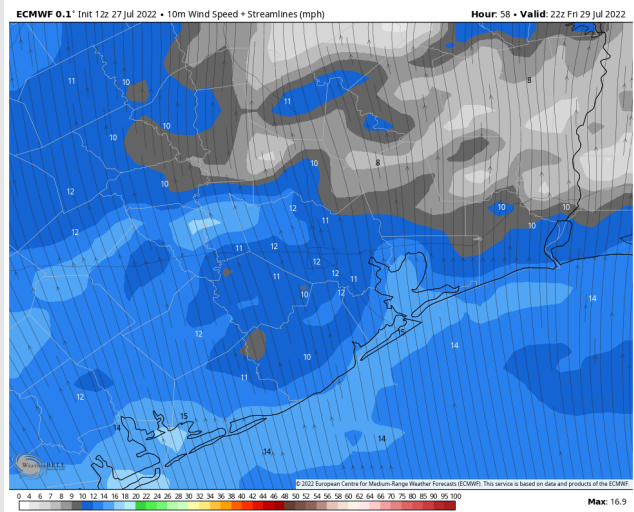
**Temps:** High Temps look to once again reach the low to mid 90s F. Boarding station in the mid 80s F.

**Visibility:** Not anticipating any fog concerns at this time.

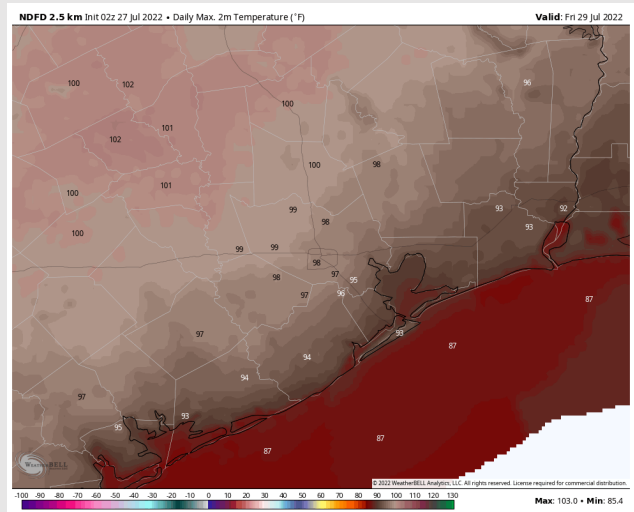
## Precip Forecast: 2 PM CT



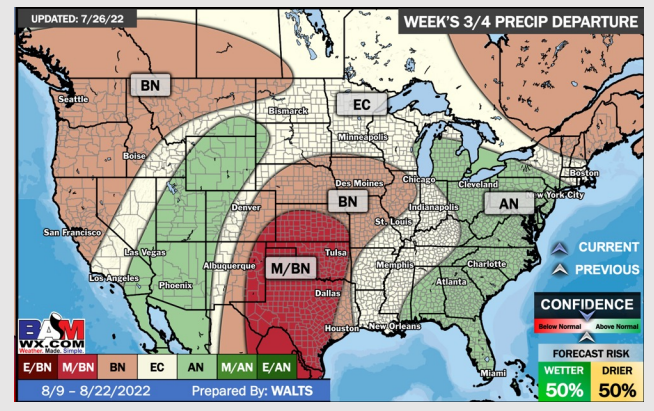
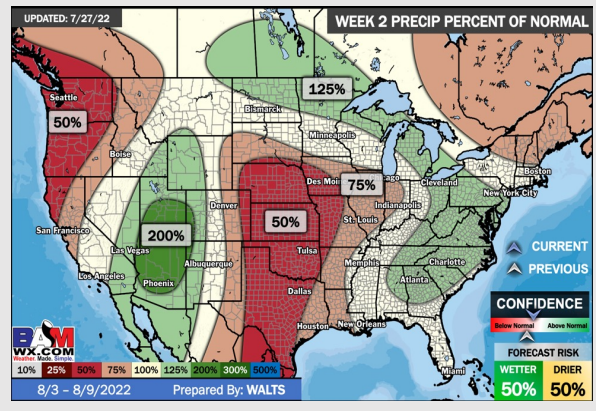
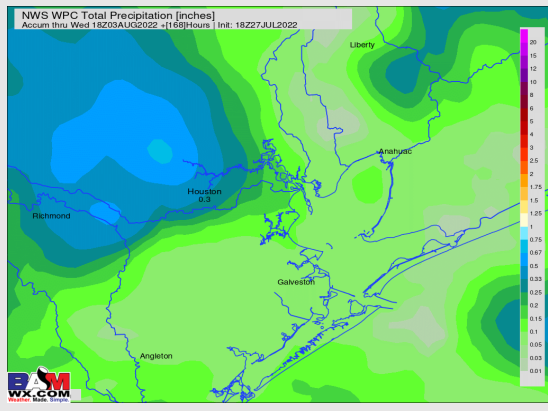
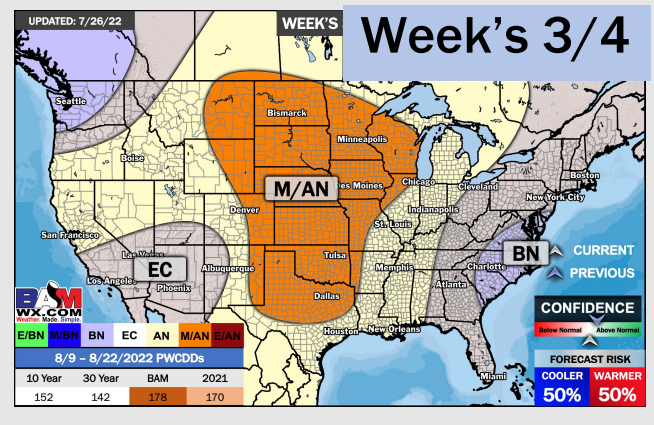
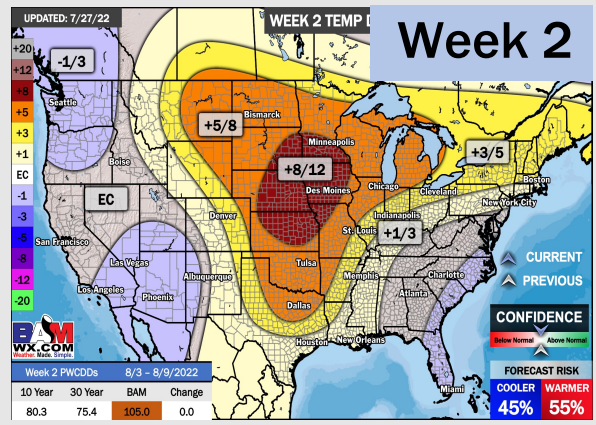
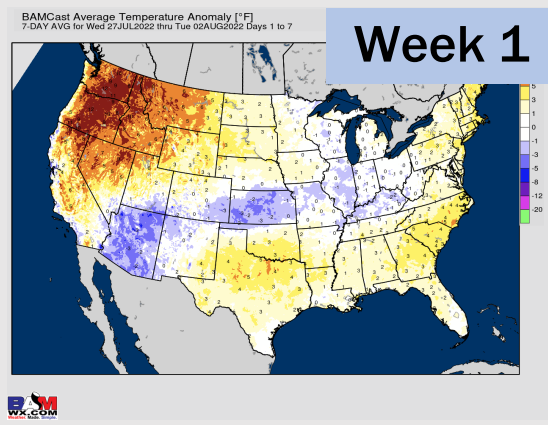
Wind Speed  
5 PM CT



High Temps  
Friday



# Houston Pilots: 7/27/22



- Another week with above normal temperatures. Daily, scattered chances for precip will be possible over the next few days, but not widespread heavy threats at this time.
- Week 2 likely features above normal risks for temperatures and below normal precipitation risks.
- The weeks 3/4 timeframe into the first couple weeks of August looks to feature above normal temperatures and below normal risks for precip.