

Houston Pilots Forecast Package

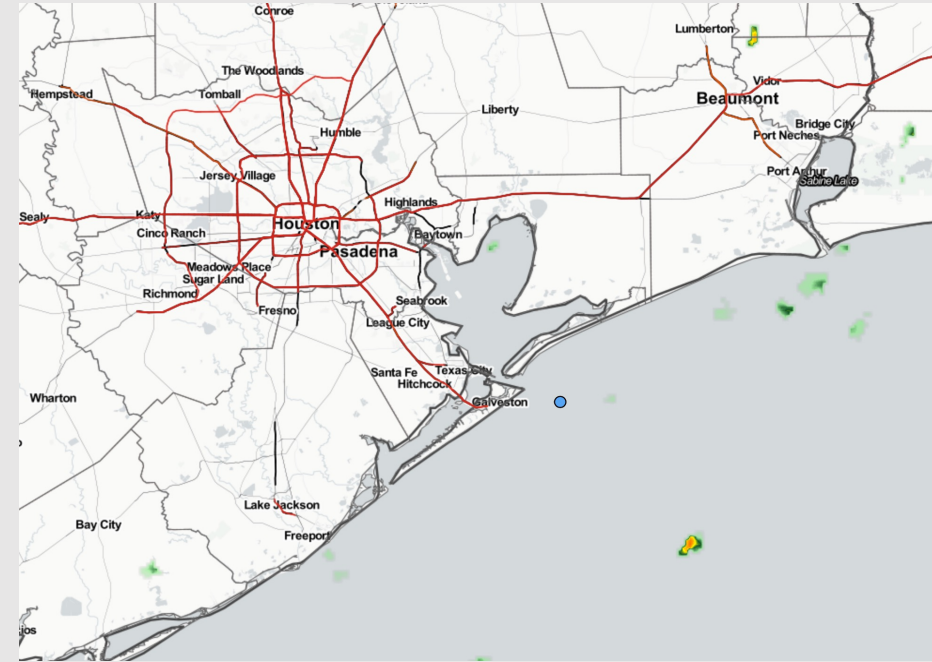
Houston Pilots

Updated: 5:00 AM CT
Tuesday, July 26, 2022

Forecaster: Vince Bryan

Weather Headlines

- A few minor chances for precipitation the next few days (theme stays isolated / hit and miss) – nothing significant in terms of high precip chances with more dry time than not.
- Flow will stay predominately out of the S/SSE over the next few days.
- Not favoring any tropical threats the next 7 days.
- Above average temperatures look to continue into August.



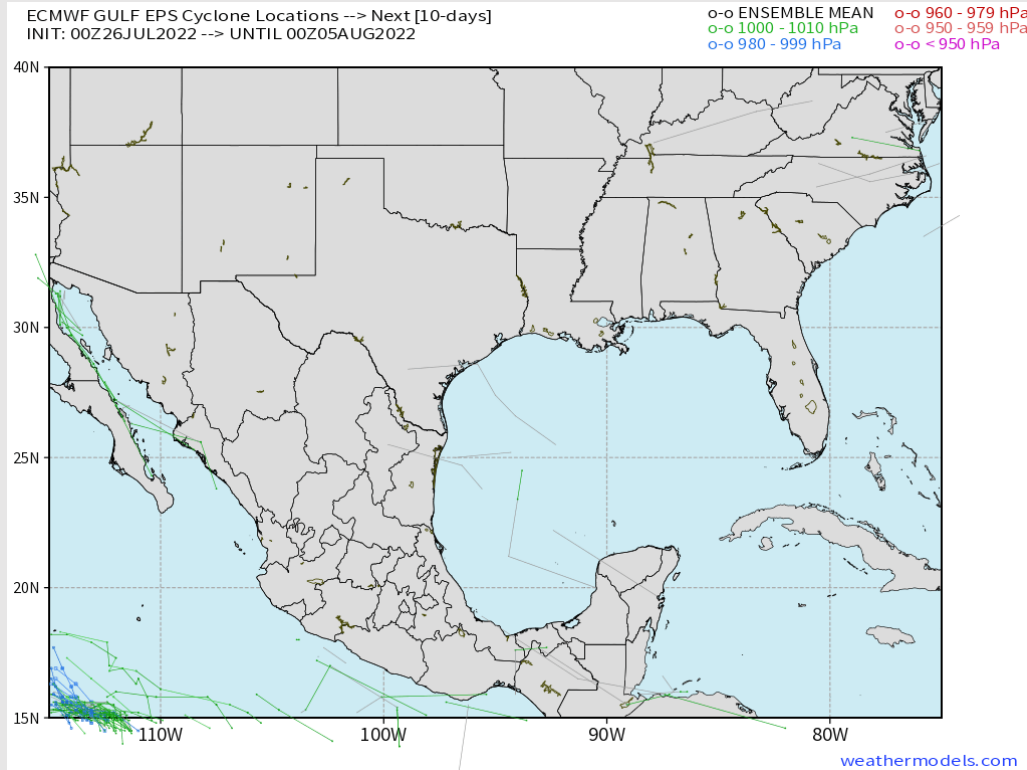
Radar/ NWS Alerts: 5:00 AM CT



As always, please do not hesitate to reach out to us with any forecast questions via the chat option on the Weather Porthole or our on-call number, **(317)-560-8122** press 1 for forecast questions.

Houston Pilots Extended Range Tropical Report

Various model tracks next 7 days



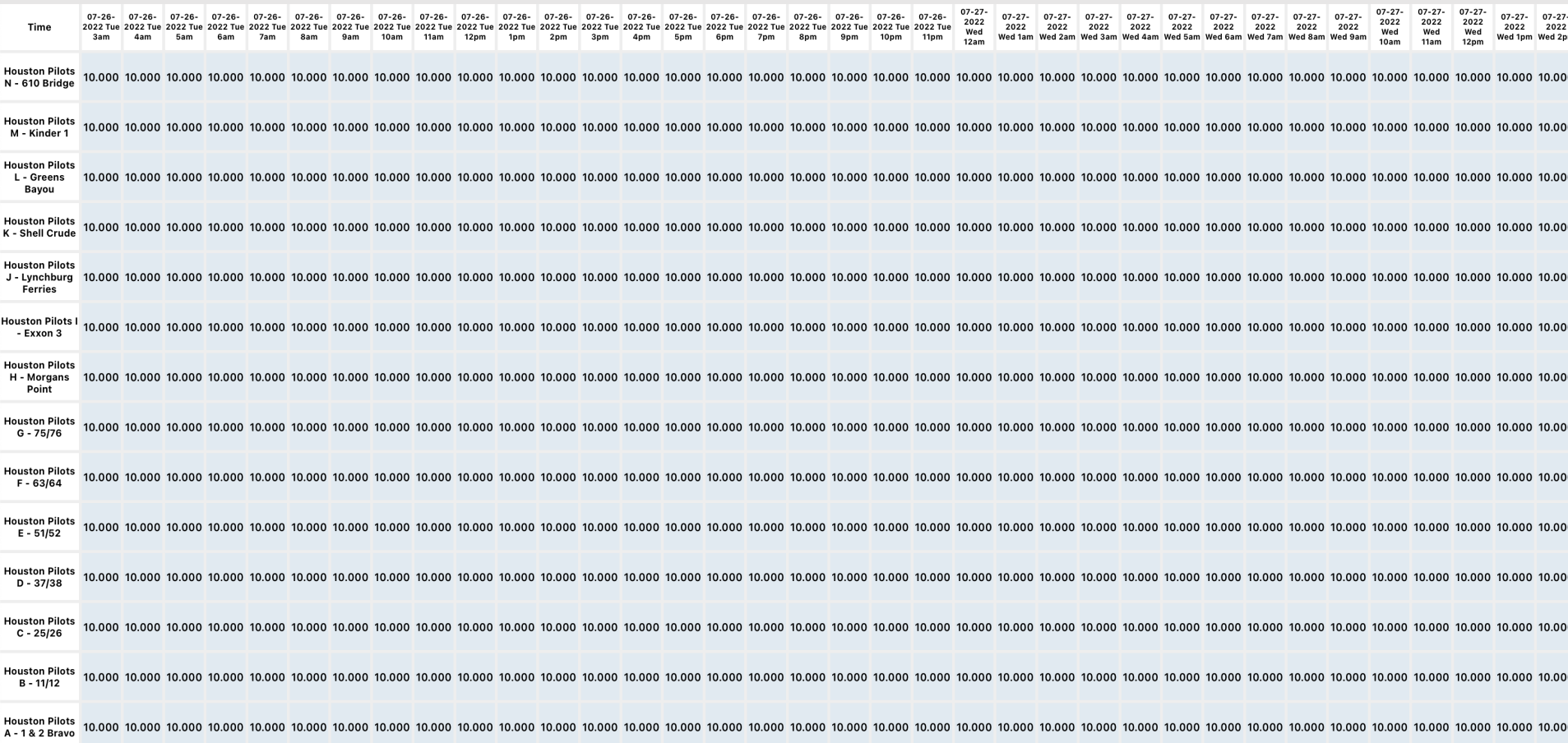
Not favoring any tropical threats the next 7 days.

Confidence

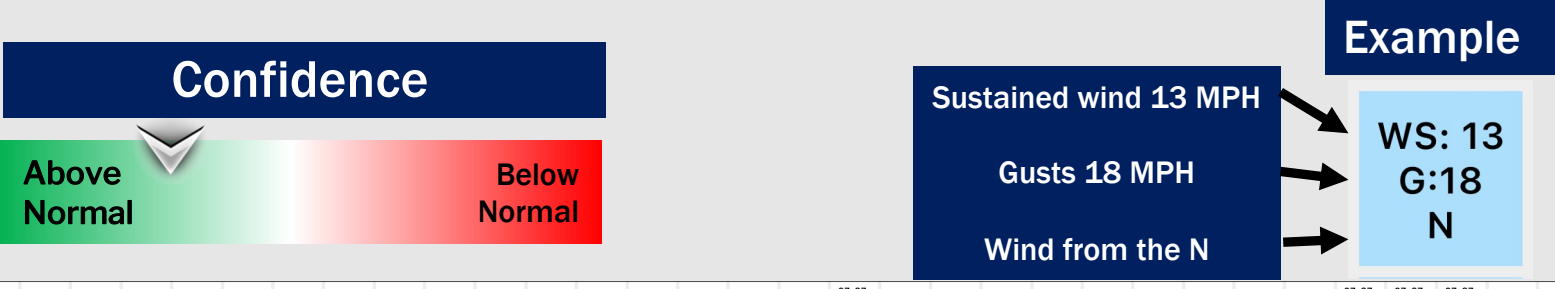
Above
Normal

Below
Normal

The image contains two logos. On the left is the logo for BAM WX.COM, featuring the letters 'BAM' in a stylized font where the 'A' is white with a black outline, set against a blue background. Below 'BAM' is 'WX.COM' in black, and at the bottom is the tagline 'Weather. Made. Simple.' in blue and red. On the right is the logo for Houston Pilots, featuring a large, stylized red 'H' with a black outline, and the text 'Houston Pilots' in a serif font to its left.



Houston Pilots Wind Report



Time	07-26-2022 Tue 3am	07-26-2022 Tue 4am	07-26-2022 Tue 5am	07-26-2022 Tue 6am	07-26-2022 Tue 7am	07-26-2022 Tue 8am	07-26-2022 Tue 9am	07-26-2022 Tue 10am	07-26-2022 Tue 11am	07-26-2022 Tue 12pm	07-26-2022 Tue 1pm	07-26-2022 Tue 2pm	07-26-2022 Tue 3pm	07-26-2022 Tue 4pm	07-26-2022 Tue 5pm	07-26-2022 Tue 6pm	07-26-2022 Tue 7pm	07-26-2022 Tue 8pm	07-26-2022 Tue 9pm	07-26-2022 Tue 10pm	07-26-2022 Tue 11pm	07-27-2022 Wed 12am	07-27-2022 Wed 1am	07-27-2022 Wed 2am	07-27-2022 Wed 3am	07-27-2022 Wed 4am	07-27-2022 Wed 5am	07-27-2022 Wed 6am	07-27-2022 Wed 7am	07-27-2022 Wed 8am	07-27-2022 Wed 9am	07-27-2022 Wed 10am	07-27-2022 Wed 11am	07-27-2022 Wed 12pm	07-27-2022 Wed 1pm	07-27-2022 Wed 2pm
Houston Pilots N - 610 Bridge	WS: 2 G:8 SSW	WS: 2 G:6 SSW	WS: 1 G:5 S	WS: 1 G:6 SSE	WS: 2 G:5 E	WS: 4 G:11 S	WS: 6 G:11 SSW	WS: 6 G:9 S	WS: 6 G:8 SSE	WS: 6 G:8 SSE	WS: 8 G:10 SE	WS: 10 G:12 SE	WS: 12 G:16 SE	WS: 12 G:16 SE	WS: 13 G:17 SSE	WS: 13 G:19 SSE	WS: 12 G:18 SSE	WS: 11 G:17 SSE	WS: 9 G:16 SSE	WS: 8 G:14 SSE	WS: 6 G:12 S	WS: 5 G:10 S	WS: 4 G:9 S	WS: 3 G:6 SSE	WS: 2 G:4 S	WS: 1 G:3 S	WS: 1 G:3 SSE	WS: 1 G:2 SSE	WS: 1 G:2 SSE	WS: 3 G:5 SSE	WS: 6 G:8 S	WS: 7 G:9 S	WS: 7 G:11 SSE	WS: 8 G:12 SSE	WS: 10 G:15 SSE	WS: 10 G:16 SSE
Houston Pilots M - Kinder 1	WS: 2 G:8 SSW	WS: 2 G:7 SSW	WS: 1 G:5 SSW	WS: 1 G:5 SSE	WS: 1 G:4 E	WS: 4 G:11 S	WS: 6 G:11 SSW	WS: 6 G:9 S	WS: 6 G:8 SSE	WS: 6 G:9 SSE	WS: 8 G:11 SE	WS: 10 G:13 SE	WS: 13 G:17 SE	WS: 13 G:17 SSE	WS: 13 G:18 SSE	WS: 13 G:18 SSE	WS: 13 G:16 SSE	WS: 11 G:15 SSE	WS: 9 G:15 SSE	WS: 8 G:14 SSE	WS: 6 G:12 S	WS: 5 G:10 S	WS: 3 G:8 S	WS: 3 G:6 SSE	WS: 2 G:4 S	WS: 1 G:3 S	WS: 1 G:2 SSE	WS: 1 G:2 SSE	WS: 1 G:2 SSE	WS: 3 G:5 S	WS: 6 G:8 S	WS: 7 G:9 SSE	WS: 7 G:11 SSE	WS: 8 G:12 SSE	WS: 10 G:15 SSE	WS: 10 G:16 SSE
Houston Pilots L - Greens Bayou	WS: 3 G:9 SSW	WS: 2 G:8 SSW	WS: 1 G:6 SW	WS: 1 G:5 SSE	WS: 1 G:3 E	WS: 4 G:11 S	WS: 6 G:11 SSW	WS: 6 G:9 S	WS: 6 G:8 SSE	WS: 7 G:9 SE	WS: 10 G:12 SE	WS: 12 G:15 SE	WS: 14 G:18 SE	WS: 14 G:18 SE	WS: 13 G:18 SSE	WS: 13 G:18 SSE	WS: 11 G:16 SSE	WS: 9 G:15 SSE	WS: 8 G:14 SSE	WS: 6 G:12 S	WS: 5 G:10 S	WS: 3 G:7 S	WS: 3 G:5 S	WS: 2 G:4 S	WS: 1 G:3 S	WS: 1 G:2 SSE	WS: 1 G:2 SSE	WS: 1 G:2 SSE	WS: 3 G:5 S	WS: 6 G:8 S	WS: 7 G:9 SSE	WS: 7 G:11 SSE	WS: 9 G:12 SSE	WS: 10 G:14 SSE	WS: 10 G:15 SSE	
Houston Pilots K - Shell Crude	WS: 3 G:10 SSW	WS: 2 G:10 SSW	WS: 1 G:7 SW	WS: 1 G:6 S	WS: 1 G:4 SE	WS: 4 G:11 SSW	WS: 6 G:10 SSW	WS: 6 G:9 S	WS: 6 G:8 SSE	WS: 9 G:11 SE	WS: 10 G:13 SE	WS: 13 G:16 SE	WS: 14 G:18 SE	WS: 14 G:19 SE	WS: 14 G:19 SE	WS: 13 G:18 SSE	WS: 11 G:16 SSE	WS: 9 G:15 SSE	WS: 8 G:14 SSE	WS: 7 G:12 S	WS: 5 G:10 S	WS: 4 G:8 S	WS: 3 G:6 S	WS: 2 G:4 S	WS: 1 G:3 S	WS: 1 G:3 SSE	WS: 1 G:2 SSE	WS: 1 G:2 SSE	WS: 1 G:2 SSE	WS: 3 G:5 SSE	WS: 6 G:8 S	WS: 7 G:10 SSE	WS: 8 G:11 SSE	WS: 9 G:12 SSE	WS: 10 G:14 SSE	WS: 10 G:15 SSE
Houston Pilots J - Lynchburg Ferries	WS: 3 G:12 SSW	WS: 3 G:11 SSW	WS: 2 G:9 SW	WS: 1 G:8 SSW	WS: 1 G:5 SSW	WS: 3 G:11 SSW	WS: 6 G:10 SSW	WS: 6 G:9 S	WS: 7 G:9 SSE	WS: 9 G:11 SE	WS: 11 G:13 SE	WS: 13 G:16 SE	WS: 14 G:19 SE	WS: 14 G:20 SE	WS: 14 G:18 SSE	WS: 14 G:18 SSE	WS: 12 G:17 SSE	WS: 10 G:16 SSE	WS: 8 G:14 SSE	WS: 7 G:12 S	WS: 6 G:10 S	WS: 4 G:9 S	WS: 4 G:7 S	WS: 3 G:5 S	WS: 2 G:4 S	WS: 2 G:3 S	WS: 2 G:2 SSE	WS: 2 G:2 SSE	WS: 2 G:2 SSE	WS: 3 G:5 S	WS: 6 G:8 S	WS: 7 G:9 SSE	WS: 9 G:11 SSE	WS: 10 G:12 SSE	WS: 11 G:14 SSE	WS: 11 G:15 SSE
Houston Pilots I - Exxon 3	WS: 4 G:14 SSW	WS: 4 G:14 SSW	WS: 4 G:14 SW	WS: 3 G:12 SW	WS: 2 G:9 W	WS: 4 G:11 SSW	WS: 6 G:10 SSW	WS: 7 G:9 S	WS: 7 G:9 SSE	WS: 10 G:12 SE	WS: 12 G:14 SE	WS: 13 G:17 SE	WS: 14 G:18 SSE	WS: 14 G:19 SSE	WS: 15 G:20 SSE	WS: 15 G:18 SSE	WS: 14 G:17 SSE	WS: 12 G:16 SSE	WS: 9 G:14 SSE	WS: 8 G:12 S	WS: 7 G:11 S	WS: 5 G:10 S	WS: 5 G:9 S	WS: 4 G:7 S	WS: 3 G:6 S	WS: 3 G:5 SSW	WS: 2 G:4 S	WS: 2 G:4 S	WS: 3 G:6 S	WS: 6 G:8 S	WS: 7 G:9 SSE	WS: 8 G:11 SSE	WS: 10 G:13 SSE	WS: 12 G:15 SSE	WS: 12 G:16 SSE	
Houston Pilots H - Morgans Point	WS: 7 G:15 S	WS: 8 G:15 SSW	WS: 8 G:16 SSW	WS: 6 G:14 SSW	WS: 5 G:12 SW	WS: 6 G:11 SSW	WS: 6 G:10 SSW	WS: 7 G:9 S	WS: 7 G:9 SSE	WS: 12 G:13 SE	WS: 13 G:16 SE	WS: 15 G:18 SE	WS: 16 G:19 SSE	WS: 16 G:21 SSE	WS: 15 G:18 SSE	WS: 15 G:18 SSE	WS: 14 G:17 SSE	WS: 13 G:16 SSE	WS: 11 G:15 SSE	WS: 10 G:14 S	WS: 9 G:13 S	WS: 8 G:11 S	WS: 8 G:13 S	WS: 7 G:11 S	WS: 6 G:10 S	WS: 5 G:9 S	WS: 4 G:8 S	WS: 4 G:6 S	WS: 3 G:5 S	WS: 4 G:7 S	WS: 6 G:9 SSE	WS: 8 G:11 SSE	WS: 9 G:12 SSE	WS: 10 G:13 SSE	WS: 12 G:15 SSE	WS: 12 G:16 SSE
Houston Pilots G - 75/76	WS: 11 G:15 S	WS: 13 G:17 S	WS: 12 G:16 S	WS: 11 G:15 SSW	WS: 9 G:13 SSW	WS: 8 G:11 SSW	WS: 6 G:9 SSW	WS: 6 G:9 S	WS: 6 G:11 SE	WS: 14 G:14 SE	WS: 16 G:17 SE	WS: 17 G:19 SE	WS: 18 G:20 SSE	WS: 18 G:20 SSE	WS: 15 G:18 SSE	WS: 15 G:18 SSE	WS: 14 G:17 SSE	WS: 13 G:16 SSE	WS: 12 G:15 SSE	WS: 11 G:14 S	WS: 10 G:13 S	WS: 9 G:12 S	WS: 8 G:11 S	WS: 7 G:10 S	WS: 6 G:9 S	WS: 5 G:8 S	WS: 4 G:7 S	WS: 3 G:6 S	WS: 4 G:7 S	WS: 6 G:9 SSE	WS: 8 G:11 SSE	WS: 9 G:12 SSE	WS: 10 G:13 SSE	WS: 11 G:14 SSE	WS: 11 G:15 SSE	
Houston Pilots F - 63/64	WS: 13 G:16 S	WS: 14 G:17 S	WS: 13 G:16 S	WS: 12 G:15 SSW	WS: 10 G:13 SSW	WS: 9 G:12 SSW	WS: 6 G:9 SSW	WS: 8 G:10 SSE	WS: 11 G:11 SSE	WS: 14 G:14 SE	WS: 15 G:16 SE	WS: 16 G:17 SE	WS: 17 G:18 SSE	WS: 17 G:19 SSE	WS: 15 G:18 SSE	WS: 15 G:18 SSE	WS: 14 G:17 SSE	WS: 13 G:16 SSE	WS: 12 G:15 SSE	WS: 12 G:14 S	WS: 12 G:13 S	WS: 11 G:12 S	WS: 10 G:11 S	WS: 9 G:10 S	WS: 8 G:9 S	WS: 7 G:8 S	WS: 6 G:7 S	WS: 6 G:6 S	WS: 6 G:5 S	WS: 7 G:8 S	WS: 8 G:9 SSE	WS: 9 G:10 SSE	WS: 10 G:11 SSE	WS: 11 G:12 SSE	WS: 11 G:13 SSE	
Houston Pilots E - 51/52	WS: 14 G:16 S	WS: 15 G:18 S	WS: 14 G:16 S	WS: 13 G:15 S	WS: 11 G:13 S	WS: 10 G:12 SSW	WS: 7 G:9 S	WS: 10 G:10 SSE	WS: 10 G:11 SSE	WS: 13 G:14 SSE	WS: 14 G:15 SSE	WS: 14 G:15 SSE	WS: 16 G:17 SSE	WS: 16 G:17 SSE	WS: 15 G:16 SSE	WS: 15 G:16 SSE	WS: 14 G:15 SSE	WS: 14 G:14 SSE	WS: 13 G:13 SSE	WS: 13 G:12 SSE	WS: 13 G:11 S	WS: 12 G:10 S	WS: 12 G:9 S	WS: 10 G:8 S	WS: 9 G:7 S	WS: 8 G:6 S	WS: 7 G:5 S	WS: 7 G:4 S	WS: 7 G:3 S	WS: 7 G:2 S	WS: 8 G:3 SSE	WS: 8 G:4 SSE	WS: 9 G:5 SSE	WS: 10 G:6 SSE	WS: 11 G:7 SSE	WS: 11 G:8 SSE
Houston Pilots D - 37/38	WS: 14 G:17 S	WS: 14 G:18 S	WS: 13 G:16 S	WS: 12 G:15 S	WS: 11 G:14 S	WS: 10 G:12 SSW	WS: 8 G:9 S	WS: 10 G:10 SSE	WS: 11 G:11 SSE	WS: 13 G:13 SSE	WS: 13 G:14 SSE	WS: 13 G:14 SSE	WS: 13 G:15 SSE	WS: 14 G:16 SSE	WS: 14 G:16 SSE	WS: 14 G:15 SSE	WS: 14 G:14 SSE	WS: 13 G:13 SSE	WS: 13 G:12 SSE	WS: 13 G:11 S	WS: 12 G:10 S	WS: 12 G:9 S	WS: 10 G:8 S	WS: 9 G:7 S	WS: 8 G:6 S	WS: 7 G:5 S	WS: 7 G:4 S	WS: 7 G:3 S	WS: 7 G:2 S	WS: 8 G:3 SSE	WS: 8 G:4 SSE	WS: 9 G:5 SSE	WS: 10 G:6 SSE	WS: 11 G:7 SSE	WS: 11 G:8 SSE	
Houston Pilots C - 25/26	WS: 13 G:17 S	WS: 13 G:17 S	WS: 12 G:16 S	WS: 11 G:15 S	WS: 9 G:13 S	WS: 8 G:12 SSW	WS: 8 G:9 S	WS: 9 G:10 SSE	WS: 10 G:11 SSE	WS: 11 G:12 SSE	WS: 13 G:14 SSE	WS: 12 G:13 SSE	WS: 11 G:12 SSE	WS: 11 G:11 SSE	WS: 14 G:15 SSE	WS: 13 G:14 SSE	WS: 13 G:13 SSE	WS: 13 G:12 SSE	WS: 13 G:11 S	WS: 12 G:10 S	WS: 12 G:9 S	WS: 12 G:8 S	WS: 12 G:7 S	WS: 10 G:6 S	WS: 9 G:5 S	WS: 8 G:4 S	WS: 7 G:3 S	WS: 7 G:2 S	WS: 7 G:1 S	WS: 8 G:2 SSE	WS: 8 G:3 SSE	WS: 9 G:4 SSE	WS: 10 G:5 SSE	WS: 11 G:6 SSE	WS: 11 G:7 SSE	
Houston Pilots B - 11/12	WS: 14 G:17 S	WS: 14 G:17 S	WS: 12 G:16 S	WS: 11 G:15 S	WS: 10 G:13 S	WS: 10 G:12 S	WS: 9 G:10 S	WS: 9 G:11 S	WS: 11 G:12 S	WS: 10 G:11 SSE	WS: 12 G:13 SSE	WS: 12 G:12 SSE	WS: 10 G:11 SSE	WS: 10 G:10 SSE	WS: 13 G:14 SSE	WS: 13 G:13 SSE	WS: 13 G:12 SSE	WS: 13 G:11 S	WS: 13 G:10 S	WS: 13 G:9 S	WS: 13 G:8 S	WS: 12 G:7 S	WS: 12 G:6 S	WS: 12 G:5 S	WS: 10 G:4 S	WS: 9 G:3 S	WS: 8 G:2 S	WS: 7 G:1 S	WS: 7 G:1 S	WS: 8 G:2 SSE	WS: 8 G:3 SSE	WS: 9 G:4 SSE	WS: 10 G:5 SSE	WS: 11 G:6 SSE	WS: 11 G:7 SSE	
Houston Pilots A - 1 & 2 Bravo	WS: 16 G:18 S	WS: 16 G:18 S	WS: 15 G:16 S	WS: 14 G:15 S	WS: 12 G:13 S	WS: 12 G:13 S	WS: 9 G:10 S	WS: 10 G:11 S	WS: 12 G:12 S	WS: 9 G:10 SSE	WS: 11 G:12 SSE	WS: 10 G:11 SSE	WS: 9 G:11 SSE	WS: 13 G:14 SSE	WS: 14 G:15 SSE	WS: 13 G:14 SSE	WS: 14 G:15 SSE	WS: 14 G:14 SSE	WS: 14 G:13 SSE	WS: 14 G:12 SSE	WS: 14 G:11 S	WS: 14 G:10 S	WS: 14 G:9 S	WS: 14 G:8 S	WS: 13 G:7 S	WS: 12 G:6 S	WS: 11 G:5 S	WS: 10 G:4 S	WS: 9 G:3 S	WS: 8 G:2 S	WS: 9 G:1 S	WS: 9 G:1 S	WS: 8 G:2 SSE	WS: 9 G:3 SSE	WS: 10 G:4 SSE	WS: 11 G:5 SSE

See slides below for official thoughts on winds.

Houston Pilots: Tue. 7/26/2022

Forecast Discussion

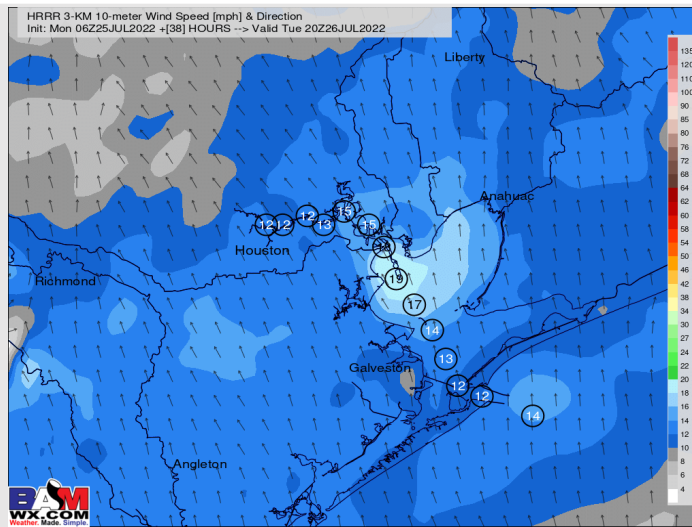
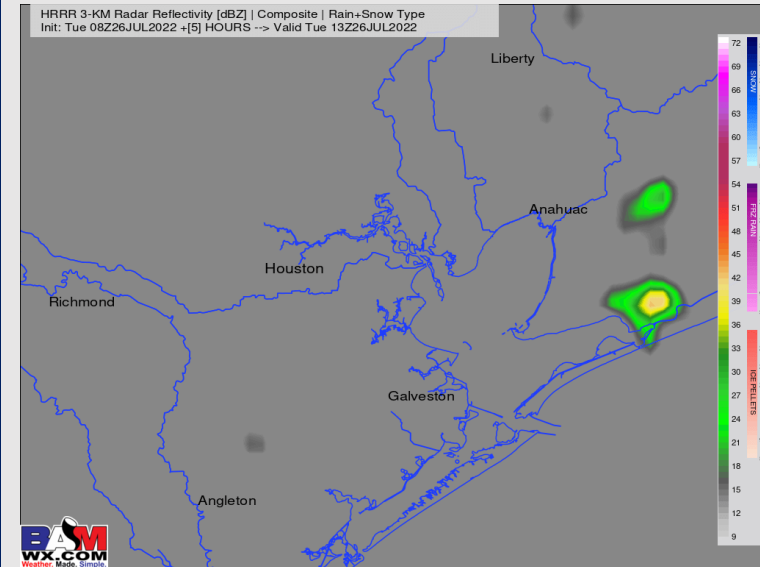
Precip: Another day of low end chances of seeing a few isolated pop ups around the area with coverage likely staying rather isolated (20% chances on the day). If caught under a cell, a rather brief downpour would be possible.

Wind: Winds (8-13 MPH sustained as of 4:30 AM) likely weaken some this morning of the S at the boarding station to 5-10 MPH with an occasional gust to 15 MPH . By ~3 PM, winds turn more out of the SSE/SE at 13-18 MPH with gusts to 18-23 MPH.

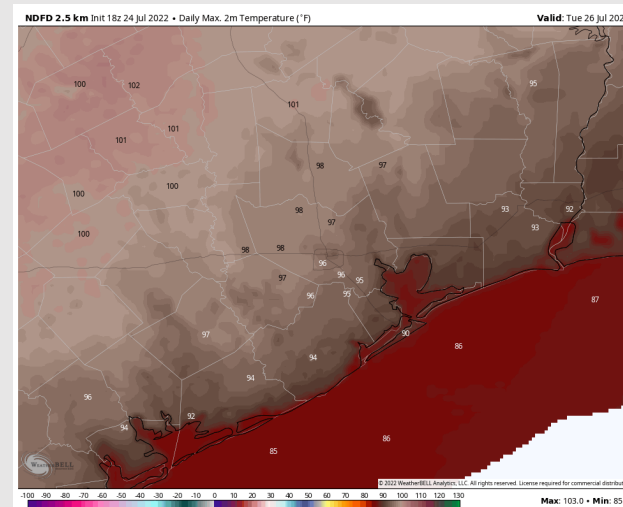
Temps: Highs likely reach the upper 80s to low 90s F for most stations.

Visibility: Not anticipating any fog concerns at this time.

Precip Forecast: 10 AM CT



Wind Speed
2 PM CT



High Temps

Houston Pilots: Wed. 7/27/2022

Forecast Discussion

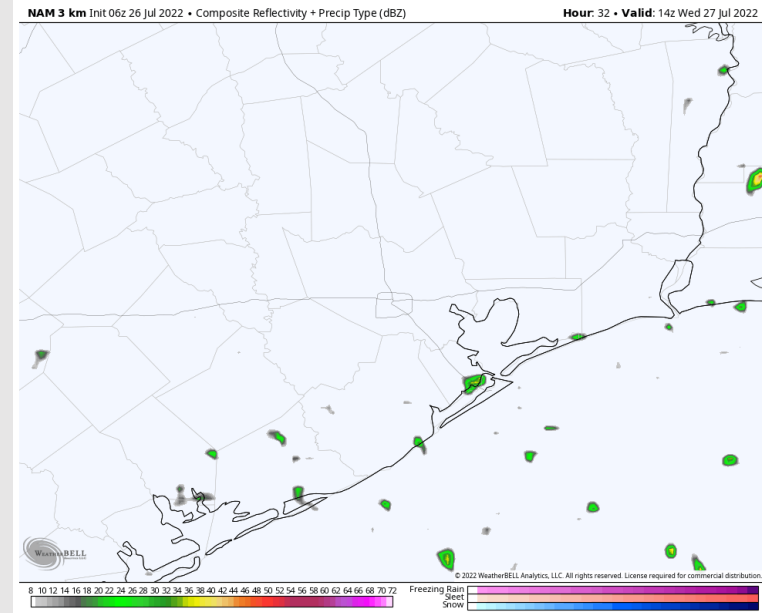
Precip: Isolated to spotty showers look to be possible mainly for the late morning and afternoon hours. Chances will be slightly higher (~30%), but still anticipating more dry time than not for Wednesday.

Wind: Winds are 5-10 MPH sustained veering from the south to the SE throughout the AM hours of Wed. Winds look to slowly increase to 10-15 MPH sustained after noon for the rest of the day with gusts to 20 MPH possible.

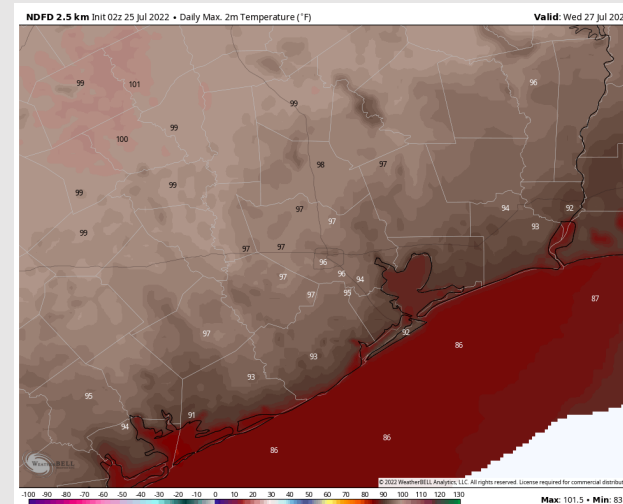
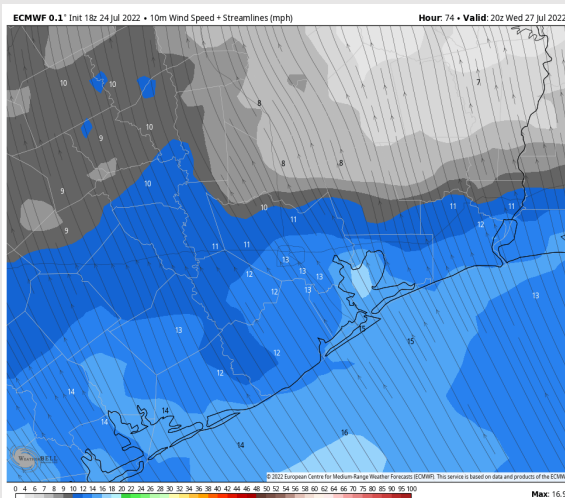
Temps: Highs likely reach the low to mid 90s F for most stations on Wednesday.

Visibility: Not anticipating any fog concerns at this time.

Precip Forecast: 10 AM CT



Wind Speed
3 PM CT



High Temps
Wed

Houston Pilots: Thu. 7/28/2022

Forecast Discussion

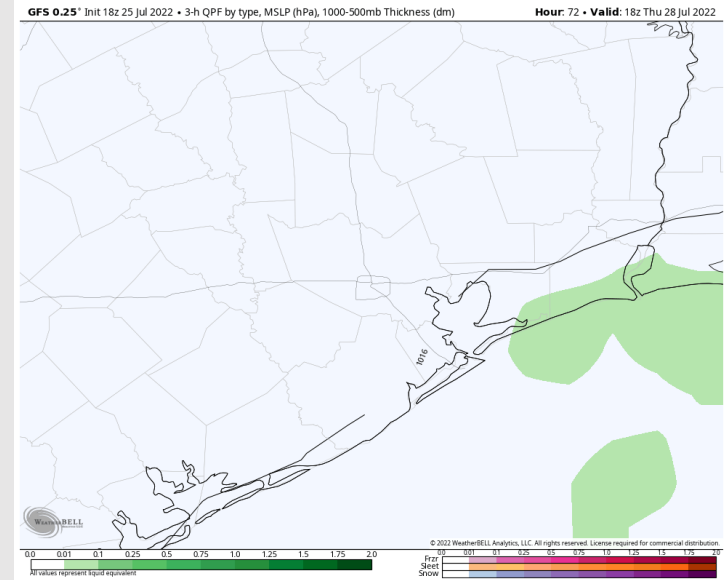
Precip: A few spotty showers look to be possible into the late morning and afternoon hours of Thursday. Anticipating more dry time than not.

Wind: Winds look to continue 5-10 MPH sustained for Thursday AM, and increase closer to 10-15 MPH sustained for the PM hours with a few gusts to 20 MPH possible. Winds remain out of the S/SSE.

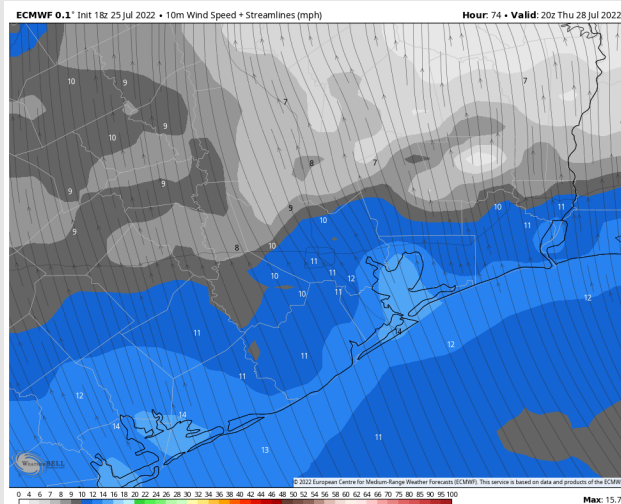
Temps: Highs likely reach the low 90s F for most stations, with warmer temps closer to the Hou metro area.

Visibility: No fog conditions anticipated at this time.

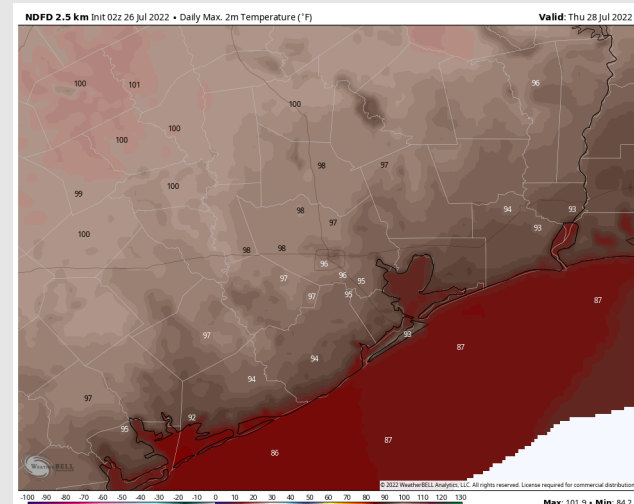
Precip Forecast: 1 PM CT



Wind Speed
3 PM CT



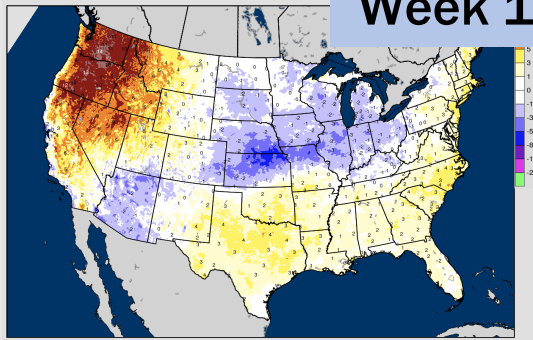
High Temps
Thu



Houston Pilots: 7/26/22

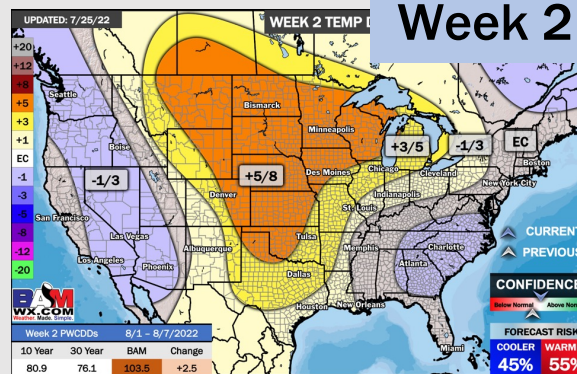
BAMCast Average Temperature Anomaly [°F]
7-DAY AVG for Mon 25JUL2022 thru Sun 31JUL2022 Days 1 to 7

Week 1

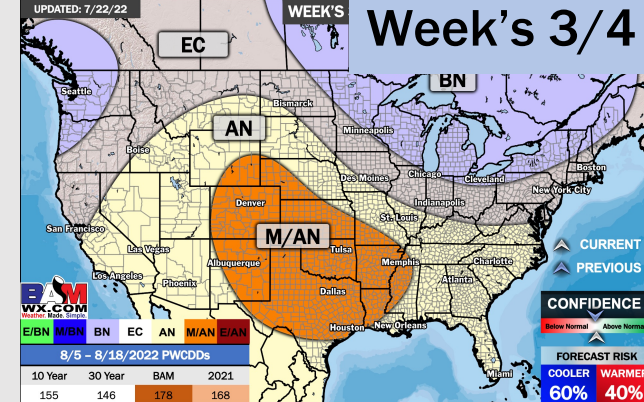


BAM **WX.COM**

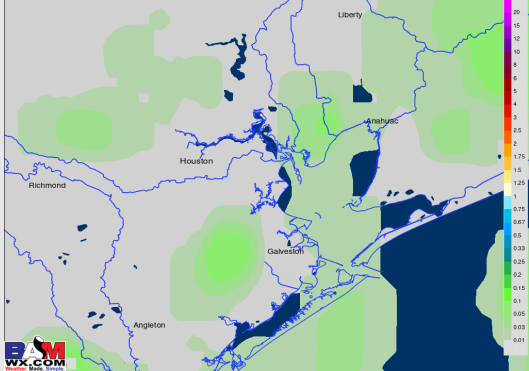
Week 2



Week's 3/4

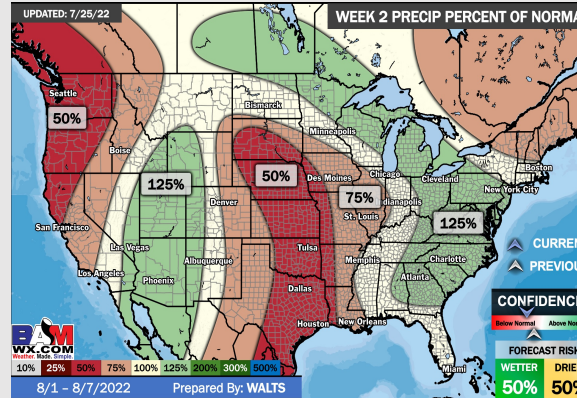


NWS WPC Total Precipitation [inches]
Accum thru Tue 12Z02AUG2022 +168Hours [Init: 12Z26JUL2022]

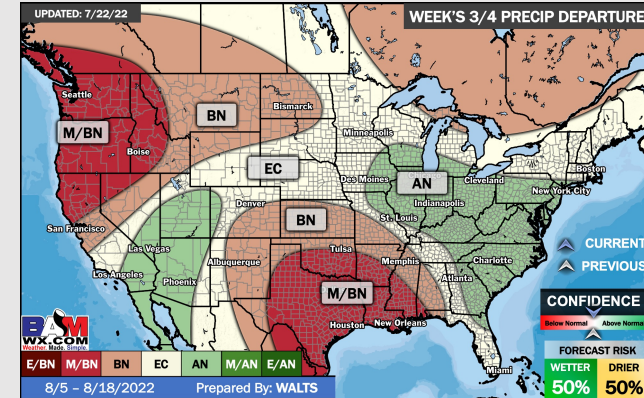


BAM **WX.COM**

Week 2



Week's 3/4



- Another week with above normal temperatures. Daily, minor chances will be possible over the next few day, but not widespread heavy threats at this time.
- Week 2 likely features above normal risks for temperatures and below normal precipitation risks.
- The weeks ¾ timeframe into the first couple weeks of August looks to feature above normal temperatures and below normal risks for precip.