

Houston Pilots Forecast Package

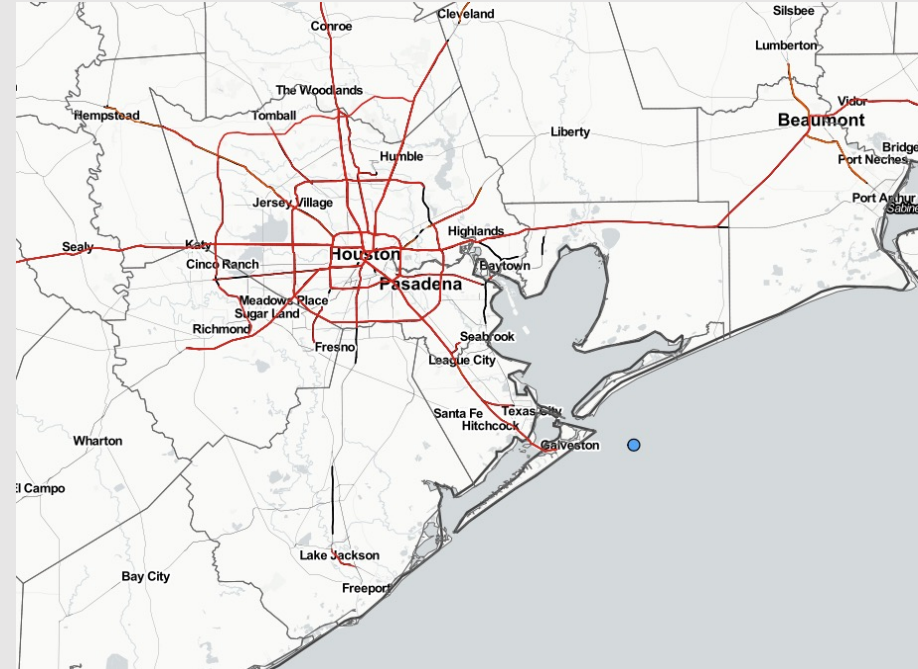


Updated: 5:00 AM CT
Monday, July 25, 2022

Forecaster: Vince Bryan

Weather Headlines

- A few minor chances for precipitation the next few days (theme stays isolated / hit and miss) – nothing significant in terms of high precip chances with more dry time than not.
- Flow will stay predominately out of the S/SSE over the next few days.
- Not favoring any tropical threats the next 7 days.
- Above average temperatures look to continue into August.



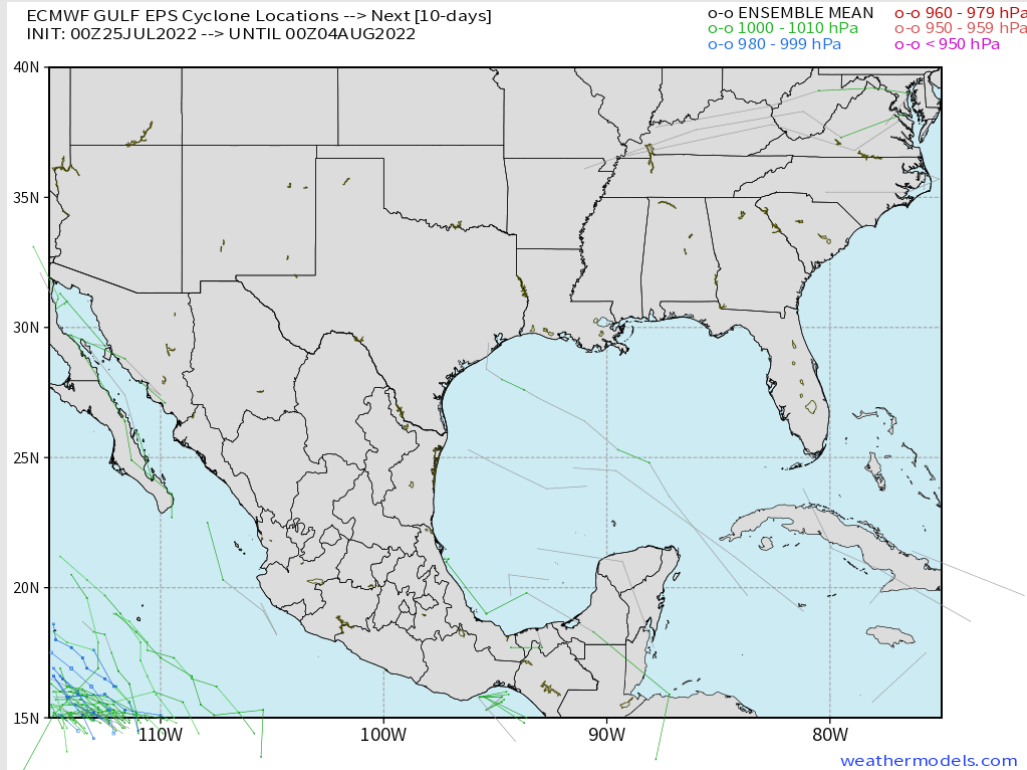
Radar/ NWS Alerts: 5:00 AM CT



As always, please do not hesitate to reach out to us with any forecast questions via the chat option on the Weather Porthole or our on-call number, **(317)-560-8122** press 1 for forecast questions.

Houston Pilots Extended Range Tropical Report

Various model tracks next 7 days



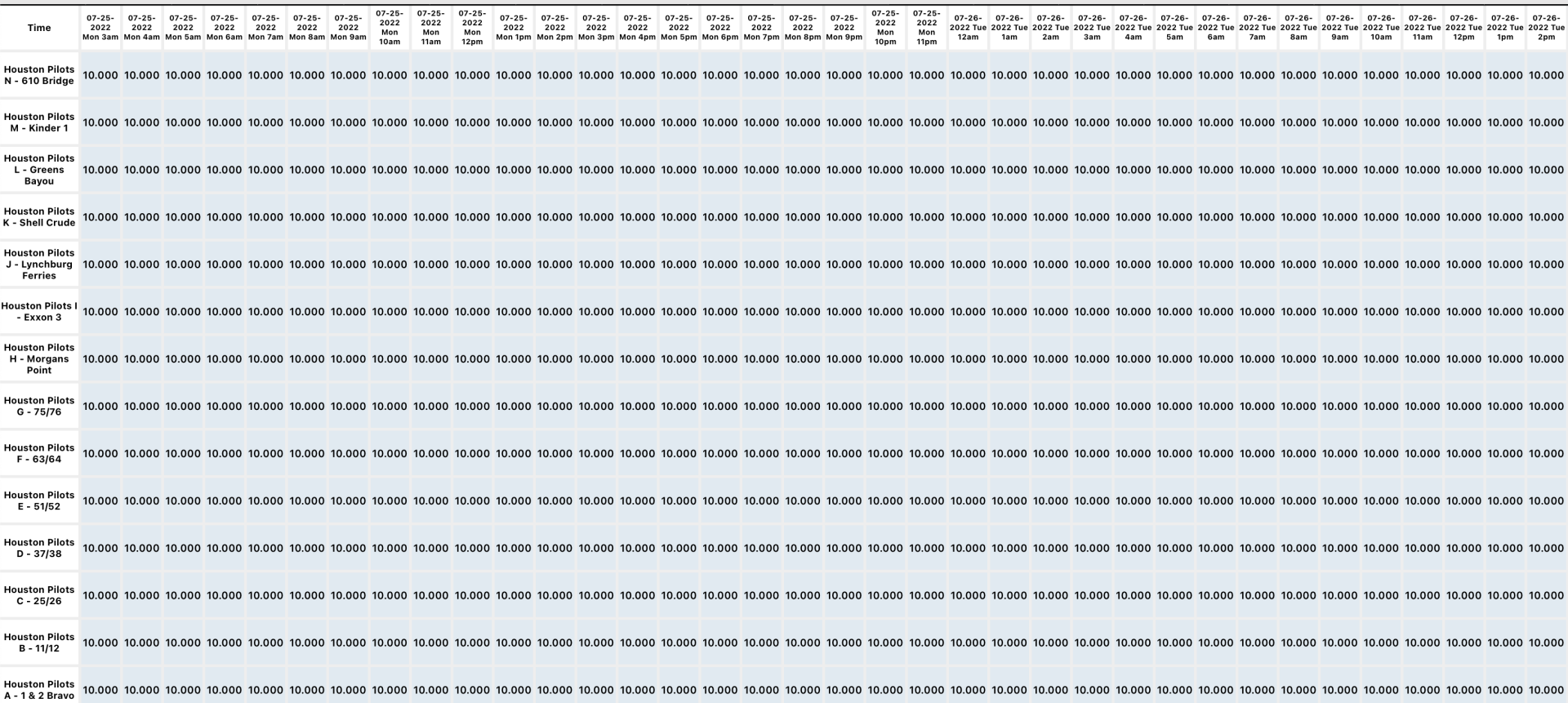
Not favoring any tropical threats the next 7 days.

Confidence

Above
Normal

Below
Normal

The image contains two logos. On the left is the logo for BAM WX.COM, featuring the letters 'BAM' in a stylized font with a black and white swirl, followed by 'WX.COM' in a bold, black, sans-serif font, and the tagline 'Weather. Made. Simple.' in a smaller, blue, sans-serif font. On the right is the logo for Houston Pilots, featuring a large, stylized red 'H' with a black outline, and the text 'Houston Pilots' in a black, serif font to its right.



Houston Pilots Wind Report



Time	07-25-2022 Mon 3am	07-25-2022 Mon 4am	07-25-2022 Mon 5am	07-25-2022 Mon 6am	07-25-2022 Mon 7am	07-25-2022 Mon 8am	07-25-2022 Mon 9am	07-25-2022 Mon 10am	07-25-2022 Mon 11am	07-25-2022 Mon 12pm	07-25-2022 Mon 1pm	07-25-2022 Mon 2pm	07-25-2022 Mon 3pm	07-25-2022 Mon 4pm	07-25-2022 Mon 5pm	07-25-2022 Mon 6pm	07-25-2022 Mon 7pm	07-25-2022 Mon 8pm	07-25-2022 Mon 9pm	07-25-2022 Mon 10pm	07-25-2022 Mon 11pm	07-26-2022 Tue 12am	07-26-2022 Tue 1am	07-26-2022 Tue 2am	07-26-2022 Tue 3am	07-26-2022 Tue 4am	07-26-2022 Tue 5am	07-26-2022 Tue 6am	07-26-2022 Tue 7am	07-26-2022 Tue 8am	07-26-2022 Tue 9am	07-26-2022 Tue 10am	07-26-2022 Tue 11am	07-26-2022 Tue 12pm	07-26-2022 Tue 1pm	07-26-2022 Tue 2pm		
Houston Pilots N - 610 Bridge	WS: 2 G:9 SSE	WS: 2 G:8 SSW	WS: 2 G:9 SW	WS: 2 G:8 SW	WS: 2 G:8 SSW	WS: 4 G:12 SSW	WS: 6 G:9 SSW	WS: 5 G:7 SW	WS: 3 G:4 S	WS: 2 G:4 SSE	WS: 5 G:6 SE	WS: 8 G:10 SE	WS: 10 G:12 SE	WS: 11 G:15 SE	WS: 12 G:16 SSE	WS: 13 G:18 SSE	WS: 12 G:18 SSE	WS: 11 G:17 SSE	WS: 9 G:15 SSE	WS: 7 G:14 SSE	WS: 6 G:11 S	WS: 4 G:8 SSE	WS: 3 G:7 S	WS: 2 G:5 S	WS: 2 G:4 S	WS: 1 G:3 S	WS: 0 G:3 S	WS: 1 G:3 S	WS: 1 G:2 S	WS: 1 G:2 S	WS: 1 G:2 S	WS: 2 G:5 SSW	WS: 6 G:8 S	WS: 6 G:9 S	WS: 6 G:10 SSE	WS: 7 G:12 SSE	WS: 8 G:12 SSE	WS: 9 G:14 SSE
Houston Pilots M - Kinder 1	WS: 2 G:9 SSE	WS: 2 G:9 S	WS: 2 G:9 SW	WS: 2 G:8 SW	WS: 2 G:7 SSW	WS: 4 G:11 SSW	WS: 6 G:9 SSW	WS: 5 G:6 SW	WS: 3 G:4 S	WS: 2 G:4 SSE	WS: 6 G:7 SE	WS: 8 G:10 SE	WS: 10 G:13 SE	WS: 11 G:15 SE	WS: 12 G:17 SSE	WS: 13 G:18 SSE	WS: 12 G:18 SSE	WS: 11 G:17 SSE	WS: 9 G:15 SSE	WS: 7 G:13 SSE	WS: 6 G:11 S	WS: 4 G:8 SSE	WS: 3 G:6 S	WS: 3 G:5 S	WS: 2 G:4 S	WS: 1 G:3 S	WS: 0 G:2 S	WS: 1 G:2 S	WS: 1 G:2 S	WS: 1 G:2 S	WS: 2 G:5 SSW	WS: 6 G:8 S	WS: 6 G:9 S	WS: 7 G:10 SSE	WS: 7 G:12 SSE	WS: 9 G:12 SSE	WS: 10 G:15 SE	
Houston Pilots L - Greens Bayou	WS: 2 G:10 S	WS: 2 G:9 S	WS: 2 G:9 SW	WS: 2 G:9 SW	WS: 2 G:8 SW	WS: 4 G:11 SW	WS: 6 G:9 SSW	WS: 4 G:6 SW	WS: 3 G:4 S	WS: 2 G:4 SSE	WS: 6 G:8 SE	WS: 9 G:10 SE	WS: 11 G:13 SE	WS: 12 G:16 SE	WS: 13 G:17 SSE	WS: 13 G:18 SSE	WS: 13 G:18 SSE	WS: 11 G:17 SSE	WS: 9 G:15 SSE	WS: 7 G:13 SSE	WS: 6 G:10 S	WS: 4 G:8 SSE	WS: 3 G:6 S	WS: 3 G:5 S	WS: 2 G:4 S	WS: 1 G:3 S	WS: 1 G:2 S	WS: 1 G:2 S	WS: 1 G:2 S	WS: 2 G:5 SSW	WS: 6 G:8 SSW	WS: 7 G:9 S	WS: 7 G:10 SSE	WS: 7 G:12 SSE	WS: 9 G:12 SSE	WS: 10 G:14 SSE		
Houston Pilots K - Shell Crude	WS: 3 G:11 S	WS: 2 G:11 SSW	WS: 2 G:10 SSW	WS: 2 G:10 WSW	WS: 2 G:9 SW	WS: 4 G:11 SW	WS: 6 G:8 SW	WS: 4 G:6 SW	WS: 2 G:4 S	WS: 3 G:5 SE	WS: 8 G:9 SE	WS: 9 G:11 SE	WS: 11 G:14 SE	WS: 12 G:16 SE	WS: 13 G:17 SSE	WS: 13 G:17 SSE	WS: 13 G:18 SSE	WS: 11 G:16 SSE	WS: 9 G:15 SSE	WS: 8 G:13 SSE	WS: 6 G:10 S	WS: 4 G:8 SSE	WS: 3 G:6 S	WS: 3 G:5 S	WS: 2 G:4 S	WS: 1 G:3 S	WS: 1 G:2 S	WS: 1 G:2 S	WS: 1 G:2 S	WS: 3 G:5 SSW	WS: 6 G:8 SSW	WS: 7 G:9 S	WS: 7 G:10 SSE	WS: 8 G:12 SSE	WS: 10 G:12 SSE	WS: 11 G:15 SE		
Houston Pilots J - Lynchburg Ferries	WS: 3 G:12 S	WS: 3 G:11 SSW	WS: 3 G:11 SSW	WS: 2 G:10 SSW	WS: 1 G:10 SW	WS: 4 G:12 SW	WS: 6 G:9 SW	WS: 4 G:6 SW	WS: 2 G:4 S	WS: 4 G:5 SSE	WS: 8 G:9 SE	WS: 10 G:11 SE	WS: 12 G:14 SE	WS: 13 G:16 SE	WS: 14 G:19 SSE	WS: 14 G:18 SSE	WS: 14 G:18 SSE	WS: 12 G:17 SSE	WS: 10 G:15 SSE	WS: 8 G:13 SSE	WS: 6 G:11 S	WS: 5 G:9 SSE	WS: 4 G:7 S	WS: 4 G:6 S	WS: 3 G:5 S	WS: 2 G:4 S	WS: 2 G:3 S	WS: 2 G:2 S	WS: 1 G:3 S	WS: 3 G:5 SSW	WS: 6 G:8 SSW	WS: 7 G:9 S	WS: 7 G:10 SSE	WS: 8 G:12 SSE	WS: 10 G:12 SSE	WS: 11 G:15 SE		
Houston Pilots I - Exxon 3	WS: 5 G:14 S	WS: 4 G:14 SSW	WS: 4 G:13 SSW	WS: 3 G:12 SW	WS: 2 G:11 SW	WS: 5 G:11 SW	WS: 6 G:8 SW	WS: 4 G:6 SW	WS: 4 G:5 S	WS: 6 G:7 SSE	WS: 9 G:10 SSE	WS: 10 G:12 SSE	WS: 12 G:15 SSE	WS: 14 G:18 SSE	WS: 14 G:19 SSE	WS: 14 G:18 SSE	WS: 14 G:18 SSE	WS: 12 G:17 SSE	WS: 10 G:15 SSE	WS: 8 G:14 SSE	WS: 7 G:11 S	WS: 6 G:10 SSE	WS: 5 G:9 S	WS: 4 G:8 S	WS: 4 G:7 SSW	WS: 3 G:6 SSW	WS: 2 G:5 S	WS: 2 G:4 S	WS: 2 G:4 SSW	WS: 3 G:6 SSW	WS: 6 G:8 SSW	WS: 7 G:9 S	WS: 7 G:10 SSE	WS: 9 G:11 SSE	WS: 11 G:13 SSE	WS: 12 G:16 SSE		
Houston Pilots H - Morgans Point	WS: 8 G:15 S	WS: 7 G:15 SSW	WS: 7 G:14 SSW	WS: 6 G:13 SW	WS: 5 G:12 SW	WS: 6 G:10 SW	WS: 6 G:8 SW	WS: 4 G:6 SSW	WS: 6 G:6 SSE	WS: 8 G:9 SSE	WS: 9 G:10 SE	WS: 12 G:13 SSE	WS: 14 G:17 SSE	WS: 16 G:19 SSE	WS: 16 G:21 SSE	WS: 14 G:18 SSE	WS: 14 G:18 SSE	WS: 12 G:17 SSE	WS: 11 G:16 SSE	WS: 9 G:15 SSE	WS: 8 G:13 SSE	WS: 7 G:12 S	WS: 7 G:11 S	WS: 6 G:10 S	WS: 5 G:9 S	WS: 5 G:8 SSW	WS: 4 G:7 SSW	WS: 3 G:6 SSW	WS: 4 G:7 SSW	WS: 5 G:9 SSW	WS: 6 G:9 SSW	WS: 6 G:10 SSW	WS: 7 G:12 SSE	WS: 9 G:12 SSE	WS: 12 G:14 SSE	WS: 13 G:16 SSE		
Houston Pilots G - 75/76	WS: 12 G:16 S	WS: 11 G:15 SSW	WS: 11 G:15 SSW	WS: 10 G:13 SSW	WS: 8 G:12 SW	WS: 7 G:10 SW	WS: 6 G:8 SW	WS: 4 G:7 SW	WS: 4 G:6 SW	WS: 8 G:8 SE	WS: 8 G:8 SE	WS: 10 G:10 SE	WS: 13 G:14 SSE	WS: 17 G:18 SSE	WS: 18 G:20 SSE	WS: 14 G:18 SSE	WS: 14 G:18 SSE	WS: 13 G:18 SSE	WS: 12 G:17 SSE	WS: 11 G:16 S	WS: 10 G:15 S	WS: 9 G:14 S	WS: 8 G:13 S	WS: 8 G:12 S	WS: 7 G:12 S	WS: 7 G:11 SSW	WS: 6 G:10 SSW	WS: 5 G:9 SSW	WS: 5 G:9 SSW	WS: 5 G:8 SSW	WS: 6 G:9 SSW	WS: 6 G:9 SSW	WS: 7 G:10 SSE	WS: 9 G:11 SSE	WS: 11 G:14 SSE	WS: 12 G:16 SE		
Houston Pilots F - 63/64	WS: 13 G:16 S	WS: 12 G:16 S	WS: 13 G:15 S	WS: 11 G:13 SSW	WS: 9 G:12 SSW	WS: 7 G:9 SW	WS: 6 G:8 WSW	WS: 4 G:7 SW	WS: 8 G:9 SW	WS: 4 G:6 SW	WS: 5 G:5 S	WS: 9 G:10 SSE	WS: 12 G:13 SSE	WS: 16 G:17 SSE	WS: 18 G:19 SSE	WS: 14 G:18 SSE	WS: 14 G:18 SSE	WS: 13 G:18 SSE	WS: 12 G:17 SSE	WS: 12 G:16 SSE	WS: 11 G:15 S	WS: 10 G:14 S	WS: 9 G:13 S	WS: 9 G:13 S	WS: 8 G:12 S	WS: 8 G:12 S	WS: 7 G:11 S	WS: 6 G:10 SSW	WS: 6 G:9 SSW	WS: 6 G:9 SSW	WS: 6 G:9 SSW	WS: 6 G:9 SSW	WS: 6 G:9 SSW	WS: 7 G:11 SSE	WS: 8 G:11 SSE	WS: 9 G:13 SSE	WS: 11 G:15 SSE	
Houston Pilots E - 51/52	WS: 13 G:16 S	WS: 14 G:16 S	WS: 13 G:15 S	WS: 11 G:13 SSW	WS: 9 G:11 SSW	WS: 7 G:9 SW	WS: 4 G:7 WSW	WS: 8 G:9 SW	WS: 4 G:6 SW	WS: 3 G:5 S	WS: 6 G:6 SE	WS: 11 G:12 SSE	WS: 15 G:16 SSE	WS: 16 G:17 SSE	WS: 16 G:18 SSE	WS: 14 G:18 SSE	WS: 14 G:18 SSE	WS: 13 G:18 SSE	WS: 12 G:17 SSE	WS: 12 G:16 SSE	WS: 11 G:15 SSE	WS: 10 G:14 S	WS: 10 G:13 S	WS: 9 G:13 S	WS: 9 G:12 S	WS: 8 G:12 S	WS: 8 G:11 S	WS: 7 G:11 S	WS: 6 G:10 SSW	WS: 6 G:9 SSW	WS: 7 G:10 SSW	WS: 7 G:10 SSW	WS: 7 G:10 SSW	WS: 8 G:11 SSE	WS: 9 G:11 SSE	WS: 11 G:13 SSE	WS: 12 G:15 SSE	
Houston Pilots D - 37/38	WS: 13 G:16 S	WS: 14 G:16 S	WS: 12 G:14 S	WS: 11 G:13 SSW	WS: 9 G:11 SSW	WS: 6 G:8 SW	WS: 6 G:6 WSW	WS: 9 G:10 WSW	WS: 3 G:5 SSW	WS: 5 G:5 SSE	WS: 11 G:11 SSE	WS: 13 G:13 SSE	WS: 15 G:16 SSE	WS: 15 G:16 SSE	WS: 14 G:17 SSE	WS: 14 G:17 SSE	WS: 14 G:17 SSE	WS: 13 G:17 SSE	WS: 13 G:16 SSE	WS: 12 G:16 SSE	WS: 12 G:15 SSE	WS: 11 G:15 SSE	WS: 10 G:14 S	WS: 10 G:13 S	WS: 9 G:13 S	WS: 9 G:12 S	WS: 8 G:12 S	WS: 8 G:11 S	WS: 7 G:10 S	WS: 7 G:10 S	WS: 7 G:10 S	WS: 7 G:10 S	WS: 8 G:10 S	WS: 8 G:10 S	WS: 9 G:11 SSE	WS: 10 G:13 SSE	WS: 12 G:14 SSE	
Houston Pilots C - 25/26	WS: 11 G:16 S	WS: 12 G:16 S	WS: 10 G:14 S	WS: 10 G:13 SSW	WS: 8 G:11 SSW	WS: 5 G:8 SSW	WS: 6 G:6 SSW	WS: 8 G:8 WSW	WS: 5 G:5 SSW	WS: 3 G:5 SSW	WS: 7 G:8 SSE	WS: 11 G:11 SSE	WS: 12 G:13 SSE	WS: 14 G:15 SSE	WS: 14 G:16 SSE	WS: 13 G:16 SSE	WS: 13 G:16 SSE	WS: 12 G:17 SSE	WS: 12 G:16 SSE	WS: 12 G:15 SSE	WS: 11 G:15 SSE	WS: 10 G:14 S	WS: 10 G:13 S	WS: 9 G:13 S	WS: 9 G:12 S	WS: 8 G:11 S	WS: 8 G:11 S	WS: 7 G:10 S	WS: 7 G:10 S	WS: 7 G:10 S	WS: 7 G:10 S	WS: 8 G:10 S	WS: 8 G:10 S	WS: 9 G:11 SSE	WS: 10 G:13 SSE	WS: 11 G:13 SSE		
Houston Pilots B - 11/12	WS: 13 G:16 S	WS: 13 G:16 S	WS: 11 G:14 S	WS: 10 G:13 SSW	WS: 8 G:11 SSW	WS: 6 G:8 SSW	WS: 6 G:7 S	WS: 7 G:7 SW	WS: 5 G:6 S	WS: 6 G:6 SSE	WS: 9 G:9 SSE	WS: 10 G:11 SSE	WS: 12 G:13 SSE	WS: 13 G:14 SSE	WS: 13 G:15 SSE	WS: 13 G:16 SSE	WS: 13 G:16 SSE	WS: 13 G:17 SSE	WS: 12 G:16 SSE	WS: 12 G:16 SSE	WS: 11 G:15 SSE	WS: 11 G:15 SSE	WS: 11 G:14 S	WS: 10 G:13 S	WS: 9 G:13 S	WS: 9 G:12 S	WS: 8 G:12 S	WS: 8 G:11 S	WS: 7 G:10 S	WS: 7 G:10 S	WS: 8 G:10 S	WS: 8 G:10 S	WS: 8 G:10 S	WS: 9 G:11 SSE	WS: 10 G:12 SSE	WS: 11 G:13 SSE		
Houston Pilots A - 1 & 2 Bravo	WS: 16 G:17 S	WS: 15 G:16 S	WS: 14 G:14 S	WS: 12 G:13 SSW	WS: 11 G:11 SSW	WS: 8 G:9 SSW	WS: 8 G:8 SSW	WS: 6 G:6 SSW	WS: 5 G:5 S	WS: 5 G:5 S	WS: 7 G:7 SSE	WS: 9 G:10 SSE	WS: 11 G:12 SSE	WS: 13 G:14 SSE	WS: 13 G:14 SSE	WS: 14 G:16 SSE	WS: 14 G:17 SSE	WS: 14 G:17 SSE	WS: 13 G:16 SSE	WS: 13 G:17 SSE	WS: 12 G:16 SSE	WS: 11 G:15 SSE	WS: 11 G:14 S	WS: 10 G:13 S	WS: 10 G:13 S	WS: 9 G:12 S	WS: 9 G:12 S	WS: 8 G:12 S	WS: 8 G:11 S	WS: 8 G:11 S	WS: 8 G:10 S	WS: 8 G:10 S	WS: 8 G:10 S	WS: 9 G:11 SSE	WS: 10 G:12 SSE	WS: 11 G:13 SSE		

See slides below for official thoughts on winds.

Houston Pilots: Mon. 7/25/2022

Forecast Discussion

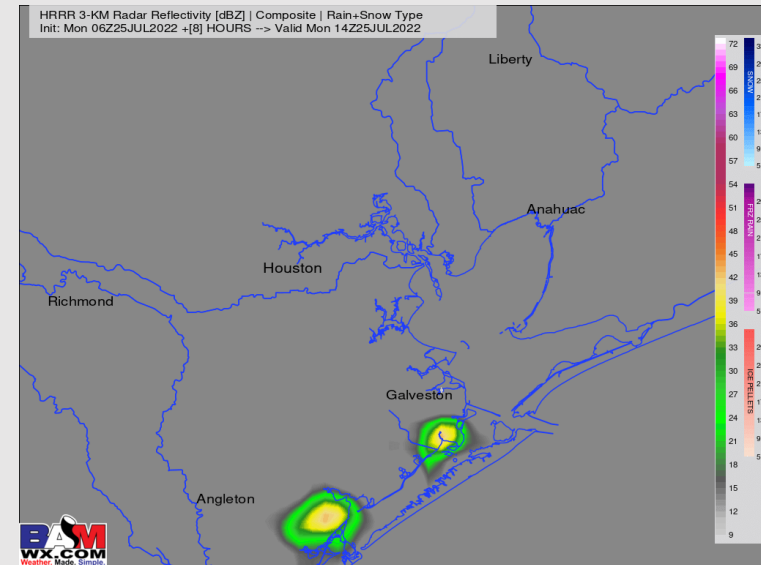
Precip: Isolated chances (10%) of a shower will be possible out through noon today. A 20% of a shower/ storm is possible from 1 PM – 5 PM. Mostly dry conditions anticipated as any coverage of precip would be rather isolated.

Wind: By 8 AM winds are anticipated to be sustained around 3 – 8 MPH (weaker for northerly stations) out of the SSW. Winds in the afternoon start to shift back out of the SE where they will pick up once again. After 2 – 3 PM, winds are anticipated to be out of the SSE around 10 – 15 MPH with gusts near 20 MPH where they will generally stay for the rest of the afternoon/ evening. Once again, after sunset, we will likely see northerly stations see weaker winds while Morgan's Point and points south will continue to see the higher sustained winds.

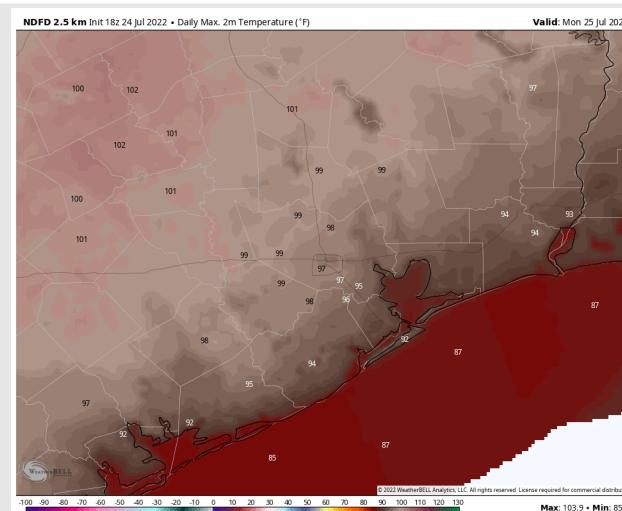
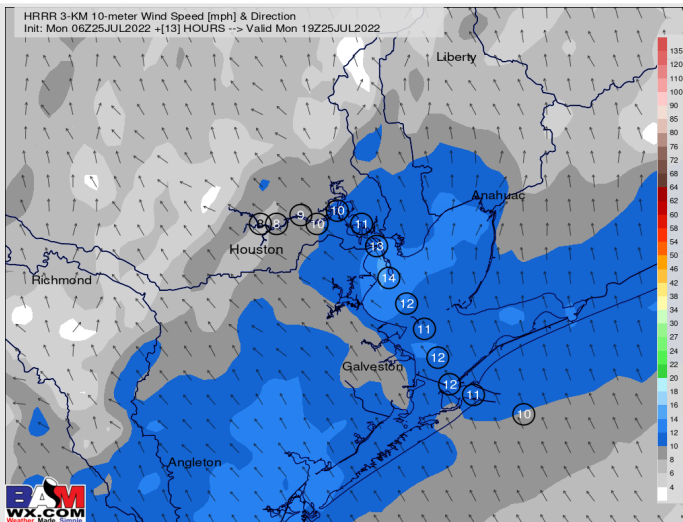
Temps: Highs look to get into the upper 80's F once again over open waters with "Feels-like" temps in the 100's F.

Visibility: No fog conditions anticipated at this time.

Precip Forecast: 10 AM CT



Wind Speed
2 PM CT



High Temps

Houston Pilots: Tue. 7/26/2022

Forecast Discussion

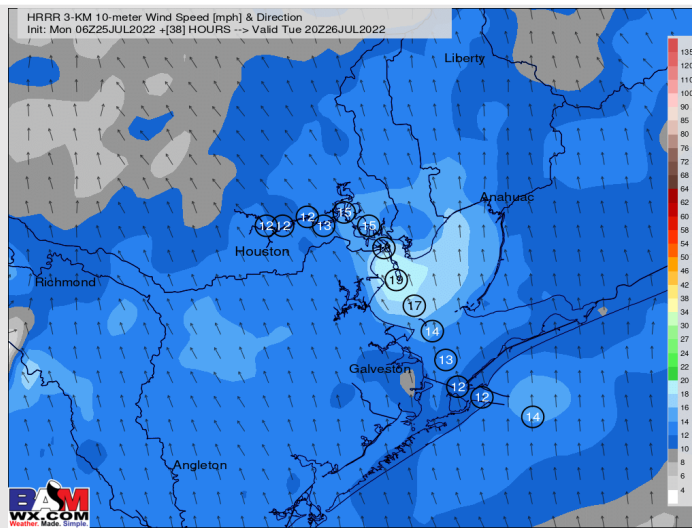
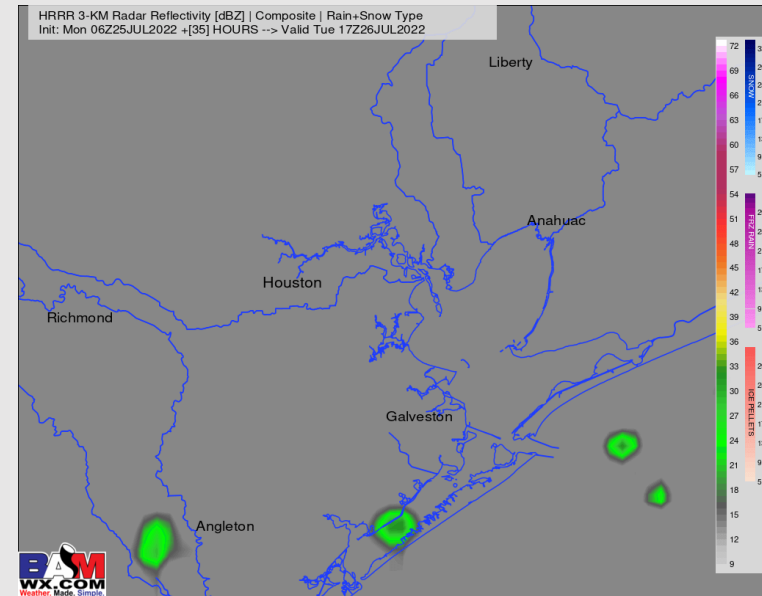
Precip: Precipitation will likely be similar to that of today (Monday) with isolated chances in the morning with slightly better chances during the first half of the afternoon. Chances likely remain a general 20% with plenty of dry time through the course of the day.

Wind: Rinse and repeat pattern in regards to winds on TUE. AM winds likely shift more out of the S/ SSW in as winds weaken to around 3 – 9 MPH sustained before winds start to pick up in the afternoon as they shift more out of the SSE around 10 – 15 MPH with gusts near 20 MPH. After the sunsets, northerly stations likely see winds drop off.

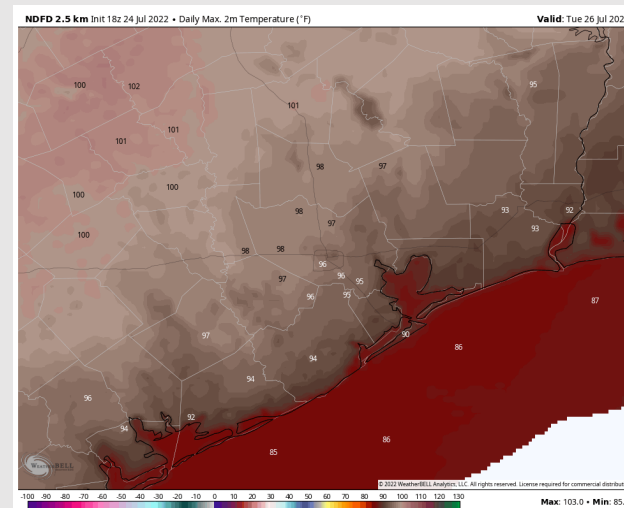
Temps: Highs likely reach the upper 80s to low 90s F for most stations.

Visibility: Not anticipating any fog concerns at this time.

Precip Forecast: 12 PM CT



Wind Speed
2 PM CT



High Temps
Tuesday

Houston Pilots: Wed. 7/27/2022

Forecast Discussion

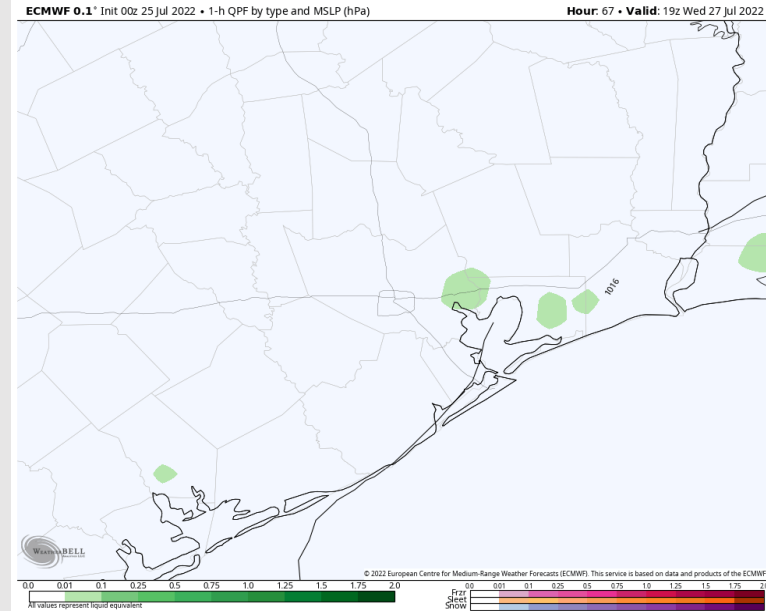
Precip: Isolated to spotty showers look to be possible into the late morning and afternoon hours. Anticipating more dry time than not for Wednesday.

Wind: Winds are 5-10 MPH sustained veering from the south to the SE throughout the AM hours of Wed. Winds look to slowly increase to 10-15 MPH sustained after noon for the rest of the day with gusts to 20 MPH possible.

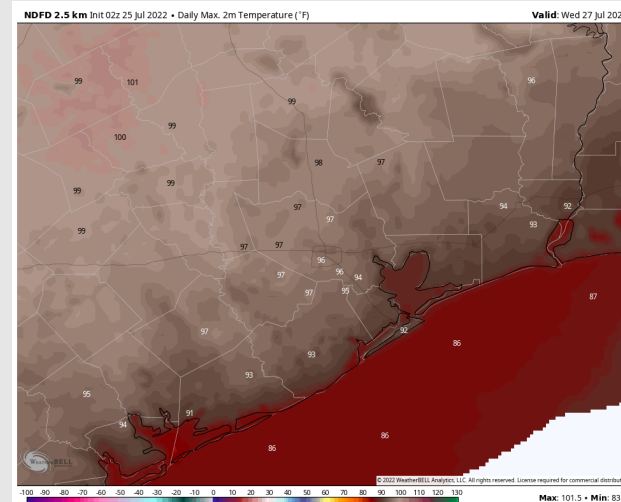
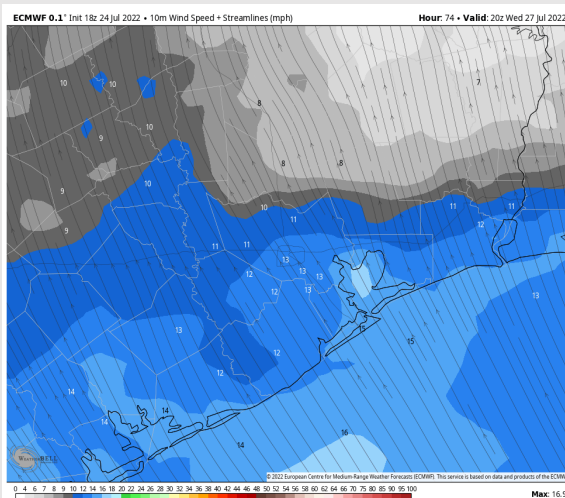
Temps: Highs likely reach the low to mid 90s F for most stations on Wednesday.

Visibility: Not anticipating any fog concerns at this time.

Precip Forecast: 10 AM CT

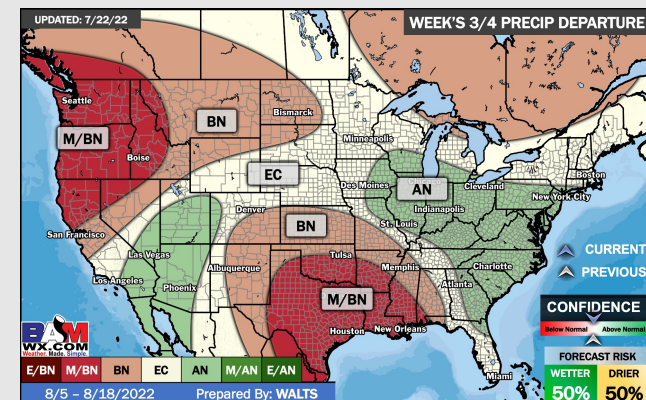
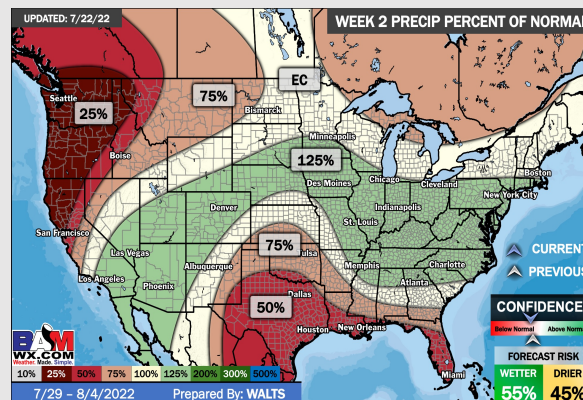
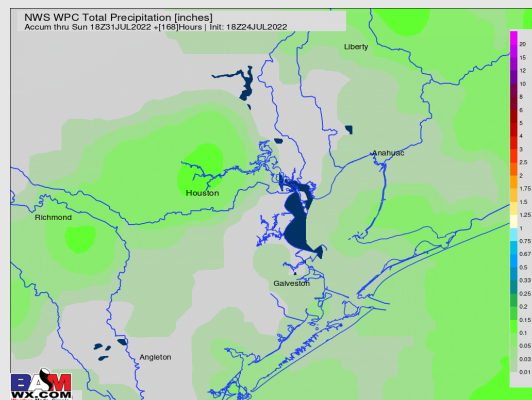
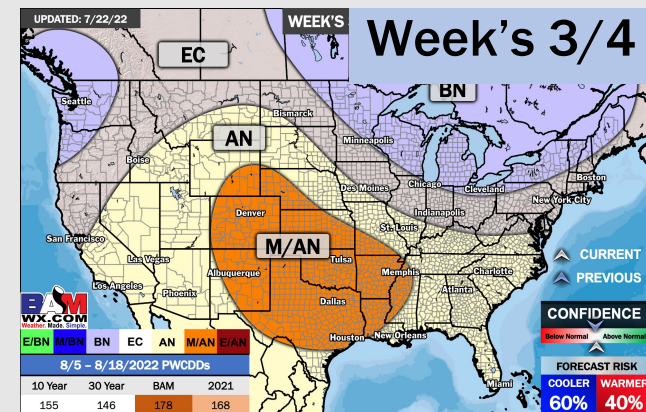
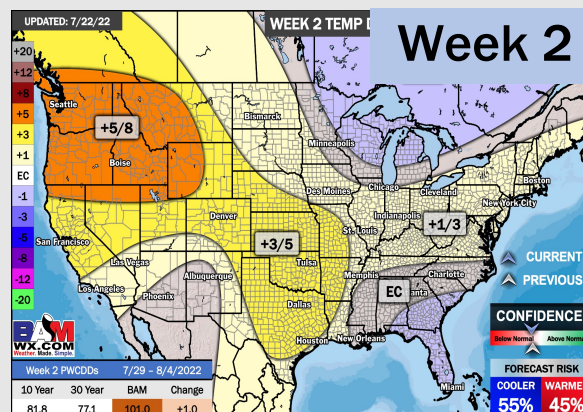
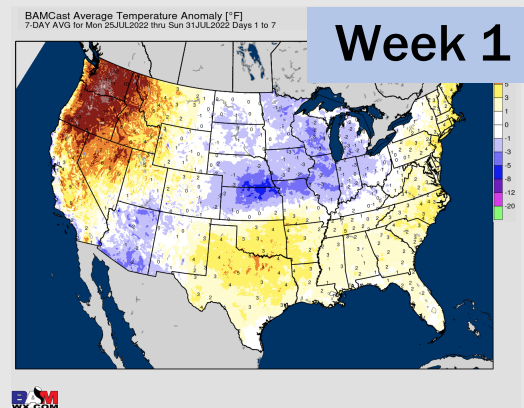


Wind Speed
3 PM CT



High Temps
Wed

Houston Pilots: 7/25/22



- Another week with above normal temperatures. Daily, minor chances will be possible over the next few day, but not widespread heavy threats at this time. The front we have mentioned in this section the last few days seems to be less likely to be situated over the HOU area.
- Week 2 likely features above normal risks for temperatures and below normal precipitation risks.
- The weeks ³/₄ timeframe into the first couple weeks of August looks to feature above normal temperatures and below normal risks for precip.