

Houston Pilots Forecast Package

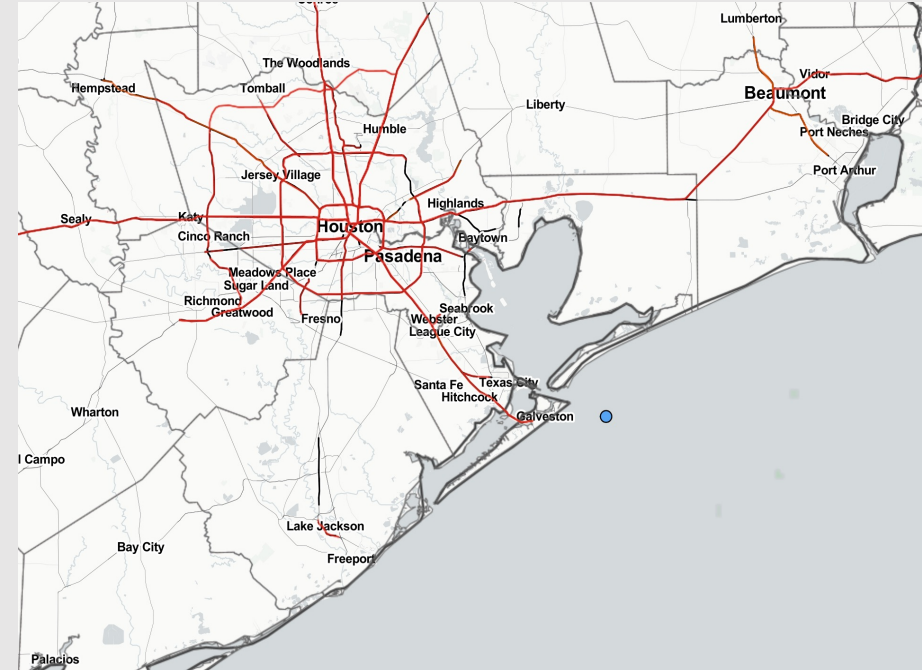


Updated: 5:00 AM CT
Sunday, July 17, 2022

Forecaster: Vince Bryan

Weather Headlines

- Outside of a few ~10-20% on a couple days over the next week, not eyeing much in the way of high precip potential.
- Flow will stay predominately out of the S/SW over the next few days.
- Not favoring any tropical threats the next 7 days.
- Above average temperatures look to continue through July.



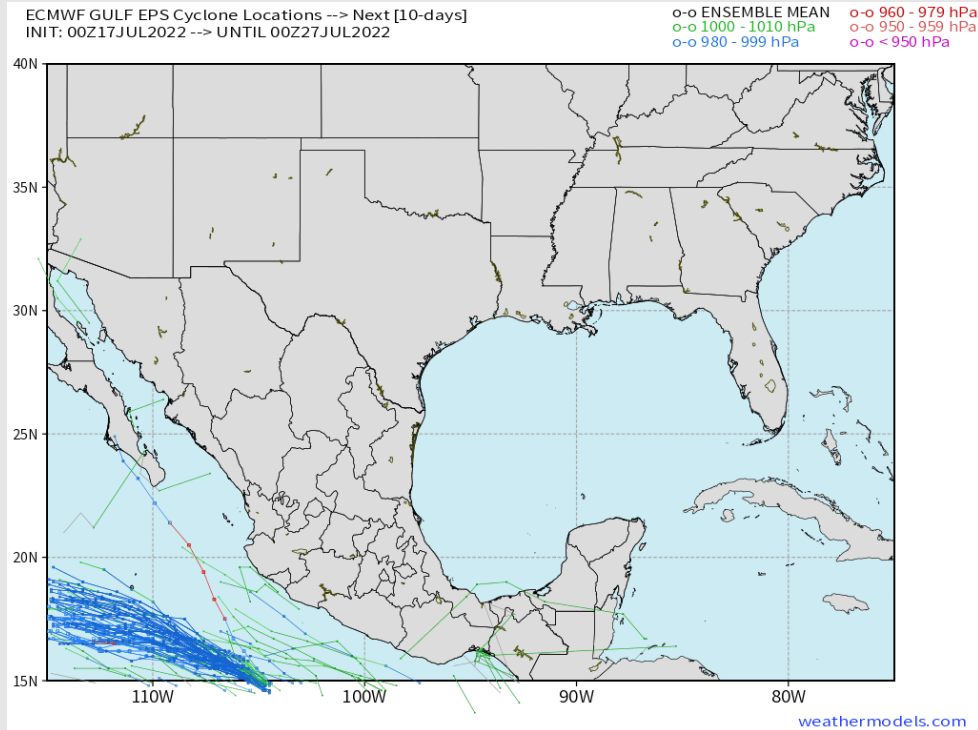
Radar/ NWS Alerts: 5:00 AM CT



As always, please do not hesitate to reach out to us with any forecast questions via the chat option on the Weather Porthole or our on-call number, **(317)-560-8122** press 1 for forecast questions.

Houston Pilots Extended Range Tropical Report

Various model tracks next 7 days



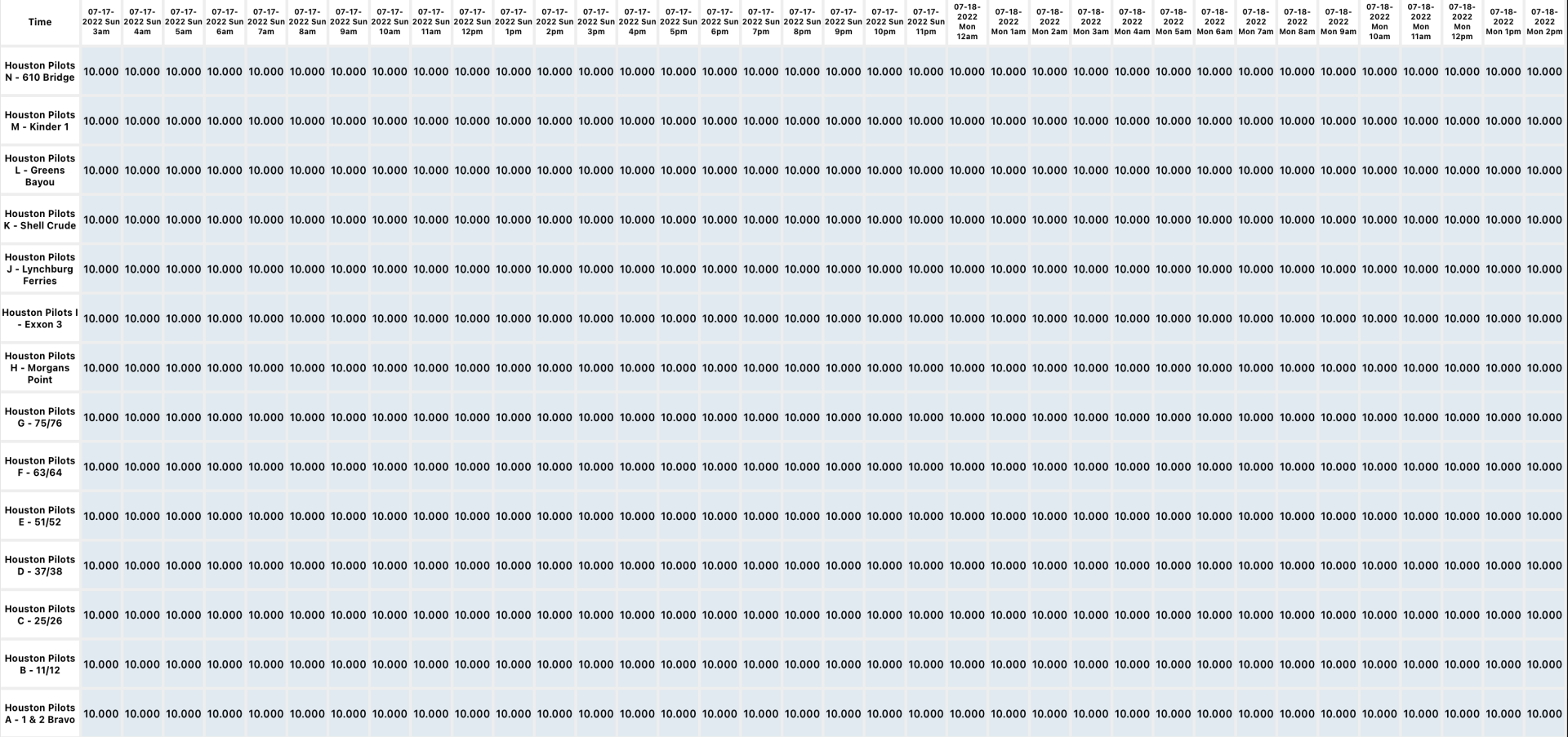
Not favoring any tropical threats the next 7 days.

Confidence

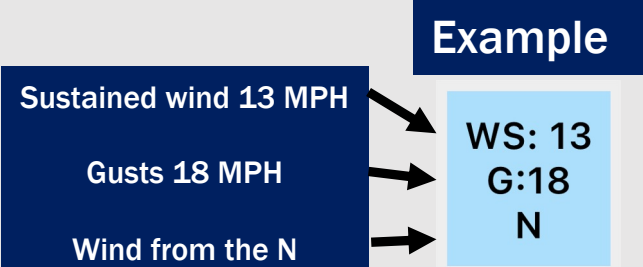
Above
Normal

Below
Normal

The image contains two logos. On the left is the logo for BAM WX.COM, featuring the letters 'BAM' in a stylized font with a black and white swirl, followed by 'WX.COM' in black and 'Weather. Made. Simple.' in blue and red text below it. On the right is the logo for Houston Pilots, featuring a large red 'H' with the text 'Houston Pilots' in white to its right.



Houston Pilots Wind Report



Time	07-17-2022 Sun 3am	07-17-2022 Sun 4am	07-17-2022 Sun 5am	07-17-2022 Sun 6am	07-17-2022 Sun 7am	07-17-2022 Sun 8am	07-17-2022 Sun 9am	07-17-2022 Sun 10am	07-17-2022 Sun 11am	07-17-2022 Sun 12pm	07-17-2022 Sun 1pm	07-17-2022 Sun 2pm	07-17-2022 Sun 3pm	07-17-2022 Sun 4pm	07-17-2022 Sun 5pm	07-17-2022 Sun 6pm	07-17-2022 Sun 7pm	07-17-2022 Sun 8pm	07-17-2022 Sun 9pm	07-17-2022 Sun 10pm	07-17-2022 Sun 11pm	07-18-2022 Mon 12am	07-18-2022 Mon 1am	07-18-2022 Mon 2am	07-18-2022 Mon 3am	07-18-2022 Mon 4am	07-18-2022 Mon 5am	07-18-2022 Mon 6am	07-18-2022 Mon 7am	07-18-2022 Mon 8am	07-18-2022 Mon 9am	07-18-2022 Mon 10am	07-18-2022 Mon 11am	07-18-2022 Mon 12pm	07-18-2022 Mon 1pm	07-18-2022 Mon 2pm		
Houston Pilots N - 610 Bridge	WS: 3 G:9 SSW	WS: 3 G:9 SSW	WS: 2 G:8 SW	WS: 2 G:8 SSW	WS: 1 G:5 SE	WS: 3 G:10 SW	WS: 7 G:11 SW	WS: 6 G:9 SW	WS: 5 G:7 SW	WS: 4 G:5 SW	WS: 3 G:4 SSW	WS: 3 G:4 S	WS: 8 G:10 SE	WS: 11 G:14 SSE	WS: 11 G:14 SSE	WS: 11 G:16 S	WS: 11 G:16 S	WS: 11 G:16 S	WS: 9 G:14 S	WS: 9 G:13 S	WS: 7 G:12 SSW	WS: 6 G:12 SSW	WS: 6 G:11 SSW	WS: 5 G:11 SSW	WS: 5 G:10 SSW	WS: 4 G:9 SSW	WS: 4 G:9 SSW	WS: 4 G:8 SW	WS: 4 G:8 SW	WS: 6 G:11 SW	WS: 8 G:13 SW	WS: 8 G:13 SW	WS: 7 G:11 SW	WS: 7 G:10 SW	WS: 6 G:11 SSW			
Houston Pilots M - Kinder 1	WS: 3 G:10 SSW	WS: 2 G:9 SSW	WS: 2 G:8 SW	WS: 2 G:7 S	WS: 1 G:5 SE	WS: 3 G:10 SW	WS: 7 G:11 SW	WS: 6 G:8 SW	WS: 5 G:6 SW	WS: 4 G:5 SSW	WS: 3 G:4 S	WS: 5 G:6 SSE	WS: 10 G:12 SE	WS: 10 G:13 SSE	WS: 11 G:14 SSE	WS: 11 G:15 S	WS: 12 G:16 S	WS: 11 G:16 S	WS: 9 G:14 S	WS: 9 G:13 S	WS: 8 G:12 SSW	WS: 7 G:12 SSW	WS: 6 G:11 SSW	WS: 5 G:10 SSW	WS: 5 G:9 SSW	WS: 4 G:9 SSW	WS: 4 G:8 SSW	WS: 4 G:8 SW	WS: 4 G:8 SW	WS: 6 G:11 SW	WS: 8 G:12 SW	WS: 8 G:13 SW	WS: 8 G:12 SW	WS: 7 G:11 SW	WS: 7 G:10 SW	WS: 6 G:10 SSW		
Houston Pilots L - Greens Bayou	WS: 4 G:10 SSW	WS: 2 G:8 SSW	WS: 2 G:7 SW	WS: 2 G:6 SSE	WS: 1 G:5 SSE	WS: 4 G:11 SW	WS: 7 G:11 SW	WS: 6 G:8 SW	WS: 4 G:6 SW	WS: 3 G:5 SSW	WS: 3 G:4 S	WS: 7 G:9 SE	WS: 10 G:13 SE	WS: 10 G:13 SSE	WS: 11 G:14 SSE	WS: 11 G:15 SSE	WS: 12 G:16 S	WS: 12 G:16 S	WS: 10 G:16 S	WS: 9 G:14 S	WS: 8 G:13 SSW	WS: 7 G:12 SSW	WS: 6 G:11 SSW	WS: 6 G:10 SSW	WS: 5 G:10 SSW	WS: 4 G:9 SSW	WS: 4 G:8 SSW	WS: 4 G:8 SW	WS: 4 G:8 SW	WS: 6 G:11 SW	WS: 9 G:13 SW	WS: 9 G:13 SW	WS: 8 G:12 SW	WS: 7 G:11 SW	WS: 7 G:10 SSW	WS: 6 G:10 SSW		
Houston Pilots K - Shell Crude	WS: 3 G:10 SSW	WS: 2 G:8 SSW	WS: 2 G:7 SW	WS: 2 G:6 SSE	WS: 1 G:5 S	WS: 4 G:11 SW	WS: 7 G:11 SW	WS: 6 G:8 SW	WS: 4 G:6 SW	WS: 3 G:5 SSW	WS: 3 G:4 SSE	WS: 9 G:11 SE	WS: 11 G:13 SE	WS: 11 G:14 SSE	WS: 12 G:15 SSE	WS: 12 G:16 S	WS: 12 G:16 S	WS: 11 G:16 S	WS: 9 G:14 S	WS: 8 G:13 SSW	WS: 8 G:12 SSW	WS: 7 G:12 SSW	WS: 6 G:11 SSW	WS: 5 G:11 SSW	WS: 4 G:9 SSW	WS: 4 G:9 SSW	WS: 4 G:8 SW	WS: 4 G:8 SW	WS: 6 G:11 SW	WS: 9 G:13 SW	WS: 9 G:13 SW	WS: 8 G:12 SW	WS: 7 G:11 SW	WS: 7 G:10 SSW	WS: 7 G:10 SSW			
Houston Pilots J - Lynchburg Ferries	WS: 3 G:10 SSW	WS: 2 G:9 SSW	WS: 2 G:7 SW	WS: 2 G:6 S	WS: 2 G:6 SSW	WS: 4 G:11 SW	WS: 7 G:11 SW	WS: 5 G:8 SW	WS: 4 G:6 SW	WS: 3 G:5 SSW	WS: 6 G:5 SSE	WS: 10 G:11 SE	WS: 11 G:13 SE	WS: 12 G:15 SSE	WS: 12 G:15 SSE	WS: 13 G:16 S	WS: 13 G:16 S	WS: 11 G:16 S	WS: 10 G:16 S	WS: 9 G:14 S	WS: 8 G:13 SSW	WS: 7 G:12 SSW	WS: 7 G:12 SSW	WS: 7 G:11 SSW	WS: 6 G:11 SSW	WS: 5 G:10 SSW	WS: 5 G:9 SSW	WS: 5 G:8 SSW	WS: 4 G:9 SSW	WS: 6 G:11 SW	WS: 9 G:13 SW	WS: 9 G:13 SW	WS: 8 G:12 SW	WS: 7 G:11 SW	WS: 7 G:10 SSW	WS: 8 G:11 S		
Houston Pilots I - Exxon 3	WS: 4 G:13 SSW	WS: 3 G:12 SW	WS: 2 G:10 SW	WS: 3 G:9 S	WS: 2 G:9 SW	WS: 4 G:11 SW	WS: 6 G:10 SW	WS: 5 G:7 SW	WS: 5 G:6 SSW	WS: 5 G:6 S	WS: 8 G:9 SSE	WS: 11 G:13 SSE	WS: 12 G:15 SSE	WS: 13 G:17 SSE	WS: 13 G:17 SSE	WS: 13 G:16 S	WS: 13 G:17 S	WS: 12 G:16 S	WS: 10 G:16 S	WS: 10 G:14 S	WS: 9 G:13 SSW	WS: 8 G:13 SSW	WS: 7 G:12 SSW	WS: 7 G:12 SSW	WS: 6 G:13 SSW	WS: 5 G:12 SSW	WS: 5 G:11 SSW	WS: 5 G:10 SSW	WS: 5 G:10 SSW	WS: 6 G:12 SW	WS: 9 G:13 SW	WS: 9 G:13 SW	WS: 8 G:12 SW	WS: 8 G:11 SW	WS: 8 G:11 SSW	WS: 9 G:12 S		
Houston Pilots H - Morgans Point	WS: 7 G:16 SSW	WS: 6 G:14 SW	WS: 5 G:13 SSW	WS: 5 G:12 SSW	WS: 5 G:11 WSW	WS: 5 G:11 WSW	WS: 7 G:10 SSW	WS: 8 G:8 SSW	WS: 6 G:6 SSW	WS: 7 G:8 SSE	WS: 10 G:12 SE	WS: 12 G:14 SSE	WS: 14 G:17 SSE	WS: 15 G:19 SSE	WS: 15 G:18 SSE	WS: 17 G:19 S	WS: 13 G:17 S	WS: 13 G:17 S	WS: 12 G:17 S	WS: 11 G:16 SSW	WS: 10 G:15 SSW	WS: 9 G:15 SSW	WS: 8 G:14 SSW	WS: 8 G:14 SSW	WS: 8 G:14 SSW	WS: 7 G:14 SSW	WS: 7 G:13 SW	WS: 6 G:12 SW	WS: 6 G:12 SW	WS: 7 G:13 SW	WS: 9 G:13 SW	WS: 9 G:13 SW	WS: 8 G:12 SSW	WS: 8 G:11 SSW	WS: 8 G:11 SSW	WS: 10 G:13 SSE		
Houston Pilots G - 75/76	WS: 10 G:16 SSW	WS: 10 G:15 SSW	WS: 9 G:14 SW	WS: 8 G:12 SW	WS: 8 G:11 WSW	WS: 7 G:10 WSW	WS: 8 G:10 SW	WS: 6 G:8 SW	WS: 5 G:6 SW	WS: 5 G:6 SE	WS: 12 G:12 SE	WS: 14 G:15 SE	WS: 17 G:18 SSE	WS: 18 G:20 SSE	WS: 18 G:19 SSE	WS: 17 G:19 S	WS: 13 G:17 S	WS: 13 G:17 S	WS: 13 G:18 S	WS: 12 G:17 SSW	WS: 12 G:17 SSW	WS: 11 G:16 SSW	WS: 10 G:16 SSW	WS: 10 G:16 SSW	WS: 9 G:16 SSW	WS: 9 G:15 SSW	WS: 8 G:15 SSW	WS: 8 G:14 SSW	WS: 8 G:14 SSW	WS: 9 G:14 SSW	WS: 9 G:13 SW	WS: 9 G:13 SW	WS: 8 G:12 SSW	WS: 8 G:11 SSW	WS: 8 G:11 SSW	WS: 11 G:13 SSE		
Houston Pilots F - 63/64	WS: 10 G:14 SSW	WS: 10 G:13 SW	WS: 10 G:13 SW	WS: 9 G:12 SW	WS: 8 G:11 SW	WS: 7 G:10 WSW	WS: 8 G:10 SW	WS: 5 G:7 SW	WS: 3 G:6 SW	WS: 7 G:8 SE	WS: 11 G:12 SSE	WS: 14 G:15 SSE	WS: 16 G:17 SSE	WS: 18 G:19 SSE	WS: 18 G:19 S	WS: 13 G:16 S	WS: 13 G:17 S	WS: 13 G:18 S	WS: 13 G:17 SSW	WS: 12 G:17 SSW	WS: 12 G:17 SSW	WS: 12 G:17 SSW	WS: 11 G:16 SSW	WS: 11 G:16 SSW	WS: 10 G:16 SSW	WS: 10 G:16 SSW	WS: 9 G:16 SW	WS: 9 G:16 SW	WS: 9 G:15 SW	WS: 9 G:15 SW	WS: 9 G:14 SW	WS: 9 G:13 SW	WS: 9 G:13 SW	WS: 8 G:12 SSW	WS: 8 G:11 SSW	WS: 9 G:11 SSW		
Houston Pilots E - 51/52	WS: 9 G:13 SW	WS: 9 G:12 SW	WS: 9 G:12 SW	WS: 8 G:10 SW	WS: 8 G:10 WSW	WS: 6 G:8 WSW	WS: 7 G:9 SW	WS: 4 G:6 SW	WS: 5 G:6 SSE	WS: 5 G:7 SSE	WS: 11 G:11 SSE	WS: 15 G:16 SSE	WS: 17 G:19 S	WS: 17 G:19 S	WS: 13 G:16 S	WS: 14 G:17 S	WS: 13 G:17 S	WS: 13 G:17 SSW	WS: 13 G:17 SSW	WS: 12 G:17 SSW	WS: 12 G:17 SSW	WS: 12 G:17 SSW	WS: 12 G:17 SSW	WS: 11 G:16 SSW	WS: 11 G:16 SSW	WS: 10 G:16 SSW	WS: 10 G:16 SSW	WS: 10 G:15 SW	WS: 10 G:15 SW	WS: 9 G:14 SW	WS: 9 G:14 SW	WS: 9 G:13 SW	WS: 9 G:12 SW	WS: 9 G:12 SSW	WS: 10 G:12 S	WS: 10 G:12 S	WS: 12 G:14 S	
Houston Pilots D - 37/38	WS: 9 G:12 SSW	WS: 9 G:12 SSW	WS: 9 G:12 SSW	WS: 7 G:9 SW	WS: 7 G:9 SW	WS: 6 G:8 SW	WS: 6 G:8 SW	WS: 5 G:6 SSW	WS: 7 G:8 S	WS: 8 G:8 S	WS: 11 G:11 SSE	WS: 13 G:13 S	WS: 14 G:15 S	WS: 16 G:17 S	WS: 17 G:18 S	WS: 13 G:15 S	WS: 13 G:16 S	WS: 13 G:17 S	WS: 13 G:17 SSW	WS: 13 G:17 SSW	WS: 13 G:17 SSW	WS: 13 G:17 SSW	WS: 12 G:17 SSW	WS: 12 G:17 SSW	WS: 11 G:16 SSW	WS: 11 G:16 SSW	WS: 11 G:15 SW	WS: 10 G:15 SW	WS: 10 G:15 SW	WS: 10 G:14 SW	WS: 10 G:14 SW	WS: 9 G:13 SW	WS: 9 G:13 SW	WS: 10 G:13 SSW	WS: 11 G:14 S	WS: 11 G:14 S	WS: 13 G:15 S	
Houston Pilots C - 25/26	WS: 9 G:12 SSW	WS: 9 G:12 SSW	WS: 8 G:12 SW	WS: 6 G:9 SW	WS: 6 G:9 SW	WS: 5 G:7 SSW	WS: 6 G:8 SSW	WS: 6 G:7 SSW	WS: 7 G:8 SSW	WS: 8 G:8 S	WS: 11 G:11 S	WS: 12 G:13 S	WS: 13 G:14 S	WS: 15 G:16 S	WS: 15 G:17 S	WS: 12 G:15 S	WS: 13 G:16 S	WS: 13 G:17 S	WS: 13 G:17 SSW	WS: 13 G:17 SSW	WS: 13 G:17 SSW	WS: 13 G:17 SSW	WS: 12 G:16 SSW	WS: 12 G:16 SSW	WS: 12 G:16 SSW	WS: 11 G:15 SSW	WS: 11 G:15 SSW	WS: 10 G:14 SW	WS: 10 G:14 SW	WS: 10 G:14 SW	WS: 10 G:14 SW	WS: 9 G:13 SW	WS: 9 G:13 SW	WS: 10 G:14 SSW	WS: 10 G:14 SSW	WS: 11 G:15 SSW	WS: 12 G:15 SSW	
Houston Pilots B - 11/12	WS: 9 G:12 SSW	WS: 9 G:12 SSW	WS: 8 G:11 SW	WS: 7 G:9 SW	WS: 6 G:8 SW	WS: 5 G:7 SSW	WS: 7 G:8 SSW	WS: 6 G:7 SSW	WS: 7 G:8 SSW	WS: 8 G:9 S	WS: 10 G:11 S	WS: 12 G:13 S	WS: 13 G:14 S	WS: 14 G:16 S	WS: 15 G:17 S	WS: 12 G:14 S	WS: 13 G:15 S	WS: 13 G:16 S	WS: 13 G:17 SSW	WS: 13 G:17 SSW	WS: 13 G:17 SSW	WS: 13 G:17 SSW	WS: 13 G:17 SSW	WS: 12 G:16 SSW	WS: 12 G:16 SSW	WS: 11 G:15 SSW	WS: 11 G:15 SSW	WS: 10 G:14 SW	WS: 10 G:14 SW	WS: 11 G:14 SW	WS: 10 G:14 SW	WS: 10 G:14 SW	WS: 10 G:14 SW	WS: 10 G:14 SW	WS: 11 G:15 SSW	WS: 11 G:14 SW	WS: 11 G:14 SW	WS: 12 G:15 SSW
Houston Pilots A - 1 & 2 Bravo	WS: 12 G:12 SSW	WS: 11 G:12 SW	WS: 11 G:11 SW	WS: 9 G:9 SW	WS: 8 G:8 SSW	WS: 7 G:7 SSW	WS: 8 G:8 SSW	WS: 7 G:7 SSW	WS: 7 G:7 SSW	WS: 8 G:8 SSW	WS: 9 G:9 SSW	WS: 11 G:11 S	WS: 12 G:12 S	WS: 14 G:15 S	WS: 15 G:16 S	WS: 12 G:13 S	WS: 14 G:16 S	WS: 14 G:16 S	WS: 14 G:17 SSW	WS: 14 G:17 SSW	WS: 15 G:18 SSW	WS: 15 G:18 SSW	WS: 15 G:18 SSW	WS: 14 G:17 SSW	WS: 14 G:17 SSW	WS: 13 G:17 SSW	WS: 13 G:17 SSW	WS: 12 G:16 SW	WS: 12 G:16 SW	WS: 11 G:15 SW	WS: 11 G:15 SW	WS: 11 G:14 SW	WS: 11 G:14 SW	WS: 11 G:14 SW	WS: 11 G:14 SW	WS: 11 G:14 SW	WS: 12 G:15 SSW	

See slides below for official thoughts on winds.

Houston Pilots: Sun. 7/17/2022

Forecast Discussion

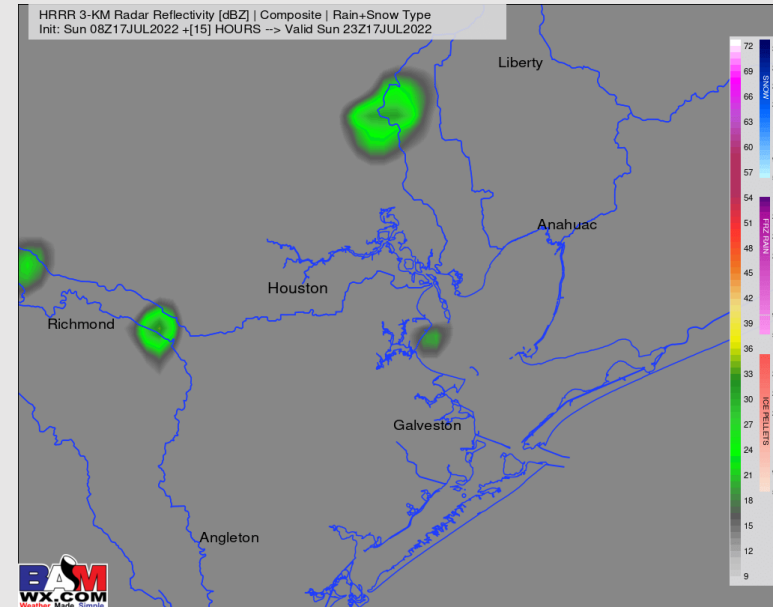
Precip: Very isolated chances, near 10-20%, of a brief passing shower/ storm still remains possible from 1 PM – 7 PM. Mostly dry conditions are anticipated throughout the day. Coverage is expected to stay rather hit and miss.

Wind: Winds look to continue out of the SW sustained around 5 – 10 MPH. Winds look to pick up into the afternoon and move back out of the SSW, especially after 2-3 PM back to 10 – 15 MPH with gusts to 15 – 20 MPH. While not sustained, there may be a few instances between 4-8 PM of sustained winds reaching 15-20 MPH between Morgan's Point & the Boarding station.

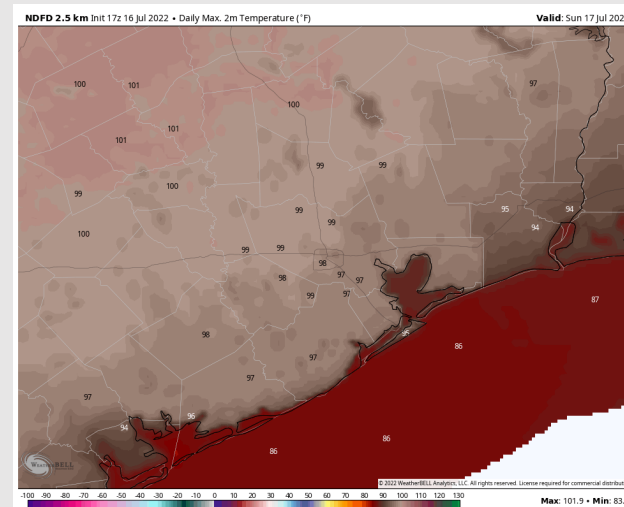
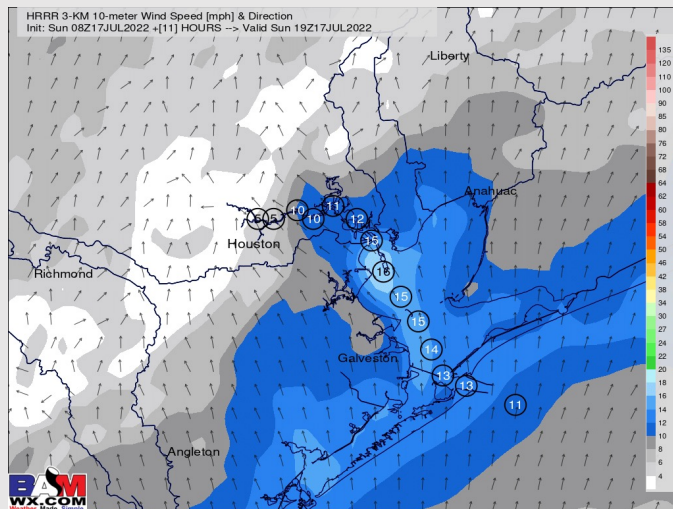
Temps: Highs will reach the upper 80s to mid 90s F for most stations with "feels-like" temperatures nearing 100 F. Warmer temperatures expected further inland towards the HOU metro.

Visibility: Not anticipating any fog concerns at this time.

Precip Forecast: 5 PM CT



Sustained
Winds
2 PM CT



High Temps

Houston Pilots: Mon. 7/18/2022

Forecast Discussion

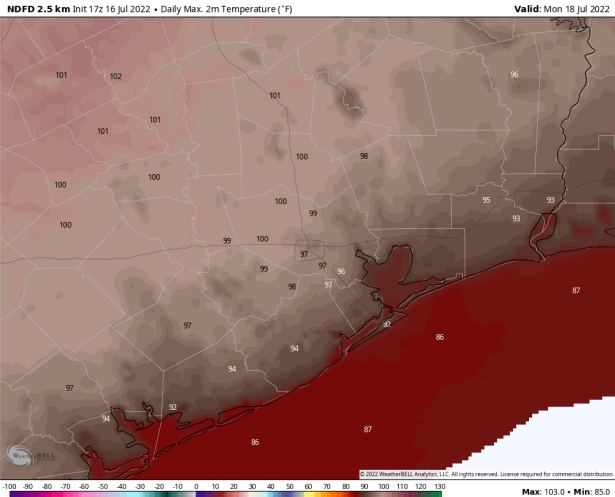
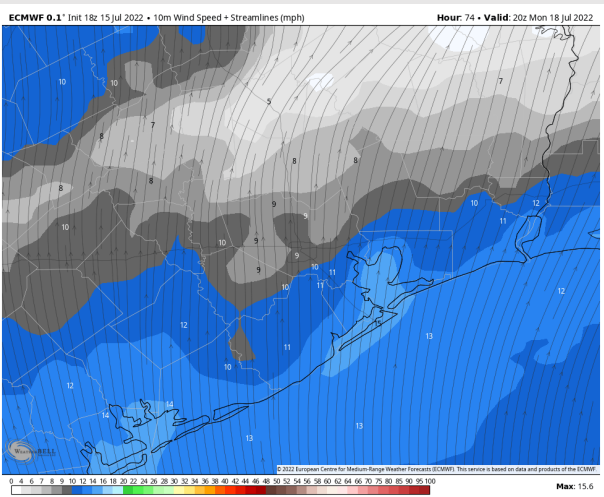
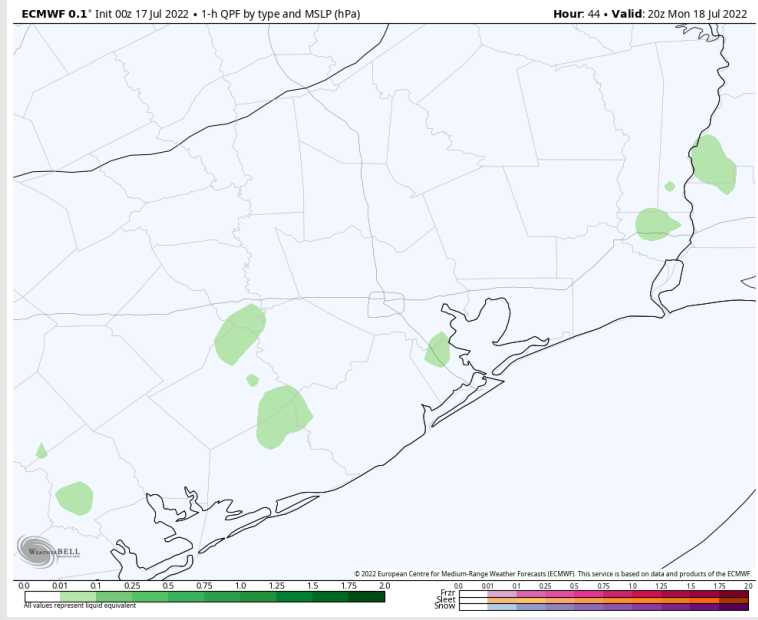
Precip: Favoring a dry day on Monday with an outside ~10% chance for an isolated pop-up around the area from 1 – 8 PM.

Wind: Winds in the AM hours likely weaken a touch to 8 – 13 MPH sustained out of the SW before picking up into the afternoon from the SSW around 13 - 18 MPH (gusts to 18 – 23 MPH) where they should continue for the rest of the day.

Temps: Highs likely reach the upper 80s to low 90s F for most stations. “Feels-like” likely get into the upper 90’s F / lower 100’s F.

Visibility: Not anticipating any fog concerns at this time.

Precip Forecast: 4 PM CT



Wind Speed
3 PM CT

High Temps
Monday

Houston Pilots: Tue. 7/19/2022

Forecast Discussion

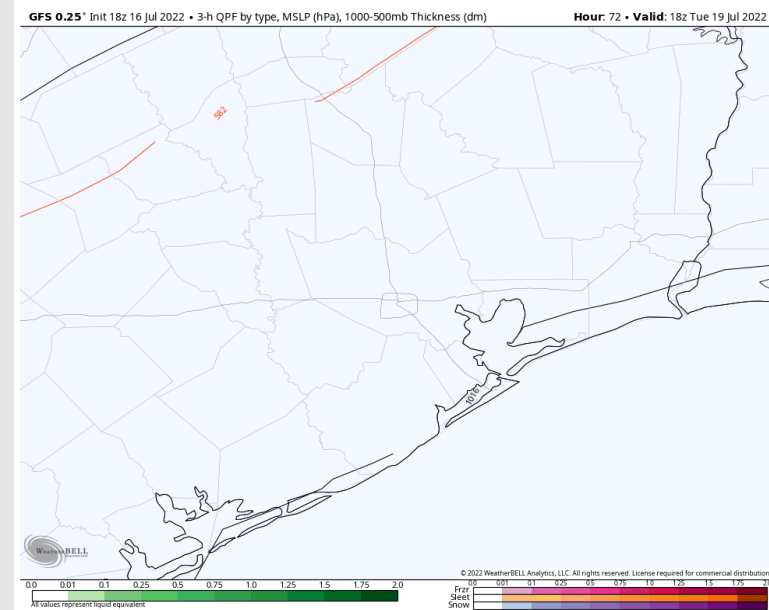
Precip: Anticipating dry conditions for Tuesday.

Wind: Winds look to be 13-18 MPH sustained out of the SW throughout Tuesday with gusts to 25 MPH possible

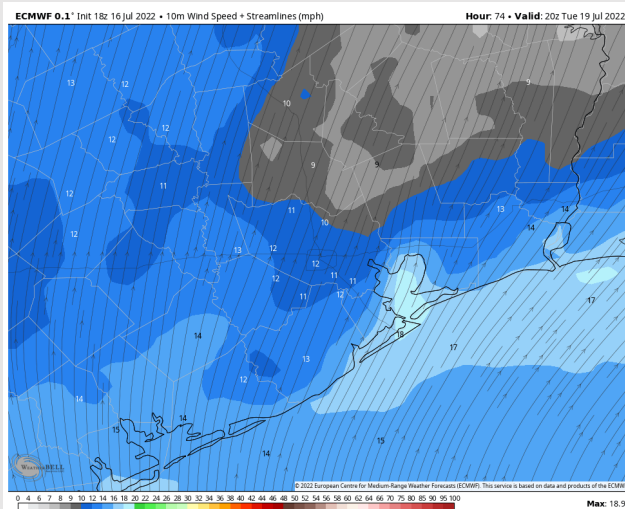
Temps: Temps likely reach the upper 80s to low 90s F, with stations north of Morgan's Point likely into the mid to upper 90s F.

Visibility: No fog conditions anticipated at this time.

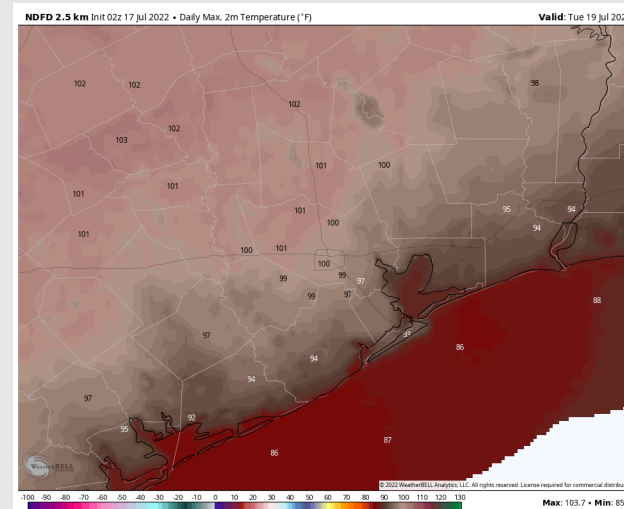
Precip Forecast: 1 PM CT



Sustained
Winds
4 PM CT



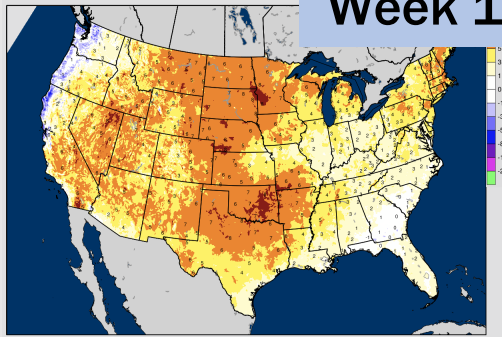
High Temps
Tuesday



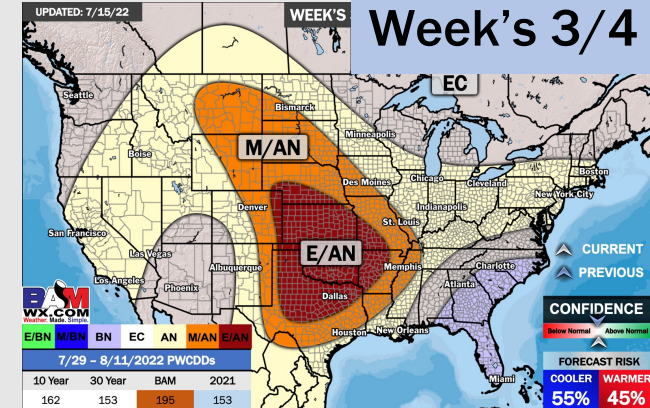
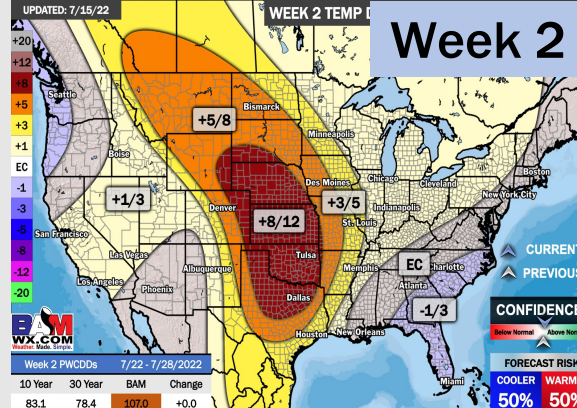
Houston Pilots: 7/17/22

BAMcast Average Temperature Anomaly [°F]
7-DAY AVG for Sun 17JUL2022 thru Sat 23JUL2022 Days 1 to 7

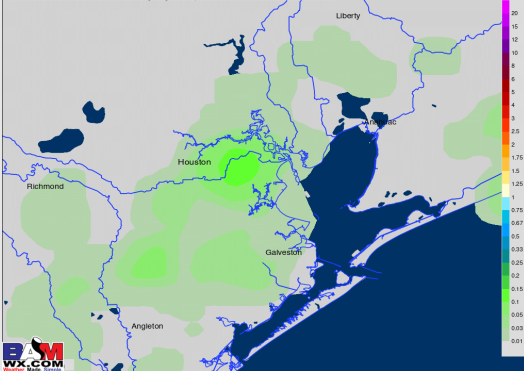
Week 1



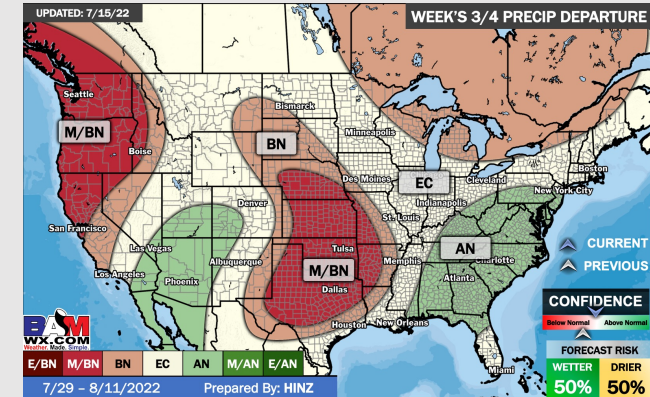
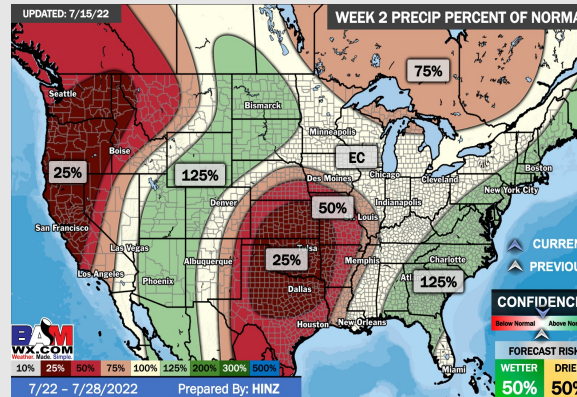
BAM
WX.COM



NWS WPC Total Precipitation [inches]
Accum thru Sat 18/23JUL2022 «168»hours | Init: 18/21JUL2022



BAM
WX.COM



- Only very minor precipitation chances the next 7 days as the weather pattern turns back warmer and quieter.
- Week 2 likely features above normal risks for temperatures and below normal precipitation risks. Heat during this time will likely be more pronounced vs the next 7 days.
- The weeks ³/₄ timeframe into August looks to feature normal temperatures and normal risks for precip.