

# Houston Pilots Forecast Package

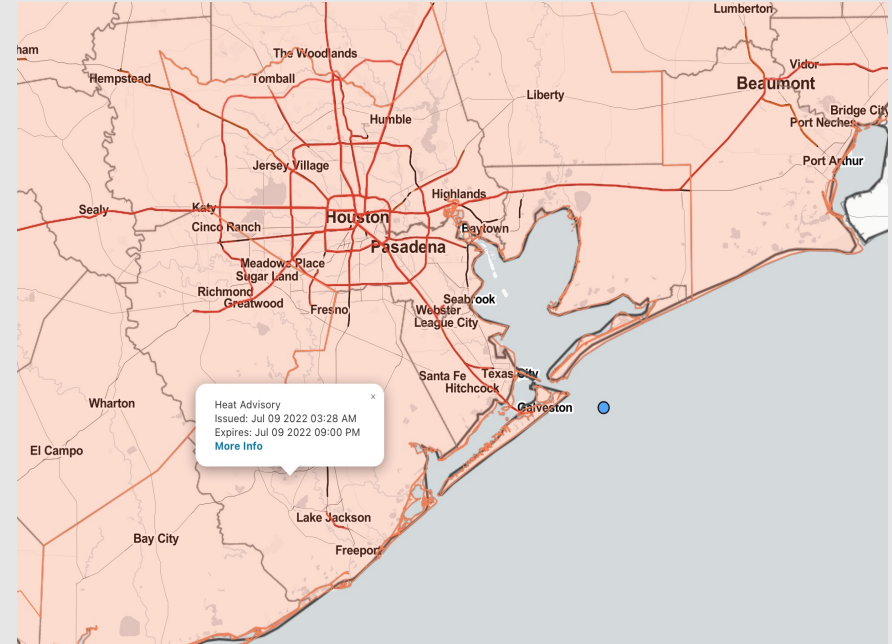
Houston Pilots

Updated: 7:15 AM CT  
Sunday, July 10<sup>th</sup>, 2022

Forecaster: Alyssa McClung

## Weather Headlines

- Anticipating scattered chances for showers/storms over the next few days with boundaries coming through.
- Flow will stay predominately out of the S/SW over the next few days.
- No tropical threats expected over the next ~7 days.

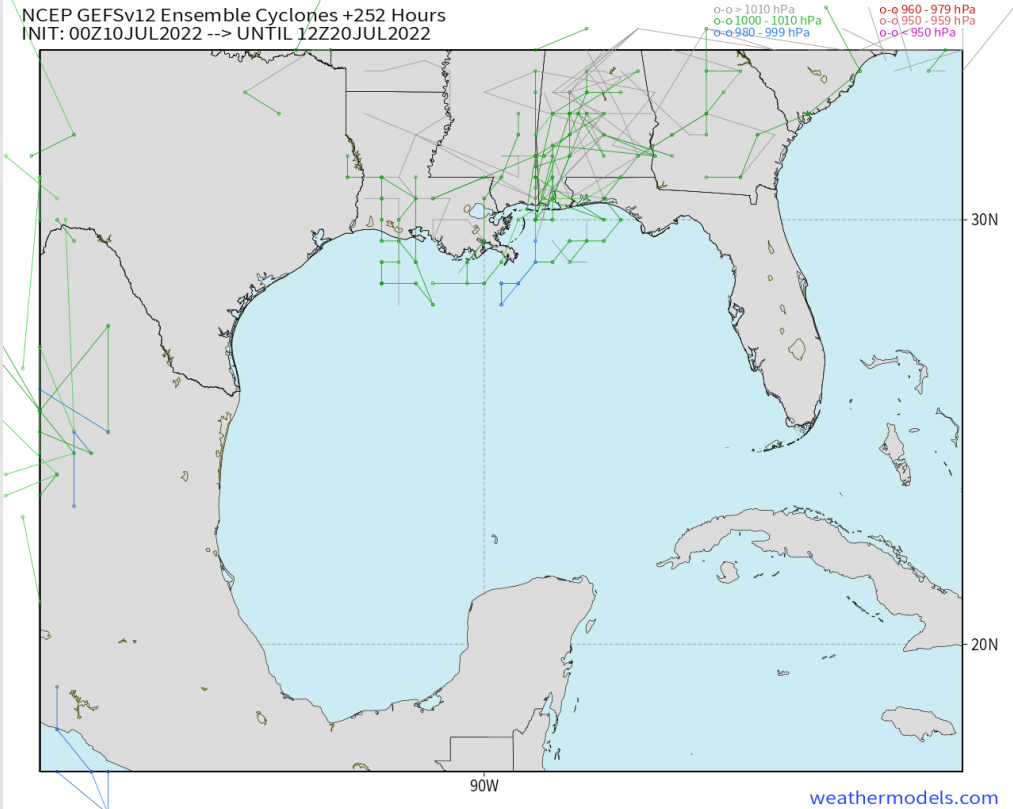


**Radar/ NWS Alerts: 7:15 AM CT**



As always, please do not hesitate to reach out to us with any forecast questions via the chat option on the Weather Porthole or our on-call number, **(317)-560-8122** press 1 for forecast questions.

## Various model tracks next 7 days



~Next weekend, latest guidance is trying to develop a low pressure system in the Northern Gulf. While details are still unknown on formation/timing/potential impacts...etc, it will be worth keeping eyes on this over the coming days

### Confidence



Above Normal      Below Normal



# Houston Pilots Wind Report



Time	07-09-2022 Sat 5am	07-09-2022 Sat 6am	07-09-2022 Sat 7am	07-09-2022 Sat 8am	07-09-2022 Sat 9am	07-09-2022 Sat 10am	07-09-2022 Sat 11am	07-09-2022 Sat 12pm	07-09-2022 Sat 1pm	07-09-2022 Sat 2pm	07-09-2022 Sat 3pm	07-09-2022 Sat 4pm	07-09-2022 Sat 5pm	07-09-2022 Sat 6pm	07-09-2022 Sat 7pm	07-09-2022 Sat 8pm	07-09-2022 Sat 9pm	07-09-2022 Sat 10pm	07-09-2022 Sat 11pm	07-10-2022 Sun 12am	07-10-2022 Sun 1am	07-10-2022 Sun 2am	07-10-2022 Sun 3am	07-10-2022 Sun 4am	07-10-2022 Sun 5am	07-10-2022 Sun 6am	07-10-2022 Sun 7am	07-10-2022 Sun 8am	07-10-2022 Sun 9am	07-10-2022 Sun 10am	07-10-2022 Sun 11am	07-10-2022 Sun 12pm	07-10-2022 Sun 1pm	07-10-2022 Sun 2pm	07-10-2022 Sun 3pm	07-10-2022 Sun 4pm										
Houston Pilots N - 610 Bridge	WS: 3 G:10 S	WS: 3 G:10 SW	WS: 3 G:11 SW	WS: 6 G:15 SW	WS: 8 G:13 WSW	WS: 7 G:10 WSW	WS: 6 G:7 WSW	WS: 4 G:5 WSW	WS: 3 G:5 WSW	WS: 2 G:4 W	WS: 2 G:4 SSE	WS: 4 G:7 ESE	WS: 9 G:11 SE	WS: 10 G:13 SSE	WS: 11 G:15 SSE	WS: 11 G:16 S	WS: 9 G:16 S	WS: 9 G:15 SSW	WS: 8 G:14 SSW	WS: 7 G:11 SSW	WS: 6 G:10 SSW	WS: 6 G:10 SW	WS: 6 G:10 SW	WS: 6 G:11 SW	WS: 5 G:12 SW	WS: 5 G:11 WSW	WS: 5 G:11 WSW	WS: 7 G:13 WSW	WS: 8 G:15 WSW	WS: 8 G:14 WSW	WS: 7 G:13 WSW	WS: 8 G:14 WSW	WS: 8 G:14 WSW	WS: 8 G:13 WSW	WS: 6 G:12 WSW	WS: 6 G:12 WSW	WS: 4 G:11 WSW	WS: 5 G:11 WSW	WS: 5 G:11 SW							
Houston Pilots M - Kinder 1	WS: 3 G:10 S	WS: 3 G:10 SW	WS: 3 G:11 SW	WS: 6 G:15 SW	WS: 8 G:13 WSW	WS: 7 G:10 WSW	WS: 5 G:7 WSW	WS: 4 G:5 WSW	WS: 2 G:4 WSW	WS: 1 G:4 WSW	WS: 2 G:4 ESE	WS: 6 G:8 ESE	WS: 9 G:11 SE	WS: 10 G:13 SSE	WS: 11 G:15 SSE	WS: 11 G:16 S	WS: 9 G:16 S	WS: 9 G:15 SSW	WS: 8 G:13 SSW	WS: 7 G:11 SSW	WS: 6 G:10 SSW	WS: 6 G:10 SW	WS: 6 G:10 SW	WS: 6 G:11 SW	WS: 5 G:12 SW	WS: 5 G:11 WSW	WS: 5 G:11 WSW	WS: 7 G:13 WSW	WS: 8 G:14 WSW	WS: 8 G:14 WSW	WS: 7 G:13 WSW	WS: 8 G:14 WSW	WS: 8 G:14 WSW	WS: 8 G:13 WSW	WS: 6 G:12 WSW	WS: 6 G:12 WSW	WS: 5 G:11 WSW	WS: 5 G:11 WSW	WS: 5 G:11 SW							
Houston Pilots L - Greens Bayou	WS: 4 G:10 SSW	WS: 3 G:10 SW	WS: 3 G:11 SW	WS: 6 G:16 SW	WS: 8 G:13 WSW	WS: 7 G:10 WSW	WS: 5 G:7 WSW	WS: 4 G:5 WSW	WS: 2 G:4 WSW	WS: 1 G:4 WSW	WS: 2 G:4 ESE	WS: 6 G:8 ESE	WS: 9 G:11 SE	WS: 10 G:13 SSE	WS: 11 G:15 SSE	WS: 10 G:16 S	WS: 9 G:16 S	WS: 9 G:15 SSW	WS: 8 G:13 SSW	WS: 7 G:11 SSW	WS: 7 G:10 SSW	WS: 6 G:10 SW	WS: 6 G:10 SW	WS: 6 G:11 SW	WS: 5 G:12 SW	WS: 5 G:11 WSW	WS: 5 G:11 WSW	WS: 7 G:13 WSW	WS: 8 G:14 WSW	WS: 8 G:14 WSW	WS: 7 G:13 WSW	WS: 8 G:14 WSW	WS: 8 G:14 WSW	WS: 8 G:13 WSW	WS: 6 G:12 WSW	WS: 6 G:12 WSW	WS: 5 G:11 WSW	WS: 5 G:11 WSW	WS: 5 G:11 SW							
Houston Pilots K - Shell Crude	WS: 3 G:9 SSW	WS: 3 G:9 SW	WS: 3 G:10 SW	WS: 6 G:15 SW	WS: 8 G:13 WSW	WS: 8 G:11 WSW	WS: 6 G:8 WSW	WS: 4 G:5 WSW	WS: 2 G:4 WSW	WS: 2 G:4 SSW	WS: 6 G:8 ESE	WS: 10 G:12 SE	WS: 10 G:13 SE	WS: 10 G:13 SSE	WS: 11 G:15 SSE	WS: 10 G:16 S	WS: 9 G:16 S	WS: 9 G:15 SSW	WS: 7 G:14 SSW	WS: 7 G:11 SSW	WS: 6 G:10 SSW	WS: 6 G:10 SW	WS: 6 G:10 SW	WS: 5 G:11 SW	WS: 5 G:11 SW	WS: 5 G:11 WSW	WS: 5 G:11 WSW	WS: 7 G:13 WSW	WS: 8 G:14 WSW	WS: 8 G:14 WSW	WS: 7 G:13 WSW	WS: 8 G:14 WSW	WS: 8 G:14 WSW	WS: 8 G:13 WSW	WS: 6 G:12 WSW	WS: 6 G:12 WSW	WS: 5 G:11 WSW	WS: 5 G:11 WSW	WS: 5 G:11 SW							
Houston Pilots J - Lynchburg Ferries	WS: 4 G:9 SSW	WS: 3 G:9 SW	WS: 3 G:10 SW	WS: 6 G:15 SW	WS: 8 G:13 WSW	WS: 8 G:11 WSW	WS: 6 G:8 WSW	WS: 4 G:5 WSW	WS: 2 G:4 WSW	WS: 2 G:4 SSW	WS: 6 G:8 ESE	WS: 11 G:11 SSE	WS: 11 G:14 SSE	WS: 11 G:14 SSE	WS: 11 G:16 SSE	WS: 11 G:16 S	WS: 9 G:15 S	WS: 8 G:14 SSW	WS: 7 G:13 SSW	WS: 7 G:11 SSW	WS: 6 G:10 SSW	WS: 6 G:10 SW	WS: 6 G:10 SW	WS: 6 G:11 SW	WS: 5 G:12 SW	WS: 5 G:11 WSW	WS: 5 G:11 WSW	WS: 7 G:13 WSW	WS: 8 G:14 WSW	WS: 8 G:14 WSW	WS: 7 G:13 WSW	WS: 8 G:14 WSW	WS: 8 G:14 WSW	WS: 8 G:13 WSW	WS: 6 G:12 WSW	WS: 6 G:12 WSW	WS: 5 G:11 WSW	WS: 5 G:11 WSW	WS: 5 G:11 SW							
Houston Pilots I - Exxon 3	WS: 4 G:11 SSW	WS: 3 G:11 WSW	WS: 3 G:12 WSW	WS: 6 G:15 SW	WS: 8 G:13 WSW	WS: 8 G:11 WSW	WS: 6 G:8 WSW	WS: 5 G:5 SSW	WS: 3 G:4 SSW	WS: 6 G:10 SSW	WS: 12 G:12 SSE	WS: 12 G:15 SSE	WS: 12 G:16 SSE	WS: 12 G:17 SSE	WS: 12 G:18 S	WS: 11 G:16 S	WS: 10 G:16 S	WS: 10 G:15 SSW	WS: 8 G:13 SSW	WS: 7 G:12 SSW	WS: 7 G:11 SSW	WS: 7 G:11 SW	WS: 7 G:12 SW	WS: 6 G:13 SW	WS: 6 G:12 SW	WS: 6 G:12 WSW	WS: 6 G:12 WSW	WS: 7 G:13 WSW	WS: 8 G:14 WSW	WS: 8 G:14 WSW	WS: 7 G:13 WSW	WS: 8 G:14 WSW	WS: 8 G:14 WSW	WS: 8 G:13 WSW	WS: 6 G:12 WSW	WS: 6 G:12 WSW	WS: 5 G:11 WSW	WS: 5 G:11 WSW	WS: 5 G:11 SW							
Houston Pilots H - Morgans Point	WS: 6 G:13 SSW	WS: 6 G:13 WSW	WS: 6 G:13 WSW	WS: 7 G:15 WSW	WS: 9 G:13 SW	WS: 8 G:11 WSW	WS: 6 G:8 W	WS: 5 G:6 S	WS: 7 G:10 S	WS: 7 G:10 SE	WS: 12 G:14 SE	WS: 14 G:14 SSE	WS: 15 G:15 SSE	WS: 15 G:16 SSE	WS: 13 G:18 S	WS: 13 G:18 S	WS: 12 G:17 S	WS: 11 G:16 SSW	WS: 10 G:15 SSW	WS: 9 G:13 SSW	WS: 8 G:13 SSW	WS: 8 G:13 SW	WS: 8 G:14 SW	WS: 8 G:14 WSW	WS: 8 G:14 WSW	WS: 7 G:14 WSW	WS: 7 G:14 WSW	WS: 7 G:14 WSW	WS: 8 G:15 WSW	WS: 8 G:15 WSW	WS: 7 G:14 WSW	WS: 8 G:15 WSW	WS: 8 G:15 WSW	WS: 8 G:14 WSW	WS: 6 G:12 WSW	WS: 6 G:12 WSW	WS: 5 G:11 WSW	WS: 5 G:11 WSW	WS: 5 G:11 SW							
Houston Pilots G - 75/76	WS: 6 G:13 SSW	WS: 9 G:13 WSW	WS: 9 G:14 WSW	WS: 9 G:15 WSW	WS: 10 G:14 WSW	WS: 9 G:11 WSW	WS: 6 G:9 SW	WS: 5 G:7 SW	WS: 3 G:5 SE	WS: 11 G:12 SE	WS: 15 G:16 SE	WS: 17 G:17 SE	WS: 17 G:19 SE	WS: 17 G:18 S	WS: 16 G:18 S	WS: 16 G:19 S	WS: 13 G:18 S	WS: 12 G:17 SSW	WS: 11 G:16 SSW	WS: 10 G:15 SSW	WS: 10 G:15 SW	WS: 10 G:15 SW	WS: 10 G:16 SW	WS: 10 G:16 SW	WS: 10 G:16 SW	WS: 9 G:15 WSW	WS: 9 G:15 WSW	WS: 9 G:15 WSW	WS: 9 G:16 WSW	WS: 9 G:16 WSW	WS: 9 G:16 WSW	WS: 9 G:16 WSW	WS: 8 G:15 WSW	WS: 8 G:15 WSW	WS: 6 G:13 WSW	WS: 6 G:13 WSW	WS: 5 G:11 WSW	WS: 5 G:11 WSW	WS: 5 G:11 SW							
Houston Pilots F - 63/64	WS: 9 G:13 SSW	WS: 9 G:12 WSW	WS: 10 G:14 WSW	WS: 10 G:14 WSW	WS: 11 G:15 WSW	WS: 9 G:11 WSW	WS: 7 G:9 SSW	WS: 3 G:7 SSW	WS: 7 G:8 ESE	WS: 7 G:8 ESE	WS: 14 G:15 SE	WS: 14 G:18 SE	WS: 17 G:18 SE	WS: 16 G:19 S	WS: 16 G:19 S	WS: 14 G:18 S	WS: 13 G:18 SSW	WS: 12 G:17 SSW	WS: 12 G:16 SSW	WS: 12 G:16 SSW	WS: 11 G:15 SSW	WS: 11 G:16 SW	WS: 11 G:16 SW	WS: 11 G:16 SW	WS: 11 G:16 SW	WS: 11 G:16 SW	WS: 11 G:16 SW	WS: 10 G:16 WSW	WS: 10 G:16 WSW	WS: 10 G:16 WSW	WS: 10 G:16 WSW	WS: 9 G:15 WSW	WS: 9 G:15 WSW	WS: 8 G:13 WSW	WS: 8 G:13 WSW	WS: 7 G:11 WSW	WS: 7 G:11 WSW	WS: 5 G:11 WSW	WS: 5 G:11 WSW	WS: 5 G:11 SW						
Houston Pilots E - 51/52	WS: 7 G:12 SSW	WS: 8 G:12 WSW	WS: 9 G:12 WSW	WS: 10 G:14 WSW	WS: 10 G:14 WSW	WS: 9 G:11 WSW	WS: 7 G:9 SSW	WS: 4 G:7 SSW	WS: 6 G:7 SE	WS: 9 G:8 SE	WS: 12 G:13 SSE	WS: 15 G:16 SSE	WS: 17 G:17 S	WS: 17 G:18 S	WS: 17 G:19 S	WS: 17 G:20 S	WS: 14 G:18 S	WS: 14 G:18 SSW	WS: 13 G:17 SSW	WS: 12 G:16 SSW	WS: 12 G:16 SSW	WS: 12 G:16 SW	WS: 11 G:16 SW	WS: 11 G:16 SW	WS: 11 G:16 SW	WS: 11 G:16 SW	WS: 11 G:16 SW	WS: 11 G:16 WSW	WS: 10 G:16 WSW	WS: 10 G:16 WSW	WS: 9 G:15 W	WS: 8 G:13 WSW	WS: 8 G:13 WSW	WS: 7 G:11 WSW	WS: 6 G:10 WSW	WS: 6 G:10 WSW	WS: 5 G:11 WSW	WS: 5 G:11 WSW	WS: 5 G:11 SW							
Houston Pilots D - 37/38	WS: 7 G:12 SSW	WS: 7 G:11 SW	WS: 8 G:12 WSW	WS: 9 G:13 WSW	WS: 10 G:13 WSW	WS: 9 G:11 WSW	WS: 8 G:9 SSW	WS: 6 G:7 SSW	WS: 5 G:5 SSW	WS: 7 G:8 SSE	WS: 12 G:13 S	WS: 14 G:14 S	WS: 15 G:15 S	WS: 16 G:16 S	WS: 16 G:17 S	WS: 17 G:18 S	WS: 15 G:18 SSW	WS: 14 G:18 SSW	WS: 13 G:17 SSW	WS: 13 G:17 SSW	WS: 12 G:16 SSW	WS: 12 G:16 SW	WS: 12 G:16 SW	WS: 12 G:16 SW	WS: 12 G:16 SW	WS: 12 G:16 SW	WS: 12 G:16 SW	WS: 12 G:16 WSW	WS: 11 G:16 WSW	WS: 11 G:16 WSW	WS: 11 G:16 WSW	WS: 11 G:16 WSW	WS: 10 G:15 WSW	WS: 10 G:15 WSW	WS: 8 G:13 WSW	WS: 8 G:13 WSW	WS: 7 G:11 WSW	WS: 7 G:11 WSW	WS: 5 G:11 WSW	WS: 5 G:11 WSW	WS: 5 G:11 SW					
Houston Pilots C - 25/26	WS: 8 G:12 SSW	WS: 7 G:11 SW	WS: 7 G:12 WSW	WS: 7 G:12 WSW	WS: 9 G:12 WSW	WS: 10 G:11 WSW	WS: 9 G:10 SSW	WS: 7 G:8 SSW	WS: 7 G:8 SSW	WS: 9 G:10 S	WS: 11 G:12 S	WS: 13 G:14 S	WS: 13 G:15 S	WS: 15 G:17 S	WS: 16 G:19 SSW	WS: 16 G:19 SSW	WS: 14 G:18 SSW	WS: 13 G:18 SSW	WS: 13 G:17 SSW	WS: 13 G:17 SSW	WS: 12 G:16 SSW	WS: 12 G:16 SW	WS: 12 G:16 SW	WS: 12 G:16 SW	WS: 12 G:16 SW	WS: 12 G:16 SW	WS: 12 G:16 SW	WS: 12 G:16 WSW	WS: 11 G:16 WSW	WS: 11 G:16 WSW	WS: 11 G:16 WSW	WS: 11 G:16 WSW	WS: 10 G:15 WSW	WS: 10 G:15 WSW	WS: 8 G:13 WSW	WS: 8 G:13 WSW	WS: 7 G:11 WSW	WS: 7 G:11 WSW	WS: 5 G:11 WSW	WS: 5 G:11 WSW	WS: 5 G:11 SW					
Houston Pilots B - 11/12	WS: 9 G:12 SSW	WS: 8 G:11 SW	WS: 8 G:12 WSW	WS: 8 G:12 WSW	WS: 9 G:13 WSW	WS: 10 G:11 WSW	WS: 9 G:10 SSW	WS: 9 G:9 SSW	WS: 9 G:9 SSW	WS: 11 G:12 S	WS: 12 G:13 S	WS: 14 G:14 S	WS: 15 G:15 S	WS: 16 G:17 S	WS: 16 G:19 SSW	WS: 15 G:18 SSW	WS: 14 G:18 SSW	WS: 13 G:17 SSW	WS: 13 G:17 SSW	WS: 13 G:17 SSW	WS: 13 G:17 SW	WS: 13 G:17 SW	WS: 13 G:17 SW	WS: 13 G:17 SW	WS: 13 G:17 SW	WS: 13 G:17 SW	WS: 13 G:17 SW	WS: 12 G:17 WSW	WS: 12 G:17 WSW	WS: 12 G:17 WSW	WS: 12 G:17 WSW	WS: 11 G:16 WSW	WS: 11 G:16 WSW	WS: 9 G:14 WSW	WS: 9 G:14 WSW	WS: 8 G:13 WSW	WS: 8 G:13 WSW	WS: 7 G:11 WSW	WS: 7 G:11 WSW	WS: 5 G:11 WSW	WS: 5 G:11 WSW	WS: 5 G:11 SW				
Houston Pilots A - 1 & 2 Bravo	WS: 11 G:12 SSW	WS: 11 G:11 SW	WS: 11 G:12 WSW	WS: 11 G:12 WSW	WS: 12 G:13 WSW	WS: 12 G:12 WSW	WS: 11 G:11 WSW	WS: 10 G:10 SSW	WS: 10 G:10 SSW	WS: 11 G:11 SSW	WS: 11 G:11 SSW	WS: 12 G:12 S	WS: 12 G:13 S	WS: 14 G:15 S	WS: 16 G:17 S	WS: 17 G:19 SSW	WS: 15 G:18 SSW	WS: 15 G:18 SSW	WS: 15 G:18 SSW	WS: 15 G:18 SSW	WS: 15 G:18 SSW	WS: 15 G:18 SSW	WS: 15 G:18 SW	WS: 15 G:18 SW	WS: 15 G:18 SW	WS: 15 G:18 SW	WS: 15 G:18 SW	WS: 15 G:18 SW	WS: 15 G:18 WSW	WS: 14 G:17 WSW	WS: 14 G:17 WSW	WS: 14 G:17 WSW	WS: 13 G:17 W	WS: 13 G:17 W	WS: 12 G:16 WSW	WS: 12 G:16 WSW	WS: 11 G:15 WSW	WS: 11 G:15 WSW	WS: 10 G:14 WSW	WS: 10 G:14 WSW	WS: 10 G:14 WSW	WS: 11 G:15 WSW	WS: 11 G:15 WSW	WS: 13 G:16 WSW	WS: 13 G:16 WSW	WS: 15 G:18 SSW

See slides below for official thoughts on winds.

# Houston Pilots: Sun. 7/10/2022



## Forecast Discussion

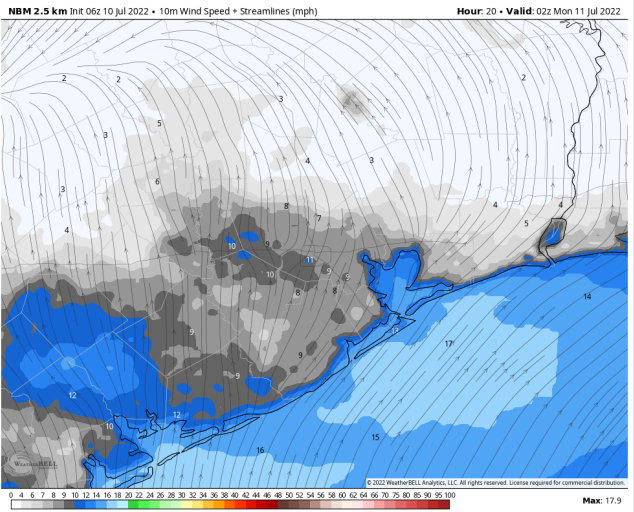
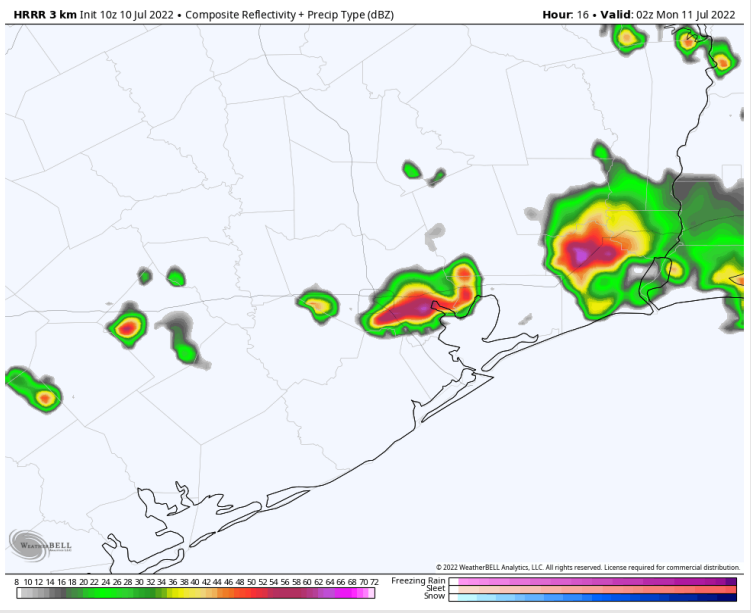
**Precip:** Spotty chances for a few showers look to be possible this morning (~10%), however, best chances for scattered showers and storms look to come in after 5 PM as a boundary filters in from the north. A locally heavy downpour, lightning and hail are possible between 8 PM and midnight.

**Wind:** Sustained winds are 13-18 MPH out of the WSW for the AM hours with gusts to 23 MPH. Winds at northern stations a bit lighter between 8-13 MPH. After 12 PM winds slowly increase to 15-20 MPH sustained out of the SW with some gusts to 28 MPH possible in the afternoon and evening. Wind gusts up to 50 MPH possible under any one of these cells between 8 PM and midnight.

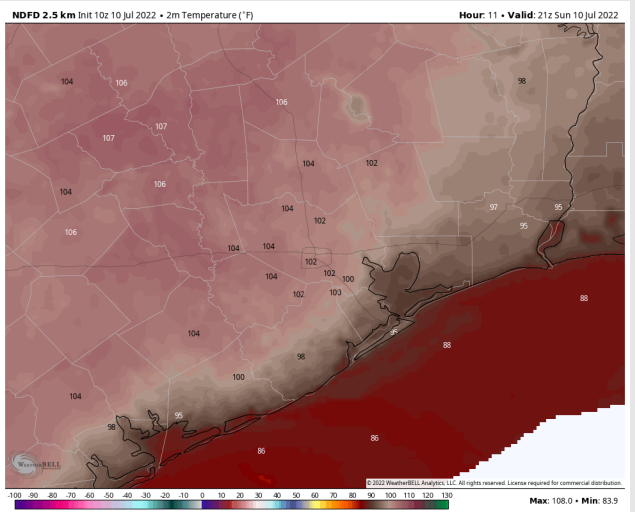
**Temps:** Temp highs on Sunday in the upper 90s and low 100s F for most stations. Boarding station in the upper 80s F.

**Visibility:** No fog conditions anticipated at this time.

## Precip Forecast: 9 PM CT



Wind Speed  
9 PM CT



High Temps  
Today

# Houston Pilots: Mon. 7/11/2022



## Forecast Discussion

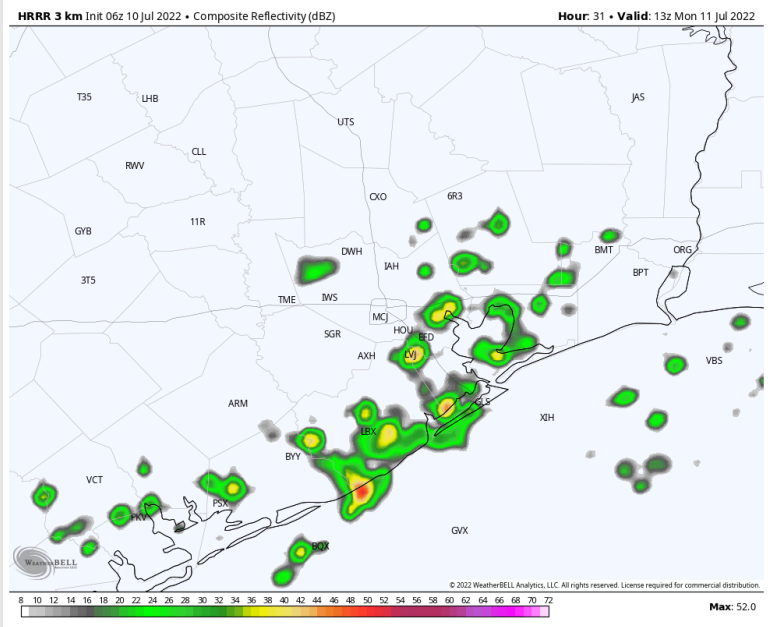
**Precip:** A thunderstorm is expected to move through the area around 1 AM as boundary filters in from the north. Scattered chances (~70%) for showers and storms are expected for the rest of the AM and PM Monday.

**Wind:** Winds look to be 13-18 MPH sustained out of the SW/SSW for Monday with gusts to 25 MPH possible. Winds at northern stations lighter at 8-13 MPH.

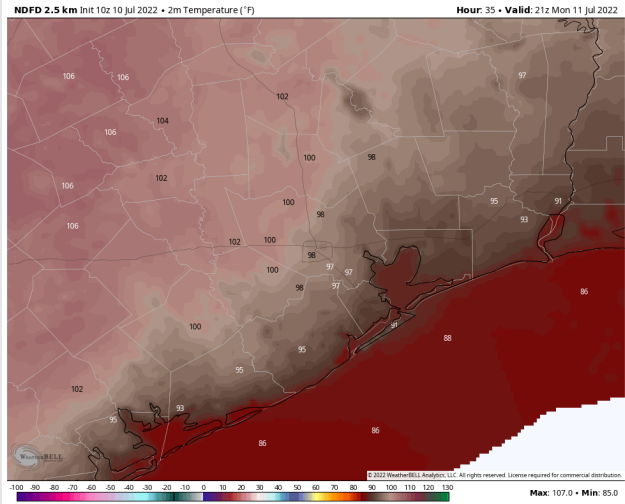
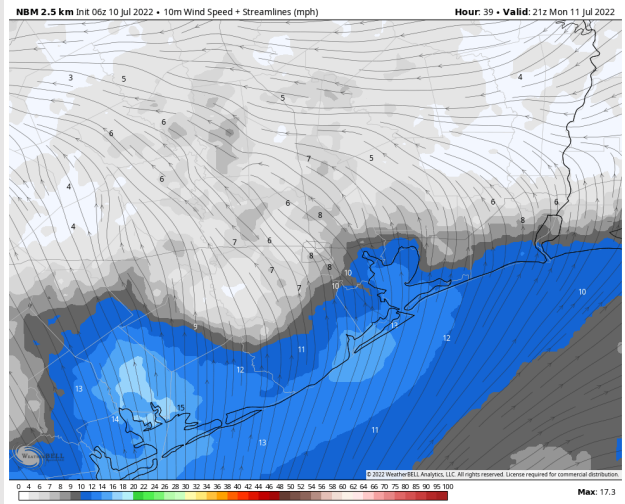
**Temps:** Highs Monday in the upper 90s F for most stations. Boarding station in the upper 80s F.

**Visibility:** Not anticipating fog at this time.

## Precip Forecast: 8 AM CT



Wind Speed:  
4 PM CT



High Temps  
MON

# Houston Pilots: Tue. 7/12/2022

## Forecast Discussion

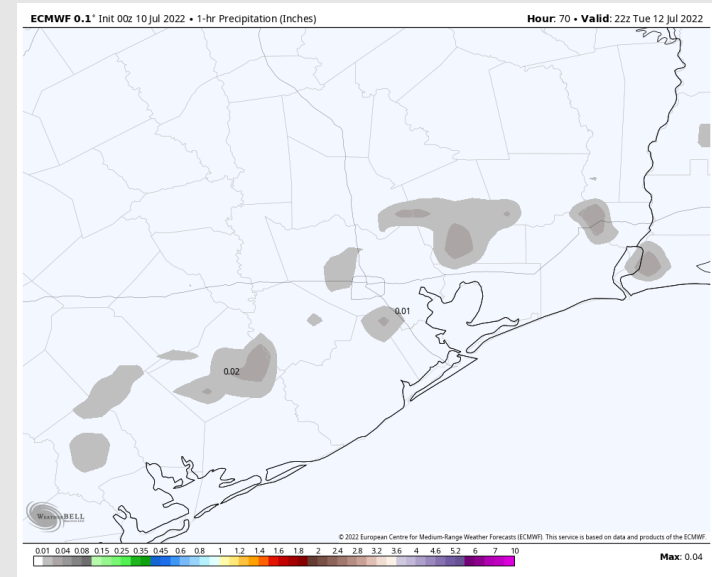
**Precip:** Anticipating additional scattered chances for showers and a possible storm in the afternoon hours. Anticipating dry conditions outside of this timeframe.

**Wind:** Winds are anticipated to be 10-15 MPH sustained out of the SSW/SW throughout Tuesday with a few gusts to 20 MPH possible.

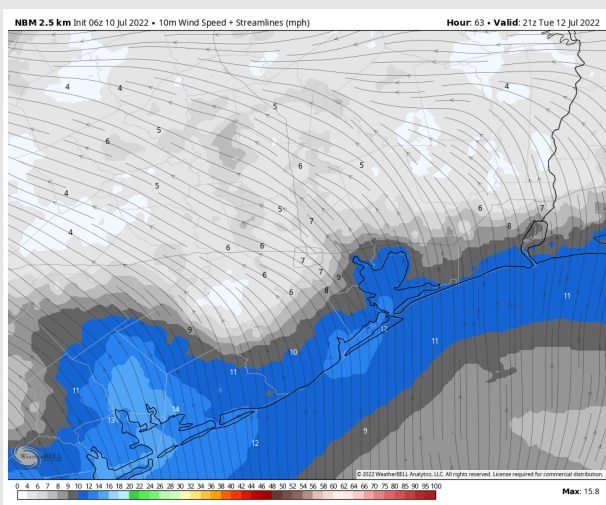
**Temps:** Highs on Tuesday reach the upper 80s to low 90s F for most stations.

**Visibility:** Not anticipating any fog concerns at this time.

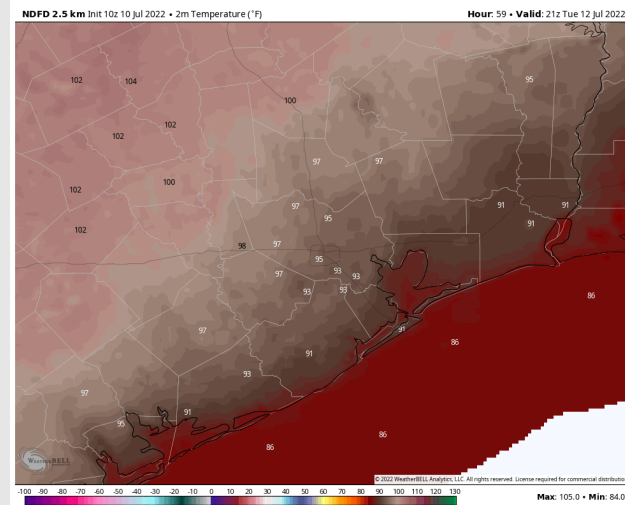
## Precip Forecast: 5 PM CT



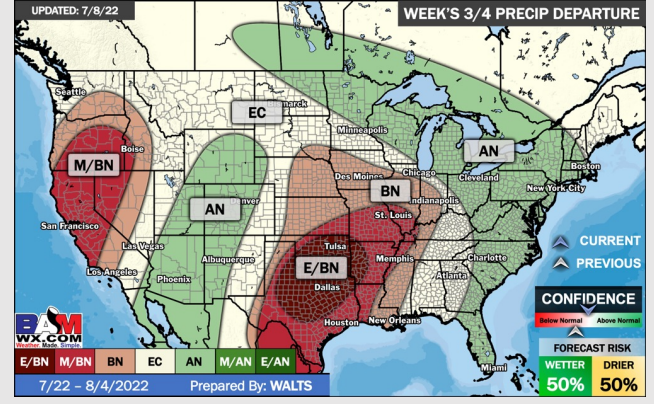
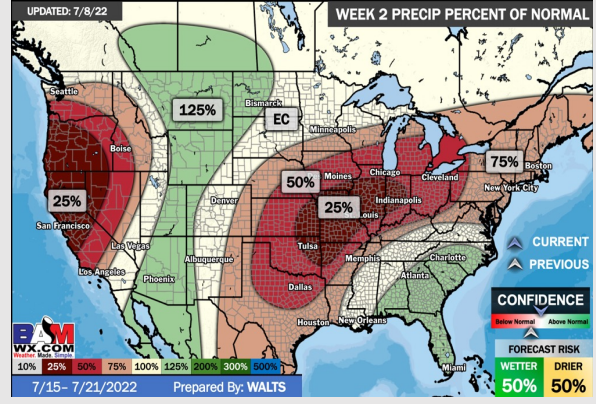
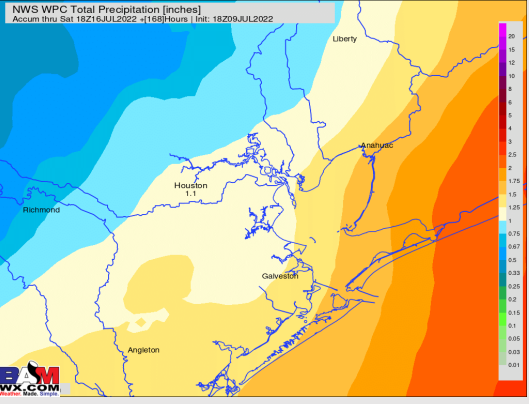
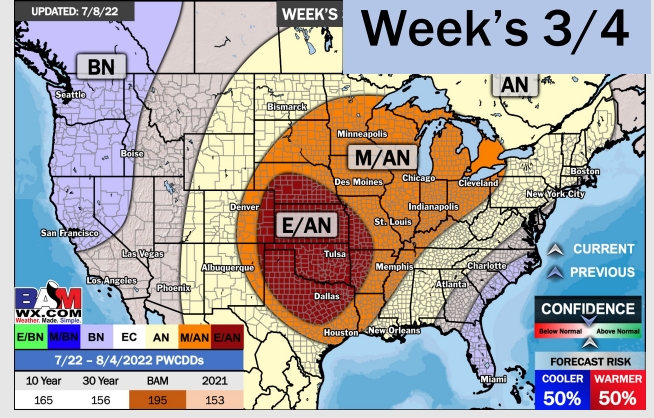
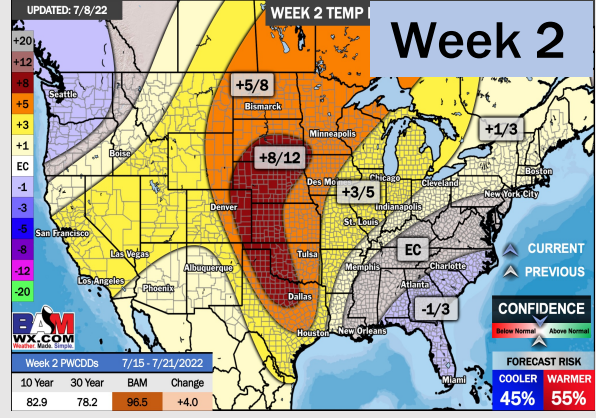
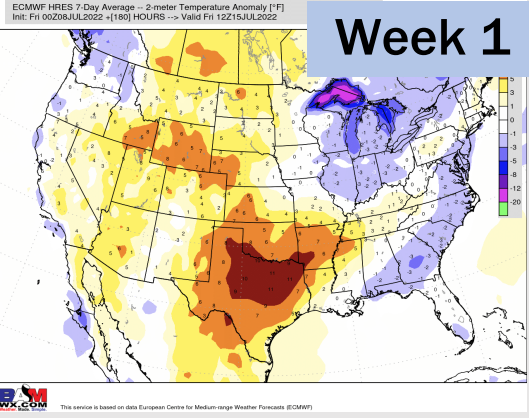
Wind Speed  
4 PM CT



High Temps  
TUE



# Houston Pilots: 7/10/22



- A few scattered chances are anticipated into Sunday and into the upcoming work week. Above normal temperatures are still favored for next week.
- Week 2 likely features above normal risks for temperatures and below normal precipitation risks.
- The weeks ¾ timeframe into August looks to feature above normal temperatures and below normal risks for precip.