

Houston Pilots Forecast Package



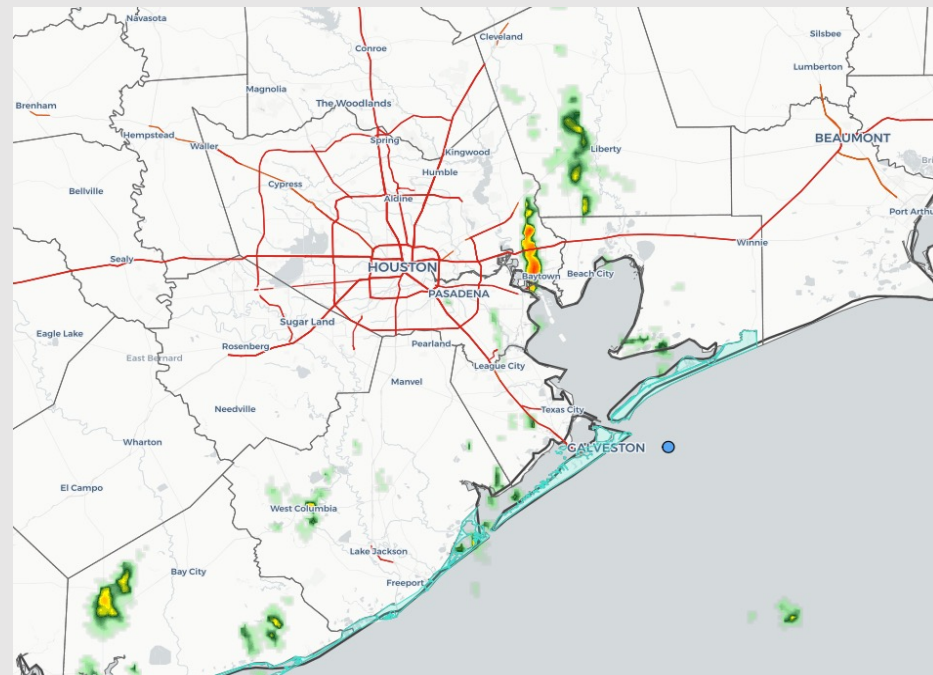
Updated: 5:30 AM CT

Wednesday, June 1, 2022

Forecaster: Vince Bryan

Weather Headlines

- Not seeing a fog threat over at least the next several days.
- Minor chances over the next few days with the possibility of some scattered storms Thu as a boundary moves through.
- No tropical threats being noted in the forecast for the HOU area. There is an area of interest we are watching – however this will be well East of E TX and not be a concern for the area.

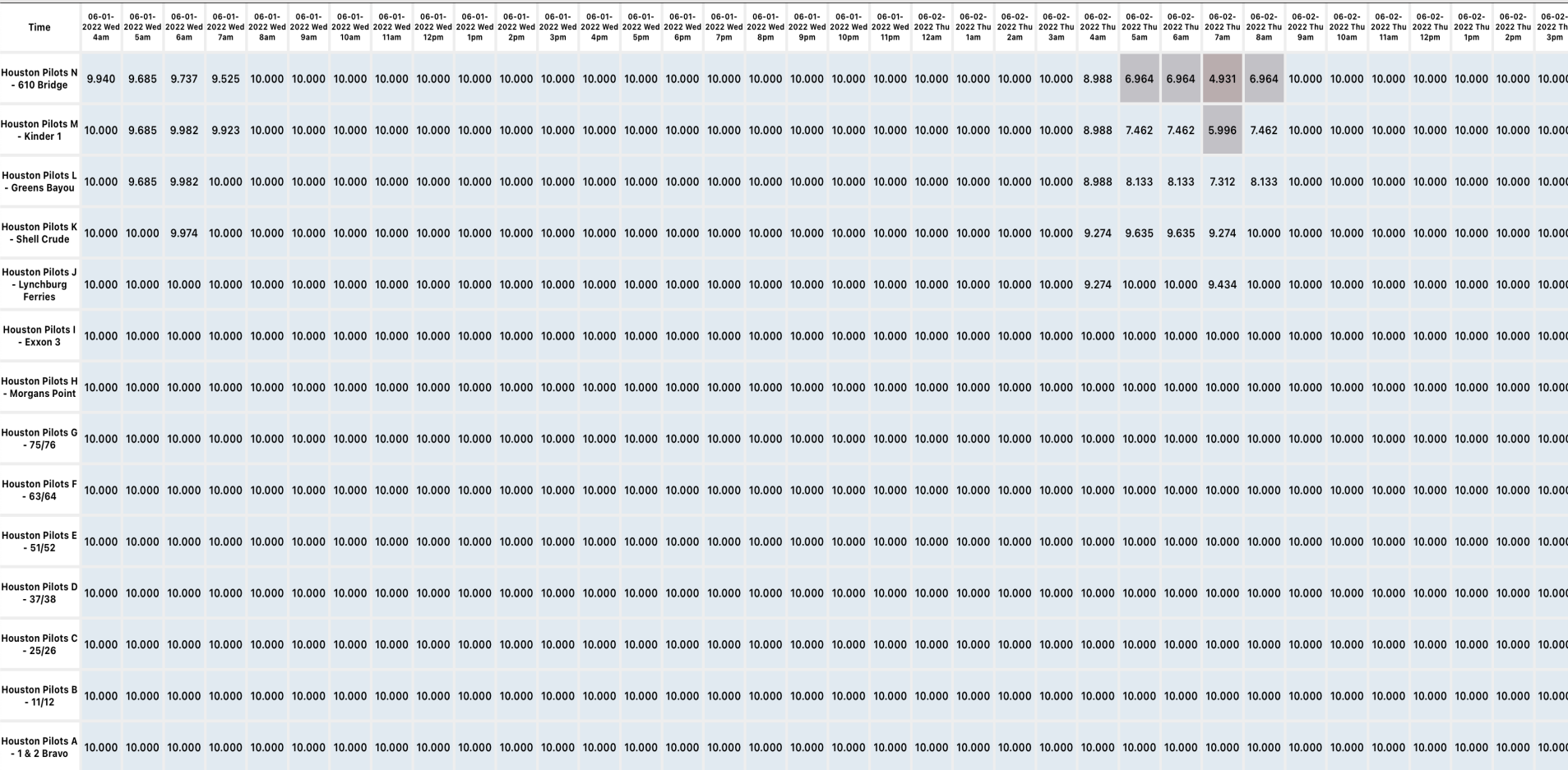


Radar/ NWS Alerts: 5:30 AM CT



As always, please do not hesitate to reach out to us with any forecast questions via the chat option on the Weather Porthole or our on-call number, **(317)-560-8122** press 1 for forecast questions.

The image contains two logos. On the left is the logo for BAM WX.COM, featuring the letters 'BAM' in a stylized font with a white triangle inside the 'A', followed by 'WX.COM' in black and the tagline 'Weather. Made. Simple.' in blue and red. On the right is the logo for Houston Pilots, featuring a large red 'H' with the text 'Houston Pilots' in white to its right.



Houston Pilots Wind Report



Time	06-01-2022 Wed 4am	06-01-2022 Wed 5am	06-01-2022 Wed 6am	06-01-2022 Wed 7am	06-01-2022 Wed 8am	06-01-2022 Wed 9am	06-01-2022 Wed 10am	06-01-2022 Wed 11am	06-01-2022 Wed 12pm	06-01-2022 Wed 1pm	06-01-2022 Wed 2pm	06-01-2022 Wed 3pm	06-01-2022 Wed 4pm	06-01-2022 Wed 5pm	06-01-2022 Wed 6pm	06-01-2022 Wed 7pm	06-01-2022 Wed 8pm	06-01-2022 Wed 9pm	06-01-2022 Wed 10pm	06-01-2022 Wed 11pm	06-02-2022 Thu 12am	06-02-2022 Thu 1am	06-02-2022 Thu 2am	06-02-2022 Thu 3am	06-02-2022 Thu 4am	06-02-2022 Thu 5am	06-02-2022 Thu 6am	06-02-2022 Thu 7am	06-02-2022 Thu 8am	06-02-2022 Thu 9am	06-02-2022 Thu 10am	06-02-2022 Thu 11am	06-02-2022 Thu 12pm	06-02-2022 Thu 1pm	06-02-2022 Thu 2pm	06-02-2022 Thu 3pm	
Houston Pilots N - 610 Bridge	WS: 3 G:13 SSE	WS: 5 G:14 SE	WS: 4 G:11 SSE	WS: 5 G:14 SE	WS: 7 G:17 SSE	WS: 9 G:16 SSE	WS: 9 G:14 SE	WS: 9 G:13 SSE	WS: 9 G:13 SSE	WS: 8 G:12 SE	WS: 8 G:12 SE	WS: 9 G:13 SE	WS: 9 G:13 SE	WS: 10 G:14 SE	WS: 11 G:14 SSE	WS: 9 G:13 SSE	WS: 8 G:12 SSE	WS: 7 G:11 SSE	WS: 5 G:9 SSE	WS: 4 G:7 SSE	WS: 3 G:6 SSE	WS: 2 G:5 SSE	WS: 2 G:3 SSW	WS: 2 G:3 S	WS: 1 G:2 SW	WS: 1 G:2 W	WS: 2 G:3 WNW	WS: 2 G:3 NW	WS: 4 G:5 NW	WS: 4 G:6 NW	WS: 5 G:7 NNW	WS: 4 G:7 NNW	WS: 5 G:9 S	WS: 4 G:9 SSW	WS: 4 G:10 E		
Houston Pilots M - Kinder 1	WS: 3 G:13 SSE	WS: 5 G:14 SSE	WS: 4 G:11 SSE	WS: 5 G:14 SE	WS: 6 G:17 SSE	WS: 8 G:16 SSE	WS: 9 G:14 SSE	WS: 10 G:14 SSE	WS: 9 G:13 SSE	WS: 7 G:12 SE	WS: 7 G:12 SE	WS: 9 G:13 SE	WS: 10 G:14 SE	WS: 10 G:14 SE	WS: 11 G:14 SSE	WS: 9 G:13 SSE	WS: 8 G:12 SSE	WS: 7 G:11 SSE	WS: 5 G:9 SSE	WS: 4 G:7 SSE	WS: 3 G:6 SSE	WS: 2 G:5 S	WS: 2 G:3 SSW	WS: 2 G:3 S	WS: 1 G:2 S	WS: 1 G:2 SW	WS: 1 G:2 W	WS: 1 G:2 WNW	WS: 2 G:3 NW	WS: 4 G:5 NW	WS: 4 G:6 NNW	WS: 5 G:7 NNW	WS: 4 G:7 NNW	WS: 5 G:9 SSE	WS: 4 G:9 SSW	WS: 4 G:11 NE	
Houston Pilots L - Greens Bayou	WS: 4 G:15 SSE	WS: 5 G:15 S	WS: 3 G:10 S	WS: 5 G:17 SSE	WS: 6 G:18 SSE	WS: 7 G:15 SSE	WS: 9 G:14 SSE	WS: 11 G:15 SSE	WS: 9 G:14 SSE	WS: 8 G:13 SSE	WS: 9 G:13 SE	WS: 10 G:14 SE	WS: 10 G:13 SE	WS: 10 G:14 SE	WS: 11 G:15 SSE	WS: 11 G:14 SSE	WS: 9 G:12 SSE	WS: 8 G:10 SSE	WS: 5 G:9 SSE	WS: 4 G:7 SSE	WS: 4 G:6 SSE	WS: 2 G:5 S	WS: 2 G:5 S	WS: 2 G:3 SSW	WS: 1 G:2 S	WS: 1 G:2 SSW	WS: 1 G:2 WNW	WS: 2 G:3 WNW	WS: 4 G:5 NW	WS: 4 G:6 NNW	WS: 5 G:7 NNW	WS: 4 G:7 N	WS: 5 G:8 SE	WS: 4 G:8 S	WS: 5 G:9 E	WS: 4 G:9 E	WS: 5 G:11 E
Houston Pilots K - Shell Crude	WS: 4 G:16 SSE	WS: 4 G:16 S	WS: 3 G:12 S	WS: 6 G:17 SSE	WS: 6 G:18 SSE	WS: 8 G:15 SSE	WS: 9 G:14 SSE	WS: 12 G:16 SSE	WS: 9 G:13 SSE	WS: 9 G:14 SE	WS: 10 G:14 SE	WS: 11 G:15 SE	WS: 11 G:14 SE	WS: 11 G:16 SE	WS: 11 G:14 SSE	WS: 9 G:12 SSE	WS: 8 G:12 SSE	WS: 7 G:10 SSE	WS: 5 G:9 SSE	WS: 4 G:7 SSE	WS: 3 G:6 SSE	WS: 3 G:5 S	WS: 2 G:5 S	WS: 2 G:3 SSW	WS: 1 G:3 SSW	WS: 1 G:2 SW	WS: 1 G:2 WNW	WS: 2 G:3 NW	WS: 2 G:3 NW	WS: 4 G:5 NW	WS: 4 G:6 NNW	WS: 5 G:6 NNW	WS: 4 G:6 N	WS: 5 G:8 ENE	WS: 4 G:8 E	WS: 5 G:9 E	WS: 6 G:11 SE
Houston Pilots J - Lynchburg Ferries	WS: 4 G:17 SSE	WS: 4 G:17 S	WS: 3 G:13 S	WS: 4 G:17 SSE	WS: 5 G:17 SSE	WS: 9 G:14 SSE	WS: 9 G:14 SSE	WS: 12 G:17 SSE	WS: 10 G:14 SSE	WS: 10 G:15 SE	WS: 10 G:14 SE	WS: 12 G:15 SE	WS: 11 G:14 SSE	WS: 11 G:15 SSE	WS: 12 G:16 SSE	WS: 12 G:15 SSE	WS: 10 G:13 SSE	WS: 8 G:12 SSE	WS: 7 G:11 SSE	WS: 6 G:9 SSE	WS: 5 G:8 S	WS: 5 G:7 S	WS: 4 G:5 S	WS: 3 G:5 S	WS: 3 G:4 SSW	WS: 2 G:3 SSW	WS: 1 G:2 SW	WS: 2 G:3 WNW	WS: 2 G:4 NW	WS: 2 G:4 NW	WS: 4 G:5 NW	WS: 4 G:6 NNW	WS: 5 G:6 NNW	WS: 4 G:6 N	WS: 5 G:8 SSE	WS: 5 G:9 E	WS: 6 G:11 W
Houston Pilots I - Exxon 3	WS: 5 G:17 SSE	WS: 6 G:19 S	WS: 5 G:16 SSE	WS: 5 G:16 S	WS: 8 G:17 SSE	WS: 10 G:16 SSE	WS: 10 G:14 SSE	WS: 12 G:16 SSE	WS: 11 G:15 SSE	WS: 12 G:16 SSE	WS: 12 G:15 SSE	WS: 12 G:16 SSE	WS: 12 G:15 SSE	WS: 12 G:16 SSE	WS: 12 G:15 SSE	WS: 10 G:13 SSE	WS: 8 G:12 SSE	WS: 7 G:10 SSE	WS: 5 G:9 SSE	WS: 4 G:8 SSE	WS: 3 G:7 S	WS: 2 G:6 S	WS: 3 G:5 SSW	WS: 2 G:4 SSW	WS: 2 G:4 SSW	WS: 2 G:3 W	WS: 2 G:4 NW	WS: 2 G:4 NW	WS: 4 G:5 NW	WS: 4 G:6 NW	WS: 4 G:6 NNW	WS: 4 G:6 NNW	WS: 5 G:7 ESE	WS: 5 G:9 E	WS: 6 G:11 WSW		
Houston Pilots H - Morgans Point	WS: 10 G:18 SSE	WS: 10 G:19 S	WS: 9 G:17 SSE	WS: 9 G:17 S	WS: 10 G:17 SSE	WS: 12 G:17 SSE	WS: 11 G:15 SSE	WS: 12 G:15 SSE	WS: 12 G:14 SSE	WS: 14 G:17 SSE	WS: 13 G:16 SSE	WS: 13 G:16 SE	WS: 13 G:15 SSE	WS: 13 G:17 SSE	WS: 13 G:16 SSE	WS: 12 G:14 SSE	WS: 10 G:13 SSE	WS: 9 G:13 SSE	WS: 8 G:12 SSE	WS: 7 G:11 SSE	WS: 6 G:9 SSE	WS: 5 G:8 S	WS: 4 G:7 S	WS: 4 G:6 S	WS: 3 G:6 SSW	WS: 3 G:6 SSW	WS: 3 G:5 SSW	WS: 2 G:4 W	WS: 2 G:5 WNW	WS: 4 G:6 NNW	WS: 4 G:6 NNW	WS: 4 G:6 SSW	WS: 4 G:6 SSW	WS: 5 G:7 ENE	WS: 4 G:7 G:9 E	WS: 5 G:10 SSE	
Houston Pilots G - 75/76	WS: 15 G:20 SSE	WS: 14 G:19 S	WS: 15 G:19 SSE	WS: 12 G:17 S	WS: 14 G:18 SSE	WS: 14 G:17 SSE	WS: 14 G:15 SSE	WS: 14 G:15 SSE	WS: 13 G:15 SSE	WS: 16 G:18 SSE	WS: 15 G:16 SSE	WS: 15 G:16 SE	WS: 14 G:15 SE	WS: 15 G:16 SSE	WS: 13 G:15 SSE	WS: 12 G:14 SSE	WS: 11 G:14 SSE	WS: 11 G:14 SSE	WS: 10 G:13 SSE	WS: 8 G:12 SSE	WS: 8 G:11 SSE	WS: 6 G:9 S	WS: 6 G:9 S	WS: 5 G:8 S	WS: 4 G:7 S	WS: 4 G:6 SSW	WS: 3 G:5 SSW	WS: 3 G:5 WNW	WS: 3 G:5 NW	WS: 3 G:5 NW	WS: 4 G:6 SSW	WS: 4 G:6 SSW	WS: 3 G:5 SSW	WS: 3 G:6 NE	WS: 4 G:7 E	WS: 5 G:8 ESE	WS: 6 G:9 SE
Houston Pilots F - 63/64	WS: 16 G:21 SSE	WS: 14 G:19 S	WS: 16 G:19 SSE	WS: 13 G:18 SSE	WS: 15 G:18 SSE	WS: 13 G:17 SSE	WS: 15 G:16 SE	WS: 15 G:14 SSE	WS: 13 G:15 SSE	WS: 16 G:17 SSE	WS: 14 G:15 SE	WS: 14 G:15 SE	WS: 13 G:14 SE	WS: 15 G:16 SSE	WS: 13 G:15 SSE	WS: 12 G:14 SSE	WS: 11 G:15 SSE	WS: 10 G:14 SSE	WS: 9 G:13 SSE	WS: 8 G:11 SSE	WS: 7 G:10 S	WS: 6 G:9 S	WS: 6 G:8 S	WS: 5 G:7 S	WS: 4 G:6 SSW	WS: 4 G:5 SSW	WS: 3 G:5 WNW	WS: 3 G:5 NW	WS: 3 G:5 NW	WS: 4 G:6 SSW	WS: 4 G:6 SSW	WS: 3 G:5 SSW	WS: 4 G:6 SSW	WS: 3 G:5 NNE	WS: 4 G:6 ENE	WS: 5 G:7 ESE	WS: 6 G:8 SE
Houston Pilots E - 51/52	WS: 17 G:22 SSE	WS: 15 G:19 S	WS: 16 G:19 SSE	WS: 15 G:19 SSE	WS: 15 G:18 SSE	WS: 14 G:17 SSE	WS: 15 G:16 SSE	WS: 15 G:15 SSE	WS: 13 G:14 SSE	WS: 14 G:15 SE	WS: 13 G:14 SSE	WS: 13 G:13 SE	WS: 12 G:15 SSE	WS: 13 G:14 SSE	WS: 13 G:15 SSE	WS: 12 G:14 SSE	WS: 11 G:15 SSE	WS: 10 G:14 SSE	WS: 9 G:13 SSE	WS: 8 G:12 SSE	WS: 7 G:11 SSE	WS: 6 G:9 S	WS: 6 G:8 S	WS: 5 G:7 S	WS: 4 G:6 SSW	WS: 4 G:5 SSW	WS: 3 G:5 W	WS: 3 G:5 NW	WS: 3 G:5 NW	WS: 4 G:6 NNW	WS: 4 G:6 W	WS: 3 G:5 NE	WS: 4 G:6 NE	WS: 5 G:7 ESE	WS: 6 G:8 SE		
Houston Pilots D - 37/38	WS: 17 G:21 SSE	WS: 15 G:20 S	WS: 15 G:19 SSE	WS: 15 G:19 SSE	WS: 14 G:18 SSE	WS: 16 G:18 SSE	WS: 15 G:16 SSE	WS: 14 G:15 SSE	WS: 13 G:14 SSE	WS: 13 G:14 SE	WS: 12 G:14 SSE	WS: 12 G:13 SE	WS: 13 G:14 SE	WS: 13 G:15 SSE	WS: 13 G:14 SSE	WS: 12 G:14 SSE	WS: 12 G:15 SSE	WS: 11 G:14 SSE	WS: 10 G:13 SSE	WS: 9 G:12 SSE	WS: 8 G:11 SSE	WS: 7 G:9 S	WS: 6 G:8 S	WS: 5 G:7 S	WS: 4 G:6 S	WS: 3 G:5 SSW	WS: 3 G:5 SSW	WS: 3 G:5 NW	WS: 3 G:5 NW	WS: 4 G:6 NNW	WS: 4 G:6 W	WS: 4 G:6 ENE	WS: 4 G:6 NE	WS: 5 G:7 ESE	WS: 6 G:9 SE		
Houston Pilots C - 25/26	WS: 15 G:21 SSE	WS: 13 G:19 SSE	WS: 13 G:19 SSE	WS: 13 G:18 SSE	WS: 13 G:18 SSE	WS: 14 G:16 SSE	WS: 13 G:14 SE	WS: 13 G:14 SE	WS: 12 G:14 SSE	WS: 12 G:14 SSE	WS: 12 G:13 SE	WS: 12 G:14 SE	WS: 12 G:14 SE	WS: 13 G:14 SSE	WS: 12 G:13 SSE	WS: 11 G:14 SSE	WS: 10 G:13 SSE	WS: 9 G:12 SSE	WS: 8 G:11 SSE	WS: 7 G:10 SSE	WS: 6 G:9 SSE	WS: 6 G:8 SSE	WS: 5 G:7 S	WS: 4 G:6 S	WS: 4 G:5 SSW	WS: 3 G:4 SW	WS: 3 G:5 NW	WS: 3 G:5 NW	WS: 4 G:6 NNW	WS: 4 G:6 SSW	WS: 4 G:6 E	WS: 4 G:6 NE	WS: 5 G:7 ESE	WS: 6 G:8 SE			
Houston Pilots B - 11/12	WS: 16 G:21 SSE	WS: 14 G:19 SSE	WS: 14 G:19 SSE	WS: 14 G:18 SSE	WS: 14 G:18 SSE	WS: 15 G:18 SSE	WS: 13 G:15 SSE	WS: 12 G:13 SE	WS: 13 G:14 SE	WS: 11 G:14 SSE	WS: 12 G:14 SSE	WS: 11 G:13 SE	WS: 12 G:14 SE	WS: 12 G:13 SE	WS: 12 G:14 SSE	WS: 12 G:14 SE	WS: 10 G:13 SSE	WS: 9 G:12 SSE	WS: 8 G:11 SSE	WS: 7 G:10 SSE	WS: 6 G:9 SSE	WS: 5 G:8 SSE	WS: 4 G:7 S	WS: 4 G:6 S	WS: 3 G:5 SSW	WS: 3 G:4 SSW	WS: 3 G:5 NW	WS: 3 G:5 NW	WS: 4 G:6 NNW	WS: 4 G:6 W	WS: 4 G:6 ENE	WS: 4 G:6 ENE	WS: 5 G:7 SE	WS: 6 G:8 SE			
Houston Pilots A - 1 & 2 Bravo	WS: 18 G:21 SSE	WS: 17 G:20 SSE	WS: 16 G:19 SSE	WS: 16 G:19 SSE	WS: 16 G:18 SSE	WS: 15 G:17 SSE	WS: 13 G:15 SE	WS: 12 G:13 SE	WS: 12 G:13 SE	WS: 11 G:12 SE	WS: 13 G:15 SSE	WS: 12 G:13 SE	WS: 12 G:14 SE	WS: 12 G:13 SE	WS: 12 G:14 SSE	WS: 12 G:15 SSE	WS: 10 G:14 SSE	WS: 9 G:13 SSE	WS: 8 G:11 SSE	WS: 7 G:9 SSE	WS: 6 G:8 SSE	WS: 5 G:7 S	WS: 4 G:6 S	WS: 4 G:5 S	WS: 3 G:4 SSW	WS: 3 G:5 SSE	WS: 3 G:5 NW	WS: 3 G:5 NW	WS: 4 G:6 NNW	WS: 3 G:5 SW	WS: 3 G:6 NE	WS: 4 G:6 ENE	WS: 5 G:7 SE	WS: 6 G:8 SSE			

See slides below for official thoughts on winds.

Houston Pilots Extended Range Visibility Report



Saturday 6/4/22

Currently not anticipating fog on Saturday.

Confidence



Monday 6/6/22

Continuing to not see a fog signal for Monday.

Confidence



Sunday 6/5/22

Not seeing a fog signal for the stations on Sunday.

Confidence



Daily Fog Chance

Friday AM	Unlikely
Saturday AM	Unlikely
Sunday AM	Unlikely

Houston Pilots: Wed. 6/1/2022

Forecast Discussion

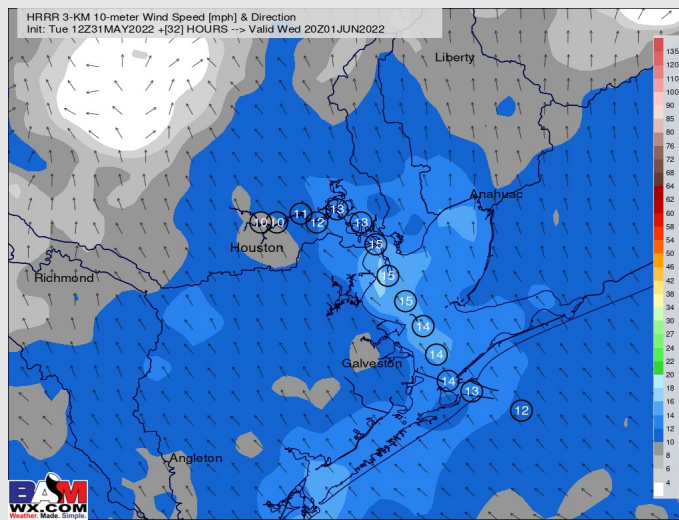
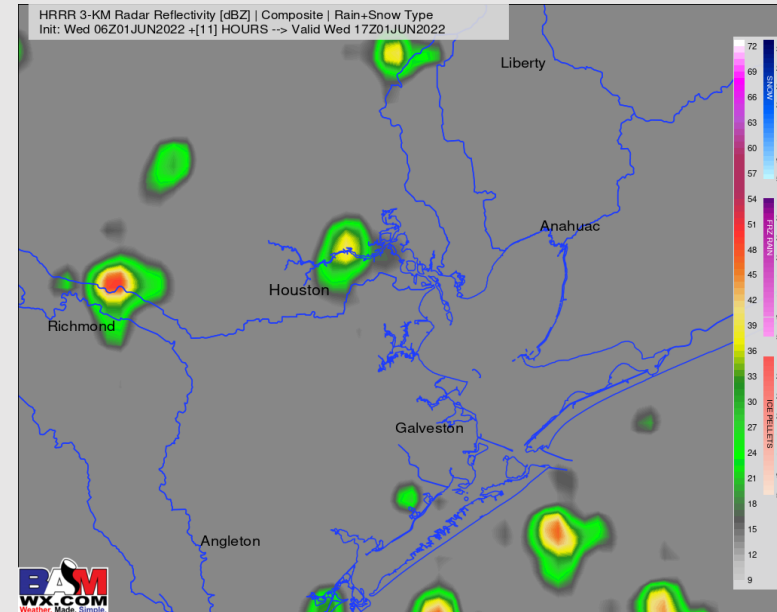
Precip: Ongoing hit and miss pockets of light to at times briefly moderate rain will be possible out through mid-day (~2-3) before a drier late afternoon/evening is favored. Chances the first half of the day around ~30% as precip will be rather hit and miss.

Wind: Winds are 13-18 MPH with gusts to 23 MPH through 9-10 AM, then decrease to 10-15 MPH for the rest of the day with a few gusts 15-20 MPH possible. Winds remain out of the SE.

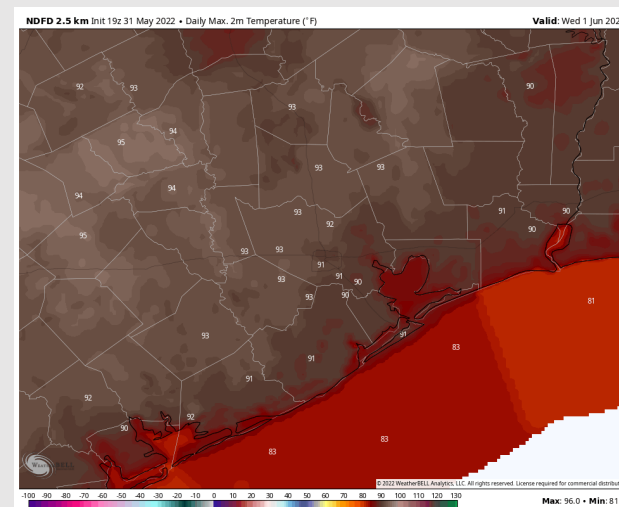
Temps: Highs will reach the mid to upper 80s F for the stations, warmer further inland.

Visibility: No fog is expected, however visibility may drop a few miles under a shower.

Precip Forecast: 1 PM CT



Wind Speed
3 PM CT



High Temps

Houston Pilots: *Thu. 6/2/2022*

Forecast Discussion

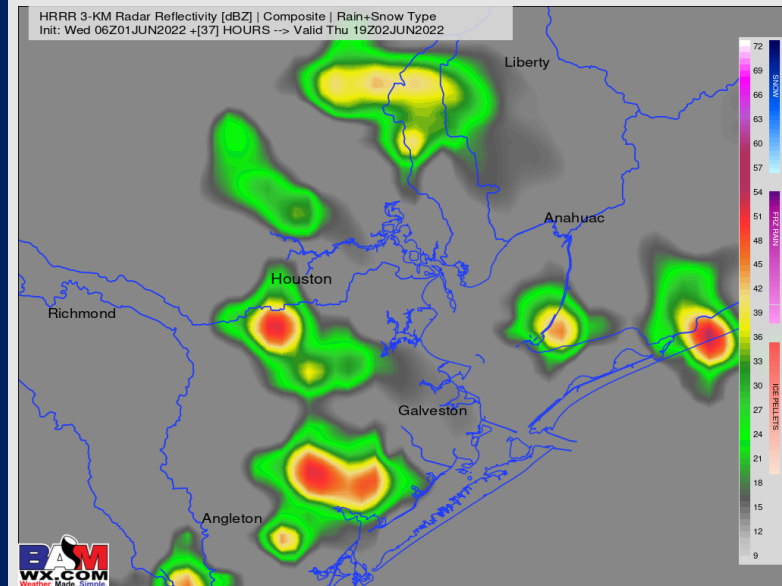
Precip: Expecting to stay precip free through the AM hours before scattered showers and thunderstorms work into the picture for the afternoon/evening hours. ~40% coverage with any cell holding the potential of lightning and a briefly moderate to heavy downpour.

Wind: Winds will vary in direction at 3-8 MPH for the first half of the day. Beyond ~2-3 PM, winds will turn out of the SE at 5-10 MPH sustained with gusts locally higher. Under a stronger thunderstorm, gusts 20-30+ MPH will be possible.

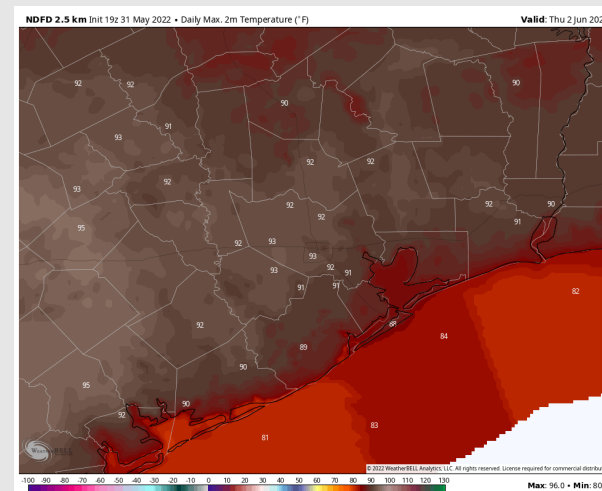
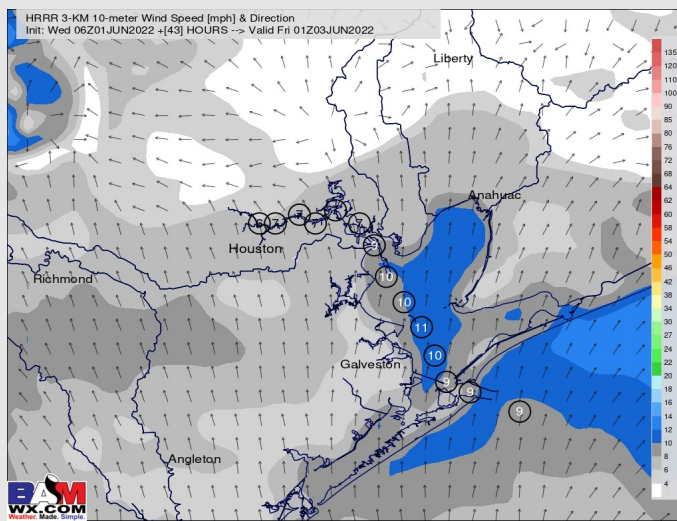
Temps: Highs will reach the upper 80s F to around 90F on Thursday.

Visibility: Not anticipating fog issues for Thursday.

Precip Forecast: 3 PM CT



Wind Speed:
5 PM CT



High Temps
Thursday

Houston Pilots: *Fri. 6/3/2022*

Forecast Discussion

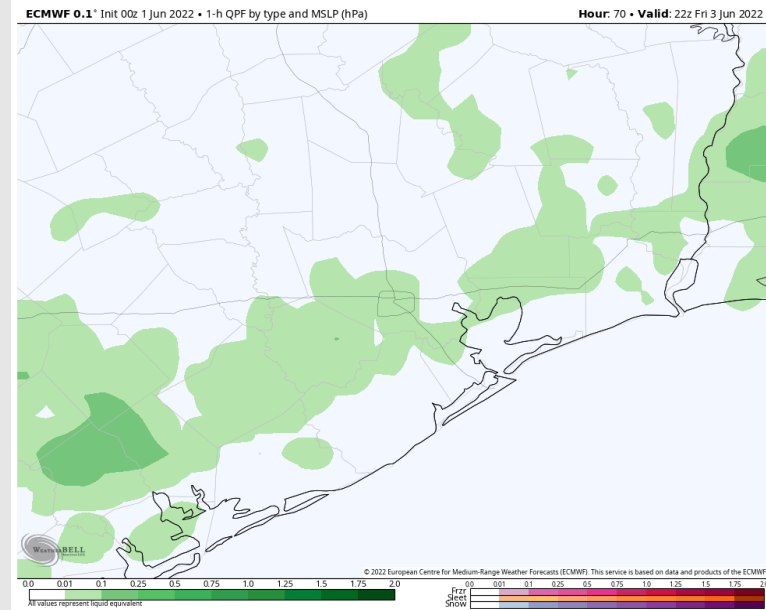
Precip: A few scattered chances for showers and thunderstorms in the afternoon and evening look to be possible (~40%). Anticipating more dry time than not on Friday (esp. the AM).

Wind: Winds look to be 3-8 MPH sustained throughout most of Friday. Winds veer from the NW to the NE in the AM, and out of the SE for the PM hours.

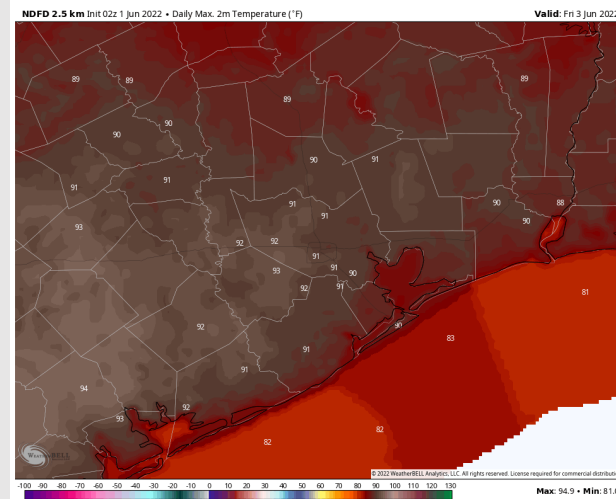
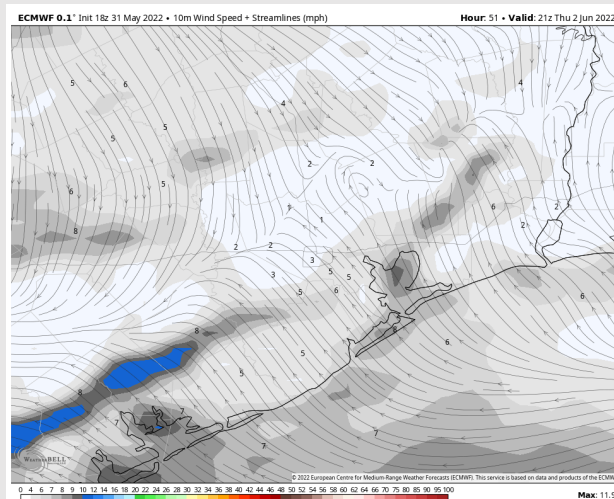
Temps: Highs once again reach the upper 80s F for the stations, warmer further inland.

Visibility: Not anticipating fog issues for Friday.

Precip Forecast: 5 PM CT

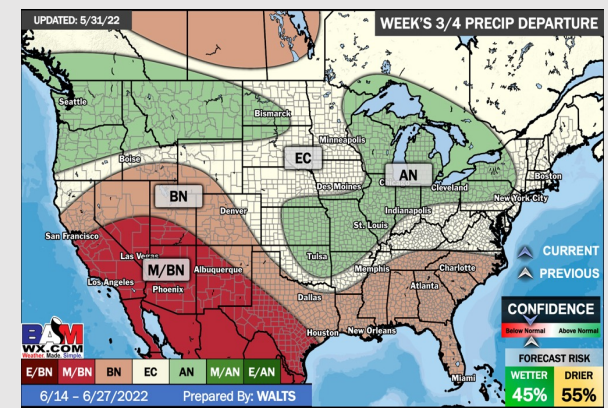
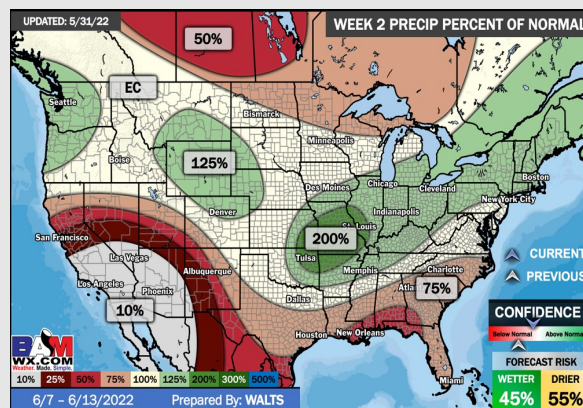
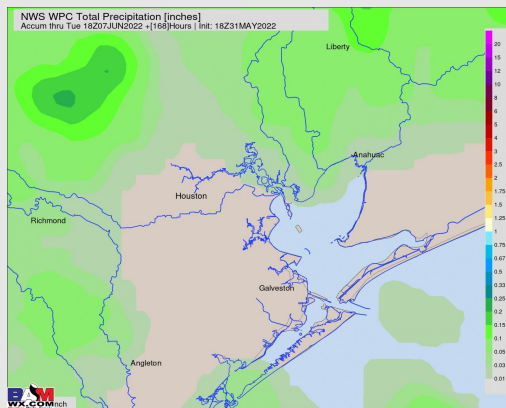
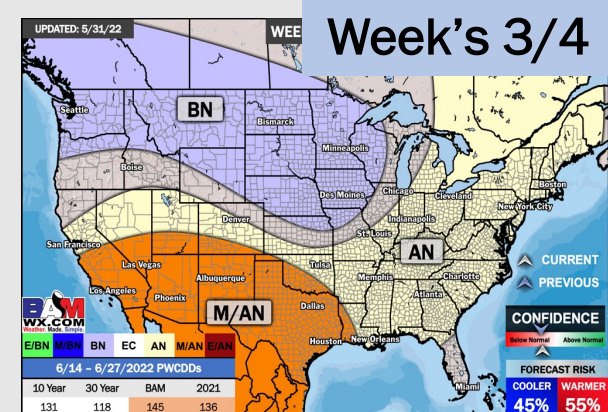
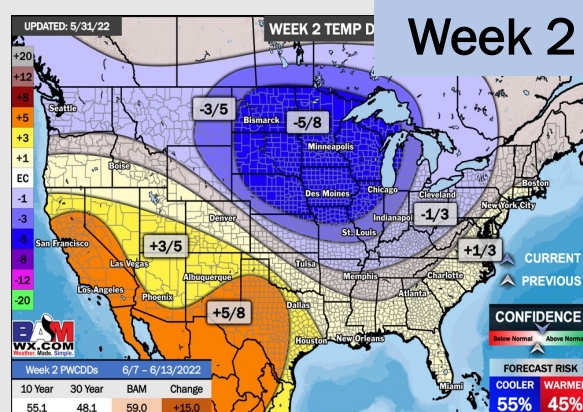
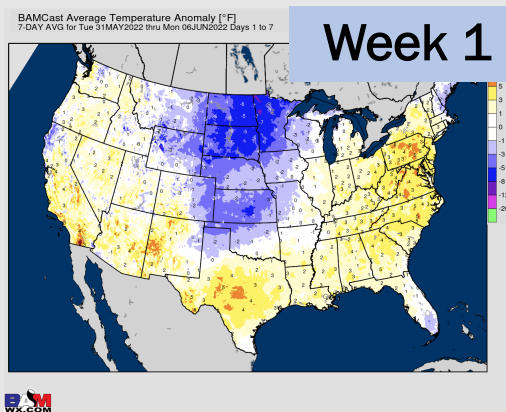


Wind Speed 4 PM CT



High Temps Friday

Houston Pilots: 6/1/22



- Possibly better precip chances Thu with a boundary moving through, however, totals are not impressive for this week.
- Week 2 likely features above normal risks for temperatures, and below normal precipitation risks.
- The weeks ¾ timeframe looks to features above normal temperatures and below normal risks for precip.