

Houston Pilots Forecast Package



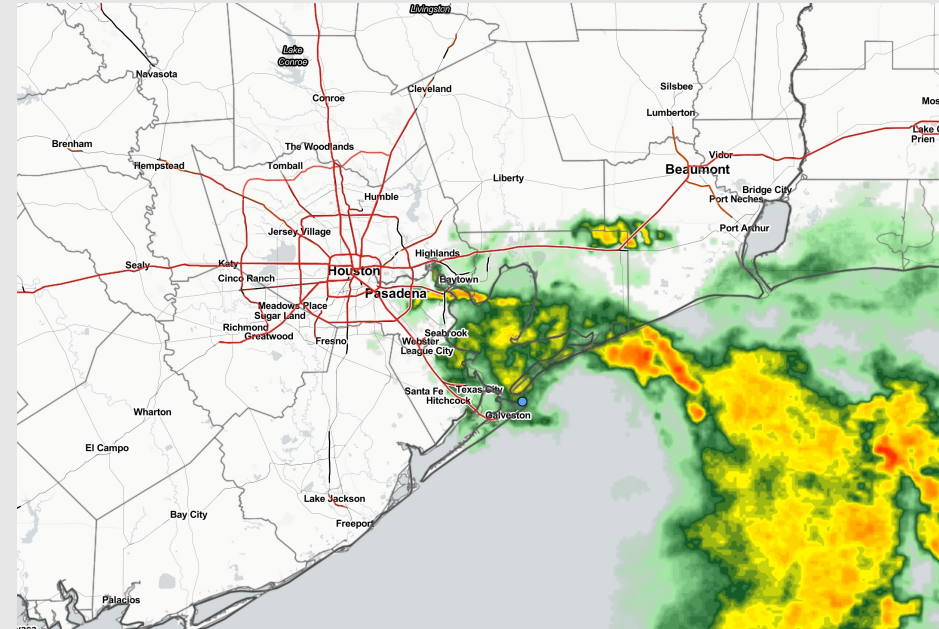
Updated: 3:45 PM CT

Thursday, June 30, 2022

Forecaster: John Kemper

Weather Headlines

- Reduced visibility down to a couple miles is possible within any of these heavy pockets of precip in the next couple of days.
- Continued scattered shower and thunderstorm chances stick around until Saturday before this weakly organized wave of Gulf moisture moves Northeast.
- Heavy rainfall rates of 0.5"-2" an hour will be possible as activity continues to spread across the region
- Latest details on tropical activity on the slides below.



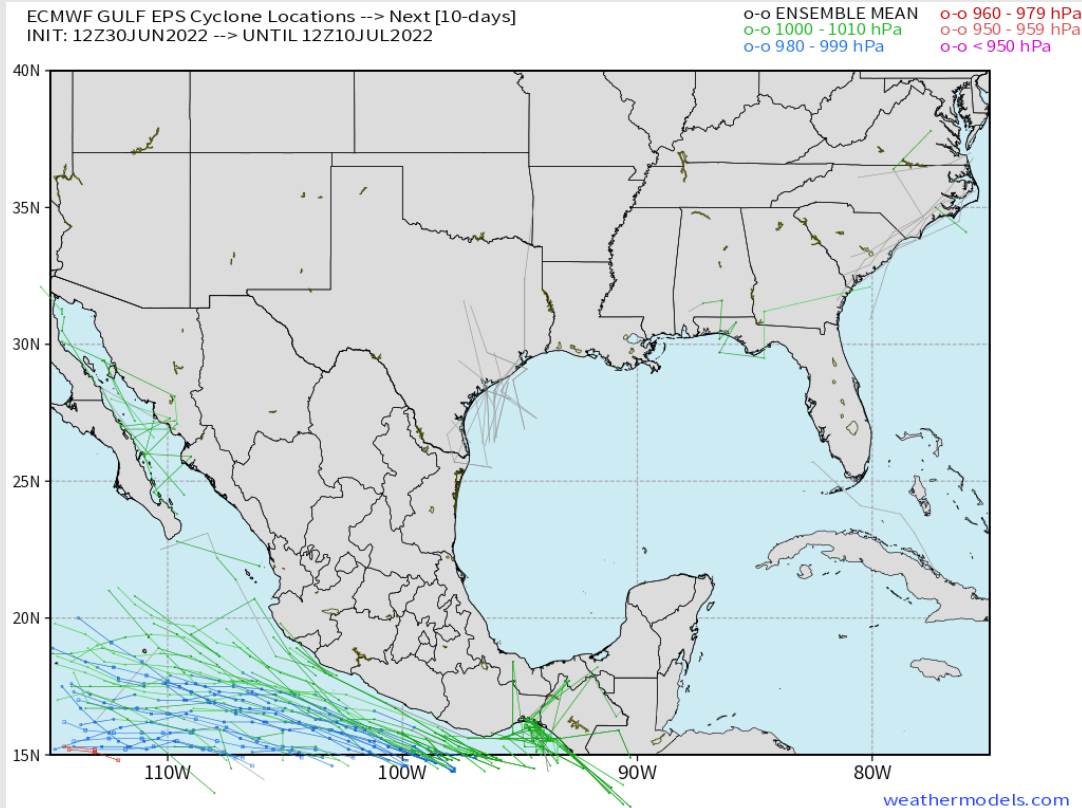
Radar/ NWS Alerts: 3:45 PM CT



As always, please do not hesitate to reach out to us with any forecast questions via the chat option on the Weather Porthole or our on-call number, **(317)-560-8122** press 1 for forecast questions.

Houston Pilots Extended Range Tropical Report

Various model tracks next 7 days



Outside of the loosely organized wave near SE TX providing rain over the next few days, no tropical threats are being noted for SE TX over the next 7-10 days.

Confidence

Above
Normal

Below
Normal

The image contains two logos. On the left is the logo for BAM WX.COM, featuring the letters 'BAM' in a stylized font with a white 'A' and a black shadow, followed by 'WX.COM' in black and 'Weather. Made. Simple.' in blue and red below it. On the right is the logo for Houston Pilots, featuring a large red 'H' with a black outline and the text 'Houston Pilots' in white to its left.



Time	06-30- 2022 Thu 3pm	06-30- 2022 Thu 4pm	06-30- 2022 Thu 5pm	06-30- 2022 Thu 6pm	06-30- 2022 Thu 7pm	06-30- 2022 Thu 8pm	06-30- 2022 Thu 9pm	06-30- 2022 Thu 10pm	06-30- 2022 Thu 11pm	07-01- 2022 Fri 12am	07-01- 2022 Fri 1am	07-01- 2022 Fri 2am	07-01- 2022 Fri 3am	07-01- 2022 Fri 4am	07-01- 2022 Fri 5am	07-01- 2022 Fri 6am	07-01- 2022 Fri 7am	07-01- 2022 Fri 8am	07-01- 2022 Fri 9am	07-01- 2022 Fri 10am	07-01- 2022 Fri 11am	07-01- 2022 Fri 12pm	07-01- 2022 Fri 1pm	07-01- 2022 Fri 2pm	07-01- 2022 Fri 3pm	07-01- 2022 Fri 4pm	07-01- 2022 Fri 5pm	07-01- 2022 Fri 6pm	07-01- 2022 Fri 7pm	07-01- 2022 Fri 8pm	07-01- 2022 Fri 9pm	07-01- 2022 Fri 10pm	07-01- 2022 Fri 11pm	07-02- 2022 Sat 12am	07-02- 2022 Sat 1am	07-02- 2022 Sat 2am			
Houston Pilots N - 610 Bridge	6.931	6.931	6.976	8.669	10.000	10.000	10.000	10.000	10.000	10.000	10.000	10.000	9.038	7.131	7.924	7.924	6.513	6.958	6.513	6.964	6.964	6.930	9.033	7.919	9.514	10.000	10.000	10.000	10.000	10.000	10.000	10.000	10.000	10.000	10.000	10.000	10.000	10.000	
Houston Pilots M - Kinder 1	6.931	6.931	6.976	8.667	10.000	10.000	10.000	10.000	10.000	10.000	10.000	10.000	9.038	7.455	7.924	7.924	6.513	6.958	6.661	7.212	6.964	6.930	8.432	8.198	9.515	10.000	10.000	10.000	10.000	10.000	10.000	10.000	10.000	10.000	10.000	10.000	10.000	10.000	10.000
Houston Pilots L - Greens Bayou	7.609	6.931	7.609	8.999	10.000	10.000	10.000	10.000	10.000	10.000	10.000	10.000	10.000	7.924	7.924	7.924	5.928	6.920	7.706	7.511	7.573	7.539	8.573	8.573	9.033	10.000	10.000	10.000	10.000	10.000	10.000	10.000	10.000	10.000	10.000	10.000	10.000	10.000	10.000
Houston Pilots K - Shell Crude	6.931	6.931	6.959	8.019	10.000	10.000	10.000	10.000	10.000	10.000	10.000	10.000	10.000	7.924	7.924	7.924	6.875	6.999	8.988	8.033	8.033	9.033	9.033	9.033	9.516	10.000	10.000	10.000	10.000	10.000	10.000	10.000	10.000	10.000	10.000	10.000	10.000	10.000	10.000
Houston Pilots J - Lynchburg Ferries	7.617	6.931	7.605	8.999	10.000	10.000	10.000	10.000	10.000	10.000	10.000	10.000	10.000	7.924	7.924	7.924	6.875	6.999	8.988	8.033	8.033	9.033	9.033	9.033	9.033	9.033	10.000	10.000	10.000	10.000	10.000	10.000	10.000	10.000	10.000	10.000	10.000	10.000	
Houston Pilots I - Exxon 3	6.931	6.931	6.931	7.885	10.000	10.000	10.000	10.000	10.000	10.000	10.000	10.000	10.000	7.924	7.924	7.924	6.918	8.033	8.988	8.033	8.033	9.033	10.000	10.000	9.033	10.000	10.000	10.000	10.000	10.000	10.000	10.000	10.000	10.000	10.000	10.000	10.000	10.000	10.000
Houston Pilots H - Morgans Point	6.579	6.931	6.931	7.885	10.000	10.000	10.000	10.000	10.000	10.000	10.000	10.000	10.000	8.496	7.924	8.461	8.033	8.509	8.988	8.033	8.988	9.058	10.000	10.000	9.253	10.000	10.000	10.000	10.000	10.000	10.000	10.000	10.000	10.000	10.000	10.000	10.000	10.000	10.000
Houston Pilots G - 75/76	5.897	5.897	6.931	7.885	10.000	10.000	10.000	10.000	10.000	10.000	10.000	10.000	10.000	9.038	8.766	9.038	8.033	8.988	8.988	8.033	8.988	10.000	10.000	10.000	9.253	10.000	10.000	10.000	10.000	10.000	10.000	10.000	10.000	10.000	10.000	10.000	10.000	10.000	10.000
Houston Pilots F - 63/64	4.942	5.897	6.931	7.885	10.000	10.000	10.000	10.000	10.000	10.000	10.000	10.000	10.000	9.618	9.038	10.000	8.988	8.988	8.988	8.033	8.988	10.000	10.000	10.000	9.033	10.000	10.000	10.000	10.000	10.000	10.000	10.000	10.000	10.000	10.000	10.000	10.000	10.000	10.000
Houston Pilots E - 51/52	4.386	5.481	5.830	7.885	10.000	10.000	10.000	10.000	10.000	10.000	10.000	10.000	10.000	10.000	9.038	10.000	8.988	10.000	8.988	7.567	10.000	10.000	10.000	10.000	9.033	10.000	10.000	10.000	10.000	10.000	10.000	10.000	10.000	10.000	10.000	10.000	10.000	10.000	
Houston Pilots D - 37/38	2.749	3.908	5.203	7.458	10.000	10.000	10.000	10.000	10.000	10.000	10.000	10.000	10.000	10.000	9.038	10.000	10.000	10.000	8.988	8.988	10.000	10.000	10.000	10.000	10.000	10.000	10.000	10.000	10.000	10.000	10.000	10.000	10.000	10.000	10.000	10.000	10.000	10.000	
Houston Pilots C - 25/26	2.000	3.908	5.897	7.640	10.000	10.000	10.000	10.000	10.000	10.000	10.000	10.000	10.000	10.000	9.038	10.000	10.000	10.000	8.988	10.000	10.000	10.000	10.000	10.000	10.000	10.000	10.000	10.000	10.000	10.000	10.000	10.000	10.000	10.000	10.000	10.000	10.000	10.000	
Houston Pilots B - 11/12	2.000	3.908	5.897	7.885	10.000	10.000	10.000	10.000	10.000	10.000	10.000	10.000	10.000	10.000	9.038	10.000	10.000	10.000	7.000	10.000	10.000	10.000	10.000	9.033	10.000	10.000	10.000	10.000	10.000	10.000	10.000	10.000	10.000	10.000	10.000	10.000	10.000	10.000	
Houston Pilots A - 1 & 2 Bravo	2.000	3.908	5.897	7.885	10.000	10.000	10.000	10.000	10.000	10.000	10.000	10.000	10.000	10.000	10.000	10.000	10.000	10.000	10.000	10.000	10.000	10.000	10.000	10.000	10.000	10.000	10.000	10.000	10.000	10.000	10.000	10.000	10.000	10.000	10.000	10.000	10.000	10.000	

Houston Pilots Wind Report



Time	06-30-2022 Thu 3pm	06-30-2022 Thu 4pm	06-30-2022 Thu 5pm	06-30-2022 Thu 6pm	06-30-2022 Thu 7pm	06-30-2022 Thu 8pm	06-30-2022 Thu 9pm	06-30-2022 Thu 10pm	06-30-2022 Thu 11pm	07-01-2022 Fri 12am	07-01-2022 Fri 1am	07-01-2022 Fri 2am	07-01-2022 Fri 3am	07-01-2022 Fri 4am	07-01-2022 Fri 5am	07-01-2022 Fri 6am	07-01-2022 Fri 7am	07-01-2022 Fri 8am	07-01-2022 Fri 9am	07-01-2022 Fri 10am	07-01-2022 Fri 11am	07-01-2022 Fri 12pm	07-01-2022 Fri 1pm	07-01-2022 Fri 2pm	07-01-2022 Fri 3pm	07-01-2022 Fri 4pm	07-01-2022 Fri 5pm	07-01-2022 Fri 6pm	07-01-2022 Fri 7pm	07-01-2022 Fri 8pm	07-01-2022 Fri 9pm	07-01-2022 Fri 10pm	07-01-2022 Fri 11pm	07-02-2022 Sat 12am	07-02-2022 Sat 1am	07-02-2022 Sat 2am	
Houston Pilots N - 610 Bridge	WS: 12 G:24 E	WS: 11 G:22 ENE	WS: 13 G:25 ESE	WS: 6 G:10 ESE	WS: 7 G:14 ESE	WS: 6 G:15 SE	WS: 5 G:15 E	WS: 7 G:17 E	WS: 5 G:17 E	WS: 3 G:15 ESE	WS: 4 G:17 SE	WS: 7 G:19 ESE	WS: 7 G:19 E	WS: 7 G:18 E	WS: 3 G:14 ESE	WS: 4 G:8 ESE	WS: 4 G:9 ESE	WS: 6 G:10 SE	WS: 8 G:12 SSE	WS: 7 G:12 SSE	WS: 7 G:13 SSE	WS: 7 G:13 S	WS: 7 G:12 S	WS: 7 G:14 S	WS: 7 G:15 S	WS: 7 G:14 SSE	WS: 8 G:15 SSE	WS: 8 G:15 SSE	WS: 8 G:15 SE	WS: 8 G:14 SE	WS: 7 G:13 SE	WS: 6 G:11 SSE	WS: 6 G:11 SSE	WS: 5 G:10 SSE	WS: 5 G:9 SSE	WS: 4 G:8 S	WS: 4 G:9 S
Houston Pilots M - Kinder 1	WS: 11 G:24 E	WS: 11 G:23 ENE	WS: 13 G:25 E	WS: 6 G:10 ESE	WS: 7 G:14 ESE	WS: 6 G:15 SE	WS: 6 G:16 E	WS: 7 G:18 E	WS: 6 G:18 E	WS: 3 G:15 ESE	WS: 3 G:17 SE	WS: 7 G:19 ESE	WS: 8 G:20 ESE	WS: 7 G:18 E	WS: 3 G:14 ESE	WS: 4 G:8 ESE	WS: 4 G:9 ESE	WS: 6 G:10 SE	WS: 8 G:12 SSE	WS: 7 G:12 SSE	WS: 8 G:13 SSE	WS: 7 G:13 S	WS: 7 G:13 S	WS: 7 G:14 S	WS: 7 G:15 S	WS: 7 G:14 SSE	WS: 8 G:15 SSE	WS: 8 G:15 SSE	WS: 8 G:15 SE	WS: 7 G:14 SE	WS: 6 G:12 SE	WS: 6 G:11 SSE	WS: 5 G:10 SSE	WS: 5 G:9 SSE	WS: 4 G:8 S	WS: 3 G:9 S	
Houston Pilots L - Greens Bayou	WS: 11 G:24 E	WS: 12 G:25 E	WS: 11 G:23 ESE	WS: 6 G:10 ESE	WS: 7 G:17 ESE	WS: 6 G:16 ESE	WS: 7 G:18 E	WS: 7 G:18 E	WS: 7 G:20 ESE	WS: 4 G:15 E	WS: 3 G:16 SE	WS: 8 G:20 ESE	WS: 9 G:21 ESE	WS: 8 G:20 ESE	WS: 3 G:13 ESE	WS: 4 G:8 ESE	WS: 4 G:9 SE	WS: 6 G:11 SE	WS: 8 G:13 SSE	WS: 7 G:13 SSE	WS: 8 G:13 S	WS: 7 G:13 S	WS: 8 G:13 S	WS: 7 G:14 SSE	WS: 8 G:15 SSE	WS: 8 G:14 SSE	WS: 8 G:15 SSE	WS: 8 G:15 SSE	WS: 8 G:14 SE	WS: 7 G:13 SE	WS: 6 G:12 SSE	WS: 5 G:11 SSE	WS: 5 G:10 SSE	WS: 4 G:8 S	WS: 4 G:9 S		
Houston Pilots K - Shell Crude	WS: 10 G:24 E	WS: 13 G:26 E	WS: 10 G:21 ESE	WS: 6 G:11 SE	WS: 8 G:16 ESE	WS: 6 G:16 ESE	WS: 7 G:18 E	WS: 7 G:18 E	WS: 7 G:20 ESE	WS: 4 G:16 ESE	WS: 4 G:17 SE	WS: 8 G:20 ESE	WS: 9 G:21 ESE	WS: 9 G:20 ESE	WS: 4 G:14 ESE	WS: 4 G:8 ESE	WS: 5 G:10 SSE	WS: 6 G:11 SSE	WS: 8 G:13 SSE	WS: 8 G:13 SSE	WS: 8 G:13 SSE	WS: 8 G:14 S	WS: 8 G:13 S	WS: 8 G:14 S	WS: 8 G:16 SSE	WS: 8 G:15 SSE	WS: 9 G:16 SSE	WS: 8 G:15 SSE	WS: 8 G:14 SE	WS: 7 G:13 SE	WS: 6 G:12 SSE	WS: 6 G:11 SSE	WS: 5 G:10 SSE	WS: 5 G:9 S	WS: 4 G:8 S	WS: 4 G:10 S	
Houston Pilots J - Lynchburg Ferries	WS: 10 G:24 E	WS: 12 G:25 ESE	WS: 10 G:21 ESE	WS: 6 G:12 SE	WS: 8 G:18 ESE	WS: 7 G:17 ESE	WS: 7 G:19 E	WS: 7 G:18 E	WS: 8 G:22 ESE	WS: 5 G:17 SE	WS: 5 G:17 SE	WS: 8 G:20 ESE	WS: 10 G:22 ESE	WS: 10 G:22 ESE	WS: 4 G:14 ESE	WS: 4 G:9 SE	WS: 5 G:11 SSE	WS: 6 G:12 SSE	WS: 8 G:14 SSE	WS: 8 G:13 SSE	WS: 8 G:13 S	WS: 8 G:14 S	WS: 9 G:14 S	WS: 9 G:14 S	WS: 9 G:16 SSE	WS: 8 G:15 SSE	WS: 9 G:16 SSE	WS: 9 G:14 SE	WS: 9 G:14 SE	WS: 8 G:13 SE	WS: 7 G:12 SSE	WS: 6 G:11 SSE	WS: 5 G:10 SSE	WS: 5 G:11 S	WS: 5 G:10 S	WS: 5 G:10 S	
Houston Pilots I - Exxon 3	WS: 11 G:24 E	WS: 14 G:27 ESE	WS: 10 G:18 ESE	WS: 7 G:13 SE	WS: 8 G:16 E	WS: 8 G:17 E	WS: 8 G:19 E	WS: 8 G:19 ESE	WS: 10 G:23 ESE	WS: 7 G:18 ESE	WS: 7 G:18 SE	WS: 10 G:23 ESE	WS: 10 G:22 ESE	WS: 11 G:19 ESE	WS: 7 G:16 ESE	WS: 6 G:11 SSE	WS: 6 G:12 SSE	WS: 7 G:13 SSE	WS: 9 G:15 SSE	WS: 9 G:13 SSE	WS: 9 G:14 SSE	WS: 9 G:14 S	WS: 9 G:14 S	WS: 10 G:15 S	WS: 9 G:16 SSE	WS: 9 G:15 SSE	WS: 9 G:15 SSE	WS: 9 G:15 SSE	WS: 9 G:15 SE	WS: 8 G:14 SE	WS: 7 G:12 SSE	WS: 6 G:11 SSE	WS: 6 G:13 SSE	WS: 6 G:12 S	WS: 6 G:13 S	WS: 6 G:12 S	
Houston Pilots H - Morgans Point	WS: 15 G:25 E	WS: 21 G:31 SE	WS: 12 G:18 ESE	WS: 9 G:15 SE	WS: 9 G:15 ESE	WS: 11 G:17 ESE	WS: 12 G:19 E	WS: 12 G:20 ESE	WS: 14 G:22 SE	WS: 11 G:18 SE	WS: 12 G:18 SE	WS: 11 G:18 SE	WS: 14 G:22 ESE	WS: 10 G:14 SE	WS: 12 G:18 SE	WS: 8 G:13 S	WS: 8 G:15 S	WS: 8 G:15 SSE	WS: 9 G:16 SSE	WS: 10 G:15 S	WS: 10 G:15 S	WS: 10 G:15 S	WS: 10 G:15 S	WS: 10 G:15 S	WS: 10 G:16 S	WS: 10 G:15 SSE	WS: 10 G:15 SSE	WS: 10 G:15 SSE	WS: 10 G:16 SSE	WS: 9 G:15 SSE	WS: 9 G:15 SSE	WS: 9 G:15 SSE	WS: 8 G:14 SSE	WS: 8 G:14 S	WS: 8 G:15 S		
Houston Pilots G - 75/76	WS: 22 G:25 ENE	WS: 28 G:33 SE	WS: 16 G:18 SE	WS: 13 G:16 SE	WS: 13 G:15 ESE	WS: 16 G:17 ESE	WS: 17 G:19 E	WS: 20 G:23 ESE	WS: 19 G:22 SE	WS: 18 G:20 SE	WS: 17 G:19 SE	WS: 17 G:20 ESE	WS: 19 G:22 ESE	WS: 9 G:10 ESE	WS: 14 G:15 SSE	WS: 10 G:16 SSE	WS: 10 G:17 S	WS: 10 G:17 S	WS: 11 G:18 S	WS: 11 G:17 S	WS: 11 G:16 S	WS: 11 G:16 S	WS: 10 G:16 S	WS: 10 G:16 S	WS: 10 G:16 S	WS: 10 G:15 SSE	WS: 10 G:15 SSE	WS: 10 G:16 SSE	WS: 11 G:17 SSE	WS: 11 G:17 SSE	WS: 11 G:17 SSE	WS: 11 G:17 SSE	WS: 11 G:17 SSE	WS: 11 G:16 S	WS: 10 G:16 S	WS: 11 G:18 S	
Houston Pilots F - 63/64	WS: 20 G:22 E	WS: 28 G:32 E	WS: 16 G:18 SE	WS: 15 G:19 SE	WS: 14 G:15 ESE	WS: 16 G:17 ESE	WS: 18 G:20 ESE	WS: 24 G:27 ESE	WS: 19 G:23 SE	WS: 20 G:22 SE	WS: 18 G:20 ESE	WS: 21 G:23 ESE	WS: 19 G:22 ESE	WS: 11 G:12 SSE	WS: 11 G:12 S	WS: 11 G:17 S	WS: 11 G:18 S	WS: 11 G:18 S	WS: 12 G:19 S	WS: 12 G:18 S	WS: 12 G:17 S	WS: 12 G:17 S	WS: 11 G:16 S	WS: 11 G:16 S	WS: 11 G:16 S	WS: 11 G:15 S	WS: 11 G:15 SSE	WS: 11 G:16 SSE	WS: 11 G:17 SSE	WS: 12 G:17 SSE	WS: 12 G:17 SSE	WS: 12 G:17 SSE	WS: 12 G:18 SSE	WS: 12 G:17 S	WS: 12 G:17 S	WS: 12 G:17 S	WS: 12 G:18 S
Houston Pilots E - 51/52	WS: 19 G:21 SE	WS: 26 G:28 ESE	WS: 16 G:18 ESE	WS: 15 G:19 SE	WS: 15 G:16 ESE	WS: 16 G:17 ESE	WS: 18 G:19 ESE	WS: 26 G:28 ESE	WS: 22 G:24 SE	WS: 21 G:22 SSE	WS: 15 G:18 ESE	WS: 22 G:23 ESE	WS: 16 G:19 ESE	WS: 7 G:8 SE	WS: 12 G:17 S	WS: 12 G:19 SSE	WS: 12 G:18 S	WS: 12 G:19 S	WS: 13 G:19 SSW	WS: 13 G:18 S	WS: 13 G:18 S	WS: 12 G:17 S	WS: 11 G:16 S	WS: 11 G:16 S	WS: 11 G:16 S	WS: 12 G:15 S	WS: 12 G:16 SSE	WS: 12 G:16 SSE	WS: 12 G:17 SSE	WS: 12 G:17 SSE	WS: 12 G:17 SSE	WS: 12 G:18 SSE	WS: 13 G:18 S	WS: 13 G:18 S	WS: 13 G:18 S	WS: 13 G:18 S	
Houston Pilots D - 37/38	WS: 20 G:24 SE	WS: 21 G:22 ESE	WS: 13 G:16 SE	WS: 14 G:17 SE	WS: 14 G:15 E	WS: 15 G:16 ESE	WS: 16 G:17 ESE	WS: 23 G:28 SE	WS: 19 G:25 SE	WS: 18 G:20 SE	WS: 13 G:18 ESE	WS: 18 G:20 ESE	WS: 13 G:18 ESE	WS: 9 G:11 ENE	WS: 6 G:8 E	WS: 13 G:18 S	WS: 13 G:19 S	WS: 12 G:19 S	WS: 13 G:20 S	WS: 13 G:19 SSW	WS: 13 G:18 SSW	WS: 13 G:18 SSW	WS: 12 G:17 SSW	WS: 12 G:16 S	WS: 12 G:16 S	WS: 12 G:16 S	WS: 12 G:16 SSE	WS: 12 G:17 SSE	WS: 13 G:17 SSE	WS: 13 G:17 SSE	WS: 13 G:17 SSE	WS: 13 G:18 S	WS: 13 G:18 S	WS: 14 G:18 S	WS: 14 G:19 S		
Houston Pilots C - 25/26	WS: 19 G:27 SE	WS: 16 G:19 ESE	WS: 11 G:15 SE	WS: 12 G:16 SE	WS: 12 G:13 E	WS: 14 G:16 ESE	WS: 15 G:18 ESE	WS: 20 G:27 SE	WS: 17 G:24 SSE	WS: 13 G:18 ESE	WS: 12 G:19 ESE	WS: 11 G:17 ESE	WS: 11 G:18 ESE	WS: 7 G:9 ENE	WS: 14 G:20 S	WS: 13 G:20 S	WS: 12 G:19 S	WS: 13 G:20 S	WS: 13 G:20 SSW	WS: 13 G:19 SSW	WS: 13 G:18 SSW	WS: 12 G:17 SSW	WS: 12 G:16 S	WS: 12 G:16 S	WS: 12 G:16 S	WS: 12 G:16 S	WS: 12 G:16 SSE	WS: 13 G:17 SSE	WS: 12 G:17 SSE	WS: 12 G:17 SSE	WS: 12 G:17 SSE	WS: 13 G:18 S	WS: 13 G:18 S	WS: 13 G:18 S	WS: 14 G:19 S		
Houston Pilots B - 11/12	WS: 23 G:30 SE	WS: 15 G:18 ESE	WS: 12 G:16 ESE	WS: 12 G:14 SE	WS: 11 G:14 ESE	WS: 15 G:17 ESE	WS: 15 G:17 ESE	WS: 21 G:27 SE	WS: 17 G:22 SSE	WS: 14 G:21 ESE	WS: 15 G:19 SE	WS: 16 G:19 ESE	WS: 12 G:18 SE	WS: 8 G:10 ENE	WS: 15 G:20 SSW	WS: 14 G:20 SSW	WS: 13 G:19 S	WS: 14 G:20 SSW	WS: 14 G:19 SSW	WS: 14 G:18 SSW	WS: 14 G:18 SSW	WS: 12 G:17 SSW	WS: 12 G:16 S	WS: 12 G:16 S	WS: 12 G:16 S	WS: 13 G:17 SSE	WS: 13 G:17 SSE	WS: 13 G:17 SSE	WS: 13 G:17 SSE	WS: 13 G:17 SSE	WS: 13 G:17 SSE	WS: 13 G:18 S	WS: 13 G:18 S	WS: 14 G:18 S	WS: 14 G:19 S		
Houston Pilots A - 1 & 2 Bravo	WS: 25 G:30 SSE	WS: 20 G:21 SE	WS: 10 G:14 ESE	WS: 12 G:13 ESE	WS: 13 G:14 ESE	WS: 17 G:18 ESE	WS: 19 G:19 ESE	WS: 22 G:26 SE	WS: 16 G:21 SE	WS: 14 G:19 SE	WS: 24 G:26 ESE	WS: 20 G:21 SSE	WS: 10 G:16 SE	WS: 13 G:15 SSW	WS: 11 G:16 SSW	WS: 16 G:21 G:20	WS: 16 G:20 G:20	WS: 15 G:19 SSW	WS: 16 G:20 SSW	WS: 14 G:19 SSW	WS: 14 G:19 SSW	WS: 15 G:19 SSW	WS: 13 G:17 S	WS: 13 G:16 S	WS: 13 G:16 S	WS: 13 G:16 S	WS: 13 G:17 S	WS: 13 G:17 S	WS: 14 G:17 SSE	WS: 14 G:17 SSE	WS: 14 G:17 SSE	WS: 14 G:18 SSE	WS: 15 G:19 S	WS: 15 G:19 S	WS: 15 G:19 S	WS: 16 G:19 S	

See slides below for official thoughts on winds.

Houston Pilots: Thu. 6/30/2022

Forecast Discussion

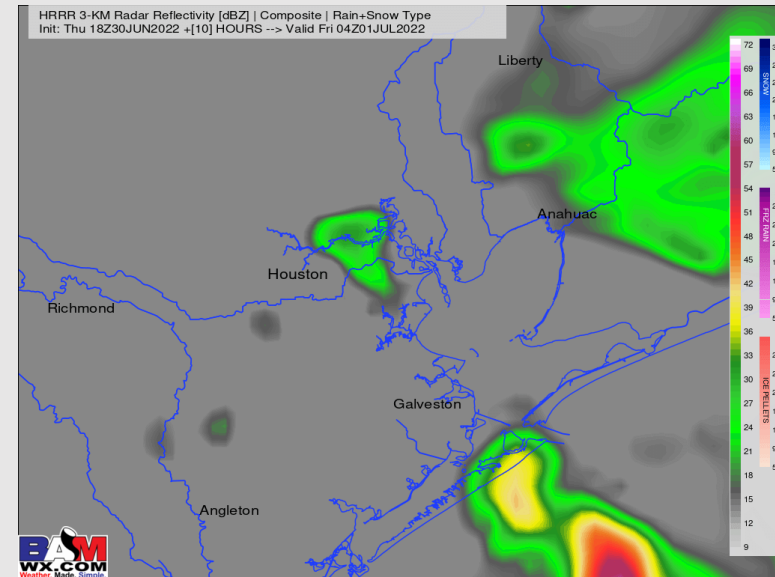
Precip: Widespread scattered showers and storms continuing across the Houston/Galveston area. Favoring 50%-70% chances to continue through the rest of evening into overnight period. While brief breaks in the moderate/heavy precipitation will be possible as we get into the 8PM-12AM time frame, overall chances will remain high for an additional 1-2 inches of rain across the area through tomorrow morning.

Wind: Wind vectors will continue to be highly variable as tropical activity moves further inland. Would favor a “general” wind of 15-20 MPH with gusts of up to 25-30 MPH possible from the SE. Inside of pockets of precip, gusts of 30-35 MPH cannot be ruled out under the strongest of storms as system continues to move inland this evening.

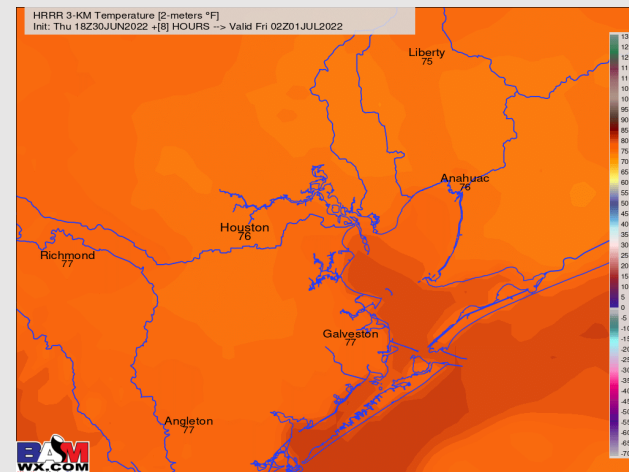
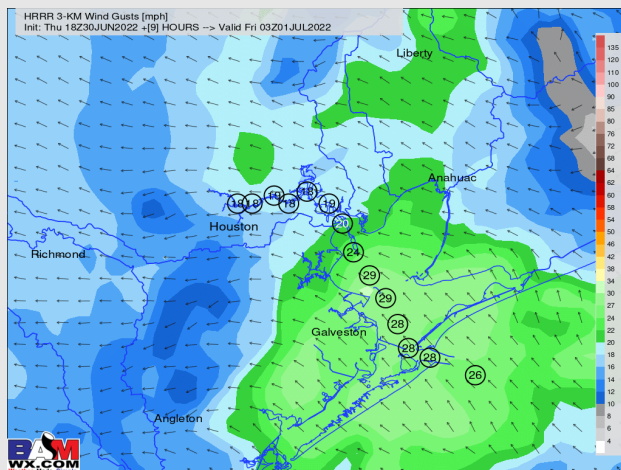
Temps: Highs reach the upper 80s F and low 90s F for most stations.

Visibility: Not anticipating any fog concerns at this time, but heavy rains could limit visibility at times.

Precip Forecast: 11 PM CT



Wind Gusts 10 PM CT



Temps 9PM CT

Houston Pilots: Fri. 7/1/2022

Forecast Discussion

Precip: Heavy Rain/Storm chances will continue through Friday morning, with coverage gradually decreasing into the afternoon. Scattered showers and thunderstorms will continue to be possible into the early afternoon. As system progresses farther north into central Texas, precip chances will be below 10% by late afternoon/early evening for the Houston/Galveston area. Scattered shower/storm chances will begin to increase again after 10PM-CT into Saturday morning.

Wind: "General" winds look to remain 15-20 MPH out of the S/SSE throughout the day on Friday with gusts up to 25 MPH possible. Wind gusts favored to be 25-30 MPH inside the strongest cells. Stations north of Morgan's Point likely see slightly weaker winds as system progresses further northward.

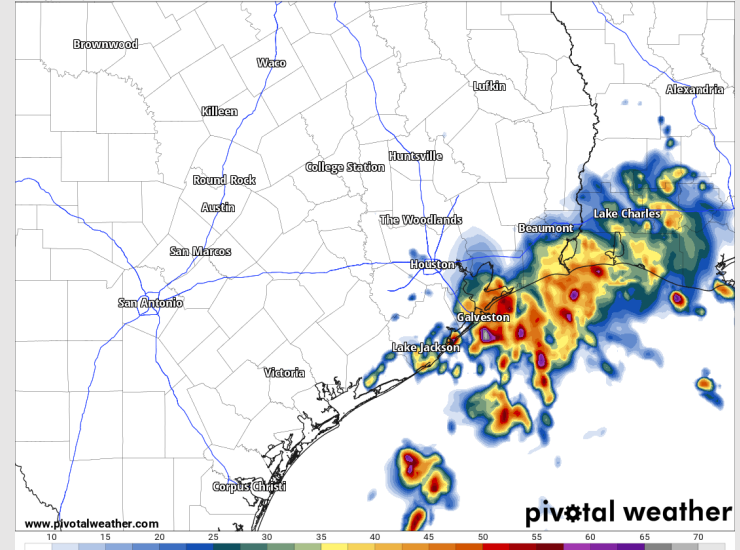
Temps: Temps to reach the lower to mid 80's.

Visibility: No fog conditions anticipated at this time.

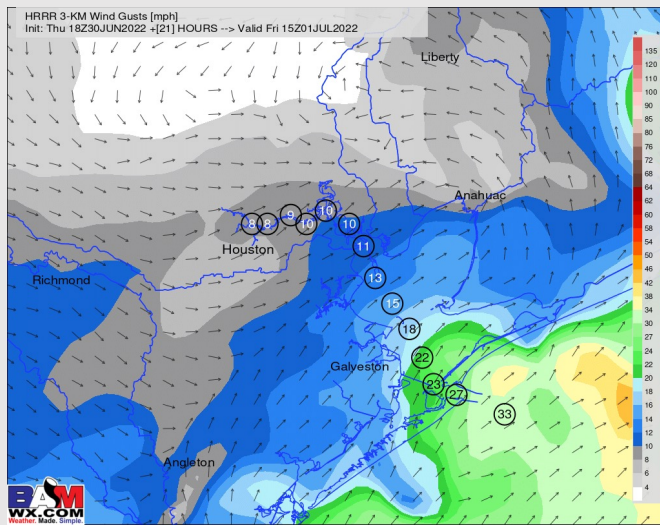
Precip Forecast: 5 AM CT

Composite Reflectivity (dBZ)
Friday, Jul. 1, 2022 at 5 a.m. CDT

Init: Thu 2022-06-30 18z HRRR

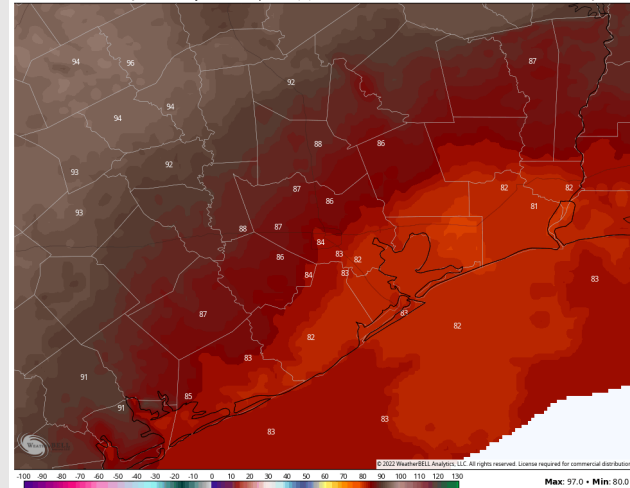


Wind Gusts 10 AM CT



NDFD 2.5 km Init 20z 30 Jun 2022 • Daily Max, 2m Temperature (°F)

Valid: Thu 30 Jun 2022



High Temps Friday

Houston Pilots: sat. 7/2/2022

Forecast Discussion

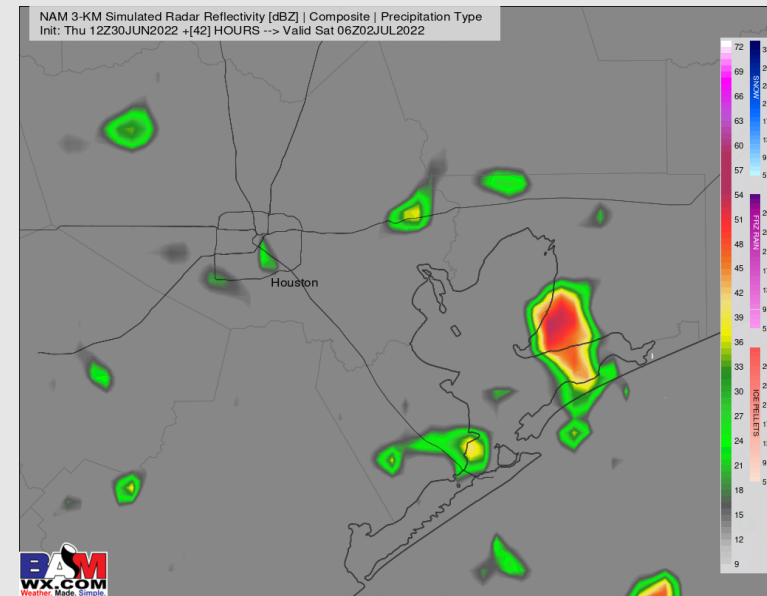
Precip: Scattered showers will be possible early Saturday morning through 10AM, before becoming more isolated for the afternoon hours.

Wind: Winds likely continue at 13-18MPH out of the SW through 8AM, veering S at 10-15MPH from 8AM into Saturday evening. An occasional gust of up to 25MPH will be possible during the morning hours.

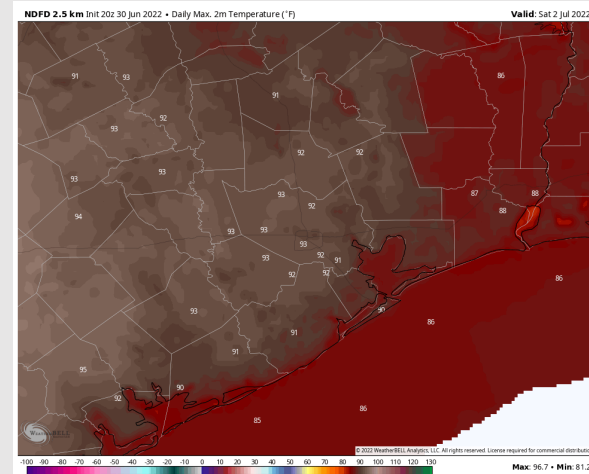
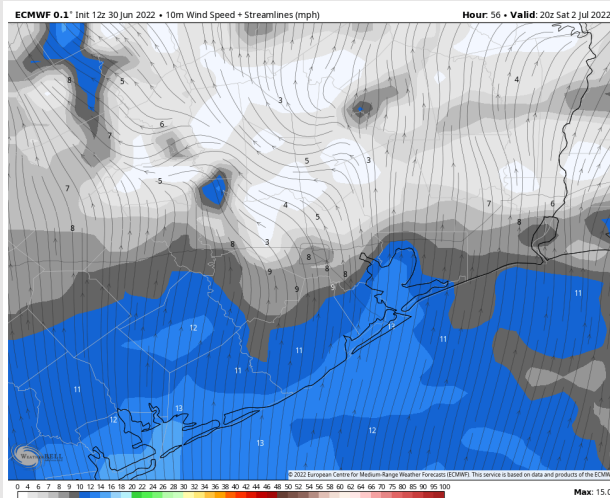
Temps: High temps anticipated to be in the upper 80's, lower 90's.

Visibility: Not anticipating fog at this time for our stations.

Precip Forecast: 1 AM CT

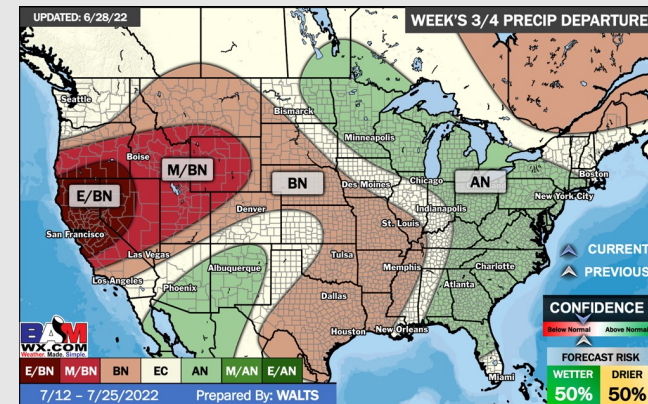
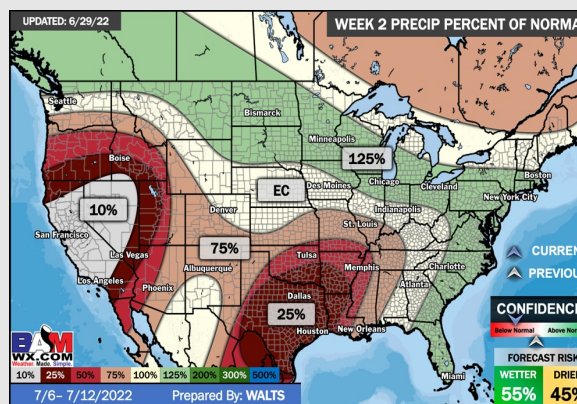
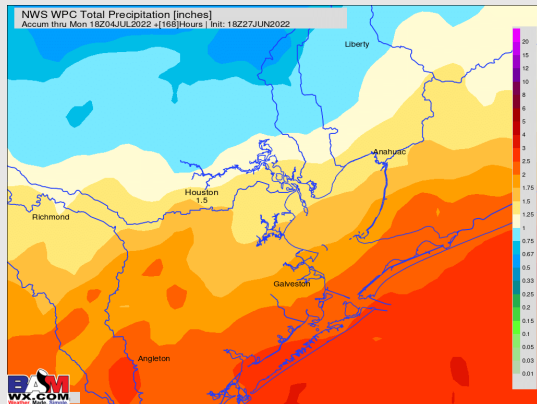
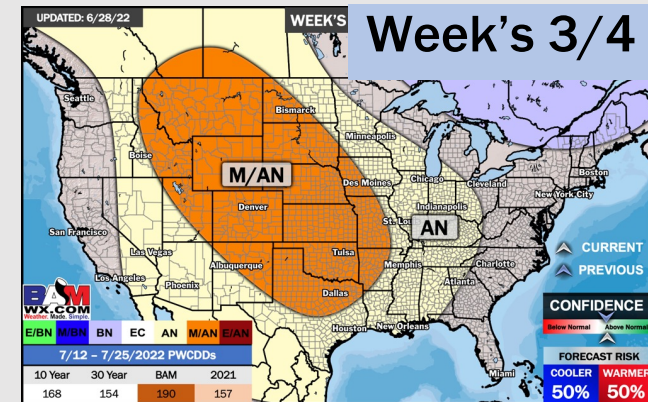
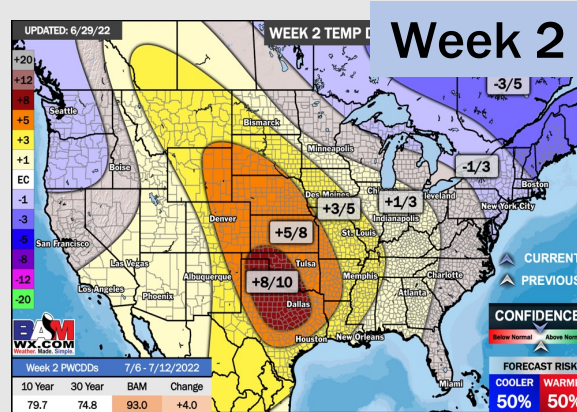
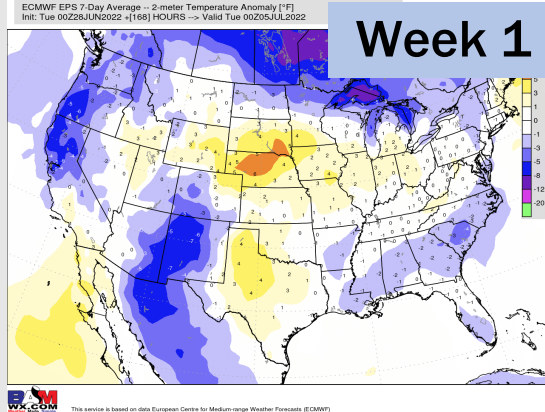


Wind Speed:
3 PM CT



High Temps
Sat

Houston Pilots: 6/30/22



- Multiple shots of precipitation will be possible this week with a much more active pattern vs the last few weeks. This will also help keep temperatures much closer to normal.
- Week 2 likely features above normal risks for temperatures and below normal precipitation risks.
- The weeks 3/4 timeframe into July looks to feature above normal temperatures and below normal risks for precip.