

Houston Pilots Forecast Package



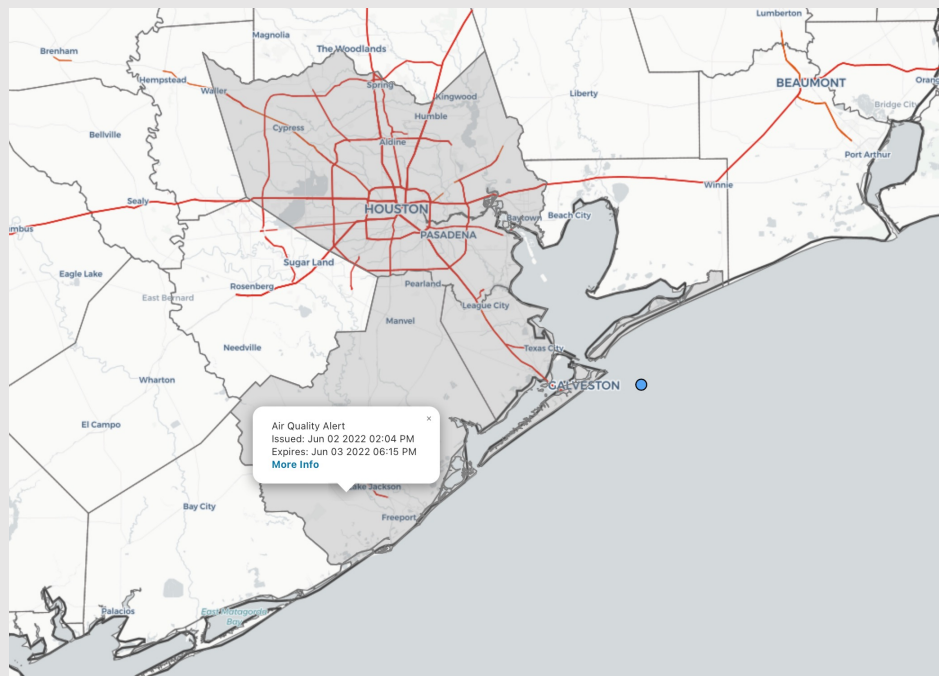
Updated: 5:00 AM CT

Friday, June 3rd, 2022

Forecaster: Vince Bryan

Weather Headlines

- ***With sea/marine fog season all but over, we will be transitioning from a long term fog slide to hurricane slides (see below)***
- Minor chances over the next few days with the possibility of some scattered storms before a drier early next week.
- No tropical threats being noted in the forecast for the HOU area. There is an area of interest we are watching E the Yucatan – however this will be well East of E TX and is not a concern for the area.



Radar/ NWS Alerts: 5:00 AM CT

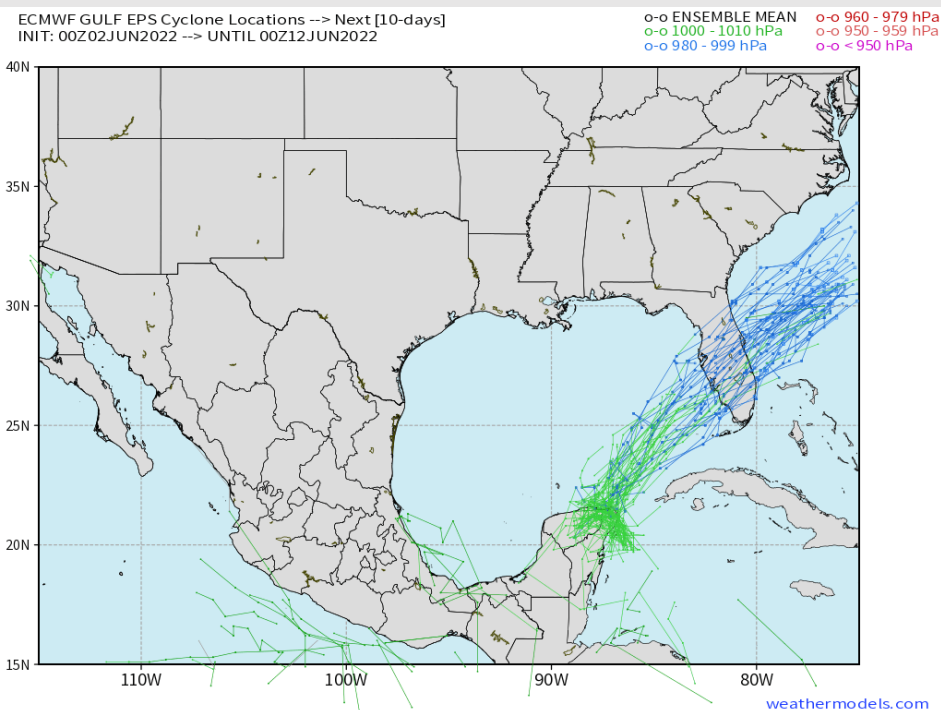


As always, please do not hesitate to reach out to us with any forecast questions via the chat option on the Weather Porthole or our on-call number, **(317)-560-8122** press 1 for forecast questions.

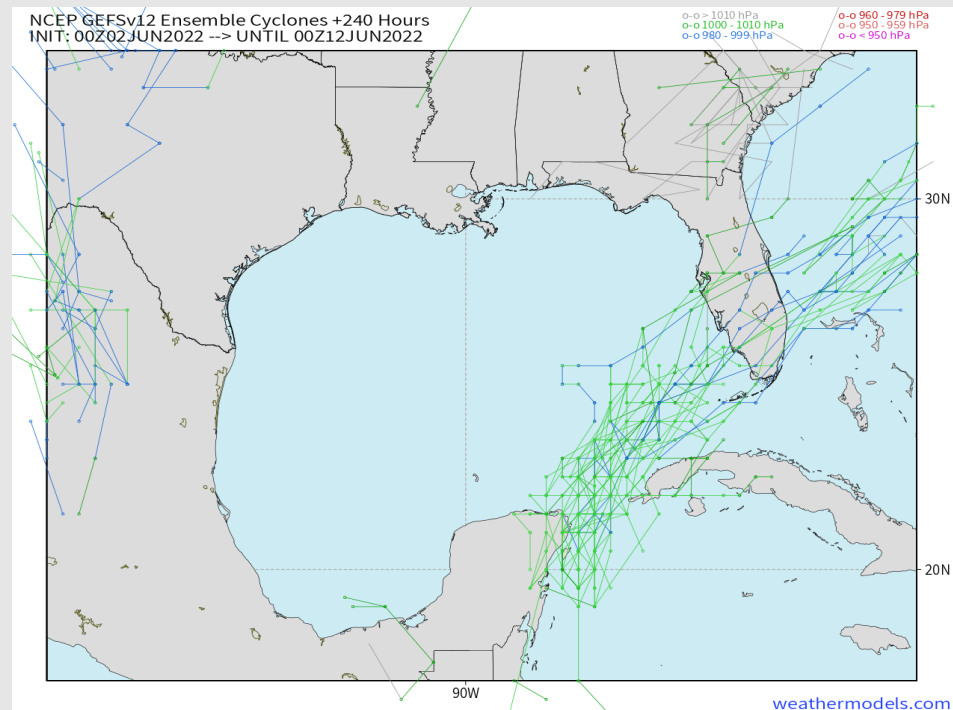
Houston Pilots Extended Range Tropical Report

Tropical Model Tracks the Next 10 Days

European Data



American Data



We currently do not see any tropical threats for E TX over the next 7-10 days. A tropical system near the Yucatan will continue to move Northeast toward Florida and not be a concern for the Western Gulf. Confidence is higher than normal of no threats over the next week

Confidence

Above
Normal

Below
Normal

Houston Pilots Visibility Report



Time	06-03-2022 Fri 4am	06-03-2022 Fri 5am	06-03-2022 Fri 6am	06-03-2022 Fri 7am	06-03-2022 Fri 8am	06-03-2022 Fri 9am	06-03-2022 Fri 10am	06-03-2022 Fri 11am	06-03-2022 Fri 12pm	06-03-2022 Fri 1pm	06-03-2022 Fri 2pm	06-03-2022 Fri 3pm	06-03-2022 Fri 4pm	06-03-2022 Fri 5pm	06-03-2022 Fri 6pm	06-03-2022 Fri 7pm	06-03-2022 Fri 8pm	06-03-2022 Fri 9pm	06-03-2022 Fri 10pm	06-03-2022 Fri 11pm	06-04-2022 Sat 12am	06-04-2022 Sat 1am	06-04-2022 Sat 2am	06-04-2022 Sat 3am	06-04-2022 Sat 4am	06-04-2022 Sat 5am	06-04-2022 Sat 6am	06-04-2022 Sat 7am	06-04-2022 Sat 8am	06-04-2022 Sat 9am	06-04-2022 Sat 10am	06-04-2022 Sat 11am	
Houston Pilots N - 610 Bridge	10.000	10.000	10.000	10.000	10.000	10.000	10.000	10.000	10.000	7.528	6.844	9.711	10.000	10.000	10.000	10.000	10.000	10.000	10.000	10.000	10.000	10.000	10.000	10.000	10.000	10.000	9.967	9.693	10.000	10.000	10.000	10.000	
Houston Pilots M - Kinder 1	10.000	10.000	10.000	10.000	10.000	10.000	10.000	10.000	10.000	7.593	7.455	9.055	10.000	10.000	10.000	10.000	10.000	10.000	10.000	10.000	10.000	10.000	10.000	10.000	10.000	10.000	9.929	9.657	10.000	10.000	10.000	10.000	
Houston Pilots L - Greens Bayou	10.000	10.000	10.000	10.000	10.000	10.000	10.000	10.000	10.000	7.819	8.693	8.362	10.000	10.000	10.000	10.000	10.000	10.000	10.000	10.000	10.000	10.000	10.000	10.000	10.000	10.000	9.764	9.558	10.000	10.000	10.000	10.000	
Houston Pilots K - Shell Crude	9.935	9.989	9.766	9.900	10.000	10.000	10.000	10.000	10.000	7.109	10.000	9.562	10.000	10.000	10.000	10.000	10.000	10.000	10.000	10.000	10.000	10.000	10.000	10.000	10.000	10.000	9.726	9.526	10.000	10.000	10.000	10.000	
Houston Pilots J - Lynchburg Ferries	10.000	9.910	9.552	9.806	10.000	10.000	10.000	10.000	10.000	7.170	10.000	9.755	10.000	10.000	10.000	10.000	10.000	10.000	10.000	10.000	10.000	10.000	10.000	10.000	10.000	10.000	9.866	9.560	9.389	10.000	10.000	10.000	10.000
Houston Pilots I - Exxon 3	9.871	9.906	9.651	9.898	10.000	10.000	10.000	10.000	10.000	7.863	10.000	10.000	10.000	10.000	10.000	10.000	10.000	10.000	10.000	10.000	10.000	10.000	10.000	10.000	10.000	10.000	9.946	9.675	9.505	10.000	10.000	10.000	10.000
Houston Pilots H - Morgans Point	9.958	10.000	10.000	10.000	10.000	10.000	10.000	10.000	10.000	9.277	10.000	10.000	10.000	10.000	10.000	10.000	10.000	10.000	10.000	10.000	10.000	10.000	10.000	10.000	10.000	10.000	10.000	9.883	10.000	10.000	10.000	10.000	
Houston Pilots G - 75/76	9.930	10.000	10.000	10.000	10.000	10.000	10.000	10.000	10.000	10.000	10.000	10.000	10.000	10.000	10.000	10.000	10.000	10.000	10.000	10.000	10.000	10.000	10.000	10.000	10.000	10.000	10.000	10.000	10.000	10.000	10.000	10.000	
Houston Pilots F - 63/64	9.959	10.000	10.000	10.000	10.000	10.000	10.000	10.000	10.000	10.000	10.000	10.000	10.000	10.000	10.000	10.000	10.000	10.000	10.000	10.000	10.000	10.000	10.000	10.000	10.000	10.000	10.000	10.000	10.000	10.000	10.000	10.000	
Houston Pilots E - 51/52	9.895	10.000	10.000	10.000	10.000	10.000	10.000	10.000	10.000	10.000	10.000	10.000	10.000	10.000	10.000	10.000	10.000	10.000	10.000	10.000	10.000	10.000	10.000	10.000	10.000	10.000	10.000	10.000	10.000	9.790	10.000	10.000	10.000
Houston Pilots D - 37/38	9.437	10.000	10.000	10.000	10.000	10.000	10.000	10.000	10.000	10.000	10.000	10.000	10.000	10.000	10.000	10.000	10.000	10.000	10.000	10.000	10.000	10.000	10.000	10.000	10.000	10.000	10.000	10.000	9.026	10.000	10.000	10.000	10.000
Houston Pilots C - 25/26	9.423	9.979	10.000	10.000	10.000	10.000	10.000	10.000	10.000	10.000	10.000	10.000	10.000	10.000	10.000	10.000	10.000	10.000	10.000	10.000	10.000	10.000	10.000	10.000	10.000	10.000	10.000	10.000	8.476	10.000	10.000	10.000	10.000
Houston Pilots B - 11/12	9.588	10.000	10.000	10.000	10.000	10.000	10.000	10.000	10.000	10.000	10.000	10.000	10.000	10.000	10.000	10.000	10.000	10.000	10.000	10.000	10.000	10.000	10.000	10.000	10.000	10.000	10.000	10.000	7.907	10.000	10.000	10.000	10.000
Houston Pilots A - 1 & 2 Bravo	10.000	10.000	10.000	10.000	10.000	10.000	10.000	10.000	10.000	10.000	10.000	10.000	10.000	10.000	10.000	10.000	10.000	10.000	10.000	10.000	10.000	10.000	10.000	10.000	10.000	10.000	10.000	10.000	8.494	10.000	10.000	10.000	10.000

Houston Pilots Wind Report



Time	06-03-2022 Fri 4am	06-03-2022 Fri 5am	06-03-2022 Fri 6am	06-03-2022 Fri 7am	06-03-2022 Fri 8am	06-03-2022 Fri 9am	06-03-2022 Fri 10am	06-03-2022 Fri 11am	06-03-2022 Fri 12pm	06-03-2022 Fri 1pm	06-03-2022 Fri 2pm	06-03-2022 Fri 3pm	06-03-2022 Fri 4pm	06-03-2022 Fri 5pm	06-03-2022 Fri 6pm	06-03-2022 Fri 7pm	06-03-2022 Fri 8pm	06-03-2022 Fri 9pm	06-03-2022 Fri 10pm	06-03-2022 Fri 11pm	06-04-2022 Sat 12am	06-04-2022 Sat 1am	06-04-2022 Sat 2am	06-04-2022 Sat 3am	06-04-2022 Sat 4am	06-04-2022 Sat 5am	06-04-2022 Sat 6am	06-04-2022 Sat 7am	06-04-2022 Sat 8am	06-04-2022 Sat 9am	06-04-2022 Sat 10am	06-04-2022 Sat 11am	
Houston Pilots N - 610 Bridge	WS: 4 G:7 ENE	WS: 4 G:8 SSW	WS: 4 G:10 W	WS: 5 G:12 NW	WS: 7 G:13 N	WS: 7 G:10 N	WS: 7 G:10 NNE	WS: 8 G:13 N	WS: 8 G:15 NNE	WS: 9 G:13 NNE	WS: 9 G:14 NNE	WS: 8 G:11 NNE	WS: 8 G:10 NE	WS: 8 G:11 NE	WS: 8 G:11 NNE	WS: 8 G:12 NE	WS: 7 G:10 ENE	WS: 6 G:9 ENE	WS: 5 G:8 E	WS: 4 G:6 ESE	WS: 3 G:5 ESE	WS: 2 G:4 E	WS: 2 G:4 NE	WS: 2 G:4 NNE	WS: 2 G:3 NNE	WS: 2 G:3 NNE	WS: 2 G:3 NNE	WS: 2 G:3 NE	WS: 3 G:4 NE	WS: 3 G:3 NE	WS: 5 G:5 NE	WS: 4 G:5 NE	WS: 4 G:6 NE
Houston Pilots M - Kinder 1	WS: 4 G:7 SSE	WS: 4 G:8 WNW	WS: 4 G:9 WNW	WS: 5 G:12 NW	WS: 7 G:13 N	WS: 7 G:10 N	WS: 7 G:10 NNE	WS: 8 G:13 NNE	WS: 8 G:15 NNE	WS: 9 G:13 NNE	WS: 9 G:14 NNE	WS: 8 G:11 NE	WS: 8 G:10 NE	WS: 8 G:11 NE	WS: 8 G:11 NNE	WS: 8 G:12 NE	WS: 6 G:10 ENE	WS: 6 G:9 ENE	WS: 5 G:8 E	WS: 4 G:6 ESE	WS: 3 G:5 ESE	WS: 2 G:4 E	WS: 2 G:4 NE	WS: 2 G:4 NNE	WS: 2 G:3 NNE	WS: 2 G:3 NNE	WS: 2 G:3 NNE	WS: 2 G:3 NE	WS: 4 G:3 NE	WS: 5 G:5 NE	WS: 4 G:5 NE	WS: 4 G:6 NE	
Houston Pilots L - Greens Bayou	WS: 4 G:7 NW	WS: 4 G:8 NNW	WS: 4 G:9 SW	WS: 5 G:12 NNW	WS: 7 G:14 N	WS: 7 G:10 N	WS: 7 G:11 NNE	WS: 8 G:13 NNE	WS: 8 G:15 NNE	WS: 9 G:14 NNE	WS: 9 G:14 NNE	WS: 9 G:12 NNE	WS: 8 G:10 E	WS: 8 G:11 NNE	WS: 8 G:11 NNE	WS: 8 G:12 NE	WS: 6 G:10 NE	WS: 6 G:9 ENE	WS: 4 G:7 E	WS: 4 G:6 E	WS: 3 G:5 E	WS: 2 G:4 ENE	WS: 2 G:4 NE	WS: 2 G:3 NNE	WS: 2 G:3 NNE	WS: 2 G:3 NNE	WS: 2 G:3 NNE	WS: 2 G:3 NNE	WS: 4 G:4 NE	WS: 5 G:5 NE	WS: 4 G:5 NE	WS: 4 G:6 NE	
Houston Pilots K - Shell Crude	WS: 4 G:7 NNW	WS: 4 G:9 NNW	WS: 4 G:10 SSE	WS: 5 G:12 W	WS: 7 G:15 N	WS: 7 G:11 N	WS: 7 G:11 NNE	WS: 8 G:13 NNE	WS: 8 G:15 NNE	WS: 9 G:14 NNE	WS: 9 G:14 NNE	WS: 9 G:12 NNE	WS: 8 G:10 E	WS: 8 G:11 NNE	WS: 8 G:11 NNE	WS: 8 G:11 NE	WS: 6 G:10 ENE	WS: 6 G:9 ENE	WS: 4 G:8 E	WS: 4 G:6 E	WS: 3 G:5 E	WS: 2 G:4 ENE	WS: 2 G:4 NNE	WS: 2 G:3 NNE	WS: 2 G:3 NNE	WS: 2 G:3 NNE	WS: 2 G:3 NNE	WS: 4 G:4 NNE	WS: 4 G:4 NE	WS: 5 G:5 NE	WS: 4 G:5 NE	WS: 4 G:6 NE	
Houston Pilots J - Lynchburg Ferries	WS: 4 G:6 NNW	WS: 4 G:9 NNW	WS: 4 G:10 ESE	WS: 5 G:12 WNW	WS: 7 G:15 N	WS: 7 G:11 N	WS: 7 G:11 NNE	WS: 9 G:13 NNE	WS: 8 G:15 N	WS: 9 G:13 NNE	WS: 9 G:14 NNE	WS: 9 G:12 NNE	WS: 8 G:10 ESE	WS: 8 G:11 NNE	WS: 9 G:11 NNE	WS: 9 G:12 NE	WS: 7 G:10 ENE	WS: 6 G:9 E	WS: 5 G:8 E	WS: 4 G:7 E	WS: 3 G:6 E	WS: 3 G:5 ENE	WS: 3 G:4 NNE	WS: 3 G:4 NNE	WS: 3 G:4 NNE	WS: 3 G:3 NNE	WS: 3 G:3 NNE	WS: 4 G:4 NNE	WS: 4 G:4 NE	WS: 6 G:6 NE	WS: 5 G:5 NE	WS: 4 G:5 NE	
Houston Pilots I - Exxon 3	WS: 4 G:7 NNW	WS: 4 G:9 NNW	WS: 4 G:11 WSW	WS: 5 G:13 SW	WS: 7 G:14 N	WS: 8 G:11 N	WS: 7 G:11 NNE	WS: 9 G:13 NNE	WS: 8 G:14 NNE	WS: 9 G:13 NNE	WS: 9 G:14 NNE	WS: 8 G:11 NNE	WS: 7 G:10 NNE	WS: 8 G:11 NNE	WS: 9 G:11 ENE	WS: 9 G:10 ENE	WS: 6 G:10 E	WS: 5 G:9 E	WS: 4 G:8 E	WS: 4 G:7 E	WS: 3 G:6 ENE	WS: 4 G:5 NE	WS: 4 G:5 NNE	WS: 3 G:4 NNE	WS: 4 G:5 NNE	WS: 4 G:5 NNE	WS: 5 G:6 NNE	WS: 5 G:5 NE	WS: 6 G:6 NE	WS: 6 G:6 NE	WS: 5 G:6 NE	WS: 5 G:6 NE	
Houston Pilots H - Morgans Point	WS: 5 G:8 NNW	WS: 6 G:10 NNW	WS: 6 G:12 SSW	WS: 7 G:14 E	WS: 9 G:15 N	WS: 8 G:12 ENE	WS: 8 G:12 ENE	WS: 9 G:13 NNE	WS: 8 G:12 NNE	WS: 9 G:14 NNE	WS: 9 G:12 NNE	WS: 8 G:11 NE	WS: 8 G:10 ENE	WS: 8 G:11 ENE	WS: 9 G:11 ENE	WS: 8 G:12 ENE	WS: 8 G:11 ENE	WS: 7 G:10 E	WS: 6 G:9 E	WS: 5 G:8 E	WS: 5 G:7 E	WS: 4 G:6 E	WS: 4 G:5 NNE	WS: 4 G:5 NNE	WS: 4 G:5 NNE	WS: 4 G:5 NNE	WS: 5 G:6 NNE	WS: 5 G:5 NE	WS: 6 G:6 NE	WS: 5 G:6 NE	WS: 5 G:6 NE	WS: 5 G:6 NE	
Houston Pilots G - 75/76	WS: 7 G:9 NNW	WS: 9 G:10 N	WS: 10 G:12 NNE	WS: 11 G:14 N	WS: 12 G:15 N	WS: 11 G:12 SSW	WS: 9 G:12 ENE	WS: 9 G:12 N	WS: 8 G:12 NNE	WS: 9 G:14 NE	WS: 10 G:13 ENE	WS: 9 G:13 ENE	WS: 10 G:13 E	WS: 11 G:13 ESE	WS: 10 G:13 ESE	WS: 9 G:12 E	WS: 8 G:12 ENE	WS: 8 G:12 E	WS: 7 G:11 ESE	WS: 6 G:10 ESE	WS: 6 G:9 ESE	WS: 5 G:8 ESE	WS: 5 G:7 NNE	WS: 5 G:7 NNE	WS: 5 G:6 NNE	WS: 5 G:6 NNE	WS: 6 G:7 NNE	WS: 6 G:7 NNE	WS: 6 G:7 NE	WS: 6 G:7 NE	WS: 5 G:6 NE	WS: 5 G:6 NE	
Houston Pilots F - 63/64	WS: 8 G:9 SSW	WS: 9 G:10 NW	WS: 11 G:11 ENE	WS: 12 G:13 N	WS: 14 G:15 N	WS: 13 G:12 SSE	WS: 10 G:12 NNE	WS: 9 G:13 NNE	WS: 8 G:13 NNE	WS: 10 G:15 NE	WS: 11 G:14 ENE	WS: 11 G:14 ENE	WS: 10 G:13 ENE	WS: 9 G:13 E	WS: 8 G:12 E	WS: 7 G:11 ESE	WS: 6 G:10 ESE	WS: 5 G:9 ESE	WS: 4 G:8 ESE	WS: 4 G:7 ESE	WS: 3 G:6 ESE	WS: 6 G:9 E	WS: 6 G:8 E	WS: 6 G:7 ENE	WS: 6 G:6 NNE	WS: 6 G:6 NNE	WS: 7 G:7 NNE	WS: 7 G:8 NNE	WS: 7 G:7 NNE	WS: 6 G:7 NE	WS: 6 G:7 NE	WS: 5 G:6 NE	WS: 5 G:6 NE
Houston Pilots E - 51/52	WS: 8 G:9 NE	WS: 9 G:10 SE	WS: 10 G:11 W	WS: 12 G:12 N	WS: 14 G:15 NNE	WS: 13 G:14 NNE	WS: 11 G:12 N	WS: 11 G:14 NE	WS: 10 G:13 NE	WS: 11 G:15 NNE	WS: 10 G:14 NE	WS: 9 G:12 SE	WS: 8 G:11 SE	WS: 9 G:12 ESE	WS: 8 G:11 ESE	WS: 7 G:10 ESE	WS: 6 G:9 ESE	WS: 5 G:8 ESE	WS: 4 G:7 ESE	WS: 3 G:6 ESE	WS: 6 G:9 E	WS: 6 G:8 E	WS: 6 G:7 ENE	WS: 6 G:6 NNE	WS: 6 G:6 NNE	WS: 6 G:6 NNE	WS: 7 G:7 NNE	WS: 7 G:8 NNE	WS: 7 G:7 NNE	WS: 7 G:7 NNE	WS: 6 G:7 NE	WS: 5 G:6 NE	
Houston Pilots D - 37/38	WS: 7 G:8 ENE	WS: 8 G:9 NNE	WS: 10 G:10 NW	WS: 11 G:11 NE	WS: 14 G:15 NNE	WS: 13 G:13 N	WS: 12 G:12 N	WS: 12 G:14 SE	WS: 11 G:14 SE	WS: 11 G:15 ESE	WS: 10 G:14 E	WS: 9 G:12 NNE	WS: 8 G:10 ESE	WS: 8 G:11 SE	WS: 10 G:11 SE	WS: 8 G:11 ESE	WS: 8 G:10 ESE	WS: 7 G:10 ESE	WS: 6 G:9 ESE	WS: 6 G:8 ESE	WS: 5 G:7 ESE	WS: 6 G:9 E	WS: 6 G:8 ENE	WS: 6 G:7 ENE	WS: 6 G:6 NNE	WS: 6 G:6 NNE	WS: 7 G:7 NNE	WS: 7 G:8 NNE	WS: 7 G:8 NNE	WS: 7 G:8 NNE	WS: 7 G:8 NNE	WS: 6 G:7 NE	WS: 5 G:6 NE
Houston Pilots C - 25/26	WS: 6 G:8 SE	WS: 8 G:9 NNE	WS: 9 G:10 S	WS: 9 G:11 SE	WS: 13 G:14 N	WS: 12 G:13 N	WS: 11 G:13 SSW	WS: 12 G:14 SSW	WS: 12 G:14 S	WS: 10 G:14 SSE	WS: 8 G:11 ENE	WS: 8 G:9 SE	WS: 9 G:10 SE	WS: 8 G:9 SE	WS: 7 G:8 ESE	WS: 7 G:9 ESE	WS: 6 G:8 ESE	WS: 5 G:7 ESE	WS: 5 G:8 ESE	WS: 4 G:7 ESE	WS: 5 G:8 E	WS: 5 G:7 ENE	WS: 5 G:7 ENE	WS: 6 G:6 NNE	WS: 6 G:6 NNE	WS: 7 G:7 NNE	WS: 7 G:8 NNE	WS: 7 G:8 NNE	WS: 7 G:8 NNE	WS: 7 G:8 NNE	WS: 6 G:7 NE	WS: 6 G:7 NE	
Houston Pilots B - 11/12	WS: 7 G:8 E	WS: 9 G:10 NNE	WS: 9 G:11 E	WS: 9 G:11 SE	WS: 12 G:14 N	WS: 11 G:12 N	WS: 10 G:12 N	WS: 11 G:13 S	WS: 10 G:13 W	WS: 10 G:13 SSE	WS: 9 G:13 ESE	WS: 9 G:12 ESE	WS: 9 G:9 SSE	WS: 8 G:10 SSE	WS: 8 G:9 SSE	WS: 7 G:8 ESE	WS: 7 G:9 ESE	WS: 6 G:8 ESE	WS: 5 G:7 ESE	WS: 6 G:8 ESE	WS: 5 G:7 E	WS: 6 G:7 E	WS: 6 G:6 NNE	WS: 6 G:6 NNE	WS: 7 G:7 NNE	WS: 7 G:8 NNE	WS: 7 G:8 NNE	WS: 7 G:8 NNE	WS: 7 G:8 NNE	WS: 7 G:8 NNE	WS: 7 G:7 NE	WS: 6 G:7 NE	
Houston Pilots A - 1 & 2 Bravo	WS: 8 G:8 ENE	WS: 10 G:10 NNE	WS: 11 G:12 SW	WS: 12 G:12 N	WS: 16 G:16 N	WS: 13 G:13 N	WS: 12 G:13 N	WS: 10 G:13 N	WS: 9 G:12 S	WS: 11 G:13 NNE	WS: 11 G:12 ESE	WS: 10 G:12 ESE	WS: 9 G:10 SSE	WS: 8 G:10 SSE	WS: 8 G:8 SSE	WS: 8 G:10 ESE	WS: 8 G:9 E	WS: 8 G:9 E	WS: 8 G:9 E	WS: 8 G:9 ESE	WS: 7 G:8 ESE	WS: 7 G:9 E	WS: 7 G:8 E	WS: 7 G:8 ENE	WS: 7 G:7 NNE	WS: 7 G:7 NNE	WS: 7 G:7 NNE	WS: 7 G:7 NNE	WS: 7 G:7 NNE	WS: 7 G:7 NNE	WS: 7 G:7 NNE	WS: 6 G:7 NE	WS: 6 G:7 NE

See slides below for official thoughts on winds.

Houston Pilots: *Fri. 6/3/2022*

Forecast Discussion

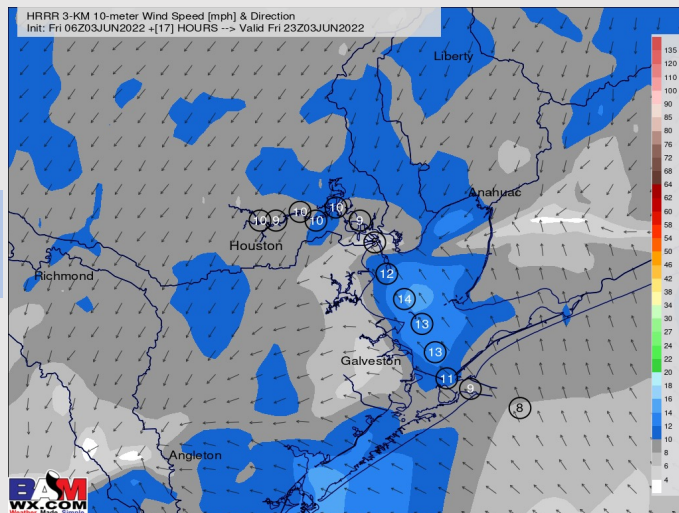
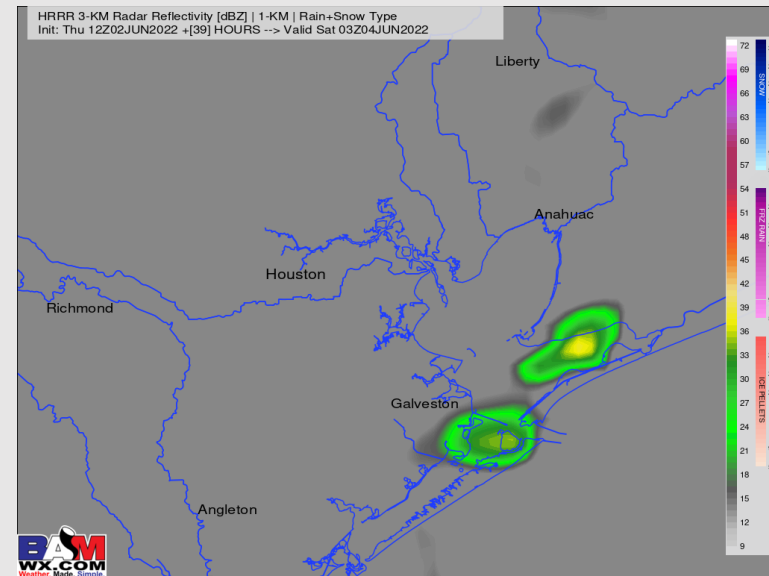
Precip: This afternoon and evening (3 PM and beyond) holds a ~20% chance of a few isolated showers and thunderstorms. The afternoon chances come from any cells that can form off the sea breeze, while a piece of energy coming from the NW may allow a few pockets of showers/t-storms to move in later this evening (best threat stays NW of the stations.) Plenty of dry time today but wanted to highlight a few risks to watch.

Wind: Winds look to be 5-10 MPH sustained throughout most of the morning with an occasional gust to 15 MPH (coming from the NNE). Winds by ~4/5 PM turn to come out of the SE at 8-13 MPH sustained. Any localized gusts higher of 20-30 MPH would be confined to any thunderstorms.

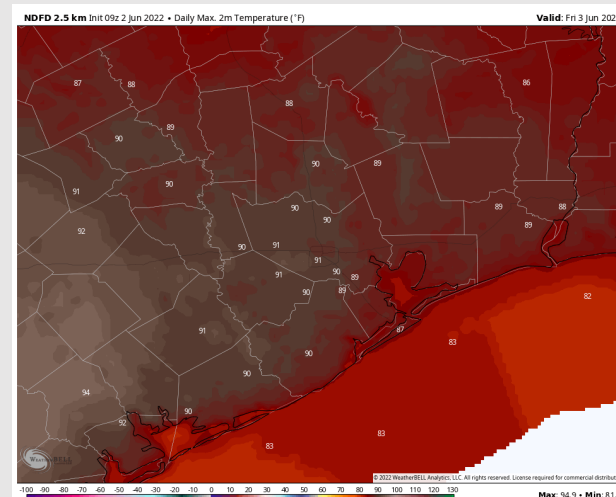
Temps: Highs once again reach the upper 80s F for the stations, warmer further inland.

Visibility: Not anticipating fog issues today.

Precip Forecast: 9 PM CT



Wind Speed
7 PM CT



High Temps

Houston Pilots: Sat. 6/4/2022

Forecast Discussion

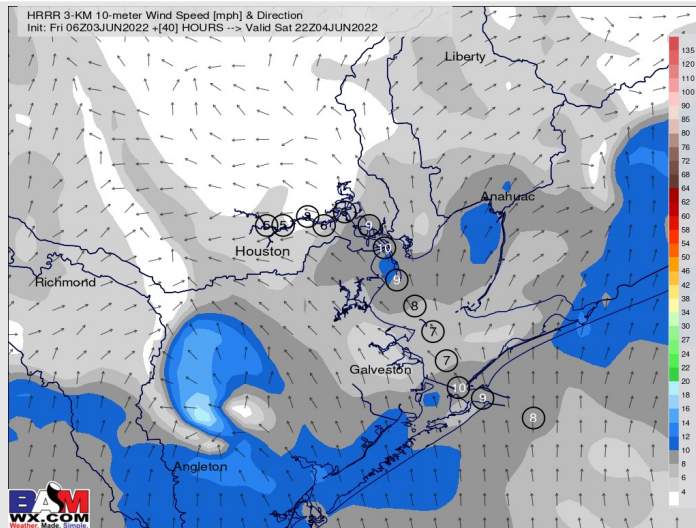
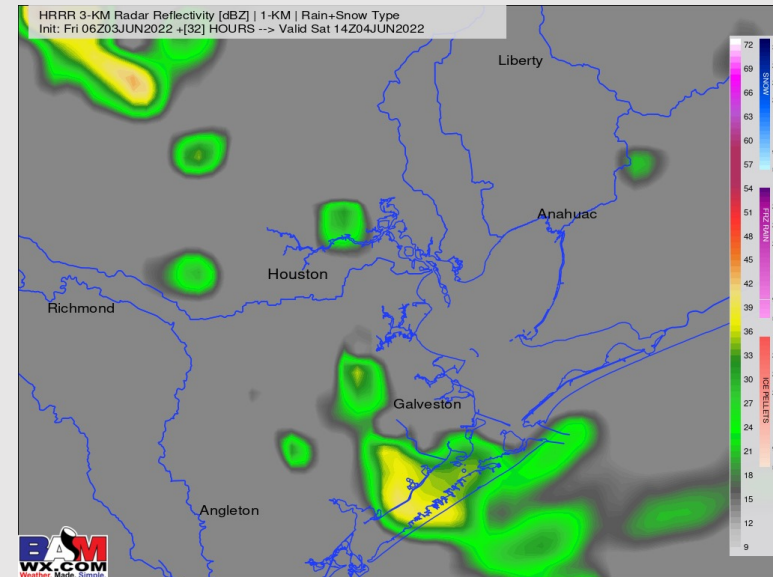
Precip: Another wave of energy moves through late morning/early afternoon that provides a 20-30% chance of a few hit and miss showers/thunderstorms, but similar to Friday there's plenty of dry time to be expected through the day.

Wind: Slightly lower confidence, but currently favoring winds to start out of the N at 3-8 MPH with winds then turning out of the SE at 5-10 MPH sustained for the afternoon hours (some gusts to 15 MPH possible). Under a localized t-storm, gusts 20-30+ MPH are possible.

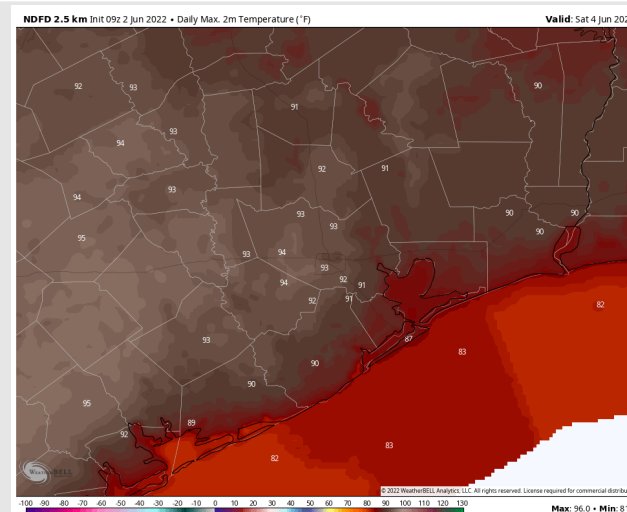
Temps: Persistent high temps expected Saturday topping out in the mid to upper 80s.

Visibility: No fog is expected for our stations on Saturday.

Precip Forecast: 11 AM CT



Wind Speed
4 PM CT



High Temps
Saturday

Houston Pilots: *Sun. 6/5/2022*

Forecast Discussion

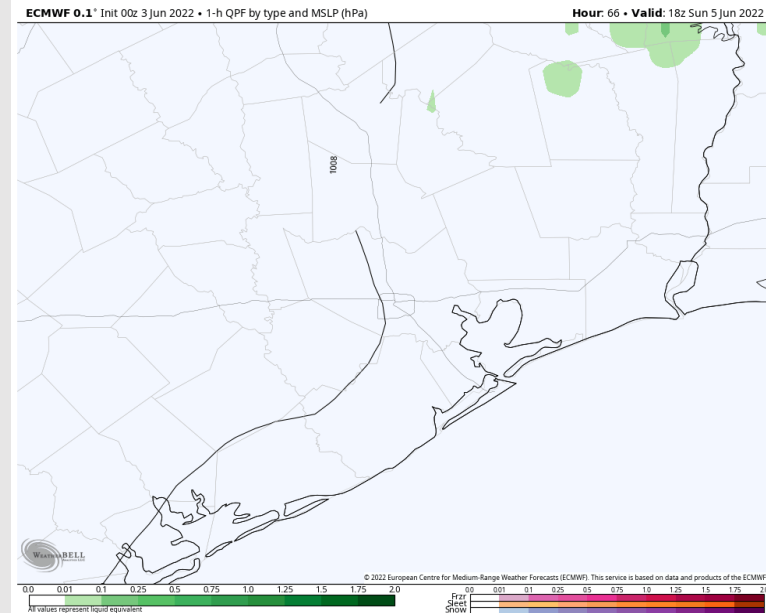
Precip: Favoring Sunday to be a dry day.

Wind: Sunday likely features a SW wind at 8-13 MPH sustained with gusts to 15 MPH possible.

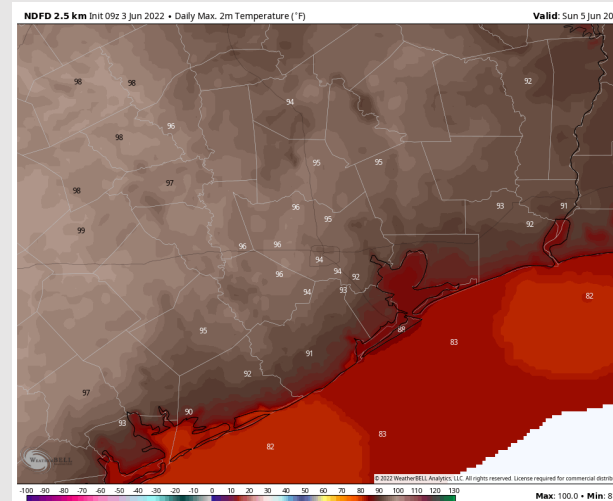
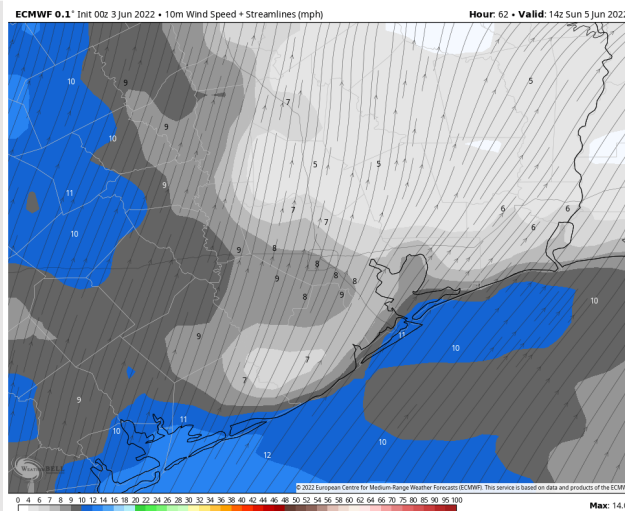
Temps: Highs for most stations will be in the mid to upper 80s.

Visibility: Not anticipating fog Sunday.

Precip Forecast: 7 PM CT

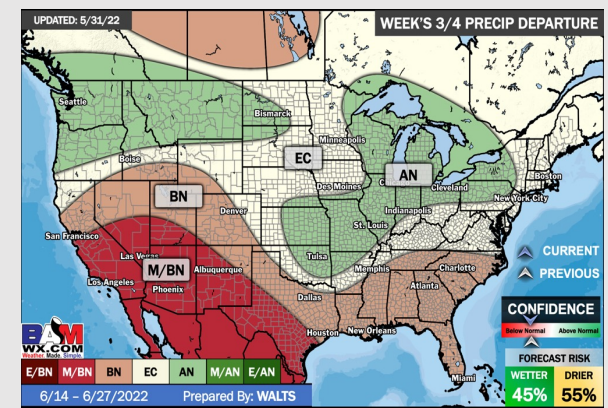
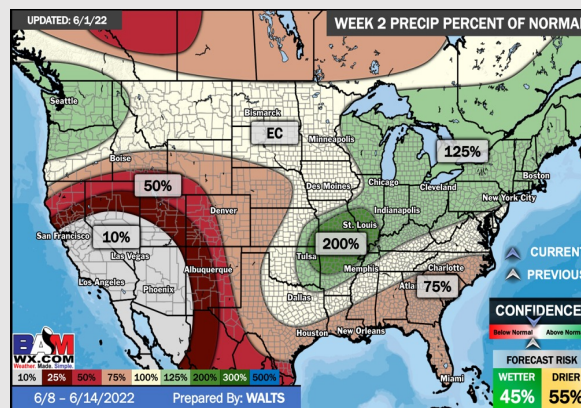
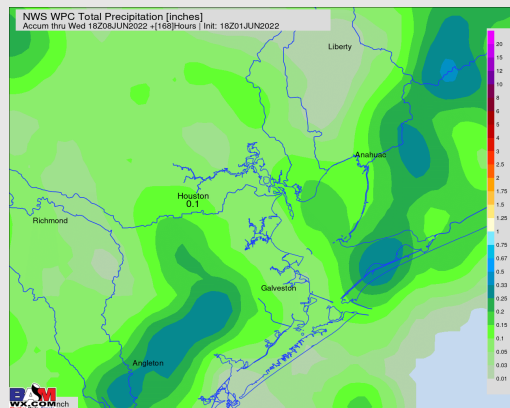
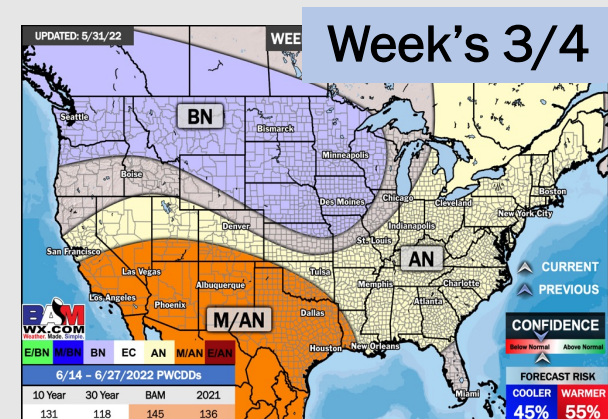
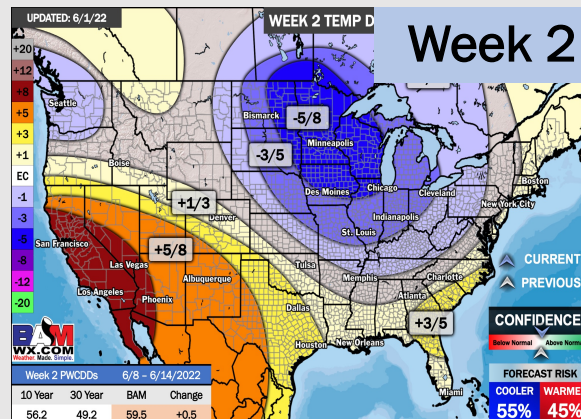
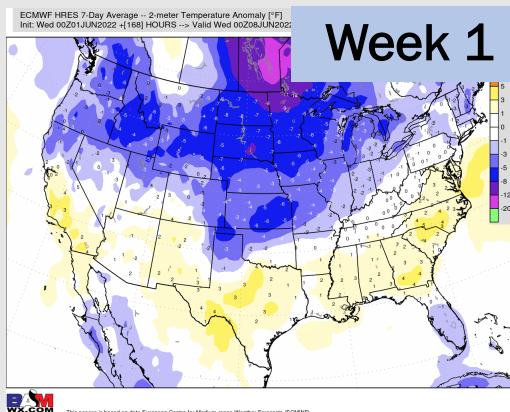


Wind Speed:
5 PM CT



High Temps
Sunday

Houston Pilots: 6/3/22



- Isolated to scattered precip chances Thu into Friday with a boundary moving through, however, totals are not impressive for this week. Temps are favored to end up near average.
- Week 2 likely features above normal risks for temperatures, and below normal precipitation risks.
- The weeks ¾ timeframe looks to features above normal temperatures and below normal risks for precip.