

Houston Pilots Forecast Package

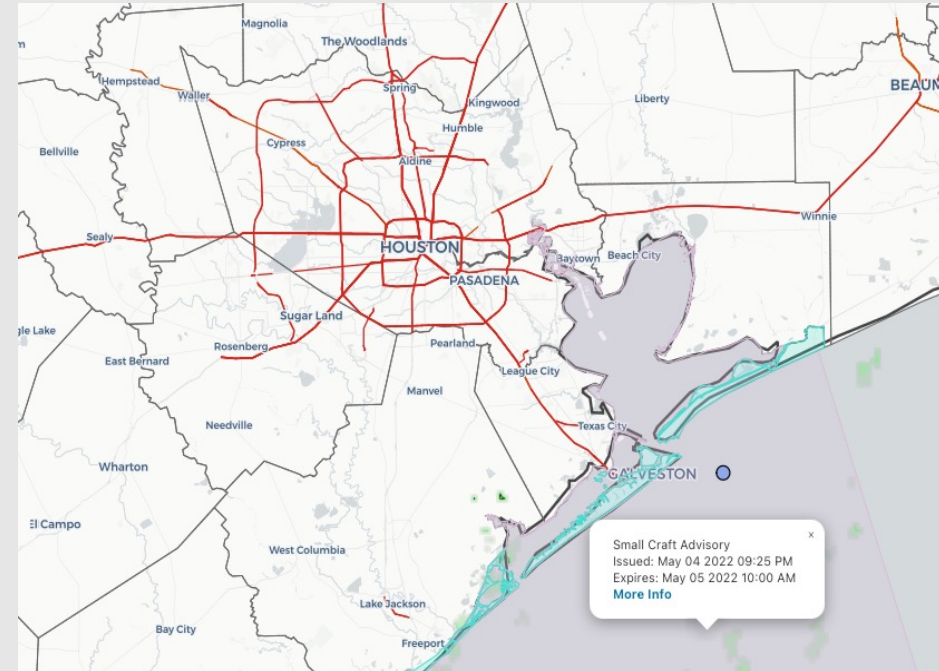


Update: 5:00 AM CT
Thursday, May 5, 2022

Forecaster: Vince Bryan

Weather Headlines

- The signal for fog continues to look weak for the next several days.
- Outside of a line of potentially stronger showers/thunderstorms this evening, the pattern is rather dry over the next week.
- Aside from a brief turn to the NW late tonight, southerly flow (sometimes varying to SW/SE) will be likely over the next week



Radar/NWS Alerts: 5:00 AM CT



As always, please do not hesitate to reach out to us with any forecast questions via the chat option on the Weather Porthole or our on-call number, **(317)-560-8122** press 1 for forecast questions.

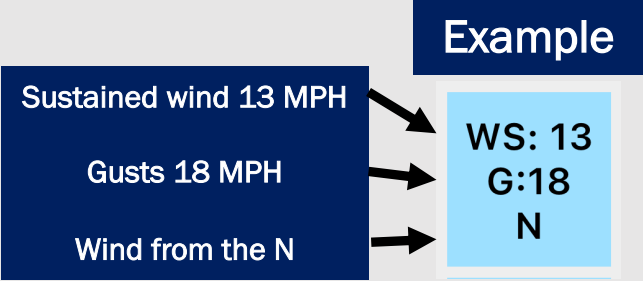
Houston Pilots Visibility Report



Time	05-06-2022 Thu 3am	05-05-2022 Thu 4am	05-05-2022 Thu 5am	05-05-2022 Thu 6am	05-05-2022 Thu 7am	05-05-2022 Thu 8am	05-05-2022 Thu 9am	05-05-2022 Thu 10am	05-05-2022 Thu 11am	05-05-2022 Thu 12pm	05-05-2022 Thu 1pm	05-05-2022 Thu 2pm	05-05-2022 Thu 3pm	05-05-2022 Thu 4pm	05-05-2022 Thu 5pm	05-05-2022 Thu 6pm	05-05-2022 Thu 7pm	05-05-2022 Thu 8pm	05-05-2022 Thu 9pm	05-05-2022 Thu 10pm	05-05-2022 Thu 11pm	05-06-2022 Fri 12am	05-06-2022 Fri 1am	05-06-2022 Fri 2am	05-06-2022 Fri 3am	05-06-2022 Fri 4am	05-06-2022 Fri 5am	05-06-2022 Fri 6am	05-06-2022 Fri 7am	05-06-2022 Fri 8am	05-06-2022 Fri 9am	05-06-2022 Fri 10am	05-06-2022 Fri 11am	05-06-2022 Fri 12pm	05-06-2022 Fri 1pm	05-06-2022 Fri 2pm	
Houston Pilots N - 610 Bridge	10.000	10.000	10.000	10.000	7.924	6.935	10.000	10.000	10.000	10.000	10.000	10.000	10.000	10.000	10.000	10.000	10.000	9.033	9.033	9.033	7.919	7.919	9.033	8.988	10.000	10.000	10.000	8.988	6.964	6.964	10.000	10.000	10.000	10.000	10.000	10.000	10.000
Houston Pilots M - Kinder 1	10.000	10.000	10.000	10.000	7.924	6.935	10.000	10.000	10.000	10.000	10.000	10.000	10.000	10.000	10.000	10.000	10.000	9.033	9.033	8.718	7.919	7.940	9.033	8.988	10.000	10.000	10.000	8.988	7.212	7.198	10.000	10.000	10.000	10.000	10.000	10.000	10.000
Houston Pilots L - Greens Bayou	10.000	10.000	10.000	10.000	7.924	6.923	10.000	10.000	10.000	10.000	10.000	10.000	10.000	10.000	10.000	10.000	8.146	9.033	8.573	7.919	7.966	9.033	8.988	10.000	10.000	10.000	8.988	7.573	7.573	10.000	10.000	10.000	10.000	10.000	10.000	10.000	10.000
Houston Pilots K - Shell Crude	10.000	10.000	10.000	10.000	7.924	6.919	10.000	10.000	10.000	10.000	10.000	10.000	10.000	10.000	10.000	10.000	9.033	9.033	9.033	7.999	7.999	9.033	8.988	10.000	10.000	10.000	8.988	8.033	8.033	10.000	10.000	10.000	10.000	10.000	10.000	10.000	10.000
Houston Pilots J - Lynchburg Ferries	10.000	10.000	10.000	10.000	7.924	6.929	10.000	10.000	10.000	10.000	10.000	10.000	10.000	10.000	10.000	10.000	9.033	9.033	9.033	7.999	7.999	9.033	8.988	10.000	10.000	10.000	8.988	8.033	8.033	10.000	10.000	10.000	10.000	10.000	10.000	10.000	10.000
Houston Pilots I - Exxon 3	10.000	10.000	10.000	10.000	7.924	6.929	10.000	10.000	10.000	10.000	10.000	10.000	10.000	10.000	10.000	9.033	9.033	9.033	9.033	7.999	7.999	9.033	8.988	10.000	10.000	10.000	8.988	8.033	8.988	10.000	10.000	10.000	10.000	10.000	10.000	10.000	10.000
Houston Pilots H - Morgans Point	10.000	10.000	10.000	10.000	7.924	6.929	10.000	10.000	10.000	10.000	10.000	10.000	10.000	10.000	10.000	10.000	9.033	9.033	9.033	7.999	7.999	9.033	8.988	10.000	10.000	10.000	10.000	8.033	8.988	10.000	10.000	10.000	10.000	10.000	10.000	10.000	10.000
Houston Pilots G - 75/76	10.000	10.000	10.000	10.000	7.924	6.929	10.000	10.000	10.000	10.000	10.000	10.000	10.000	10.000	10.000	10.000	9.033	9.033	9.033	7.999	7.999	9.033	9.590	10.000	10.000	10.000	10.000	8.033	8.988	10.000	10.000	10.000	10.000	10.000	10.000	10.000	10.000
Houston Pilots F - 63/64	10.000	10.000	10.000	10.000	8.573	6.929	10.000	10.000	10.000	10.000	10.000	10.000	10.000	10.000	10.000	10.000	9.033	9.033	9.033	7.999	8.568	9.635	10.000	10.000	10.000	10.000	10.000	8.556	8.988	10.000	10.000	10.000	10.000	10.000	10.000	10.000	10.000
Houston Pilots E - 51/52	10.000	10.000	10.000	10.000	9.038	6.890	10.000	10.000	10.000	10.000	10.000	10.000	10.000	10.000	10.000	9.801	10.000	9.033	9.033	9.033	7.999	9.033	10.000	10.000	10.000	10.000	10.000	8.988	8.988	8.988	10.000	10.000	10.000	10.000	10.000	10.000	10.000
Houston Pilots D - 37/38	10.000	10.000	10.000	10.000	9.038	6.890	10.000	10.000	10.000	10.000	10.000	10.000	10.000	10.000	10.000	8.999	9.033	9.033	9.033	9.033	7.999	9.033	10.000	10.000	10.000	10.000	10.000	8.988	8.988	8.988	10.000	10.000	10.000	10.000	10.000	10.000	10.000
Houston Pilots C - 25/26	10.000	10.000	10.000	10.000	9.038	6.938	9.446	10.000	10.000	10.000	10.000	10.000	10.000	10.000	10.000	7.804	10.000	9.033	9.033	9.033	7.999	9.033	10.000	10.000	10.000	10.000	10.000	8.988	8.988	8.988	10.000	10.000	10.000	10.000	10.000	10.000	10.000
Houston Pilots B - 11/12	10.000	10.000	10.000	10.000	9.038	6.938	9.038	10.000	10.000	10.000	10.000	10.000	10.000	10.000	9.046	6.931	9.033	9.033	9.033	8.110	7.999	9.033	10.000	10.000	10.000	10.000	10.000	8.988	8.988	8.988	9.035	8.988	10.000	10.000	10.000	10.000	
Houston Pilots A - 1 & 2 Bravo	10.000	10.000	8.701	8.327	6.890	6.890	9.038	10.000	10.000	10.000	10.000	10.000	8.384	7.361	6.931	5.897	9.033	9.033	7.999	7.999	7.999	7.999	8.774	8.033	7.731	7.990	7.544	7.455	8.033	8.988	8.988	8.988	8.650	9.033	9.033	9.033	

Not anticipating fog tonight or Wednesday.

Houston Pilots Wind Report



Time	05-05-2022 Thu 3am	05-05-2022 Thu 4am	05-05-2022 Thu 5am	05-05-2022 Thu 6am	05-05-2022 Thu 7am	05-05-2022 Thu 8am	05-05-2022 Thu 9am	05-05-2022 Thu 10am	05-05-2022 Thu 11am	05-05-2022 Thu 12pm	05-05-2022 Thu 1pm	05-05-2022 Thu 2pm	05-05-2022 Thu 3pm	05-05-2022 Thu 4pm	05-05-2022 Thu 5pm	05-05-2022 Thu 6pm	05-05-2022 Thu 7pm	05-05-2022 Thu 8pm	05-05-2022 Thu 9pm	05-05-2022 Thu 10pm	05-05-2022 Thu 11pm	05-06-2022 Fri 12am	05-06-2022 Fri 1am	05-06-2022 Fri 2am	05-06-2022 Fri 3am	05-06-2022 Fri 4am	05-06-2022 Fri 5am	05-06-2022 Fri 6am	05-06-2022 Fri 7am	05-06-2022 Fri 8am	05-06-2022 Fri 9am	05-06-2022 Fri 10am	05-06-2022 Fri 11am	05-06-2022 Fri 12pm	05-06-2022 Fri 1pm	05-06-2022 Fri 2pm
Houston Pilots N - 610 Bridge	WS: 6 G:14 SE	WS: 6 G:17 SE	WS: 10 G:25 SSE	WS: 15 G:33 SSE	WS: 12 G:31 SSE	WS: 12 G:29 S	WS: 12 G:26 S	WS: 14 G:26 S	WS: 17 G:27 S	WS: 16 G:27 S	WS: 19 G:30 S	WS: 18 G:27 S	WS: 15 G:22 S	WS: 14 G:21 S	WS: 12 G:18 S	WS: 12 G:19 S	WS: 10 G:18 S	WS: 9 G:16 ESE	WS: 8 G:14 ESE	WS: 6 G:11 SE	WS: 5 G:9 SSE	WS: 4 G:8 S	WS: 5 G:9 SW	WS: 5 G:9 WSW	WS: 4 G:8 S	WS: 4 G:8 SSW	WS: 3 G:6 SW	WS: 3 G:5 SW	WS: 3 G:4 SW	WS: 3 G:5 SW	WS: 4 G:6 SSW	WS: 4 G:8 SW	WS: 5 G:8 SW	WS: 4 G:9 WSW	WS: 4 G:9 WSW	
Houston Pilots M - Kinder 1	WS: 6 G:14 SE	WS: 7 G:18 SE	WS: 10 G:25 SSE	WS: 15 G:33 SSE	WS: 12 G:31 SSE	WS: 12 G:29 S	WS: 12 G:26 S	WS: 13 G:25 S	WS: 17 G:27 S	WS: 17 G:28 S	WS: 19 G:30 S	WS: 18 G:27 S	WS: 15 G:23 S	WS: 14 G:20 S	WS: 12 G:18 S	WS: 12 G:19 S	WS: 10 G:17 S	WS: 9 G:15 ESE	WS: 8 G:14 ESE	WS: 6 G:11 SE	WS: 5 G:9 SSE	WS: 4 G:8 S	WS: 5 G:9 SW	WS: 5 G:9 WSW	WS: 4 G:8 S	WS: 4 G:8 SSW	WS: 3 G:6 SW	WS: 3 G:5 SW	WS: 3 G:4 SW	WS: 3 G:5 SW	WS: 3 G:6 SSW	WS: 4 G:8 SW	WS: 5 G:8 SW	WS: 4 G:9 WSW	WS: 4 G:9 WSW	
Houston Pilots L - Greens Bayou	WS: 6 G:15 SSE	WS: 7 G:18 SE	WS: 10 G:25 SSE	WS: 15 G:33 SSE	WS: 12 G:32 SSE	WS: 12 G:30 S	WS: 12 G:26 S	WS: 13 G:25 S	WS: 17 G:27 S	WS: 18 G:28 S	WS: 19 G:30 S	WS: 18 G:28 S	WS: 16 G:23 S	WS: 14 G:20 S	WS: 12 G:17 S	WS: 12 G:18 S	WS: 10 G:17 S	WS: 9 G:15 ESE	WS: 8 G:13 ESE	WS: 6 G:10 SE	WS: 5 G:9 SSE	WS: 5 G:8 SSW	WS: 5 G:9 SW	WS: 4 G:8 SSW	WS: 4 G:7 SSW	WS: 3 G:6 SW	WS: 3 G:5 SW	WS: 2 G:4 WSW	WS: 3 G:5 WSW	WS: 4 G:6 SSW	WS: 4 G:8 SW	WS: 4 G:8 SW	WS: 4 G:8 WSW	WS: 4 G:9 WSW	WS: 4 G:9 WSW	
Houston Pilots K - Shell Crude	WS: 6 G:15 SSE	WS: 8 G:19 SE	WS: 11 G:25 SSE	WS: 14 G:32 SSE	WS: 13 G:32 SSE	WS: 12 G:30 S	WS: 13 G:27 S	WS: 13 G:26 S	WS: 17 G:27 S	WS: 18 G:28 S	WS: 19 G:30 S	WS: 19 G:28 S	WS: 16 G:24 S	WS: 14 G:21 S	WS: 12 G:17 S	WS: 12 G:18 S	WS: 11 G:16 S	WS: 9 G:14 ESE	WS: 8 G:14 ESE	WS: 6 G:11 SE	WS: 5 G:10 SSE	WS: 5 G:9 SSW	WS: 5 G:9 SSW	WS: 4 G:8 SSW	WS: 4 G:8 SSW	WS: 3 G:7 SW	WS: 3 G:5 SW	WS: 3 G:4 WSW	WS: 3 G:5 WSW	WS: 4 G:6 SW	WS: 4 G:8 SW	WS: 4 G:8 SW	WS: 5 G:8 WSW	WS: 5 G:8 WSW	WS: 4 G:9 SSW	
Houston Pilots J - Lynchburg Ferries	WS: 6 G:15 SSE	WS: 8 G:20 SSE	WS: 11 G:25 SSE	WS: 14 G:33 SSE	WS: 14 G:32 SSE	WS: 13 G:30 S	WS: 13 G:27 S	WS: 13 G:26 SSE	WS: 17 G:27 S	WS: 18 G:28 S	WS: 19 G:30 S	WS: 19 G:28 S	WS: 16 G:24 S	WS: 15 G:21 S	WS: 12 G:17 S	WS: 13 G:18 S	WS: 11 G:17 SSE	WS: 10 G:15 SE	WS: 9 G:14 ESE	WS: 7 G:11 SE	WS: 6 G:10 SSE	WS: 6 G:9 SSW	WS: 6 G:9 SW	WS: 5 G:8 SW	WS: 5 G:8 SSW	WS: 4 G:7 SW	WS: 4 G:6 SW	WS: 4 G:5 W	WS: 4 G:6 WSW	WS: 4 G:6 WSW	WS: 5 G:8 SW	WS: 5 G:8 SW	WS: 5 G:8 WSW	WS: 5 G:8 WSW	WS: 5 G:8 WSW	
Houston Pilots I - Exxon 3	WS: 7 G:16 SSE	WS: 10 G:21 SSE	WS: 12 G:25 SSE	WS: 16 G:32 SSE	WS: 16 G:32 SSE	WS: 15 G:31 S	WS: 15 G:28 S	WS: 14 G:23 S	WS: 17 G:25 S	WS: 19 G:30 SSE	WS: 20 G:30 SSE	WS: 19 G:28 S	WS: 17 G:24 S	WS: 15 G:21 S	WS: 13 G:18 S	WS: 13 G:18 S	WS: 11 G:16 S	WS: 10 G:15 ESE	WS: 9 G:15 ESE	WS: 7 G:13 SE	WS: 6 G:11 SSE	WS: 6 G:11 SSW	WS: 6 G:10 SSW	WS: 6 G:10 SSW	WS: 6 G:10 SSW	WS: 5 G:9 SSW	WS: 4 G:8 SW	WS: 4 G:7 SW	WS: 4 G:6 WSW	WS: 4 G:6 WSW	WS: 5 G:8 SW	WS: 5 G:8 SW	WS: 5 G:8 WSW	WS: 5 G:9 SSW	WS: 5 G:9 SSW	
Houston Pilots H - Morgans Point	WS: 11 G:17 SSE	WS: 14 G:21 SSE	WS: 14 G:24 SSE	WS: 20 G:31 SSE	WS: 20 G:33 SSE	WS: 20 G:33 SSE	WS: 17 G:29 S	WS: 15 G:22 S	WS: 17 G:24 S	WS: 20 G:30 SSE	WS: 22 G:31 SSE	WS: 20 G:28 S	WS: 18 G:24 S	WS: 16 G:22 S	WS: 14 G:19 S	WS: 13 G:18 S	WS: 11 G:16 S	WS: 10 G:15 SE	WS: 8 G:15 ESE	WS: 7 G:13 ESE	WS: 6 G:11 SSE	WS: 6 G:11 SSW	WS: 6 G:10 SSW	WS: 6 G:10 SSW	WS: 7 G:12 SSW	WS: 7 G:11 SSW	WS: 6 G:10 W	WS: 5 G:9 SW	WS: 5 G:8 SW	WS: 4 G:8 WSW	WS: 5 G:8 SW	WS: 5 G:9 SSW	WS: 5 G:9 SSW	WS: 5 G:9 SSW	WS: 6 G:9 SSE	
Houston Pilots G - 75/76	WS: 15 G:17 S	WS: 18 G:21 SSE	WS: 18 G:23 SSE	WS: 25 G:32 SSE	WS: 26 G:35 SSE	WS: 25 G:34 SSE	WS: 20 G:29 S	WS: 18 G:23 S	WS: 20 G:25 S	WS: 23 G:29 SSE	WS: 25 G:31 SSE	WS: 23 G:28 S	WS: 19 G:25 S	WS: 17 G:23 S	WS: 13 G:18 S	WS: 13 G:16 S	WS: 11 G:16 SSE	WS: 11 G:17 ESE	WS: 10 G:16 ESE	WS: 9 G:17 E	WS: 9 G:16 SSE	WS: 9 G:15 SSW	WS: 9 G:14 SSW	WS: 8 G:14 SW	WS: 8 G:13 SW	WS: 7 G:12 SW	WS: 7 G:11 SW	WS: 6 G:10 SW	WS: 6 G:9 SSW	WS: 5 G:9 SSW	WS: 5 G:10 SSW	WS: 5 G:10 SSW	WS: 5 G:9 SSW	WS: 5 G:9 SSW	WS: 6 G:10 SSE	
Houston Pilots F - 63/64	WS: 14 G:15 S	WS: 18 G:20 SSE	WS: 18 G:23 SSE	WS: 25 G:31 SSE	WS: 26 G:34 SSE	WS: 25 G:35 SSE	WS: 20 G:28 S	WS: 19 G:25 S	WS: 21 G:25 S	WS: 22 G:27 S	WS: 25 G:30 S	WS: 23 G:28 S	WS: 18 G:24 S	WS: 15 G:21 S	WS: 13 G:18 S	WS: 12 G:16 S	WS: 12 G:16 SSE	WS: 12 G:18 E	WS: 11 G:18 ENE	WS: 10 G:17 S	WS: 10 G:16 S	WS: 10 G:15 SSW	WS: 10 G:14 SSW	WS: 9 G:14 SSW	WS: 9 G:14 SSW	WS: 8 G:13 WSW	WS: 7 G:12 SW	WS: 7 G:11 SW	WS: 6 G:10 SW	WS: 6 G:10 SW	WS: 6 G:10 SW	WS: 6 G:11 SW	WS: 6 G:11 SW	WS: 6 G:11 SW	WS: 6 G:11 SSW	WS: 6 G:11 SSW
Houston Pilots E - 51/52	WS: 14 G:15 SSE	WS: 17 G:19 SSE	WS: 18 G:23 SSE	WS: 24 G:30 SSE	WS: 26 G:33 SSE	WS: 26 G:35 SSE	WS: 21 G:29 S	WS: 20 G:26 S	WS: 20 G:24 S	WS: 23 G:28 S	WS: 22 G:26 S	WS: 20 G:26 S	WS: 18 G:25 S	WS: 16 G:21 S	WS: 13 G:18 S	WS: 12 G:15 S	WS: 12 G:17 SSE	WS: 12 G:18 ENE	WS: 11 G:19 ENE	WS: 10 G:18 S	WS: 10 G:17 S	WS: 10 G:15 SSW	WS: 10 G:15 SSW	WS: 10 G:14 SSW	WS: 10 G:14 SSW	WS: 9 G:13 SW	WS: 8 G:12 SW	WS: 7 G:11 SSW	WS: 7 G:11 SSW	WS: 6 G:11 SW	WS: 6 G:11 SW	WS: 6 G:11 SW	WS: 6 G:11 SSW	WS: 6 G:10 SSW	WS: 7 G:12 SSW	
Houston Pilots D - 37/38	WS: 14 G:15 SSE	WS: 15 G:18 SSE	WS: 16 G:23 SSE	WS: 22 G:28 SSE	WS: 23 G:32 SSE	WS: 25 G:35 SSE	WS: 21 G:29 S	WS: 21 G:28 S	WS: 18 G:24 SSE	WS: 18 G:25 SSE	WS: 21 G:27 S	WS: 20 G:26 S	WS: 17 G:24 S	WS: 15 G:21 S	WS: 13 G:17 S	WS: 11 G:15 SSE	WS: 12 G:17 SSE	WS: 12 G:18 E	WS: 12 G:19 ENE	WS: 11 G:18 ENE	WS: 10 G:17 S	WS: 10 G:17 S	WS: 10 G:15 SSW	WS: 10 G:14 SSW	WS: 10 G:14 SSW	WS: 9 G:13 SW	WS: 9 G:13 SW	WS: 8 G:12 SW	WS: 8 G:11 SSW	WS: 7 G:11 SSW	WS: 7 G:12 SSW	WS: 7 G:12 SSW	WS: 7 G:12 SSW	WS: 7 G:12 SSW	WS: 8 G:13 S	
Houston Pilots C - 25/26	WS: 13 G:16 SSE	WS: 12 G:18 SSE	WS: 15 G:23 SSE	WS: 19 G:27 SSE	WS: 23 G:30 SSE	WS: 23 G:34 SSE	WS: 19 G:29 S	WS: 19 G:28 S	WS: 16 G:24 SSE	WS: 16 G:25 SSE	WS: 19 G:27 S	WS: 18 G:26 S	WS: 16 G:23 S	WS: 14 G:20 S	WS: 12 G:17 S	WS: 11 G:14 SSE	WS: 10 G:16 SSE	WS: 12 G:17 ESE	WS: 12 G:18 ENE	WS: 11 G:17 ENE	WS: 10 G:16 SSE	WS: 11 G:17 S	WS: 10 G:15 SSW	WS: 10 G:14 SSW	WS: 10 G:14 SSW	WS: 9 G:13 SW	WS: 9 G:13 SW	WS: 8 G:12 SW	WS: 8 G:12 SSW	WS: 7 G:12 SSW	WS: 7 G:12 SSW	WS: 7 G:13 SSW	WS: 8 G:13 SSW	WS: 8 G:13 SSW	WS: 8 G:14 SSW	
Houston Pilots B - 11/12	WS: 13 G:16 SSE	WS: 12 G:17 SSE	WS: 16 G:23 SSE	WS: 19 G:27 SSE	WS: 22 G:31 SSE	WS: 24 G:34 SSE	WS: 21 G:31 SSE	WS: 19 G:28 S	WS: 16 G:23 SSE	WS: 16 G:24 SSE	WS: 17 G:25 S	WS: 19 G:27 S	WS: 17 G:26 S	WS: 15 G:23 S	WS: 12 G:20 S	WS: 12 G:17 SSE	WS: 11 G:14 SSE	WS: 11 G:16 SSE	WS: 12 G:17 ESE	WS: 12 G:19 E	WS: 12 G:17 SSE	WS: 12 G:17 SSE	WS: 11 G:15 S	WS: 10 G:15 S	WS: 10 G:14 SSW	WS: 10 G:14 SSW	WS: 9 G:13 SW	WS: 8 G:12 SSW	WS: 8 G:12 SSW	WS: 7 G:12 SSW	WS: 7 G:13 SSW	WS: 8 G:14 SSW	WS: 8 G:14 SSW	WS: 8 G:13 SSW	WS: 9 G:15 SSW	
Houston Pilots A - 1 & 2 Bravo	WS: 13 G:15 SSE	WS: 13 G:17 SSE	WS: 16 G:21 SE	WS: 21 G:26 SSE	WS: 24 G:30 SSE	WS: 24 G:33 SSE	WS: 25 G:33 SSE	WS: 21 G:29 S	WS: 18 G:25 S	WS: 18 G:26 SSE	WS: 20 G:28 S	WS: 20 G:29 SSE	WS: 18 G:27 S	WS: 15 G:23 S	WS: 12 G:20 S	WS: 12 G:16 S	WS: 11 G:14 SSE	WS: 11 G:16 SSE	WS: 13 G:17 ESE	WS: 13 G:19 E	WS: 13 G:18 SSE	WS: 13 G:18 SSE	WS: 13 G:17 S	WS: 12 G:17 S	WS: 12 G:16 S	WS: 12 G:15 SSW	WS: 11 G:14 SW	WS: 10 G:13 SSW	WS: 9 G:13 SSW	WS: 9 G:14 SSW	WS: 9 G:14 SSW	WS: 9 G:15 SSW	WS: 9 G:15 SSW	WS: 9 G:15 SSW	WS: 9 G:15 SSW	WS: 9 G:15 SSW

See slides below for official thoughts on winds.

Houston Pilots Extended Range Visibility Report



Sunday, 5/8/22

Currently not anticipating fog on Sunday.

Confidence

Above
Normal

Below
Normal

Tuesday 5/10/22

No fog is expected Tuesday.

Confidence

Above
Normal

Below
Normal

Monday, 5/9/22

No fog is favored for Monday.

Confidence

Above
Normal

Below
Normal

Daily Fog Chance

Sunday AM

Unlikely

Monday AM

Unlikely

Tuesday AM

Unlikely

Houston Pilots: Thu. 5/5/2022

Forecast Discussion

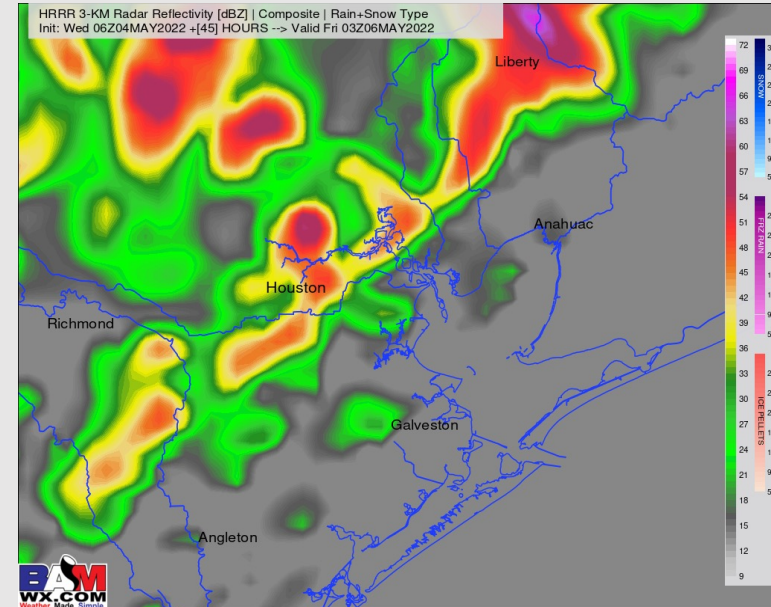
Precip: While an isolated, very light shower is possible from daybreak out through 2-4 PM (~20%), the better threat for increasing showers and thunderstorms comes after sundown Thursday. The best threat for stronger thunderstorms comes 8PM – 12 AM (wind being the biggest risk and gusts 30-40+ MPH possible under the heaviest of cells). The line will be moving in from the NW

Wind: Winds out of the SSE increase to 20-25 MPH by 7-8 AM with gusts to 25-30 MPH possible. By 1-2PM winds calm to 13-18 MPH for the afternoon. Evening winds will be dependent on how storms play out, but right after the front passes, winds briefly turn out of the NW.

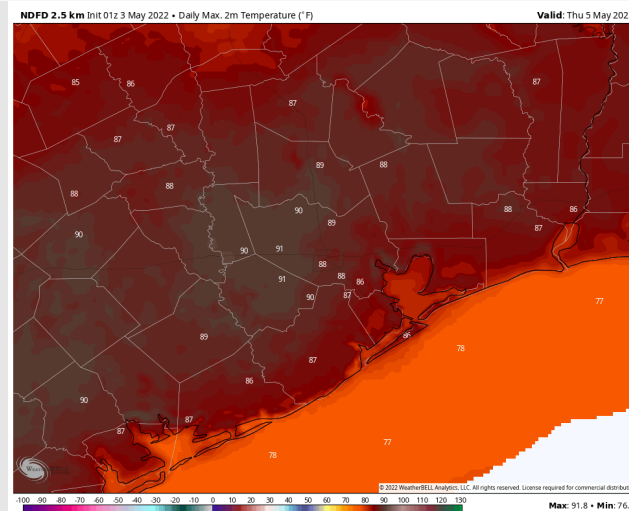
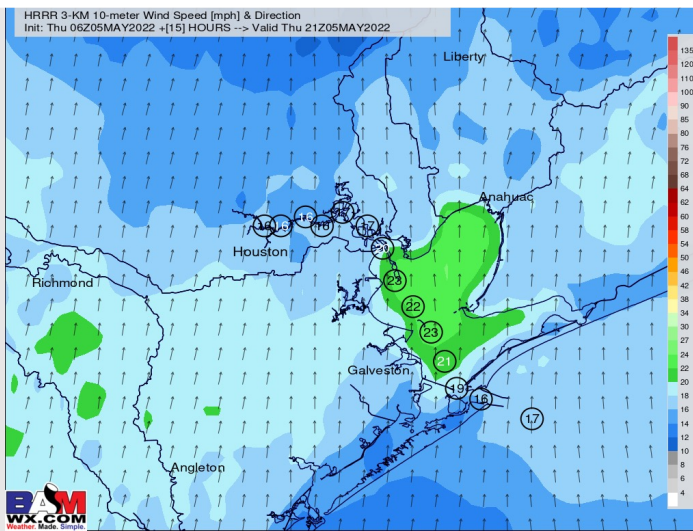
Temps: Highs reach the mid 80s F for the stations, upper 80s towards Hou metro area.

Visibility: Not fog is in the forecast today.

Precip Forecast: 8 PM CT



Wind Speed:
4 PM CT



High Temps

Houston Pilots: *Fri. 5/6/2022*

Forecast Discussion

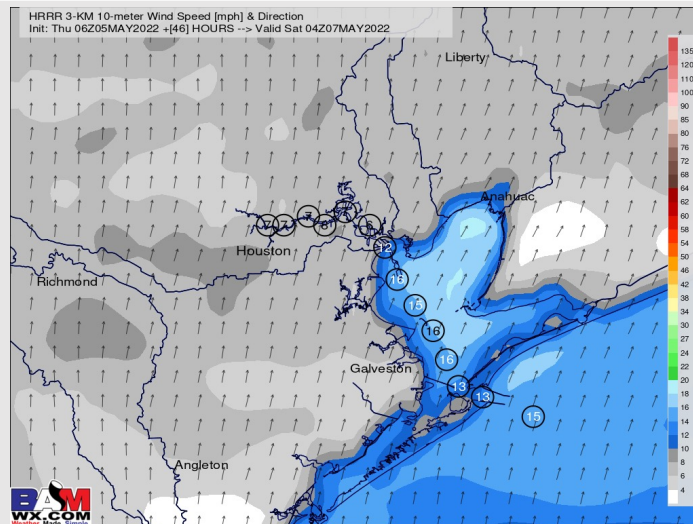
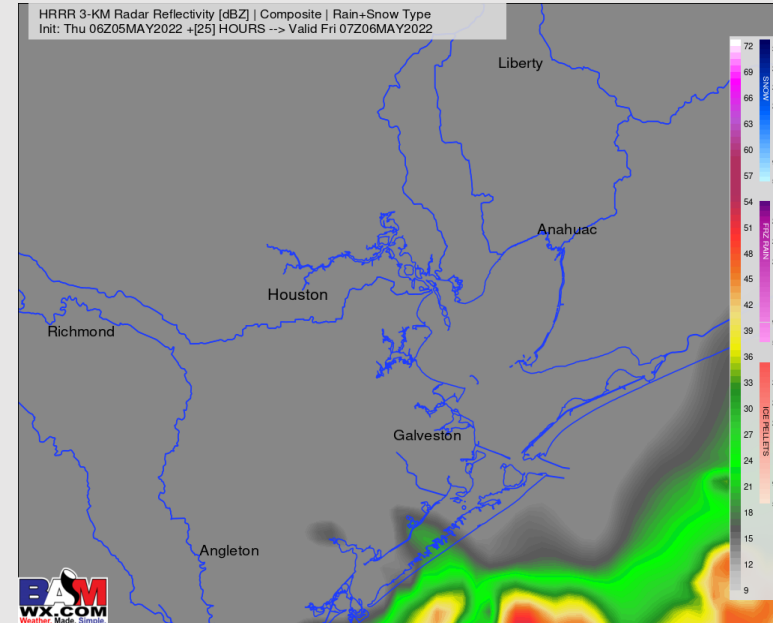
Precip: A few isolated light showers likely linger into Friday AM through the pre-dawn timeframe, but the deeper into the morning we work, the drier things will be. Anticipating dry conditions for the rest of the day.

Wind: Sustained winds will start out of the NW for a few hours before daybreak, but near sunrise and through the early afternoon, winds are out of the SW at 8-13 MPH sustained (gusts to 15 MPH). Winds after 4-5 PM are 13 - 18 MPH out of the SSW for the rest of the day.

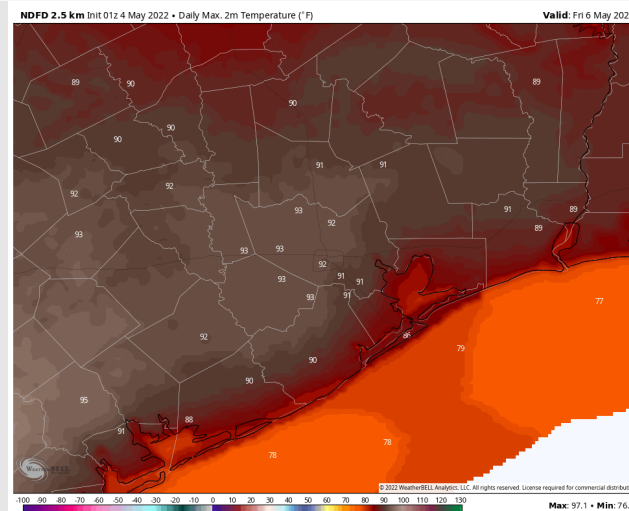
Temps: Highs reach the mid to upper 80s F for our stations, low 90s F towards Hou metro.

Visibility: Currently not anticipating fog on Friday.

Precip Forecast: 4 AM CT



Wind Speed:
7 PM CT



High Temps
Friday

Houston Pilots: Sat. 5/7/2022

Forecast Discussion

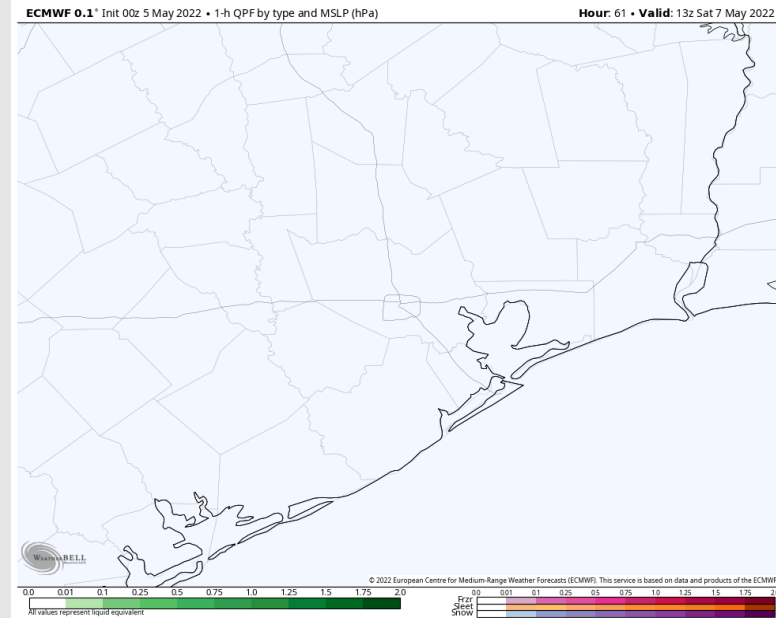
Precip: Saturday will be a dry day.

Wind: Winds much of Saturday will be out of the SW at 8-13 MPH with gusts 13-18 MPH.

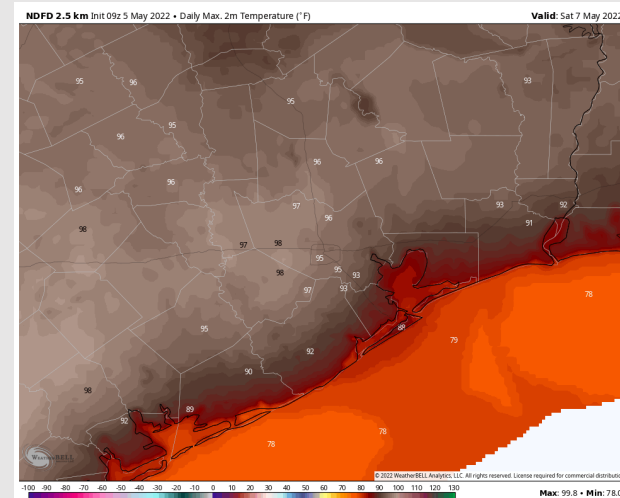
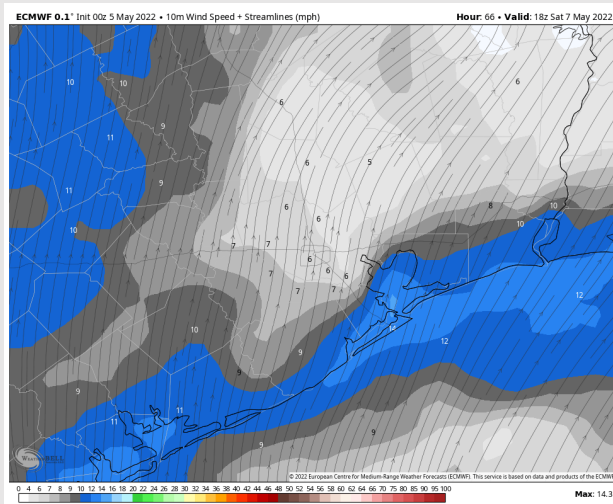
Temps: Highs will reach into the upper 80s / lower 90s around the area (warmer inland).

Visibility: Currently not anticipating fog.

Precip Forecast: 8 AM CT

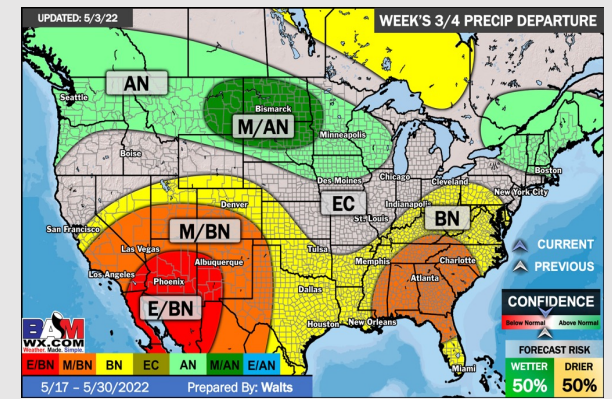
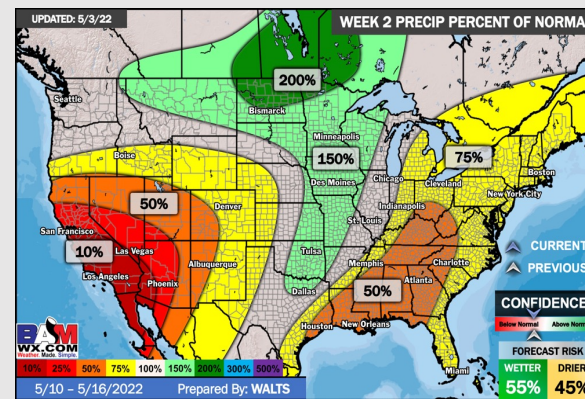
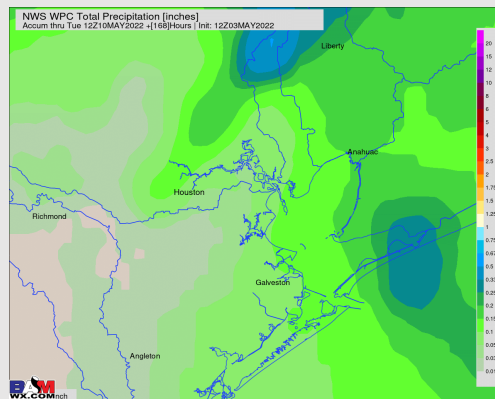
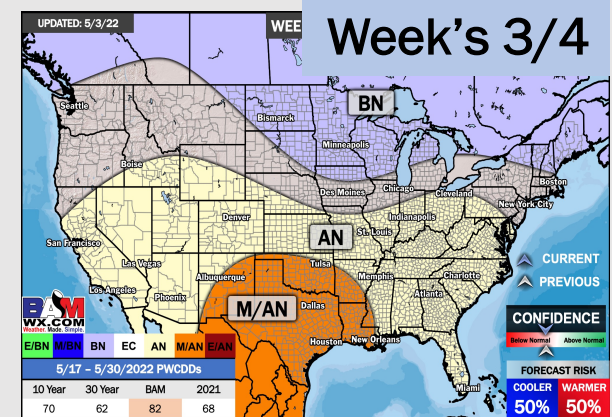
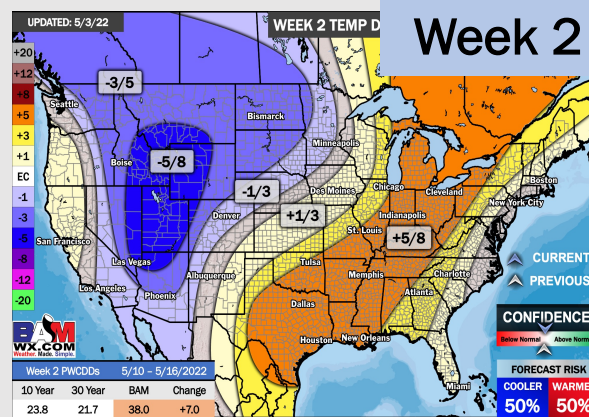
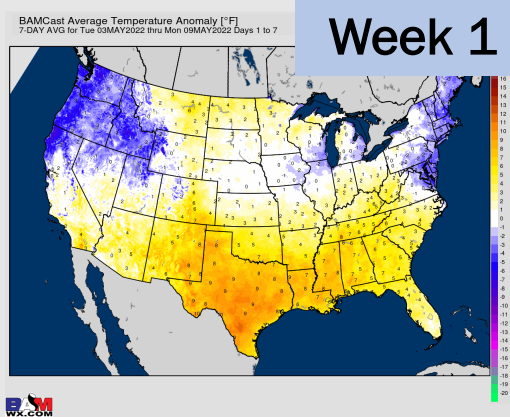


Wind Speed
8 PM CT



High Temps
Saturday

Houston Pilots: 5/5/22



- Anticipating next best shot at precip to be Thu-Fri of this week with dry conditions for the weekend. Temps continue to average out above normal.
- Below normal precipitation is favored for the week 2 timeframe. Temperatures to continue to run above normal for the weeks 2 timeframe.
- Continue to anticipate the best storm threat to stay north of the HOU area. This will keep temperatures up and moisture risks at slightly below normal for the weeks ¾.