

Houston Pilots Forecast Package



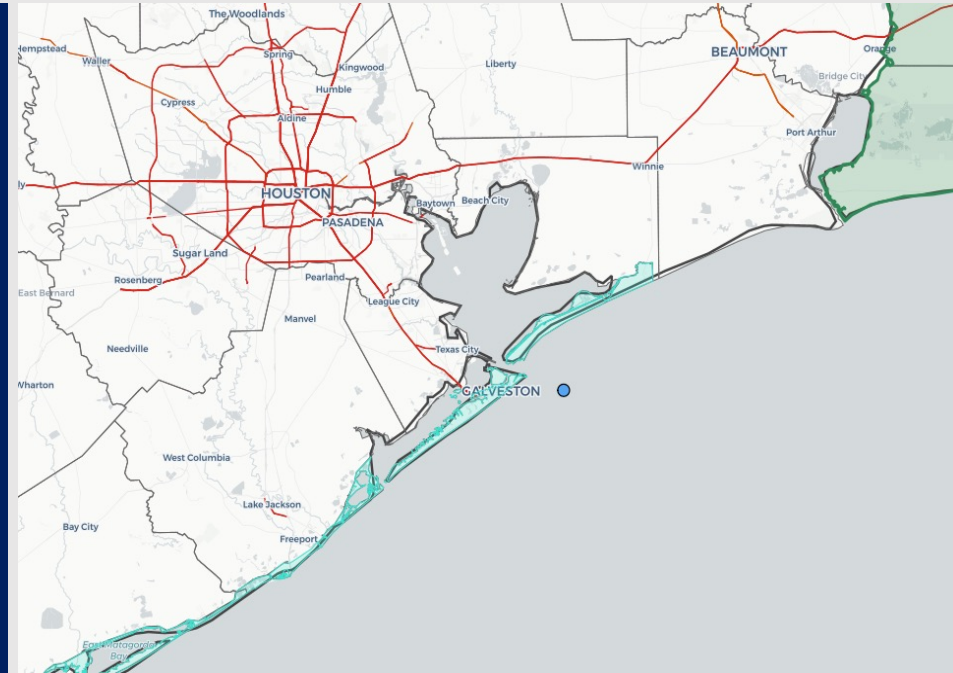
Updated: 2:00 PM CT

Wednesday, May 25, 2022

Forecaster: Vince Bryan

Weather Headlines

- Not seeing a fog threat over at least the next several days.
- With the front behind us, quieter weather is expected over the next few days.
- Winds will generally stay calmer the next few days before the next potential rise in winds into Sunday.

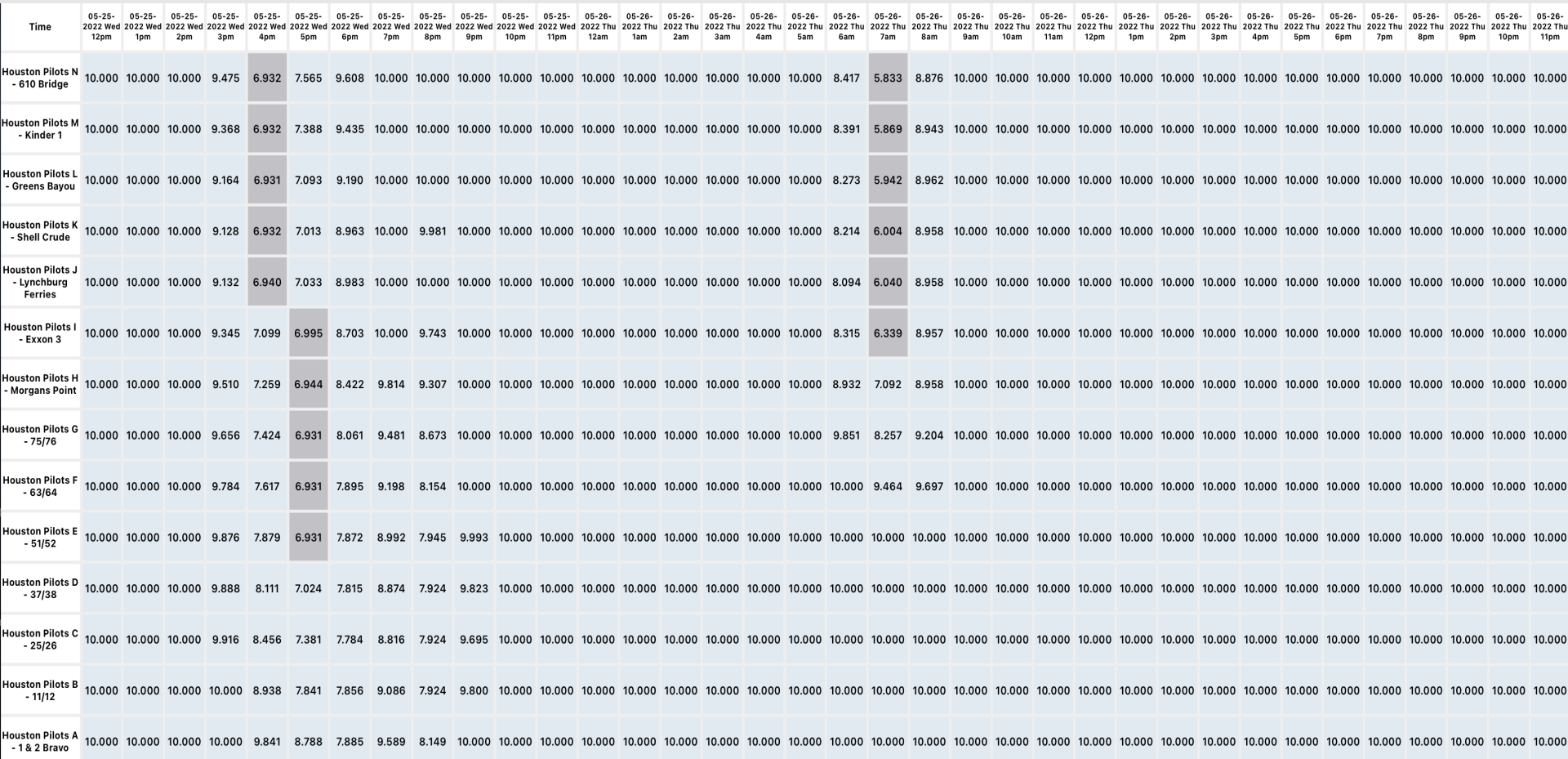


Radar/ NWS Alerts: 2:00 PM CT



As always, please do not hesitate to reach out to us with any forecast questions via the chat option on the Weather Porthole or our on-call number, **(317)-560-8122** press 1 for forecast questions.

The image contains two logos. On the left is the logo for BAM WX.COM, featuring the letters 'BAM' in a stylized font with a white 'A' and a black shadow, followed by 'WX.COM' in black and 'Weather. Made. Simple.' in blue and red below it. On the right is the logo for Houston Pilots, featuring a large red 'HP' monogram and the text 'Houston Pilots' in white to its left.



Houston Pilots Wind Report



Time	05-25-2022 Wed 12pm	05-25-2022 Wed 1pm	05-25-2022 Wed 2pm	05-25-2022 Wed 3pm	05-25-2022 Wed 4pm	05-25-2022 Wed 5pm	05-25-2022 Wed 6pm	05-25-2022 Wed 7pm	05-25-2022 Wed 8pm	05-25-2022 Wed 9pm	05-25-2022 Wed 10pm	05-25-2022 Wed 11pm	05-26-2022 Thu 12am	05-26-2022 Thu 1am	05-26-2022 Thu 2am	05-26-2022 Thu 3am	05-26-2022 Thu 4am	05-26-2022 Thu 5am	05-26-2022 Thu 6am	05-26-2022 Thu 7am	05-26-2022 Thu 8am	05-26-2022 Thu 9am	05-26-2022 Thu 10am	05-26-2022 Thu 11am	05-26-2022 Thu 12pm	05-26-2022 Thu 1pm	05-26-2022 Thu 2pm	05-26-2022 Thu 3pm	05-26-2022 Thu 4pm	05-26-2022 Thu 5pm	05-26-2022 Thu 6pm	05-26-2022 Thu 7pm	05-26-2022 Thu 8pm	05-26-2022 Thu 9pm	05-26-2022 Thu 10pm	05-26-2022 Thu 11pm
Houston Pilots N - 610 Bridge	WS: 7 G:9 NW	WS: 10 G:16 NW	WS: 12 G:18 NW	WS: 9 G:13 NW	WS: 8 G:12 NW	WS: 7 G:8 WNW	WS: 7 G:10 WNW	WS: 5 G:8 NW	WS: 4 G:8 NW	WS: 5 G:10 NW	WS: 5 G:11 NW	WS: 5 G:13 NNW	WS: 4 G:13 N	WS: 2 G:7 ESE	WS: 4 G:6 SE	WS: 2 G:3 SSE	WS: 2 G:3 S	WS: 2 G:2 SSW	WS: 2 G:2 SW	WS: 2 G:3 SW	WS: 3 G:4 SSW	WS: 5 G:7 SSW	WS: 5 G:9 SW	WS: 7 G:11 SW	WS: 7 G:12 WSW	WS: 7 G:14 W	WS: 6 G:15 W	WS: 5 G:16 WNW	WS: 6 G:16 WNW	WS: 5 G:15 WNW	WS: 5 G:14 WSW	WS: 6 G:12 S	WS: 6 G:12 S	WS: 5 G:13 S	WS: 5 G:12 S	WS: 5 G:11 SSW
Houston Pilots M - Kinder 1	WS: 7 G:9 NW	WS: 10 G:16 NW	WS: 12 G:18 NW	WS: 9 G:13 NW	WS: 8 G:11 NW	WS: 7 G:9 WNW	WS: 7 G:10 WNW	WS: 5 G:8 WNW	WS: 4 G:8 NW	WS: 5 G:10 NW	WS: 5 G:11 NW	WS: 5 G:13 NNW	WS: 4 G:13 N	WS: 3 G:6 ESE	WS: 3 G:6 SE	WS: 2 G:3 SSE	WS: 2 G:2 S	WS: 2 G:2 SSW	WS: 2 G:2 SW	WS: 2 G:2 SW	WS: 3 G:4 SSW	WS: 5 G:7 SSW	WS: 5 G:9 SW	WS: 6 G:11 SW	WS: 7 G:12 WSW	WS: 7 G:14 W	WS: 6 G:15 W	WS: 5 G:16 WNW	WS: 6 G:16 WNW	WS: 5 G:15 WNW	WS: 5 G:14 WSW	WS: 6 G:12 S	WS: 5 G:12 S	WS: 5 G:13 S	WS: 5 G:12 S	WS: 5 G:10 SSW
Houston Pilots L - Greens Bayou	WS: 7 G:9 NW	WS: 11 G:16 NW	WS: 12 G:18 NW	WS: 9 G:13 NW	WS: 8 G:11 NW	WS: 7 G:9 WNW	WS: 8 G:11 WNW	WS: 5 G:8 WNW	WS: 4 G:8 NW	WS: 5 G:10 NW	WS: 5 G:11 NNW	WS: 5 G:12 NNW	WS: 4 G:13 N	WS: 3 G:6 ESE	WS: 3 G:6 SE	WS: 2 G:2 SSE	WS: 2 G:2 S	WS: 2 G:2 SSW	WS: 2 G:2 SW	WS: 2 G:2 SW	WS: 3 G:3 SSW	WS: 5 G:6 SSW	WS: 5 G:9 SSW	WS: 6 G:10 SW	WS: 7 G:11 WSW	WS: 7 G:14 W	WS: 6 G:15 W	WS: 6 G:15 WNW	WS: 6 G:15 WNW	WS: 6 G:14 WSW	WS: 6 G:13 SSW	WS: 6 G:12 S	WS: 5 G:12 S	WS: 5 G:13 S	WS: 5 G:10 SSW	
Houston Pilots K - Shell Crude	WS: 8 G:12 NW	WS: 11 G:16 NW	WS: 12 G:18 NW	WS: 8 G:11 NW	WS: 8 G:11 NW	WS: 7 G:9 WNW	WS: 9 G:12 WNW	WS: 5 G:8 WNW	WS: 4 G:8 NW	WS: 5 G:10 NW	WS: 4 G:11 NNW	WS: 4 G:12 NNW	WS: 4 G:13 NNW	WS: 3 G:6 ESE	WS: 3 G:6 ESE	WS: 2 G:2 SSE	WS: 2 G:2 S	WS: 2 G:2 SSW	WS: 2 G:2 SW	WS: 2 G:2 SW	WS: 2 G:3 SSW	WS: 5 G:6 SSW	WS: 5 G:9 SSW	WS: 6 G:10 SW	WS: 7 G:11 WSW	WS: 7 G:13 WSW	WS: 6 G:14 W	WS: 6 G:15 W	WS: 6 G:15 W	WS: 6 G:14 SW	WS: 6 G:13 S	WS: 6 G:12 S	WS: 5 G:13 S	WS: 5 G:12 SSW	WS: 5 G:11 SSW	
Houston Pilots J - Lynchburg Ferries	WS: 8 G:12 WNW	WS: 12 G:16 NW	WS: 12 G:18 NW	WS: 7 G:10 NNW	WS: 8 G:11 NW	WS: 7 G:9 WNW	WS: 8 G:12 WNW	WS: 5 G:8 WNW	WS: 4 G:8 NW	WS: 4 G:10 NNW	WS: 4 G:12 NNW	WS: 4 G:12 NNW	WS: 4 G:13 NNW	WS: 3 G:6 ESE	WS: 3 G:6 ESE	WS: 3 G:3 S	WS: 3 G:3 S	WS: 2 G:3 SSW	WS: 2 G:3 SSW	WS: 3 G:3 WSW	WS: 3 G:4 SSW	WS: 5 G:6 SSW	WS: 5 G:9 SSW	WS: 7 G:10 SSW	WS: 7 G:11 WSW	WS: 7 G:13 WSW	WS: 7 G:14 W	WS: 7 G:15 W	WS: 7 G:15 WSW	WS: 7 G:14 SSW	WS: 7 G:13 S	WS: 7 G:12 S	WS: 6 G:13 S	WS: 6 G:12 SSW	WS: 5 G:11 SSW	
Houston Pilots I - Exxon 3	WS: 9 G:13 WNW	WS: 12 G:16 NW	WS: 13 G:19 NW	WS: 6 G:9 NNW	WS: 8 G:10 NW	WS: 6 G:9 NW	WS: 8 G:12 WNW	WS: 5 G:9 NW	WS: 5 G:10 NW	WS: 4 G:11 NNW	WS: 3 G:13 NNW	WS: 4 G:14 NNW	WS: 4 G:15 N	WS: 3 G:8 E	WS: 3 G:7 ENE	WS: 3 G:4 SE	WS: 3 G:3 SE	WS: 3 G:3 S	WS: 3 G:3 SSW	WS: 3 G:4 SSW	WS: 3 G:4 SSW	WS: 5 G:7 SSW	WS: 5 G:9 SSW	WS: 7 G:10 SSW	WS: 7 G:11 WSW	WS: 8 G:13 WSW	WS: 7 G:14 WSW	WS: 7 G:15 WSW	WS: 7 G:14 SSW	WS: 7 G:14 SSW	WS: 7 G:14 S	WS: 8 G:14 S	WS: 7 G:13 S	WS: 7 G:14 S	WS: 6 G:13 SSW	
Houston Pilots H - Morgans Point	WS: 9 G:13 WNW	WS: 12 G:16 WNW	WS: 14 G:20 NW	WS: 6 G:8 NNW	WS: 8 G:11 NW	WS: 7 G:10 NW	WS: 9 G:12 NW	WS: 7 G:10 NW	WS: 6 G:10 NW	WS: 6 G:12 NNW	WS: 5 G:14 NNW	WS: 6 G:15 W	WS: 6 G:16 N	WS: 5 G:11 NE	WS: 5 G:9 NNE	WS: 4 G:5 NE	WS: 3 G:4 E	WS: 3 G:5 S	WS: 3 G:4 SSW	WS: 4 G:5 SW	WS: 4 G:5 SSW	WS: 5 G:7 SSW	WS: 5 G:8 SSW	WS: 6 G:9 SSW	WS: 6 G:11 SW	WS: 7 G:12 SSW	WS: 7 G:13 SSW	WS: 7 G:13 S	WS: 8 G:14 SSE	WS: 8 G:14 SSE	WS: 8 G:14 S	WS: 8 G:14 S	WS: 8 G:15 S	WS: 8 G:15 S	WS: 8 G:14 SSW	WS: 7 G:14 SSW
Houston Pilots G - 75/76	WS: 11 G:12 WNW	WS: 14 G:16 WNW	WS: 17 G:19 NW	WS: 6 G:9 NNW	WS: 9 G:11 NW	WS: 7 G:10 NNW	WS: 9 G:13 NW	WS: 10 G:14 NW	WS: 10 G:11 NW	WS: 10 G:12 NNW	WS: 10 G:14 NNW	WS: 10 G:15 NNW	WS: 11 G:16 N	WS: 11 G:17 NNE	WS: 11 G:18 NNE	WS: 7 G:9 NNE	WS: 4 G:6 NE	WS: 4 G:6 ESE	WS: 4 G:6 SSE	WS: 4 G:6 S	WS: 5 G:6 S	WS: 5 G:8 SSW	WS: 6 G:9 SSW	WS: 6 G:10 S	WS: 6 G:11 S	WS: 7 G:12 SSE	WS: 7 G:12 SSE	WS: 7 G:14 SSE	WS: 8 G:14 SSE	WS: 9 G:14 S	WS: 9 G:14 S	WS: 9 G:16 S	WS: 10 G:16 S	WS: 10 G:17 SSW	WS: 9 G:17 SSW	WS: 9 G:17 SSW
Houston Pilots F - 63/64	WS: 10 G:12 WNW	WS: 14 G:17 WNW	WS: 16 G:17 NNW	WS: 8 G:11 NNW	WS: 8 G:11 NNW	WS: 8 G:13 NNW	WS: 8 G:13 NNW	WS: 10 G:14 NW	WS: 11 G:12 NW	WS: 12 G:13 NNW	WS: 13 G:14 NNW	WS: 12 G:13 NNW	WS: 14 G:15 N	WS: 15 G:16 NE	WS: 9 G:8 N	WS: 6 G:7 NNE	WS: 5 G:6 NNE	WS: 5 G:6 E	WS: 5 G:6 SE	WS: 5 G:6 SSE	WS: 5 G:6 S	WS: 5 G:8 SSW	WS: 6 G:9 SSW	WS: 6 G:10 S	WS: 7 G:11 SSE	WS: 7 G:12 SSE	WS: 7 G:13 SSE	WS: 8 G:13 SSE	WS: 9 G:14 S	WS: 9 G:14 S	WS: 10 G:15 S	WS: 10 G:16 S	WS: 10 G:17 SSW	WS: 10 G:17 SSW	WS: 10 G:17 SSW	
Houston Pilots E - 51/52	WS: 10 G:11 WNW	WS: 15 G:18 NW	WS: 14 G:15 NW	WS: 11 G:12 NNW	WS: 9 G:12 NW	WS: 8 G:10 NNW	WS: 7 G:12 NNW	WS: 6 G:10 W	WS: 11 G:11 NW	WS: 12 G:12 NW	WS: 13 G:13 NNW	WS: 12 G:12 NNW	WS: 13 G:14 NNW	WS: 16 G:17 SSW	WS: 9 G:10 E	WS: 7 G:9 NNE	WS: 6 G:7 NNE	WS: 5 G:7 ENE	WS: 5 G:7 ESE	WS: 5 G:6 SSE	WS: 5 G:7 SSE	WS: 5 G:8 S	WS: 6 G:9 SSW	WS: 6 G:10 SSW	WS: 6 G:11 SSW	WS: 7 G:12 S	WS: 8 G:13 SSE	WS: 8 G:13 SSE	WS: 9 G:14 S	WS: 9 G:15 S	WS: 10 G:16 S	WS: 10 G:17 S	WS: 11 G:17 SSW	WS: 11 G:17 SSW	WS: 11 G:17 SSW	
Houston Pilots D - 37/38	WS: 10 G:12 WNW	WS: 16 G:20 NW	WS: 11 G:12 NNW	WS: 13 G:13 NNW	WS: 10 G:12 NNW	WS: 8 G:10 NW	WS: 7 G:12 NNW	WS: 4 G:9 S	WS: 8 G:9 NW	WS: 10 G:11 NW	WS: 12 G:13 NNW	WS: 11 G:13 NNW	WS: 12 G:13 WNW	WS: 16 G:16 NW	WS: 10 G:10 E	WS: 8 G:10 NNE	WS: 6 G:7 NNE	WS: 5 G:7 ENE	WS: 5 G:7 ESE	WS: 4 G:6 SE	WS: 5 G:6 SSE	WS: 5 G:8 S	WS: 6 G:9 SSW	WS: 6 G:10 SSW	WS: 7 G:11 SSW	WS: 7 G:12 SSW	WS: 8 G:12 S	WS: 8 G:13 S	WS: 9 G:14 S	WS: 9 G:14 S	WS: 10 G:16 S	WS: 10 G:17 S	WS: 10 G:17 SSW	WS: 11 G:17 SSW	WS: 11 G:17 SSW	
Houston Pilots C - 25/26	WS: 12 G:13 WNW	WS: 15 G:19 WNW	WS: 9 G:10 NNW	WS: 12 G:13 NNW	WS: 11 G:12 NNW	WS: 9 G:10 NNW	WS: 7 G:11 NNW	WS: 4 G:9 S	WS: 8 G:8 SSW	WS: 9 G:10 NW	WS: 11 G:12 NNW	WS: 10 G:12 NNW	WS: 9 G:13 NNW	WS: 13 G:13 W	WS: 15 G:15 ENE	WS: 10 G:12 N	WS: 8 G:10 NNE	WS: 6 G:7 NE	WS: 5 G:6 E	WS: 4 G:6 ESE	WS: 4 G:6 SSE	WS: 4 G:8 SSE	WS: 6 G:8 S	WS: 6 G:9 SSW	WS: 7 G:9 SSW	WS: 7 G:10 SSW	WS: 8 G:11 S	WS: 8 G:12 S	WS: 9 G:13 S	WS: 9 G:14 S	WS: 9 G:15 S	WS: 10 G:16 S	WS: 10 G:16 SSW	WS: 10 G:16 SSW	WS: 10 G:16 SSW	
Houston Pilots B - 11/12	WS: 13 G:14 WNW	WS: 13 G:18 WNW	WS: 7 G:8 NW	WS: 12 G:13 NNW	WS: 12 G:13 NNW	WS: 10 G:11 NW	WS: 8 G:10 NW	WS: 6 G:10 WNW	WS: 5 G:9 SW	WS: 6 G:8 NW	WS: 9 G:11 NW	WS: 8 G:10 NNW	WS: 10 G:12 NNW	WS: 12 G:14 SW	WS: 11 G:13 NE	WS: 8 G:11 NNE	WS: 7 G:9 NNE	WS: 6 G:8 NE	WS: 5 G:6 ENE	WS: 4 G:6 ESE	WS: 4 G:6 SSE	WS: 5 G:7 SSE	WS: 5 G:8 S	WS: 6 G:9 SSW	WS: 7 G:9 SSW	WS: 7 G:10 SSW	WS: 8 G:11 S	WS: 8 G:12 S	WS: 9 G:13 S	WS: 9 G:15 S	WS: 10 G:16 S	WS: 10 G:16 SSW	WS: 10 G:16 SSW	WS: 10 G:16 SSW	WS: 11 G:17 SSW	
Houston Pilots A - 1 & 2 Bravo	WS: 11 G:15 W	WS: 12 G:13 WNW	WS: 5 G:8 NW	WS: 11 G:12 NW	WS: 10 G:13 NW	WS: 11 G:12 NW	WS: 10 G:10 NW	WS: 8 G:10 NW	WS: 8 G:11 NNW	WS: 8 G:10 NNW	WS: 11 G:11 NNW	WS: 11 G:11 NNW	WS: 11 G:11 N	WS: 14 G:14 NNW	WS: 15 G:16 N	WS: 10 G:13 NNE	WS: 9 G:11 NNE	WS: 7 G:9 NE	WS: 6 G:8 ENE	WS: 5 G:7 ENE	WS: 5 G:7 ENE	WS: 5 G:7 SE	WS: 6 G:8 S	WS: 6 G:9 S	WS: 7 G:9 SSW	WS: 8 G:10 SSW	WS: 8 G:10 SSW	WS: 8 G:11 S	WS: 8 G:12 S	WS: 9 G:13 S	WS: 9 G:15 S	WS: 10 G:16 S	WS: 10 G:16 S	WS: 11 G:17 SSW	WS: 11 G:17 SSW	WS: 12 G:17 SSW

See slides below for official thoughts on winds.

Houston Pilots Extended Range Visibility Report



Saturday 5/28/22

Currently not anticipating fog on Saturday with drier air settling in.



Monday 5/30/22

Currently not anticipating fog on Monday.



Sunday 5/29/22

Drier air continues for Sunday, not seeing a fog signal for Sunday.



Daily Fog Chance	
Saturday AM	Unlikely
Sunday AM	Unlikely
Monday AM	Unlikely

Houston Pilots: Wed. 5/25/2022

Forecast Discussion

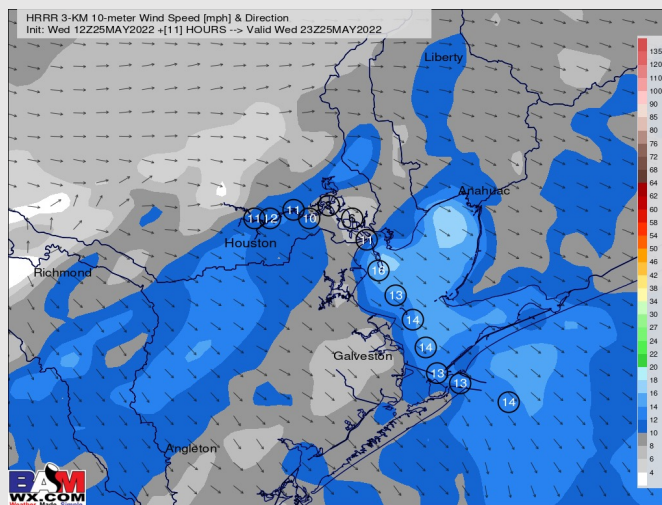
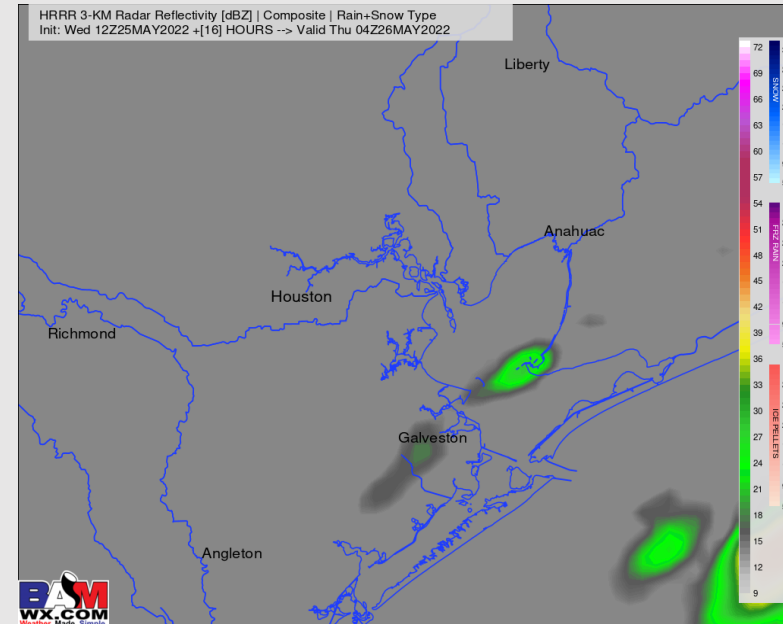
Precip: A 20-30% chance of a very isolated shower will be possible from 9 PM this evening through 5 AM Thursday morning. Any precip is favored to stay primarily east of the stations.

Wind: Winds are expected to be 10-15 MPH sustained with gusts 15-20 MPH the rest of the day out of the NW. Beyond sundown, winds look to weaken to 5-10 MPH sustained.

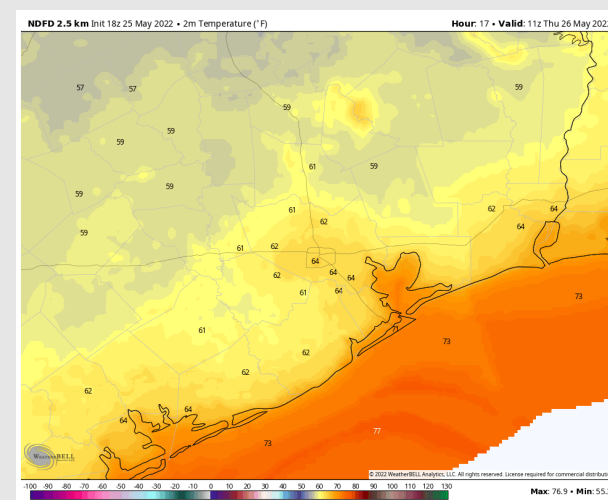
Temps: Lows fall to the lower 60s inland, temps over the boarding station likely stays elevated in the lower 70s.

Visibility: No fog is expected.

Precip Forecast: 10 PM CT



Wind Speed
7 PM CT



High Temps
Today

Houston Pilots: *Thu. 5/26/2022*

Forecast Discussion

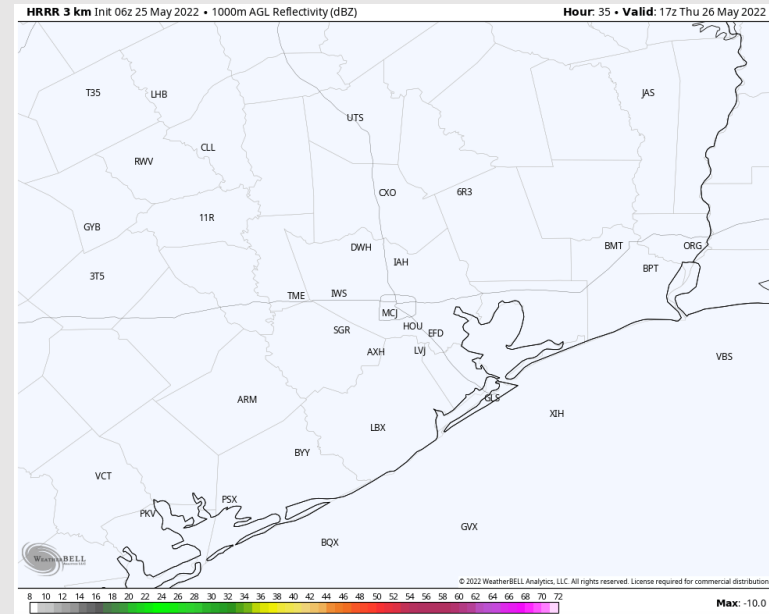
Precip: Anticipating dry conditions on Thursday.

Wind: Winds look to be out of the S at 3-8 MPH until 4 PM. Beyond this, winds become 10-15 MPH sustained with gusts 15-20 MPH into the evening.

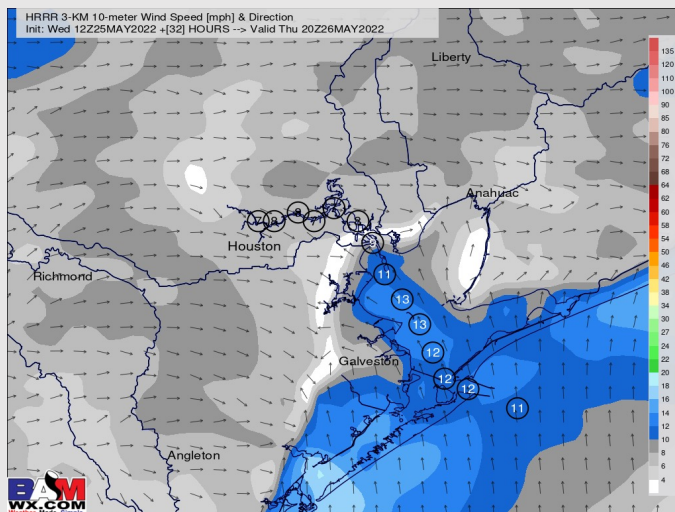
Temps: High temps on Thursday reach the mid 80s F. With upper 80's F near Houston.

Visibility: Currently not anticipating fog for our stations.

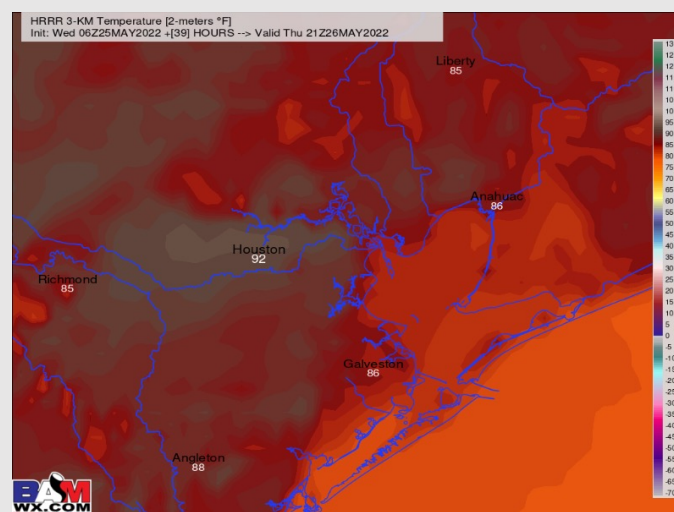
Precip Forecast: Noon CT



Wind Speed
4 PM CT



High Temps
Thursday



Houston Pilots: *Fri. 5/27/2022*

Forecast Discussion

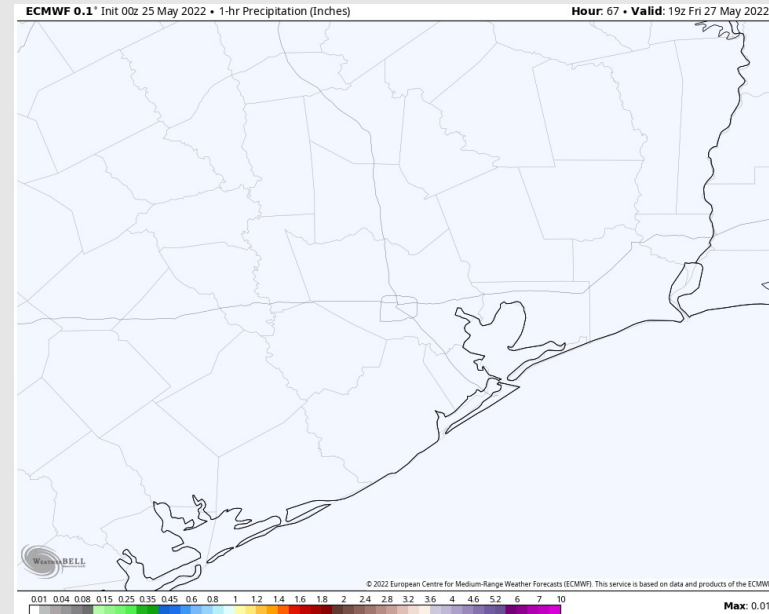
Precip: Dry conditions are anticipated for Friday.

Wind: Winds look to be 8-13 MPH throughout most of Friday shifting from the W/SW. A few gusts to 18 MPH are possible.

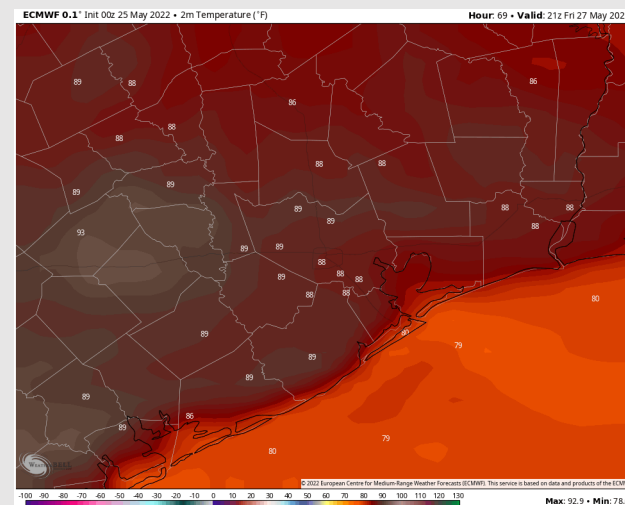
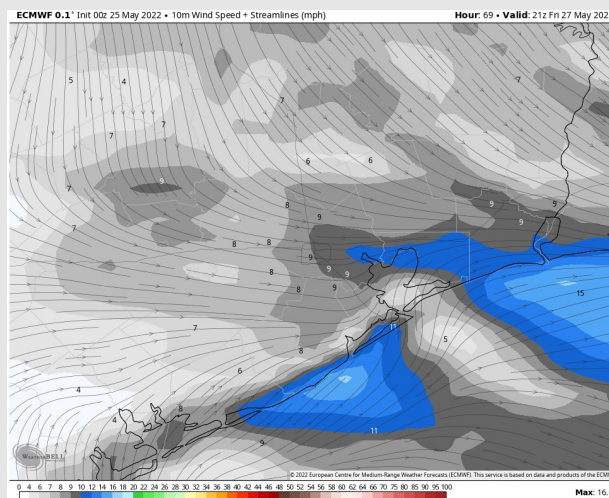
Temps: High temps on Friday look to reach the mid to upper 80s F.

Visibility: Not anticipating fog issues on Friday.

Precip Forecast: 2 PM CT

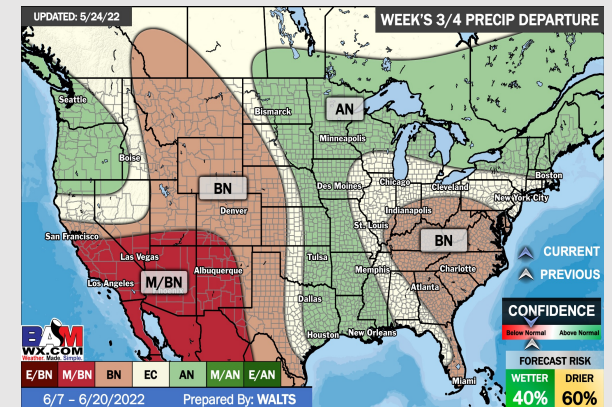
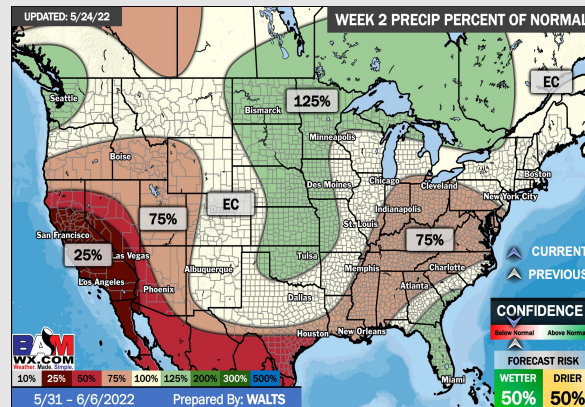
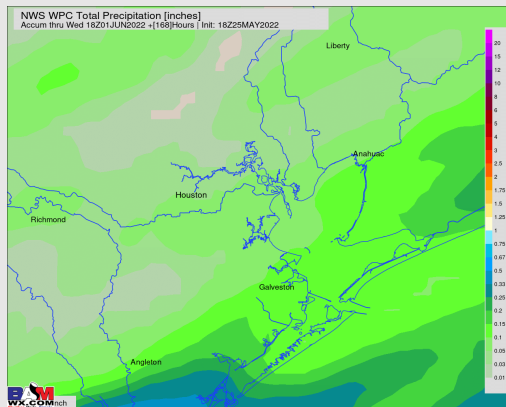
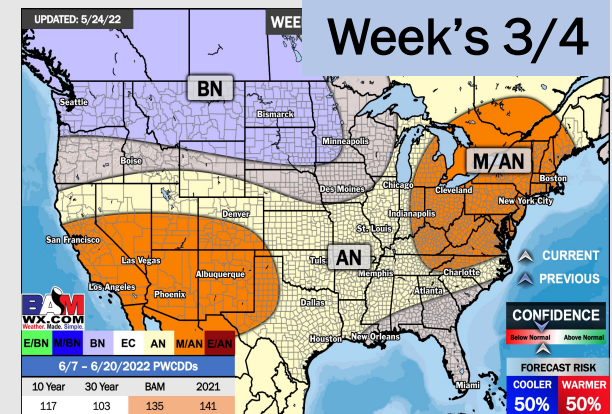
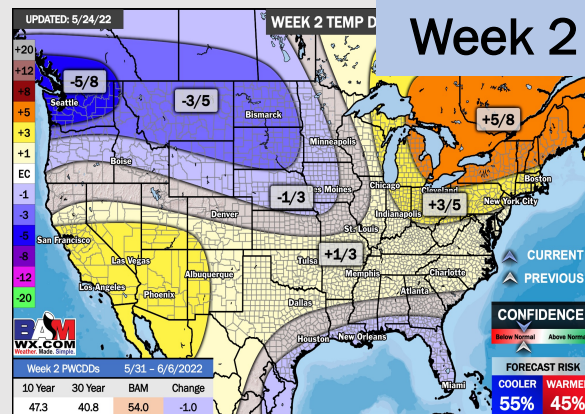
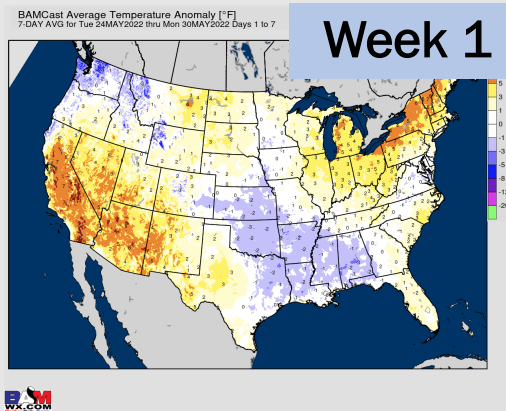


Wind Speed:
4 PM CT



High Temps
Friday

Houston Pilots: 5/25/22



- With the front passed the area, limited precip is favored over the next week. Temps average out near normal this week.
- Week 2 likely features near normal to slightly below normal risks for temperatures, and below normal precipitation.
- The weeks ¾ timeframe looks to features above normal temperatures and slightly above normal risks for precip.