

Houston Pilots Forecast Package



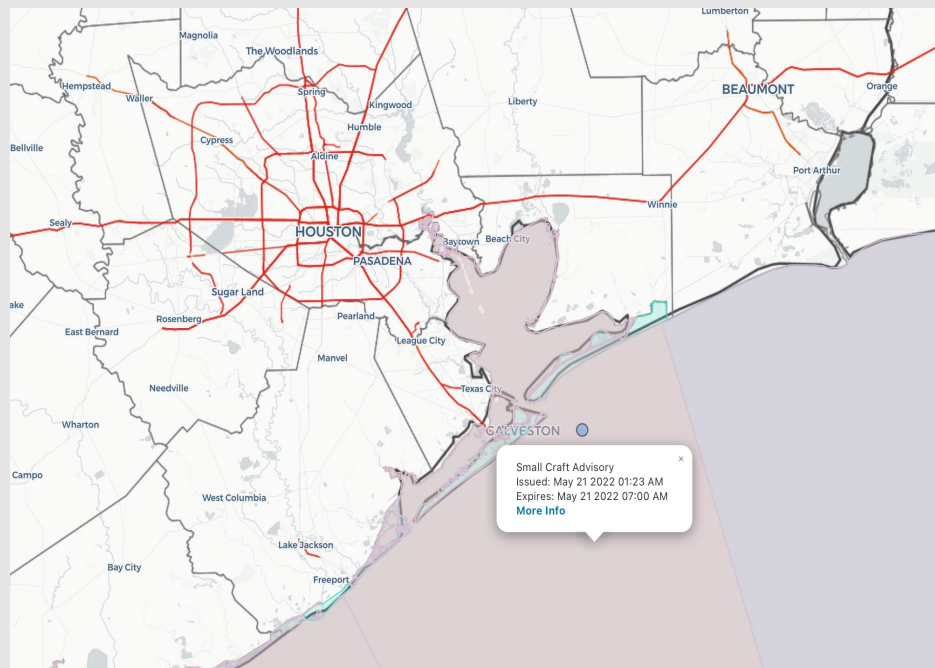
Updated: 5:30 AM CT

Saturday, May 21, 2022

Forecaster: Vince Bryan

Weather Headlines

- No high end fog threats in the coming days.
- Dry conditions are favored to continue today with the next best shot at seeing precip coming in the early morning hours of Sunday. Multiple chances for precip during the coming week.
- Temps look to continue to remain above average until Saturday, with a cooler trend possible starting Sunday.
- No tropical threats to monitor.



Radar/ NWS Alerts: 5:30 AM CT



As always, please do not hesitate to reach out to us with any forecast questions via the chat option on the Weather Porthole or our on-call number, **(317)-560-8122** press 1 for forecast questions.

Houston Pilots Visibility Report



Time	05-21-2022 Sat 4am	05-21-2022 Sat 5am	05-21-2022 Sat 6am	05-21-2022 Sat 7am	05-21-2022 Sat 8am	05-21-2022 Sat 9am	05-21-2022 Sat 10am	05-21-2022 Sat 11am	05-21-2022 Sat 12pm	05-21-2022 Sat 1pm	05-21-2022 Sat 2pm	05-21-2022 Sat 3pm	05-21-2022 Sat 4pm	05-21-2022 Sat 5pm	05-21-2022 Sat 6pm	05-21-2022 Sat 7pm	05-21-2022 Sat 8pm	05-21-2022 Sat 9pm	05-21-2022 Sat 10pm	05-21-2022 Sat 11pm	05-22-2022 Sun 12am	05-22-2022 Sun 1am	05-22-2022 Sun 2am	05-22-2022 Sun 3am	05-22-2022 Sun 4am	05-22-2022 Sun 5am	05-22-2022 Sun 6am	05-22-2022 Sun 7am	05-22-2022 Sun 8am	05-22-2022 Sun 9am	05-22-2022 Sun 10am	05-22-2022 Sun 11am	05-22-2022 Sun 12pm	05-22-2022 Sun 1pm	05-22-2022 Sun 2pm	05-22-2022 Sun 3pm		
Houston Pilots N - 610 Bridge	10.000	10.000	10.000	7.924	7.954	10.000	10.000	10.000	10.000	10.000	10.000	10.000	10.000	10.000	10.000	10.000	10.000	10.000	10.000	10.000	10.000	10.000	10.000	10.000	10.000	10.000	10.000	10.000	10.000	10.000	10.000	8.988	6.944	5.910	4.931	5.261	6.944	
Houston Pilots M - Kinder 1	10.000	10.000	10.000	7.924	7.954	10.000	10.000	10.000	10.000	10.000	10.000	10.000	10.000	10.000	10.000	10.000	10.000	10.000	10.000	10.000	10.000	10.000	10.000	10.000	10.000	10.000	10.000	10.000	10.000	10.000	10.000	8.988	7.493	6.789	6.336	6.700	8.191	
Houston Pilots L - Greens Bayou	10.000	10.000	10.000	9.038	7.954	10.000	10.000	10.000	10.000	10.000	10.000	10.000	10.000	10.000	10.000	10.000	10.000	10.000	10.000	10.000	10.000	10.000	10.000	10.000	10.000	10.000	10.000	10.000	10.000	10.000	10.000	8.988	8.717	9.086	9.086	9.086	9.907	
Houston Pilots K - Shell Crude	10.000	10.000	10.000	9.136	7.954	10.000	10.000	10.000	10.000	10.000	10.000	10.000	10.000	10.000	10.000	10.000	10.000	10.000	10.000	10.000	10.000	10.000	10.000	10.000	10.000	10.000	10.000	10.000	10.000	10.000	10.000	8.988	8.988	10.000	10.000	10.000	10.000	
Houston Pilots J - Lynchburg Ferries	10.000	10.000	10.000	9.136	7.954	10.000	10.000	10.000	10.000	10.000	10.000	10.000	10.000	10.000	10.000	10.000	10.000	10.000	10.000	10.000	10.000	10.000	10.000	10.000	10.000	10.000	10.000	10.000	10.000	10.000	10.000	8.988	8.988	10.000	10.000	10.000	10.000	
Houston Pilots I - Exxon 3	10.000	10.000	10.000	10.000	7.954	10.000	10.000	10.000	10.000	10.000	10.000	10.000	10.000	10.000	10.000	10.000	10.000	10.000	10.000	10.000	10.000	10.000	10.000	10.000	10.000	10.000	10.000	10.000	10.000	10.000	10.000	8.988	8.988	10.000	10.000	10.000	10.000	
Houston Pilots H - Morgans Point	10.000	10.000	10.000	10.000	7.954	10.000	10.000	10.000	10.000	10.000	10.000	10.000	10.000	10.000	10.000	10.000	10.000	10.000	10.000	10.000	10.000	10.000	10.000	10.000	10.000	10.000	10.000	10.000	10.000	10.000	10.000	9.350	10.000	10.000	10.000	10.000	10.000	
Houston Pilots G - 75/76	10.000	10.000	10.000	10.000	7.954	10.000	10.000	10.000	10.000	10.000	10.000	10.000	10.000	10.000	10.000	10.000	10.000	10.000	10.000	10.000	10.000	10.000	10.000	10.000	10.000	10.000	10.000	10.000	10.000	10.000	10.000	10.000	10.000	10.000	10.000	10.000	10.000	
Houston Pilots F - 63/64	10.000	10.000	10.000	10.000	7.954	10.000	10.000	10.000	10.000	10.000	10.000	10.000	10.000	10.000	10.000	10.000	10.000	10.000	10.000	10.000	10.000	10.000	10.000	10.000	10.000	10.000	10.000	10.000	10.000	10.000	10.000	10.000	10.000	8.988	10.000	10.000	10.000	10.000
Houston Pilots E - 51/52	10.000	10.000	10.000	10.000	7.954	10.000	10.000	10.000	10.000	10.000	10.000	10.000	10.000	10.000	10.000	10.000	10.000	10.000	10.000	10.000	10.000	10.000	10.000	10.000	10.000	10.000	10.000	10.000	10.000	10.000	10.000	9.790	8.988	10.000	10.000	10.000	10.000	
Houston Pilots D - 37/38	10.000	10.000	10.000	10.000	7.954	10.000	10.000	10.000	10.000	10.000	10.000	10.000	10.000	10.000	10.000	10.000	9.862	10.000	9.862	10.000	10.000	10.000	10.000	10.000	10.000	10.000	10.000	10.000	10.000	10.000	10.000	8.988	8.988	10.000	10.000	10.000	10.000	
Houston Pilots C - 25/26	10.000	10.000	10.000	9.158	7.954	10.000	10.000	10.000	10.000	10.000	10.000	9.984	10.000	10.000	10.000	10.000	8.988	8.988	8.988	10.000	10.000	10.000	10.000	10.000	10.000	10.000	10.000	10.000	10.000	10.000	10.000	8.988	8.988	10.000	10.000	10.000	10.000	
Houston Pilots B - 11/12	10.000	10.000	10.000	9.038	7.954	10.000	10.000	10.000	10.000	10.000	10.000	9.038	10.000	10.000	10.000	10.000	8.988	8.988	8.988	10.000	10.000	10.000	10.000	10.000	10.000	10.000	10.000	10.000	10.000	10.000	10.000	8.988	8.988	9.369	10.000	10.000	10.000	10.000
Houston Pilots A - 1 & 2 Bravo	10.000	10.000	10.000	9.038	7.954	7.954	10.000	10.000	10.000	10.000	9.038	7.359	6.890	6.890	6.890	6.890	8.988	8.988	8.988	8.988	8.988	9.822	9.822	9.822	9.822	9.822	9.822	9.822	9.822	9.822	9.822	9.822	8.988	8.988	10.000	10.000	10.000	10.000

Houston Pilots Wind Report



Confidence

Above Normal

Below Normal

Sustained wind 13 MPH

Gusts 18 MPH

Wind from the N

Example

WS: 13
G:18
N

Time	05-21-2022 Sat 4am	05-21-2022 Sat 5am	05-21-2022 Sat 6am	05-21-2022 Sat 7am	05-21-2022 Sat 8am	05-21-2022 Sat 9am	05-21-2022 Sat 10am	05-21-2022 Sat 11am	05-21-2022 Sat 12pm	05-21-2022 Sat 1pm	05-21-2022 Sat 2pm	05-21-2022 Sat 3pm	05-21-2022 Sat 4pm	05-21-2022 Sat 5pm	05-21-2022 Sat 6pm	05-21-2022 Sat 7pm	05-21-2022 Sat 8pm	05-21-2022 Sat 9pm	05-21-2022 Sat 10pm	05-21-2022 Sat 11pm	05-22-2022 Sun 12am	05-22-2022 Sun 1am	05-22-2022 Sun 2am	05-22-2022 Sun 3am	05-22-2022 Sun 4am	05-22-2022 Sun 5am	05-22-2022 Sun 6am	05-22-2022 Sun 7am	05-22-2022 Sun 8am	05-22-2022 Sun 9am	05-22-2022 Sun 10am	05-22-2022 Sun 11am	05-22-2022 Sun 12pm	05-22-2022 Sun 1pm	05-22-2022 Sun 2pm	05-22-2022 Sun 3pm	
Houston Pilots N - 610 Bridge	WS: 7 G:20 SSE	WS: 8 G:20 SE	WS: 8 G:23 SSE	WS: 7 G:23 SSE	WS: 10 G:25 SSE	WS: 12 G:25 S	WS: 13 G:23 S	WS: 14 G:23 SSE	WS: 15 G:23 SSE	WS: 15 G:22 SSE	WS: 15 G:22 SSE	WS: 15 G:22 SSE	WS: 15 G:22 SSE	WS: 15 G:21 SSE	WS: 15 G:22 SSE	WS: 14 G:22 SSE	WS: 13 G:19 SSE	WS: 12 G:17 SSE	WS: 10 G:15 SE	WS: 8 G:12 SSE	WS: 7 G:12 SSE	WS: 7 G:12 SE	WS: 6 G:11 ESE	WS: 6 G:13 NE	WS: 5 G:13 NE	WS: 5 G:12 NE	WS: 4 G:9 ENE	WS: 4 G:8 NW	WS: 5 G:9 NNE	WS: 6 G:10 NE	WS: 6 G:10 NE	WS: 7 G:11 NNE	WS: 7 G:11 NE	WS: 7 G:12 NE	WS: 7 G:12 ENE	WS: 7 G:12 ENE	
Houston Pilots M - Kinder 1	WS: 7 G:21 SSE	WS: 8 G:21 SE	WS: 8 G:24 SSE	WS: 7 G:23 SSE	WS: 10 G:26 SSE	WS: 12 G:26 S	WS: 13 G:24 S	WS: 14 G:23 SSE	WS: 15 G:23 SSE	WS: 15 G:22 SSE	WS: 15 G:22 SSE	WS: 15 G:22 SSE	WS: 15 G:22 SSE	WS: 15 G:21 SSE	WS: 15 G:22 SSE	WS: 14 G:22 SSE	WS: 14 G:19 SSE	WS: 12 G:17 SSE	WS: 10 G:15 SE	WS: 8 G:13 SSE	WS: 7 G:12 SSE	WS: 6 G:12 SE	WS: 6 G:11 ESE	WS: 6 G:13 NE	WS: 6 G:13 NE	WS: 5 G:12 NE	WS: 4 G:9 ENE	WS: 4 G:8 NW	WS: 5 G:9 NNE	WS: 6 G:10 NE	WS: 6 G:10 NE	WS: 7 G:11 NE	WS: 7 G:11 NE	WS: 7 G:12 NE	WS: 7 G:12 ENE	WS: 7 G:12 ENE	
Houston Pilots L - Greens Bayou	WS: 7 G:22 SSE	WS: 8 G:22 SSE	WS: 8 G:24 SSE	WS: 7 G:24 SSE	WS: 10 G:26 SSE	WS: 12 G:26 S	WS: 13 G:24 SSE	WS: 14 G:24 SSE	WS: 15 G:22 SSE	WS: 15 G:21 SSE	WS: 15 G:21 SSE	WS: 16 G:22 SSE	WS: 16 G:23 SSE	WS: 16 G:23 SSE	WS: 16 G:23 SSE	WS: 15 G:23 SSE	WS: 14 G:19 SSE	WS: 12 G:17 SSE	WS: 10 G:15 SE	WS: 8 G:13 SSE	WS: 7 G:11 SSE	WS: 6 G:11 SE	WS: 6 G:10 SE	WS: 6 G:11 SE	WS: 6 G:13 NE	WS: 6 G:13 NE	WS: 5 G:12 ENE	WS: 4 G:9 ENE	WS: 4 G:8 ENE	WS: 5 G:9 SE	WS: 6 G:10 NE	WS: 6 G:10 NE	WS: 7 G:11 NE	WS: 7 G:11 NE	WS: 7 G:12 ENE	WS: 7 G:12 ENE	WS: 7 G:12 ENE
Houston Pilots K - Shell Crude	WS: 7 G:22 SSE	WS: 8 G:22 SSE	WS: 9 G:24 SSE	WS: 8 G:24 SSE	WS: 10 G:26 SSE	WS: 12 G:26 S	WS: 13 G:24 SSE	WS: 14 G:24 SSE	WS: 15 G:22 SSE	WS: 15 G:21 SSE	WS: 15 G:22 SSE	WS: 16 G:23 SSE	WS: 16 G:23 SSE	WS: 16 G:23 SSE	WS: 16 G:23 SSE	WS: 16 G:24 SSE	WS: 14 G:19 SSE	WS: 12 G:17 SSE	WS: 10 G:16 SSE	WS: 8 G:13 SSE	WS: 7 G:12 SSE	WS: 7 G:11 SE	WS: 6 G:11 SE	WS: 6 G:13 NE	WS: 6 G:13 NE	WS: 5 G:12 ENE	WS: 4 G:9 ENE	WS: 4 G:8 WNW	WS: 5 G:9 SE	WS: 6 G:10 NE	WS: 6 G:10 NE	WS: 7 G:11 NE	WS: 7 G:11 NE	WS: 7 G:12 ENE	WS: 7 G:12 ENE	WS: 8 G:12 ENE	
Houston Pilots J - Lynchburg Ferries	WS: 7 G:22 SSE	WS: 8 G:23 SSE	WS: 9 G:24 SSE	WS: 9 G:25 SSE	WS: 11 G:26 S	WS: 13 G:26 S	WS: 13 G:24 SSE	WS: 14 G:24 SSE	WS: 15 G:23 SSE	WS: 16 G:22 SSE	WS: 16 G:22 SSE	WS: 16 G:24 SSE	WS: 17 G:25 SSE	WS: 17 G:25 SSE	WS: 16 G:25 SSE	WS: 15 G:19 SSE	WS: 13 G:17 SSE	WS: 11 G:16 SSE	WS: 9 G:13 SSE	WS: 8 G:12 SSE	WS: 7 G:12 SSE	WS: 7 G:11 SE	WS: 7 G:11 SE	WS: 7 G:13 NE	WS: 7 G:14 NE	WS: 7 G:12 ENE	WS: 5 G:9 ENE	WS: 5 G:8 NW	WS: 6 G:9 WNW	WS: 7 G:10 NE	WS: 7 G:11 NE	WS: 7 G:11 NE	WS: 8 G:11 ENE	WS: 8 G:11 ENE	WS: 8 G:12 ENE	WS: 8 G:12 ENE	
Houston Pilots I - Exxon 3	WS: 9 G:23 S	WS: 10 G:24 SSE	WS: 11 G:25 SSE	WS: 11 G:26 SSE	WS: 12 G:26 S	WS: 13 G:25 S	WS: 14 G:23 SSE	WS: 14 G:23 SSE	WS: 16 G:23 SSE	WS: 16 G:22 SSE	WS: 17 G:23 SSE	WS: 18 G:25 SSE	WS: 17 G:25 SSE	WS: 17 G:25 SSE	WS: 17 G:26 SSE	WS: 16 G:20 SSE	WS: 13 G:18 SSE	WS: 11 G:16 SSE	WS: 10 G:14 SSE	WS: 9 G:13 SSE	WS: 8 G:12 SSE	WS: 8 G:12 SSE	WS: 7 G:14 NNE	WS: 8 G:14 NE	WS: 8 G:15 NE	WS: 7 G:11 ENE	WS: 6 G:11 ENE	WS: 5 G:9 SW	WS: 6 G:10 NW	WS: 7 G:11 NE	WS: 7 G:11 NE	WS: 8 G:11 NE	WS: 8 G:11 ENE	WS: 8 G:11 ENE	WS: 8 G:12 ENE	WS: 9 G:12 ENE	
Houston Pilots H - Morgans Point	WS: 12 G:24 S	WS: 14 G:25 SSE	WS: 15 G:26 SSE	WS: 15 G:27 SSE	WS: 15 G:27 S	WS: 15 G:25 S	WS: 15 G:24 SSE	WS: 16 G:23 SSE	WS: 17 G:23 SSE	WS: 17 G:23 SSE	WS: 18 G:24 SSE	WS: 19 G:25 SSE	WS: 19 G:25 SSE	WS: 19 G:25 SSE	WS: 16 G:21 SSE	WS: 14 G:19 SSE	WS: 13 G:18 SSE	WS: 12 G:16 SSE	WS: 11 G:15 SSE	WS: 10 G:14 SSE	WS: 9 G:13 SSE	WS: 8 G:13 SSE	WS: 9 G:14 ENE	WS: 9 G:16 NE	WS: 8 G:14 ENE	WS: 7 G:13 ENE	WS: 6 G:13 ENE	WS: 7 G:11 WNW	WS: 7 G:11 NE	WS: 8 G:11 NE	WS: 7 G:11 NE	WS: 8 G:11 ENE	WS: 8 G:11 ENE	WS: 8 G:12 ENE	WS: 9 G:13 ENE	WS: 9 G:13 ENE	
Houston Pilots G - 75/76	WS: 17 G:26 S	WS: 20 G:26 SSE	WS: 20 G:27 SSE	WS: 20 G:29 SSE	WS: 19 G:30 SSE	WS: 18 G:27 S	WS: 17 G:24 SSE	WS: 17 G:24 SSE	WS: 19 G:24 SSE	WS: 20 G:24 SSE	WS: 21 G:25 SSE	WS: 21 G:25 SSE	WS: 22 G:26 SSE	WS: 22 G:27 SSE	WS: 17 G:22 SSE	WS: 16 G:21 SSE	WS: 15 G:20 SSE	WS: 13 G:18 SSE	WS: 12 G:18 SSE	WS: 11 G:16 SSE	WS: 10 G:15 SSE	WS: 9 G:14 SSE	WS: 8 G:13 SSE	WS: 9 G:15 ESE	WS: 11 G:16 NE	WS: 11 G:16 NE	WS: 9 G:15 ENE	WS: 8 G:14 ENE	WS: 8 G:14 ENE	WS: 9 G:12 ENE	WS: 8 G:12 ENE	WS: 8 G:12 ENE	WS: 8 G:12 ENE	WS: 8 G:12 ENE	WS: 9 G:14 ENE	WS: 10 G:14 ENE	
Houston Pilots F - 63/64	WS: 18 G:26 S	WS: 20 G:27 SSE	WS: 20 G:28 SSE	WS: 21 G:30 SSE	WS: 20 G:30 SSE	WS: 19 G:28 SSE	WS: 17 G:25 SSE	WS: 18 G:24 SSE	WS: 19 G:23 SSE	WS: 20 G:23 SSE	WS: 21 G:24 SSE	WS: 21 G:24 SSE	WS: 21 G:25 SSE	WS: 22 G:26 SSE	WS: 17 G:22 SSE	WS: 16 G:22 SSE	WS: 15 G:21 SSE	WS: 14 G:19 SSE	WS: 13 G:18 SSE	WS: 12 G:17 SSE	WS: 11 G:16 SSE	WS: 10 G:15 SSE	WS: 10 G:15 SSE	WS: 11 G:17 NE	WS: 12 G:17 NE	WS: 10 G:16 ENE	WS: 9 G:15 ENE	WS: 10 G:14 ENE	WS: 10 G:15 WSW	WS: 9 G:13 ENE	WS: 8 G:12 ENE	WS: 8 G:12 ENE	WS: 9 G:12 ENE	WS: 10 G:12 ENE	WS: 10 G:14 ENE	WS: 10 G:14 ENE	
Houston Pilots E - 51/52	WS: 19 G:27 S	WS: 20 G:27 SSE	WS: 21 G:28 SSE	WS: 22 G:31 SSE	WS: 20 G:29 SSE	WS: 19 G:28 SSE	WS: 17 G:26 SSE	WS: 18 G:25 SSE	WS: 18 G:24 SSE	WS: 19 G:23 SSE	WS: 20 G:23 SSE	WS: 20 G:23 SSE	WS: 20 G:23 SSE	WS: 22 G:25 SSE	WS: 18 G:22 SSE	WS: 17 G:22 SSE	WS: 16 G:21 SSE	WS: 15 G:20 SSE	WS: 13 G:19 SSE	WS: 13 G:17 SSE	WS: 12 G:17 SSE	WS: 11 G:16 SSE	WS: 11 G:15 SSE	WS: 11 G:16 NE	WS: 12 G:17 NE	WS: 10 G:16 ENE	WS: 9 G:15 ENE	WS: 10 G:14 ENE	WS: 10 G:15 ENE	WS: 9 G:13 ENE	WS: 9 G:13 ENE	WS: 8 G:12 ENE	WS: 8 G:12 ENE	WS: 9 G:12 ENE	WS: 10 G:13 ENE	WS: 10 G:14 ENE	
Houston Pilots D - 37/38	WS: 19 G:28 S	WS: 18 G:26 SSE	WS: 20 G:28 SSE	WS: 20 G:31 SSE	WS: 19 G:29 SSE	WS: 19 G:28 SSE	WS: 17 G:26 SSE	WS: 18 G:25 SSE	WS: 18 G:23 SSE	WS: 19 G:23 SSE	WS: 18 G:22 SSE	WS: 18 G:22 SSE	WS: 19 G:22 SSE	WS: 20 G:25 SSE	WS: 16 G:22 SSE	WS: 17 G:22 SSE	WS: 15 G:21 SSE	WS: 14 G:19 SSE	WS: 13 G:17 SSE	WS: 13 G:17 SSE	WS: 12 G:16 SSE	WS: 11 G:15 SSE	WS: 11 G:16 NE	WS: 12 G:17 NE	WS: 11 G:16 ENE	WS: 10 G:15 ENE	WS: 10 G:14 ENE	WS: 10 G:15 ENE	WS: 9 G:14 ENE	WS: 9 G:13 ENE	WS: 8 G:12 ENE	WS: 9 G:13 ENE	WS: 10 G:13 ENE	WS: 10 G:14 ENE	WS: 10 G:14 ENE		
Houston Pilots C - 25/26	WS: 17 G:27 SSE	WS: 16 G:26 SSE	WS: 17 G:28 SSE	WS: 18 G:30 SSE	WS: 17 G:29 SSE	WS: 16 G:28 SSE	WS: 16 G:25 SSE	WS: 16 G:24 SSE	WS: 17 G:23 SSE	WS: 18 G:23 SSE	WS: 17 G:22 SSE	WS: 17 G:22 SSE	WS: 17 G:21 SSE	WS: 17 G:22 SSE	WS: 19 G:24 SSE	WS: 18 G:22 SSE	WS: 17 G:22 SSE	WS: 16 G:21 SSE	WS: 14 G:19 SSE	WS: 13 G:17 SSE	WS: 12 G:17 SSE	WS: 11 G:16 SSE	WS: 11 G:15 SSE	WS: 11 G:16 NE	WS: 12 G:16 NE	WS: 10 G:15 ENE	WS: 10 G:14 ENE	WS: 10 G:15 ENE	WS: 9 G:14 ENE	WS: 9 G:14 ENE	WS: 8 G:13 ENE	WS: 9 G:13 ENE	WS: 10 G:13 ENE	WS: 10 G:14 ENE	WS: 10 G:14 ENE		
Houston Pilots B - 11/12	WS: 19 G:28 SSE	WS: 17 G:26 SSE	WS: 18 G:28 S	WS: 19 G:30 SSE	WS: 18 G:29 SSE	WS: 17 G:26 SSE	WS: 15 G:24 SSE	WS: 16 G:23 SSE	WS: 16 G:23 SSE	WS: 17 G:23 SSE	WS: 17 G:22 SSE	WS: 17 G:22 SSE	WS: 17 G:21 SSE	WS: 17 G:21 SSE	WS: 19 G:24 SSE	WS: 18 G:22 SSE	WS: 17 G:22 SSE	WS: 16 G:21 SSE	WS: 15 G:20 SSE	WS: 14 G:18 SSE	WS: 13 G:17 SSE	WS: 12 G:16 SSE	WS: 10 G:15 SSE	WS: 11 G:14 SE	WS: 12 G:16 NE	WS: 11 G:15 ENE	WS: 10 G:14 ENE	WS: 10 G:15 ENE	WS: 10 G:14 ENE	WS: 9 G:13 ENE	WS: 9 G:13 ENE	WS: 10 G:13 ENE	WS: 10 G:13 ENE	WS: 10 G:14 ENE	WS: 10 G:15 ENE		
Houston Pilots A - 1 & 2 Bravo	WS: 22 G:32 SSE	WS: 20 G:28 SSE	WS: 21 G:29 S	WS: 21 G:31 SSE	WS: 20 G:30 SSE	WS: 18 G:26 SSE	WS: 16 G:24 SSE	WS: 16 G:23 SSE	WS: 17 G:23 SSE	WS: 18 G:24 SSE	WS: 18 G:23 SSE	WS: 18 G:23 SSE	WS: 17 G:22 SSE	WS: 19 G:22 SSE	WS: 20 G:25 SSE	WS: 19 G:23 SSE	WS: 18 G:23 SSE	WS: 18 G:23 SSE	WS: 17 G:22 SSE	WS: 15 G:20 SSE	WS: 14 G:19 SSE	WS: 14 G:17 SSE	WS: 12 G:16 SSE	WS: 12 G:16 SSE	WS: 13 G:17 NE	WS: 12 G:16 ENE	WS: 11 G:15 ENE	WS: 11 G:16 ENE	WS: 10 G:15 ESE	WS: 10 G:16 ESE	WS: 9 G:15 ENE	WS: 10 G:15 ENE	WS: 10 G:15 ENE	WS: 10 G:15 ENE	WS: 10 G:16 ENE		

See slides below for official thoughts on winds

See slides below for official thoughts on winds.

Houston Pilots Extended Range Visibility Report



Tuesday, 5/24/22

There is the chance for showers and thunderstorms throughout the day on Tuesday. Brief reductions in visibility is possible in heavier rains.

Confidence



Thursday 5/26/22

No fog is expected on the day Thursday.

Confidence



Wednesday 5/25/22

Signs are pointing for a front to bring showers and thunderstorms to the area Wednesday late morning/early afternoon. Brief reductions in visibility can occur within heavier rains.

Confidence



Daily Fog Chance	
Tuesday AM	Unlikely
Wednesday AM	Unlikely
Thursday AM	Unlikely

Houston Pilots: Sat. 5/21/2022

Forecast Discussion

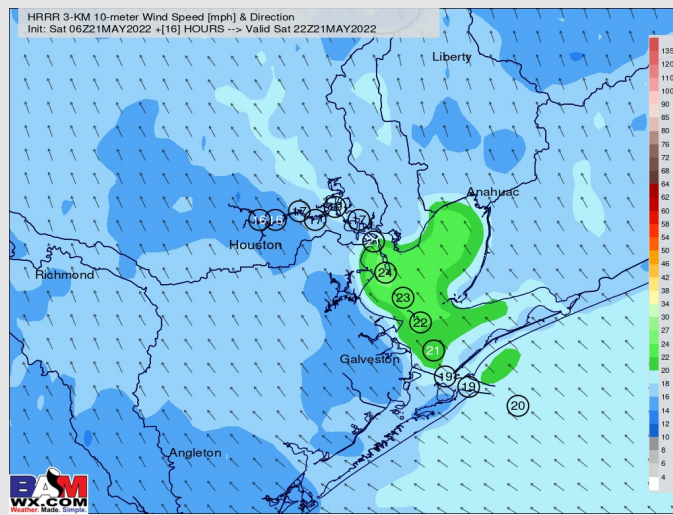
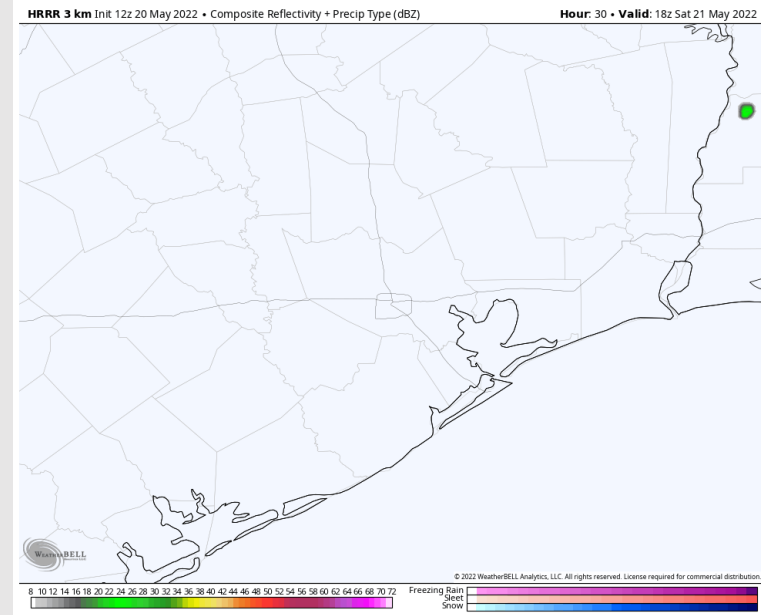
Precip: An isolated shower cannot be ruled out mid-afternoon (~10%), however most of the day is favored to stay dry. The best chances for a line of showers/thunderstorms arrive closer to daybreak tomorrow.

Wind: Winds look to be 18-23 MPH sustained out of the SE (gusts 23-28 MPH).

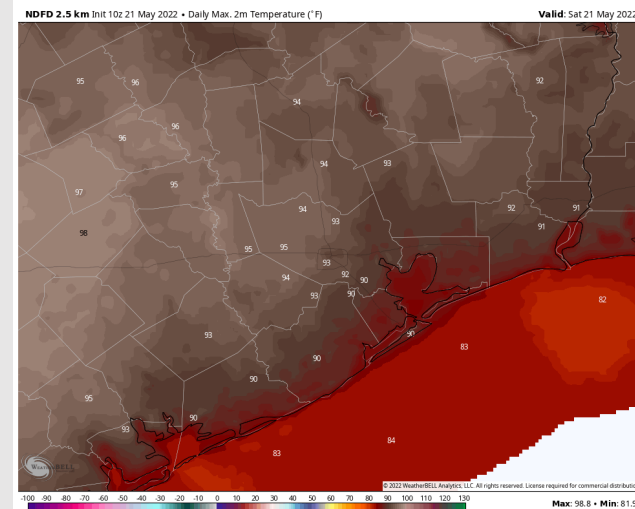
Temps: Highs will remain into the upper 80s for the stations.

Visibility: Currently not anticipating fog today.

Precip Forecast: 3 PM CT



Wind Speed:
4 PM CT



Highs
Saturday

Houston Pilots: *Sun. 5/22/2022*

Forecast Discussion

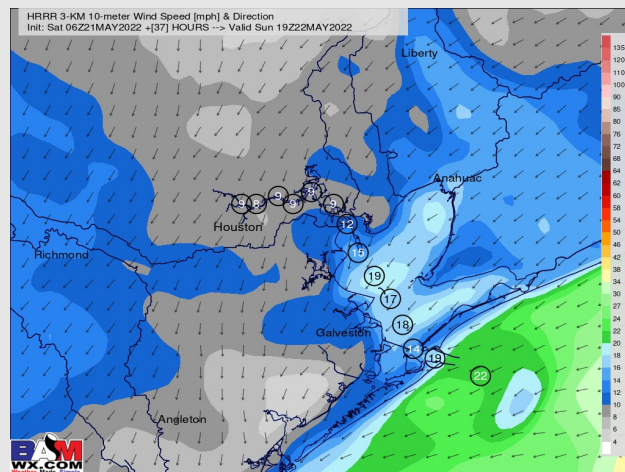
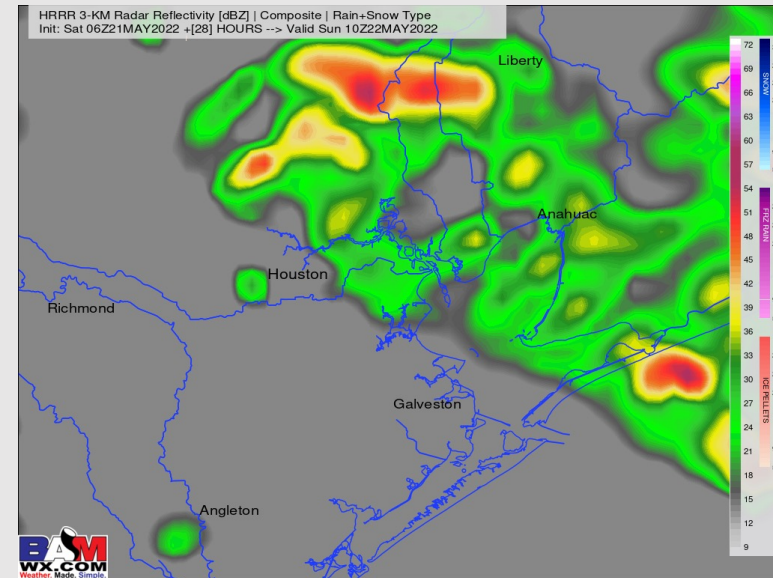
Precip: A line of showers and thunderstorms likely move through early Sun AM. There continues to be a touch lower confidence on initial timing, but favoring the 6-9 AM window for leading edge of rain. A few rounds of heavier rains will be possible.

Wind: Winds SE from 13-18 MPH until 6 AM when precip works into the forecast. Winds will be very dependent on the precipitation around, but overall NE winds are favored most of the day. Gusts of 30-35+ MPH within heavier precip would be possible. Sustained winds will vary through the day, but would favor 15-20 MPH before calming at night.

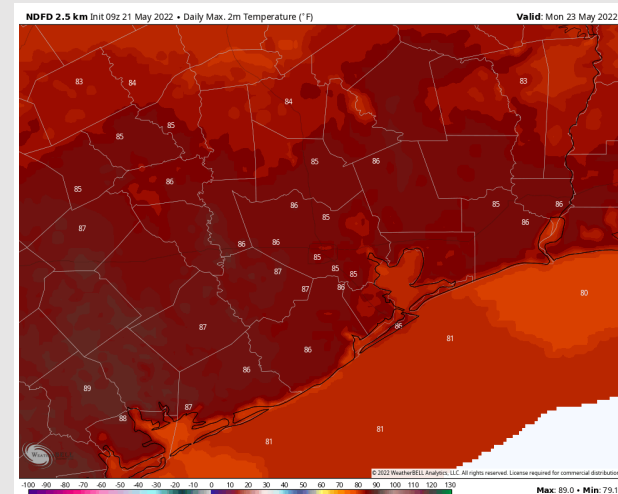
Temps: Highs after the front will fall back to the low to mid 80s.

Visibility: Slight reduction in visibility is possible in a heavy shower, widespread reduced visibility is not expected at this time.

Precip Forecast: 6 AM CT



Wind Speed
3 PM CT



Highs
Sunday

Houston Pilots: Mon. 5/23/2022

Forecast Discussion

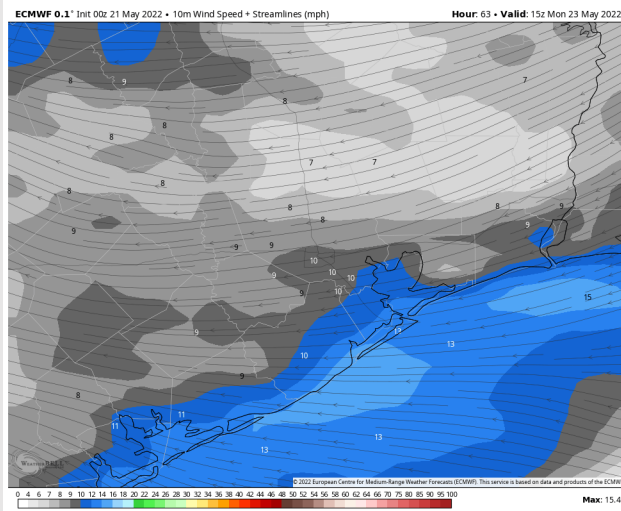
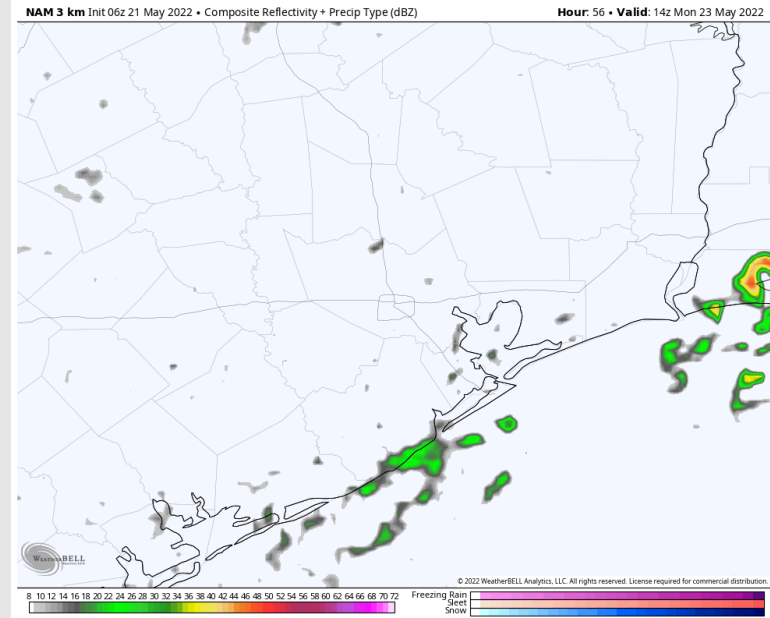
Precip: A few low end shower risks will be around for the morning hours ~20-30% with a ~20 % shot of an isolated shower in the afternoon. Not expecting a washout of a day.

Wind: Winds much of Monday will be coming out of the E (varying ENE and ESE at times) at 10-15 MPH sustained. By evening, winds turn more out of the Southeast.

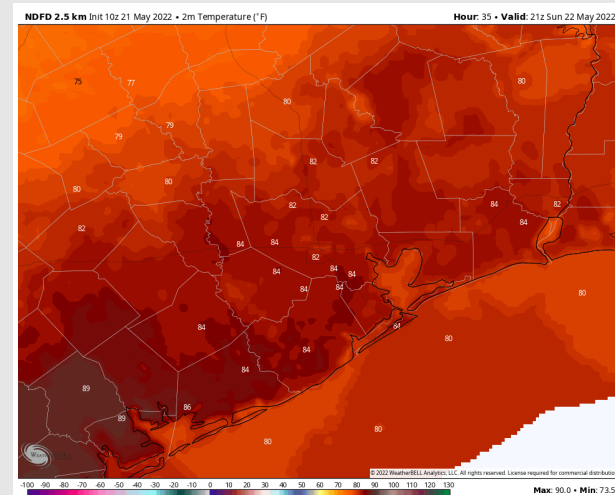
Temps: High temps will hang around the mid 80s Monday.

Visibility: No reduced visibility expected.

Precip Forecast: 10 AM CT



Wind Speed
10 AM CT

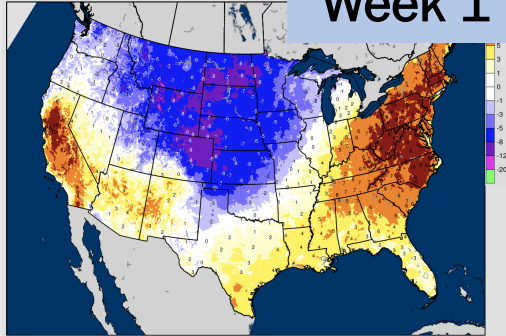


High Temps
Monday

Houston Pilots: 5/21/22

BAMcast Average Temperature Anomaly [°F]
7-DAY AVG for Thu 19MAY2022 thru Wed 25MAY2022 Days 1 to 7

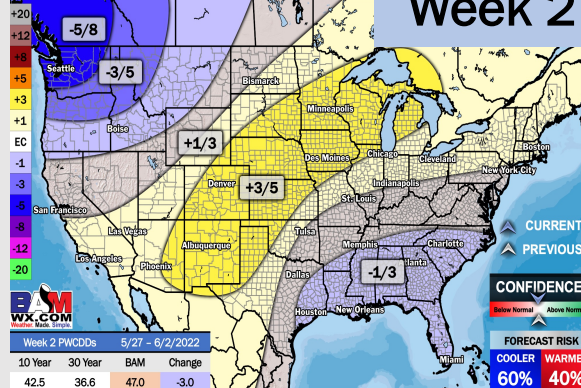
Week 1



BAM
WX.COM

UPDATED: 5/20/22 WEEK 2 TEMP D

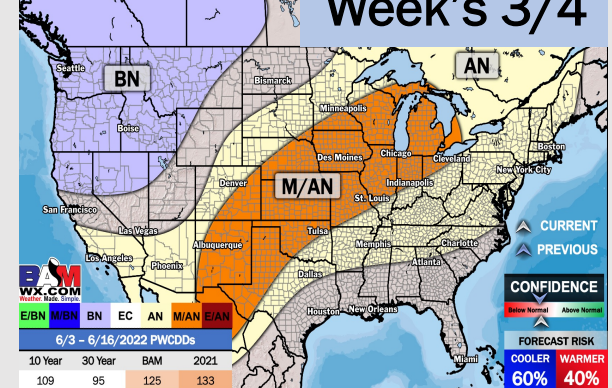
Week 2



BAM
WX.COM

UPDATED: 5/20/22 WEEK 3/4

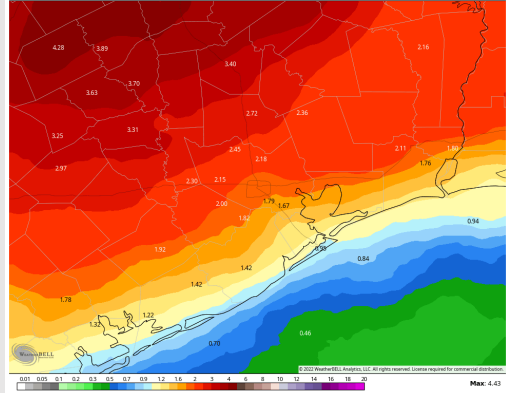
Week's 3/4



BAM
WX.COM

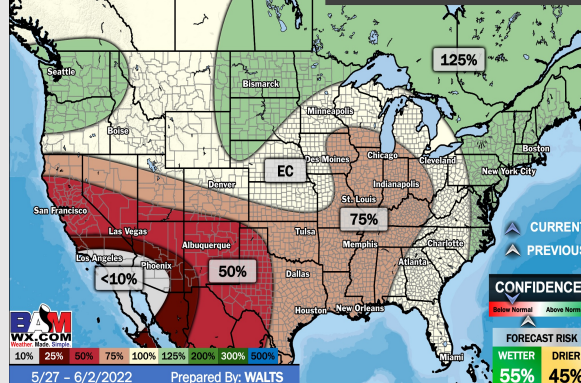
WPC 2.5 km (in: 18z 19 May 2022 • Total Precipitation (inches))

Hour: 168 • Valid: 18z Thu 26 May 2022



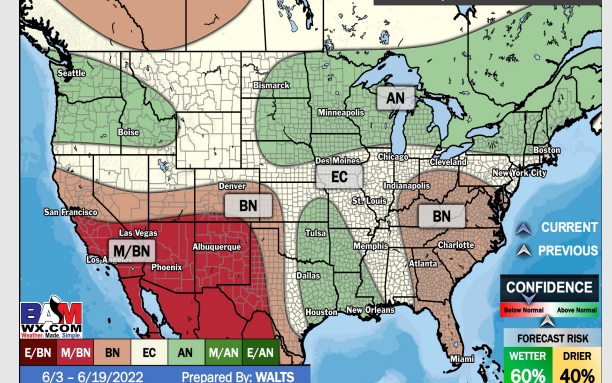
0.00 0.05 0.1 0.2 0.3 0.5 0.7 0.9 1.2 1.5 1.8 2.1 2.4 2.7 3.0 3.3 3.6 3.9 4.2
© 2022 Weather.com, Inc. All rights reserved. Licensed under the Creative Commons License. Map: 4-43

UPDATED: 5/20/22 WEEK 2 PRECIP PERCENT OF NORMAL



BAM
WX.COM

UPDATED: 5/20/22 WEEK 3/4 PRECIP DEPARTURE



BAM
WX.COM

- Watching Sat night/ Sunday for shots of rain, as well as daily chances Mon-Wed. Temps look to continue to be running above average.
- Week 2 likely features below normal temperatures with below average precip risks.
- The weeks ¾ timeframe looks to features near normal temperatures and above average precipitation risks.