

# Houston Pilots Forecast Package

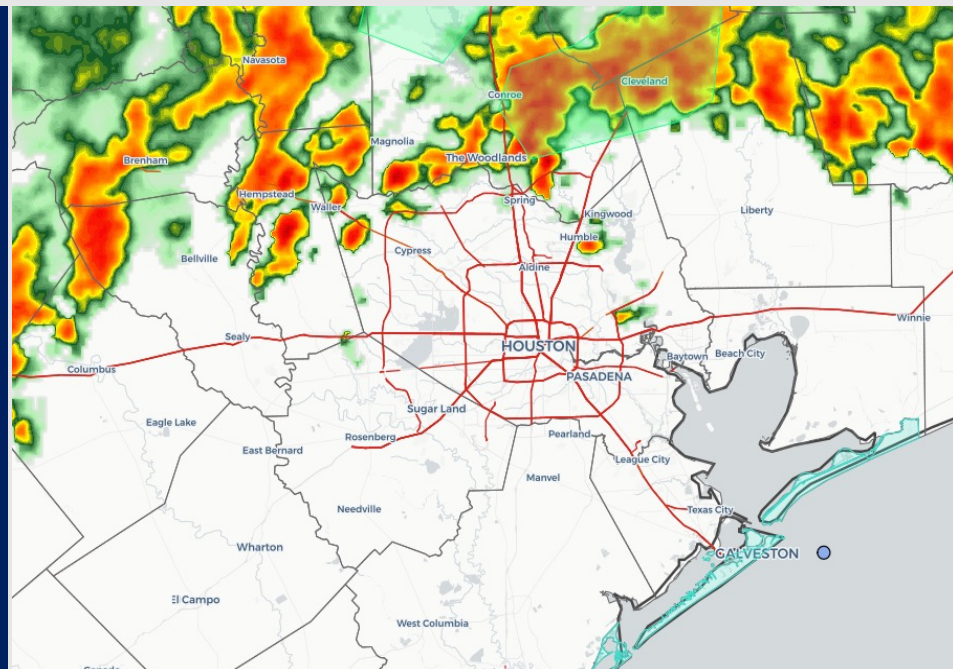


Updated: 1:00 PM CT  
Monday, April 25, 2022

Forecaster: Vince Bryan

## Weather Headlines

- The signal for fog continues to look weak for the next several days.
- Precip slides in this afternoon/evening from the NW today with the next front bringing scattered showers and thunderstorms.
- Friday is the next best shot at widespread gusty winds 25+ MPH possible.



**Radar/NWS Alerts: 1:00 PM CT**



As always, please do not hesitate to reach out to us with any forecast questions via the chat option on the Weather Porthole or our on-call number, **(317)-560-8122** press 1 for forecast questions.

# Houston Pilots Visibility Report



Time	04-25- 2022 Mon 12pm	04-25- 2022 Mon 1pm	04-25- 2022 Mon 2pm	04-25- 2022 Mon 3pm	04-25- 2022 Mon 4pm	04-25- 2022 Mon 5pm	04-25- 2022 Mon 6pm	04-25- 2022 Mon 7pm	04-25- 2022 Mon 8pm	04-25- 2022 Mon 9pm	04-25- 2022 Mon 10pm	04-25- 2022 Mon 11pm	04-26- 2022 Tue 12am	04-26- 2022 Tue 1am	04-26- 2022 Tue 2am	04-26- 2022 Tue 3am	04-26- 2022 Tue 4am	04-26- 2022 Tue 5am	04-26- 2022 Tue 6am	04-26- 2022 Tue 7am	04-26- 2022 Tue 8am	04-26- 2022 Tue 9am	04-26- 2022 Tue 10am	04-26- 2022 Tue 11am	04-26- 2022 Tue 12pm	04-26- 2022 Tue 1pm	04-26- 2022 Tue 2pm	04-26- 2022 Tue 3pm	04-26- 2022 Tue 4pm	04-26- 2022 Tue 5pm	04-26- 2022 Tue 6pm	04-26- 2022 Tue 7pm	04-26- 2022 Tue 8pm	04-26- 2022 Tue 9pm	04-26- 2022 Tue 10pm	04-26- 2022 Tue 11pm
Houston Pilots N - 610 Bridge	9.110	9.039	8.731	9.022	8.639	6.755	4.379	3.690	4.892	5.796	6.115	6.856	7.598	7.831	8.141	9.126	9.018	9.121	9.392	7.759	8.000	8.478	9.234	9.398	9.479	9.260	9.626	9.805	9.614	9.822	9.621	9.500	9.642	10.000	10.000	10.000
Houston Pilots M - Kinder 1	9.392	9.323	9.069	9.329	8.993	7.287	4.474	3.880	4.871	5.878	6.120	7.048	7.790	8.086	8.398	9.368	9.238	9.348	9.598	7.996	8.372	8.843	9.507	9.590	9.671	9.489	9.795	9.896	9.791	9.921	9.795	9.680	9.807	10.000	10.000	10.000
Houston Pilots L - Greens Bayou	9.886	9.831	9.653	9.840	9.540	7.950	4.638	4.131	4.815	5.751	6.082	7.252	8.114	8.482	8.777	9.748	9.500	9.682	9.900	8.387	8.881	9.410	9.916	9.903	10.000	9.904	10.000	10.000	10.000	10.000	10.000	10.000	10.000	10.000	10.000	
Houston Pilots K - Shell Crude	10.000	9.997	9.902	10.000	9.859	8.731	5.561	4.422	4.892	5.742	6.184	7.548	8.454	8.746	9.054	9.884	9.541	9.750	9.955	8.584	9.191	9.684	10.000	9.988	10.000	10.000	10.000	10.000	10.000	10.000	10.000	10.000	10.000	10.000	10.000	10.000
Houston Pilots J - Lynchburg Ferries	10.000	10.000	10.000	10.000	10.000	8.751	5.528	4.525	4.899	5.446	6.089	7.447	8.586	8.828	9.085	9.994	9.634	9.840	10.000	8.761	9.282	9.919	10.000	10.000	10.000	10.000	10.000	10.000	10.000	10.000	10.000	10.000	10.000	10.000	10.000	10.000
Houston Pilots I - Exxon 3	10.000	10.000	10.000	10.000	10.000	9.601	7.052	5.151	5.093	5.153	6.251	7.720	8.795	9.034	9.312	10.000	9.215	9.632	9.922	8.933	9.484	9.930	9.930	10.000	10.000	10.000	10.000	10.000	10.000	10.000	10.000	10.000	10.000	10.000	10.000	10.000
Houston Pilots H - Morgans Point	10.000	10.000	10.000	10.000	10.000	9.987	8.468	5.746	5.257	4.856	6.459	7.974	8.826	9.144	9.431	10.000	8.387	9.062	9.651	8.938	9.349	9.723	9.723	10.000	10.000	10.000	10.000	10.000	10.000	10.000	10.000	10.000	10.000	10.000	10.000	10.000
Houston Pilots G - 75/76	10.000	10.000	10.000	10.000	10.000	10.000	9.785	6.313	5.513	4.377	6.766	8.143	8.743	9.243	9.597	10.000	7.999	8.341	9.353	8.952	9.206	9.507	9.507	10.000	10.000	10.000	10.000	10.000	10.000	10.000	10.000	10.000	10.000	10.000	10.000	10.000
Houston Pilots F - 63/64	10.000	10.000	10.000	10.000	10.000	10.000	10.000	7.351	5.950	4.103	6.905	8.108	8.477	9.185	9.554	10.000	8.017	7.737	9.083	8.988	9.040	9.335	9.335	9.829	10.000	10.000	10.000	10.000	10.000	10.000	10.000	10.000	10.000	10.000	10.000	10.000
Houston Pilots E - 51/52	10.000	10.000	10.000	10.000	10.000	10.000	10.000	8.405	6.382	4.068	6.783	7.967	8.258	9.018	9.384	10.000	8.543	7.611	8.902	9.072	9.086	9.280	9.280	9.504	10.000	10.000	10.000	10.000	10.000	10.000	10.000	10.000	10.000	10.000	10.000	10.000
Houston Pilots D - 37/38	10.000	10.000	10.000	10.000	10.000	10.000	9.924	9.236	6.713	4.332	6.613	7.667	8.252	8.720	9.244	9.878	9.214	8.119	8.869	9.136	9.183	9.354	9.354	9.373	10.000	10.000	10.000	10.000	10.000	10.000	10.000	10.000	10.000	10.000	10.000	10.000
Houston Pilots C - 25/26	10.000	10.000	10.000	10.000	9.976	9.981	9.608	9.567	6.937	4.611	6.501	7.328	8.253	8.357	9.117	9.748	9.296	8.550	8.761	9.113	9.123	9.296	9.296	9.319	10.000	10.000	10.000	10.000	10.000	10.000	10.000	10.000	10.000	10.000	10.000	10.000
Houston Pilots B - 11/12	10.000	10.000	10.000	10.000	9.679	9.773	9.170	9.474	7.064	4.844	6.147	7.480	8.124	7.920	9.000	9.514	9.191	8.572	8.678	9.027	9.003	9.191	9.191	9.222	10.000	10.000	10.000	10.000	10.000	10.000	10.000	10.000	10.000	10.000	10.000	10.000
Houston Pilots A - 1 & 2 Bravo	10.000	10.000	10.000	10.000	8.813	9.284	8.274	8.628	7.342	5.881	5.554	8.034	7.887	7.190	8.999	8.903	9.029	8.636	8.758	8.988	8.964	9.029	9.029	9.072	10.000	10.000	10.000	10.000	10.000	10.000	10.000	10.000	10.000	10.000	10.000	10.000

Not anticipating fog today.

# Houston Pilots Wind Report



Time	04-25-2022 Mon 12pm	04-25-2022 Mon 1pm	04-25-2022 Mon 2pm	04-25-2022 Mon 3pm	04-25-2022 Mon 4pm	04-25-2022 Mon 5pm	04-25-2022 Mon 6pm	04-25-2022 Mon 7pm	04-25-2022 Mon 8pm	04-25-2022 Mon 9pm	04-25-2022 Mon 10pm	04-25-2022 Mon 11pm	04-26-2022 Tue 12am	04-26-2022 Tue 1am	04-26-2022 Tue 2am	04-26-2022 Tue 3am	04-26-2022 Tue 4am	04-26-2022 Tue 5am	04-26-2022 Tue 6am	04-26-2022 Tue 7am	04-26-2022 Tue 8am	04-26-2022 Tue 9am	04-26-2022 Tue 10am	04-26-2022 Tue 11am	04-26-2022 Tue 12pm	04-26-2022 Tue 1pm	04-26-2022 Tue 2pm	04-26-2022 Tue 3pm	04-26-2022 Tue 4pm	04-26-2022 Tue 5pm	04-26-2022 Tue 6pm	04-26-2022 Tue 7pm	04-26-2022 Tue 8pm	04-26-2022 Tue 9pm	04-26-2022 Tue 10pm	04-26-2022 Tue 11pm
Houston Pilots N - 610 Bridge	WS: 10 G:15 SSE	WS: 12 G:18 SSE	WS: 13 G:20 SSE	WS: 9 G:13 SSE	WS: 8 G:12 SSE	WS: 7 G:11 SSW	WS: 7 G:11 SSW	WS: 12 G:20 S	WS: 14 G:23 ENE	WS: 12 G:23 ENE	WS: 11 G:21 NE	WS: 12 G:26 ENE	WS: 10 G:23 ENE	WS: 5 G:17 ESE	WS: 2 G:14 ESE	WS: 6 G:11 NNE	WS: 7 G:11 NNE	WS: 8 G:12 NNE	WS: 8 G:14 NNE	WS: 9 G:15 NNE	WS: 10 G:16 NNE	WS: 10 G:16 NNE	WS: 11 G:17 NE	WS: 12 G:18 NE	WS: 12 G:17 NE	WS: 12 G:17 NE	WS: 11 G:17 NE	WS: 10 G:16 NE	WS: 9 G:15 NE	WS: 9 G:15 NE	WS: 9 G:13 NE	WS: 8 G:12 NE	WS: 7 G:11 NE	WS: 6 G:10 NE	WS: 6 G:11 NE	WS: 6 G:11 NE
Houston Pilots M - Kinder 1	WS: 10 G:14 SSE	WS: 12 G:18 SSE	WS: 13 G:20 SSE	WS: 10 G:13 SSE	WS: 9 G:13 SSE	WS: 7 G:12 SSE	WS: 7 G:12 SSE	WS: 12 G:20 SSE	WS: 14 G:27 ENE	WS: 12 G:23 ENE	WS: 10 G:21 NE	WS: 13 G:26 ENE	WS: 9 G:23 ENE	WS: 5 G:17 ESE	WS: 2 G:14 ESE	WS: 6 G:11 NNE	WS: 7 G:11 NNE	WS: 8 G:12 NNE	WS: 8 G:14 NNE	WS: 9 G:15 NNE	WS: 10 G:16 NNE	WS: 10 G:16 NNE	WS: 11 G:17 NE	WS: 12 G:18 NE	WS: 12 G:17 NE	WS: 12 G:17 NE	WS: 11 G:17 NE	WS: 10 G:16 NE	WS: 10 G:15 NE	WS: 10 G:15 NE	WS: 9 G:15 NE	WS: 9 G:13 NE	WS: 8 G:12 NE	WS: 7 G:11 NE	WS: 6 G:10 NE	WS: 6 G:11 NE
Houston Pilots L - Greens Bayou	WS: 10 G:14 SE	WS: 13 G:19 SSE	WS: 13 G:19 SSE	WS: 10 G:14 SE	WS: 10 G:14 SE	WS: 9 G:15 ESE	WS: 12 G:23 ENE	WS: 12 G:23 ENE	WS: 11 G:20 NE	WS: 10 G:20 NE	WS: 12 G:25 ENE	WS: 10 G:23 ENE	WS: 5 G:17 ESE	WS: 2 G:14 ESE	WS: 7 G:12 NNE	WS: 7 G:11 NNE	WS: 8 G:11 NNE	WS: 8 G:13 NNE	WS: 9 G:14 NNE	WS: 9 G:14 NNE	WS: 10 G:16 NNE	WS: 10 G:16 NNE	WS: 11 G:16 NE	WS: 12 G:17 NE	WS: 12 G:17 NE	WS: 12 G:17 NE	WS: 11 G:17 NE	WS: 11 G:16 NE	WS: 10 G:15 NE	WS: 10 G:15 NE	WS: 10 G:14 NE	WS: 10 G:13 NE	WS: 8 G:12 NE	WS: 7 G:11 NE	WS: 6 G:10 NE	WS: 6 G:11 NE
Houston Pilots K - Shell Crude	WS: 11 G:16 SE	WS: 13 G:19 SSE	WS: 13 G:19 SSE	WS: 12 G:16 SE	WS: 11 G:15 SE	WS: 10 G:15 SE	WS: 11 G:17 E	WS: 13 G:23 ENE	WS: 10 G:19 NE	WS: 10 G:20 NE	WS: 12 G:24 ENE	WS: 10 G:23 ENE	WS: 6 G:19 ESE	WS: 2 G:14 ESE	WS: 7 G:12 N	WS: 7 G:11 NNE	WS: 8 G:11 NNE	WS: 9 G:13 NNE	WS: 9 G:14 NNE	WS: 11 G:16 NNE	WS: 11 G:16 NNE	WS: 12 G:17 NE	WS: 12 G:17 NE	WS: 12 G:17 NE	WS: 12 G:17 NE	WS: 12 G:17 NE	WS: 11 G:16 NE	WS: 11 G:15 NE	WS: 11 G:15 NE	WS: 10 G:14 NE	WS: 10 G:13 NE	WS: 9 G:12 NE	WS: 7 G:11 NE	WS: 6 G:10 NE	WS: 6 G:11 NE	
Houston Pilots J - Lynchburg Ferries	WS: 11 G:18 SE	WS: 14 G:21 SSE	WS: 14 G:19 SSE	WS: 12 G:17 SE	WS: 12 G:16 SE	WS: 10 G:15 SE	WS: 10 G:16 E	WS: 11 G:21 ENE	WS: 8 G:16 NE	WS: 10 G:19 NE	WS: 12 G:23 ENE	WS: 10 G:23 ENE	WS: 6 G:19 ESE	WS: 7 G:13 NE	WS: 7 G:13 N	WS: 7 G:11 NNE	WS: 8 G:11 NNE	WS: 9 G:13 NNE	WS: 9 G:14 NNE	WS: 11 G:16 NNE	WS: 11 G:16 NNE	WS: 12 G:17 NE	WS: 12 G:17 NE	WS: 12 G:17 NE	WS: 12 G:17 NE	WS: 12 G:16 NE	WS: 11 G:16 NE	WS: 11 G:15 NE	WS: 10 G:14 NE	WS: 10 G:13 NE	WS: 9 G:12 NE	WS: 9 G:11 NE	WS: 7 G:10 NE	WS: 7 G:11 NE		
Houston Pilots I - Exxon 3	WS: 13 G:20 SSE	WS: 14 G:22 SSE	WS: 15 G:21 SSE	WS: 14 G:19 SSE	WS: 12 G:16 SE	WS: 10 G:14 SE	WS: 8 G:13 E	WS: 10 G:19 ESE	WS: 6 G:15 NE	WS: 12 G:21 NE	WS: 12 G:23 NE	WS: 11 G:24 NE	WS: 7 G:21 ESE	WS: 3 G:14 SSE	WS: 7 G:13 N	WS: 7 G:11 NNE	WS: 8 G:12 NNE	WS: 9 G:14 NNE	WS: 10 G:15 NNE	WS: 11 G:17 NNE	WS: 11 G:17 NNE	WS: 13 G:18 NNE	WS: 13 G:18 NE	WS: 13 G:17 NE	WS: 13 G:17 NE	WS: 12 G:16 NE	WS: 12 G:16 NE	WS: 11 G:15 NE	WS: 11 G:15 NE	WS: 10 G:14 NE	WS: 10 G:13 NE	WS: 9 G:12 NE	WS: 8 G:11 NE	WS: 7 G:11 NE	WS: 7 G:12 NE	
Houston Pilots H - Morgans Point	WS: 16 G:21 SSE	WS: 15 G:22 SSE	WS: 16 G:22 SSE	WS: 16 G:21 SE	WS: 14 G:18 SE	WS: 11 G:14 SE	WS: 9 G:12 ESE	WS: 13 G:21 ENE	WS: 10 G:16 S	WS: 15 G:22 NE	WS: 15 G:24 NE	WS: 14 G:26 NE	WS: 12 G:22 E	WS: 8 G:16 ESE	WS: 8 G:13 NNE	WS: 9 G:12 NNE	WS: 9 G:14 NNE	WS: 10 G:16 NNE	WS: 11 G:17 NNE	WS: 12 G:18 NNE	WS: 12 G:18 NE	WS: 14 G:19 NE	WS: 14 G:19 NE	WS: 13 G:18 NE	WS: 13 G:18 NE	WS: 12 G:17 NE	WS: 12 G:16 NE	WS: 11 G:15 NE	WS: 11 G:14 NE	WS: 10 G:13 NE	WS: 10 G:13 NE	WS: 9 G:12 NE	WS: 8 G:12 NE	WS: 8 G:13 NE	WS: 9 G:14 NE	
Houston Pilots G - 75/76	WS: 18 G:21 SSE	WS: 18 G:21 SE	WS: 18 G:21 SE	WS: 19 G:22 SE	WS: 17 G:19 SE	WS: 13 G:15 SE	WS: 13 G:12 ESE	WS: 22 G:26 NE	WS: 21 G:25 SSW	WS: 20 G:24 NE	WS: 23 G:27 NE	WS: 22 G:28 NE	WS: 19 G:24 E	WS: 14 G:19 ESE	WS: 11 G:13 NE	WS: 11 G:14 NE	WS: 12 G:16 NE	WS: 13 G:17 NE	WS: 13 G:17 NE	WS: 14 G:20 NE	WS: 15 G:21 NE	WS: 15 G:21 NE	WS: 16 G:21 NE	WS: 16 G:21 NE	WS: 16 G:20 NE	WS: 15 G:19 NE	WS: 15 G:18 NE	WS: 12 G:16 NE	WS: 12 G:16 NE	WS: 11 G:15 NE	WS: 11 G:14 NE	WS: 10 G:14 NE	WS: 10 G:14 NE	WS: 10 G:14 NE	WS: 11 G:15 NE	WS: 12 G:16 NE
Houston Pilots F - 63/64	WS: 19 G:23 SSE	WS: 18 G:20 SSE	WS: 17 G:21 SSE	WS: 18 G:20 SSE	WS: 17 G:19 SE	WS: 13 G:15 SE	WS: 13 G:12 ESE	WS: 25 G:28 NE	WS: 25 G:29 S	WS: 23 G:25 NE	WS: 27 G:30 NE	WS: 24 G:28 NE	WS: 21 G:26 E	WS: 15 G:20 ENE	WS: 12 G:14 ENE	WS: 12 G:15 NE	WS: 13 G:16 NE	WS: 14 G:18 NE	WS: 15 G:19 NE	WS: 16 G:21 NE	WS: 16 G:21 NE	WS: 17 G:21 NE	WS: 17 G:21 NE	WS: 16 G:20 NE	WS: 15 G:19 NE	WS: 15 G:18 NE	WS: 13 G:17 NE	WS: 13 G:17 NE	WS: 12 G:16 NE	WS: 12 G:15 NE	WS: 12 G:14 NE	WS: 11 G:14 NE	WS: 11 G:14 NE	WS: 12 G:15 NE	WS: 12 G:15 NE	
Houston Pilots E - 51/52	WS: 18 G:22 SSE	WS: 17 G:20 SSE	WS: 17 G:20 SSE	WS: 17 G:19 SE	WS: 16 G:18 SE	WS: 13 G:15 SE	WS: 11 G:11 ESE	WS: 20 G:22 NE	WS: 23 G:27 ENE	WS: 21 G:24 NE	WS: 27 G:32 ENE	WS: 23 G:28 ENE	WS: 21 G:26 E	WS: 15 G:21 ESE	WS: 13 G:17 E	WS: 13 G:15 NE	WS: 14 G:16 NE	WS: 14 G:17 NE	WS: 15 G:18 NE	WS: 16 G:20 NE	WS: 16 G:21 NE	WS: 17 G:21 NE	WS: 17 G:21 NE	WS: 16 G:20 NE	WS: 16 G:19 NE	WS: 15 G:18 NE	WS: 13 G:17 NE	WS: 13 G:17 NE	WS: 13 G:16 NE	WS: 12 G:15 NE	WS: 12 G:14 NE	WS: 11 G:14 NE	WS: 11 G:14 NE	WS: 12 G:15 NE	WS: 12 G:15 NE	
Houston Pilots D - 37/38	WS: 18 G:22 SSE	WS: 17 G:20 SE	WS: 18 G:21 SE	WS: 16 G:18 SE	WS: 15 G:18 SE	WS: 13 G:15 SE	WS: 11 G:11 ESE	WS: 12 G:14 ENE	WS: 22 G:25 NE	WS: 19 G:23 NE	WS: 28 G:33 NE	WS: 22 G:28 ENE	WS: 21 G:27 ENE	WS: 15 G:23 E	WS: 14 G:20 ESE	WS: 13 G:15 NE	WS: 14 G:16 NE	WS: 14 G:17 NE	WS: 15 G:18 NE	WS: 16 G:21 NE	WS: 17 G:21 NE	WS: 17 G:21 NE	WS: 18 G:21 NE	WS: 18 G:20 NE	WS: 16 G:19 NE	WS: 15 G:18 NE	WS: 14 G:17 NE	WS: 13 G:16 NE	WS: 13 G:15 NE	WS: 12 G:14 NE	WS: 12 G:14 NE	WS: 12 G:14 NE	WS: 12 G:14 NE	WS: 12 G:15 NE	WS: 13 G:17 NE	
Houston Pilots C - 25/26	WS: 16 G:19 SE	WS: 15 G:19 SE	WS: 17 G:20 SE	WS: 15 G:18 SE	WS: 14 G:17 SE	WS: 12 G:15 SE	WS: 10 G:12 ESE	WS: 11 G:12 E	WS: 13 G:23 NE	WS: 20 G:25 NE	WS: 25 G:33 NE	WS: 23 G:28 ENE	WS: 20 G:27 ENE	WS: 15 G:23 E	WS: 14 G:21 ESE	WS: 12 G:15 NE	WS: 13 G:16 NE	WS: 14 G:17 NE	WS: 15 G:19 NE	WS: 16 G:20 NE	WS: 17 G:21 NE	WS: 17 G:21 NE	WS: 18 G:21 NE	WS: 18 G:20 NE	WS: 16 G:19 NE	WS: 15 G:18 NE	WS: 14 G:17 NE	WS: 13 G:16 NE	WS: 13 G:15 NE	WS: 12 G:14 ENE	WS: 12 G:14 ENE	WS: 12 G:14 ENE	WS: 12 G:14 ENE	WS: 12 G:15 NE	WS: 13 G:17 NE	
Houston Pilots B - 11/12	WS: 14 G:17 SE	WS: 15 G:19 SE	WS: 17 G:20 SE	WS: 14 G:18 SE	WS: 15 G:18 SE	WS: 13 G:15 SE	WS: 11 G:12 ESE	WS: 11 G:12 E	WS: 18 G:22 NE	WS: 19 G:25 SW	WS: 25 G:34 NE	WS: 19 G:28 ENE	WS: 20 G:29 ENE	WS: 17 G:24 E	WS: 16 G:23 ESE	WS: 13 G:15 ENE	WS: 13 G:16 NE	WS: 14 G:17 NE	WS: 15 G:19 NE	WS: 16 G:20 NE	WS: 17 G:21 NE	WS: 18 G:21 NE	WS: 18 G:21 NE	WS: 18 G:20 NE	WS: 17 G:19 NE	WS: 16 G:18 NE	WS: 14 G:17 NE	WS: 13 G:16 NE	WS: 13 G:15 ENE	WS: 12 G:14 ENE	WS: 12 G:14 ENE	WS: 12 G:14 ENE	WS: 12 G:14 ENE	WS: 12 G:15 NE	WS: 13 G:17 NE	
Houston Pilots A - 1 & 2 Bravo	WS: 14 G:16 ESE	WS: 13 G:17 SE	WS: 14 G:18 SE	WS: 15 G:18 SE	WS: 15 G:19 SE	WS: 14 G:16 SE	WS: 11 G:14 ESE	WS: 10 G:11 ENE	WS: 16 G:18 NNE	WS: 21 G:25 NNE	WS: 31 G:37 NE	WS: 22 G:26 ENE	WS: 24 G:29 ENE	WS: 21 G:27 ENE	WS: 20 G:26 ESE	WS: 14 G:17 ENE	WS: 15 G:16 NE	WS: 16 G:18 NE	WS: 17 G:19 NE	WS: 18 G:21 NE	WS: 18 G:21 NE	WS: 19 G:22 NE	WS: 19 G:22 NE	WS: 19 G:21 NE	WS: 18 G:21 NE	WS: 17 G:19 NE	WS: 16 G:18 ENE	WS: 15 G:17 ENE	WS: 14 G:16 ENE	WS: 14 G:16 ENE	WS: 13 G:15 ENE	WS: 13 G:16 ENE	WS: 13 G:16 NE	WS: 14 G:17 NE	WS: 15 G:18 NE	

See slides below for official thoughts on winds.

# Houston Pilots Extended Range Visibility Report



## Thursday, 4/28/22

Currently not anticipating fog on Thu with drier air settling in.

### Confidence

Above  
Normal

Below  
Normal

## Saturday, 4/30/22

Not in favor of fog for Saturday.

### Confidence

Above  
Normal

Below  
Normal

## Friday, 4/29/22

Stronger winds likely keep the fog threat at bay. Sea fog threats are becoming increasingly difficult as Gulf shelf waters are warming.

### Confidence

Above  
Normal

Below  
Normal

### Daily Fog Chance

Thursday AM

Unlikely

Friday AM

Unlikely

Saturday AM

Unlikely



# Houston Pilots: Mon. 4/25/2022

## Forecast Discussion

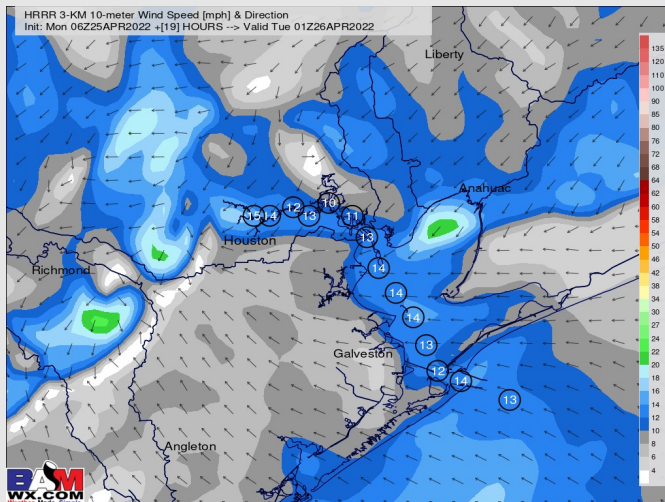
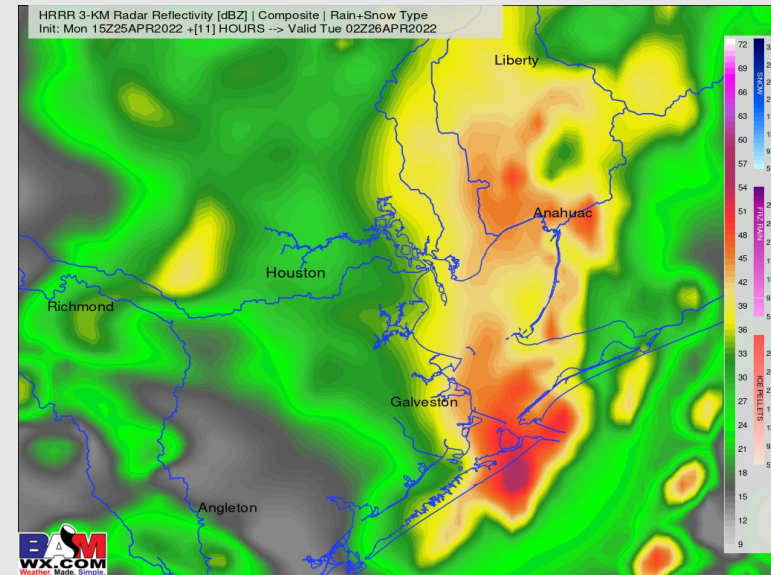
**Precip:** A couple very isolated pockets of showers will be possible early this afternoon, however chances remain on the lower side (20-30%). The better threat for precip comes late evening as a front works through. The best chances for a few stronger thunderstorms come N of Morgan's Point before things likely gradually weaken, however a few thunderstorms near the boarding station cannot be ruled out. Main window for this would be 4 PM (starting for far N stations) to 11 PM (ending S stations). Stronger wind gusts would be the biggest threat.

**Wind:** Winds will continue out of the SE at 8-13 MPH with gusts to 15 MPH out through sundown. Once the front works into the area, winds from the NE will be 10-15 MPH with gusts 15-20 MPH. Under any stronger thunderstorms/ pockets of heavier precip around the area this evening, gusts of 30-40 MPH can not be ruled out, but this would be a localized threat.

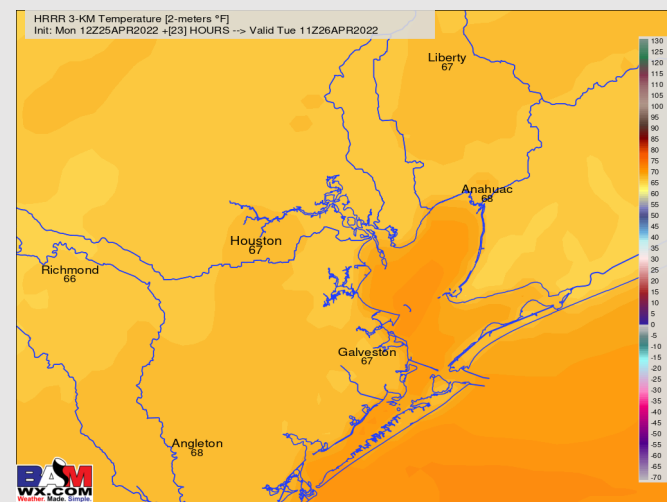
**Temps:** Lows fall back into the upper 60s F.

**Visibility:** No fog expected today, but reduced visibility will be possible in precipitation.

## Precip Forecast: 9PM CT



Wind Speed  
8 PM CT



Low Temps  
this Evening

# Houston Pilots: Tue. 4/26/2022

## Forecast Discussion

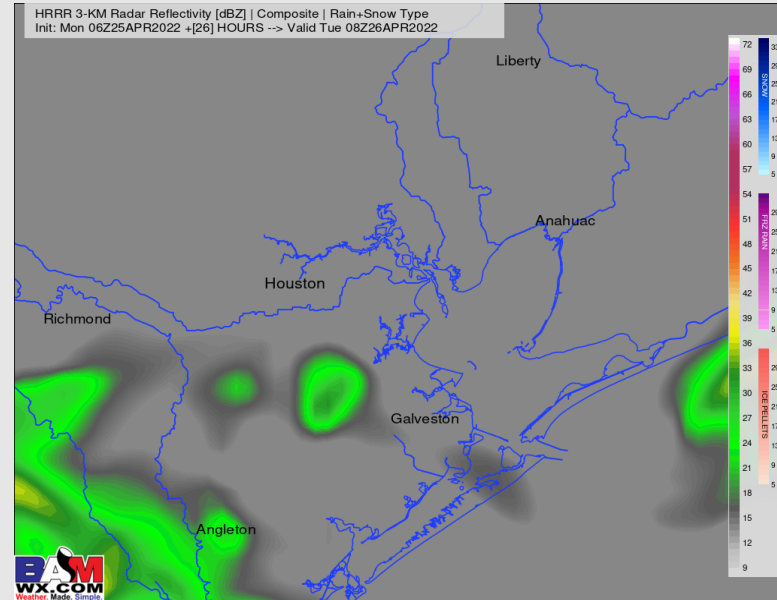
**Precip:** A few scattered leftover showers will be possible early morning, however the deeper into the day we go, the minor chances should diminish and drier conditions should ensue.

**Wind:** Winds Tuesday may be elevated a bit out of the NE around 10 – 15 MPH before calming a bit into the afternoon with gusts 15 – 20 MPH not off the table.

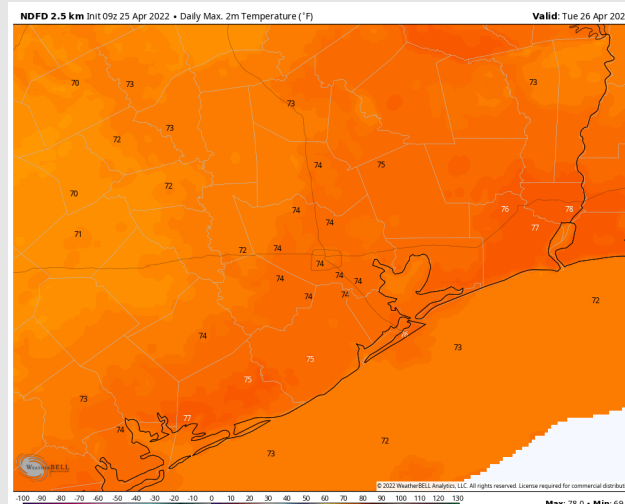
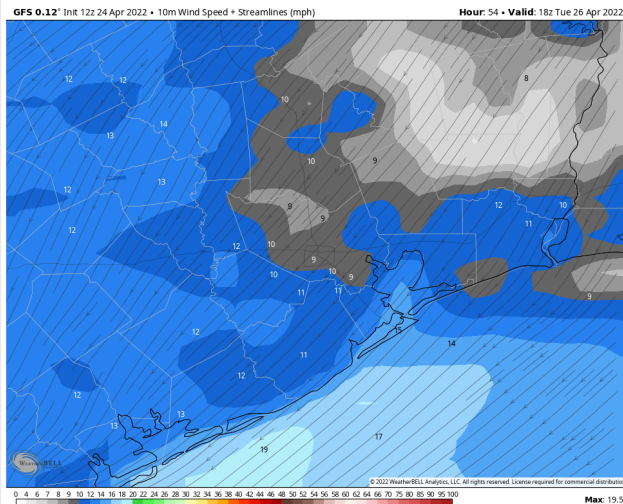
**Temps:** Highs Tuesday reach the low to mid 70s F.

**Visibility:** Not anticipating fog on Tuesday.

## Precip Forecast: 4 AM CT



**Wind Speed:**  
1 PM CT

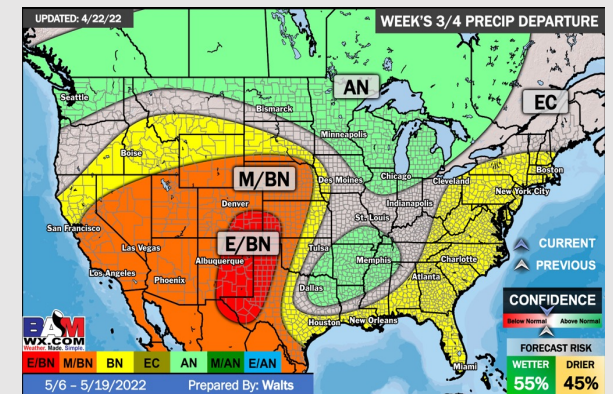
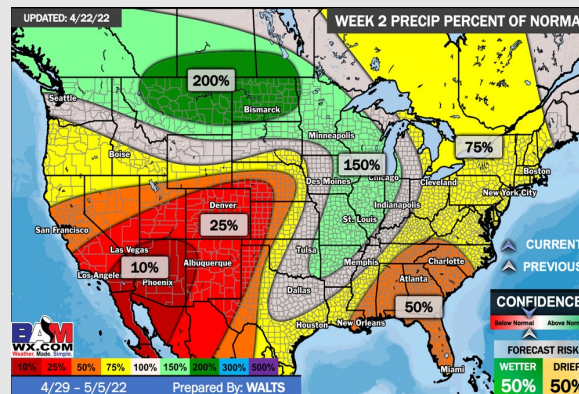
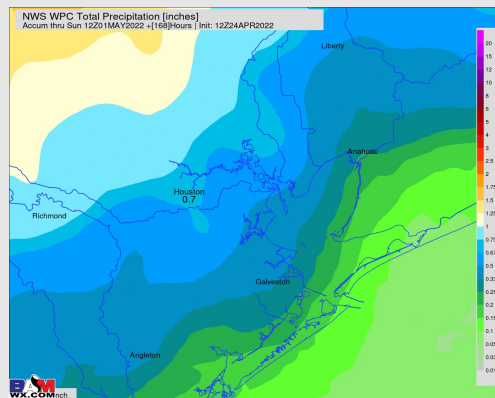
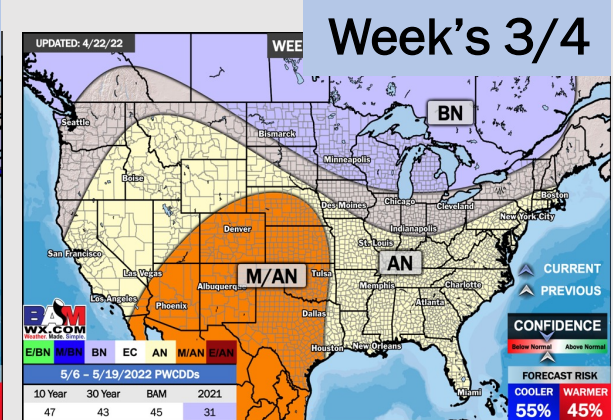
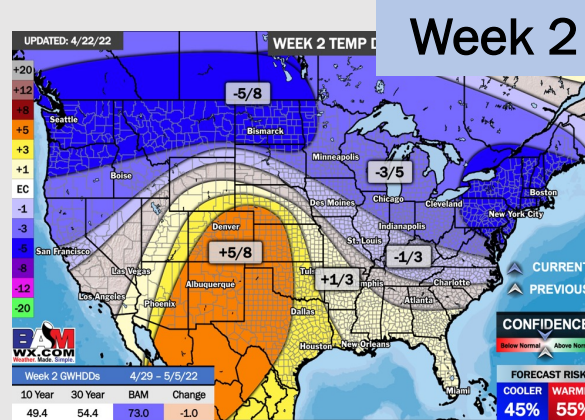
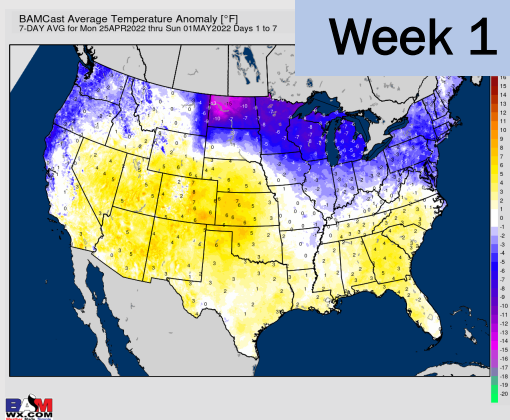


**Highs**  
**Tuesday**





# Houston Pilots: 4/25/22



- Isolated chances will be possible starting Friday, however things look rather light and sporadic. Overall temperatures expected to be warmer vs normal.
- The better track for storm systems looks to be to the north of Houston. Will likely be some chance of moisture but expecting below normal amounts. Temperatures to continue to run above normal.
- Continue to anticipate the best storm threat to stay north of the HOU area. This will keep temperatures up and moisture risks at below normal.