

# Houston Pilots Forecast Package



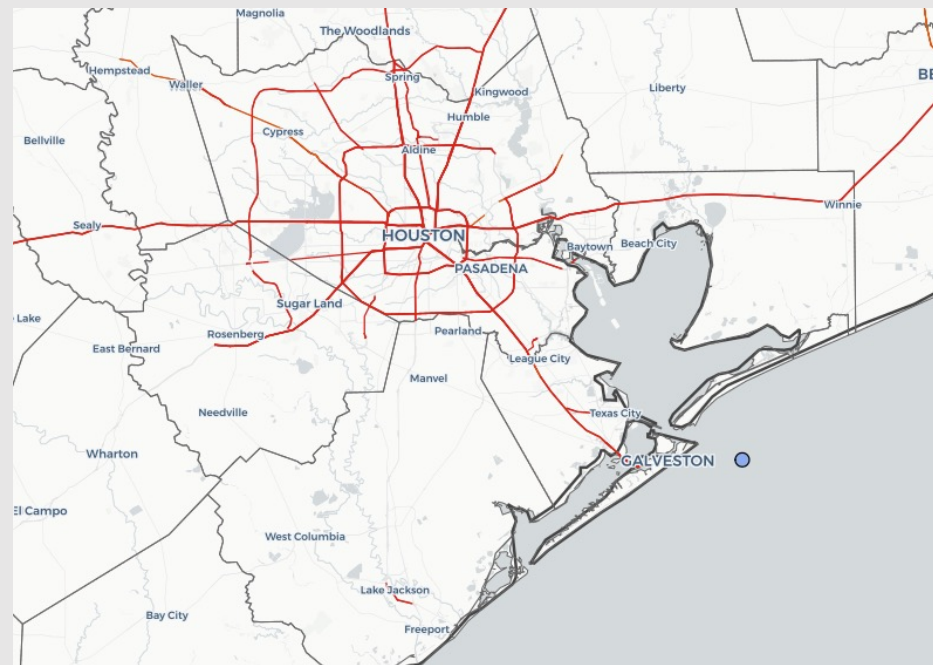
Updated: 1:00 PM CT

Thursday, March 17, 2022

Forecaster: Vince Bryan

## Weather Headlines

- Precip chances later this evening out ahead of the next cold front. Winds slowly start to increase this afternoon out ahead of the front with elevated winds likely continuing into Fri.
- After a generally quieter weekend, the following front will bring rain showers starting Monday PM with the next front working in Tuesday PM. **Expect gusty winds Monday because of this.**
- Fog signal behind the front Friday AM looks rather limited.

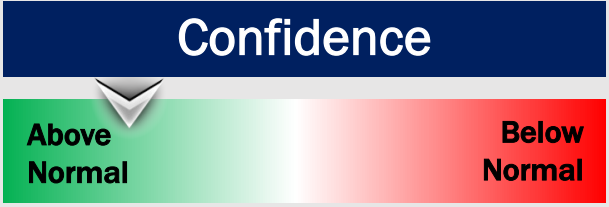


**Radar/ NWS Alerts: 1:00 PM CT**



As always, please do not hesitate to reach out to us with any forecast questions via the chat option on the Weather Porthole or our on-call number, **(317)-560-8122** press 1 for forecast questions.

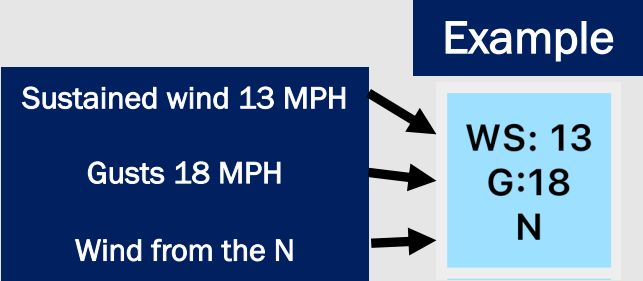
# Houston Pilots Visibility Report



Time	03-17- 2022 Thu 11am	03-17- 2022 Thu 12pm	03-17- 2022 Thu 1pm	03-17- 2022 Thu 2pm	03-17- 2022 Thu 3pm	03-17- 2022 Thu 4pm	03-17- 2022 Thu 5pm	03-17- 2022 Thu 6pm	03-17- 2022 Thu 7pm	03-17- 2022 Thu 8pm	03-17- 2022 Thu 9pm	03-17- 2022 Thu 10pm	03-17- 2022 Thu 11pm	03-18- 2022 Fri 12am	03-18- 2022 Fri 1am	03-18- 2022 Fri 2am	03-18- 2022 Fri 3am	03-18- 2022 Fri 4am	03-18- 2022 Fri 5am	03-18- 2022 Fri 6am	03-18- 2022 Fri 7am	03-18- 2022 Fri 8am	03-18- 2022 Fri 9am	03-18- 2022 Fri 10am	03-18- 2022 Fri 11am	03-18- 2022 Fri 12pm	03-18- 2022 Fri 1pm	03-18- 2022 Fri 2pm	03-18- 2022 Fri 3pm	03-18- 2022 Fri 4pm	03-18- 2022 Fri 5pm	03-18- 2022 Fri 6pm	03-18- 2022 Fri 7pm	03-18- 2022 Fri 8pm	03-18- 2022 Fri 9pm	03-18- 2022 Fri 10pm		
Houston Pilots N - 610 Bridge	10.000	10.000	10.000	10.000	10.000	10.000	10.000	7.331	5.936	6.915	5.981	6.915	6.915	6.935	9.644	7.924	7.902	7.648	10.000	10.000	10.000	10.000	10.000	10.000	10.000	10.000	10.000	10.000	10.000	10.000	10.000	10.000	10.000	10.000	10.000	10.000	10.000	
Houston Pilots M - Kinder 1	10.000	10.000	10.000	10.000	10.000	10.000	10.000	9.309	5.936	6.919	5.981	6.919	6.919	6.935	9.038	7.924	7.645	7.645	10.000	10.000	10.000	10.000	10.000	10.000	10.000	10.000	10.000	10.000	10.000	10.000	10.000	10.000	10.000	10.000	10.000	10.000	10.000	
Houston Pilots L - Greens Bayou	10.000	10.000	10.000	10.000	10.000	10.000	10.000	10.000	6.614	6.915	5.969	6.915	6.915	6.923	9.773	7.924	7.685	7.655	10.000	10.000	10.000	10.000	10.000	10.000	10.000	10.000	10.000	10.000	10.000	10.000	10.000	10.000	10.000	10.000	10.000	10.000	10.000	
Houston Pilots K - Shell Crude	10.000	10.000	10.000	10.000	10.000	10.000	10.000	10.000	5.936	6.919	5.965	6.919	6.919	6.919	9.038	7.015	7.811	8.033	10.000	10.000	10.000	10.000	10.000	10.000	10.000	10.000	10.000	10.000	10.000	10.000	10.000	10.000	10.000	10.000	10.000	10.000	10.000	
Houston Pilots J - Lynchburg Ferries	10.000	10.000	10.000	10.000	10.000	10.000	10.000	10.000	6.890	6.890	5.936	6.890	6.890	6.929	9.038	7.116	7.811	8.033	10.000	10.000	10.000	10.000	10.000	10.000	10.000	10.000	10.000	10.000	10.000	10.000	10.000	10.000	10.000	10.000	10.000	10.000	10.000	10.000
Houston Pilots I - Exxon 3	10.000	10.000	10.000	10.000	10.000	10.000	10.000	10.000	6.890	6.890	5.936	6.890	6.890	6.929	9.038	6.929	7.811	8.033	9.382	10.000	10.000	10.000	10.000	10.000	10.000	10.000	10.000	10.000	10.000	10.000	10.000	10.000	10.000	10.000	10.000	10.000	10.000	10.000
Houston Pilots H - Morgans Point	10.000	10.000	10.000	10.000	10.000	10.000	10.000	10.000	6.426	6.890	6.384	6.890	6.890	6.929	9.038	6.929	7.811	8.033	8.864	10.000	10.000	10.000	10.000	10.000	10.000	10.000	10.000	10.000	10.000	10.000	10.000	10.000	10.000	10.000	10.000	10.000	10.000	10.000
Houston Pilots G - 75/76	10.000	10.000	10.000	10.000	10.000	10.000	10.000	10.000	5.936	6.890	6.890	6.890	6.890	6.929	9.038	6.929	7.811	8.033	8.033	10.000	10.000	10.000	10.000	10.000	10.000	10.000	10.000	10.000	10.000	10.000	10.000	10.000	10.000	10.000	10.000	10.000	10.000	10.000
Houston Pilots F - 63/64	10.000	10.000	10.000	10.000	10.000	10.000	10.000	10.000	5.936	6.890	6.890	6.890	6.890	6.929	9.038	6.929	7.811	8.033	8.033	10.000	10.000	10.000	10.000	10.000	10.000	10.000	10.000	10.000	10.000	10.000	10.000	10.000	10.000	10.000	10.000	10.000	10.000	10.000
Houston Pilots E - 51/52	10.000	10.000	10.000	10.000	10.000	10.000	10.000	10.000	4.902	6.890	6.890	6.890	6.890	6.890	9.038	6.890	7.811	8.033	8.033	9.790	10.000	10.000	10.000	10.000	10.000	10.000	10.000	10.000	10.000	10.000	10.000	10.000	10.000	10.000	10.000	10.000	10.000	10.000
Houston Pilots D - 37/38	10.000	10.000	10.000	10.000	10.000	10.000	10.000	10.000	5.936	6.890	6.890	6.685	6.890	6.890	9.038	6.890	6.340	7.461	7.989	8.988	10.000	10.000	10.000	10.000	10.000	10.000	10.000	10.000	10.000	10.000	10.000	10.000	10.000	10.000	10.000	10.000	10.000	10.000
Houston Pilots C - 25/26	10.000	10.000	10.000	10.000	10.000	10.000	10.000	9.038	6.890	6.809	6.890	5.936	6.890	6.890	7.924	6.809	5.946	5.963	8.033	8.033	10.000	10.000	10.000	10.000	10.000	10.000	10.000	10.000	10.000	10.000	10.000	10.000	10.000	10.000	10.000	10.000	10.000	10.000
Houston Pilots B - 11/12	10.000	10.000	10.000	10.000	10.000	10.000	10.000	9.038	6.890	5.936	6.890	4.902	6.890	6.890	7.924	5.983	5.886	5.886	7.644	8.033	10.000	8.988	10.000	10.000	10.000	10.000	10.000	10.000	10.000	10.000	10.000	10.000	10.000	10.000	10.000	10.000	10.000	10.000
Houston Pilots A - 1 & 2 Bravo	10.000	10.000	10.000	10.000	10.000	10.000	10.000	9.038	6.890	6.890	6.890	5.936	5.936	5.936	6.890	5.936	8.033	8.033	6.999	8.033	8.033	8.033	10.000	10.000	10.000	10.000	10.000	10.000	10.000	10.000	10.000	10.000	10.000	10.000	10.000	10.000	10.000	10.000

Data is likely picking up on rain threat coming in later this evening. More details below.

# Houston Pilots Wind Report



Time	03-17-2022 Thu 11am	03-17-2022 Thu 12pm	03-17-2022 Thu 1pm	03-17-2022 Thu 2pm	03-17-2022 Thu 3pm	03-17-2022 Thu 4pm	03-17-2022 Thu 5pm	03-17-2022 Thu 6pm	03-17-2022 Thu 7pm	03-17-2022 Thu 8pm	03-17-2022 Thu 9pm	03-17-2022 Thu 10pm	03-17-2022 Thu 11pm	03-18-2022 Fri 12am	03-18-2022 Fri 1am	03-18-2022 Fri 2am	03-18-2022 Fri 3am	03-18-2022 Fri 4am	03-18-2022 Fri 5am	03-18-2022 Fri 6am	03-18-2022 Fri 7am	03-18-2022 Fri 8am	03-18-2022 Fri 9am	03-18-2022 Fri 10am	03-18-2022 Fri 11am	03-18-2022 Fri 12pm	03-18-2022 Fri 1pm	03-18-2022 Fri 2pm	03-18-2022 Fri 3pm	03-18-2022 Fri 4pm	03-18-2022 Fri 5pm	03-18-2022 Fri 6pm	03-18-2022 Fri 7pm	03-18-2022 Fri 8pm	03-18-2022 Fri 9pm	03-18-2022 Fri 10pm	
Houston Pilots N - 610 Bridge	WS: 12 G:27 SE	WS: 11 G:27 SE	WS: 10 G:28 SE	WS: 12 G:29 SE	WS: 13 G:27 SE	WS: 13 G:30 SE	WS: 13 G:33 SE	WS: 14 G:35 SE	WS: 14 G:36 SE	WS: 13 G:36 SE	WS: 14 G:38 SE	WS: 13 G:40 SSE	WS: 12 G:38 SSE	WS: 14 G:37 S	WS: 12 G:33 SSW	WS: 13 G:32 SSW	WS: 11 G:27 SW	WS: 10 G:26 WSW	WS: 10 G:25 WSW	WS: 12 G:23 W	WS: 12 G:22 WNW	WS: 13 G:26 NW	WS: 15 G:28 NW	WS: 15 G:21 NW	WS: 15 G:19 NW	WS: 14 G:19 NW	WS: 14 G:18 WNW	WS: 15 G:19 WNW	WS: 16 G:19 NW	WS: 15 G:20 NW	WS: 15 G:22 NW	WS: 14 G:23 G:20 NW	WS: 12 G:20 NW	WS: 9 G:19 NNW	WS: 7 G:20 NNW	WS: 5 G:21 NNW	
Houston Pilots M - Kinder 1	WS: 12 G:27 SE	WS: 11 G:28 SE	WS: 10 G:28 SE	WS: 12 G:28 SE	WS: 13 G:27 SE	WS: 13 G:30 SE	WS: 13 G:33 SE	WS: 14 G:35 SE	WS: 14 G:36 SE	WS: 13 G:36 SE	WS: 13 G:38 SE	WS: 14 G:40 SSE	WS: 12 G:39 SSE	WS: 14 G:37 S	WS: 12 G:32 SSW	WS: 13 G:32 SSW	WS: 12 G:28 SW	WS: 10 G:27 WSW	WS: 10 G:26 WSW	WS: 12 G:23 W	WS: 12 G:22 WNW	WS: 13 G:25 NW	WS: 15 G:27 NW	WS: 15 G:21 NW	WS: 15 G:19 NW	WS: 14 G:19 NW	WS: 14 G:18 WNW	WS: 15 G:19 WNW	WS: 16 G:19 NW	WS: 15 G:20 NW	WS: 15 G:22 NW	WS: 14 G:22 G:20 NW	WS: 12 G:20 NW	WS: 9 G:19 NNW	WS: 7 G:20 NNW	WS: 5 G:21 NNW	
Houston Pilots L - Greens Bayou	WS: 13 G:28 SE	WS: 12 G:28 SE	WS: 11 G:28 SE	WS: 12 G:26 SE	WS: 13 G:27 SE	WS: 13 G:29 SE	WS: 13 G:33 SE	WS: 15 G:35 SE	WS: 14 G:36 SE	WS: 14 G:36 SE	WS: 14 G:37 SE	WS: 14 G:40 SSE	WS: 12 G:38 SSE	WS: 14 G:38 S	WS: 11 G:30 S	WS: 13 G:32 SSW	WS: 12 G:28 SW	WS: 10 G:27 WSW	WS: 10 G:26 WSW	WS: 12 G:23 W	WS: 12 G:22 WNW	WS: 13 G:25 WNW	WS: 15 G:27 NW	WS: 15 G:21 NW	WS: 15 G:19 NW	WS: 14 G:19 WNW	WS: 14 G:18 WNW	WS: 15 G:19 WNW	WS: 15 G:19 NW	WS: 15 G:20 NW	WS: 15 G:22 NW	WS: 14 G:21 G:20 NW	WS: 12 G:19 NW	WS: 9 G:19 NNW	WS: 7 G:20 NNW	WS: 5 G:21 NNW	
Houston Pilots K - Shell Crude	WS: 13 G:28 SE	WS: 12 G:28 SE	WS: 12 G:29 SE	WS: 12 G:26 SE	WS: 13 G:27 SE	WS: 13 G:29 SE	WS: 13 G:33 SE	WS: 15 G:35 SE	WS: 14 G:36 SE	WS: 14 G:36 SE	WS: 14 G:38 SE	WS: 15 G:40 SSE	WS: 13 G:39 SSE	WS: 14 G:37 S	WS: 10 G:30 S	WS: 12 G:32 SSW	WS: 12 G:29 SW	WS: 10 G:27 WSW	WS: 10 G:26 WSW	WS: 12 G:23 W	WS: 12 G:22 WNW	WS: 13 G:24 WNW	WS: 15 G:27 NW	WS: 15 G:22 NW	WS: 15 G:20 NW	WS: 14 G:18 WNW	WS: 14 G:18 WNW	WS: 15 G:19 WNW	WS: 15 G:19 NW	WS: 15 G:20 NW	WS: 15 G:21 NW	WS: 14 G:21 G:20 NW	WS: 12 G:19 NW	WS: 9 G:19 NNW	WS: 7 G:20 NNW	WS: 5 G:21 NNW	
Houston Pilots J - Lynchburg Ferries	WS: 14 G:29 SE	WS: 12 G:29 SE	WS: 12 G:30 SE	WS: 12 G:28 SE	WS: 13 G:29 SE	WS: 13 G:34 SE	WS: 15 G:36 SE	WS: 14 G:36 SE	WS: 14 G:36 SE	WS: 14 G:39 SE	WS: 14 G:40 SSE	WS: 14 G:40 SSE	WS: 14 G:39 SSE	WS: 14 G:38 S	WS: 11 G:31 S	WS: 12 G:32 SSW	WS: 12 G:29 SW	WS: 10 G:28 WSW	WS: 10 G:27 WSW	WS: 12 G:23 W	WS: 12 G:22 WNW	WS: 12 G:24 WNW	WS: 15 G:27 NW	WS: 15 G:22 NW	WS: 15 G:20 NW	WS: 14 G:19 WNW	WS: 14 G:18 WNW	WS: 15 G:19 WNW	WS: 15 G:19 NW	WS: 15 G:20 NW	WS: 15 G:21 NW	WS: 13 G:20 NW	WS: 11 G:19 NNW	WS: 8 G:18 NNW	WS: 7 G:18 NNW	WS: 5 G:20 NNW	
Houston Pilots I - Exxon 3	WS: 14 G:29 SE	WS: 12 G:30 SE	WS: 13 G:31 SE	WS: 13 G:29 SE	WS: 13 G:28 SE	WS: 14 G:34 SE	WS: 14 G:35 SE	WS: 14 G:37 SE	WS: 14 G:38 SE	WS: 15 G:40 SE	WS: 16 G:40 SSE	WS: 16 G:40 SSE	WS: 15 G:39 SSE	WS: 13 G:33 SSE	WS: 11 G:31 S	WS: 12 G:31 SSW	WS: 11 G:31 SW	WS: 10 G:28 WSW	WS: 11 G:28 WSW	WS: 11 G:23 W	WS: 11 G:23 WNW	WS: 12 G:23 WNW	WS: 15 G:27 NW	WS: 15 G:24 NW	WS: 15 G:20 NW	WS: 14 G:19 NW	WS: 14 G:19 WNW	WS: 15 G:19 WNW	WS: 15 G:19 NW	WS: 15 G:20 NW	WS: 15 G:21 NW	WS: 13 G:20 NW	WS: 11 G:19 NNW	WS: 9 G:19 NNW	WS: 7 G:18 NNW	WS: 5 G:19 NNW	
Houston Pilots H - Morgans Point	WS: 15 G:29 SE	WS: 12 G:29 SE	WS: 13 G:29 SE	WS: 13 G:27 SE	WS: 13 G:26 SE	WS: 14 G:28 SE	WS: 15 G:33 SE	WS: 14 G:33 SE	WS: 15 G:36 SE	WS: 15 G:36 SE	WS: 16 G:39 SSE	WS: 16 G:38 SSE	WS: 16 G:37 SSE	WS: 12 G:30 SSE	WS: 11 G:31 S	WS: 12 G:31 SSW	WS: 11 G:31 SW	WS: 10 G:28 WSW	WS: 11 G:28 WSW	WS: 10 G:23 W	WS: 12 G:23 WNW	WS: 13 G:23 WNW	WS: 15 G:26 NW	WS: 16 G:24 NW	WS: 15 G:20 NW	WS: 14 G:19 NW	WS: 14 G:19 WNW	WS: 15 G:19 WNW	WS: 15 G:19 NW	WS: 15 G:20 NW	WS: 15 G:21 NW	WS: 14 G:20 NW	WS: 11 G:19 NNW	WS: 9 G:18 NNW	WS: 8 G:18 NNW	WS: 6 G:21 NNW	
Houston Pilots G - 75/76	WS: 17 G:30 SE	WS: 13 G:30 SE	WS: 14 G:31 SE	WS: 13 G:27 SE	WS: 13 G:22 SE	WS: 14 G:31 SE	WS: 15 G:31 SE	WS: 15 G:30 SE	WS: 16 G:34 SE	WS: 16 G:34 SE	WS: 17 G:38 SSE	WS: 17 G:35 SSE	WS: 17 G:32 SSE	WS: 13 G:27 SSE	WS: 14 G:31 S	WS: 11 G:30 SSW	WS: 11 G:32 SW	WS: 10 G:28 WSW	WS: 10 G:24 WSW	WS: 10 G:23 W	WS: 12 G:23 WNW	WS: 13 G:23 WNW	WS: 14 G:24 WNW	WS: 16 G:25 NW	WS: 15 G:24 NW	WS: 16 G:21 NW	WS: 15 G:19 NW	WS: 14 G:19 WNW	WS: 15 G:19 WNW	WS: 15 G:19 NW	WS: 15 G:20 NW	WS: 14 G:20 NW	WS: 12 G:19 NW	WS: 10 G:20 NNW	WS: 10 G:22 NNW	WS: 7 G:22 NNW	
Houston Pilots F - 63/64	WS: 18 G:31 SE	WS: 15 G:30 SE	WS: 15 G:31 SE	WS: 14 G:27 SE	WS: 14 G:23 SE	WS: 15 G:24 SE	WS: 15 G:30 SE	WS: 16 G:33 SE	WS: 16 G:34 SE	WS: 17 G:38 SSE	WS: 19 G:40 SSE	WS: 19 G:39 SSE	WS: 17 G:37 SSE	WS: 15 G:33 SSE	WS: 16 G:31 S	WS: 12 G:31 SSW	WS: 12 G:32 SW	WS: 12 G:28 WSW	WS: 10 G:24 WSW	WS: 10 G:23 W	WS: 14 G:23 WNW	WS: 17 G:25 WNW	WS: 18 G:25 NW	WS: 18 G:25 NW	WS: 21 G:25 NW	WS: 19 G:23 NW	WS: 17 G:21 NW	WS: 15 G:20 WNW	WS: 16 G:20 WNW	WS: 15 G:20 NW	WS: 16 G:20 NW	WS: 15 G:20 NW	WS: 14 G:20 NW	WS: 13 G:20 NW	WS: 12 G:20 NNW	WS: 11 G:21 NNW	WS: 9 G:22 NNW
Houston Pilots E - 51/52	WS: 18 G:31 SE	WS: 17 G:32 SE	WS: 16 G:29 SE	WS: 14 G:25 SE	WS: 14 G:24 SE	WS: 15 G:27 SE	WS: 15 G:31 SE	WS: 16 G:30 SE	WS: 16 G:34 SE	WS: 17 G:35 SE	WS: 20 G:39 SSE	WS: 17 G:37 SSE	WS: 16 G:31 SSE	WS: 16 G:31 SSE	WS: 18 G:34 S	WS: 14 G:33 SSW	WS: 12 G:33 SSW	WS: 11 G:26 WSW	WS: 11 G:24 WSW	WS: 11 G:23 W	WS: 12 G:23 WNW	WS: 18 G:25 WNW	WS: 18 G:25 NW	WS: 21 G:25 NW	WS: 19 G:23 NW	WS: 17 G:21 NW	WS: 16 G:20 WNW	WS: 16 G:20 WNW	WS: 16 G:20 NW	WS: 15 G:20 NW	WS: 15 G:20 NW	WS: 14 G:20 NW	WS: 14 G:20 NW	WS: 13 G:20 NNW	WS: 13 G:22 NNW	WS: 13 G:23 NNW	WS: 11 G:23 NNW
Houston Pilots D - 37/38	WS: 17 G:30 SE	WS: 13 G:30 SE	WS: 15 G:31 SE	WS: 13 G:27 SE	WS: 13 G:22 SE	WS: 14 G:31 SE	WS: 15 G:33 SE	WS: 15 G:33 SE	WS: 16 G:36 SE	WS: 17 G:36 SE	WS: 19 G:40 SSE	WS: 19 G:38 SSE	WS: 14 G:34 SSE	WS: 17 G:37 SSE	WS: 18 G:39 S	WS: 15 G:39 SSW	WS: 14 G:35 SSW	WS: 11 G:29 WSW	WS: 11 G:25 WSW	WS: 11 G:25 W	WS: 12 G:23 W	WS: 17 G:25 WNW	WS: 17 G:25 NW	WS: 20 G:25 NW	WS: 19 G:23 NW	WS: 18 G:21 NW	WS: 16 G:20 WNW	WS: 16 G:20 WNW	WS: 15 G:20 NW	WS: 15 G:20 NW	WS: 15 G:20 NW	WS: 14 G:20 NW	WS: 13 G:20 NW	WS: 13 G:20 NNW	WS: 13 G:22 NNW	WS: 13 G:24 NNW	
Houston Pilots C - 25/26	WS: 15 G:28 SE	WS: 17 G:33 SE	WS: 15 G:31 SE	WS: 13 G:28 SE	WS: 13 G:24 SE	WS: 14 G:32 SE	WS: 15 G:34 SE	WS: 15 G:33 SE	WS: 16 G:36 SE	WS: 17 G:37 SE	WS: 19 G:41 SE	WS: 18 G:41 SSE	WS: 16 G:36 SSE	WS: 17 G:40 G:41 S	WS: 19 G:41 SSW	WS: 16 G:36 SW	WS: 12 G:26 WSW	WS: 11 G:25 WSW	WS: 11 G:22 W	WS: 11 G:22 W	WS: 16 G:26 WNW	WS: 16 G:25 NW	WS: 16 G:25 NW	WS: 19 G:25 NW	WS: 19 G:23 NW	WS: 17 G:21 NW	WS: 16 G:20 WNW	WS: 15 G:20 WNW	WS: 14 G:20 NW	WS: 14 G:20 NW	WS: 13 G:20 NW	WS: 13 G:20 NNW	WS: 13 G:22 NNW	WS: 13 G:23 NNW	WS: 12 G:24 NNW		
Houston Pilots B - 11/12	WS: 15 G:27 SE	WS: 18 G:32 SE	WS: 15 G:30 SE	WS: 13 G:28 SE	WS: 14 G:30 SE	WS: 14 G:32 SE	WS: 15 G:34 SE	WS: 15 G:34 SE	WS: 16 G:36 SE	WS: 17 G:38 SE	WS: 19 G:41 SSE	WS: 19 G:39 SSE	WS: 16 G:35 SSE	WS: 17 G:39 S	WS: 18 G:41 S	WS: 18 G:38 SSW	WS: 14 G:39 SSW	WS: 11 G:28 WSW	WS: 11 G:26 WSW	WS: 11 G:22 W	WS: 11 G:22 W	WS: 16 G:26 WNW	WS: 16 G:26 NW	WS: 19 G:26 NW	WS: 19 G:25 NW	WS: 17 G:23 NW	WS: 16 G:21 NW	WS: 15 G:20 WNW	WS: 15 G:20 WNW	WS: 14 G:20 NW	WS: 14 G:20 NW	WS: 13 G:20 NW	WS: 13 G:21 NNW	WS: 13 G:23 NNW	WS: 13 G:24 NNW	WS: 12 G:25 NNW	
Houston Pilots A - 1 & 2 Bravo	WS: 16 G:26 SE	WS: 19 G:30 SE	WS: 17 G:30 SE	WS: 15 G:30 SE	WS: 15 G:31 SE	WS: 16 G:33 SE	WS: 17 G:34 SE	WS: 19 G:36 SE	WS: 19 G:37 SE	WS: 21 G:39 SE	WS: 21 G:39 SE	WS: 19 G:38 SSE	WS: 19 G:35 SSE	WS: 20 G:38 S	WS: 18 G:35 SSW	WS: 20 G:39 SW	WS: 20 G:37 SW	WS: 16 G:26 WSW	WS: 14 G:24 WSW	WS: 13 G:24 W	WS: 18 G:26 WNW	WS: 18 G:26 NW	WS: 21 G:27 NW	WS: 22 G:25 NW	WS: 20 G:23 NW	WS: 19 G:23 NW	WS: 18 G:23 NW	WS: 17 G:22 NW	WS: 16 G:22 NW	WS: 15 G:22 NW	WS: 14 G:22 NW	WS: 14 G:23 NW	WS: 15 G:24 NNW	WS: 14 G:25 NNW	WS: 15 G:25 NNW	WS: 14 G:25 NNW	

Data may be too aggressive with winds. See slides below for official thoughts on winds.

# Houston Pilots Extended Range Visibility Report



## Sunday 3/20/22

Fog is not expected on Sunday.

### Confidence

Above  
Normal

Below  
Normal

## Monday, 3/21/22

Tuesday will continue the breezy winds and limit fog potential.

### Confidence

Above  
Normal

Below  
Normal

## Monday, 3/21/22

Fog is not favored Monday. Elevated winds likely limit any fog threat.

### Confidence

Above  
Normal

Below  
Normal

### Daily Fog Chance

Sunday AM

Unlikely

Monday AM

Unlikely

Tuesday AM

Unlikely



# Houston Pilots: *Thu. 3/17/2022*

## Forecast Discussion

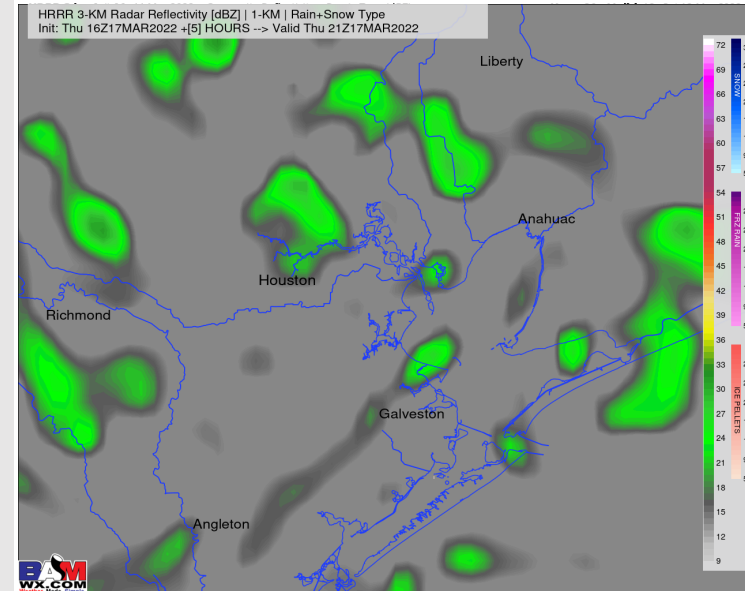
**Precip:** The next few hours are favored to be dry before the next round of rain showers work in starting ~5 PM. Precip looks to be rather scattered and on the lighter side through the evening.

**Wind:** SE winds of 10-15 MPH with gusts 15-20 MPH through the afternoon is favored. Sustained winds after sundown are 13 – 18 MPH with gusts 18-23 MPH.

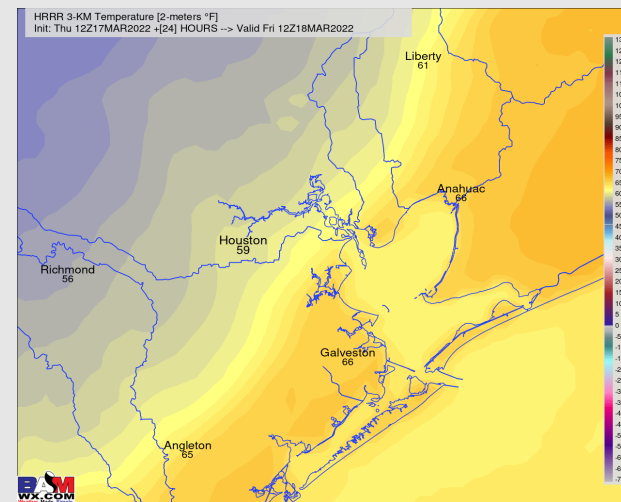
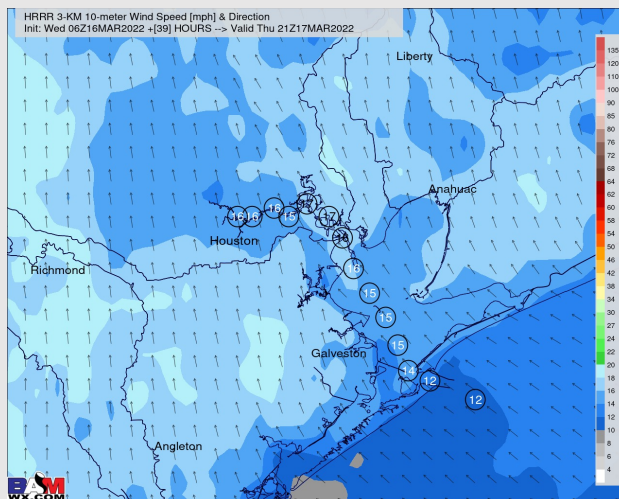
**Temps:** Temps will stay in the mid to upper 60s before the front near daybreak tomorrow.

**Visibility:** Check slide below for the latest.

## Precip Forecast: 6 PM CT



**Wind Speed:**  
5 PM CT



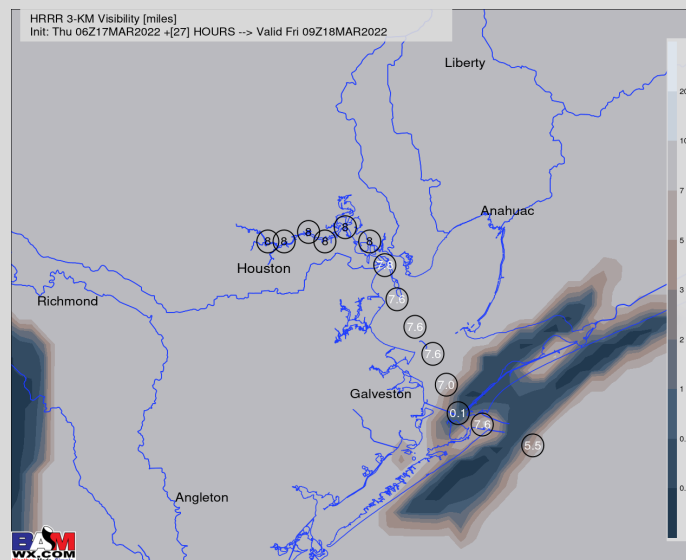
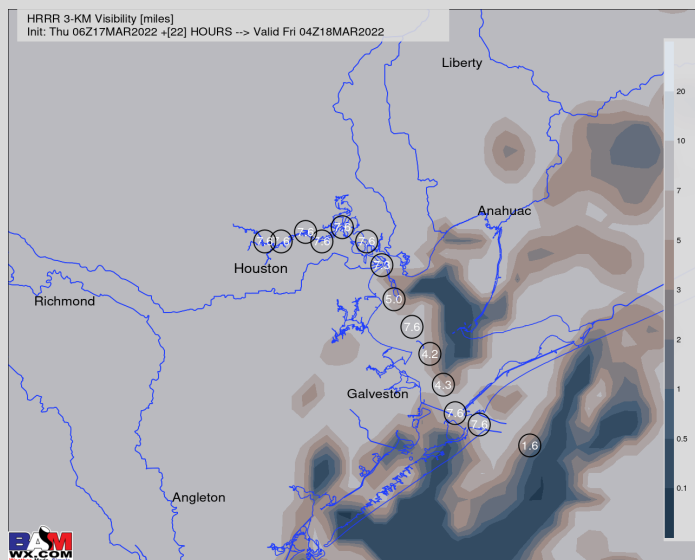
**Temps 6 AM  
Friday**

# Houston Pilots Visibility Report

11 PM THU Visibility (miles)

4 AM FRI Visibility (miles)

Confidence



**Above  
Normal**

**Below  
Normal**

**Reduced Visibility Threat**

10 PM THU – 6 AM FRI

**Low-  
Medium**

- Patchy, hit and miss reduced visibilities coming in the form of rain/mist/patchy fog will all be possible late this evening into the early morning hours of Friday. The best window as it stands now for any patchy fog would be 3 – 6 AM. Regardless, we do favor for visibilities to lower to at least 3-5 miles (if not lower) periodically in this timeframe. Lowest confidence of the forecast comes as to whether any visibility issues come from 3-5 mile vis. mist or 1-2 mile vis. patchy fog.
- Currently we are in favor of winds staying just elevated enough to make limited visibility likely come in the form of rain/mist/drizzle, however we want to make the note that if winds weaken any, a few instance of patchy fog would be possible for any stations S of Morgan's Point.
- After ~6 AM, the front should pass the area and sweep away any visibility concerns.

# Houston Pilots: *Fri. 3/18/2022*

## Forecast Discussion

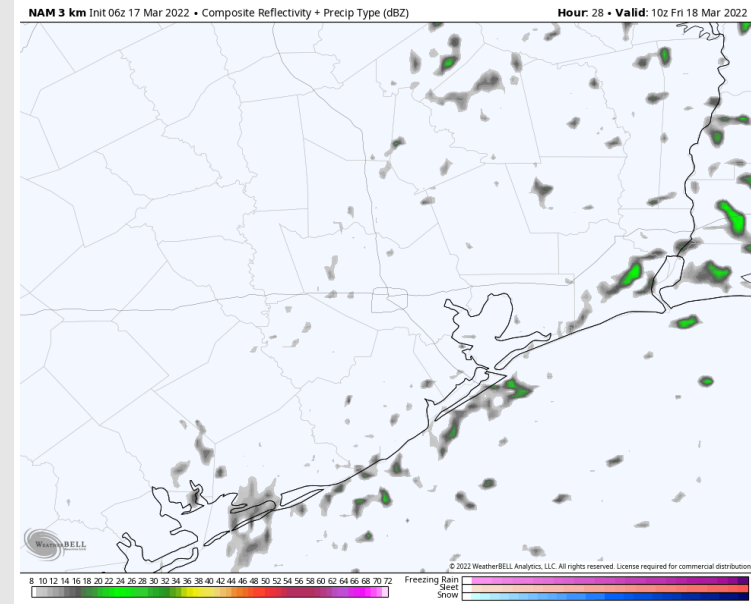
**Precip:** The pocket of showers look to generally exit the area by ~2 AM, with a few pockets of sprinkles/drizzle possible through ~6-7 AM. Things have trended a bit quicker with the exit of precipitation.

**Wind:** Sustained winds look to be 13-18 MPH through the early AM hours before increasing between 9A – 2P (sustained 20-25 MPH, gusts 25-30 MPH). Winds veer from the SW to the NW between 3 and 8 AM. Winds then return back to 13-18 MPH sustained with gusts to 20 MPH for the rest of the day out of the NW. Sustained winds are anticipated to slowly decrease after sundown and look to be 10-15 MPH from the NW.

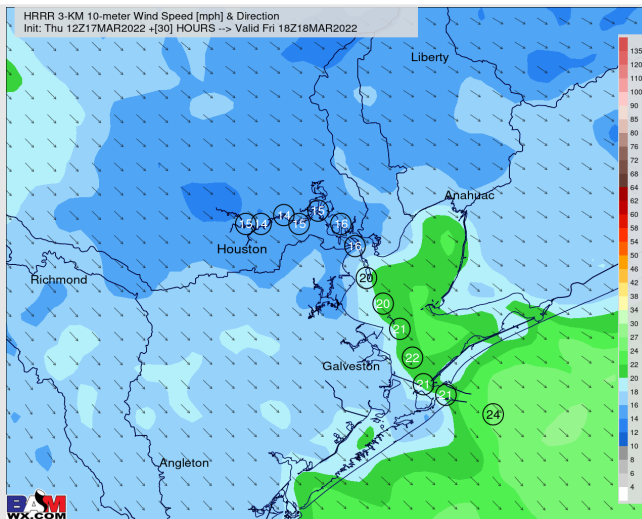
**Temps:** High temps Friday sit right near 70 F.

**Visibility:** Check the slide above for more information.

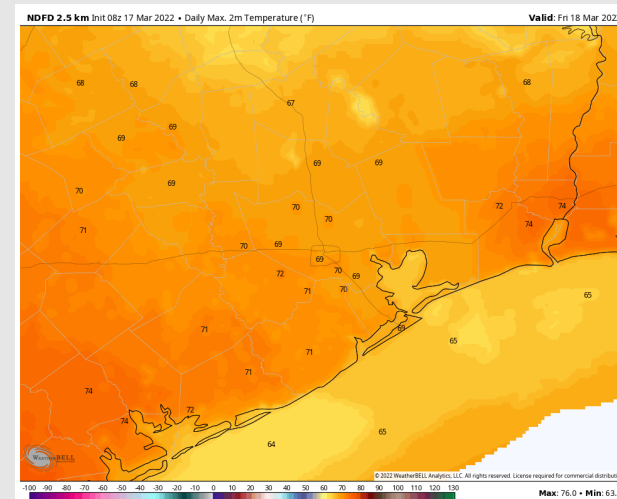
## Precip Forecast: 6 AM CT



Wind Speed  
2 PM CT



High Temps  
Friday



# Houston Pilots: Sat. 3/19/2022

## Forecast Discussion

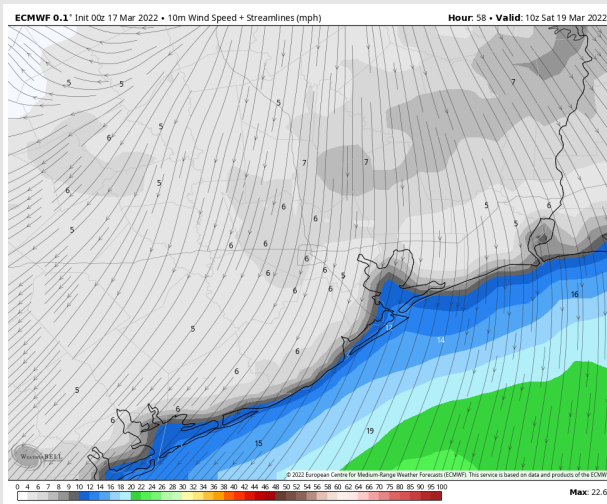
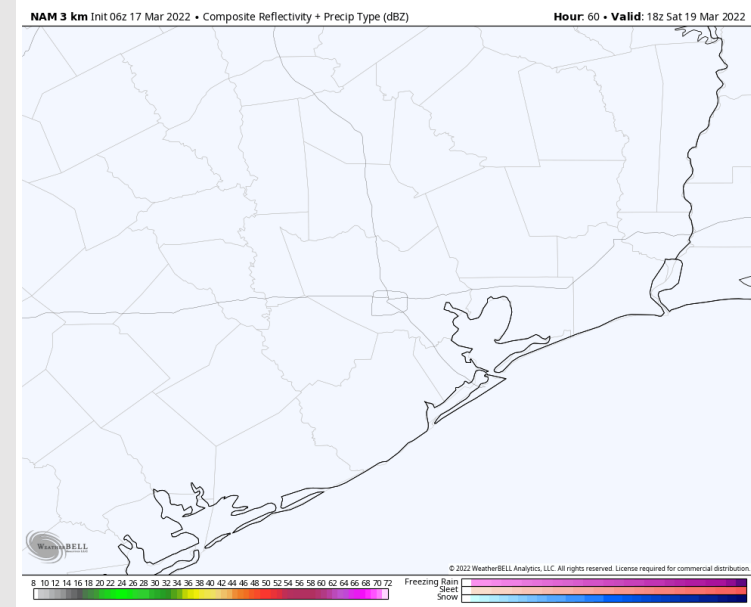
**Precip:** Dry conditions are anticipated.

**Wind:** Winds out through 11 AM will be coming from the NNE at 10-15 MPH sustained. Beyond this, winds calm to 5-10 MPH with variable direction.

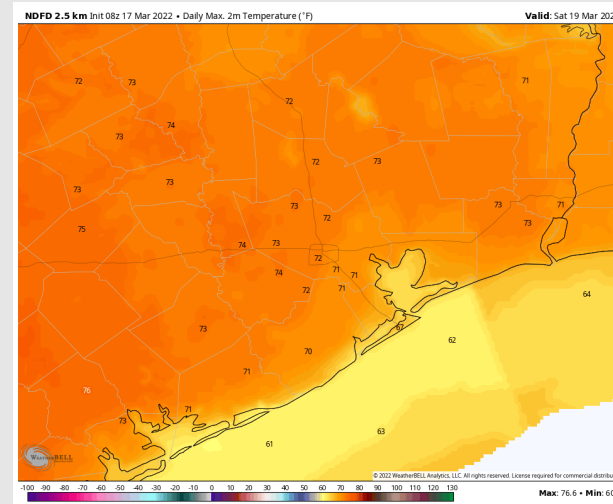
**Temps:** Highs expected to reach the the upper 60s/ lower 70s.

**Visibility:** No fog favored for our stations.

## Precip Forecast: 1 PM CT



Wind Speed  
5 AM CT



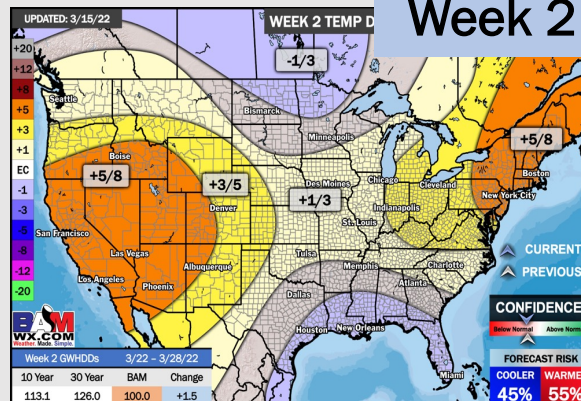
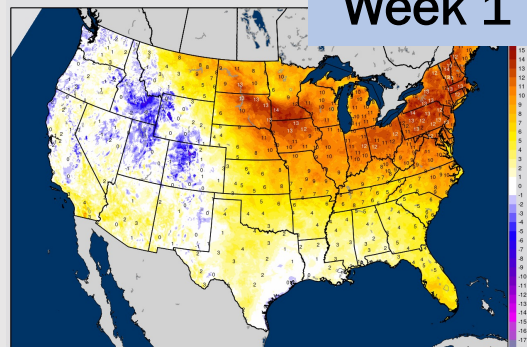
High Temps  
Saturday



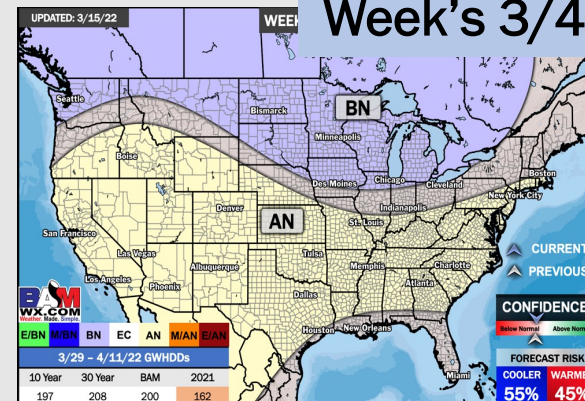
# Houston Pilots: 3/17/22

BAMCast Average Temperature Anomaly [°F]  
7-DAY AVG for Tue 15MAR2022 thru Mon 21MAR2022 Days 1 to 7

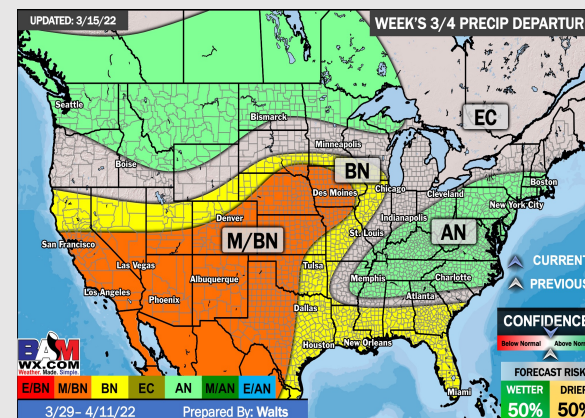
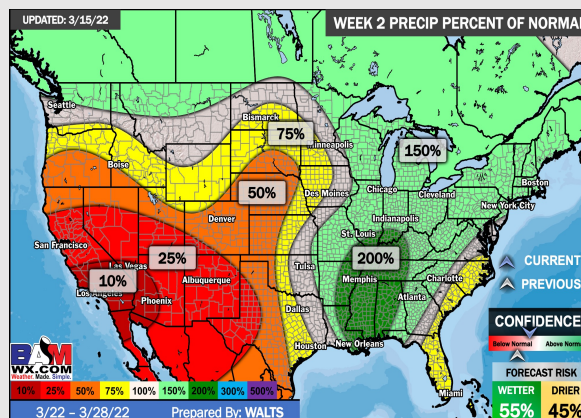
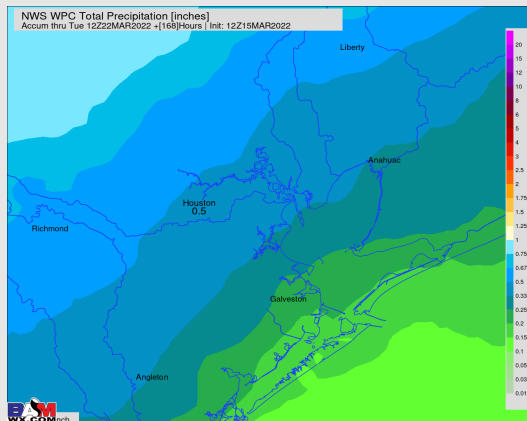
## Week 1



## Week's 3/4



NWS WPC Total Precipitation (inches)  
Accum thru Tue 12Z22MAR2022 +/-168hours Init: 12Z15MAR2022



- Next wave of precip to watch will come Monday PM out ahead of the next front into Tuesday PM. Drier conditions then likely take place.
- The week 2 timeframe is expected to have slightly below normal risks for temperatures and near normal to slightly above normal risks for precipitation.
- Right now, we are favoring above normal temperatures and below normal risks for precip for the weeks 3 / 4 timeframe.