

Houston Pilots Forecast Package



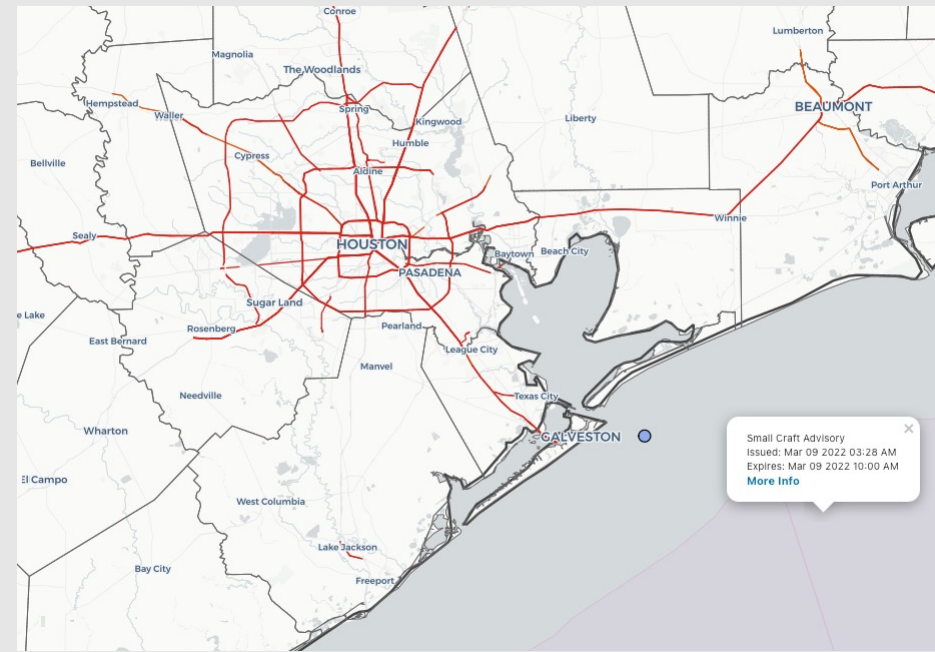
Updated: 5:00 AM CT

Wednesday, March 9, 2022

Forecaster: Vince Bryan

Weather Headlines

- Aside from very minor precip chances today, the next best shot of rain comes Friday with the cold front that will work through the area
- Worth watching late Thursday night into Friday AM for a minor fog potential, but right now we are not in favor of this development.
- Very strong winds work start to work through the area in the ~4-7 PM window on Friday PM and continue into Sat AM (thanks to the cold front). Peak sustained winds of 30-40+ MPH will be possible Friday evening with gusts higher. Wind watches/warnings will be needed.



Radar/ NWS Alerts: 5:00 AM CT



As always, please do not hesitate to reach out to us with any forecast questions via the chat option on the Weather Porthole or our on-call number, **(317)-560-8122** press 1 for forecast questions.

Houston Pilots Visibility Report



Time	03-09-2022 Wed 3am	03-09-2022 Wed 4am	03-09-2022 Wed 5am	03-09-2022 Wed 6am	03-09-2022 Wed 7am	03-09-2022 Wed 8am	03-09-2022 Wed 9am	03-09-2022 Wed 10am	03-09-2022 Wed 11am	03-09-2022 Wed 12pm	03-09-2022 Wed 1pm	03-09-2022 Wed 2pm	03-09-2022 Wed 3pm	03-09-2022 Wed 4pm	03-09-2022 Wed 5pm	03-09-2022 Wed 6pm	03-09-2022 Wed 7pm	03-09-2022 Wed 8pm	03-09-2022 Wed 9pm	03-09-2022 Wed 10pm	03-09-2022 Wed 11pm	03-10-2022 Thu 12am	03-10-2022 Thu 1am	03-10-2022 Thu 2am	03-10-2022 Thu 3am	03-10-2022 Thu 4am	03-10-2022 Thu 5am	03-10-2022 Thu 6am	03-10-2022 Thu 7am	03-10-2022 Thu 8am	03-10-2022 Thu 9am	03-10-2022 Thu 10am	03-10-2022 Thu 11am	03-10-2022 Thu 12pm	03-10-2022 Thu 1pm	03-10-2022 Thu 2pm
Houston Pilots N - 610 Bridge	8.210	8.600	8.435	8.719	8.859	9.213	9.239	9.859	10.000	10.000	10.000	10.000	10.000	10.000	10.000	10.000	10.000	10.000	10.000	10.000	10.000	10.000	10.000	10.000	10.000	10.000	9.132	7.149	6.542	9.737	10.000	10.000	10.000	10.000	10.000	10.000
Houston Pilots M - Kinder 1	8.206	8.514	8.383	8.689	8.848	9.197	9.214	9.834	10.000	10.000	10.000	10.000	10.000	10.000	10.000	10.000	10.000	10.000	10.000	10.000	10.000	10.000	10.000	10.000	10.000	10.000	9.076	7.119	6.575	9.812	10.000	10.000	10.000	10.000	10.000	10.000
Houston Pilots L - Greens Bayou	8.236	8.355	8.256	8.682	8.823	9.193	9.234	9.829	10.000	10.000	10.000	10.000	10.000	10.000	10.000	10.000	10.000	10.000	10.000	10.000	10.000	10.000	10.000	10.000	10.000	10.000	8.963	7.031	6.603	9.917	10.000	10.000	10.000	10.000	10.000	10.000
Houston Pilots K - Shell Crude	8.261	8.268	8.174	8.662	8.829	9.131	9.189	9.829	10.000	10.000	10.000	10.000	10.000	10.000	10.000	10.000	10.000	10.000	10.000	10.000	10.000	10.000	10.000	10.000	10.000	10.000	8.943	7.107	6.741	9.944	10.000	10.000	10.000	10.000	10.000	10.000
Houston Pilots J - Lynchburg Ferries	8.309	8.157	8.132	8.707	8.811	9.173	9.284	9.860	10.000	10.000	10.000	10.000	10.000	10.000	10.000	10.000	10.000	10.000	10.000	10.000	10.000	10.000	10.000	10.000	10.000	9.983	8.891	7.001	6.647	9.944	9.998	10.000	10.000	10.000	10.000	10.000
Houston Pilots I - Exxon 3	8.378	8.165	8.095	8.743	8.900	9.085	9.239	9.884	10.000	10.000	10.000	10.000	10.000	10.000	10.000	10.000	10.000	10.000	10.000	10.000	9.942	9.908	9.930	9.907	8.843	8.850	7.173	6.877	9.749	9.900	9.938	10.000	10.000	10.000	10.000	10.000
Houston Pilots H - Morgans Point	8.479	8.286	8.116	8.797	9.036	9.052	9.198	9.839	10.000	10.000	10.000	10.000	10.000	10.000	10.000	10.000	10.000	10.000	10.000	10.000	10.000	9.716	9.723	9.686	9.587	8.822	7.464	7.179	9.434	9.708	9.998	10.000	10.000	10.000	10.000	10.000
Houston Pilots G - 75/76	8.585	8.479	8.222	8.821	9.128	9.151	9.303	9.788	10.000	10.000	10.000	10.000	10.000	10.000	10.000	10.000	10.000	10.000	10.000	10.000	10.000	9.765	9.507	9.490	9.386	8.947	8.022	7.448	9.212	9.515	10.000	10.000	10.000	10.000	10.000	10.000
Houston Pilots F - 63/64	8.669	8.698	8.444	8.943	9.225	9.335	9.447	9.768	10.000	10.000	10.000	10.000	10.000	10.000	10.000	10.000	10.000	10.000	10.000	10.000	10.000	10.000	9.335	9.335	9.256	9.088	8.543	7.704	9.030	9.356	10.000	10.000	10.000	10.000	10.000	10.000
Houston Pilots E - 51/52	8.671	8.835	8.660	9.037	9.249	9.410	9.525	9.835	10.000	10.000	10.000	10.000	10.000	10.000	10.000	10.000	10.000	10.000	10.000	10.000	10.000	10.000	9.543	9.304	9.280	9.254	8.927	7.959	8.980	9.304	10.000	10.000	10.000	10.000	10.000	10.000
Houston Pilots D - 37/38	8.623	8.842	8.827	9.016	9.296	9.469	9.655	9.993	10.000	10.000	10.000	10.000	10.000	10.000	10.000	10.000	10.000	10.000	10.000	10.000	10.000	10.000	10.000	9.794	9.609	9.435	9.270	8.173	8.979	9.373	9.894	10.000	10.000	10.000	10.000	10.000
Houston Pilots C - 25/26	8.557	8.779	8.896	8.924	9.390	9.538	9.776	10.000	10.000	10.000	10.000	10.000	10.000	10.000	10.000	10.000	10.000	10.000	10.000	10.000	10.000	10.000	10.000	10.000	10.000	9.943	9.568	8.511	8.959	9.319	9.550	10.000	10.000	10.000	10.000	10.000
Houston Pilots B - 11/12	8.451	8.698	8.808	8.763	9.315	9.565	9.846	10.000	10.000	10.000	10.000	10.000	10.000	10.000	10.000	10.000	10.000	10.000	10.000	10.000	10.000	10.000	10.000	10.000	10.000	10.000	9.785	8.801	8.953	9.222	9.361	9.765	10.000	10.000	10.000	10.000
Houston Pilots A - 1 & 2 Bravo	8.176	8.433	8.503	8.490	9.051	9.700	10.000	10.000	10.000	10.000	10.000	10.000	10.000	10.000	10.000	10.000	10.000	10.000	10.000	10.000	10.000	10.000	10.000	10.000	10.000	10.000	10.000	10.000	9.223	9.006	9.072	9.040	9.233	9.711	9.914	9.739

Not anticipating fog today.

Houston Pilots Wind Report



Confidence

Above Normal

Below Normal

Sustained wind 13 MPH

Gusts 18 MPH

Wind from the N

Example

WS: 13
G:18
N

Time	03-09-2022 Wed 3am	03-09-2022 Wed 4am	03-09-2022 Wed 5am	03-09-2022 Wed 6am	03-09-2022 Wed 7am	03-09-2022 Wed 8am	03-09-2022 Wed 9am	03-09-2022 Wed 10am	03-09-2022 Wed 11am	03-09-2022 Wed 12pm	03-09-2022 Wed 1pm	03-09-2022 Wed 2pm	03-09-2022 Wed 3pm	03-09-2022 Wed 4pm	03-09-2022 Wed 5pm	03-09-2022 Wed 6pm	03-09-2022 Wed 7pm	03-09-2022 Wed 8pm	03-09-2022 Wed 9pm	03-09-2022 Wed 10pm	03-09-2022 Wed 11pm	03-10-2022 Thu 12am	03-10-2022 Thu 1am	03-10-2022 Thu 2am	03-10-2022 Thu 3am	03-10-2022 Thu 4am	03-10-2022 Thu 5am	03-10-2022 Thu 6am	03-10-2022 Thu 7am	03-10-2022 Thu 8am	03-10-2022 Thu 9am	03-10-2022 Thu 10am	03-10-2022 Thu 11am	03-10-2022 Thu 12pm	03-10-2022 Thu 1pm	03-10-2022 Thu 2pm		
Houston Pilots N - 610 Bridge	WS: 9 G: 21 N	WS: 9 G: 21 NNE	WS: 11 G: 23 NNE	WS: 9 G: 22 NNE	WS: 7 G: 20 NNE	WS: 7 G: 18 NE	WS: 6 G: 16 NE	WS: 6 G: 15 NNE	WS: 6 G: 14 NNE	WS: 8 G: 15 NNE	WS: 7 G: 13 NNE	WS: 8 G: 11 NNE	WS: 7 G: 9 NNE	WS: 7 G: 9 NNE	WS: 6 G: 8 NE	WS: 5 G: 6 NE	WS: 4 G: 5 NE	WS: 4 G: 5 ENE	WS: 3 G: 6 ENE	WS: 3 G: 6 ENE	WS: 4 G: 7 ENE	WS: 4 G: 7 ENE	WS: 4 G: 7 NE	WS: 4 G: 7 NE	WS: 4 G: 7 ENE	WS: 4 G: 7 ENE	WS: 4 G: 8 ENE	WS: 3 G: 6 ENE	WS: 4 G: 6 ENE	WS: 5 G: 6 ENE	WS: 5 G: 6 E	WS: 5 G: 7 ENE	WS: 5 G: 6 ENE	WS: 5 G: 6 E	WS: 5 G: 7 E	WS: 5 G: 7 E		
Houston Pilots M - Kinder 1	WS: 9 G: 21 N	WS: 9 G: 21 NNE	WS: 11 G: 23 NNE	WS: 8 G: 21 NNE	WS: 7 G: 21 NNE	WS: 7 G: 18 NE	WS: 6 G: 16 NE	WS: 6 G: 15 NNE	WS: 6 G: 14 NNE	WS: 8 G: 15 NNE	WS: 8 G: 13 NNE	WS: 8 G: 11 NNE	WS: 7 G: 9 NNE	WS: 7 G: 9 NNE	WS: 6 G: 8 NE	WS: 5 G: 6 NE	WS: 4 G: 5 NE	WS: 4 G: 5 ENE	WS: 3 G: 6 ENE	WS: 3 G: 6 ENE	WS: 4 G: 7 ENE	WS: 4 G: 7 ENE	WS: 4 G: 7 NE	WS: 4 G: 7 NE	WS: 4 G: 7 ENE	WS: 4 G: 7 ENE	WS: 4 G: 7 ENE	WS: 3 G: 6 ENE	WS: 4 G: 6 ENE	WS: 5 G: 6 ENE	WS: 5 G: 6 ENE	WS: 5 G: 6 E	WS: 5 G: 7 ENE	WS: 5 G: 6 ENE	WS: 5 G: 6 E	WS: 5 G: 7 E	WS: 5 G: 7 E	
Houston Pilots L - Greens Bayou	WS: 10 G: 22 N	WS: 10 G: 21 N	WS: 11 G: 23 NNE	WS: 8 G: 21 NNE	WS: 7 G: 22 NNE	WS: 7 G: 18 NE	WS: 6 G: 16 NE	WS: 6 G: 15 NNE	WS: 7 G: 15 NNE	WS: 8 G: 15 NNE	WS: 8 G: 13 NNE	WS: 8 G: 11 NNE	WS: 7 G: 9 NNE	WS: 7 G: 9 NNE	WS: 6 G: 8 NE	WS: 5 G: 6 NE	WS: 4 G: 5 NE	WS: 4 G: 5 ENE	WS: 4 G: 5 ENE	WS: 3 G: 6 ENE	WS: 4 G: 7 ENE	WS: 4 G: 7 ENE	WS: 4 G: 7 NE	WS: 4 G: 7 NE	WS: 4 G: 7 ENE	WS: 4 G: 7 ENE	WS: 4 G: 7 ENE	WS: 5 G: 6 ENE	WS: 4 G: 6 ENE	WS: 4 G: 6 ENE	WS: 5 G: 6 ENE	WS: 5 G: 6 ENE	WS: 5 G: 6 E	WS: 5 G: 6 ENE	WS: 5 G: 6 E	WS: 5 G: 6 E	WS: 5 G: 6 E	
Houston Pilots K - Shell Crude	WS: 10 G: 22 N	WS: 10 G: 21 N	WS: 11 G: 23 NNE	WS: 8 G: 21 NNE	WS: 7 G: 23 NNE	WS: 7 G: 18 NE	WS: 6 G: 16 NE	WS: 6 G: 15 NNE	WS: 7 G: 14 NNE	WS: 8 G: 15 NNE	WS: 8 G: 13 NNE	WS: 8 G: 11 N	WS: 7 G: 9 NNE	WS: 7 G: 9 NNE	WS: 6 G: 8 NNE	WS: 5 G: 5 NE	WS: 4 G: 5 NE	WS: 4 G: 6 ENE	WS: 4 G: 6 ENE	WS: 4 G: 6 ENE	WS: 4 G: 6 ENE	WS: 4 G: 7 ENE	WS: 4 G: 7 ENE	WS: 4 G: 7 NE	WS: 4 G: 7 NE	WS: 4 G: 7 ENE	WS: 5 G: 7 ENE	WS: 5 G: 7 ENE	WS: 4 G: 6 ENE	WS: 4 G: 6 ENE	WS: 5 G: 6 ENE	WS: 5 G: 6 ENE	WS: 5 G: 6 E	WS: 5 G: 6 ENE	WS: 5 G: 6 E	WS: 5 G: 6 E	WS: 5 G: 6 E	
Houston Pilots J - Lynchburg Ferries	WS: 10 G: 23 NE	WS: 10 G: 22 N	WS: 12 G: 24 N	WS: 8 G: 21 NNE	WS: 7 G: 23 NNE	WS: 7 G: 18 NE	WS: 6 G: 17 NE	WS: 6 G: 15 NNE	WS: 7 G: 15 NNE	WS: 8 G: 15 NNE	WS: 8 G: 13 NNE	WS: 9 G: 11 N	WS: 7 G: 9 NNE	WS: 7 G: 8 NNE	WS: 6 G: 8 NNE	WS: 5 G: 5 NE	WS: 4 G: 5 NE	WS: 4 G: 6 NE	WS: 4 G: 5 ENE	WS: 4 G: 6 ENE	WS: 4 G: 6 ENE	WS: 4 G: 7 ENE	WS: 4 G: 7 ENE	WS: 4 G: 7 NE	WS: 4 G: 7 NE	WS: 5 G: 7 ENE	WS: 5 G: 7 ENE	WS: 5 G: 7 ENE	WS: 4 G: 6 ENE	WS: 4 G: 6 ENE	WS: 5 G: 6 ENE	WS: 5 G: 6 ENE	WS: 5 G: 6 E	WS: 5 G: 6 ENE	WS: 5 G: 6 E	WS: 5 G: 6 E	WS: 5 G: 6 E	
Houston Pilots I - Exxon 3	WS: 11 G: 23 SW	WS: 11 G: 22 N	WS: 12 G: 24 N	WS: 9 G: 22 NNE	WS: 7 G: 23 NNE	WS: 7 G: 17 NE	WS: 7 G: 17 NE	WS: 7 G: 15 NNE	WS: 8 G: 14 NNE	WS: 9 G: 15 NNE	WS: 9 G: 13 NNE	WS: 9 G: 11 NNE	WS: 8 G: 10 NNE	WS: 7 G: 9 NNE	WS: 6 G: 8 NNE	WS: 4 G: 5 NE	WS: 4 G: 5 NE	WS: 4 G: 6 NE	WS: 4 G: 6 ENE	WS: 4 G: 6 ENE	WS: 4 G: 6 ENE	WS: 5 G: 8 ENE	WS: 5 G: 8 ENE	WS: 5 G: 7 NE	WS: 5 G: 7 NE	WS: 5 G: 7 ENE	WS: 5 G: 8 ENE	WS: 5 G: 7 ENE	WS: 5 G: 6 ENE	WS: 5 G: 6 ENE	WS: 5 G: 6 ENE	WS: 5 G: 6 ENE	WS: 5 G: 6 E	WS: 5 G: 6 ENE	WS: 5 G: 6 E	WS: 5 G: 6 E	WS: 5 G: 6 E	
Houston Pilots H - Morgans Point	WS: 12 G: 24 NW	WS: 12 G: 22 N	WS: 13 G: 25 N	WS: 12 G: 25 NNE	WS: 9 G: 24 NNE	WS: 8 G: 17 NE	WS: 8 G: 17 NE	WS: 7 G: 16 NNE	WS: 7 G: 15 NNE	WS: 9 G: 14 NNE	WS: 9 G: 14 NNE	WS: 9 G: 12 NNE	WS: 8 G: 10 NNE	WS: 7 G: 9 NNE	WS: 6 G: 8 NNE	WS: 4 G: 6 NE	WS: 4 G: 6 NE	WS: 4 G: 6 ENE	WS: 5 G: 7 ENE	WS: 5 G: 7 ENE	WS: 5 G: 8 ENE	WS: 6 G: 9 ENE	WS: 6 G: 9 ENE	WS: 6 G: 9 NE	WS: 6 G: 9 NE	WS: 6 G: 9 ENE	WS: 6 G: 9 ENE	WS: 6 G: 9 ENE	WS: 6 G: 8 ENE	WS: 6 G: 8 ENE	WS: 5 G: 7 ENE	WS: 5 G: 6 ENE	WS: 5 G: 6 ENE	WS: 5 G: 6 E	WS: 5 G: 6 ENE	WS: 5 G: 6 E		
Houston Pilots G - 75/76	WS: 17 G: 25 S	WS: 16 G: 22 N	WS: 18 G: 25 N	WS: 19 G: 24 NNE	WS: 16 G: 24 NE	WS: 11 G: 16 NE	WS: 11 G: 17 NE	WS: 10 G: 16 NNE	WS: 12 G: 17 NNE	WS: 11 G: 14 NNE	WS: 11 G: 15 NNE	WS: 11 G: 13 NNE	WS: 11 G: 10 NNE	WS: 8 G: 9 NNE	WS: 8 G: 9 NNE	WS: 5 G: 7 ENE	WS: 5 G: 7 NE	WS: 5 G: 8 ENE	WS: 6 G: 9 ENE	WS: 6 G: 9 ENE	WS: 7 G: 10 ENE	WS: 8 G: 11 ENE	WS: 8 G: 11 ENE	WS: 9 G: 11 ENE	WS: 8 G: 12 ENE	WS: 8 G: 11 ENE	WS: 8 G: 11 ENE	WS: 8 G: 10 ENE	WS: 8 G: 10 ENE	WS: 7 G: 9 ENE	WS: 6 G: 8 ENE	WS: 6 G: 8 ENE	WS: 6 G: 7 ENE	WS: 6 G: 7 E	WS: 6 G: 7 E	WS: 6 G: 7 E	WS: 6 G: 7 E	
Houston Pilots F - 63/64	WS: 21 G: 25 N	WS: 20 G: 23 N	WS: 21 G: 25 NNE	WS: 22 G: 27 NNE	WS: 19 G: 24 NE	WS: 13 G: 16 NE	WS: 13 G: 18 NNE	WS: 12 G: 18 NNE	WS: 14 G: 19 NNE	WS: 13 G: 17 NNE	WS: 13 G: 16 NNE	WS: 12 G: 14 NNE	WS: 11 G: 11 NNE	WS: 9 G: 10 NNE	WS: 9 G: 10 NNE	WS: 5 G: 7 NE	WS: 5 G: 7 ENE	WS: 6 G: 8 ENE	WS: 6 G: 9 ENE	WS: 6 G: 9 ENE	WS: 7 G: 10 ENE	WS: 9 G: 12 ENE	WS: 9 G: 12 ENE	WS: 9 G: 12 ENE	WS: 10 G: 13 ENE	WS: 10 G: 12 ENE	WS: 10 G: 12 ENE	WS: 10 G: 12 ENE	WS: 9 G: 12 ENE	WS: 9 G: 11 ENE	WS: 8 G: 10 ENE	WS: 7 G: 9 ENE	WS: 6 G: 8 ENE	WS: 5 G: 7 ENE	WS: 5 G: 7 E	WS: 6 G: 8 E	WS: 6 G: 8 E	
Houston Pilots E - 51/52	WS: 22 G: 25 N	WS: 22 G: 24 N	WS: 21 G: 23 NNE	WS: 23 G: 25 NNE	WS: 19 G: 24 NE	WS: 13 G: 17 NE	WS: 13 G: 16 NE	WS: 14 G: 15 NNE	WS: 14 G: 14 NNE	WS: 14 G: 14 NNE	WS: 14 G: 13 NNE	WS: 14 G: 12 NNE	WS: 11 G: 11 ENE	WS: 11 G: 11 ENE	WS: 10 G: 11 NNE	WS: 5 G: 8 NE	WS: 5 G: 7 ENE	WS: 6 G: 8 ENE	WS: 7 G: 9 ENE	WS: 7 G: 9 ENE	WS: 7 G: 10 ENE	WS: 9 G: 11 ENE	WS: 9 G: 11 ENE	WS: 10 G: 12 ENE	WS: 10 G: 13 ENE	WS: 10 G: 13 ENE	WS: 10 G: 12 ENE	WS: 10 G: 12 ENE	WS: 10 G: 12 ENE	WS: 9 G: 12 ENE	WS: 9 G: 11 ENE	WS: 7 G: 9 ENE	WS: 6 G: 8 ENE	WS: 5 G: 7 ENE	WS: 5 G: 7 E	WS: 6 G: 8 E	WS: 6 G: 8 E	
Houston Pilots D - 37/38	WS: 22 G: 25 N	WS: 22 G: 26 N	WS: 23 G: 24 NNE	WS: 22 G: 26 NNE	WS: 19 G: 24 NE	WS: 13 G: 17 NE	WS: 13 G: 16 NE	WS: 14 G: 15 NNE	WS: 14 G: 14 NNE	WS: 14 G: 14 NNE	WS: 14 G: 13 NNE	WS: 13 G: 12 N	WS: 12 G: 12 S	WS: 11 G: 11 S	WS: 11 G: 11 S	WS: 5 G: 7 NE	WS: 5 G: 7 ENE	WS: 6 G: 8 ENE	WS: 6 G: 8 ENE	WS: 7 G: 9 ENE	WS: 7 G: 9 ENE	WS: 9 G: 10 ENE	WS: 9 G: 10 ENE	WS: 10 G: 10 ENE	WS: 10 G: 10 ENE	WS: 10 G: 10 ENE	WS: 10 G: 10 ENE	WS: 10 G: 10 ENE	WS: 9 G: 10 ENE	WS: 9 G: 10 ENE	WS: 8 G: 10 ENE	WS: 7 G: 9 ENE	WS: 6 G: 8 ENE	WS: 5 G: 7 ENE	WS: 5 G: 7 E	WS: 6 G: 8 E	WS: 6 G: 8 E	
Houston Pilots C - 25/26	WS: 20 G: 24 N	WS: 22 G: 26 NNE	WS: 20 G: 23 NNE	WS: 21 G: 26 NNE	WS: 17 G: 25 NE	WS: 12 G: 17 NE	WS: 13 G: 16 NE	WS: 13 G: 15 NNE	WS: 14 G: 16 NNE	WS: 13 G: 15 NNE	WS: 13 G: 14 NNE	WS: 12 G: 13 N	WS: 12 G: 12 S	WS: 10 G: 11 E	WS: 10 G: 11 E	WS: 5 G: 7 NE	WS: 5 G: 7 ENE	WS: 6 G: 8 ENE	WS: 6 G: 8 ENE	WS: 7 G: 9 ENE	WS: 9 G: 10 ENE	WS: 9 G: 10 ENE	WS: 10 G: 10 ENE	WS: 10 G: 10 ENE	WS: 10 G: 10 ENE	WS: 10 G: 10 ENE	WS: 10 G: 10 ENE	WS: 10 G: 10 ENE	WS: 9 G: 10 ENE	WS: 9 G: 10 ENE	WS: 8 G: 10 ENE	WS: 7 G: 9 ENE	WS: 6 G: 8 ENE	WS: 5 G: 7 ENE	WS: 5 G: 7 E	WS: 6 G: 8 E	WS: 6 G: 8 E	
Houston Pilots B - 11/12	WS: 18 G: 24 N	WS: 20 G: 25 NNE	WS: 18 G: 23 NNE	WS: 16 G: 22 NNE	WS: 16 G: 24 NE	WS: 12 G: 17 NE	WS: 12 G: 16 NE	WS: 13 G: 15 NNE	WS: 13 G: 14 NNE	WS: 14 G: 15 NNE	WS: 12 G: 13 NNE	WS: 11 G: 12 NNE	WS: 11 G: 11 E	WS: 8 G: 9 ENE	WS: 7 G: 8 ENE	WS: 5 G: 7 ENE	WS: 5 G: 7 ENE	WS: 6 G: 8 ENE	WS: 7 G: 8 ENE	WS: 7 G: 8 ENE	WS: 8 G: 9 ENE	WS: 9 G: 10 ENE	WS: 9 G: 10 ENE	WS: 10 G: 10 ENE	WS: 10 G: 10 ENE	WS: 10 G: 10 ENE	WS: 10 G: 10 ENE	WS: 10 G: 10 ENE	WS: 9 G: 10 ENE	WS: 9 G: 10 ENE	WS: 8 G: 10 ENE	WS: 7 G: 9 ENE	WS: 6 G: 8 ENE	WS: 5 G: 7 ENE	WS: 5 G: 7 E	WS: 6 G: 8 E	WS: 6 G: 8 E	
Houston Pilots A - 1 & 2 Bravo	WS: 21 G: 25 N	WS: 22 G: 25 NNE	WS: 22 G: 25 NNE	WS: 20 G: 28 NE	WS: 20 G: 24 NE	WS: 16 G: 18 NE	WS: 16 G: 18 NE	WS: 15 G: 17 NNE	WS: 15 G: 16 NNE	WS: 16 G: 17 NNE	WS: 12 G: 13 NNE	WS: 11 G: 12 NNE	WS: 10 G: 10 NE	WS: 8 G: 9 ENE	WS: 6 G: 8 ENE	WS: 6 G: 8 ENE	WS: 7 G: 9 ENE	WS: 8 G: 9 ENE	WS: 8 G: 9 ENE	WS: 9 G: 10 ENE	WS: 10 G: 10 ENE	WS: 10 G: 10 ENE	WS: 11 G: 10 ENE	WS: 11 G: 10 ENE	WS: 11 G: 10 ENE	WS: 11 G: 10 ENE	WS: 11 G: 10 ENE	WS: 11 G: 10 ENE	WS: 10 G: 10 ENE	WS: 9 G: 10 ENE	WS: 9 G: 10 ENE	WS: 8 G: 10 ENE	WS: 7 G: 9 ENE	WS: 6 G: 8 ENE	WS: 5 G: 7 ENE	WS: 5 G: 7 E	WS: 6 G: 8 E	WS: 6 G: 8 E

See slides below for official thoughts on winds.

Houston Pilots Extended Range Visibility Report



Saturday, 3/12/22

Not anticipating fog Saturday AM with elevated northerly winds.

Confidence



Monday, 3/14/22

Keeping an eye for potential patchy reduced visibilities Monday AM, however, currently not anticipating fog with drier air still in place.

Confidence



Sunday, 3/13/22

Currently not anticipating fog Sunday AM with plenty of dry air in place.

Confidence



Daily Fog Chance

Saturday AM	Unlikely
Sunday AM	Unlikely
Monday AM	Unlikely

Forecast Discussion

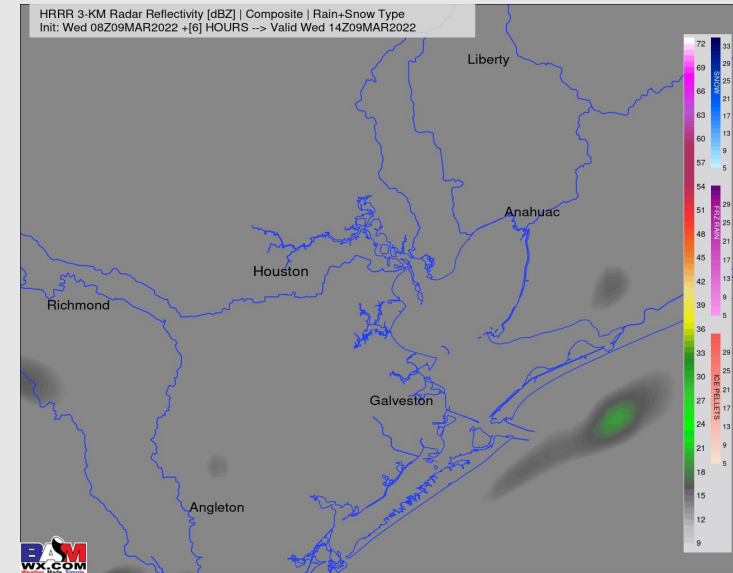
Precip: A ~10-20% chance of an isolated drizzle/light shower from the AM to the afternoon hours will be possible. The bulk of precip is anticipated to stay offshore. Anticipating much more dry time than not for our stations.

Wind: Sustained winds are 18-23 MPH out of the NNE with gusts 23-28 MPH will decrease the further into the day we go. By ~7 AM, sustained winds are 10-15 MPH out of the NE and 8-13 MPH out of the ENE by 2-3 PM for the rest of the day.

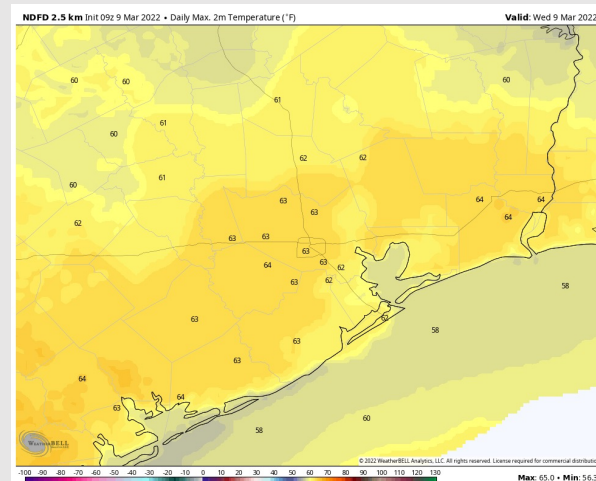
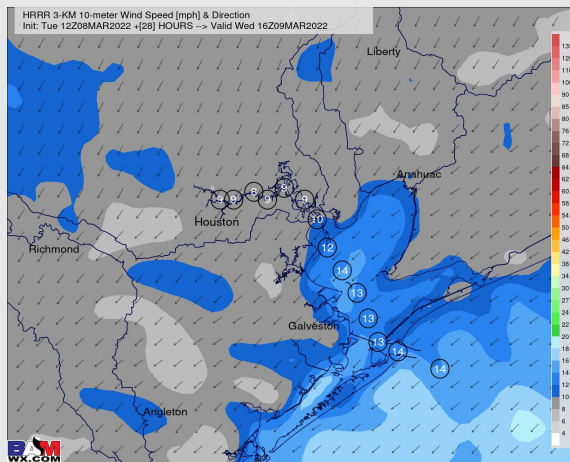
Temps: High temps Wednesday sit in the mid to upper 50s/ lower 60s F.

Visibility: Currently not anticipating fog today.

Precip Forecast: 8 AM CT



Wind Speed:
10 AM CT



High Temps
Today

Houston Pilots: Thu. 3/10/2022

Forecast Discussion

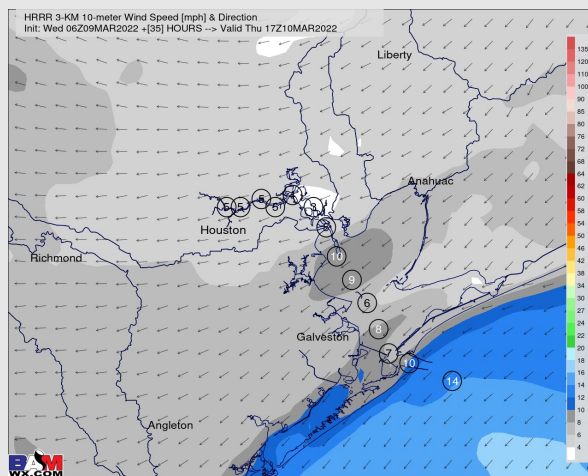
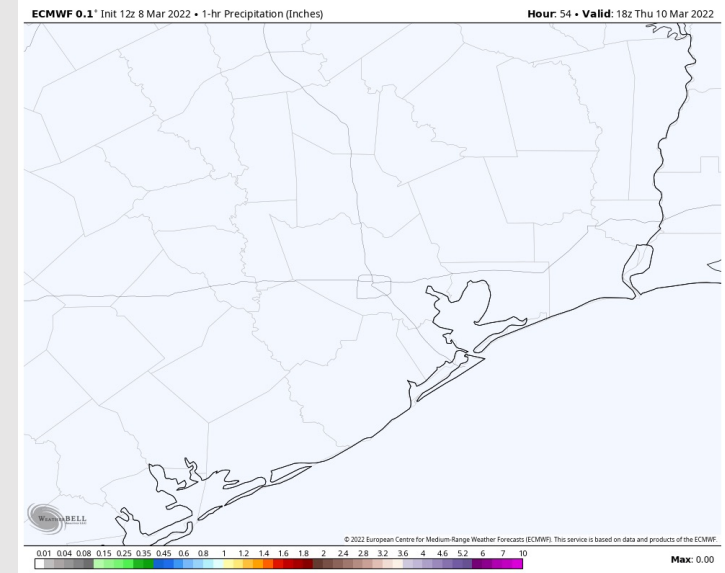
Precip: Anticipating dry conditions on Thursday.

Wind: Sustained winds are 5-10 MPH and veer from the NE to the east throughout Thursday AM. Sustained winds look to be closer to 8-13 MPH for the second half of the day and veer from the east to the SE. A few gusts 13-18 MPH possible in the afternoon.

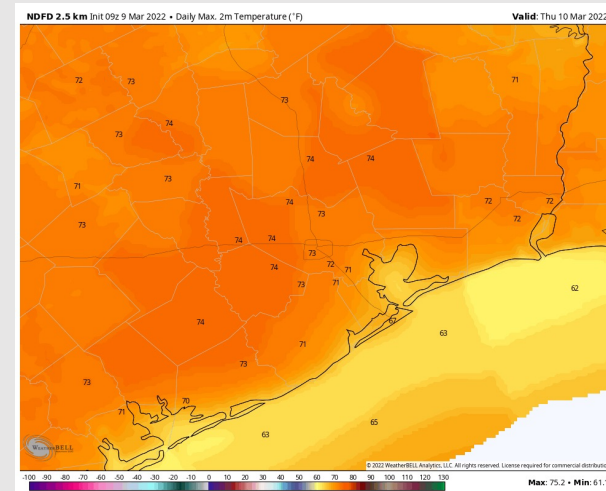
Temps: High temps on Thursday look to be in the upper 60s to low 70s F.

Visibility: Fog is currently not favored for our stations on Thursday AM.

Precip Forecast: 12 PM CT



Wind Speed
11 AM CT



High Temps
Thursday

Houston Pilots: *Fri. 3/11/2022*

Forecast Discussion

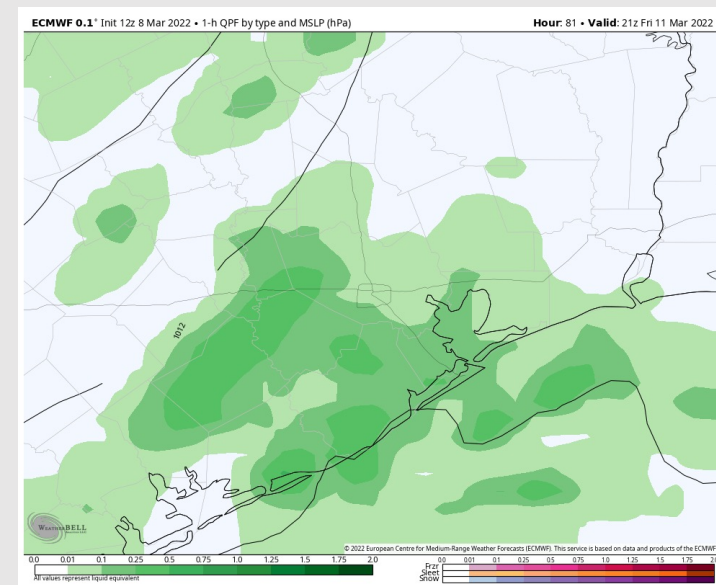
Precip: A few scattered showers looks to be possible Friday AM (just before daybreak) out ahead of the main wave of showers and thunderstorms. Anticipating the arrival of the main wave of showers/thunderstorms around 2-6 PM. Lightning and a heavier downpour will be possible with any cell. Precip starts to clear out as we get past sundown with a few showers still possible through ~9 PM.

Wind: Sustained winds are 5-10 MPH out of the ESE into the pre-dawn hours of Friday and slowly increase. Winds look to be 10-15 MPH out of the east by 7-8 AM through around sundown before the frontal wind shift. By 6-7 PM, sustained winds are 30-35 MPH out of the NNW with gusts 40-45+ MPH possible through midnight.

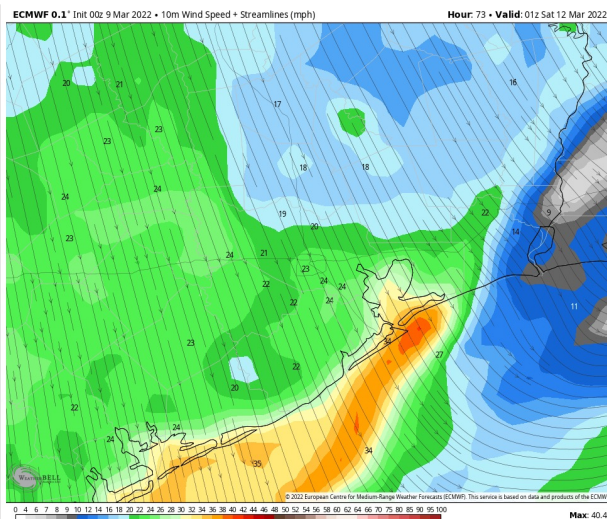
Temps: Highs on Friday are in the low to mid 60s F out ahead of the front.

Visibility: Patchy reduced visibility Friday morning looks to be possible, however, the signal for fog is weak. Keeping an eye on this in future updates.

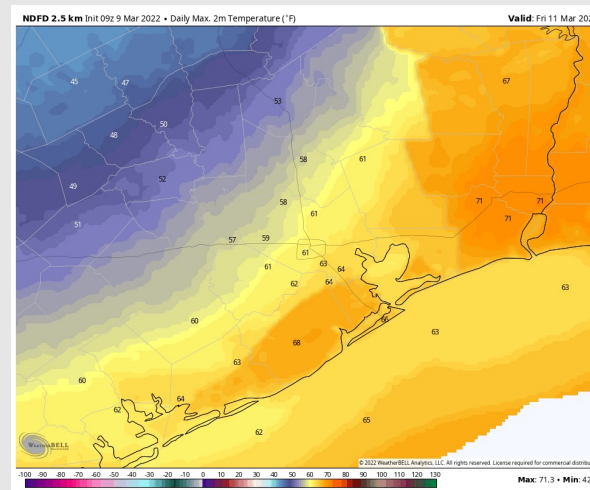
Precip Forecast: 3 PM CT



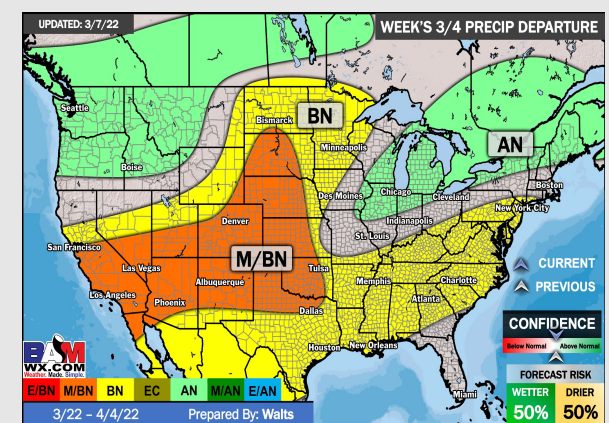
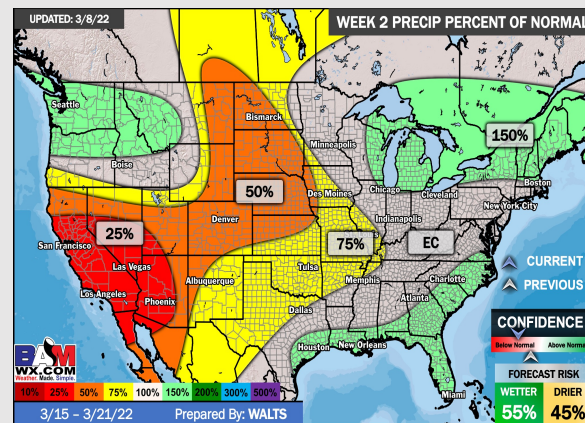
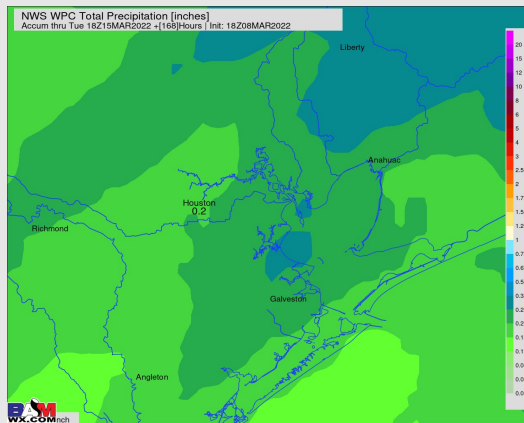
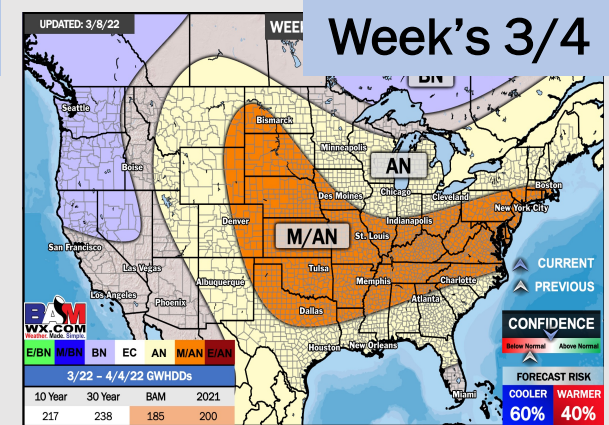
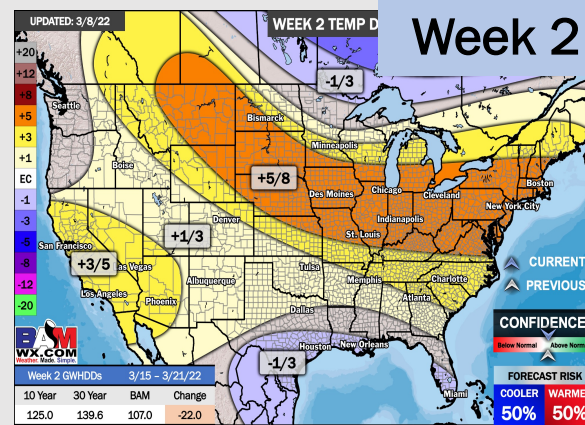
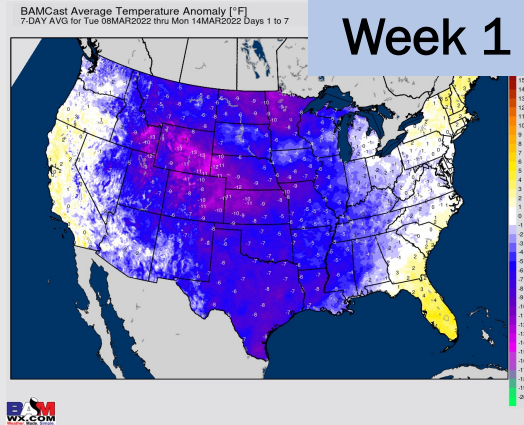
Wind Speed
8 PM CT



High Temps
Friday



Houston Pilots: 3/9/22



- Scattered showers today with the next shot at precip anticipated Friday with the next upcoming front.
- The week 2 timeframe is expected to have slightly below normal risks for temperatures and slightly above normal risks for precipitation.
- Right now, we are favoring above normal temperatures and below normal risks for precip for the weeks 3 / 4 timeframe.