

Houston Pilots Forecast Package



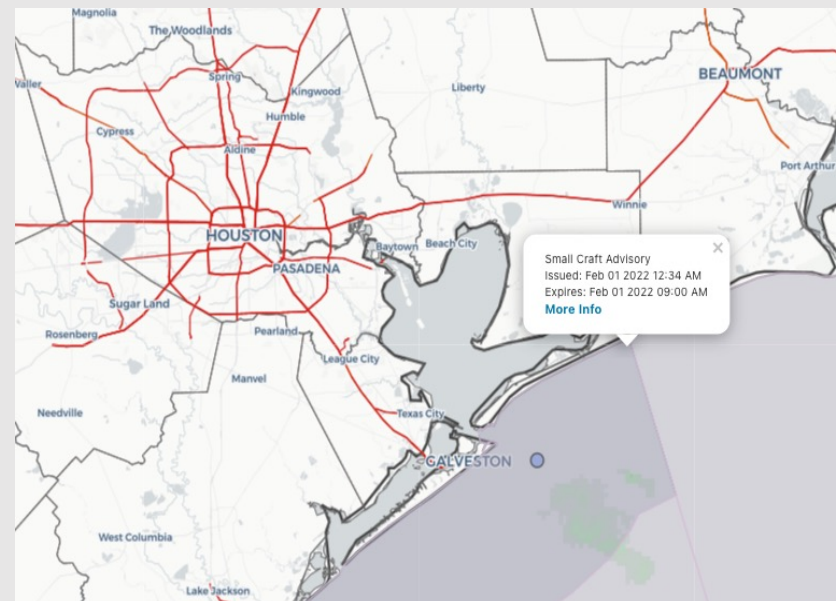
Updated: 5:10 AM CT

Tuesday, Feb 1, 2022

Forecasters: Cardona & Klare

Weather Headlines

- Fog chances are possible today, with widespread fog potential tonight into Wed AM.
- Precipitation chances continue over the next few days.
- Fog is not anticipated into the weekend.



Radar/ NWS Alerts: 5:10 AM CT



As always, please do not hesitate to reach out to us with any forecast questions via the chat option on the Weather Porthole or our on-call number, **(317)-560-8122** press 1 for forecast questions.

Houston Pilots Visibility Report



Time	02-01-2022 Tue 4am	02-01-2022 Tue 5am	02-01-2022 Tue 6am	02-01-2022 Tue 7am	02-01-2022 Tue 8am	02-01-2022 Tue 9am	02-01-2022 Tue 10am	02-01-2022 Tue 11am	02-01-2022 Tue 12pm	02-01-2022 Tue 1pm	02-01-2022 Tue 2pm	02-01-2022 Tue 3pm	02-01-2022 Tue 4pm	02-01-2022 Tue 5pm	02-01-2022 Tue 6pm	02-01-2022 Tue 7pm	02-01-2022 Tue 8pm	02-01-2022 Tue 9pm	02-01-2022 Tue 10pm	02-01-2022 Tue 11pm	02-02-2022 Wed 12am	02-02-2022 Wed 1am	02-02-2022 Wed 2am	02-02-2022 Wed 3am	02-02-2022 Wed 4am	02-02-2022 Wed 5am	02-02-2022 Wed 6am	02-02-2022 Wed 7am	02-02-2022 Wed 8am	02-02-2022 Wed 9am	02-02-2022 Wed 10am	02-02-2022 Wed 11am	02-02-2022 Wed 12pm	02-02-2022 Wed 1pm	02-02-2022 Wed 2pm	02-02-2022 Wed 3pm
Houston Pilots N - 610 Bridge	7.885	6.976	7.885	6.955	5.243	6.108	7.924	10.000	10.000	10.000	10.000	10.000	10.000	10.000	10.000	10.000	10.000	7.919	6.930	6.514	4.931	2.015	0.477	0.373	0.373	0.459	0.373	1.807	6.964	10.000	10.000	10.000	10.000	10.000	10.000	10.000
Houston Pilots M - Kinder 1	7.885	6.976	7.885	6.959	5.304	6.108	7.924	10.000	10.000	10.000	10.000	10.000	10.000	10.000	10.000	10.000	10.000	7.919	6.930	6.514	4.931	2.284	2.284	2.284	2.284	1.742	0.468	1.807	6.964	10.000	10.000	10.000	10.000	10.000	10.000	10.000
Houston Pilots L - Greens Bayou	7.885	6.955	7.885	6.955	5.243	5.921	7.924	10.000	10.000	10.000	10.000	10.000	10.000	10.000	10.000	10.000	10.000	7.919	6.918	6.355	4.931	4.814	4.814	4.814	4.814	3.146	0.598	1.380	6.952	10.000	10.000	10.000	10.000	10.000	10.000	10.000
Houston Pilots K - Shell Crude	8.096	7.232	8.363	6.959	5.304	5.995	7.924	10.000	10.000	10.000	10.000	10.000	10.000	10.000	10.000	10.000	10.000	7.919	6.914	5.963	4.931	8.033	8.033	7.811	8.033	3.653	0.598	0.345	6.948	10.000	10.000	10.000	10.000	10.000	10.000	10.000
Houston Pilots J - Lynchburg Ferries	8.096	7.232	9.025	6.970	4.902	5.995	7.924	10.000	10.000	10.000	10.000	10.000	10.000	10.000	10.000	10.000	10.000	7.919	6.885	5.931	4.931	8.033	8.033	7.811	8.033	3.653	0.598	0.239	6.920	10.000	10.000	10.000	10.000	10.000	10.000	10.000
Houston Pilots I - Exxon 3	10.000	10.000	10.000	6.970	4.902	6.931	9.038	10.000	10.000	10.000	10.000	10.000	10.000	10.000	10.000	10.000	10.000	7.919	6.885	5.931	4.582	8.033	8.033	7.811	8.033	3.653	0.598	0.239	6.920	10.000	10.000	10.000	10.000	10.000	10.000	10.000
Houston Pilots H - Morgans Point	10.000	10.000	10.000	6.970	4.902	6.931	9.038	10.000	10.000	10.000	10.000	10.000	10.000	10.000	10.000	10.000	10.000	7.919	6.885	5.931	5.011	8.033	8.033	7.922	8.033	3.653	0.598	0.239	6.920	10.000	10.000	10.000	10.000	10.000	10.000	10.000
Houston Pilots G - 75/76	10.000	10.000	10.000	7.885	4.902	6.931	9.038	10.000	10.000	10.000	10.000	10.000	10.000	10.000	10.000	10.000	10.000	7.919	6.885	5.931	6.999	8.033	8.033	7.922	8.033	3.653	0.239	0.239	6.920	10.000	10.000	10.000	10.000	10.000	10.000	10.000
Houston Pilots F - 63/64	10.000	10.000	10.000	7.885	5.480	6.931	9.038	10.000	10.000	10.000	10.000	10.000	10.000	10.000	10.000	7.924	6.885	5.725	4.612	4.612	5.557	8.033	8.033	8.033	7.922	8.033	3.653	0.239	0.239	6.920	9.644	10.000	9.642	10.000	10.000	9.643
Houston Pilots E - 51/52	10.000	10.000	10.000	7.885	6.890	7.492	9.038	10.000	10.000	10.000	10.000	10.000	10.000	10.000	9.471	4.902	4.897	4.697	4.697	4.697	6.424	8.033	8.033	8.033	7.922	7.922	2.145	0.239	0.239	4.087	6.920	8.722	7.919	8.721	8.721	7.664
Houston Pilots D - 37/38	10.000	10.000	10.000	7.885	6.890	7.885	9.499	10.000	10.000	10.000	10.000	10.000	10.000	10.000	5.936	5.714	4.897	4.697	5.487	5.876	7.426	8.033	8.033	7.461	6.999	6.913	0.874	0.239	0.239	4.543	6.920	7.919	7.697	7.697	7.697	6.920
Houston Pilots C - 25/26	10.000	10.000	10.000	7.885	6.890	8.999	10.000	10.000	10.000	10.000	10.000	10.000	9.888	7.836	7.924	6.890	6.113	7.253	7.677	7.677	7.999	8.033	8.022	5.955	6.999	4.990	0.239	0.239	0.239	4.775	6.920	7.919	7.546	6.885	6.885	6.920
Houston Pilots B - 11/12	10.000	10.000	10.000	8.999	6.890	8.999	10.000	10.000	10.000	10.000	10.000	10.000	8.447	7.924	7.924	9.416	7.664	7.999	7.999	7.999	7.999	8.033	8.033	5.011	5.965	1.839	0.239	0.239	0.239	4.931	6.920	7.919	7.546	6.885	6.885	6.920
Houston Pilots A - 1 & 2 Bravo	10.000	10.000	10.000	8.999	6.890	8.999	10.000	10.000	10.000	10.000	10.000	10.000	7.924	7.924	7.924	10.000	7.999	9.033	9.033	8.731	7.999	8.033	8.033	4.448	1.990	0.215	0.179	0.219	0.219	3.735	5.225	6.005	5.290	5.190	5.190	5.695

Data is currently struggling to see the fog threat today and tonight. See slides below for more info.

Houston Pilots Extended Range Visibility Report



Friday, 2/4/22

With elevated winds out of the north continuing, not anticipating fog on Friday.



Sunday, 2/6/22

Not anticipating fog for Sunday.



Saturday, 2/5/22

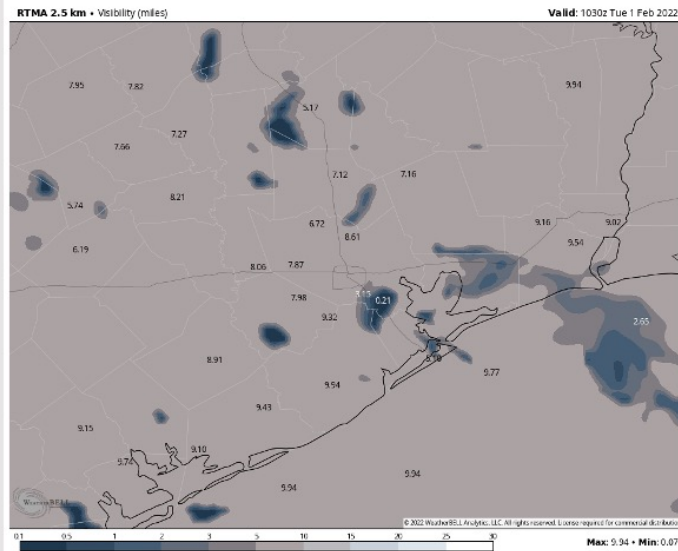
Elevated winds out of the NE continue, currently not anticipating fog Sat AM.



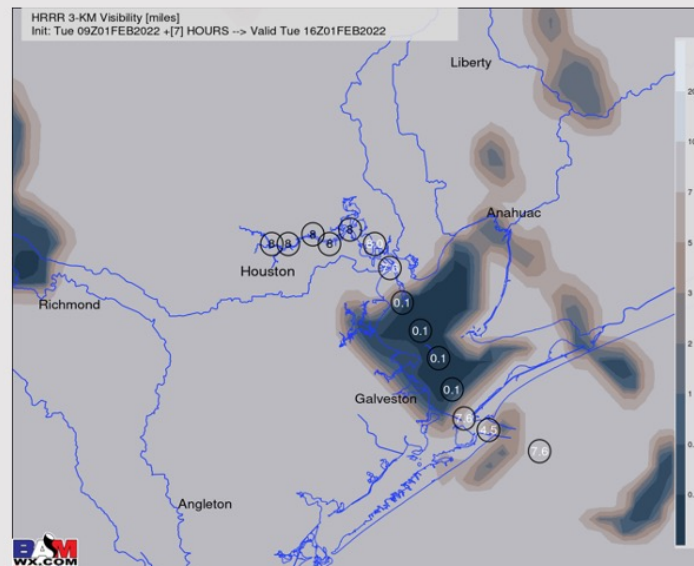
Daily Fog Chance	
Friday AM	Unlikely
Saturday AM	Unlikely
Sunday AM	Unlikely

Houston Pilots Visibility Report

CURRENT Visibility (miles)



10 AM CT TUE Visibility (miles)



Confidence

**Above
Normal**

**Below
Normal**

Reduced Visibility Threat

Current ~ 12 PM TUE

**Low to
Medium**

- Patchy mist/fog will continue to be possible this morning from the boarding station through Morgan's Point through around the 11 AM – Noon timeframe.
- Low confidence still exists on how long patchy fog/mist can linger today into the PM, but currently favoring most if not all patchy reduced visibilities to be clear by that 11AM – Noon timeframe.
- Not anticipating to be a dense fog risk nor a widespread risk for our stations this morning.
- Sea fog looks to be possible again beginning this evening, continuing into the night and Wednesday morning. See slide below for more info.

Houston Pilots: Tue. 2/1/2022

Forecast Discussion

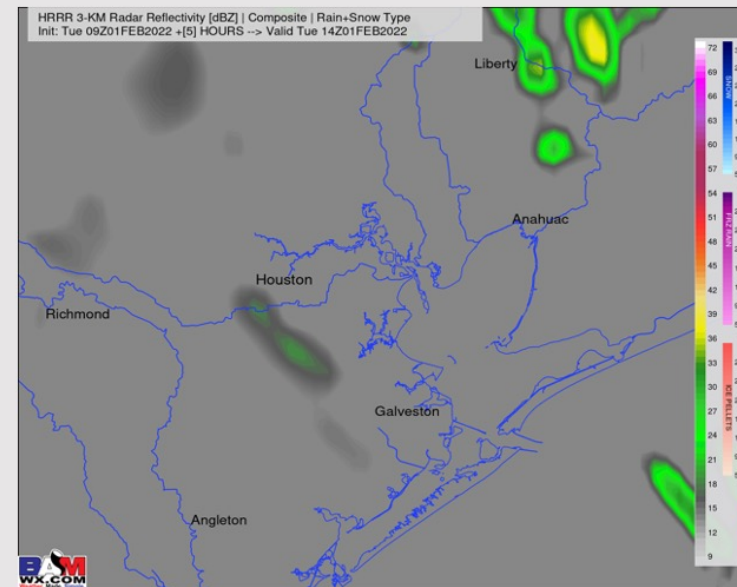
Precip: A few spotty showers lingering behind this morning will be possible (10-20%), however, anticipating overall drier conditions for our stations today.

Wind: Sustained winds continue 15-20 MPH out of the ESE through ~ 6-7 AM with gusts 20-25 MPH at the boarding station. After this period, winds calm to 5-10 MPH with a few gusts 10-15 MPH at the boarding station through most of the day. Around 3-4 PM, winds start to veer more out of the S/SSE. Around 9-10 PM tonight, winds look to pick up some, at 8-13 MPH sustained out of the south.

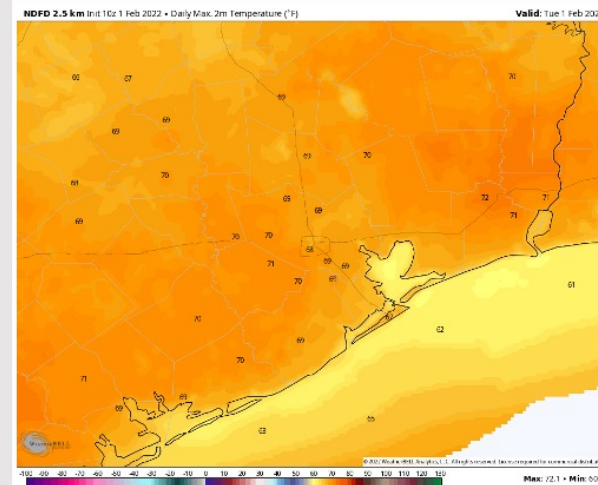
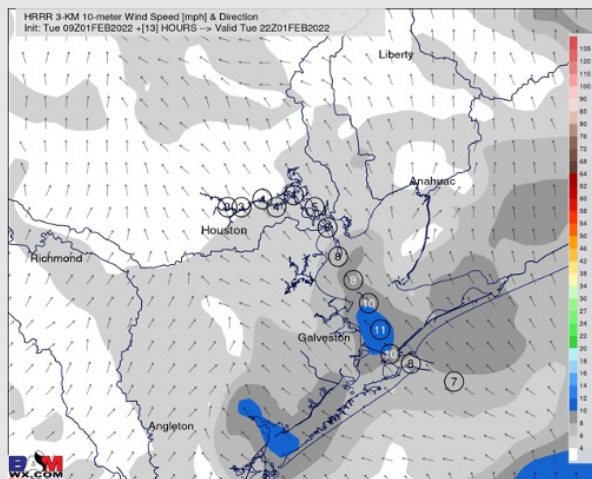
Temps: Highs today look to sit in the mid to upper 60s F.

Visibility: See slide above for more info on the patchy reduced visibility threat this morning.

Precip Forecast: 8 AM CT



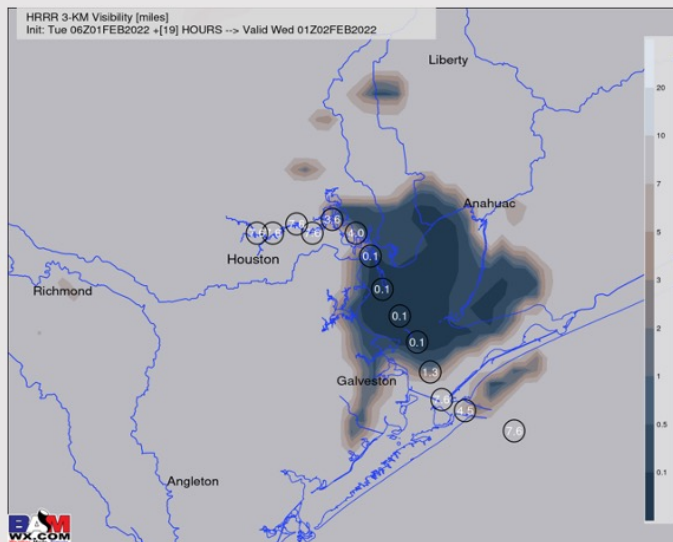
Wind Speed:
4 PM CT



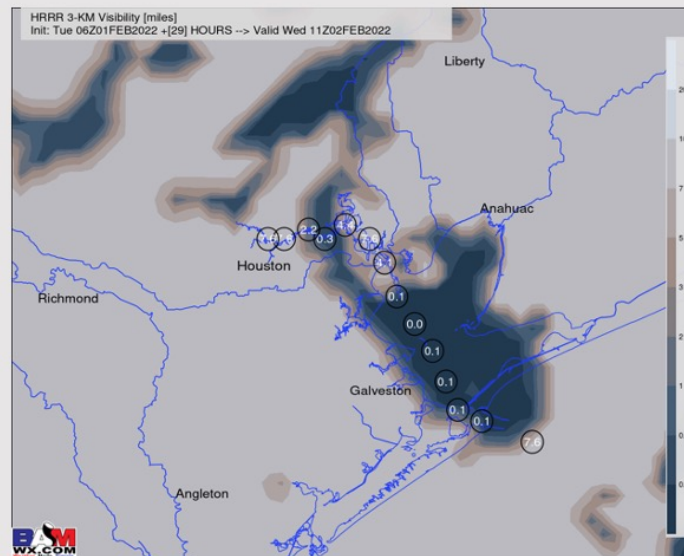
High Temps
Today

Houston Pilots Visibility Report

7 PM CT TUE Visibility (miles)



5 AM CT WED Visibility (miles)



Confidence

**Above
Normal**

**Below
Normal**

Fog Threat

4-5 PM TUE ~ 11 AM
WED

**Medium-
High**

- Uncertainty still exists on exact timing when reduced visibility/ sea fog can begin this evening/night. We currently favor patchy reduced visibility/sea fog to be possible around the boarding station beginning as early as 4-5 PM.
- Sea fog is anticipated to expand in coverage further north as we go further into the evening and night hours as winds veer more out of the south.
- Patchy sea fog looks to be possible throughout all of our stations as we go into the night/overnight and into Wednesday morning, however, the bulk of the dense fog (<1 mi visibility) looks to be from the 25/26 station and points north through around 3-4 AM. After this period, dense sea fog looks to become more widespread through all our stations as we go further into Wed AM.
- Lower confidence on exact timing when fog can exit Wednesday, but currently we favor most widespread dense fog to start clearing/lifting by around ~ 11 AM Wed. Details will be fine tuned in the upcoming updates.

Houston Pilots: *Sun. 1/30/2022*

Forecast Discussion

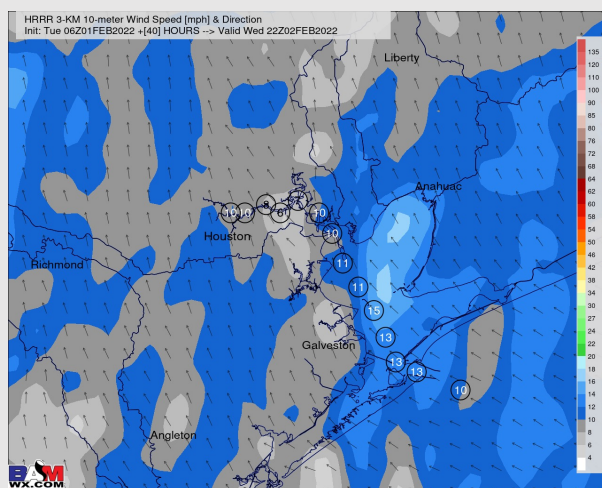
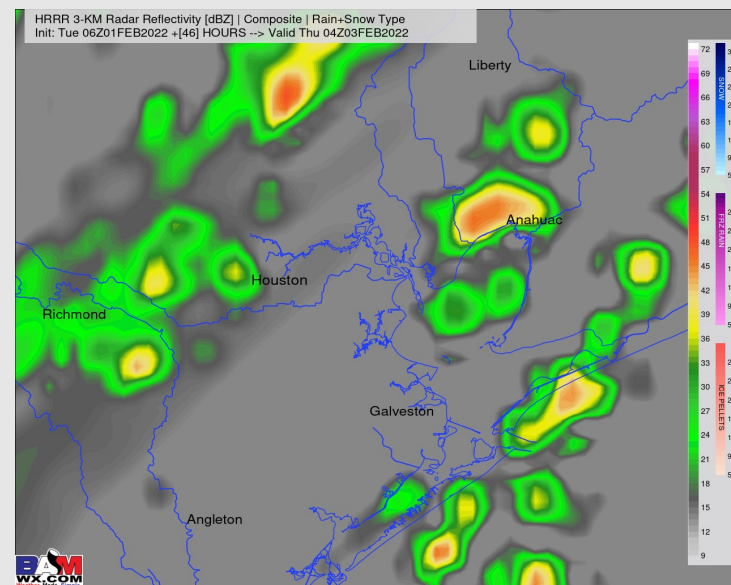
Precip: Anticipating dry conditions for the rest of Wed AM. Isolated to scattered showers look to start in the mid-PM hours ahead of the front (20-30%). Coverage increases in the evening hours ~8-9PM. The main line of showers/thunderstorms is anticipated after midnight.

Wind: Sustained winds look to be 5–10 MPH out of the SE, veering ENE ~6AM through the morning. Winds veer ~10-11AM out of the SE. ~3PM, winds begin to pick up to 10-15 MPH, with gusts up to 22 MPH being possible. At ~9-10PM, winds veer again to be out of the SW.

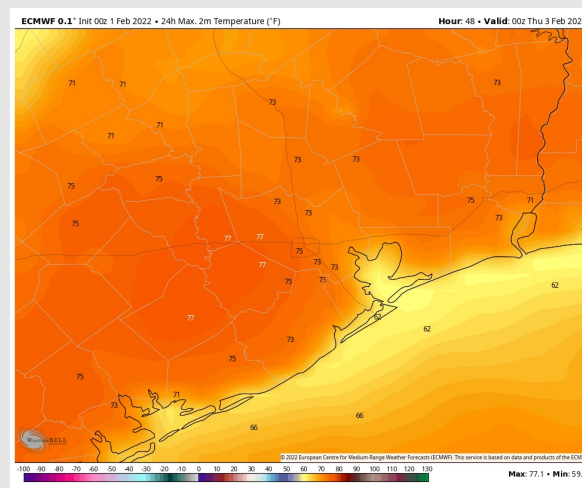
Temps: Highs anticipated to sit in the low to mid 60s F today.

Visibility: Light winds allow for fog potential Wed AM. See slide above for more details.

Precip Forecast: 10 PM CT



Wind Speed
4 PM CT



High Temps
Wed

Houston Pilots: *Thur. 2/3/2022*

Forecast Discussion

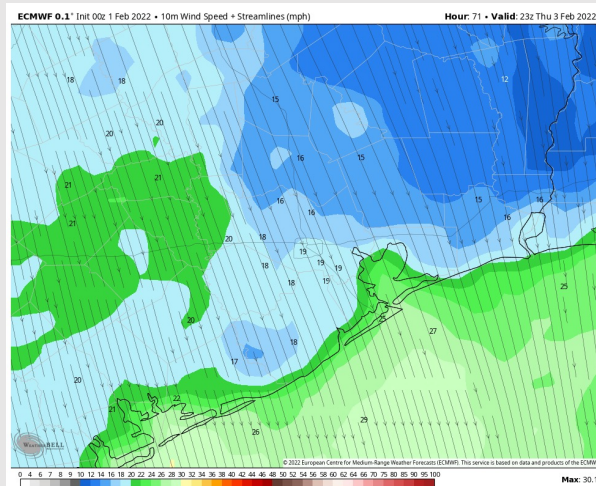
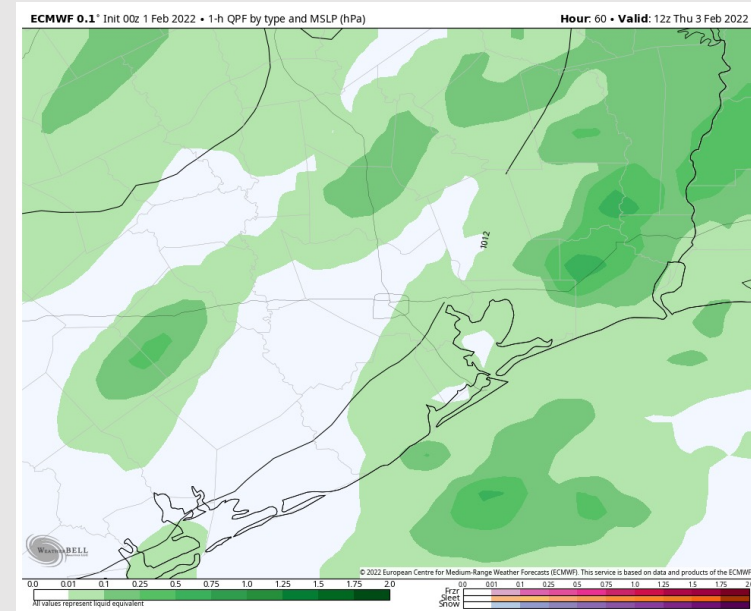
Precip: Showers continue into Thu. AM, with the bulk exiting ~mid-morning and scattered/isolated shower chances continue until ~mid-afternoon. Mostly dry conditions are expected until the overnight hours with some returning rain chances being possible.

Wind: Sustained winds out of the SSW at 15-20 MPH will shift out of the NW upon the passing of the front ~2-4AM. Winds are expected to pick up ~8AM at 18-23 MPH, with gusts up to 30 MPH at the boarding station possible. Winds pick up again ~1-2PM to 20-30 MPH, with gusts up to 36 MPH being possible at the boarding station. These winds are expected to be sustained through midnight.

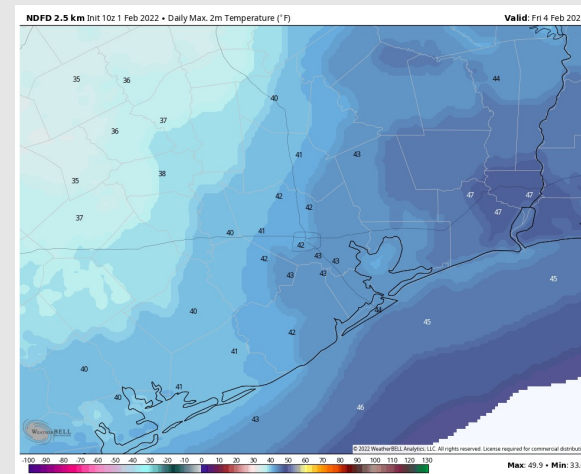
Temps: Highs Thursday look to sit in the low to mid 40s.

Visibility: Currently not anticipating fog for our stations, however reduced visibilities will be possible with rain showers.

Precip Forecast: 11 PM CT



Wind Speed
5 PM CT



High Temps
Thu