

Houston Pilots Forecast Package



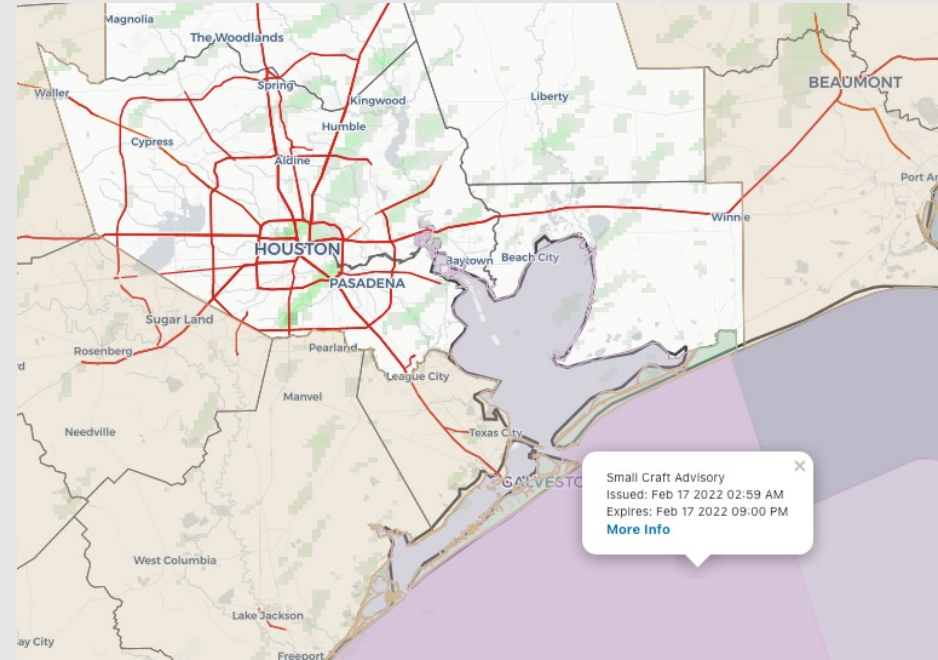
Updated: 5:00 AM CT

Wednesday, February 16, 2022

Forecaster: Vince Bryan

Weather Headlines

- Reduced/limited visibility will continue to be possible this morning before a wind shift that will usher that threat out of the area.
- Winds will continue to stay elevated through mid-day Friday before weakening.
- Expecting drier and quieter conditions for the weekend.
- Worth keeping an eye on early next week for another potential setup for fog development, more details to come over the weekend.



Radar/ NWS Alerts: 5:00 AM CT



As always, please do not hesitate to reach out to us with any forecast questions via the chat option on the Weather Porthole or our on-call number, **(317)-560-8122** press 1 for forecast questions.

Houston Pilots Visibility Report



Time	02-17-2022 Thu 4am	02-17-2022 Thu 5am	02-17-2022 Thu 6am	02-17-2022 Thu 7am	02-17-2022 Thu 8am	02-17-2022 Thu 9am	02-17-2022 Thu 10am	02-17-2022 Thu 11am	02-17-2022 Thu 12pm	02-17-2022 Thu 1pm	02-17-2022 Thu 2pm	02-17-2022 Thu 3pm	02-17-2022 Thu 4pm	02-17-2022 Thu 5pm	02-17-2022 Thu 6pm	02-17-2022 Thu 7pm	02-17-2022 Thu 8pm	02-17-2022 Thu 9pm	02-17-2022 Thu 10pm	02-17-2022 Thu 11pm	02-18-2022 Fri 12am	02-18-2022 Fri 1am	02-18-2022 Fri 2am	02-18-2022 Fri 3am	02-18-2022 Fri 4am	02-18-2022 Fri 5am	02-18-2022 Fri 6am	02-18-2022 Fri 7am	02-18-2022 Fri 8am	02-18-2022 Fri 9am	02-18-2022 Fri 10am	02-18-2022 Fri 11am	02-18-2022 Fri 12pm	02-18-2022 Fri 1pm	02-18-2022 Fri 2pm	02-18-2022 Fri 3pm	
Houston Pilots N - 610 Bridge	4.603	4.905	4.905	4.905	4.837	5.682	8.051	10.000	10.000	10.000	10.000	10.000	10.000	10.000	10.000	10.000	10.000	10.000	10.000	10.000	10.000	10.000	10.000	10.000	10.000	10.000	10.000	10.000	10.000	10.000	10.000	10.000	10.000	10.000	10.000	10.000	10.000
Houston Pilots M - Kinder 1	4.676	4.909	4.917	4.909	4.850	5.716	8.017	10.000	10.000	10.000	10.000	10.000	10.000	10.000	10.000	10.000	10.000	10.000	10.000	10.000	10.000	10.000	10.000	10.000	10.000	10.000	10.000	10.000	10.000	10.000	10.000	10.000	10.000	10.000	10.000	10.000	10.000
Houston Pilots L - Greens Bayou	4.818	4.906	4.915	4.906	4.851	5.721	7.930	10.000	10.000	10.000	10.000	10.000	10.000	10.000	10.000	10.000	10.000	10.000	10.000	10.000	10.000	10.000	10.000	10.000	10.000	10.000	10.000	10.000	10.000	10.000	10.000	10.000	10.000	10.000	10.000	10.000	10.000
Houston Pilots K - Shell Crude	4.883	4.911	4.961	4.911	4.895	5.838	7.951	10.000	10.000	10.000	10.000	10.000	10.000	10.000	10.000	10.000	10.000	10.000	10.000	10.000	10.000	10.000	10.000	10.000	10.000	10.000	10.000	10.000	10.000	10.000	10.000	10.000	10.000	10.000	10.000	10.000	10.000
Houston Pilots J - Lynchburg Ferries	4.901	4.901	4.915	4.902	4.899	5.790	7.924	10.000	10.000	10.000	10.000	10.000	10.000	10.000	10.000	10.000	10.000	10.000	10.000	10.000	10.000	10.000	10.000	10.000	10.000	10.000	10.000	10.000	10.000	10.000	10.000	10.000	10.000	10.000	10.000	10.000	10.000
Houston Pilots I - Exxon 3	4.694	4.778	4.836	4.863	4.902	5.844	7.924	10.000	10.000	10.000	10.000	10.000	10.000	10.000	10.000	10.000	10.000	10.000	10.000	10.000	10.000	10.000	10.000	10.000	10.000	10.000	10.000	10.000	10.000	10.000	10.000	10.000	10.000	10.000	10.000	10.000	10.000
Houston Pilots H - Morgans Point	4.355	4.567	4.680	4.604	4.645	5.652	7.851	9.922	10.000	10.000	10.000	10.000	10.000	10.000	10.000	10.000	10.000	10.000	10.000	10.000	10.000	10.000	10.000	10.000	10.000	10.000	10.000	10.000	10.000	10.000	10.000	10.000	10.000	10.000	10.000	10.000	10.000
Houston Pilots G - 75/76	4.092	4.521	4.705	4.254	4.555	5.438	7.875	9.709	10.000	10.000	10.000	10.000	10.000	10.000	10.000	10.000	10.000	10.000	10.000	10.000	10.000	10.000	10.000	10.000	10.000	10.000	10.000	10.000	10.000	10.000	10.000	10.000	10.000	10.000	10.000	10.000	10.000
Houston Pilots F - 63/64	4.038	4.788	5.002	4.203	4.592	5.320	7.862	9.405	10.000	10.000	10.000	10.000	10.000	10.000	10.000	10.000	10.000	10.000	10.000	10.000	10.000	10.000	10.000	10.000	10.000	10.000	10.000	10.000	10.000	10.000	10.000	10.000	10.000	10.000	10.000	10.000	10.000
Houston Pilots E - 51/52	4.261	5.428	5.604	4.546	4.760	5.230	7.862	9.065	10.000	10.000	10.000	10.000	10.000	10.000	10.000	10.000	10.000	10.000	10.000	10.000	10.000	10.000	10.000	10.000	10.000	10.000	10.000	10.000	10.000	10.000	10.000	10.000	10.000	10.000	10.000	10.000	10.000
Houston Pilots D - 37/38	4.770	6.056	6.496	5.065	4.775	5.096	7.852	8.644	10.000	10.000	10.000	10.000	10.000	10.000	10.000	10.000	10.000	10.000	10.000	10.000	10.000	10.000	10.000	10.000	10.000	10.000	10.000	10.000	10.000	10.000	10.000	10.000	10.000	10.000	10.000	10.000	10.000
Houston Pilots C - 25/26	5.081	5.976	7.062	5.020	4.382	4.495	7.577	7.013	9.664	10.000	9.599	9.858	10.000	10.000	10.000	10.000	10.000	10.000	10.000	10.000	10.000	10.000	10.000	10.000	10.000	10.000	10.000	10.000	10.000	10.000	10.000	10.000	10.000	10.000	10.000	10.000	10.000
Houston Pilots B - 11/12	5.006	5.385	7.139	4.444	3.863	3.506	6.970	4.995	8.128	9.837	8.986	9.446	10.000	10.000	10.000	10.000	10.000	10.000	10.000	10.000	10.000	10.000	10.000	10.000	10.000	10.000	10.000	10.000	10.000	10.000	10.000	10.000	10.000	10.000	10.000	10.000	10.000
Houston Pilots A - 1 & 2 Bravo	4.890	4.219	7.436	3.712	2.926	1.742	5.532	1.619	3.641	7.273	7.542	8.453	10.000	10.000	10.000	10.000	10.000	10.000	10.000	10.000	10.000	10.000	10.000	10.000	10.000	10.000	10.000	10.000	10.000	10.000	10.000	10.000	10.000	10.000	10.000	10.000	10.000

More details on following slides for visibility risks this AM.

Houston Pilots Extended Range Visibility Report



Sunday, 2/20/22

Currently not favoring fog Sun AM for our stations.



Tuesday, 2/22/22

Tuesday also features the threat for fog at this distance as we will continue to have a SE wind and ample moisture.



Monday, 2/21/22

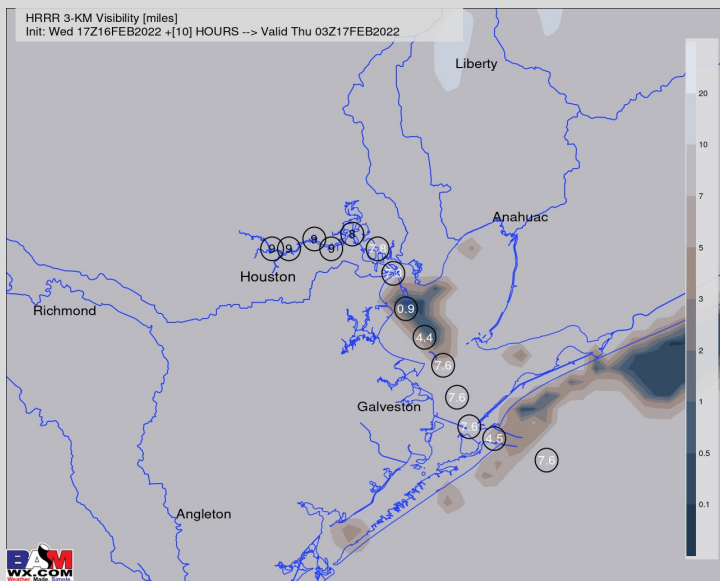
Monday at this distance would be a period to watch for fog potential as low level flow + moisture working in. More to come in future updates.



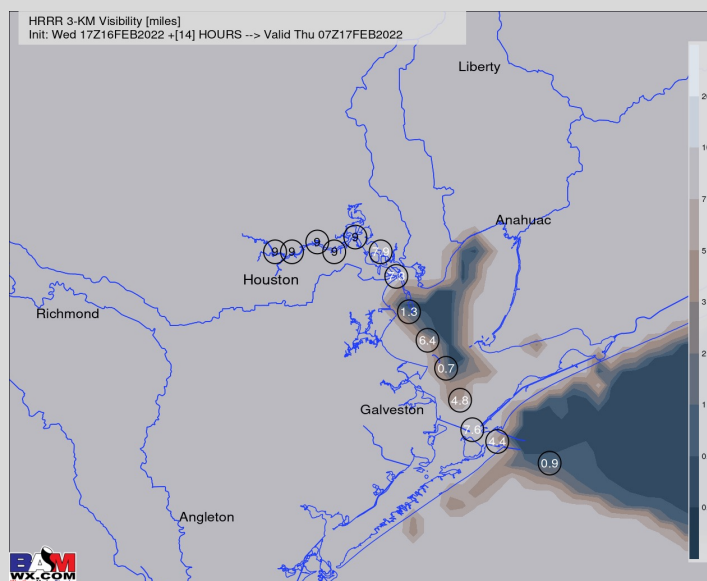
Daily Fog Chance	
Sunday AM	Unlikely
Monday AM	Possible
Tuesday AM	Possible

Houston Pilots Visibility Report

9 PM WED Visibility (miles)



3 AM THU Visibility (miles)



Confidence

**Above
Normal**

**Below
Normal**

Fog Threat

Current ~ Noon

Medium

- While the winds to this point have stayed elevated enough in spots to keep reduced visibility rather patchy, we continue to think the fog/reduced visibility risk will be possible through the morning hours.
- Bands of mist will continue to work through our stations as the SE wind is lifting in plenty of moisture. Even if any fog stays on the patchy side, limited visibilities from this mist/drizzle will continue to be possible for all stations.
- Improvements to visibilities likely do not happen until closer to the 9-11 AM hours for the N half of stations, 10 AM – Noon for the S half of stations when winds turn more out of the North.

Houston Pilots: *Thu. 2/17/2022*

Forecast Discussion

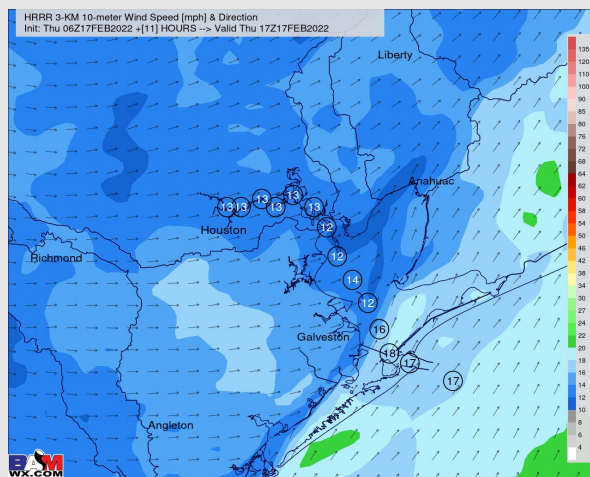
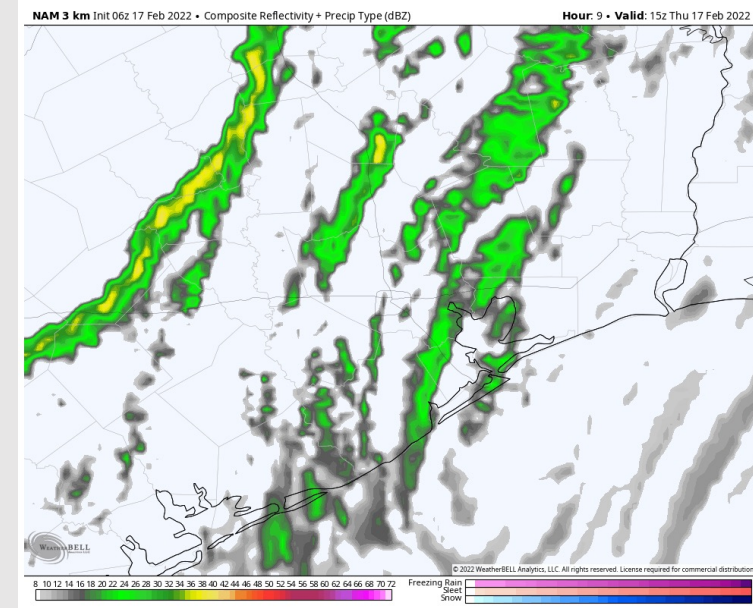
Precip: Anticipating the main line of showers with the front to arrive in the 7AM – 10 AM timeframe and continue through late morning – noon. Lightning will be possible, but severe weather likely stays to the north. Anticipating drier conditions for the PM hours behind the front.

Wind: Calmer winds this morning at the boarding station will eventually give way to winds of 13-18 MPH with gusts 18-23 MPH. Winds veer out of the SW/WSW by ~10 AM. After ~4 PM, sustained winds are 15-20 MPH out of the WNW with gusts 20-25 MPH. After sundown, winds look to pick up quickly again to 23-28 MPH sustained at the boarding station with gusts 30-40 MPH possible into the overnight from the N.

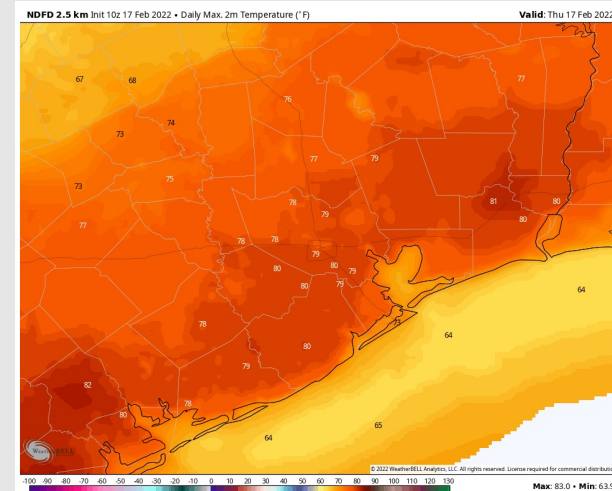
Temps: High temps look to sit in the upper 60s to low 70s F on Wed (warmer inland, cooler closer to boarding station).

Visibility: See slide above for more details.

Precip Forecast: 9 AM CT



Wind Speed
11 AM CT



High Temps

Houston Pilots: *Fri. 2/18/2022*

Forecast Discussion

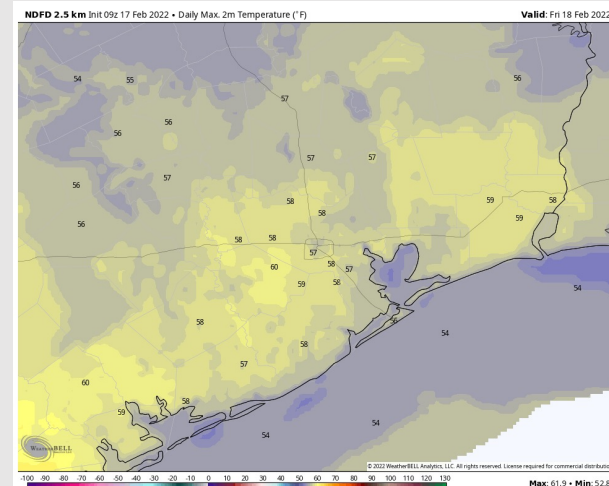
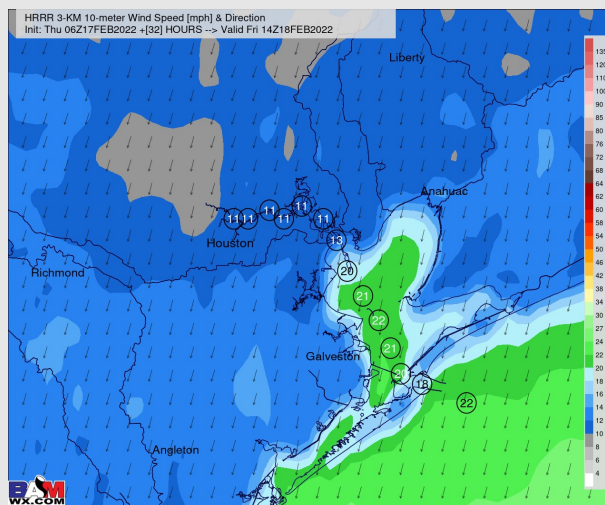
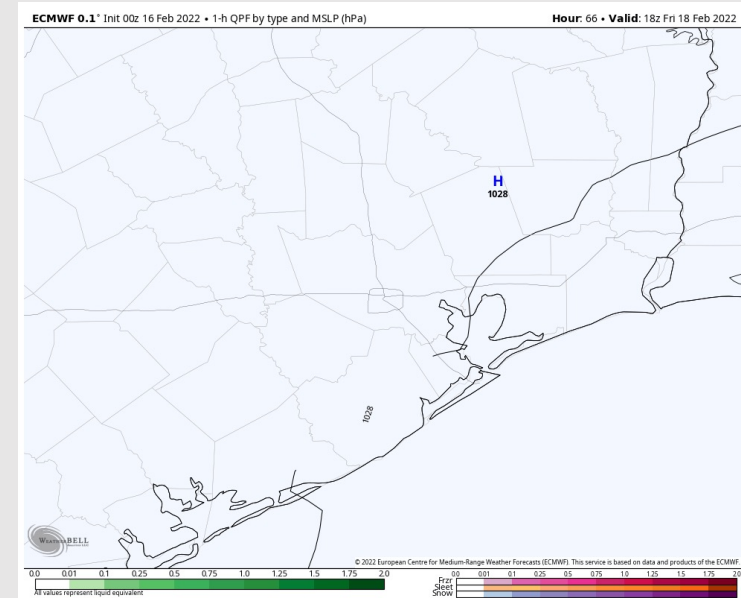
Precip: No precip expected Friday.

Wind: Winds will be out of the NNE on Friday. Through mid-day 18-23 MPH sustained with gusts to 30 MPH possible. Afternoon hours taper a bit to 8-13 MPH sustained at the boarding station with gusts quickly diminishing to ~15 MPH possible.

Temps: Behind the front, highs look to top out in the mid 50s.

Visibility: No visibility concerns expected Friday.

Precip Forecast: 12 PM CT



High Temps
Friday

Houston Pilots: Sat. 2/19/2022

Forecast Discussion

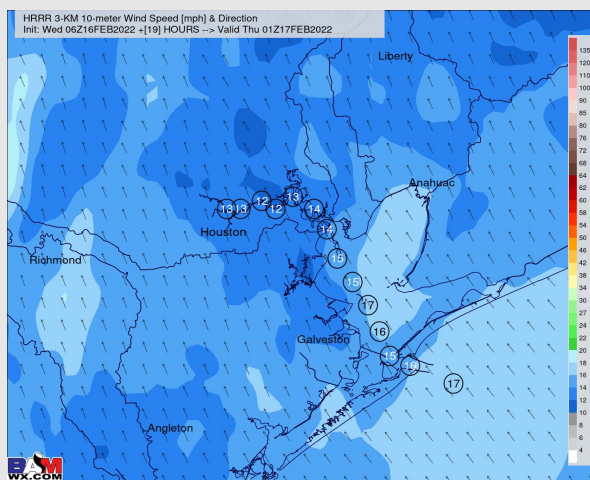
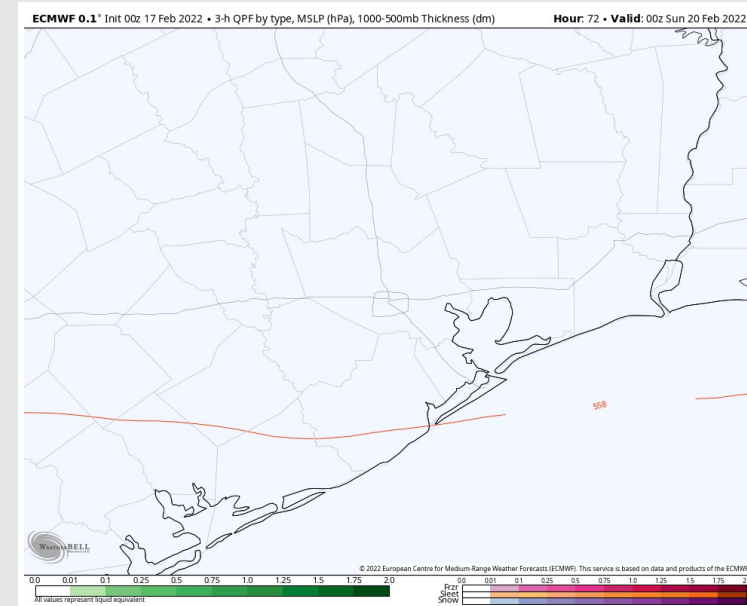
Precip: Saturday is favored to be a dry day at this distance.

Wind: Saturday likely starts out with a NE wind of 8-13 MPH with gusts to 15 MPH. Winds change more out of the E by mid day and then SE by sundown.

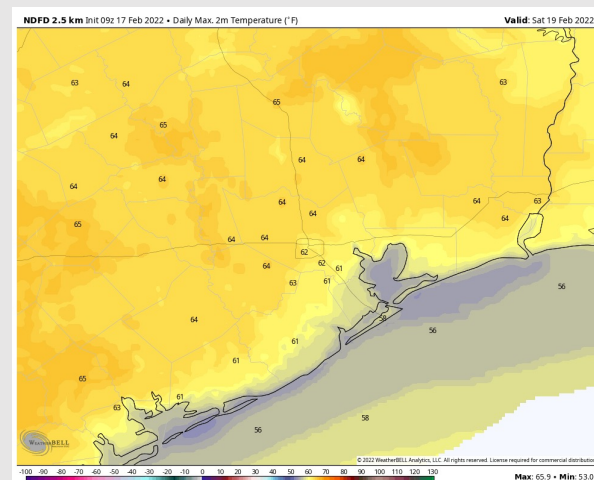
Temps: Saturday's temps look to top out near 60F.

Visibility: Check slide above for more info on visibility.

Precip Forecast: 7 AM CT



Wind Speed:
8 PM CT

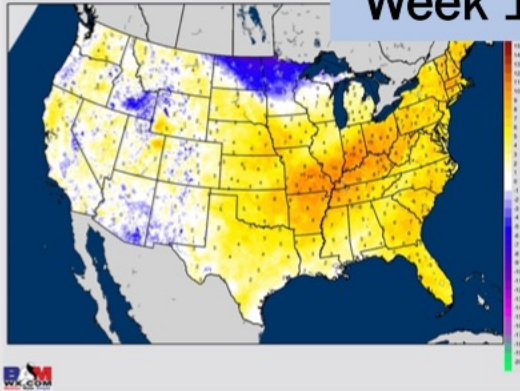


High Temps
Saturday

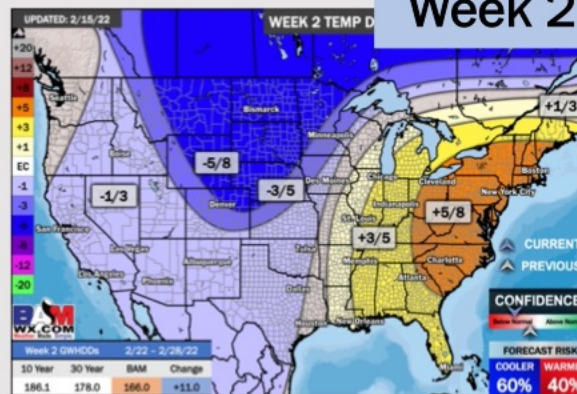
Houston Pilots: 2/15/22

BAMcast Average Temperature Anomaly [°F]
7-DAY AVG for Tue 15FEB2022 thru Mon 21FEB2022 Days 1 to 7

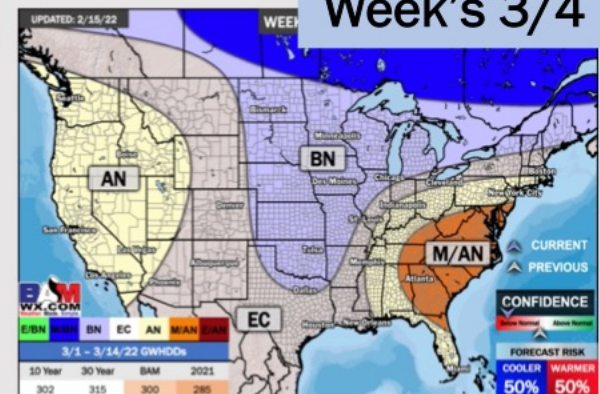
Week 1



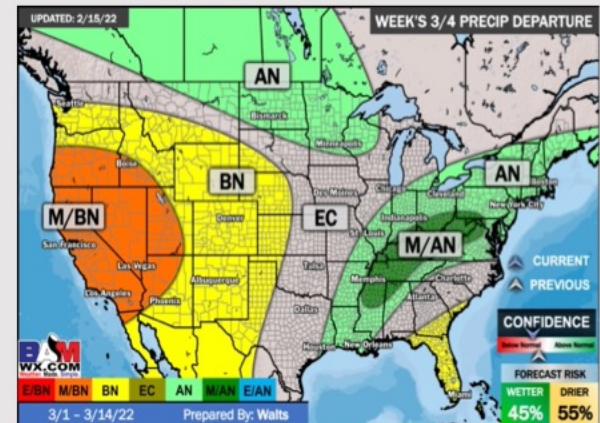
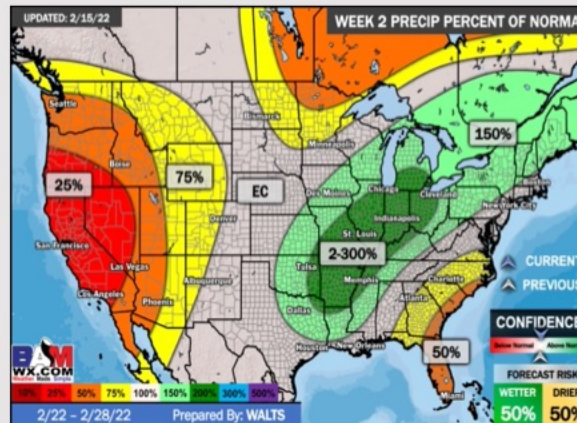
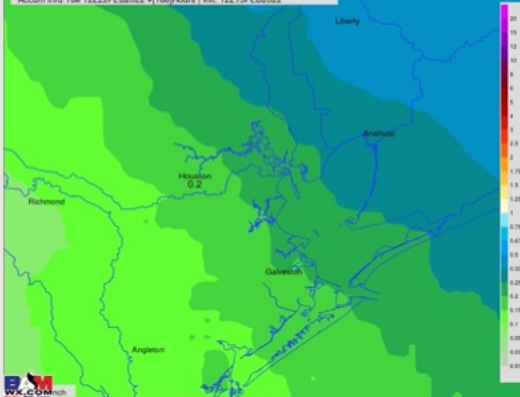
Week 2



Week's 3/4



NWS WPC Total Precipitation [inches]
Accum thru Tue 12Z22FEB2022 -1160Hours 1 Int: 12Z15FEB2022



- Isolated to scattered chances for a few showers will be possible Today – Wed out ahead of the front. Anticipating the main line of precip with the front Thu AM. Temps average out slightly above normal this week.
- The week 2 timeframe is expected to have near normal risks for temperatures and near normal to slightly above normal risks for precip.
- Right now, we are favoring near normal to slightly below normal temperatures and near normal to slightly above normal risks for precip for the weeks 3-4 timeframe.