

Houston Pilots Forecast Package



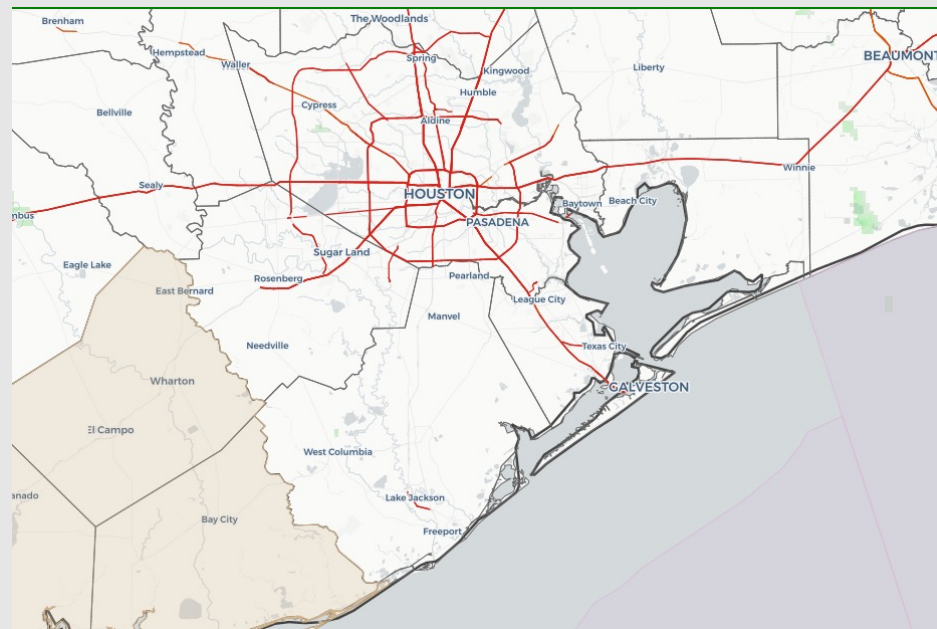
Updated: 1:00 PM CT

Wednesday, February 16, 2022

Forecaster: Vince Bryan

Weather Headlines

- Eyeing a fog/ reduced visibility threat into the evening hours as latest data is increasing chances of seeing fog out ahead of the front that works through tomorrow. More details on slides below.
- Winds start to pick up tonight and continue elevated throughout Friday AM with gusts of 30+ MPH possible at times.
- Expecting drier and quieter conditions for the weekend.



Radar/ NWS Alerts: 1:00 PM CT



As always, please do not hesitate to reach out to us with any forecast questions via the chat option on the Weather Porthole or our on-call number, **(317)-560-8122** press 1 for forecast questions.

Houston Pilots Visibility Report



Time	02-16-2022 Wed 12pm	02-16-2022 Wed 1pm	02-16-2022 Wed 2pm	02-16-2022 Wed 3pm	02-16-2022 Wed 4pm	02-16-2022 Wed 5pm	02-16-2022 Wed 6pm	02-16-2022 Wed 7pm	02-16-2022 Wed 8pm	02-16-2022 Wed 9pm	02-16-2022 Wed 10pm	02-16-2022 Wed 11pm	02-17-2022 Thu 12am	02-17-2022 Thu 1am	02-17-2022 Thu 2am	02-17-2022 Thu 3am	02-17-2022 Thu 4am	02-17-2022 Thu 5am	02-17-2022 Thu 6am	02-17-2022 Thu 7am	02-17-2022 Thu 8am	02-17-2022 Thu 9am	02-17-2022 Thu 10am	02-17-2022 Thu 11am	02-17-2022 Thu 12pm	02-17-2022 Thu 1pm	02-17-2022 Thu 2pm	02-17-2022 Thu 3pm	02-17-2022 Thu 4pm	02-17-2022 Thu 5pm	02-17-2022 Thu 6pm	02-17-2022 Thu 7pm	02-17-2022 Thu 8pm	02-17-2022 Thu 9pm	02-17-2022 Thu 10pm	02-17-2022 Thu 11pm
Houston Pilots N - 610 Bridge	9.567	9.663	9.878	9.698	9.608	9.604	9.784	10.000	9.976	9.802	9.504	9.542	9.456	9.313	9.533	9.307	9.527	8.552	8.270	7.016	6.641	5.731	6.871	9.765	10.000	10.000	10.000	10.000	10.000	10.000	10.000	10.000	10.000	10.000	10.000	10.000
Houston Pilots M - Kinder 1	9.746	9.824	9.961	9.844	9.768	9.768	9.885	10.000	10.000	9.903	9.694	9.719	9.651	9.568	9.722	9.569	9.698	8.752	8.479	7.059	6.732	5.799	6.887	9.864	10.000	10.000	10.000	10.000	10.000	10.000	10.000	10.000	10.000	10.000	10.000	10.000
Houston Pilots L - Greens Bayou	10.000	10.000	10.000	10.000	10.000	10.000	10.000	10.000	10.000	10.000	10.000	10.000	9.978	9.969	10.000	9.978	9.971	9.069	8.781	7.153	6.928	5.960	6.942	10.000	10.000	10.000	10.000	10.000	10.000	10.000	10.000	10.000	10.000	10.000	10.000	10.000
Houston Pilots K - Shell Crude	10.000	10.000	10.000	10.000	10.000	10.000	10.000	10.000	10.000	10.000	10.000	10.000	10.000	10.000	10.000	10.000	9.154	8.924	7.184	6.986	5.998	6.993	10.000	10.000	10.000	10.000	10.000	10.000	10.000	10.000	10.000	10.000	10.000	10.000	10.000	10.000
Houston Pilots J - Lynchburg Ferries	10.000	10.000	10.000	10.000	10.000	10.000	10.000	10.000	10.000	10.000	10.000	10.000	10.000	10.000	10.000	10.000	9.117	8.969	7.161	7.000	6.008	7.012	10.000	10.000	10.000	10.000	10.000	10.000	10.000	10.000	10.000	10.000	10.000	10.000	10.000	10.000
Houston Pilots I - Exxon 3	10.000	10.000	10.000	10.000	10.000	10.000	10.000	10.000	10.000	10.000	10.000	10.000	9.902	9.372	9.313	9.374	9.809	8.963	8.892	7.229	7.016	6.144	7.196	10.000	10.000	10.000	10.000	10.000	10.000	10.000	10.000	10.000	10.000	10.000	10.000	10.000
Houston Pilots H - Morgans Point	10.000	10.000	10.000	10.000	10.000	10.000	10.000	10.000	10.000	10.000	10.000	10.000	9.492	8.171	7.930	7.983	9.450	8.845	8.753	7.478	7.218	6.569	7.557	9.997	10.000	10.000	10.000	10.000	10.000	10.000	10.000	10.000	10.000	10.000	10.000	10.000
Houston Pilots G - 75/76	10.000	10.000	10.000	10.000	10.000	10.000	10.000	10.000	10.000	10.000	10.000	9.949	8.790	7.106	6.946	6.965	8.989	8.693	8.604	7.684	7.329	6.903	7.757	9.706	10.000	10.000	10.000	10.000	10.000	10.000	10.000	10.000	10.000	10.000	10.000	10.000
Houston Pilots F - 63/64	10.000	10.000	10.000	10.000	10.000	10.000	10.000	10.000	10.000	10.000	10.000	9.629	8.156	6.513	6.703	6.723	8.581	8.388	8.164	7.535	7.160	7.086	7.711	9.224	10.000	10.000	10.000	10.000	10.000	10.000	10.000	10.000	10.000	10.000	10.000	10.000
Houston Pilots E - 51/52	10.000	10.000	10.000	10.000	10.000	10.000	10.000	10.000	10.000	10.000	10.000	9.243	7.659	6.558	7.400	7.404	8.183	8.040	7.586	7.105	6.650	6.846	7.288	8.627	10.000	10.000	10.000	10.000	10.000	10.000	10.000	10.000	10.000	10.000	10.000	10.000
Houston Pilots D - 37/38	10.000	10.000	10.000	10.000	10.000	10.000	10.000	10.000	10.000	10.000	10.000	8.829	7.558	7.133	8.480	8.574	7.785	7.639	7.114	6.447	5.790	6.045	6.534	7.816	9.710	10.000	10.000	10.000	10.000	10.000	10.000	10.000	10.000	10.000	10.000	10.000
Houston Pilots C - 25/26	10.000	10.000	10.000	10.000	10.000	10.000	10.000	10.000	10.000	10.000	9.716	8.413	7.394	6.602	8.107	8.410	7.309	7.209	6.774	6.051	5.378	5.830	6.339	7.552	9.218	10.000	10.000	10.000	10.000	10.000	10.000	10.000	10.000	10.000	10.000	10.000
Houston Pilots B - 11/12	10.000	10.000	10.000	10.000	10.000	10.000	10.000	10.000	10.000	10.000	9.271	7.869	6.802	5.351	6.887	7.275	6.745	6.763	6.265	5.465	5.028	5.709	6.312	7.236	8.656	9.362	10.000	10.000	10.000	10.000	10.000	10.000	10.000	10.000	10.000	10.000
Houston Pilots A - 1 & 2 Bravo	10.000	10.000	10.000	10.000	10.000	10.000	10.000	10.000	10.000	10.000	8.270	7.055	6.225	3.557	4.522	4.646	5.914	6.014	5.608	4.394	4.556	5.502	6.545	5.898	8.032	8.264	8.799	10.000	10.000	10.000	10.000	10.000	10.000	10.000	10.000	10.000

More details on following slides for visibility risks as this may be underdone.

Houston Pilots Extended Range Visibility Report



Saturday, 2/19/22

Currently not anticipating fog on Friday with elevated N winds and dry air behind the front.

Confidence



Monday, 2/21/22

Monday at this distance would be a period to watch for fog potential as low level flow + moisture working in. More to come in future updates.

Confidence



Sunday, 2/20/22

Currently not favoring fog Sun AM for our stations.

Confidence

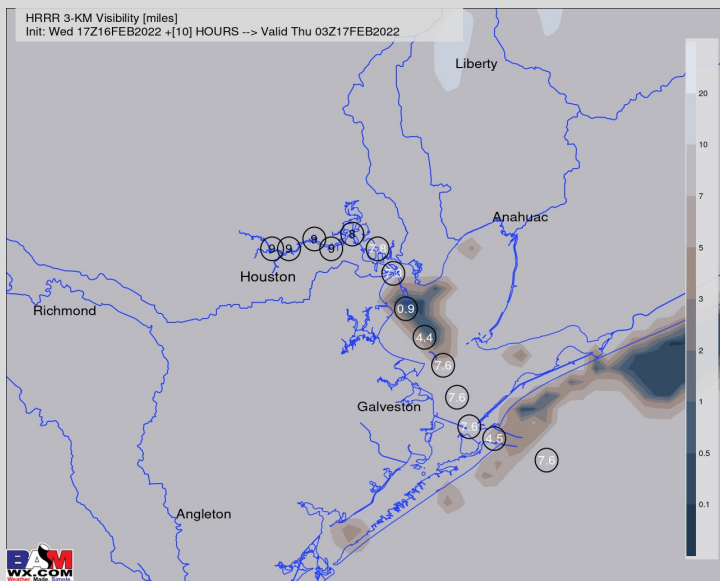


Daily Fog Chance

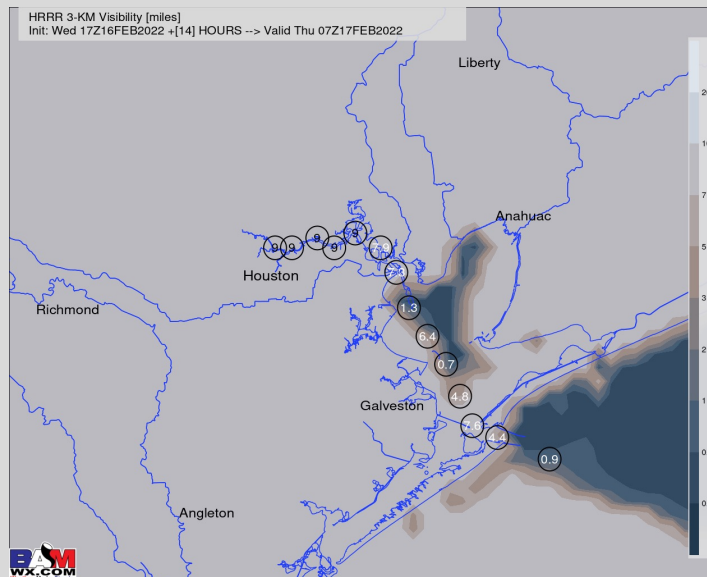
Saturday AM	Unlikely
Sunday AM	Unlikely
Monday AM	Possible

Houston Pilots Visibility Report

9 PM WED Visibility (miles)



3 AM THU Visibility (miles)



Confidence

**Above
Normal**

**Below
Normal**

Fog Threat

7 PM – 11 PM WED

Low

12 AM Thu ~ 10 AM

Medium

- Data this afternoon has become a little more aggressive with the fog threat. In the evening hours after sundown, a very isolated instance of patchy fog forming cannot be fully ruled out off of the Gulf Coast for the boarding station. The setup does not look great, but we do not think there is a 0% chance
- For Thursday (12-10AM), fog/mist chances look better as better moisture builds into the area. There is still some uncertainty on just how widespread fog can be with winds rather elevated. If this fog fails to materialize, it would be because winds are preventing the setup.
- Lower confidence on fog details as only a few MPH less/more than what Currently favoring for sea fog to be most likely from 3 AM – 10 AM before winds shift to the N and take chances away.
- This slide will be updated as necessary into the evening hours as latest data comes in.

Houston Pilots: Wed. 2/16/2022

Forecast Discussion

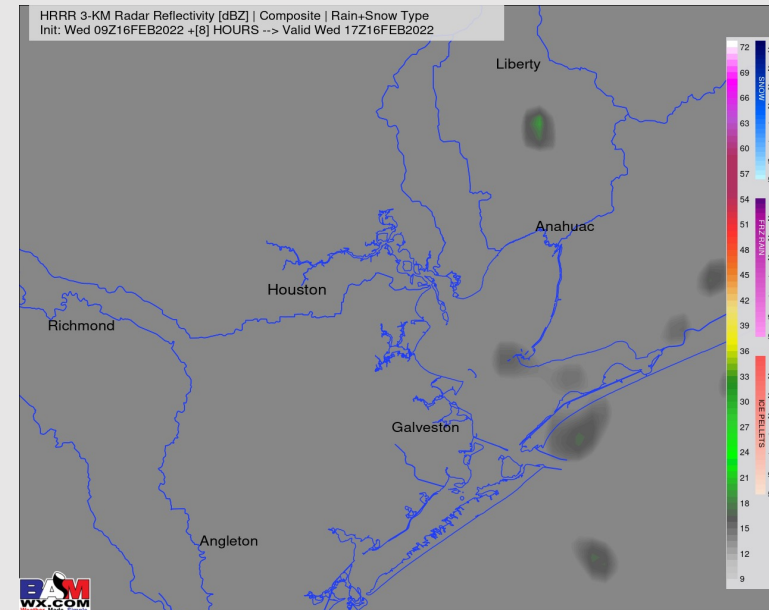
Precip: An isolated pocket of mist/drizzle (10-20%) will be possible this evening before slightly better chances (20-30%) slightly after sundown. Total precip would be a scattered few hundredths of an inch.

Wind: Sustained winds look to be 10-15 MPH out of the SE for most of the day on Wed with gusts 15-20 MPH at the boarding station throughout the day. After sundown, winds look to pick up to 15-20 MPH with gusts 20-25 MPH at the boarding station into the overnight.

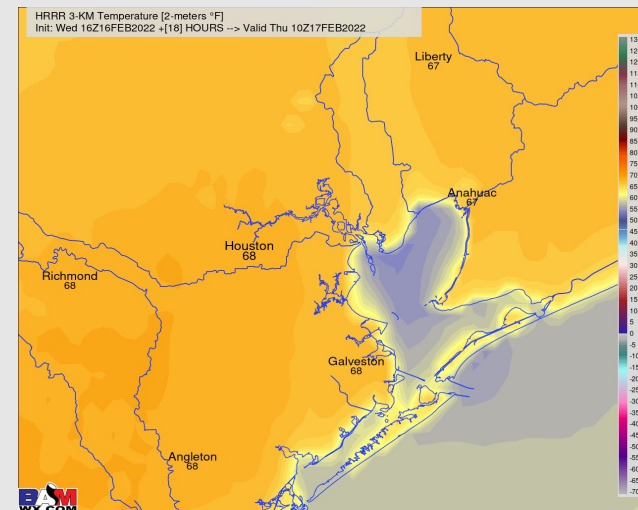
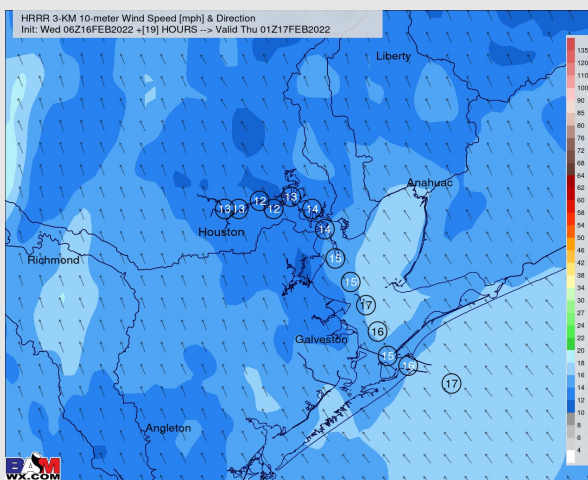
Temps: Lows tonight drop back into the upper 60s inland, lower 60s over the stations/ bay areas.

Visibility: Check slide above for more info on visibility.

Precip Forecast: 11 AM CT



Wind Speed:
8 PM CT



Low Temps
Tonight

Houston Pilots: *Thu. 2/17/2022*

Forecast Discussion

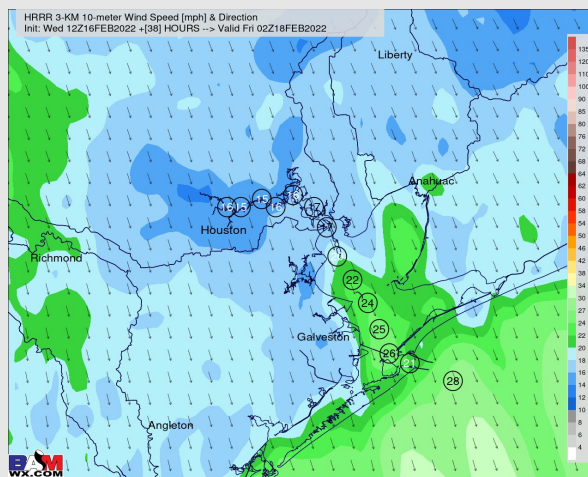
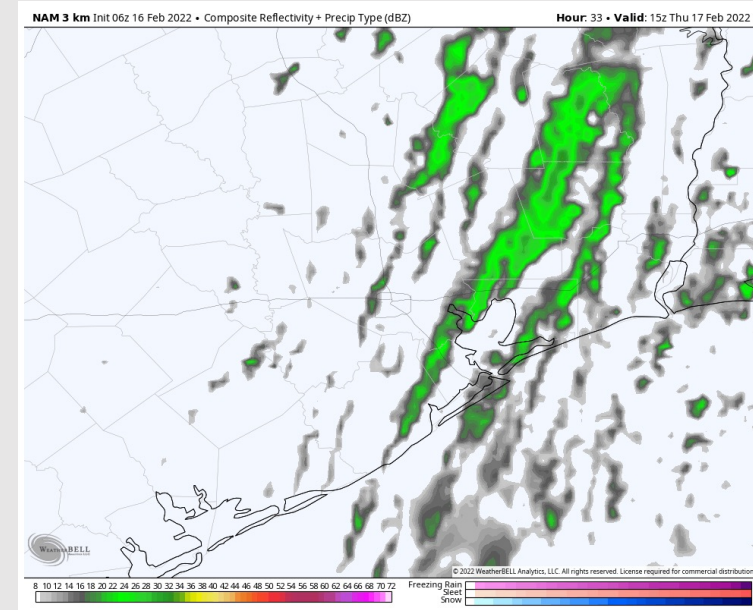
Precip: Anticipating the main line of showers with the front to arrive in the 7AM – 10 AM timeframe and continue through late morning – noon. Lightning will be possible, but severe weather likely stays to the north. Anticipating drier conditions for the PM hours behind the front.

Wind: Sustained winds look to be 13-18 MPH out of the SSE into Thu AM with gusts to 18-23 MPH at the boarding station. Winds veer out of the SW/WSW into the mid-late AM hours. After ~noon, sustained winds are 15-20 MPH out of the WNW with gusts 20-25 MPH. After sundown, winds look to pick up quickly again to 23-28 MPH sustained at the boarding station with gusts 30-40 MPH possible into the overnight from the N.

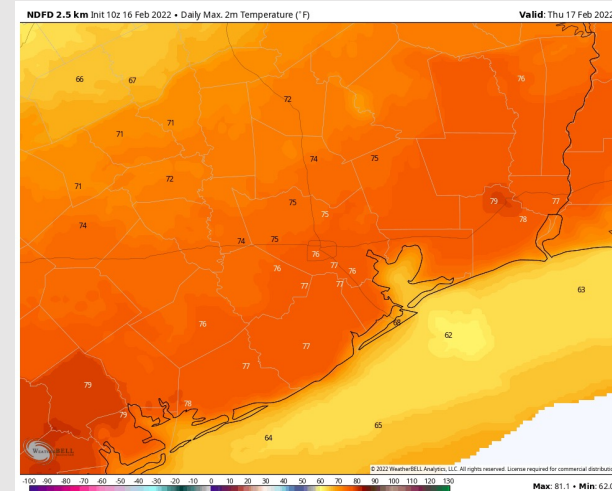
Temps: High temps look to sit in the upper 60s to low 70s F on Wed (warmer inland, cooler closer to boarding station).

Visibility: See slide above for more details.

Precip Forecast: 9 AM CT



Wind Speed
8 PM CT



High Temps
Thursday

Houston Pilots: *Fri. 2/18/2022*

Forecast Discussion

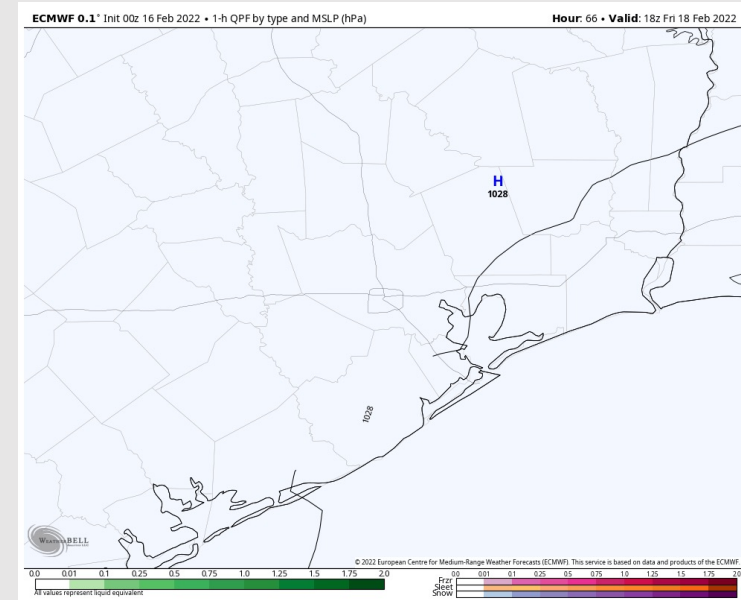
Precip: No precip expected Friday.

Wind: Winds will be out of the NNE on Friday. Through mid-day 18-23 MPH sustained with gusts to 30 MPH possible. Afternoon hours taper a bit to 10-15 MPH sustained at the boarding station with gusts 15-20 MPH possible.

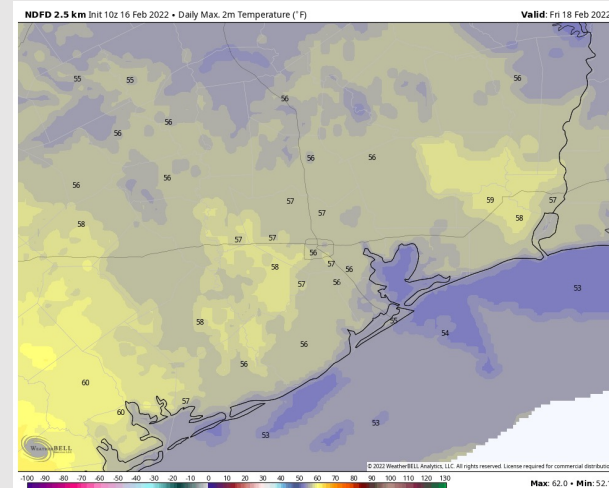
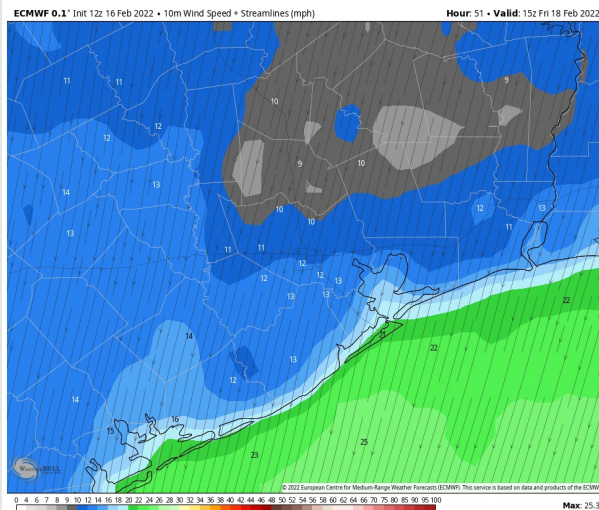
Temps: Behind the front, highs look to top out in the mid 50s.

Visibility: No visibility concerns expected Friday.

Precip Forecast: 12 PM CT



Wind Speed
9 AM CT

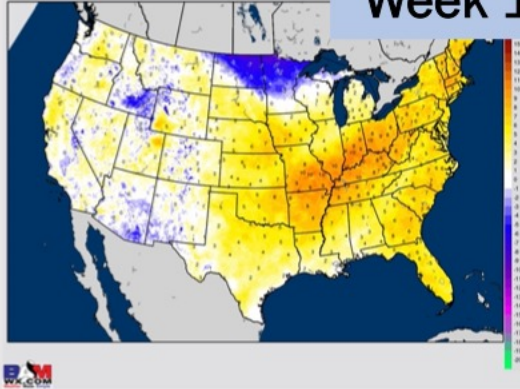


High Temps
Friday

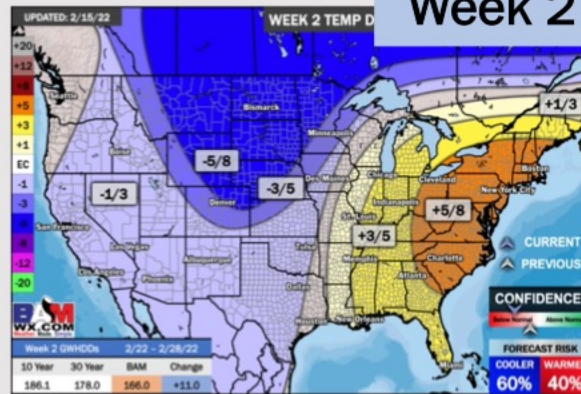
Houston Pilots: 2/15/22

BAMcast Average Temperature Anomaly [°F]
7-DAY AVG for Tue 15FEB2022 thru Mon 21FEB2022 Days 1 to 7

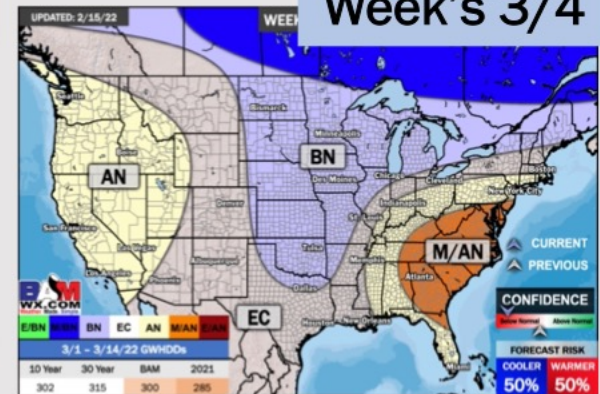
Week 1



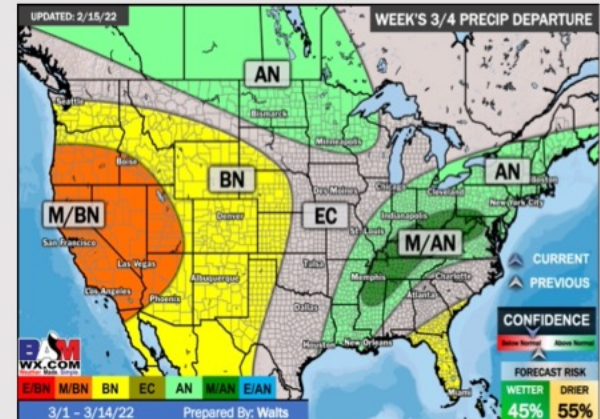
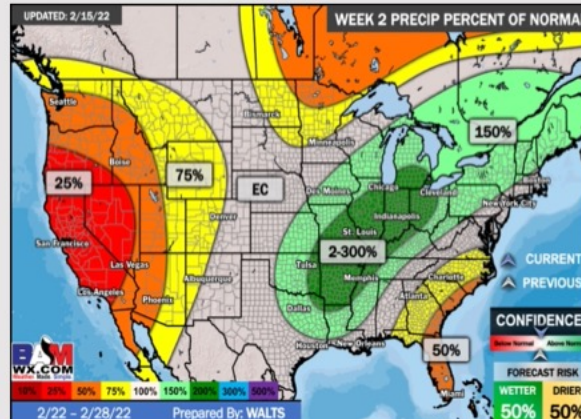
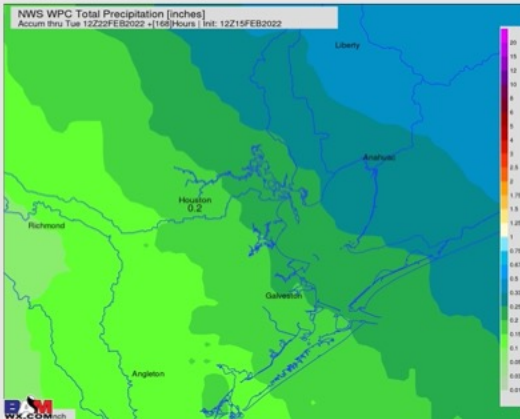
Week 2



Week's 3/4



NWS WPC Total Precipitation [inches]
Accum thru Tue 12Z22FEB2022 -1160Hours 1 Int: 12Z15FEB2022



- Isolated to scattered chances for a few showers will be possible Today – Wed out ahead of the front. Anticipating the main line of precip with the front Thu AM. Temps average out slightly above normal this week.
- The week 2 timeframe is expected to have near normal risks for temperatures and near normal to slightly above normal risks for precip.
- Right now, we are favoring near normal to slightly below normal temperatures and near normal to slightly above normal risks for precip for the weeks 3-4 timeframe.