

Houston Pilots Forecast Package



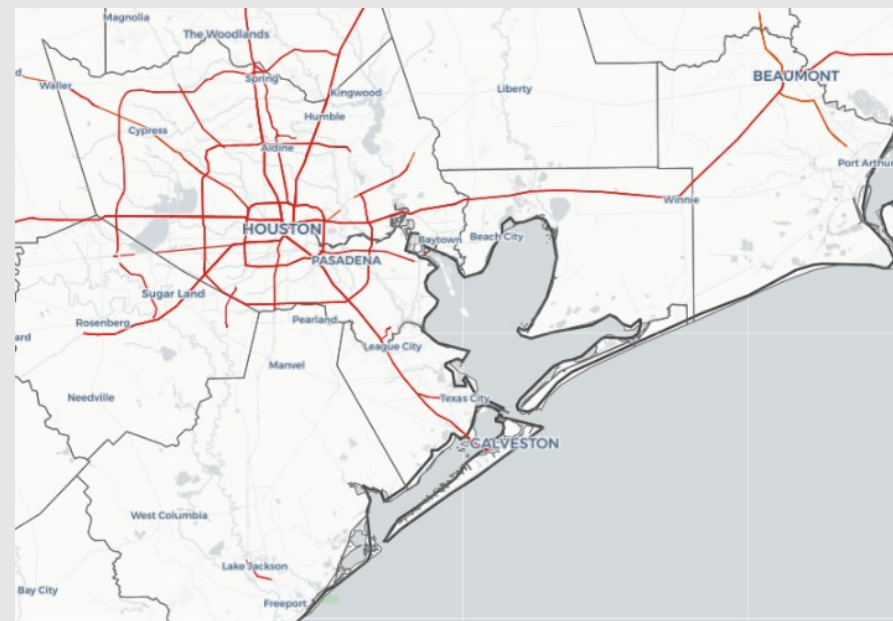
Updated: 12:45 PM CT

Tuesday, February 15, 2022

Forecaster: Cardona & Klare

Weather Headlines

- Isolated – scattered chances for a few showers today, however, anticipating the main line of showers/thunderstorms Thu AM with the upcoming front.
- Fog signal continues to look weak for at least the next few days for our stations.
- Winds start to pick up Wed night and continue elevated throughout Thursday ~20-30 MPH sustained.



Radar/ NWS Alerts: 12:45 AM CT



As always, please do not hesitate to reach out to us with any forecast questions via the chat option on the Weather Porthole or our on-call number, **(317)-560-8122** press 1 for forecast questions.

Houston Pilots Visibility Report



Time	02-15-2022 Tue 12pm	02-15-2022 Tue 1pm	02-15-2022 Tue 2pm	02-15-2022 Tue 3pm	02-15-2022 Tue 4pm	02-15-2022 Tue 5pm	02-15-2022 Tue 6pm	02-15-2022 Tue 7pm	02-15-2022 Tue 8pm	02-15-2022 Tue 9pm	02-15-2022 Tue 10pm	02-15-2022 Tue 11pm	02-16-2022 Wed 12am	02-16-2022 Wed 1am	02-16-2022 Wed 2am	02-16-2022 Wed 3am	02-16-2022 Wed 4am	02-16-2022 Wed 5am	02-16-2022 Wed 6am	02-16-2022 Wed 7am	02-16-2022 Wed 8am	02-16-2022 Wed 9am	02-16-2022 Wed 10am	02-16-2022 Wed 11am	02-16-2022 Wed 12pm	02-16-2022 Wed 1pm	02-16-2022 Wed 2pm	02-16-2022 Wed 3pm	02-16-2022 Wed 4pm	02-16-2022 Wed 5pm	02-16-2022 Wed 6pm	02-16-2022 Wed 7pm	02-16-2022 Wed 8pm	02-16-2022 Wed 9pm	02-16-2022 Wed 10pm	02-16-2022 Wed 11pm	
Houston Pilots N - 610 Bridge	10.000	10.000	10.000	10.000	10.000	10.000	10.000	10.000	10.000	10.000	10.000	10.000	10.000	10.000	10.000	10.000	10.000	10.000	10.000	10.000	10.000	10.000	10.000	10.000	10.000	10.000	10.000	10.000	10.000	10.000	10.000	10.000	10.000	10.000	9.746	8.961	
Houston Pilots M - Kinder 1	10.000	10.000	10.000	10.000	10.000	10.000	10.000	10.000	10.000	10.000	10.000	10.000	10.000	10.000	10.000	10.000	10.000	10.000	10.000	10.000	10.000	10.000	10.000	10.000	10.000	10.000	10.000	10.000	10.000	10.000	10.000	10.000	10.000	10.000	9.645	8.758	
Houston Pilots L - Greens Bayou	10.000	10.000	10.000	10.000	10.000	10.000	10.000	10.000	10.000	10.000	10.000	10.000	10.000	10.000	10.000	10.000	10.000	10.000	10.000	10.000	10.000	10.000	10.000	10.000	10.000	10.000	10.000	10.000	10.000	10.000	10.000	10.000	10.000	10.000	9.570	8.558	
Houston Pilots K - Shell Crude	10.000	10.000	10.000	10.000	10.000	10.000	10.000	10.000	10.000	10.000	10.000	10.000	10.000	10.000	10.000	10.000	9.998	9.998	9.998	9.964	10.000	10.000	10.000	10.000	10.000	10.000	10.000	10.000	10.000	10.000	10.000	9.944	9.938	9.963	9.315	8.172	
Houston Pilots J - Lynchburg Ferries	10.000	10.000	10.000	10.000	10.000	10.000	10.000	10.000	10.000	10.000	10.000	10.000	10.000	10.000	10.000	10.000	9.979	9.979	9.979	9.945	10.000	10.000	10.000	10.000	10.000	10.000	10.000	10.000	10.000	10.000	10.000	9.915	9.907	9.945	9.409	8.281	
Houston Pilots I - Exxon 3	10.000	10.000	10.000	10.000	10.000	10.000	10.000	10.000	10.000	10.000	10.000	10.000	10.000	10.000	10.000	10.000	9.783	9.783	9.783	9.749	9.908	9.908	10.000	10.000	10.000	10.000	10.000	10.000	10.000	10.000	9.955	9.900	9.566	9.501	9.733	9.034	7.909
Houston Pilots H - Morgans Point	10.000	10.000	10.000	10.000	10.000	10.000	10.000	10.000	10.000	10.000	10.000	10.000	10.000	10.000	10.000	10.000	9.442	9.427	9.399	9.365	9.696	9.726	10.000	10.000	10.000	10.000	10.000	10.000	10.000	10.000	9.846	9.618	8.852	8.706	9.336	8.648	7.720
Houston Pilots G - 75/76	10.000	10.000	10.000	10.000	10.000	10.000	10.000	10.000	10.000	10.000	10.000	10.000	10.000	10.000	10.000	10.000	9.055	9.019	8.998	8.963	9.359	9.515	10.000	10.000	10.000	10.000	10.000	10.000	10.000	10.000	9.451	8.992	7.727	7.507	8.740	8.217	7.605
Houston Pilots F - 63/64	10.000	10.000	10.000	10.000	10.000	10.000	10.000	10.000	10.000	10.000	10.000	10.000	10.000	10.000	10.000	10.000	8.745	8.684	8.679	8.644	8.986	9.356	10.000	10.000	10.000	10.000	10.000	10.000	10.000	10.000	8.878	8.123	6.592	6.255	8.023	7.942	7.623
Houston Pilots E - 51/52	10.000	10.000	10.000	10.000	10.000	10.000	10.000	10.000	10.000	10.000	10.000	10.000	10.000	10.000	10.000	10.000	8.615	8.575	8.575	8.541	8.681	9.280	9.708	10.000	10.000	10.000	10.000	10.000	10.000	9.393	8.182	7.182	5.798	5.407	7.393	7.747	7.477
Houston Pilots D - 37/38	10.000	10.000	10.000	10.000	10.000	10.000	10.000	10.000	10.000	10.000	10.000	10.000	10.000	10.000	10.000	10.000	8.717	8.713	8.723	8.685	8.581	9.255	9.283	9.646	9.825	10.000	9.841	8.935	8.370	7.501	6.473	5.654	5.296	6.944	7.546	7.104	
Houston Pilots C - 25/26	10.000	10.000	10.000	10.000	10.000	10.000	10.000	10.000	10.000	10.000	10.000	10.000	10.000	10.000	10.000	10.000	8.605	8.605	8.650	8.606	8.545	9.093	9.128	9.175	9.222	9.373	9.159	8.201	7.916	7.113	6.210	5.808	5.555	6.794	7.570	6.935	
Houston Pilots B - 11/12	10.000	10.000	10.000	10.000	10.000	10.000	10.000	10.000	10.000	10.000	10.000	10.000	10.000	10.000	10.000	10.000	8.411	8.411	8.432	8.392	8.442	8.859	8.910	8.864	8.805	8.820	8.716	7.736	7.600	6.866	6.124	5.753	5.807	6.717	7.680	6.953	
Houston Pilots A - 1 & 2 Bravo	10.000	10.000	10.000	10.000	10.000	10.000	10.000	10.000	10.000	10.000	10.000	10.000	10.000	10.000	10.000	10.000	8.111	8.111	8.111	8.076	8.143	8.448	8.505	8.460	8.283	8.318	8.116	7.558	7.541	7.287	7.027	6.247	6.914	7.162	7.927	7.446	

Houston Pilots Extended Range Visibility Report



Friday, 2/18/22

Not favoring fog Fri AM with elevated N winds and plenty of dry air behind the front

Confidence

Above
Normal

Below
Normal

Sunday, 2/20/22

Keeping an eye on fog potential Sun AM with SE winds and more moisture advecting in. Lower confidence as this is still far out.

Confidence

Above
Normal

Below
Normal

Saturday, 2/19/22

Currently not favoring fog for our stations Sat AM with still dry air and NE winds.

Confidence

Above
Normal

Below
Normal

Daily Fog Chance

Friday AM	Unlikely
Saturday AM	Unlikely
Sunday AM	Possible

Houston Pilots: Tue. 2/15/2022

Forecast Discussion

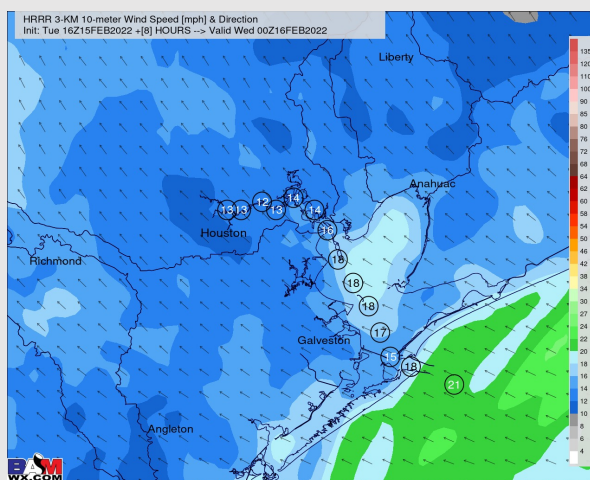
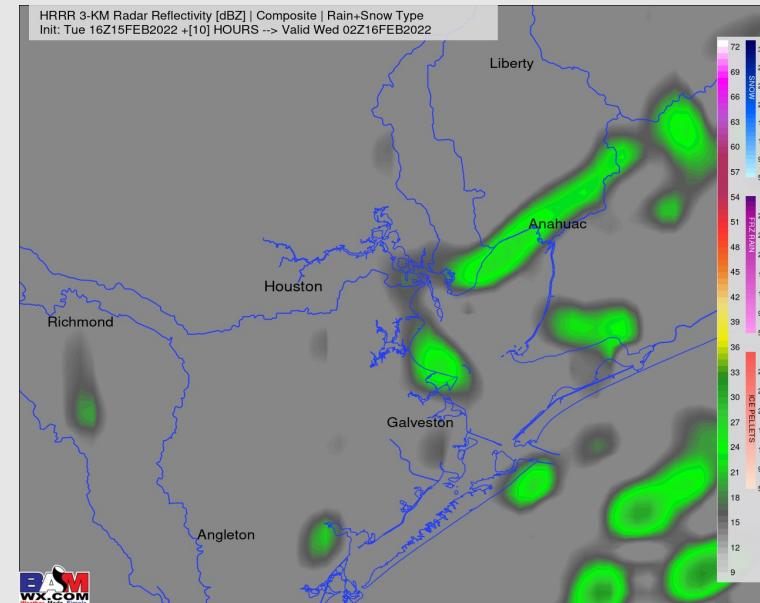
Precip: Scattered chances for a few showers look to be possible from ~6PM through midnight (20-30% chance).

Wind: Sustained winds look to be 15-20 MPH with gusts 20-30 MPH possible through the PM hours. Sustained winds decrease slowly after midnight.

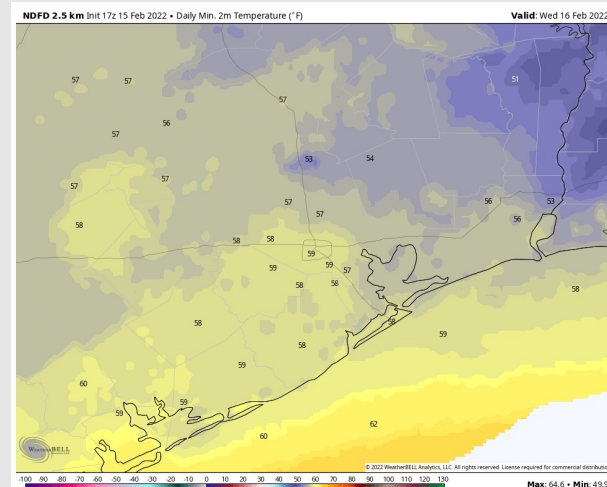
Temps: Low temps tonight sit in the mid to upper 50s F.

Visibility: Patchy mist will be possible towards Morgan's Point after midnight. Fog is not anticipated for our stations.

Precip Forecast: 5 PM CT



Wind Speed
6 PM CT



High Temps
Today

Houston Pilots: Wed. 2/16/2022

Forecast Discussion

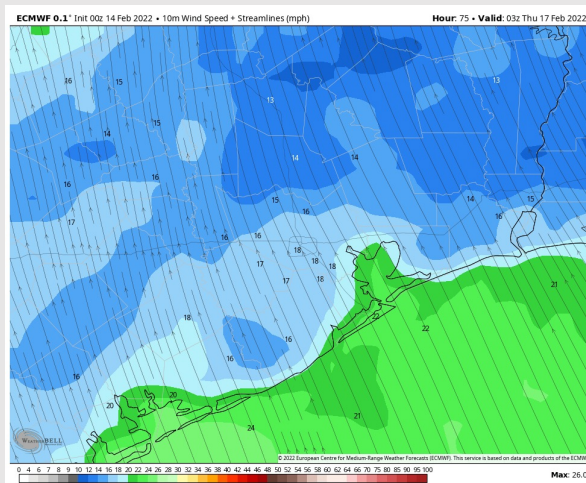
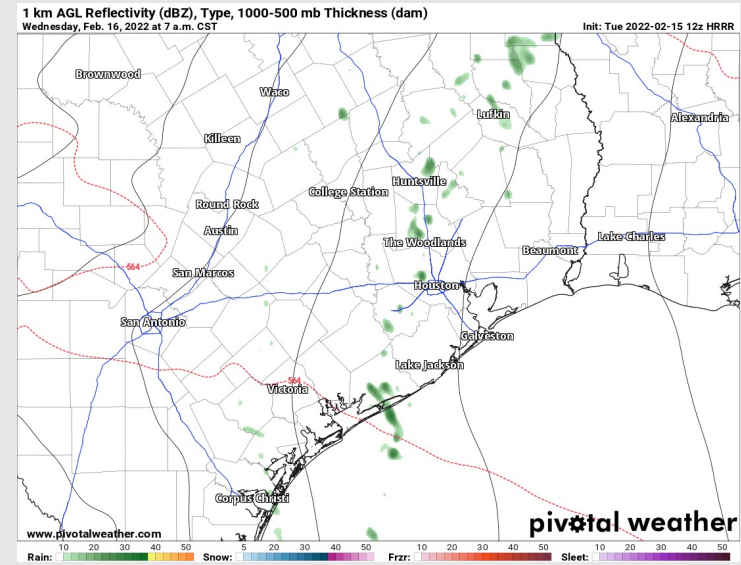
Precip: A 20-30% chance for a few showers Wednesday morning, anticipating overall dry conditions for the PM hours.

Wind: Sustained winds look to be 15-20 MPH out of the SE for most of the day on Wed with gusts 20-25 MPH at the boarding station throughout the day. After sundown, winds look to pick up to 20-25 MPH with gusts 20-30 MPH at the boarding station into the overnight.

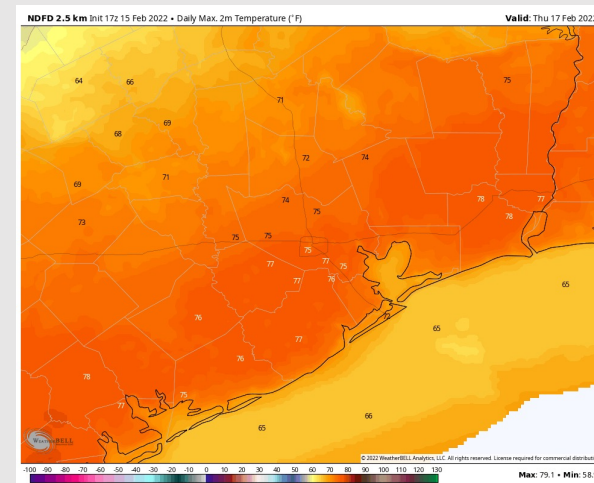
Temps: High temps look to sit in the upper 60s to low 70s F on Wed.

Visibility: Patchy mist looks to be possible Wed AM from around Morgan's Point and stations south. Patchy fog/mist looks to be possible again ~7PM through at least midnight. Not anticipating visibilities less than 3 miles.

Precip Forecast: 8 AM CT



Wind Speed:
9 PM CT



High Temps
Wednesday

Houston Pilots: *Thu. 2/17/2022*

Forecast Discussion

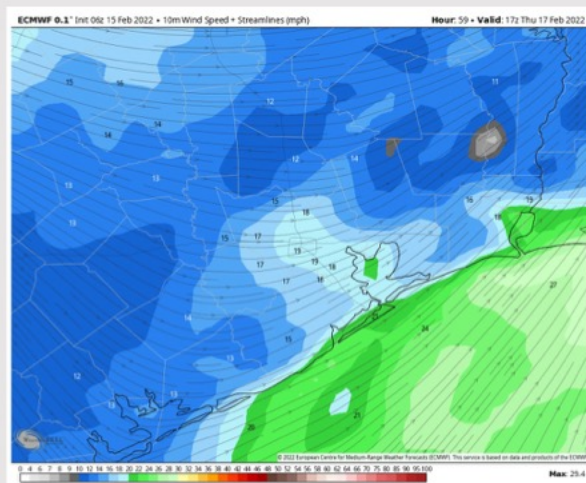
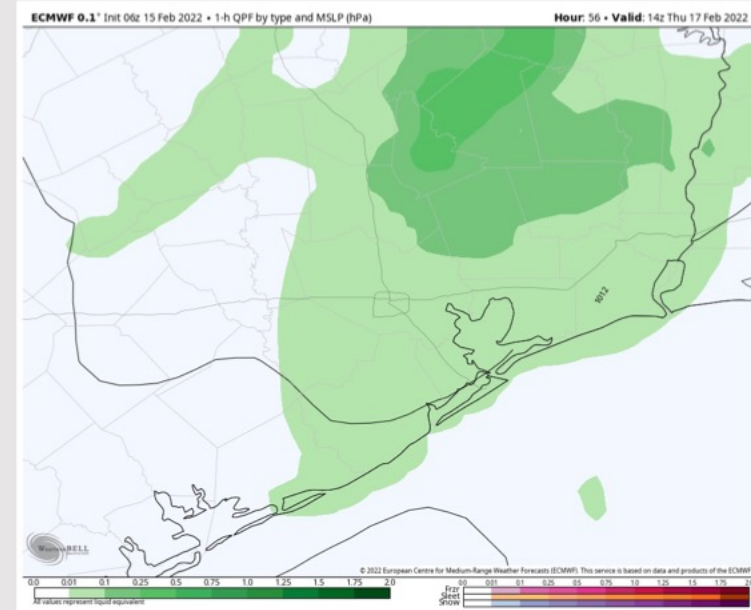
Precip: Anticipating the main line of showers/thunderstorms with the front to arrive in the 6AM – 8 AM timeframe and continue through around noon. Lightning and a few heavier downpours will be possible. Anticipating drier conditions for the PM hours behind the front.

Wind: Sustained winds look to be 20-25 MPH out of the SSE into Thu AM with gusts 25-30 MPH at the boarding station. Winds veer out of the SW/WSW into the mid-late AM hours. After ~1PM, sustained winds are 15-20 MPH out of the WSW with gusts 20-25 MPH and continue to veer more out of the NW. After sundown, winds look to pick up quickly again to 23-28 MPH sustained at the boarding station out of the NNW with gusts 30-35 MPH possible into the overnight.

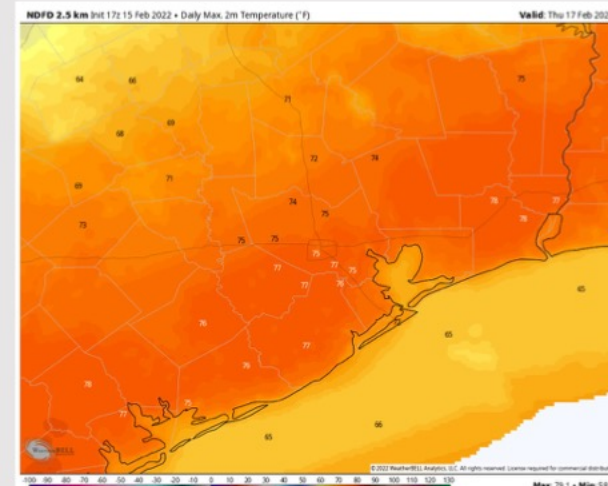
Temps: High temps Thu look to be in the low to mid 70s F.

Visibility: Currently not anticipating fog for our stations Fri, however, patchy mist looks to continue to be possible from Wed night out ahead of the arrival of the front.

Precip Forecast: 8 AM CT



Wind Speed
11 AM CT



High Temps
Thursday