

# Houston Pilots Forecast Package

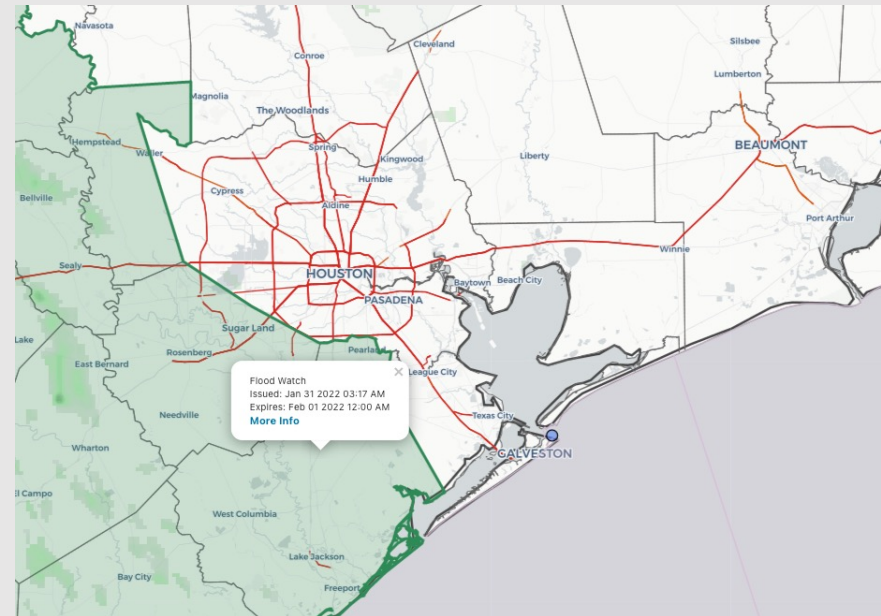


Updated: 5:10 AM CT  
Monday, Jan 31, 2022

Forecasters: Carolina Cardona  
& Caroline Klare

## Weather Headlines

- Scattered showers beginning this morning, however anticipating the main wave of showers and thunderstorms to arrive in the afternoon/evening timeframe today. Stronger storms with heavy downpours and strong wind gusts will be possible.
- Winds start to pick up this morning and into the PM ~18-23 MPH sustained.
- Keeping an eye on Tuesday AM & Wednesday AM for the next best shot at fog development.



**Radar/ NWS Alerts: 5:10 AM CT**



As always, please do not hesitate to reach out to us with any forecast questions via the chat option on the Weather Porthole or our on-call number, **(317)-560-8122** press 1 for forecast questions.

# Houston Pilots Visibility Report



Time	01-31-2022 Mon 3am	01-31-2022 Mon 4am	01-31-2022 Mon 5am	01-31-2022 Mon 6am	01-31-2022 Mon 7am	01-31-2022 Mon 8am	01-31-2022 Mon 9am	01-31-2022 Mon 10am	01-31-2022 Mon 11am	01-31-2022 Mon 12pm	01-31-2022 Mon 1pm	01-31-2022 Mon 2pm	01-31-2022 Mon 3pm	01-31-2022 Mon 4pm	01-31-2022 Mon 5pm	01-31-2022 Mon 6pm	01-31-2022 Mon 7pm	01-31-2022 Mon 8pm	01-31-2022 Mon 9pm	01-31-2022 Mon 10pm	01-31-2022 Mon 11pm	02-01-2022 Tue 12am	02-01-2022 Tue 1am	02-01-2022 Tue 2am	02-01-2022 Tue 3am	02-01-2022 Tue 4am	02-01-2022 Tue 5am	02-01-2022 Tue 6am	02-01-2022 Tue 7am	02-01-2022 Tue 8am	02-01-2022 Tue 9am	02-01-2022 Tue 10am	02-01-2022 Tue 11am	02-01-2022 Tue 12pm	02-01-2022 Tue 1pm	02-01-2022 Tue 2pm	
Houston Pilots N - 610 Bridge	10.000	10.000	10.000	10.000	10.000	9.038	10.000	10.000	10.000	10.000	6.915	5.960	5.627	4.902	4.902	4.902	5.931	5.931	5.931	4.897	4.897	5.931	4.897	5.931	5.976	3.943	0.761	0.523	0.284	0.284	3.943	6.930	10.000	10.000	10.000	10.000	
Houston Pilots M - Kinder 1	10.000	10.000	10.000	10.000	10.000	9.038	10.000	10.000	10.000	10.000	6.919	5.965	5.950	4.902	4.902	4.902	6.202	5.931	5.931	4.918	4.918	5.931	5.711	5.931	6.474	5.007	2.485	1.715	1.787	0.409	3.943	7.178	10.000	10.000	10.000	10.000	
Houston Pilots L - Greens Bayou	10.000	10.000	10.000	10.000	10.000	9.038	10.000	10.000	10.000	10.000	6.915	5.960	5.950	4.902	4.902	5.256	6.538	5.931	5.931	4.944	4.930	5.931	6.400	6.718	7.145	6.323	4.911	3.180	3.180	0.480	3.943	7.539	10.000	10.000	10.000	10.000	
Houston Pilots K - Shell Crude	10.000	10.000	10.000	10.000	10.000	9.136	10.000	10.000	10.000	10.000	7.217	6.890	5.952	5.447	5.936	5.936	6.965	5.931	5.931	4.944	4.930	5.931	6.400	6.718	7.145	7.999	6.429	4.022	3.698	0.480	3.943	7.999	10.000	10.000	10.000	10.000	
Houston Pilots J - Lynchburg Ferries	10.000	10.000	10.000	10.000	10.000	9.136	10.000	10.000	10.000	10.000	7.924	6.890	5.936	5.936	5.936	5.936	6.965	5.931	5.931	4.944	4.930	5.931	6.557	6.718	7.145	7.999	6.557	4.022	3.698	0.480	3.943	7.999	10.000	10.000	10.000	10.000	
Houston Pilots I - Exxon 3	10.000	10.000	10.000	10.000	10.000	10.000	10.000	10.000	10.000	10.000	9.038	6.890	6.890	5.936	5.936	6.773	6.965	5.931	5.965	4.944	4.930	5.931	6.557	6.718	7.145	7.999	6.557	4.022	3.698	0.480	3.943	7.999	10.000	10.000	10.000	10.000	
Houston Pilots H - Morgans Point	10.000	10.000	10.000	10.000	10.000	10.000	10.000	10.000	10.000	10.000	10.000	6.890	6.890	6.890	5.936	6.773	6.965	5.931	6.011	4.977	5.603	7.591	7.591	7.591	7.999	7.999	7.999	4.874	4.772	0.480	3.943	7.999	10.000	10.000	10.000	10.000	
Houston Pilots G - 75/76	10.000	10.000	10.000	10.000	10.000	10.000	10.000	10.000	10.000	10.000	10.000	6.890	6.890	6.890	5.936	6.890	6.965	5.931	6.668	4.962	5.469	7.085	7.085	7.085	7.611	7.999	7.576	4.874	4.772	0.449	4.458	7.999	10.000	10.000	10.000	10.000	
Houston Pilots F - 63/64	10.000	10.000	10.000	10.000	10.000	10.000	10.000	10.000	10.000	10.000	10.000	7.335	6.890	6.890	6.472	6.890	6.965	5.931	6.965	4.897	4.897	6.011	6.561	6.561	6.561	7.999	6.863	4.874	4.772	1.311	4.612	7.999	10.000	10.000	10.000	10.000	
Houston Pilots E - 51/52	10.000	10.000	10.000	10.000	10.000	10.000	10.000	10.000	10.000	10.000	10.000	7.924	6.890	6.890	6.890	6.890	6.965	6.011	7.413	4.897	4.897	4.977	5.864	5.931	6.885	7.845	5.864	4.874	4.772	3.241	5.193	7.999	10.000	10.000	10.000	10.000	
Houston Pilots D - 37/38	10.000	10.000	10.000	10.000	10.000	10.000	10.000	10.000	10.000	10.000	10.000	8.228	7.352	6.890	6.890	6.890	6.965	6.890	7.624	4.897	4.897	4.897	4.897	5.441	7.924	6.885	4.920	4.697	3.876	5.479	5.962	7.959	10.000	10.000	10.000	10.000	
Houston Pilots C - 25/26	10.000	10.000	10.000	10.000	10.000	10.000	10.000	10.000	10.000	10.000	10.000	9.038	8.751	6.890	6.890	6.890	6.121	7.677	7.999	4.897	4.897	4.897	4.897	5.985	7.999	6.965	4.920	5.314	2.912	7.677	7.677	7.999	10.000	10.000	10.000	10.000	
Houston Pilots B - 11/12	10.000	10.000	10.000	10.000	10.000	10.000	10.000	10.000	10.000	10.000	10.000	9.038	9.038	6.890	6.890	6.890	6.222	7.999	7.999	5.931	4.897	4.897	4.897	5.931	7.999	6.011	6.133	6.087	4.819	7.999	7.999	7.999	7.999	10.000	10.000	10.000	10.000
Houston Pilots A - 1 & 2 Bravo	10.000	10.000	10.000	10.000	10.000	10.000	10.000	10.000	10.000	10.000	10.000	9.038	9.038	6.890	7.732	7.924	6.965	7.835	7.999	3.936	4.022	3.860	3.740	4.475	7.999	6.965	7.999	7.999	7.999	7.999	7.999	7.999	9.289	8.551	8.273	8.172	

Check Tuesday's reduced visibility slide for more details.

# Houston Pilots Extended Range Visibility Report



## Thursday, 2/3/22

With elevated winds out of the north, not anticipating fog Thursday AM.



## Saturday, 2/5/22

Elevated winds out of the NE continue, currently not anticipating fog Sat AM.



## Friday, 2/4/22

With elevated winds out of the north continuing, not anticipating fog on Friday.



Daily Fog Chance	
Thursday AM	Unlikely
Friday AM	Unlikely
Saturday AM	Unlikely

# Houston Pilots: Mon. 1/31/2022

## Forecast Discussion

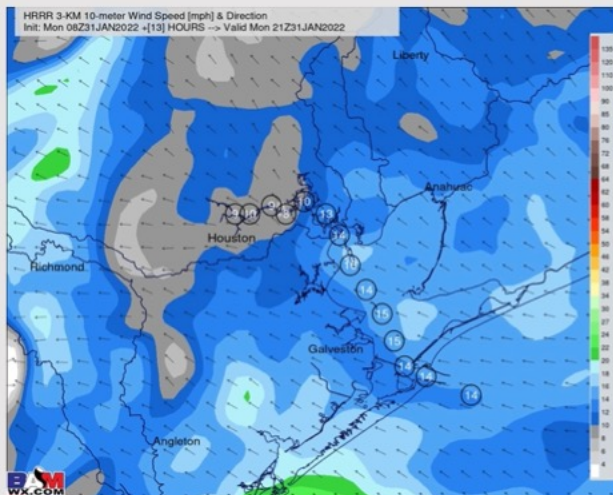
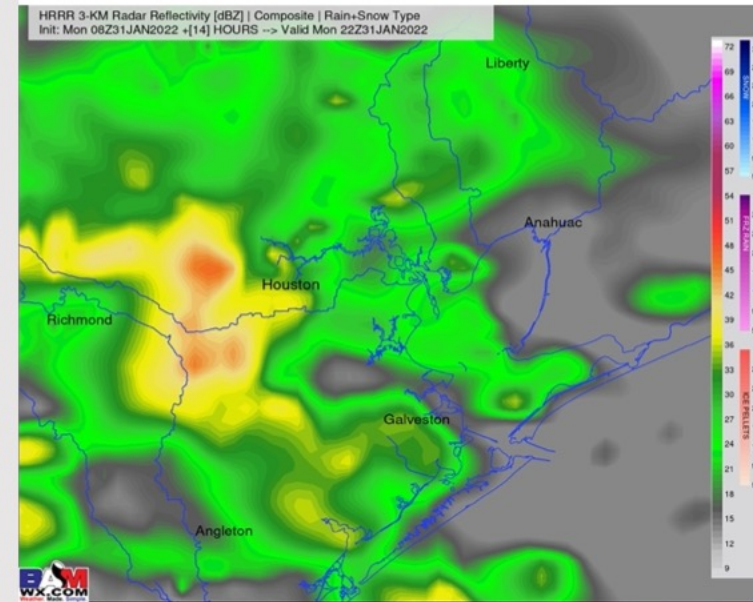
**Precip:** Isolated to scattered showers look to start as early as 6-8 AM (~20%). However, anticipating coverage of showers to start increasing around noon-1PM today. Shower and thunderstorms become more widespread as we go further into the afternoon and evening. Best chances for heavier and stronger thunderstorms looks to come after sundown, continuing through midnight. Lightning, heavy downpours, and strong wind gusts will all be possible.

**Wind:** Sustained winds continue 8-13 MPH out of the SE with gusts 13-18 MPH at the boarding station through around 8-9 AM. After this timeframe, sustained winds look to increase to 13-18 MPH at the boarding station with gusts 20-25 MPH. After noon, winds veer more out of the ESE. Winds overall remain 13-18 MPH sustained through the rest of the day, however, after sundown, winds gusting closer to 25-30 MPH will be possible under a stronger storm.

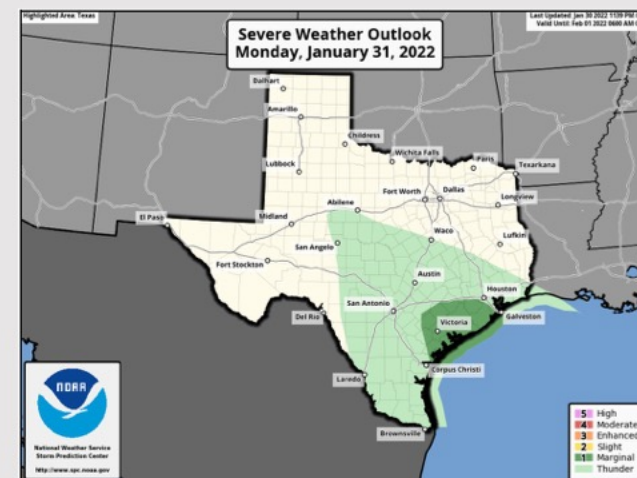
**Temps:** Highs today look to sit in the mid 60s F.

**Visibility:** Currently not anticipating fog for our stations today. Reduced visibility will be possible under a heavier storm in the PM.

## Precip Forecast: 4 PM CT



Wind Speed  
3 PM CT



Severe  
Weather  
Outlook  
Today

# Houston Pilots Visibility Report

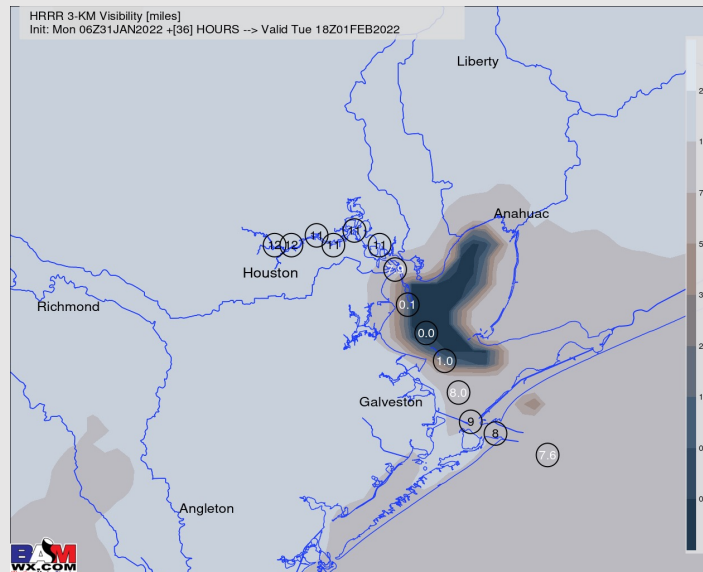
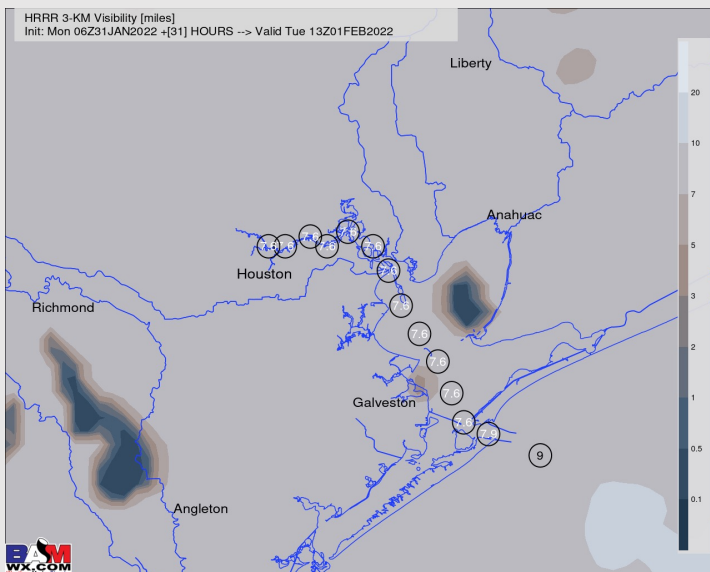
7 AM CT TUE Visibility (miles)

12 PM CT TUE Visibility (miles)

Confidence

Above  
Normal

Below  
Normal



## Reduced Visibility Threat

7AM ~ 12 PM TUE

Low to  
Medium

- Pockets of reduced visibility/fog are expected after the exit of precip Tue morning, beginning ~7AM timeframe as moisture from the early morning's system, as well as light winds are favorable for fog development.
- Reduced visibilities will be possible for the boarding station through Morgan's Point, however most fog is anticipated for stations 25/26 through Morgan's Point.
- Lower confidence on the exact exit time as some data has fog lingering into the afternoon hours, however it currently looks like the bulk of fog will be out of the Houston area ~12PM timeframe.

# Houston Pilots: Tue. 2/1/2022

## Forecast Discussion

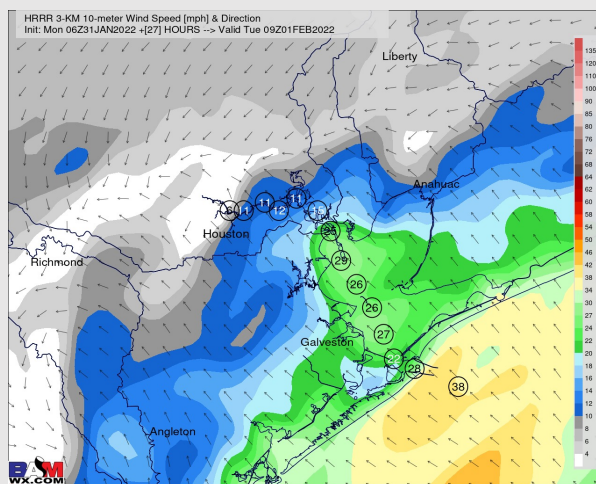
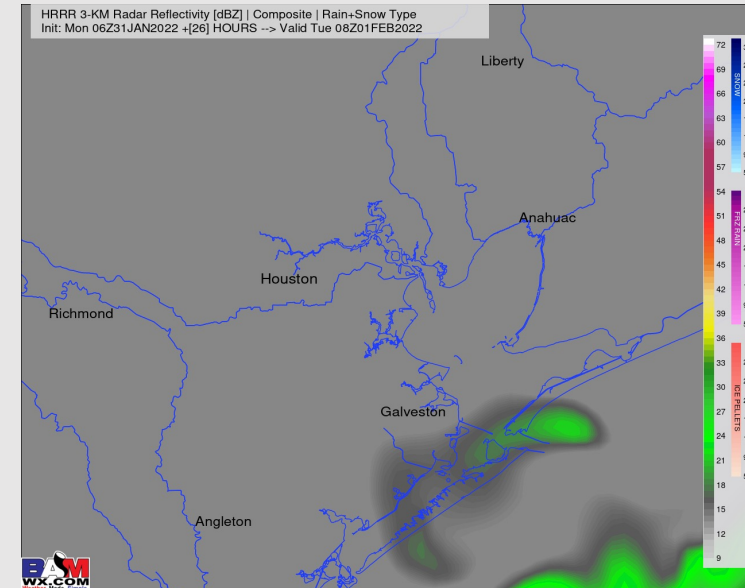
**Precip:** Anticipating the bulk of the precip to be out by the 2-3 AM timeframe. A few light spotty showers lingering for the rest of the AM would not be impossible, however, anticipating overall drier conditions for the rest of the day.

**Wind:** Sustained SE winds look to be 30 – 35 MPH at the boarding station (less towards Buffalo Bayou). Gusts up to 45 MPH can't be ruled out in the 3AM timeframe. From here, winds begin to slow down and by 7AM, winds are 5 – 10 MPH and variable in direction until ~2PM when winds veer out of the SW and remain out of the SW overnight.

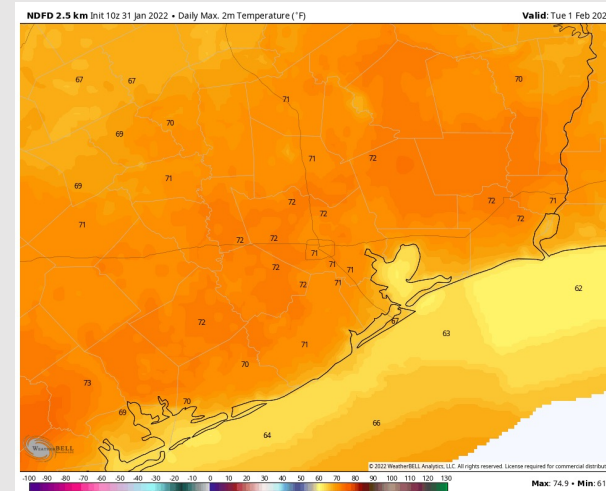
**Temps:** Highs on Tuesday look to be in the upper 60s to low 70s F.

**Visibility:** Fog/reduced visibility chances after the exit of precip will be possible Tues morning. See above slide for more details.

## Precip Forecast: 2 AM CT



**Wind Speed:**  
**3 AM CT**



**High Temps**  
**Tuesday**

# Houston Pilots: Wed. 2/2/2022

## Forecast Discussion

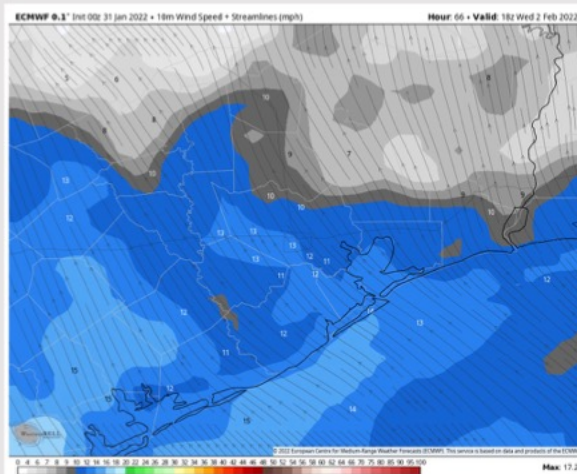
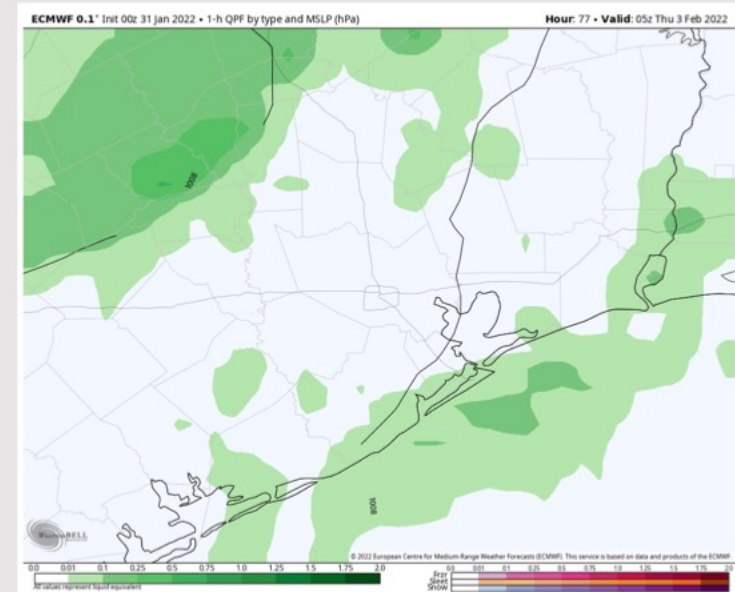
**Precip:** Anticipating dry conditions for our stations Wed AM. Isolated to scattered chances for showers looks to start after noon out ahead of the next front (20-30%). Coverage increases closer to midnight as the main line of showers/thunderstorms is anticipated after midnight.

**Wind:** Sustained winds look to be 5-10 MPH out of the SE through the ~mid morning hours. After this period, winds start to increase, 10-15 MPH at the boarding station with gusts 15-20 MPH through the afternoon hours. After sundown, sustained winds look to increase again to 13-18 MPH with gusts 18-23 MPH at the boarding station. Winds look to increase again after midnight.

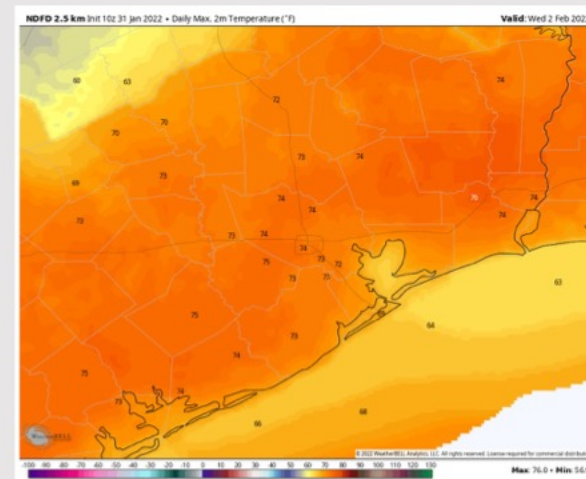
**Temps:** Highs anticipated to sit in the low to mid 60s F today.

**Visibility:** Some data is picking up on potential fog Wed AM. Sea fog looks to be possible as winds are out of the SE and are not elevated. Will need to fine tune details in future updates.

## Precip Forecast: 11 PM CT



Wind Speed  
12 PM CT



High Temps  
Wednesday