

Houston Pilots Forecast Package



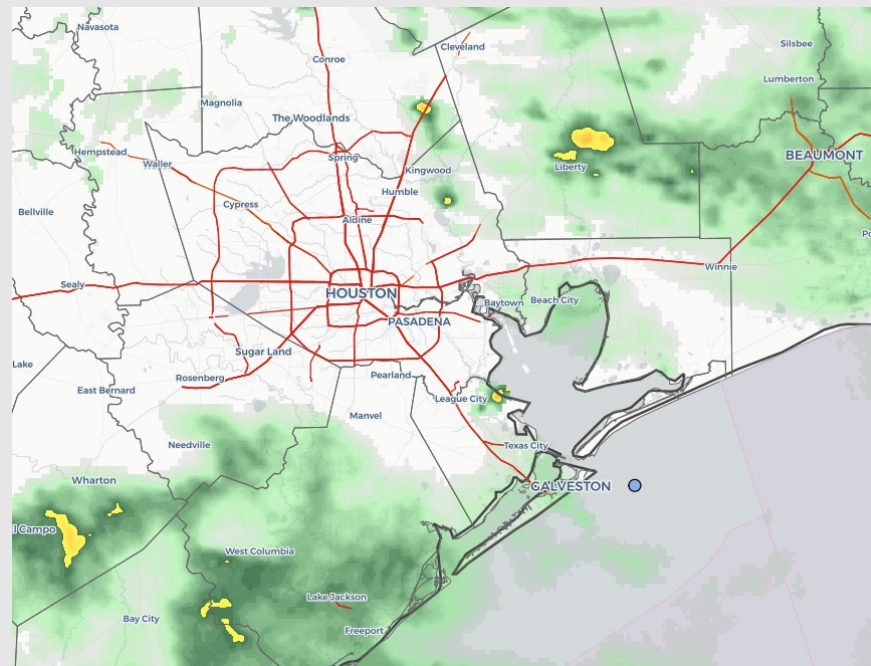
Updated: 2:00 PM CT

Monday, January 24, 2022

Forecaster: Vince Bryan

Weather Headlines

- Rain showers will continue to hang around the area through the early morning hours of tomorrow.
- Mist/ drizzle hanging around late tonight/ tomorrow morning may reduce visibilities at times but overall lower confidence.
- Peak of winds will be late Tuesday night through mid-day Wednesday.



Radar/ NWS Alerts: 2:00 PM CT



As always, please do not hesitate to reach out to us with any forecast questions via the chat option on the Weather Porthole or our on-call number, **(317)-560-8122** press 1 for forecast questions.

Houston Pilots Visibility Report



Time	01-24- 2022 Mon 1pm	01-24- 2022 Mon 2pm	01-24- 2022 Mon 3pm	01-24- 2022 Mon 4pm	01-24- 2022 Mon 5pm	01-24- 2022 Mon 6pm	01-24- 2022 Mon 7pm	01-24- 2022 Mon 8pm	01-24- 2022 Mon 9pm	01-24- 2022 Mon 10pm	01-24- 2022 Mon 11pm	01-25- 2022 Tue 12am	01-25- 2022 Tue 1am	01-25- 2022 Tue 2am	01-25- 2022 Tue 3am	01-25- 2022 Tue 4am	01-25- 2022 Tue 5am	01-25- 2022 Tue 6am	01-25- 2022 Tue 7am	01-25- 2022 Tue 8am	01-25- 2022 Tue 9am	01-25- 2022 Tue 10am	01-25- 2022 Tue 11am	01-25- 2022 Tue 12pm	01-25- 2022 Tue 1pm	01-25- 2022 Tue 2pm	01-25- 2022 Tue 3pm	01-25- 2022 Tue 4pm	01-25- 2022 Tue 5pm	01-25- 2022 Tue 6pm	01-25- 2022 Tue 7pm	01-25- 2022 Tue 8pm	01-25- 2022 Tue 9pm	01-25- 2022 Tue 10pm	01-25- 2022 Tue 11pm	01-26- 2022 Wed 12am			
Houston Pilots N - 610 Bridge	9.048	8.156	7.829	7.670	7.767	7.581	7.581	7.410	7.581	7.581	7.746	7.750	7.684	7.752	7.705	3.948	3.897	3.897	2.636	1.988	3.897	6.920	10.000	10.000	10.000	10.000	10.000	10.000	10.000	10.000	10.000	10.000	10.000	10.000	10.000	10.000	10.000	10.000	
Houston Pilots M - Kinder I	9.048	8.016	7.852	7.680	7.767	7.581	7.581	7.577	7.581	7.581	7.746	7.806	7.684	7.752	7.705	3.948	4.279	4.279	3.575	3.532	5.233	6.920	10.000	10.000	10.000	10.000	10.000	10.000	10.000	10.000	10.000	10.000	10.000	10.000	10.000	10.000	10.000	10.000	
Houston Pilots L - Greens Bayou	9.027	8.076	8.108	7.703	7.767	7.581	7.581	7.581	7.614	7.581	7.746	7.823	7.684	7.752	7.705	3.948	5.930	6.214	5.733	5.932	6.885	7.706	10.000	10.000	10.000	10.000	10.000	10.000	10.000	10.000	10.000	10.000	10.000	10.000	10.000	10.000	10.000	10.000	
Houston Pilots K - Shell Crude	9.028	8.076	8.108	7.957	7.767	7.581	7.581	7.581	7.614	7.581	7.746	7.823	7.716	7.770	7.705	3.948	8.033	8.033	8.033	8.988	8.988	8.988	10.000	10.000	10.000	10.000	10.000	10.000	10.000	10.000	10.000	10.000	10.000	10.000	10.000	10.000	10.000	10.000	
Houston Pilots J - Lynchburg Ferries	8.903	8.223	8.325	7.957	7.767	7.581	7.581	7.581	7.614	7.581	7.732	7.823	7.716	7.770	7.690	3.948	8.033	8.033	8.033	8.988	8.988	8.988	10.000	10.000	10.000	10.000	10.000	10.000	10.000	10.000	10.000	10.000	10.000	10.000	10.000	10.000	10.000	10.000	
Houston Pilots I - Exxon 3	8.656	8.411	8.152	8.187	8.238	7.581	7.581	7.581	7.614	7.581	7.705	7.823	7.779	7.793	7.873	3.244	8.033	8.033	8.988	8.988	8.988	8.988	10.000	10.000	10.000	10.000	10.000	10.000	10.000	10.000	10.000	10.000	10.000	10.000	10.000	10.000	10.000	10.000	
Houston Pilots H - Morgans Point	8.656	8.306	7.770	8.259	8.238	7.581	7.581	7.581	7.614	7.581	7.694	7.823	7.829	7.793	8.016	3.768	8.988	8.988	8.988	8.988	8.988	8.988	10.000	10.000	10.000	10.000	10.000	10.000	10.000	10.000	10.000	10.000	10.000	10.000	10.000	10.000	10.000	10.000	
Houston Pilots G - 75/76	8.656	7.581	7.810	8.259	8.238	7.581	7.581	7.581	7.606	7.581	7.615	7.800	7.829	7.793	8.068	3.948	8.988	8.988	8.988	8.988	8.988	8.988	10.000	10.000	10.000	10.000	10.000	10.000	10.000	10.000	10.000	10.000	10.000	10.000	10.000	10.000	10.000	10.000	
Houston Pilots F - 63/64	8.198	7.672	7.990	8.326	8.238	7.581	7.581	7.581	7.581	7.581	7.615	7.800	7.829	7.793	8.068	3.948	8.988	8.988	8.988	8.988	8.988	8.988	10.000	10.000	10.000	10.000	10.000	10.000	10.000	10.000	10.000	10.000	10.000	10.000	10.000	10.000	10.000	10.000	
Houston Pilots E - 61/62	7.664	7.672	8.432	8.367	7.927	7.581	7.581	7.585	7.581	7.581	7.615	7.697	7.829	7.693	8.068	4.530	8.988	8.988	8.988	8.988	8.988	8.988	10.000	10.000	10.000	10.000	10.000	10.000	10.000	10.000	10.000	10.000	10.000	10.000	10.000	10.000	10.000	10.000	
Houston Pilots D - 37/38	7.581	8.031	8.538	8.518	7.632	7.581	7.896	7.841	7.841	7.867	7.581	7.581	7.638	7.581	7.938	4.902	8.988	8.988	8.988	8.988	8.988	8.988	9.862	10.000	10.000	10.000	10.000	10.000	10.000	10.000	10.000	10.000	10.000	10.000	10.000	10.000	10.000	10.000	
Houston Pilots C - 25/26	7.087	8.144	8.538	8.518	8.447	7.952	8.078	8.250	8.538	8.432	7.581	7.581	7.581	7.581	7.822	4.902	8.988	8.988	8.988	8.988	8.988	8.988	8.988	10.000	10.000	10.000	10.000	10.000	10.000	10.000	10.000	10.000	10.000	10.000	10.000	10.000	10.000	10.000	10.000
Houston Pilots B - 11/12	7.413	8.144	8.673	8.518	8.449	8.323	8.101	8.476	9.037	8.479	7.581	7.581	7.581	7.581	7.805	4.902	8.988	8.988	8.988	8.988	8.988	8.988	8.988	10.000	10.000	10.000	10.000	10.000	10.000	10.000	10.000	10.000	10.000	10.000	10.000	10.000	10.000	10.000	
Houston Pilots A - 1 & 2 Bravo	8.337	8.260	8.777	8.590	8.449	8.487	8.363	8.798	9.171	8.637	8.202	7.581	7.581	7.583	7.855	3.948	8.988	8.988	8.988	8.988	8.988	8.988	8.988	9.822	9.808	10.000	10.000	10.000	10.000	10.000	10.000	9.033	10.000	10.000	9.808	9.808	9.808		

Reduced visibilities will be possible under pockets of precipitation into tomorrow AM, but fog is not favored.

Houston Pilots Extended Range Visibility Report



Thursday, 1/27/22

Continued winds from the NE should limit sea fog potential, keeping an eye on potential “inland fog” however, currently not favoring fog on Thu.

Confidence



Saturday, 1/29/22

No fog is anticipated on Saturday.

Confidence



Friday, 1/28/22

With elevated winds once again out of the north, currently not anticipating fog for our stations on Fri.

Confidence



Daily Fog Chance

Thursday AM	Unlikely
Friday AM	Unlikely
Saturday AM	Unlikely

Houston Pilots: Mon. 1/24/2022

Forecast Discussion

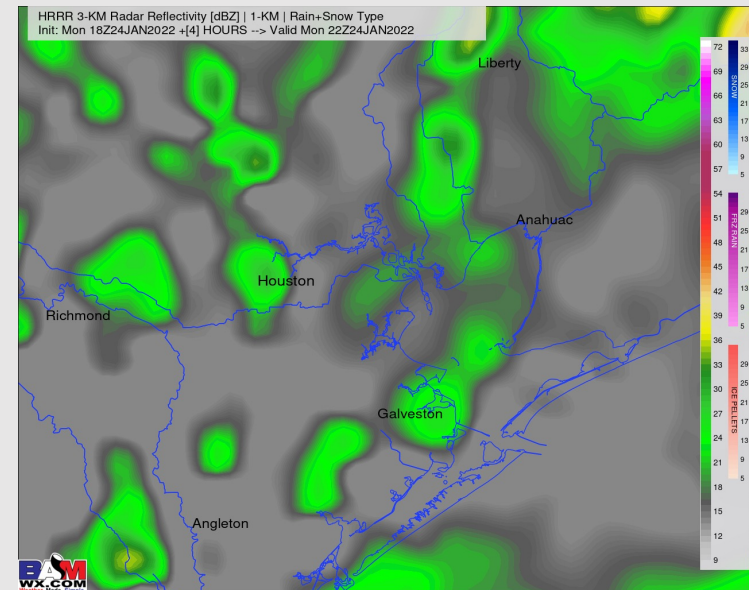
Precip: Scattered showers around the area will continue through the rest of the evening hours, likely not winding down until the pre-dawn hours of Tuesday. Coverage will slowly turn more isolated, and intensity will be light to at times moderate.

Wind: Sustained winds are favored to come from the ESE at 13-18 MPH with gusts 18-23 MPH for the rest of the evening and overnight hours. There may be a brief period of time in the 8-10 PM window of 20-25 MPH gusts.

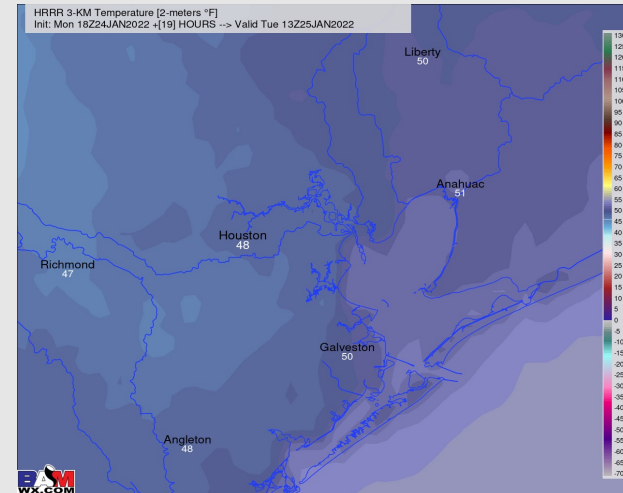
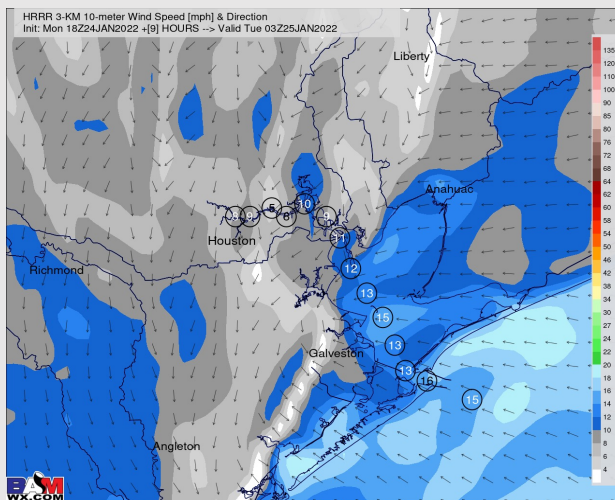
Temps: Lows fall back near 50F.

Visibility: Cannot rule out some lower visibilities from about 8 PM tonight through 4 AM tomorrow morning. Current thinking is that this will be more of a mist/ drizzle during this time period vs fog.

Precip Forecast: 5 PM CT



Wind Speed 9 PM CT



Low Temps Tonight

Houston Pilots: Tue. 1/25/2022

Forecast Discussion

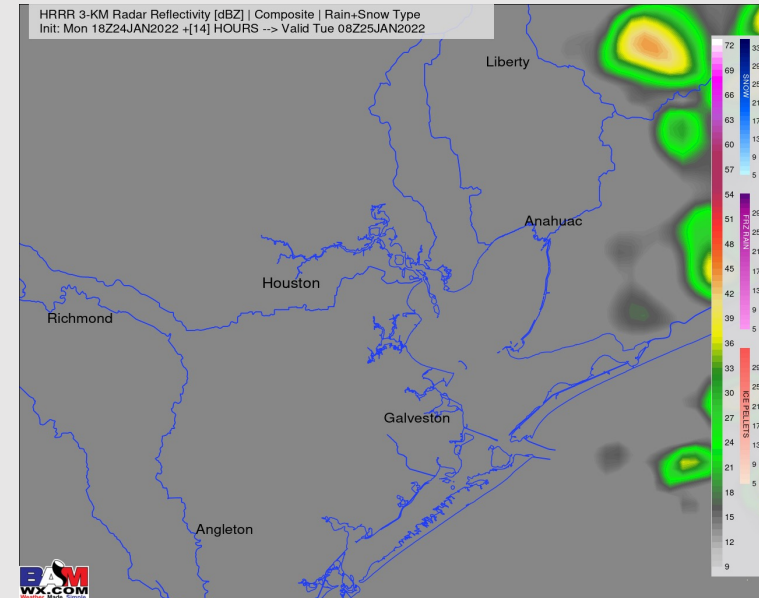
Precip: A lingering light rain shower/ drizzle can linger through about 4 AM before dry air beings to filter behind the low pressure system, leading to dry conditions the remainder of the day.

Wind: Winds will generally be out of the NNE throughout the day on Monday. Sustained winds look to be around 13 – 18 MPH (slightly weaker towards Buffalo Bayou) with gusts around 18 – 23 MPH possible. Winds will pick up a bit towards midnight where stations towards and including the boarding station can see sustained winds around 15 – 20 MPH with gusts around 25 MPH.

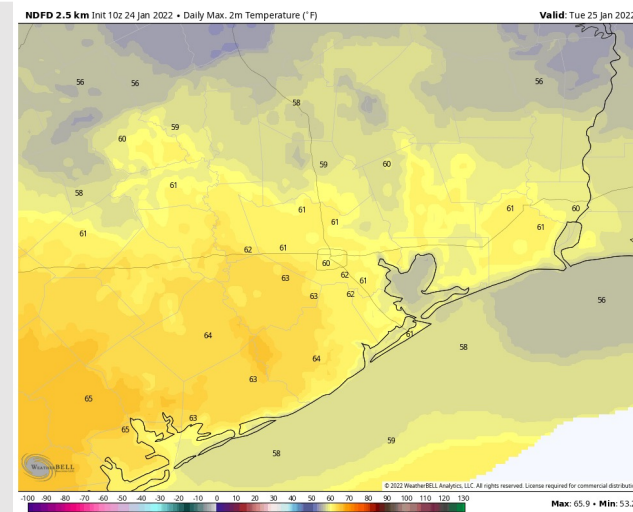
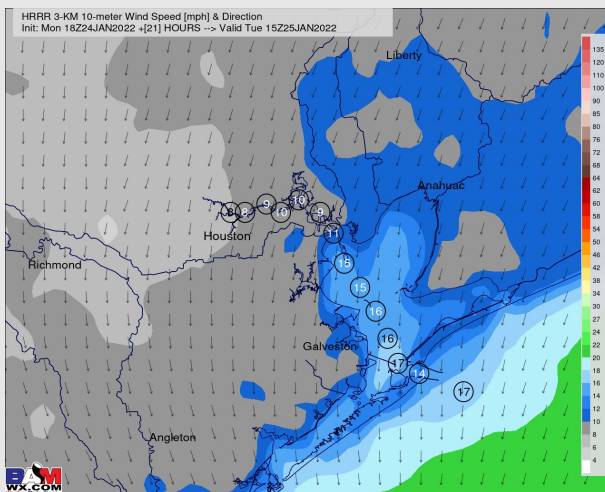
Temps: High temps on Tue sit in the low 60s F.

Visibility: Best fog potential looks to set up West of our stations on TUE AM with a mist/drizzle being the biggest threat as discussed above

Precip Forecast: 3 AM CT



Wind Speed 9 AM CT



High Temps Tuesday

Houston Pilots: Wed. 1/26/2022

Forecast Discussion

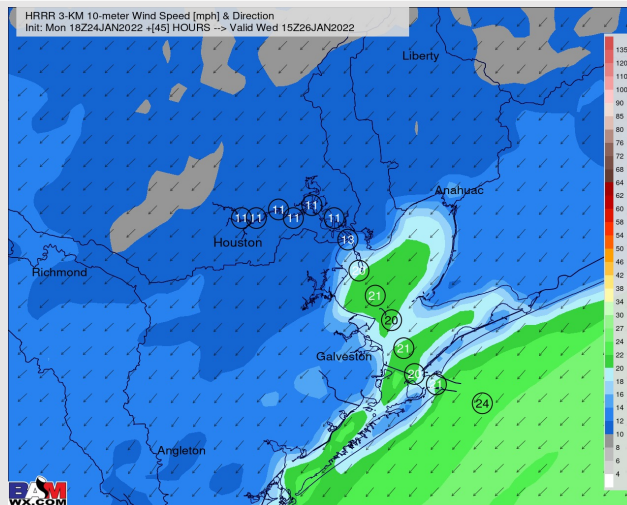
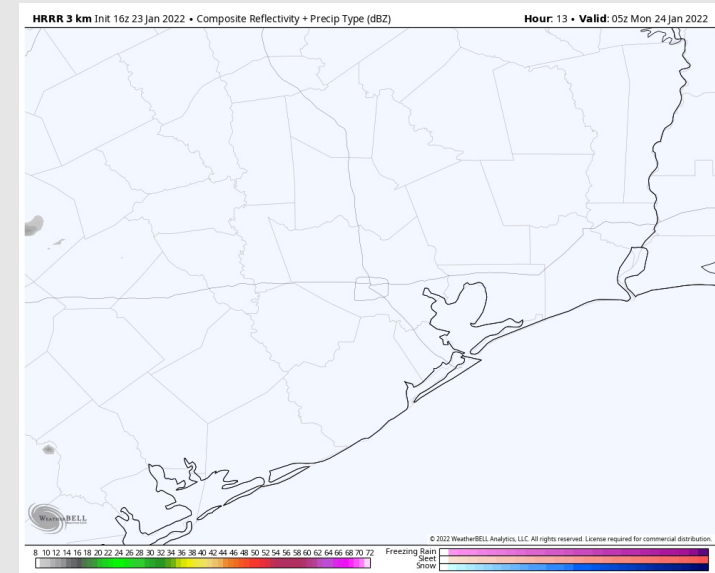
Precip: Wednesday looks to be a dry day.

Wind: Winds beyond midnight look to continue to pick up with sustained winds closer to 15 – 25 MPH for much of the morning hours. Gusts approaching 30 MPH cannot be ruled out. Wind speeds will slowly be waning into the afternoon with closer to 8 – 13 MPH sustained winds late Wed night.

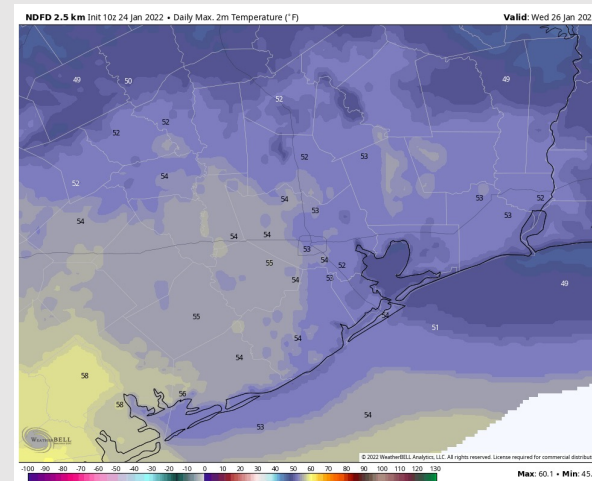
Temps: High temps will be in the lower 50s on Wednesday.

Visibility: Not anticipating fog for Wednesday.

Precip Forecast: 1 PM CT



Wind Speed:
9 AM CT



High Temps
Wednesday