

Houston Pilots Forecast Package



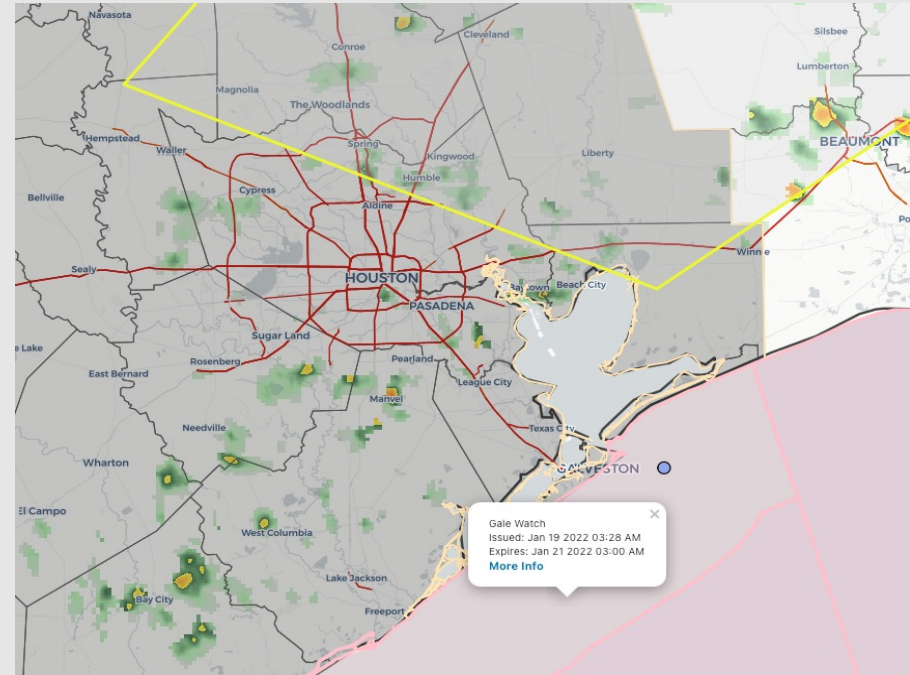
Updated: 1:00 PM CT

Wednesday, January 19, 2022

Forecaster: Vince Bryan

Weather Headlines

- Eyeing a cold front to work through the area tonight in the 10 PM WED – 1 AM THU window. With this front will come a line of showers and thunderstorms. Winds will turn out of the N and become strong (gusts 30-40 MPH possible). A few locally stronger thunderstorms cannot be ruled out along the front.
- A Gale Watch is in effect through Friday 3 AM due to the stronger winds. Winds will continue coming out of the NE behind this front, limiting any fog potential into the weekend.
- Next shot of rain looking to come into the area Monday afternoon/evening.



Radar/ NWS Alerts: 1:00 PM CT



As always, please do not hesitate to reach out to us with any forecast questions via the chat option on the Weather Porthole or our on-call number, **(317)-560-8122** press 1 for forecast questions.

Houston Pilots Visibility Report



Time	01-19-2022 Wed 11am	01-19-2022 Wed 12pm	01-19-2022 Wed 1pm	01-19-2022 Wed 2pm	01-19-2022 Wed 3pm	01-19-2022 Wed 4pm	01-19-2022 Wed 5pm	01-19-2022 Wed 6pm	01-19-2022 Wed 7pm	01-19-2022 Wed 8pm	01-19-2022 Wed 9pm	01-19-2022 Wed 10pm	01-19-2022 Wed 11pm	01-20-2022 Thu 12am	01-20-2022 Thu 1am	01-20-2022 Thu 2am	01-20-2022 Thu 3am	01-20-2022 Thu 4am	01-20-2022 Thu 5am	01-20-2022 Thu 6am	01-20-2022 Thu 7am	01-20-2022 Thu 8am	01-20-2022 Thu 9am	01-20-2022 Thu 10am	01-20-2022 Thu 11am	01-20-2022 Thu 12pm	01-20-2022 Thu 1pm	01-20-2022 Thu 2pm	01-20-2022 Thu 3pm	01-20-2022 Thu 4pm	01-20-2022 Thu 5pm	01-20-2022 Thu 6pm	01-20-2022 Thu 7pm	01-20-2022 Thu 8pm	01-20-2022 Thu 9pm	01-20-2022 Thu 10pm	
Houston Pilots N - 610 Bridge	10.000	10.000	10.000	10.000	10.000	10.000	10.000	10.000	10.000	10.000	10.000	10.000	10.000	10.000	10.000	10.000	10.000	10.000	10.000	10.000	10.000	10.000	10.000	10.000	10.000	10.000	10.000	10.000	10.000	10.000	10.000	10.000	10.000	10.000	10.000	10.000	10.000
Houston Pilots M - Kinder 1	10.000	10.000	10.000	10.000	10.000	10.000	10.000	10.000	10.000	10.000	10.000	10.000	10.000	10.000	10.000	10.000	10.000	10.000	10.000	10.000	10.000	10.000	10.000	10.000	10.000	10.000	10.000	10.000	10.000	10.000	10.000	10.000	10.000	10.000	10.000	10.000	10.000
Houston Pilots L - Greens Bayou	10.000	10.000	10.000	10.000	10.000	10.000	10.000	10.000	10.000	10.000	10.000	10.000	10.000	10.000	10.000	10.000	10.000	10.000	10.000	10.000	10.000	10.000	10.000	10.000	10.000	10.000	10.000	10.000	10.000	10.000	10.000	10.000	10.000	10.000	10.000	10.000	10.000
Houston Pilots K - Shell Crude	10.000	10.000	10.000	10.000	10.000	10.000	10.000	10.000	10.000	10.000	10.000	10.000	10.000	10.000	10.000	10.000	10.000	10.000	10.000	10.000	10.000	10.000	10.000	10.000	10.000	10.000	10.000	10.000	10.000	10.000	10.000	10.000	10.000	10.000	10.000	10.000	10.000
Houston Pilots J - Lynchburg Ferries	10.000	10.000	10.000	10.000	10.000	10.000	10.000	10.000	10.000	10.000	10.000	10.000	10.000	10.000	10.000	10.000	10.000	10.000	10.000	10.000	10.000	10.000	10.000	10.000	10.000	10.000	10.000	10.000	10.000	10.000	10.000	10.000	10.000	10.000	10.000	10.000	10.000
Houston Pilots I - Exxon 3	10.000	10.000	10.000	10.000	10.000	10.000	10.000	10.000	10.000	10.000	10.000	10.000	10.000	10.000	10.000	10.000	10.000	10.000	10.000	10.000	10.000	10.000	10.000	10.000	10.000	10.000	10.000	10.000	10.000	10.000	10.000	10.000	10.000	10.000	10.000	10.000	10.000
Houston Pilots H - Morgans Point	10.000	10.000	10.000	10.000	10.000	10.000	10.000	10.000	10.000	10.000	10.000	10.000	10.000	10.000	10.000	10.000	10.000	10.000	10.000	10.000	10.000	10.000	10.000	10.000	10.000	10.000	10.000	10.000	10.000	10.000	10.000	10.000	10.000	10.000	10.000	10.000	10.000
Houston Pilots G - 75/76	10.000	10.000	10.000	10.000	10.000	10.000	10.000	10.000	10.000	10.000	10.000	10.000	10.000	10.000	10.000	10.000	10.000	10.000	10.000	10.000	10.000	10.000	10.000	10.000	10.000	10.000	10.000	10.000	10.000	10.000	10.000	10.000	10.000	10.000	10.000	10.000	10.000
Houston Pilots F - 63/64	10.000	10.000	10.000	10.000	10.000	10.000	10.000	10.000	10.000	10.000	10.000	10.000	8.380	10.000	10.000	10.000	10.000	10.000	10.000	10.000	10.000	10.000	10.000	10.000	10.000	10.000	10.000	10.000	10.000	10.000	10.000	10.000	10.000	10.000	10.000	10.000	10.000
Houston Pilots E - 51/52	10.000	10.000	10.000	10.000	10.000	10.000	10.000	10.000	10.000	10.000	10.000	10.000	8.604	10.000	10.000	10.000	10.000	10.000	10.000	10.000	10.000	10.000	10.000	10.000	10.000	10.000	10.000	10.000	10.000	10.000	10.000	10.000	10.000	10.000	10.000	10.000	10.000
Houston Pilots D - 37/38	10.000	10.000	10.000	10.000	10.000	10.000	10.000	10.000	10.000	10.000	10.000	10.000	9.038	10.000	10.000	10.000	10.000	10.000	10.000	10.000	10.000	9.640	9.418	8.988	10.000	10.000	10.000	10.000	10.000	10.000	10.000	10.000	10.000	10.000	10.000	10.000	10.000
Houston Pilots C - 25/26	10.000	10.000	10.000	10.000	10.000	10.000	10.000	10.000	10.000	10.000	10.000	9.038	9.038	9.930	10.000	10.000	10.000	10.000	10.000	10.000	10.000	8.988	8.988	8.988	10.000	10.000	10.000	10.000	10.000	10.000	10.000	10.000	10.000	10.000	10.000	10.000	10.000
Houston Pilots B - 11/12	10.000	10.000	10.000	10.000	10.000	10.000	10.000	10.000	10.000	10.000	9.082	9.038	9.038	6.938	10.000	10.000	10.000	10.000	10.000	8.988	8.988	8.988	8.988	8.988	10.000	10.000	10.000	10.000	10.000	10.000	10.000	10.000	10.000	10.000	10.000	10.000	10.000
Houston Pilots A - 1 & 2 Bravo	10.000	10.000	10.000	10.000	10.000	10.000	10.000	10.000	10.000	9.038	7.924	7.924	9.038	7.603	10.000	10.000	9.822	9.822	8.988	8.988	8.988	8.988	8.988	8.988	9.033	10.000	10.000	10.000	10.000	10.000	10.000	10.000	10.000	10.000	10.000	10.000	

See Wed slide below for more info on reduced visibility potential.

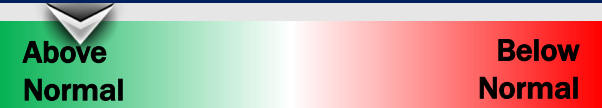
Houston Pilots Extended Range Visibility Report



Saturday, 1/22/22

Sea fog continues to not be in the forecast for the start of the weekend given the offshore flow anticipated.

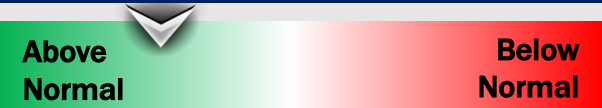
Confidence



Monday, 1/24/22

With a NE flow, currently not anticipating fog for our stations on Monday.

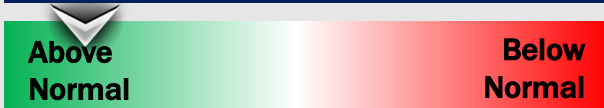
Confidence



Sunday, 1/23/22

Not anticipating fog on Sunday either.

Confidence



Daily Fog Chance

Saturday AM	Unlikely
Sunday AM	Unlikely
Monday AM	Unlikely

Houston Pilots: Wed. 1/19/2022

Forecast Discussion

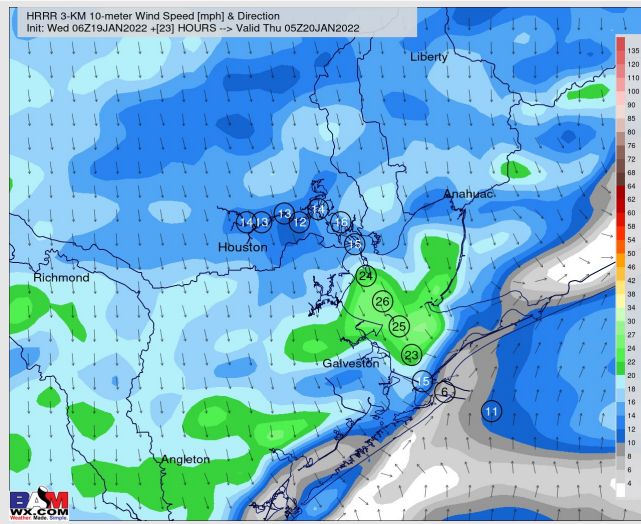
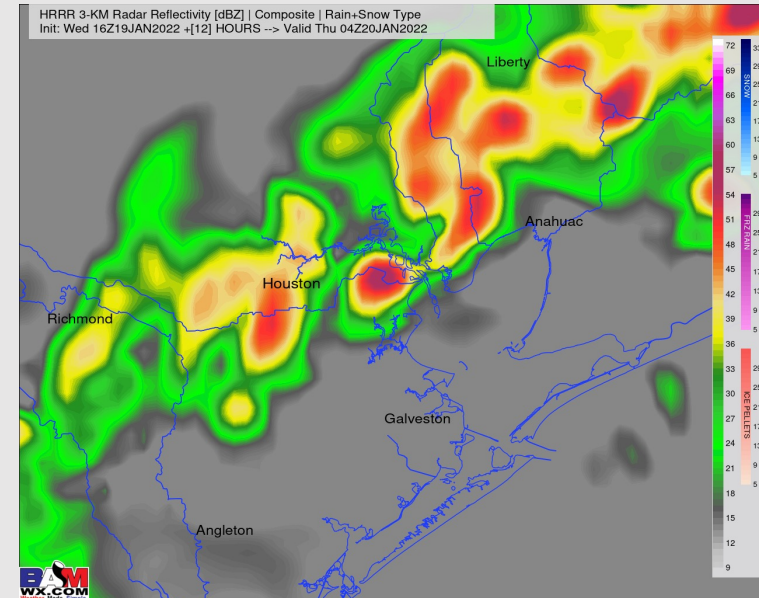
Precip: Scattered showers have arrived a bit ahead of schedule. Expecting coverage to continue to remain hit and miss out through the evening hours. Chances will increase with the main line of showers/thunderstorms coming through 10 PM WED – 1 AM THU. A few stronger thunderstorms with gusty winds, lightning, and a heavier downpour will be possible as the front passes through. Reduced visibilities will also be possible within the heaviest precip.

Wind: Sustained winds look to be 8-13 MPH out of the SSW for rest of the day with some gusts 13-18 MPH possible. Winds then quickly shift out of the NNE at 20-30 MPH with the frontal wind shift in the 10 PM – 1 AM window. With any stronger storms, gusts 30-40 MPH will be possible. These gusts will then be likely at the boarding station into the overnight.

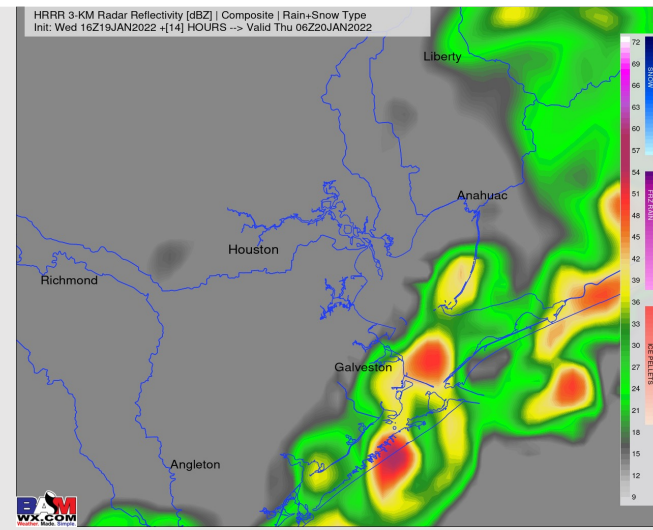
Temps: Lows will fall back into the mid 40s by daybreak tomorrow.

Visibility: Fog is not favored this evening. We will continue to keep an eye on things but as of right now, seeing very limited support for any patchy fog/ reduced visibility development in the bay area out ahead of the front.

Precip Forecast: 10 PM CT



Wind Speed
11 PM CT



Precip
Forecast 12
AM CT THU

Houston Pilots: *Thu. 1/20/2022*

Forecast Discussion

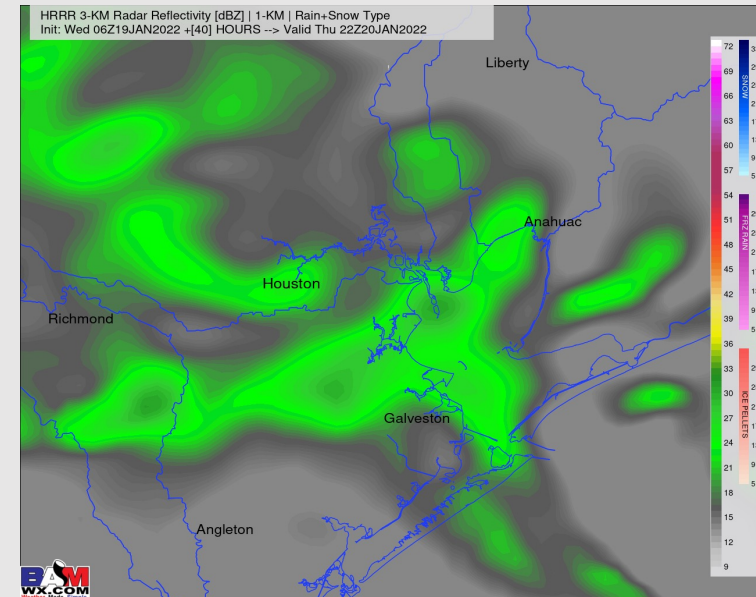
Precip: Precip with the main front should be out of the area by ~2 AM. A “second wave” behind the front looks to bring more showers to the area in the afternoon hours of Thu. Slightly lower confidence on exact timing, but favoring for this wave to creep into the area in the 1-3 PM timeframe. Precipitation Thursday afternoon and evening looks to stay on the lighter side. While not favored, a very brief period of a wintry mix cannot be ruled out Thursday night.

Wind: Sustained winds look to continue 23-28 MPH out of the NNE into Thu AM. Gusts 30-35 MPH still possible at the boarding station in the AM. After sundown, sustained winds look to be closer to 20-25 MPH with gusts 25-30 MPH at the boarding station through midnight.

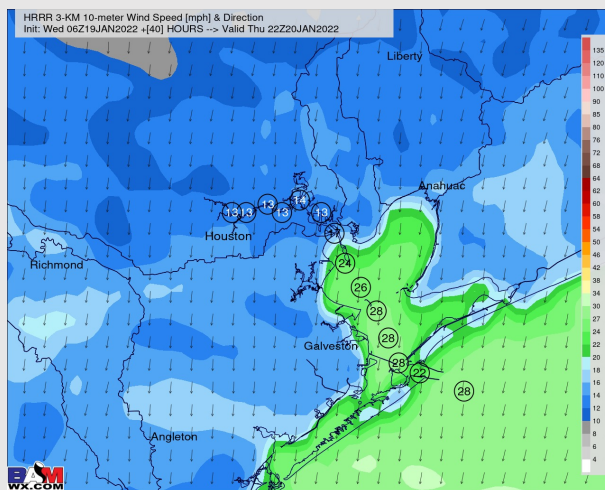
Temps: Temps will fall throughout the day on Thursday, likely reaching the upper 30s by sunset.

Visibility: Not anticipating fog for our stations on Thursday.

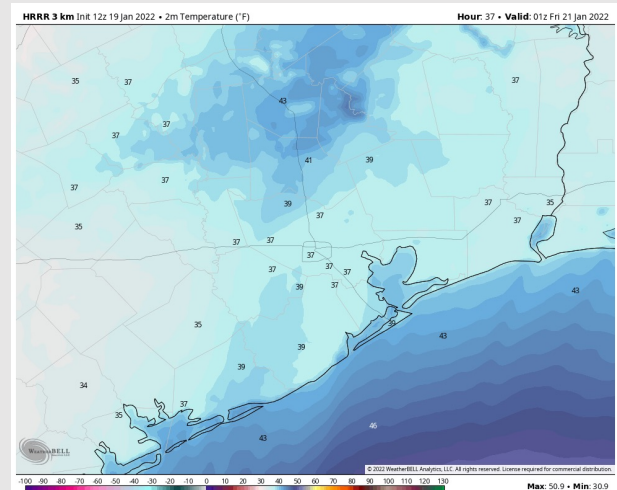
Precip Forecast: 4 PM CT



Wind Speed:
5 PM CT



Temps 7 PM
CT THU



Houston Pilots: *Fri. 1/21/2022*

Forecast Discussion

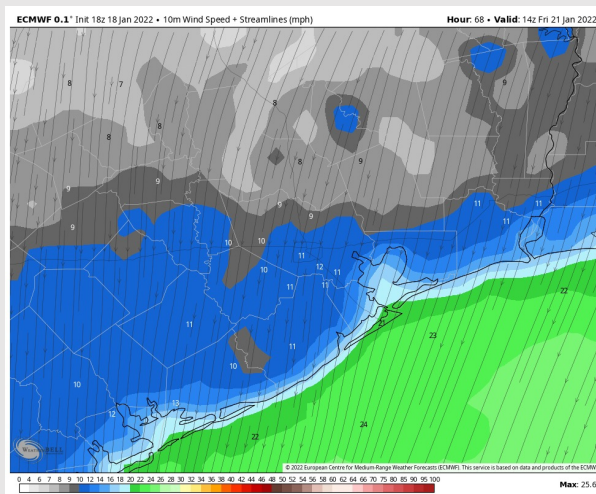
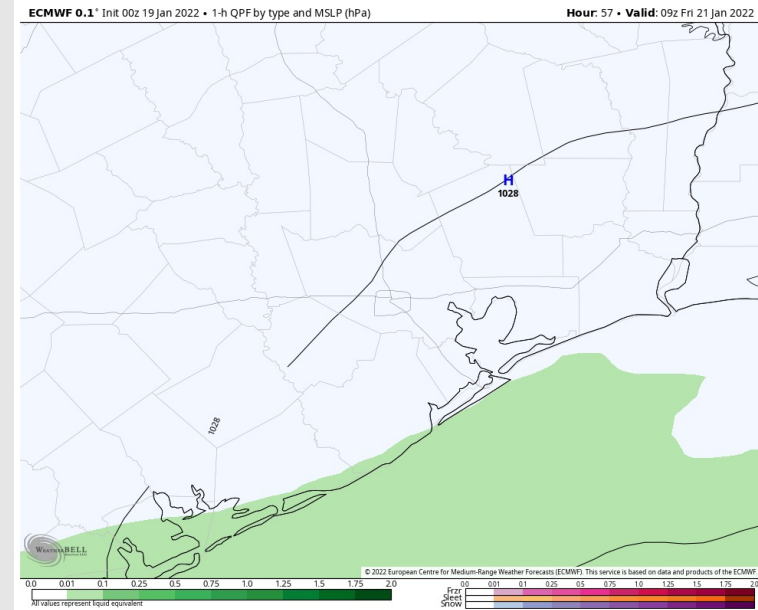
Precip: A light shower or two will be possible just after midnight into the pre-dawn hours of Friday. Anticipating overall dry conditions for our stations on Fri late morning into the afternoon hours.

Wind: Sustained winds look to be 20-25 MPH out of the NNE with gusts 25-30 MPH possible at the boarding station for most of the pre-dawn hours. By around 8 AM, sustained winds look to be 15-20 MPH out of the NE with gusts 20-25 MPH at the boarding station through the rest of the day.

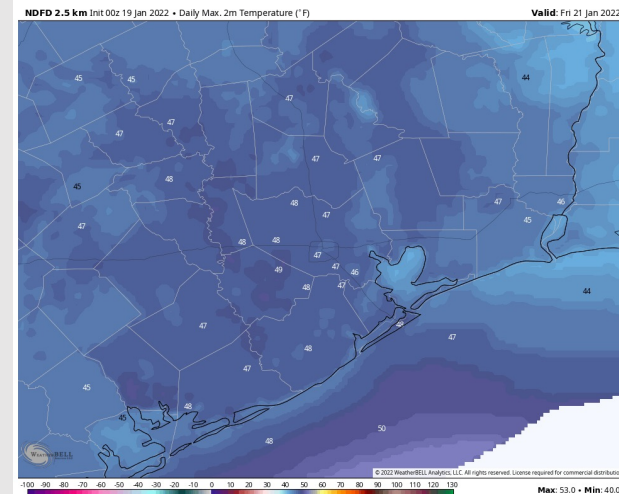
Temps: High Temps Friday look to only get into the upper 40s F.

Visibility: Not anticipating fog for our stations on Fri with elevated winds out of the NE continuing.

Precip Forecast: 5 AM CT

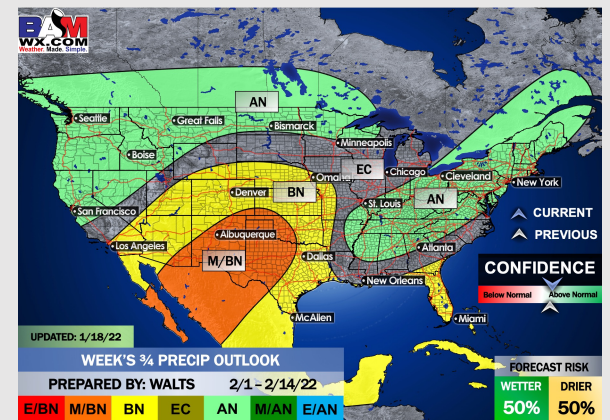
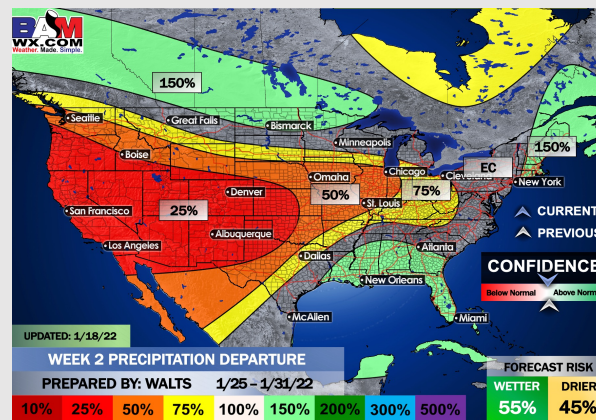
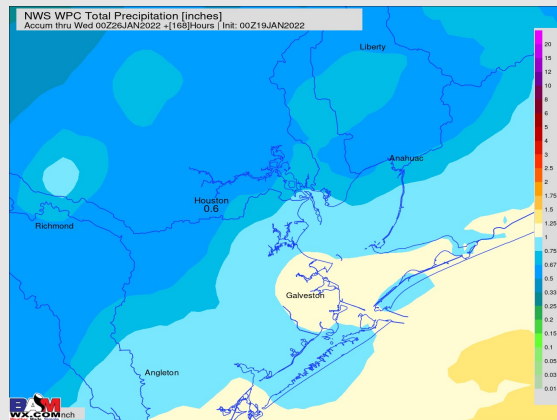
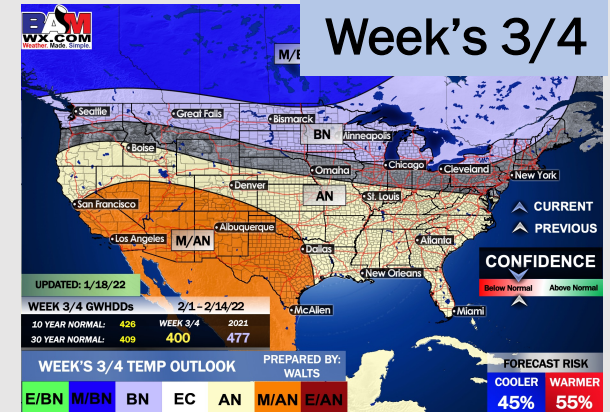
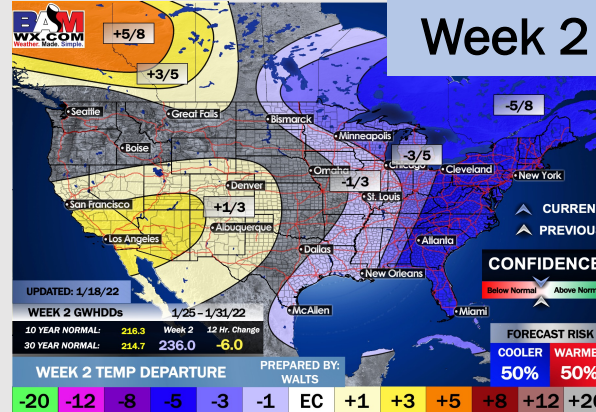
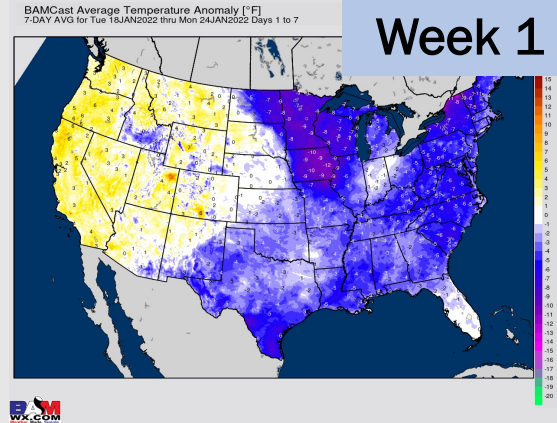


Wind Speed
8 AM CT



High Temps
Friday

Houston Pilots: 1/19/22



- Showers/thunderstorms anticipated Wed PM into Thu AM with the upcoming front. Scattered showers possible into Fri AM. Anticipating dry conditions for the next several day after this period.
- The week 2 timeframe is expected to have slightly below normal temperatures with near normal to slightly above normal risks for precip.
- Right now, we are favoring above normal risks for temperatures and slightly below normal risks for precip for the weeks 3 and 4 timeframe.