

Houston Pilots Forecast Package



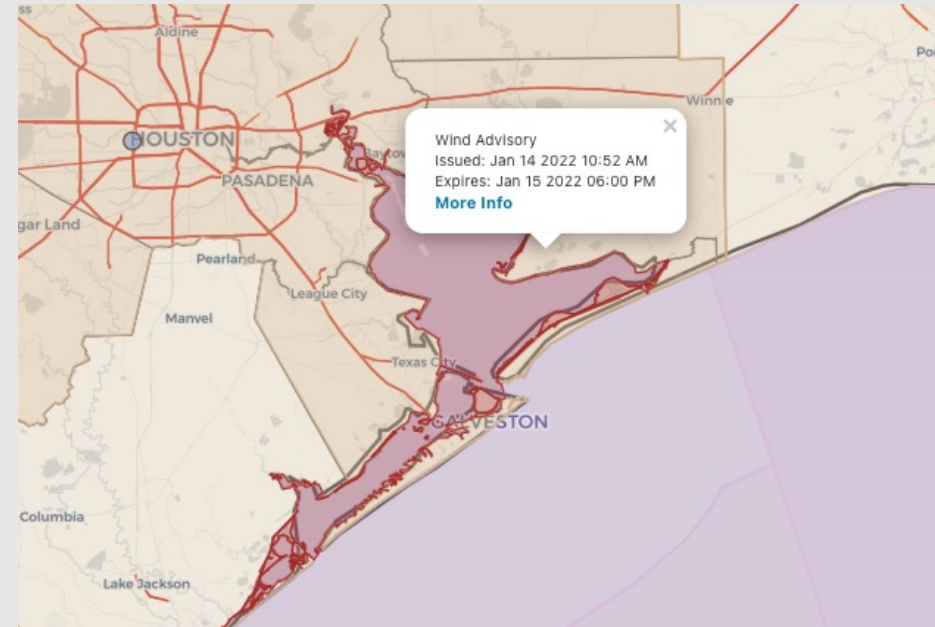
Updated: 4:00 PM CT

Forecasters: Carolina Cardona
& Caroline Klare

Friday, January 14, 2022

Weather Headlines

- Cold front moves through tomorrow morning with light rain chances.
- Can't rule out some patchy fog out ahead of the front.
- Winds pick up after the front passes tomorrow. A Gale Warning is currently in effect.



Radar/ NWS Alerts: 4:00 PM CT



As always, please do not hesitate to reach out to us with any forecast questions via the chat option on the Weather Porthole or our on-call number, **(317)-560-8122** press 1 for forecast questions.

Houston Pilots Visibility Report



Time	01-14-2022 Fri 2pm	01-14-2022 Fri 3pm	01-14-2022 Fri 4pm	01-14-2022 Fri 5pm	01-14-2022 Fri 6pm	01-14-2022 Fri 7pm	01-14-2022 Fri 8pm	01-14-2022 Fri 9pm	01-14-2022 Fri 10pm	01-14-2022 Fri 11pm	01-15-2022 Sat 12am	01-15-2022 Sat 1am	01-15-2022 Sat 2am	01-15-2022 Sat 3am	01-15-2022 Sat 4am	01-15-2022 Sat 5am	01-15-2022 Sat 6am	01-15-2022 Sat 7am	01-15-2022 Sat 8am	01-15-2022 Sat 9am	01-15-2022 Sat 10am	01-15-2022 Sat 11am	01-15-2022 Sat 12pm	01-15-2022 Sat 1pm	01-15-2022 Sat 2pm	01-15-2022 Sat 3pm	01-15-2022 Sat 4pm	01-15-2022 Sat 5pm	01-15-2022 Sat 6pm	01-15-2022 Sat 7pm	01-15-2022 Sat 8pm	01-15-2022 Sat 9pm	01-15-2022 Sat 10pm	01-15-2022 Sat 11pm	01-16-2022 Sun 12am	01-16-2022 Sun 1am		
Houston Pilots N - 610 Bridge	10.000	10.000	10.000	10.000	10.000	10.000	10.000	10.000	10.000	10.000	10.000	10.000	10.000	10.000	10.000	10.000	10.000	10.000	10.000	10.000	10.000	10.000	10.000	10.000	10.000	10.000	10.000	10.000	10.000	10.000	10.000	10.000	10.000	10.000	10.000	10.000	10.000	10.000
Houston Pilots M - Kinder 1	10.000	10.000	10.000	10.000	10.000	10.000	10.000	10.000	10.000	10.000	10.000	10.000	10.000	10.000	10.000	10.000	10.000	10.000	10.000	10.000	10.000	10.000	10.000	10.000	10.000	10.000	10.000	10.000	10.000	10.000	10.000	10.000	10.000	10.000	10.000	10.000	10.000	10.000
Houston Pilots L - Greens Bayou	10.000	10.000	10.000	10.000	10.000	10.000	10.000	10.000	10.000	10.000	10.000	10.000	10.000	10.000	10.000	10.000	10.000	10.000	10.000	10.000	10.000	10.000	10.000	10.000	10.000	10.000	10.000	10.000	10.000	10.000	10.000	10.000	10.000	10.000	10.000	10.000	10.000	10.000
Houston Pilots K - Shell Crude	10.000	10.000	10.000	10.000	10.000	10.000	10.000	10.000	10.000	10.000	10.000	10.000	10.000	10.000	10.000	10.000	10.000	10.000	10.000	10.000	10.000	10.000	10.000	10.000	10.000	10.000	10.000	10.000	10.000	10.000	10.000	10.000	10.000	10.000	10.000	10.000	10.000	10.000
Houston Pilots J - Lynchburg Ferries	10.000	10.000	10.000	10.000	10.000	10.000	10.000	10.000	10.000	10.000	10.000	10.000	10.000	10.000	10.000	10.000	10.000	10.000	10.000	10.000	10.000	10.000	10.000	10.000	10.000	10.000	10.000	10.000	10.000	10.000	10.000	10.000	10.000	10.000	10.000	10.000	10.000	10.000
Houston Pilots I - Exxon 3	10.000	10.000	10.000	10.000	10.000	10.000	10.000	10.000	10.000	10.000	10.000	10.000	10.000	10.000	10.000	10.000	10.000	10.000	10.000	10.000	10.000	10.000	10.000	10.000	10.000	10.000	10.000	10.000	10.000	10.000	10.000	10.000	10.000	10.000	10.000	10.000	10.000	10.000
Houston Pilots H - Morgans Point	10.000	10.000	10.000	10.000	10.000	10.000	10.000	10.000	10.000	10.000	10.000	10.000	10.000	10.000	10.000	10.000	10.000	10.000	10.000	10.000	10.000	10.000	10.000	10.000	10.000	10.000	10.000	10.000	10.000	10.000	10.000	10.000	10.000	10.000	10.000	10.000	10.000	10.000
Houston Pilots G - 75/76	10.000	10.000	10.000	10.000	10.000	10.000	10.000	10.000	10.000	10.000	10.000	10.000	10.000	10.000	10.000	10.000	10.000	10.000	10.000	10.000	10.000	10.000	10.000	10.000	10.000	10.000	10.000	10.000	10.000	10.000	10.000	10.000	10.000	10.000	10.000	10.000	10.000	10.000
Houston Pilots F - 63/64	10.000	10.000	10.000	10.000	10.000	10.000	10.000	10.000	10.000	10.000	10.000	10.000	10.000	10.000	10.000	10.000	10.000	10.000	10.000	10.000	10.000	10.000	10.000	10.000	10.000	10.000	10.000	10.000	10.000	10.000	10.000	10.000	10.000	10.000	10.000	10.000	10.000	10.000
Houston Pilots E - 51/52	10.000	10.000	10.000	10.000	10.000	10.000	10.000	10.000	10.000	10.000	10.000	10.000	10.000	10.000	10.000	10.000	10.000	10.000	10.000	10.000	10.000	10.000	10.000	10.000	10.000	10.000	10.000	10.000	10.000	10.000	10.000	10.000	10.000	10.000	10.000	10.000	10.000	10.000
Houston Pilots D - 37/38	10.000	10.000	10.000	10.000	10.000	10.000	10.000	10.000	10.000	10.000	10.000	10.000	10.000	10.000	10.000	10.000	10.000	10.000	10.000	10.000	10.000	10.000	10.000	10.000	10.000	10.000	10.000	10.000	10.000	10.000	10.000	10.000	10.000	10.000	10.000	10.000	10.000	10.000
Houston Pilots C - 25/26	10.000	10.000	10.000	10.000	10.000	10.000	10.000	10.000	10.000	10.000	10.000	10.000	10.000	10.000	10.000	10.000	10.000	10.000	10.000	10.000	10.000	10.000	10.000	10.000	10.000	10.000	10.000	10.000	10.000	10.000	10.000	10.000	10.000	10.000	10.000	10.000	10.000	10.000
Houston Pilots B - 11/12	10.000	10.000	10.000	10.000	10.000	10.000	10.000	10.000	10.000	10.000	10.000	10.000	10.000	10.000	10.000	10.000	10.000	10.000	10.000	10.000	10.000	10.000	10.000	10.000	10.000	10.000	10.000	10.000	10.000	10.000	10.000	10.000	10.000	10.000	10.000	10.000	10.000	10.000
Houston Pilots A - 1 & 2 Bravo	10.000	10.000	10.000	10.000	10.000	10.000	10.000	10.000	10.000	10.000	10.000	10.000	10.000	10.000	10.000	10.000	9.585	10.000	10.000	10.000	10.000	10.000	10.000	10.000	10.000	10.000	10.000	10.000	10.000	10.000	10.000	10.000	10.000	10.000	10.000	10.000	10.000	10.000

Check slides below for more info on the low-end fog risk tomorrow AM.

Houston Pilots Extended Range Visibility Report



Monday, 1/16/22

No fog anticipated Monday with northerly winds.

Confidence



Wednesday, 1/18/22

Proceeding another frontal boundary and winds remaining from the south, fog can't be ruled out. Confidence would be low at this distance.

Confidence



Tuesday, 1/17/22

Winds shift back out of the south on TUE but look a bit elevated. Not impossible to see fog at this distance but would lead towards not.

Confidence



Daily Fog Chance

Sunday AM	Unlikely
Monday AM	Possible
Tuesday AM	Possible

Houston Pilots: *Fri. 1/14/2022*

Forecast Discussion

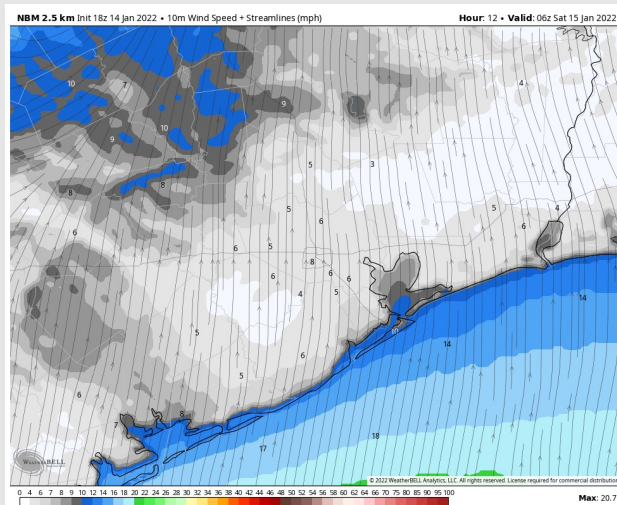
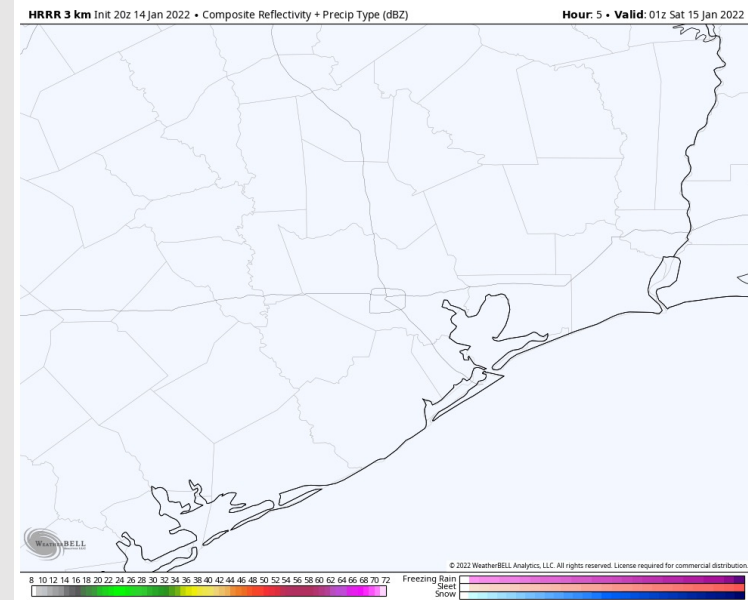
Precip: Dry weather favored for Friday.

Wind: Southerly winds continue at 5 – 10 MPH sustained tonight and will start to pick up slightly towards midnight, especially for the Boarding station where winds will be closer to 8 – 13 MPH sustained late tonight.

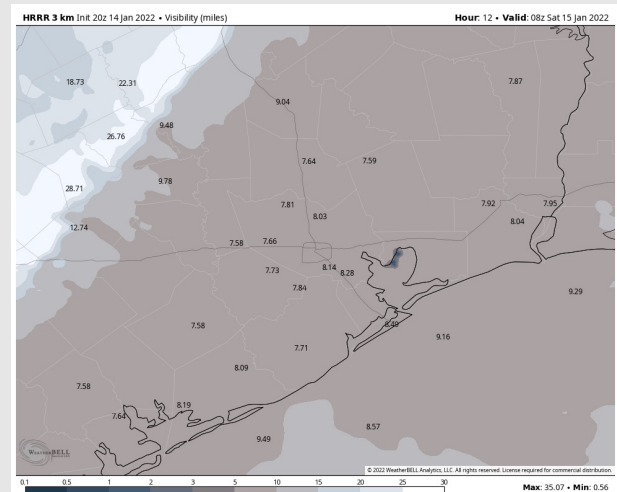
Temps: Lows tonight sit in the upper 50s to lower 60s.

Visibility: Isolated patchy fog/reduced visibilities overnight tonight can't be ruled out for stations south of Morgan's Point. Not currently anticipating widespread fog.

Precip Forecast: 7 PM CT



Wind Speed:
12 AM CT



Visibility: 2 AM CT

Houston Pilots: Sat. 1/15/2022

Forecast Discussion

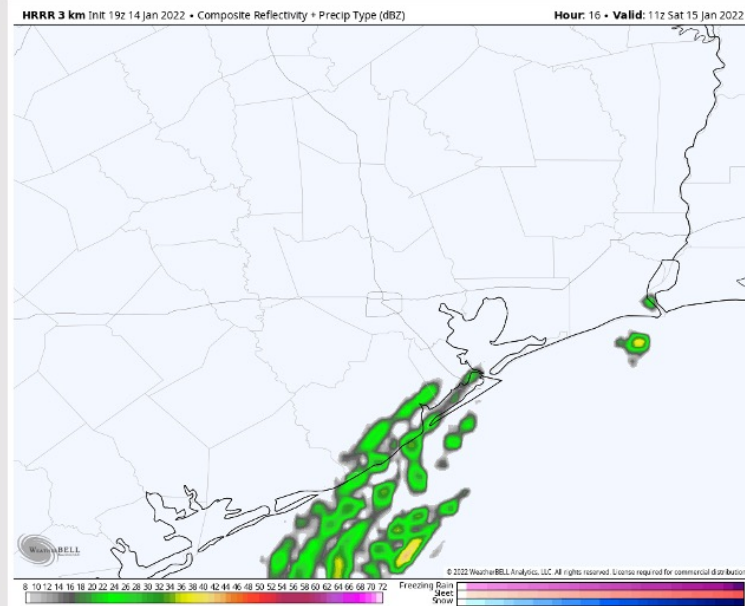
Precip: A few light showers will be possible Saturday AM around the 5-7 AM timeframe as the front passes through. Rain showers are anticipated to be light in nature. Dry conditions are anticipated for the rest of the day.

Wind: Sustained winds in the early Sat AM hours out ahead of the front look to be 5-10 MPH out of the south through the ~4AM timeframe. By this time, winds start to shift out of the NW with the passage of the front and increase rapidly, 20-30 MPH sustained by the ~7AM timeframe, and 30-40 MPH at the boarding station by the 8-9 AM timeframe. Gusts 40-45 MPH possible at the boarding station. Sustained winds continue 30-40 MPH out of the NW with gusts 40-45 MPH at the boarding station through midnight. A few gusts 45-48 MPH after sundown at the boarding station will not be impossible.

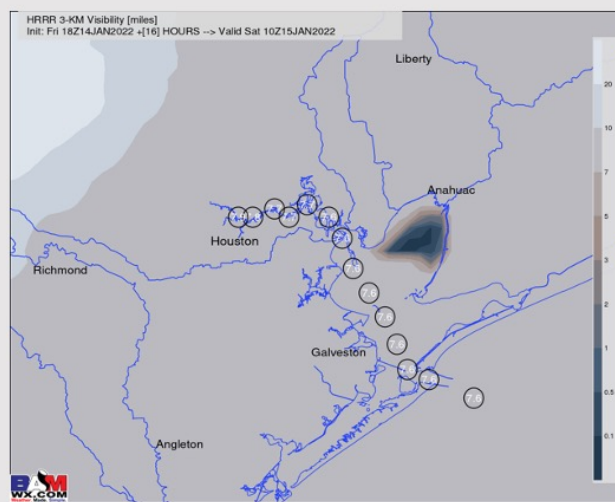
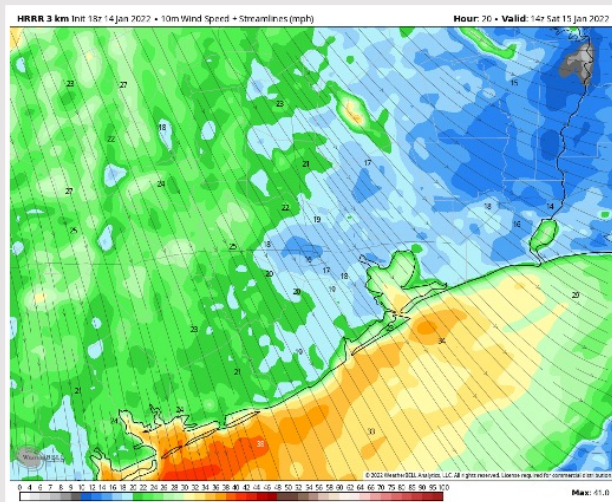
Temps: High temps on Sat anticipated to only get into the mid to upper 50s F.

Visibility: Data has trended less in favor of patchy fog for our stations Sat AM. Current thinking is that patchy fog will be possible, not guaranteed, from the 37/38 station through Morgan's Point from around midnight- 1AM tonight through 3-4 AM Sat AM out ahead of the front. Not anticipating any fog to be dense nor for fog to impact areas around the boarding station.

Precip Forecast: 5 AM CT



Wind Speed
8 AM CT



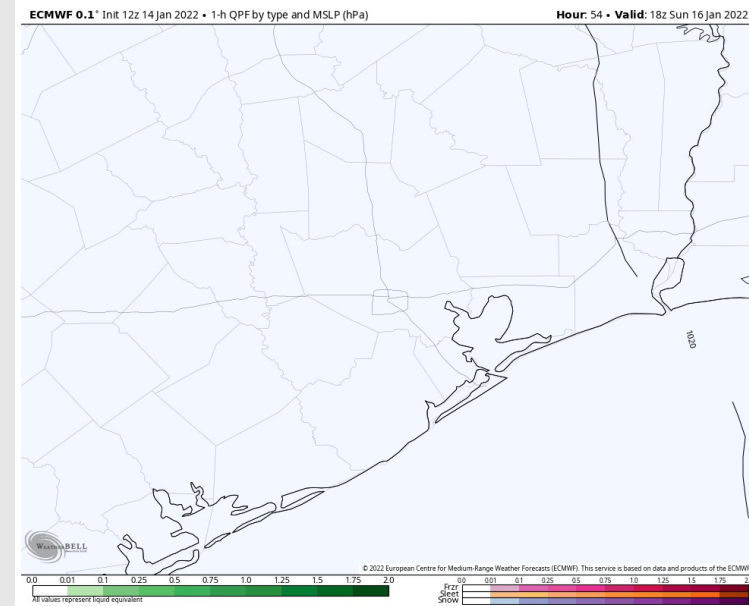
Visibility: 4
AM

Houston Pilots: *Sun. 1/17/2022*

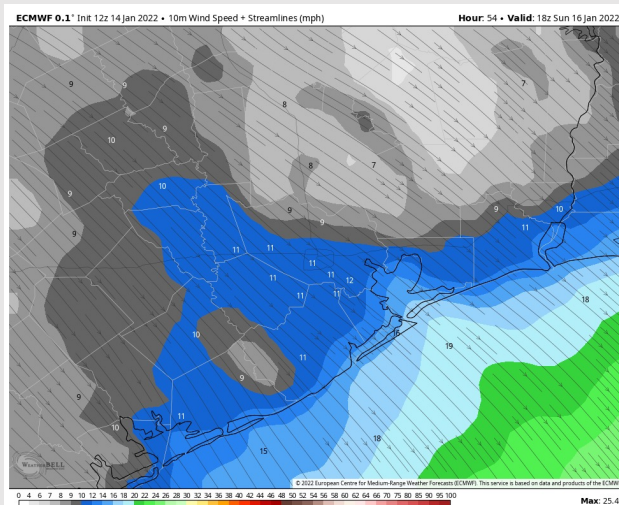
Forecast Discussion

Precip: Dry conditions continue Sunday.
Wind: NW winds will gradually weaken throughout the morning hours of Sunday. By 12 PM, winds will likely be closer to 10 – 20 MPH sustained with gusts of 25 MPH towards the boarding station. Winds are anticipated to continue the weakening trend through the remainder of the day while remaining from the NW.
Temps: Highs Sunday will sit in the low to mid 50s.
Visibility: No fog expected anticipated Sunday.

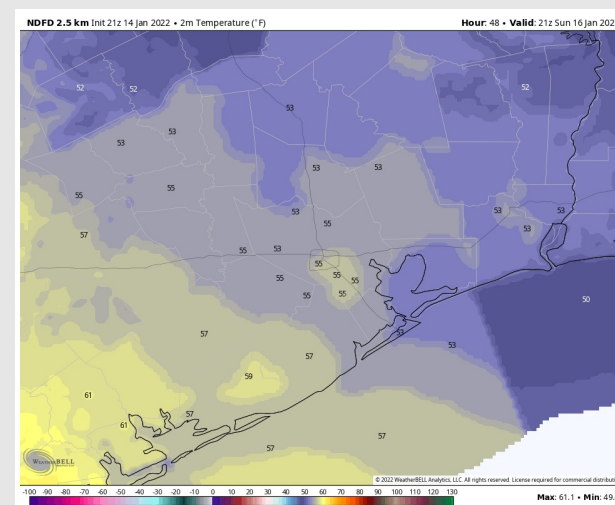
Precip Forecast: 12 PM CT



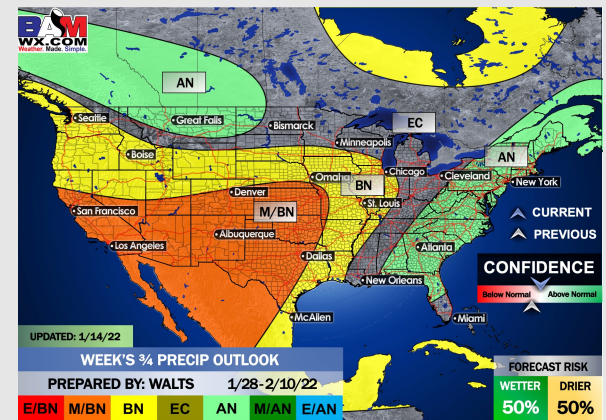
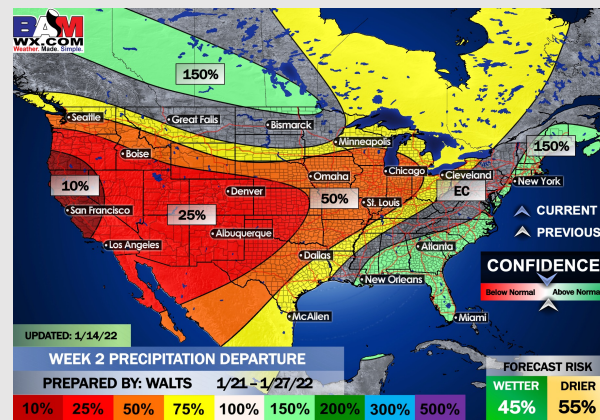
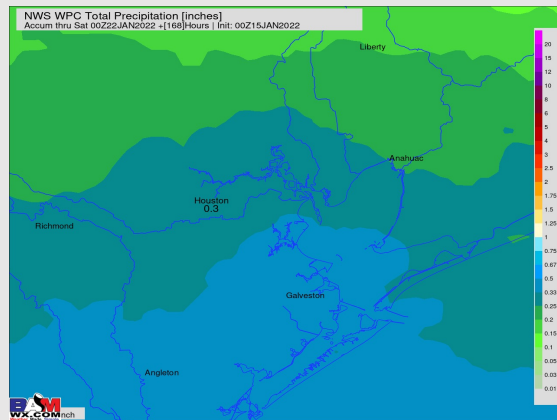
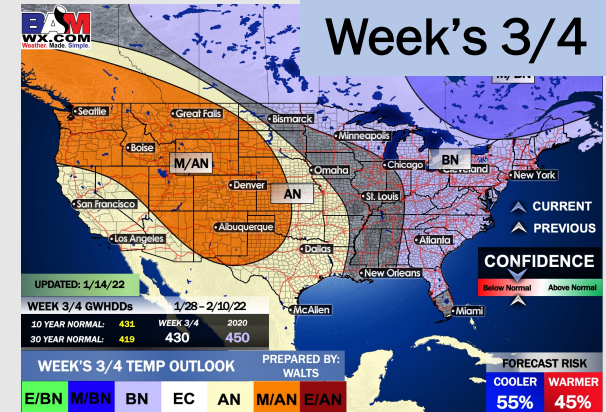
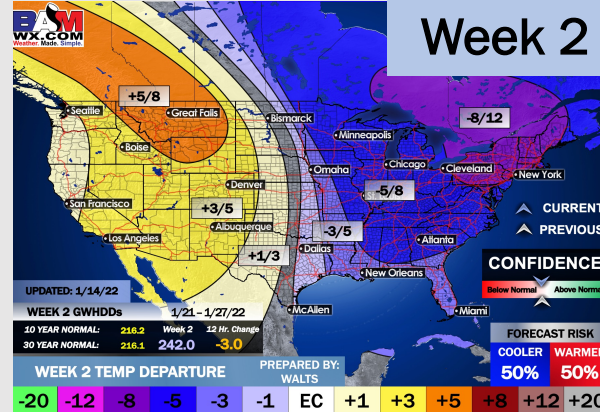
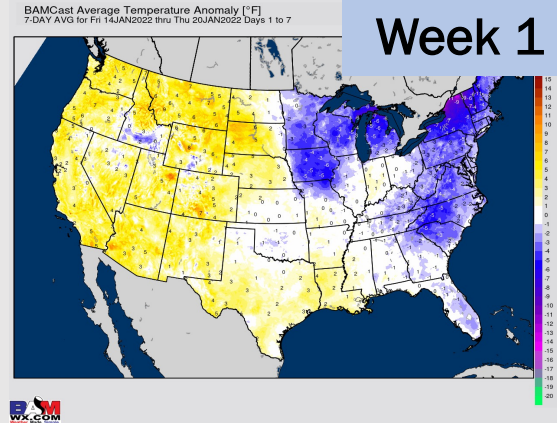
Wind Speed 12 PM CT



High Temps



Houston Pilots: 1/14/22



- After scattered showers tomorrow morning, anticipating dry conditions for the next several days.
- The week 2 timeframe is expected to have slightly below normal temperatures with below normal risks for precip.
- Right now, we are favoring above normal risks for temperatures and slightly below normal risks for precip for the weeks 3 and 4 timeframe.